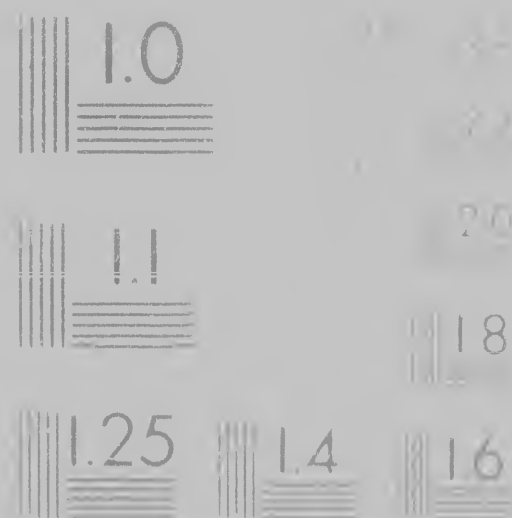


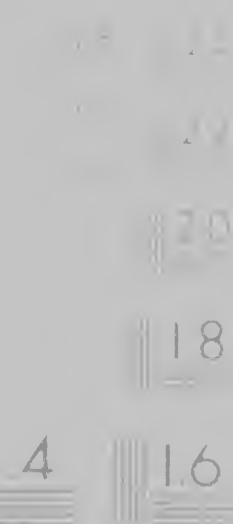
**IMAGE EVALUATION
TEST TARGET (MT-3)**



EVALUATION
NET (MT-3)

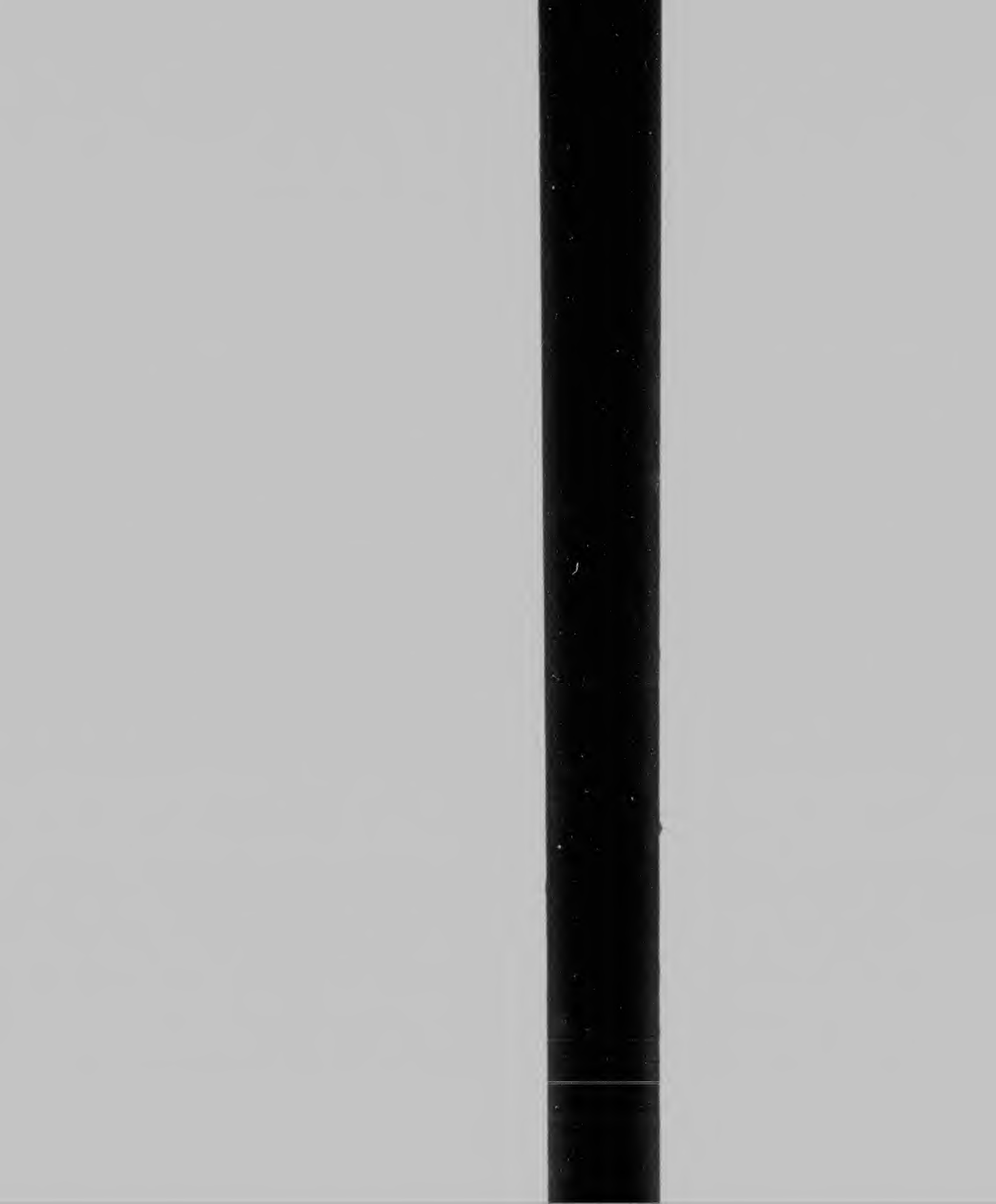


CIHMA
Microf
Series.



**CIHM/ICMH
Microfiche
Series.**

**CIHM/ICMH
Collection de
microfiches.**



Technical and Bibliographic Notes / Notes techniques et bibliographiques

The Institute has attempted to obtain the best original copy available for filming. Features of this copy which may be bibliographically unique which may alter any of the images in the reproduction, or which may significantly change the usual method of filming, are checked below

L'Institut a microfilmé le meilleur exemplaire qu'il lui a été possible d'obtenir. Les particularités de cet exemplaire, qui, du point de vue bibliographique, peuvent modifier une image reproduite, ou qui peuvent entraîner une modification dans la méthode habituelle de reproduction, sont indiquées ci-dessous

- Coloured covers/
Couverture de couleur
- Covers damaged/
Couverture endommagée
- Covers restored and/or laminated/
Couverture restaurée et/ou pelliculée
- Cover title missing/
Le titre de couverture manque
- Coloured maps/
Cartes géographiques en couleur
- Coloured ink (i.e. other than blue or black)
Encre de couleur (i.e. autre que bleue ou noire)
- Coloured plates and/or illustrations/
Planches et/ou illustrations en couleur
- Bound with other material/
Relié avec d'autres documents
- Tight binding may cause shadows or distortion

- Coloured pages
Pages de couleur
- Pages damaged
Pages endommagées
- Pages restored
Pages restaurées
- Pages discoloured
Pages décolorées
- Pages detached
Pages détachées
- Showthrough
Transparence
- Quality of reproduction
Qualité de l'impression
- Includes supplementary material
Comprend des documents supplémentaires
- Only edition

Techniques et bibliographiques

L'Institut a microfilmé le meilleur exemplaire qu'il lui a été possible de se procurer. Les détails de cet exemplaire qui sont peut-être uniques du point de vue bibliographique, qui peuvent modifier une image reproduite, ou qui peuvent exiger une modification dans la méthode normale de filmage, sont indiqués ci-dessous.

- Coloured pages
Pages de couleur
- Pages damaged
Pages endommagées
- Pages restored and/or laminated
Pages restaurées et/ou pelliculées
 Pages discoloured, stained or foxed
Pages décolorées, tachetées ou piquées- Pages detached
Pages détachées
- Showthrough
Transparence
- Quality of print varies
Qualité négative de l'impression
- Includes supplementary material
Comprend du matériel supplémentaire
- Only edition available

The copy filmed here has been reproduced to the generosity of.

Library of Congress
Photoduplication Service

The images appearing here are the best possible considering the condition of the original copy and in keeping with filming contract specifications.

Original copies in printed paper cover begin with the front cover and end with the last page with a printed or illustrated impression, or the back cover when applicable. Other original copies are filmed beginning with the first page with a printed or illustrated impression, and ending on the last page with a printed or illustrated impression.

Maps, plates, charts, etc., may be filmed at different reduction ratios. Those too large to be entirely included in one exposure are filmed beginning in the upper left hand corner, moving right and top to bottom, as many times as required. The following diagrams illustrate the method.

ere has been reproduced thanks
of.

rary of Congress
otoduplication Service

ring here are the best quality
ng the condition and legibility
oy and in keeping with the
pecifications.

printed paper covers are filmed
e front cover and ending on
n a printed or illustrated impres-
cover when appropriate. All
ies are filmed beginning on the
printed or illustrated impres-
on the last page with a printed
ression.

arts, etc., may be filmed at
n ratios. Those too large to be
in one exposure are filmed
upper left hand corner, left to
bottom, as many frames as
owing diagrams illustrate the

L'exemplaire filmé fut reproduit grâce à la
générosité de

Library of Congress
Photoduplication Service

Les images suivantes ont été reproduites avec le
plus grand soin, compte tenu de la condition et
de la netteté de l'exemplaire filmé, et en
conformité avec les conditions du contrat de
filmage

Les exemplaires originaux dont la couverture en
papier est imprimée sont filmés en commençant
par le premier plat et en terminant soit par la
dernière page qui comporte une empreinte
d'impression ou d'illustration, soit par le second
plat, selon le cas. Tous les autres exemplaires
originaux sont filmés en commençant par la
première page qui comporte une empreinte
d'impression ou d'illustration et en terminant par
la dernière page qui comporte une telle
empreinte

Les cartes, planches, tableaux, etc., peuvent être
filmés à des taux de réduction différents.
Lorsque le document est trop grand pour être
reproduit en un seul cliché, il est filmé à partir
de l'angle supérieur gauche, de gauche à droite
et de haut en bas, en prenant le nombre
d'images nécessaire. Les diagrammes suivants

le
et

en
ant

ond
s

par

être

e
tir
me

le

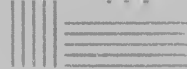
By J. L. LITTLE

A

NOVEL

THE first of the series
of the "Little" novels
was published in 1850, and
it was the first of a series of
novels which have since
been published in the
series. The first of the
series was published in
the year 1850, and it was
the first of a series of
novels which have since
been published in the
series. The first of the
series was published in
the year 1850, and it was
the first of a series of
novels which have since
been published in the
series.

That they shall be
the first of a series of
novels which have since
been published in the
series. That they shall be
the first of a series of
novels which have since
been published in the
series.



1.8



1.25



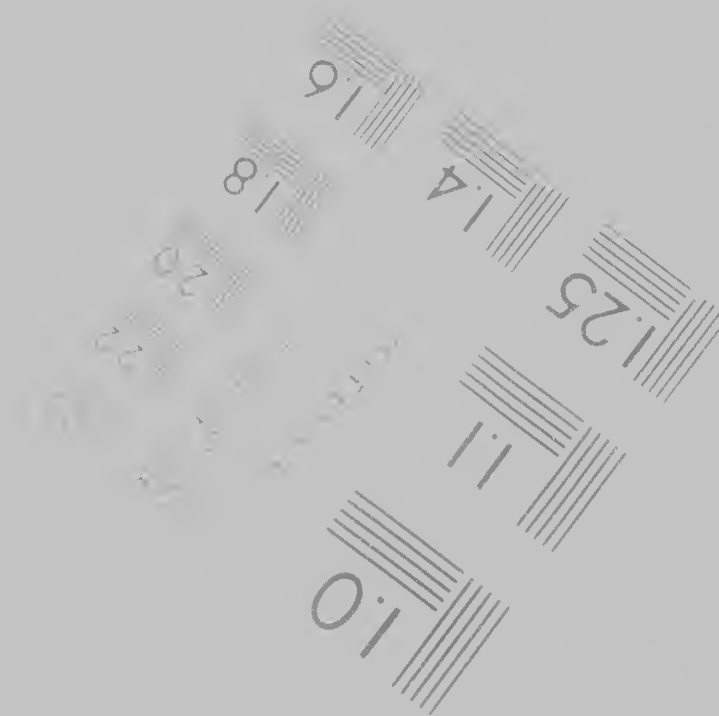
1.4



1.6



6



Photographic
Sciences
Corporation

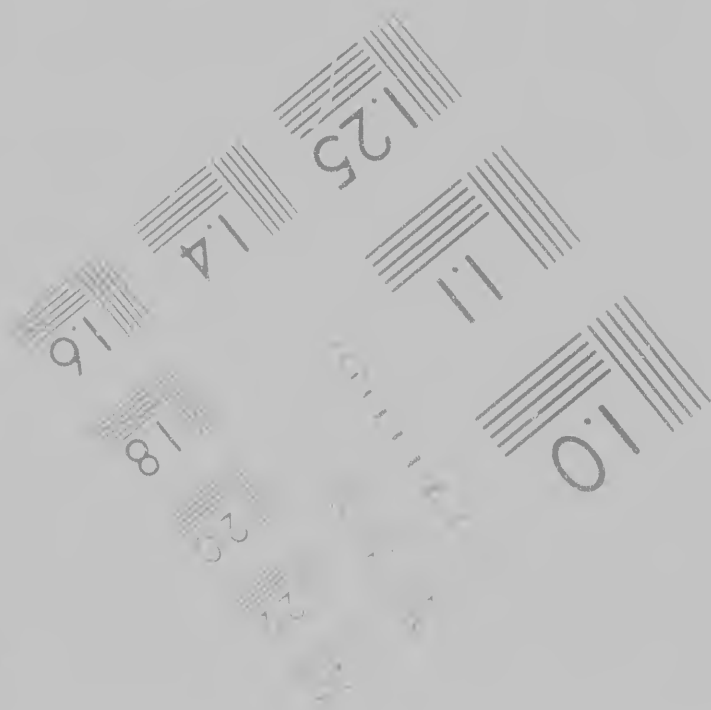
71 WEST MA
WEBSTER N
316 87

1.8

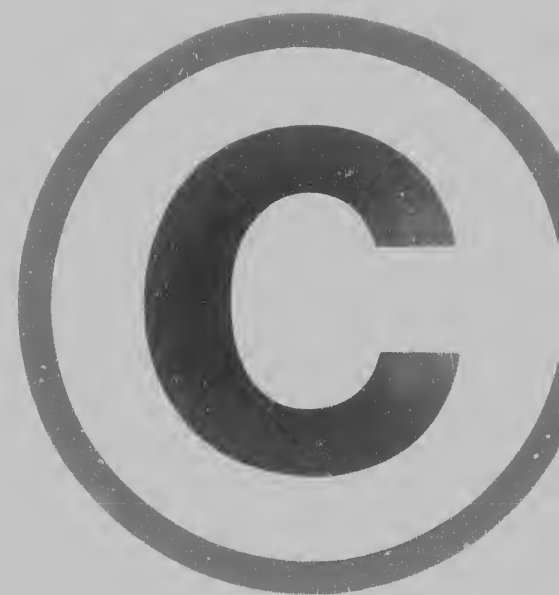
1.4 1.6

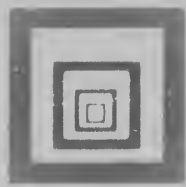


Canadian Institute for Historical Research



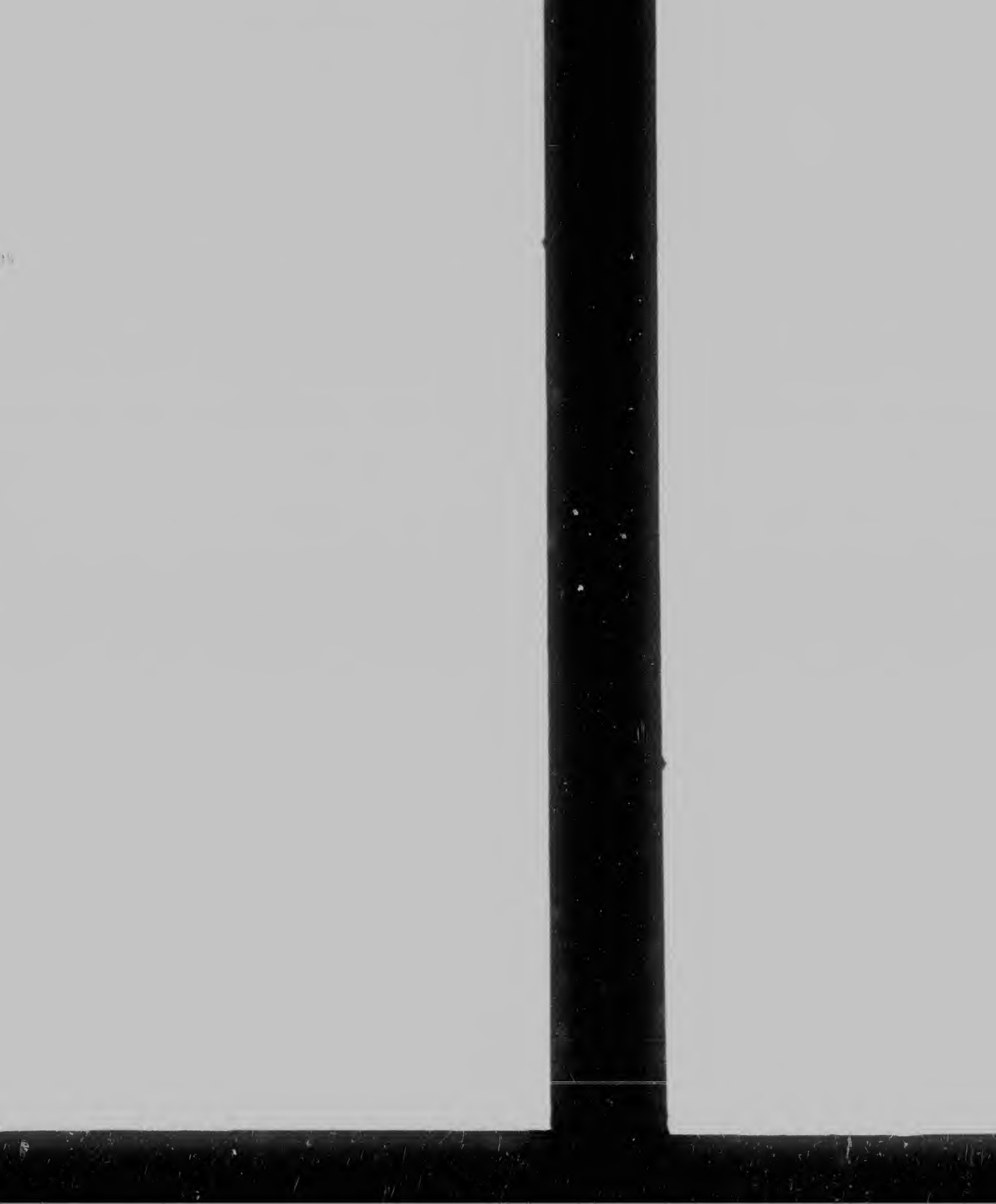
21 WEST MAIN STREET
WEBSTER N.Y. 14580
716 872 4500





Institute for Historical Microreproductions / Institut canadien de microreproductions historiques

© 1986



- Bound with other material?
- Relié avec d'autres documents

- Tight binding may cause shadows or distortion along interior margin?
- La reliure serrée peut causer de l'ombre ou de la distorsion le long de la marge intérieure

- Blank leaves added during restoration may appear within the text. Whenever possible, these have been omitted from filming.
- Il se peut que certaines pages blanches ajoutées lors d'une restauration apparaissent dans le texte, mais, lorsque cela était possible, ces pages n'ont pas été filmées.

- Includes supplementary material?
- Comprend

- Only edition shown?
- Seule édition

- Pages which were blank, faded, obscured, etc. have been omitted to ensure the best possible reproduction.
- Les pages qui ont été blanches, effacées, obscurcies, etc. ont été omises pour obtenir la meilleure reproduction possible.

Additional comments: CJHM no. 6036a
 Commentaires supplémentaires

10294111

This item is filmed at the reduction ratio checked below
 Ce document est filmé au taux de réduction indiqué ci-dessous

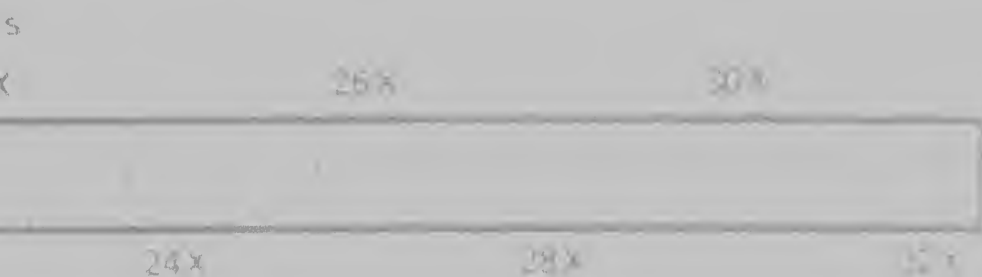
<input type="checkbox"/> 10x	<input type="checkbox"/> 14x	<input type="checkbox"/> 18x	<input type="checkbox"/> 22x
<input type="checkbox"/> 12x	<input type="checkbox"/> 16x	<input type="checkbox"/> 20x	<input type="checkbox"/> 24x

Includes supplementary material)
Comprend du matériel supplémentaire)

Only edition available)
Seule édition disponible)

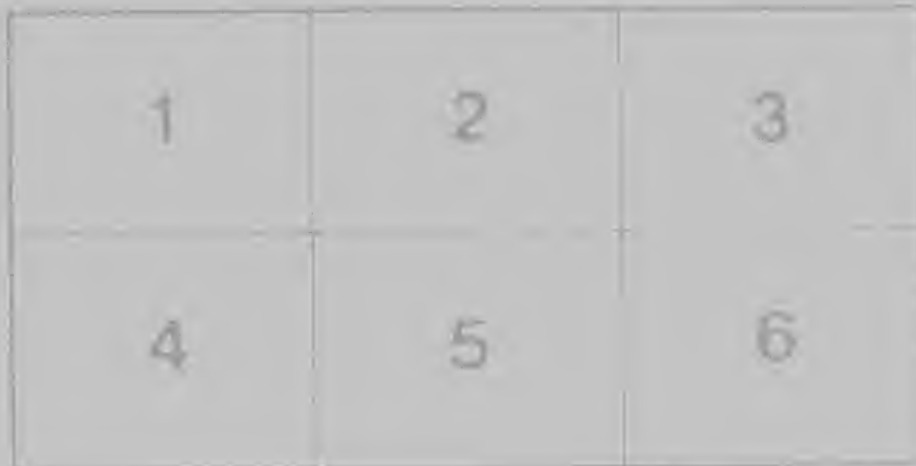
Pages wholly or partially obscured by errata
slips, tissues, etc. have been refilmed to
ensure the best possible image.
Les pages totalement ou partiellement
obscurcies par un feuillet d'errata, une pelure,
etc. ont été filmées à nouveau de façon à
obtenir la meilleure image possible.

different reduction ratios. Those
entirely included in one exposure
beginning in the upper left hand
right and top to bottom, as many
required. The following diagrams
method



ratios. Those too large to be
in one exposure are filmed
upper left hand corner, left to
bottom, as many frames as
following diagrams illustrate the

filmes à des taux de réduction différents.
Lorsque le document est trop grand pour être
reproduit en un seul cliché, il est filmé à partir
de l'angle supérieur gauche, de gauche à droite
et de haut en bas, en prenant le nombre
d'images nécessaire. Les diagrammes suivants
illustrent la méthode.



6
17
(12)
13





... that the ...
... the ...
... that the ...
... the ...
... that the ...
... the ...
... that the ...
... the ...
... that the ...
... the ...

... that the ...
... the ...
... that the ...
... the ...
... that the ...
... the ...
... that the ...
... the ...
... that the ...
... the ...

... that the ...
... the ...
... that the ...
... the ...
... that the ...
... the ...
... that the ...
... the ...
... that the ...
... the ...

... shall have the same force and effect as if they were made in the same manner, in which they were made, and to all the same rights and advantages of the United States as if they were made in the same manner.

They shall not interfere with the primary disposal of the land by the United States, nor with the ordinances and regulations which Congress may make concerning the title by such land to the bona fide purchasers.

They shall be subject to pay a part of the federal debt, contracted or to be contracted on them by Congress, according to the same common rule and regulation which shall be made on the other States.

They shall be subject to land the property of the United States.

Their respective governments shall be republican.

Their taxes on imports shall in no case be taxed higher than those on the same articles in the original States.

They shall have the same force and effect as if they were made in the same manner, in which they were made, and to all the same rights and advantages of the United States as if they were made in the same manner.

They shall have the same force and effect as if they were made in the same manner, in which they were made, and to all the same rights and advantages of the United States as if they were made in the same manner.

They shall have the same force and effect as if they were made in the same manner, in which they were made, and to all the same rights and advantages of the United States as if they were made in the same manner.

They shall have the same force and effect as if they were made in the same manner, in which they were made, and to all the same rights and advantages of the United States as if they were made in the same manner.

They shall have the same force and effect as if they were made in the same manner, in which they were made, and to all the same rights and advantages of the United States as if they were made in the same manner.

They shall have the same force and effect as if they were made in the same manner, in which they were made, and to all the same rights and advantages of the United States as if they were made in the same manner.

They shall have the same force and effect as if they were made in the same manner, in which they were made, and to all the same rights and advantages of the United States as if they were made in the same manner.

They shall have the same force and effect as if they were made in the same manner, in which they were made, and to all the same rights and advantages of the United States as if they were made in the same manner.

They shall have the same force and effect as if they were made in the same manner, in which they were made, and to all the same rights and advantages of the United States as if they were made in the same manner.

They shall have the same force and effect as if they were made in the same manner, in which they were made, and to all the same rights and advantages of the United States as if they were made in the same manner.

They shall have the same force and effect as if they were made in the same manner, in which they were made, and to all the same rights and advantages of the United States as if they were made in the same manner.

They shall have the same force and effect as if they were made in the same manner, in which they were made, and to all the same rights and advantages of the United States as if they were made in the same manner.