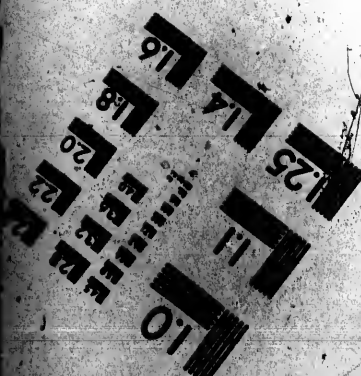
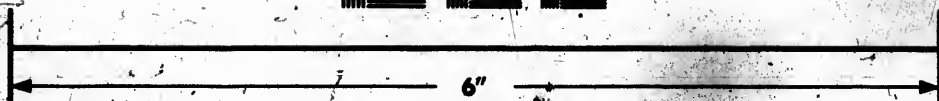
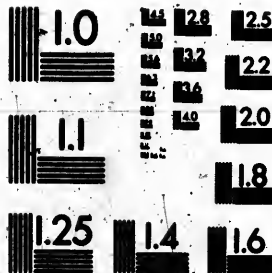


**IMAGE EVALUATION
TEST TARGET (MT-3)**



**Photographic
Sciences
Corporation**

20 WEST MAIN STREET
WEBSTER, N.Y. 14580
(716) 873-4503

123
122
120
118

**CIHM
Microfiche
Series
(Monographs)**

**ICMH
Collection de
microfiches
(monographies)**



Canadian Institute for Historical Microreproductions / Institut canadien de microreproductions historiques

11
10

© 1991

Technical and Bibliographic Notes / Notes techniques et bibliographiques

The Institute has attempted to obtain the best original copy available for filming. Features of this copy which may be bibliographically unique, which may alter any of the images in the reproduction, or which may significantly change the usual method of filming, are checked below.

L'Institut a microfilmé le meilleur exemplaire qu'il lui a été possible de se procurer. Les détails de cet exemplaire qui sont peut-être uniques du point de vue bibliographique, qui peuvent modifier une image reproduite, ou qui peuvent exiger une modification dans la méthode normale de filmage sont indiqués ci-dessous.

- Coloured covers/
Couverture de couleur
- Covers damaged/
Couverture endommagée
- Covers restored and/or laminated/
Couverture restaurée et/ou pelliculée
- Cover title missing/
Le titre de couverture manque
- Coloured maps/
Cartes géographiques en couleur
- Coloured ink (i.e. other than blue or black)/
Encre de couleur (i.e. autre que bleue ou noire)
- Coloured plates and/or illustrations/
Planches et/ou illustrations en couleur
- Bound with other material/
Relié avec d'autres documents
- Tight binding may cause shadows or distortion along interior margin/
La reliure serrée peut causer de l'ombre ou de la distorsion le long de la marge intérieure
- Blank leaves added during restoration may appear within the text. Whenever possible, these have been omitted from filming/
Il se peut que certaines pages blanches ajoutées lors d'une restauration apparaissent dans le texte, mais, lorsque cela était possible, ces pages n'ont pas été filmées.

- Coloured pages/
Pages de couleur
- Pages damaged/
Pages endommagées
- Pages restored and/or laminated/
Pages restaurées et/ou pelliculées
- Pages discoloured, stained or foxed/
Pages décolorées, tachetées ou piquées
- Pages detached/
Pages détachées
- Showthrough/
Transparence
- Quality of print varies/
Qualité inégale de l'impression
- Continuous pagination/
Pagination continue
- Includes index(es)/
Comprend un (des) index
- Title on header taken from:
Le titre de l'en-tête provient:
- Title page of issue/
Page de titre de la livraison
- Caption of issue/
Titre de départ de la livraison
- Masthead/
Générique (périodiques) de la livraison

- Additional comments:
Commentaires supplémentaires:

This item is filmed at the reduction ratio checked below.
Ce document est filmé au taux de réduction indiqué ci-dessous.

10X	14X	18X	22X	26X	30X
<input type="checkbox"/>	<input type="checkbox"/>	<input type="checkbox"/>	<input type="checkbox"/>	<input type="checkbox"/>	<input checked="" type="checkbox"/>
12X	16X	20X	24X	28X	32X

The copy filmed here has been reproduced thanks to the generosity of:

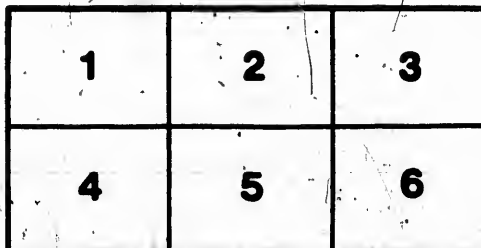
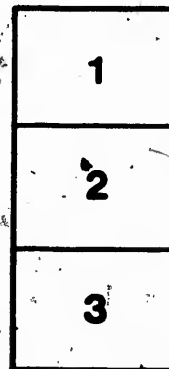
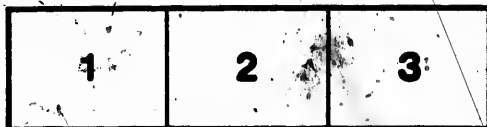
Library of the National Archives of Canada

The images appearing here are the best quality possible considering the condition and legibility of the original copy and in keeping with the filming contract specifications.

Original copies in printed paper covers are filmed beginning with the front cover and ending on the last page with a printed or illustrated impression, or the back cover when appropriate. All other original copies are filmed beginning on the first page with a printed or illustrated impression, and ending on the last page with a printed or illustrated impression.

The last recorded frame on each microfiche shall contain the symbol \rightarrow (meaning "CONTINUED"), or the symbol ∇ (meaning "END"), whichever applies.

Maps, plates, charts, etc., may be filmed at different reduction ratios. Those too large to be entirely included in one exposure are filmed beginning in the upper left hand corner, left to right and top to bottom, as many frames as required. The following diagrams illustrate the method:



L'exemplaire filmé fut reproduit grâce à la générosité de:

La bibliothèque des Archives nationales du Canada

Les images suivantes ont été reproduites avec le plus grand soin, compte tenu de la condition et de la netteté de l'exemplaire filmé, et en conformité avec les conditions du contrat de filmage.

Les exemplaires originaux dont la couverture en papier est imprimée sont filmés en commençant par le premier plat et en terminant soit par la dernière page qui comporte une empreinte d'impression ou d'illustration, soit par le second plat, selon le cas. Tous les autres exemplaires originaux sont filmés en commençant par la première page qui comporte une empreinte d'impression ou d'illustration et en terminant par la dernière page qui comporte une telle empreinte.

Un des symboles suivants apparaîtra sur la dernière image de chaque microfiche, selon le cas: le symbole \rightarrow signifie "A SUIVRE", le symbole ∇ signifie "FIN".

Les cartes, planches, tableaux, etc., peuvent être filmés à des taux de réduction différents. Lorsque le document est trop grand pour être reproduit en un seul cliché, il est filmé à partir de l'angle supérieur gauche, de gauche à droite, et de haut en bas, en prenant le nombre d'images nécessaire. Les diagrammes suivants illustrent la méthode.

WILLIAM SCLATER & CO., Limited,

MINERS AND MANUFACTURERS OF ASBESTOS MATERIAL,

AND DEALERS IN

Steamboat, Engineers' and Manufacturers' Supplies,

42, 44 & 46 FOUNDLING STREET, MONTREAL,

CORNER OF ST. PETER STREET, NEAR ST. ANN'S MARKET.

SOLE AGENTS IN THE DOMINION FOR

ASBESTOS PACKING Co., Boston,
A. B. FLEMING & Co., Oils, Edinburgh, Scotland,
JEFFERY ASBESTOS MINES, Danville, P.O.,
HOUSEHOLD FIRE EXTINGUISHERS,
WOLFSTOWN SOAPSTONE QUARRY,
MONTREAL FILE WORKS,
MEGANTIC ASBESTOS Co., Coleraine,
WOLFSTOWN ASBESTOS Co.,
CANADA EXPLOSIVE Co., Limited,
of Halifax.

MANUFACTURERS OF THE
PATENT SAFETY
EXPLOSIVE,

ROBURITE

KINDLY ADDRESS ALL
CORRESPONDENCE
POST OFFICE BOX 1549
MONTREAL



ASBESTOS MANUFACTURERS



FIRE DEPARTMENT
SUPPLIES :

STEAM FIRE ENGINES,
HAND FIRE ENGINES,
FIRE HOSE COUPLINGS,
BRANCH PIPES,
FIRE EXTINGUISHERS,
STEAM TUBE CLEANERS,
TUBE BRUSHES, BOILER COMPOUND,
LUBRICATING GRAPHITE.

**WHITE & COLORED
COTTON WASTE.**

Cotton Waste, Oils (Cylinder and Lubricating), Lubricating Greases,
Shafting Oilers, Belt Dressing,
HAIR FELT,
Flags, Tents, Fenders and Tarpaulins.

TARPAULINS TO RENT.

WILLIAM SCLATER & CO'S ASBESTOS WAREHOUSE,

42, 44 & 46 Foundling Street,

Corner St. Peter St., near St. Ann's Market,

••••• MONTREAL.

ASBESTOS PISTON PACKING

Indestructible, Self-Lubricating, for Piston Rods, Valve Stems, Throttle Valves, Stuffing Boxes of High and Low Pressure and Rotary Engines, and wherever Superheated Steam or Acids are used.

From the extraordinary properties of Asbestos, its imperishability or indestructibility by any degree of heat (either wet or dry) or any acid, and its inherent lubricating qualities, this substance above all others seems peculiarly suited for use as a steam packing, and renders it adaptable to all the uses for which, heretofore, many different and special kinds of packing have been used.

In all sizes of rope, from $\frac{1}{4}$ inch to 3 inches diameter. (Thoroughly oil before using.) per lb.

Made from pure Asbestos, finest quality and strongest fibre, for use in Locomotive Domes, Steam-chest Covers, Manholes, Hand Holes, Cylinder Heads, Pipe Joints, Flange Joints, Acid Joints, &c.

We claim for this Packing:

- 1st. It is 40 per cent. lighter than Rubber.
- 2nd. It does not require to be used as thick as Rubber.
- 3rd. As the steam or water causes it to expand, it does not require to be screwed on so tight as Rubber.
- 4th. It can be used over and over again without injury.
- 5th. It will adapt itself to uneven surfaces.
- 6th. It makes a perfect and permanent joint, and will not oxidize the Iron.

We have it in rolls and sheets 40 x 44 inches, from $\frac{1}{32}$ to $\frac{1}{4}$ thick.
Give cost of Blacklead or Plumbago before application. Use chisel or sharp instrument to cut it.

ASBESTOS LAMP WICK PACKING

For use in packing valve stems, air brakes, &c.

This packing consists of long, fine fibres of Asbestos, twisted so as to form a wicking, and for packing valves, &c., where hitherto cotton or hemp wick has been used, it has no superior.

For packing the numerous valves, in hotels or buildings heated by steam, or the pumps on locomotive engines, we guarantee its efficiency, as it will not burn, and will outwear any packing now used.

ASBESTOS ROPE PACKING

For use in packing small valve stems, pumps, and other special uses.

It consists of fine fibres of pure Asbestos, prepared in such a manner that it can be twisted into any desired shape, and on account of its fire and acid proof qualities, is far superior to any of the cotton or hemp packings commonly used.

Put up in packages of one pound and upwards.

INSTRUCTIONS

FOR USE

ASBESTOS PACKING

For Pistons, Valve Stems, Throttle Valves, Stuffing Boxes of high and low pressure, and Rotary Engines. Superheated Steam or Acids do not injure Asbestos Packing.

- 1st. From $\frac{1}{4}$ " to 2" dia. Cut with sharp knife or chisel in proper lengths for rings, a little larger than the piston rod, and pack so as to break joints; fill the stuffing box full as possible, and screw up very tightly at first.
- 2nd. After running a day or two, screw up and add another ring if practical.
- 3rd. Oil or grease the Packing thoroughly before using. (Mineral oils are the most suited, but not absolutely necessary.)
- 4th. The Packing should be $\frac{1}{4}$ " larger than space in stuffing box.
- 5th. Oil of any kind will not injure the Packing.

ASBESTOS SHEET PACKING FOR STEAM JOINTS.

FROM $\frac{1}{2}$ " TO 1" THICK.

It is 40% lighter than rubber, will cost less, make a better and more lasting joint—in fact, Asbestos is the best jointing material in the world.

Give a coat of Blacklead, and it can be taken off and on as often as you like without injury.

PLASTIC ASBESTOS CEMENT PIPE AND BOILER COVERING.

For covering Hot Air and Steam Pipes, Boilers, Stills, &c.

This material is composed of Asbestos fibre and a cementing compound, which forms a light porous covering, partaking of the nature of a felt and a cement. It is put up dry in barrels, to be mixed with water to the consistency of mortar, or will be supplied ready for use if desired. It is applied with a trowel, and forms the most economical and effective non-conductor in use. One barrel will cover a service of about 40 square feet, one inch thick, flat measurement. It can easily be applied by any one.

"EXTRA CEMENT FELTING," for Hot Blast Pipes and Furnaces, also especially valuable for "filling" or "deadening" floors of factories, storehouses, &c. It is perfectly fire-proof.

ASBESTOS LUBRICATING COMPOUND.

To be used with or without our Compression Cups, for Engines, or Copper Pin Cups for Shafting.

There are to-day seventy-five Steamers running on the Upper and Lower St. Lawrence lubricated entirely with this Compound, at a saving of 75 per cent. to owners over the use of Oil.

Now—It is not the Oil you use, but the Oil you lose, that costs the money. Our principle is lubricating with solid instead of liquid. This is a superior lubricant which cannot be surpassed. It has been thoroughly tested. It will effect an enormous saving over oil; does away with friction. The coldest weather has no effect on it. No dropping from shafting, doing away with risk of spontaneous combustion, is a great saving in waste. It has been used with the utmost success by Paper, Pulp, Saw, Cotton, Rolling and Woolen Mills, Sugar Refineries, Gas Works, and for all Machinery with Heavy Bearings. We claim for this Lubricator, Economy, Durability and perfect Lubrication without friction, gumming or running.

INSTRUCTIONS

FOR USING

WILLIAM SCLATER & COMPANY'S

ASBESTOS

CEMENT & FELTING.

THE ONLY PERFECT FIRE-PROOF COVERING FOR STEAM PIPES, BOILERS, &c., KNOWN.

1st. Work up the material to the consistency of ordinary mortar, with water, in the usual way.

2nd. For covering Pipes, cut strips of coarse cotton or canvas seven or eight inches wide, long enough to fasten around the pipe to be covered; spread the cement (prepared as above) on the strips, about one-half inch in thickness, then apply to pipe as you would a putty. When dry remove the cotton, and the cement will stick to the pipe. Subsequent coats should be applied with a trowel, same as ordinary mortar. Care to be taken that each coat is dry before the next is applied. Score each coat but the last, and you will find that the next coat will adhere better.

3rd. For Boilers, make a thin wash of the material, and apply to the surface of the Boiler as you would whitewash; this will improve the cement adhering to the iron. Apply with a trowel, and see that each coat is dry and scored before applying the next. The surface of the pipes or boilers when covered should be as smooth as a finished plastered wall.

Width in inches.	Per foot.
1	14
1 1/2	14
2	14
2 1/2	14
3	14
3 1/2	14
4	14
4 1/2	14
5	14
6	14
7	14

Double Ribbed

Cur 1 5-16 inch \$2.50

tory can

FUNDAMENTAL REQUIREMENTS OF COVERINGS.

- 1st.—It must be Fire-Proof. No Organic Matter.
- 2nd.—It must be as nearly a perfect non-conductor of heat as it is possible to obtain.
- 3rd.—It must be entirely free from ingredients injurious to iron.
- 4th.—It must be of such material that it will not settle to the bottom of its enveloping wrapper and must not crumble or crack after having been exposed for a long time to the highest temperature and to the jarring of the pipes and to their expansion and contraction, but must keep its original shape.
- 5th.—It must be easily applied and as easily removed and re-applied.
- 6th.—It must be light in weight and contain innumerable minute air-cells. If the air spaces are of appreciable size, the air shut up within in form of little cells as a non-conductor of heat, owing to convection and circulation within the spaces. A covering using these visible air spaces, if it feel fairly cool to the touch, simply shows that a current of air within is carrying the heat to some other point where it may escape.
- 7th.—The adhesive or glutinous properties of a Covering should be composed of materials NOT affected and destroyed by long exposure to heat and also not injurious to the porous properties of the Covering.

Our Coverings fully meet these Fundamental Requirements and are the Only Coverings which Combine them all.

OUR :—
PLASTIC
CEMENT COVERING
 ARE APPLIED BY
CONTRACT
 OR SUPPLIED BY THE
+ BARREL +
 IN
WET OR DRY FORM.

FOR WROUGHT IRON PIPE.				FOR FITTINGS.						
Inside Diameter of Pipe.	Weight of Covering per Lineal Foot.	Price per Lineal Foot Canvas Jacketed.	Flange and 45° elbows.	Tees.	Half Valves.	Crosses.	Flange and Multicoll. Tees.			
1-2 in.	0	21	20	21	25	30	35	30	31	31
1-4 "	0	22	25	25	31	35	41	31	31	31
1-6 "	12	24	25	31	35	41	47	31	31	31
1-8 "	15	25	25	31	35	41	47	31	31	31
1-10 "	18	27	27	31	37	41	47	31	31	31
1-12 "	24	31	31	31	41	47	53	31	31	31
1-14 "	24	31	31	31	41	47	53	31	31	31
1-16 "	24	31	31	31	41	47	53	31	31	31
1-18 "	24	31	31	31	41	47	53	31	31	31
1-20 "	24	31	31	31	41	47	53	31	31	31
1-22 "	24	31	31	31	41	47	53	31	31	31
1-24 "	24	31	31	31	41	47	53	31	31	31
1-26 "	24	31	31	31	41	47	53	31	31	31
1-28 "	24	31	31	31	41	47	53	31	31	31
1-30 "	24	31	31	31	41	47	53	31	31	31
1-32 "	24	31	31	31	41	47	53	31	31	31
1-34 "	24	31	31	31	41	47	53	31	31	31
1-36 "	24	31	31	31	41	47	53	31	31	31
1-38 "	24	31	31	31	41	47	53	31	31	31
1-40 "	24	31	31	31	41	47	53	31	31	31
1-42 "	24	31	31	31	41	47	53	31	31	31
1-44 "	24	31	31	31	41	47	53	31	31	31
1-46 "	24	31	31	31	41	47	53	31	31	31
1-48 "	24	31	31	31	41	47	53	31	31	31
1-50 "	24	31	31	31	41	47	53	31	31	31
1-52 "	24	31	31	31	41	47	53	31	31	31
1-54 "	24	31	31	31	41	47	53	31	31	31
1-56 "	24	31	31	31	41	47	53	31	31	31
1-58 "	24	31	31	31	41	47	53	31	31	31
1-60 "	24	31	31	31	41	47	53	31	31	31

The sections are 36 inches in length. A sufficient number of leadings furnished without additional charge. Sold in full reels only.

By use of these fittings much time may be saved in the application of the covering, and a much better finish to the work attained. In case of a valve fitting, the stem can be removed and packed without removing the covering.

SCLATER'S RED STITCHED COTTON BELTING.

FOR MAIN DRIVING, COTTON MILLS, PAPER MILLS, PULP MILLS, SAW MILLS, MACHINE SHOPS, MINES, &c.

IN LADING THIS BELT USE AN AWL INSTEAD OF A PUNON.

	1 1/2	1 3/4	2	2 1/4	2 1/2	2 3/4	3	3 1/4	4	5	6	7	8	9	10	11	12	Inches.	
4-Ply	13 1/2	15 1/2	18	20 1/2	22 1/2	24 1/2	27	31 1/2	36	45	54	63	72	81	90	99	1.08	per Ft.	
6-Ply	3	3 1/4	4	4 1/4	5	5 1/4	6	7	8	9	10	12	13	14	15	16	17	18	Inches.
8-Ply	3	3 1/4	4	4 1/4	5	5 1/4	6	7	8	9	10	12	13	14	15	16	17	18	Inches.
10-Ply	3	3 1/4	4	4 1/4	5	5 1/4	6	7	8	9	10	12	13	14	15	16	17	18	Inches.
	80.00	1.05	1.20	1.35	1.50	1.65	1.80	2.10	2.25	2.40	2.55	2.70	3.00	3.00	4.50	5.40	6.00	per Ft.	
	12	14	15	16	18	20	22	24	26	28	30	36	40	44	48	54	60	Inches.	
	\$2.40	2.80	3.00	3.20	3.40	4.00	4.40	4.80	5.20	5.60	6.00	7.20	8.00	8.80	9.60	10.80	12.00	per Ft.	

COTTON-FIRE HOSE Canvas Hose, plain and Rubber Lined.

PRICE LIST.

LEATHER BELTING

Width in inches.	Price per foot.	Width in inches.	Price per foot.	Width in inches.	Price per foot.
1	07	8	75	22	2.45
1 1/2	10	9	85	23	2.60
1 3/4	12	10	95	24	2.75
2	14	11	1.07	25	2.88
2 1/4	16	12	1.20	26	3.10
2 1/2	18	13	1.32	27	3.13
2 3/4	20	14	1.44	28	3.25
3	25	15	1.50	30	3.50
3 1/2	30	16	1.70	32	3.88
4	35	17	1.82	34	4.25
4 1/2	40	18	1.85	40	5.00
5	45	19	2.07	42	5.50
6	55	20	2.20	44	6.00
7	65	21	2.32	48	6.75

Double Belts Twice the Price of Single.
Ribbed Belts same as additional width.

LACE LEATHER.

In side.....per ft.

CUT LACE, per 1000 ft.—1 in., \$1.25;
 5-16 inch, \$1.50; 3/4 inch, \$1.75; 1/2 inch,
 \$2.50.

All BELTS not entirely satisfactory can be returned at our expense.

HUNT & CONNELL'S

Glass Tube Cutter.

Patented Jan. 20th, 1886, and May 24th, 1887.

FOR CUTTING GAUGE GLASSES TO LENGTH.

One arm has a scale in inches and fractions of an inch, a slide stop with set screw and a rotary cutter at the end. This arm is inserted in the end of the glass tube to the required distance, against the slide stop or gauge, the outside of the glass tube resting in the circled end of the other arm. With a slight pressure of one hand on the handles, and a rotation of the glass with the other hand, the rotary cutter makes an even cut around the inside of the tube, and a very little pressure breaks it off.

Two sizes are made, Nos. 1 and 2.
 No. 1 has a scale up to 5 inches.
 No. 2 up to 7 inches.
 Price, \$2.50 each.
 Price, \$3.00 each.

FOR SALE BY
WM. SCLATER & CO., Limited.
 42, 44, 46 FOUNDLING STREET,
 MONTREAL.

Recutting List.

GET YOUR FILES "RECUT" AND SAVE 40 P. C.
 GUARANTEED TO GIVE SATISFACTION.

ROUND.				HAND, HALF ROUND, FLAT AND SQUARE.			
In.	Per doz. REB.	Per doz. REB CUT.	Per doz. REB.	In.	Per doz. REB.	Per doz. REB CUT.	Per doz. REB.
0	56	61	70	6	68	78	92
7	68	78	92	7	84	98	108
8	84	98	108	8	96	108	124
9	96	108	124	9	120	130	152
10	120	130	152	10	144	150	184
11	144	150	184	11	172	182	212
12	172	182	212	12	200	210	240
13	200	210	240	13	240	245	288
14	240	245	288	14	288	292	336
15	288	292	336	15	344	348	416
16	344	348	416	16	400	405	504
17	400	405	504	17	480	520	592
18	480	520	592	18	544	600	672

HORSE RANGES.		TAVER SAW FILES.	
In.	Per doz.	In.	Per doz.
12	\$2.30	3 & 3/4	\$.32
13	2.88	4	.30
14	3.44	4 1/2	.40
15	4.00	5	.44
16	4.80	6	.60
		7	.70
		8	.80
		9	1.24
		10	1.50

