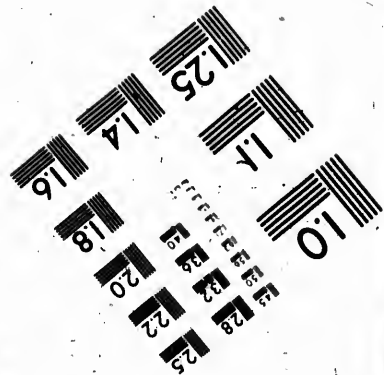
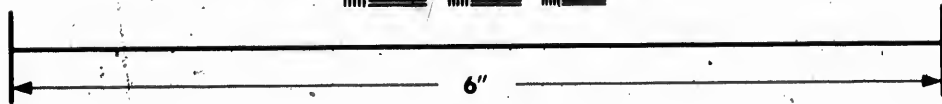
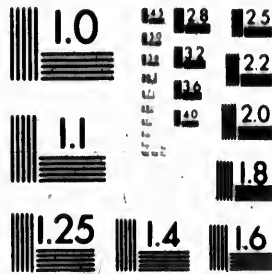


**IMAGE EVALUATION  
TEST TARGET (MT-3)**



**Photographic  
Sciences  
Corporation**

23 WEST MAIN STREET  
WEBSTER, N.Y. 14580  
(716) 872-4503

Canadi

**CIHM  
Microfiche  
Series  
(Monographs)**

**ICMH  
Collection de  
microfiches  
(monographies)**



Canadian Institute for Historical Microreproductions / Institut canadien de microreproductions historiques

**© 1993**

Technical and Bibliographic Notes / Notes techniques et bibliographiques

The Institute has attempted to obtain the best original copy available for filming. Features of this copy which may be bibliographically unique, which may alter any of the images in the reproduction, or which may significantly change the usual method of filming, are checked below.

L'institut a microfilmé le meilleur exemplaire qu'il lui a été possible de se procurer. Les détails de cet exemplaire qui sont peut-être uniques du point de vue bibliographique, qui peuvent modifier une image reproduite, ou qui peuvent exiger une modification dans la méthode normale de filmage sont indiqués ci-dessous.

- Coloured covers/  
Couverture de couleur
- Covers damaged/  
Couverture endommagée
- Covers restored and/or laminated/  
Couverture restaurée et/ou pelliculée
- Cover title missing/  
Le titre de couverture manque
- Coloured maps/  
Cartes géographiques en couleur
- Coloured ink (i.e. other than blue or black)/  
Encre de couleur (i.e. autre que bleue ou noire)
- Coloured plates and/or illustrations/  
Planches et/ou illustrations en couleur
- Bound with other material/  
Relié avec d'autres documents
- Tight binding may cause shadows or distortion  
along interior margin/  
La reliure serrée peut causer de l'ombre ou de la  
distorsion le long de la marge intérieure
- Blank leaves added during restoration may appear  
within the text. Whenever possible, these have  
been omitted from filming/  
Il se peut que certaines pages blanches ajoutées  
lors d'une restauration apparaissent dans le texte,  
mais, lorsque cela était possible, ces pages n'ont  
pas été filmées.

- Coloured pages/  
Pages de couleur
- Pages damaged/  
Pages endommagées
- Pages restored and/or laminated/  
Pages restaurées et/ou pelliculées
- Pages discoloured, stained or foxed/  
Pages décolorées, tachetées ou piquées
- Pages detached/  
Pages détachées
- Showthrough/  
Transparence
- Quality of print varies/  
Qualité inégale de l'impression
- Continuous pagination/  
Pagination continue
- Includes index(es)/  
Comprend un (des) index

Title on header taken from:  
Le titre de l'en-tête provient:

- Title page of issue/  
Page de titre de la livraison
- Caption of issue/  
Titre de départ de la livraison
- Masthead/  
Générique (périodiques) de la livraison

- Additional comments:  
Commentaires supplémentaires:

This item is filmed at the reduction ratio checked below/  
Ce document est filmé au taux de réduction indiqué ci-dessous.

10X	12X	14X	16X	18X	20X	22X	24X	26X	28X	30X	32X
						✓					

The copy filmed here has been reproduced thanks to the generosity of:

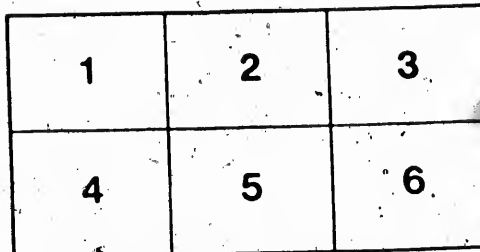
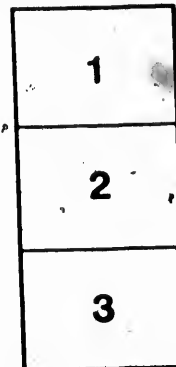
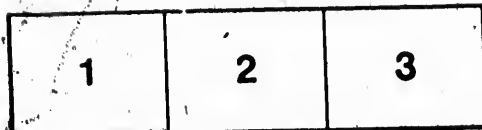
Thomas Fisher Rare Book Library,  
University of Toronto Library

The images appearing here are the best quality possible considering the condition and legibility of the original copy and in keeping with the filming contract specifications.

Original copies in printed paper covers are filmed beginning with the front cover and ending on the last page with a printed or illustrated impression, or the back cover when appropriate. All other original copies are filmed beginning on the first page with a printed or illustrated impression, and ending on the last page with a printed or illustrated impression.

The last recorded frame on each microfiche shall contain the symbol → (meaning "CONTINUED"), or the symbol ∇ (meaning "END"), whichever applies.

Maps, plates, charts, etc., may be filmed at different reduction ratios. Those too large to be entirely included in one exposure are filmed beginning in the upper left hand corner, left to right and top to bottom, as many frames as required. The following diagrams illustrate the method:



L'exemplaire filmé fut reproduit grâce à la générosité de:

Thomas Fisher Rare Book Library,  
University of Toronto Library,

Les images suivantes ont été reproduites avec le plus grand soin, compte tenu de la condition et de la netteté de l'exemplaire filmé, et en conformité avec les conditions du contrat de filmage.

Les exemplaires originaux dont la couverture en papier est imprimée sont filmés en commençant par le premier plat et en terminant soit par la dernière page qui comporte une empreinte d'impression ou d'illustration, soit par le second plat, selon le cas. Tous les autres exemplaires originaux sont filmés en commençant par la première page qui comporte une empreinte d'impression ou d'illustration et en terminant par la dernière page qui comporte une telle empreinte.

Un des symboles suivants apparaîtra sur la dernière image de chaque microfiche, selon le cas: le symbole → signifie "A SUIVRE", le symbole ∇ signifie "FIN".

Les cartes, planches, tableaux, etc., peuvent être filmés à des taux de réduction différents. Lorsque le document est trop grand pour être reproduit en un seul cliché, il est filmé à partir de l'angle supérieur gauche, de gauche à droite, et de haut en bas, en prenant le nombre d'images nécessaire. Les diagrammes suivants illustrent la méthode.

ONTARIO ELECTIONS, 1894.

---

INSTRUCTIONS FOR AGENTS  
OF  
LIBERAL CANDIDATES  
AT THE POLLS.

---

The Voters' List under the Franchise Act, must give the name of every Voter. No person can vote more than once, and only then in the subdivision of the electoral district in which he resides. "ONE-MAN, ONE VOTE."

*Opening of Poll.*

1. The poll opens at 9 a.m. and closes at 5 p.m.

*Oath of Secrecy.*

2. Take the oath of secrecy before a Magistrate, if possible, previous to polling day, and hand it and your appointment as Agent, to the Deputy Returning Officer before the poll opens. The Deputy Returning Officer will, if required, put the oath of secrecy to any Agent. If he has no single form he can read it from the Election Act, form No. 27.

*Prepare Voters' List.*

3. Have a Voters' List carefully prepared, with notes for your guidance. Each name should be marked, "Liberal," "Conservative," "Patron," or "Doubtful," or to be objected to, or to be sworn. Be prepared to sustain the cause of any of your own voters who may be objected to by the opposing Agent.

*Check off Voters.*

4. Check off your list each voter as he votes, and specially note those sworn.

*Causes of Objection.*

5. Objection must be taken against an elector voting. (1) If he is not twenty-one years of age. (2) Is not a subject of Her Majesty. (3) If you believe he has been offered any inducement to vote, directly or indirectly, or for loss of time, travelling expenses, or hire of team. (4) If he has not been continuously for the six months immediately preceding the date of election, a resident of the electoral district (except Manhood Suffrage Electors). (5) If you believe he has voted elsewhere. (6) If he is not now a resident of that electoral district.

When an opposing Scrutineer asks to have a voter sworn, be sure to see that the voter knows which side has objected to his vote.

*Disqualified from Voting.*

6. The following are disqualified from voting: Judges, Customs Officers, Clerks of the Peace, County Attorneys, Registrars, Sheriffs, Deputy Sheriffs, Deputy Clerks of the Crown, Crown Land Agents, Postmasters in cities or towns, Stipendiary Magistrates, Police Magistrates in cities having a population of 30,000 and over, and Excise Officers.

7. No Returning Officer, Election Clerk, or person employed for any remuneration whatever, in assisting a Candidate is entitled to vote. This does not apply to Deputy Returning Officers and Poll Clerks. A person temporarily absent in the prosecution of his occupation, as Lumberman, Mariner, Fisherman or a student in Canada shall not be disqualified.

*Requisites by D. R. O. or Agents.*

8. Each voter, if required by the Deputy Returning Officer, must state his name and surname, and calling. (1) The Deputy Returning Officer, Poll Clerk, or Agents have no authority to question a voter's qualifications. (2) It is your duty as Agent to protect a friendly voter from intimidation.

*Examining Ballots.*

9. Watch every ballot before being handed to voter to see that it is clean and that the Deputy Returning Officer places his initials on back of ballot before handing to voter. On the voter returning it see that the Deputy Returning Officer places it in the box without marking it in any way.

*About Voting.*

10. Do not on any pretext whatever allow friendly voters to leave the table without voting. No voter having refused the oath can subsequently be admitted to vote. If a voter after the oath is administered to him by the Deputy Returning Officer, intimates his refusal to take the oath by placing the Bible on the table, he cannot take it up again for the purpose of taking the oath and voting.

11. Do not allow Tory Scrutineers to question or threaten voters. All that can be required of the voter is that he shall take the oath provided by law. Instruct voters not to answer any questions asked by opposition Scrutineers.

A tendered ballot may be used if a person's name has been omitted from the Deputy Returning Officers list in the poll-book, it having appeared in the original list certified by the County Judge. (Election Act, clause 108, page 46.)

Every Scrutineer should understand thoroughly the "Manhood Franchise" qualifications and the oaths connected with the same, so that no legal chance to object to an unfriendly voter may be missed.

12. Carry out the instructions received by you from the committee to the letter, and have every voter sworn whom you find on your book marked to be sworn.

*Oath of Qualification.*

13. Any elector, if required by the Deputy Returning Officer, Poll Clerk, or any Agent present, shall take the oath of qualification before voting.

*Personation.*

14. A voter who has been personated can vote on taking the oath to establish his identity.

*Spoiled Ballots.*

15. A voter who has spoiled his ballot paper is entitled to another on returning the spoiled paper to the Deputy Returning Officer.

16. Do not name or write the Voters' List in the polling booth.

17. Before polling booth.

18. At the Returning Office votes cast for given to you. ballot box, see

19. Keep ed to.

20. Request of ballots for leave the poll

21. Do not privilege to h

22. A w making or se

23. BAU

1. With across the ce an anchor.

2. An in cross. (Mor

3. A cr

4. A cr name, and t

5. A do

6. Ball

7. Inad

8. Cros

BALLOT

1. A st

2. Two

3. Ball (North Vie

4. Ball

*Mis-spelling of Voter's Name.*

16. Do not let a friendly vote be lost on account of the mis-spelling of the voter's name or a wrong christian name. If the voter is the person purporting to be named in the Voters' List he can vote.

17. Before the poll closes, see that two Scrutineers for your Candidate are in the polling booth.

*Counting the Ballots.*

18. At the close of the poll one Scrutineer should see the ballots as the Deputy Returning Officer calls the names, the other keeping tally. (1) See that statement of votes cast for each Candidate is made out by Deputy Returning Officer and Agents, and given to you. (2) And that all other papers used at the election are deposited in the ballot box, sealed by you, and stamped with a seal before leaving the room.

*Fac-similes of Ballots.*

19. Keep a memoranda of fac-similes of the marks on each ballot rejected or objected to.

*Certificates of vote polled.*

20. Require the Deputy Returning Officer to give you a certificate of (1) the number of ballots for each Candidate, (2) the number of rejected ballot papers, and on no account leave the polling booth for an instant until you receive it.

*Special Caution.*

21. Do not enter into any arrangement with opposing Scrutineers waiving your privilege to have voters sworn.

*Effect of good Scrutineering.*

22. A well informed and properly qualified Scrutineer may have opportunities of making or saving at least four votes in his subdivision, and this may win the Election.

**23. BALLOTS MARKED AS FOLLOWS ARE GOOD:—**

1. With an illformed cross, or with small lines at the end of cross, or with a line across the centre or one of the lines of the cross, or with a curved line like the blades of an anchor. (North Victoria Case, Hodgins, p. 671.)

2. An irregular mark in the figure of a cross, so long as it does not lose the form of a cross. (Monk Case, Hodgins, p. 725.)

3. A cross with a line before it. (Monk Case.)

4. A cross rightly placed with two additional crosses, one across the other candidate's name, and the other to the left. (Monk Case.)

5. A double cross or two crosses. (Monk Case.)

6. Ballot paper inadvertently torn. (Monk Case.)

7. Inadvertent marks in addition to the cross. (Monk Case.)

8. Cross made with pen and ink instead of pencil. (Monk Case.)

**BALLOTS MARKED AS FOLLOWS ARE BAD:—**

1. A single stroke instead of a cross. (Monk Case; North Victoria Case.)

2. Two single strokes not crossing. (Monk Case.)

3. Ballots with the candidate's name written thereon in addition to the cross. (North Victoria Case.)

4. Ballots marked with a number of lines. (North Victoria Case.)



5. Ballots with a cross for each candidate. (North Victoria Case.)

6. All those upon which there is any writing or mark by which the voter can be identified.

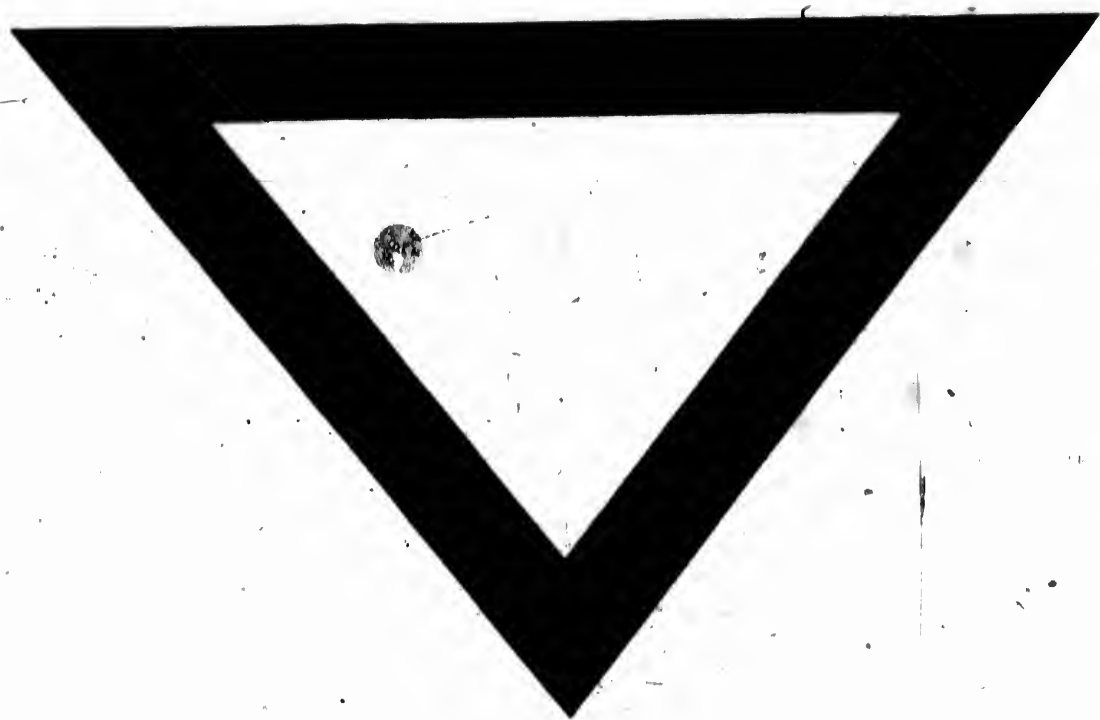
Oaths having reference to the following subjects will be found in the Election Act.

Secrecy of voting, for agents .....	Form 13.
Manhood Suffrage, ordinary cases .....	" 14.
Manhood Suffrage, elections in cities .....	" 16A.
Where no Assessment Roll, Algoma, etc .....	" 20.
Resident/Householder's oath .....	" 21.
Inability to read .....	" 22.
Name not on Voters' List re Tendered Ballot .....	" 24.

---

**FAC-SIMILE OF REJECTED BALLOTS.**







571

