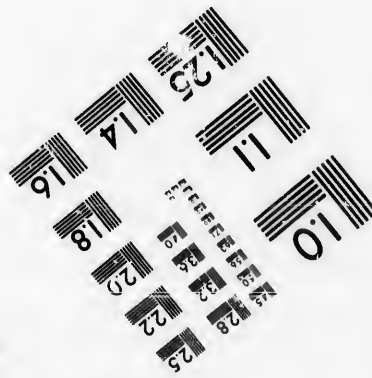
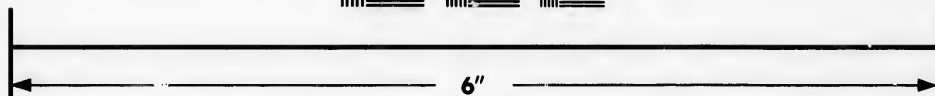
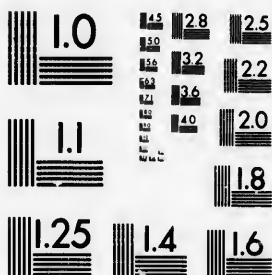


**IMAGE EVALUATION
TEST TARGET (MT-3)**



**Photographic
Sciences
Corporation**

23 WEST MAIN STREET
WEBSTER, N.Y. 14590
(716) 872-4503



**CIHM/ICMH
Microfiche
Series.**

**CIHM/ICMH
Collection de
microfiches.**



Canadian Institute for Historical Microreproductions / Institut canadien de microreproductions historiques



© 1986

Technical and Bibliographic Notes/Notes techniques et bibliographiques

The Institute has attempted to obtain the best original copy available for filming. Features of this copy which may be bibliographically unique, which may alter any of the images in the reproduction, or which may significantly change the usual method of filming, are checked below.

L'Institut a microfilmé le meilleur exemplaire qu'il lui a été possible de se procurer. Les détails de cet exemplaire qui sont peut-être uniques du point de vue bibliographique, qui peuvent modifier une image reproduite, ou qui peuvent exiger une modification dans la méthode normale de filmage sont indiqués ci-dessous.

- Coloured covers/
Couverture de couleur
- Covers damaged/
Couverture endommagée
- Covers restored and/or laminated/
Couverture restaurée et/ou pelliculée
- Cover title missing/
Le titre de couverture manque
- Coloured maps/
Cartes géographiques en couleur
- Coloured ink (i.e. other than blue or black)/
Encre de couleur (i.e. autre que bleu ou noire)
- Coloured plates and/or illustrations/
Planches et/ou illustrations en couleur
- Bound with other material/
Relié avec d'autres documents
- Tight binding may cause shadows or distortion
along interior margin/
La reliure serrée peut causer de l'ombre ou de la
distorsion le long de la marge intérieure
- Blank leaves added during restoration may
appear within the text. Whenever possible, these
have been omitted from filming/
Il se peut que certaines pages blanches ajoutées
lors d'une restauration apparaissent dans le texte,
mais, lorsque cela était possible, ces pages n'ont
pas été filmées.
- Additional comments:/ [Printed ephemera] [6]p.
Commentaires supplémentaires:

- Coloured pages/
Pages de couleur
- Pages damaged/
Pages endommagées
- Pages restored and/or laminated/
Pages restaurées et/ou pelliculées
- Pages discoloured, stained or foxed/
Pages décolorées, tachetées ou piquées
- Pages detached/
Pages détachées
- Showthrough/
Transparence
- Quality of print varies/
Qualité inégale de l'impression
- Includes supplementary material/
Comprend du matériel supplémentaire
- Only edition available/
Seule édition disponible
- Pages wholly or partially obscured by errata
slips, tissues, etc., have been refilmed to
ensure the best possible image/
Les pages totalement ou partiellement
obscurcies par un feuillet d'errata, une pelure,
etc., ont été filmées à nouveau de façon à
obtenir la meilleure image possible.

This item is filmed at the reduction ratio checked below/
Ce document est filmé au taux de réduction indiqué ci-dessous.

| | | | | | |
|--------------------------|--------------------------|--------------------------|-------------------------------------|--------------------------|--------------------------|
| 10X | 14X | 18X | 22X | 26X | 30X |
| <input type="checkbox"/> | <input type="checkbox"/> | <input type="checkbox"/> | <input checked="" type="checkbox"/> | <input type="checkbox"/> | <input type="checkbox"/> |
| 12X | 16X | 20X | 24X | 28X | 32X |

The copy filmed here has been reproduced thanks to the generosity of:

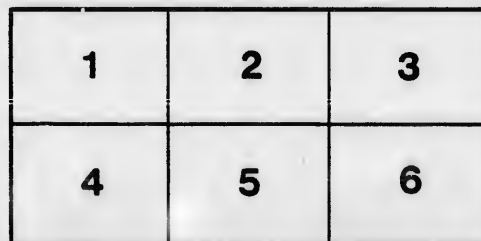
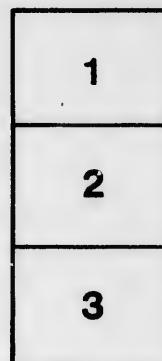
D. B. Weldon Library
University of Western Ontario
(Regional History Room)

The images appearing here are the best quality possible considering the condition and legibility of the original copy and in keeping with the filming contract specifications.

Original copies in printed paper covers are filmed beginning with the front cover and ending on the last page with a printed or illustrated impression, or the back cover when appropriate. All other original copies are filmed beginning on the first page with a printed or illustrated impression, and ending on the last page with a printed or illustrated impression.

The last recorded frame on each microfiche shall contain the symbol \rightarrow (meaning "CONTINUED"), or the symbol ∇ (meaning "END"), whichever applies.

Maps, plates, charts, etc., may be filmed at different reduction ratios. Those too large to be entirely included in one exposure are filmed beginning in the upper left hand corner, left to right and top to bottom, as many frames as required. The following diagrams illustrate the method:



L'exemplaire filmé fut reproduit grâce à la générosité de:

D. B. Weldon Library
University of Western Ontario
(Regional History Room)

Les images suivantes ont été reproduites avec le plus grand soin, compte tenu de la condition et de la netteté de l'exemplaire filmé, et en conformité avec les conditions du contrat de filmage.

Les exemplaires originaux dont la couverture en papier est imprimée sont filmés en commençant par le premier plat et en terminant soit par la dernière page qui comporte une empreinte d'impression ou d'illustration, soit par le second plat, selon le cas. Tous les autres exemplaires originaux sont filmés en commençant par la première page qui comporte une empreinte d'impression ou d'illustration et en terminant par la dernière page qui comporte une telle empreinte.

Un des symboles suivants apparaîtra sur la dernière image de chaque microfiche, selon le cas: le symbole \rightarrow signifie "A SUIVRE", le symbole ∇ signifie "FIN".

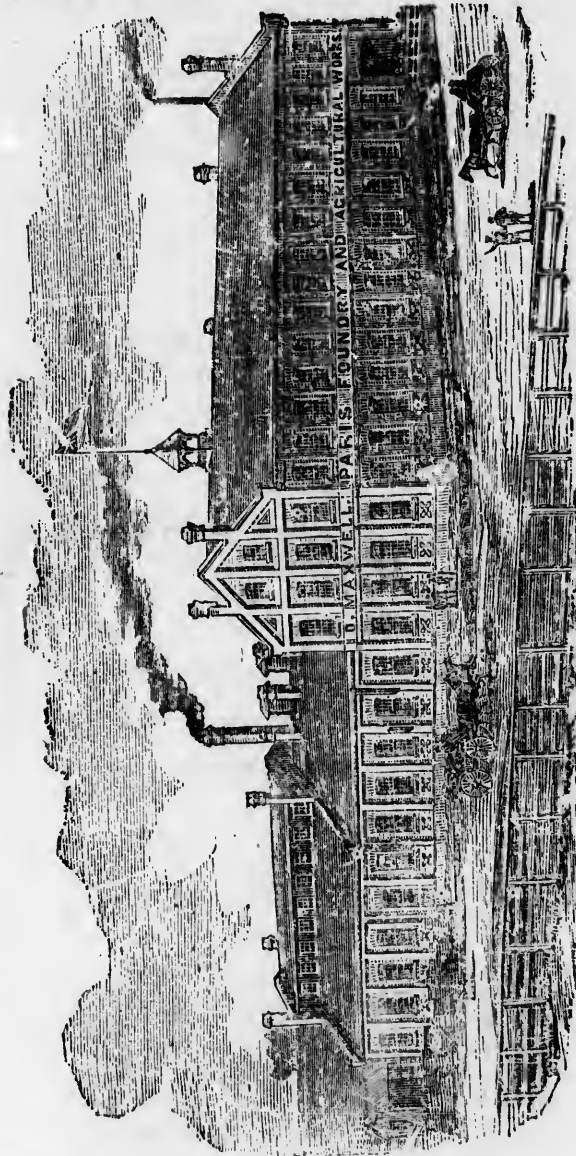
Les cartes, planches, tableaux, etc., peuvent être filmés à des taux de réduction différents. Lorsque le document est trop grand pour être reproduit en un seul cliché, il est filmé à partir de l'angle supérieur gauche, de gauche à droite, et de haut en bas, en prenant le nombre d'images nécessaire. Les diagrammes suivants illustrent la méthode.

1894.

1884.

PARIS FOUNDRY
AND
AGRICULTURAL WORKS.

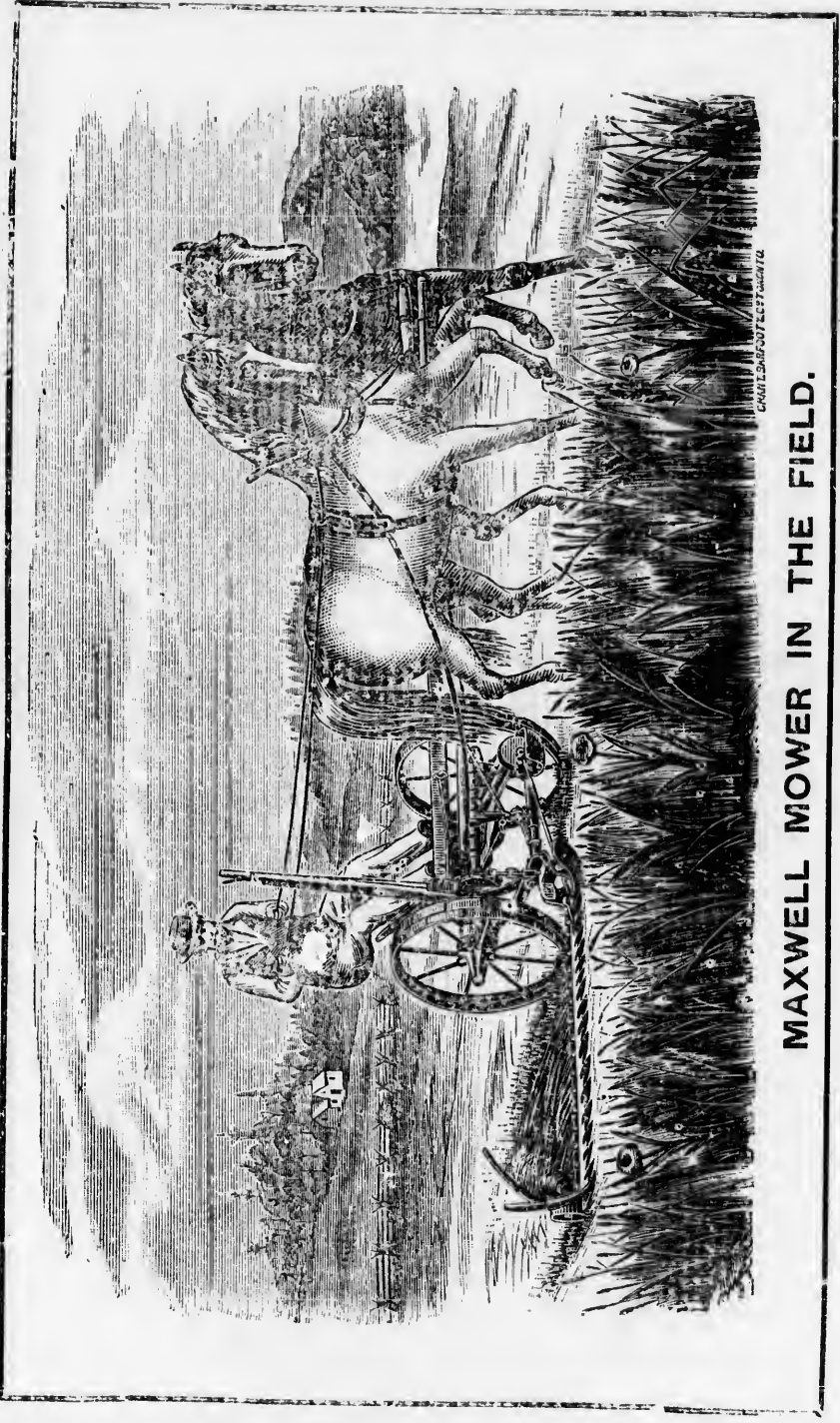
REAPERS, MOWERS, RAKES.



HARVESTER BINDERS.

ADDRESS :

DAVID MAXWELL,
PARIS, ONTARIO,
CANADA.



MAXWELL MOWER IN THE FIELD.

Copyright 1877

MAXWELL BINDERS.

DURING the last two years a demand for Harvester Binders has arisen in Ontario. The Elevating Binder which has been in use in the Western States, was generally used. This machine like the Reapers of former years, has been made too heavy and cumbersome to meet the wants of the progressive farmers of Ontario, and a lighter machine naturally must come to the front. I have been experimenting during two years on a simple platform binder which I shall place in the field this season with my warranty that it will do the work required. I am also making a light Harvester Binder of the elevator class, combining the best features of the best machines now in operation, and one which I can confidently recommend. Samples of each will be placed in the market in April and May, and you will consult your interest by seeing them before buying.

MAXWELL MOWER.

THE LEADING MACHINE.

Successful in Every Case.

During last harvest six hundred of the new Maxwell Mowers were manufactured and sold, and they have given entire satisfaction to purchasers. Their simplicity, combined with ease of management, durability and cutting powers, has given them a foremost place among Canadian Mowers.

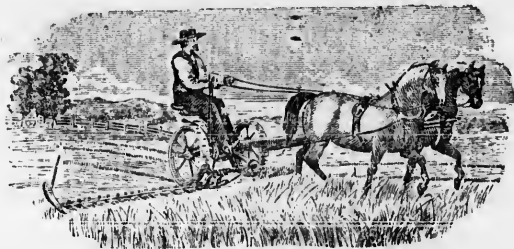
The gearing is completely encased, making it entirely free from dust, ensuring durability and light running.

Can be thrown in or cut of gear when the machine is in motion.

Perfectly balanced and free from side draft.

Patent shoe and wheel specially adapted for crossing furrows or obstructions.

If you wish the most economical and durable mower see the Maxwell before buying.



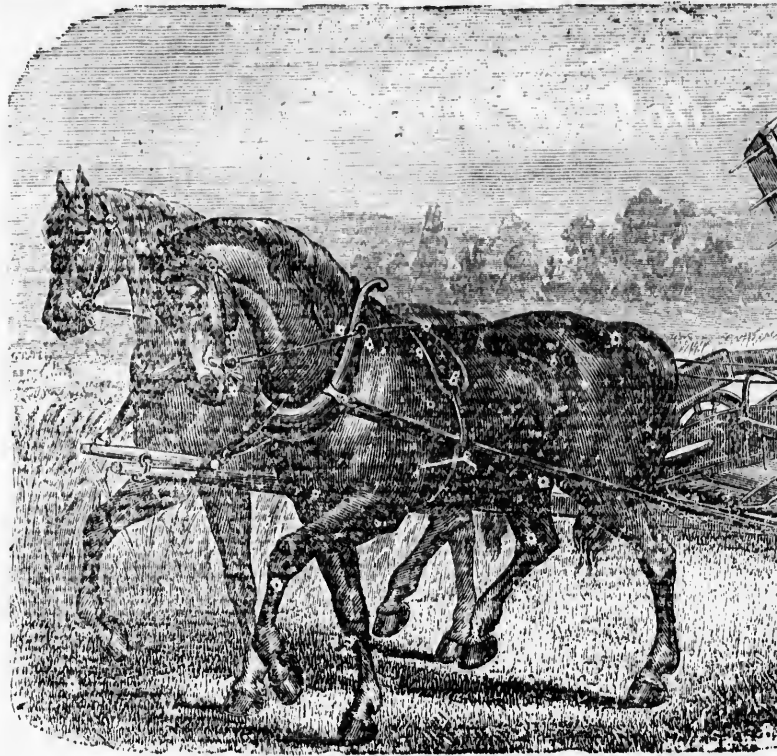
Maxwell Rake!

IMPROVED CONE FRICTION DUMP.
UNEQUALLED IN SIMPLICITY.
STRONG AND DURABLE.
A PERFECT WORKING MACHINE.

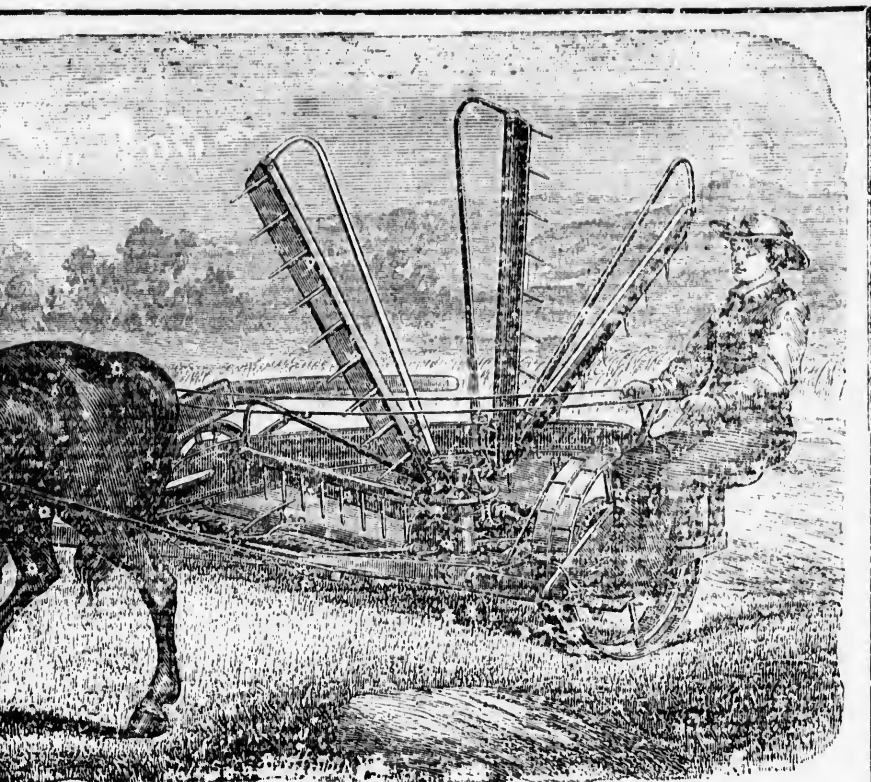
During the last few years special attention has been devoted to the manufacture of my Sulky Rake and the success attained warrants me in claiming for it the foremost place among rakes. Hundreds have been manufactured and sold, and the testimony of many intelligent agriculturists is the best guarantee that the Maxwell Rake is what it is claimed to be.

SEE IT BEFORE BUYING.





MAXWELL REAPER IN



ALL REAPER IN THE FIELD.

