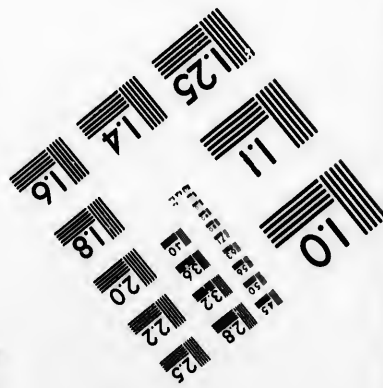
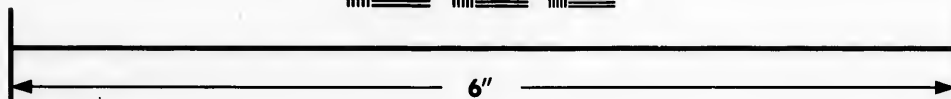
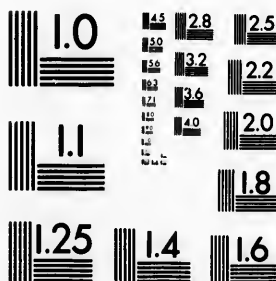


**IMAGE EVALUATION
TEST TARGET (MT-3)**



**Photographic
Sciences
Corporation**

23 WEST MAIN STREET
WEBSTER, N.Y. 14580
(716) 872-4503

Can

**CIHM/ICMH
Microfiche
Series.**

**CIHM/ICMH
Collection de
microfiches.**



Canadian Institute for Historical Microreproductions / Institut canadien de microreproductions historiques

© 1984

Technical and Bibliographic Notes/Notes techniques et bibliographiques

The Institute has attempted to obtain the best original copy available for filming. Features of this copy which may be bibliographically unique, which may alter any of the images in the reproduction, or which may significantly change the usual method of filming, are checked below.

L'Institut a microfilmé le meilleur exemplaire qu'il lui a été possible de se procurer. Les détails de cet exemplaire qui sont peut-être uniques du point de vue bibliographique, qui peuvent modifier une image reproduite, ou qui peuvent exiger une modification dans la méthode normale de filmage sont indiqués ci-dessous.

- Coloured covers/
Couverture de couleur
- Covers damaged/
Couverture endommagée
- Covers restored and/or laminated/
Couverture restaurée et/ou pelliculée
- Cover title missing/
Le titre de couverture manque
- Coloured maps/
Cartes géographiques en couleur
- Coloured ink (i.e. other than blue or black)/
Encre de couleur (i.e. autre que bleue ou noire)
- Coloured plates and/or illustrations/
Planches et/ou illustrations en couleur
- Bound with other material/
Relié avec d'autres documents
- Tight binding may cause shadows or distortion
along interior margin/
La reliure serrée peut causer de l'ombre ou de la
distortion le long de la marge intérieure
- Blank leaves added during restoration may
appear within the text. Whenever possible, these
have been omitted from filming/
Il se peut que certaines pages blanches ajoutées
lors d'une restauration apparaissent dans le texte,
mais, lorsque cela était possible, ces pages n'ont
pas été filmées.
- Additional comments:/
Commentaires supplémentaires:

- Coloured pages/
Pages de couleur
- Pages damaged/
Pages endommagées
- Pages restored and/or laminated/
Pages restaurées et/ou pelliculées
- Pages discoloured, stained or foxed/
Pages décolorées, tachetées ou piquées
- Pages detached/
Pages détachées
- Showthrough/
Transparence
- Quality of print varies/
Qualité inégale de l'impression
- Includes supplementary material/
Comprend du matériel supplémentaire
- Only edition available/
Seule édition disponible
- Pages wholly or partially obscured by errata
slips, tissues, etc., have been refilmed to
ensure the best possible image/
Les pages totalement ou partiellement
obscurcies par un feuillet d'errata, une pelure,
etc., ont été filmées à nouveau de façon à
obtenir la meilleure image possible.

This item is filmed at the reduction ratio checked below/
Ce document est filmé au taux de réduction indiqué ci-dessous.

10X	14X	18X	22X	26X	30X
<input type="checkbox"/>	<input type="checkbox"/>	<input type="checkbox"/>	<input type="checkbox"/>	<input checked="" type="checkbox"/>	<input type="checkbox"/>
12X	16X	20X	24X	28X	32X

The co
to the

The im
possib
of the
filming

Origina
beginn
the las
sion, o
other c
first pa
sion, a
or illus

The las
shall c
TINUE
whiche

Maps,
differe
entirel
beginn
right a
require
metho

The copy filmed here has been reproduced thanks to the generosity of:

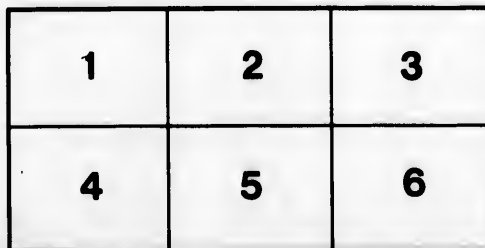
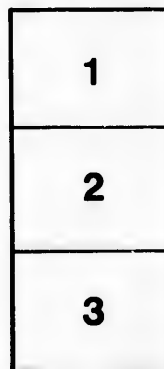
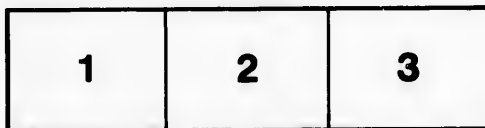
Metropolitan Toronto Library
Canadian History Department

The images appearing here are the best quality possible considering the condition and legibility of the original copy and in keeping with the filming contract specifications.

Original copies in printed paper covers are filmed beginning with the front cover and ending on the last page with a printed or illustrated impression, or the back cover when appropriate. All other original copies are filmed beginning on the first page with a printed or illustrated impression, and ending on the last page with a printed or illustrated impression.

The last recorded frame on each microfiche shall contain the symbol \rightarrow (meaning "CONTINUED"), or the symbol ∇ (meaning "END"), whichever applies.

Maps, plates, charts, etc., may be filmed at different reduction ratios. Those too large to be entirely included in one exposure are filmed beginning in the upper left hand corner, left to right and top to bottom, as many frames as required. The following diagrams illustrate the method:



L'exemplaire filmé fut reproduit grâce à la générosité de:

Metropolitan Toronto Library
Canadian History Department

Les images suivantes ont été reproduites avec le plus grand soin, compte tenu de la condition et de la netteté de l'exemplaire filmé, et en conformité avec les conditions du contrat de filmage.

Les exemplaires originaux dont la couverture en papier est imprimée sont filmés en commençant par le premier plat et en terminant soit par la dernière page qui comporte une empreinte d'impression ou d'illustration, soit par le second plat, selon le cas. Tous les autres exemplaires originaux sont filmés en commençant par la première page qui comporte une empreinte d'impression ou d'illustration et en terminant par la dernière page qui comporte une telle empreinte.

Un des symboles suivants apparaîtra sur la dernière image de chaque microfiche, selon le cas: le symbole \rightarrow signifie "A SUIVRE", le symbole ∇ signifie "FIN".

Les cartes, planches, tableaux, etc., peuvent être filmés à des taux de réduction différents. Lorsque le document est trop grand pour être reproduit en un seul cliché, il est filmé à partir de l'angle supérieur gauche, de gauche à droite, et de haut en bas, en prenant le nombre d'images nécessaire. Les diagrammes suivants illustrent la méthode.

Grand Reception

TO

Sir Charles Tupper

Premier and Secretary of State

UNDER THE AUSPICES OF THE

Conservative Association, and The Industrial League

..In

Massey Hall The Pavilion and Auditorium

Friday Ev'g, June 19th



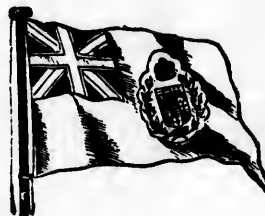
The Old Leader



CHAIR TO BE
TAKEN
AT 8 O'CLOCK,
SHARP.



The Old Policy



The Old Flag

1896

CHAIRMEN

Massey Hall,	-	-	W. R. BROCK
Pavilion,	-	-	P. H. BURTON
Auditorium,	=		C. H. RITCHIE



SPEAKERS

SIR CHARLES TUPPER,	Premier and Secretary of State
HON. D. FERGUSON,	Senator
HON. JOHN BEVERLEY ROBINSON,	Ex-Lieut.-Governor of Ontario
DONALD MACMASTER, Q.C.,	Montreal
E. COATSWORTH,	Candidate East Toronto
G. R. R. COCKBURN,	Candidate Centre Toronto
E. F. CLARKE,	Candidate West Toronto
E. B. OSLER,	Candidate West Toronto



National Prosperity

Patriotic Self Reliance

Canada for Canadians



*The Paper on which this Programme
is printed is the*

Superfine Linen Record

*Manufactured by the Rolland Paper Company,
and is equal to any Imported Ledger Paper,
and costs less.*

FOR SALE BY _____

THE BARBER & ELLIS COMPANY

Paper Dealers, Stationers and Envelope Makers,

Nos. 43, 45, 47, 49 BAY STREET, - - TORONTO



This is one of the many industries built up by

...THE NATIONAL POLICY...

Without it, this grade of paper would not have been manufactured in Canada.



CAMPAIGN SONG No. 1.
Rally, ye Sons of Protection.

Air—"The Red, White and Blue."

I.

Now rise up men of the nation,
Rise up at your country's command ;
Come forward whatever your station,
And shoulder to shoulder we'll stand.
We may differ in creed and in color,
French and English; and Red men are we ;
But we're one for our cause and our country,
We are one for the good old N.P.

CHORUS :

Then three cheers for the good old N.P.,
Give a hearty three times three ;
We are one for our cause and our country,
We are one for the good old N.P.

ii.

It has nourished the son of the city,
It has nourished the son of the soil ;
Surrounded the workmen with plenty,
Awarded with wages his toil.
It has fed both the lordly and lowly,
And master and man will agree ;
And its foes are admitting, tho' slowly,
Success means, the good old N.P.

—CHORUS.

III.

So rally ye sons of Protection,
And shoulder to shoulder we'll stand ;
We'll gather from every direction,
From seashore and lakeside and land.
For the tariff that fostered and fed us,
From the hour of its birth we began
To know, to prosperity it led us,
And we'll stand by it now to a man.

—CHORUS.

E. PAULINE JOHNSON.

CAMPAIGN SONG No. 2.
Stand Fast for Protection.

Air—"Tramp, Tramp, Tramp."

I.

Nature with a bounteous hand, has enriched our
native land ;
With her gifts of forest, field and mine and sea ;
With Canadian pluck and skill, fostered by Protec-
tion still,
None can say how bright our future yet shall be.

CHORUS—

Stand fast, brothers for Protection,
Tell its virtues o'er and o'er ;
We have proved it in the past, we'll defend it to
the last,
Getting blessing from it ever more and more.

II.

Proper tariff legislation, giveth healthy stimulation,
Every class and trade the magic touch doth feel :
Labor heeds the call that's made, handsome wages
earned and paid,
And the people leap by bounds to higher weal.

—CHO.

III.

Our own Canada's domain, boundless riches doth
contain,
Nothing lacketh that a nation's growth befits ;
Enterprise that true and bold, will transmute the
whole to gold,
And confound the monstrous folly of the Grits.

—CHO.

SHRM.

Campaign Song No. 3.
For Home and Native Land.

Air—"Marching Thro' Georgia."

I.

Come, rally 'round the flag again, Canadians good and
true,
Protection is in danger, and our country looks to
you ;
To keep our factories humming, and defeat the free
trade crew.
And once more go marching to victory.

CHORUS—

Hurrah, hurrah, for home and native land !
Hurrah, hurrah, for Protection we must stand,
We have a loyal leader, and under his command,
We'll carry his banner to victory.

II.

If Laurier should win the day, then things would go
to rack ;
The wheels of industry will stop, and men will get
the sack ;
And if you cross the line for work they'll quickly send
you back,
For Yankees believe in Protection.

CHORUS—

Hurrah, hurrah, for the red, white and blue ;
Hurrah, hurrah, for Tupper good and true ;
He's fighting for our Canada, and we will see him
through.
As we go marching to victory.

E. CARSWELL.

