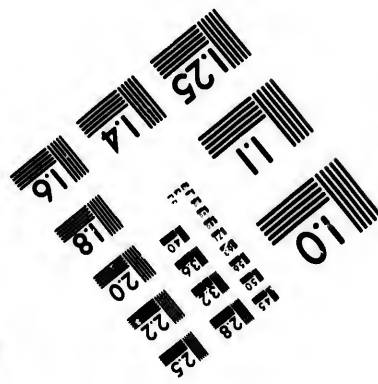
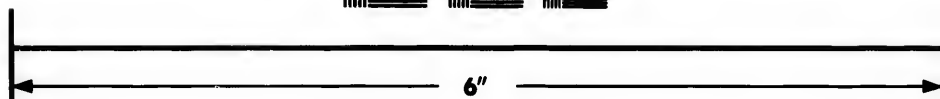
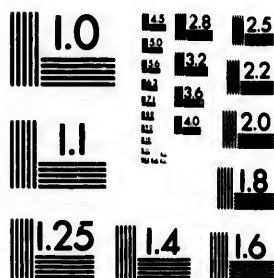


**IMAGE EVALUATION  
TEST TARGET (MT-3)**



**Photographic  
Sciences  
Corporation**

23 WEST MAIN STREET  
WEBSTER, N.Y. 14580  
(716) 872-4503



**CIHM/ICMH  
Microfiche  
Series.**

**CIHM/ICMH  
Collection de  
microfiches.**



**Canadian Institute for Historical Microreproductions / Institut canadien de microreproductions historiques**



**© 1986**

Technical and Bibliographic Notes/Notes techniques et bibliographiques

The Institute has attempted to obtain the best original copy available for filming. Features of this copy which may be bibliographically unique, which may alter any of the images in the reproduction, or which may significantly change the usual method of filming, are checked below.

L'Institut a microfilmé le meilleur exemplaire qu'il lui a été possible de se procurer. Les détails de cet exemplaire qui sont peut-être uniques du point de vue bibliographique, qui peuvent modifier une image reproduite, ou qui peuvent exiger une modification dans la méthode normale de filmage sont indiqués ci-dessous.

- Coloured covers/  
Couverture de couleur
- Covers damaged/  
Couverture endommagée
- Covers restored and/or laminated/  
Couverture restaurée et/ou pelliculée
- Cover title missing/  
Le titre de couverture manque
- Coloured maps/  
Cartes géographiques en couleur
- Coloured ink (i.e. other than blue or black)/  
Encre de couleur (i.e. autre que bleue ou noire)
- Coloured plates and/or illustrations/  
Planches et/ou illustrations en couleur
- Bound with other material/  
Relié avec d'autres documents
- Tight binding may cause shadows or distortion  
along interior margin/  
La reliure serrée peut causer de l'ombre ou de la  
distorsion le long de la marge intérieure
- Blank leaves added during restoration may  
appear within the text. Whenever possible, these  
have been omitted from filming/  
Il se peut que certaines pages blanches ajoutées  
lors d'une restauration apparaissent dans le texte,  
mais, lorsque cela était possible, ces pages n'ont  
pas été filmées.
- Additional comments:/  
Commentaires supplémentaires:

- Coloured pages/  
Pages de couleur
- Pages damaged/  
Pages endommagées
- Pages restored and/or laminated/  
Pages restaurées et/ou pelliculées
- Pages discoloured, stained or foxed/  
Pages décolorées, tachetées ou piquées
- Pages detached/  
Pages détachées
- Showthrough/  
Transparence
- Quality of print varies/  
Qualité inégale de l'impression
- Includes supplementary material/  
Comprend du matériel supplémentaire
- Only edition available/  
Seule édition disponible
- Pages wholly or partially obscured by errata  
slips, tissues, etc., have been refilmed to  
ensure the best possible image/  
Les pages totalement ou partiellement  
obscurcies par un feuillet d'errata, une pelure,  
etc., ont été filmées à nouveau de façon à  
obtenir la meilleure image possible.

This item is filmed at the reduction ratio checked below/  
Ce document est filmé au taux de réduction indiqué ci-dessous.

10X	14X	18X	22X	26X	30X
<input type="checkbox"/>	<input type="checkbox"/>	<input type="checkbox"/>	<input checked="" type="checkbox"/>	<input type="checkbox"/>	<input type="checkbox"/>
12X	16X	20X	24X	28X	32X

The copy filmed here has been reproduced thanks to the generosity of:

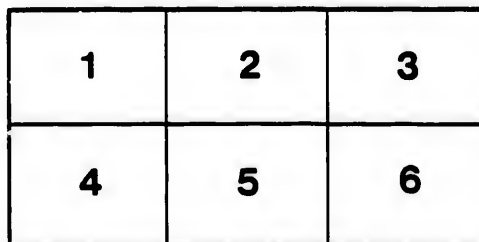
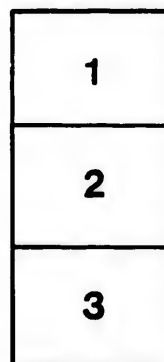
D. B. Weldon Library  
University of Western Ontario  
(Regional History Room)

The images appearing here are the best quality possible considering the condition and legibility of the original copy and in keeping with the filming contract specifications.

Original copies in printed paper covers are filmed beginning with the front cover and ending on the last page with a printed or illustrated impression, or the back cover when appropriate. All other original copies are filmed beginning on the first page with a printed or illustrated impression, and ending on the last page with a printed or illustrated impression.

The last recorded frame on each microfiche shall contain the symbol  $\rightarrow$  (meaning "CONTINUED"), or the symbol  $\nabla$  (meaning "END"), whichever applies.

Maps, plates, charts, etc., may be filmed at different reduction ratios. Those too large to be entirely included in one exposure are filmed beginning in the upper left hand corner, left to right and top to bottom, as many frames as required. The following diagrams illustrate the method:



L'exemplaire filmé fut reproduit grâce à la générosité de:

D. B. Weldon Library  
University of Western Ontario  
(Regional History Room)

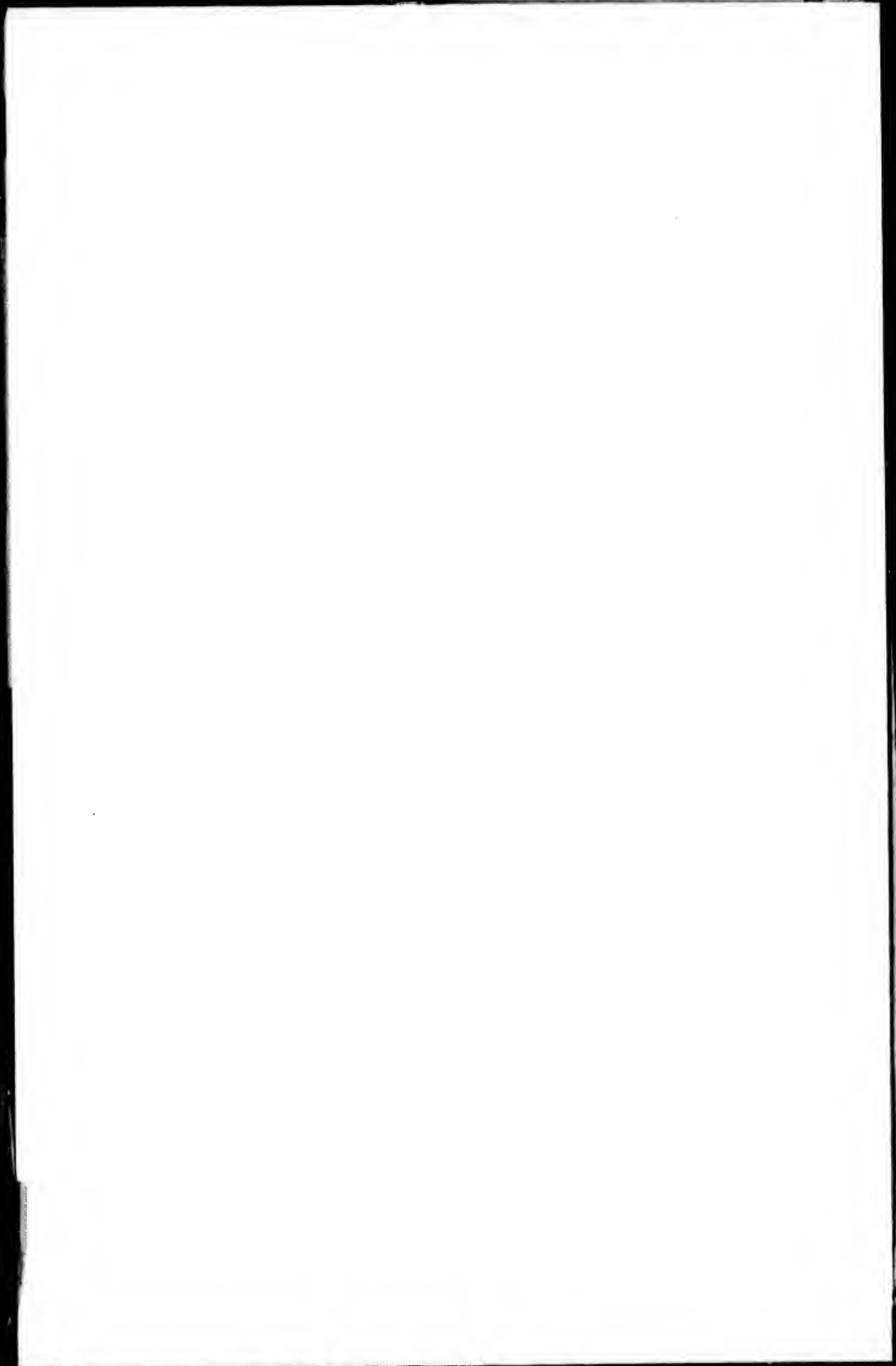
Les images suivantes ont été reproduites avec le plus grand soin, compte tenu de la condition et de la netteté de l'exemplaire filmé, et en conformité avec les conditions du contrat de filmage.

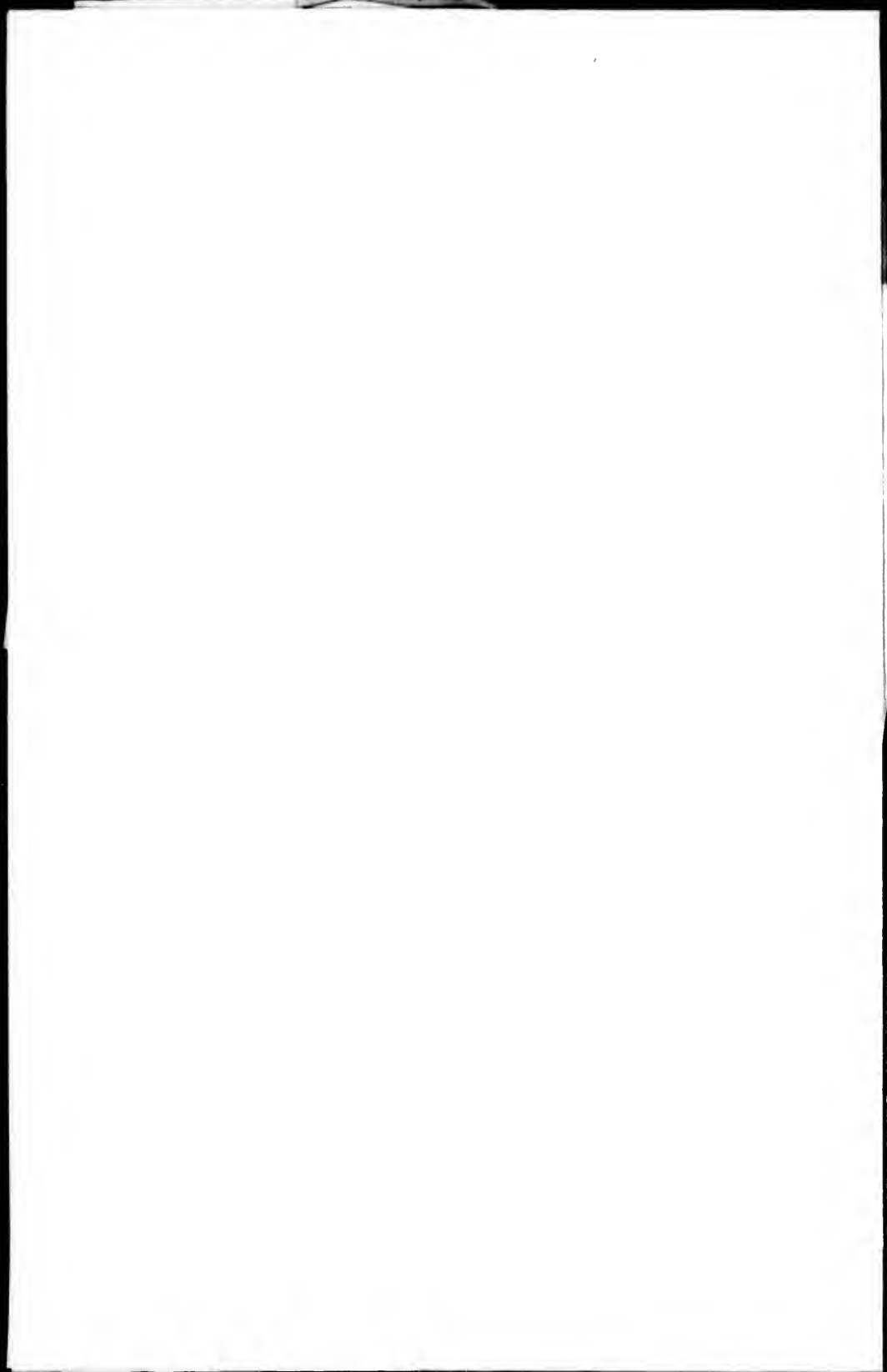
Les exemplaires originaux dont la couverture en papier est imprimée sont filmés en commençant par le premier plat et en terminant soit par la dernière page qui comporte une empreinte d'impression ou d'illustration, soit par le second plat, selon le cas. Tous les autres exemplaires originaux sont filmés en commençant par la première page qui comporte une empreinte d'impression ou d'illustration et en terminant par la dernière page qui comporte une telle empreinte.

Un des symboles suivants apparaîtra sur la dernière image de chaque microfiche, selon le cas: le symbole  $\rightarrow$  signifie "A SUIVRE", le symbole  $\nabla$  signifie "FIN".

Les cartes, planches, tableaux, etc., peuvent être filmés à des taux de réduction différents. Lorsque le document est trop grand pour être reproduit en un seul cliché, il est filmé à partir de l'angle supérieur gauche, de gauche à droite, et de haut en bas, en prenant le nombre d'images nécessaire. Les diagrammes suivants illustrent la méthode.







# VOTERS' LIST, 1897.

## TOWNSHIP OF WEST NISSOURI.

### SCHEDULE OF POST OFFICES.

- |                   |                |                |
|-------------------|----------------|----------------|
| 1. CRUMLIN.       | 2. REBECCA.    | 3. WYTON.      |
| 4. THORNDALE.     | 5. EVELYN.     | 6. THAMESFORD. |
| 7. COBBLE HILL.   | 8. ST. IVES.   | 9. DEVIZES.    |
| 10. CHERRY GROVE. | 11. WELLBURN.  | 12. BELTON.    |
| 13. OLIVER.       | 14. ST. MARYS. | 15. LONDON.    |
| 16. PLOVER MILLS. | 17. LEESBORO.  |                |

Abbreviations—f, farmer; m f, manhood franchise; o, owner; oc, occupant; ten, tenant; f s, farmer's son.

### Polling Sub-Division No. 1.

From Lots 1 to 10, both inclusive, in the First, Second and Third Concessions, and west half of the Fourth Concession.

PART I—Persons entitled to vote at both Municipal Elections and Elections to the Legislative Assembly.

NO. ON ROLL	JURORS	NAME	OCCUPATION	ADDITIONS	CONCESSION	LOT	POSTOFFICE
127	j	Angus James	f . . . . . m f and o		3	10	3
245	j	Ashman Mark	f . . . . . m f and o		1	5	2
246	j	Ashman Charles	f . . . . . m f and o		1	5	2
247	j	Ashman Wm	f . . . . . m f and o		1	5	2
248	j	Ashman Frank	f . . . . . m f and o		1	5	2
278	j	Alford George	f . . . . . m f and ten		1	9	2
279	j	Alford Hugh	f . . . . . m f and ten		1	9	2
171	j	Blight George	f . . . . . m f and ten		2	10	3
172	j	Blight Hugh	f . . . . . m f and ten		2	10	3



## SUB-DIVISION No. 1.

NO. ON ROLL	JURORS	NAME	OCCUPATION	ADDITIONS	CONCESSION	LOT	POSTOFFICE
177	j	Brown John A. ....	f....m f and oc		2	<del>7</del> 6	3 <i>W</i>
180	j	Bailey Fred....	f....m f and o		1	6	2
181	j	Bailey Wm ..	f...m f and o		1	6	2
188	j	Brown James ....	f....m f and o		3	9	2
199	j	Baskerville David..	f...m f and o		4	5	5
200	j	Bedggood Thomas ....	f....m f and o		4	4	1
201	j	Bedggood Thomas E....	f... f s		4	4	1
216	j	Bailey Wm....	f...m f and o		2	2	1
217	j	Bailey Adam.....	f...m f and o		2	2	1
224	j	Brown Arthur E. ....	f...m f and o		2	4	2
227	j	Bourne Septimous.....	f....m f and o		2	5	2
303	j	Bedggood David .....	f....m f and o		4	9	4
		↓					
183	j	Clark John....	f....m f and o		2	6	2
186	j	Case Harry.....	f....m f and ten		2	8	2
249	j	Clifford Patrick.....	f....m f and o		1	3	2
189	j	Duffin Albert.....	f...m f and o		3	9	2
190	j	Duffin W. G.....	f...m f and f s		3	9	2
191	j	Duffin W. F.....	f...m f and f s		3	9	2
192	j	Duffin Thomas .....	f....m f and o		3	9	2
197	j	Duffin Henry .....	f....m f and o		3	6	2
232	j	Duffin Robert .....	f....m f and o		3	6	2
233	j	Duffin Alexander.....	f....m f and o		3	6	2
234	j	Duffin W. J. A .....	f...m f and o		3	6	2
239	j	Duffin Samuel.....	f....m f and o		2	5	2
240	j	Duffin Joseph E .....	f....m f and o		2	5	2
244	j	Dyer Thomas .....	f...m f and o		4	1	1
211	j	Dixon John .....	f....m f and o		1	4	2
226		Ede John.....	f....m f and o		2	4	2
262		Eyre Henry B. ....	f....m f and o		1	1	1

SUB-DIVISION No. 1.

3

POSTOFFICE

3  
2  
2  
2  
5  
1  
1  
1  
1  
2  
2  
4  
  
2  
2  
2  
  
2  
2  
2  
2  
2  
2  
2  
2  
1  
2  
  
2  
2  
2  
2  
1  
2  
  
2  
1

NO. ON ROLL	JURORS	NAME	OCCUPATION	ADDITIONS	CONCESSION	LOT	POSTOFFICE
184	j	Farley Thomas	f. ...m f and o		2	7	2
195	j	Fitzgerald Charles	f. ....m f and o		3	7	2
221	j	Fitzgerald Richard	f. ....m f and o		3	3	2
222	j	For Richard	f. ....m f and o		2	3	1
223	j	For William	f. ....m f and o		2	3	1
281	j	Flanigan Dennis	f .. m f and o		1	5	2
282	j	Flanigan Dennis, jr	f. ....m f and o		1	5	2
183	j	Fallon Patrick	f. ....m f and o		1	10	3
V							
128		Gee Daniel	f. ....m t and o		3	9-10	3
129	j	Gee Wm	f. ....m f and o		3	9-10	3
213	j	Guest William	f. ....m f and o		2	1	1
V							
275	j	Howay Chas	f. ....m f and o		1	7-8	2
276	j	Howay Thomas	f. ....m f and o		1	7-8	2
182		Horn Thomas	f. ....m t and o		2	6	2
198	j	Harris John	f. ....m f and o		3	5	2
231	j	Heath Arthur	f. ....m f and ten		3	6	2
241	j	Henderson John	f. ....m f and o		1	6	2
242		Henderson Wesley	f. ....m f and o		1	6	2
243	j	Harris Thomas	f. ....m f and o		2	4	2
V							
259		Johnston Joseph	f. ....m f and o		1	1	1
240		Johnston Joseph	f. ....m f and o		2	6	2
210		Judge William	f. ....m f and o		4	7	1
228	j	James James	f. ....m f and o		3	5	2
235	j	Judd George	f. ....m t and o		2	5	2
236	j	Judd Robert	f. ....m f and o		2	6	2
237	j	Judd John	f. ....m f and o		2	6	2

WZ  
WZ

## SUB-DIVISION No. 1.

NO. ON ROLL	JURORS	NAME	OCCUPATION	ADDITIONS	CONCESSION	LOT	POSTOFFICE
252		Lewis James . . . . .	f . . . . .	m t and o	1	3	2
257	j	Logan Edward . . . . .	t . . . . .	m t and o	2	1	1
258		Logan John . . . . .	f . . . . .	m f and o	2	1	1
V							
126	j	Mahon James . . . . .	f . . . . .	m f and ten	4	10	17
174		Martin John . . . . .	f . . . . .	m f and ten	1	9	3
175	j	Martin Albert . . . . .	f . . . . .	m f and ten	1	9	3
207		Monks James . . . . .	f . . . . .	m f and o	3	2	1
208	j	Monks David . . . . .	f . . . . .	m f and o	3	2	1
209	j	Monks James jr . . . . .	f . . . . .	m f and o	4	2	1
219		McDonald John A . . . . .	f . . . . .	m f and ten	3	2	1
V							
		O'Rourke John . . . . .	f . . . . .	m f and o	1	5	2
V							
176	j	Pinel John . . . . .	f . . . . .	m f and o	2	8	3
271		Piper Thomas . . . . .	f . . . . .	m f and o	1	4	1
272	j	Piper William A . . . . .	f . . . . .	m f and o	1	4	1
273		Piper T. J . . . . .	f . . . . .	m f and o	1	4	1
V							
	j	Quiet Taylor . . . . .	f . . . . .	m f and o	3	1	1
214		Quiet Robert . . . . .	f . . . . .	m f and o	3	1	1

*W*

*W*

~~Row III—List of persons entitled to Vote at Parliamentary Elections Only.~~

LOT	POSTOFFICE	NO. ON ROLL	JURORS	NAME	OCCUPATION	ADDITIONS	CONCESSION	LOT	POSTOFFICE
3	2	254	j	Rawling Richard	f... m f and ten		1	1	1
1	1	274		Rogers George	f... m f and o		1	5	2
10	17	169		Scatcherd John N.	f... m f and o		1	10	
9	3	185	j	Stinson Edward	f... m f and o		3	8	2
9	3	194	j	Stinson Robert	f... m f and o		4	7	2
3	1	266	j	Saul Isaac	f... m f and o		1	3	1
2	1	267		Saul William	f... m f and o		1	3	1
2	1	268		Saul George	f... m f and o		1	3	1
2	1	277	j	Stevenson Samuel	f... m f and o		1	8	2
2	1		j	Scatcherd George	f... m f and o		1	9	3
5	2	168	j	Talbot John	f... m f and o		2	10	3
		204	j	Talbot Wm.	f... m f and o		4	3	1
		205		Talbot Leonard	f... m f and ten		4	3	1
				Thompson James	f... m f and ten		1	6	1
8	3	179	j	Urquhart Donald	f... m f and ten		1	7	2
4	1	180	j	Urquhart Edward	f... m f and ten		1	7	2
4	1	255		Wigmore Robert	f... m f and o		1	1	1
4	1	252		Walker Wm.	f... m f and o		2	2	15
4	1	230	j	Wade F.	f... m f and o		3	5	15
1	1	193	j	Woods James	f... m f and o		4	8	2
1	1	202	j	Wade Daniel	f... m f and o		3	4	2

SUB-DIVISION No. 1.

NO. ON ROLL	JURORS	NAME	OCCUPATION	ADDITIONS	CONCESSION	LOT	POSTOFFICE
203	j	Wills Samuel .....	f...m f and o		3	3	1
206	j	Wakeling John .....	f...m f and o		4	2	1
225	j	Wade John .....	f...m f and o		3	4	15
250		Wade Alexander .....	f...m f and o		3	5	15
251	j	Wilson Arthur .....	f...m f and o		2	3	2
252	j	Wilson Frank .....	f...m f and o		2	3	2
260		Young Peter .....	f...m f and o		1	1	1
261		Young William .....	f...m f and o		1	1	1
262		Young E. ....	f...m f and o		1	1	1
263		Young Seth .....	f...m f and o		1	1	1

PART II—List of persons entitled to Vote at Municipal Elections only.

178	Brown Mrs. Ann .....	2	7	2
	Bailey Mrs. ....	1	6	2
220	McKenzie Mrs. ....	3	2	4
187	Stinson Mrs. Wm. ....	2	8	4

*W Jamlin John*

*1. 6 W.L.*

PART III—List of persons entitled to Vote at Parliamentary Elections only.

NO. ON ROLL	JURORS	NAME	OCCUPATION	ADDITIONS	CONCESSION	LOT	POSTOFFICE
170		Beach Frank .....	mf		1	10	3
215		Baker John.....	mf		3	1	1
	<i>W</i>	<i>Ball James</i>	<i>mf</i>	<i>—</i>	<i>2</i>	<i>4</i>	<i>W.L.</i>
	<i>W</i>	<i>Beach Frank</i>	<i>mf</i>		<i>1</i>	<i>10</i>	<i>W.L.</i>
370		Craig Thos.....	mf		4	10	4
	<i>W</i>	<i>Grice George</i>	<i>mf</i>		<i>2</i>	<i>7</i>	<i>W.L.</i>
261		Hodgetts Ernest .....	mf		1	4	1
	<i>W</i>	<i>Ingo Alfred</i>	<i>mf</i>		<i>4</i>	<i>7</i>	<i>W.L.</i>
	<i>W</i>	<i>Miller John</i>	<i>mf</i>		<i>3</i>	<i>8</i>	<i>W.L.</i>
196		McKinnon Laughlin .....	mf		3	7	2
		McConnell William .....	mf		2	7	2
		McFadden Thomas .....	mf		1	10	3
	<i>W</i>	<i>Norton John</i>	<i>mf</i>		<i>4</i>	<i>10</i>	<i>W.L.</i>
	<i>W</i>	<i>Norton Robert</i>	<i>mf</i>		<i>4</i>	<i>10</i>	<i>W.L.</i>
	<i>W</i>	<i>Patton James</i>	<i>mf</i>		<i>3</i>	<i>5</i>	<i>W.L.</i>
238		Ranyard James.....	mf		2	6	2
	<i>W</i>	<i>Rawlings George</i>	<i>mf</i>		<i>2</i>	<i>8</i>	<i>W.L.</i>
		Samson Chas. E.....	mf		3	9	2
218		Stapleton Samuel .....	mf		2	2	1
306		Talbot James.....	mf		2	10	3
307		Talbot Freeman .....	mf		2	10	3

LOT  
 3 1  
 2 1  
 4 15  
 5 15  
 3 2  
 3 2  
  
 I 1  
 I 1  
 I 1  
 I 1  
  
 nly.  
 7 2  
 6 2  
  
 2 4  
  
 8 4  
  
 6 W.L.

**Polling Sub-Division No. 2.** *London*

From Lots 11 to 18, both inclusive, in Concessions 1, 2, 3, and west half of Concession Four.

PART I—Persons entitled to vote at both Municipal Elections and Elections to the Legislative Assembly.

NO. ON ROLL	JURORS	NAME	OCCUPATION	ADDITIONS	CONCESSION	LOT	POSTOFFICE
27	j	Abbott Thomas, King st	f	m f and o		11	4
42	j	Ardiel Robert E., King st	f	m f and o		11	4
50	j	Abbott Arthur, King st	f	m f and o		2, 3	4
117		Ardiel Nelson	f	m f and o	4	14	4
294	j	Ardiel Wm	f	m f and o	1	17	4
292	j	Box Frank	f	m f and o	1	16	4
293		Box Daniel	f	m f and o	1	16	4
16	j	Bailey Hamilton, King st	f	m f and o		5, 6	4
21		Branton Richard, Temp. st	f	m f and ten		7	4
42		Bedgood Robert, King st	f	m f and o		10	4
63	j	Booth Edward, Queen st	f	m f and o		7	4
64		Buckle Alfred, Queen st	f	m f and o		6, 8	4
68		Bradshaw Richard, Queen st	f	m f and o		4, 5	4
72		Barnard Jabez, Queen st	f	m f and ten		9	4
89	j	Bryan Walter	f	m f and o	2	16	4
90		Bryan Joseph	f	m f and o	2	15	
95		Belton Henry	f	m f and o	3	18	4
96	j	Belton George	f	m f and o	3	18	4
116		Banks Arthur	f	m f and ten	4	14	4
135	j	Bailey Wm	f	m f and o	3	12, 13	4
136	j	Bailey Alfred	f	m f and o	3	12, 13	4
166		Booth Edward	f	m f and o	2	13	4
58		Crawford Alex., Main st	f	m f and ten		55	4

st half of  
Elections

LOT  
POSTOFFICE  
11 4  
11 4  
2, 3 4  
14 4  
17 4  
  
16 4  
16 4  
5, 6 4  
7 4  
10 4  
7 4  
6, 8 4  
4, 5 4  
9 4  
16 4  
15 4  
18 4  
18 4  
14 4  
13 4  
13 4  
13 4  
  
55 4

*Dunlop* SUB-DIVISION No. 2 9

NO. ON ROLL	JURORS	NAME	OCCUPATION	ADDITIONS	CONCESSION	LOT	POSTOFFICE
140		Colbert Wm	f	m f and o	3	14	4
141	j	Colbert George	f	m f and o	3	14	4
142		Cunningham James	f	m f and o	2	14	4
143	j	Cunningham Joseph	f	m f and o	2	14	4
144		Clark Thomas	f	m f and ten	2	13	3
1		Dunlop Wm., Har. st		m f and o		6, 7	4
2		Dunlop Wilber, Har. st.		m f and o		6, 7	4
3		Drummond John, Har st.		m f and o		8	4
51	j	Dunn Edward, King st.		m f and o		2	4
102	j	Dean Peter	f	m f and ten	3	18	4
103	j	Dean George	f	m f and ten	3	18	4
138	j	Dawson Joseph	f	m f and o	2	13	4
139	j	Dawson James	f	m f and o	2	13	4
140		Dundass John	f	m f and o	2	11	4
8		Evans Wesley, Har. st		m f and o		3	4
7		Fulcher Peter, Har. st		m f and ten		4	4
9	j	Falconer John		m f and ten		2	4
19		Ford J. W.		m f and o	3	15	4
29	j	Fitzgerald Edward, King st.		m f and o		12, 13	4
30		Fitzgerald W. C., King st.		m f and o		12, 13	4
77		Faircloth Wm., Main st.		m f and o		7	4
113		Fox Jas.		m f and o	3	15	4
114		Fitzsimons George	f	m f and o	4	14	4
115	j	Fitzsimons Samuel	f	m f and o	4	14	4
289		Fitzsimons Thos.	f	m f and o	3	15	4



NO. ON ROLL	JURORS	NAME	OCCUPATION	ADDITIONS	CONCESSION	LOT	POSTOFFICE
290	j	Fitzsimons Jas. K.....	f	m f and o	3	15	4
296	j	Flaherty Matthew.....	f	m f and o	1	18	4
297		Flaherty Jas.....	f	m f and f's	1	18	4
298		Flaherty Matthew.....	f	m f and f s	1	18	4
45		Garner Robert, King st. ....		m f and o		6-7	4
53	j	Guest Wm. A., King st.....		m f and o		1-a	4
61		Griffith Aaron .....		m f and o	3	15	4
6		Harrison Chas., Har. st ....		m f and o		5	4
18		Henghan Wm., King st.....		m f and o	3	15	4
36	j	Hueston Wm. ....		m f and o	4	15	4
41		Hughes F. W., King st. ....		m f and o		15-16	4
46	j	Harding Jas, King st .....		m f and o		5	4
47		Harding Bentwick, King st .		m f and o		5	4
59		Haislop Jas., Main st. ....		m f and o		1, 2	4
84	j	Harding R. H. ....	f	m f and o	1	15	4
287	j	Holland Thos. ....	f	m f and o	2	16	4
291	j	Harding W. B. ....	f	m f and o	1	15	4
23		James Jas.....	f	m f and o	3	16	4
44	j	Kennedy Jas., King st.....				9	4
301		Kellum Jas. F. ....	f	m f and o	1	17	4

SUB-DIVISION No. 2.

LOT	POSTOFFICE	NO. ON ROLL	JURORS	NAME	OCCUPATION	ADDITIONS	CONCESSION	LOT	POSTOFFICE
15	4	32		Lee Chas . . . . .		m f and ten		16	4
18	4	39	j	Large Edward, King st . . . .		m f and o		22	4
18	4	65	j	Lovell Joseph, Queen st. . . . .		m f and o		11	4
18	4	70	j	Lindsay Oliver, Queen st. . . . .		m f and o		43	4
		91	j	Lovatt George . . . . .	f	m f and ten	3	17	4
		97		Logan Richard . . . . .	f	m f and o	2	17	4
		105	j	Logan Thomas . . . . .	f	m f and o	3	17	4
		106	j	Logan Wm. H . . . . .	f	m f and o	4	17	4
		107	j	Logan Henry . . . . .	f	m f and o	4	16	4
5-7	4	108		Logan George . . . . .	f	m f and o	4	16	4
1-a	4	109		Logan Thos . . . . .	f	m f and f s	4	17	4
15	4	121	j	Lee Edmund . . . . .	f	m f and o	3	13	4
		132		Logan Robert . . . . .	f	m f and o	2	12	4
		134		Logan R. W. . . . .	f	m f and f s	2	12	4
		135		Logan Fred . . . . .		m f and f s	2	12	4
				V					
5	4								
15	4								
15	4	77		McLean Henry, King st . . . .		m f and o		5, 6	4
16	4	60		McKinley John, Main st . . . .		m f and o		5, 4	4
5	4	81	j	McGuffin John S . . . . .	f	m f and o	1	13	4
5	4	82	j	McGuffin Thos . . . . .	f	m f and o	1	14	4
2	4	83	j	McGuffin Wm. C. . . . .	f	m f and o	1	14	4
15	4	85		McGuffin Jas . . . . .	f	m f and o	1	16	4
16	4	86		McGuffin Chas . . . . .	f	m f and f s	1	16	4
15	4	87		McGuffin Fred . . . . .	f	m f and f s	1	16	4
		88		McGuffin Jos . . . . .	f	m f and f s	1	16	4
		93		McGuffin Robert . . . . .	f	m f and o	2	17	4
		94	j	McGuffin Wentworth . . . . .	f	m f and oc	2	17	4
		100		McCutcheon John . . . . .	f	m f and o	3	18	4
		101		McCutcheon Wesley . . . . .	f	m f and f s	3	18	4
16	4	124	j	McCutcheon Alfred . . . . .	f	m f and o	3	11	4
		300	j	McGuffin J. A. . . . .	f	m f and o	1	18	4
		302	j	Mills Edward . . . . .	f	m f and o	2	14	4
				<i>McGuffin Henry</i>		<i>m f o</i>	<i>3.</i>	<i>16</i>	<i>Mc</i>
9	4								
17	4	22		Orr John . . . . .		m f and ten	3	16	4

NO. ON ROLL	JURORS	NAME	OCCUPATION	ADDITIONS	CONCESSION	LOT	POSTOFFICE
122		Orchard John . . . . .	f	m f and o	4	12	4
123		Orchard John . . . . .	f	m f and o	4	12	4
35		Proleyn John, King st. . . .		m f and o		20	4
		Pearson John, Queen st. . . .		m f and o		5, 6	4
13	j	Scott Richard, Har. st . . . .		m f and o		3, 4	4
14	j	Salmon Jas. D., King st . . . .		m f and o		1, 2	4
48		Steele Donald, King st . . . .		m f and o		4	4
54		Salmon Wm. H. King st . . . .		m f and o		1, a	4
66		Stedman Michael, Queen st . .		m f and o		12, 13	4
98	j	Stinson James . . . . .	f	m f and o			4
118	j	Stevenson Robert . . . . .	f	m f and o		13	4
147	j	Scatcherd Wm. B . . . . .	f	m f and o		11	3
148		Scatcherd Thos . . . . .	f	m f and o		2	11
160		Scatcherd Thos. . . . .	f	m f and f s		2	11
161	j	Scatcherd Edwin . . . . .	f	m f and o		2	12
299	j	Spice Wm. . . . .	f	m f and ten		1	18
11		Taite Alexander, Har. st . . . .		m f and ten		6	4
24	j	Tripp Benjamin, King st. . . .		m f and ten		9	4
62	j	Taylor John, Queen st . . . . .		m f and o		8	4
137		Tackaberry N. . . . .		m f and o		3	12
67	j	Vanderburg Irvin, Queen st . .		m f and o		14, 15	4

*W<sub>4</sub> 3 15-6 17/2*

SUB-DIVISION No. 2.

NO. ON ROLL	JURORS	NAME	OCCUPATION	ADDITIONS	CONCESSION	LOT	POSTOFFICE
5	j	Walker Wm., Har. st . . . . .		m f and o		9	4
15		Walker Chas., Har. st . . . . .				1, 2	4
31	j	Whitehead K M., King st ..		m f and o		15	4
34		Walker Joseph, King st . . . .		m f and o		17, 18	4
110		Wright Meade N... . . . . f		m f and o	4	18	4
111	j	Wright Robert . . . . . f		m f and o	4	18	4
112		Wright Wm . . . . . f		m f and f s	4	18	4
130		Wheaton Joseph . . . . . f		m f and o	3	11	4
131	j	Wheaton Jas . . . . . f		m f and o	3	12	4
145		West Robert . . . . . f		m f and o	1	11	3
146	j	West Benjamin . . . . . f		m f and ten	2	11	3
		Wilson John . . . . . f		m f and o	1	13	3
	j	Wilson Geo . . . . . f		m f and o	1	13	3
		Walker Robert . . . . . f		m f and o	2	15	4
		Walker Wm . . . . . f		m f and f s	2	15	4
		Walker Fred . . . . . f		m f and f s	2	15	4

PART II—List of persons entitled to Vote at Municipal Elections only.

295		Ardiel Mrs . . . . .			1	17	4
52		Dunn Susan, King st . . . .				2	4
4		Harrison Mrs Har. st . . . .				8	4
37		Henderson Mary A., King st .				23	4
119		Hart Mrs . . . . .			4	13	4
28		Lovatt Miss, King st . . . .				11	4
		Logan George W . . . . .			3	18	

NO. ON ROLL	JURORS	NAME	OCCUPATION	ADDITIONS	CONCESSION		POSTOFFICE
					CONCESSION N	LOT	
73		McGuffin Mrs., Queen st . . . .				9	4
38		McKenzie Mrs., King st . . . .				25	4
69		Mitchell Mrs., Queen st . . . .				44	4
		<i>W</i> <i>McGeck Mrs.</i>				<i>3. 16</i>	<i>W.L.</i>
26		Ryckman Mrs. King st . . . .				10	4
		Shanley Walter . . . . .				2	18
33		Sinclair Mrs., Queen st . . . .				1, 2	4
34		Stoddart Mrs., King st . . . .				16	
12		Thompson Mrs., Har. st . . . .				5	4
40		Vining Mrs., King st . . . . .				19, 20	4

PART III—List of persons entitled to Vote at Parliamentary Elections only.

170		Beach Francis . . . . .	m f			1	10	3
		<i>W</i> <i>Brown Howard</i>	<i>prof</i>	<i>at mt.</i>				<i>W.L.</i>
		<i>W</i> <i>Baker Charles</i>	<i>prof</i>			<i>4.</i>	<i>15</i>	<i>W.L.</i>
		<i>W</i> <i>Cornell O. S.</i>	<i>mt.</i>					<i>W.L.</i>
76		Cluff W., King st . . . . .	m f			21, 2		4
		<i>W</i> <i>Duncan Henry</i>	<i>prof</i>			1.	<i>18</i>	<i>W.L.</i>
		<i>W</i> <i>Palmer James</i>						<i>W.L.</i>
		<i>W</i> <i>Palmer Fred.</i>	<i>prof</i>	<i>King St.</i>				<i>W.L.</i>
		<i>W</i> <i>Spencer Andrew</i>	<i>mt.</i>					<i>W.L.</i>
144		Jerman Frank . . . . .	m f			2	12	4
		<i>W</i> <i>Holland Frank</i>	<i>prof</i>			<i>3.</i>	<i>18</i>	<i>W.L.</i>

SUB-DIVISION No. 2.

LOT	POSTOFFICE	NO. ON ROLL	JURORS	NAME	OCCUPATION	ADDITIONS	CONCESSION	LOT	POSTOFFICE
9	4	71	W	Logan Wm		m f	3.	13	4
25	4	78		Lankin Samuel, Main st ....		m f		7	4
44	4		W	Lankin George, Main st ....		m f		7	4
16	W.L.			Lee John		m f	2.	17	W.L.
10	4	74		Mitchell Wm., Queen st ...		m f		44	4
		75		McCulloch A. M., King st ...		m f		13	4
		79		Mitchell David.. . . . .		m f	3.	15	4
		80		McMartin Jas, King st .....		m f		5	4
		162		Murray John.. . . . .		m f	1	11	3
18			W	Mitchell Matthew		m f			W.L.
1, 2	4		W	Moque James		m f	2.	15	W.L.
16			W	Wills Andrew		m f			W.L.
		161		Roissier John .....		m f and o	1	12	4
			W	Sherry James		m f	King st.		W.L.
			W	Stacey Thomas		m f	2.	18	W.L.
5	4		W	St. Clair St.		m f			W.L.
		81		Wiseman Thos., Queen st ...		m f		8	4
			W	Sautterworth Robert		m f	4.	15	W.L.
9, 20	4			Taylor Thomas		m f	2.	16	W.L.
10	3								
15	W.L.								
21, 2	4								
18	W.L.								
12	4								
18	W.L.								

tions only.

## Polling Sub-Division No. 3.

From Lots 1 to 10, both inclusive, in Concessions 4, 5, 6 and 7.

## PART I--Persons entitled to vote at both Municipal Elections and Elections to the Legislative Assembly.

NO. ON ROLL	JURORS	NAME	OCCUPATION	ADDITIONS	CONCESSION	LOT	POSTOFFICE
483		Annett Jas.....	f	m f and o	6	10	5
484		Annett Albert.....	f	m f and o	6	10	5
548	j	Baker John.....	f	m f and o	7	10	5
380	j	Bartlett Wm.....	f	m f and ten	5	6	17
385	j	Baskerville George.....	f	m f and o	4	5	17
397		Baskerville Jas.....	f	m f and o	4	5	17
398		Baskerville H.....	f	m f and fs	4	5	17
431	j	Barber Matthew.....	f	m f and o	6	9	5
		Burns John, bailiff.....	f	m f and o	5	9	
451		Brown John.....	f	m f and o	6	6	5
454		Boycé John.....	f	m f and ten	7	6	5
465	j	Broughton Eli.....	f	m f and o	6	3	5
	j	Broughton Wm.....	f	m f and o	7	1	6
544	j	Brock Wm.....	f	m f and o	7	8	6
545	j	Brock Morgan.....	f	m f and o	7	8	6
	j	Brock James.....	f	m f and o	7	8	6
386	j	Crosby Robert.....	f	m f and o	5	5	17
401	j	Clemens Thos.....	f	m f and o	5	3	17
434		Carlen Bernard.....	f	m f and o	6	8	
512		Clipperton Benj.....	f	m f and o	6	2	6
513	j	Cameron Wm.....	f	m f and ten	7	1	6
522		Chamings Joseph.....	f	m f and o	7	3	6

SUB-DIVISION No. 3.

d 7.

Elections

LOT POSTOFFICE  
 10 5  
 10 5  
 10 5  
 6 17  
 5 17  
 5 17  
 5 17  
 9 5  
 9 5  
 6 5  
 6 5  
 3 5  
 1 6  
 8 6  
 8 6  
 8 6  
 5 17  
 3 17  
 8  
 2 6  
 1 6  
 3 6

NO. ON ROLL	JURORS	NAME	OCCUPATION	ADDITIONS	CONCESSION	LOT	POSTOFFICE
523	j	Chamings Wm.....	f	mf and o	7	3	6
		Carlen Peter.....	t	mf and o	5	5	
379	j	Dann Elliot.....	f	mf and o	4	7	17
394		Dunn Edward.....	f	mf and fs	4	7	17
395		Dunn Wm.....	f	mf and fs	4	7	17
396		Dunn Elliott.....	f	mf and fs	4	7	17
441	j	Douglas Wm.....	f	mf and o	6	7	5
525		Dickie David.....	f	mf and o	7	4	6
529	j	Day Alonz.....	f	mf and o	7	6	6
543	j	Day George R.....	f	mf and o	7	6	6
		<i>W Dickie David</i>		<i>mf o</i>	<i>7</i>	<i>4</i>	<i>W</i>
381		Evans Wesley.....	f	mf and o	5	6	4
371		Fallows Joseph.....	f	mf and o	4	10	
384		Fram Jas. B.....	f	mf and o	4	6	17
392	j	Fairweather John.....	f	mf and o	4	9	17
400		Fram Wm.....	f	mf and o	5	3	
515	j	Foster Jas.....	f	mf and o	6	1	6
516	j	Foster Chas.....	f	mf and o	6	1	6
517	j	Futze Jas.....	f	mf and o	7	9	6
		<i>Y</i>					
489		Howay Burgess.....	f	mf and o	7	10	5
373		Higgins Robert.....	f	mf and ten	5	9	17
410		Henderson Wm.....	f	mf and o	5	1	5



NO. ON ROLL	JURORS	NAME.	OCCUPATION	ADDITIONS	CONCESSION	LOT	POSTOFFICE
422	j	Henderson Matthew....	f	m f and o	6	4	5
445		Henshaw John.....	f	m f and o	6	6	5
446	j	Henshaw Edward.....	f	m f and o	6	6	5
447		Henshaw George....	f	m f and o	6	6	5
531	j	Henshaw George.....	f	m f and o	7	9	6
532	j	Henshaw Jas.....	f	m f and o	6	9	6
538		Hobday John.....	f	m f and o	7	7	6
546		Henshaw John.....	f	m f and o	7	9	6
547		Henshaw Daniel.....	f	m f and o	7	9	5
540		Jeffrey John.....	f	m f and o	7	7	6
542		Jeffrey John.....	f	m f and fs	7	7	6
448		Kernohan Arthur.....	f	m f and o	6	<del>6</del> 7	5
459		Lackie Alex.....	f	m f and ten	7	4	5
		Lee John.....	f	m f and o	7	4	
464		Lackie John.....	f	m f and o	7	3	5
524	j	Lackie Alex.....	f	m f and o	7	3	6
525	j	Lackie Jas.....	f	m f and o	7	3	6
420	j	McWilliams Dr.....	f	m f and o	5	2	6
366	j	Mahon Jas. H.....	f	m f and ten	6	3	5
369		Mahon Jas.....	f	m f and o	4	10	17
369		Mahon Wm.....	f	m f and o	5	10	17
372		Mullet Chas.....	f	m f and ten	5	9	17

SUB-DIVISION No. 3.

LOT	POSTOFFICE	NO. ON ROLL	JURORS	NAME	OCCUPATION	ADDITIONS	CONCESSION	LOT	POSTOFFICE
4	5	378	j	McFarlan John.....	f	m f and o	5	7	17
6	5	403	j	McConnell Thos .....	f	m f and o	5	2	17
6	5	417	j	Moore Wm.. .. .	f	m f and ten	5	1	6
6	5	418	j	Moore Wm., jr.....	f	m f and ten	5	1	6
9	6	426	j	McMartin Alex.....	f	m f and o	6	5	5
9	6	427		McMartin Jas.....	f	m f and f s	6	5	5
7	6	428		McMartin A. C.....	f	m f and f s	6	5	5
9	6	436		Mahon George.....	f	m f and o	5	7	5
9	5			Mahon Joseph.....	f	m f and o	5	7	5
		439		Mahon Wm.....	f	m f and o	5	10	5
		440		Mahon Joseph.....	f	m f and o	5	10	5
		457	j	McMartin Wm.....	f	m f and o	6	5	5
		458	j	McMartin Wm., jr.....	f	m f and o	7	5	5
7	6	466		McMartin John.....	f	m f and f s	6	5	5
7	6	467		Morrison Matthew.....	f	m f and o	7	2	6
		468		Morrison John.....	f	m f and f s	7	1	6
		469		Morrison Arthur.....	f	m f and f s	7	1	6
		470		Morrison David.....	f	m f and f s	7	1	6
		471		Morrison John.....	f	m f and f s	7	1	6
			j	Murrill John.....	f	m f and o	6	10	7
	5		W	<i>Mahon George</i>		<i>WFO</i>	6.	10	<i>W.L.</i>
			W	<i>Mahon Henry</i>		<i>J.S.</i>	6.	10	<i>W.L.</i>
			j	Nox Alexander.....	f	m f and o	7	8	6
4	5								
4									
3	5								
3	6								
3	6								
		389	j	Pardy Humphrey.....	f	m f and o	4	4	17
		423	j	Pardy Samuel.....	f	m f and o	5	3	5
		533	j	Parsons Wm.....	f	m f and o	7	8	6
2	6								
3	5								
10	17								
10	17	461	j	Quiet Wm. A.....	f	m f and o	6	4	5
9	17	462	j	Quiet John.....	f	m f and o	6	4	5

## SUB-DIVISION No. 3.

NO. ON ROLL	JURORS	NAME	OCCUPATION	ADDITIONS	CONCESSION	LOT	POSTOFFICE
463	j	Quiet Wm.....	f	m f and o	6	4	5
539	j	Quiet Richard..	f	m f and o	6	7	6
540	j	Quiet Fred.....	f	m f and o	6	7	6
535		Routledge Robert.....	f	m f and o	7	8	6
399	j	Smith Wm.....	f	m f and ten	5	3	6
421		Slater John.....	f	m f and o	6	3	
442		Shannon Wm..	f	m f and ten	6	6	5
443	j	Shannon Wm. Jr..	f	m f and ten	6	6	5
452	j	Simpson Thos..	f	m f and ten	7	6	5
373		Tomlinson Jas.....	f	m f and o	7	2	6
374	j	Taylor John..	f	m f and o	5	8	17
424		Taylor John .....	f	m f and o	5	3, 4	4
428	j	Taylor Wm. H.....	f	m f and o	5	8	5
517		Taylor Samuel .....	f	m f and o	7	1	6
518		Tomlinson Jas.....	f	m f and o	7	1	6
		Tomlinson Isaac .....	f	m f and o	7	1	6
519		Tomlinson Harry .....	f	m f and o	7	1	6
		Wills Henry .....	f	m f and o	4	2	6
375		Woods Robert.....	f	m f and o	4	8	17
376		Woods Robert .....	f	m f and f s	4	8	17
377		Woods Isaac.....	f	m f and f s	4	8	17

SUB-DIVISION No. 3.

LOT POSTOFFICE  
 4 5  
 7 6  
 7 6  
 8 6  
 3 6  
 3 5  
 6 5  
 6 5  
 2 6  
 8 17  
 3, 4 4  
 8 5  
 1 6  
 1 6  
 1 6  
 2 6  
 8 17  
 8 17  
 8 17

NO. ON ROLL	JURORS	NAME	OCCUPATION	ADDITIONS	CONCESSION	LOT	POSTOFFICE
383	j	Woods Allen .....	f	m f and o	5	4	6
387		Weston Jas .....	f	m f and o	4	3	6
390	j	Weston Jas. ....	f	m f and ten	5	5	5
391		Weston Wm .....	f	m f and o	4	3	6
406		Wills' Jas .....	f	m f and o	4	2	6
407	j	Wyatt Chas .....	f	m f and o	4	2	5
412		Wilkinson Geo. ....	f	m f and o	6	1	5
413		Wilkinson Wm .....	f	m f and f s	6	1	5
		Wilkinson John .....	f	m f and f s	6	1	5
536	j	Weston John .....	f	m f and ten	6	8	5

PART II—List of persons entitled to Vote at Municipal Elections only.

416	<i>W</i>	<i>Brock Margaret</i> Clipperton Ann .....			7.	8	<i>Wk</i>
	<i>W</i>	<i>Brock Jane</i>			7.	8	<i>Wk</i>
527		Fallows Mrs .....			7	5	5
453		Lackie Mrs .....			7	6	5

PART III—List of persons entitled to Vote at Parliamentary Elections only.

		Armstrong Benjamin .....	m f		5	8	17
	<i>W</i>	<i>Alexander John</i>			4.	2	<i>Wk.</i>
382		Bartlett Albert .....	f	m f	5	6	17
411		Clipperton Joseph .....	t	m f	5	1	5
415		Clipperton Eli .....	f	m f	5	1	5

NO. ON ROLL	JURORS	NAME	OCCUPATION	ADDITIONS	CONCESSION	LOT	POSTOFFICE
425		Gee Fred.....f	f	m f	5	4	5
		<i>W Healy Edward</i>		<i>m f</i>	<i>5.</i>	<i>8</i>	<i>Wk</i>
430		Jackson George.....f	f	m f	6	5	5
432		McGuiness Colin .....f	f	m f	6	9	5
		<i>W Murphy Robert</i>		<i>m f</i>	<i>4.</i>	<i>10</i>	<i>Wk</i>
450		O'Bryan Jas .....f	f	m f	6	6	5
405		Rumble Wm .....f	f	m f	5	1	6
550		Walters Albert. ....f	f	m f	7	10	5

*Walters Albert. ....f m f 7 10 5*

**Polling Sub-Division No. 4.**

Comprising the East half of Concession 4, the 5th, 6th and 7th Concessions, from Lot 11 to 18, both inclusive.

PART I—Persons entitled to vote at both Municipal Elections and Elections to the Legislative Assembly.

LOT POSTOFFICE  
4 5  
*8 W.L.*  
5 5  
9 5  
*10 W.L.*  
6 5  
1 6  
10 5

NO. ON ROLL	JURORS	NAME	OCCUPATION	ADDITIONS	CONCESSION	LOT	POSTOFFICE
306	j	Aikin Wm .....	f	m f and o	7	16	7
307	j	Aikin Geo. ....	f	m f and o	7	16	7
325	j	Aikin David.....	f	m f and o	5	18	4
326		Aikin Robert.....	f	m f and f s	5	18	4
327		Aikin Chas.....	f	m f and f s	5	18	4

473 j Barter John..... f m f and ten *W* 6 ~~15-6~~ 4 *W.L.*  
 474 Blackwell George..... f m f and ten 4 17 4  
*W* *Braver Chas m f ten 5-17- W.L.*

331	j	Carrothers Wm .....	f	m f and o	5	18	4
332	j	Carrothers Wm.....	f	m f and f s	5	18	4

337 j Dundass Jas..... f m f and o 5 16 4  
 346 j Davis Hugh..... f m f and o 5 14 4  
 347 Davis John..... f m f and o 5 14 4  
 352 j Duffin Jos..... f m f and o 4 13 4  
 477 j Dunkin John..... f m f and o 5 13 4  
*W* *Duncan James J.S. 5-13- W.L.*

NO. ON ROLL	JURORS	NAME	OCCUPATION	ADDITIONS	CONCESSION	LOT	POSTOFFICE
323	j	Freel Wm.....	f	m f and o	6	18	4
324		Freel Morgan.....	f	m f and o	6	18	4
335	j	Fitzgerald Edward.....	f	m f and o	4	17	4
336		Fitzgerald W. C. ....	f	m f and o	4	17	4
342		Fitzsimmons Henry ..	f	m f and o	5	15	4
343		Fitzsimmons Allen. ....	f	m f and f s	5	15	4
344		Fitzsimmons Walter.....	f	m f and f s	5	15	4
528		Fallows Howard . . . . .	f	m f and o	7	12	5
317		Garner Robt. ....	f	m f and o	5	17	4
481		Goarly John . . . . .	f	m f and ten	6	11	5
321	j	Houlton John.....	f	m f and ten	5	18	4
350		Hart Jas.....	f	m f and ten	4	13	4
351		Hart Jas.....	f	m f and ten	4	13	4
		Hopkins Elias.....	f	m f and ten	5	11	4
489		Harris Thos.....	f	m f and o	6	11	2
491	j	Hueston Wm.....	f	m f and o	6	15	4
		<i>Hill James m f ten</i>			6	14	102
509	j	Johnston John.....	f	m f and o	7	15	7
510		Johnston Alonzo.....	f	m f and f s	7	15	7
333	j	Kessel Wm.....	f	m f and o	4	18	4

POSTOFFICE  
LOT  
18 4  
18 4  
17 4  
17 4  
15 4  
15 4  
15 4  
12 5  
  
17 4  
11 5

NO. ON ROLL	JURORS	NAME	OCCUPATION	ADDITIONS	CONCESSION	LOT	POSTOFFICE
328	j	Lee Richard	f	mf and o	4	18	4
329		Lee Walter	f	mf and fs	4	18	4
330		Lee Bert	f	mf and fs	4	18	4
349	j	Lee Chas	f	mf and fs	4	13-18	4
353		Lee Wm	f	mf and o	5	12-13	4
354		Lee Fred	f	mf and fs	5	12-13	4
359		Lee Wm	f	mf and fs	5	12-13	4
360		Lee Albert	f	mf and fs	5	12-13	4
361	j	Logan Richard	f	mf and ten	4	12	4
362	j	Logan Chas	f	mf and ten	4	12	4
499		Logan Robert	f	mf and o	4	12	
500		Laird Jas	f	mf and o	6	12	7
501	j	Laird John	f	mf and o	6	12	7

18 4  
13 4  
13 4  
11 4  
11 2  
15 4  
  
15 7  
15 7

		<i>W. Murphy Edson m f ten.</i>			7.	13	<i>W.L.</i>
310	j	Mitchell Wm	f	mf and o	7	18	7
313	j	Murphy Jas	f	mf and ten	7	13	7
312	j	Mitchell Michael	f	mf and o	6	16	7
322		McDonald Hugh	f	mf and o	7	17	7
355		McQuain Henry	f	mf and o	5	18	
365		McKone Jas	f	mf and ten	4	11	17
	j	McMurray Wm	f	mf and o	5	11	17
482	j	Mahon Wm	f	mf and o	6	11	15
483		Mahon George	f	mf and o	6	10	17
551	j	Murrell Richard	f	mf and o	6	15	7
493	j	Murrell Henry	f	mf and o	7	11	7
494	j	Murrell Wm	f	mf and o	7	14	7
495	j	Murrell Robert	f	mf and o	7	13	7 <i>W.L.</i>
496	j	Murrell Albert	f	mf and o	6	13	7
497		Murrell James	f	mf and o	7	14	7
505		Morrison Chas P	f	mf and o	7	12	5 <i>W.L.</i>
		<i>W. McMurray Wm f.s.</i>			5.	11	<i>W.L.</i>
		<i>W. Murrell Arthur f.s.</i>			6.	15	<i>W.L.</i>
339	j	Nicholson Edward	f	mf and o	5	16	4

18 4

*W. Murrell Arthur*



NO. ON ROLL	JURORS	NAME	OCCUPATION	ADDITIONS	CONCESSION	LOT	POSTOFFICE
502		Patterson Samuel.....f		m f and o	7	13	7 <i>ML</i>
	<i>W</i>	<i>Patterson Chas.</i>		<i>m f o</i>			<i>7.13 ML</i>
316		Ramsay John .....	f	m f and o	6	17	4
317	j	Ramsay Walter .....	f	m f and o	6	17	4
318		Ramsay Jas... ..	f	m f and f s	6	17 18	4
319		Ramsay H. K. ....	f	m f and f s	6	18	4
320	j	Ramsay John.....	f	m f and o	6	18	4
		Salmon Jas .....	f	m f and o	4	11	4
478		Scott Harvey.....	f	m f and o	6	12	4
479	j	Scott Alfred.....	f	m f and o	6	12	4
504		Smith Albert G.....	f	m f and ten	7	12	7
507		Stainton Jas.....	f	m f and o	7	14	7
508	j	Stainton Wm .....	f	m f and o	7	14	7
		Thompson Jas .....	f	m f and o	6	17	7
311	j	Thompson Robert.....	f	m f and ten	7	11	7
511		Taylor Alfred.....	f	m f and o	6	16	7
		Vining John P.....	f	m f and o	6	14	4
476	j	Vanderburg Terin.....	f	m f and o	5	14-15	4
341	j	Vining Carey.....	f	m f and o	5	15	4
348	j	Vining Salmon.....	f	m f and o	5	15	4
471		Vining Ebenezer.....	f	m f and o	5	16	4
472	j	Vining Joseph A.....	f	m f and o	5	14	4
475	j	Vining Josiah.....	f	m f and o	6	16	4
	<i>W</i>	<i>Vining Arthur</i>		<i>f. s.</i>			<i>5.15 ML</i>

SUB-DIVISION No. 4.

LOT POSTOFFICE  
 13 7 ML  
 13 ML  
 17 4  
 17 4  
 17 18 4  
 18 4  
 18 4

NO. ON ROLL	JURORS	NAME	OCCUPATION	ADDITIONS	CONCESSION	LOT	POSTOFFICE
308	j	Woods Wm . . . . .	f	m f and o	7	17	7
309	j	Wilkie John . . . . .	f	m f and o	7	18	7 ML
314-15		Weir & Weir . . . . .	f	m f and ten	5	17	4 ML
340	j	Williamson Wm . . . . .	f	m f and ten	4-5	14-15	4 ML
		Walker Chas . . . . .	f	m f and o	4	11	4
363	j	Weston Chas . . . . .	f	m f and ten	4	11	4
400		Walters Thos . . . . .	f	m f and ten	6	11	7
491		Walters Samuel . . . . .	f	m f and ten	6	11	7

PART II—List of persons entitled to Vote at Municipal Elections only.

11 4  
 12 4  
 12 4  
 12 7  
 14 7  
 14 7

		Day Solomon . . . . .			7	12	
338		Logan Rachel . . . . .			4	16	4
480		Scott Wesley . . . . .	f m f		6	13	4
		<i>Waring Joseph</i>			6	15	

PART III—List of persons entitled to Vote at Parliamentary Elections only.

17 7  
 11 7  
 16 7

345		Aldershaw Henry . . . . .		m f	5	15	4
501		Armstrong Henderson . . . . .		m f	6	10	7
334		Houlton Arthur . . . . .		m f	5	18	4

14 4  
 14-15 4 ML  
 15 4 ML  
 15 4  
 16 4  
 14 4  
 16

### Polling Sub-Division No. 5.

Comprising Concessions 1 and 2 West of River Thames from Lots 19 to 36, both inclusive.

PART I—Persons entitled to vote at both Municipal Elections and Elections to the Legislative Assembly.

NO. ON ROLL	JURORS	NAME	OCCUPATION	ADDITIONS	CONCESSION	LOT	POSTOFFICE
665		Amos Wm. . . . .	f	m f and o	2	35	9
664		Bradshaw James . . . . .	f	m f and o	2	35	9
683		Bryce Jas. . . . .	f	m f and o	2	33	9
698	j	Beck Jos. . . . .	f	m f and o	1	22	4
699	j	Beck Hugh . . . . .	f	m f and o	1	22	4
700	j	Beck Jas. . . . .	f	m f and o	1	22	4
701	j	Beck Thos. . . . .	f	m f and o	1	22-3	4
702		Beck Wm. . . . .	f	m f and o	1	22	4
707		Buins John . . . . .	f	m f and o	1	24	16
708		Beck Hugh . . . . .	f	m f and o	1	22	4
732	j	Paker Henry . . . . .	f	m f and o	1	31	9
681	j	Dawson Wm. . . . .	f	m f and o	1	33	9
722	j	Dunn Roger . . . . .	f	m f and o	2	26	16
723	j	Dunn Edward . . . . .	f	m f and o	2	26	16
731	j	Dixon Walter . . . . .	f	m f and o	1	31	9
733		Dixon James . . . . .	f	m f and o	1	34	9
712		Elliott John . . . . .	f	m f and o	1	27	16

SUB-DIVISION No. 5.

29

19 to 36,

d Elections

NO. ON ROLL	JURORS	NAME	OCCUPATION	ADDITIONS	CONCESSION	LOT	POSTOFFICE
713	j	Elliott John jr. ....	f	m f and o	1	27	16
714	j	Elliot Robert.....	f	m f and o	1	27	16
		Faircloth Frank.....	f	m f and ten	2	24	16
734	j	Fitzgerald Chas.....	f	m f and o	1	33	9
735	j	Fitzgerald Fred.....	f	m f and o	1	35	9
736	j	Fitzgerald Alfred .....	f	m f and o	1	35	9
737	j	Fitzgerald Fred.....	f	m f and o	1	32	9
	j	Fleming Edward.....	f	m f and ten	1	26	16
	j	Fisher Alexander .....	f	m f and o	2	29	16
685		Grose Chas .....	f	m f and o	1	32	9
686		Grose Chas. E.....	f	m f and fs	1	32	9
687		Grose Thos. ....	f	m f and fs	1	32	9
688	j	Grose John. ....	f	m f and ten	2	32	9
717		Gough John.....	f	m f and o	1	27	16
718	j	Gough Wm .....	f	m f and o	1	26	16
719		Gough Wm .....	f	m f and o	1	27	16
		Griffith Jacob .....	f	m f and ten	2	26	16
750	j	Guest Henry .....	f	m f and o	1	23	16
751	j	Guest E. B .....	f	m f and o	1	2100	16
671		Hobbs Edward .....	f	m f and o	1	34	9
680	j	Hartwick John.....	f	m f and o	2	33	9
682	j	Hardy George.....	f	m f and o	2	33	9
684	j	Hardy David. ....	f	m f and o	2	31-2	9
693	j	Hudson Henry .....	f	m f and o	2	31	9
721		Hudson Henry .....	f	m f and o	2	26	16

LOT POSTOFFICE  
35 9

35 9  
33 9  
22 4  
22 4  
22 4  
22 4  
22 3 4  
22 4  
24 16  
22 4  
31 9

33 9  
26 16  
26 16  
31 9  
34 9

27 16

42

1/4  
10-2

NO. ON ROLL	JURORS	NAME	OCCUPATION	ADDITIONS	CONCESSION	LOT	POSTOFFICE
722	j	Hudson Chas. B. ....	f	m f and o	2	27	16
723		Hudson Henry ..	f	m f and o	2	27	16
743	j	Hardy Chas. ....	f	m f and o	1	27	16
727		Hardy Alexander ..	f	m f and o	1	29	16
728	j	Hardy Wm. ....	f	m f and o	1	36	16
		(					
748	j	Johnston Edmund ..	f	m f and ten	1	25	16
715		Jones Richard ..	f	m f and ten	1	26	16
716	j	Jones John ..	f	m f and ten	1	26	16
717	j	Jones Wm. ....	f	m f and ten	1	27	16
744	j	James James ..	f	m f and o	1	26	16
		√					
689		Lang James ..	f	m f and o	2	32	9
679		Moore Jas. ....	f	m f and o	2	34	9
696		McGuffin Dorastus ..	f	m f and o	1	20	16
697	j	McGuffin Robert ..	f	m f and o	1	20	16
709		McVey Jas. ....	f	m f and o	1	25	16
710		McVey Robert ..	f	m f and f s	1	25	16
711		McVey Jas. ....	f	m f and f s	1	25	16
726	j	McGuffin Wm. ....	f	m f and ten	1	19-20	16
752	j	McGuffin Wilber ..	f	m f and ten	1	19-20	16
753		McGuffin Jos. ....	f	m f and o	1	19-20	16
729	j	Moss Wm. ....	f	m f and o	2	28	9
		W McVey Wm		Mf. o.	2	25	16
		Powell Leonard ..	f	m f and o	2	36	9
	j	Powell A. ....	f	m f and o	2	36	9

SUB-DIVISION No. 5.

LOT POSTOFFICE  
 27 16  
 27 16  
 27 16  
 29 16  
 36 16

25 16  
 26 16  
 26 16  
 27 16  
 26 16

32 9

34 9  
 20 16  
 20 16  
 25 16  
 25 16  
 25 16  
 19-20 16  
 19-20 16  
 19-20 16  
 28 9

25 *ML*

36 9  
 36 9

NO. ON ROLL	JUKORS	NAME	OCCUPATION	ADDITIONS	CONCESSION	LOT	POSTOFFICE
		Perrin Joseph..... f		m f and o	1	36	9
	j	Pearn Chas..... f		m f and o	1	26	9
		√					
672	j	Riddel Robert . . . . . f		m f and o	2	35	9
673	j	Riddel Alexander . . . . . f		m f and o	2	35	9
674	j	Riddel Samuel . . . . . f		m f and o	2	35	9
676	j	Riddel Sidney . . . . . f		m f and o	1	35	9
677		Riddel Frank . . . . . f		m f and o	2	34	9
678	j	Robson John . . . . . f		m f and ten	2	34	9
691		Risdon John . . . . . f		m f and o	2	31	9
694		Rathbun Ezra . . . . . f		m f and o	1	19	4
704	j	Riley Benjamin . . . . . f		m f and o	1	24	16
705		Riley Jas . . . . . f		m f and f s	1	24	16
706		Riley John . . . . . f		m f and f s	1	24	16
		√					
748	j	Salmon John W . . . . . f		m f and o	1	23	16
749	j	Salmon Chas . . . . . f		m f and o	1	21	9
730		Smibert George . . . . . f		m f and o	2	30	9
695	j	Shoebottom John . . . . . f		m f and o	1	25	9
		√					
	j	Thompson Robert . . . . . f		m f and o	1	29	9
		√					
	j	Weir Wm . . . . . f		m f and o	1	30	9
		Weir Benjamin . . . . . f		m f and o	1	30	9
693	j	Westman Richard . . . . . f		m f and o	2	30	9

67

NO. ON ROLL	JURORS	NAME	OCCUPATION	ADDITIONS	CONCESSION	LOT	POSTOFFICE
692	j	Westman Weldron . . . . .	f	m f and ten	2	31	9
670		Wright J. A. . . . .	f	m f and o	1	36	9
	j	Weir Joseph . . . . .	f	m f and o	1	28	9

690 j Young Wm. . . . . f m f and o 1 31 9

PART II—List of persons entitled to Vote at Municipal Elections only.

Thompson Mrs. . . . . . 1 29 9

Riddel Mrs. . . . . . 1 35 9

Hartwick Mrs. . . . . . 1 34 9

PART III—List of persons entitled to Vote at Parliamentary Elections only.

W 729 *Brown James* *W* *1. 28* *W*  
Henry Wm. . . . . m f 1 31 16

720 James Frank . . . . . m f 2 25 16

728 Paul George . . . . . m f 1 31 16

W *Silk Trust* *W* *1. 28* *W*

**Polling Sub-Division No. 6.**

Comprising all that portion of the 2nd Concession East of the River Thames, the 3rd Concession, and West half of Concession 4, from Lots 19 to 36, both inclusive.

**PART I—Persons entitled to vote at both Municipal Elections and Elections to the Legislative Assembly.**

LOT	POSTOFFICE	NO. ON ROLL	JURORS	NAME	OCCUPATION	ADDITIONS	CONCESSION	LOT	POSTOFFICE
31	9								
36	9								
28	9								
31	9								
ns only.		594	j	Brown John .....	f	m f and o	3	27	8
		596	j	Brock Henry.....	f	m f and o	2	26	8
		599		Brown Jas.....	f	m f and o	3	27	8
29	9	601		Brock Emanuel.....	f	m f and o	3	25	8
		602		Brock John.....	f	m f and f s	3	25	8
		603		Brock Clarence.....	f	m f and f s	3	25	8
		620	j	Bowers John.....	f	m f and o	4	27	8
		645	j	Bridgman Robt.....	f	m f and ten	4	32	10
35	9	649	j	Brown Jas.....	f	m f and o	3	32	10
		663	j	Bearrs Lemuel..	f	m f and o	3	34	10
34	9								
lections only.		627	j	Chalmers David .....	f	m f and o	3	28-9	10
		660	j	Crandon W. J .....	f	m f and o	3	36	10
28	16	661	j	Crandon Jos. ....	f	m f and o	3	36	10
31	16			<i>W Cameron John</i>		<i>imp o</i>	3	<i>32</i>	<i>10</i>
25	16	584	j	Dunbar Wm.....	f	m f and o	4	25	8
		610	j	Dufton Alfred.....	f	m f and o	2-3	22	8
31	16								
			j	Edwards John.....	f	m f and o	2	19	4



NO. ON ROLL	JURORS	NAME	OCCUPATION	ADDITIONS	CONCESSION	LOT	POSTOFFICE
	j	Evans Courcey.....	f	m f and o	3	21	4
		Elliott Jas.....	f	m f and o	4	26	8
	j	Evans W. J.....	f	m f and ten	4	31	10
	j	Easterbrook Jas.....	f	m f and ten	3	32	10
		Easterbrook John.....	f	m f and o	3	32	10
585		Fitzgerald George.....	f	m f and o	3	25	8
586	j	Fitzgerald Edward.....	f	m f and o	3	25	8
614	j	Fox William.....	t	m f and o	3	21	4
565	j	Gillis Jas.....	f	m f and o	3	20	4
566		Garner Robert.....	f	m f and oc	4	20	4
567	j	Garner Thomas.....	f	m f and oc	4	20	4
568		Garner Robt. sr.....	f	m f and o	4	20	4
580	j	Gumb Jas.....	f	m f and o	4	23	8
629		Gibson Robert.....	f	m f and ten	3	30	10
630	j	Gibson J. M.....	f	m f and ten	3	30	10
640		Gillis John.....	f	m f and o	3	31	10
653	j	Gumb John.....	f	m f and o	4	33	10
654		Gumb Thos.....	f	m f and o	4	34	10
655		Gumb Thos.....	f	m f and o	4	34	10
533		Hobbs Robert.....	f	m f and o	3	19	4
534	j	Hobbs Robt., jr.....	f	m f and o	3	19	4
570	j	Hobbs Wilson.....	f	m f and o	4	21	8
595		Hobbs Richard.....	f	m f and o	3	26	8
597		Hobbs Alfred.....	f	m f and f s	3	26	8
598		Hobbs Jas.....	f	m f and f s	3	26	8
613		Hobbs John.....	f	m f and o	3	26	8

SUB-DIVISION No. 6.

35

LOT	POSTOFFICE	NO. ON ROLL	JURORS	NAME	OCCUPATION	ADDITIONS	CONCESSION	LOT	POSTOFFICE
21	4	615		Hobbs Wesley.. . . . .	f	m f and f s	3	26	8
26	8	650		Hobbs Edward.. . . . .	f	m f and o	3	33	10
31	10	651	j	Hobbs George.. . . . .	f	m f and o	3	33	10
32	10	666	j	Hislop Philip.. . . . .	f	m f and o	4	36	10
25	8	582	j	Keast George W.. . . . .	f	m f and o	4	24	8
25	8	583	j	Keast Lee.. . . . .	f	m f and o	4	24	8
21	4	617	j	Kennedy Jas.. . . . .	f	m f and ten	3	27	8
		656	j	Kingdom Wm.. . . . .	f	m f and o	3	34	10
20	4	571	j	Logan Frank.. . . . .	f	m f and o	3	21	4
20	4	573		Logan Richard.. . . . .	f	m f and o	4	21	4
20	4	652	j	Lindsay George.. . . . .	f	m f and o	3	33	10
20	4	662	j	Legge Wm.. . . . .	f	m f and o	3	34	10
23	8								
30	10								
30	10								
31	10								
33	10								
34	10	568	j	McCutcheon Wm.. . . . .	f	m f and o	3	20	4
34	10	569	j	McCutcheon Frank.. . . . .	f	m f and oc	3	19	4
		577	j	Moore Wm.. . . . .	f	m f and o	3	22	8
		578	j	Moore S. B.. . . . .	f	m f and o	3	22	8
		589		Moore Samuel.. . . . .	f	m f and o	3	24	8
		590	j	Moore Joshua.. . . . .	f	m f and o	3	24	8
		592		McKinnon Daniel.. . . . .	f	m f and o	4	25	8
19	4	608		Mossop Jonathan.. . . . .	f	m f and o	2	23 <del>04</del>	8
19	4	609	j	Mossop Joseph.. . . . .	f	m f and o	2	23 <del>04</del>	8
21	8	623		McFarlane Daniel.. . . . .	f	m f and o	3	28	8
26	8	624	j	McFarlane George.. . . . .	f	m f and o	3	28	8
26	8	630		Magee Alfred.. . . . .	f	m f and o	3	30	10
26	8	639		Maguinness James.. . . . .	f	m f and o	3	31	10
26	8	642		Mason Wm.. . . . .	f	m f and o	4	31	10

69

*Handwritten notes:*  
 8W  
 8W  
 8W  
 8W

NO. ON ROLL	JURORS	NAME	OCCUPATION	ADDITIONS	CONCESSION	LOT	POSTOFFICE
643		Mason Wm.....	f	m f and o	4	32	10
569		McCutcheon Henry .....	f	m f and o	4	19	
623		Near Jacob. ....	f	m f and o	4	29	10
624	j	Near Wm.....	f	m f and o	4	29	10
625	j	Near John.....	f	m f and o	4	29	10
657	j	Nagle Thomas .....	f	m f and o	4	35	10
560	j	Palmer David .....	f	m f and ten	2	21	4
591		Powell Henry .....	f	m f and o	3	25	8
645	j	Porter Robert .....	f	m f and ten	4	32	10
658		Parker Thos.....	f	m f and o	3	35	10
659	j	Parker Thos., jr.....	f	m f and o	3	35	10
556		Shanley Chas.....	f	m f and o	2	19	
557		Scott Richard.....	f	m f and o	3	20	4
558		Scott James.....	f	m f and o	3	20	4
611	j	Sugdun Thos.....	f	m f and o	2	21	4
612	j	Sugdun Robert.....	f	m f and o	2	22	4
604	j	Switzer Charles.....	f	m f and o	2	24	8
619		Sinclair Moses.....	f	m f and o	4	27	8
620	j	Sinclair Moses, jr.....	f	m f and o	4	27	8
632		Smith Peter.....	f	m f and o	3	31	10
633	j	Smith Daniel.....	f	m f and o	4	31	10
634	j	Smith James .....	f	m f and o	3	31	10
636		Smibert Geo. W.....	f	m f and o	4	30	
635		Sager Charles. ....	f	m f and o	3	31	10
641		Sager Thomas.....	f	m f and o	3	31	10

LOT  
 32 10  
 19  
  
 29 10  
 29 10  
 29 10  
 35 10

NO. ON ROLL	JURORS	NAME	OCCUPATION	ADDITIONS	CONCESSION	LOT	POSTOFFICE
593	j	Tims John.....	f	m f and o	3	27	8
618		Uren Joseph.....	f	m t and o	3	27	8
621		Uren James.....	f	m f and o	3	28-9	8
622	j	Uren Gratton.....	f	m f and o	3	28-9	8
572		Weir & Weir.....	f	m f and ten	4	21	
576	j	Webb John.....	f	m f and o	4	22	8
579	j	Wiggelsworth Wm.....	f	m f and o	3	23	8
580	j	Wiggelsworth Robert...	f	m f and o	3	23	8
605		Waugh Thomas.....	f	m f and o	3	23	8
606		Waugh Chas.....	f	m f and f s	3	24	8
607		Waugh John.....	f	m f and f s	3	24	8
631		Welsh Patrick.....	f	m f and o	3	30	10
		<i>W Waugh Wm</i>		<i>mf o</i>	<i>3.</i>	<i>24</i>	<i>10</i>

21 4  
 25 8  
 32 10  
 35 10  
 35 10  
  
 19  
 20 4  
 20 4  
 21 4  
 22 4  
 24 8  
 27 8  
 27 8  
 31 10  
 31 10  
 31 10  
 30  
 31 10  
 31 10

PART II—List of persons entitled to Vote at Municipal Elections only.

Moland Mrs.....	2	25	8
Hannaberry Mrs.....	4	28	10
Stoddart Mrs.....	2	20	4
Stoddart Thomas.....	2	20	
Stoddart Chas.....	2	20	
Stoddart Agnes.....	2	21	

*W Sagar James*      *3. 22 W.L.*

### Polling Sub-Division No. 7.

Comprising East half of Concession 4, the 5th, 6th and 7th Concessions, from Lots 19 to 27, both inclusive.

PART I—Persons entitled to vote at both Municipal Elections and Elections to the Legislative Assembly.

NO. ON ROLL	JURORS	NAME	OCCUPATION	ADDITIONS	CONCESSION	LOT	POSTOFFICE
774		Aikin Daniel . . . . .	f	m f and o	7	19	7
788	j	Annett James . . . . .	f	m f and ten	5	23	12
800		Aikin David . . . . .	f	m f and o	5	19	4
801		Aikin Robert . . . . .	f	m f and f s	5	19	4
802		Aikin Chas. W. . . . .	f	m f and f s	5	19	4
764	j	Brown John . . . . .	f	m f and ten	7	21	13
765	j	Brown Fred . . . . .	f	m f and ten	7	21	13
766	j	Brown John . . . . .	f	m f and ten	6	19	13
783	j	Burgess Wm . . . . .	f	m f and b	5	22	12
784	j	Burgess John . . . . .	f	m f and o	5	22	12
796	j	Burgess Frank . . . . .	f	m f and o	5	22	12
838	j	Bradshaw Thomas . . . . .	f	m f and o	5	24	12
781	j	Conn James . . . . .	f	m f and o	5	21	12 W
782		Conn Robert . . . . .	f	m f and o	5	21	
808		Conn James . . . . .	f	m f and o	5	21	12
940		Cook Chas . . . . .	f	m f and o	6	26	12
835	j	Davis John . . . . .	f	m f and o	6	22	12

SUB-DIVISION No. 7.

39

Concessions,

d Elections

NO. ON ROLL	JURORS	NAME	OCCUPATION	ADDITIONS	CONCESSION	LOT	POSTOFFICE
837		Davis Hugh.....f		m f and o	6	22	12
755		Davis James A.....f		m f and o	7	19	13
756		Davis Lewis.....f		m f and f s	7	19	13
757		Davis Elijah.....f		m f and f s	7	19	13
758		Davis Walter.....f		m f and f s	7	19	13
785	j	Davis Robert.....f		m f and o	6	22	12
786	j	Davis Peter.....f		m f and o	6	22	12
787	j	Davis Hugh.....f		m f and o	6	22	12
759	j	Elgie Philip.....f		m f and oc	7	20	13
760	j	Elgie Peter.....f		m f and o	7	20	13
762	j	Elgie Thomas.....f		m f and o	7	21	13
763	j	Elgie John.....f		m f and o	7	21	13
769		Eaton John.....f		m f and o	7	21	13
815		Elgie James.....f		m f and o	7	24	13
818	j	Elgie Wm.....f		m f and o	7	25	12
819		Elgie Wm., jr.....f		m f and o	7	25	12
767	j	Faircloth Thomas.....f		m f and ten	7	21	13
768		Faircloth Wm.....f		m f and o	7	21	13
775		Freel Wm.....f		m f and o	5	19	4
809		Fairall Henry.....f		m f and o	5	21	4
810		Fairall Fred.....f		m f and f s	5	24	4
875		Flaherty Patrick.....f		m f and o	6	26	12
876		Flaherty Edward.....f		m f and f s	6	26	12
877		Flaherty John.....f		m f and f s	6	26	12
879		Facey Edmund.....f		m f and o	6	25	11
779	j	Gibson Henry.....f		m f and o	6	20	12
777		Gibson John.....f		m f and o	6	19	12

LOT POSTOFFICE

19 7

23 12

19 4

19 4

19 4

21 13

21 13

19 13

22 12

22 12

22 12

24 12

21 12

21 12

21 12

26 12

*with*  
*WX*

*WX*  
*WX*  
*WX*

47

NO. ON ROLL	JURORS	NAME	OCCUPATION	ADDITIONS	CONCESSION	LOT	POSTOFFICE
930		Gibson John . . . . .	f	m f and o	6	26-7	12
937		Haves Robert . . . . .	f	m f and f s	5	27	12
936	j	Haves John . . . . .	f	m f and o	5	27	13
778	j	Hogg George . . . . .	f	m f and o	5	19-20	13
780	j	Henderson James . . . . .	f	m f and o	6	21	12
803	j	Henderson Wm . . . . .	f	m f and o	4	20	4
852		Hobbs John . . . . .	f	m f and o	4	25	8
855		Henry John . . . . .	f	m f and o	4	27	8
856		Henry Wm . . . . .	f	m f and f s	4	27	8
857		Henry Simon . . . . .	f	m f and f s	4	27	8
858		Henry J. A. . . . .	f	m f and f s	4	27	8
859		Henry John . . . . .	f	m f and f s	4	27	8
860		Henry James W. . . . .	f	m f and f s	4	27	8
933	j	Haves Robert . . . . .	f	m f and o	6	27	12
934	j	Haves George . . . . .	f	m f and o	6	27	12
935		Haves Henry . . . . .	f	m f and f s	6	27	12
770		Johnston Joseph . . . . .	f	m f and o	4	23	12
771	j	Johnston Archibald . . . . .	f	m f and o	4	23	12
770		Kennedy John . . . . .	f	m f and o	6	20-21	13
771	j	Kennedy John, jr. . . . .	f	m f and o	6	20-21	13
789		Logan Wesley . . . . .	f	m f and o	6	23	12
797		Lee Richard . . . . .	f	m f and o	4	19	4
798		Lee Walter . . . . .	f	m f and f s	4	19	4

*W*<sup>13</sup> *W*<sup>13</sup>  
*W*<sup>13</sup> *W*<sup>13</sup>

SUB-DIVISION No. 7.

41

POSTOFFICE	NO. ON ROLL	JURORS	NAME	OCCUPATION	ADDITIONS	CONCESSION	LOT	POSTOFFICE
12	799		Lee Wilber.....	f	m f and f s	4	19	4
	811		Logan Frank.....	f	m f and o	4	21	4
	821	j	Lince Frank.....	f	m f and o	7	26	12
	823		Locker Joseph.....	f	m f and o	7	25	12
	824		Locker John H.....	f	m f and f s	7	25	12
12	825		Lawlor Thomas.....	f	m f and o	6	25	12
13	929	j	Lince John.....	f	m f and o	6	27	12
13	957		Lince Wm.....	f	m f and o	7	26	12
12								
4								
8								
8								
8	804	j	McCutcheon Wm.....	f	m f and o	5	20	4
8	805		McCutcheon Fred.....	f	m f and o	5	20	4
8	851		McCutcheon Robt.....	f	m f and o	5	25	8
8	852		McCutcheon E.....	f	m f and f s	5	25	8
12	853	j	McQueen <del>John</del> <i>James</i> .....	f	m f and o	4	26	8 <i>WL</i>
12	861	j	Morden John.....	f	m f and o	5	27	8
12	878		Maguiness Wm.....	f	m f and o	6	26	11
12	882		Newman John.....	f	m f and o	7	27	11
12								
13 <i>WL</i>	795		Paterson Robert.....	f	m f and o	6	25	12
13 <i>WL</i>	823	j	Paterson James.....	f	m f and o	7	23	13
	114		Paterson Robert.....	f	m f and f s	7	23	13
	829		Phalan Michael.....	f	m f and o	7	23	13
	830	j	Phalan James.....	f	m f and o	7	23	13
	831	j	Phalan Patrick.....	f	m f and o	6	24	13
	833		Pearson —.....	f	m f and o	7	23	13
12	835	j	Phalan Michael.....	f	m f and o	7	22	13
4	843	j	Pardy Samuel.....	f	m f and o	5	23	12
4	844		Pardy Wm.....	f	m f and o	5	23	12

*Phalan Thomas mfo. 7. 23 WL*

*94*



NO. ON ROLL	JURORS	NAME	OCCUPATION	ADDITIONS	CONCESSION	LOT	POSTOFFICE
773	j	Ramsay Peter .....	f	m f and o	6	19	7
789	j	Rumble Lewis .....	f	m f and o	5	23	12
790	j	Rumble Clark .....	f	m f and o	5	23	12
816		Roberts Wm .....	f	m f and o	7	26	12
822		Roberts George .....	f	m f and f s	7	26	12
826		Rumble Wm .....	f	m f and o	7	24	12
827	j	Rumble John C. ....	f	m f and ten	7	24	12
828		Rumble John .....	f	m f and o	6	23	12
840	j	Randall George .....	f	m f and o	5	23	12
791	j	Stuart John .....	f	m f and ten	6	24	12
792	j	Stuart George .....	f	m f and ten	6	24	12
793		Stuart John, sr .....	f	m f and o	6	24	12
847	j	Stuart James .....	f	m f and o	5	24	8
794	j	Thompson James .....	f	m f and o	5	25	12
927	j	Thompson A. J. ....	f	m f and o	7	27	14
726	j	Wilkje Jas .....	f	m f and o	7	21	
812		Walters Wm. G. ....	f	m f and o	4	21	4
820	j	Wilford John .....	f	m f and o	7	26	12
838		Webb Chas .....	f	m f and o	5	22	12
839		Webb Eli .....	f	m f and o	4	22	12
845		Wiseman Thos .....	f	m f and o	4	24	12
846	j	Wiseman John .....	f	m f and o	4	24	12
848	j	Wiseman Wm. ....	f	m f and o	4	24	8
850		Wiseman J. W. ....	f	m f and f s	4	24	8
854	j	Wood Thos .....	f	m f and o	5	26	8
994	j	Wait Wm .....	f	m f and o	7	27	14

## PART II—List of persons entitled to Vote at Municipal Elections only.

NO. ON ROLL	JURORS	NAME	OCCUPATION	ADDITIONS	CONCESSION	LOT	POSTOFFICE
828		Bannerman Mary .....			6	24	12
881		Connor Mary .....			7	27	14
941		Cook Mrs. ....			6	26	12
772		Elgie Catharine .....			7	20	13
806		Henderson Jane... ..			4	21	4
807		Henderson Agnes... ..			4	21	4
834		Lince W. F.....		m f	6	22	13
928		Martin Maria.....			7	27	14
992		Purdy Mary.....			5	23	12

## PART III—List of persons entitled to Vote at Parliamentary Elections only.

931	^	Annett Robert... ..		m f	5	27	14
817	^	Patterson Joseph... ..		m f	7	26	12
932	^	Seal Frank... ..		m f	5	27	14
993		Wilson John .....		m f	7	20	13

### Polling Sub-Division No. 8.

Comprising the East half of Concession 4, the 5th, 6th and 7th Concessions, from Lot 28 to Lot 36, both inclusive.

PART I—Persons entitled to vote at both Municipal Elections and Elections to the Legislative Assembly.

NO. ON ROLL	JURORS	NAME	OCCUPATION	ADDITIONS	CONCESSION	LOT	POSTOFFICE
912	j	Atwell George.....	f	m f and o	7	31	14
902	j	Burch Robert.....	f	m t and o	6	34	14
958	j	Baynes Richard....	f	m f and o	5	32	11
88c	j	Conn Samuel.....	f	m f and o	7	28	14
883		Conn Hugh.....	f	m f	7	28	14
884		Conn Thomas .....	f	m f and f s	7	28	14
885		Conn Joshua.....	f	m f and f s	7	28	14
886		Conn Malcolm.....	f	m f and f s	7	28	14
887		Conn James.....	f	m f and f s	7	28	14
901	j	Crone John.....	f	m f and o	6	35	14
940	j	Cooke Chas.....	f	m f and o	6	28	14
960	j	Cooper George.....	f	m f and o	5	33	14
970	j	Crone Samuel.....	f	m f and o	6	35	14
971	j	Crone Archibald..	f	m f and o	6	35	14
903	j	Davis George .....	f	m f and o	7	34	14
904	j	Davis James H.....	f	m f and o	7	34	14

SUB-DIVISION No. 8.

NO. ON ROLL	JURORS	NAME	OCCUPATION	ADDITIONS	CONCESSION	LOT	POSTOFFICE
982	j	Dailey Stephen . . . . .	f	m f and o	4	33	14
983	j	Dailey James . . . . .	f	m f and o	4	33	14
984	j	Dufton Wm . . . . .	f	m f and o	5	32	14
985	j	Evans George B . . . . .	f	m f and o	4	31	11
862		Frayne John . . . . .	f	m f and o	5	28	12
909	j	Fraser James . . . . .	f	m f and o	6	32	14
925		Facey Denzil . . . . .	f	m f and o	7	29	14
926	j	Facey Robert . . . . .	f	m f and o	7	29	14
980		Fleming Richard . . . . .	f	m f and o	5	33	14
981	j	Fleming R. . . . .	f	m f and o	5	33	14
890	j	Greason Wm . . . . .	f	m f and o	7	31	14
891	j	Greason Henry . . . . .	f	m f and o	7	31	14
976	j	Giffin F. A. . . . .	f	m f and o	4	35	14
864	j	Haley Albert . . . . .	f	m f and o	4	28	11
865	j	Haley Wm . . . . .	f	m f and o	4	29	11
866	j	Haley Wm. A. . . . .	f	m f and o	5	29	11
867		Healey Arthur . . . . .	f	m f and f s	5	29	11
868		Haley Eli . . . . .	f	m f and f s	5	29	11
945	j	Headrick Robert . . . . .	f	m f and o	5	30	11
961	j	Haynes George . . . . .	f	m f and o	6	34	14

ns,

ns

POSTOFFICE

14

14  
11

14  
14  
14  
14  
14  
14  
14  
14  
14  
14

14  
14

NO. ON ROLL	JURORS	NAME	OCCUPATION	ADDITIONS	CONCESSION	LOT	POSTOFFICE
986	j	Headrick Dugal.....	f	m f	5	31	14
979	j	Holden George.....	f	m f and o	5	34	14
873	j	Johnston Henry.....	f	m f and o	4	30	11
950	j	Jerman John.....	f	m f and o	5	31	11
951		Jerman Wallace.....	f	m f and o	5	31	11
938	j	Louch George.....	f	m f and o	5	28	11
939	j	Louch David.....	f	m f and o	5	28	11
942	j	Louch William.....	f	m f and o	6	29	14
947	j	Langford Chas.....	f	m f and o	6	31	11
972		Lamond Peter.....	f	m f and o	6	36	14
973	j	Lamond Duncan.....	f	m f and o	6	36	14
893	j	Morden Thomas.....	f	m f and o	7	32	14
895	j	McKay Hugh.....	f	m f and o	7	35	14
896		McKay Alexander.....	f	m f and o	7	35	14
913	j	McLeod John.....	f	m f and o	6	31	14
922		Millne Alexander.....	f	m f and o	6	29	14
991		Millne James.....	f	m f and o	6	29	14
923	j	Millne George.....	f	m f and o	7	29	14
943		McAinsh John.....	f	m f and o	6	29	11
869		Near Nelson.....	f	m f and o	4	29	11
870		Near Henry.....	f	m f and o	6	30	11

SUB-DIVISION No. 8.

47

POSTOFFICE	NO. ON ROLL	JURORS	NAME	OCCUPATION	ADDITIONS	CONCESSION	LOT	POSTOFFICE
14	874	j	Near Peter .....	f	m f and o	4	31	11
14	894		Near Jacob .....	f	m f	4	33	14
11	907	j	Oliver Sidney .....	f	m f and o	6	33	14
11	952	j	Oliver Benjamin .....	f	m f and o	5	31	11
11	953		Oliver H nest .....	f	m f and f s	5	31	11
	954		Oliver Wesley .....	f	m f and f s	5	31	11
	977	j	Oliver Daniel .....	f	m f and o	5	35	14
	978	j	Oliver Isaac .....	f	m f and o	5	35	14
			✓					
11	908	j	Patterson Thos .....	f	m f and o	6	33	17
11	915	j	Pickel Edward .....	f	m f and o	7	30	14
14	917	j	Pickel Hugh .....	f	m f and o	7	30	14
14	924	j	Pickel Adam .....	f	m f and o	6	28	14
	944		Pickel Jacob .....	f	m f and o	6	30	11
14	892	j	Richardson John .....	f	m f and o	7	32	14
14	910	j	Robertson Chas .....	f	m f and o	7	32	14
14	911	j	Robertson Adam .....	f	m f and f s	7	32	14
14	966		Ready John .....	f	m f and o	6	34-5	14
14	967	j	Ready Wm .....	f	m f and o	6	34-5	14
14	974	j	Ready A. C .....	f	m f and o	5	35-6	14
11	975	j	Ready A. J .....	f	m f and o	5	35-6	14
11	888	j	Sterrit Chas .....	f	m f and o	7	29	14
11	889	j	Sterrit Robert .....	f	m f and o	7	30	14

NO. ON ROLL	JURORS	NAME	OCCUPATION	ADDITIONS	CONCESSION	LOT	POSTOFFICE
898		Smith Hiram.....	f	m f and o	7	35	14
899		Smith George.....	f	m f and f s	7	35	14
900		Smith Archibald.....	f	m f and f s	7	35	14
905	j	Stuart Johnston.....	f	m f and ten	7	33	14
919		Stainton John.....	f	m f and ten	6	30	14
920	j	Stainton George.....	f	m f and ten	6	30	14
946		Smith Peter.....	f	m f and o	6	30	11
955	j	Shoebottom John.....	f	m f and o	6	32	11
956		Shoebottom George.....	f	m f and f s	6	32	11
962	j	Stapleton Robert.....	f	m f and o	5	34	14
963	j	Stapleton Wm.....	f	m f and o	5	34	14
964	j	Stapleton Wm.....	f	m f and o	5	31	14
√							
863	j	Talbot John.....	f	m f and o	4	28	11
871		Thomas Samuel.....	f	m f and ten	5	30	11
872	j	Thomas Wm.....	f	m f and ten	5	30	11
897	j	Thompson Dugald.....	f	m f and o	7	36	14
927	j	Thompson Andrew J.....	f	m f and o	7	28	14
968	j	Thomas Samuel.....	f	m f and o	5	35	14
√							
959		Uren Wm.....	f	m f and o	6	33	14
√							
849	j	Wiseman Wm. A.....	f	m f and o	5	29	11
914		Wells George.....	f	m f and o	6	30	14
915		Wells Stephen.....	f	m f and o	6	30	14
949		Wait Wm.....	f	m f and o	6	31	11

SUB-DIVISION No. 8.

PART II—List of persons entitled to Vote at Municipal Elections

NO. ON ROLL	JURORS	NAME	OCCUPATION	ADDITIONS	CONCE	LOT	POSTOF
921		Adams Mary . . . . .			7	34	14
916		Davis Sarah V . . . . .			7	34	14
948		Langford Almira . . . . .			6	31	11
906		McGraw Mrs. . . . . .			7	33	
		Page Annie . . . . .			5	30	11
718		Sterrit Maggie . . . . .			7	30	14
969		Thomas Jane . . . . .			5	35	14

PART III—List of persons entitled to Vote at Parliamentary Elections only.

988	Oliver David . . . . .	m f	5	31	14
989	Sager John . . . . .	m f	5	31	14
990	Wigelsworth John . . . . .	m f	5	32	14

POSTOFFICE  
14  
14  
14  
14  
14  
11  
11  
11  
14  
14  
14

11  
11  
11  
14  
14  
14

14

11  
14  
14  
11



ON ROLL  
ERRORS

I, WILLIAM LEE, Clerk of the Municipality of West Nissouri, do hereby certify that Parts I and III of the foregoing List constitute a correct list for the year 1897 of all persons appearing by the last revised Assessment Roll for the said Municipality to be entitled to vote at Elections for Members of the Legislative Assembly, and that Parts I and II constitute a correct list for said year of all persons appearing by the said Roll to be entitled to vote at Municipal Elections in said Municipality; and I hereby call upon all electors to examine the said list, and if any omissions or other errors are perceived therein to take immediate proceedings to have the said errors corrected according to law.

Number of Jurors on the foregoing List, Five Hundred and Thirty (530).  
June 9th, 1897.

W. LEE, TOWNSHIP CLERK.

*Thurmond Lee*

CA40N1W49X7V54  
OE

