

**CIHM  
Microfiche  
Series  
(Monographs)**

**ICMH  
Collection de  
microfiches  
(monographies)**



**Canadian Institute for Historical Microreproductions / Institut canadien de microreproductions historiques**

**© 1997**

## Technical and Bibliographic Notes / Notes techniques et bibliographiques

The Institute has attempted to obtain the best original copy available for filming. Features of this copy which may be bibliographically unique, which may alter any of the images in the reproduction, or which may significantly change the usual method of filming are checked below.

- Coloured covers / Couverture de couleur
- Covers damaged / Couverture endommagée
- Covers restored and/or laminated / Couverture restaurée et/ou pelliculée
- Cover title missing / Le titre de couverture manque
- Coloured maps / Cartes géographiques en couleur
- Coloured ink (i.e. other than blue or black) / Encre de couleur (i.e. autre que bleue ou noire)
- Coloured plates and/or illustrations / Planches et/ou illustrations en couleur
- Bound with other material / Relié avec d'autres documents
- Only edition available / Seule édition disponible
- Tight binding may cause shadows or distortion along interior margin / La reliure serrée peut causer de l'ombre ou de la distorsion le long de la marge intérieure.
- Blank leaves added during restorations may appear within the text. Whenever possible, these have been omitted from filming / Il se peut que certaines pages blanches ajoutées lors d'une restauration apparaissent dans le texte, mais, lorsque cela était possible, ces pages n'ont pas été filmées.
- Additional comments / Commentaires supplémentaires:

L'institut a microfilmé le meilleur exemplaire qu'il lui a été possible de se procurer. Les détails de cet exemplaire qui sont peut-être uniques du point de vue bibliographique, qui peuvent modifier une image reproduite, ou qui peuvent exiger une modification dans la méthode normale de filmage sont indiqués ci-dessous.

- Coloured pages / Pages de couleur
- Pages damaged / Pages endommagées
- Pages restored and/or laminated / Pages restaurées et/ou pelliculées
- Pages discoloured, stained or foxed / Pages décolorées, tachetées ou piquées
- Pages detached / Pages détachées
- Showthrough / Transparence
- Quality of print varies / Qualité inégale de l'impression
- Includes supplementary material / Comprend du matériel supplémentaire
- Pages wholly or partially obscured by errata slips, tissues, etc., have been refilmed to ensure the best possible image / Les pages totalement ou partiellement obscurcies par un feuillet d'errata, une pelure, etc., ont été filmées à nouveau de façon à obtenir la meilleure image possible.
- Opposing pages with varying colouration or discolorations are filmed twice to ensure the best possible image / Les pages s'opposant ayant des colorations variables ou des décolorations sont filmées deux fois afin d'obtenir la meilleure image possible.

This item is filmed at the reduction ratio checked below / Ce document est filmé au taux de réduction indiqué ci-dessous.

10x																				
														✓						
	12x			16x			20x			24x			28x							32x

The copy filmed here has been reproduced thanks to the generosity of:

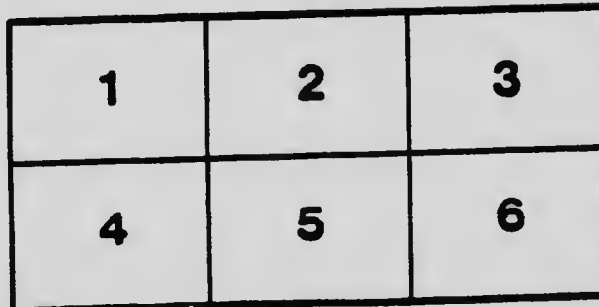
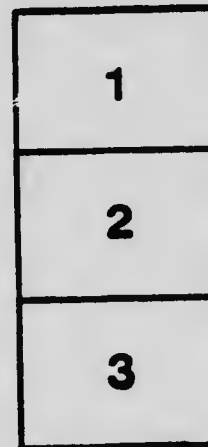
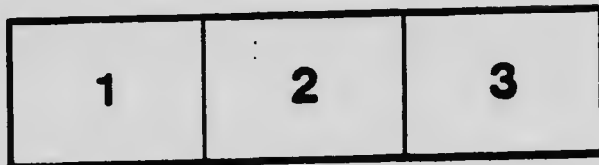
National Library of Canada

The images appearing here are the best quality possible considering the condition and legibility of the original copy and in keeping with the filming contract specifications.

Original copies in printed paper covers are filmed beginning with the front cover and ending on the last page with a printed or illustrated impression, or the back cover when appropriate. All other original copies are filmed beginning on the first page with a printed or illustrated impression, and ending on the last page with a printed or illustrated impression.

The last recorded frame on each microfiche shall contain the symbol  $\rightarrow$  (meaning "CONTINUED"), or the symbol  $\nabla$  (meaning "END"), whichever applies.

Maps, plates, charts, etc., may be filmed at different reduction ratios. Those too large to be entirely included in one exposure are filmed beginning in the upper left hand corner, left to right and top to bottom, as many frames as required. The following diagrams illustrate the method:



L'exemplaire filmé fut reproduit grâce à la générosité de:

Bibliothèque nationale du Canada

Les images suivantes ont été reproduites avec le plus grand soin, compte tenu de la condition et de la netteté de l'exemplaire filmé, et en conformité avec les conditions du contrat de filmage.

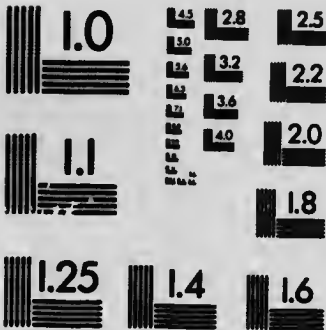
Les exemplaires originaux dont la couverture en papier est imprimée sont filmés en commençant par le premier plat et en terminant soit par la dernière page qui comporte une empreinte d'impression ou d'illustration, soit par le second plat, selon le cas. Tous les autres exemplaires originaux sont filmés en commençant par la première page qui comporte une empreinte d'impression ou d'illustration et en terminant par la dernière page qui comporte une telle empreinte.

Un des symboles suivants apparaît sur la dernière image de chaque microfiche, selon le cas: le symbole  $\rightarrow$  signifie "A SUIVRE", le symbole  $\nabla$  signifie "FIN".

Les cartes, planches, tableaux, etc., peuvent être filmés à des taux de réduction différents. Lorsque le document est trop grand pour être reproduit en un seul cliché, il est filmé à partir de l'angle supérieur gauche, de gauche à droite, et de haut en bas, en prenant le nombre d'images nécessaire. Les diagrammes suivants illustrent la méthode.

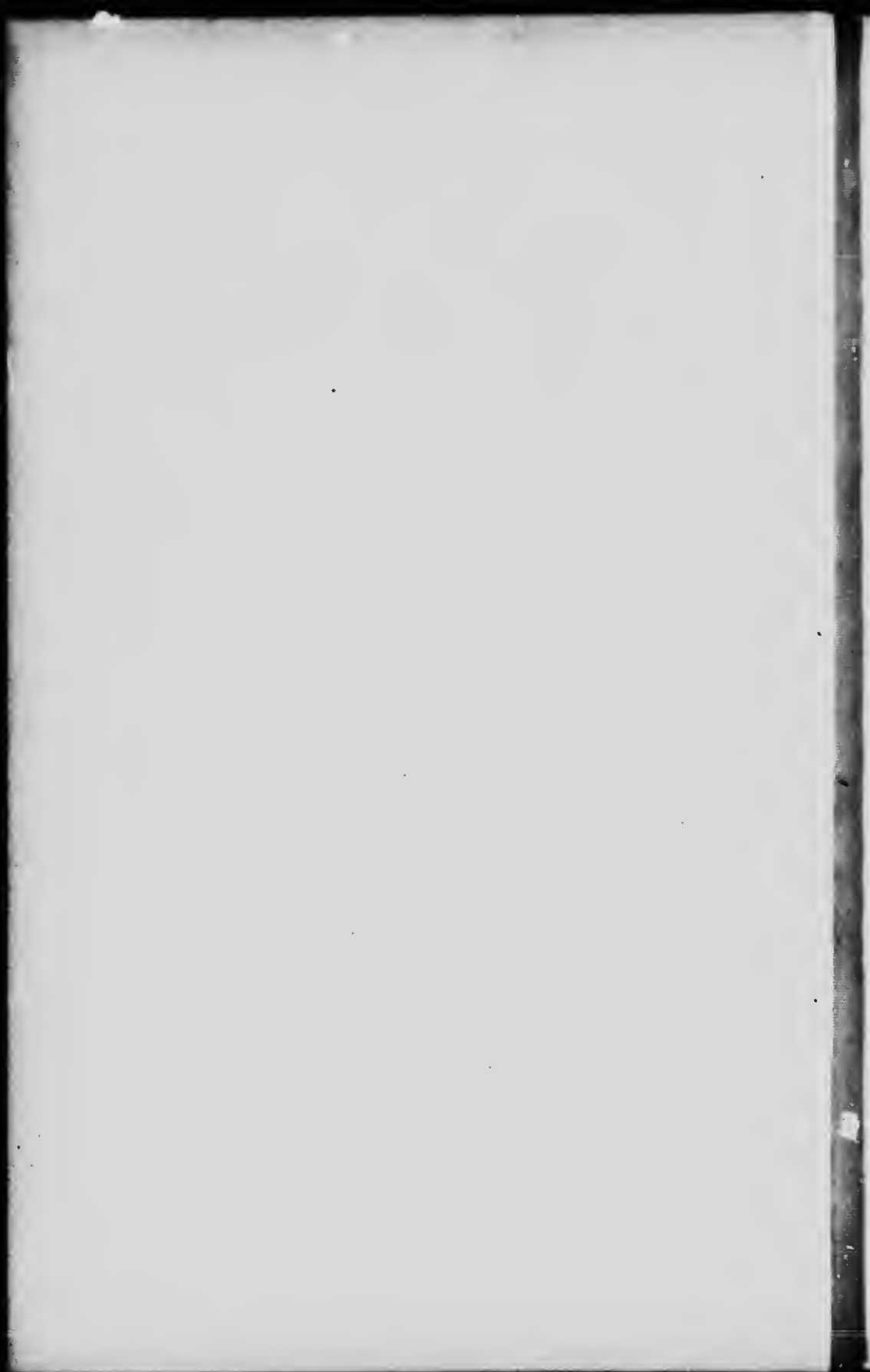
# MICROCOPY RESOLUTION TEST CHART

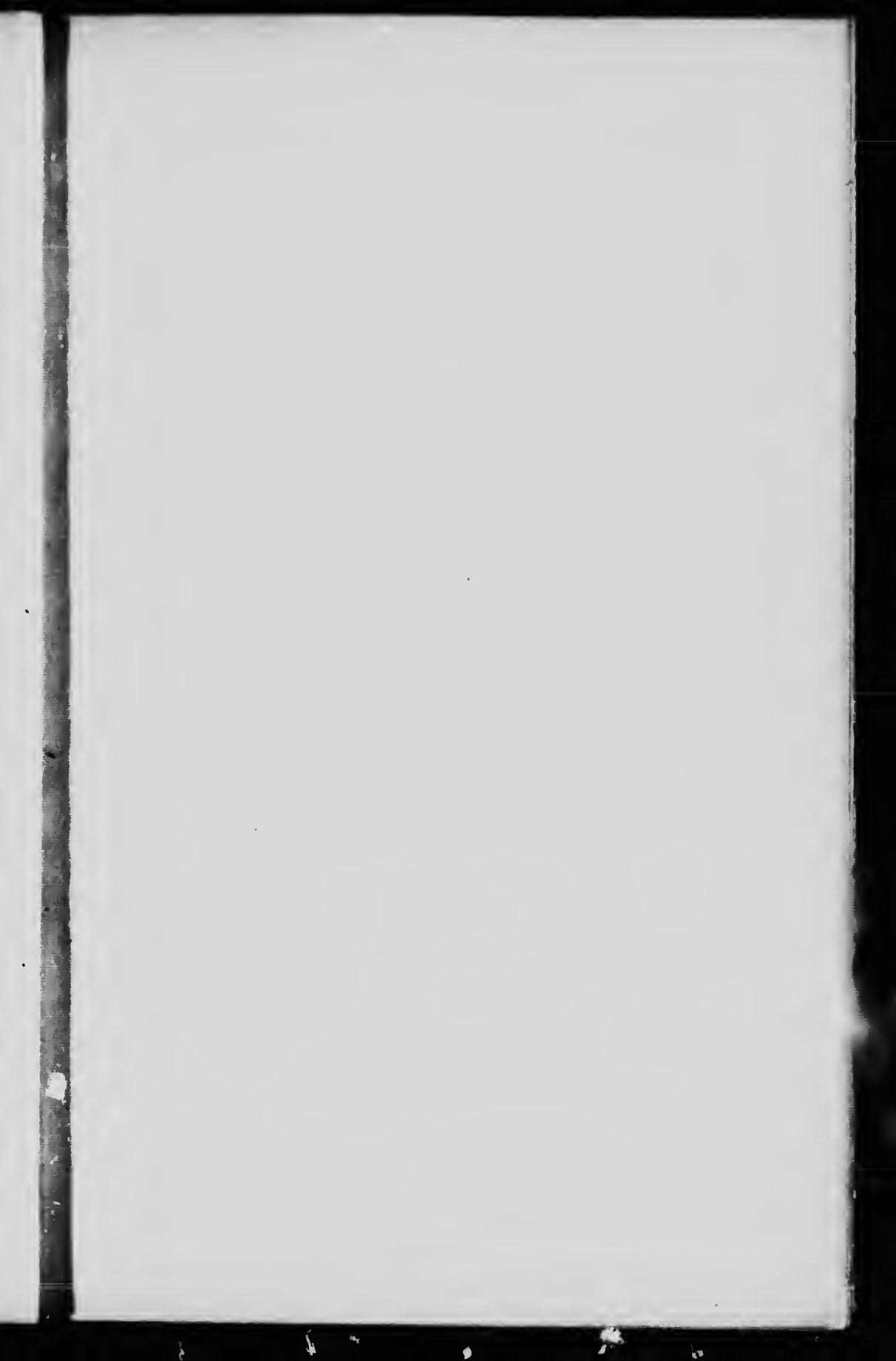
(ANSI and ISO TEST CHART No. 2)

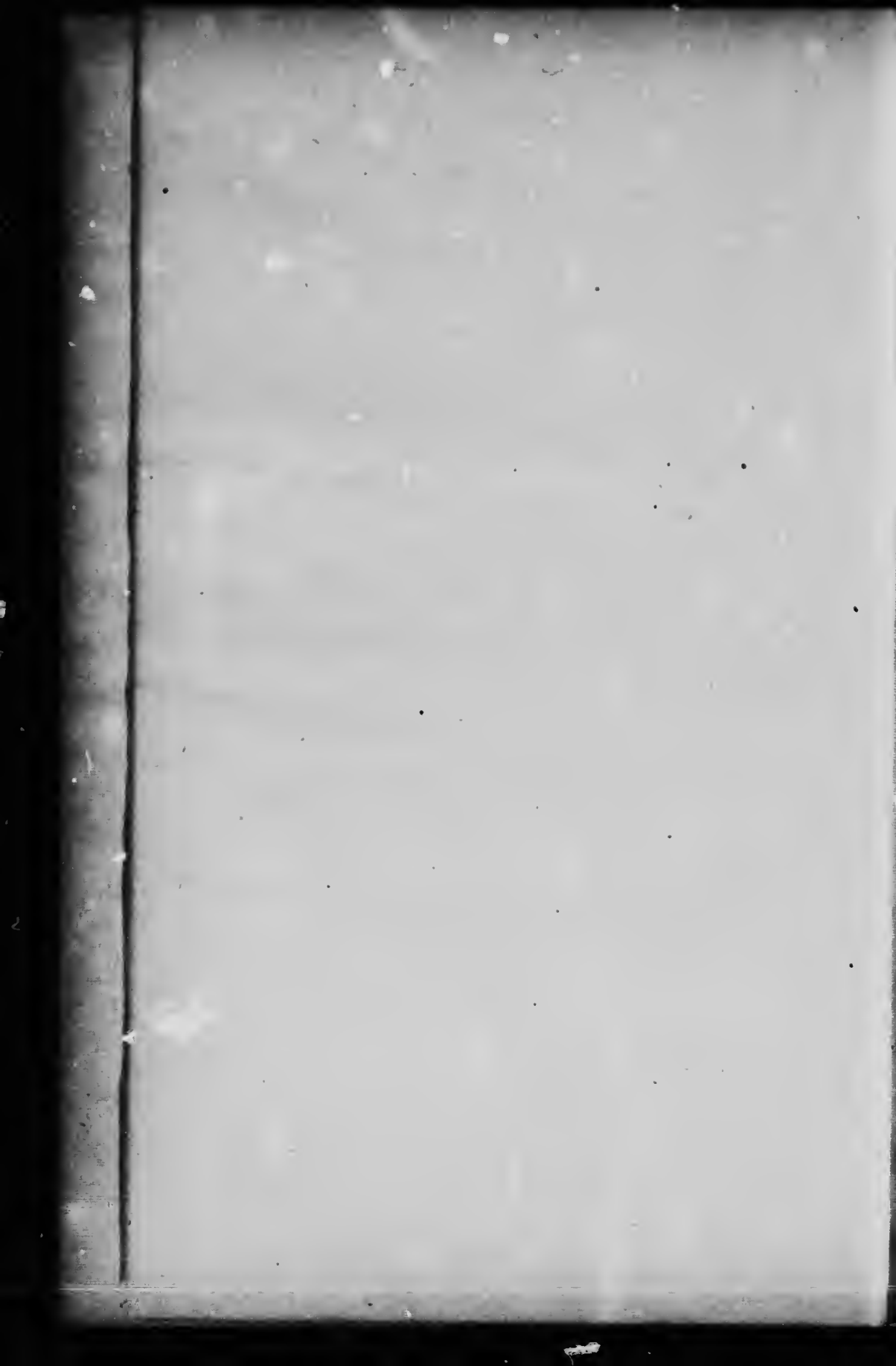


**APPLIED IMAGE Inc**

1653 East Main Street  
Rochester, New York 14609 USA  
(716) 482-0300 - Phone  
(716) 288-5089 - Fax







DEPARTMENT OF PUBLIC WORKS, CANADA

---

TO ACCOMPANY REPORT

---

# GEORGIAN BAY SHIP CANAL

1908

---

TYPICAL VIEWS ON THE PROJECTED ROUTE

---

*PRINTED BY ORDER OF PARLIAMENT*

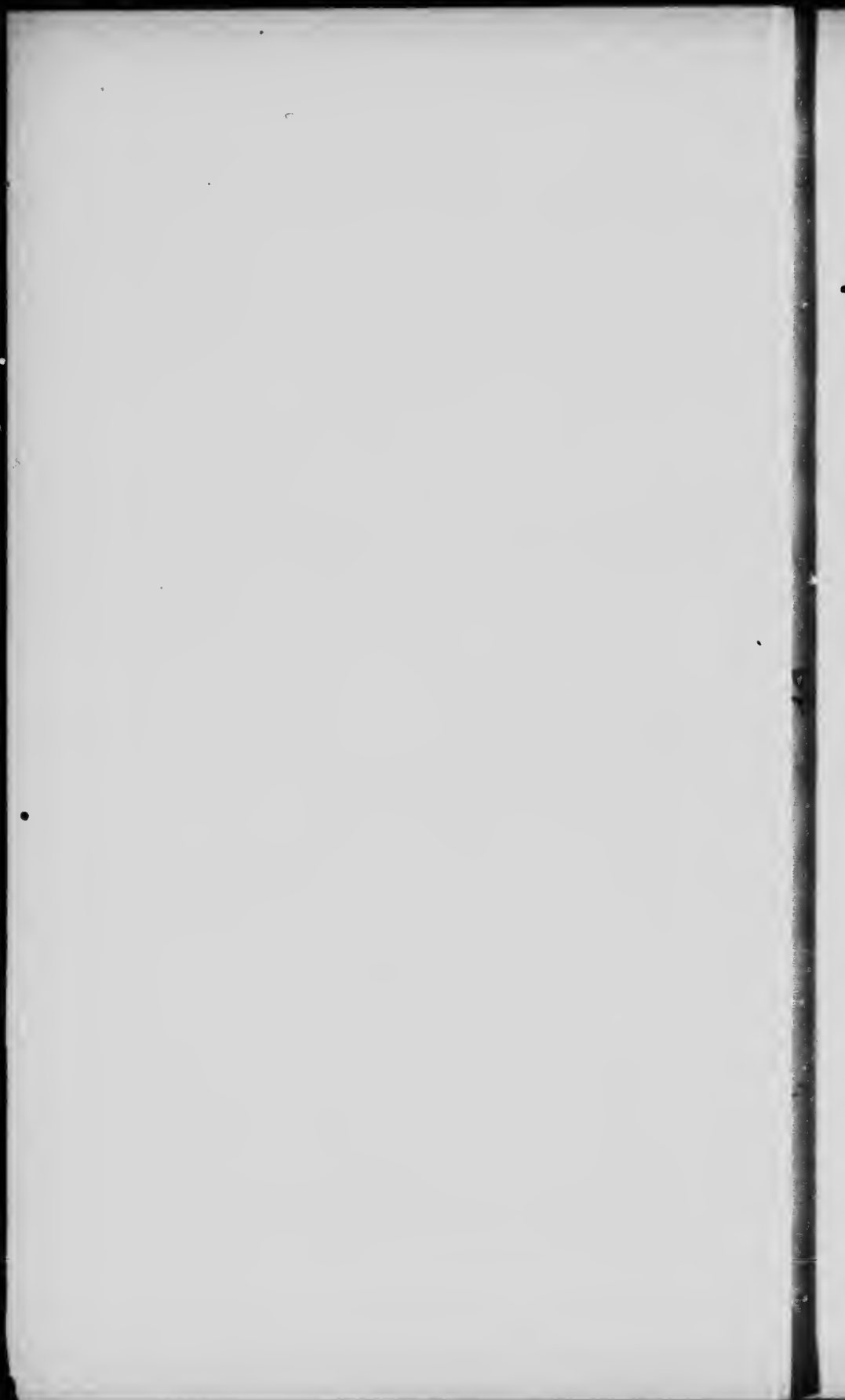


OTTAWA

PRINTED FOR C. H. PARMELEE, PRINTER TO THE KING'S MOST  
EXCELLENT MAJESTY

1909

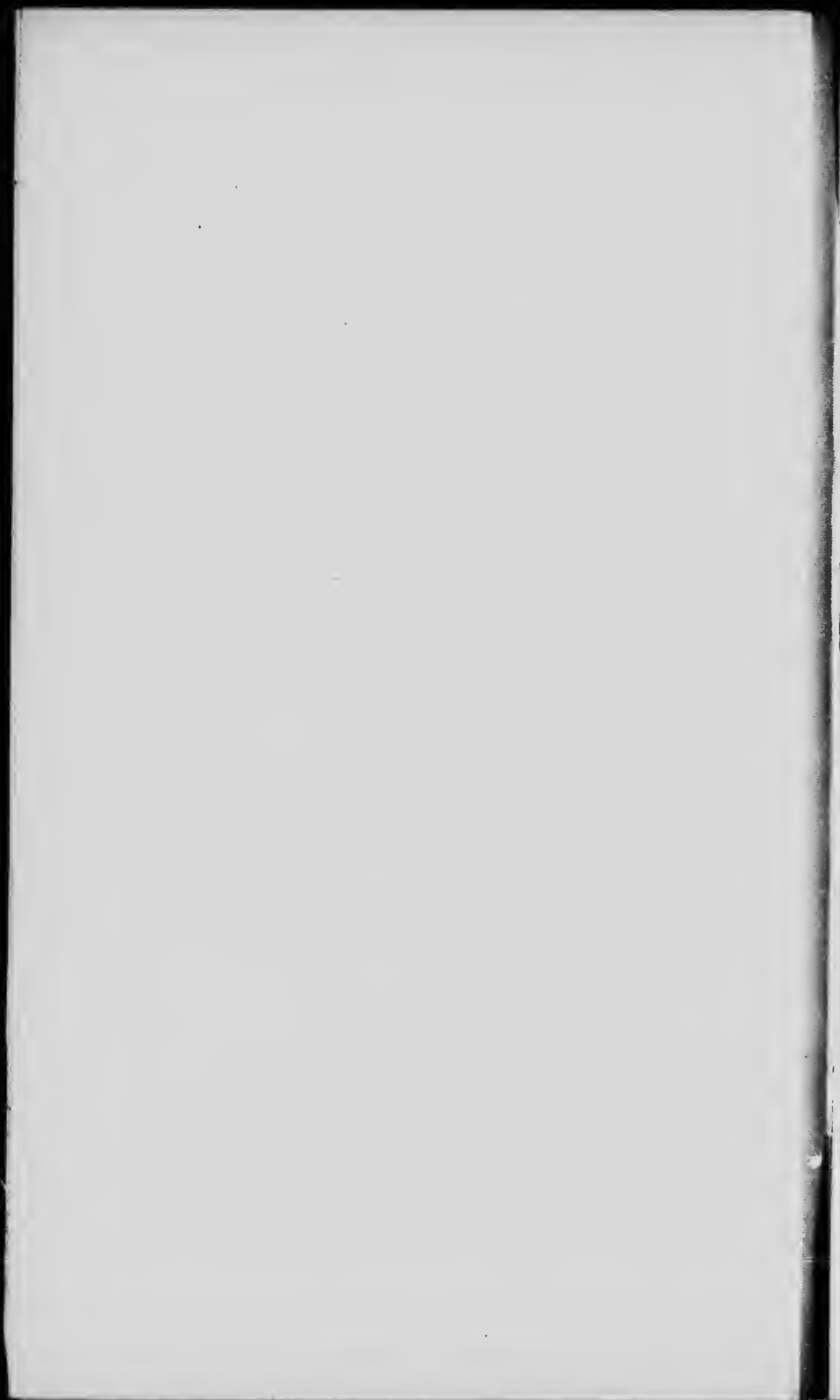




## INDEX

---

- No. 1—Montreal Harbour.  
2—Ste. Anne de Bellevue.  
3—Carillon Dam.  
4—Long Sault Rapids—Hawkesbury.  
5—City of Hull from Ottawa.  
6—Chaudière Falls, Ottawa.  
7—Parliament Hill and Rideau Canal Locks—Ottawa.  
8—Chats Falls.  
9—Allumettes Rapids.  
10—Deep River (Ottawa River) above McQuestions.  
11—DesJoachims Rapids.  
12—Deux Rivières Rapids from foot.  
13—Above Deux Rivières Rapids.  
14—Confluence of Mattawa and Ottawa Rivers.  
15—Mattawa River at Big Paresseux Falls.  
16—West end of Trout Lake (summit).  
17—French River, 7 miles below Chaudière Falls.  
18—Little Pine Rapid, French River.  
19—French River looking towards Pickerel River.  
20—The Horseshoe Pickerel River.  
21—Narrows of the Pickerel River below the Twin Islands.  
22—Pickerel River 3 miles above Ox Lake.  
23—Ox Lake.  
24—Dalles Rapids.

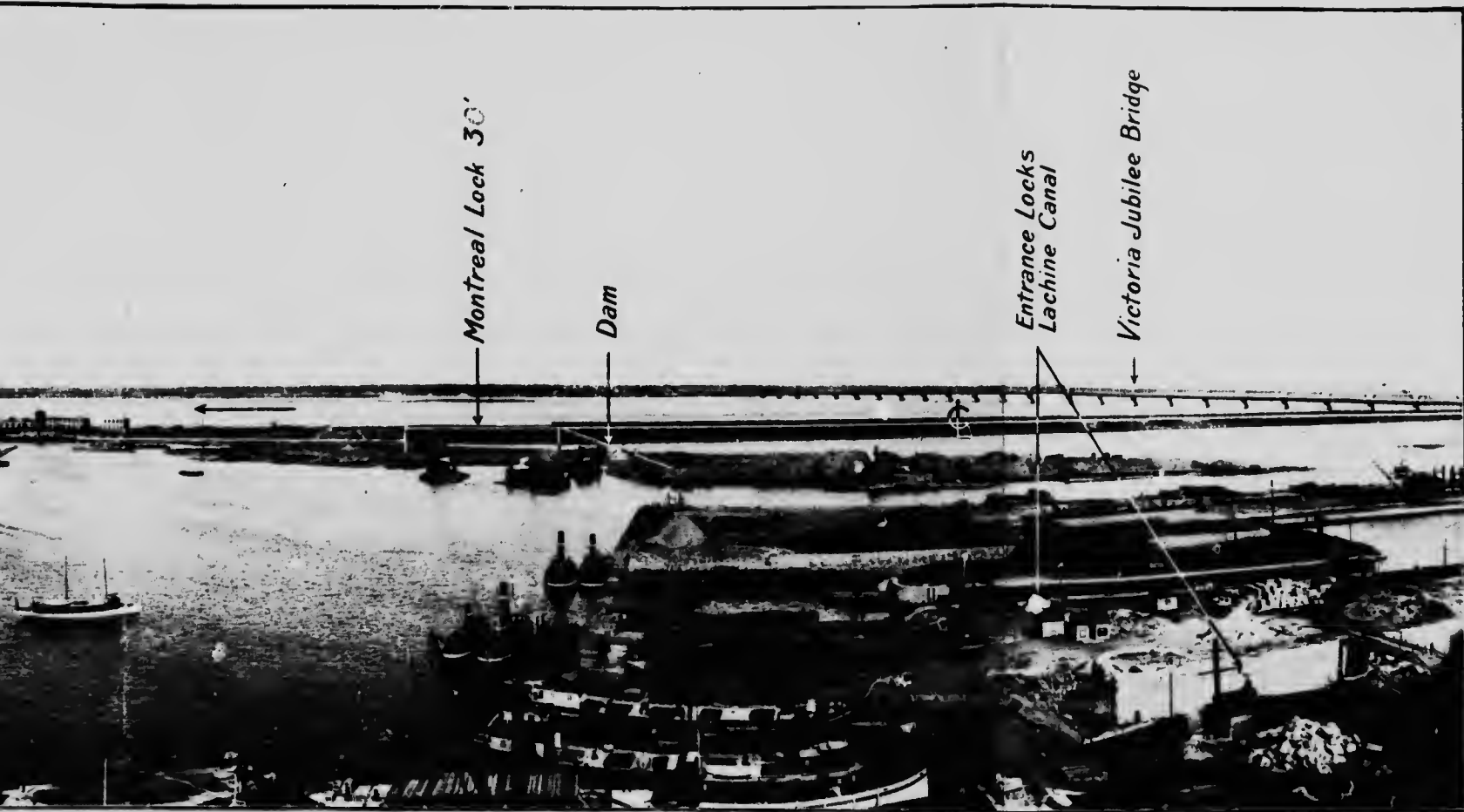


**No. 1**

**Montreal Harbour.**



No. 1—Montreal Harbour,



Harbour, Eastern entrance to Canal.



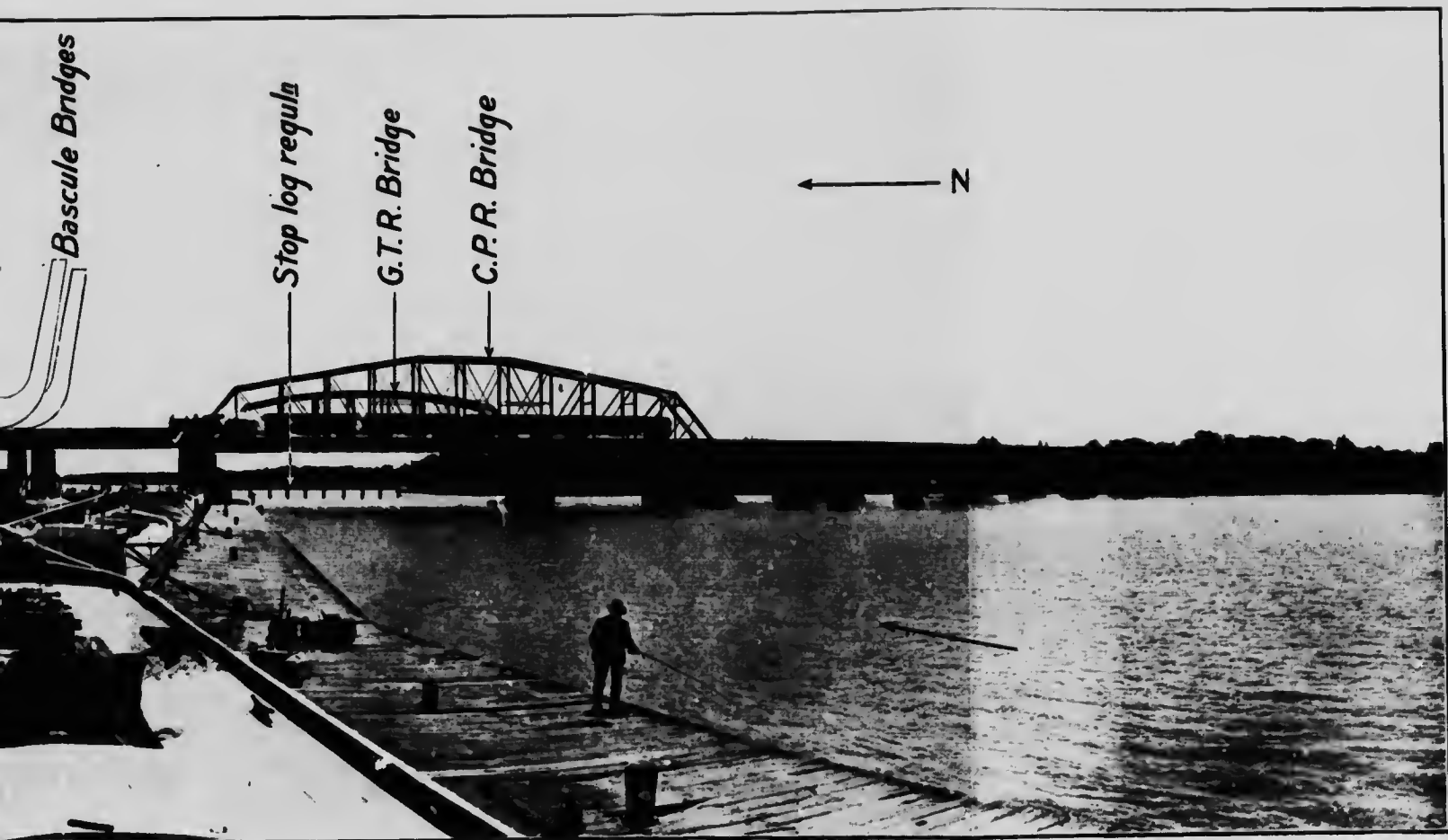
**No. 2**

**Ste. Anne de Bellevue.**





No. 2.—Ste. Anne de Bellevue, between Lake St.



Lake St. Louis and Lake of Two Mountains.



**No. 3**

**Carillon Dam.**



No. 3.—Carillon Dam—Canal



m—Canal through ridge on South side.



No. 4

Long Sault Rapids—  
Hawkesbury.

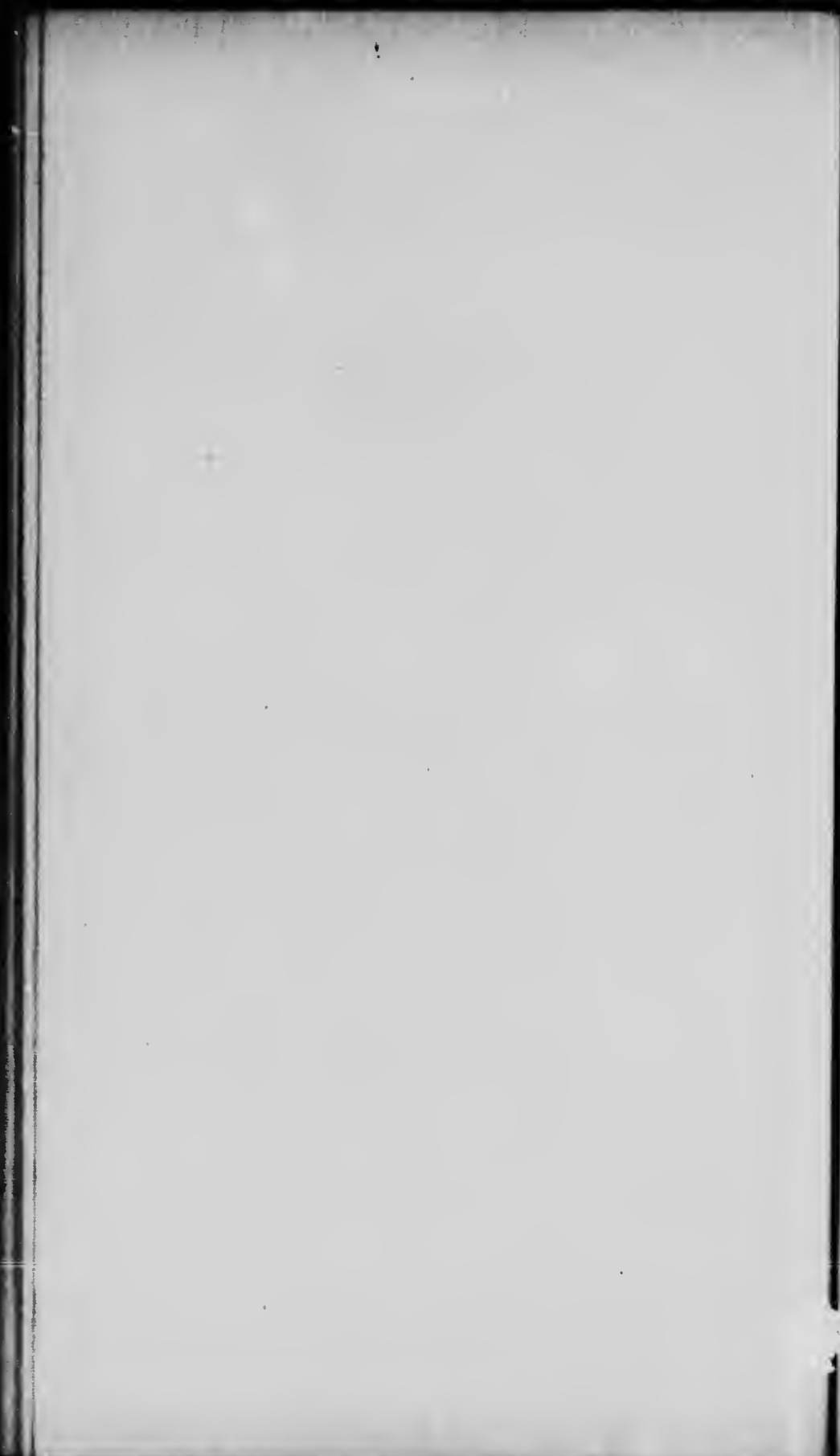




No. 4.—Long Sault Rapids at Hawkes



t Hawkesbury—Canal on flats on South side.



**No. 5**

**City of Hull from  
Ottawa.**



No. 5.—View of Hull from Ottawa—



Ottawa—Canal line runs North of the City.

*[The page contains extremely faint, illegible text, likely bleed-through from the reverse side of the document. The text is too light to transcribe accurately.]*

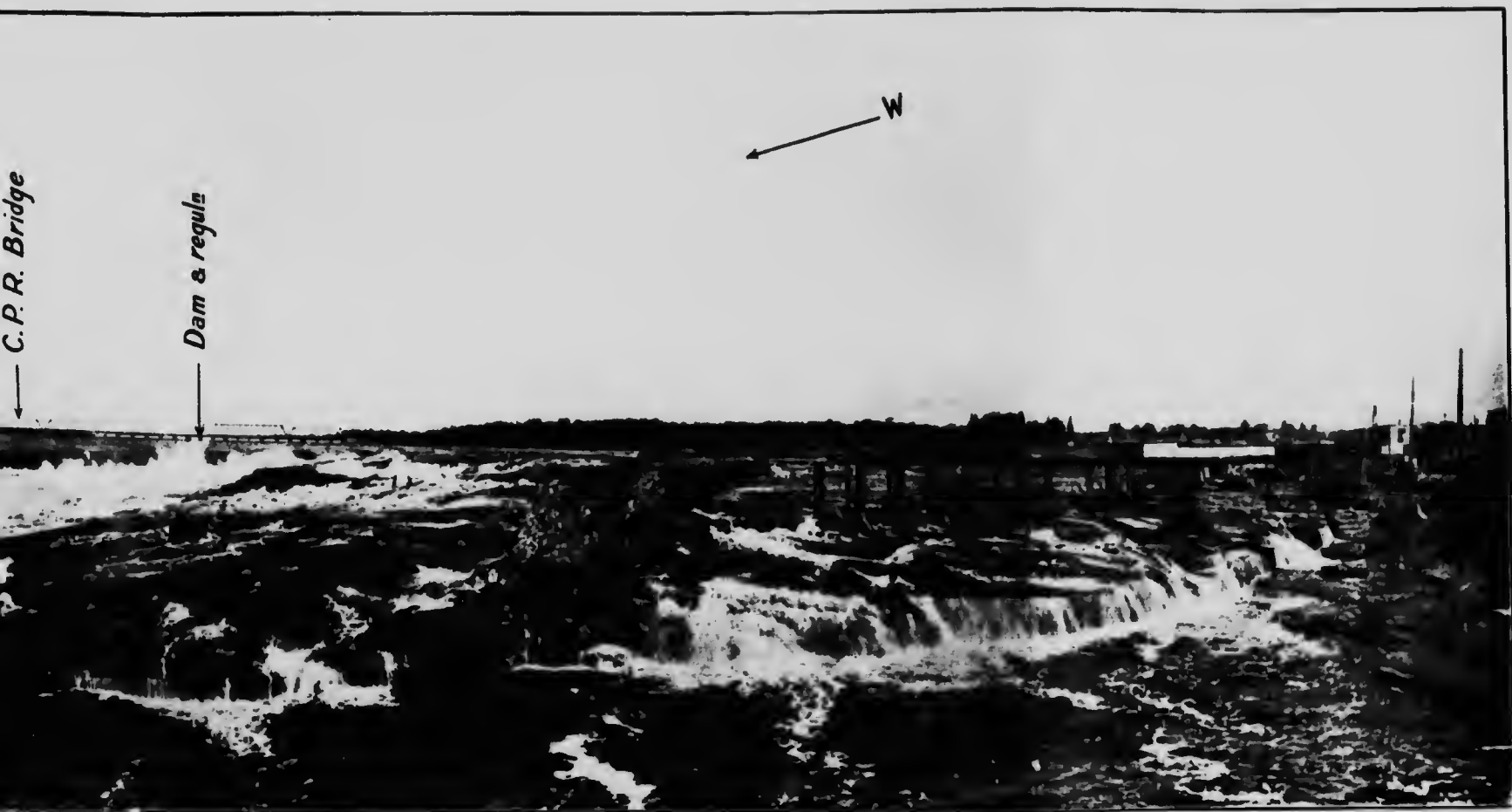
**No. 6**

**Chaudière Falls,  
Ottawa.**





No. 6.—

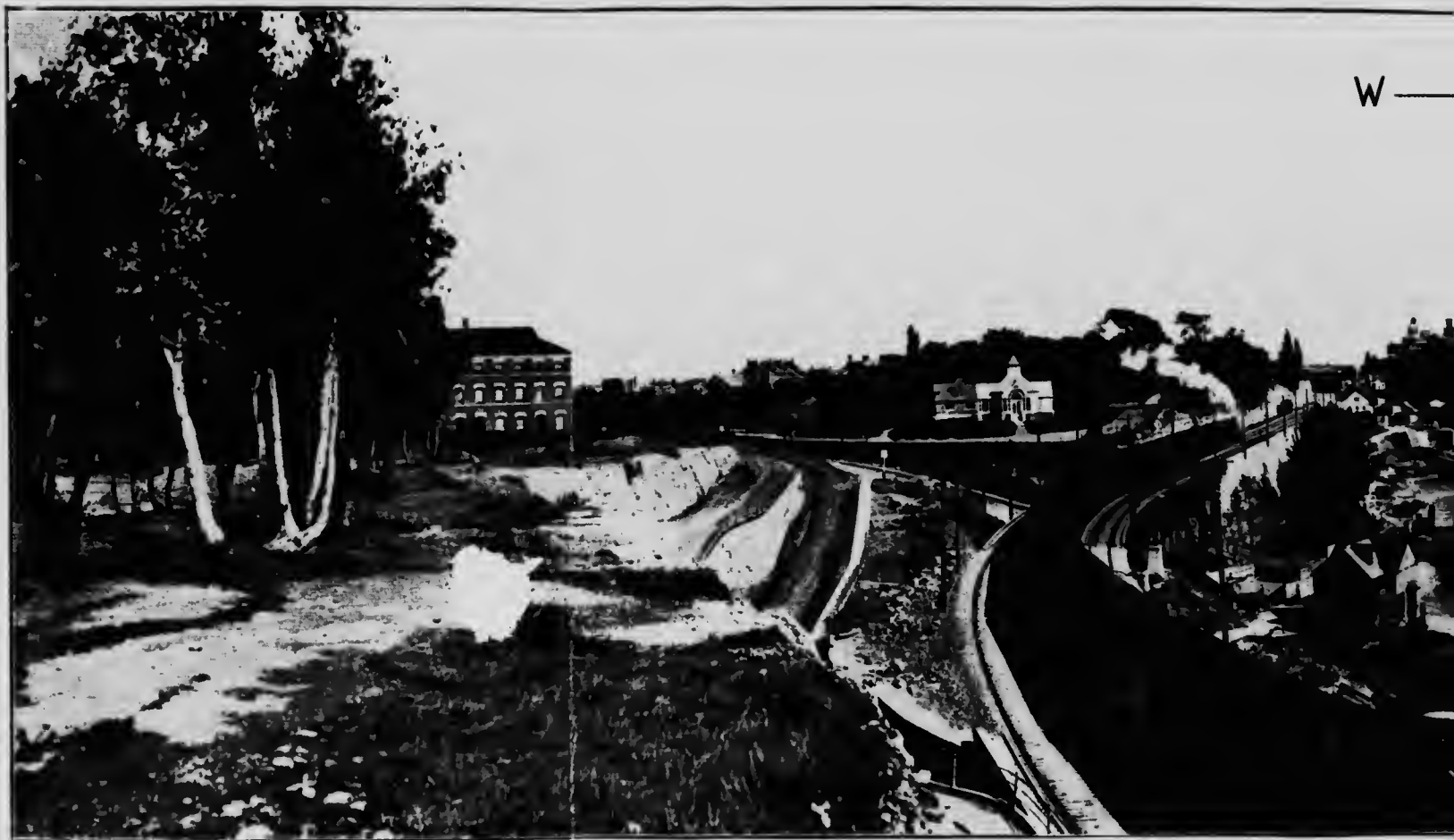


No. 6.—Chaudière Falls.



**No. 7**

Parliament Hill and  
Rideau Canal Locks—  
Ottawa.



No. 7.—Parliament Hill and Ri



Mill and Rideau Canal Locks at Ottawa.



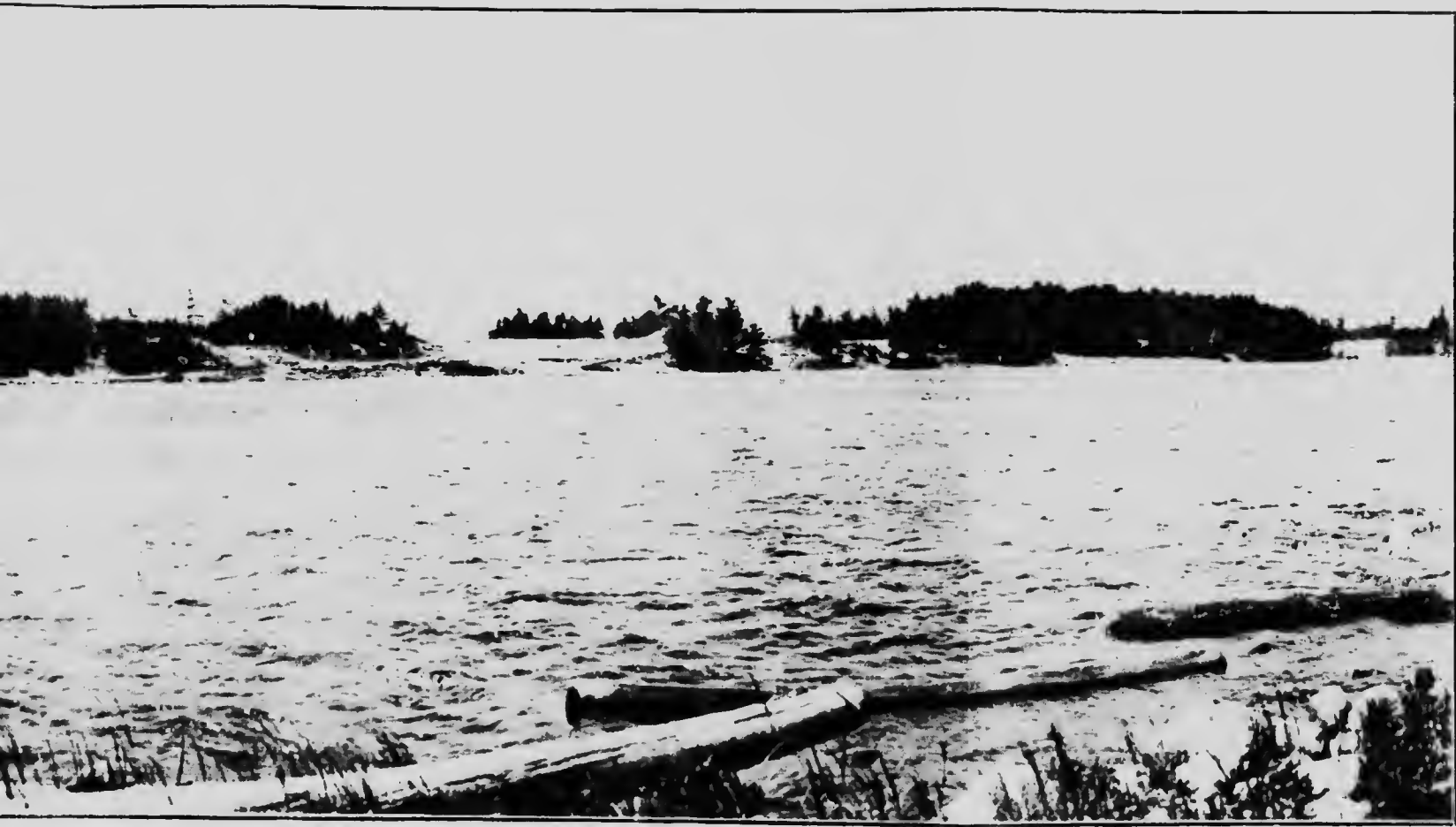
No. 3

Chats Falls.





No. 8. Chat



8. Chats Falls.



No. 9

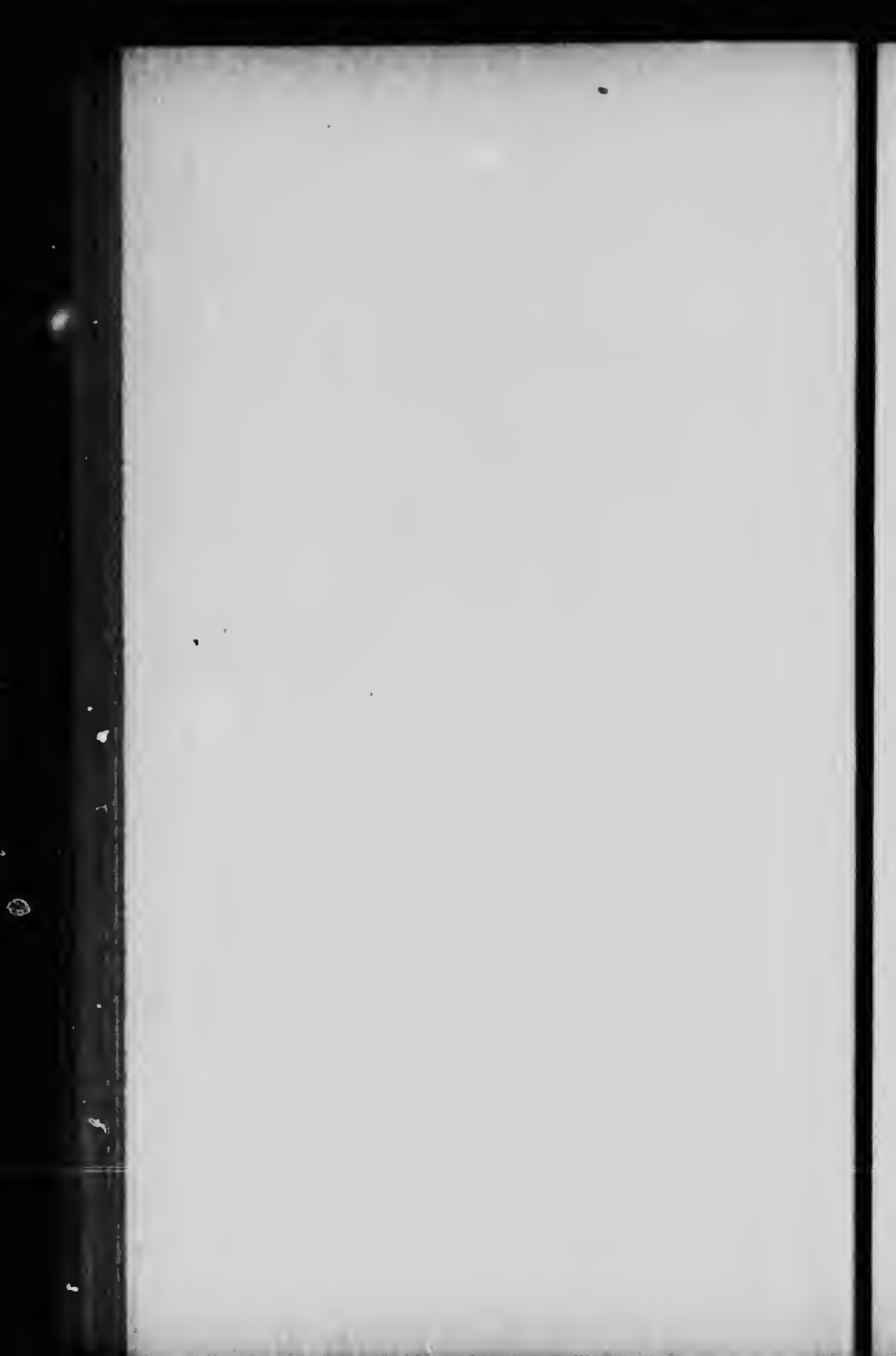
Allumette Rapids.



No. 9.—Allumette Rapids from below Low



Lower water level to be raised 18 feet.



No. 10

Deep River (Ottawa  
River) above  
McQuestiona.

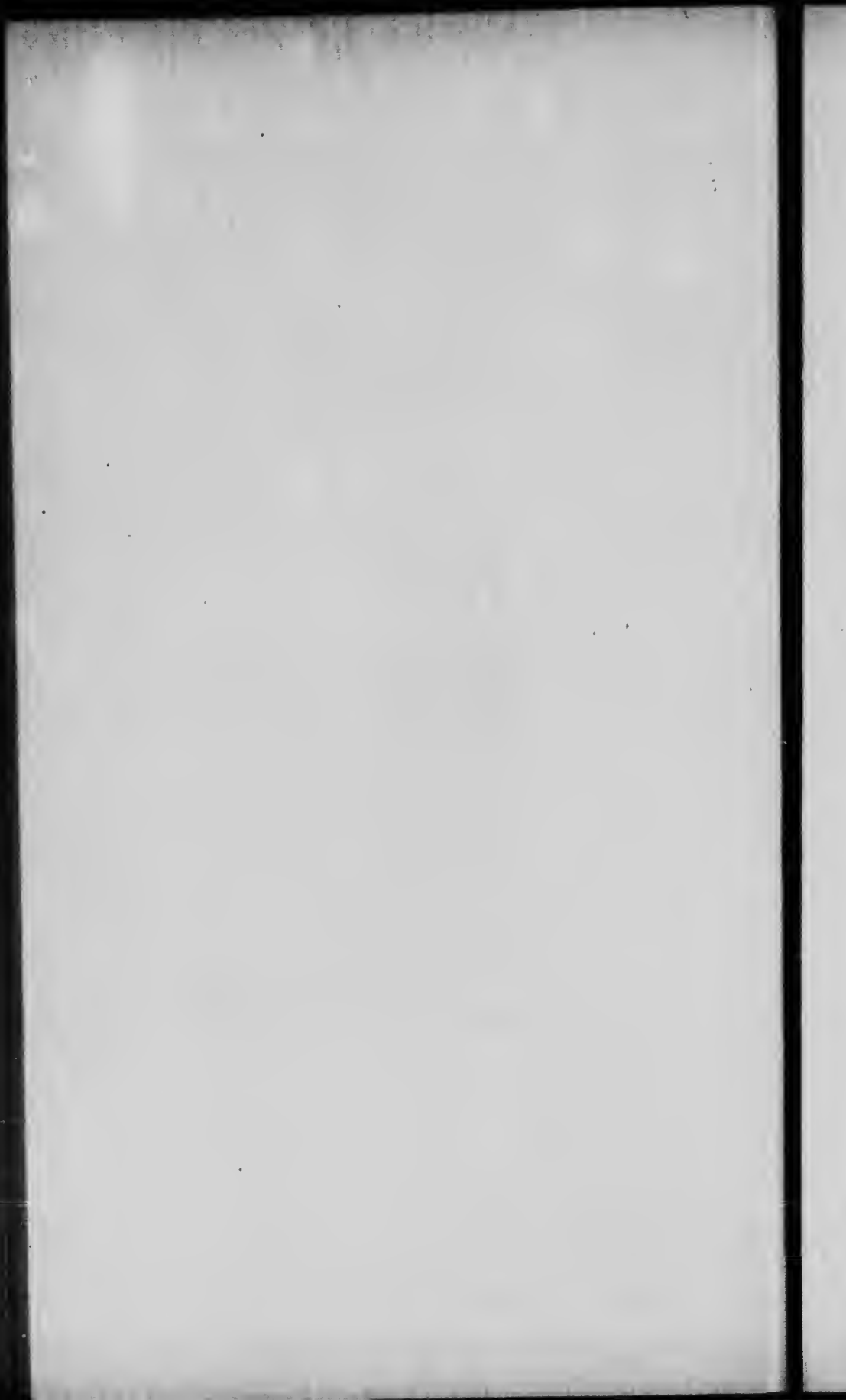




No. 10.—Deep River above



river above McQuestions.



No. 11

DesJoachims Rapids.

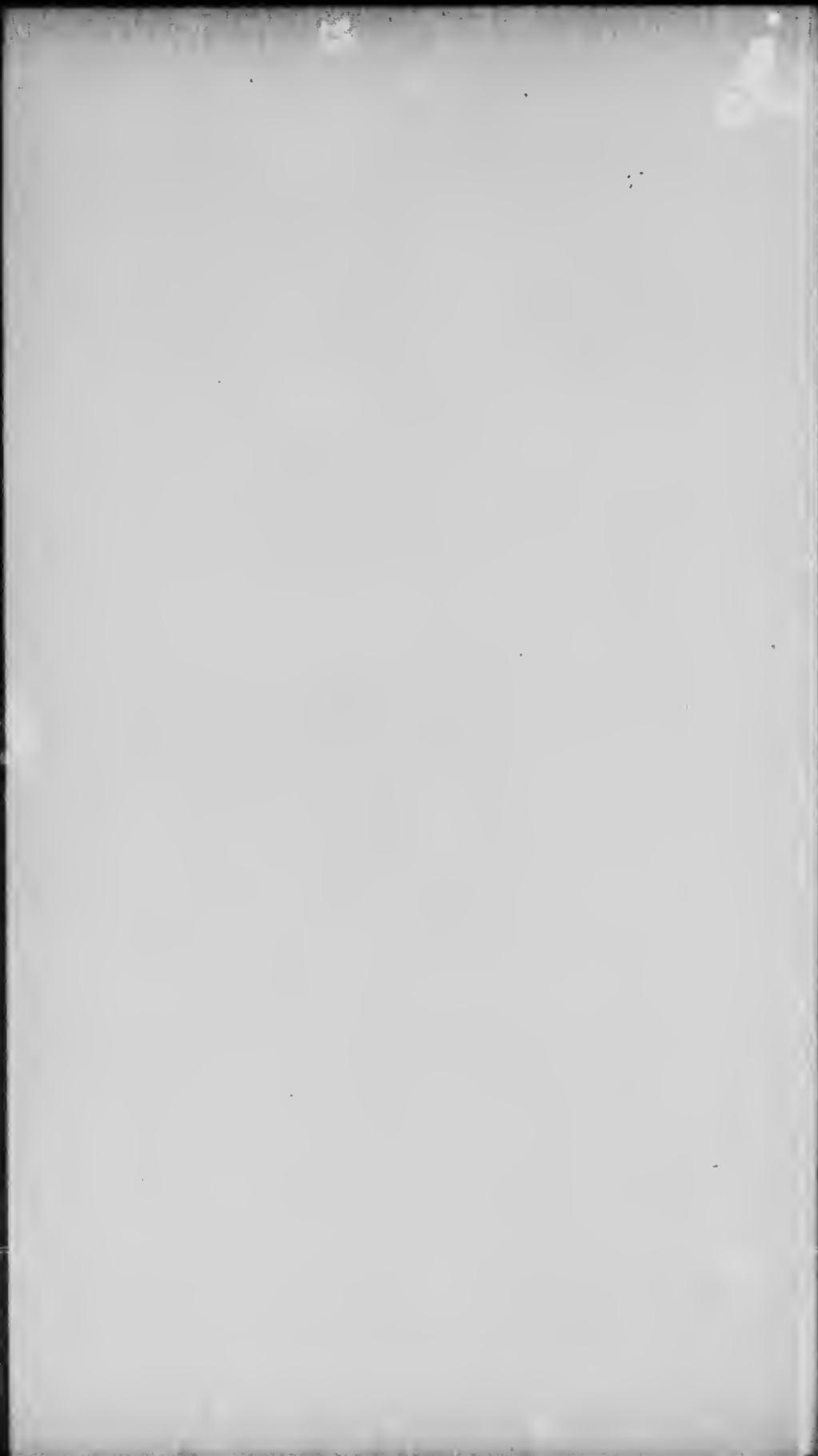


No. 11.—DesJoachims Rapids from bridge



Lock 40'

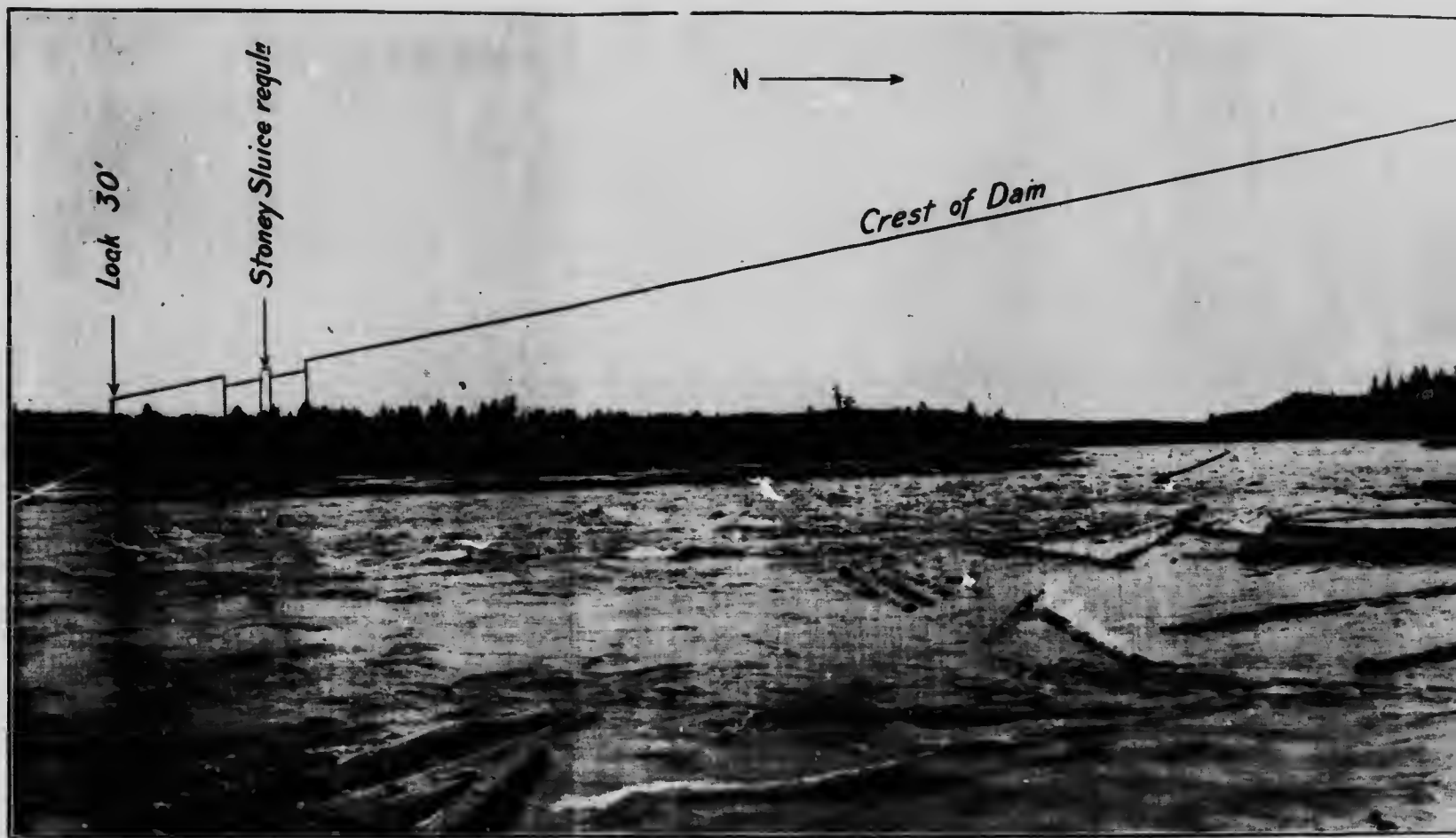
m bridge—Water surface to be raised 30 feet



**No. 12**

**Deux Rivières Rapids  
from foot.**





No. 12.—Upstream from foot of Deux Rivières Rapids at

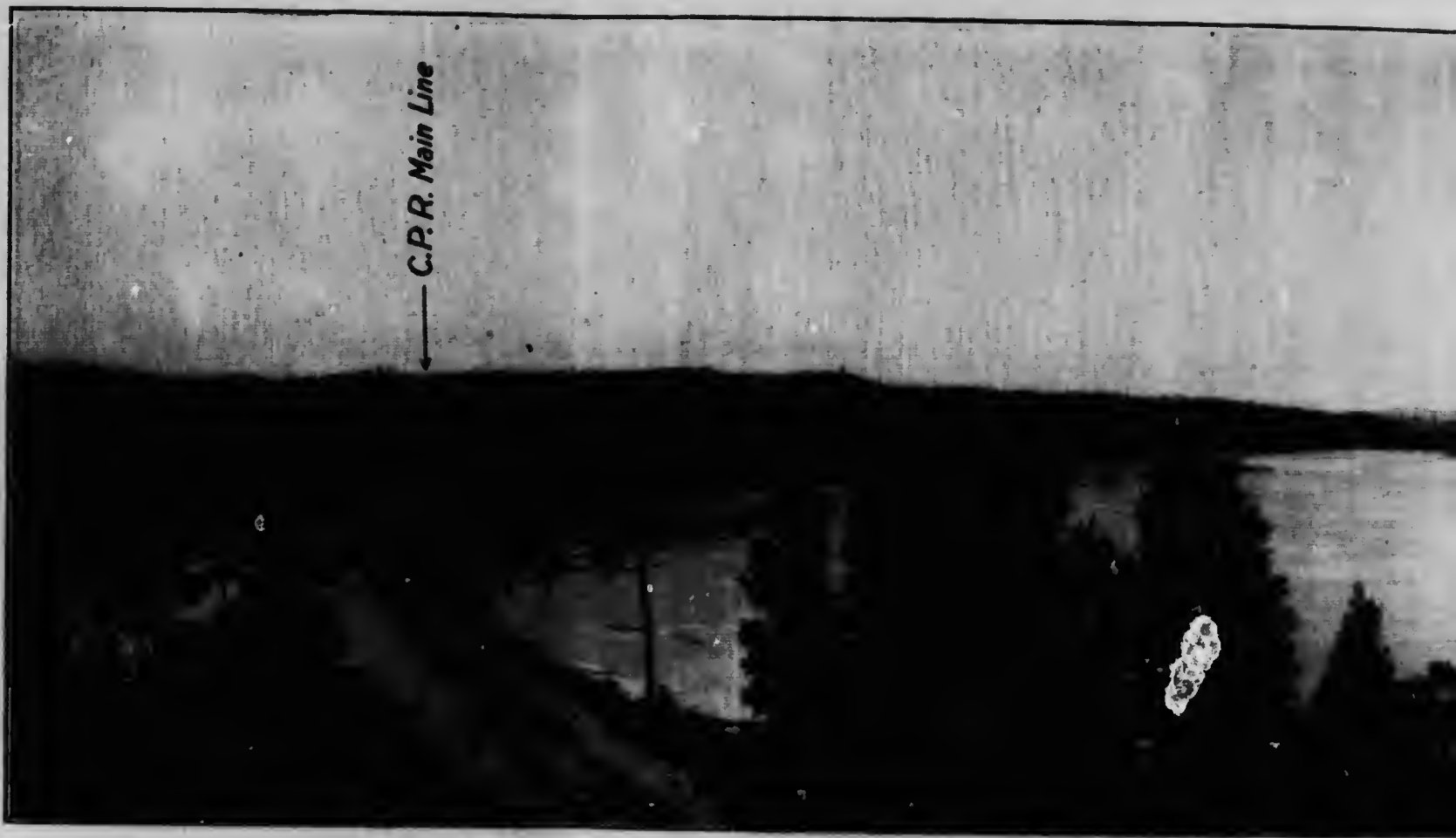


Rapids at Dam and Lock site—Canal passes inshore to the left.

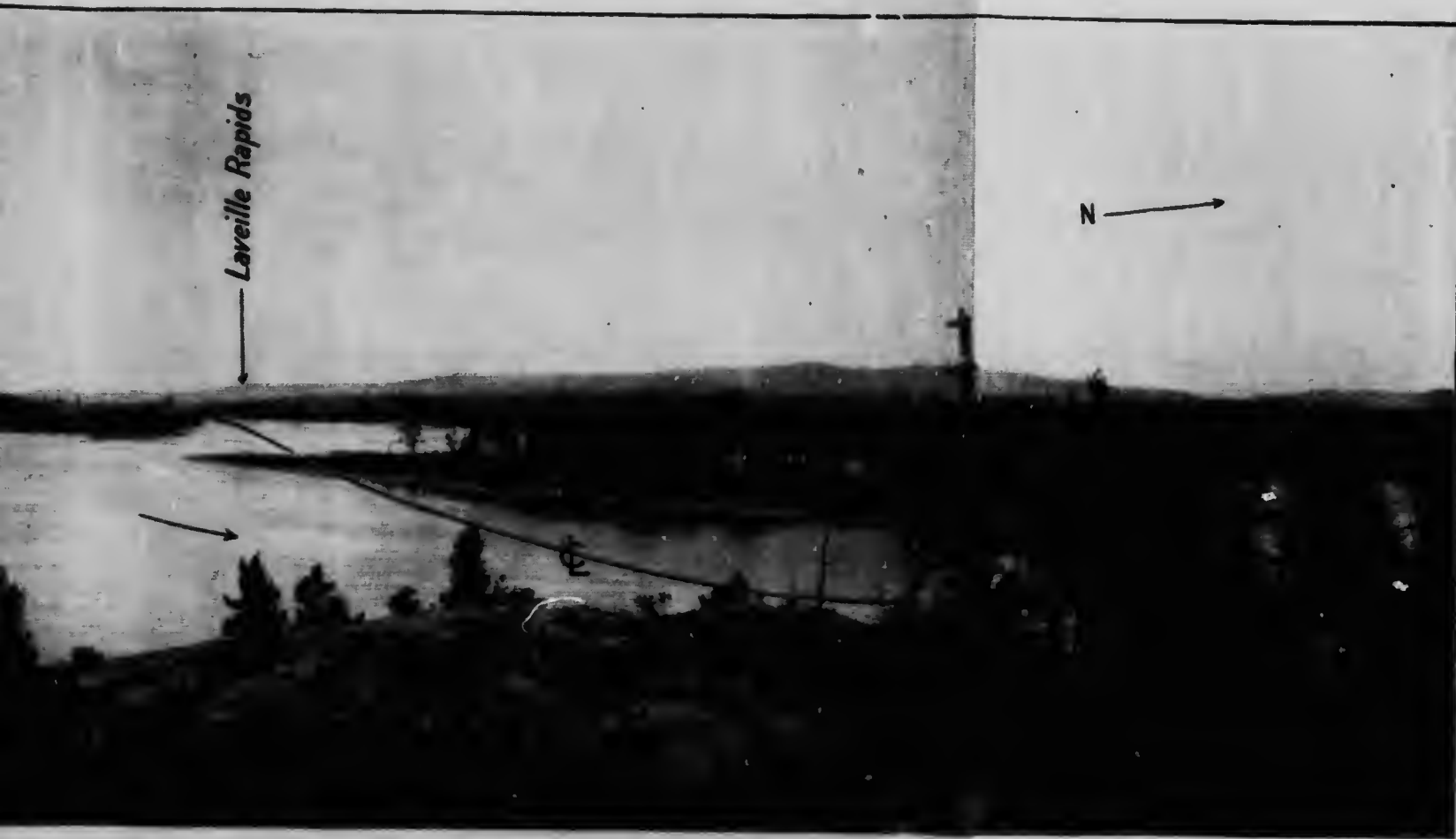


**No. 13**

**Above Deux Rivières  
Rapids.**



No. 13.—Upstream from upper entrance Deux Rivières



Leux Rivières Canal; water surface to be raised 36 feet.



No. 14

Confluence of Mattawa  
and Ottawa Rivers.





No. 14.—Confluence of Mattawa



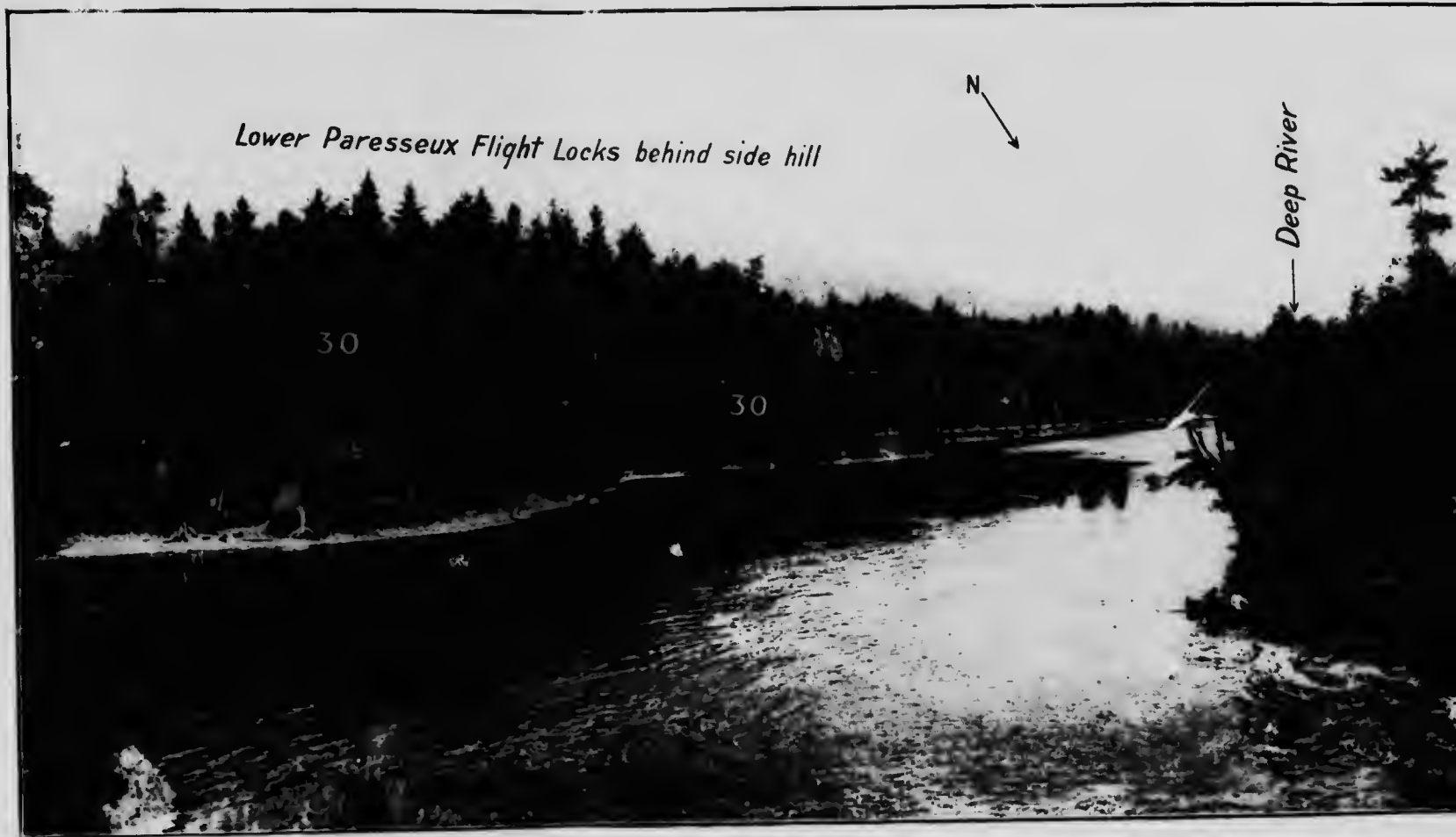
*Ottawa River*

of Mattawa and Ottawa Rivers.



No. 15

Mattawa River at  
Big Paresseux Falls.



No. 15.—The turn of the Mattawa River at the Big Paresseux Falls; water



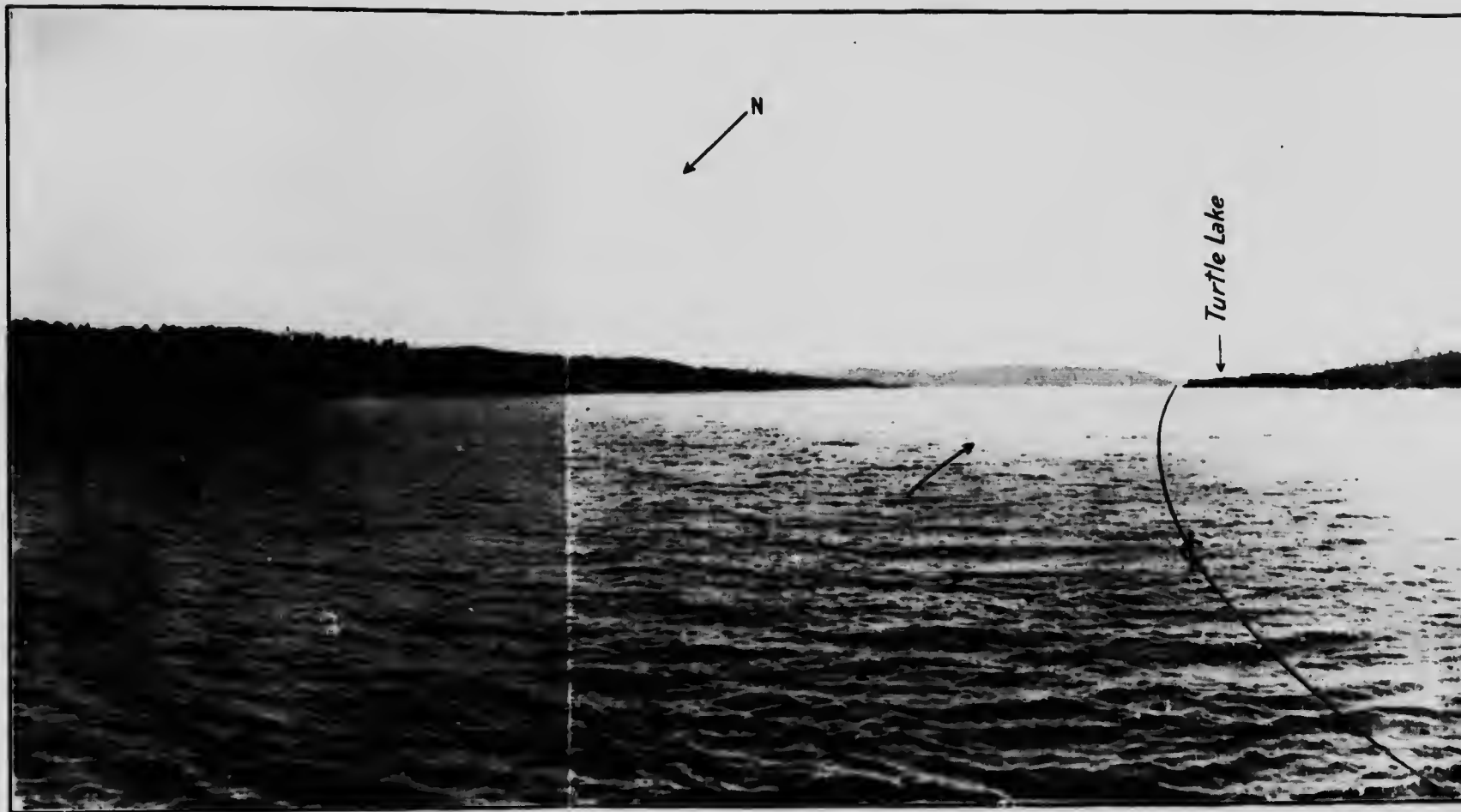
ls; water surface Deep River raised 23 feet—Canal passes behind side hill to left.



No. 16 .

West end of Trout  
Lake (summit).

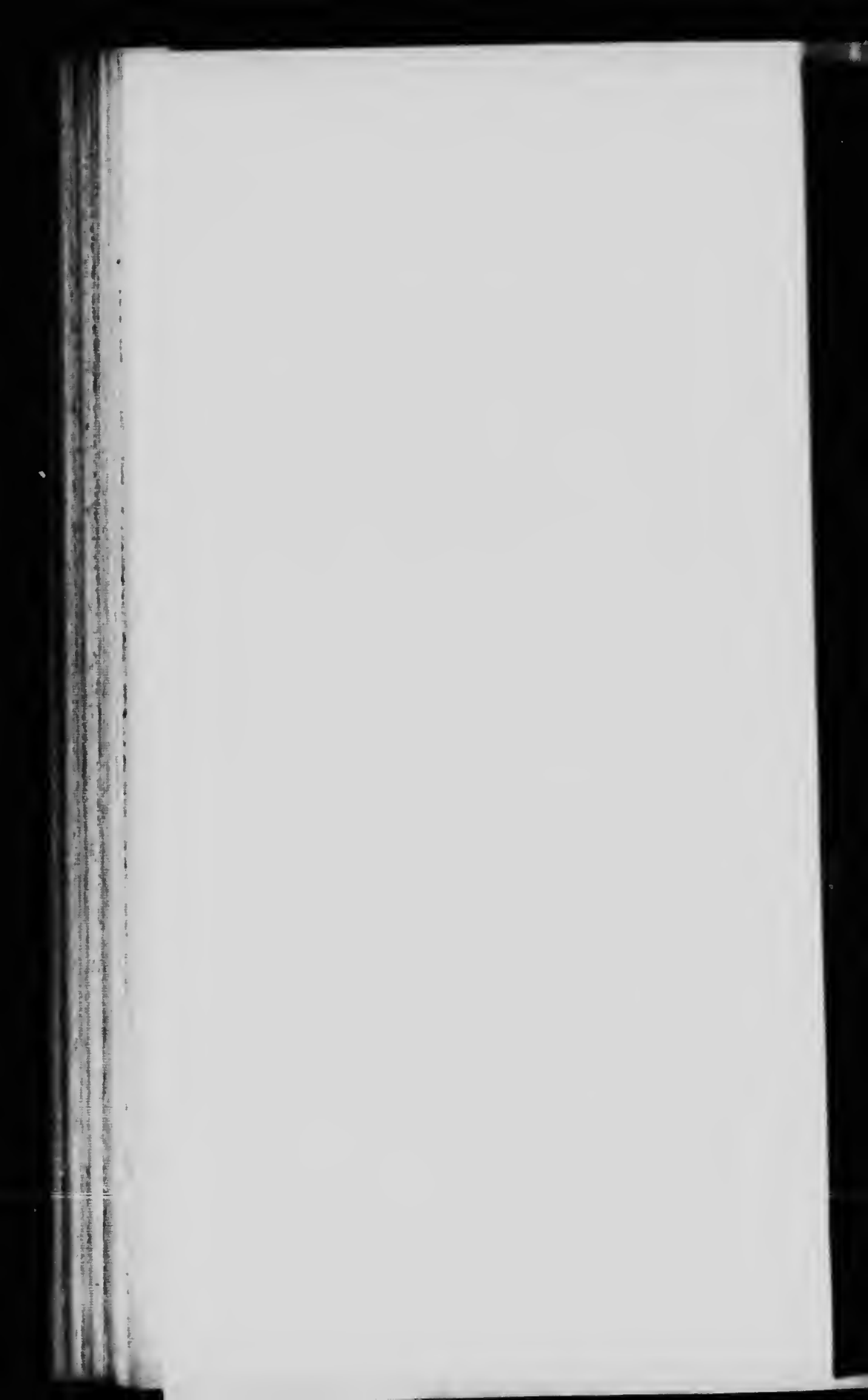




No. 16.—West end of Trout Lake on Summit ;



Summit ; water surface to be raised 14 feet.

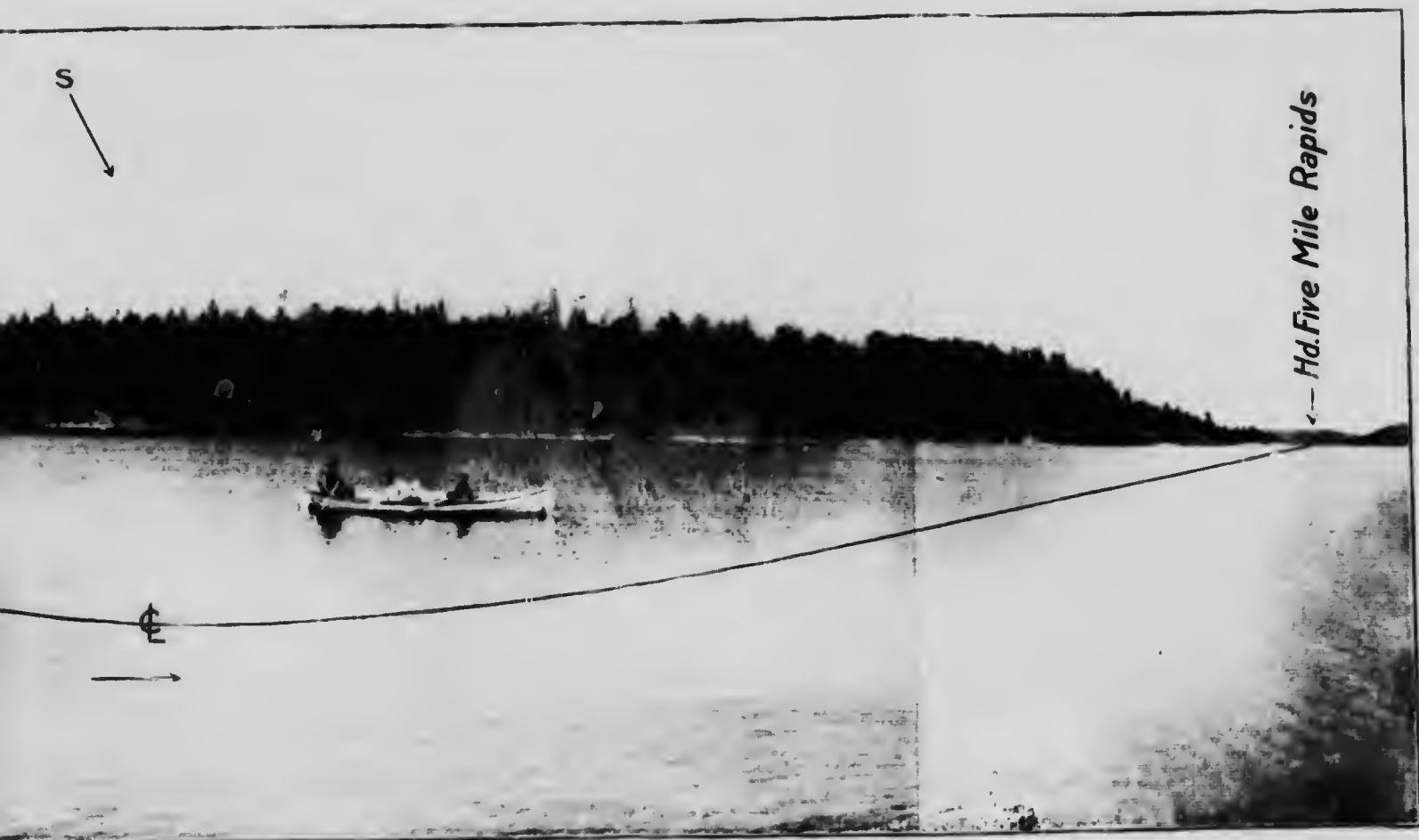


No. 17

French River, 7 miles  
below Chaudière Lock.



No. 17.—French River, 7 miles below Chaudière Lock



rière Lock ; water surface to be raised 11 feet.



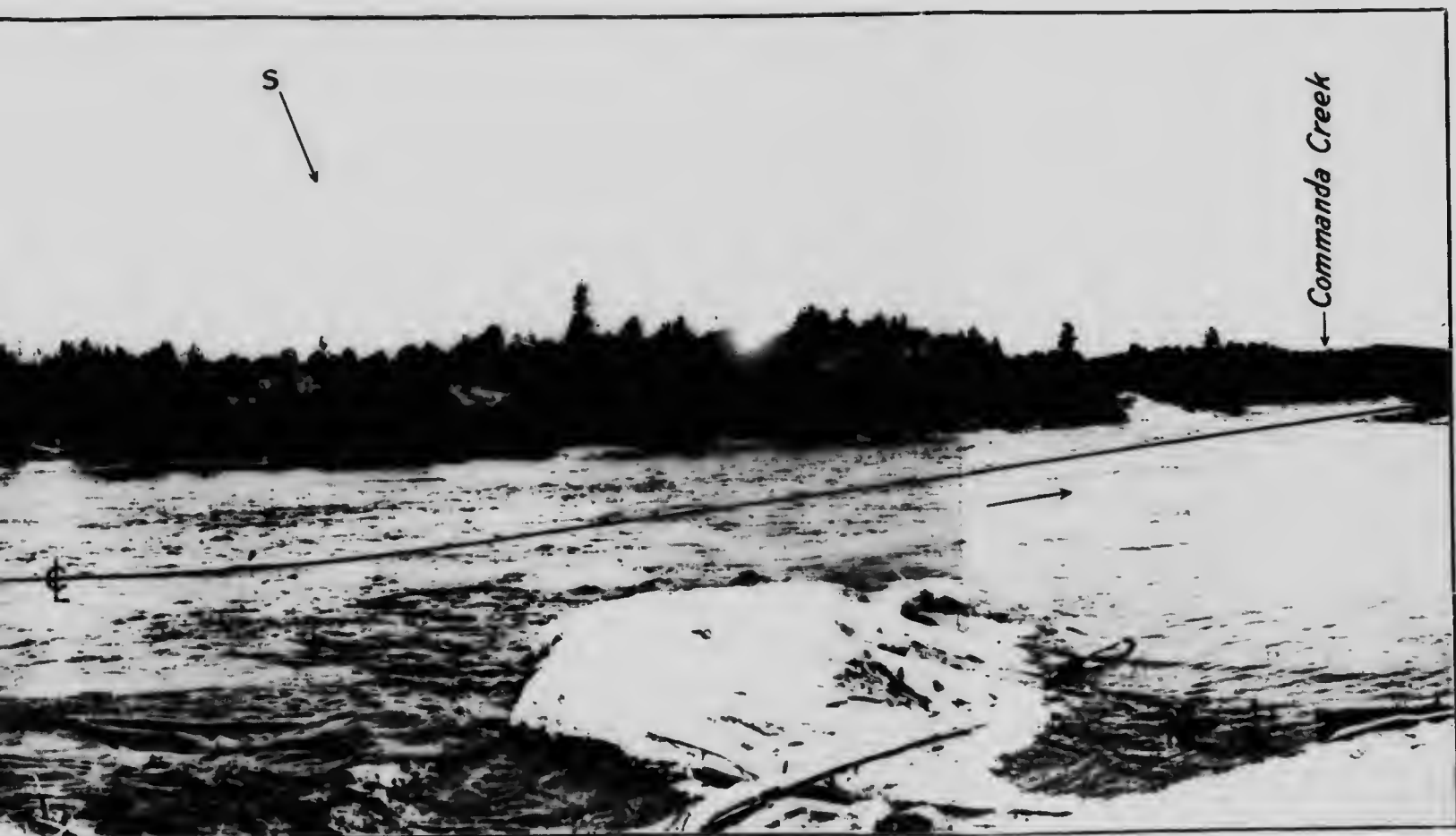
**No. 18**

**Little Pine Rapid,  
French River.**





No. 18. French River, Little Pine Rapid. First of the Five

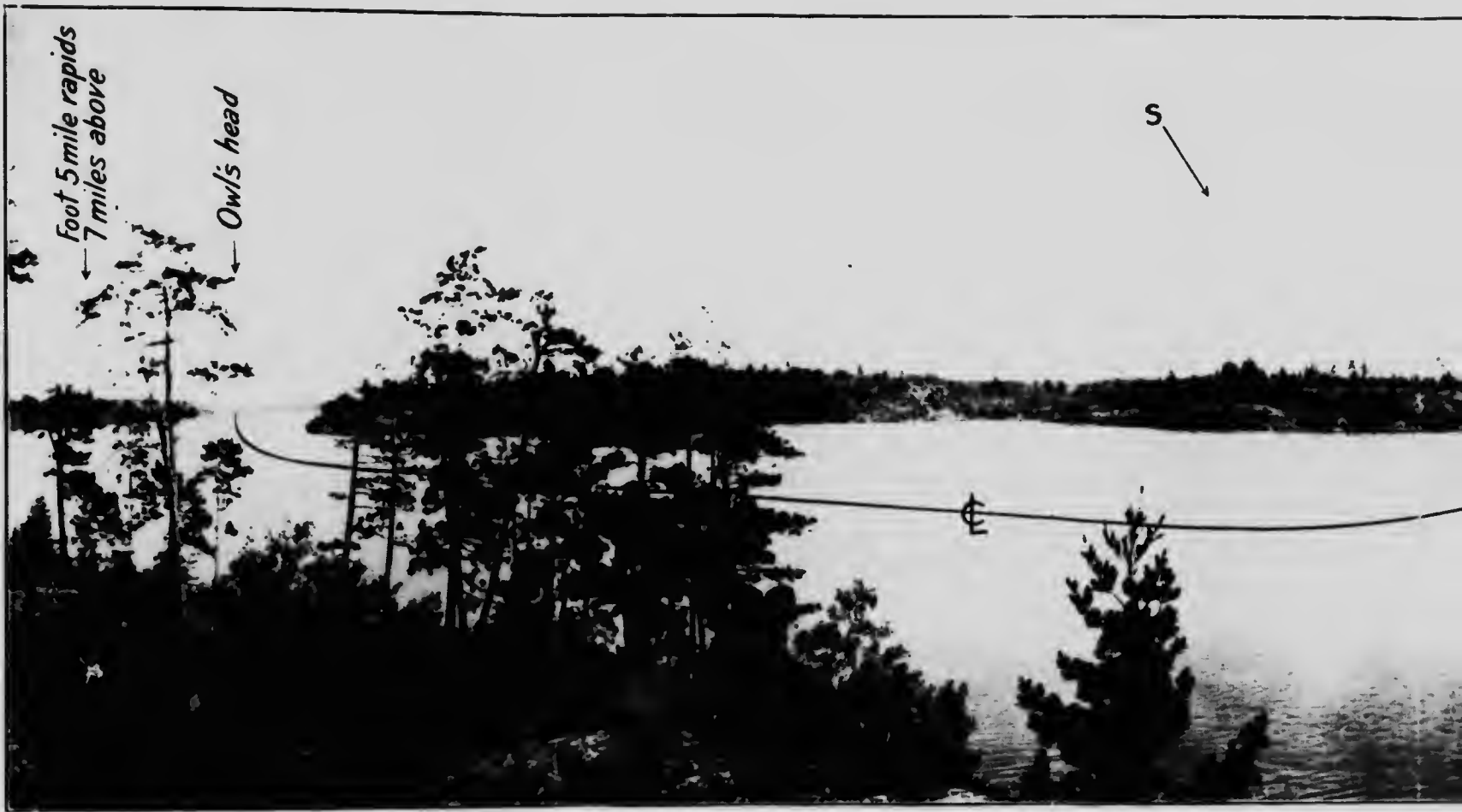


the Five Mile Rapids ; water surface to be raised 14 feet.

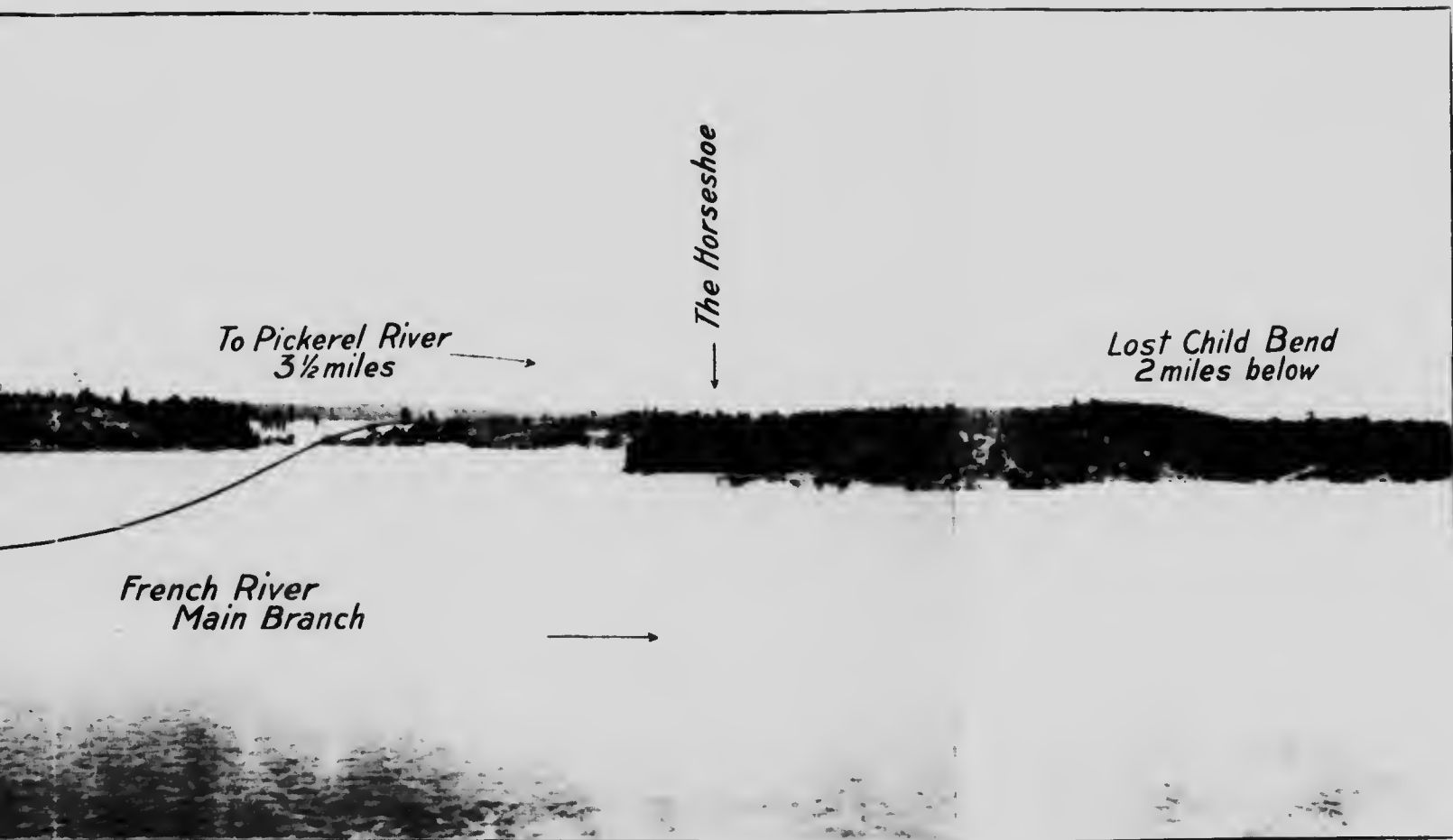
Faint, illegible text visible along the left edge of the page, likely bleed-through from the reverse side.

**No. 19**

French River looking  
towards Pickard  
River.



No. 19. French River at point where Canal leaves it to cross to Picker



to Pickerel River, 3 1/2 miles south ; water surface to be raised 6 feet.



**No. 20**

The Horseshoe  
Pickeral River.





No. 20. - The Horseshoe where the Canal line from Fr

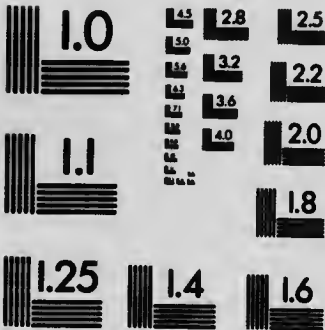


e from French River joins the Pickerel River : water surface to be raised 16 feet.



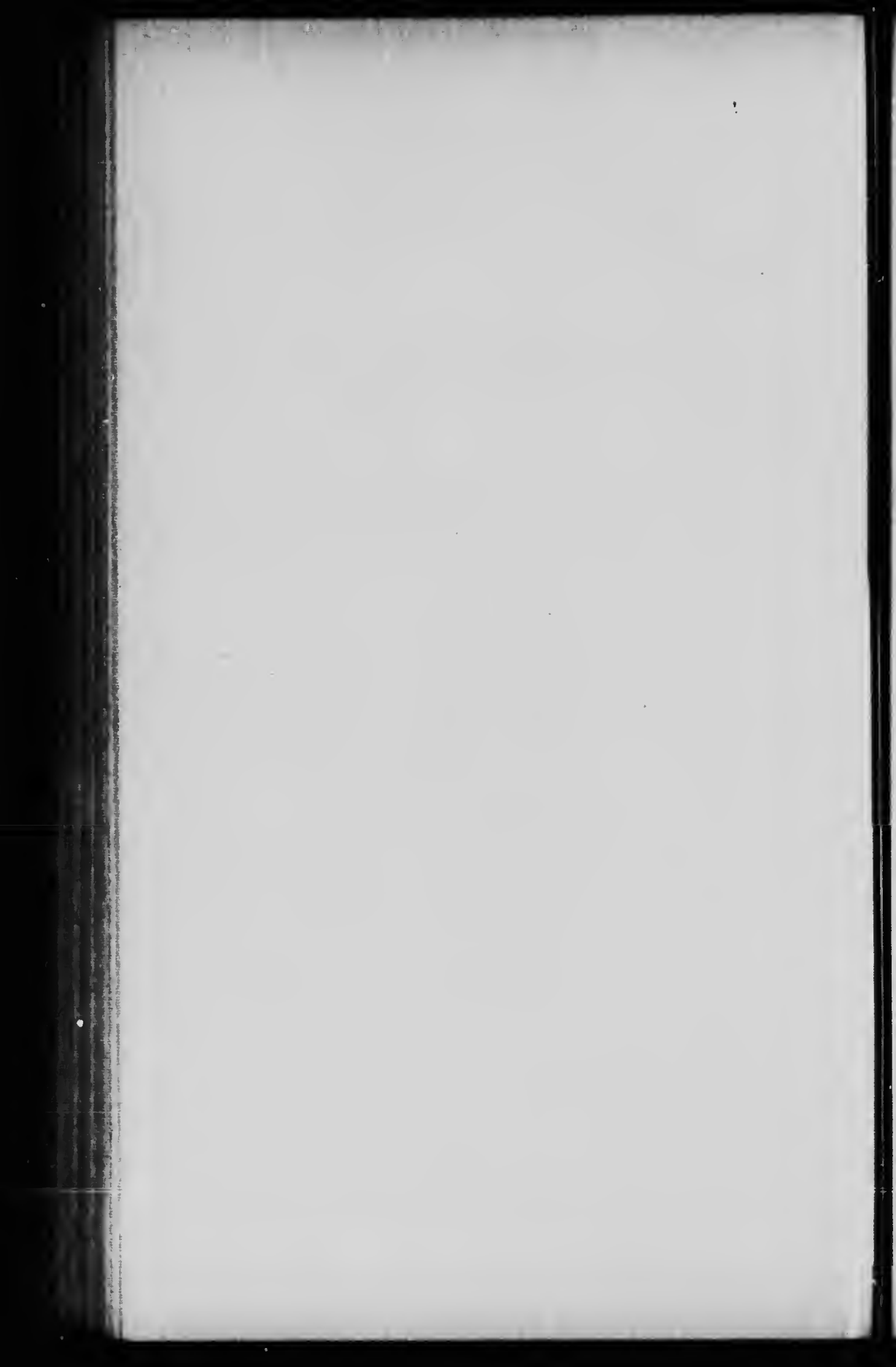
MICROCOPY RESOLUTION TEST CHART

(ANSI and ISO TEST CHART No. 2)



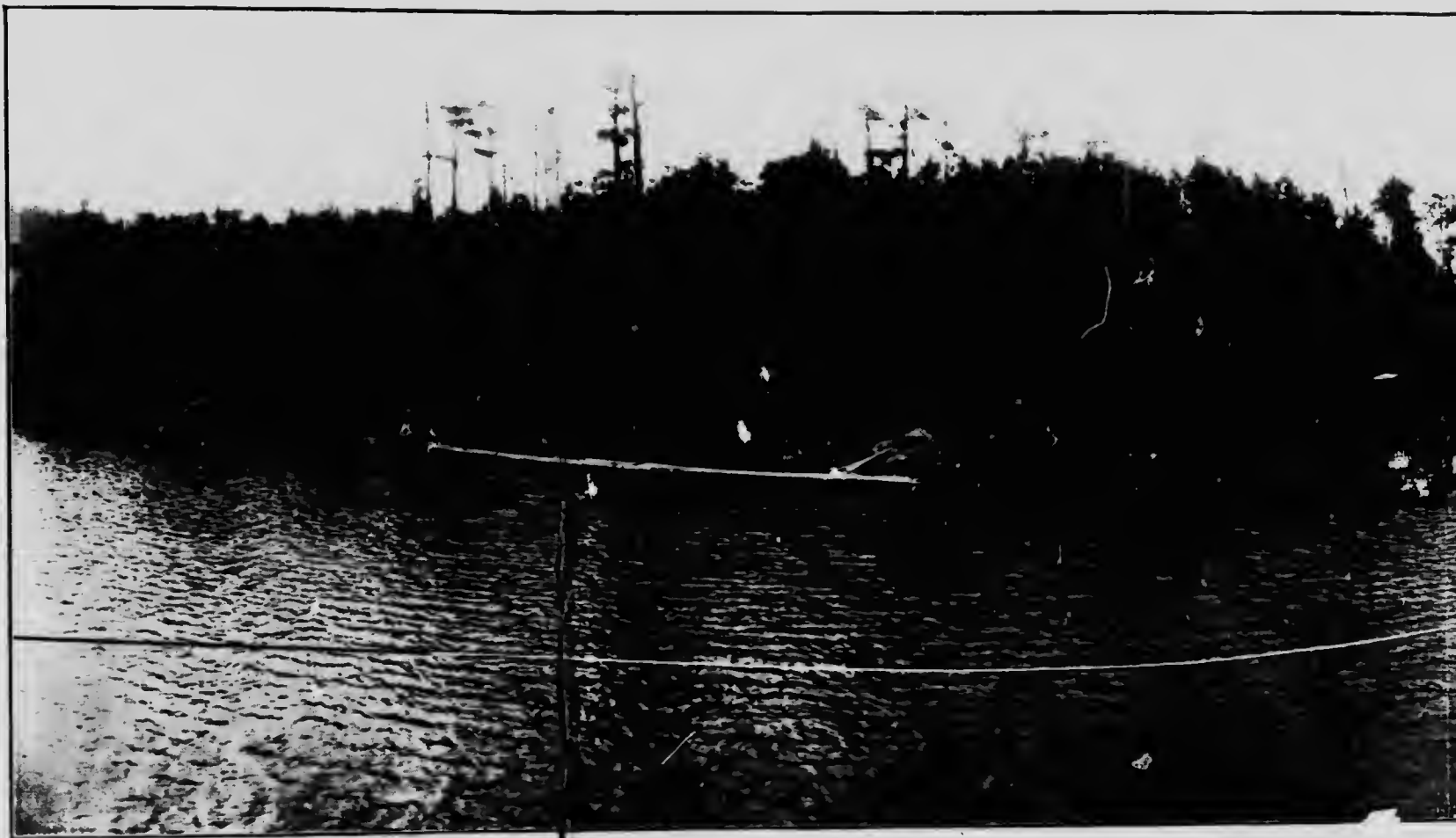
APPLIED IMAGE Inc

1653 East Main Street  
Rochester, New York 14609 USA  
(716) 482-0300 - Phone  
(716) 288-5989 - Fax

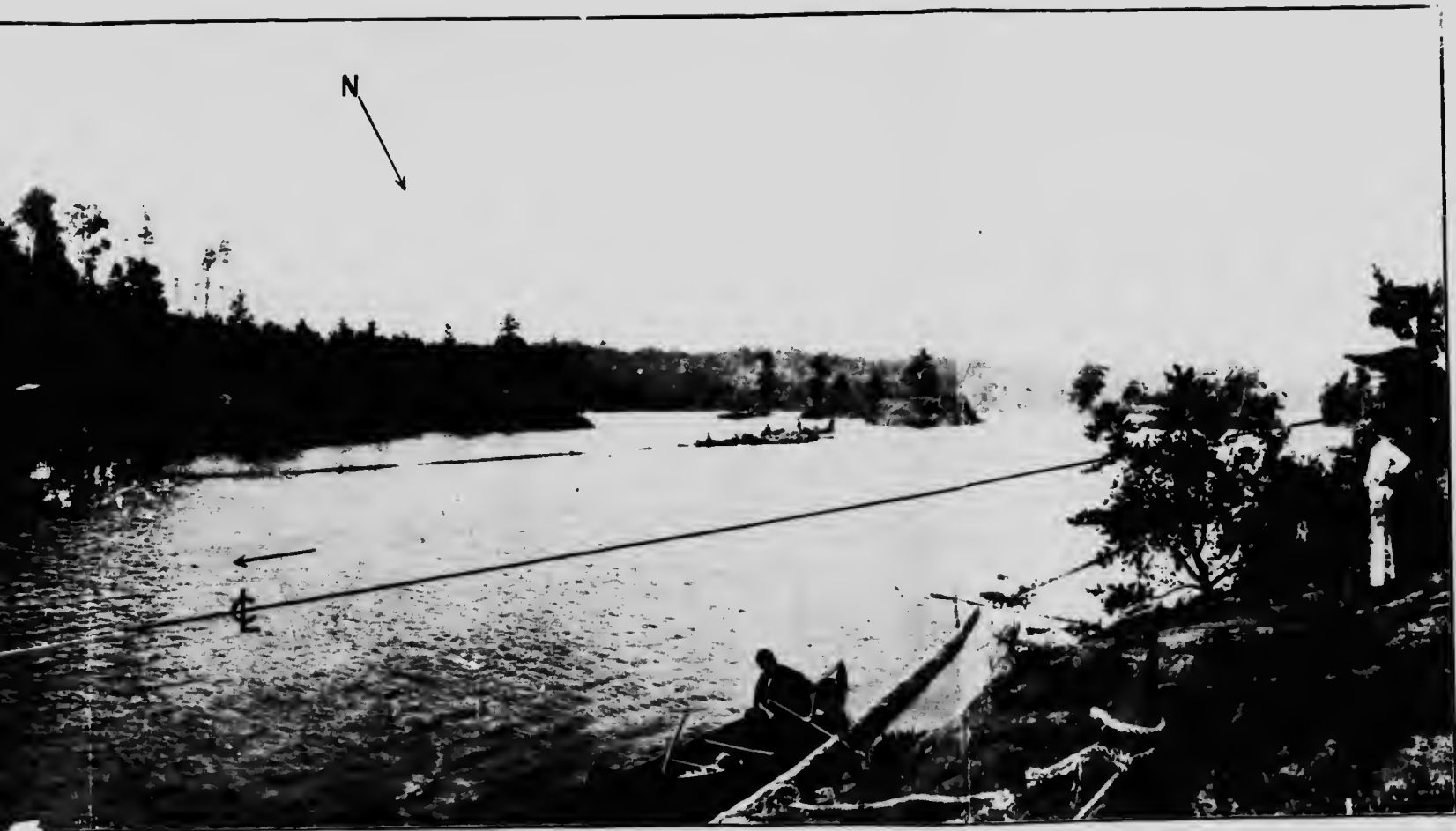


No. 21

Narrows of the  
Pickeral River below  
the Twin Islands.

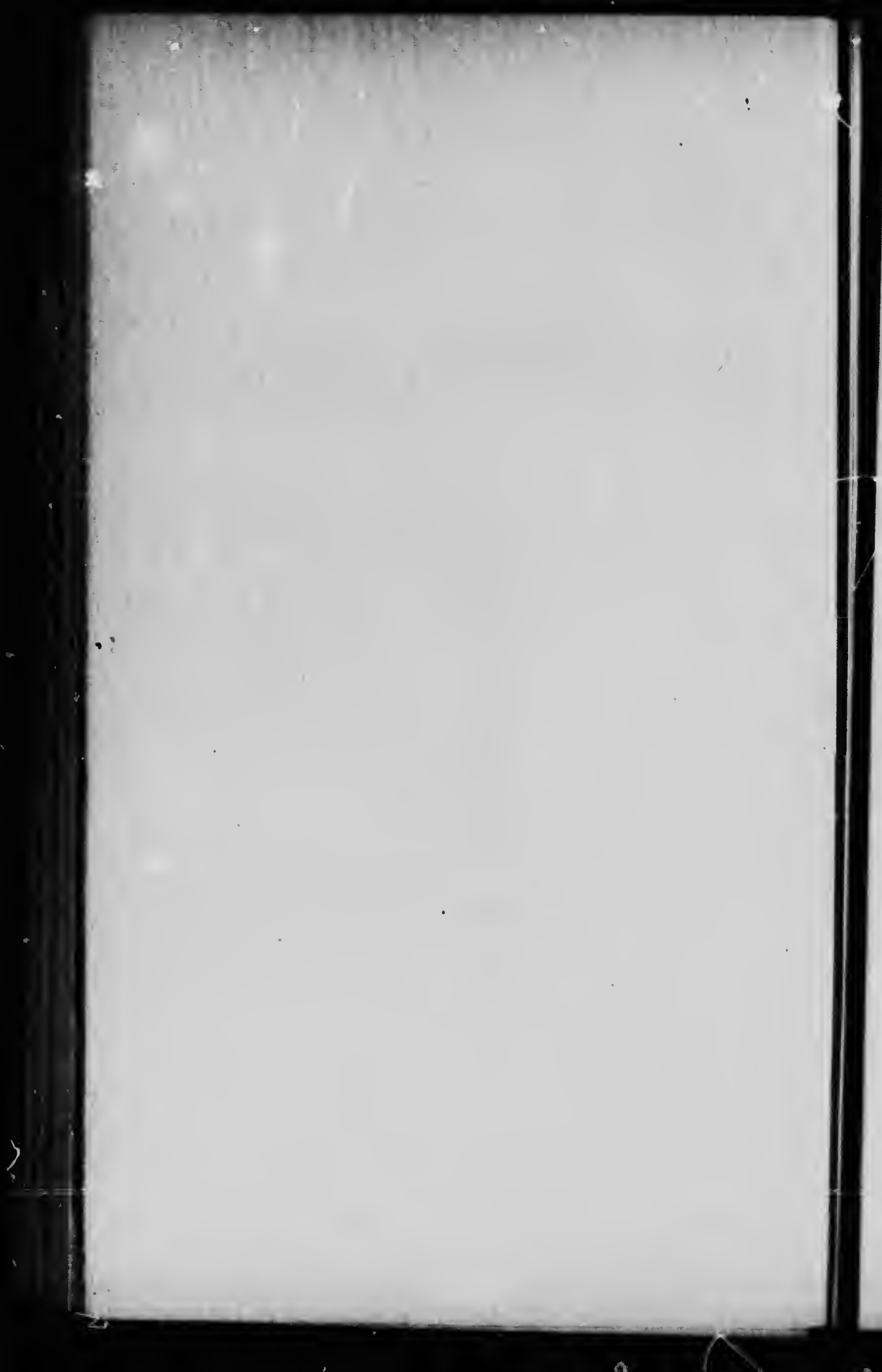


No. 21. --Narrows of the Pickrel River below the



elow the Twin Islands; water surface to be raised 16 feet.





No. 22

Pi. erel River 3 miles  
above Ox Lake.



No. 22.—Pickerel River 3 miles above Ox Lake ; a typical

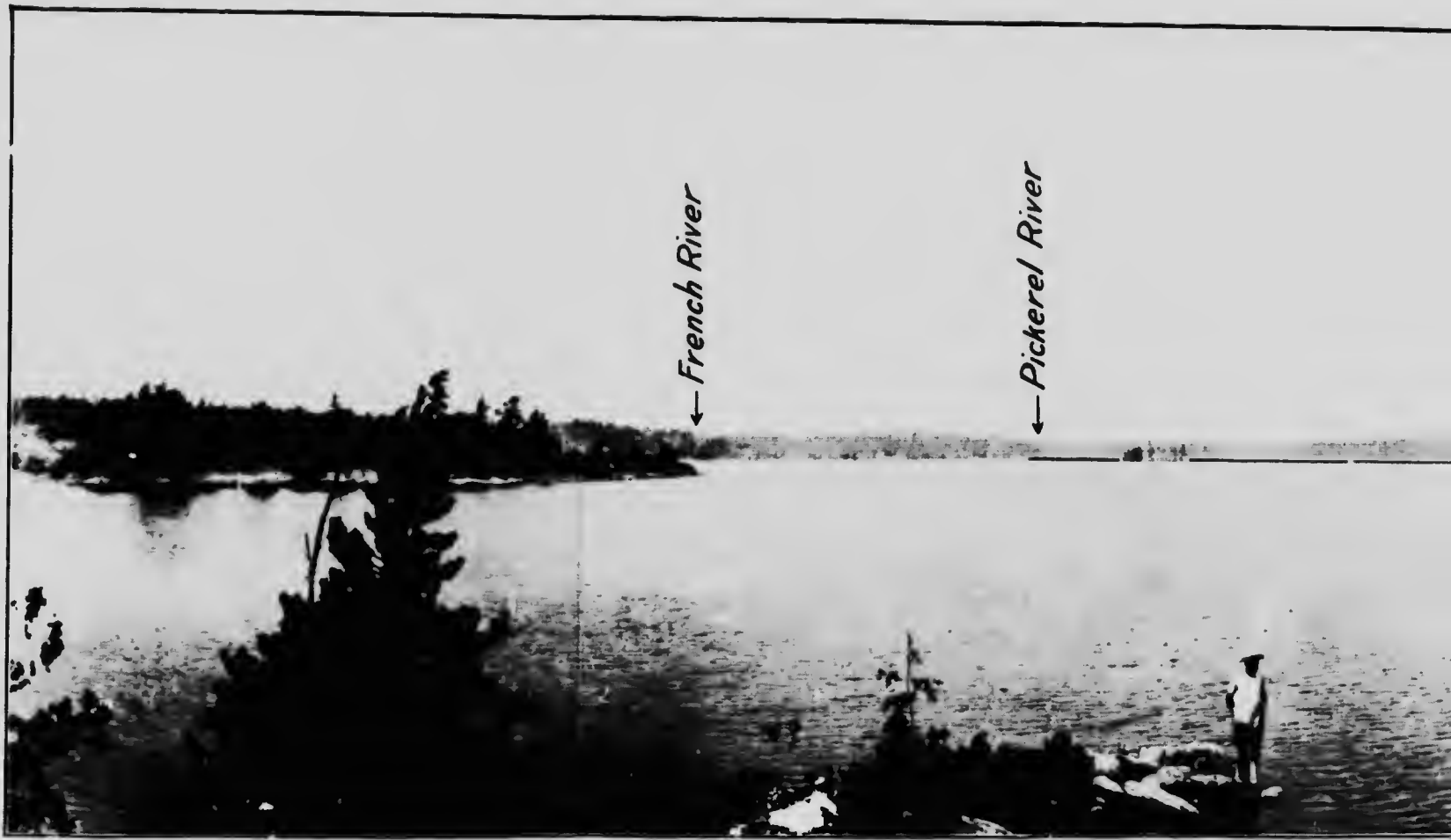


; a typical view of the River ; water surface to be raised 16 feet.

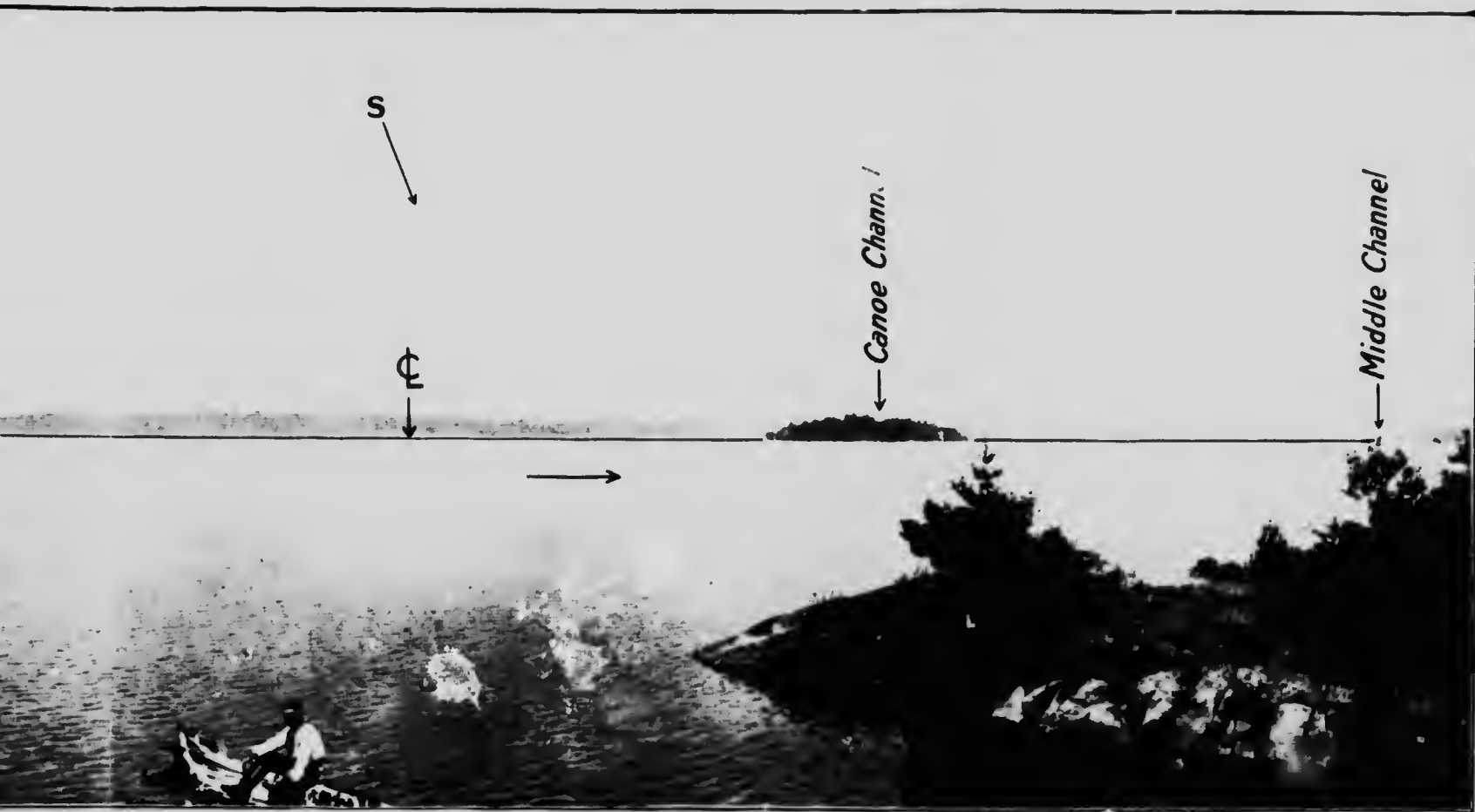


No. 23

Ox Lake.

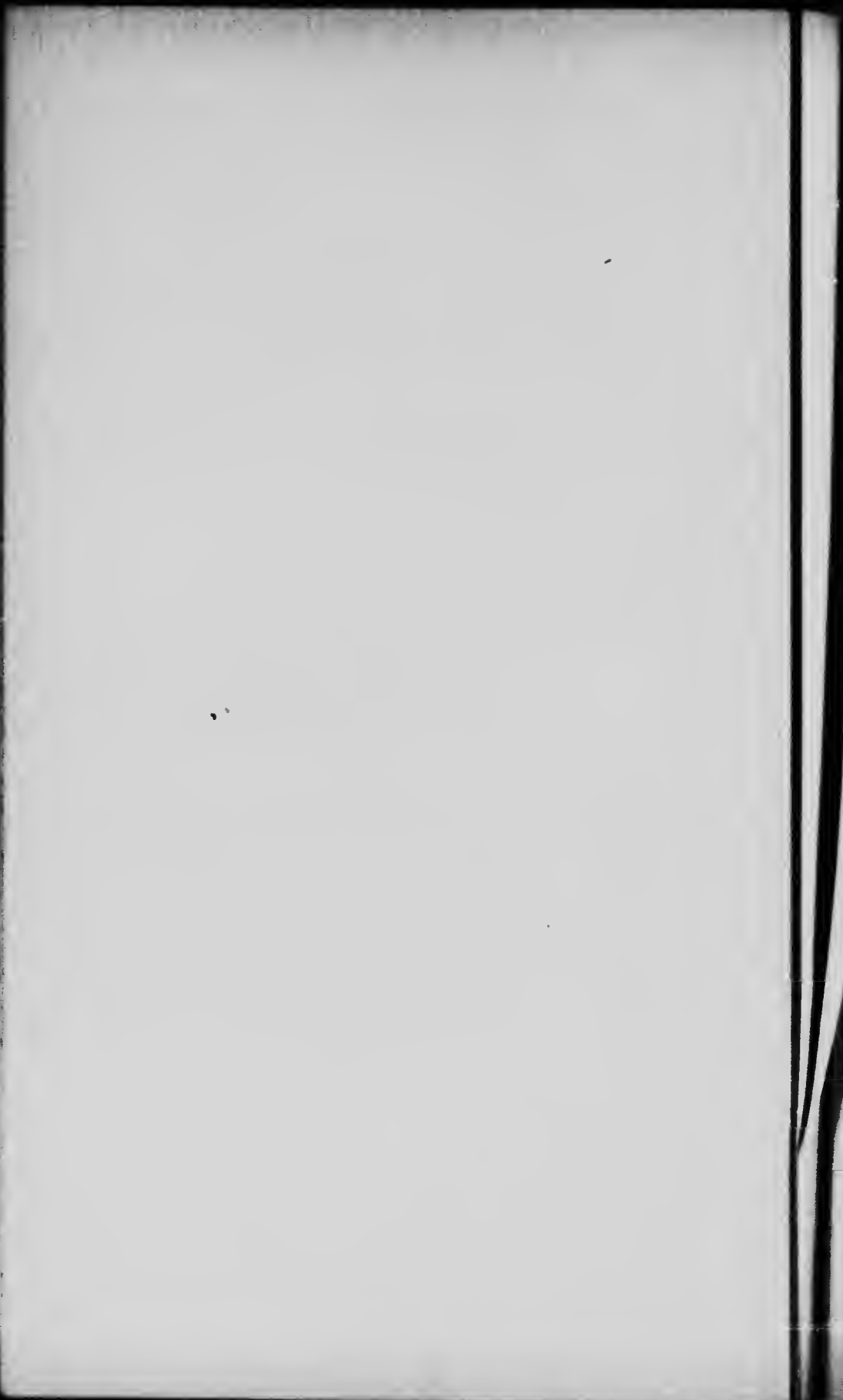


No. 23.—Ox Lake, confluence of the French and Picherel Rivers.



ch and Pickerel Rivers ; water surface to be raised 16 feet.



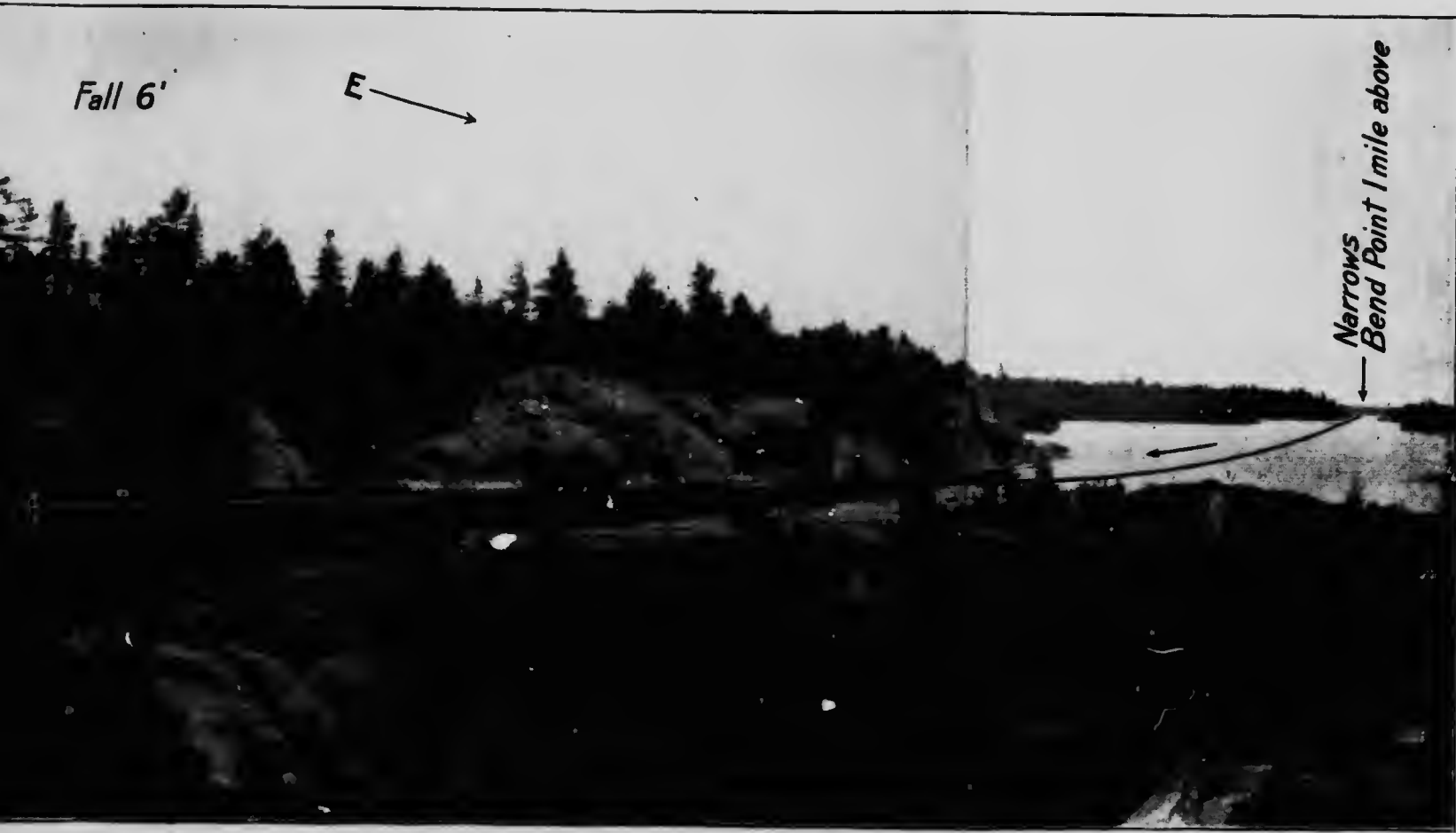


No. 24

Dalles Rapids.



No. 24.—Dalles Rapids, middle outlet of the French, Pickerel and



kerel and Wanapitei Rivers ; 1 mile above French River Village.

