

**CIHM
Microfiche
Series
(Monographs)**

**ICMH
Collection de
microfiches
(monographies)**



Canadian Institute for Historical Microreproductions / Institut canadien de microreproductions historiques

© 1998

The Ins
copy av
may be
the im
signific
checked



This item
Ce docum

10x



Technical and Bibliographic Notes / Notes techniques et bibliographiques

The Institute has attempted to obtain the best original copy available for filming. Features of this copy which may be bibliographically unique, which may alter any of the images in the reproduction, or which may significantly change the usual method of filming are checked below.

- Coloured covers / Couverture de couleur
- Covers damaged / Couverture endommagée
- Covers restored and/or laminated / Couverture restaurée et/ou pelliculée
- Cover title missing / Le titre de couverture manque
- Coloured maps / Cartes géographiques en couleur
- Coloured ink (i.e. other than blue or black) / Encre de couleur (i.e. autre que bleue ou noire)
- Coloured plates and/or illustrations / Planches et/ou illustrations en couleur
- Bound with other material / Relié avec d'autres documents
- Only edition available / Seule édition disponible
- Tight binding may cause shadows or distortion along interior margin / La reliure serrée peut causer de l'ombre ou de la distorsion le long de la marge intérieure.
- Blank leaves added during restorations may appear within the text. Whenever possible, these have been omitted from filming / Il se peut que certaines pages blanches ajoutées lors d'une restauration apparaissent dans le texte, mais, lorsque cela était possible, ces pages n'ont pas été filmées.
- Additional comments / Commentaires supplémentaires:

L'Institut a microfilmé le meilleur exemplaire qu'il lui a été possible de se procurer. Les détails de cet exemplaire qui sont peut-être uniques du point de vue bibliographique, qui peuvent modifier une image reproduite, ou qui peuvent exiger une modification dans la méthode normale de filmage sont indiqués ci-dessous.

- Coloured pages / Pages de couleur
- Pages damaged / Pages endommagées
- Pages restored and/or laminated / Pages restaurées et/ou pelliculées
- Pages discoloured, stained or foxed / Pages décolorées, tachetées ou piquées
- Pages detached / Pages détachées
- Showthrough / Transparence
- Quality of print varies / Qualité inégale de l'impression
- Includes supplementary material / Comprend du matériel supplémentaire
- Pages wholly or partially obscured by errata slips, tissues, etc., have been refilmed to ensure the best possible image / Les pages totalement ou partiellement obscurcies par un feuillet d'errata, une pelure, etc., ont été filmées à nouveau de façon à obtenir la meilleure image possible.
- Opposing pages with varying colouration or discolourations are filmed twice to ensure the best possible image / Les pages s'opposant ayant des colorations variables ou des décolorations sont filmées deux fois afin d'obtenir la meilleure image possible.

This item is filmed at the reduction ratio checked below /
Ce document est filmé au taux de réduction indiqué ci-dessous.

10x	14x	18x	22x	26x	30x
<input type="checkbox"/>	<input type="checkbox"/>	<input checked="" type="checkbox"/>	<input type="checkbox"/>	<input type="checkbox"/>	<input type="checkbox"/>
12x	16x	20x	24x	28x	32x

The copy filmed here has been reproduced thanks to the generosity of:

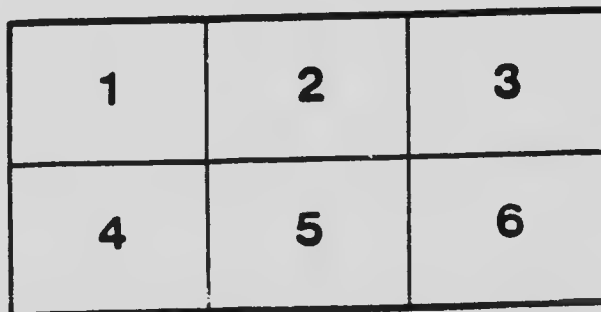
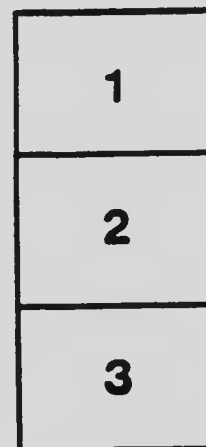
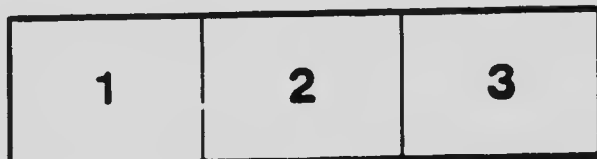
National Library of Canada

The images appearing here are the best quality possible considering the condition and legibility of the original copy and in keeping with the filming contract specifications.

Original copies in printed paper covers are filmed beginning with the front cover and ending on the last page with a printed or illustrated impression, or the back cover when appropriate. All other original copies are filmed beginning on the first page with a printed or illustrated impression, and ending on the last page with a printed or illustrated impression.

The last recorded frame on each microfiche shall contain the symbol \rightarrow (meaning "CONTINUED"), or the symbol ∇ (meaning "END"), whichever applies.

Maps, plates, charts, etc., may be filmed at different reduction ratios. Those too large to be entirely included in one exposure are filmed beginning in the upper left hand corner, left to right and top to bottom, as many frames as required. The following diagrams illustrate the method:



L'exemplaire filmé fut reproduit grâce à la générosité de:

Bibliothèque nationale du Canada

Les images suivantes ont été reproduites avec le plus grand soin, compte tenu de la condition et de la netteté de l'exemplaire filmé, et en conformité avec les conditions du contrat de filmage.

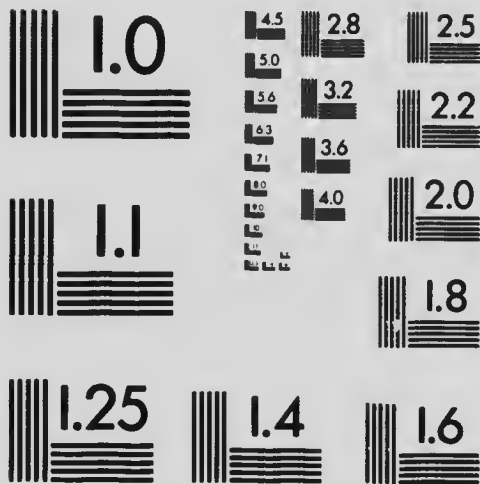
Les exemplaires originaux dont la couverture en papier est imprimée sont filmés en commençant par le premier plat et en terminant soit par la dernière page qui comporte une empreinte d'impression ou d'illustration, soit par le second plat, selon le cas. Tous les autres exemplaires originaux sont filmés en commençant par la première page qui comporte une empreinte d'impression ou d'illustration et en terminant par la dernière page qui comporte une telle empreinte.

Un des symboles suivants apparaîtra sur la dernière image de chaque microfiche, selon le cas: le symbole \rightarrow signifie "A SUIVRE", le symbole ∇ signifie "FIN".

Les cartes, planches, tableaux, etc., peuvent être filmés à des taux de réduction différents. Lorsque le document est trop grand pour être reproduit en un seul cliché, il est filmé à partir de l'angle supérieur gauche, de gauche à droite, et de haut en bas, en prenant le nombre d'images nécessaire. Les diagrammes suivants illustrent la méthode.

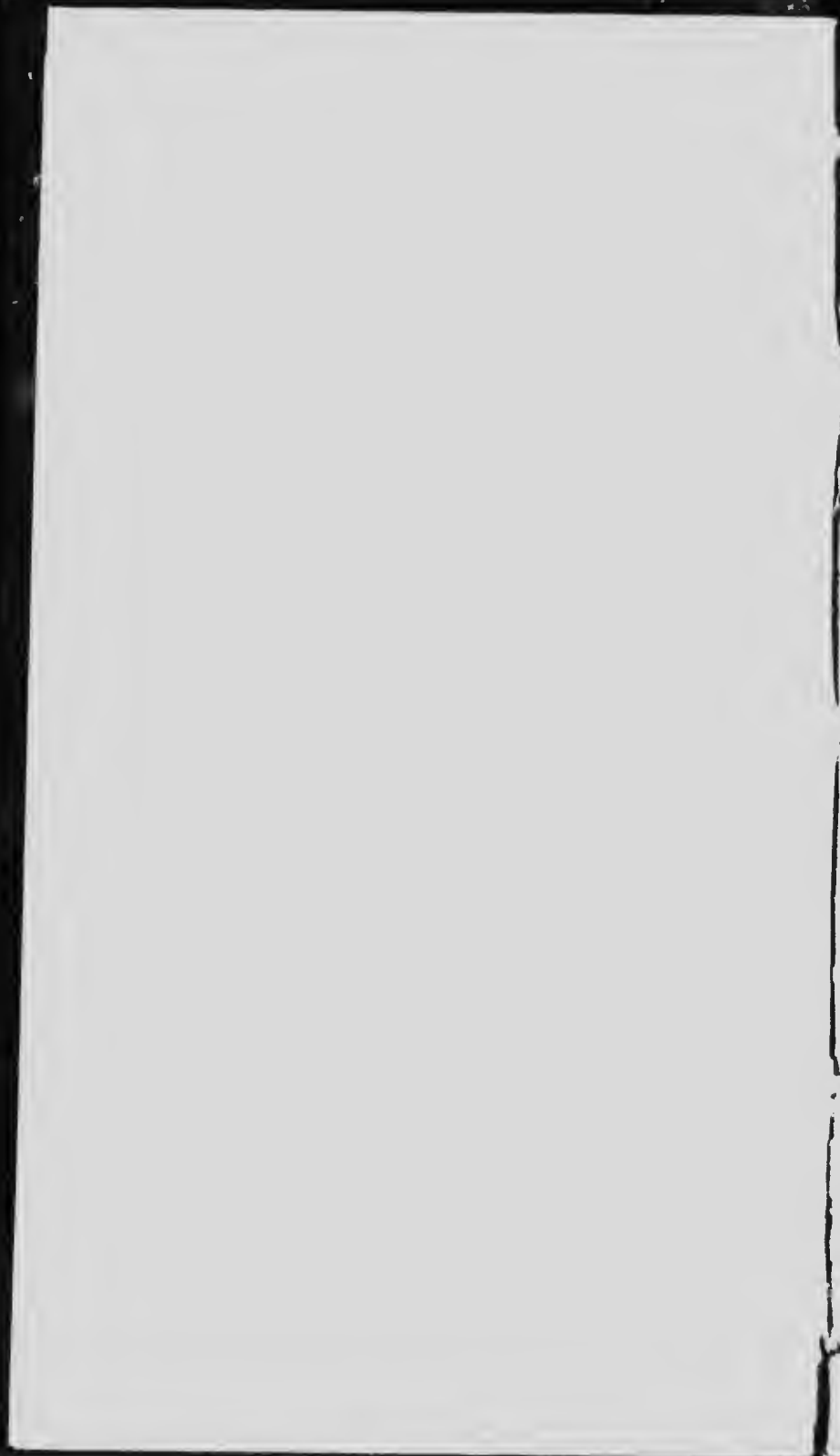
MICROCOPY RESOLUTION TEST CHART

(ANSI and ISO TEST CHART No. 2)



APPLIED IMAGE Inc

1653 East Main Street
Rochester, New York 14609 USA
(716) 482 - 0300 - Phone
(716) 288 - 5989 - Fax

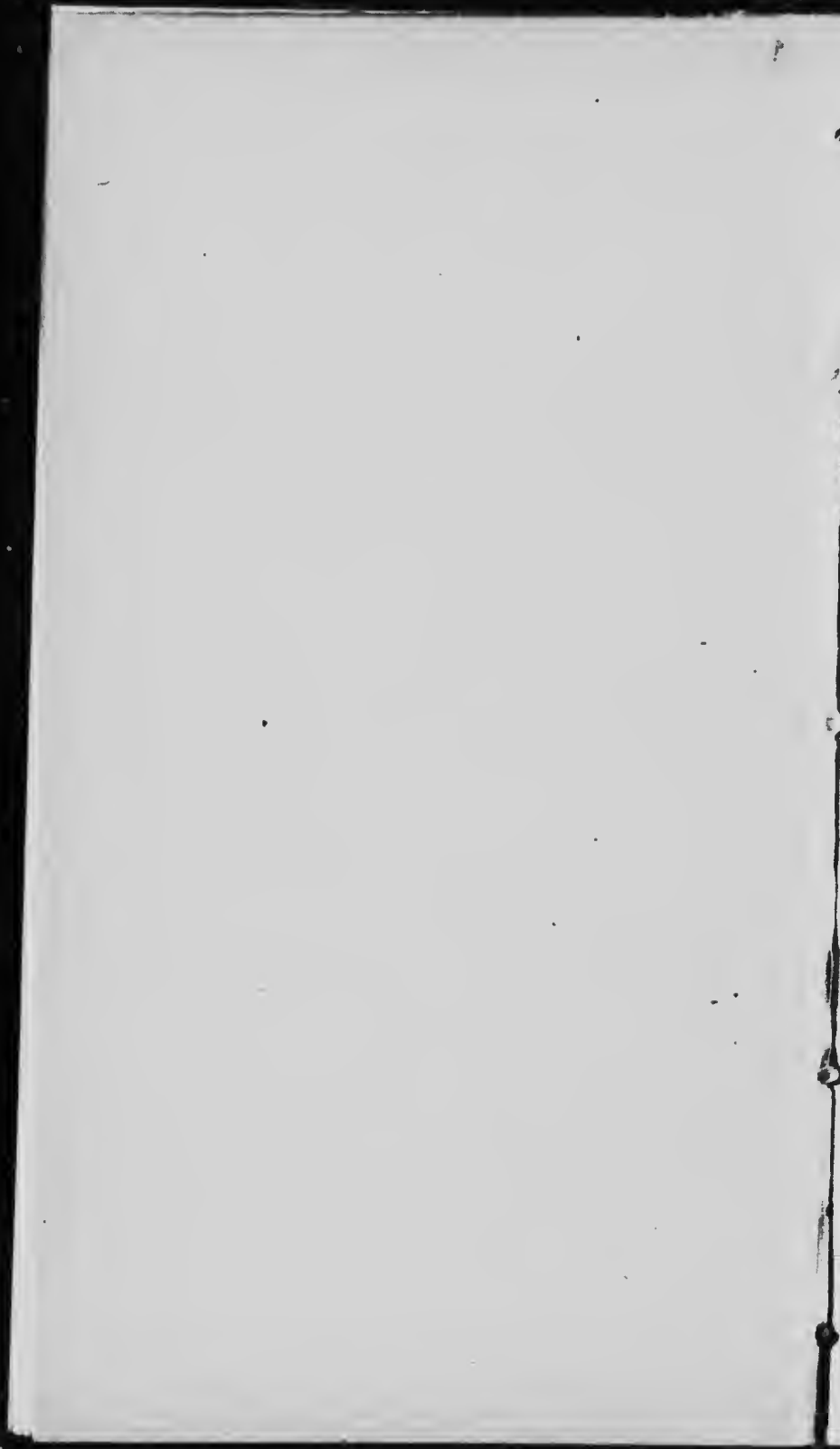




hemong
Park

HOTEL and
SUMMER
RESORT





A 5.

*In the
"Kawartha Lakes Region"
of Ontario, Canada*



Chemong Park

Hotel and



Summer Resort

CHEMONG LAKE

Bridgenorth P.O., Ontario, Canada

V-5 201
207
215
220
225

Kawartha Lakes

ADDRESS

GEO. H. BROWN

PROPRIETOR

BRIDGENORTH, ONTARIO,

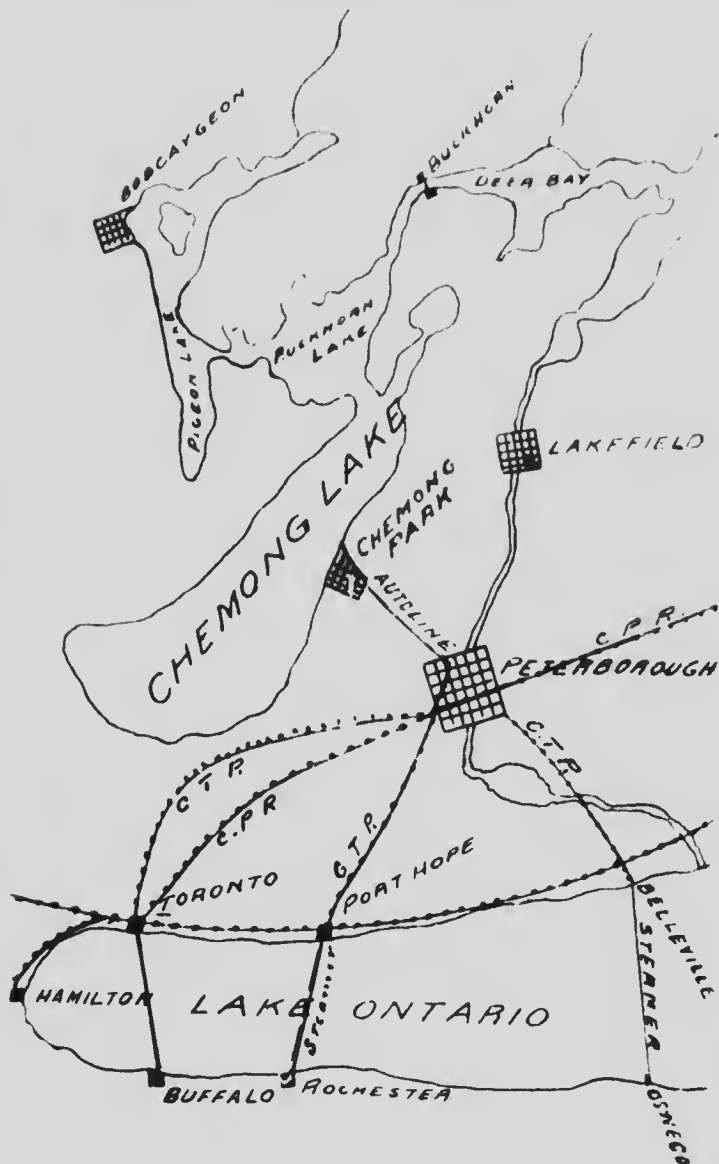
CANADA

Chemong Park

SUMMER RESORT

5000
1000
FC
200
200

KAWARTHA LAKES







ARE you thinking of a holiday outing this summer for yourself or family?

If so, why not consider what "Chemong Park" offers you for such a vacation.

This little booklet tells of this charming spot in Kawartha Lakes Region of Ontario. It will interest you to know something of what so many have found in one of the most delightful private summer resting places in Canada.

Business and professional men, especially, can quietly rest, recreate and renew their health here, "far from the madding crowds," but within quick and easy access to the main lines of travel, which enables them to run into the city when business demands.



NEAR TO NATURE'S HEART.

A favorite spot for the languid tourist and tired worker to stay for months during the summer season and find his lassitude disappear with profit and pleasure to physical and mental vigor.

Chemong Park

THE situation of Chemong Park is well up on the high lands overlooking the shores of Chemong Lake—one of the most interesting sheets of water in Canada, surrounded with an infinite variety of scenic beauty—ten miles long by one in width.

The elevation of Chemong Park is 652 feet above Lake Ontario, and the cool air, rich with the resinous fragrance of the northern pine, exerts a tonic influence in the renewal of health.



A BIT OF SHORE AND LAKE SCENERY.

Chemong Park is distant six miles from Peterborough, a thriving city of 14,000, and has all the advantages of daily mail, etc.

The hotel is in the centre of a beautiful park of about 270 acres, the trees of which are young pine, noted for their sweet smell as well as for their health-giving qualities.

Connected with the hotel is a spring of mineral water, possessing all the qualities of the most noted mineral springs of other lands. It is regarded by physicians as possessing restorative qualities, composed of sulphur, iron and calcium

three of the most noted minerals for health-giving effects known to medical men.

Many physicians have spoken in the highest praise of the benefits to be derived from a sojourn in this delightful spot, especially those subject to hay fever and all similar disorders.

The heat is never felt as the ground rises high above the water and gets the benefit of every breeze that blows—no matter from what quarter.



Kawartha Lakes

CONNECTING with Chemong Lake are a chain of lakes known as "Kawartha Lakes"—the most picturesque and romantic to be found on the continent.

From Chemong Park the Kawartha Lakes covers a distance of seventy miles, with a good through steamboat service from Chemong Park. It is tapped by rail at Lakefield, Lindsay, Fenelon Falls, and Cobocok. For a few weeks' outing in quest of rest and health, the Kawartha Lakes are the ideal. So varied in environment no person can go over the seventy miles without rare enjoyment. Through the altitude of these lakes, the air is laden with the vitalizing ozone, which renews the physical frame, restores the nervous system, invigorates the mental faculties, and gives a new lease of bright, cheerful and happy life.

For the angler, these lakes are unsurpassed. For the hay fever sufferer they are a haven of heaven given relief and security. For cruising, a trip over the Lakes makes a delightful holiday. They possess a beauty of their own, a wildness, a variety and a surprise. The exercise of paddling produces a physical vigor and a mental vitality that tones every fibre of your body and sends you home as fit as a fiddle. Take the wate. at Chemong Park and go through this chain of lakes, and you return to the hotel heartily invoking a blessing upon the region that, in the musical language of the Mississagua

Indians, is referred to as Kawartha gawmig papenadah mowinakeen, the Bright Waters and Happy Lands.

To the north west is the narrows which lead to Pigeon Lake, Buckhorn Lake and Falls, Burleigh, Stony Lake, Katchewanook and Lakefield. North-west from Pigeon Lake a few miles brings you to Bobcaygeon. Passing through the locks the tourist enters Sturgeon Lake, on the east side of which is Sturgeon Point, which is also a noted resort for tourists. A few miles north is Fenelon Falls and Cameron and Balsam Lakes. Following the Lindsay River, a few miles leads to the Town of Lindsay, which is only three hours' ride from Toronto.



Peterborough

THIS city is an important railway point and industrial centre, with a population of nearly fourteen thousand people. It is situated on the Otonabee River at a point where it has a fall of about one hundred and fifty feet, which affords unlimited motive power for the many mills and manufactories that are located here. The country of which this is the focus is replete with scenic beauties, many pretty lakes and rivers being in the immediate vicinity, and offering much to attract the tourist, pleasure-seeker and sportsman.

CHEMONG PARK is only six miles north of Peterborough.

One of the great attractions of the town is the famous lift-lock, one of the series of the Trent Valley Canal. This lock is a stupendous work and well worthy of an inspection by tourists.





nd
of
is
ere
et,
he
ed
is
es
nd
e-

of

e
at
k



Copyright 1911 by the American Museum of Natural History, New York

Chemong Park Hotel

IS a new and modern brick building, having been in operation only a few years. It is situated about one hundred yards from the lake, on rising ground; the park is laid out in avenues, and is the popular resort for many miles around.

A special feature is the cuisine. It caters to the wants of a fastidious class.

The rooms are large and airy, and well furnished, while the table is always supplied with every luxury of the season.

In the hotel, there is a large Ball Room; supplied with piano, where dancing, ping-pong and other indoor amusements may be enjoyed.

Telephone in connection.

ATTRACTIONS

In the park there is a large Pavilion, where those who care to do so may indulge in the mazy waltz or tripping the "light fantastic."

BATHING—No more charming place is to be found for bathing, the shore being a beautiful sandy bottom, and only 5 feet deep at a distance of 100 feet from the shore. It is therefore absolutely safe for children and those learning to swim. Bathing houses for dressing, and bathing suits provided.

GOLF—The golf links connected with the hotel is one of the finest in the country, affording the best of facilities for this marvellously fascinating game.

BASE BALL, ETC.—In the park there are base ball, lacrosse, football and cricket grounds for the use of the patrons of the hotel.

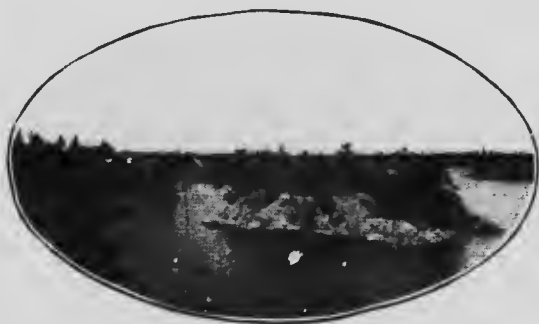
FLOATING BRIDGE—There has recently been constructed an immense floating bridge over Chemong Lake, being the only structure of the kind in the world.

FISHING AND HUNTING—If there is one thing more than another Chemong is noted for, it is its fishing and hunting grounds. It has positively no equal in Canada. Bass and Maskinonge abound in all parts of the lake. "The string of beauties" shown on page eleven is an ordinary catch along the shores of the Park. In the fall and winter gunning is the popular pastime, rabbits, partridge, ducks, etc., being the favorite game.

Fishing tackle, boats, etc., kept on hand for the use of guests.

TERMS :—\$8.00 to \$10.00 per week, or \$1.50 to \$2.50 per day. Special rates for families. Dogs \$1.00 per week.

Further information cheerfully supplied on application to **GEO. H. BROWN**, Proprietor, Bridgenorth P.O., Ontario, Canada.



To Reach Chemong

THE accompanying sketch shows the principal railway and steamboat connections with Chemong Park.

A bus line runs twice each day between the hotel and the Post Office corner, Peterborough (six miles), so that every facility is afforded of ingress and egress. It is expected that a line of electric street cars between Peterborough and Chemong Park will be in operation this season.

Peterborough is on the main line of the C.P.R. and the Midland Division of the Grand Trunk. It is less than three hours' run from Toronto.

Steamers connect daily with Indian Village, Buckhorn, Burleigh, Bobcaygeon, Sturgeon Point, Fenelon Falls, Lindsay and Lakefield.

MAIL.—Bridgenorth Post Office is within five minutes walk of Chemong Park, at which mail is received and despatched every day.

All incoming mail should be addressed "Care of Chemong Park Hotel, Bridgenorth P. O., Ontario, Canada."

Telephone connection.

Steamer Connections from ROCHESTER, N. Y.

Leave Rochester	Str. "North King," cor. St. Paul and Main Sts.	8.30 a.m.
Arrive	- Port Hope -	3.30 p.m.
Leave	- Port Hope, G.T.R.	4.30 p.m.
Arrive	Peterborough, G.T.R.	5.38 p.m.
Leave	- Peterborough, Bus Line	5.45 p.m.
Arrive	- Chemong Park -	6.30 p.m.



Good railway connections from Niagara frontier, also all points on G. T. R and C. P. R. for city of Peterborough, where passengers are transferred to Bus Line for Chemong Park (a distance of six miles).



