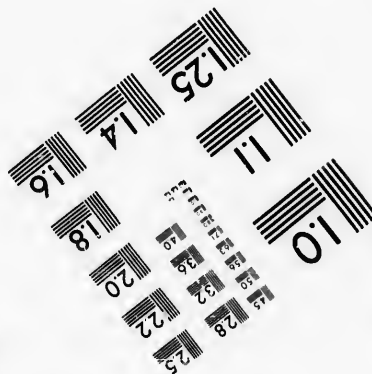
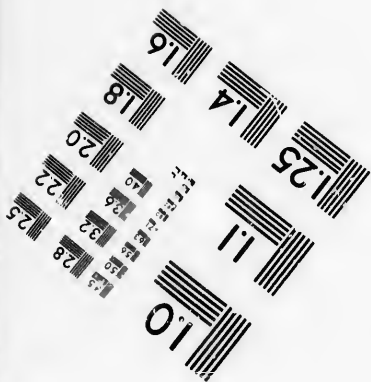
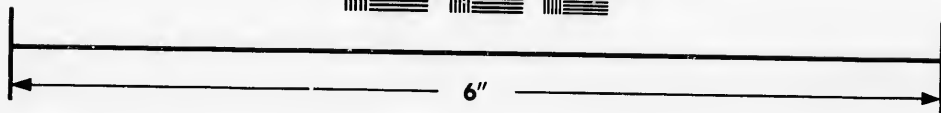
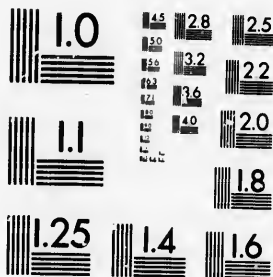


**IMAGE EVALUATION  
TEST TARGET (MT-3)**



**Photographic  
Sciences  
Corporation**

23 WEST MAIN STREET  
WEBSTER, N.Y. 14580  
(716) 872-4503

**CIHM/ICMH  
Microfiche  
Series.**

**CIHM/ICMH  
Collection de  
microfiches.**



Canadian Institute for Historical Microreproductions / Institut canadien de microreproductions historiques

**© 1986**

Technical and Bibliographic Notes/Notes techniques et bibliographiques

The Institute has attempted to obtain the best original copy available for filming. Features of this copy which may be bibliographically unique, which may alter any of the images in the reproduction, or which may significantly change the usual method of filming, are checked below.

L'institut a microfilmé le meilleur exemplaire qu'il lui a été possible de se procurer. Les détails de cet exemplaire qui sont peut-être uniques du point de vue bibliographique, qui peuvent modifier une image reproduite, ou qui peuvent exiger une modification dans la méthode normale de filmage sont indiqués ci-dessous.

- |  |  |
|--|--|
| <input type="checkbox"/> Coloured covers/<br>Couverture de couleur   | <input type="checkbox"/> Coloured pages/<br>Pages de couleur   |
| <input type="checkbox"/> Covers damaged/<br>Couverture endommagée  | <input type="checkbox"/> Pages damaged/<br>Pages endommagées   |
| <input type="checkbox"/> Covers restored and/or laminated/<br>Couverture restaurée et/ou pelliculée  | <input type="checkbox"/> Pages restored and/or laminated/<br>Pages restaurées et/ou pelliculées  |
| <input type="checkbox"/> Cover title missing/<br>Le titre de couverture manque   | <input checked="" type="checkbox"/> Pages discoloured, stained or foxed/<br>Pages décolorées, tachetées ou piquées   |
| <input type="checkbox"/> Coloured maps/<br>Cartes géographiques en couleur   | <input type="checkbox"/> Pages detached/<br>Pages détachées  |
| <input type="checkbox"/> Coloured ink (i.e. other than blue or black)/<br>Encre de couleur (i.e. autre que bleue ou noire)   | <input checked="" type="checkbox"/> Showthrough/<br>Transparence   |
| <input type="checkbox"/> Coloured plates and/or illustrations/<br>Planches et/ou illustrations en couleur  | <input type="checkbox"/> Quality of print varies/<br>Qualité inégale de l'impression   |
| <input type="checkbox"/> Bound with other material/<br>Relié avec d'autres documents   | <input type="checkbox"/> Includes supplementary material/<br>Comprend du matériel supplémentaire   |
| <input type="checkbox"/> Tight binding may cause shadows or distortion<br>along interior margin/<br>La reliure serrée peut causer de l'ombre ou de la<br>distorsion le long de la marge intérieure   | <input type="checkbox"/> Only edition available/<br>Seule édition disponible   |
| <input type="checkbox"/> Blank leaves added during restoration may<br>appear within the text. Whenever possible, these<br>have been omitted from filming/<br>Il se peut que certaines pages blanches ajoutées<br>lors d'une restauration apparaissent dans le texte,<br>mais, lorsque cela était possible, ces pages n'ont<br>pas été filmées. | <input type="checkbox"/> Pages wholly or partially obscured by errata<br>slips, tissues, etc., have been refilmed to<br>ensure the best possible image/<br>Les pages totalement ou partiellement<br>obscurcies par un feuillet d'errata, une pelure,<br>etc., ont été filmées à nouveau de façon à<br>obtenir la meilleure image possible. |
| <input checked="" type="checkbox"/> Additional comments:/<br>Commentaires supplémentaires:   | [Printed ephemera] [4] p. There are some creases in the middle of the pages.   |

This item is filmed at the reduction ratio checked below/  
Ce document est filmé au taux de réduction indiqué ci-dessous.

10X	14X	18X	22X	26X	30X
<input type="checkbox"/>	<input type="checkbox"/>	<input type="checkbox"/>	<input type="checkbox"/>	<input checked="" type="checkbox"/>	<input type="checkbox"/>
12X	16X	20X	24X	28X	32X

The copy filmed here has been reproduced thanks to the generosity of:

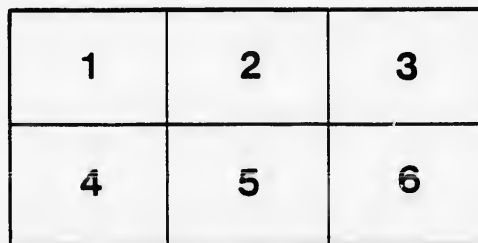
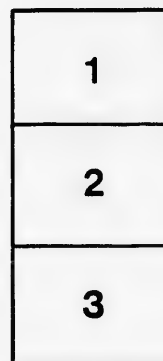
D. B. Weldon Library  
University of Western Ontario  
(Regional History Room)

The images appearing here are the best quality possible considering the condition and legibility of the original copy and in keeping with the filming contract specifications.

Original copies in printed paper covers are filmed beginning with the front cover and ending on the last page with a printed or illustrated impression, or the back cover when appropriate. All other original copies are filmed beginning on the first page with a printed or illustrated impression, and ending on the last page with a printed or illustrated impression.

The last recorded frame on each microfiche shall contain the symbol  $\rightarrow$  (meaning "CONTINUED"), or the symbol  $\nabla$  (meaning "END"), whichever applies.

Maps, plates, charts, etc., may be filmed at different reduction ratios. Those too large to be entirely included in one exposure are filmed beginning in the upper left hand corner, left to right and top to bottom, as many frames as required. The following diagrams illustrate the method:



L'exemplaire filmé fut reproduit grâce à la générosité de:

D. B. Weldon Library  
University of Western Ontario  
(Regional History Room)

Les images suivantes ont été reproduites avec le plus grand soin, compte tenu de la condition et de la netteté de l'exemplaire filmé, et en conformité avec les conditions du contrat de filmage.

Les exemplaires originaux dont la couverture en papier est imprimée sont filmés en commençant par le premier plat et en terminant soit par la dernière page qui comporte une empreinte d'impression ou d'illustration, soit par le second plat, selon le cas. Tous les autres exemplaires originaux sont filmés en commençant par la première page qui comporte une empreinte d'impression ou d'illustration et en terminant par la dernière page qui comporte une telle empreinte.

Un des symboles suivants apparaîtra sur la dernière image de chaque microfiche, selon le cas: le symbole  $\rightarrow$  signifie "A SUIVRE", le symbole  $\nabla$  signifie "FIN".

Les cartes, planches, tableaux, etc., peuvent être filmés à des taux de réduction différents. Lorsque le document est trop grand pour être reproduit en un seul cliché, il est filmé à partir de l'angle supérieur gauche, de gauche à droite, et de haut en bas, en prenant le nombre d'images nécessaire. Les diagrammes suivants illustrent la méthode.

errata  
to

pelure,  
on à

32X

MICHIGAN, OHIO  
CANADIAN CIRCUIT

EIGHTEEN  
THEATRES

CLEVELAND, CINCINNATI, BUFFALO,  
DETROIT, TORONTO,  
TOLEDO, LONDON, HAMILTON,  
WOODSTOCK, BAGINAW,  
GRAND RAPIDS, BAY CITY AND  
JACKSON.



# Grand OPERA HOUSE London.

C. J. WHITNEY.  
LESSEE.

A. E. ROOTE.  
MANAGER

ONTARIO.



W. SMITH. E. HOLLAND. W. S. PARTRIDGE.

## SMITH & BROS.

THE  
LEADING  
SANITARY  
PLUMBERS  
AND  
HEATING  
ENGINEERS  
OF  
WESTERN  
ONTARIO.

376  
RICHMOND STREET, LONDON.  
OPPOSITE GRAND OPERA HOUSE BUILDING.

A full stock of Supplies always on hand.

TELEPHONE 638.

(London Printing and Litho. Co.)

LADIES! THE ONLY WAY TO GET HELP IS THROUGH THE "FREE PRESS" WANT COLUMN.



Parisian  
Steam  
Laundry

73 & 75 DUNDAS STREET.

BRANCH OFFICES:

226 Dundas St. 752 Waterloo. 410 Hamilton Rd.  
280 " " 572 Pall Mall. 261 Wellington.  
310 " " 389 Richmond. 338 Ridout.  
322 " " 485

J. K. SPRY, Manager.

**HUESTON'S**

**LIVERY.**

**Goupe & Gab Stables**

WELLINGTON STREET.

Finest Horses and Carriages in the City.  
OPEN DAY AND NIGHT. TELEPHONE 441.

**ROBT. HUESTON,**

Proprietor.

**H. McKENNA,**

-FOR-

**Choice Cigars, Tobaccos**

AND PIPES.

ALWAYS OPEN .....

..... AFTER THE OPERA.

225 DUNDAS STREET.

**RIVARD**

The Leading Hatter  
and Furrier

HAS THE FINEST STOCK OF

**FURS**

IN THE CITY TO SELECT FROM.

HIS PRICES ARE RIGHT!

*Rivard*

London's Fashionable Hatter  
and Furrier,

400 RICHMOND-ST.

**WILLIAMS' Pianos** CANADA'S FAVORITE

Cannot be excelled for touch, singing quality, delicacy and great power of tone, with highest excellence of workmanship.

ALL THE LATEST VOCAL AND INSTRUMENTAL MUSIC RECEIVED AS PUBLISHED.

Musical Instruments of all kinds, Strings and Fittings AT LOWEST PRICES.

**R. S. WILLIAMS & SON,** 171 DUNDAS STREET, LONDON, ONT.

J. A. CRODEN, Manager.

**PROGRAMME**

Wednesday, January 17th 1894

THE DISTINGUISHED AUTHOR-ACTOR,

**WILSON BARRETT**

(The Foremost Romantic Artist of To-day)

AND HIS FAMOUS

*London Company*

The Original Play, in a Prologue and Three Acts, Entitled,

**CLAUDIAN**

The Plot Story and construction of the Play by Henry Herman. The Dialogue by W. G. Willis. The Scenery by Messrs. Walter Hann, Stafford Hall and W. Telbin. The Archaeology of Costume &c., F. W. Goodwin, Esq., F. A. S.; Madame Bernstein, Auguste et Cie. and V. Barthe. The Incidental Music by Edward Jones. Wigs by W. Clarkson. Harvest Solo sung by Miss C. Wilman.

CHARACTERS IN THE PROLOGUE.

**CLAUDIAN ANDIATES**, a Rich Nobleman of Byzantium.....**MR. WILSON BARRETT**  
The Holy Clement..... Mr. Austin Melford  
Theorus, a Sculptor..... Mr. Edward Irwin  
Zosimus, a Schoolmaster..... Mr. Stafford Smith  
Volpas, a Patrician..... Mr. Paul Belmore  
(Programme continued on next page.)

SOMETHING NEW.

Opera English & Canadian  
Caramels. Chocolate Creams.

VERY FINEST Olives in Bulk.  
French Crystalized .. Fresh Roquefort Cheese..  
FRUITS.

**FITZGERALD, SCANDRETT & CO.**  
169 Dundas Street.

ESTABLISHED 1831.

**H. DAVIS & SON,**  
**WATCHMAKERS**  
AND  
**JEWELLERS**

DEALERS IN ..  
Watches, Clocks, Jewellery, Spectacles,  
Silver Plated Ware, &c.

170 DUNDAS ST., LONDON, ONT.

**W. T. STRONG**

Dispensing  
Chemist,

184 Dundas Street,

LONDON, - ONTARIO.

**BROWN'S**

**Central Shoe Store,**

145 DUNDAS ST.



We inventory February 20th, and are determined to reduce our Stock as much as possible before that date. To do this, we have cut down prices to a figure heretofore unheard of for such quality of goods. This Great Reduction will place the best selected stock of Staple and High-Grade Shoes within the reach of all.

REMEMBER, WE KEEP NO INFERIOR OR

SHODDY GOODS.

..... EVERY LINE OF .....

BOOTS, SHOES, SLIPPERS, RUBBERS, OVERSHOES,

OVERGAINERS, LEGGINGS, MOCASINS, ETC.,

IS THE BEST OF ITS KIND.

Our position enables us to sell cheaper than any other shoe store in the western section; but this special Reduction cannot fail to further convince the Public, that for reliable footwear in all Standard Styles, "Brown's is undoubtedly the Cheapest."

THIS CUT-DOWN-PRICE

—will also apply to our—

HANDSOME AMERICAN DESIGNS IN

LADIES' AND GENTS' DRESS SHOES,  
WALKING, SKATING AND HOCKEY BOOTS;

Also our Complete, and unequalled (for Style and Finish) assortment of YOUTHS', MISSES', BOYS', GIRLS' AND BABY SHOES.

NO RESERVE.

**John S. Brown,**

TELEPHONE 881.

IF YOU WANT THE BEST, TAKE THE "FREE PRESS." ALL THE NEWS!

IF YOU SEE IT IN THE "LONDON FREE PRESS," IT IS SO!

—GO TO—  
**SOUTHCOTT'S**  
 —FOR YOUR—  
**Overcoating**  
 —OR—  
**FALL & SUITING**  
 AND GET SATISFACTION AT  
 CLOSE PRICES.  
**361 RICHMOND STREET.**

—FOR THE—  
**HUNT BALL**  
 WE ARE SHOWING A FULL RANGE OF  
**Shirts, Ties and Gloves,**  
 FOR EVENING WEAR.  
**GRANAM BROS.,** LEADING FURNISHERS  
 AND HATTERS. . . . .

**Wm. Stevely & Son,**  
 —THE LEADING DEALERS IN—  
**STOVES, RANGES,**  
 .. AND ..  
**HOUSE FURNISHING GOODS.**  
 OUR STOCK IS THE LARGEST.  
 OUR PRICES THE LOWEST.  
**362 RICHMOND STREET.**  
 'PHONE 452.

I-I-I-I-I-I-I-I-I-I

PRINTERS  
 LITHOGRAPHERS  
 ENGRAVERS

**The**  
**London**  
**Printing and**  
**Lithographing**  
**Co'y,** SUCCESSORS TO FREE PRESS  
 PRINTING AND LITHO.  
 DEPARTMENTS.

"FREE PRESS"  
 BUILDING.

BEST WORK  
 AT MODERATE  
 PRICES.

I-I-I-I-I-I-I-I-I-I

**TECUMSEH HOUSE**  
 LONDON.



Directly opposite G.T.R depot;  
 street railway past the doors;  
 convenient to all the wholesale  
 and retail business houses of  
 city, making it the most desir-  
 able hotel in the city; elevator,  
 and heated throughout with  
 steam.

Porter in attendance on  
 arrival of all trains.

**RATES, \$2.00 AND \$2.50**  
**PER DAY,**

ACCORDING TO LOCATION.

No Extra Charge For Baggage.

**C. W. DAVIS, PROP.**

**«Programme Continued.»**

Symachus, a Tradesman . . . . . Mr. T. W. Percyval  
 Sesiphon, a Slave Dealer . . . . . Mr. H. B. Gibben  
 Demos, a Gladiator . . . . . Mr. T. Bolton  
 African Slave . . . . . Mr. Alfred Rivers  
 Serena, a Slave, the wife of Theorus, Miss H. Wright  
 Caris, her child . . . . . Miss Cissie R. Gers  
 Scene 1—Byzantium, A. D. 326. Scene 2—Cave  
 in the Forest of Byzantium. One hundred years are  
 supposed to elapse between the Prologue and the Play.

**CHARACTERS IN THE PLAY.**

**CLAUDIAN ANDIATES, . . . MR. WILSON BARRETT**  
 Almida, Daughter of Alcares . . . Miss Maud Jeffries  
 Alcares, a wealthy Farmer . . . Mr. Ambrose Manning  
 Belos, a young Farmer . . . . . Mr. Horace Hodges  
 Thariogalus, Tetrarch of the Province  
 of Charydos . . . . . Mr. Franklin McLeay  
 Agazil, a Blacksmith . . . . . Mr. H. Cooper Cliffe  
 Rhamantes, Claudian's Steward . Mr. T. Brainbridge  
 Goths of Tetrarch's Guards . . . } Mr. H. H. Barber  
 . . . . . } Mr. W. Ford  
 Officer of the Herculeans . . . . . Mr. A. Lynd  
 Edessa, daughter of Alcares . . . Miss Daisy Belmore  
 Therenia, . . . . . } Peasant { Miss Marie Dorey  
 Clea . . . . . } Girls { Miss Annie Bedford  
 Galena, a Tramp . . . . . Miss Kate Barton  
 Hera, her Daughter . . . . . Miss Alice Gambier  
 Sabella . . . . . } Slaves in { Miss Elsie Chester  
 Grati . . . . . } Claudian's { Miss E. Royson  
 Cloris . . . . . } Palace { Miss Clarissa Reynolds  
 ACT I—Vineyard in Charydos, near Bithynia.  
 ACT II—Scene 1—City of Charydos. Scene  
 2—Chamber in the Walls. Scene 3—Claud-  
 ian's Palace.  
 ACT III—Claudian's Palace in Ruins.

J. B. McCormick.. )  
 A. E. Field..... ) For ( Business Manager  
 Chas. Cathart..... ) Wilson ( Treasurer  
 Albert Rivers ..... ) Barrett ( Stage Manager  
 Madame Bernstein ) Ass't Stage Manager  
 . . . . . ) Costumer

(Programme continued on last page.)

**McLEAN'S HARDWARE**

—FOR—

**Bissell's Carpet Sweepers.**

WE CAN SHOW YOU TWELVE DIFFERENT STYLES SAME  
 AS ARE NOW DISPLAYED BY THE BISSELL COM-  
 PANY AT THE WORLD'S FAIR.

**CALL AND SEE THESE GOODS**

—AT—

**McLEAN'S HARDWARE,**  
**151 Dundas Street.**

**W. T. STRONG,**  
*Dispensing*  
*Chemist,*  
**184 DUNDAS ST.,**  
 LONDON, ONT.

.. FOR ..  
**Fine Etchings . . .**  
 —AND—  
**Engravings**  
 —TRY—  
**O. B. GRAVES,**  
 222 DUNDAS STREET.



**BRENER BROS**  
 LONDON ONT.

FOR SALE AT  
**JOE RANKIN'S**  
 . . . . . OPPOSITE MASONIC TEMPLE.

LOOK OUT FOR THE "LONDON FREE PRESS" ON ALL EARLY MORNING TRAINS.

**GLOVES**  
— IN —  
SILK & KID  
— IN —  
18 to 30 Inch,  
IN ALL THE NEW SHADES.

TELEPHONE 611.

OPERA  
FANS

**EVENING GOODS**

*A. Rolfe*

OPERA  
HOSE

We show the largest  
range of  
**S.I.L.K.S.**  
IN THE CITY.

OUR NEW **Velour Cloth**  
IS THE LATEST.  
In all the New Tints,  
With Trimming to Match.

**FINE DRESSMAKING.**

202 DUNDAS STREET.

**EDY BROS.**

The Artistic Photographers,

— RECEIVED —

**Three First Prizes**

— AND —

**DIPLOMA**

For Finest Display of Photography  
AT WESTERN FAIR, 1893.

Cabinet Photos, \$3 per doz.

**EDY BROS.,**

214 DUNDAS STREET.

The **HUB**

Restaurant,

203 & 205 DUNDAS STREET.

For a NICE LUNCH after the  
Opera, go to the  
**Hub Restaurant.**

Steaks, Chops, Chicken,  
Oysters, Etc.

OPEN TILL 12.00 P.M.

J. W. MARTIN, Prop.

(Late of the Martin House)

« Programme Concluded. »

During the evening, incidental to the stage performance,  
the ORCHESTRA of the Grand Opera House, under  
the direction of MR. FRED. L. EVANS, will  
perform the following selections

OVERTURE—"Bohemian Girl," ..... Halpe  
SELECTION—"Dorothy," ..... Cellier  
LANCERS—"Wang" (by request), ..... Boeltger  
GALOP—"Comet," ..... Weingarten

The above programme subject to transposition

N. B.—The Orchestra of the Grand Opera House may be secured  
for engagements outside the theatre, by applying at or addressing the  
Box Office.

The Furniture used on stages is supplied by JOHN FERGUSON & SON,  
Furniture Manufacturers.

**NEXT † ATTRACTION**

Friday, January 19th.

**Hunt Club**

**Ball.**

TICKETS ON SALE AT

**BURNS'.**

**A FINE PERFORMANCE**

is a satisfactory return  
for your money, but when  
you can get from us a  
superior quality of Coal  
or Wood at the same price  
you would pay for an in-  
ferior quality, it is even  
more satisfactory. When  
in need of "warmth," try  
us.

**CAMERON'S**

421 RICHMOND STREET,  
and BURWELL STREET at G. T. R.

WE call the attention of our business men to the  
EFFICACY of an advertising medium. It reaches  
the class of people whose trade you want, and the  
way to get that trade is to make yourself known.

**BELTON & ROOTE,**

BILL POSTING,

DISTRIBUTING

...AND...

GENERAL ADVERTISING AGENTS

Control all the Bill Boards and Dead Walls through-  
out the City. Population of City, 40,000.

All orders for Bill Posting, Distributing, Card  
Tacking, and General Advertising for  
Western Ontario will receive  
prompt attention.

OFFICE: BOX OFFICE, OPERA HOUSE.

**Roses, Carnations,**

**Palms,**

**Ferns, Bulbs,**

**J. GAMMAGE & SONS,**

218 Dundas Street.

**INDIAN... TEA IMPORTING HOUSE.**  
CEYLON

NEW BLENDS, DELICIOUS AND ECONOMICAL, AT MODERATE PRICES.

"English Breakfast," "Five o'clock Tea," & "Club House" Blends.  
60c. 50c. 45c.

These Blends are standard selections of choice Teas. Highly recommended to  
families for their fine quality and economical properties.

**S. FUGE,**

— IMPORTER OF —  
**CHOICE TEAS** 212 Dundas St.  
TELEPHONE 658. LONDON.



