

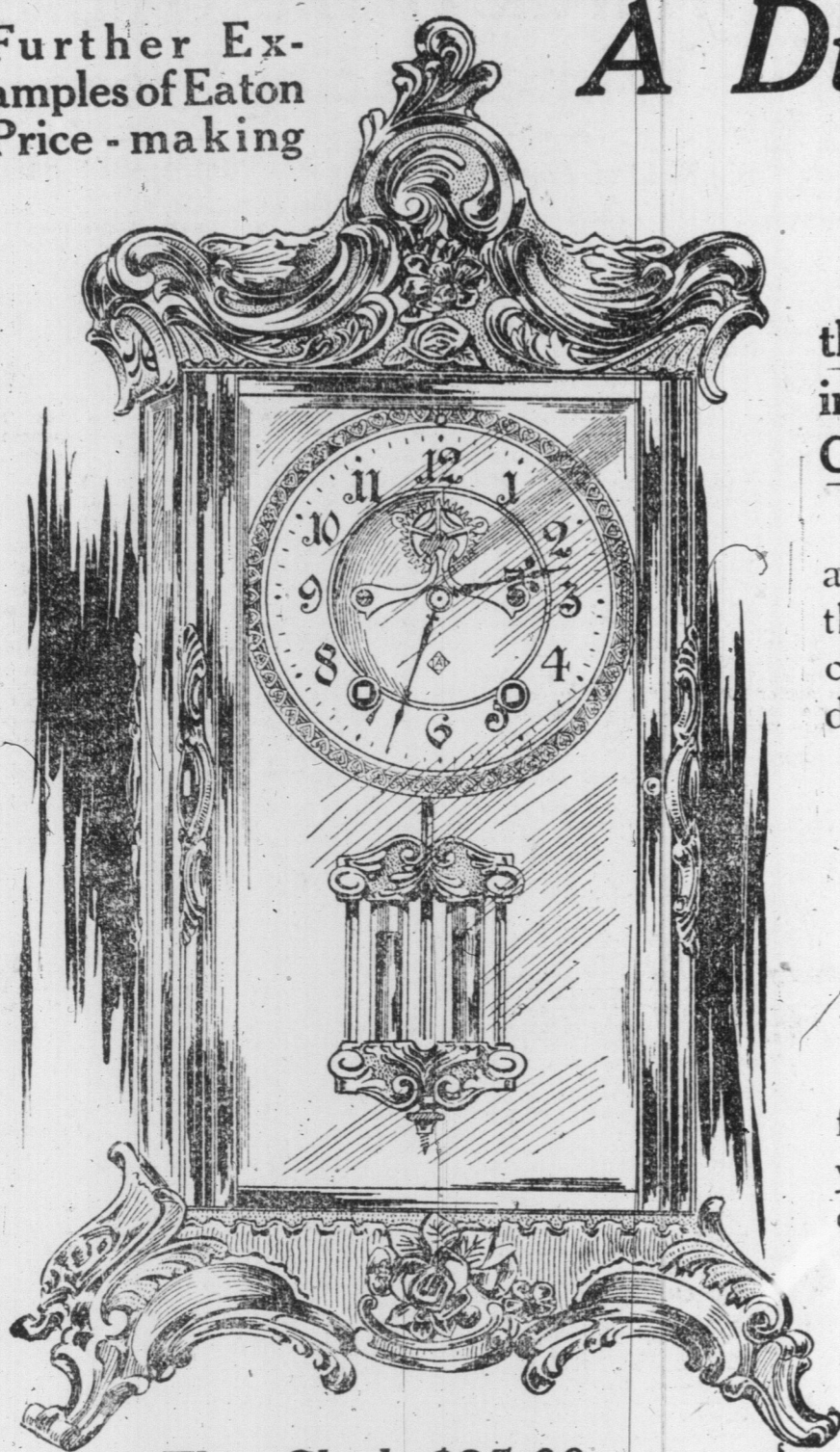




# EATON'S FOR MANTLE CLOCKS AND "EATON" WATCHES

Further Examples of Eaton Price-making

## A Display of French Mantle Clocks of the Highest Degree of Excellence



This Clock \$25.00

A TIMEPIECE THAT WOULD GRACE THE FINEST HOME IN THE LAND. Case is of Ormolu gold—a wash of pure gold on foundation of brass, with edges and scroll work brilliantly burnished. Front, back and sides are of heavy bevel plate glass, leaving entire works and strike exposed to view. Visible escapement in dial; four pillars of beautiful gold and colored enamel, with Ormolu gold base and top. SEE THE MERCURY PENDULUM—a feature of these clocks—no matter what the temperature, the mercury adjusts the swing, assuring correct time. Finest grade of American movement, hour and half-hour strike. Price **25.00**

### Egyptian Mantle Clock, as Illustrated

You'll need to see this rare piece of work to appreciate the beauty of the design and material. The drawing gives an idea of its construction—note the Egyptian scroll work, gold and silver leaf on genuine black marble forming the base of the clock, next comes a layer of green marble, then another of black marble, upon which rests the clock in a case of carved marble showing hieroglyphics and metal statues at each side, eight-day movement with hour and half-hour strike. On top sets a large metal Sphinx. Price of clock **85.00**

The Obelisks of green marble with black marble base are constructed to match the clock, and stand about 20 inches high. These are sold separately or with the clock. Price of Obelisks, each **20.00**

For accuracy, rare finish and attention to detail the French are acknowledged the finest clock makers in the world, and in our display of FRENCH MANTLE CLOCKS we show splendid examples of their work.

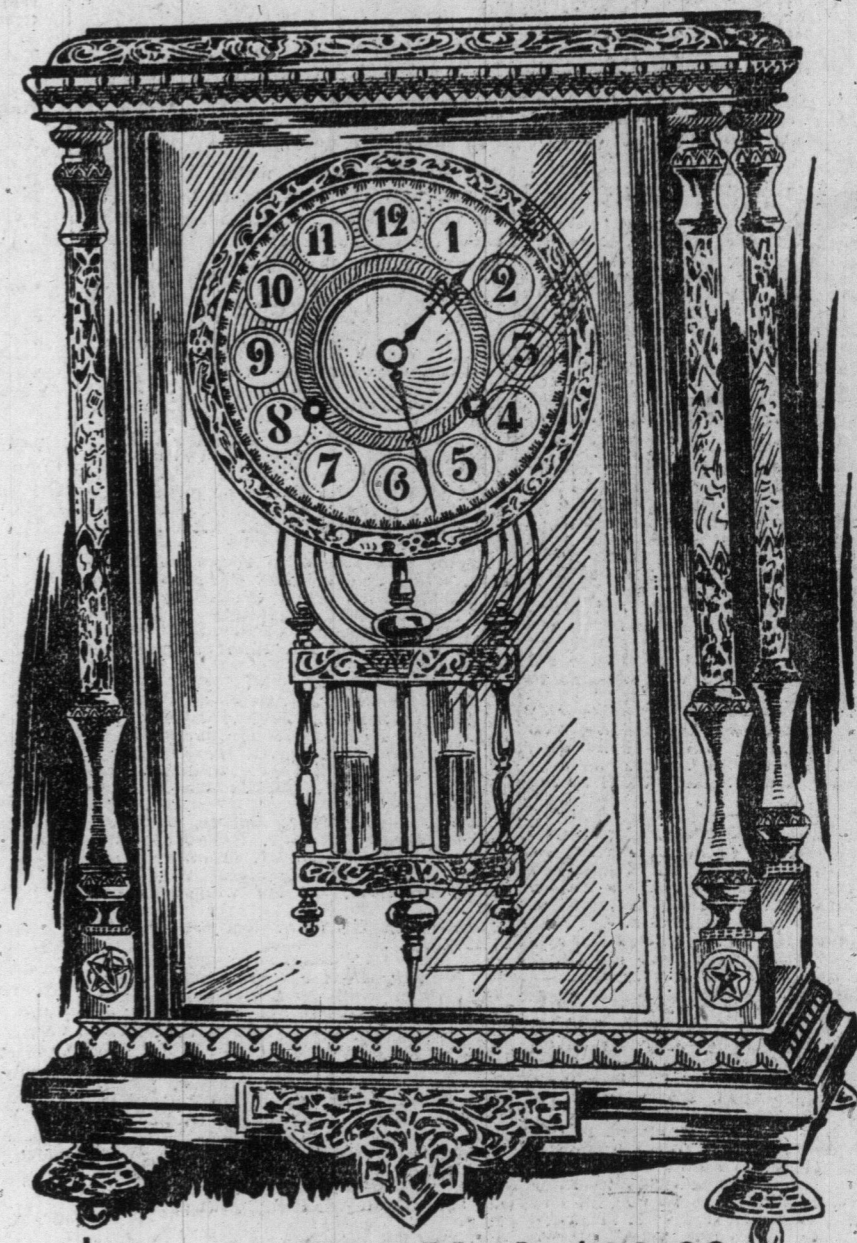
You'll see clocks that for beauty of design, high quality and excellence of time-keeping stand without peers—clocks that combine the unequalled art of the French with their rare clock-making skill. See the illustrations; they're sketched direct from the clocks.

Direct to the maker in France we go for these, the clocks are shipped to us and, after being thoroughly examined, go straight to our customers.

We treat these beautiful pieces of art like other merchandise, charging only our small drygoods profit—that's how we can sell such clocks for the prices we do.

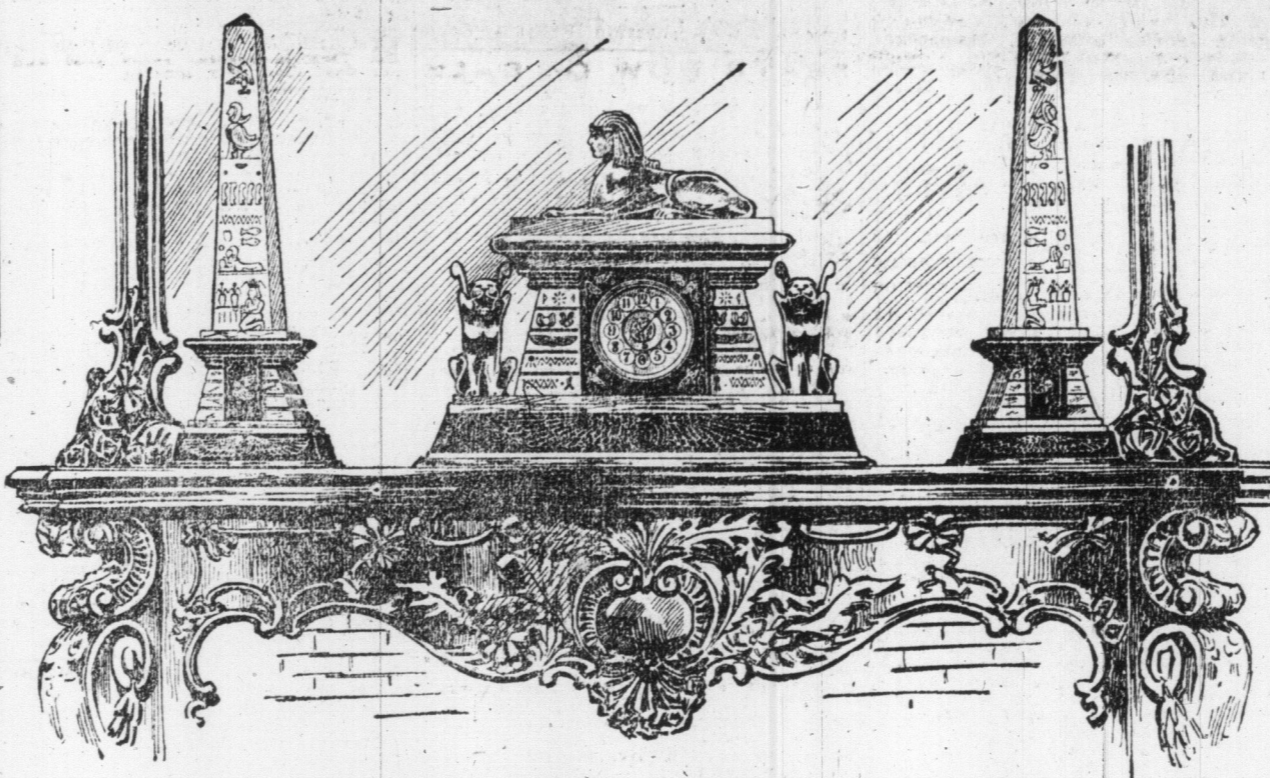
Every clock is accompanied by a written guarantee, and from the time they arrive in the store till they're set up in your home they're handled by men thoroughly competent and experienced in their work.

For a wedding gift of elegance, usefulness and life-long service choose a French Mantle Clock.



This Clock \$30.00

Has Genuine French movement of exquisite finish in every little detail, with the dead beat escapement. On each corner are fancy pillars of blue, red, white and black enamel, with gold-plated horse and top. Ormolu dial with rim of enamel and plain gold-plated roof with enamel edge. Case is heavy bevel plate glass, exposed movement, four fancy feet, with scroll work. Guaranteed perfect timekeeper. Price **30.00**

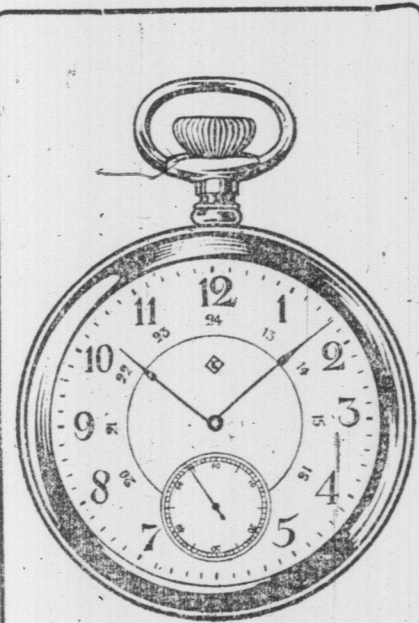


PRICE COMPLETE, \$125.00.

### One of the Most Beautiful Clocks

in the collection. Eight-day, hour and half-hour strike, finest French movement—some of the pivots being as fine as a high-grade watch—pendulum has mercury tubes, cathedral gong, visible movement and strike; case Ormolu gold, gold plate, with curved bevel plate glass sides and plate glass door front and back. Plain base with four fancy feet, oval top and pillars genuine enamel in Masonic design, stands about 14 in. high. Price **60.00**

## When You Think of a Good Watch, Think of the "Eaton"



Double Sunk Enamel Dial eliminates the possibility of the hands catching, which often happens in plain dials.

We ask you particularly to see the 17-jewel in 12 to 16 size for men. It's the watch for the business man—the traveller, the professional man and the society man. It surpasses all other timepieces of the same grade in accuracy and action—under all conditions of heat, cold or position—is finely adjusted and has been thoroughly tested.

The 17-jewel has all the modern improvements used in high-grade watches, and we make no difference in price for 12 or 16 size. **12.50** In 10k gold-filled case...

Gold-filled means that two sheets

of gold are placed each side of a stronger metal. Gives a firmer case for much less money than solid gold, is lighter in the pocket and yet is not distinguishable from solid gold.



The "Eaton" Watch also comes in 15 and 21 jewel movements, both as wonderfully good values as the 17 jewel. These prices:

- 15-JEWEL, 12 OR 16 SIZE, 10K GOLD-FILLED CASE, **8.50**
- 21-JEWEL, 12 OR 16 SIZE, 10K GOLD-FILLED CASE **16.50**
- 15-JEWEL, 0 SIZE, 25-YEAR CASE **12.25**
- 21-JEWEL, 0 SIZE, 25-YEAR CASE **23.50**

—Main Floor—Yonge St.



Brequet Hair Spring does away with the subtle gaining of time caused by the hair spring catching.

# THE T. EATON CO. LIMITED













COBALT--- Market Continues to Broaden for Cobalt Stocks ---COBALT



THE CROWN JEWEL MINES, LIMITED

Capital \$350,000 - Shares Par Value \$1

ARE YOU AWARE THAT THE MONTREAL RIVER MINES WILL SURPASS THOSE OF COBALT?

Many mining men experienced in Cobalt mines believe that the Montreal River silver district will surpass the Cobalt mines.

The Crown Jewel Mines consist of one hundred and fifty acres in the Montreal River and Nett Lake districts, about eight miles from Latchford.

We have the report of one of the most competent and reliable engineers in the Cobalt camp, who has given his report, not from a selling point, but only with the idea of acting in behalf of the investors.

Our J. S. 61 property, consisting of 39 acres, is on the

Montreal River and has been pronounced by several mining engineers who have seen it to be one of the best properties in the district. We have uncovered one vein in diabase contact fourteen inches wide on the top of the hill, and over four feet wide where vein strikes into Trout Lake.

We ask you to remember that our capitalization of \$350,000 is extremely low, and that most of the mining companies in the camp are capitalized at many times the amount of this company, with a great deal less valuable property, and can show poorer values.

We solicit your consideration of our offer, and firmly believe that the money you invest with this company will make you money quickly. We confidently believe that an

investment in the Crown Jewel Mines is reasonably sure to yield you a quick return. We have valuable assets besides our ore on these properties. We are building a saw mill; this will supply all the camps in the district with timber and we have on J.S. 61 property over \$8000.00 worth of A1 timber, so you see by our proof that any investment you make with us is safeguarded by valuable assets.

After the way the Crown Reserve stock sold we anticipate a similar sale of Crown Jewel, and advise our clients to subscribe as early as possible.

We are offering only 50,000 shares of treasury stock at the list price of 50c per share, and as the next issue of the treasury stock will be sold at an advanced price, we advise early subscription.

If you wish to increase your bank account, we know of no way that it can be done with better chances of success than by buying just as much Crown Jewel stock as you can get. Remember, the price now is 50c per share. Watch it go up, and quickly, too. Come in and see us. Let us show you the best values of the Cobalt mines, and carrying good silver values on the surface. Send for prospectus.

ROOMS 1021-22,

TRADERS BANK BUILDING

BANKERS---HOME BANK OF CANADA.

MAKE ALL CHEQUES PAYABLE TO C. H. LAMBERT, SECRETARY-TREASURER.

PHONE MAIN 6434.

FOR IMMEDIATE PURCHASE BUY CROWN JEWEL MINES, LIMITED

50 CENTS PER SHARE, PAR VALUE \$1.00

This will be a second Crown Reserve. We advised our clients to buy Crown Reserve when it was selling at 20c. Now it is selling at \$2.60, and will go much higher.

THE CROWN JEWEL MINES, LIMITED, have a group of properties situated in the Montreal River and Nett Lake district, comprising, in all, 150 acres. The Montreal River silver district is to-day what Cobalt was three years ago, and, from indications, bids well to prove more valuable.

There is only a small block of this stock for sale at 50c. This should all be sold this week, and I advise my clients and friends to wire or phone their orders without delay. Orders will be filled as received.

Owen J. B. Yearsley, 328 to 330 Confederation Life Building, TORONTO Member Standard Stock Exchange

COBALT SPECIAL HELD TEN HOURS BY WRECK

Hungry Passengers Angered at Pullman Methods and T. & N. O's Lack of Relief Efforts.

COBALT, Ont., Nov. 1.—(Special).—An accident to a freight train 47 miles north of North Bay delayed yesterday's Cobalt special and other T. & N. O. trains several hours. The result was that the Cobalt special, due here shortly after 11 o'clock Saturday morning, did not arrive until 9 o'clock in the evening. The Pullman passengers were transferred at Temagami so that the Pullman cars did not go thru to Englehart, but were switched on a south bound train for the accommodation of Pullman passengers on it. Several passengers bound for the north at first refused to leave the coaches, but the people who lived here were only too willing to do so to accommodate their friends going south. The point was raised by the kickers however, that the Pullman company had accepted money for their transportation to various points and the contract was not filled. A round-robin was signed and the threat made to take action against the Pullman company. The accident was caused by a wheel on one of the freight cars breaking. The train was derailed and the track badly torn up for a considerable distance. The hardships of the passengers on the Cobalt special consisted in being kept without anything to eat all day and the authorities are blamed for not making some effort to relieve the situation. The wrecking train did not reach scene of accident for several hours, but when it is reported that the wrecking train had accepted money for their transportation to various points and the contract was not filled.

United States Election Returns

Our office will be open on Tuesday evening, Nov. 2nd, for the purpose of receiving the Presidential and other election returns.

Spader & Perkins Members New York Stock Exchange. 12 14 KING STREET WEST.

WATCH FOR

GIFFORD EXTENSION

The Greatest Cobalt Opportunity Yet Offered the Investing Public

LOW CAPITALIZATION

VIGOROUS DEVELOPMENT

AN EARLY SHIPPER

ORE IN SIGHT

LOCATION

In the Richest Area in Coleman Township

Watch this space daily for further particulars of

GIFFORD EXTENSION

membered that North Bay is not a divisional point of any big railway, an emergency crew is not easily got together on short notice. Cold weather has struck this country and winter has undoubtedly started. No snow has fallen nor are the lakes as yet frozen up, but this is anticipated at any time now. High-Class Organs on Sale. A number of high-class organs of leading Canadian and American manufacture, all in good condition, are on sale in the warehouses of the old firm of Heitzman & Co., Limited, 115-117 West King-street, Toronto. These instruments are marked down to less than half manufacturer's prices. Sold on easy terms of payment.

THREE MORE VICTIMS OF 'ILL-FATED CAR

Mowed Down, While Out for Walk Before Enjoying Supper Party—Two Narrowly Escape.

WINDSOR, Ont., Nov. 1.—(Special).—Corporal Brian of Essex empaneled a jury Saturday and viewed the remains of the three young men who were killed by the W. E. and L. E. car at Pelton Friday night.

James and Francis Battersby, cousins, and Walter Gillula, the victims, and James Demison and Charles Battersby, a brother of Francis, were guests at a party at the house of W. C. Donaldson of Windsor.

According to the story of the dead men's companions, Gillula had come in from the watch tower shortly before midnight and was on his way back to set his signals before returning for supper, which was just being served. His four companions volunteered to go with him for the sake of the walk. Instead of walking down the Michigan Central tracks, the party took the track of the suburban railway, which runs

parallel with the M. C. R., in order to avoid a Windsor bound train, which was approaching. The noise of the engine and the glare of its headlights deafened and blinded them so completely that the heavy suburban car approaching from the road mowed them down without warning.

The car Republic, which killed them, is known as the ill-fated car of the road. It has figured in every fatality that has occurred since the line was opened last May, and 41 deaths roll stands at six. Mrs. Keturah Fulmer and her daughter met death together beneath it, while driving across the tracks near Kingsville last summer, and only last week it killed young Taylor, near Essex, who sacrificed his life by taking the time to secure the safety of his little brother, who was riding with him.

THREE TO HANG SAME DAY.

VANCOUVER, Oct. 31.—A Chinese named Chung was this afternoon sentenced to be hanged Dec. 18 for the murder of a countryman in South Vancouver pigery. Three murderers are to be hanged on the same day.

To Penitentiary for Stealing Brass.

LONDON, Ont., Nov. 1.—(Special).—William McCormick, the young man who was convicted last week of stealing a quantity of brass from the Canadian Packing Co., was Saturday sentenced to two years in Kingston Penitentiary.

TO HOLD RIFLE CONTEST NOV. 10.

OTTAWA, Nov. 1.—(Special).—The Dominion Rifle Association has completed arrangements for the inter-university match to be fired Nov. 10. Each team will fire on its own range at 200, 500 and 800 yards. A silver cup will be presented to the winner by the D.R.A.

British Columbia Mining.

NELSON, B.C., Oct. 31.—A noteworthy feature of the shipments for the week is the inclusion of a considerable tonnage of zinc from Whitewater mines, near Sandon. Whitewater also shipped lead to Trail. Total zinc shipments, now amount to over six thousand tons, a large figure that has been attained in any one year. Of this all but three hundred tons have gone to Oklahoma, the remainder having been shipped to Autwerp, sixty tons going forward to-day from Nelson. With the shipments of lead and zinc taken together, with the exception of the St. Engine, the Whitewater has this year shown itself to be the best shipper in Kootenay among the lead, silver and zinc properties. Silver Huester is a new shipper this week and there are several silver mills which have started work. The total shipments for the year are now very close to a million and a half tons. Twelve years ago the total shipments were under two hundred thousand tons.

Following are the shipments from Rossland for the week ending Oct. 31: Centre \$241,539, Le Roi No. 1 925, Le Roi No. 2 230, St. Elmo 25. Total for the week 6195 and for the year to date 27,417 tons.

BAL

Ltd.

and a limited development... MINING... next spring... the mines... setting, con... as set aside... lition to the... wire, phone

ONTARIO... OR EARLY

IN CANADA... LAKE

CO.

ASTWOOD

ON APPLICATION

KNIGHT... BLDG.

TO-DAY

E

FURNISH... PROPERTY

CO.

GE... Toronto

PANY

WOOD

Cobalt

ronto.

GOING... HIGHER.

es, Tre... Nova... terson

AMEY... LIMITED

CKS

LAND

S... change

ldg., Toronto



Bank of Hamilton Dividend Notice, Bank of Montreal, Bank of Toronto, and various financial advertisements.

BANK OF HAMILTON Dividend Notice. Notice is hereby given that a Dividend of 1-1/2 per cent. (10 per cent. per annum) on the Paid-up Capital of the Bank for the quarter ending 30th November, has this day been declared.

STEADY AT THE WEEK END ARGENTINE NEWS DISPUTED

Grain Exchanges Are Aiding on Debatable Ground and Price Changes Are Narrow. World Office Saturday Evening, Oct. 31. Liverpool wheat futures closed today unchanged, and corn futures 1-3/4 lower.

ST. LAWRENCE MARKET.

Receipts of farm produce were 700 bushels of grain, 20 loads of hay, with a large number of loads of mixed produce in the north market building, and a heavy delivery of poultry, with a moderate supply of butter and eggs.

Market Notes.

T. Barron & Son bought the bulk of the lots of poultry offered on the market at prices quoted in table. M. P. Mallon reports receipts of poultry for the week as follows: prices quoted in wholesale market table.

Table with columns for various commodities like Wheat, Corn, Beans, etc., and their prices.

FARM PRODUCE WHOLESALE.

The prices quoted below are for first-class quality, lower grades sold at correspondingly lower quotations.

Table listing prices for various farm products like Apples, Potatoes, Eggs, etc.

IN THE LAW COURTS

HIGH COURT. Announcements. Osgoode Hall, Oct. 31. List of motions set down for Monday, 2nd November, at 11 a.m.

NEW YORK GRAIN AND PRODUCE. NEW YORK, Oct. 31.—Flour—Receipts, 25,871 barrels; exports, 15,739 barrels; sales, 2,500 barrels; market quiet and lower to sell.

NEW YORK DUTY MARKET. NEW YORK, Oct. 31.—Butter—Firm; receipts, 24,057; creamery, extra, 16-1/2 to 17-1/2; thirds to fourths, 16 to 16-1/2.

CATTLE MARKETS

Cables Steady—American Live Stock Markets Are Quiet. NEW YORK, Oct. 31.—Beef—Receipts, 819; nothing doing in live cattle; feeling steady; exports to-day, 735 cattle and 690 quarters of beef.

NEW YORK CATTLE MARKET. NEW YORK, Oct. 31.—Cattle—Receipts, 1,475; nothing doing in live cattle; feeling steady; exports to-day, 735 cattle and 690 quarters of beef.

NEW YORK SHEEP MARKET. NEW YORK, Oct. 31.—Sheep—Raw steady; fair refining, 24.90; centrifugal, 96 test, 23.85; molasses sugar, 22.90; refined steady.

NEW YORK WHEAT MARKET. Following are the closing quotations on the Winnipeg grain futures market:

CHICAGO MARKET. J. P. Bickell & Co., Lawlor Building, report the following fluctuations at the Chicago Board of Trade to-day:

NEW YORK SUGAR MARKET. NEW YORK, Oct. 31.—Sugar—Raw steady; fair refining, 24.90; centrifugal, 96 test, 23.85; molasses sugar, 22.90; refined steady.

NEW YORK CATTLE MARKET. NEW YORK, Oct. 31.—Cattle—Receipts, 1,475; nothing doing in live cattle; feeling steady; exports to-day, 735 cattle and 690 quarters of beef.

NEW YORK SHEEP MARKET. NEW YORK, Oct. 31.—Sheep—Raw steady; fair refining, 24.90; centrifugal, 96 test, 23.85; molasses sugar, 22.90; refined steady.

NEW YORK WHEAT MARKET. Following are the closing quotations on the Winnipeg grain futures market:

CHICAGO MARKET. J. P. Bickell & Co., Lawlor Building, report the following fluctuations at the Chicago Board of Trade to-day:

NEW YORK SUGAR MARKET. NEW YORK, Oct. 31.—Sugar—Raw steady; fair refining, 24.90; centrifugal, 96 test, 23.85; molasses sugar, 22.90; refined steady.

NEW YORK CATTLE MARKET. NEW YORK, Oct. 31.—Cattle—Receipts, 1,475; nothing doing in live cattle; feeling steady; exports to-day, 735 cattle and 690 quarters of beef.

NEW YORK SHEEP MARKET. NEW YORK, Oct. 31.—Sheep—Raw steady; fair refining, 24.90; centrifugal, 96 test, 23.85; molasses sugar, 22.90; refined steady.

NEW YORK WHEAT MARKET. Following are the closing quotations on the Winnipeg grain futures market:

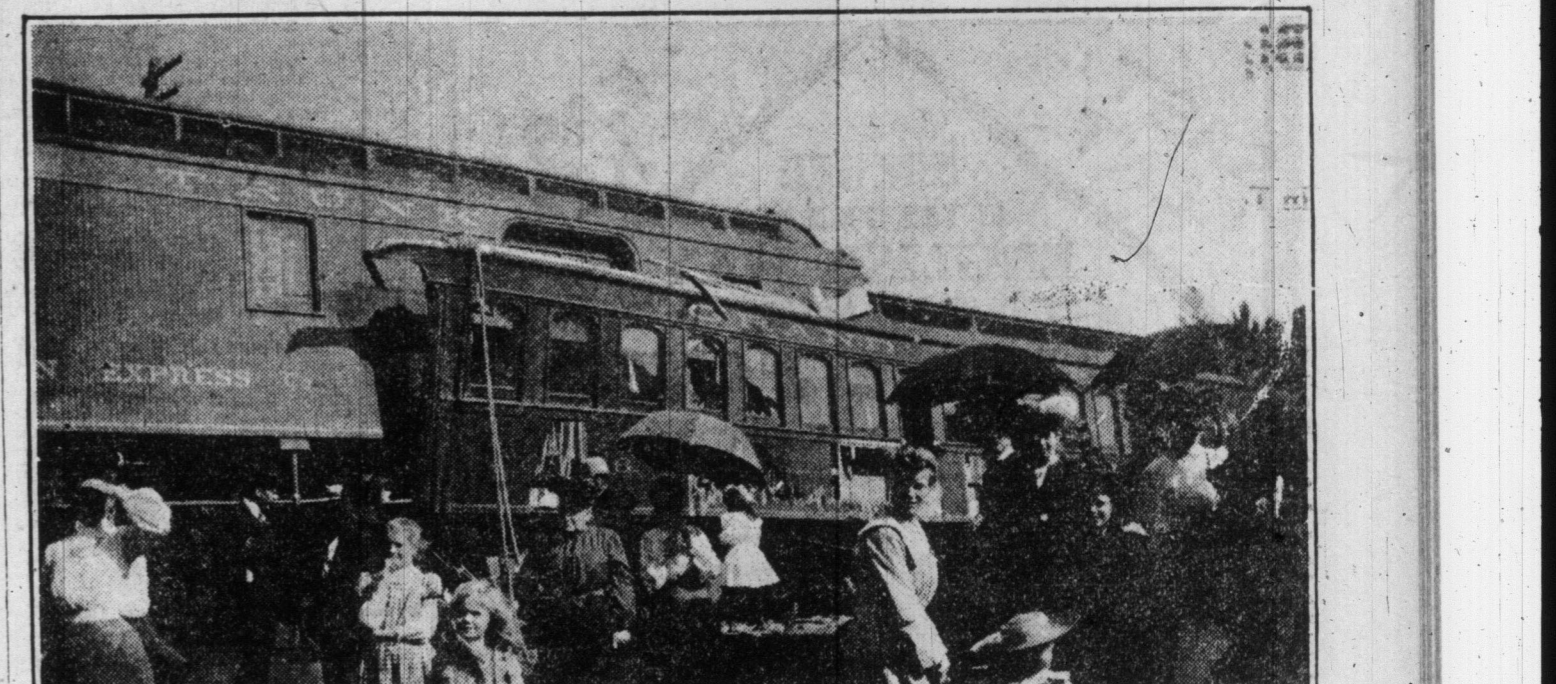
CHICAGO MARKET. J. P. Bickell & Co., Lawlor Building, report the following fluctuations at the Chicago Board of Trade to-day:

NEW YORK SUGAR MARKET. NEW YORK, Oct. 31.—Sugar—Raw steady; fair refining, 24.90; centrifugal, 96 test, 23.85; molasses sugar, 22.90; refined steady.

NEW YORK CATTLE MARKET. NEW YORK, Oct. 31.—Cattle—Receipts, 1,475; nothing doing in live cattle; feeling steady; exports to-day, 735 cattle and 690 quarters of beef.

NEW YORK SHEEP MARKET. NEW YORK, Oct. 31.—Sheep—Raw steady; fair refining, 24.90; centrifugal, 96 test, 23.85; molasses sugar, 22.90; refined steady.

NEW YORK WHEAT MARKET. Following are the closing quotations on the Winnipeg grain futures market:



No. 1—The Crumpled-up G.T.R. Train at Richmond, Que. A head-on collision between a Montreal special and No. 5 Island Pond local passenger train, en route to Montreal, occurred at Richmond, Quebec, on Wednesday, Oct. 29, at 10:25 a.m.

This tragic story is retold with a YOU are cordially invited to inspect and investigate a perfect working model of the only perfect safety device for railways at our exhibition rooms, on the top floor of the Norwich Union Building.

Universal Signal Co., Ltd.

12-14 Wellington Street East, Toronto.

Some Items Condensed From Sunday World

LOCAL. M. A. Rodman was badly shaken up and Alex. Ford has his leg broken. They were hit by autos.

GENERAL. The Chinese papers are totally ignoring the visit of the second U. S. squadron at Amoy.

ENTERTAINING THE CHOIR. Program of Entertainment for Montreal and Ottawa Visits.

OTTAWA WOMEN HAVE FORMED A BRANCH OF THE WOMEN'S CANADIAN SUFFRAGE ASSOCIATION.

Wm. Sangster, who was tried for the Delorme murder, is in prison for the real murderer. He is in prison for theft.

SNOW IN SASKATCHEWAN HAS AGAIN DELAYED TRAINS.

ALFRED BRUCE, aged 25, was very badly struck by a live wire at Owen Sound, while going to the rescue of Wm. Myers, another workman, who had been stunned.

SENIATOR TESSIER OF QUEBEC IS ASKING THE DOMINION RAILWAY BOARD TO STOP THE OTTAWA ELECTRIC RAILWAY FROM SUPPLYING PASSENGER SERVICE TO SENATORS AND MEMBERS OF PARLIAMENT.

UNITED STATES. The House of Representatives, reports that the Rockefeller statement is a trick, "doubtless made by agreement with the Democratic party."

RETURN TICKETS AT SINGLE FARE will be issued by the Grand Trunk Railway System account of Thanksgiving Day.

LANCASTER'S MAJORITY. ST. CATHARINES, Nov. 1.—(Special.)—According to official returns Edward A. Lancaster, Conservative, is elected over Weland D. Woodruff, Liberal, by 249 majority.

The Royal Bank of Canada 10 KING STREET EAST SAVINGS BANK DEPARTMENT—SPECIAL FEATURE.

AUCTION SALE OF Valuable Picking Farm, Household Goods, etc.

ENTERTAINING THE CHOIR. Program of Entertainment for Montreal and Ottawa Visits.

ENTERTAINING THE CHOIR. Program of Entertainment for Montreal and Ottawa Visits.

ENTERTAINING THE CHOIR. Program of Entertainment for Montreal and Ottawa Visits.

ENTERTAINING THE CHOIR. Program of Entertainment for Montreal and Ottawa Visits.

ENTERTAINING THE CHOIR. Program of Entertainment for Montreal and Ottawa Visits.

ENTERTAINING THE CHOIR. Program of Entertainment for Montreal and Ottawa Visits.

ENTERTAINING THE CHOIR. Program of Entertainment for Montreal and Ottawa Visits.

ENTERTAINING THE CHOIR. Program of Entertainment for Montreal and Ottawa Visits.

ENTERTAINING THE CHOIR. Program of Entertainment for Montreal and Ottawa Visits.

ENTERTAINING THE CHOIR. Program of Entertainment for Montreal and Ottawa Visits.

ENTERTAINING THE CHOIR. Program of Entertainment for Montreal and Ottawa Visits.

ENTERTAINING THE CHOIR. Program of Entertainment for Montreal and Ottawa Visits.

ENTERTAINING THE CHOIR. Program of Entertainment for Montreal and Ottawa Visits.

ENTERTAINING THE CHOIR. Program of Entertainment for Montreal and Ottawa Visits.

