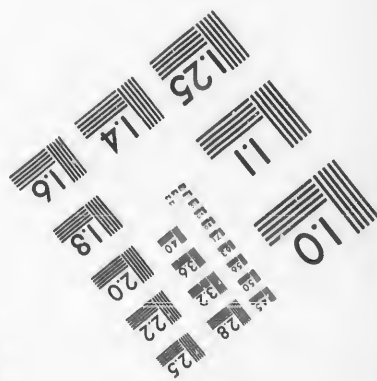
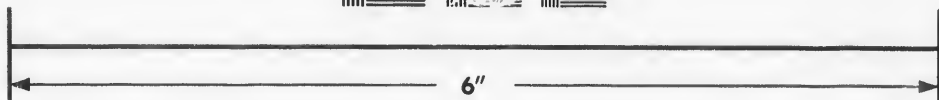
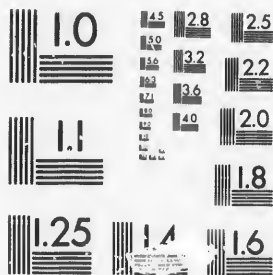


**IMAGE EVALUATION
TEST TARGET (MT-3)**



**Photographic
Sciences
Corporation**

23 WEST MAIN STREET
WEBSTER, N.Y. 14580
(716) 872-4503

Car

**CIHM/ICMH
Microfiche
Series.**

**CIHM/ICMH
Collection de
microfiches.**



Canadian Institute for Historical Microreproductions / Institut canadien de microreproductions historiques

© 1987

Technical and Bibliographic Notes/Notes techniques et bibliographiques

The Institute has attempted to obtain the best original copy available for filming. Features of this copy which may be bibliographically unique, which may alter any of the images in the reproduction, or which may significantly change the usual method of filming, are checked below.

L'institut a microfilmé le meilleur exemplaire qu'il lui a été possible de se procurer. Les détails de cet exemplaire qui sont peut-être uniques du point de vue bibliographique, qui peuvent modifier une image reproduite, ou qui peuvent exiger une modification dans la méthode normale de filmage sont indiqués ci-dessous.

- | | |
|--|--|
| <input checked="" type="checkbox"/> Coloured covers/
Couverture de couleur | <input type="checkbox"/> Coloured pages/
Pages de couleur |
| <input type="checkbox"/> Covers damaged/
Couverture endommagée | <input type="checkbox"/> Pages damaged/
Pages endommagées |
| <input type="checkbox"/> Covers restored and/or laminated/
Couverture restaurée et/ou pelliculée | <input type="checkbox"/> Pages restored and/or laminated/
Pages restaurées et/ou pelliculées |
| <input type="checkbox"/> Cover title missing/
Le titre de couverture manque | <input checked="" type="checkbox"/> Pages discoloured, stained or foxed/
Pages décolorées, tachetées ou piquées |
| <input type="checkbox"/> Coloured maps/
Cartes géographiques en couleur | <input type="checkbox"/> Pages detached/
Pages détachées |
| <input type="checkbox"/> Coloured ink (i.e. other than blue or black)/
Encre de couleur (i.e. autre que bleue ou noire) | <input checked="" type="checkbox"/> Showthrough/
Transparence |
| <input type="checkbox"/> Coloured plates and/or illustrations/
Planches et/ou illustrations en couleur | <input type="checkbox"/> Quality of print varies/
Qualité inégale de l'impression |
| <input checked="" type="checkbox"/> Bound with other material/
Relié avec d'autres documents | <input type="checkbox"/> Includes supplementary material/
Comprend du matériel supplémentaire |
| <input type="checkbox"/> Tight binding may cause shadows or distortion
along interior margin/
La reliure serrée peut causer de l'ombre ou de la
distorsion le long de la marge intérieure | <input type="checkbox"/> Only edition available/
Seule édition disponible |
| <input type="checkbox"/> Blank leaves added during restoration may
appear within the text. Whenever possible, these
have been omitted from filming/
Il se peut que certaines pages blanches ajoutées
lors d'une restauration apparaissent dans le texte,
mais, lorsque cela était possible, ces pages n'ont
pas été filmées. | <input type="checkbox"/> Pages wholly or partially obscured by errata
slips, tissues, etc., have been refilmed to
ensure the best possible image/
Les pages totalement ou partiellement
obscurcies par un feuillet d'errata, une pelure,
etc., ont été filmées à nouveau de façon à
obtenir la meilleure image possible. |
| <input type="checkbox"/> Additional comments:
Commentaires supplémentaires: | |

This item is filmed at the reduction ratio checked below/
Ce document est filmé au taux de réduction indiqué ci-dessous.

10X	14X	18X	22X	26X	30X
<input type="checkbox"/>	<input type="checkbox"/>	<input type="checkbox"/>	<input checked="" type="checkbox"/>	<input type="checkbox"/>	<input type="checkbox"/>
12X	16X	20X	24X	28X	32X

The copy filmed here has been reproduced thanks to the generosity of:

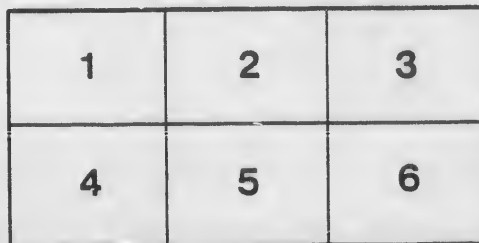
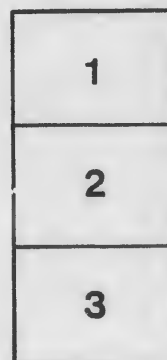
D. B. Weldon Library
University of Western Ontario
(Regional History Room)

The images appearing here are the best quality possible considering the condition and legibility of the original copy and in keeping with the filming contract specifications.

Original copies in printed paper covers are filmed beginning with the front cover and ending on the last page with a printed or illustrated impression, or the back cover when appropriate. All other original copies are filmed beginning on the first page with a printed or illustrated impression, and ending on the last page with a printed or illustrated impression.

The last recorded frame on each microfiche shall contain the symbol \rightarrow (meaning "CONTINUED"), or the symbol ∇ (meaning "END"), whichever applies.

Maps, plates, charts, etc., may be filmed at different reduction ratios. Those too large to be entirely included in one exposure are filmed beginning in the upper left hand corner, left to right and top to bottom, as many frames as required. The following diagrams illustrate the method:



L'exemplaire filmé fut reproduit grâce à la générosité de:

D. B. Weldon Library
University of Western Ontario
(Regional History Room)

Les images suivantes ont été reproduites avec le plus grand soin, compte tenu de la condition et de la netteté de l'exemplaire filmé, et en conformité avec les conditions du contrat de filmage.

Les exemplaires originaux dont la couverture en papier est imprimée sont filmés en commençant par le premier plat et en terminant soit par la dernière page qui comporte une empreinte d'impression ou d'illustration, soit par le second plat, selon le cas. Tous les autres exemplaires originaux sont filmés en commençant par la première page qui comporte une empreinte d'impression ou d'illustration et en terminant par la dernière page qui comporte une telle empreinte.

Un des symboles suivants apparaîtra sur la dernière image de chaque microfiche, selon le cas: le symbole \rightarrow signifie "A SUIVRE", le symbole ∇ signifie "FIN".

Les cartes, planches, tableaux, etc., peuvent être filmés à des taux de réduction différents. Lorsque le document est trop grand pour être reproduit en un seul cliché, il est filmé à partir de l'angle supérieur gauche, de gauche à droite, et de haut en bas, en prenant le nombre d'images nécessaire. Les diagrammes suivants illustrent la méthode.

Clerk Recd *9/18*

EXTRACT FROM THE VOTERS' LISTS ACT.

SECT. VI. The Sheriff shall, immediately upon receipt of his copies, cause one of them to be posted in a conspicuous place in the Court House; the Clerk of the Peace, upon receipt of his copies, shall cause one of them to be posted in a conspicuous place in his office; every Public or Separate School Head Master or Mistress shall in like manner post up one of his or her copies on the door of the school house, and every Postmaster shall post up one of his copies in his post office.

1888

VOTERS' LIST

OF THE

MUNICIPALITY

OF THE

Township of Ektrid.

ABSTRACT.

	NO. OF JURORS.	NO. OF LEGISLATIVE VOTERS.	NO. OF MUNICIPAL VOTERS.
1st E.D.	67	124	124
2nd E.D.	66	100	100
3rd E.D.	67	128	128
4th E.D.	67	101	101
5th E.D.	46	0	89
6th E.D.	64	116	112
7th E.D.	63	121	125
Grand Totals.....	430	754	706

R. D. [unclear]
Sept 12/88

per [unclear]

M

-
- 1 M
 - 2 M
 - 3 S
 - 4 A
 - 5 L
 - 6 G
 - 7 L
 - 8 A
 - 9 A
 - 9½ B
 - 10 B
 - 10½ B
 - 11 C
 - 12 C
-

LIST OF VOTERS

—◆—1888—◆—

MUNICIPALITY OF EKFRID

Schedule of Post Offices.

1 Melbourne	13 Delaware	25 Largie	30½ St. Catharines
2 Mayfair	14 Dutton	25½ Lawrence	30½ St. Clair
3 Strathburn	15 East Saginaw	26 London	31 Strathroy
4 Appin	16 Emerson	26½ Lorne	32 St. Marys
5 Longwood St.	17 Ettric	27 Marksville	33 St. Thomas
6 Glencoe	18 Ewart, U.S.	27½ St. Paul	34 Tacktown
7 Middlemiss	18½ Fugal	28 Minneota, U.S.	34½ Thamesford
8 Alvinston	19 Fort William	29 Mt. Prydges	35 Toronto
9 Askin	19½ Glendale	30 Osman	36 Walkers
9½ Beamsville	20 Glenoak	30½ Petrolia	37 Wardsville
10 Byron	21 Glenwillow	30½ Saginaw	38 Wredman
10½ Bothwell	22 Iona	30¾ Sylvan	39 Windsor
11 Coldstream	23 Kilmartin	30½ Southwold St.	* P.O. name
12 Cowal	24 Kurtch	30¾ Smith's Falls	unknown.

Glencoe, Ont.

THE TRANSCRIPT BOOK AND JOB PRINTING ESTABLISHMENT.

1888.

STATE OF NEW YORK

Comprised
6th R

PART
th

OFFICE OF THE COMMISSIONER OF TAXES AND FINANCE

Jurors	No. on Roll.
	754
	669
J	670
	794
	691
	736
	735
	828
	833
	856
	857
	802
	847
	804
	816
J	685
	799
	779
	778
	780
J	689
	807
J	672
J	671
J	673
J	744

List of Voters.

POLLING SUB-DIVISION No. 1.

Comprising Lots 1 to 3 inclusive, in 7th Range South; Lots 1 to 3 inclusive, in 6th Range South, and Lots 1 to 10 inclusive, in 5th, 4th and 3rd Ranges South.

Polling Station fixed at School House on Lot 4, 4th Range South.

PART 1.--Persons entitled to vote at both Municipal Elections and Elections to the Legislative Assembly.

Jurors	No. on Roll	NAME.	LOT.	Range	P. O.
	754	Ainsley, William	s hf n hf 9	4 rs O	2
	669	Alexander, James	n hf 1	3 rs O	1
j	670	Alexander, Robert C.	n hf 1	3 rs O	1
	794	Amos, John	42 and 43, pt n hf 1	6 rs O	7
j	691	Andrews, Garrick	n pt s hf 9 (and o. p.)	3 rs O	2
	736	Aunnett, Joseph	s hf n hf 4 (and o. p.)	4 rs O	7
	735	Aunnett, Noah	s hf n hf 4 (and o. p.)	4 rs O	7
	828	Bancroft, David	s hvs 7 and 8, pt n hf 1	6 rs O	7
	833	Bancroft, John	16 and w pt 15, pt n hf 1	6 rs O	7
j	856	Battin, Alexander	n pt 1	7 rs O	7
	857	Battin, James	n pt 1	7 rs O	7
j	802	Beach, Lewis	6, 7 and 8, pt n hf 1, n m st	6 rs O	7
	847	Bedford, James	37, pt n hf 1	6 rs O	7
	804	Bolton, Hugh	11, pt n hf 1	6 rs O	7
	816	Brewer, Oscar	27, pt n hf 1	6 rs O	30 ^g
j	685	Brodie, Murdock	n hf 8	3 rs O	2
	799	Burch, William J.	M, pt n hf 1	6 rs O	1
	779	Burdon, Arthur	n hf 1	5 rs O	7
j	778	Burdon, John	n hf 1	5 rs O	7
	780	Burris, William	s hf 1	5 rs O	7
	689	Campbell, Alexander	n hf 9	3 rs O	2
j	807	Campbell, C. B.	14, 15, 16 and 17, pt n hf 1	6 rs T	7
	672	Campbell, Duncan	e hf 2 (and o. p.)	3 rs O	7
	671	Campbell, John D.	s hf 1	3 rs O	1
j	673	Campbell, John R.	w hf 2 (and o. p.)	3 rs O	7
	744	Campbell, Malcolm	6 (and o. p.)	4 rs O	7

2 VOTERS' LIST, 1888—TOWNSHIP OF EKFRID—(P.S.D. No. 1.)

Jurors	No. on Roll.	NAME.	LOT.	Range	P.O.
j	826	Campbell, M. C.	5 and 6, pt n hf 1	6 rs O	7
j	840	Campbell, R. B.	w pt 2 pt n hf 1	3 rs O	7
j	860	Campbell, Robert H.	2 and 3 (and o. p.)	7 rs O	7
j	858	Carroll, John	s pt 1	7 rs O	12
j	859	Carroll, William	s pt 1	7 rs O	12
j	728	Corneil, George	pt s hf 1	4 rs O	7
j	782	Corneil, John B.	3 (and o. p.)	3 rs O	7
j	823	Decow, Daniel	14, 15, 16 & 17 n m s pt n 1/2 (& o. p.)	6 rs O	7
j	853	Dodds, John	e pt n hf 2	6 rs O	7
j	815	Early, Frank	27, pt n hf 1	6 rs T	7
j	682	Fletcher, Donald	n hf 6	3 rs O	1
j	751	Fletcher, Donald C.	s hf 2 (and o. p.)	4 rs O	2
j	679	Fletcher, Hugh	n hf s hf 5	3 rs O	*
j	683	Fletcher, John C.	s hf 7 (and o. p.)	3 rs O	1
j	750	Fletcher, John	s hf 8 (and o. p.)	4 rs O	2
j	752	Fletcher, John, jr.	s hf 8 (and o. p.)	4 rs LS	2
j	734	Gentleman, James	s hf 3	4 rs O	7
j	686	Gowanlock, George	s hf 8	3 rs T	2
j	688	Gowanlock, James	s hf 8	3 rs O	2
j	737	Gowanlock, John	w hf s hf 4	4 rs T	7
j	687	Gowanlock, Robert	s hf 8	3 rs T	2
j	680	Graham, Duncan	n hf s hf 5 (and o. p.)	3 rs T	1
j	831	Graham, Hiram	11, 12, 13, 14 and e pt 15	6 rs O	7
j	684	Graham, John	n hf 7	3 rs O	1
j	681	Graham, William	n hf s hf 5 (and o. p.)	3 rs T	1
j	796	Harrison, Absolom	46 and 47, pt n hf 1	6 rs O	7
j	793	Helmes, David	39, 40 and 41, pt n hf 1	6 rs O	7
j	837	Ingham, Henry	21, 22 and 23, pt n hf 1	6 rs O	7
j	843	Irish, Finlay	w pt e pt n hf 1	6 rs O	7
j	801	Irish, Maylon	5, pt n hf 1	6 rs O	7
j	832	Jeneroux, Frank	w pt 15 and 16, pt n hf 1	6 rs T	7
j	2	Kellock, Charles	n pt 7 (and o. p.)	4 rs T	7
j	677	Kerr, Alexander	s hf 4	3 rs T	1
j	785	Lethbridge, Thomas	s pt 7 (and o. p.)	5 rs O	7
j	786	Lethbridge, William	s pt 7	4 rs T	7

VOTERS' LIST, 1888—TOWNSHIP OF EKFRID—(P.S.D. No. 1.)

Jurors	No. on Roll.	NAME.	LOT.	Range	P.O.
j	738	Lin			
j	809	Lor			
j	839	Luc			
j	838	Luc			
j	741	Luc			
j	855	Luc			
j	797	Ma			
j	790	Mu			
j	789	Mu			
j	798	Mu			
j	787	Mu			
j	812	Mu			
j	788	Mu			
j	810	Me			
j	805	Me			
j	841	Me			
j	791	Me			
j	675	Me			
j	678	Me			
j	733	Me			
j	674	Me			
j	792	Me			
j	756	Me			
j	811	Me			
j	852	Me			
j	757	Me			
j	739	Me			
j	695	Me			
j	835	Me			
j	748	Me			
j	747	Me			
j	690	Me			
j	850	Ra			
j	924	Re			
j	845	Re			
j	118	Re			
j	827	Re			
j	813	Re			
j	730	Se			
j	731	Se			
j	732	Se			
j	814	Se			
j	830	Se			
j	821	Se			
j	822	Se			

VOTERS' LIST, 1888—TOWNSHIP OF EKFRID—(P.S.D. No. 1.) 3

P.O.		Jurors	No. on Roll.	NAME.	LOT.	Range	P.O.
7	7		738	Lindsay, Alexander	w hf s hf 4	4 rs O	33
7	7		809	London, Philip	20 and e hf 21, pt n hf 1	6 rs T	7
12	7	j	839	Lucas, Charles H.	24 and 25, pt n hf 1 (and o. p.)	6 rs O	7
12	7	j	838	Lucas, Charles M.	24 and 25, pt n hf 1 (and o. p.)	6 rs O	7
7	7	j	741	Lucas, John	s hf 5 (and o. p.)	4 rs O	7
	7		855	Lucas, William	s pt 3 (and o. p.)	6 rs O	7
	7	j	797	Mark, James	A, pt n hf 1 (and o. p.)	6 rs T	7
	7	j	790	Mullins, Charles	s hf s hf 9 (and o. p.)	4 rs O	7
	7	j	789	Mullins, Henry	n pt 9 (and o. p.)	5 rs O	7
	7	j	798	Munn, Angus	A, pt n hf 1 (and o. p.)	6 rs O	14
	7	j	787	Murray, Dugald	n hf 8 (and o. p.)	5 rs O	7
	7	j	812	Murray, John	22 and w pt 21, pt n hf 1	6 rs O	*
	7	j	788	Murray, Malcolm	n hf 8 (and o. p.)	5 rs LS	7
	1		810	McArthur, Donald	20 and e hf 21, pt n hf 1	6 rs O	4
	*		805	McArthur, Dugald	12 and 13, pt n hf 1	6 rs T	7
	1	j	841	McArthur, Hugh B.	pt K, pt n hf 7 (and o. p.)	6 rs O	7
	2	j	791	McCallum, Donald	s pt 9	5 rs O	7
LS	2	j	675	McDougald, Daniel	n hf 4 (and o. p.)	3 rs O	1
		j	678	McDougald, John A.	s hf s hf 5 (and o. p.)	4 rs O	1
	7	j	733	McGugan, John	n hf 2 (and o. p.)	4 rs O	1
	2	j	674	McGugan, Malcolm	s hf 3	3 rs O	1
	2	j	792	McKellar, Alexander	10	5 rs O	7
	2	j	756	McLachlan, Daniel	e hf 10	4 rs O	2
	7	j	811	McLachlan, Duncan	22 and w pt 21, pt n hf 1	6 rs T	7
	2	j	852	McLachlan, Isaac	e e cor 1 (and o. p.)	6 rs O	7
	1	j	757	McLachlan, Lachlan	w hf 10	4 rs O	2
	7	j	739	McLean, Donald	n hf 5 (and o. p.)	4 rs O	1
	1	j	695	McLean, Duncan	n hf 10 (and o. p.)	3 rs O	2
	1	j	835	McLean, John	19 and 20, pt n hf 1	6 rs T	7
	7	j	748	McLellan, Bray	n hf 8	4 rs T	2
	7	j	747	McLellan, Henry	n hf 8	4 rs T	2
	7	j	690	McNabb, Peter	n hf 9	3 rs O	2
	7		850	Randall, David L.	n e pt n hf 1	6 rs O	7
	7		924	Reid, Robert	4, pt n hf 1	6 rs O	7
	7		845	Reynolds, Robert H.	32, 33 & 34, pt n hf 1 (& o. p.)	6 rs O	7
	7		118	Richards, George, sen'r	s hf 2	5 rs O	1
	7		827	Robinson, John	n hvs 7 and 8, pt n hf 1	6 rs O	7
	7		813	Russell, William	23 and 24, pt n hf 1	6 rs O	7
	7	j	730	Scott, John A.	n hf 1 (and o. p.)	4 rs O	7
	7	j	731	Scott, Joseph W.	n hf 1 (and o. p.)	4 rs O	7
	1	j	732	Scott, Walter H.	n hf 1 (and o. p.)	4 rs O	7
	7	j	814	Simmens, George	25 and 26, pt n hf 1	6 rs O	7
	7	j	830	Stevenson, William T.	9 and 10, pt n hf 1	6 rs T	7
	7	j	821	Stewart, Charles	e pt s hf 1 (and o. p.)	6 rs O	7
	7	j	822	Stewart, Peter	e pt s hf 1 (and o. p.)	6 rs O	7

4 VOTERS' LIST, 1988—TOWNSHIP OF EKFRID—(P.S.D. No. 1.)

Jurors	No. on Roll.	NAME.	LOT.	Range	P. O.
j	803	Shayer, George	9 and 10, pt n hf 1	6 r a O	7
j	755	Tuffin, George	n hf a hf 9	4 r a T	2
j	693	Tuffin, Samuel	a pt 8 (and o. p.)	5 r a T	2
j	783	Urquhart, Nathaniel	n e pt 7 (and o. p.)	5 r a T	7
	784	Urquhart, William	n e pt 7 (and o. p.)	5 r a O	7
	854	Wade, Ashley	n pt 2	3 r a O	7
	842	Wade, F. H.	J, pt n hf 1 (and o. p.)	6 r a O	7
	851	Walker, Emmerson	e pt n hf 1	6 r a O	7
	849	Walper, Currie	pt n hf 1	6 r a O	7
j	846	Watson, George	35 and 36, pt n hf 1 (and o. p.)	6 r a C	7
	729	Webb, John	s e c o r s hf 1	4 r a O	7
j	817	Wrightman, Allan	28 and 29, pt n hf 1	6 r a T	7
	808	Wrightman, Harvey	18 and 19, pt n hf 1	6 r a O	7

PART 2.--Persons entitled to vote at Municipal Elections only.

Jurors	No. on Roll.	NAME.	LOT.	Range	P. O.
	694	Andrews, Ann	s pt 9 (and o. p.)	3 r a O	26
	818	Brodie, Elizabeth	26 and 20, pt n hf 1	6 r a O	7
	692	Brodie, Florz	s pt 8	5 r a O	6
	781	Cornell, Jessie	n hf 2	5 r a O	1
	3	Gentleman, Mary	n pt 7	4 r a O	7
	795	Middlemiss, Mary	44 and 45, pt n hf 1	6 r a O	25 1/2
	848	Morrison, Elizabeth	38, pt n hf 1 (and o. p.)	6 r a O	7
	753	Mullins, Christina	n hf n hf 9	4 r a O	2
	806	McCrimmon, Mrs.	12 and 13, pt n hf 1	6 r a O	33
	800	Shaw, Emeline	3 and 4, pt n hf 1	6 r a O	17
	829	Stephenson, Margaret	9 and 10, pt n hf 1	6 r a O	17

VOTE

PART

Jurors	No. on Roll.	
	745	Ca
	743	Ca
	925	Gr
	844	H
	742	W

PART 3.--Persons entitled to vote at Elections to the Legislative Assembly only.

	P.O.
O	7
T	3
T	2
T	7
O	7
O	7
O	7
C	7
O	7
C	7
O	7
T	7
O	7

Jurors	No. on Roll.	NAME.	LOT.	Range	P.O.
	745	Oady, Nelson	s hf 2	4 r s Oc	7
	743	Campbell, John B.	6	4 r s WE	7
	925	Griffin, William	5 and 6, pt n hf 1	6 r s Oc	7
	844	Halbut, John	pt n hf 1	6 r s Oc	7
	742	Webster, William	6	4 r s Oc	7

Elections

	P.O.
O	26
O	7
O	6
O	1
O	7
O	25 1/2
O	7
O	2
O	33
O	17
O	17



POLLING SUB-DIVISION No. 2.

Comprising Lots 11 to 16 inclusive, in 4th and 3rd Ranges South, and Lots 9 to 16 inclusive, in 2nd and 1st Ranges South, and in 1st and 2nd Ranges and Gore North.

Polling Station fixed at School House on Lot 13, 1st Range South.

PART 1.--Persons entitled to vote at both Municipal Elections and Elections to the Legislative Assembly.

Jurors	No. on Roll.	NAME.	LOT.	Range or gore	P. O.
j	697	Adams, John	u hf 12	3 r s T	4
j	154	Berdan, George	s hf 15 (and o. p.)	2 r n T	6
j	633	Black, Alexander D.	n hf 11	2 r s O	2
j	634	Black, Donald H.	n hf 11	2 r s O	2
j	581	Braithwait, Robert	s pts 14 and 15 (and o. p.)	1 r s T	4
j	638	Burnett, David	n pt 12	2 r s O	4
j	639	Burnett, George	n pt 12	2 r s O	4
j	766	Campbell, Alexander E.	s pt 14	4 r s O	6
j	47	Campbell, Cameron J.	s hf 9 (and o. p.)	1 r n O	2
j	645	Campbell, Duncan A.	s nf 16	2 r s O	4
j	145	Campbell, Duncan S.	e hf n hf 10	2 r n O	4
j	48	Campbell, Marwood	s hf 9 (and o. p.)	1 r n L S	2
j	58	Corneill, Philip P.	s hf 12	1 r n O	4
j	575	Dobie, James	n w pt n hf 12	1 r s O	4
j	635	Duncanson, Alexander	s hf 11	2 r s O	1
j	573	Eaton, Fred	n pt n hf 12	1 r s O	4
j	54	Elliott, George C.	s hf 11 (and o. p.)	1 r n O	2
j	55	Elliott, Francis B.	s hf 11 (and o. p.)	1 r n L S	2
j	62	Galbraith, Malcolm	s hf 13 (and o. p.)	1 r n L S	4
j	61	Galbraith, Malcolm, sr.	s hf 13 (and o. p.)	1 r n O	4
j	578	Gowanlock, William	w pt s hf 12	1 r s O	4
j	704	Grant, Angus	s hf 15	3 r s O	4
j	705	Grant, Hugh	s hf 15	3 r s L S	4

Jurors	No. on Roll.	
	703	Gran
j	156	Hew
j	627	Hise
j	628	Hise
j	707	Hyn
j	706	Hyn
j	207	Ken
j	759	Kir
j	760	Kir
j	571	Lee
j	758	Ma
j	570	Mi
j	642	Mu
j	643	Mu
j	644	Mu
j	69	Mc
j	582	Mc
j	767	Mc
j	64	Mc
j	70	Mc
j	65	Mc
j	583	Mc
j	584	Mc
j	586	Mc
j	640	Mc
j	762	Mc
j	102	Mc
j	580	Mc
j	63	Mc
j	151	Mc
j	700	Mc
j	52	Mc
j	50	Mc
j	51	Mc
j	56	Mc
j	699	Mc
j	698	Mc
j	153	Mc
j	637	Mc
j	49	Mc
j	144	Mi
j	103	Mi
j	701	Mi

Jurors	No. on Roll.	NAME.	LOT.	Range or gore	P.O.
	703	Grant, Marcus	s hf 15	3 rs O	4
J	156	Heuston, Henry	n hf 15	2 rn O	4
J	627	Hiscock, James	s hf 9	2 rs T	2
J	628	Hiscock, John	s hf 9	2 rs T	2
J	707	Hyndman, Duncan	16	3 rs O	3
J	706	Hyndman, Neil	16	3 rs O	3
J	207	Kershaw, Charles	n pt 10 (and o. p.)	1 rs Oc	2
J	759	Kirkwood, John	16 (and o. p.)	4 rs T	4
J	760	Kirkwood, William	16 (and o. p.)	4 rs T	4
J	571	Lee, James E.	w pt n hf 11 (and o. p.)	1 rs O	2
J	758	Mair, John	s hf 11	3 rs O	7
J	570	Miller, Joseph	pt n hf 10	1 rs O	2
J	642	Murray, James	s hvs 14 and 15	2 rs O	4
J	643	Murray, James, jr.	s hvs 14 and 15	2 rs LS	4
J	644	Murray, John	s hvs 14 and 15	2 rs T	4
J	69	McAlpin, Alexander	e pt s hf 16 (and o. p.)	1 rn O	4
J	582	McAlpin, Donald	n hf 15 (and o. p.)	1 rs T	4
J	767	McAlpin, Donald	15 (and o. p.)	4 rs O	3
J	64	McAlpin, Hugh	e hf s hf 14 (and o. p.)	1 rn O	4
J	70	McAlpin, Hugh H.	w pt s hf 16 (and o. p.)	1 rn O	3
J	65	McAlpin, John	w hf 15	1 rn O	*
J	583	McAlpin, Malcolm	n hf 15 (and o. p.)	1 rs O	4
J	584	McCallum, Archibald	n pt s hvs 14 and 15 (and c. p.)	1 rs O	4
J	586	McCallum, Daniel	n hf 16 (and o. p.)	1 rs O	4
J	640	McCallum, Duncan	s pt 13	2 rs O	4
J	762	McCallum, Neil	n hf 12	4 rs O	4
J	102	McCull, Donald B.	13	gore O	4
J	580	McCull, John D.	n hf 13 (and o. p.)	1 rs O	4
J	63	McCull, John S.	n hf 13 (and o. p.)	1 rn O	4
J	151	McDonald, Alexander S.	n hf 12	2 rn O	4
J	700	McDonald, Archibald	s ht 13	3 rs O	4
J	52	McDonald, Archibald	n hf 10 (and o. p.)	1 rn LS	4
J	50	McDonald, David	n hf 10 (and o. p.)	1 rn O	4
J	51	McDonald, David S.	n hf 10 (and o. p.)	1 rn LS	4
J	56	McDonald, Donald	n hf 11	1 rn O	4
J	699	McDonald, Duncan	s hf 12	3 rs O	4
J	698	McDonald, Peter	s hf 12	3 rs O	6
J	153	McDonald, William	n hf 13	2 rn O	4
J	637	McGugan, Archibald	s hf 12	2 rs O	4
J	49	McIntaggart, Angus	s hf 10 (and o. p.)	1 rn O	2
J	144	McIntaggart, William	s hf 10 (and o. p.)	1 rn O	2
J	193	McKay, David	15 and 16	gore T	4
J	701	McLean, Donald	n hf 14	3 rs O	4

Lots 9 to
anges and

l.
l Elec-
y.

	P. O.
T	4
T	6
O	2
O	2
T	4
O	4
O	4
O	6
O	2
O	4
O	4
LS	2
O	4
O	1
O	4
O	2
LS	2
LS	4
O	4
O	4
O	4
LS	4

8 VOTERS' LIST, 1888—TOWNSHIP OF EKFRID—(P.S.D. No. 2.)

Jurors	No. on Roll.	NAME.	LOT.	Range or gore	P. O.
j	702	McLean, John	n hf 15	3 rs O	4
	630	McLean, John F.	n hf 9 (and o. p.)	2 rs LS	2
j	636	McLean, Samuel	s w pt n hf 12 (and o. p.)	2 rs O	4
	147	McTaggart, Angus	s hf 11	2 ru O	4
	59	McTaggart, John	n hf 12 (and o. p.)	1 rn O	4
	60	McTaggart, Lachlan	n hf 12 (and o. p.)	1 rn O	4
j	152	McTaggart, Lachlin L.	n hf 13	1 rn O	4
j	149	Scates, George	n hf 11 (and o. p.)	2 rn O	4
j	572	Smith, George C.	s hf 11	1 rs O	2
j	576	Smith, Philip C.	e pt s hf 12 (and o. p.)	1 rs O	2
j	140	Suitor, David	e hf n hf 9	2 rn O	4
	568	Switzer, Daniel	n hf 9 (and o. p.)	1 rs LS	2
	567	Switzer, John	n hf 9 (and o. p.)	1 rs O	2
	569	Switzer, William	n hf 9 (and o. p.)	1 rs LS	2
j	66	Thomson, Andrew	n hf 14 (and o. p.)	1 rn T	4
j	67	Thomson, Duncan	n hf 14 (and o. p.)	1 rn T	4
j	763	Tupholme, George	s pt 12	4 rs O	4
j	765	Willy, David	w pt 13	4 rs O	4
j	764	Willy, David J.	e pt 13 (and o. p.)	4 rs O	4
	143	Young, Charles H.	w hf n hf 9	2 rn O	*
	141	Young, George	n pt 16 (and o. p.)	2 rn O	4
	129	Young, Jacob jr.	s hf 14	2 rn O	39
	155	Young, Jacob	s hf 15 (and o. p.)	2 rn O	16
j	142	Young, T. H.	w hf n hf 9	2 rn T	4

PART 2.--Persons entitled to vote at Municipal Elections only.

Jurors	No. on Roll.	NAME.	LOT.	Range or gore	P. O.
	574	Eaton, Eliza	n pt n hf 12	1 rs O	4
	577	Heavenor, Margaret	w pt s hf 12	1 rs O	4
	761	Kirkwood, Elizabeth	16	4 rs O	4
	585	McCallum, Ann	n hf 16 (and o. p.)	1 rs O	4
	581	McCallum, Annabella	cen pts s hvs 14 and 15	1 rs O	4
	696	McColl, Catharine	n hf 11	3 rs O	4
	641	McCallum, Sarah	n hvs 14 and 15	3 rs O	*
	629	McLean, Mary	n hf 9 (and o. p.)	2 rs O	4
	68	Thompson, Mary	n hf 14 (and o. p.)	1 rn O	4

Jurors	No. on Roll.	P. O.
	746	
	57	
	150	
	631	
	632	
	148	
	139	
	53	
	579	
	146	

PART 3.—Persons entitled to vote at Elections to the Legislative Assembly only.

Range or gore		P. O.
3 rs O		4
2 rs LS		2
2 rs O		4
2 rn O		4
1 rn O		4
1 rn O		4
1 rn O		4
2 rn O	4	4
1 rs O	2	2
1 rs O	2	2
2 rn O	4	4
1 rs LS	2	2
1 rs O	2	2
1 rs LS	2	2
1 rn T	4	4
1 rn T	4	4
4 rs O	4	4
4 rs O	4	4
4 rs O	4	4
4 rs O	4	4
rn O	*	
rn O	4	
rn O	39	
rn O	16	
rn T	4	

Jurors No. on Roll.	NAM.	LOT.	Range or gore	P. O.
746	Dobie, William M.	n pt 12	4 rs Oc	4
57	Farrow, George	n hf 11	1 rn Oc	4
150	Franklin, Edward	n hf 11	2 rn WE	4
631	Hathaway, John	e hf n hf 10	2 rs Oc	4
632	Hiscox, Lot	w hf n hf 10	2 rs Oc	2
148	Martin, Alexander	s hf 11	2 rn Oc	4
139	McAdams, John	e hf s hf 9	2 rn Oc	4
53	McKay, John	n hf 10	1 rn Oc	4
579	Oliver, Frank	w pt s hf 12	1 rs Oc	4
146	Warricks, Edward	w hf n hf 10	2 rn Oc	4

Elections

Range or gore	P. O.
rs O	4
rs O	4
rs O	4
rs O	4
rs O	4
rs O	4
rs O	4
rs O	*
rs O	4
rn O	4



POLLING SUB-DIVISION No. 3.

Comprising Lots 17 to 24 inclusive, in 4th, 3rd, 2nd and 1st Ranges South, and in 1st and 2nd Ranges and Gore North.

Polling Station fixed at School House on n hf Lot 21, 1st Range North.

PART 1.--Persons entitled to vote at both Municipal Elections and Elections to the Legislative Assembly.

Jurors	No. on Roll.	NAME.	LOT.	Range or gore	P. O.
j	777	Allan, George	s pt 24		
j	776	Allan, James	n hf 24	4 rs O	3
j	775	Allan, John	n hf 24	4 rs L S	3
				4 rs O	3
	95	Bartlett, Isaac R.	e pt n hf 24	1 rn O	6
j	94	Bartlett, John L.	e pt n hf 24	1 rn T	6
j	181	Beckton, Thomas	n hf n hf 24 (and o. p.)	2 rn O	6
	711	Berdan, David	cen pt s hvs 17 and 18	3 rs O	3
j	712	Berdan, Walter	cen pt s hvs 17 and 18	3 rs O	3
j	660	Coad, George	s hf 22 (and o. p.)	2 rs O	3
j	661	Coad, John	s hf 22 (and o. p.)	2 rs O	3
	658	Coad, Richard	s hf 22 (and o. p.)	2 rs O	3
j	659	Coad, William	s hf 22 (and o. p.)	2 rs O	3
	100	Coulthard, Andrew	s hf 24 (and o. p.)	1 rn O	3
	101	Coulthard, David C.	s hf 24	1 rn L S	3
j	657	Coulthard, Robert J.	n hf 22	2 rs O	3
j	772	Dobie, Christopher	e pt 22 (and o. p.)	4 rs T	3
j	773	Dobie, David jr.	e pt 22 (and o. p.)	4 rs T	3
	774	Dobie, David, sr.	e pt 22 (and o. p.)	4 rs O	3
	770	Dobie, Donald	s pts 22 and 23	4 rs O	3
j	727	Dobie, John A.	n hf 24 (and o. p.)	4 rs O	3
	771	Dobie, William	s pts 22 and 23	3 rs O	3
j	597	Duncanson, Gilbert	w hf s hf 22	4 rs O	3
j	595	Duncanson, Peter	s hf 21 (and o. p.)	1 rs O	3
				1 rs O	3
	608	Ferguson, Robert	s w pt n hf 24	1 rs O	3
j	114	Goff, John	n w cor 22 (and o. p.)	gore O	6

Jurors	No. on Roll.
	110
	111
j	165
j	666
j	158
j	166
j	167
	73
	71
	72
j	587
j	646
	115
j	112
	708
j	654
j	709
	662
j	80
	649
j	83
	647
j	107
j	84
j	167
j	179
j	648
	82
	85
	87
j	598
j	86
j	600
j	590
j	171
j	170
j	173
j	591
j	650
j	592
j	162
j	163
j	189

3.

anges South, and

ange North.

icipal Elec-
sembly.

Range or gore	P.O.
4 rs O	3
4 rs LS	3
4 rs O	3

1 rn O	6
1 rn T	6
2 rn O	6
3 rs O	3
3 rs O	3

2 rs O	3
2 rs O	3
2 rs O	3
2 rs O	3
1 rn O	3
1 rn LS	3
2 rs O	3

rs T	3
rs T	3
rs O	3
rs O	3
rs O	3
rs O	3
rs O	3
rs O	3

rs O	3
re O	6

Jurors	No. on Roll.	NAME.	LOT.	Range or gore	P.O.
	110	Goff, Richard	21 (and o. p.)	gore O	6
	111	Goff, Richard W.	21 (and o. p.)	gore LS	6
j	165	Graham, Duncan	e hf s hf 22	2 rn T	6
j	666	Graham, Duncan	n hf 24	2 rs O	3
j	158	Graham, John, jr.	s hf 18	2 rn O	6
j	166	Graham, John, sr.	e hf s hf 22	2 rn O	6
j	167	Graham, Neil	w hf s hf 22	2 rn O	6
	73	Heuston, Albert D.	pt 17	1 rn LS	6
	71	Heuston, George	pt 17	1 rn O	6
	72	Heuston, Robert W.	pt 17	1 rn LS	6
j	587	Hogg, George	n hf 18 (and o. p.)	2 rn T	6
j	646	Hyndman, Donald	n hf 17 (and o. p.)	2 rs O	3
j	115	Kelly, Charles R.	w hf 24 (and o. p.)	gore O	6
	112	Kuus, David	n pt 22 (and o. p.)	gore O	6
j	708	Lethbridge, George	n hf 17 (and o. p.)	3 rs O	6
	654	Lethbridge, James	s hf 20	2 rs O	3
	709	Lethbridge, John G.	s hf s hf 18 (and o. p.)	2 rs O	3
j	662	May, Edward	n hf 23	2 rs T	3
j	80	Milloy, James	s hf 19 (and o. p.)	1 rn O	3
j	649	McAlpin, Alexander	s hf 17 (and o. p.)	2 rs O	3
	83	McAlpin, Archibald	n hf 19	1 rn LS	6
j	647	McAlpin, Archibald	s hf 17 (and o. p.)	2 rs O	3
j	107	McAlpin, Donald	19 (and o. p.)	gore T	6
	84	McAlpin, James	n hf 19	1 rn LS	6
j	157	McAlpin, James	n hf 17	2 rn O	4
	179	McAlpin, Malcolm D.	n w'cor s hf 24	2 rn O	6
j	648	McAlpin, Neil	s hf 17 (and o. p.)	2 rs O	3
	82	McAlpin, Peter	n hf 19	1 rn LS	6
	85	McBean, Alexander	s hf 20 (and o. p.)	1 rn O	3
	87	McBean, Alexander W.	s hf 21	1 rn O	3
j	598	McBean, George	e hf n hf 23 (and o. p.)	1 rs O	3
	86	McBean, John	pt w hf n hf 20	1 rn O	6
	600	McBean, William	w hf n hf 23	1 rs O	3
j	590	McCallum, Christopher	s hf 17 (and o. p.)	1 rs O	4
	171	McCallum, Edward	e hf n hf 23	2 rn O	6
	170	McCallum, Gilbert	e hf n hf 23	2 rn O	6
	173	McCallum, Peter	w hf n hf 23	2 rn O	6
	591	McColl, Alexander	s hf 19 (and o. p.)	1 rs O	3
	650	McColl, John	n hf 18 (and o. p.)	2 rs O	3
	592	McEacharn, Archibald	n hf 20 (and o. p.)	1 rs O	3
	162	McEacharn, David	20	2 rn O	6
	163	McEacharn, Donald	20	2 rn LS	6
	169	McEacharn, Donald	s hf 23	2 rn O	6

12 VOTERS' LIST, 1888—TOWNSHIP OF EKFRID—(P.S.D. No. 3.)

Jurors	No. on Roll.	NAME.	LOT.	Range or gore	P. O.
j	653	McEacharn, Duncan	w hf n hf 20 (and o. p.)	2 rs O	3
j	172	McEacharn, John	w hf n hf 23	2 rn T	6
j	596	McIntaggart, Donald	n hf 22	1 rs O	2
j	667	McIntyre, Dugaid	s hf 24	2 rs T	3
j	164	McKellar, Alexander	n pt 21 (and o. p.)	2 rn O	6
j	108	McKellar, Archibald	19	gore O	6
j	109	McKellar, John	20 (and o. p.)	gore O	6
j	656	McKenzie, Alexander R.	s hf 21	2 rs O	3
j	90	McKenzie, Daniel	s hf 22	1 rn T	3
j	664	McKenzie, Finlay	n hf 23	2 rs O	3
j	99	McKenzie, Kenneth	w pt n hf 24	1 rn O	3
j	91	McKenzie, William	s hf 22	1 rn O	3
j	655	McLean, Donald K.	n hf 21	1 rn O	3
j	74	McNabb, Alexander	pt s hf 17	2 rs O	3
j	601	McRae, Christopher	s hf 23	1 rn T	3
j	97	McRae, Donald	n w cor 24	1 rs O	3
j	726	McRae, Donald K.	n hf 23 (and o. p.)	1 rn O	6
j	607	McRae, Duncan H.	a w cor n hf 24 (and o. p.)	3 rs O	3
j	602	McRae, Duncan R.	s hf 23	1 rs O	3
j	725	McRae, Duncan K.	s hf 22 (and o. p.)	1 rs LS	3
j	606	McRae, Hugh	n w cor n hf 24 (and o. p.)	3 rs O	3
j	665	McRae, Philip	s hf 23	1 rs O	3
j	106	Penfound, Henry	17 and 18	gore T	6
j	713	Pool, Christopher	19 (and o. p.)	4 rs O	3
j	715	Pool, Christopher, jr.	19 (and o. p.)	4 rs O	3
j	714	Pool, James	19 (and o. p.)	4 rs O	3
j	768	Pool, William G.	s pts 17 and 18 (and o. p.)	4 rs O	3
j	717	Searle, John P.	s hf s hf 20 (and o. p.)	3 rs O	3
j	175	Siddall, Joseph M.	s hf 24	2 rn LS	6
j	176	Siddall, Lorenzo	s hf 24	2 rn LS	6
j	174	Siddall, William	s hf 24	2 rn O	6
j	77	Smith, Thomas	w hf n hf 19 (and o. p.)	1 rs O	3
j	651	Squire, E. W.	e hf 19	2 rs O	3
j	719	Squire, Henry	n pt 20	3 rs O	3
j	720	Squire, James E.	n pt 20	3 rs O	3
j	161	Squire, John	w hf n hf 19	2 rn O	6
j	652	Squire, J. R.	w hf 19	2 rs O	3
j	160	Squire, Samuel C.	e hf n hf 19	2 rn O	6
j	98	Steinhoff, Jacob	w pt n hf 24	1 rn O	3
j	168	Strachan, Thomas	n hf 22 (and o. p.)	2 rn O	6
j	89	Sutherland, Owen	pt n hf 21 (and o. p.)	1 rn O	3
j	88	Sutherland, William R.	pt n hf 21 (and o. p.)	1 rn O	3
j	769	Tait, James	21 (and o. p.)	4 rs O	3
j	722	Tait, William	n hf 21 (and o. p.)	3 rs O	3
j	93	Taylor, Archibald J.	n hf 23	1 rn LS	6
j	92	Taylor, Duncan	n hf 23	1 rn O	6
j	180	Thompson, John	s hf n hf 24 (and o. p.)	2 rn O	6

Jurors	No. on Roll.
j	604
j	605
j	723
j	159
	721
	96
j	593
	594

PART

Jurors	No. on Roll.
	589
	79
	603
	115
	81
	588
	668
	75
	76

PART

Jurors	No. on Roll.
	710
	177
	716
	724
	718

Jurors	No. on Roll.	NAME.	LOT.	Range or gore	P. O.
j	604	Trestain, John A.	s hf 24 (and o. p.)	1 rs O	3
	605	Trestain, John A., jr.	s hf 24	1 rs LS	3
j	723	Trestain, William	n hf 22	3 rs O	3
	159	Twiss, Robert C.	s hf 19	2 rn O	6
	721	Webber, John	e pt n hf 21 (and o. p.)	3 rs T	3
	96	Whitlock, Richard	cen pt n hf 24	1 rn O	6
j	593	Willy, Bray	n hf 21 (and o. p.)	1 rs T	3
	594	Willy, Scott	n hf 21	1 rs O	3

PART 2.--Persons entitled to vote at Municipal Elections only.

Jurors	No. on Roll.	NAME.	LOT.	Range or gore	P. O.
	589	Blue, Sarah	cen pt n hf 17	1 rs O	3
	79	Galbreath, Mary	e hf s hf 18	1 rn O	6
	603	Graves, Hannah	w pt n hf 24	1 rs O	3
	115	Kelly, Rhoda	e hf 24	gore O	6
	81	McAlpine, Mary	n hf 19	1 rn O	6
	588	McColl, Ann	n hf 18	1 rs O	4
	668	McIntyre, Catharine	s hf 24	2 rs O	6
	75	Sinclair, Barbara	e hf n hf 18	1 rn O	6
	76	Sinclair, Nancy	w hf n hf 18	1 rn O	6

PART 3.--Persons entitled to vote at Elections to the Legislative Assembly only.

Jurors	No. on Roll.	NAME.	LOT.	Range or gore	P. O.
	710	Atkinson, John	s hf s hf 18	2 rs WE	3
	177	Dobson, Robert	s hf 24	2 rn WE	6
	716	McNabb, Donald	n hf 19	3 rs Oc	3
	724	Webber, Joseph	n hf 22	3 rs Oc	3
	718	Webber, Thomas A.	n pt s hf 20	3 rs Oc	3

POLLING SUB-DIVISION No. 4.

Comprising Lots 1 to 8 inclusive, in 2nd and 1st Ranges South, and in 1st and 2nd Ranges North, and South half of 1st Concession North.

Polling Station fixed at School House on s hf Lot 4, 1st Range North.

PART 1.--Persons entitled to vote at both Municipal Elections and Elections to the Legislative Assembly.

Jurors	No. on Roll.	NAME.	LOT.	Range or Con	P. O.
	566	Archer, Peter	n w pt n hf 8	1 r s O	2
	566	Ardies, T. A.	n w pt n hf 8 (and o. p.)	1 r s O	2
j	182	Beattie, William A.	s hf 1	l con O	5
j	550	Beaumont, Robert	n pt n hf 1	1 r s O	1
	21	Begg, James G.	s pt s hf 1 (and o. p.)	1 r n O	1
j	554	Buckingham, Alfred	2	1 r s T	1
	563	Campbell, John E.	7	1 r s O	2
j	1	Carter, Amos	n hf 1 (and o. p.)	1 r n O	1
j	609	Clark, Adam	n hf 1	2 r s O	1
j	17	Clark, Alexander	pt s hf 1	1 r n O	1
j	206	Clark, Edward	n w pt s hf 8	l con T	4
j	18	Clark, James	pt s hf 1	1 r n O	1
j	610	Clark, William A.	n hf 1	2 r s C	1
	20	Cooper, James	n e cor s hf 1	1 r n O	1
	7	Cooper, John	3, 6 and 15, pt s hf 1	1 r n T	1
	9	Cooper, Thomas H.	3, 6 and 15, pt s hf 1	1 r n T	1
j	555	Corneil, John M.	2 and 3	1 r s O	26
j	564	Cowan, David	n hf 8 (and o. p.)	1 r s O	2
j	134	Cowan, John C.	w hf s hf 7	2 r n O	2
j	28	Douglas, Alexander	n hf 4 (and o. p.)	1 r n O	1
j	4	Duncanson, Donald	vill. lots 1 and 2, pt s hf 1	1 r n O	1
j	45	Dundon, John.	w pt s hf 8 (and o. p.)	1 r n O	2
	133	Earhart, Robert	s w cor e hf s hf 8	2 r n T	2
j	132	Fairecloth, George	n pt 5	2 r n O	1
j	552	Fletcher, Alexander	n pt n hf 1	1 r s O	1

Jurors
No. on Roll
10
622
119
189
188
626
625
3
5
16
135
125
27
557
558
25
24
23
46
34
35
128
36
621
620
202
203
15
618
617
619
615
676
29
611
39
33
41
613
40
562
42
612

Jurors	No. on Roll.	NAME.	LOT.	Range or Con	P.O.
j	10	Gordon, Thomas	3, 6 and 15, pt s hf 1	1 rn O	31
j	622	Graham, David	s w pt 7	2 rs O	1
j	119	Grifith, George	centre part 1	2 rn O	1
j	189	Haggerty, Daniel	e hf s hf 2 (and o. p.)	1 con LS	1
j	188	Haggarty, John	e hf s hf 2 (and o. p.)	1 con O	1
j	626	Hardy, Robert	n pt 8 (and o. p.)	2 rs O	2
j	625	Hardy, Thomas	s pt 8	2 rs O	1
j	33	Harvey, Frank	1 and 2, pt s hf 1	1 rn T	1
j	5	Hearns, Thomas	w hf 5, pt s hf 1	1 rn O	1
j	16	Henderson, James S.	residence vil. lot 15, pt s hf 1	1 rn Inc	1
j	135	Horn, John	e hf n hf 7	2 rn O	4
j	125	Howe, James	n hf 2	2 rn O	9
j	27	Hyndman, Donald	s hf and w pt n hf 3	1 rn O	1
j	557	Hyndman, Gilbert, sr.	n hf 5 (and o. p.)	1 rs O	1
j	558	Hyndman, Gilbert	n hf 5 (and o. p.)	1 rs O	1
j	25	Johnson, Archibald	s hf 6 (and o. p.)	2 rs O	1
j	24	Johnson, Donald	w hf n hf 2 (and o. p.)	1 rn T	1
j	23	Johnson, John	w hf n hf 2 (and o. p.)	1 rn T	1
j	46	Jones, Thomas	e hf s hf 8 (and o. p.)	1 rn O	2
j	34	Lockwood, James	6 (and o. p.)	1 rn O	1
j	35	Lockwood, James, jr.	s hf and pt n hf 1	1 rs T	1
j	128	Lockwood, Wallace	4 (and o. p.)	2 rn O	1
j	36	Lockwood, Warren	s hf and pt n hf 1	1 rs T	1
j	621	Mather, Henry	s e pt 7	2 rs O	1
j	620	Mather, William	s e pt 7	2 rs O	1
j	202	Miles, Edward J.	s hf 6 (and o. p.)	1 con T	4
j	203	Miles, Harry	s e pt s hf 7	1 con O	33
j	15	McAlpine, Alexander	11, pt s hf 1	1 rn T	1
j	618	McDougald, Alex'r, sr.	s pt 5	2 rs O	1
j	617	McDougald, Alexander	n hf s hf 4 (and o. p.)	2 rs O	1
j	619	McDougald, Alex'r P.	n pt 5 (and o. p.)	2 rs O	1
j	615	McDougald, Archibald	n hf 4	2 rs O	1
j	676	McDougald, Arch'd, sr.	s hf s hf 4	2 rs O	1
j	29	McFarlane, Malcolm	s hf 4	1 rn O	1
j	611	McLachlin, Allan	e hf 2	2 rs O	1
j	39	McLean, Alexander	w pt 6 (and o. p.)	1 rs O	1
j	33	McLean, Allan	n hf 5	1 rn O	1
j	41	McLean, C. B.	w pt 6 (and o. p.)	1 rs LS	1
j	613	McLean, Donald C.	s hf 3 (and o. p.)	2 rs O	1
j	40	McLean, Duncan	w pt 3 (and o. p.)	1 rs LS	1
j	562	McLean, Gilbert	e pt 6 (and o. p.)	1 rs O	1
j	42	McLean, John T.	w pt 6 (and o. p.)	1 rs LS	1
j	612	McLean, Malcolm	w hf 2	2 rs O	1

4.
and in 1st and
North.
Municipal Elec-
tion.

Range or Con	P.O.
rs O	2
rs O	2
con O	5
rs O	1
rn O	1
rs T	1
rs O	2
rn O	1
rs O	1
rn O	1
con T	4
rn O	1
rs O	1
rn O	1
rn T	1
rs O	26
rs O	2
rn O	2
rn O	1
rn O	1
rn O	2
rn T	2
rn O	1
rs O	1

10 VOTERS' LIST, 1888—TOWNSHIP OF EKFRID—(P.S.D. No. 4.)

VOTE

Jurors	No. on Roll.	NAME.	LOT.	Range or Con	P. O.
	130	McNeil, Alexander	s pt 5	2 rn O	1
	624	McNeil, Daniel	s pt 8	2 rs T	2
	623	McNeil, John	s pt 8	2 rs T	2
	126	McNeil, John	3	2 rn O	1
	196	McNulty, B. J.	s hf 4	1 con T	1
	34	McNulty, Frank	1 and 2, pt s hf 1	1 rn T	1
	193	McNulty, Patrick	s hf 3	1 con O	1
	197	McNulty, Thomas E.	s hf 4	1 con T	1
	190	McNulty, William	w hf s hf 2	1 con O	1
	559	McRae, Duncan	s hf 4 (and o. p.)	1 rs O	1
	553	Nellis, Willoughby	pt n hf 1	1 rs O	1
	22	Norsworthy, Charles	e pt s hf 2	1 rn O	1
	124	Philps, Albert	n hf 2	2 rn T	5
	123	Philps, James	n hf 2	2 rn T	5
	120	Philps, Walter	e pt n hf 1	2 rn O	5
	183	Rae, Jacob	n pt s hr 1	1 con T	5
	8	Richards, E.	3, 6 and 15, pt s hf 1	1 rn T	1
	117	Richards, George	s w pt 1	2 rn O	1
	44	Saxon, George	n hf 7 (and o. p.)	1 rn O	2
	11	Sinclair, Daniel	{ 7, 8, 9, 16, 17 & 18, pt s hf 1 } (and o. p.)	1 rn O	1
	551	Spoonenburg, G. W.	e pt n hf 1	1 rs O	1
	30	Stevenson, Allan	s hf 5 (and o. p.)	1 rn O	1
	32	Stevenson, Alexander	s hf 5	1 rn O	1
	31	Stevenson, Archie	s hf 5	1 rn O	1
	131	Stevenson, George	n pt 5	2 rn T	1
	561	Stevenson, James	s hf 5	1 rs T	1
	560	Stevenson, William	s hf 5	1 rs T	1
	122	Stocking, David S.	2 (and o. p.)	1 rs T	1
	6	Stothers, James	pt 5, pt s hf 1	1 rn O	1
	136	Tanner, George	w hf n hf 7	2 rn O	4
	137	Tanner, Joseph	w hf n hf 7	2 rn LS	4
	26	Torrence, J. W.	J hf w hf s hf 2	1 rn O	1
	14	Trayte, George	n e cor n hf 1	1 rs O	1
	121	Wellman, James	n e pt s hf 1	2 rn O	1
	556	Wilkinson, Robert	3	1 rs T	1

PART 2

Jurors	No. on Roll.	
	138	Al
	19	Cl
	12	M
	740	M
	195	M
	184	Ra

PART

Jurors	No. on Roll.	
	127	Mc
	616	Mc
	198	O'
	43	Ta

POLLING SUB-DIVISION No. 5.

Comprising Lots 1 to 8 inclusive, in 2nd, 3rd and North half of 1st Concession, and Lots 1 to 9 inclusive, in 4th and 5th Concessions.

Polling Station fixed at Henry Rimelie's House on w hf n hf Lot 4, Con. 3.

PART 1.--Persons entitled to vote at both Municipal Elections and Elections to the Legislative Assembly.

Jurors	No. on Roll.	NAME.	LOT.	Con.	P. O.
	513	Black, Alexander	n hf 7	4	*
j	293	Brown, James	w pt n hf 2	2	5
j	292	Brown, Joseph	e pt n hf 2 (and o. p.)	2	5
	444	Burnell, John	n hf n hf 8	4	4
j	496	Carman, Isaac	n hf 3	5	30
j	380	Chisholm, George	w hf n hf 5	3	4
	382	Chisholm, Hugh B.	s hf 6	3	4
j	383	Chisholm, Walter	n hf 6 (and o. p.)	3	4
	381	Chisholm, William	s hf 6	3	4
j	185	Coulter, James	n hf 1	1	5
	507	Cowan, Alexander	s hf 9	5	4
j	497	Davies, Howard	e pt n hf 4 (and o. p.)	5	30
	302	Degraw, John	n hf 5	2	31
	191	Dillion, John	w pt n hf 2 (and o. p.)	1	5
j	192	Dillion, John, jr.	w pt n hf 2 (and o. p.)	1	5
j	374	Ebbitts, John	w hf n hf 3	3	5
	441	Essey, James	e hf s hf 7	4	4
	442	Essey, Thomas	e hf s hf 7	4	30
j	494	Farrow, Isaac	e hf s hf 3	5	30
j	495	Farrow, William	w hf s hf 3	5	20
	430	Foster, James	e hf s hf 3	4	34
j	498	Foster, William	w hf s hf 4	5	5
j	297	Fowler, Alonzo	e hf s hf 3 (and o. p.)	3	5
	194	Galahar, John, sr.	n e pt n hf 3 (and o. p.)	1	5
j	200	Galahar, John, jr.	e hf s hf 4	1	5

Jurors	No. on Roll.	
j	435	F
	371	F
	370	F
	289	F
	288	F
j	490	F
j	301	J
	378	J
	504	K
	500	K
	372	K
	433	K
	373	K
	434	K
	501	L
	427	L
j	446	L
	445	L
	426	L
	505	L
	493	L
j	319	L
	439	M
	508	M
	506	M
	186	M
	429	M
j	428	M
j	300	M
j	201	N
	375	N
	457	N
j	431	Pa
	487	Pa
	368	Pi
	440	Pi
	369	Ra

VOTERS' LIST, 1888—TOWNSHIP OF EKFRID—(P.S.D. No. 5.) 19

Juniors	No. on Roll.	NAME.	LOT.	Cor.		P.O.
j	435	Hardy, Josiah	w hf n hf 4	4	O	5
	371	Helm, Gustave	w hf s hf 3 (and o. p.)	3	LS	5
	370	Helm, John	w hf s hf 3 (and o. p.)	3	O	5
	289	Hixon, Frank	e pt n hf 1	2	T	20
	288	Hixon, Levi	e pt n hf 1	2	O	20
j	490	Howe, Joseph	n pt 1	5	C	30
j	301	Jeffrey, George	n hf 5	2	T	4
	378	Jeffrey, John A.	w hf w hf s hf 5 (and o. p.)	5	O	4
	504	Kittlewell, Darins	n hf 7	5	T	30
i	500	Kittlewell, George	s hf 5	5	O	50
j	372	Klemm, George	o lf s hf 4	3	O	5
	433	Klemm, Henry	n hf 3	4	T	5
	373	Klemm, John	w hf s hf 4	3	O	5
j	434	Klemm, Philip	n hf 3	4	O	5
	501	Laughton, David C.	hf 6	5	O	30
	427	Laughton, George	s hf 1 (and o. p.)	4	O	30
j	446	Laughton, Edward A.	s hf 9 (and o. p.)	4	O	30
	445	Laughton, John E.	s hf 9 (and o. p.)	4	O	30
	42C	Laughton, John S.	s hf 1 (and o. p.)	4	T	30
	505	Laughton, Joseph	n hf 7	5	O	30
	49C	Laughton, Samuel B.	n hf 2	5	O	30
j	319	Lotan, Joseph	n hf 9 (and o. p.)	4	O	4
	439	Mills, William D.	e hf n hf 6	4	O	20
	508	Morrow, James	s hf 9	5	O	31
	506	McArthur, Angus	n hf 8	5	O	21
	186	McKay, John	e pt n hf 1	1	O	5
j	429	McKee, David J.	n hf 1	4	C	5
	428	McKee, James	n hf 1	4	O	5
j	300	McVicar, John A.	s hf 6	2	O	5
j	201	Neve, Charles	w b ^c n hf 4	1	O	5
	375	Nicholas, Lawrence	e hf n hf 4	3	O	19 ³ / ₈
	437	Nicols, William	w hf s hf 5	4	O	30 ³ / ₈
j	431	Parker, Duncan	n pt 2	4	T	5
j	487	Patterson, Thomas	e pt s pt 1	5	O	5
	368	Pierce, Uriah	e hf n hf 2	3	O	20
	440	Pierce, William	w hf n hf 5	4	O	5
	369	Ramey, Casper	w hf n hf 2	3	O	5

Concession,
Con. 3.
pal Elec-
bly.

	P.O.
	*
O	5
O	5
O	4
O	30
O	4
O	4
O	4
O	4
O	4
O	5
T	4
O	30
O	31
O	5
O	5
O	5
O	4
O	30 ³ / ₈
O	30
T	20
O	34 ¹ / ₂
O	5
O	5
O	5
O	5

20 VOTERS' LIST, 1888—TOWNSHIP OF EKFRID—(P.S.D. No. 5.)

Jurors	No. on Roll.	NAME.	LOT.	Con.		P. O.
j	364	Ramey, David	s hf 1 (and o. p.)	3	T	5
j	366	Ramey, George	w hf n hf 1	3	O	5
j	363	Ramey, James	s hf 1 (and o. p.)	3	O	20
j	492	Ramey, John	w pt s hf 2	5	O	5
j	436	Ramey, Thomas W.	e hf s hf 5	4	O	5
j	365	Ramey, Samuel	s hf 1 (and o. p.)	3	T	5
j	362	Ramey, William	e hf n hf 1	3	O	20
j	376	Rimelie, Henry	w hf n hf 4 (and o. p.)	3	O	5
j	377	Rimelie, Henry, jr.	w hf n hf 4 (and o. p.)	3	LS	5
	503	Sifton, Joseph	s hf 7	5	O	30
	438	Sifton, William	e hf s hf 6	4	O	31
j	204	Strachan, Charles	n hf 7	1	O	4
j	298	Sutton, David	e hf e hf s hf 4	2	O	5
j	299	Sutton, Thomas	w hf e hf s hf 4 (and o. p.)	2	O	5
j	305	Sweeney, John	n hf 8	2	LS	4
	295	Warren, Albert	s hf 3	2	O	5
	296	Warren, Edwin	s hf 3	2	O	5
	291	Warren, Henry	s hf 2	2	O	5
	488	Webber, John	w pt s hf and pt n hf 1	5	O	5
	489	Webber, William	w pt s hf and pt n hf 1	5	O	5
	443	Wendell, William	w hf s hf 7	4	O	4
	379	Woods, George	n hf e hf n hf 5	3	O	4
	367	Woodward, Alfred	w pt s hf 2	3	O	31
j	499	Woolcock, Thomas	w pt n hf 4	5	O	30

PART 2.--Persons entitled to vote at Municipal Elections only.

Jurors	No. on Roll.	NAME.	LOT.	Con.		P. O.
	208	Farroll, Lucy	n hf 8 (and o. p.)	1	T	4
	432	Hardy, Annie	n pt 2	4	O	5
	491	Ramey, Sarah	e pt s hf 2	5	O	5

PART 3.--Persons entitled to vote at Elections to the Legislative Assembly only.

Jurors	No. on Roll.	NAME.	LOT.	Con.		P. O.
	294	Kelly, Charles	w pt n hf 2	2	Oc	5
	502	Marshall, Frank	n hf 6	5	Oc	30
	303	McDermid, Andrew	n hf 5	2	Oc	4
	187	Scott, William	n hf 1 R. R. land	1	Oc	5

VOT

Comprisin
to 15

PART 1
tion

Jurors	No. on Roll.	
j	521	As
j	327	Bl
j	384	Bl
j	326	Bl
j	447	Br
j	396	Br
j	38	Br
j	256	Br
j	328	Br

j	241	Ca
j	242	Ca
j	329	Ca
j	211	Co
j	449	Co
j	457	Co
j	226	Cr
j	227	Cr
j	232	Cu

j	459	Ed
j	222	En

j	210	Far
j	209	Far
j	455	Fle

j	461	Gal
j	397	Gal

22 VOTERS' LIST, 1888—TOWNSHIP OF EKFRID—(S.D. No. 6.)

Jurors	No. on Roll.	NAME.	LOT.	Con.		P. O.
j	249	Galbreath, Neil	B 5 and 6, pt n hf 13	1	O	6
j	454	Gibbs, Ellis	s pt 12	4	O	4
j	620	Gough, Curtis	e pt n hf 13	5	O	4
	234	Hamilton, Archibald	pt n hf 12 on street	1	O	24
	233	Hamilton, Duncan	pt n hf 12 on street	1	T	4
j	522	Henry, William R.	e hf n hf 14 (and o. p.)	5	O	21
	309	Hodgson, William	n hf 9	2	LS	4
	235	Holmes, William	B 3,4,11 & 12, pt n hf 12 (& o. p.)	1	O	4
j	322	Hughes, George	w pt s hf 14	2	O	4
j	227	Hughes, John A.	A 3 and 10, pt n hf 12	1	O	4
	220	Hughes, Nathaniel	D 2 and 3, pt n hf 12	1	O	4
j	451	Irvin, Thomas B.	n hf 10	4	O	4
j	516	Johnson, Archibald	n hf s hf 12 (and o. p.)	5	O	4
j	398	Johnson, William	s hf 14	3	O	4
	450	Kelly, Horace	w hf s hf 10	4	O	4
j	400	Lotan, Joseph	n hf 14	3	T	4
	458	Lotan, Robert	w hf s hf 14 (and o. p.)	4	O	4
j	399	Lotan, Samuel	e hf s hf 14 (and o. p.)	4	O	4
j	306	Marshall, James	a hf s hf 9	2	O	4
j	315	Martin, Robert	n hf 12	2	O	4
j	321	May, William	n hf e hf n hf 13	2	O	4
j	231	Milburn, Walter	B 1 and w hf 14, pt n hf 12	1	O	4
j	323	Mitchell, Joseph	s e cor s hf 14	2	O	4
j	524	Moore, Peter	e hf n hf 15	5	O	4
j	320	Morrison, Matthew	s hf e hf n hf 13	2	O	4
j	250	Mullins, John	n e cor pt n hf 13	1	O	4
j	388	Murray, Donald	s hf 10 (and o. p.)	3	O	4
j	389	Murray, John	s hf 10 (and o. p.)	3	LS	4
j	452	McArthur, David	s hf 11	4	O	4
j	255	McDonald, John S.	s hf 14	1	O	4
j	247	McEacharn, John	B 4 and 7, pt n hf 13 (and o. p.)	1	O	4
j	256	McFarlane, Neil	n hf 14	1	O	4
j	316	McFie, James	s pt 13 (and o. p.)	2	O	4
j	313	McGill, George	e hf n hf 11	2	O	4
j	386	McGill, John	e hf n hf 9	3	O	4
j	230	McGrigor, Abraham	A 6, pt n hf 12	1	O	4
j	224	McGrigor, Charles	A 1, pt n hf 12	1	O	4
j	387	McIntyre, Archibald	s hf 9 (and o. p.)	3	O	4
j	311	McIntyre, James	n hf 10	2	LS	4

VOTE

Jurors	No. on Roll.	
j	310	Mc
j	453	Mc
j	519	Mc
j	512	Mc
j	239	Mc
j	307	Mc
j	317	Mc
j	246	Mc
j	215	Mc
j	390	Mc
j	392	Mc
j	312	Mc
j	395	Mc
j	243	Mc
j	217	Mc
j	240	Mc
j	214	Pa
j	213	Pa
j	212	Pa
j	259	Qu
j	456	Ra
j	252	Ra
j	254	Ra
j	518	Ri
j	517	Ri
j	229	Ro
j	225	Si
j	244	Si
j	511	St
j	510	St
j	515	St
j	514	St
j	221	Su
j	314	Ta
j	238	Th
j	260	Th
j	394	Th
j	523	To
j	509	To
j	258	W
j	318	W

VOTERS' LIST, 1888—TOWNSHIP OF EKFRID—(P.S.D. No. 6.) 23

P.O.	J.P.	No. on Roll.	NAME.	LOT.	Cont.	P.O.
6		310	McIntyre, John	n hf 10	2 O	4
4		453	McIntyre, John	n hf 11	4 O	4
4		519	McIntyre, Peter	s pt s hf 13	5 O	4
		512	McIntyre, Solomon	s pt 11	5 O	4
24		239	McIntyre, William	w hf s hf 9	2 O	4
4		307	McIntyre, William	D 5, 6, 9, 10, 11, pt n hf 12	1 O	4
4		317	McKenzie, George	s e cor s hf 13	2 O	4
4		246	McLean, Hugh	A 12, pt n hf 13	1 O	4
4		215	McMaster, Alexander	e hf n hf 11 (and o. p.)	1 O	4
4		390	McMaster, Alexander	n hf 10 (and o. p.)	3 O	4
4		392	McMaster, Angus	11 (and o. p.)	3 O	4
4		312	McMaster, James	s hf 11 (and o. p.)	2 O	4
4		395	McMurphy, John	s hf s hf 13	3 O	4
4		243	McNaughton, Forbes	B 1, 2, 3, 8, 9 & 10, pt n hf 13	1 T	4
4		217	McNaughton, Robert	C 5, 6, 7, 8, 9 & 10, pt n hf 12	1 O	4
4		240	McTaggart, Donald	s pt 12	1 O	4
4		214	Patterson, Alexander	s hf 11	1 O	4
4		213	Patterson, Archibald	n hf 10	1 O	4
		212	Patterson, Malcolm	s hf 10	1 O	4
4		259	Quick, Lewis	e hf n hf 15	1 O	4
4		456	Ramsay, Hamilton	s pt s hf 13	4 O	4
4		252	Rankin, Alexander	n pt 13	1 O	4
4		254	Rankin, Hugh	s pt n hf 13 (and o. p.)	1 O	4
		518	Riley, George	w hf n hf 12	5 O	21
4		517	Riley, William	e hf n hf 12	5 O	21
4		229	Rosser, Thomas	A 4 and 5, pt n hf 12	1 O	4
4		225	Simpson, John	A 2, 11 and 12, pt n hf 12	1 O	4
4		244	Sinclair, John	A 10, pt n hf 13 (and o. p.)	1 O	4
4		511	Storing, Adam	s hf 10	5 O	4
4		510	Storing, Nelson	s hf 10	5 O	4
4		515	Stringer, Henry	s hf s hf 12	5 O	4
4		514	Stringer, William H.	s hf s hf 12	5 O	4
4		221	Suitor, James	B 9 and 10, pt n hf 12	1 O	4
4		314	Taylor, William D.	pt s hf 12	2 O	4
4		238	Thomson, Daniel	E 6, pt n hf 12	1 O	4
4		260	Thomson, Duncan	w hf n hf 15	1 O	4
4		394	Thomson, George	e pt s hf 13	3 O	4
4		523	Towers, Benjamin	w hf n hf 14	5 O	21
4		509	Towers, Charles	n hf 10 (and o. p.)	5 O	21
4		258	Webster, Robert	s hf 15	1 O	4
4		318	Whittaker, William	s e cor s hf 13	2 O	4

PART 2.--Persons entitled to vote at Municipal Elections only.

Jurors No. on Roll.	NAME.	LOT.	Con.		P.
460	Galbreath, Jane	n pt 15	4	O	4
248	Galbreath, Sarah	5 and 6, pt n hf 13	1	O	4
308	Hodgson, Jennet	n hf 9	2	O	4
236	Marriott, Annie	B 2, pt n hf 12 (and o. p.)	1	O	4
257	McFarlane, Christina	n e cor r. hf 14	1	O	4
393	McGill, Jane	s hf 12	3	O	4
245	Powell, Elizabeth	A 7 and 8, pt n hf 13	1	O	4

PART 3.--Persons entitled to vote at Elections to the Legislative Assembly only.

Jurors No. on Roll.	NAME.	LOT.	Con.		P. O.
448	Boyd, William A.	e hf s hf 10	4	Oc	4
324	Butler, John	e hf n hf 14	2	Oc	4
251	Hyndman, Alexander	n e cor pt n hf 13	1	WE	4
325	Lashbrook, John	e hf n hf 14	2	Oc	4
237	Long, Richard W.	pt n hf 12, railroad land	1	Oc	4
223	McKinnon, Donald	F 1, 2, 3, 5 and 6, pt r hf 12	1	Oc	4
219	Pomroy, Daniel	D 1, pt n hf 12	1	Cc	4
216	Rickmond, John	e hf n hf 11	1	Oc	4
391	Thomas, John	n hf 10	3	WE	4
253	Thomson, Alexander	A 6, pt n hf 13	1	Oc	4

Comprisin
except
with

P
PART
tic

Jurors No. on Roll.
478
335
202
536
535
527
534
525
401
407
282
332
331
286
405
406
404
403
410
343
341
423
342
409
474
411
531

POLLING SUB-DIVISION No. 7.

Comprising Lots 16 to 24 inclusive, in 1st, 2nd, 3rd, 4th and 5th Concessions, except the portions of Lots 23 and 24, in the 1st and 2nd Concessions, within the incorporated Village of Glencoe.

Polling Station fixed at School House on n hf Lot No. 21, Con. 3.

PART 1.--Persons entitled to vote at both Municipal Elections and Elections to the Legislative Assembly.

JURORS	No. on Roll.	NAME.	LOT.	Con.		P. O.
j	478	Beaton, Archibald	n pt w hf 21	4	O	6
j	335	Black, Dugald	w hf s hf 16	2	O	4
j	202	Butler, William	n hf 16	1	T	4
j	536	Campbell, Charles	e hf n hf 20 (house)	5	T	6
j	535	Campbell, Duncan	n hf 19 (and o. p.)	5	O	6
j	527	Campbell, John	pt n hf 16	5	O	6
j	534	Campbell, Peter	n hf 19 (and o. p.)	5	O	6
j	525	Carruthers, Christopher	e pt 16 (and o. p.)	5	O	4
j	401	Chisholm, Angus	s hf s hf 16	3	O	4
j	407	Corneil, Daniel	n $\frac{1}{2}$ s hf 17	3	O	4
j	282	Currie, Nathaniel	e pt n hf 23	1	O	6
j	332	Davidson, A. D.	s hf n hf s hf 17	3	O	28
j	331	Davidson, William	s hf n hf s hf 17	3	O	28
j	286	Dean, Michael	e hf s hf 24	1	O	6
j	406	Devlin, John	n hf 17 (and o. p.)	3	O	4
j	406	Devlin, Lewis	s hf s hf 17	3	O	4
j	404	Devlin, Thomas E.	n hf n hf 16	3	O	10 $\frac{1}{2}$
j	403	Devlin, William J.	s hf n hf 16	3	C	4
j	410	Eddie, David	n hf 19 (and o. p.)	3	O	6
j	343	Eddie, David	s hf 18	2	LS	6
j	341	Eddie, James	s hf 18 (and o. p.)	2	O	6
j	423	Eddie, James A.	s hf 24	3	O	6
j	342	Eddie, John	s hf 18	2	LS	6
j	409	Eddie, John W.	s hf 19 (and o. p.)	3	O	6
j	474	Eddie, Robert	s hf 20	4	O	6
j	411	Eddie, William	n hf 19 (and o. p.)	3	O	6
	531	Gow, William	18	5	O	36

26 VOTERS' LIST, 1888—TOWNSHIP OF EKFRID—(P.S.D. No. 7.)

Jurors	No. on Roll	NAME.	LOT.	Con.		P. O.
j	358	Graham, Archibald	n hf 24	2	O	6
	418	Graham, Daniel	s hf 22	3	LS	6
j	416	Graham, Duncan	n hf 21	3	O	6
	482	Graham, George A.	s hf 23	4	O	19
	263	Harris, James	n hf 16 (and o. p.)	1	O	6
	360	Harrison, George M.	w hf n hf 23	2	O	6
j	414	Harvey, T. J.	w hf n hf 20	3	O	6
	526	Henry, John	pt n hf 16	5	T	21
	463	Hicks, Green	s hf e hf 16	4	O	36
	529	Hull, David H.	pt s hf 17	5	O	4
j	528	Hull, John E.	pt s hf 17 (and o. p.)	5	O	4
	544	Leitch, Donald	n hf 22	5	O	36
j	541	Leitch, Duncan	n hf 21	5	O	6
j	538	Leitch, Lachlan	w hf n hf 20	5	O	6
	333	Martin, Alexander	n hf 16	2	O	4
	334	Martin, William S.	n hf 16	2	LS	4
j	408	Mawhinney, John	n hf 18	3	O	6
j	468	Mawhinney, John	s hf 18	4	O	6
	469	Mawhinney, Joseph	s hf 18	4	LS	6
j	473	Mawhinney, Levi N.	s hf 19	4	O	6
j	530	Munroe, Peter	n hf 17	5	O	36
j	467	Munson, R. S.	n hf 17	4	O	4
	546	McAlpin, Alexander	e hf n hf 23	5	O	23
j	349	McAlpin, John	n hf 20	2	O	6
	267	McArthur, Duncan	s hf 16	1	O	4
j	264	McArthur, Duncan	e l f s hf 17	1	O	4
j	425	McCallum, Duncan	n hf 24 (and o. p.)	3	O	6
j	419	McCallum, John A.	s hf 22 (and o. p.)	4	T	6
j	420	McCallum, John	s hf 22 (and o. p.)	4	O	6
	424	McCallum, John	n hf 24 (and o. p.)	3	O	6
j	537	McCallum, Zachariah	s hf 20 (and o. p.)	5	O	6
	356	McCracken, David	n hf s hf 24 (and o. p.)	2	LS	6
	355	McCracken, John	n hf s hf 24 (and o. p.)	2	O	6
j	354	McCracken, Nathan	n hf 22	2	T	6
	357	McCracken, W. R. S.	n hf s hf 24 (and o. p.)	2	LS	6
	464	McEacharn, John	w hf 16	4	O	4
	466	McFarlane, Donald	s hf 17	4	O	4
	471	McFarlane, Donald H.	n hvs 18 and 19	4	LS	6
	470	McFarlane, Hector	n hvs 18 and 19	4	O	6
j	465	McFarlane, John J.	s hf 17	4	O	4
	483	McGrigor, Donald	e hf n hf 23	4	O	6
	548	McGrigor, Duncan	24	5	O	6
	549	McGrigor, Peter	24	5	LS	6
j	336	McIntyre, Duncan B.	w hf s hf 16 (and o. p.)	2	T	4
	484	McIntyre, James	w hf n hf 23	4	O	6

Jurors	No. on Roll.
j	337
	352
	415
	485
	351
	412
	547
	480
	422
	476
	350
	272
	281
j	278
	280
	339
	279
	273
	283
	284
	345
	346
	340
	542
	543
	545
	102
	266
	37
	330
	533
	552
j	481
	361
j	275
	277
	276
	462
j	413
	477
	421
	268
	359
j	475
	539

	P. O.	Jurors	No. on Roll.	NAME.	LOT.	Con.		P.O.
	6		337	McIntyre, Malcolm	w hf s hf 16	2	T	4
S	6		352	McKay, Robert	e pt s hf 22 (and o. p.)	2	Oc	6
	6		415	McKellar, Alexander D.	s hf 21	3	O	6
19			485	McKellar, Archibald	s pt n hf 24	4	O	23
			351	McKellar, John A.	n hf 21	2	O	6
			412	McKellar, John	s hf 20	3	O	6
6			547	McLachlan, Alexander	w hf n hf 23	5	O	6
6			480	McLachlan, Archibald	n hf 22	4	O	6
6			422	McLachlan, John	n hf 23	3	O	6
21			476	McLarty, John	s pt 21	4	O	6
36			350	McLean, Allan	s hf 21 (and o. p.)	2	O	6
4			272	McMillan, Donald	s hf s hf 20	1	LS	6
4			281	McRae, Donald, sr.	s hf 23	1	O	6
			278	McRae, Donald	n hf 21 (and o. p.)	1	O	6
			280	McRae, Donald B.	w pt n hf 22	1	O	6
36			339	McRae, Duncan A.	s hf 17 (and c. p.)	2	O	4
6			279	McRae, John	n hf 21 (and o. p.)	1	O	6
6			273	McRae, Philip	n hf 20 (and o. p.)	1	O	6
			283	McRoberts, Chambers	pt n hf 33 (and c. p.)	1	O	6
			284	McRoberts, John	pt n hf 23 (and o. p.)	1	O	6
			345	McTaggart, Hugh	n hf 18	2	O	4
S	4		346	McTaggart, John	n hf 18	2	LS	4
	6		340	McTaggart, Peter	n hf 17	2	O	4
	6		542	McVicar, Archibald	s hf 22	5	O	6
S	6		543	McVicar, David	s hf 22	5	O	6
	6		545	McVicar, Donald	s hf 23	5	O	6
36								
4			102	Pace, George	n hf s hf 16	3	O	4
			266	Pole, Francis J.	n hf 17	1	O	4
23			37	Pole, James	n hf 18 (and o. p.)	1	O	4
6			330	Pole, Tom	e hf s hf 16 (and o. p.)	2	O	4
4			533	Porter, John O.	s hf 19	5	O	6
4			552	Porter, William	s hf 19	5	O	6
6			481	Precious, George	s hf 23	4	T	6
6								
6			361	Rathburn, Isaac	w hf n hf 23	2	O	6
6			275	Riddle, James	s hf 22 (and o. p.)	1	O	6
S	6		277	Riddle, James C.	s hf 22 (and o. p.)	1	LS	6
	6		276	Riddle, William	s hf 22 (and o. p.)	1	LS	6
6								
S	6		462	Simmons, Henry	s hf e hf 16	4	T	4
	4		413	Stout, Donald	e hf n hf 20	3	O	6
4			477	Stuart, Alexander	n hf e hf 21 (and o. p.)	4	O	6
S	6		421	Sutherland, Alexander	n hf 23	3	T	6
	6		268	Sutherland, William	pt s pt 19 (and o. p.)	1	O	6
4								
6			359	Toon, Matthew	e hf n hf 23 (and o. p.)	2	O	6
6								
S	6		475	Wier, William B.	n hf 20	4	O	6
4								
6			539	Yates, Thomas	s hf 21	5	O	6

PART 2.--Persons entitled to vote at Municipal Elections only.

Jurors	No. on Roll.	NAME.	LOT.	Con.		P. O.
	417	Graham, Ann	s hf 22	3	O	6
	265	McArthur, Catharine	w hf s hf 17	1	O	4
	347	McGuzan, Euphemia	s hf 20	2	O	6
	486	McIntyre, Jane	n pt n hf 24	4	O	6
	353	McKay, Jane	e pt s hf 22	2	O	6
	479	McLachlin, Flora.	n hf 22	4	O	6
	271	McMillan, Mary	s hf s hf 20	1	O	6
	270	Quick, Mary	n pt 19	1	O	6

PART 3.--Persons entitled to vote at Elections to the Legislative Assembly only.

Jurors	No. on Roll.	NAME.	LOT.	Con.		P. O.
	274	Earhart, William	pt n hf 20, R. R. land	1	Oc	6
	472	Gates, Joseph	n hvs 18 and 19	4	WE	6
	348	McAlpin, Angus	s hf 20	2	WE	6
	297	Talany, Lewis	n hf 18	1	WE	4

Total number of qualified Jurors appearing on this List, in Township of Ekfrid, in respect of age and property..... 436

Total number of Legislative Voters appearing on this List, in Township of Ekfrid, in respect of age and property..... 784

Total number of Municipal Voters appearing on this List, in Township of Ekfrid, in respect of age and property..... 796

I, H
of Middle
constitut
Revised
tions for
constitut
to be ent
call upon
are perce
rected ac
Date

(E

I, HECTOR MCFARLANE, Clerk of the Municipality of Ekfrid, in the County of Middlesex, do hereby certify that Parts One and Three of the foregoing List constitute a correct List for the year 1888, of all persons appearing by the last Revised Assessment Roll of the said Municipality to be entitled to vote at Elections for members to the Legislative Assembly, and that Parts One and Two constitute a correct List for the said year of all persons appearing by said Roll to be entitled to vote at Municipal Elections in said Municipality, and I hereby call upon all Electors to examine said List, and if any omissions or other errors are perceived therein to take immediate proceedings to have the said errors corrected according to law.

Dated this 30th day of July, A.D., 1888.

HECTOR MCFARLANE,

Clerk of the said Municipality.

(P.O. address, Glencoe.)

Residence, N hf Lot 18, Con. 4, Ekfrid.

ctions

	P. O.
	6
	4
	6
	6
	6
	6
	6

the

	P. O.
Oc	6
WE	6
WE	6
WE	4

of
... 436

o of
... 784

o of
... 796

