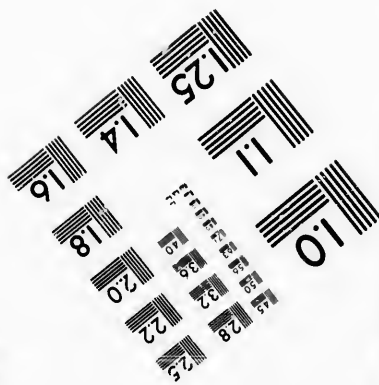
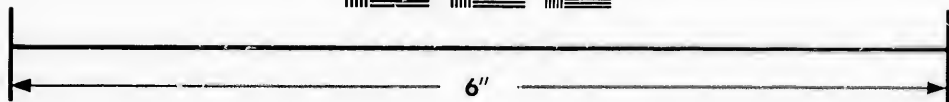
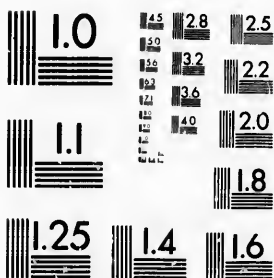


**IMAGE EVALUATION
TEST TARGET (MT-3)**



**Photographic
Sciences
Corporation**

23 WEST MAIN STREET
WEBSTER, N.Y. 14580
(716) 872-4503



**CIHM/ICMH
Microfiche
Series.**

**CIHM/ICMH
Collection de
microfiches.**



Canadian Institute for Historical Microreproductions / Institut canadien de microreproductions historiques



© 1987

Technical and Bibliographic Notes/Notes techniques et bibliographiques

The Institute has attempted to obtain the best original copy available for filming. Features of this copy which may be bibliographically unique, which may alter any of the images in the reproduction, or which may significantly change the usual method of filming, are checked below.

L'Institut a microfilmé le meilleur exemplaire qu'il lui a été possible de se procurer. Les détails de cet exemplaire qui sont peut-être uniques du point de vue bibliographique, qui peuvent modifier une image reproduite, ou qui peuvent exiger une modification dans la méthode normale de filmage sont indiqués ci-dessous.

Coloured covers/
Couverture de couleur

Coloured pages/
Pages de couleur

Covers damaged/
Couverture endommagée

Pages damaged/
Pages endommagées

Covers restored and/or laminated/
Couverture restaurée et/ou pelliculée

Pages restored and/or laminated/
Pages restaurées et/ou pelliculées

Cover title missing/
Le titre de couverture manque

Pages discoloured, stained or foxed/
Pages décolorées, tachetées ou piquées

Coloured maps/
Cartes géographiques en couleur

Pages detached/
Pages détachées

Coloured ink (i.e. other than blue or black)/
Encre de couleur (i.e. autre que bleue ou noire)

Showthrough/
Transparence

Coloured plates and/or illustrations/
Planches et/ou illustrations en couleur

Quality of print varies/
Qualité inégale de l'impression

Bound with other material/
Relié avec d'autres documents

Includes supplementary material/
Comprend du matériel supplémentaire

Tight binding may cause shadows or distortion along interior margin/
La reliure serrée peut causer de l'ombre ou de la distorsion le long de la marge intérieure

Only edition available/
Seule édition disponible

Blank leaves added during restoration may appear within the text. Whenever possible, these have been omitted from filming/
Il se peut que certaines pages blanches ajoutées lors d'une restauration apparaissent dans le texte, mais, lorsque cela était possible, ces pages n'ont pas été filmées.

Pages wholly or partially obscured by errata slips, tissues, etc., have been refilmed to ensure the best possible image/
Les pages totalement ou partiellement obscurcies par un feuillet d'errata, une pelure, etc., ont été filmées à nouveau de façon à obtenir la meilleure image possible.

Additional comments:
Commentaires supplémentaires:

This item is filmed at the reduction ratio checked below/
Ce document est filmé au taux de réduction indiqué ci-dessous.

10X	14X	18X	22X	26X	30X
<input type="checkbox"/>	<input checked="" type="checkbox"/>	<input type="checkbox"/>	<input type="checkbox"/>	<input type="checkbox"/>	<input type="checkbox"/>
12X	16X	20X	24X	28X	32X

The copy filmed here has been reproduced thanks to the generosity of:

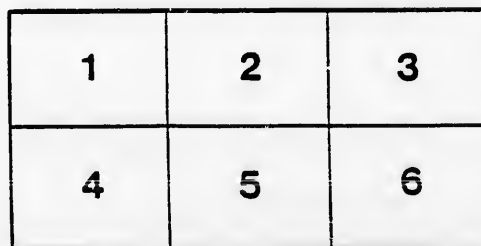
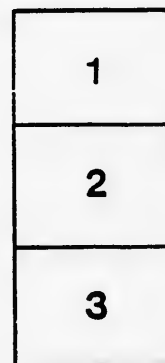
Archives of Ontario
Toronto

The images appearing here are the best quality possible considering the condition and legibility of the original copy and in keeping with the filming contract specifications.

Original copies in printed paper covers are filmed beginning with the front cover and ending on the last page with a printed or illustrated impression, or the back cover when appropriate. All other original copies are filmed beginning on the first page with a printed or illustrated impression, and ending on the last page with a printed or illustrated impression.

The last recorded frame on each microfiche shall contain the symbol \rightarrow (meaning "CONTINUED"), or the symbol ∇ (meaning "END"), whichever applies.

Maps, plates, charts, etc., may be filmed at different reduction ratios. Those too large to be entirely included in one exposure are filmed beginning in the upper left hand corner, left to right and top to bottom, as many frames as required. The following diagrams illustrate the method:



L'exemplaire filmé fut reproduit grâce à la générosité de:

Archives of Ontario
Toronto

Les images suivantes ont été reproduites avec le plus grand soin, compte tenu de la condition et de la netteté de l'exemplaire filmé, et en conformité avec les conditions du contrat de filmage.

Les exemplaires originaux dont la couverture en papier est imprimée sont filmés en commençant par le premier plat et en terminant soit par la dernière page qui comporte une empreinte d'impression ou d'illustration, soit par le second plat, selon le cas. Tous les autres exemplaires originaux sont filmés en commençant par la première page qui comporte une empreinte d'impression ou d'illustration et en terminant par la dernière page qui comporte une telle empreinte.

Un des symboles suivants apparaîtra sur la dernière image de chaque microfiche, selon le cas: le symbole \rightarrow signifie "A SUIVRE", le symbole ∇ signifie "FIN".

Les cartes, planches, tableaux, etc., peuvent être filmés à des taux de réduction différents. Lorsque le document est trop grand pour être reproduit en un seul cliché, il est filmé à partir de l'angle supérieur gauche, de gauche à droite, et de haut en bas, en prenant le nombre d'images nécessaire. Les diagrammes suivants illustrent la méthode.

ails
du
difier
une
page

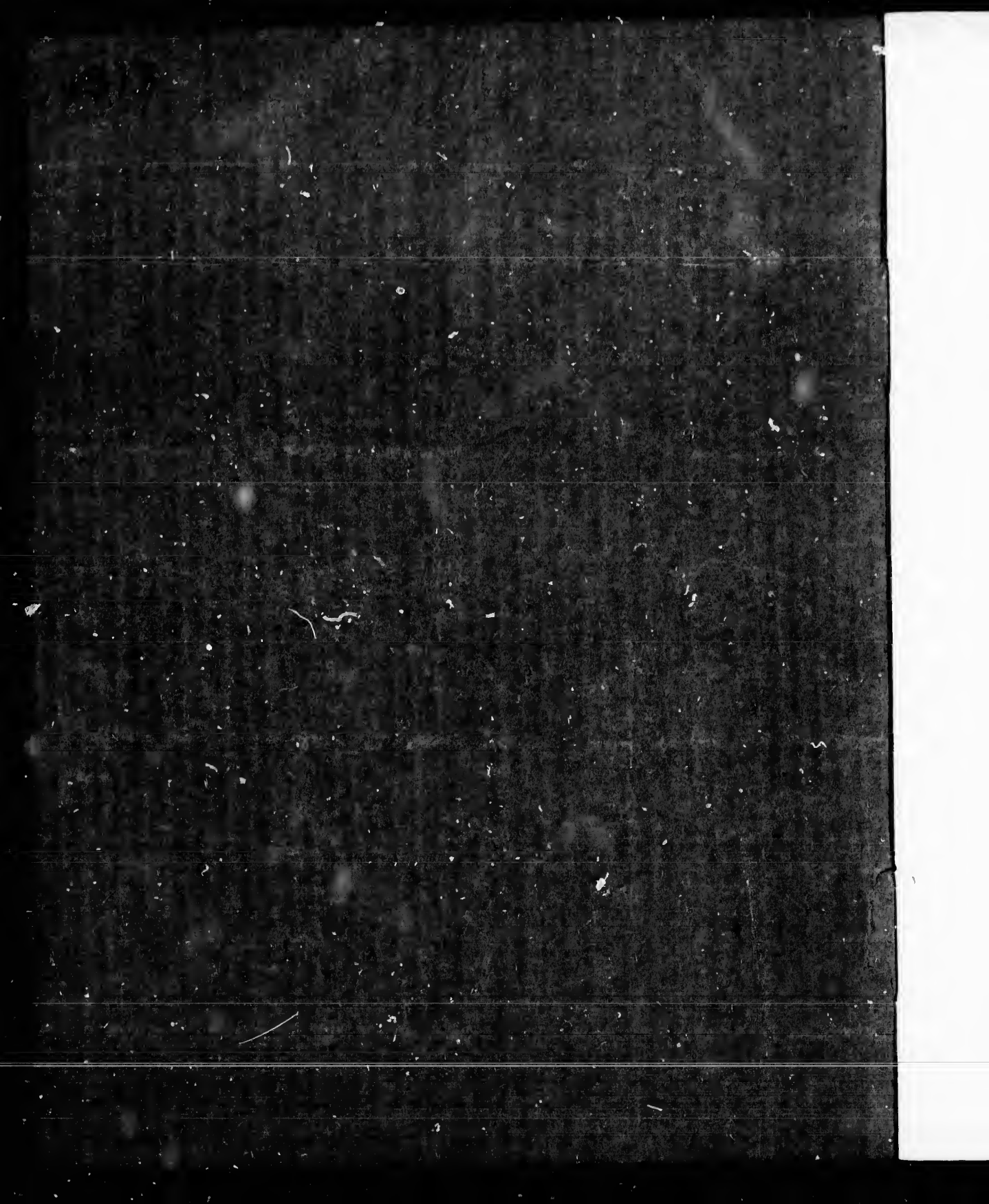
rata
O
elure,
à

32X

1889

36

**LIBERAL
CONSERVATIVE
UNION**



CONSTITUTION AND RULES

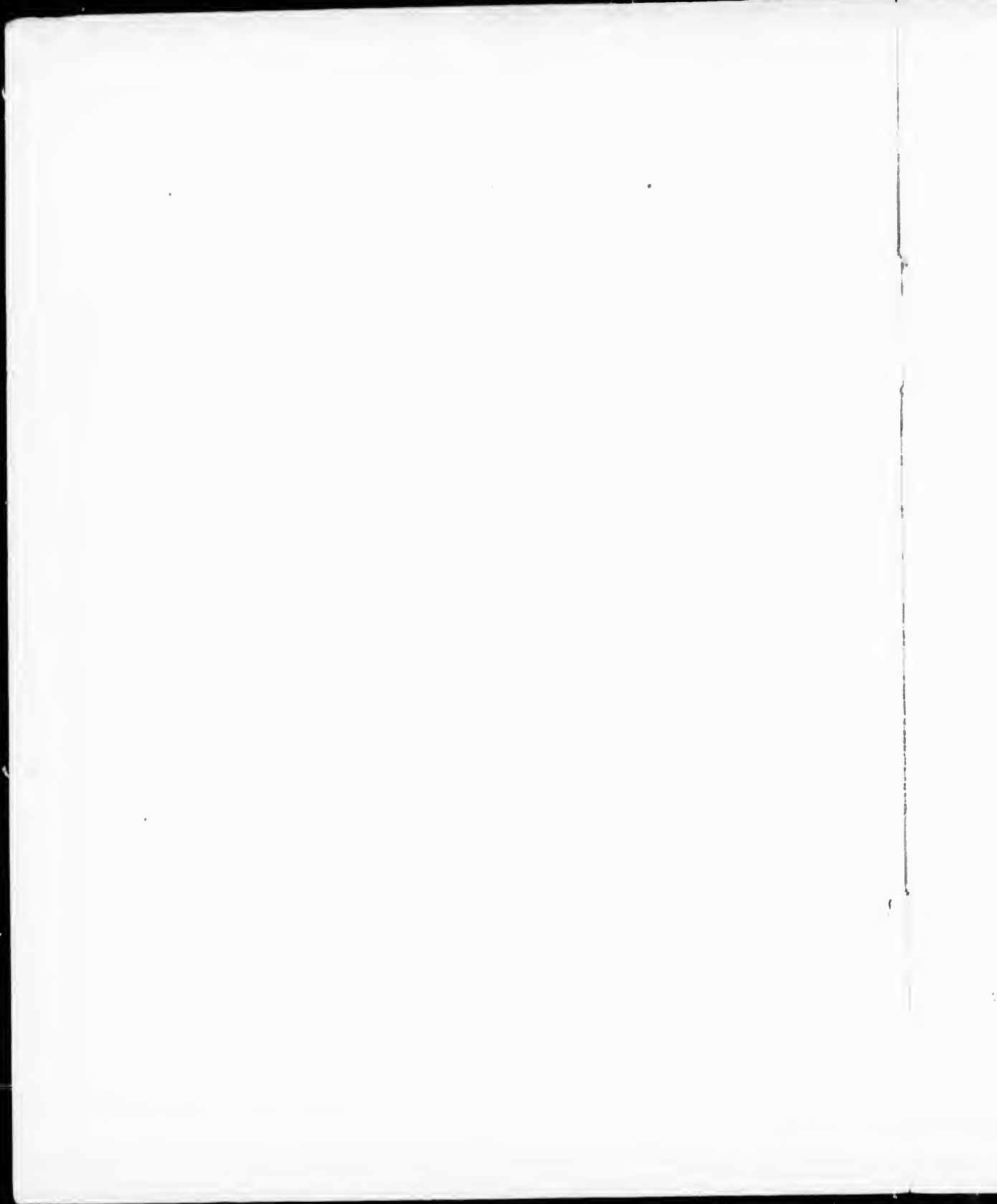
OF THE

Liberal Conservative Union

OF ONTARIO.

*Adopted at a meeting of the Union holden at Ottawa, on
the 28th day of February, 1889.*

For Private Circulation only.



CONSTITUTION AND RULES
OF THE
Liberal Conservative Union
OF ONTARIO.

NAME AND OBJECT.

This Association shall be known as the LIBERAL
CONSERVATIVE UNION OF ONTARIO.

The membership shall be as follows :

(a) Senators and Members of the House of Commons from Ontario, and Members of the Legislative Assembly who belong to the Liberal Conservative party.

(b) The unsuccessful Liberal Conservative Candidates for Ontario at the last General Election for the House of Commons and Legislative Assembly respectively.

(c) A Representative from each Electoral District for the House of Commons for Ontario and for the Legislative Assembly, who shall be elected or appointed at a regular meeting of Each Electoral District Association.

(d) And such representatives from Young Men's Liberal Conservative Clubs or Associations as may be agreed upon between the Executive and such Clubs or Associations.

QUORUM.

Twenty members shall constitute a quorum.

OBJECTS.

The objects of the Provincial Union are :—

1. To secure efficient and uniform organization in every Electoral District, and to provide means for an interchange of communication between the leaders and members of the party. A common centre at which arrangements can be made for speakers, organizers, etc., during a campaign.

2. The preparing and supplying of forms for placing names on the Dominion and Local House Voters' Lists.

3. The distribution of general and campaign literature.

4. To assist in promoting the election of Liberal Conservative Candidates to either House in General and Bye Elections.

It is, however, distinctly understood that the Union shall not exercise any authority, assume any control, or interfere with local organizations in the selection of candidates, or in any matter of purely local concern.

Nor will the Union attempt to control, dictate, or interfere with the policy pursued in either House of Parliament or in the Legislative Assembly.

TIME AND PLACE OF MEETING.

The General Meeting shall be held in the City of Toronto on such day in the month of January or February as the Executive hereafter provided for may appoint.

HEADQUARTERS.

The headquarters of the Union shall be in the City of Toronto, but the Executive may, from time to time, establish, in affiliation with the Union, such

~~Associations~~
Associations to be called District Unions, for the special management of party matters within certain defined districts of the Province.

OFFICERS.

The Officers of the Union shall be a President, Vice-President, and Secretary-Treasurer (who shall be a salaried official).

These officers shall be appointed at the regular meeting in each year, but in the event of there being no meeting of the Union during the year, they shall continue in office until a general meeting is held.

EXECUTIVE COMMITTEE.

The Executive Committee of the Union shall be composed of the officers, together with an Advisory Committee of thirty to be selected from among the members at the regular annual meeting.

This Committee shall elect a Chairman from among themselves. In the event of a vacancy occurring in the said Committee they may, from time to time, appoint any member of the Union to fill such vacancy.

The Executive shall manage the affairs of the Union, and from time to time report.

Five members of the Executive shall constitute a quorum.

FINANCIAL.

To assist in carrying on the work of the Union the following annual contributions shall be made.

1. From each Polling Sub-Division Association the sum of at least one dollar.
2. From ordinary members, ten dollars.
3. From members who belong to the Legislative Assembly, fifteen dollars.
4. From members who belong to the House of Commons, twenty-five dollars.
5. From members who are of the Senate, fifty dollars.
6. From Cabinet Ministers, one hundred dollars.

Subscriptions are due and payable before the first of April in each year.

Remittances should be made direct to the Secre-

tary-Treasurer who will, in acknowledgment, forward a receipt.

The funds of the Union shall be lodged in some chartered bank to the credit of the Union, and no sum shall be withdrawn therefrom, nor should any payment be made thereout, unless authorized by resolution of the Executive Committee, and upon order of the Chairman and the Secretary-Treasurer.

No advance or payment shall be made out of the funds of the Union on any pretext, for any purpose declared illegal or corrupt by any law in force respecting the election of members to the House of Commons or Legislative Assembly.

