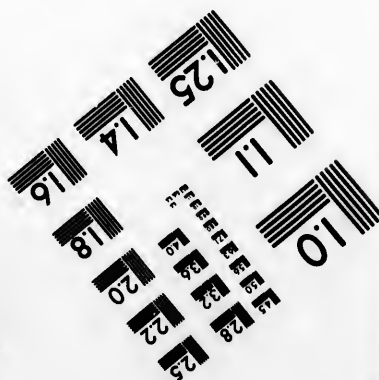
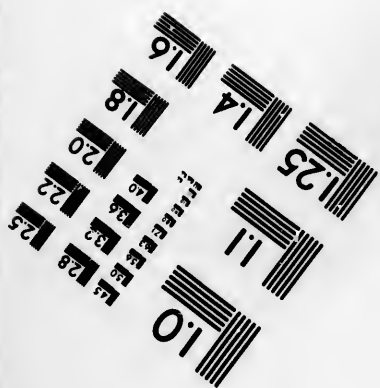
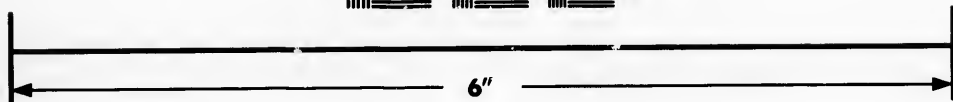
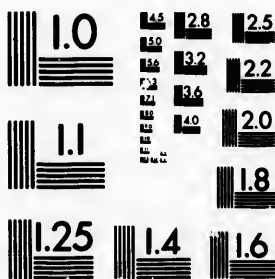


**IMAGE EVALUATION
TEST TARGET (MT-3)**



**Photographic
Sciences
Corporation**

23 WEST MAIN STREET
WEBSTER, N.Y. 14580
(716) 872-4503

**CIHM/ICMH
Microfiche
Series.**

**CIHM/ICMH
Collection de
microfiches.**



Canadian Institute for Historical Microreproductions / Institut canadien de microreproductions historiques

© 1983

The copy filmed here has been reproduced thanks to the generosity of:

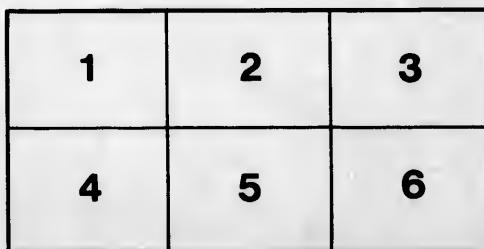
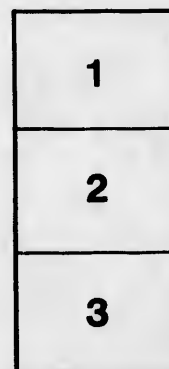
Metropolitan Toronto Library
Canadian History Department

The images appearing here are the best quality possible considering the condition and legibility of the original copy and in keeping with the filming contract specifications.

Original copies in printed paper covers are filmed beginning with the front cover and ending on the last page with a printed or illustrated impression, or the back cover when appropriate. All other original copies are filmed beginning on the first page with a printed or illustrated impression, and ending on the last page with a printed or illustrated impression.

The last recorded frame on each microfiche shall contain the symbol \rightarrow (meaning "CONTINUED"), or the symbol ∇ (meaning "END"), whichever applies.

Maps, plates, charts, etc., may be filmed at different reduction ratios. Those too large to be entirely included in one exposure are filmed beginning in the upper left hand corner, left to right and top to bottom, as many frames as required. The following diagrams illustrate the method:



L'exemplaire filmé fut reproduit grâce à la générosité de:

Metropolitan Toronto Library
Canadian History Department

Les images suivantes ont été reproduites avec le plus grand soin, compte tenu de la condition et de la netteté de l'exemplaire filmé, et en conformité avec les conditions du contrat de filmage.

Les exemplaires originaux dont la couverture en papier est imprimée sont filmés en commençant par la première page et en terminant soit par la dernière page qui comporte une empreinte d'impression ou d'illustration, soit par la dernière page qui comporte une telle empreinte.

Un des symboles suivants apparaît sur la dernière image de chaque microfiche, selon le cas: le symbole \rightarrow signifie "A SUIVRE", le symbole ∇ signifie "FIN".

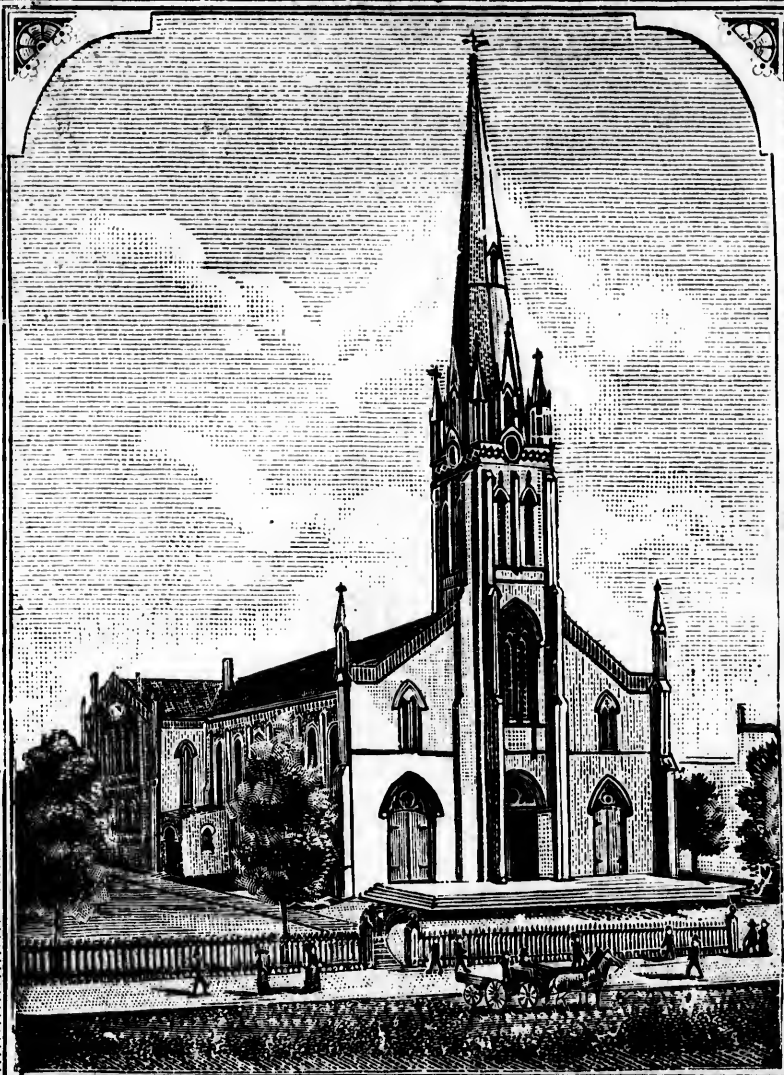
Les cartes, planches, tableaux, etc., peuvent être filmés à des taux de réduction différents. Lorsque le document est trop grand pour être reproduit en un seul cliché, il est filmé à partir de l'angle supérieur gauche, de gauche à droite, et de haut en bas, en prenant le nombre d'images nécessaire. Les diagrammes suivants illustrent la méthode.

1820

1844

1895

◆ KNOX CHURCH JUBILEE ◆



◆ Rev. H. M. Parsons, D.D., Pastor ◆

The Session of Knox Church



Greeting;

To

You are cordially invited to
be present, and to participate in the

MEMORIAL SERVICES

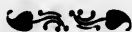
connected with the observance of the
Jubilee of Knox Congregation.

H. M. PARSONS, MODERATOR.

JAMES KNOWLES, JR. }

JOHN DUNCAN, }

JOINT CLERKS.



Historical . . Memoranda

First permanent Presbyterian Services, Sept., 1820.
Committee chosen for organization, Nov., 1820.
Present site of the Church deeded by Jesse Ketchum,
December 25th, 1820.
Union of Presbyterian Church of York with Knox Ch.
December 30th, 1844.

Present Pastor inducted April 16th, 1880.

Commemorative Services

APRIL 7, 11 A.M.—Rev. D. H. Fletcher, D.D.

7 P.M.—Rev. Wm. S. Ball.

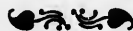
“ 14, 11 A.M.—Children’s Sermon, by the Pastor.

Presentation of Bibles to children baptized seven years ago.

3 P.M.—Anniversary of Sab. Schools :

Addresses by former Superintendents and by Rev. Mr. Gilray,
first missionary in Duchess St.

7 P.M.—Rev. Prof. Wm. McLaren, D.D.,



Social Re-Union, Thursday, April 11

Refreshments from 6.30 to 8 p.m.

Addresses by REV. WM. REID, D.D.

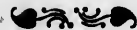


REV. PROF. WM. GREGG, D.D.

REV. ROBERT WALLACE

REV. JAMES ROBERTSON, D.D.

REV. WILLIAM BURNS, AND OTHERS.



WM. GALBRAITH, Chairman, Jubilee Committee.

S. H. LAUGHLIN, Secretary, 94 Bond St.

FIRST PRESBYTERIAN EDIFICE, BUILT OF BRICK, 1821.
FACING RICHMOND STREET.



ENLARGED BY ADDITION OF FRAME STRUCTURE ACROSS SOUTH END, 1844.

BURNED IN 1847.

1895. Knox.

ARBUTHNOT BROS. & CO., PRINTERS.

