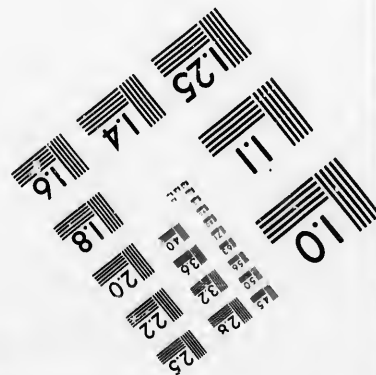
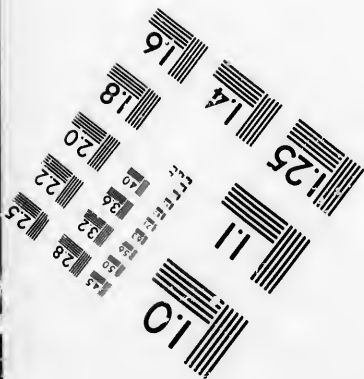
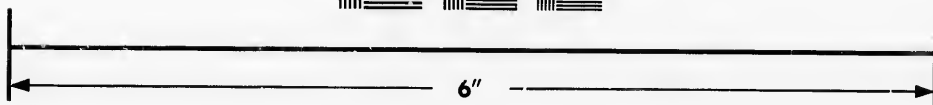
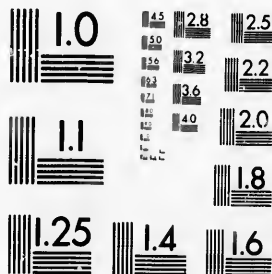


**IMAGE EVALUATION
TEST TARGET (MT-3)**



**Photographic
Sciences
Corporation**

23 WEST MAIN STREET
WEBSTER, N.Y. 14580
(716) 872-4503

**CIHM/ICMH
Microfiche
Series.**

**CIHM/ICMH
Collection de
microfiches.**



Canadian Institute for Historical Microreproductions / Institut canadien de microreproductions historiques

© 1986

Technical and Bibliographic Notes/Notes techniques et bibliographiques

The Institute has attempted to obtain the best original copy available for filming. Features of this copy which may be bibliographically unique, which may alter any of the images in the reproduction, or which may significantly change the usual method of filming, are checked below.

L'Institut a microfilmé le meilleur exemplaire qu'il lui a été possible de se procurer. Les détails de cet exemplaire qui sont peut-être uniques du point de vue bibliographique, qui peuvent modifier une image reproduite, ou qui peuvent exiger une modification dans la méthode normale de filmage sont indiqués ci-dessous.

- Coloured covers/
Couverture de couleur
- Covers damaged/
Couvertures endommagées
- Covers restored and/or laminated/
Couverture restaurée et/ou pelliculée
- Cover title missing/
Le titre de couverture manque
- Coloured maps/
Cartes géographiques en couleur
- Coloured ink (i.e. other than blue or black)/
Encre de couleur (i.e. autre que bleue ou noire)
- Coloured plates and/or illustrations/
Planches et/ou illustrations en couleur
- Bound with other material/
Relié avec d'autres documents
- Tight binding may cause shadows or distortion along interior margin/
La reliure serrée peut causer de l'ombre ou de la distorsion le long de la marge intérieure
- Blank leaves added during restoration may appear within the text. Whenever possible, these have been omitted from filming/
Il se peut que certaines pages blanches ajoutées lors d'une restauration apparaissent dans le texte, mais, lorsque cela était possible, ces pages n'ont pas été filmées.
- Additional comments:/
Commentaires supplémentaires:

- Coloured pages/
Pages de couleur
- Pages damaged/
Pages endommagées
- Pages restored and/or laminated/
Pages restaurées et/ou pelliculées
- Pages discoloured, stained or foxed/
Pages décolorées, tachetées ou piquées
- Pages detached/
Pages détachées
- Showthrough/
Transparence
- Quality of print varies/
Qualité inégale de l'impression
- Includes supplementary material/
Comprend du matériel supplémentaire
- Only edition available/
Seule édition disponible
- Pages wholly or partially obscured by errata slips, tissues, etc., have been refilmed to ensure the best possible image/
Les pages totalement ou partiellement obscurcies par un feuillet d'errata, une pelure, etc., ont été filmées à nouveau de façon à obtenir la meilleure image possible.

DISTORTION OF PRINT MAY RESULT FROM CREASED PAGES.

This item is filmed at the reduction ratio checked below/
Ce document est filmé au taux de réduction indiqué ci-dessous.

| | | | | | |
|--------------------------|--------------------------|--------------------------|--------------------------|-------------------------------------|--------------------------|
| 10X | 14X | 18X | 22X | 26X | 30X |
| <input type="checkbox"/> | <input type="checkbox"/> | <input type="checkbox"/> | <input type="checkbox"/> | <input checked="" type="checkbox"/> | <input type="checkbox"/> |
| 12X | 16X | 20X | 24X | 28X | 32X |

The copy filmed here has been reproduced thanks to the generosity of:

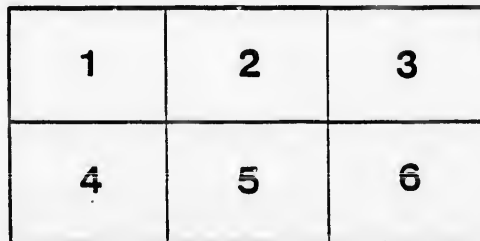
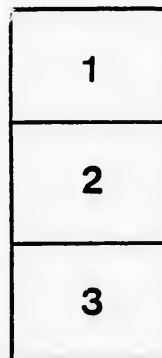
Archives of Ontario
Toronto

The images appearing here are the best quality possible considering the condition and legibility of the original copy and in keeping with the filming contract specifications.

Original copies in printed paper covers are filmed beginning with the front cover and ending on the last page with a printed or illustrated impression, or the back cover when appropriate. All other original copies are filmed beginning on the first page with a printed or illustrated impression, and ending on the last page with a printed or illustrated impression.

The last recorded frame on each microfiche shall contain the symbol \rightarrow (meaning "CONTINUED"), or the symbol ∇ (meaning "END"), whichever applies.

Maps, plates, charts, etc., may be filmed at different reduction ratios. Those too large to be entirely included in one exposure are filmed beginning in the upper left hand corner, left to right and top to bottom, as many frames as required. The following diagrams illustrate the method:



L'exemplaire filmé fut reproduit grâce à la générosité de:

Archives of Ontario
Toronto

Les images suivantes ont été reproduites avec le plus grand soin, compte tenu de la condition et de la netteté de l'exemplaire filmé, et en conformité avec les conditions du contrat de filmage.

Les exemplaires originaux dont la couverture en papier est imprimée sont filmés en commençant par le premier plat et en terminant soit par la dernière page qui comporte une empreinte d'impression ou d'illustration, soit par le second plat, selon le cas. Tous les autres exemplaires originaux sont filmés en commençant par la première page qui comporte une empreinte d'impression ou d'illustration et en terminant par la dernière page qui comporte une telle empreinte.

Un des symboles suivants apparaîtra sur la dernière image de chaque microfiche, selon le cas: le symbole \rightarrow signifie "A SUIVRE", le symbole ∇ signifie "FIN".

Les cartes, planches, tableaux, etc., peuvent être filmés à des taux de réduction différents. Lorsque le document est trop grand pour être reproduit en un seul cliché, il est filmé à partir de l'angle supérieur gauche, de gauche à droite, et de haut en bas, en prenant le nombre d'images nécessaire. Les diagrammes suivants illustrent la méthode.

ails
du
odifier
une
image

rrata
o

pelure,
n à

32X

County of Brant }
Township of Burford }
do Wit }

I Henry Foster, Clerk
of the Municipality of
the Township of Burford
in the County of Brant.

make oath and say, that the annexed
is a correct copy of the List of voters
for the Township of Burford in the said
County, for the year 1874, as revised
and corrected by the County Judge.

Sworn before me at ~~Kottank~~
in the said County this }
24th day of August 1874. }
Richard Malvern J.P.

Henry Foster

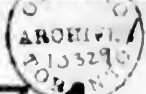
List of Voters for the To

POLLING SUBDIVISION NO. 1.

| | | |
|-----|-----|---|
| 1 | 386 | Armstrong, Thomas 4 e 1/2 n w 1/4 f |
| 2 | 11 | Berney, Darby 4 e pt 1 t h |
| 3 | 13 | Berford, John W 3 n 1/2 s 1/2 1 f h |
| 4 | 14 | Ballard, Henry A 5 e 1/2 4 f h |
| 5 | 15 | Ballard, John M 5 s w cor 12 f |
| 6 | 17 | Bailey, William 2 s pt w 1/2 6 t h |
| 7 | 18 | Bailey, James 2 s pt w 1/2 6 f h |
| 8 | 20 | Bradway, William 4 n e cor 4 f h |
| 9 | 21 | Brown, Alfred J 4 s e cor 5 f h |
| 10 | 22 | Bonney, William 3 s 1/2 7 f h |
| 11 | 23 | Brooks, Thomas 3 s e 1/2 10 f h |
| 12 | 24 | Beattie, Rowland 4 n e 1/2 11 t h |
| 13 | 26 | Brooks, Lot 4 n pt 11 t h |
| 14 | 27 | Brooks, William 3 s e 1/2 11 f h |
| 15 | 28 | Brooks, John 3 n 1/2 10 t h |
| 16 | 30 | Barker, Joseph 2 s e 1/2 6 f h |
| 17 | 81 | Beemer, C S 3 n w pt s e 1/2 12 f |
| 18 | 97 | Beamer, Jacob 1 e 1/2 9 t h |
| 19 | 38 | Beamer, David 1 e 1/2 9 f h |
| 20 | 39 | Beamer, Henry 1 pt w 1/2 9 f h |
| 21 | 48 | Barker, John 2 all 11 t h |
| 22 | 99 | Barker, Daniel 1 n 1/2 5 f |
| 23 | 226 | Broy, John 3 n 1/2 2 f |
| 24 | 506 | Baird, Andrew H 4 n pt 2 f |
| 25 | 703 | Bailey, William 3 s 1/2 7 f h |
| 26 | 25 | Clark, Dr. 4 n e 1/2 11 f |
| 27 | 65 | Church, Philip 2 e 1/2 n e 1/2 4 f h |
| 28 | 74 | Clinton, William 3 s e 1/2 3 t h |
| 29 | 76 | Corrigan, Andrew 4 n 1/2 5 f h |
| 30 | 77 | Chesney, David 3 n w 1/2 8 t h |
| 31 | 84 | Chisholm, Horace 3 o e pt e 1/2 4 f |
| 32 | 92 | Cassady, Edward 2 e 1/2 1 f h |
| 33 | 94 | Churehill, George 1 n pt 4 f h |
| 34 | 98 | Cain, Michael, 1 n 1/2 5 t h |
| 35 | 102 | Charles, Fred J 5 s pt 8 t h |
| 36 | 102 | Charles, John M 5 s pt 3 f |
| 37 | 103 | Crittenden, John, Jr 2 n w 1/2 4 t h |
| 38 | 104 | Crittenden, John, Sr 2 n w 1/2 4 f |
| 39 | 105 | Clark, George 2 n w pt 6 f h |
| 40 | 106 | Crozier, Adam 2 pt w 1/2 12 f h |
| 41 | 122 | Cope, Franklin C 5 n 1/2 12 f |
| 42 | 691 | Crozier, William 2 s w 1/2 3 f |
| 43 | 123 | Davidson, Thomas 5 n pt 3 t h |
| 44 | 129 | Dawson, Robert 4 s pt 1 f h |
| 45 | 130 | Dick, John 2 s 1/2 s w 1/2 1 t h |
| 46 | 132 | Darnley, Thomas 4 n w 1/2 2 t h |
| 47 | 133 | Darnley, John 4 n w 1/2 2 f |
| 48 | 139 | Day, Charles 3 s 1/2 2 f h |
| 49 | 140 | Disher, Edmund, 3 s 1/2 6 f h |
| 50 | 144 | Dickie, James 1 e pt 11 f h |
| 51 | 145 | Daniel, Lawrence 1 e pt 11 f h |
| 52 | 149 | Danby, William, Jr 3 s 1/2 s e 1/2 12 f h |
| 53 | 155 | Durham, Daniel 5 w 1/2 10 f h |
| 54 | 159 | Daniel, George 5 pt s e 1/2 6 f |
| 55 | 161 | Daniel, Lawrence, Esq., 5 s w 1/2 2 f h |
| 56 | 162 | Denby, William 3 s 1/2 s e 1/2 12 f h |
| 57 | 178 | Diokie, Hiram 4 pt s w 1/2 4 f |
| 58 | 165 | Eaton, Richard 2 pt n w 1/2 6 f h |
| 59 | 169 | Eaton, Charles 1 o pt 6 f h |
| 60 | 170 | Eakins, Solon 1 pt e 1/2 10 t h |
| 61 | 171 | Eakins, James 1 pt e 1/2 10 f h |
| 62 | 174 | Eaton, Elam 2 n e 1/2 6 f h |
| 63 | 57 | Fowler, Melzar 3 s w 1/2 6 f h |
| 64 | 175 | Forman, Jacob 5 n pt 9 f h |
| 65 | 176 | Fox, John 5 n 1/2 2 t h |
| 66 | 177 | Fox, Thomas 4 pt s w 1/2 4 t h |
| 67 | 180 | Farrell, William 3 s pt 9 t h |
| 68 | 190 | Freeman, Manuel 2 w 1/2 10 f |
| 69 | 196 | Force, Noah 4 w pt 10 f |
| 70 | 199 | Force, William T 4 pt n 1/2 12 f h |
| 71 | 201 | Fonger, William 5 s e 1/2 11 f h |
| 72 | 298 | Farrell, Richard 4 n 1/2 7 f |
| 73 | 300 | Force, James 3 n w cor 12 t |
| 74 | 209 | Griffiths, William 5 s pt 5 f h |
| 75 | 210 | Gannon, Jeremiah 4 w pt s 1/2 1 f h |
| 76 | 211 | Gibson, Alexander 5 e e pt 1 f h |
| 77 | 212 | Gilham, Henry 3 w 1/2 11 t h |
| 78 | 221 | Gow, Alexander 4 n w cor 12 t |
| 79 | 519 | Gill Joseph 2 e 1/2 8 f |
| 80 | 49 | Hersee, William 2 all 11 f |
| 81 | 123 | Heywood, Richard 5 n pt 3 f |
| 82 | 212 | Hersee, William 3 w 1/2 11 f |
| 83 | 223 | Henderson, Samuel 5 s 1/2 7 f h |
| 84 | 224 | Hill, Joseph 5 s w pt 9 t h |
| 85 | 225 | Halbert, George 3 n 1/2 2 t h |
| 86 | 230 | Henderson, John 4 n e pt 1 f h |
| 87 | 231 | Hankinson, Daniel 3 s 1/2 5 f h |
| 88 | 232 | Hunt, James 4 n e 1/2 6 f h |
| 89 | 234 | Hess, Alfred 3 s 1/2 7 t h |
| 90 | 235 | Hess, James 2 s 1/2 7 f h |
| 91 | 236 | Hess, Jacob 2 n 1/2 7 f h |
| 92 | 237 | Henderson, William, 2 s w 1/2 4 t h |
| 93 | 238 | Henderson, Cyrus 2 s w 1/2 4 t h |
| 94 | 254 | Henderson, John 3 n e cor 5 f h |
| 95 | 256 | Harris, Herman J 1 e 1/2 w 1/2 3 t h |
| 96 | 257 | Harris, Henry W 1 e 1/2 w 1/2 3 f h |
| 97 | 258 | Hornor, Isaac T 1 e 1/2 8 t h |
| 98 | 259 | Hornor, Thomas 1 e half 8 f |
| 99 | 260 | Hornor, Thomas, Esq 1 w half 8 f h |
| 100 | 271 | Howell, George M 4 s pt n half 12 f h |
| 101 | 272 | Howell, William 4 s half 12 t h |
| 102 | 273 | Hainer, James 4 s half 12 f |
| 103 | 278 | Henderson, Joseph 5 e half 10 t h |
| 104 | 279 | Henderson, William 5 o half 10 t |
| 105 | 280 | Henderson, James, Sr., 5 e half 10 f h |
| 106 | 316 | Howell, Isaac 3 e e pt 7 f |
| 107 | 694 | Hersee, John 1 n w pt w half 12 f |
| 108 | 294 | Johnson, Francis 3 n half 1 t h |
| 109 | 297 | Joyce, Robert 4 n half 7 t h |
| 110 | 299 | Jennie, John 3 n w cor 12 t h |
| 111 | 306 | Johnson, William 1 n pt 2 t h |
| 112 | 307 | Johnson, John 1 n pt 2 f |
| 113 | 310 | James, Robert 2 e half 12 t h |
| 114 | 311 | James, William 2 e half 12 f |
| 115 | 29 | Knill, John 3 n half 10 f |
| 116 | 317 | Kane, Thomas 4 n e 1/2 2 f h |
| 117 | 318 | Kinsley, Marcus 3 w half n w 1/2 4 f h |
| 118 | 337 | Landon, Stephen 5 o e pt 1 f h |
| 119 | 338 | Landon, Stacey 5 e e pt 1 f h |
| 120 | 339 | Lattimer, John 5 n half 6 f h |
| 121 | 340 | Lattimer, James 5 n half 6 f h |
| 122 | 341 | Lattimer, Andrew 5 n half 7 f h |
| 123 | 342 | Loves, Thomas 2 pt n half 9 t h |
| 124 | 343 | Loves, Joseph 2 pt n half 9 f h |
| 125 | 361 | Lewis, William 1 s w pt 7 f h |
| 126 | 377 | Lewis, John N 5 s pt 12 f h |
| 127 | 176 | Miller, F G 5 n half 2 f |
| 128 | 381 | Molska, John N 4 s w 1/2 9 f h |
| 129 | 385 | Morey, Charles 4 e half n w 1/2 4 t h |
| 130 | 390 | Moore, Alexander 4 n e 1/2 9 f |
| 131 | 392 | Morey, James 2 pt s e 1/2 5 f h |
| 132 | 393 | Morey, William 2 pt s e 1/2 5 f h |
| 133 | 393 | Miller, James, 4 n w cor 8 f |
| 134 | 410 | Monett, George 1 w pt 3 f h |
| 135 | 411 | Monett, William 1 w pt 3 f h |
| 136 | 413 | Martin, Elam, Jr., 1 n w pt 7 o |
| 137 | 414 | Martin, Elam, Sr., 1 n w pt 7 f |
| 138 | 415 | Martin, Joseph 1 n w pt 6 f h |
| 139 | 380 | McIntyre, John 5 s e cor 6 f h |
| 140 | 382 | McLean, John 5 n w cor 6 f h |
| 141 | 388 | McAlister, Alexander 4 s w pt 5 f h |
| 142 | 389 | McIsaac, Daniel 4 n e 1/2 9 t h |
| 143 | 412 | McIntyre, Hector 5 s w cor 3 f h |
| 144 | 567 | McLeod, Lewis 1 n pt 3 f |
| 145 | 459 | Oliver, Thomas 4 e half 8 f h |
| 146 | 181 | Perley, Daniel 3 s pt 9 f |
| 147 | 469 | Pailing, Edward 3 s w 1/2 12 f h |
| 148 | 470 | Parnall, Theodore N 4 all 3 t h |
| 149 | 471 | Parnall, Lewis 4 all 3 t |
| 150 | 472 | Parnall, Edward N 4 all 3 f h |
| 151 | 476 | Parnall, George R 1 s pt 1 f h |
| 152 | 477 | Parnall, Oliver 1 s pt 1 t h |
| 153 | 478 | Pelton, Joshua 1 s o pt w half 1 f h |
| 154 | 479 | Prior, Henry 1 s pt 6 f h |
| 155 | 513 | Parnall, George, Jr., 2 s half 1 t h |
| 156 | 671 | Pelton, Hamilton 3 e 1/2 6 f |
| 157 | 12 | Rounds, William 4 e e pt 1 f |
| 158 | 239 | Ramsay, John 2 s w pt 4 f |
| 159 | 500 | Rutherford, Thomas 5 e half 8 f h |
| 160 | 501 | Rutherford, Thomas 4 w pt 8 t h |
| 161 | 502 | Rutherford, William 4 w pt 8 t h |
| 162 | 505 | Rowe, Richard 4 n pt 2 t h |
| 163 | 515 | Ramsay, James 2 s half 4 f h |
| 164 | 516 | Reading, William 1 n w pt 4 f h |
| 165 | 521 | Rathbun, Horace 5 w e pt 12 f h |
| 166 | 565 | Ramsay, Jonathan 2 o half 2 f |
| 167 | 431 | Skelly, Patrick 2 s half s w 1/2 1 f |
| 168 | 544 | Steele, Edward 4 o pt 9 f |
| 169 | 548 | Sibbick, William 2 e half 8 t |
| 170 | 550 | Sibbick, William 3 n half n w 1/2 7 f h |
| 171 | 560 | Scott, Walter 1 n e pt 1 t h |
| 172 | 561 | Scott, George 1 n e pt 1 f |
| 173 | 564 | Sibbick, George 2 o half 2 t h |
| 174 | 566 | Southwick, Daniel 1 n pt 3 t h |
| 175 | 580 | Smiley, James 1 w pt 11 t h |
| 176 | 587 | Smiley, Robinson 1 w pt 11 f h |
| 177 | 592 | Smith, John A 5 pt s e 1/2 2 f |
| 178 | 593 | Showers, Daniel 1 s e pt 5 f h |
| 179 | 594 | Showers, William 2 w half 5 f h |
| 180 | 225 | Townsend, Sherman E 5 s w pt 9 f |
| 181 | 295 | Tapley, Chesterfield 3 n half 1 f h |
| 182 | 345 | Tisdale, Joseph C 3 s pt n half 7 f |
| 183 | 612 | Thompson, Thomas 5 e e pt 9 t h |
| 184 | 614 | Tolbert, Lorenzo 3 n e 1/2 3 t h |
| 185 | 615 | Todd, William M 3 s e cor 4 f h |
| 186 | 617 | Taylor, Edward 5 s pt 1 and 2 f h |
| 187 | 618 | Tansley, Joseph 4 s half 7 t h |
| 188 | 619 | Tansley, Thomas 4 s half 7 f h |
| 189 | 621 | Thomas, Stephen 2 s half 8 t h |
| 190 | 622 | Thomas, David 2 s half 8 f |
| 191 | 623 | Tune, William 3 w pt s w 1/2 11 t h |
| 192 | 625 | Tutman, Henry 2 s w pt 2 t |
| 193 | 626 | Tufford, John 2 s w pt 2 f |
| 194 | 638 | Ticknell, John 2 n pt w half 2 f h |
| 195 | 634 | Thorn, Reuben 1 e half 12 f h |
| 196 | 639 | Tremmer, Matthew 2 pt n half 9 t h |
| 197 | 640 | Tremmer, Jacob 2 pt n half 9 t h |
| 198 | 652 | Underhill, John 4 n e 1/2 1 f |
| 199 | 653 | Vanhorn, William 5 w half 8 f h |
| 200 | 656 | Vowels, William 2 n e 1/2 5 f h |
| 201 | 78 | Wood, Nathaniel 3 n w 1/2 8 f h |
| 202 | 670 | Wallace, Joseph 3 n e 1/2 6 t h |
| 203 | 678 | White, David A 5 o e pt 4 f |
| 204 | 690 | Walden, Samuel 2 s w 1/2 3 t h |
| 205 | 692 | White, Henry 1 n w cor 1 f h |
| 206 | 693 | Wood, Crossfield 1 n w pt w half 12 t h |
| 207 | 701 | Wallace, Robert 2 w half 8 t h |
| 208 | 715 | Wedge, J 7 e e pt, 1 w e pt 13, 12 f h |
| 209 | 626 | Young, Abram 3 n w 1/2 3 f |

POLLING SUBDIVISION NO. 2.

| | | |
|----|-----|---------------------------------------|
| 1 | 1 | Abbott, Walter D 6 s pt 4 t h |
| 2 | 19 | Briers, William 6 s w cor 1 f h |
| 3 | 32 | Bonney, John 7 e 1/2 n o 1/2 8 f h |
| 4 | 33 | Bannister, John 7 n pt 5 f h |
| 5 | 34 | Buchannan, Walter 7 n pt 4 f h |
| 6 | 35 | Bechlet, John 7 n pt 4 f |
| 7 | 36 | Barker, Samuel 7 e 1/2 of n w 1/2 8 f |
| 8 | 45 | Briers, Peter 6 s pt 1 t h |
| 9 | 62 | Bennett, Josiah 7 n e 1/2 11 t h |
| 10 | 87 | Bray, John 2 n pt 1 f |
| 11 | 156 | Brown, John J 8 n 1/2 10 f h |
| 12 | 187 | Burns, George 6 s pt 4 f |
| 13 | 19 | Bennett, William H 9 w pt 12 f h |
| 14 | 66 | Chrysler, George 6 s w 1/2 10 f h |
| 15 | 70 | Cronkwright, Smith 6 s w 1/2 12 t |
| 16 | 73 | Chrysler, William H 6 s pt 4 f h |
| 17 | 79 | Charles, John M 6 s o pt 3 f h |
| 18 | 80 | Cox, Henry 6 s w cor 3 f h |
| 19 | 81 | Catton, John 6 s pt 5 f h |



The Township of Burford, 1874.

| | | | | | | | | |
|----|-----|-----------------------------------|-----|-----|-------------------------------------|-----|-----|--------------------------------------|
| 19 | 83 | Caulton, James 7 n pt 4 th | 97 | 253 | Herrett, Thomas N 7 n pt 3 fh | 171 | 320 | Payley, Thomas 9 all 1 fh |
| 20 | 85 | Carter, Joseph 6 s pt 1 fh | 98 | 278 | Henderson, Joseph 6 n ce pt 10 t | 175 | 376 | Bounds, William 7 n pt 6 fh |
| 21 | 88 | Coker, Fuller 7 n pt 3 fh | 99 | 279 | Henderson, William 6 n ce pt 10 t | 176 | 392 | Rider, Rowland 7 s ce pt 12 fh |
| 22 | 89 | Coverley, George 7 ce pt 1 fh | 100 | 280 | Henderson, Jas sr. 6 n ce pt 10 fh | 177 | 503 | Rowe, William 7 ce pt 7 fh |
| 23 | 90 | Crawley, John 6 ce pt 9 th | 101 | 286 | Hottum, Frederick 7 pt ce pt 12 fh | 178 | 504 | Rush, Richard 6 s pt 5 fh |
| 24 | 93 | Cowan, Jeremiah 7 n pt 11 fh | 102 | 563 | Hammer, Francis 7 ce pt 7 fh | 179 | 508 | Rush, William 6 s pt 4 fh |
| 25 | 93 | Cowan, Jeremiah 7 n pt 11 fh | 103 | 36 | Hills, Thomas 9 w ce pt 12 t | 180 | 509 | Rider, Gideon 7 ce pt 1 fh |
| 26 | 125 | Caven, Robert 6 s ce pt 6 th | 104 | 236 | Harley, William 8 s ce pt 11 t | 181 | 510 | Ross, Thomas 11 s pt 4 fh |
| 27 | 35 | Cryster, Alphens 9 w ce pt 12 fh | 105 | 237 | Harley, James 8 s ce pt 10 t | 182 | 511 | Rathburn, Niles 7 s w pt 12 fh |
| 28 | 37 | Cardwell, Thomas 9 s pt 11 t | 106 | 238 | Harley, Archibald 8 s pt 10 fh | 184 | 512 | Rathburn, Nelson 7 s ce pt 11 fh |
| 29 | 38 | Cardwell, Robert 9 s pt 11 t | 107 | 239 | Hehn, William 8 s half 1 th | 185 | 117 | Ryder, Henry 8 w half 12 fh |
| 30 | 181 | Clark, Hugh 8 s w cor 3 fh | 108 | 2 | Jones, Thomas 6 s pt 4 f | 186 | 163 | Stewart, George 6 n pt 5 f |
| 31 | 185 | Collins, John 9 n pt 3 fh | 109 | 292 | Johnson, John 6 n pt ce pt 7 th | 187 | 515 | Settall, James 6 ce pt 1 th |
| 32 | 187 | Carter, Robert 9 ce pt 7 t | 110 | 296 | Jones, Thomas I. 6 s w pt 2 fh | 188 | 547 | Stewart, Elisha 6 n pt 1 fh |
| 33 | 188 | Carter, Jacob P 9 ce pt 7 fh | 111 | 301 | Jones, Benjamin 7 ce pt 4 fh | 189 | 553 | Stinson, Wm 11 6 s pt 3 th |
| 34 | 189 | Cairns, James jr. 9 s pt 8 th | 112 | 302 | Jull, John H 7 s half 5 th | 190 | 551 | Shine, Timothy 6 s pt 1 fh |
| 35 | 190 | Cairns, James sr. 9 s pt 8 th | 113 | 304 | Jull, James E 7 n half s half 7 th | 191 | 555 | Serpell, William 11 6 s pt 5 fh |
| 36 | 191 | Clement, Mark 9 s pt 9 fh | 114 | 251 | Johnson, William J 7 n pt 11 fh | 192 | 556 | Sherwood, Jacob 7 n pt 18 5 fh |
| 37 | 184 | Dutcher, Thomas J 6 ce pt 1 fh | 115 | 251 | Johnson, Baptiste 8 s ce pt 4 th | 193 | 558 | Swazy, Ralph 7 n pt 3 th |
| 38 | 195 | Douglass, George 6 ce pt 1 t | 116 | 46 | Koucher, Elijah jr. 6 s pt 11 f | 194 | 562 | Sherman, Albert 7 ce pt 7 th |
| 39 | 186 | Douglass, William 6 n ce pt 2 fh | 117 | 126 | Keachie, John M 6 s pt 6 fh | 195 | 576 | Sullivan, Stephen 6 ce pt 12 fh |
| 40 | 187 | Denby, Joseph 6 s pt 1 fh | 118 | 316 | Kay John 6 n pt 4 th | 196 | 578 | Shaver, W 7 s w pt a half 11 & 12 fh |
| 41 | 188 | Denby, John 6 s pt 1 fh | 119 | 319 | Koucher, Elijah 7 n pt 1 fh | 197 | 534 | Scars, William B 7 n pt 4 th |
| 42 | 141 | Dun n, Daniel 6 s pt 4 fh | 120 | 250 | Kelly, Horatio 8 all 7 t | 198 | 592 | Smith, John A 6 s w pt 2 fh |
| 43 | 142 | Day, Ira 7 n pt 4 th | 121 | 260 | Kelly, Alem 8 all 7 t | 199 | 127 | Shillington, James W 9 w ce pt 12 fh |
| 44 | 113 | Day, Merritt 7 n pt 4 fh | 122 | 261 | Kelly, Usual O 8 all 7 fh | 200 | 128 | Steedman, Abraham 9 ce pt 12 fh |
| 45 | 147 | Dauiel, Lewis I 6 n w pt 2 fh | 123 | 262 | Kettle, James 9 s w pt 7 fh | 201 | 130 | Smith, Robert 9 w ce pt 12 fh |
| 46 | 148 | Daniel, William 6 pt n ce pt 3 fh | 124 | 817 | Lane, George 7 s ce cor 1 fh | 202 | 131 | Shillington Edward 9 s half 12 th |
| 47 | 155 | Durham, Daniel 6 n pt 10 f | 125 | 348 | Lightly, George 6 s pt 4 fh | 203 | 135 | Shillington, John jr. 9 s half 11 t |
| 48 | 159 | Daniel, George 6 s ce pt 1 th | 126 | 349 | Lester, John N 7 pt 10 fh | 204 | 136 | Shillington, Alex. 9 s half 11 t |
| 49 | 47 | Dean, Walter 9 s ce pt n pt 12 fh | 127 | 350 | Lester, Henry 7 ce pt 10 fh | 205 | 137 | Shillington, David 9 s half 11 t |
| 50 | 200 | Dewitt Frederick 8 s ce pt 4 th | 128 | 372 | Lloyd, James 6 s pt 4 fh | 206 | 138 | Shillington, Charles 9 s half 11 t |
| 51 | 202 | Dutcher, Ephraim 9 n pt 5 fh | 129 | 373 | Lloyd, Charles 6 ce pt 4 th | 207 | 139 | Shillington, John Sr. 9 s half 11 t |
| 52 | 206 | Dutcher, Levi N 9 s pt 5 fh | 130 | 376 | Lodge, Alfred 7 n pt 6 th | 208 | 144 | Stuart, Jonathan 8 n ce pt 11 fh |
| 53 | 163 | Elwidge, George 6 n pt 5 th | 131 | 710 | Lovejoy, William 6 ce pt 12 f | 209 | 145 | Stuart, James 8 n ce pt 11 fh |
| 54 | 166 | Elherby, Joseph 6 s pt 5 th | 132 | 81 | Loudon, Richard 9 n pt 12 th | 210 | 397 | Stuart, George 8 n w pt 3 th |
| 55 | 168 | Elliot, Matthias 7 n pt 3 fh | 133 | 264 | Lewis, William H 9 s ce pt 10 fh | 211 | 398 | Stuart, Elisha 8 n w pt 3 f |
| 56 | 179 | Fountain, Fleming 6 ce pt 8 fh | 134 | 160 | Matthews, S G 6 ce pt 1 f | 212 | 379 | Smith, Edmund 8 s pt 2 fh |
| 57 | 182 | Fowler, Giles H 6 s pt 5 th | 135 | 293 | Mott, Jacob 6 n pt ce pt 7 f | 213 | 340 | Smith, Benjamin 9 s w pt 2 f |
| 58 | 183 | Frazee, David 6 s pt 5 f | 136 | 378 | Messner, Wesley 6 n w pt 7 f | 214 | 341 | Standing, Thomas 9 n half 6 fh |
| 59 | 184 | Fowler, John M 6 s pt 3 fh | 137 | 394 | Miller, Andrew 6 ce pt 3 th | 215 | 342 | Silverthorn, Joseph 9 s pt 3 th |
| 60 | 185 | Flouelling, Thos B 7 ce pt 4 fh | 138 | 395 | Miller, Jacob 6 ce pt 3 fh | 216 | 343 | Silverthorn, Wm W 9 s half 4 th |
| 61 | 186 | Fowler, George H 6 s pt 4 th | 139 | 396 | Munger, William 7 n pt 4 th | 217 | 344 | Silverthorn, Thomas 9 s half 4 fh |
| 62 | 187 | Fowler, Caleb P Esq. 6 s pt 5 fh | 140 | 399 | Maginn, James 7 n ce cor 1 fh | 218 | 370 | Smith, Joseph H 9 s ce pt 2 f |
| 63 | 188 | French, Gilbert W 6 s pt 4 th | 141 | 400 | Muir, Robert Esq. 7 pt w half 4 fh | 219 | 91 | Townsend, H G 6 ce pt 9 f |
| 64 | 191 | Frazer, Joseph 7 ce pt 1 th | 142 | 401 | Miller, Allan H 7 n pt 2 th | 220 | 483 | Townsend, John G 7 n pt 1 f |
| 65 | 193 | Fowler, Nathan B 7 n ce pt 10 fh | 143 | 402 | Miller, F G 7 n pt 2 th | 221 | 616 | Turner, Jonathan 7 n pt 1 fh |
| 66 | 201 | Fonger, William 6 n ce cor 11 f | 144 | 405 | Mudge, Richard C 7 ce pt 4 fh | 222 | 627 | Tisdale, Wm. W 6 w half 8 th |
| 67 | 202 | Fowler, David 6 ce pt 12 fh | 145 | 680 | Maginn, Thomas 7 n pt 2 f | 223 | 628 | Tisdale, Lot S 6 w half 8 th |
| 68 | 203 | Fowler, Charles 6 ce pt 12 fh | 146 | 98 | Marshall, William 8 ce half 12 fh | 224 | 630 | Tillison, Levi 6 s pt 4 fh |
| 69 | 559 | Boyle, H 6 ce pt 8 f | 147 | 99 | Moore, Jonathan 9 n pt 11 fh | 225 | 631 | Tillison, Joshua 6 ce pt 4 th |
| 70 | 189 | Goudy, Francis 6 s pt 4 f | 148 | 269 | Messear, David 8 n w pt 4 fh | 226 | 644 | Thomas, Samson 6 n pt 12 th |
| 71 | 218 | Greuny, Robert 7 n pt 3 th | 149 | 270 | Miles, George 9 n ce pt 2 fh | 227 | 650 | Terroberry, John 6 s pt 11 fh |
| 72 | 214 | Gibbard, Richard 7 ce pt 4 fh | 150 | 278 | Metcalfe W H 8 w ce pt 3 fh | 228 | 651 | Terroberry, John F 6 ce pt 10 fh |
| 73 | 216 | Gamage, Thomas 7 s pt 6 th | 151 | 279 | Metcalfe, Frankliu A 8 s pt 6 fh | 229 | 82 | Thompson, Wellington 9 n pt 12 f |
| 74 | 216 | Green, John 6 w pt 4 fh | 152 | 280 | Metcalfe, Andrew D 8 n pt 6 fh | 230 | 371 | Tom, John 9 n ce pt 4 fh |
| 75 | 220 | Groom, William 7 ce pt 4 fh | 153 | 284 | Marshall, Francis 9 n pt 7 fh | 231 | 664 | Vanhorn, Charles 6 s w pt 11 fh |
| 76 | 585 | Gillespie, Thomas 7 n pt 4 f | 154 | 283 | McKenzie, Richard 6 s ce cor 1 fh | 232 | 149 | VanEvery, Edgar 9 ce pt 12 th |
| 77 | 230 | Gamage, William 8 n ce pt 5 fh | 155 | 403 | McCallery, James 7 n pt 3 fh | 233 | 219 | Webster, Stephen 7 n pt 3 f |
| 78 | 282 | Gage, Charles 9 n pt 3 fh | 156 | 406 | McWilliams, W A 7 s w pt 2 th | 234 | 303 | Winskil, Thomas 7 s half 5 fh |
| 79 | 167 | Henderson, Alex 6 ce pt 5 f | 157 | 407 | McWilliams, John 7 s w pt 2 fh | 235 | 374 | Ward, Alfred 7 n pt 4 f |
| 80 | 222 | Hearne, James C 6 n ce pt 5 fh | 158 | 408 | McWilliams, William 7 s ce cor 4 fh | 236 | 666 | Whelpley, John 6 s pt 3 fh |
| 81 | 227 | Hathaway, Daniel 6 n pt 4 & 5 th | 159 | 270 | McWilliams, Alexander 8 n pt 2 fh | 237 | 667 | Williams, Andrew J 6 s w pt 5 th |
| 82 | 223 | Hathaway, Peter 6 n pt 4 & 5 th | 160 | 271 | McWilliams, W J 8 n pt 1 fh | 238 | 668 | Williams, Jonah H 6 s w pt 5 fh |
| 83 | 229 | Horning, Joseph 6 s pt 1 fh | 161 | 272 | McWilliams, Wm 8 n ce cor 2 fh | 239 | 678 | Weatnerby, Freeman 6 s pt 3 th |
| 84 | 240 | Hearne, William 6 s pt 3 th | 162 | 274 | McCrimmon, Anson G 9 n w pt 2 th | 240 | 675 | Whittaker, John 6 pt 5 th |
| 85 | 241 | Hearne, James sr. 6 s pt 3 f | 163 | 275 | McCrimmon Archibald 9 n w pt 2 f | 241 | 676 | Whittaker, Robert 6 s pt 5 fh |
| 86 | 242 | Hall, Alfred 6 s pt 3 fh | 164 | 456 | Neff, William 6 ce pt 10 th | 242 | 677 | Wooden, William H 7 n pt 4 fh |
| 87 | 243 | Horton, James 6 s pt 4 fh | 165 | 457 | Neff, Peter 6 s ce pt 10 th | 243 | 679 | Wooden, Charles N 7 n pt 2 th |
| 88 | 244 | Harbottle, Robert 6 s pt 4 fh | 166 | 458 | O'Neil, James 6 s ce pt 1 fh | 244 | 681 | Wooden, Ira C 7 ce pt 4 fh |
| 89 | 245 | Hammar, James 6 ce pt 5 fh | 167 | 467 | Potruff, George 7 n pt 1 fh | 245 | 682 | Whale, John H 7 ce pt 4 fh |
| 90 | 246 | Hunt, Robert 7 n pt 5 fh | 168 | 473 | Penman, George 7 ce pt 4 fh | 246 | 686 | Whale, Robert 7 ce pt 4 f |
| 91 | 247 | Hull, Thomas 6 ce pt 1 th | 169 | 474 | Perrin, David 7 s w pt 8 f | 247 | 687 | Wooden, Ira Sr. 7 s pt 10 fh |
| 92 | 248 | Hull, William 7 n pt 1 th | 170 | 475 | Perrin, Andrew 7 s w pt 8 f | 248 | 689 | Wooden, Wellington 7 s pt half 7 th |
| 93 | 249 | Hann, Benjamin F 7 e half 2 th | 171 | 491 | Potruff, Peter 7 s ce pt 12 th | 249 | 709 | Wedge, Richard 6 s pt 12 th |
| 94 | 250 | Hann, Matthias 7 e half 2 th | 172 | 498 | Perley, Charles S Esq. 7 all 1 fh | 250 | 720 | Yeigh, Edmund Esq. 7 n pt 3 fh |
| 95 | 261 | Haywood, Richard 7 n pt 3 fh | 173 | 319 | Pollard, Arthur 9 n half 3 fh | | | |
| 96 | 252 | Heaton, John 7 n pt 3 fh | | | | | | |

Revised
(Signed) J. L. Jones
By George Brant.

POLLING SUB-DIVISION NO. 3.

1 401 Akins, Adam 10 s 12 f
 2 402 Akins, Edward 10 s 12 f
 3 405 Arnold, Joseph 11 s of n 11 f h
 4 158 Brudshaw, George 10 s 2 f h
 5 159 Bawtinhimer, John A 10 s pt 3 t h
 6 162 Buckborough, Daniel 11 n w 3 f h
 7 163 Burton, Richard 10 w pt 6 f
 8 164 Burton, Robert 10 sw cor 6 f h
 9 167 Bowman, James H 13 w 9 f h
 10 168 Bradley, Joseph 13 se 9 t h
 11 170 Burch, Stephen 13 s 10 f h
 12 171 Bowman, Harvey 13 n of s 10 t h
 13 173 Butler, Nathaniel 11 w 2 t h
 14 175 Brown William 14 c pt 1 f h
 15 176 Bowman, Abraham 14 s 4 t h
 16 177 Bowman, Hugh 14 s 4 t
 17 178 Bowman, Isaac 14 s 4 t h
 18 179 Bowman, John 14 s 4 f h
 19 180 Brown, Richd G 14 s half n half 3 t h
 20 182 Brabbs, Hardy 14 se 5 f h
 21 183 Brabbs, Hardy jr 14 se 5 f h
 22 408 Byers, Robert 11 se pt 11 f h
 23 414 Bowman, Peter 18 nw cor 12 f h
 24 415 Bowman, Ephraim 12 sw pt 12 f h
 25 416 Brenton, James A 13 n half 11 f h
 26 428 Baker, Ira 14 sw pt 12 f h
 27 87 Cardwell, Thomas 12 nw 7 t
 28 88 Cardwell, Robert 12 nw 7 t
 29 187 Carter, Robert 10 ne pt 9 t
 30 188 Carter, Jacob P 10 ne pt 9 f
 31 193 Carter, Joseph 11 n pt nw 8 f h
 32 194 Clark, Charles 13 sw 8 f h
 33 195 Crabb, William 14 s half 7 t h
 34 196 Crabb, George 14 s half 7 t
 35 197 Crabb, Henry 14 s half 7 f h
 36 198 Cox, James 18 ce pt 1 t h
 37 376 Clement Rober A 14 se pt 1 f
 38 417 Coldwell, Theodore H 13 n half 11 f h
 39 480 Chapman, George W 14 lots 1 & 2 b
 3 12 f h
 40 584 Chandler, James 14 nw 12 f
 41 203 Dieckot, William 10 n pt 3 t
 42 204 Dieckot, Daniel 10 n pt 3 f h
 43 207 Durham, Rodolphus 14 ne pt 1 f h
 44 208 Darby, William 13 se pt 1 t h
 45 210 Eddy, Judson 12 n pt 1 t
 46 211 Eddy, Constant 12 n pt 1 f h
 47 212 Eddy, John 12 ce pt 1 f h
 48 219 Elliot, William B 11 ne 3 f h
 49 214 Eddy, Joseph 12 s pt 2 f h
 50 215 Eddy, Malcolm 18 se pt 1 f
 51 397 Eddy, Eli 13 ce pt 1 f
 52 186 Fowler, George H 10 ne pt 7 f
 53 217 Forsyth, Elijah 11 nw pt 3 f h
 54 218 French, George J 11 e half 8 t h
 55 220 Fitzgerald, Thomas 11 ce pt 10 f h
 56 221 Foster, Albert 13 se pt 2 t
 57 222 Foster, Alonzo 13 se pt 2 f h
 58 223 Freeland, John 14 ne pt 4 f h
 59 224 Foster, Horace 14 we pt 1 f
 60 225 Freeland, Daniel 14, n pt 4 f h
 61 181 Goring, Frederick A 14 s half n half 3 f
 62 226 Glover, Robert 13 ce pt 1 t
 63 227 Glover, Anthony 13 ce pt 1 f h
 64 228 Gilmour, Joseph 11 all 8 t h
 65 233 Gage, Russell S 12 ce pt 1 f h
 66 287 Gage Russell O 12 s half 4 f h
 67 459 Givins, Alexander 13 se cor 12 f h
 68 172 House, William 13 n half s half 10 f
 69 240 Holt, Lewis 10 ne pt 6 f h

70 212 Hinsley Thomas 11 s half n half 10 t h
 71 243 Hinsley, Robert 11 s half n half 10 h
 72 241 Hilliard, Samuel 12 s half 8 f h
 73 245 Hooker, Albert 14 ce pt 1 t h
 74 246 Hooker D'Arcy 14 ce pt 1 f
 75 247 Hardy, Arthur S 14 sw 11 f
 76 247 Hixon, Henry F 14 ce pt 1 f h
 77 248 Harkison, William 13 ce pt 1 f h
 78 465 Haylock, Robert 12 s half 11 t h
 79 472 Hill, Thomas 13 we pt 12 f h
 80 169 Johnson, William 13 se 9 f
 81 251 Johnson, William James 10 se 9 f h
 82 253 Johnson, Thomas Henry 12 n half 9 t h
 83 254 Johnson, William James 12 s half 9 t
 84 255 Johnson, Richard 12 n half 9 f h
 85 256 Johnson, Baptiste jr 12 ne 8 t
 86 258 Joiner, Stephen 10 sw 9 t h
 87 39 Kelly, Robert S 12 nw 7 f
 88 161 Kent, James 10 s half 5 f
 89 259 Kelly, Iforatio 10 nw qr 9 f
 90 260 Kelly, Allen 10 nw qr 9 t
 91 261 Kelly, Usual O 10 nw qr 9 f
 92 263 Kiff, William 11 nw pt 3 f h
 93 264 Lewis, William H 10 n half 2 t h
 94 878 Lake, William 14 ne qr 9 f
 95 507 Lockman, Erastus 14 B 1 & 2 12 f h
 96 174 Moore, Jacob 11 w half 2 f
 97 219 Mungler, James 11 ce half 8 f
 98 266 Markle, Robert 14 ne qr 6 f
 99 268 Markwinter, Charles 14 sw qr 9 f h
 100 276 Moore, Paul 13 ce pt 1 t h
 101 278 Metcalfe, William H 10 ce pt nw qr 8 f
 102 281 Miles, William F 10 n half 1 t h
 103 282 Miles, William 10 all 1 f
 104 283 Miles, Robert H 10 s half 1 t h
 105 284 Marshall, Francis 10 ce half 10 f
 106 286 Merritt, Gilbert 12 s pt n half 1 f h
 107 287 Miles, Elliot 11 ne qr 7 f h
 108 289 Malcolm, James 13 n pt e half 9 f h
 109 290 Merritt, Robert 12 sw qr 6 f
 110 292 Messacar, Seymour 13 nw qr 3 t
 111 293 Messacar, Albert 13 nw qr 3 t
 112 294 Messacar Silas 13 nw qr 3 f h
 113 296 Merritt, Isaac B 13 ne qr 3 f h
 114 297 Markle, John 14 ne cor 2 f h
 115 298 Malcolm, George 13 ce pt 1 f h
 116 300 Malcolm, Marcus 18 ce pt 1 t h
 117 302 Malcolm, Duncan 14 ce pt 1 t h
 118 208 Malcolm, John R 13 ce pt 1 f h
 119 308 Metcalfe, Peter 13 n pt s half 4 f h
 120 309 Murray, Michael 14 n qr 3 t h
 121 310 Murray, William 14 n qr 3 f h
 122 329 Mitchell, Daniel 10 se qr 8 f
 123 336 Malcolm, Augustus 13 s pt 1 f h
 124 512 Malcolm, Eliakim 14 B 2 12 f h
 125 513 Mather, Allen 14 e half 12 f h
 126 532 Mitchell, George F 14 sw pt 12 f h
 127 583 Matthewman, Walter 14 nw qr 12 t h
 128 620 Miller, William 13 s half 11 f h
 129 267 MeLem, William Andrew 14 ne pt 1 t h
 130 285 McCormick, James 11 s pt 9 f h
 131 290 McIsaac, Malcolm 12 sw qr 6 t h
 132 295 McCombs, Truman, 14 se cor 2 f h
 133 304 McCombs, John 14 sw qr 5 t
 134 305 McCombs, Nathan 14 sw qr 5 f h
 135 306 McCombs, Joseph 13 se pt 3 f h
 136 355 McGuin, James 10 w half 7 f
 137 510 McCombs, Charles 13 s qr 12 t h
 138 616 McDonald, Hector 10 sw qr 11 t h
 139 522 McIrvine, James 12 s pt north half 12
 f h
 140 523 McIrvine, John II sw qr II f
 313 Neal, Michael 10 nw pt 6 f h

142 314 Nunnick, Joseph 14 sw pt 2 t h
 143 315 Nunnick, William 14 sw pt 2 t
 144 317 Ollett, John 11 sw pt 10 t h
 145 318 Ollett, William 11 sw pt 10 f
 146 538 Oles, Levi 12 n half 11 f h
 147 321 Postell, William 11 se cor 10 f h
 148 322 Pepper, George 11 ne qr 2 f h
 149 323 Phipps, John 10 s half 4 f h
 150 321 Pettit, John G 14 n pt 2 f h
 151 Phillips, George 14 ne pt 1 f
 152 325 Rush, John 10 n qr 4 f h
 153 326 Rand, Charles 11 s half 1 f h
 154 327 Ransom, Thomas 10 se qr 8 t h
 155 328 Ransom, William 10 se qr 8 t
 156 330 Rand, Daniel 12 s half 9 f h
 157 331 Robertson, John I 14 all 10 t h
 158 332 Roswell, Andrew 14 se cor 8 f h
 159 334 Roswell, Jacob 14 s half 3 f h
 160 353 Robinson, John II n half s half 7 f
 161 135 Shillington, John jr 10 n half 12 t
 162 136 Shillington, Alexander 10 n half 12 t
 163 137 Shillington, David 10 n half 12 t
 164 138 Shillington, Charles 10 n half 12 t
 165 139 Shillington, John senr 10 n half 12 f
 166 335 Staunford, Charles 13 pt 1 t h
 167 345 Skinner, James 10 ne qr 5 f h
 168 346 Smith, John W 11 n half 5 f h
 169 347 Smith, Daniel 12 all 10 f h
 170 348 Smith, William Merritt 12 n & ce pt 3t
 171 349 Smith, John 12 n & ce pt 3 f h
 172 350 Smith, Charles D 11 n pt 4 t
 173 351 Smith, Russell Esq 11 n pt 4 f h
 174 352 Smith, Hiram D 11 n pt 6 f h
 175 354 Smith, George A 10 w half 7 t h
 176 357 Smith, Benjamin 13 n pt 4 f h
 177 358 Smith, James A 13 s pt n half 4 f h
 178 361 Stewart, James 13 ne cor 1 f h
 179 362 Salisbury, William 18 sw qr 6 t h
 180 364 Silverthorn, John N jr 13 se qr 8 t
 181 365 Silverthorn, John N 13 se qr 8 f h
 182 366 Silverthorn, Ira 14 n qr 8 t h
 183 367 Shook, James 14 w half 6 f
 184 369 Scott, Robert 13 ce pt 1 f h
 185 380 Smith, Josiah 11 s half 3 f h
 186 507 Shaver, George 11 all 12 f h
 187 583 Shelly, Dennis 24 se pt 12 f h
 188 229 Terreberry, John 11 all 8 f
 189 301 Teggart, Edward 13 ce pt 1 f
 190 359 Teeter, Henry 13 n pt s half 4 t
 191 586 Thompson, James 14 e half 11 f h
 192 587 Tuttt, Henry 14 sw qr 12 f h
 193 466 Utter, David 12 s half 11 f
 194 199 Wallace, James 13 ce pt 1 f
 195 205 Williams, Elias 10 s half n half 4 f
 196 363 Wheeland, James 13 sw qr 6 f
 197 368 Wood, Samuel 14 w half 6 f h
 198 374 Wheeler, William 14 ce pt 1 t h
 199 375 Wheeler, Thomas 14 se pt 1 t
 200 377 Walker, Gideon 14 ce pt 1 f h
 201 379 Whale, John 11 s half 3 t
 202 382 Wilson, John H 11 s half n half 1 f h
 203 382 Wilson, William 11 q 1 f h
 204 383 Wilson, William H 12 s half of n half of
 s half 7 f
 205 384 Williams, Thomas 10 sw qr 8 f h
 206 385 Wilsey, John 11 ce pt 10 f h
 207 386 Wheeler, Edward 12 s half 4 t h
 208 389 Westbrook, Thaddus 23 ce pt 1 t h
 209 390 Wardell, Melvin 14 w ce pt 8 t
 210 391 Wardell, Cyrus 14 w ce pt 8 f h
 211 393 Wilcox, William 14 se qr 6 f h
 212 394 Wheeland, Charles 13 ce pt 1 t
 213 395 Wheeland, Thomas 13 ce pt 1 f h

214 396 Whit
 215 398 Wineg
 216 399 Wineg
 217 600 Weir,
 218 601 Weir,
 219 619 Zimmu

POLLING

1 1 Ad
 2 4 Alle
 3 5 Alle
 4 9 Alle
 5 10 Alle
 6 11 Alle
 7 12 Alle
 8 13 Alle
 9 400 Ar
 10 401 Aki
 11 402 Aki
 12 403 Ar
 13 404 Axf
 14 580 Alm
 15 406 Bot
 16 407 Br
 17 409 Bu
 18 410 Bu
 19 411 Bo
 20 412 Bo
 21 413 Bo
 22 418 Be
 23 419 Be
 24 422 Bo
 25 423 Ba
 26 471 Bo
 27 480 Bo
 28 29 Co
 29 30 Cle
 30 42 Cle
 31 43 Cle
 32 44 Cle
 33 45 Cle
 34 429 Co
 35 431 Ca
 36 432 Co
 37 433 Co
 38 434 Cr
 39 435 Co
 40 436 Co
 41 437 Co
 42 438 Cr
 43 439 Cr
 44 441 Ca
 45 442 Ch
 46 443 Ch
 47 447 De
 48 48 De
 49 444 De
 50 564 De
 51 571 De
 52 445 E
 53 446 E
 54 447 E
 55 448 E
 56 449 E
 57 450 E
 58 451 E
 59 53 F
 60 54 F
 61 452 F
 62 453 F
 63 455 F
 64 456 F

w pt 2 t h
sw pt 2 t
o t h
pt 10 f
1 f h
cor 10 f h
qr 2 f h
f 4 f h
pt 2 f h
e pt 1 f
f h
alf 1 f h
se qr 8 t h
e qr 8 t
f 9 f h
10 f h
e cor 8 f h
alf 3 f h
ulfs half 7 f
10 n half 12 t
er 10 n half 12 t
0 n half 12 t
or 10 n half 12 f
se pt 1 t h
qr 5 f h
half 5 f h
10 f h
itt 12 n & e pt 3 t
e pt 3 f h
n pt 4 t
11 n pt 4 f h
n pt 6 f h
w half 7 t h
n pt 4 f h
pt n half 4 f h
cor 1 f h
3 sw qr 6 t h
13 se qr 8 f h
qr 8 t h
half 6 f
pt 1 f h
half 3 f h
ll 12 f h
pt 12 f h
all 8 f
e pt 1 f
pt s half 4 t
e half 11 f h
r 12 f h
lf 11 f
e pt 1 f
half n half 4 f
3 sw qr 6 f
half 6 f h
se pt 1 t h
e pt 1 t
e pt 1 f h
lf 3 t
half n half 1 f h
d q r 1 f h
2 s half of n half of
0 sw qr 8 f h
pt 10 f h
s half 4 t h
s 23 e pt 1 t h
w e pt 8 t
e pt 8 f h
se qr 6 f h
13 e pt 1 t
13 e pt 1 f h

214 396 Whittacy, Charles 13 e c pt 1 t
215 398 Winegarden, Timothy 14 nw qr 9 f h
216 399 Winegarden, Louis A 14 se qr 9 f
217 600 Weir, Henry 12 nw pt 12 f h
218 601 Weir, Arthur, 11 se cor 11 t h
219 619 Zimmermann, Ebenezer 11 s pt 12 t h

POLLING SUBDIVISION NO. 4.

1 1 Adams, Mark 10 n e pt 21 f h
2 4 Allen, George M 10 n e 18 t
3 5 Allen, James O 10 n e 18 f
4 9 Allen, Charles E 10 n e cor 22 f h
5 10 Allen, Solomon 10 n o pt 20 t
6 11 Allen, Josiah T 10 n e pt 20 f h
7 12 Allen, William R 10 n w pt 20 f h
8 13 Allen, George S 10 n w pt 20 f
9 400 Arnour, John 14 e pt e 13 f
10 401 Akins, Adam 10 s e 13 f h
11 402 Akins, Edward 10 s e 13 f h
12 403 Armour, George 11 n e pt 13 f h
13 404 Axford, Israel 11 s w 13 f h
14 580 Almos, David 14 s e pt 13 f
15 406 Bothwell, Henry 10 s w pt 15 f h
16 407 Brown, William G 11 s e pt 22 f h
17 409 Burtis, Townsend 12 n w 21 f h
18 410 Burtis, John 11 n e 21 f h
19 411 Bowman, Elias 12 s e cor 12 f h
20 412 Bowman, Daniel 12 w 13 t h
21 413 Bowman, George 12 w 13 f
22 418 Beekham, George 13 w pt 20 t
23 419 Beekham, John A 13 w pt 20 f h
24 422 Boyce, John 14 w 13 f h
25 423 Baker, Ira 14 e pt e 13 f
26 471 Bowman, John 13 s e 18 f
27 480 Bowman, Solomon 12 s e 14 f
28 29 Cochran, Charles 10 n e pt 24 f h
29 30 Clement, James 10 n e pt 24 f h
30 42 Clement, Edward 10 s & w pt 14 t
31 43 Clement, James 10 s & w pt 14 t
32 44 Clement, William 10 s & w pt 14 f h
33 45 Clement, George 10 n e 14 f h
34 429 Cole, Hamilton 14 n pt 20 t h
35 491 Cannell, John 10 s e pt 15 f h
36 492 Cornell, Ashley C 11 n 15 t
37 493 Cornell, William 11 n 15 f h
38 494 Cronkwright, Austin 13 s e pt 22 t h
39 495 Cooper, John 13 s 21 f h
40 496 Coon, George R 11 s w pt 16 f
41 497 Cornell, Samuel 14 s e pt 18 f
42 498 Cronkwright, George 14 n w 17 t
43 499 Cronkwright, Henry 14 n w 17 f h
44 441 Carter, John 14 e pt e 13 f h
45 442 Chamberlain, Aaron 14 s e pt 16 f h
46 443 Chapman, Benjamin F 14 e pt 13 f
47 47 Dean, Walter 10 s w cor 16 t
48 48 Doran, Patrick 10 e 16 f h
49 444 Davis, Francis 10 s, 24 f h
50 564 Duacan, Robert 14 s 24 f
51 571 Dean, Levi 11 s w 18 f
52 445 Entwistle, James 12 s 20 f h
53 446 Exelby, Matthew 14 s w cor 20 f h
54 447 Exelby, Joseph 14 s e cor 20 f h
55 448 Exelby, James 14 s o pt 21 f h
56 449 Exelby, Richard 14 s w pt 21 f h
57 450 Exelby, George 14 s e pt 20 f h
58 451 Exelby, John 14 s e pt 20 f h
59 53 Force, William H 10 s e pt 23 t
60 54 Force, James D 10 s e pt 23 f
61 452 Fiddin, John 11 n 16 f h
62 453 Farrall, Daniel 12 s w 15 f h
63 455 Freeman, Albert 14 e 14 f h
64 456 Freeman, William 14 e 14 f

65 457 Ghent, William B 12 s 23 f h
66 458 Ghent, James G 12 s 22 f h
67 459 Gilliam, Alexander 13 e w 13 t
68 596 Gilliam, Joshua 12 s w 21 f
69 59 Hill, John 10 n w pt 21 f
70 61 Haight, Isaac 10 n 23 t h
71 62 Haight, Hiram 10 n half 23 f h
72 63 Hawk, Gabriel 10 s e 22 f
73 61 Hartley, Caleb 10 n e pt 22 t
74 65 Hartley, James 10 n e pt 22 f h
75 66 Hawk, John, Sr 10 s e pt 16 f
76 67 Henry, Geo C 10 e half 21 f h
77 78 Hartley, Wm 10 n e pt 24 f
78 464 Huffman, David K 13 s e 13 f h
79 467 Hemmingway, Wm C 11 s e 14 t
80 468 Hemmingway, Charles 11 n e 14 t
81 469 Hemmingway, Charles 11 n e 14 f h
82 470 Hartley, John 10 s w pt 23 f h
83 471 Harris, Geo 13 s e 18 t h
84 473 Hannon, Jos 11 n w 18 t
85 474 Hannon, Geo A 11 n w 18 t
86 470 Hinsley, Wm 11 s e 24 t h
87 477 Hinsley, Burton 11 e c pt 19 f h
88 478 Hainor, John W 12 e pt 13 f h
89 479 Huffman, Samuel, 12 s e 14 t h
90 481 Huffman, Paul, Sr 13 n pt e 13 t
91 482 Huffman, Paul, Jr 13 n half 17 f h
92 483 Hammond, Wm 11 s pt n w 21 f h
93 484 Hammond, Mark 14 n half 23 f h
94 485 Hedgers, Ephraim C 14 n w 16 f
95 486 Hedgers, Chas Esq 14 e pt 17 f h
96 487 Hunt, James 13 s e pt 24 f h
97 490 Hutchison, Geo 14 s half 23 f h
98 491 He, ry, Robert 14 s e 13 f h
99 493 Holdsworth, John 12 n e pt n w 16 f
100 71 Johnson, Alex 10 n e pt 24 f h
101 77 Leffer, Joseph 10 n e pt 24 f h
102 86 Lockyer, Wm 10 n e pt 22 f h
103 495 Lee, Chas W 11 s & w pt 17 f
104 496 Lee, Jas S 11 n e pt 18 f h
105 497 Lee Wm H 11 e pt s half 15 f h
106 498 Lee, Murray 11 n pt s half 15 t h
107 499 Lee, Alex B 10 n w 16 f h
108 500 Lee, Wm H, Jr 11 s pt 15 f h
109 501 Lumsden, Wm 14 n half 22 f h
110 502 Lumsden, John 14 s half 22 t h
111 503 Lymburner, Oscar 14 e half of w half 14 f h
112 509 Lockyer, Thos 10 n pt s half 24 f
113 89 Muir, John T 12 s e pt 17 f
114 98 Mason, Wm B 10 all 17 f
115 103 Miles, Wm 10 w half 19 t
116 515 Mizner, David 11 s e 13 f h
117 517 Moses, Jos 12 n e 23 f h
118 521 Morris, John 12 n half 20 f h
119 529 Moore, Wm S 12 n half 24 f
120 530 Mott, Elias 12 n half s half 24 f
121 621 Merrill, Wm 14 n pt 20 f h
122 90 McClellan, John 12 w pt s half 17 f
123 92 McKenzie, Robt 10 w pt 22 f h
124 514 McCubbin, Samuel 11 s 14 t h
125 519 McIntyre, Norman 13 n half 21 t h
126 524 McCormick, John 11 13 n e pt 15 t h
127 525 McCormick, John 13 n e pt 15 f
128 526 McNally, Wesley 13 e pt 14 t
129 527 McNally, Barkley 13 e pt 14 t
130 528 McNally, James 13 e pt 14 f h
131 531 McDowell, Neason 13 w half 24 f h
132 594 McCubbin, James Wesley 11 n half s half 14 f
133 535 Neal, John 11 n w 14 f h
134 108 Oles, Samuel 10 e half 19 f h
135 639 Oswald, James H 14 s e pt 16 f h

136 540 Oswald, Andrew 14 all 15 f h
137 520 Palmer, Edmund 13 n half 21 t
138 541 Phipps, David 12 n e 11 t h
139 542 Phipps, John A 12 w had 11 t
140 542 Phipps, John 12 n h 11 t
141 543 Pritchard, Wm 11 s w pt 22 f h
142 544 Poole, Samuel 13 n half 23 t h
143 545 Poole, John 13 s w pt 22 t h
144 546 Poole, Thomas 14 n half 21 f h
145 562 Ragan, John 10 s e cor 16 f h
146 553 Rish, Nicholas 11 n half 22 f h
147 554 Robinson, Daniel 11 n half 21 f h
148 555 Robinson, Wm 14 s half 20 t
149 557 Robinson, James 12 n half 22 f h
150 561 Renow, Andrew 14 e half 18 f h
151 562 Renow, John 11 e half 18 f h
152 563 Rykeman, Joshua 11 s half 21 t h
153 547 Stewart, Elisha 11 s e pt 16 f
154 121 Schooley, Azariah 10 n e pt 21 f
155 122 Schooley, Abel 10 n e pt 22 & 24 f h
156 135 Shillington, John, Jr 10 half 13 t
157 136 Shillington, Alex 10 n half 13 t
158 137 Shillington, David 10 n half 13 t
159 138 Shillington, Charles 10 n 13 t
160 139 Shillington, John sr, 10 n 13 f h
161 140 Shillington, Robert 10 n e 14 f h
162 665 Smith, Samuel 11 n e 21 f h
163 566 Smith, William 11 n w cor 23 f h
164 568 Savage, Solomon 11 s w 20 f h
165 569 Sweezy, Samuel C 11 e pt 19 f h
166 570 Savage, George 11 n w pt 20 f h
167 572 Sowers, Aaron 13 e e pt 13 f h
168 574 Scott, John 11 w 21 f
169 575 Sherman, David B 14 n w 21 t h
170 577 Stephenson, G B 13 s 23 f h
171 578 Smith, Joseph A 14 s w cor 16 f h
172 579 Smith, David H 14 s e pt 13 t h
173 489 Tuxley Nathaniel 13 n w e pt 24 f
174 684 Talfman, Daniel 13 n w pt 14 f h
175 585 Tansley, John W 11 n e cor 23 f h
176 588 Uter, Daniel 12 n e cor 13 f h
177 Uter, David 12 e e pt 13 f h
178 576 VanWalkinburg, H 14 n w 21 f
179 153 Will Ralph 10 w 21 f h
180 589 Ward, Thomas 14 s w pt 17 f
181 590 Wright, James jr, 11 e 20 t h
182 591 Wright, John 11 e 20 t
183 592 Wright, James sr, 11 e 20 f h
184 593 Wisley, Thomas 11 n 14 t h
185 595 Weaver, John 12 s w 21 t h
186 597 Witts, William 12 n 19 t h
187 598 Witts, Nelson 12 n 19 f
188 599 Webb, James 11 s e cor 18 f h
189 600 Weir, Henry 11 e pt 13 f h
190 602 Willits, John 11 n 16 f h
191 603 Whittaker, L T 13 e pt 15 f h
192 604 Willits, Joseph 13 s w 15 f h
193 605 Willits, James B 13 s o pt 16 f h
194 606 Willits, David 13 s w pt 16 t h
195 607 Willits, Philip 13 s w 16 f
196 608 Wilson, David 13 n e 17 f h
197 609 Wilson, Solomon 13 s w 17 f h
198 610 Whitefield, Joseph 14 s e pt 17 f h
199 611 Wood, Thomas Jr, 14 w 18 f h
200 612 Yates, William 10 s 20 f h
201 613 Yates, James 11 n e pt 17 f
202 614 Yates, Jarvis 11 w 19 f
203 615 Young, Matthew 12 n 15 f h
204 616 Young, William 12 s 15 f h
205 617 Yager, Lewis 11 s pt 23 f h
206 618 Young, David 14 w 21 e 13 f h

Revised
(Signed) S. J. Jones.
By Judge Brant.

POLLING SUB-DIVISION NO. 5.

| | | | | | | |
|----|---|-----|---|-----|--|-----|
| 1 | 4 Anisebrook, Geo. 6 n pt 16 f h | 61 | 297 Howe, Jonah 7 s w 1/2 18 f h | 123 | 534 Rounds, James 7 e o c pt 18 t h | 101 |
| 2 | 9 Anson, Thos. 7 e 1/2 15 f h | 62 | 288 Henderson, Jacob R 6 n pt 19 f h | 124 | 535 Read, Henry 7 w 1/2 15 f h | 109 |
| 3 | 2 Avey, George N 8 s w pt 22 t h | 63 | 289 Hamner, John, jr. 7 pt n w cor 24 f h | 125 | 536 Read, James Ira 6 n 1/2 18 f h | 17 |
| 4 | 4 Allen, George N 8 n 1/2 21 t h | 64 | 290 Howe, James 7 s 1/2 19 f h | 126 | 537 Rixon, James 6 e 1/2 23 f h | 18 |
| 5 | 5 Allen, James O 8 n 1/2 21 f h | 65 | 33 Hall, James H 9 s e cor n 1/2 13 f | 127 | 538 Rixon, William 6 w 1/2 23 f h | 19 |
| 6 | 6 Allen, Charles R 8 s 1/2 21 t | 66 | 57 Hanmer, John D 8 n pt 24 f h | 128 | 540 Radford, Richard 7 s 1/2 21 t h | 20 |
| 7 | 8 Adams, Oliver 9 s e pt 21 f h | 67 | 58 Hanmer, Hugh C 8 n pt 24 t | 129 | 114 Ryder, Charles 8 n e pt 18 f h | 21 |
| 8 | 12 Allen, Wm R 9 s e pt 20 f | 68 | 59 Hill, John 9 s w pt 24 f h | 130 | 116 Ryder, Jonathan 9 s w pt 18 f h | 22 |
| 9 | 13 Allen, George 8 9 s e pt 20 f | 69 | 63 Hawk, Gabriel 9 s e pt 21 f h | 131 | 117 Ryder, Henry 8 e 1/2 13 f | 23 |
| 10 | 14 Brown, Arthur 9 s e pt 18 f h | 70 | 66 Hawk, Jno, sr 9 s e pt & s 1/2 13 f h | 132 | 118 Rambo William H 8 n e cor 14 t h | 24 |
| 11 | 15 Bennett, Thomas 9 e c pt 13 t h | 71 | 67 Henry, George C 9 s e pt 20 t | 133 | 119 Rambo, Steyhen 8 n e cor 14 f h | 25 |
| 12 | 17 Bennett, Wm C 9 e 1/2 15 t | 72 | 68 Henry, Isaac B 9 s e pt 20 f | 134 | 152 Ricard, John 8 n 1/2 20 f | 26 |
| 13 | 18 Bennett, Wm D 9 e 1/2 15 f h | 73 | 69 Hall, Thomas 7 s 1/2 e 1/2 14 t | 135 | 282 Sovereign, L G 6 n e 1/2 17 f | 27 |
| 14 | 20 Boyd, Joseph 9 s pt 16 f h | 74 | 315 Johnson, Peter 6 n 1/2 20 f h | 136 | 581 Stephenson, F H 6 n pt 16 t | 28 |
| 15 | 21 Brinn, John 9 s pt 17 f h | 75 | 584 Jones, Thomas L 7 e c pt 19 f | 137 | 592 Smith, John A 7 e 1/2 s w 1/2 14 f | 29 |
| 16 | 23 Blair, Wm 8 n 1/2 23 f h | 76 | 72 Jones, Isaac, 9 n pt 17 f h | 138 | 607 Secord, Thomas 7 w 1/2 18 f h | 30 |
| 17 | 107 Bennett, Wm H 9 n 1/2 13 f | 77 | 334 Kneak, Evan 6 n pt 16 t h | 139 | 608 Secord, James 7 e 1/2 19 f h | 31 |
| 18 | 66 Chrysler, George 7 w 1/2 of e 1/2 14 t | 78 | 335 Kneak, Edmund 6 n pt 16 f h | 140 | 609 Stevenson, John 6 o 1/2 22 f h | 32 |
| 19 | 67 Chrysler, James 7 w 1/2 of e 1/2 14 f | 79 | 73 Kelly, Philip 9 all 23 f h | 141 | 610 Sherman, Henry 7 n 1/2 21 t h | 33 |
| 20 | 68 Cope, George 7 pt s e 1/2 13 t h | 80 | 74 Kelly, Albert E 8 n 1/2 18 t | 142 | 121 Schooley, Asahian 9 s e pt 24 f h | 34 |
| 21 | 72 Currie, Cornelius 7 No 8 22 & 23 f h | 81 | 349 Lester, John N 9 n w 1/2 16 t | 143 | 123 Secord, James C Esq 8 s 1/2 20 f h | 35 |
| 22 | 95 Carder, John 7 n w 1/2 22 f h | 82 | 850 Lester, Henry 9 n w 1/2 16 f | 144 | 124 Sims, Alexander 9 n e 1/2 21 t | 36 |
| 23 | 96 Canninger, Hira 7 c pt 24 t h | 83 | 582 Lewis, Wm 6 n pt 16 f | 145 | 125 Sims, Robert 9 n w 1/2 20 f h | 37 |
| 24 | 111 Carter, Samuel 6 e pt 18 f h | 84 | 76 Lount, Gabriel 9 s e pt 24 f h | 146 | 126 Siple, Solomon 9 s e pt 24 f h | 38 |
| 25 | 112 Carter, James 6 s pt 15 f h | 85 | 79 Lawrason, Purvis 9 s e pt 24 t h | 147 | 131 Secord, Alex 8 s 1/2 18 t h | 39 |
| 26 | 113 Costen John 6 s 1/2 24 f | 86 | 405 Mudge, Richard C 7 n 1/2 e 1/2 14 f | 148 | 182 Secord, Solomon 8 s 1/2 18 f | 40 |
| 27 | 114 Chant, John 6 s 1/2 17 f | 87 | 428 Milmine, John 6 e pt w 1/2 13 f h | 149 | 188 Stephenson, James M 8 s e pt 19 f h | 41 |
| 28 | 117 Cokeley, Wesley 7 s 1/2 13 f h | 88 | 444 Molins, Thomas, jr 6 n 1/2 24 t h | 150 | 142 Secord, David 9 s e cor 20 f h | 42 |
| 29 | 118 Clement, John 7 s w 1/2 20 f h | 89 | 445 Molins, Thomas, sr 6 n 1/2 24 f | 151 | 143 Swears, Benjamin 8 n w 1/2 15 f h | 43 |
| 30 | 119 Clement, Wm 7 s e 1/2 20 f h | 90 | 446 Marshall, George 6 s w 1/2 20 t h | 152 | 146 Thompson, Wm 9 s 1/2 n e 1/2 14 f h | 44 |
| 31 | 121 Cokeley, Timothy 7 w 1/2 16 f h | 91 | 450 Muirhead, Wm 6 n pt 16 f h | 153 | 147 Taylor, William 8 n e 1/2 19 f h | 45 |
| 32 | 25 Casner, Albert 9 n pt 24 t h | 92 | 542 Morgan, James 7 pt 21 & 22 f | 154 | 148 Underhill, John 9 s e pt 22 f h | 46 |
| 33 | 26 Casner, Wm 9 n pt 24 f | 93 | 89 Muir, John T 8 s e 1/2 22 f h | 155 | 657 Vanderlip, James 6 n w cor 16 t h | 47 |
| 34 | 27 Clyne Wm 9 s e pt 24 f h | 94 | 93 Mason, Wm B 9 s pt 22 f h | 156 | 658 Vanderlip, Charles 6 n w cor 16 t h | 48 |
| 35 | 58 Casner, Aaron 8 s pt 24 t h | 95 | 94 Menton, Dennis 9 e c pt 19 f h | 157 | 69 Wilson, Foster 7 pt s e 1/2 13 f | 49 |
| 36 | 30 Clement, James 9 s e cor 22 f h | 96 | 95 Menton, Patrick 9 e c pt 19 f h | 158 | 677 Wooden, William H 8 n e 1/2 15 t | 50 |
| 37 | 31 Coon, Wm S 9 s w pt 18 f h | 97 | 96 Minchin, Charles 9 e c pt 18 t h | 159 | 711 Weaver, Lewis A 6 n pt w 1/2 13 f h | 51 |
| 38 | 34 Crysler, James J 9 e c pt 18 f h | 98 | 98 Marshall, Wm 8 s e pt 14 f | 160 | 715 Wedge, J 1 w c pt 7 e c pt 12 18 f h | 52 |
| 39 | 40 Creighton, Wm 9 c pt 18 f h | 99 | 100 Mehan, William 8 s e pt 19 f h | 161 | 716 Wallace, Alex 6 n pt s 1/2 24 f h | 53 |
| 40 | 46 Crooker, John K 9 s w pt 15 f h | 100 | 101 Murray, John 8 s e 1/2 & n w 1/2 19 t | 162 | 717 Wilson, Thomas 7 n w 1/2 23 f h | 54 |
| 41 | 187 Denby, Joseph 9 n w 1/2 14 f | 101 | 102 Murray, Thos 8 s e 1/2 & n w 1/2 19 f h | 163 | 718 Wallace, John 7 n w 1/2 20 f h | 55 |
| 42 | 188 Denby, John 9 n w 1/2 14 f | 102 | 103 Miles, Wm 9 e 1/2 18 t | 164 | 80 Wand, Henry 9 s e pt 24 f | 56 |
| 43 | 157 Dutcher, Thomas H 8 s w 1/2 15 f | 103 | 283 McCurtis, David 6 s w pt 16 f | 165 | 150 Wills, John 8 n 1/2 20 t h | 57 |
| 44 | 158 Dean, John 7 w 1/2 17 f h | 104 | 438 McDonald, Archibald 6 s pt 15 f h | 166 | 151 Wills, Thomas 8 n 1/2 20 t | 58 |
| 45 | 541 Doran, Wm 7 s 1/2 21 f | 105 | 441 McIntyre, Malcolm, jr 6 n w 1/2 21 f h | 167 | 154 Zimmerman, Jas A 9 s w pt 21 t h | 59 |
| 46 | 3 Doran, John 8 s w pt 22 f | 106 | 442 McIntyre, Malcolm, sr 6 w 1/2 22 f h | 168 | 609 Sherman, John 5 pt 17 f h | 60 |
| 47 | 49 Dougharty, James 9 e c pt 16 f h | 107 | 443 McIntyre, Alexander 6 n o 1/2 21 f h | | | 61 |
| 48 | 50 Dunn, Jacob 9 e c pt 16 f h | 108 | 88 McDowell, James 8 w e pt 24 f h | | | 62 |
| 49 | 52 Elliott, Wm 8 all 17 f h | 109 | 90 McClellan, John 9 n w 1/2 22 f h | | | 63 |
| 50 | 206 Flewelling, Isaac 6 s w part 18 f | 110 | 97 McWilliams, Aaron 9 e c pt 18 f | | | 64 |
| 51 | 207 Force, Henry 6 w pt 21 f h | 111 | 115 Nellis, Wm. G 8 s e cor 15 f | | | 65 |
| 52 | 208 Force, Vanransler 6 e pt s 1/2 21 f h | 112 | 465 Oliver, James 7 e c pt 18 f h | | | 66 |
| 53 | 24 Faywell, Richard 8 n 1/2 23 f | 113 | 466 Osmund, Samuel 7 u pt 24 f h | | | 67 |
| 54 | 53 Force, Wm H 9 n e 1/2 22 t h | 114 | 106 Oles, John W 9 s e pt 24 f h | | | 68 |
| 55 | 54 Force, James D 9 n e 1/2 22 f h | 115 | 107 Owens, Richard 9 n 1/2 13 t h | | | 69 |
| 56 | 56 Force, Henry 9 n e 1/2 20 f h | 116 | 493 Polly, Geo. sr 6 s 1/2 18 f h | | | 70 |
| 57 | 10 Groom, Thos 7 e 1/2 15 f | 117 | 404 Polly, Geo jr 6 s 1/2 18 f h | | | 71 |
| 58 | 215 Gamage, Thomas 6 s w 1/2 16 f | 118 | 495 Pringle, Joseph B D 7 u e 1/2 22 f h | | | 72 |
| 59 | 219 Giles, Frederick 7 e 1/2 17 f h | 119 | 496 Poole, Wm 7 4, 5 & 6 23 & 24 f h | | | 73 |
| 60 | 281 Hurd, Wm 6 n e 1/2 17 t h | 120 | 110 Pool, Aaron 9 s e pt 24 t h | | | 74 |
| | | 121 | 111 Poole, George A 9 s e pt 24 f | | | 75 |
| | | 122 | 112 Quigg, Daniel 9 s pt 24 f h | | | 76 |

POLLING SUB-DIVISION NO. 6.

| | | | |
|----|---|----|-----|
| 1 | 3 Allan, Chas H 2 s e 1/2 22 f h | 63 | 288 |
| 2 | 5 Arnold, Hayden E 5 s pt 17 t h | 64 | 700 |
| 3 | 8 Armstrong, Adam 5 n 1/2 23 f h | 65 | 308 |
| 4 | 40 Buskard, Alfred 1 e pt 18 t h | 66 | 321 |
| 5 | 41 Buskard, Charles 1 e pt 18 t h | 67 | 322 |
| 6 | 48 Barker, John P 1 n e 1/2 17 f h | 68 | 323 |
| 7 | 44 Brooks, Robt 2 w 1/2 19 f h | 69 | 325 |
| 8 | 50 Bastedo, Thomas B G 2 e 1/2 13 f h | 70 | 326 |
| 9 | 55 Brown, Henry 5 n pt w 1/2 18 t h | 71 | 327 |
| 10 | 57 Burns, James, jr 3 all 18 t h | 72 | 328 |
| 11 | 58 Burns, James, Esq 3 all 18 f h | 73 | 329 |
| 12 | 60 Baskerville, Wm R 3 s e pt 24 f h | 74 | 330 |
| 13 | 61 Baskerville, Wm, sr 3 s w cor 24 f h | 75 | 331 |
| 14 | 100 Cain, John 1 pt n e 1/2 19 t h | 76 | 332 |

I, Alonzo Foster, Clerk of the Municipality of the Township of Burford appearing by the assessment rolls of the said Municipality entitled to vote and that a copy thereof was first posted in the Clerk's office on the 8th of the said list, and if any omissions or other errors are perceived therein, corrected according to law.

Burford, June, 1874

Alonzo Foster
Revised
(Signed) S. J. Jones

| | | | | | |
|-------------------|---------------------------------------|-----|---|-----|--|
| cept 18 th | 101 Cain, James 1 pt n e 19 fh | 77 | 383 Kennedy, Wm 3 e 22 fh | 138 | 523 Radliff, Charles 1 s w pt 15 fh |
| 15 fh | 109 Crittenden, Edward 2 s 20 th | 78 | 335 Kelly, Adam 5 w c pt 18 fh | 140 | 525 Reace, Daniel 4 s w cor 14 fh |
| 18 fh | 111 Carter, Samuel 5 s w 18 f | 79 | 59 Lockhart, John 3 all 18 th | 141 | 526 Rains, Robert 3 s pt 16 fh |
| 23 fh | 113 Costan, John 5 s w 16 fh | 80 | 351 Landou, Wm H 1 pt n e 14 o | 142 | 528 Rider, Samuel 3 n w 22 fh |
| 23 fh | 114 Chant, John 5 s pt 17 fh | 81 | 353 Laird, Philip 1 n w 23 fh | 143 | 529 Russell, William 3 n w 20 fh |
| 21 th | 115 Costan, Thos 5 s pt 17 fh | 82 | 354 Luister, John 1 n w 24 th | 144 | 530 Russell, George 3 e 20 th |
| 13 fh | 116 Cawley, Samuel 5 s 24 fh | 83 | 356 Lewis, James 1 s 24 fh | 145 | 531 Russell, David 3 e 20 fh |
| 9 s w pt 13 fh | 120 Coolmane, John 3 n pt 17 fh | 84 | 357 Lewis, Edmund 2 s pt 24 f | 146 | 532 Richardson, John 4 s 21 fh |
| 13 f | 352 Charles, Lewis 1 pt n o 14 f | 85 | 358 Lockhart, John 2 e 21 th | 147 | 533 Rich, Richard 5 s 23 fh |
| 8 n e cor 11 th | 6 Doran, Delphael 5 s pt 17 t | 86 | 359 Lockhart, Gregston 2 e 21 fh | 148 | 543 Rouse, Charles 2 n 18 fh |
| n e cor 14 fh | 150 Davis, Daniel 3 s w pt 16 fh | 87 | 362 Lawrence, Jacob 5 n w pt 16 fh | 149 | 521 Shaw, Thomas 2 e c pt 19 f |
| 20 f | 151 Doran, John 3 s 16 fh | 88 | 363 Lawrence, Daniel 3 4 pt s w 15 fh | 150 | 568 Slattery, Patrick 2 s 18 th |
| n o 17 f | 152 Doran, Peter 4 n 16 fh | 89 | 364 Lawrence, James B 4 s e pt w 15 fh | 151 | 569 Slattery, John 2 s 18 f |
| n pt 16 t | 153 Davis, Augustus 3 e pt 14 fh | 90 | 365 London, Wm 4 e pt 15 th | 152 | 570 Sturgess, Daniel 2 s 18 fh |
| 1 s w 14 f | 156 Doran, Wm 5 s pt 17 fh | 91 | 366 London, Joseph 4 e pt 15 fh | 153 | 571 Sharp, Richard 1 s e 19 fh |
| 18 fh | 157 Dutcher, Thos II 4 s pt 21 fh | 92 | 367 London, James 3 s w 14 fh | 154 | 572 Shoemaker, Augustus 4 s pt 17 t h |
| 19 fh | 172 Everett, James 1 w pt 20 fh | 93 | 368 Loudon, Thomas 2 pt e 15 th | 156 | 575 Stewart, Thomas 4 s 18 fh |
| 22 fh | 173 Elliot, John 1 e 22 fh | 94 | 370 Lawrason, John 5 n 20 th | 157 | 578 Summerville, James 4 w pt 20 t h |
| 21 th | 369 Eland, Joseph 2 w 14 f | 95 | 371 Lawrason, Titus 5 s 20 fh | 158 | 580 Stephenson, Richard 5 s pt 18 fh |
| 9 s e pt 24 fh | 194 Ferguson, Alex 1 pt n w 22 fh | 96 | 56 Manning, James 5 n pt w 18 f | 159 | 581 Stephenson, F H 5 s pt 17 fh |
| Eq 8 s 20 fh | 106 Fredenburgh, Havelock 1 n e 24 fh | 97 | 154 Moore, Samuel 3 e pt 14 fh | 160 | 582 Stitt, James, jr., 1 n w 14 th |
| n e 21 t | 367 Fawcett, Robt 1 s 18 fh | 98 | 391 Murshel, Thomas 1 n w 17 e h. | 161 | 589 Stitt, James, sr., 1 n w 14 fh |
| w 20 fh | 197 Force, Noah 3 n e pt 18 fh | 99 | 416 Muir, Thomas 2 n w 21 fh | 162 | 590 Selby, George 1 n 18 th |
| e pt 24 fh | 198 Force, Thos L 4 n pt 18 th | 100 | 419 Muma, Neison 2 w 18 fh | 163 | 591 Smith, James 1 w 19 fh |
| 18 th | 199 Force, Wm T 2 s pt 14 f | 101 | 421 Male, William 5 s pt n 15 fh | 164 | 597 Singer, Abraham 4 s pt e 15 th |
| s 18 f | 204 Fish, John 4 e part 20 fh | 102 | 423 Maghee, John 4 n e 17 th | 165 | 599 Siple, Daniel 2 w 16 fh |
| M 8 s e pt 13 fh | 205 Flewelling, George, 5 n pt 18 fh | 103 | 424 Muir, Robert L 3 n w 24 o | 166 | 600 Swears, Jonathan 3 s e cor 18 fh |
| e cor 20 fh | 206 Flewelling, Isaac, 5 n pt 18 fh | 104 | 426 Miller, Joshua S 3 w 19 th | 167 | 601 Soper, Josiah 5 s pt 17 fh |
| 8 n w 15 fh | 484 Force, James 3 s pt 14 f | 105 | 427 Miller, William S 3 w 19 fh | 168 | 602 Sherman, John 5 s pt 17 fh |
| s 1 n e 14 fh | 579 Farrington, Adam 4 w pt 20 f | 106 | 431 Muir, John 4 w 22 fh | 169 | 603 Shoemaker, Lewis, 5 s pt w 17 f h |
| n e 19 fh | 221 Gow, Alex 3 s e cor 13 th | 107 | 482 Muir, Allan, 4 e 22 fh | 170 | 604 Smith, Arthur 5 n 22 fh |
| e pt 22 fh | 646 Grandine, Philip 5 n 19 f | 108 | 486 Muir, Thomas, sr., 4 n pt 21 fh | 171 | 606 Shoemaker, Charles 5 pt s 19 th |
| 3 n w cor 16 th | 261 Henderson, Alex 1 n e pt 13 th | 109 | 439 Mills, William 5 n 21 fh | 172 | 455 Turner, James 5 n 13 f |
| 6 n w cor 16 th | 262 Hall, John 1 n 16 th | 110 | 448 Mason, William T 2 s e 23 th | 173 | 635 Triniman, William 2 s 24 th |
| t s e 18 f | 264 Hurley, Michael 2 n w 23 fh | 111 | 697 Mitchell, John 1 n e pt 14 f | 174 | 636 Triniman, George 2 s 24 fh |
| H 8 n e 15 t | 265 Haney, Wm 1 pt n e 15 fh | 112 | 369 McKenzie, Valentine 2 pt e 15 f | 175 | 637 Tougher, Robert 2 n e 23 fh |
| 3 n pt w 13 fh | 267 Haney, John 1 pt w 15 f | 113 | 417 McKee, Samuel 2 w 17 th | 176 | 638 Turnbull, William 2 n 20 fh |
| 7 e c pt 12 13 fh | 269 Hopkins, John 1 s e 17 fh | 114 | 418 McKee, William 2 w 17 fh | 177 | 642 Thomas, Philip 3 w 21 fh |
| pt s 24 fh | 270 Howitt, Gibbens B 2 n e pt 17 fh | 115 | 423 McIrvine, Alexander 2 s w 22 fh | 178 | 643 Thomas, Robert 3 e 21 fh |
| n w 23 fh | 271 Howell, Geo M 4 s 13 fh | 116 | 428 McConnell, Michael 3 s w 22 th | 179 | 645 Turner, Charles 5 n 17 th |
| w 20 fh | 274 Hilborn, John A 5 s e pt 18 fh | 117 | 438 McConnell, John 3 s w 22 fh | 180 | 647 Trimble, Charles 4 n pt 24 th |
| pt 24 f | Henderson, Alex 4 n pt 14 fh | 118 | 452 Nelms, Henry 2 n 24 o | 181 | 649 Taylor, Henry, Esq., 5 s 21 fh |
| 20 th | 275 Hobson, Chas 3 n 23 fh | 119 | 453 Nelms, William 2 n 24 f | 182 | 425 Army, Arteus 3 n w 24 f |
| 1 20 t | 276 Harley, James 3 n e 24 fh | 120 | 454 Noyce, Abraham 5 n 13 th | 183 | 461 Vaux, Outlibert 1 s 16 f |
| 9 s w pt 21 th | 277 Haney, Leonard M 3 n 15 fh | 121 | 460 Osborne, William 1 s 16 th | 184 | 660 Virtue, Matthew, jr., 4 n 21 fh |
| 27 th | 278 Henderson, Joseph 5 s 15 t | 122 | 462 Osser, George 5 e s e 16 fh | 185 | 661 Virtue, Henry 3 s 23 th |
| ION NO. 6. | 279 Henderson, Wm 5 s 15 t | 123 | 463 Oliver, Robert 3 e 19 fh | 186 | 662 Virtue, Matthew, sr., 3 s 23 fh |
| e 22 fh | 280 Henderson, Jas., sr 5 s 15 f | 124 | 464 Overholt, Henry 2 s w 15 fh | 187 | 668 Virtue, John 5 n 24 fh |
| 5 s pt 17 th | 288 Henderson, Jacob R 5 s w cor 19 f | 125 | 110 Petrie, Lemmon 2 s 20 f | 188 | 696 Wood, Hamilton 1 n o pt 14 th |
| 5 n 23 fh | 700 Hamilton, John, 1 n e 23 f | 126 | 449 Poole, George A 2 s e 23 fh | 189 | 698 Whitmore, Charles L 1 pt n e 15 fh |
| e pt 13 th | 308 John, James 2 w 14 th | 127 | 469 Pailing, Edward 3 e pt 18 f | 190 | 699 Ward, Richard 1 n e 23 th |
| e pt 13 th | 321 Kipp, David, jr 1 pt w 13 fh | 128 | 480 Parkinson, Richard 1 e pt 20 fh | 191 | 703 White, William C 3 s 14 th |
| n e 17 fh | 322 Kneal, Edmund, jr 5 s pt 17 fh | 129 | 481 Pickering, Frederick 2 pt n e 15 fh | 192 | 704 White, William 5 s 14 fh |
| 19 fh | 323 Kennedy, Alex 5 s pt 16 fh | 130 | 484 Pitcher, Archibald 3 s pt 14 th | 193 | 705 Warboys, William 5 e pt 16 fh |
| 3 G 2 e 13 fh | 825 Kipp, Alfred A 1 s 21 th | 131 | 485 Peffers, George 3 n 23 fh | 194 | 707 Warboys, David 5 n 16 fh |
| pt w 18 th | 926 Kipp, Mahlon 1 s 21 th | 132 | 486 Parkhill, John 4 n w cor 17 fh | 195 | 712 Weir, Henry, sr., 4 e 19 fh |
| all 18 th | 927 Kipp, Benjamin 1 21 fh | 133 | 488 Potter, John 4 n pt 23 fh | 196 | 713 Weir, Henry V 4 e 19 fh |
| 8 all 18 fh | 928 Kipp, Humilton 1 s e cor 23 fh | 134 | 489 Potter, Mains 4 s w pt 23 fh | 197 | 714 Weir, George 4 w 19 fh |
| 3 s o pt 24 fh | 829 Kipp, Daniel, jr 2 n 22 th | 135 | 490 Potter, Joseph 4 s e pt 23 fh | | |
| r 3 s w cor 24 fh | 830 Kipp, Daniel, sr 2 n 22 fh | 136 | 499 Quirk, William 1 n e cor w 13 fh | | |
| e 19 th | 331 Kempert, Charles, 2 n e pt 15 fh | 137 | 520 Roike, Michael 2 e c pt 19 th | | |
| | 332 Kennedy, John 3 e 23 th | 138 | 522 Radliff, John 1 s w pt 15 fh | | |

Shipp of Burford, certify that the foregoing is a correct list of all persons
entitled to vote at elections for members of the Legislative Assembly ;
on the 8th day of June, 1874. All electors are called upon to examine
received therein, to take immediate proceedings to have the said error cor-

ALONZO FOSTER,
Township Clerk.

