

CANADIAN CONTRACT RECORD

*A Weekly Journal of Engineering, Public Works,
Tenders, Advance Information and Municipal Progress*

This Paper Reaches Every Week the Town and City Clerks, Town and City Engineers, County Clerks and
County Engineers, Leading Civil Engineers and Contractors throughout Canada,
and Purchasers of Municipal Debentures.

VOL. 18.

TORONTO, MONTREAL—AUGUST 14, 1907—WINNIPEG, VANCOUVER

No. 24

THE CANADIAN CONTRACT RECORD

PUBLISHED EVERY WEDNESDAY

As an intermediate Edition of the Canadian
Architect and Builder.

THE C. H. MORTIMER PUBLISHING COMPANY
of Toronto, Limited.

Subscription Price, \$5 per annum, payable
in advance.

United States, \$5.00 per year

CONFEDERATION LIFE BUILDING, TORONTO
Telephone Main 2362.

Branch Office:

Room B34, Board of Trade Building, Montreal.
Telephone Main 2299.

700-701 Union Bank Building, Winnipeg.
Telephone 1274.

Davis Chambers, 613 Hastings St., Vancouver,
B. C. Telephone 2243

Subscribers who may change their address
should give prompt notice of same. In doing so
give both old and new address. Notify the pub-
lishers of any irregularity in delivery of papers.

Classified Index
of Advertisers,
Page 15.



Temiskaming and North- ern Ontario Railway Commission

TENDERS FOR OFFICE, MINING ENGINEER

Sealed tenders, addressed to the undersigned and
endorsed "Tender for Office, Mining Engineer," will
be received up to 5 p. m. on the 28TH DAY OF
AUGUST, 1907, for the erection of an office for Min-
ing Engineer at Cobalt.

Plans and specifications may be seen at the
office of the Commission, 25 Toronto Street, Toronto, and
at the office of the Chief Engineer, North Bay.

A certified cheque for \$400.00 must accompany
each tender.

The successful tenderer must enter promptly into
a contract and furnish security for the amount of
\$1,000.00 for the due completion of same.

Cheques of unsuccessful tenderers will be returned
to them.

The lowest or any tender not necessarily accepted.

A. J. MCGEE,
Secretary-Treasurer.

Toronto, July 22nd, 1907.

Papers inserting this advertisement without
authority will not be paid for same.

FOR SALE

Automatic Stoker with fan and engine complete,
in good running order. Snap. Reason for selling,
compelled to burn shavings. Apply.

A. J. H. ECKARDT,
National Casket Co.,
107 Niagara St., Toronto.

The Royal Institute of British Architects, London.

Examination for Admission as Associate.

An examination for admission as Associate of
the Royal Institute of British Architects, Lon-
don, will be held in Toronto, from the 14TH to
21ST OF NOVEMBER, 1907.

Full particulars and all information regarding
this examination can be had by applying to F.
S. BAKER, Honorary Secretary for Canada,
Traders Bank Building, Toronto.

Notice to Contractors' WATER WORKS PUMPS

Sealed tenders, addressed to Charles Pepper,
Chairman of the Water Works Committee, Ottawa,
Canada, will be received by registered post only at
the office of the City Engineer, up to 5 P.M. TUES-
DAY, AUGUST 27TH, 1907, endorsed "Tender for
Water Works Pumps," for the supply and installa-
tion of two Duplex Water Power Pumps, having a
capacity of 4,000,000 Imperial gallons each per day.
Specifications, forms of tender and full particulars
may be obtained at the City Engineer's office, City
Hall, Ottawa.

The Corporation does not bind itself to accept the
lowest or any tender.

NEWTON J. KER,
City Engineer.

Ottawa, August 3, 1907.

EXTENSION OF TIME Town of Campbellford

POWER DEVELOPMENT At Middle Falls ON THE TRENT RIVER

Sealed tenders are required for Rock Cutting, Con-
crete Work, Turbine Wheels, Generators and about
2 1/2 miles of Transmission Line. Plans and specifi-
cations may be seen after August 15th, at the office
of the Engineer, JOHN S. FIELDING, C.E.,
CONSULTING ENGINEER, 15 Toronto Street,
Room 15, Toronto. Tenders to be in by 12 o'clock
noon, SEPTEMBER 5TH, addressed to W. J.
Doxsee, Esq., Mayor of Campbellford.

The lowest or any tender not necessarily accepted.

E. C. WEST,
Clerk of the Corporation of the
Town of Campbellford.

WANTED

Re-engagement as Clerk of Works or Quantity
Surveyor.

W. FRASER, 144 Grace Street, Toronto.

SCHOOL DEBENTURES FOR SALE

TOWN OF NORTH BATTLEFORD

Seven Debentures of \$5,000 each, repayable in 30
years, in 30 equal aggregate amounts of principal
and interest at 5% per annum. Payable at the
Canadian Bank of Commerce, North Battleford.

For further particulars apply

E. W. DREW,
Secretary-Treasurer North Battleford.

Tender for Pipe Drain

To be received by the undersigned up to SATUR-
DAY, 24TH AUGUST, 1907, to 6 P.M., for laying
about 1,674 feet of 12-inch pipe drain in Davisville
Avenue, Town North Toronto, County York.
Specifications, plan, etc., can be examined at office
of the undersigned and at office of Peter S. Gibson,
C.E. and O.L.S., Town Engineer, at Willowdale.

Any tender not necessarily accepted.

W. J. DOUGLAS, Town Clerk.

Eglinton P.O.

Plans for New Calgary General Hospital

Notice to Architects

The time for receipt of plans has been ex-
tended to 12 o'clock noon on MONDAY 28TH
SEPTEMBER, 1907.

(Signed) H. R. DUDLEY SMITH,
Hon. Secretary-Treasurer.

CITY OF FREDERICTON DEBENTURES

Sealed tenders, marked "Tender for Fredericton
Debentures," will be received by the undersigned
until AUGUST 25TH, 1907, for City of Fredericton
Water Debentures, running for forty years from
August 1st, 1907, issued in sums of \$500.00 each,
bearing interest at 4 per cent payable half yearly.
Tenders to state the price and amount each applicant
will take.

The City reserves the right to reject any or all
bids or to accept any bid.

For further particulars apply to

I. R. GOLDING, City Treasurer,
Fredericton, N. B.

Nearly every building in the town
of Essex, Ont., 35 miles from
Detroit, is reported to have been
recently destroyed by the explosion
of a car of dynamite.

Montreal maintains a steady
building record. July building
permits totalled \$843,503, which is
only a few thousands below the
June mark. The total for new
buildings under construction in the
current year is \$5,351,646.

CONTRACTS OPEN.

MERRICKVILLE, ONT.—A \$3,000 drill hall will shortly be built here.

VERMILION, ALTA.—A new \$25,000 school building is being erected here.

WINDSOR, ONT.—The new Episcopal church of the Ascension is in course of construction.

HIGH RIVER, ALTA.—The City Council are taking tenders this week for the erection of a Town Hall.

WELLAND, ONT.—The Methodist church on Muir street, recently destroyed by fire, will be rebuilt at once.

NIVERVILLE, MAN.—Tenders are being taken this week by A. Whittick for the erection of a church.

AMHERSTBERG, ONT.—A by-law has been carried for raising \$2,500 by debentures for waterworks improvement.

BERLIN, ONT.—The corner stone has just been laid of an addition to St. Jerome's College, which will cost \$40,000.

ST. FELICIEN, QUE.—On August 26th the ratepayers will vote on a by-law for the installation of a waterworks system.

INGERSOLL, ONT.—Mayor Cole-ridge has been authorized to apply to Andrew Carnegie for \$10,000 towards a library.

ISLINGTON, ONT.—The Etobicoke Council have passed a by-law to raise \$18,000 for the erection of a school at new Toronto.

MONCTON, N. B.—Tenders are being taken this week for the construction of premises for the Bank of Montreal in this city.

CARLYLE, SASK.—Thomas Jarrott, Secretary, will take tenders up to August 25th for \$3,500 per cent 20 year school district debentures.

HUNTSVILLE, ONT.—Efforts are being made to have a new steel bridge erected in place of the wooden bridge which recently collapsed.

AYLMER, ONT.—A by-law in connection with the local sewerage scheme has had two readings and indications point to a speedy realization.

LONDON, ONT.—The Provincial Board of Health have approved of plans for the Isolation Hospital and their adoption is now almost certain.

FORT WILLIAM, ONT.—The first building permit to be issued this month was in favor of James Murphy for a \$15,000 block on Simpson street.

WAYBURN, SASK.—Votes of the ratepayers will be taken on August 15th on a by-law for providing \$50,000 for construction of waterworks system.

SUDBURY, ONT.—Application has been made to the Municipal Board for the approval of a by-law to raise \$10,000 for a waterworks system and sewage.

BRANTFORD, ONT.—The Canada Machine Telephone Co. will shortly have an automatic system in operation here. They have purchased a site for an \$8,000 office.

SIMCOE, ONT.—August 16th is the last day for sending in tenders to the Department of Public Works, Ottawa, for the construction of a public building here.

MASSEY, ONT.—A by-law to provide \$10,000 for the extension of the waterworks system has been approved of by the Ontario Railway and Municipal Board.

GALETTA, ONT.—As soon as the development of the Madawaska water power is sufficiently advanced, electric machinery and a water wheel will be installed.

FREDERICTON, N. B.—A union depot will likely be erected here before very long, provided the railway authorities can come to the necessary understanding.

MEDICINE HAT, ALTA.—A by-law providing \$10,000 for building an isolation hospital and granting \$5,000 to the new wing of the General hospital has been passed.

PRINCE ALBERT, SASK.—The Victoria Hospital authorities have decided to build an addition to their premises, which will be larger than the present building.

YORKTON, SASK.—Tenders will be received by F. J. Robinson, Deputy Commissioner of Public Works, Regina, up to August 17th for the work of reheating the Court House.

HAILEYBURY, ONT.—Five acres of land have been purchased here upon which will be built a large foundry and machine shop. A \$10,000 structure will shortly be commenced.

QUEBEC, QUE.—W. B. Baillairge, City Engineer, is this week taking tenders for the erection of a new fire station. Plans with the architect, G. E. Tanguay, and with Mr. Baillairge.

STRATHCONA, ALTA.—Recent building permits include: Trustees Holy Trinity church, \$21,513; H. Crawford, dwelling, corner Duggan street and Macdonald avenue, \$5,000.

DE BERT, N. S.—It is reported that several capitalists from abroad have secured the option on some thousands of acres of timber lands with a view to establishing a pulp mill here.

BROCKVILLE, ONT.—Votes of the ratepayers will be taken on August 26th on a by-law for the issue of \$9,000 of debentures to provide for the renewal and repair of certain bridges in the town.

CALCARY, ALTA.—The time for receiving plans for the new General hospital has been extended to the 2nd of September.—Plans for an up-to-date street railway service have been completed.

WOLSELEY, SASK.—F. J. Robinson, Deputy Commissioner of Public Works, Regina, invites tenders until August 17th for reheating Court House. Specifications on application to Mr. Robinson.

ST. CATHARINES, ONT.—The Whitman & Barnes Manufacturing Company have agreed to spend \$40,000 in machinery and factory improvements in return for reduced assessment granted by Council.

NEEPAWA, MAN.—Fred Gelinas, Department of Public Works, Ottawa, wants tenders up to August 27th for the construction of a public building. Plans on application to the Postmaster or at the Department.

LETHBRIDGE, ALTA.—George Whalen, Secretary-Treasurer, Lethbridge Woollen Co. Ltd., is taking tenders this week for the purchase of \$40,000 5 per cent 20 year debentures in the above company.

SARNIA, ONT.—It is now certain that the C. P. R. is coming to Sarnia. The line will be first extended from London and eventually to Stratford, thus providing a fast line from central and eastern Ontario to the west.

NEWMARKET, ONT.—A by-law for raising \$2,500 by debentures for the purchase of meters, and for the extension and improvement of the electric lighting system, has met with the approval of the Ontario Railway and Municipal Board.

OWEN SOUND, ONT.—It is reported that the Ben Allen Portland Cement Company will erect, either here or at Ben Allen, 4½ miles distant, a

large plant, which will include mills having a minimum capacity of 600 barrels daily.

PORT ARTHUR, ONT.—Neil McDougall, Indian Agent, wants tenders up to August 15th for the erection of a school house and residence at Squaw Bay and the Mountain schools, Fort William Indian Reserve. Plans at Agent's office.

STRATFORD, ONT.—Recent building permits include Blayer & Ellson, brick veneer residence, Water street, \$2,700; Pounder Bros., two frame residence, Nile street, \$2,500; Stratford Construction Co., brick veneer residence, Norman street, \$2,200.

DALHOUSIE, N. B.—By a large majority the ratepayers have decided to accept the proposals of the Caspacia Trading Co. who intend to establish lumber mills and dry kilns here. The proposed plant will cost \$1,000,000 and the structure will be entirely of concrete.

REGINA, SASK.—This city has been selected by a large American concern engaged in the manufacture of agricultural implements and machinery as their western headquarters. Captain Blenkorn, the company's representative, is at present negotiating for a building.

SHERBROOKE, QUE.—Tenders are invited up to August 29th by Fred Gelinas, of the Department of Public Works, Ottawa, for the construction of a drill hall in this city. Specifications at Sherbrooke Post Office, from the caretaker, and at offices of the Department.

BARRIE, ONT.—Local churches are undergoing extensive improvements. A new building is being erected by the Elizabeth street Methodists at a cost of \$18,000. An extension is being added by the Collier street Methodists, costing \$12,000, and Trinity church is being renovated.

MOOSE JAW, SASK.—A second reading has been given a by-law to borrow \$125,000 for waterworks and sewer extensions.—John D. Simpson wants tenders up to August 19th for construction of some 10,000 feet of sewers and water mains. Plans at City Engineer's office.

CUMBERLAND, B. C.—Fred Gelinas, Department of Public Works, Ottawa, invites tenders up to August 19th for the construction of a public building here. Plans and specifications on application to the Postmaster at Cumberland or at the offices of the Department.

VICTORIA, B. C.—The School Board have instructed Ridgeway Wilson, architect, to prepare plans for the erection of a six-roomed school building at Victoria West.—A recently adopted report of the Streets & Sewers Committee provides among other things for the laying of over \$27,000 of new sewers.

PENETANGUISHENE, ONT.—W. H. Hewson, Town Clerk, will receive tenders until August 20th for the following debentures: \$23,000 High school debentures, 4½ per cent, 30 years; \$15,000 Public school debentures, 4½ per cent, 30 years; \$2,150 Permanent Improvement debentures, 4 per cent, 20 years.

ST. JOHN, N. B.—A new \$60,000 building for the Y.M.C.A. is in course of construction.—The C.P.R. have notified the Board of Works that they expect the city to build the grain conveyor at the new wharf.—Francis Kerr has applied to the wharf for the widening of the wharf at Sydney slip. Estimated cost \$2,200 to \$2,500.

ST. PETER'S BAY, KINGS COUNTY, P.E.I.—Fred Gelinas, Secretary Department of Public Works, Ottawa, wants tenders up to August 27th

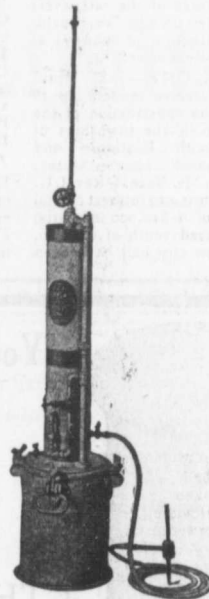
LIGHTS

— FOR —

Contractors
Railroads
Quarries
Mines
Shipyards
Freight Yards
Wharves, Etc.



Buckeye Kerosene Light



Holland Acetylene Light

MUSSENS LIMITED

Railway, Mining, Municipal and Contractors' Supplies

MONTREAL

Branch Offices: QUEBEC, TORONTO, WINNIPEG, VANCOUVER

1907
 mi ls
 f 600
 Neil
 ends
 n of a
 Squaw
 Fort
 ns at
 build-
 llison,
 street,
 resid-
 d Conde-
 nce,
 large
 ded to
 apedia
 h lum-
 ie pro-
 nd the
 te.
 y has
 n co-
 ure of
 hinery
 Captain
 stative,
 ding,
 enders
 y Fred
 Public
 on of a
 cations
 ie care-
 rtment.
 hes are
 ts. A
 by the
 cost of
 added
 costing
 being
 second
 law to
 ks and
 impson
 for con-
 sewers
 Engin-
 Fred.
 Works,
 August
 public
 fications
 ister at
 of the
 ol Board
 n, archi-
 ction of
 Victoria
 nt of the
 provides
 g of over
 DNT. —
 ll receive
 e follow-
 h school
) years;
 res, 4 1/4
 rmanent
 er cent.,
 \$60,000
 course of
 notified
 spect the
 or at the
 applied to
 he wharf
 st \$2,200
 KINGS
 nas, Sec-
 Works,
 gust 27th

for the construction of an extension to the breakwater here. Specifications at office of J. B. Hegan, Resident Engineer, Charlottetown, P.E.I., on application to Postmaster at Morrel, P.E.I., and at the Department.

BRANDON, MAN.—J. H. Howden, Minister of Railways, Telephones and Telegraphs, is taking tenders this week for the building of a subway in connection with the Manitoba Government Telephone Systems in this city.—The following building permits have been issued: Hanbury Manufacturing Co., 15th street, \$4,500; Brandon Manufacturing Co., Dennis street, \$2,000.

HAMILTON, ONT.—Henry New, formerly of the Hamilton and Toronto Sewer Pipe Company, has purchased a large tract of land east of the city limits upon which he proposes to establish a brick works and pottery.—The Parks Board and Finance Committee have endorsed the Macallum route through the parks for the Hamilton, Waterloo and Guelph Railway.—The paving of East King street and Main street has been authorised.

CHATHAM, ONT.—The Traders Bank have purchased a site here upon which they intend to erect a fine building next season.—Negotiations are on hand for the construction of a building for James Palmer's steam bakery.—There is also some talk of a gas engine and cream separator manufacturing concern locating here.—Votes of the ratepayers will shortly be taken on a by-law providing for the construction of subways at First avenue and Ross street.

WOODSTOCK, ONT.—J. T. Bean, Maplewood, will receive tenders up to August 14th, for the construction of the Kerr-Lupton drain in the townships of West Zorra, South Easthope and Dwnie. Estimated cost \$4,407. Specifications with Mr. Bean.—Rev. J. G. Taylor is endeavouring to interest capital for the erection of a \$10,000 industrial school for the colored youth of Ontario.—Plans for the new city hall have been

favorably received and a by-law providing for the erection thereof will probably be submitted in January.

EDMONTON, ALTA.—J. S. Ward, President of the Alberta Biscuit Co., was recently in the city arranging preliminaries for the establishment of a factory in Edmonton.—The following building permits have been issued: W. J. Webster, First street, offices and stores, \$24,000, Johnston & Lines, architects; A. J. McKay, Cameron street, dwelling, \$4,000; John McCorkindale, Morris street, dwelling, \$2,500; and W. B. Fullerton, two dwellings on Heimnick street, \$1,800 each.—The plans of the new Parliament buildings have been practically completed and are only awaiting the Premier's sanction.—A prominent manufacturer of Illinois has purchased property in the east end of the city with a view to establishing a large furniture manufacturing plant.

OTTAWA, ONT.—Amongst by-laws recently passed was one for the issue of debentures to the amount of \$60,000 for extensions and improvements to waterworks system.—The City Council have granted the Board of the Collegiate Institute \$270,000 in debentures for the enlargement of their buildings.—A permit has been taken out by the Bank of Ottawa for the erection of a new \$20,000 building on Bank street, St. James. Other permits include: W. J. Campbell, boiler works, Wellington street, \$20,000; W. W. Core, alteration to dwelling, O'Connor street, \$8,000; T. Lawson, blacksmith shop, Wellington street, \$2,000.—Fred Gelinas, Secretary Department of Public Works, invites tenders up to August 21st for alterations and additions to the Royal Observatory. Plans and specifications at offices of Department.

WINNIPEG, MAN.—Fred Gelinas, Department of Public Works, Ottawa, invites tenders up to August 21st for the erection of a guard room building at Fort Osborne. Plans and specifications may be obtained of Joseph Greenfield,

Superintendent of Public Buildings, Winnipeg, and at the offices of the Department, Ottawa.—The Provincial Legislature will likely erect a building suitable for teaching all branches of household science.—A new residence for the accommodation of 200 students, together with a greenhouse, poultry plant and sheep barn, will be erected for the Agricultural College this fall.—M. Peterson, Secretary Board of Control office, wants tenders up to August 16th for the construction of a sewer connection and installation of plumbing to certain properties in the city. Specifications at office of City Engineer.—The projected power plant at Pointe du Bois has produced keen competition, tenders having been received from several European firms.—The Committee have passed plans for new bridge at Lac du Bonnet, estimated cost \$40,000.

MONTREAL, QUE.—Tenders will be taken up to September 6th by George Janin, Superintendent and Chief Engineer of Montreal Waterworks, for the construction of a reinforced concrete conduit about 9 feet in diameter and 29,300 feet long. The work comprises about 250,000 cubic yards of earth excavation, and 44,000 cubic yards of rock excavation, also the supply and construction of the reinforced concrete with moulds and metal for reinforcing. Specifications and further details can be had at the Superintendent's office.—The Water Committee will ask Council for \$28,000 in order to purchase a new set of 450 horse-power boilers and construct installation building at the low level pumping station.—Hon. W. A. Weir, Minister of Public Works, P.Q., invites tenders up to August 22nd for construction of the new jail. Plans at Government offices, 9 St. James street, or at architect's office, 164 St. James street.

VANCOUVER, B. C.—The South Vancouver Council will procure pipes and all necessary material for the installation of a waterworks system throughout their municipality.—Recent building per-



You Cannot Afford to Take Chance

Poor Sewer Pipe is a menace to health and very expensive to replace.

Purchase the best and get it when you want it. Ask for full information at the nearest of our three factories.

THE CANADIAN SEWER PIPE CO.
HAMILTON, ONT. TORONTO, ONT. ST. JOHN'S QUE.



THE CANADIAN STANDARD

STAR

THE CANADIAN PORTLAND CEMENT CO., LIMITED
502 TEMPLE BUILDING, TORONTO
203 BOARD OF TRADE BUILDING MONTREAL

PLUMBERS' AND STEAMFITTERS' SUPPLIES

Iron Pipe 1-8 in. to 12 in. carried in stock

Malleable Fittings Cast Iron Fittings

Lead Traps and Bends

Valves Tools Lead Pipe Pig Lead

PROMPT SHIPMENT

Somerville Limited

TORONTO 59 Richmond St. East

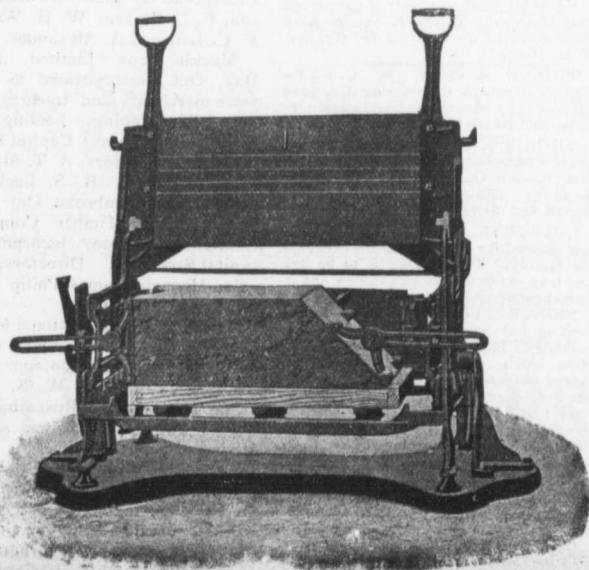
... Speaks For Itself ...

THE MILES CONCRETE BUILDING BLOCK MACHINE

Makes 40 Different Sizes of Stone in Any Design, as well as the Specials, viz.:

Water Table, Gable, Circle, Angle, Chimney, Cornice, Pier Blocks, etc.

Catalogues and Information Cheerfully Furnished.



This Machine makes all blocks face down—"the only practical way"—allowing of a richer and finer facing, producing blocks that are perfect in appearance and impervious to moisture.

Let us tell you how the "Miles" will pay for itself over any other machine in three months' operation.

Manufactured and Sold by
**VINING BROS.
M'fg. Co.**
Niagara Falls. - Can.

Sales Agent for Quebec:
T. A. CHADBURN, 242 St. James Street,
MONTREAL.

907
Win-
part-
egis-
table
ehold
e ac-
ether
and
Agri-
rson,
wants
con-
d in-
oper-
office
power
luced
been
ms.—
is for
nated

s will
eorge
Engi-
r the
crete
r and
prises
exca-
rock-
instruc-
with
Spec-
ie had
— The
cil for
ew set
struct
level
Weir,
invites
struc-
overn-
or at
ect.

South
pipes
install-
ghout
ng per-

mits include:—W. G. Bower, brick residence, \$15,000; remodelling of Vancouver opera house, \$15,000; John MacLeod, frame dwelling, Comox street, \$4,000; Cook & Holmes, dwelling, 13th avenue, \$2,000; Wm. Carle, frame dwelling, 8th avenue, \$2,500; A. J. Paterson, Barclay street, \$3,550; Allan Bros., Beach avenue, \$4,000; S. S. Ferns, Ninth avenue, \$2,000; James Hay, Second avenue, \$2,000.—The new \$40,000 office building of the B. C. Permanent Loan & Saving Co. will shortly be erected. Contractor A. E. Carter has the work in hand.—The residents on Granville street south have petitioned Council for the block paving of their street which will cost \$40,000.—A large saw mill is to be erected on the north shore of English Bay.—The authorities have presented a petition to the Premier for the erection of a joint traffic and railway bridge to connect the North Vancouver District with the city and districts south. Estimated cost \$700,000 to \$1,000,000.—The North American Trading Company of St. Paul have purchased 260 square miles of timber lands on the Coast and Vancouver Island. Within a couple of years six saw mills will be erected.

TORONTO, ONT.—The Civic asphalt plant will shortly be ready for operation and City Engineer Rust has been authorized to advertise for the necessary supply of asphalt.—A large Pittsburg manufacturing concern will in all probability be shortly established in the old Dominion Radiator building, corner Queen and Dufferin streets.—All arrangements have been completed by the trustees of the Annette street Methodist church, Toronto Junction, for the erection of a new \$40,000 building, and tenders will soon be taken.—The Montreal Loan & Building Company, Bloor street and Palmerston avenue, want tenders from all trades for store and pair of houses.—Tenders are wanted at Lunness Farm, Long Branch, for slate roofing, plumbing, plastering and hot water heating.—Plans are being prepared by Chadwick & Bickell for remodelling and improving the Church of the Redeemer Sunday School, corner of Bloor and Avenue road.—Robert Crean Company, Limited, are making extensive alterations to their hat factory on Balmuto street.—Hon. Aylesworth has promised Mayor Coatsworth that the construction of the \$90,000 Island breakwater, and the sea wall in Humber Bay shall be proceeded with at once.—The Mayor invites tenders up to August 27th for constructing and placing two groynes on Lake Ontario. Specifications at City Engineer's office.—H. F. McNaughten, Secretary, Public Works Department, wants tenders up to August 27th for erection of Court House and Registry Office at Sudbury, and up to August 20th for construction of concrete superstructure to wharf at Mimico Asylum. Specifications can be seen at the Department.—The following building permits have been issued: T. Harmon, three attached 2 storey brick dwellings, near Bloor street, on 709, 711 and 713 Euclid avenue, \$6,000; W. W. Hiltz, one pair semi detached 2 storey brick dwellings, near Hogarth avenue, on east side of Broadview avenue, \$6,000; J. H. Charlebois, four attached 2½ storey brick dwellings, near College street, on west side Bathurst street, \$5,000; Deeth & Sons, three attached 2 storey brick dwellings, near College street, on east side of Dufferin street, \$5,000; J. A. Harvey, one pair semi detached 2 storey and attic brick dwellings, near College street, on west side Rusholme road, \$6,000; Gordon Eadie, 2 storey brick dwelling, near Bloor street, on 403 St. Clarens avenue, \$2,500; J. R. Marshall, two detached 2 storey

and attic brick dwellings, near Lowther avenue, on east side Brunswick avenue, \$8,000; W. S. Henderson, 2 storey brick dwelling, near Bloor street, on 316 Margueretta street, \$3,000; John Murray, one pair semi detached 2 storey brick dwellings, near Barton avenue, on west side Clinton street, \$4,000; A. T. Stewart, two pair semi detached 2 storey brick dwellings, near Crawford street, on the north side of Arthur street, \$8,000; Robert Crean Co., 3 storey brick warehouse, near Czar street, on the east side of Balmuto street, \$10,500; Stauntons, Limited, 2 storey brick and steel boiler room, near Belmont street, on 499 Yonge street, \$2,000; J. McKinnon, one pair 2 storey roughcast dwellings, brick fronts, near Emerson avenue, on Armstrong avenue, \$4,000; W. H. Thompson, one pair semi detached 2 storey brick dwellings near Avenue road, on 109-111 Marlborough avenue, \$5,000; Hortop Milling Co., 2 storey galvanized iron storage shed, near Dufferin, on G. T. R. siding, \$2,000; C. Miller, addition to hotel, northwest corner Queen street and St. Patrick Square, \$2,000; F. J. Cummings, one pair of semi detached 2 storey brick dwellings, near Roncesvalles avenue, on 1346 College street, \$4,000; Mr. McIntosh, 3 storey brick dwelling, near Argyle street, on west side Shaw street, \$3,000; J. C. Foxman, 2½ storey brick dwelling, near Victor avenue, on 437 Broadview avenue, \$6,500; W. J. Grant, one pair semi detached 2½ storey brick dwellings, near Roncesvalles avenue, on south side Pearson avenue, \$5,000; P. McConry, one pair semi detached 2 storey brick dwellings, near London street, on 748-750 Euclid avenue, \$4,500; Geo. Griffin, 2½ storey brick dwelling, near Czar street, on 34 Northson avenue, \$5,000; Theron Gibson, one pair semi detached 2 storey brick dwellings, Lansdowne ave, Nos. 593 and 595, \$4,000.

CONTRACTS AWARDED.

PORTAGE, MAN.—The contract for the new Union Depot has been let to Jeffrey Bros.

NORTH BAY, ONT.—Chamberlain Bros., of Chesley, P. Q., have obtained the contract for the new Opera House.

KINGSTON, ONT.—The T. & N. O. Railway have awarded the contract for ten new engines to the Canadian Locomotive Co.

VANCOUVER, B.C.—It is announced that McDonald, Wilson & Synder have been awarded the contract for the new Court House.

PRINCE RUPERT, B. C.—The United Supply & Contracting Co. have secured the contract for a large warehouse to be built on the G. T. P. wharf.

THOROLD, ONT.—The following tenders have been awarded: Sedimentation Basin: Gartshore & Thompson, \$4,881.27; pipe laying, Fraser & Ward, \$2,016 and \$1,223.92.

COLBORNE, ONT.—Frank Neagle has secured the contract for the wheeled rig factory. The building is to be 272 feet long, 60 feet wide, two stories, and is to be completed in October.

PRINCE ALBERT, SASK.—Steam heating and plumbing for the following buildings: Baker block, Pollock block, Ross block, Moore block, McKay & Adam block, Presbyterian church and the Presbyterian Manse; O. B. Manville.

LETHBRIDGE, ALTA.—In connection with the C.P.R.'s enormous steel bridge, the following contracts have been let: Building abutments and concrete superstructure, John Gunn & Sons, Winnipeg, reported cost \$200,000; superstructure, Canada Bridge Company, Walkerville, Ont.

GRAVENHURST, ONT.—The Corporation are installing a hydro-electric plant at South Falls, for the supply of

Power and Light in Gravenhurst. W. M. Beall & Co. are building the eight miles of transmission line including: 1 a telephone line, connecting South Falls and Gravenhurst.

WINNIPEG, MAN.—The Board of Control have recommended the purchase of 4,000 ties required in tramway work from E. F. Kendall, Kenora, at 30 cents a piece, also 200 tons of 56 pound rails, from John Godson, Toronto, at \$39.25 a ton.—J. O. McArthur has secured the contract for the C. P. R. extensions north of Moose Jaw at \$300,000.—The Corporation have awarded the contract for 200 tons of steel rails to J. J. Gartshore, of Toronto.

FIRES.

Buildings of Central Canada Exhibition Association, Ottawa, Ont., loss \$25,000.—Wharves and offices, Toronto Ferry Co., Toronto, loss \$4,000.—Business block and properties of Gilmour & Richardson at North Bay, Ont., total loss \$50,000.—Six houses, property of Mrs. McClelland, Ottawa, Ont., loss \$4,000.—Factory of Dominion Furniture & Mfg. Co., also Forget's Hotel, Ste. Therese, Que., totally destroyed, loss \$100,000.—Horse barns of Halifax Exhibition, Halifax, N. S., loss \$5,000.—Warehouse, barns and sheds of J. B. Jackson, Simcoe, Ont., loss \$5,000.—Methodist Church, Muir street, Welland, Ont., loss \$12,000.—Sawmills and machinery, of Miller & Seim, Hampden, Ont., total loss \$7,000.—Barns and cars of the South-Western Traction Co., London, Ont., totally destroyed, loss \$75,000.

NEW COMPANIES.

The Don Bessemer Ore Company, Limited, Port Arthur, Ont., incorporated, capital \$7,500,000. Directors, W. F. Langworth, and A. J. McComber, of Port Arthur, and R. J. Anderson, Minneapolis.

Canada Hide & Wool Co., Sherbrooke, Que., incorporated, capital \$200,000. Incorporators, Charles J. Beal and W. F. D. Tanner, of London, Ont., and H. E. MacIntosh, L. R. Dowfar and W. J. Dubbo, of Montreal.

James L. Burton & Son Lumber Company, Limited, Barrie, Ont., incorporated, capital \$250,000. Incorporators, James Lindsay Burton, F. L. Burton, W. H. Walker, F. C. Lett and A. Alexander.

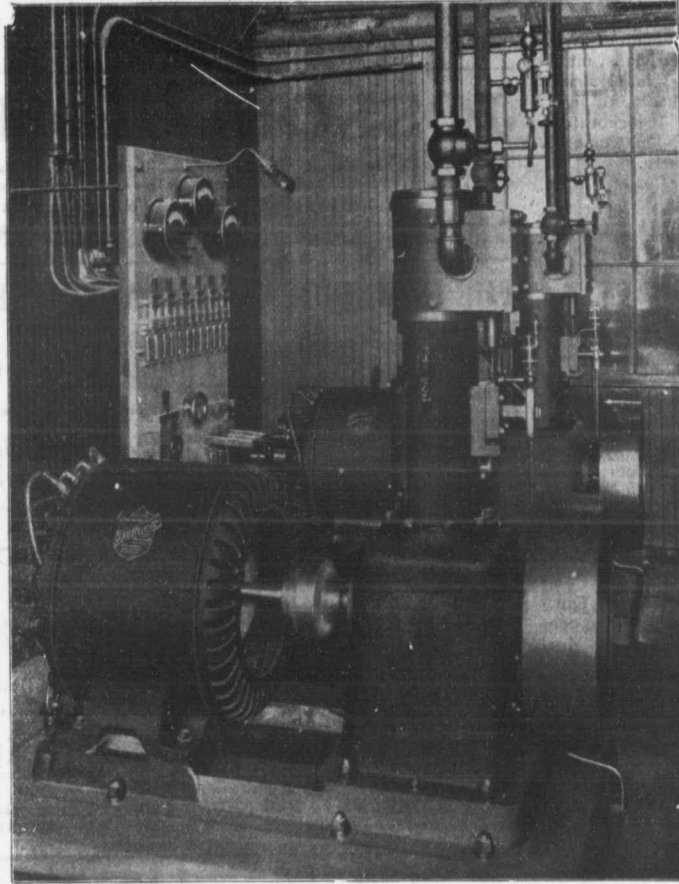
Mackie Bros. Limited, North Bay, Ont., incorporated as hardware merchants and to carry on a general plumbing, heating and electrical business. Capital \$100,000. Incorporators, A. T. Mackie, W. L. Mackie, B. S. Leak and others, all of Pembroke, Ont.

The Beaty Timber Company, Limited, Toronto, incorporated, capital \$100,000. Directors, Malcolm Macnair, James Philip Beaty and Cassie Macnair.

Larder Lake International Mines, Limited, Port Arthur, Ont., incorporated, capital \$5,000,000. Directors, W. H. Cluff, W. S. Cluff, D. C. McLaren, A. Rosenthal and O. E. Culbert of Ottawa, and J. Mowat of Kingston.

Canadian Wolverine Company, Limited, Chatham, Ont., incorporated to deal in factory and waterworks supplies, and machinery. Capital \$100,000. Incorporators, L. A., H. C., and C. W. Cornelius,

Electric Light Plants



Two of our 11 K.W. Generators and Auxiliary Apparatus, forming the lighting plant of Dow's Brewery, Montreal. The base of each set is only 57½ in. x 32 in.

"Allis" Mining, Saw Mill and Flour Mill Machinery, Engines, Pumps, Steam Turbines, Turbine Water Wheels.

"Bullock" Electric Apparatus.

"Ingersoll" Air Compressors, Coal Cutters and Rock Drills.

"Lidgerwood" Hoisting Engines.

ALLIS-CHALMERS-BULLOCK LIMITED

Head Office and Works : MONTREAL

District Offices :

MONTREAL : Sovereign Bank Bldg.
 NEW GLASGOW : National Telephone Bldg.
 WINNIPEG : 251 Notre Dame Ave.

TORONTO : Traders Bank Bldg.
 NELSON : Josephine St.
 VANCOUVER : 416 Seymour St.

14, 1907
 urst. W.
 the eight
 eluding; 1 a
 uth Fa ls
 Board of
 purchase
 way work
 t 30 cents
 und rails,
 t \$39.25 a
 cured the
 sions north
 The Cor-
 ntract for
 Gartshore,
 Exhibition
 \$25,000.—
 Ferry Co.,
 s block and
 ardson at
 \$50,000.—
 McClenlan,
 Factory of
 Co., also
 ue, totally
 orse barns
 x, N. S.,
 s and sheds
 Ont., loss
 ur street,
 Sawmills
 m, Hamp-
 Barns and
 ction Co.,
 oyed, loss
 S.
 Company,
 t., incor-
 oo. Dir-
 , and A.
 hur, and
 lis.
 o., Sher-
 d, capital
 Charles
 anner, of
 MacIn-
 d W. J.
 n Lumber
 ie, Ont.,
 \$250,000.
 dsay Bur-
 Walker,
 der.
 , North
 as hard-
 rry on a
 king and
 tal \$100,-
 Mackie,
 Leak and
 Ont.
 Company,
 rporated,
 rs, Mal-
 lip Beaty
 al Mines,
 t., incor-
 oo. Dir-
 S. Cluff,
 nth and
 a, and J.
 Company,
 incorp-
 nd water-
 machinery.
 rporators,
 Cornelius,

all of Grand Rapids, Mich., and R. Gray and W. H. Westman of Chatham.

Interlocking, Piling and Engineering Company, Limited, Toronto, incorporated, capital \$200,000. Directors, H. E. Pearce, A. Gate, W. H. Smith, George Kerwin and Matthew Irving all of Toronto.

The Green River Electric Company, Limited, Edmundston, N.B., incorporated as electricians, manufacturers and dealers in electricity for motive power, heat and light, capital \$49,000. Incorporators, J. E. Stewart, J. G. Donworth, T. M. Richards and others.

Spruce Lumber Company, Limited, Winnipeg, Man., incorporated, capital \$45,000. Incorporators, D. B. McDonnell, Winnipeg; and W. C. Perkins, Chas. McDonnell, H. H. Williams and M. C. Edey, Ottawa.

The Japanese General Contract Company, Limited, Vancouver, B. C., incorporated as shippers and importers and exporters of merchandise.

Canadian Jack Company, Limited, Windsor, Ont., incorporated to manufacture farm implements. Capital \$25,000. Incorporators, J. W. Yakey, M. Riddle, H. H. Calkins, Harvey Greene and others.

British Canadian Distilling Company, Limited, Owen Sound, Ont., incorporated, capital \$50,000. Directors, W. Taylor, J. D. Mor-

gan, J. P. Raven, W. H. Sinclair, J. C. Crane and H. M. Graham.

AMHERST ENTERPRISE.

A pressing need has been supplied to the industrial community of Amherst by the installation of an electric power plant by the Maritime Coal, Railway and Power Company, who with considerable ingenuity have utilised the hitherto

valueless coal at Chignecto for the generation of electricity which they effectively transmit over 6¼ miles.

Cope & Frey, electrical supplies, Vancouver, have dissolved.

Baxter Patterson Engineering Supply Company of Montreal have dissolved. Craik & Lindsay, general contractors, of the same city, have registered.

JOSSON CEMENT

Is the Highest Grade Artificial Portland Cement and the Best for High Class Work. Has been used largely for Government and Municipal Works.

TO BE HAD FROM ALL CANADIAN DEALERS OR FROM

C. I. DE SOLA, 180 St. James Street, MONTREAL

THE JOHNSON CORRUGATED STEEL BAR

FOR



REINFORCED CONCRETE

Manufactured by

THE CORRUGATED STEEL BAR CO. OF CANADA, LIMITED

Operating under Johnson Patent No. 91630 and by license of Sir Wm. Mather.

Office: Coristine Building, MONTREAL

Opportunities to Manufacturers

WINNIPEG

the Manufacturing and Marketing City of Western Canada seeks an extension of its Industries. The Pivot of Canada's great Transcontinental Railway Systems, the most progressive city in Canada, offers

Opportunities to Capitalists

Let us send you Full Information.

CHARLES F. ROLAND, Industrial Commissioner,
Winnipeg Development and Information Bureau, - - WINNIPEG, Canada.

A. LEOFRED

(Graduate of McGill).

Consulting Engineer

WATERWORKS A SPECIALTY.

39 St. John Street **QUEBEC**
Metropolitan Ins. Bldg.
Phone 545.

JNO. S. FIELDING

C. E.

CONSULTING ENGINEER

EARTH LOADED

STONE LOADED

WATER LOADED

REINFORCED CONCRETE

DAMS

ALSO

HYDRAULICS,
WATER POWER
DEVELOPMENT
REPORTS, ESTIMATES, ETC.

15
TORONTO STREET - TORONTO

We Manufacture

Wheel Scrapers

FOR THE CONTRACT TRADE

Write for our Catalogue

BECHTELS LIMITED

Waterloo, Ontario

THE STANTON IRON WORKS CO.

Near NOTTINGHAM, ENG.

Largest Makers of Cast Iron Pipe in the World

LIMITED

Annual Output
100,000 Tons



CAST IRON PIPE

SIZES: 1½ in. to 72
in. diameter, 9 ft. and
12 ft. lengths.

Irregular Castings for Gas, Water, Sewerage Work, Steam, Hydraulic and Pump Installations. Also makers of
Cast Iron Tanks, Columns, Girders, Etc.

W. BEVERLEY ROBINSON

AGENT FOR CANADA
Board of Trade Building

MONTREAL

BUILDING IN TORONTO.

The monthly statement issued by the City Architect of Toronto, shows that the building permits issued to date this year represent the large sum of \$10,239,330. Following is the statement:—

Approx. value of building, Jan. 1 to July 31	1906 \$7,391,905	1907 \$10,239,330
Approx. value of buildings for July	1,193,435	1,219,435
No. of building permits issued Jan. 1 to July 1	2,015	2,456
No. of buildings for which permits were issued for July	460	538
No. of new buildings erected from Jan. 1 to July 31	2,624	3,562

PERSONAL.

Prof. E. Brydone Jack has been appointed to the Chair of Civil Engineering in the University of Manitoba.

Mr. E. H. Keating and Mr. Wm. H. Breithaupt have announced the formation of an engineering partnership under the name of Keating & Breithaupt, with offices in the Aberdeen Chambers, Victoria street, Toronto. They will carry on business as civil engineers, taking up all branches of railway and muni-

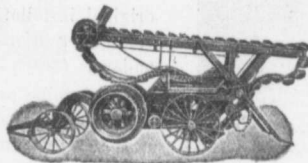
cipal work, power developments, bridges, etc.

Snow-load on roofs is the subject of some recent measurements by Mr. S. de Perrot, of Neuenburg, Switzerland. Where a heavy fall of snow was followed by thawing and freezing successively and then more snow, and thus in repeated cycle, a coherent laminar mass of snow and ice is formed on roofs, which is of remarkable density. Several such "snow" accumulations proved to have a weight of 36 to 38 lbs. per cu. ft. In these cases the thickness of the accumu-

lated snow on the roof was 24 to 32 ins., thus producing a load of 70 to 100 lbs. per sq. ft. This is three or four times as much as is commonly assumed in calculation. Unfortunately the note from which we quote these observations (Schweizerische Bauzeitung, March 2, 1907), does not state the pitch of the roof surfaces in question. It is to be observed that the past winter has been a season of exceptionally heavy snowfall. On the Arlbers, it is reported, a total of 27 ft. of snow has fallen this winter.

THE PRIESTMAN EXCAVATOR AND DREDGER

is used throughout the world. Will do more work with less labor, at a less first cost than any Excavator at present in use in Canada. For particulars write
G. P. WALLINGTON,
Canadian Representative,
11 Front Street East, Toronto



Supplied in 4 sizes on wheels or skids, with or without elevators, etc.

METALLIC
WRITE FOR PRICES
METALLIC ROOFING CO. LIMITED
TORONTO, CANADA
CEILING

NOTICE to CONTRACTORS and QUARRYMEN

Get prices on our
NEW SOLID STEEL FRAME CRUSHERS

Especially adapted for road making, mining and general contract work.

Sawyer & Massey Co., Limited
HAMILTON, CANADA

FIRE BRICKS ALL BRANDS

— Exclusive Agents for —

"MAC," "MORAY" AND "FORTH" BRANDS.

BEST SCOTCH FIRE CLAY AND GANISTER

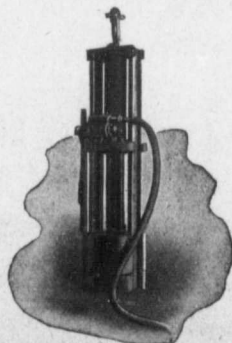
Baxter, Paterson & Co.

(Agents for D. M. STEVENSON & CO., GLASGOW)

Tel. Main 847. - - 102 St. Antoine St., - MONTREAL

M
I
D
MIDLAND
A
N
D

AUTOMATIC PILE HAMMERS



Reasons!

- They drive more rapidly and more economically.
- They require less attention during driving.
- They do not shatter the Pile.
- They can drive pile when the drop hammer cannot.
- There is no wearing out of hoisting lines.
- They drive more piles in a day.
- They usually leave the pile so that it need not be cut off.
- They make sharpening of piles ordinarily unnecessary.
- Our catalog tells a whole lot more. A postal card will bring one.

Georgian Bay Engineering Works
MIDLAND, ONT.

THE ELECTRIC PLANT AT EAST TORONTO

In the summer of 1904 the Corporation of East Toronto, Ont., decided to build a power house and install an electric plant. The power house, shown in the accompanying illustration, is a brick structure, and the electric plant contained therein serves the purpose of supplying both light and power, the water-



POWER HOUSE, EAST TORONTO, ONT.

works system being operated by electricity. The consulting engineer for the work was Mr. John Galt, of Toronto.

The engine is a single cylinder non-condensing Goldie Corliss engine, built by the Goldie & McCulloch Company, Limited, Galt, Ont. The diameter of the cylinder is 17 inches and the stroke 30 inches. The engine runs at a speed of 120 revolutions per minute. The rated load of the engine is 225 indicated horse-power, but owing to the double eccentric type

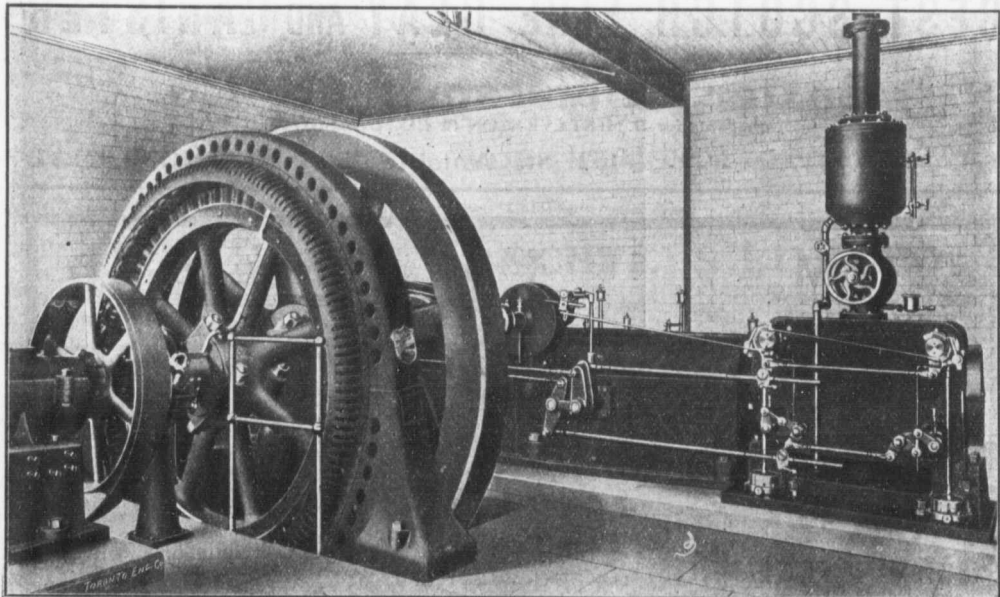
of valve motion the engine is capable of carrying an overload of 60 per cent. above its rated capacity.

The engine is fitted with the Rites inertia governor, which is specially adapted for running high frequency alternators in parallel, and the flywheel is of sufficient capacity to enable the generator to be run in parallel with another 60 cycle machine. The field of the generator is mounted directly on the engine shaft, which also carries a pulley from which the belted exciter is driven.

The generator, which was furnished by the Canadian Westinghouse Company, is a 150 kw. 2,200 volt 3 phase 60 cycle revolving field machine, operating at 150 revolutions per minute. It has 48 poles, and the frequency is 7,200 alternations per second. The exciter is a 15 kw. 125 volt direct current multi-polar compound wound generator operating at 1,050 revolutions per minute. The switchboard is of blue Vermont marble, containing the usual instruments. The original installation comprised three transformers, 7,200 alternations, 2,080 volts primary, 575 volts secondary.

The turbine pumps and motors were furnished by the Canadian General Electric Company. There were in the original installation two 6 inch 3 stage turbine pumps, each having an easy capacity of 660 gallons per minute when operating against a pressure of 100 pounds per square inch. Each pump is direct connected to a 60 horse-power alternating current motor of suitable speed to operate the pumps against the desired head at maximum efficiency. When operating under exact conditions, as stated, the commercial efficiency of the pumps is guaranteed to be not less than 75 per cent.

The water tower, shown in the illustration, was furnished by the Canada Foundry Company. It is a steel tower with tank, the top of the tank being 120



VIEW OF ENGINE AND GENERATOR, EAST TORONTO MUNICIPAL PLANT.

feet above the top of the foundations. The tower is erected on steel trestle work over a steel reservoir 50 feet in diameter by 20 feet high, the top of the foundation of the trestle being on the same level as the



WATER TOWER, EAST TORONTO, ONT.

bottom of the steel reservoir. The capacity of the water tower is 80,000 imperial gallons, which is used for fire protection purposes exclusively, while the reservoir has a capacity of 200,000 imperial gallons.

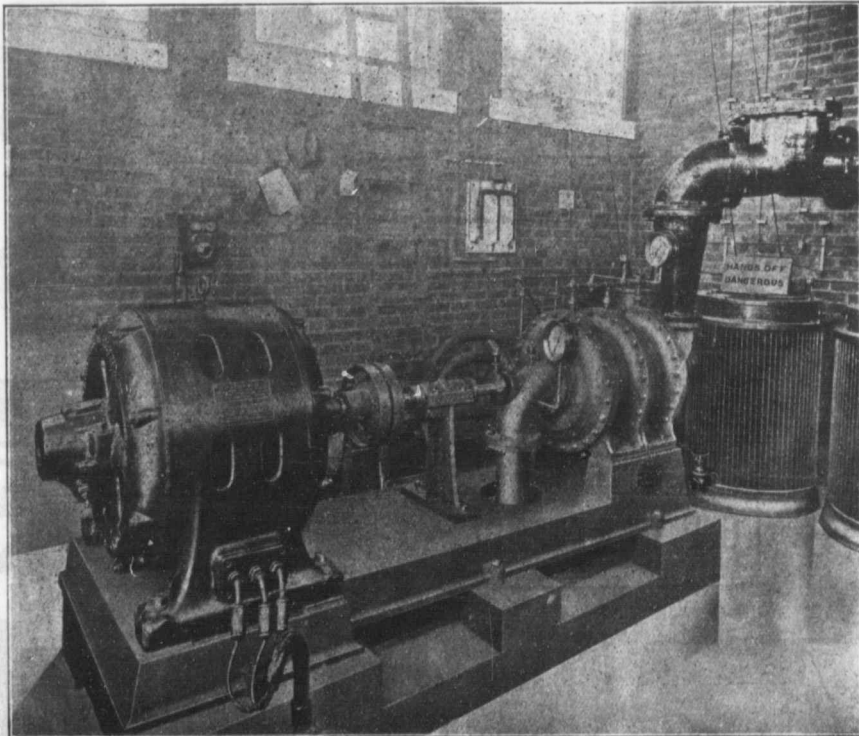
PLATINUM.

A company has been incorporated in London, known as the Platinum Corporation, with a capital stock of \$1,500,000, to develop concessions in the platinum-bearing districts of Russia, which for nearly a century has been the producer of nearly 90 per cent. of the platinum supply of the world. Platinum sold in 1892 for less than \$10 an ounce. In two years the price had risen to \$18.50, and in December of that year it was \$19.50. In April, 1905, it brought \$20.50. It continued to advance until in February, 1906, it sold for \$25. Last September it was quoted at \$34. The top-notch price of \$37 and \$38 was reached in March, this year, and then the price gradually declined to \$25 on July 1st. Three weeks ago there was an advance of \$1.

Platinum is almost indispensable in the manufacture of incandescent electric lamps and is also required for contacts in telephone switchboards.

CIVIC PLANT TO BE ABANDONED.

The Board of Control of the City of Winnipeg has decided to abandon the city's electric lighting plant, and to purchase the current required from the Street Railway Company. It is claimed that the purchase of the power from the Street Railway Company will mean a saving of close upon 50 per cent. on the cost of generating it. At the present time the city is generating current for the direct current lamps, used for street lighting. These lamps number about 200. The city also supplies the power necessary for the wells except for the fire booster at well No. 2, which is supplied by the Street Railway Company.



VIEW OF TRANSFORMERS, MOTORS AND TURBINE PUMP, EAST TORONTO PLANT.

RATES FOR WATER SERVICE.

(Continued from last week.)

The fixing of rates for private fire protection is so intricate a problem, and involves consideration of so many points, that no fixed rule can be laid down that will fit all cases. It is believed that a reasonable sliding scale of rates for such service might be arrived at as follows: A minimum rate for the smallest size of fire service pipe, and larger rates for larger service pipes, the rates for each size of fire service pipe to bear some approximately uniform relation to the special benefits derived by the private interests protected.

Rates for water for purposes other than fire protection are of two general classes: fixture rates and meter rates. Originally all water was sold at fixture rates; but the necessity for checking waste, and the recognized inequity of fixture rates, as applied to individual cases, have brought about the introduction of meters, which is now going on at a constantly increasing speed. The earliest fixture rates were necessarily established largely by guess; and later ones have been fixed, sometimes by taking the average and sometimes by picking out the lowest of all the guesses made by previous guessers. Little or no account was usually taken of the difference in cost of furnishing

water in different locations and under varying conditions.

That fixture rates are not now, as a rule, excessive is indicated by the fact that when all legitimate expenses are charged up, few municipally-owned plants earn large profits; and that the securities of private water companies are no longer so eagerly sought by investors as they were some years ago. The objection to fixture rates as a basis of the value of water service does not lie in the fact that they cannot be made, in the aggregate and for any one city as a whole, as equitable as any other rates; for this is not only possible, but is a condition which actually obtains within reasonable limits in many cities. But with fixture rates no close discrimination can be made between individual cases; and they therefore fail to fulfil the second essential condition of a fair rate. Furthermore, they fail to check waste and leakage.

These considerations naturally lead to the adoption of meter rates. In almost every city the introduction of meters, if accompanied by the establishment of proper rates, can be made to result in benefit to the water department as well as to the consumer.

The cost of the introduction of meters and of their subsequent maintenance and operation will, with proper rates, be more than offset, and without hardship to the consumer, by the savings in pump-

ing expenses and in the costs resulting from extensions to plant which would otherwise have to be made.

The function of the meter is two-fold: (1) To check waste, and (2) to measure the water used by each consumer, with a view to making his annual payments bear a just proportion to the total fair annual receipts from the works. To treat the meter simply as a device by means of which certain individual consumers may reduce their rates below the fair amount, leaving other consumers to make up the loss, is to defeat its honest purposes.

In order that the meter may properly perform its two-fold function, it is absolutely essential that the meter rates be established on a proper basis. In view of the ever-increasing use of meters, no more vital problem to-day confronts the manager of a water department than the determination of what these rates should be in his city; and it is a problem the solution of which demands the highest degree of skill, careful study of all the conditions, and a wide experience in the financial management of water-works.

Nothing is more fallacious than the oft-repeated argument of some unthinking advocates of the universal introduction of meters, that when a man buys water by the gallon he pays for what he gets. Each consumer, whether he uses little or much water, enjoys the benefit of a

(Continued on page 14.)



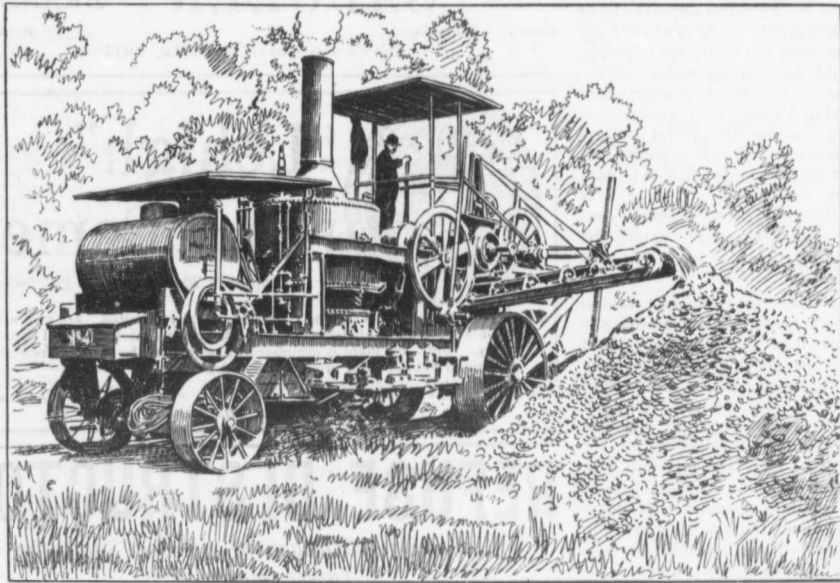
The advertisement features a central text box surrounded by illustrations of various concrete mixer models. The models are shown in different sizes and configurations, including hand-operated and power-operated versions. Some are mounted on wheels, while others are more compact. The text in the center provides technical specifications and pricing information.

CONCRETE MIXERS

Of 14 distinct types and in many sizes.
Capacity 2 to 75 cubic yards per hour.
Most up-to-date in the market.
Of best material and workmanship.
Prices \$120.00 and upwards.
Hand, Gravity and Power.
With power (Steam, Gasoline or Electric) if required.

Made by the
UNITED CONCRETE MACHINERY CO.
Sold by

E. F. DARTNELL, - Montreal



OUR
TRENCHING MACHINES

Working in Edmonton, Alta., Regina, Sask., and
Maisonneuve, Que., have been making an average
for this season of 400 c. y. per day of 10 hours; in
some days they excavated as much as 690 c. y.

Any contractors wanting to save money should
not be without one of our Machines.

FOR FURTHER PARTICULARS, APPLY TO

J. W. HARRIS
MANUFACTURING COMPANY
MONTREAL

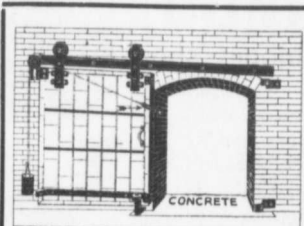
water service always at hand, always convenient. This benefit is the element which is usually termed the "readiness to serve," and the expense to the water department of its readiness to serve is always far greater than the mere cost of pumping and distributing water. Furthermore, the fixed charges and operating expenses for each meter service amount to several dollars per annum; and this expense, together with a sum sufficient to cover the "readiness to serve," is properly chargeable to each consumer, large or small, before the rate per gallon can fairly begin to apply.

To provide for these two expenses, the first method which naturally suggests itself is the establishment of a minimum meter rate. Here again there is a pitfall. If this minimum be too small it will not accomplish its purpose. If it be too large, or if the rate per gallon for small daily uses be too small, the average domestic consumer may draw far more water than he actually needs without paying more than the minimum rate; and this condition will destroy the usefulness of the meter as a means of checking waste.

To set meters wholesale, without due regard for the foregoing facts, would not only work an injustice to some classes of consumers, but might mean financial disaster to the water department; and this in turn would be a misfortune to the whole community.

To develop the full efficiency of the meter as a means of checking waste, and to make each consumer, large or small, pay his fair share of the total receipts of the work,

(Continued on page 16.)



TO CONTRACTORS

We save you money and take all the responsibility on

TIN-CLAD FIREPROOF DOORS

We make the doors, cover them, supply the hardware, use an "ADJUSTABLE HANGER," and hang the doors complete. All work strictly to the Underwriters Requirements.

We have every facility for their production, send us particulars.

A. B. ORMSBY, Limited

FACTORIES:
Corner Queen & George Sts., TORONTO
677-9-81 Notre Dame Ave., W., WINNIPEG.

The HANOVER PORTLAND CEMENT CO., Limited

Manufacturers of

"SAUGEEN" BRAND

Prompt Shipments.

Write for Prices

OFFICE AND WORKS: HANOVER, ONTARIO.



"Lehigh" Portland Cement

Capacity 20,000 Barrels Per Day.

The "Lehigh Portland Cement Company, Limited," are also now building a plant at Belleville, Ont., of 750,000 barrels annual capacity. Until this plant is completed all orders can be shipped from the United States. For prices, etc., address—

THORN CEMENT CO. - Buffalo, N. Y.
SALES AGENTS FOR CANADA

REFUSE DESTRUCTORS

Complete Combustion — Perfect Sanitation
Latest Improvements.

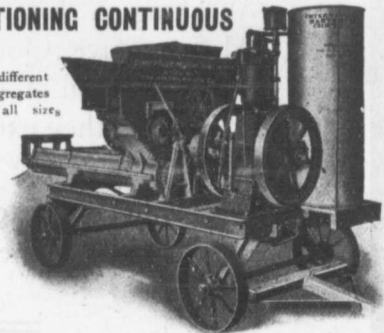
STRUCTURAL STEEL AND BRIDGE WORK

HEENAN & FROUDE, Limited
Manchester, England

RICHARD A. TAUNTON, - 622 McINTYRE BLOCK WINNIPEG

SCHIEFFLER PROPORTIONING CONTINUOUS MIXER

Automatically proportions any three different materials crushed rock and coarse aggregates for large contract work. Made in all sizes, fitted with any kind of power. For Street Paving, Sidewalk, Reinforced Construction, Block and Brick plants there is no Mixer equal to it. A greater capacity and better mix with exact proportions and requires less amount of power than any other Mixer. All parts made extra heavy, strong and lasting.



THE LONDON CONCRETE MACHINERY CO.

28 REDAN ST. - LONDON ONT.

Portland Cement

Monarch Brand

Highest quality—guaranteed to fulfill the requirements of specifications for Portland Cement approved of by the Canadian and American Societies of Civil Engineers.

Prompt shipments from mill or stock at Fort William and Port Arthur.



THE LAKEFIELD PORTLAND CEMENT CO., LIMITED
LAKEFIELD, ONT.

CLASSIFIED INDEX OF ADVERTISERS

ACCIDENT INSURANCE	Page	DRILLING CONTRACTORS	Page	PIPE (CAST IRON)	Page
Ontario Accident Insurance Co.	19	Harvey, J.	24	Baxter, Paterson & Co.	9
BLOWERS		DEBENTURES		Canada Foundry Co.	27
Buffalo Forge Co.	8	Nay, Anderson & Co.	21	Gartshore-Thomson Pipe and Foundry Co.	27
BRICK		Stimson & Co., G. A.	19	Gaudry & Co., L. H.	18
Toronto Fire Brick Co.	11	ENGINEERS AND CONTRACTORS		Canadian Iron & Foundry Co.	24
BRIDGES (STEEL)		British Columbia General Contract Co.	20	Stanton Iron Works Co.	8
Canadian Bridge Co.	19	ENGINEERS (CIVIL)		PIPE (WOODEN)	
Canada Foundry Co.	27	Aitken, K. L.	23	Canadian Pipe Co.	25
Dominion Bridge Co.	20	Canadian Engineers, Limited.	22	Dominion Pipe Co.	25
Jenks & Dresser.	16	Chipman, Willis.	23	Pacific Coast Pipe Co.	25
Phoenix Bridge and Iron Works.	12	Connor, Clarke & Monds.	23	PLUMBERS' SUPPLIES	
CASTINGS (IRON)		Davis & Johnston.	22	Somerville Limited.	5
Laurie Engine & Machine Co.	16	Fenson, C. J.	22	PUMPS AND PUMPING MACHINERY	
Rogers Manufacturing Co.	24	Fielding, John S.	8	Allis-Chalmers-Bullock.	7
CEMENT		Galt & Smith.	18	Canadian Buffalo Forge Co.	4
Alpena Portland Cement Co.	24	Jackson, John H.	23	Canadian Fairbanks Co.	17
Alsen Portland Cement Co.	24	Lea & Coffin.	23	Canada Foundry Co.	27
Baxter, Paterson & Co.	9	Leofred, A.	8	Drummond, McCall & Co.	20
Bremner, Alex.	20	Macallum, A. F.	22	Mussens Limited.	3
Canadian Portland Cement Co.	4	McDougall & McRae.	22	McDougall Caledonian Iron Works Co., John	19
DeSola, C. I.	8	Pitt & Robinson.	23	ROAD MACHINERY	
Gray & Bruce Portland Cement Co.	26	Smith, Kerry & Chase.	23	Cameron & Co., Hugh.	20
Hyde & Co., F.	21	Scott, Wm. Fry.	22	Climax Road Machine Co.	26
Hanover Portland Cement Co.	14	ENGINEERS (MECHANICAL)		Heaman, George.	27
Lakefield Portland Cement Co.	14	Farmer, John T.	24	Morrison & Co., T. A.	20
McNally & Co., W.	16	Galt & Smith.	18	Mussens Limited.	3
Morrison & Co., T. A.	26	ENGINES		Sawyer & Massey Co.	9
Owen Sound Portland Cement Co.	26	Allis-Chalmers-Bullock.	7	ROCK DRILLS	
Ontario Portland Cement Co.	16	Cameron & Co., Hugh.	20	Allis-Chalmers-Bullock.	7
Raven Lake Portland Cement Co.	21	Laurie Engine & Machine Co.	16	ROPE	
Stinson-Reeb Builders' Supply Co.	21	Rogers Manufacturing Co.	24	Dominion Wire Rope Co.	28
Thorn Cement Co.	14	Sawyer & Massey Co.	16	Greening Wire Co., B.	22
CONTRACTORS' SURETY BONDS		ELECTRICAL APPARATUS AND SUPPLIES		STEEL BARS (CORRUGATED)	
United States Fidelity & Guaranty Co.	22	Allis-Chalmers-Bullock.	7	Corrugated Steel Bar Co. of Canada.	8
CONCRETE MIXERS AND MACHINERY		Canadian Gen. Elec. Co.	27	STRUCTURAL IRON AND STEEL	
Baxter, Paterson & Co.	9	Drummond, McCall & Co.	20	Baxter, Paterson & Co.	9
Canadian Fairbanks Co.	17	Northern Electric & Mfg. Co.	20	Canada Foundry Co.	27
Dartnell, E. F.	11	FIRE BRICKS		Dominion Bridge Co.	20
Gold, Shapley, & Muir	23	Baxter, Paterson & Co.	9	Jenks & Dresser.	16
Hopkins & Co., F. H.	28	FIRE APPARATUS		McGregor & McIntyre.	18
Ideal Concrete Machinery Co.	17	Cameron & Co., Hugh.	20	Phoenix Bridge & Iron Works.	20
London Concrete Machinery Co.	14	McGregor & McIntyre.	18	Taunton, Richard A.	14
Mussens Limited.	3	Morrison & Co., T. A.	20	STONE	
Morrison & Co., T. A.	20	Seagrave, W. E.	16	Crushed Stone, Limited.	16
Toronto Pressed Steel Co.	18	HOISTING MACHINERY		Doolittle & Wilcox.	22
Vining Bros. Mfg. Co.	5	Allis-Chalmers-Bullock.	7	Morrison & Co., T. A.	20
CONTRACTORS' PLANT		Beatty & Sons, M.	21	SHOVELS (STEAM)	
Allis-Chalmers-Bullock.	7	Canada Foundry Co.	27	Allis-Chalmers-Bullock.	7
Beatty & Sons, M.	21	Georgain Bay Engineering Works.	9	Beatty & Sons, M.	21
Canada Foundry Co.	27	Hood & Sons, Wm.	19	Canada Foundry Co.	27
Harris Mfg. Co., J. W.	13	Hopkins & Co., F. H.	28	Hopkins & Co., F. H.	28
Hopkins & Co., F. H.	28	Mussens Limited.	3	Mussens Limited.	3
Jenckes Machine Co.	26	Rogers Mfg. Co.	24	Rogers Manufacturing Co.	24
Mussens Limited.	3	HYDRANTS		SEWER PIPE	
Rogers Manufacturing Co.	24	Canada Foundry Co.	27	Canadian Sewer Pipe Co.	4
Toronto Pressed Steel Co.	18	Canadian Fairbanks Co.	23	Dominion Sewer Pipe Co.	20
Wallington, G. P.	9	Canadian Iron & Foundry Co.	25	SHOVELS	
CONCRETE CONSTRUCTION		Gartshore-Thompson Pipe & Foundry Co.	27	Hopkins & Co., F. H.	28
Ambursen Hydraulic Construction Co.	18	Kerr Engine Co.	24	Mussens Limited.	3
Baxter, Paterson & Co.	9	McDougall Co., R.	21	TELEPHONE SUPPLIES	
CONTRACTORS' EMPLOYMENT BUREAUS		LOCOMOTIVES AND RAILS		Northern Electric & Mfg. Co.	20
North Western Employment Agency.	16	Canada Foundry Co.	27	TANKS AND STAND PIPES	
Reliance Labor Exchange.	1	Gartshore, John J.	19	Canada Foundry Co.	27
Zarossi, Banco.	2	Hopkins & Co.	28	Ontario Wind Engine & Pump Co.	18
CORRUGATED IRON		Mussens Limited.	3	VALVES	
Metallic Roofing Co.	9	Sessenwein Bros.	18	Canada Foundry Co.	27
Ormsby, A. B., Limited.	14	PLASTER BOARDS		Canadian Fairbanks Co.	17
CRUSHERS (STONE AND ROCK)		P. W. St. George.	26	Canadian Iron & Foundry Co.	25
Allis-Chalmers-Bullock.	7	PILE DRIVING		Gartshore-Thomson Pipe & Foundry Co.	27
Beatty & Sons, M.	21	Hood & Sons, Wm.	19	Kerr Engine Co.	27
Canada Foundry Co.	27	Russell, John E.	19	McDougall Co., R.	24
Dartnell, E. F.	11	PAVING AND PAVING MATERIALS		Imperial Plaster Co.	26
Hopkins & Co., F. H.	28	Baxter, Paterson & Co.	9	WOOD FIBRE PLASTER	
Mussens Limited.	3	Ontario Asphalt Block Co.	23	Imperial Plaster Co.	26
Morrison & Co., T. A.	20	Pettypiece Silix Stone Co.	23	WHEEL SCRAPPERS	
Sawyer & Massey Co.	16	Silica Barytic Stone Co. of Ontario.	20	Bechtels Limited.	8

meter rates should be established about as follows:

(1) The minimum rate should be nearly large enough to provide for the "readiness to serve," as well as for the added expense of the meter service.

(2) There should be a sliding scale of rates for measured water.

(3) The highest rates in this scale should be so adjusted that the average domestic consumer could draw, without exceeding his minimum rate, only enough water for his reasonable requirements, so that the incentive to avoid waste might always be present; and the lowest rates in the scale should be such as to encourage large consumers to patronize the water department, the profits from this patronage being, of course, ultimately applicable to the lowering of rates to all consumers.

From all of the foregoing, it will be seen that rates of all classes are co-related. The total receipts should just provide for the total legitimate expenses, as enumerated in the definition of the first essential condition of a fair rate. Each class of service should be made to furnish its quota of the total receipts from all classes of services; and each individual consumer should pay his just proportion of the total receipts from the class to which he belongs. It is admitted that this ideal state of affairs can never be fully realized in actual practice; but many notable instances of mistakes already made in the establishment of rates furnish abundant proof that a careful, sane and intelligent study of conditions will do much towards approximating the desired results.

STEEL

HIGHWAY

BRIDGES

JENKS & DRESSER

SARNIA, ONT.

BUILDERS OF

STEEL HIGHWAY BRIDGES

STRUCTURAL STEEL WORK

CONCRETE ABUTMENTS

Portland Cement...

HIGH GRADE GERMAN BRANDS FOR GRANOLITHIC AND ARTIFICIAL STONE SIDEWALKS.

**Sewer Pipes, Best English Cements. Best Belgian Cements
Culvert Pipes, &c. W. McNALLY & CO., Montreal**

Crushed Stone, Limited

STONE of any Size and in any Quantity on hand for Sidewalks, Roadwork or Concrete Work

Works:
KIRKFIELD, ONT.

Head Office: 47 Yonge St. Arcade. TORONTO
Phone Main 4516
G. W. Essery, Manager.

Blue Lake Cement

MADE BY

THE ONTARIO PORTLAND CEMENT CO. LIMITED
HEAD OFFICE: BRANTFORD, ONT. LONG DISTANCE 'PHONE 194

THE NORTH WESTERN EMPLOYMENT AGENCY

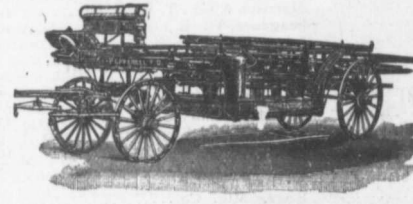
We supply men of all nationalities on short notice.

Laborers, Railway Men, Mechanics, Bushmen, Teamsters, etc., furnished on demand.

378 Craig Street West, MONTREAL TEL. MAIN 468
We undertake all kinds of Contracts by letter or telegram

LIGHTNESS, STRENGTH AND ECONOMY

Seagrave Patent Trussed Ladders, Trussed Aerial, City Service and Village Hook and Ladder Trucks, Combination Hook and Ladder Trucks and Chemical Engines, Trussed Trucks and Hand Pumps, Combination Hose Wagons and Chemical Engines, Hose Wagons, Combination Hook and Ladder Trucks and Hose Wagons, Chemical Engines, Fire Extinguishers, Hose Reels, Patrol Wagons, Ambulances, Specialty Wagons, Patent Sleigh Runners, and other Modern Fire Fighting Tools.



Prompt attention given all inquiries. All goods built to order.

Long Distance Phones 686 and 684 **W. E. SEAGRAVE,** WALKERVILLE ONT.

"LAURIE" POWER PRESSES

Following are a few of the lines we manufacture

"PUNCHING" "INCLINABLE" "SOAP"

"PENDULUM" "BUMPING"

AND ALL KINDS OF SPECIAL PRESSES

LAURIE ENGINE MACHINE COMPANY, LIMITED

MONTREAL
Parnelee & Nicholson, Traders Bank Building, Toronto Agents.
Guilford & Son, Upper Water Street, Halifax Agents.

All That a Concrete Machine Should Be



EVERY separate feature of the Ideal Concrete Block Machine has been brought to the highest possible standard of labor saving and profit making. The result is a machine of little cost, but wonderful money-making possibilities.

The Ideal "Down-Face" principle is the only practical, satisfactory and rapid process of concrete block manufacture, and is *protected by a basic patent*. No other machine on this principle can be legally made, sold or used.

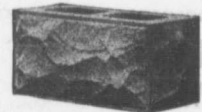
The Ideal Concrete Machine is made practically universal in variety of size, shape and design of blocks by interchangeable accessories and attachments.

(INTERCHANGEABLE) IDEAL CONCRETE MACHINES VARIOUS SIZES

Marvelously simple, durable and strong. Not a spring, chain or gear in its construction. Can never wear out or break in use. May be operated by a boy.

"Ideal" catalogue, a practical encyclopædia of concrete block manufacture, sent free on application. Of special value to builders and dealers in building materials.

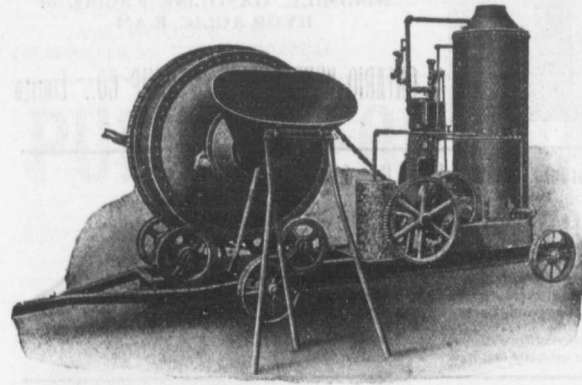
Ideal Concrete Machinery Co.
LIMITED
Dept. A.Q., - London, Ontario



Ideal Block showing natural stone effect. Machines produce endless variety of designs and blocks of any size within capacity.

MUSSENS LIMITED
SOLE AGENTS FOR CANADA
MONTREAL QUEBEC TORONTO WINNIPEG VANCOUVER
Block, Brick and Sill Machines. Mixers, Ornamental Moulds, Etc.

McKelvey Batch Mixers



are the favourites with many Contractors.

They combine strength with many improvements for quickness of operation.

THE FOLLOWING CAPACITIES:

- One Yard Three Fourths Yard
- One Half Yard One Third Yard
- One Sixth Yard One Ninth Yard

WITH

Lever on side of drum operates discharge. Drum bearing-wheels are Cast Steel with Roller Bearings.

Steam, Gasoline or
Electric Power
can be Promptly Furnished

All Mixers mounted on Steel Trucks.
Charging Hoppers always furnished.

The Canadian Fairbanks Co., Limited
MONTREAL TORONTO WINNIPEG VANCOUVER

GALT & SMITH

CONSULTING CIVIL AND
SANITARY ENGINEERS

SPECIALTIES:
WATERWORKS, SEWERAGE
AND ELECTRIC LIGHTING

JOHN GALT, C. E., OWEN W. SMITH,
Mem. Can. Soc. C. E., Assoc. Mem. Can. Soc. C. E.

25 Jordan Street **TORONTO**

The Reliance Labor Exchange

426 St. James St., MONTREAL

Licensed to supply labor of all kinds.
Careful and prompt attention given.

SAUNDERS & BLACK, - Proprietors

FOR SALE

44 Steel Flat Cars in perfect condition
suitable for Lumber or Mining. Standard
Gauge. Capacity 5 to 7 tons. Will sell
cheap to a quick buyer. For further
particulars apply to

SESSENWEIN BROS., MONTREAL

**43
MILLION
DOLLARS**

WAS SPENT
on new
buildings in
Winnipeg
alone during
the past 3
years. . . .

If you want Western
Business you should
cater for its trade by
advertising in the

WESTERN CANADA CONTRACTOR & BUILD- ERS GAZETTE

Published, printed and edited
solely for the West.

For Sample and Advt. Rates, address
730 Union Bank, WINNIPEG.

THE PHOENIX BRIDGE & IRON WORKS, LIMITED

MONTREAL

GENERAL STEEL CONTRACTORS

Large Stock I BEAMS, CHANNELS, ANGLES, TEES, ZEES and
PLATES always on hand.

AMBURSEN DAMS

OF REINFORCED CONCRETE

Write us at once for information.

Ambursen Hydraulic Construction Co. of Canada, Limited
Cristine Building, MONTREAL

McGREGOR & McINTYRE, LIMITED

67 to 91 Pearl Street, Toronto, Ont.

STRUCTURAL IRON WORKS

Beams, Channels, Tees, Angles, Chequered Plates, etc., in stock.
Fire Escapes, Sidewalk Doors, Iron Stairs, etc., etc.
Sole Agents for Duplex Hangers and Goetz Post Caps, Wall
Boxes, etc.

PHONES: 7248
7249

ESTIMATES FURNISHED

Steel and Wood Tanks

Steel Substructures

We are installing Tanks and Towers all over Canada
for Sprinkler Systems, Municipal Water Supply
Plants, Fire Pressure, &c.

Steel Flagstuffs, Bell Towers,
Hose Towers, &c., &c.

POWER FURNISHED —
WINDMILL, GASOLINE ENGINE or
HYDRAULIC RAM

ONTARIO WIND ENGINE & PUMP CO., LIMITED
TORONTO



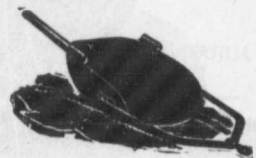
The Toronto Pressed Steel Co., Limited

Toronto and Winnipeg

Manufacturers . . .

Drag Scrapers (Solid pressed bowl)
Wheel Scrapers (pressed or square bowls)
Dump Cars, from 1 to 3 yards
Wheelbarrows, Wood or Steel Trays
Waggons, Carts, Cement Mixers, Etc.

Prompt delivery from stock at Toronto and Winnipeg
Send for complete catalogue. Write nearest office.



Spigot and Faucet Pipe

Flanged Pipe

Turned and Bored Pipe

MADE IN 12' 0" LENGTHS
3 TO 48 INCHES DIAM.



MADE IN SEVERAL WEIGHTS
PROVED FROM 100 TO 700 LBS.

AND SPECIAL CASTINGS

"THE WORLD'S STANDARD FOR ACCURACY, QUALITY AND FINISH."

Write for Our Pocket Edition: The most complete catalog in this line published.

L. H. GAUDRY & CO.,

Canadian Agents for
Robt. MacIaren & Co., Glasgow

QUEBEC AND MONTREAL

The Canadian Bridge Co., Limited

WALKERVILLE, ONT.

MANUFACTURERS OF

RAILWAY AND HIGHWAY BRIDGES

Locomotive Turn Tables,
Roofs, Steel Buildings and
Structural Iron Work of all descriptions

Municipal and Other Bonds
and Debentures Bought
Highest Prices Paid.

G. A. STIMSON & CO.
16 King Street, West - TORONTO

PILE DRIVING

On land and water by steam.
Pile drivers or drop hammers.
Dams, wharves, bridge building
trestle work and general contract-
ing.
Submarine diving and all kinds
of submarine work.



We have always a stock in hand to
let of:
Diving Outfits, Portable Boil-
ers, Hoisting and Pumping
Machinery, Etc.
WM. HOOD & SON
10 Richmond Sq. - MONTREAL

The Ontario Accident Insurance Co.

ACCIDENT, EMPLOYERS, ELEVATOR
AND GENERAL LIABILITY

104 St. Francois Xavier St. Montreal

RAILS FOR CONTRACTORS, SWITCHES, STRUTS, &c. NEW AND SECOND HAND. LOCOMOTIVES AND CARS

John J. Gartshore
53 Front St. West,
(Opposite Queen's Hotel.) TORONTO

ELECTRICITY

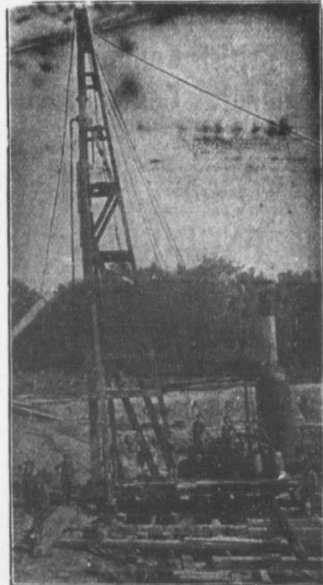
If you desire to keep posted on
the wonderful progress that is
taking place in the use of elec-
tricity for an almost endless var-
iety of purposes, you should sub-
scribe to the

Canadian Electrical News and Engineering Journal

A 44 PAGE MONTHLY.
PRICE \$1 PER YEAR

Write for free sample copy to

The G. H. Mortimer Publishing Co.
LIMITED
Toronto Montreal Winnipeg Vancouver

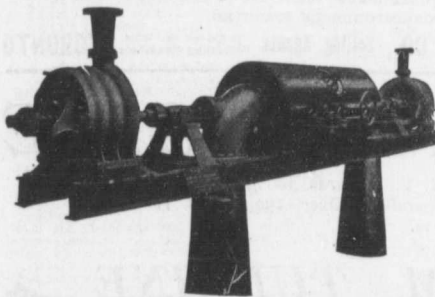


PILE DRIVING

and Foundation Work.

By 5-ton Automatic Steam Pile Hammers
Water Jet or Drop Hammers, Dock Build-
ing, Submarine Work and Dredging.
BUILDING MOVER AND WRECKER
General Contracting.
JNO. E. RUSSELL, - Toronto
Residence, 1010 Queen St. E.—Phone M. 4626
Office and yard 307 Logan Ave.—Phone M. 2007

PUMPS FOR WATER WORKS



WATER WORKS SYSTEMS INSTALLED

Boilers, (Return Tube and Water
Tube,) Tanks, Penstocks,
Mill Machinery.

Builders in Canada of

"WORTHINGTON" TURBINE PUMPS

The John McDougall Caledonian Iron Works Co., Limited.

Estimates Cheerfully Furnished HEAD OFFICE AND WORKS: Montreal.
DISTRICT OFFICES:
MONTREAL, 82 Sovereign Bank Building. TORONTO, 810 Traders Bank Building. WINNIPEG, 251 Notre Dame Avenue
VANCOUVER, 416 Seymour Street. NELSON, Josephine Street. NEW GLASGOW, N.S., Telephone Building.

ARTIFICIAL STONE PAVEMENTS

SIDEWALKS A SPECIALTY
CORPORATIONS Will do well to consider our work
 and prices before letting contract.
The Silica Barytic Stone Company
 of Ontario, Limited.

WALTER MILLS General Manager. **Head Office:**
18 GERRARD ST. E. TORONTO, ONT.

The British Columbia
General Contract Co.
 Limited

Telegraphic Address: "Dredging"

Suite 5, Crowe & Wilson Block, 441 Seymour Street VANCOUVER, B. C.

ENGINEERS
 AND
CONTRACTORS

MUNICIPAL WORKS AND BUILDINGS
 DREDGING AND RECLAMATION
 CONCRETE CONSTRUCTION
 RAILWAYS, BRIDGES
 HARBOR WORKS

Stone Crushers and Grinders.
 Steam Road Rollers.
 Fire Engines Steam and Gasoline.
 Bricks Pressed and Enameled.
 "Roman" building stone.

**"Tamco"**

Crushed Stone
 for Concrete
 Roofing and
 Macadam.

T. A. Morrison & Co.
 204 St. James Street,
 Telephone Main 4532. **MONTREAL.**

Please mention **CONTRACT RECORD**
 when corresponding with
 advertisers.

Dominion
Bridge
Co., Ltd.

P. O. Address, MONTREAL, P. Q.
 Works at LACHINE LOCKS, P. Q.

STEEL BRIDGES

For Railways and Highways
 Piers, Trestles, Water Towers,
 Tanks, Buildings, Roofs, Girders,
 Beams and Columns

Toronto Agent: **GEO. B. EVANS,**
 38 Canada Life Bldg., TORONTO, ONT.

PORTLAND CEMENT

SEWER PIPES

FIRE BRICKS

FIRE CLAY

ALEX. BREMNER

50 Bleury Street, MONTREAL

**SEWER PIPES**

CHIMNEY TOPS
 FLUE LININGS
 WALL COPING



Salt Glazed and
 Vitrified.

TRUE TO SIZE
 IMPERVIOUS TO WATER
 WILL NEVER DISINTEGRATE

Sizes manufactured and
 always in stock:

4-inch to 24-inch.

Ask for Price List
 and Discount.

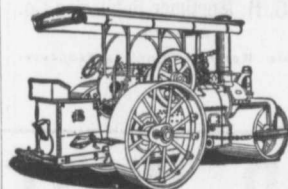
Telephone (Toronto Connection): Park 1809.

Post Office: SWANSEA.

THE DOMINION SEWER PIPE CO., LIMITED
 (THE INDEPENDENT COMPANY)

WORKS AND OFFICE
SWANSEA
 (NEAR TORONTO)

"WATEROUS"
ROAD MACHINERY AND
FIRE APPARATUS



FIRE ENGINES in five sizes,
 with a full line of fire-
 fighting goods.

We Rebuild other makes of
 Fire Engines with our
 patent Boiler.

BRANTFORD PITTS DOUBLE ENGINE STEAM ROAD ROLLER

IN THREE SIZES—10, 12 and 15 ton.

CORRESPONDENCE SOLICITED.

HUGH CAMERON & CO., Selling Agents 75 Queen St. West,
 Manning Chambers, TORONTO

KORTING GAS ENGINE

Action like a steam engine. Sizes 200 B. H. P. upwards to 4,000 B. H. P.
 Specially suitable for driving alternators in parallel. Over 150,000 B. H. P.
 running or in course of construction. Catalogue?

ZOELLY STEAM TURBINE

Safe Installation. Easy Examination. Continuous and Economical Operation.
 Send us your enquiries.

MANUFACTURED BY
Messrs. MATHER & PLATT, Limited
MANCHESTER

CANADIAN AGENTS
DRUMMOND McCALL & CO.
MONTREAL

Prices of Building Material

PRESSED BRICK, Per M.

TORONTO PRESSED BRICK AND TERRA COTTA WORK
F.O.B. Milton, Ont.

Red No. 1.....	\$13 00
" 2.....	11 50
" 3.....	10 00
Buff No. 1.....	17 00
" 2.....	13 00
Brown.....	25 00
Roman Red.....	30 00
" Buff.....	13 50
" Brown.....	40 00
Hard Building.....	8 00
" Sewer.....	7 00
" Backing.....	7 00

Mosaic and Ornamental Brick from \$4.00 to \$6.00 per 100.
Terra Cotta String Courses and Frieze, from 50c. to \$2.00 per ft. run.
Roofing Tiles, \$20.00 per 1,000.

DON VALLEY BRICK WORKS.

Nos. 1, and 2, Red Pressed Bricks.....	
Nos. 1 and 2 Buff Pressed Brick.....	
No. 1 Brown Pressed Brick.....	
Pompeian Red, Buff and Brown Pressed Bricks.....	
Ornamental Bricks of all kinds for Mantel purposes.....	
Glazed Bricks of all Colors.....	
Porous Terra Cotta Fireproofing of all Descriptions.....	
Vitrified Street-Paving Bricks.....	
Semi-Vitrified Foundation Bricks.....	
Common Stock Red and Grey Bricks.....	
Sewer Bricks.....	
Stone or Macadamised Roadways.....	

Please write to head office, 54 Toronto St., Toronto, for Catalogue and prices.

BEAMSVILLE BRICK AND TERRA COTTA CO.

F.O.B. Beamsville.

Red Peerless Facing.....	\$16 00
" No. 1.....	14 00
" No. 2.....	12 00
" No. 3.....	10 00
Brown Peerless Facing.....	20 00
" No. 1.....	18 00
Buff Peerless.....	20 00
" No. 1.....	18 00
" No. 2.....	15 00
Moulded and Ornamental Brick from \$3 to \$10 per C.....	
Roman Red (Size 12 x 4 x 1 1/2 in.).....	30 00
" Buff.....	30 00
" Brown.....	35 00
Vitrified Paving Brick No. 1.....	18 00
" No. 2.....	15 00
Sewer.....	8 00
Roofing Tile.....	22 00

Sackett Plaster Board, 36" x 36" in size, sold at about 2c. per square foot

LUMBER

CAR OR CARGO LOTS, F.O.B. TORONTO.

Per M. Ft.

1 inch No. 1 Pine cuts and better.....	\$9.00 to \$11.00
1 1/2 to 2 inch No. 1 cuts and better.....	54.00 55.00
2 inch No. 2, Pine cuts and better.....	48.00 50.00
1 1/2 to 2 inch No. 3 cuts and better.....	42.00 46.00
1 inch Pine Dressing and better shorts.....	28.00 30.00
1 x 4, 5 and 6 Common.....	27.00 28.00
1 x 10 and 12 Common.....	30.00 35.00
1 inch mill run sidings.....	28.00 29.00
1 x 10 and 12 mill cutls.....	22.00 23.00
1 inch dead cut sidings.....	15.00 16.00
1 1/2 inch Flooring.....	32.00 34.00
Hemlock, 1 x 4 to 8 inch.....	19.00 20.00
" x 4 to 8 inch, 12 to 16 feet.....	22.00 23.00
" x 4 to 10 inch, 16 feet.....	25.00 26.00
1 1/2 inch No. 1 4 ft. Pine Lath.....	4.75 5.00
1 1/2 inch No. 2 4 ft. Lath.....	4.25 4.50
1 1/2 inch No. 1 4 ft. Hemlock Lath.....	4.00
XXXX Pine Shingles.....	3.50 3.75
XX Cedar Shingles.....	2.50 2.75
B.C. Shingles:	
XXX 6 butts to 2 inch.....	3.50
XXXX 6 to 23-16 inch.....	4.07
XXXXX 5 to 2 inch.....	4.50

HARDWOODS—PER M. FEET CAR LOTS.

Ash, white, 1sts and 2nds, 1 to 2 inch.....	\$36.00 to \$38.00
Ash, black, 1sts and 2nds, 1 to 1 1/2 inch.....	33.00 35.00
Birch, M. R. 1 inch.....	21.00 22.00
" 1 1/2 inch to 2.....	23.00 24.00
Basewood, Common and better, 1 to 1 1/2 inch.....	25.00 26.00
Basewood, 1 1/2 to 2 inch.....	28.00 29.00
Elm, soft, mill run, 1 to 1 1/2 in.....	23.00 24.00
Elm, rock, mill run, 1 to 1 1/2 in.....	25.00 26.00
Maple, common and better, 1 to 1 1/2 inch.....	22.00 23.00
Oak red plain, 1sts and 2nds, 2 to 4 inch.....	46.00 50.00
Oak, white, 1sts and 2nds, 1 to 1 1/2 inch.....	44.00 46.00
Oak, quartered, 1sts and 2nds.....	70.00 80.00

We are the largest buyers of Western School Debentures in the British Empire

School Trustees will do well to communicate with us when having debentures to offer for present or future delivery:—

HIGHEST PRICES PAID, PROMPT SETTLEMENT

NAY, ANDERSON & CO.,
Regina Sask.

Lafarge (NON-STAINING) Cement

PORTLAND CEMENT

FIRE BRICKS

DRAIN PIPES

FIRE CLAY

CULVERT PIPES

SEWER BRICK

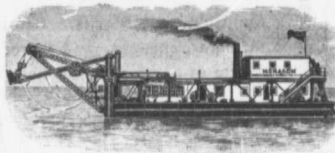
SEWER BOTTOMS

F. HYDE & CO.,

King, Queen and Wellington Sts. - MONTREAL.

M. BEATTY & SONS, LIMITED

WELLAND, ONTARIO, CAN.



Dredges, Ditchers,
Derricks
Steam Shovels,

Submarine Rock Drilling Machinery, Mine Hoists, Hoisting Engines, Centrifugal Pumps for Water and Sand, Stone Derricks, Clam Shell Buckets, Steel Skips, Coal and Concrete Tubs, and other Contractors' Machinery.

Portland Cement

STRICTLY

HIGH GRADE



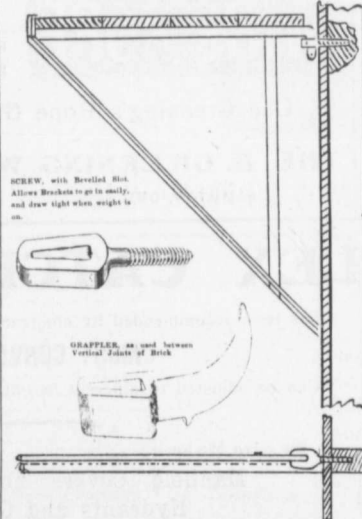
Ask Us

for Prices

RAVEN LAKE PORTLAND CEMENT CO., Limited
VICTORIA ROAD P.O. - ONT.

Interesting and Important

"HUMPHRIE'S" Patent Scaffold Brackets for brick or wood buildings, plasterers, painters, plumbers, and carpenters. They are easily fixed to brick or wood, and are perfectly safe and reliable. They almost save their cost on the first job, and last a life time. First cost only cost. Write for pair of sample brackets, with screw eyes for wood and two Grapplers for brick work.



Agents Wanted for the Province of Quebec.

Stinson-Reeb Builders' Supply Company, Limited

188 William St., Montreal.

DAVIS & JOHNSTON
CIVIL ENGINEERS
WATER WORKS, SEWERAGE
AND SEWAGE DISPOSAL
Wm. Mahlon Davis, Herbert Johnston. C. E.
M. Can. Soc. C. E.
Offices: BERLIN and GALT

JOHN T. FARMER
MECHANICAL and
HYDRAULIC ENGINEER
418 Coristine Bldg. - MONTREAL

C. J. FENSOM, B. A., Sc.
CONSULTING ENGINEER
Aberdeen Chambers - Toronto
Machinery designed, supervised,
inspected and contracted for.
TESTS - REPORTS
Electric Light Plants, Power Plants,
Pumping Plants.

CANADIAN ENGINEERS, LIMIT. D
CIVIL AND CONSULTING ENGINEERS
Electric, Hydraulic Plants,
Waterworks, Sewerage, Bridges.
33 Bank St. Chambers, OTTAWA.

Andrew F. Macallum
Consulting and Constructing Engineer
Steam and Electric Railways, Hy-
draulic, Industrial and Mining Plants.
Rooms 612-4
Continental Life Building - TORONTO
Telephone Main 4552.

McDOUGALL & McRAE
ENGINEERS
Electric Light and Power Plants,
Electric Railroads,
General Consulting Work.
Citizen Building - OTTAWA

WILLIAM FRY SCOTT
STRUCTURAL ENGINEER
Consultation or Design: Buildings, Building
Construction, Foundations, Walls, Roofs,
Bridges, Masonry, Fireproof, Reinforced Con-
crete, Reinforced Brick, Steel, Timber, Specifi-
cations, Examinations, Valuations, and Reports
for Investment.
Aberdeen Chambers Cor. Adelaide
and Victoria Streets, TORONTO, ONT.
Main 4724 North 4260

Contractors to H. M. Governments

ALLAN, WHYTE & CO.
Clyde Patent Wire Rope Works, Rutherglen, Glasgow, Scotland
WIRE ROPES for Cableways, Aerial Ropeways, Elevators,
Cranes, Derricks, Pile Driving, Drilling, etc.
Large stocks carried by **DRUMMOND, McCALL & CO.,**
MONTREAL AND TORONTO


Use Limestone Screenings

for Concrete Blocks. Being free from loam, it makes a stronger, cheaper, and better block than any other material. Write to-day for sample and prices; it means money to you.

Doolittle & Wilcox, Limited, Dundas, Ont.

Advertise-
ments
in the
CONTRACT
RECORD
bring
results

THE UNITED STATES FIDELITY AND GUARANTY Co.



Acts as Sureties on
Contractors' Bids or Tenders
and on Final Bonds
Rates Reasonable. See our Agent
in your town or write direct to us
Head Office for Canada:
6 Colborne Street, Toronto
A. E. KIRKPATRICK, MANAGER

WE WILL BOND YOU

WIRE ROPE

WIRE ROPE

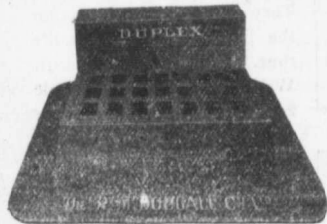
"AGME" BRAND

HIGHEST GRADE OF HOISTING ROPE MADE.
EXTRA TENSILE STRENGTH FOR HEAVY WORK.

Use Greening's Rope Grease for Lubrication.

THE B. GREENING WIRE CO., LIMITED
HAMILTON, ONT. MONTREAL, QUE.

OUR DUPLEX CATCH BASINS



has been recommended by eminent Engineers as the
MOST CONVENIENT FOR CUTTER WORK
Can be adjusted to different heights and is easily placed.

We also Make

Manhole Covers and Frames
Hydrants and General Castings

The R. McDOUGALL COMPANY, Limited,
GALT, CANADA.

MUNICIPAL ENGINEERS, CONTRACTORS AND MATERIALS

WILLIS CHIPMAN

Hon. Grad. McGill University.
M. Can. Soc. C.E. M. Am. Soc. C.E.
Mem. Am. W.W. Ass'n.

**WATERWORKS, SEWERAGE WORKS, GAS
WORKS, ELECTRIC LIGHT AND
POWER PLANTS**

Reports, Surveys, Construction, Valuations

103 BAY STREET - TORONTO

**LEA & COFFIN
and H. S. FERGUSON
ENGINEERS**

Waterworks, Sewerage, Water Powers
Pulp and Paper Mills
Reinforced Concrete Structures of Every
Description.

Coristine Building - MONTREAL

"THE NIAGARA BAR"

**PITT & ROBINSON
ENGINEERS**

411 MANNING CHAMBERS, TORONTO, CANADA
PHONE MAIN 6507
Offices also at Niagara Falls, Canada

A. W. Connor, B.A., C.E. E. R. Clarke, B.A., Sc.
W. Mondt, B.A., Sc.

**CONNOR, CLARKE & MONDTS
CONSULTING ENGINEERS**

Hydraulic, Municipal and Railway Work; Long
Distance Power Transmission; Machinery;
Pumps; Complete Industrial Plants; Fire-
proof Steel or Reinforced Concrete Office and
Mill Buildings; Bridges, Towers, etc.

CEMENT TESTING LABORATORY
36 TORONTO ST. TORONTO, ONT.

**J. LEWIS THOMAS
CIVIL ENGINEER
LONDON - - ONTARIO**

Consulting Engineer for Municipal and County
Work. Electric Railways, Bridges, Water-
works, Sewerage, Wharves, Docks, etc.
Special attention to Valuations and Arbit-
rations.

**Smith, Kerry & Chace
CONSULTING AND CONSTRUCTING
ENGINEERS**

Hydraulic, Electric, Railway, Municipal,
Industrial.

Rooms 124-127 Confederation Life
Building, TORONTO.

W.U. Code used. Cable Address "Smithco"
CECIL B. SMITH J. G. G. KERRY W. G. CHACE

Please mention CANADIAN CONTRACT
RECORD when corresponding
with Advertisers.

John H. Jackson

CIVIL ENGINEER

WATER POWER, ELECTRIC RAIL-
WAYS, STRUCTURAL STEEL.
Niagara Falls, Canada

Associated with Charles H. Mitchell,
C. E., Hydraulic Engineer.

K. L. AITKEN

CONSULTING ELECTRICAL ENGINEER

1003 Traders Bank Building
TORONTO, ONT.

Long Distance Phones { Office - Main 1482
Residence - North 311

More Men Employed in the Paving Business

by the Pettypiece Silex Stone Co.
than by any other firm in Ontario.

There is a Reason.

**Pettypiece Sidewalks are Good
Sidewalks**

We also manufacture Cement Building Blocks, Brick, Tile, etc.

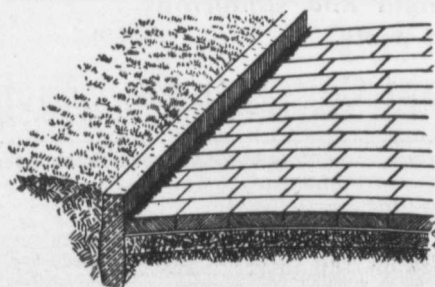
THE PETTYPIECE SILEX STONE CO.
AMHERSTBURG, ONT.

**"IDEAL"
CONCRETE MIXER**

*Most
up-to-date
Mixer
on the
market.*

Write For
Catalogue.

GOULD, SHAPLEY & MUIR CO., LIMITED, BRANTFORD

**A Scientific Pavement**

Must Be

Durable and Non-Abrasive.
Non-Absorbent and Nearly Noiseless.
Unaffected by Extremes of Tempera-
ture
Sightly and Sanitary.
Easily Repaired and Easily Cleaned.

These Requirements are Met by

ASPHALT BLOCK PAVEMENTS

SEND FOR DESCRIPTIVE LITERATURE

THE ONTARIO ASPHALT BLOCK CO., LIMITED

WINDSOR, ONT.

J. HARVEY

CONTRACTOR

GREENSVILLE, ONT.

Driller of Oil, Gas, Salt or Artesian Wells. Deep Wells a Speciality.

20 YEARS' EXPERIENCE IN CANADIAN OIL FIELDS



Contracts taken in any part of Canada. Several years experience in Artesian Wells for Municipal Water Works. Estimates or geological information cheerfully furnished.

REFERENCES GIVEN

DO YOU WANT TO BUY
DO YOU WANT TO SELL

SECOND-HAND CONTRACTORS' PLANT

The best results can be obtained at small cost by an advertisement in the CANADIAN CONTRACT RECORD. The rate is 10 cents per line, twelve lines to an inch.

Replies to advertisements may be addressed in care of this paper and will be forwarded without extra charge.

The Canadian Contract Record
Confederation Life Bldg., TORONTO
BRANCH OFFICES:
MONTREAL - WINNIPEG - VANCOUVER

STEAM SHOVEL HEAVY CASTING DINKEY AND HOISTING ENGINE

Air Compressors - Contractor
Supplies

The Rogers Mfg. Co., FOUNDRY AND WORKS:
Limited Goderich, Ont.



**KERR'S GLOBE
AND
GATE VALVES**
STRICTLY HIGH GRADE.
TESTED & PACKED

WHEN INSTALLING
a water works
system get Kerr Valves
and Hydrants. They give
satisfaction every time.

Mail us your Specifications.



THE KERR ENGINE CO. LIMITED
VALVE AND HYDRANT MANUFACTURERS
WALKERVILLE, ONT.

Please mention the CANADIAN CONTRACT RECORD when
corresponding with Advertisers.

"ALPENA" PORTLAND CEMENT

Made from rock materials of the highest quality.
Always reliable for strength and uniformity.
Write us for prices and tests.

The Alpena Portland Cement Co. - Alpena, Mich.

GERMAN ALSEN, at higher prices than competitors has again this year been awarded the most important contracts of the World because practical tests by leading Engineers proved its merit and relative economy. Note the following:

	1905-1906		1905-1906
MEXICO CITY	120,000 bbls.	U.S. PHILIPPINE GOVMT. ORDER	40,000 bbls.
NECAXA DAM (shipping instructions so far 60,000 bbls.) approximate amount	175,000 bbls.	GOVMT. ORDER SOUTH AMERICA	150,000 bbls.
XOCHIMILCO WATER WKS., MEX. approximate	200,000 bbls.	RIO DE JANEIRO, SANTO, ETC.	40,000 bbls.

Also enormous quantities for the PACIFIC COAST, AUSTRALIA, ENGLAND, SOUTH AFRICA, &c.

There is always a certain trade who will pay for the best. We also make American Alsen, the highest grade of domestic Portland cement.

CEMENT

45 BROADWAY, NEW YORK CITY

CEMENT

We protect our customers!

PACIFIC COAST PIPE CO., LIMITED, - P.O. BOX 563 VANCOUVER, B.C.

Machine Banded
Wood Stave
Water Pipe



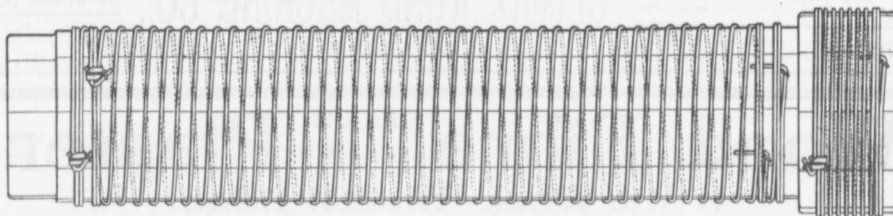
Last year we made 75 miles of pipe of various sizes; one line alone being over 10 miles of high pressure 8-inch pipe for a pumping plant for the C.P. Ry. Co.

WRITE FOR CATALOGUE
FULL PARTICULARS AND ESTIMATES FURNISHED



GALVANIZED WIRE WOUND WOODEN PIPE

No frost breaks, no corrosion. No electrolysis. It is easily and cheaply laid.
Its carrying capacity is never decreased by rust.



The Dominion Wire Wound Wood Water Pipe

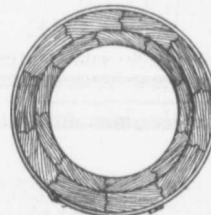
Showing special method of winding with two independent parallel wires.
The great advantage of this is, that in event of one wire becoming damaged the pipe still retains a factor of safety of 2.5.

Made only by

THE **DOMINION WOOD PIPE CO.,**
NEW WESTMINSTER, B. C. LIMITED

Also Manufacturers of Continuous Stave Pipe for Irrigation and Power Purposes.

WRITE FOR CATALOGUE.



End view of Pipe and Coupling.

Please mention the CANADIAN CONTRACT RECORD when corresponding with advertisers.

CANADIAN IRON AND FOUNDRY CO.

LIMITED

Special
Castings
Flange Pipe
Branches
Hydrants
Valves



CAST IRON PIPE

Valve Boxes
and
General
Water
Works
Supplies

SMALL DIAMETER WHEELS AND AXLES FOR CONTRACTORS.

CAR WHEELS. CASTINGS OF ALL KINDS.



Works at:

HAMILTON, ONT.
ST. THOMAS, ONT.
FORT WILLIAM, ONT.



MONTREAL, P. Q.
THREE RIVERS, P. Q.
LONDONDERRY, N. S.



HEAD OFFICE:

IMPERIAL BANK CHAMBERS

MONTREAL

SACKETT PLASTER BOARDS

Great time saver. Fire and sound proof
Cheaper than wooden and metal lath con-
struction. In stock at Montreal and
Toronto. Address

PERCIVAL W. ST. GEORGE,
80 St. Francois Xavier St. Montreal

R. E. H. BUCKNER, Ontario Lime Association,
Toronto.

JAS. J. MURPHY, 85 St. Peter Street, Quebec.

BANCO ZAROSSI

Italian Licensed Labor Contractor
460 St. James St., MONTREAL

All kinds of Italian Laborers furnished
on short notice.

THE GREY AND BRUCE PORTLAND CEMENT COMPANY

of Shallow Lake, Limited.

Manufacturers of
"HERCULES" BRAND OF

PORTLAND CEMENT

Very finely ground. Unsurpassed for Side-
walks, Floors and all work requiring the
highest Grade of Portland Cement. For prices
address.

A. D. CRESSON, Sec'y-Treas.
Head Office, Owen Sound, Ont.

Please mention the CANADIAN CONTRACT RECORD
when corresponding with Advertisers.

SAMSON CEMENT

MANUFACTURED BY

THE OWEN SOUND PORTLAND CEMENT COMPANY, LIMITED

Owen Sound, Ont.

Works at **SHALLOW LAKE, ONT.**

Write us for prices.

THE EUREKA CONCRETE MIXER

is right, will mix wet or
dry just as you please.
Furnished with or with-
out power with Rotary
Pump with two or three
measuring bins for Ce-
ment, Sand and Gravel
or Crushed Stone.

SUITABLE FOR
General Concrete Work,
Brick, Block and Tile
Pipe Makers.

FOR CATALOGUE AND PRICE WRITE

GLIMAX ROAD MACHINE CO., 37 James South
HAMILTON - GANADA

Wood Fibre ^{HARD} WALL Plaster

White Rock (Hydrated) Lime

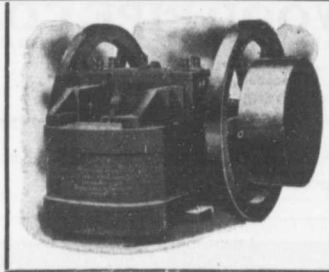
MANUFACTURED BY

THE IMPERIAL PLASTER CO., Limited

Dealers in Cement, Lime, Fire Brick, Fire Clay, Plaster Paris.

King St. (West of Subway) TORONTO

**ROCK
AND**



**ORE
CRUSHERS**

Our Farrel Bacon Style B Ore and Rock Breaker is the
Standard Jaw Crusher of the world.

We build it exclusively in Canada under Letters Patent.

Sizes from 7 in. x 10 in., capacity 5 tons an hour, to 30 in. x
42 in., capacity 150 tons an hour.

All parts interchangeable.

Write for new Crusher bulletin 603.

THE JENCKES MACHINE COMPANY LIMITED

Sales Offices:
St. Catharines, Roseland,
Halifax, Cobalt.

Executive Office:
62 Lansdowne St.,
SHERBROOKE, QUE.

Plants:
Sherbrooke, Que.
St. Catharines, Ont.



Wrecking and Coaling Cranes

In all capacities

In many designs

MARION STEAM SHOVELS AND DREDGES

All sizes and capacities

Prompt Deliveries

— BALLAST UNLOADERS —

Full particulars and prices furnished upon application



F. H. Hopkins & Co
Montreal

