

Lake of Bays

HIGHLANDS OF ONTARIO



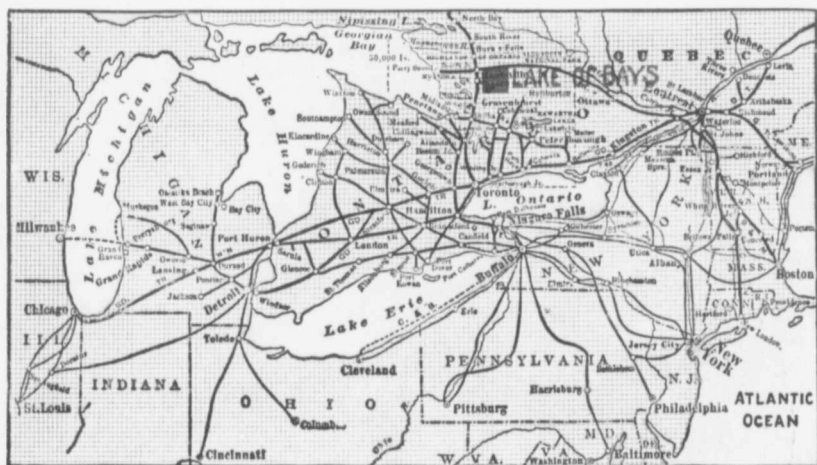
GRAND TRUNK RAILWAY SYSTEM

HAY FEVER

ABSOLUTE IMMUNITY ASSURED

In the Lake of Bays District

THIS territory is situated in the "Highlands of Ontario" over 1,000 feet above the level of the sea and offers, not only a most delightful pleasure ground for the summer months, but all the attributes for dispelling that most annoying ailment "Hay Fever."



GRAND TRUNK RAILWAY MAP, SHOWING ROUTES FROM PRINCIPAL CITIES

The New Hotel—"The Wawa"—which has been erected at **Norway Point, Lake of Bays**, with accommodation for 150 guests, is modern in all its appointments, is situated in a beautiful locality surrounded with lovely scenery. Some of the attractions are boating, sailing, bathing (beautiful sand beach), lovely water trips, tennis, croquet. Pure clean water direct from a mountain spring is also one of the features. Hot and cold water in every room. Rooms singly or en suite. In addition to public baths the hotel is furnished with twenty-two private baths. Rates, \$2.50 to \$4.00 per day—\$15.00 to \$25.00 per week. Applications for reservations and further particulars regarding the hotel should be addressed to J. D. Warde, 112 Union Station, Toronto.

W. E. DAVIS,
Passenger Traffic Manager,
MONTREAL.

G. T. BELL,
Assistant Passenger Traffic Manager,
MONTREAL.

G. W. VAUX,
General Passenger Agent,
MONTREAL.

31365 03774 6730

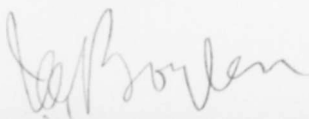
THE LAKE OF BAYS

“Highlands of Ontario”

*A Concise Description of One of the Most
Attractive Summer Resort Districts
in Ontario, Canada*

—
Second Edition, 1909
—

Issued by General Passenger Department,
Grand Trunk Railway System,
Montreal



LANTIC
CEAN

t
n
y
d
a
n.
:d
to
d-
to.
.
ent,

Last Night on Lake of Bays.

Night birds are calling from hill to hill,
Whip-poor-will, hawk and crane;
Spirit o' northland, out o' the memory-land,
Give me the summer again!
O sweet is the wine of spruce and pine,
Golden the flowers that gleam;
And the long, still days in the wild north ways
Drift by like a childhood's dream.

Shadows are flitting from hill to hill,
Loon birds are crying mid-bay;
Spirit o' northland, out o' the memory-land,
Give me but one summer's day.
O strong is the wine of the northern pine,
Purple the flowers that gleam;
But the wondrous days in the wild north ways
Are gone like a girlhood's dream.

Quiet the starlight on hill and hill,
Ghostly the mists on the bay;
Spirit o' northland, into the memory-land,
Gone is my last summer's day.
O rare is the wine of the sweeping pine,
Cold as a hill-born stream;
And the fragrant days of the wild north ways
Are only an ended dream.

—*Edith Florence Robson.*

THE LAKE OF BAYS

Huntsville is the place to which tourists take tickets over the Grand Trunk Railway System from the North, South, East and West to the Lake of Bays District.

Huntsville is 145 miles north of Toronto, a picturesque little town built on the bank of the beautiful Fairy River, which flows into Fairy Lake and out again.

This territory is like other districts in the "Highlands of Ontario," and yet not quite the same. For one thing, the region around about it is rougher, the surrounding hills are higher and the lakes deeper.

The main feature, the chief charm of the district, however, is the gently sloping shores and sandy beaches; there is scarcely a mile in all the shore line — and there is a mile for every day in the year — without a sandy, pebbly beach, and some of them are miles in length.

A sail through these winding waterways and lakes of the Lake of Bays District on one of the new electric-lighted steamers is a thing to be remembered.

Having crossed Fairy Lake and passed "Scotch Bonnet," the first of the many charming islands that bejewel this delightful lake, the pilot of the boat points the white prow into a narrow crooked stream, once a creek, but now dredged out to make a way for these splendid steamers, and with many twists and turns she finds her way out into Peninsular Lake, another charming sheet of water some three miles in width.

Beyond Peninsular Lake, we come to a portage made over a toy-like railroad, — one of the shortest on the American continent, — being one and one-quarter miles in length. Here the traveler, bag and baggage, is entrained and carried up over a hill one hundred and ten feet above the lake and dropped gently down to the Lake of Bays. Here the water journey is taken up again on board the "Iroquois," — a sister ship and the exact duplicate of the "Algonquin," — or the "Mohawk." These are probably the neatest and best appointed of the scores of inland boats that ply on the "Highland" waters. In fact, it would be difficult to find fault with them or to suggest a single comfort or convenience that has not already been provided.

The Lake of Bays is far the largest lake in the Huntsville District. From the deck of the "Iroquois" or "Mohawk" can be seen some inland scenery unsurpassed. The wooded hills billow away in every direction, not a rough, inhospitable shore always, for here and there are wide open reaches running down to the lake, and sometimes away high on the hills are fine farms, from which the lakeside hotels draw new garden truck, fresh butter, buttermilk and sweet cream for the summer tourists. There is a ten-mile sail across the Lake of Bays, but many an enthusiast has taken off his hat long before he has reached the half-way island, and named her Queen of Lakes as she smiled up at the blue sky, her emerald island jewels glowing upon her quiet breast. The very trees that top the high hills that surround her shores seem to sing the praises of the Lake of Bays.

The natural charm and accessibility of this section are making friends year by year for the Huntsville District, of which the Lake of Bays is easily the chief charm.

Dwight Bay, with its green shore curving caressingly around it, and sloping gently and gradually back, sheltering groves with open evenness running down to the water edge, through which we get glimpses of open fields beyond, long reaches of slanting sandy beaches, where babes can bathe in absolute safety; cunning little cottages, picturesque summer houses, the white church, the schoolhouse, the hotel, and the "Iroquois" in the offing, that is but a faint hint of a picture of this beautiful bay. Dwight is its own best advertisement. The fact that the first visitor to this comparatively new resort came twenty years ago from a certain city in the State of New York, went home happy, came again and again, bringing each year others from the same section of that interesting state, speaks well for the Lake of Bays generally, and for Dwight Bay in particular. The bay, walled in on three sides, is as safe for the canoeist as the shallow beach is for bathers.

The opening paragraph in this description describes the scenes to the north at the head of the bay. On the west shore the dark-wooded mainland rises abruptly, while the river comes singing in from the east. Sail around the entire shore line, leave and sail all the other lakes in the "Highlands of Ontario," and there will remain with you the memory of Norway Point, Point Ideal, Britannia, and more distinctly still, Dwight Bay, the Beautiful.

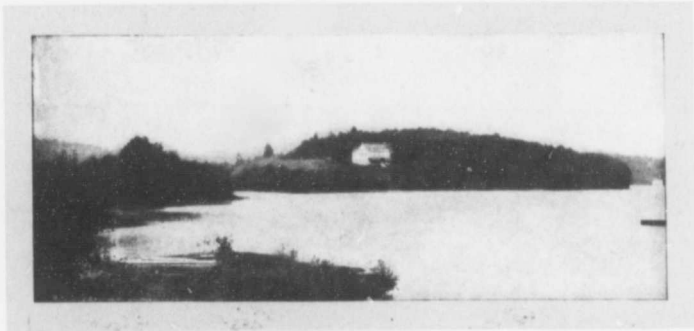
The Huntsville District affords every variety of scenery. The calm pastoral of Vernon, the romantic and ragged mountainous grandeur of Hollow, the fine bathing and quiet scenery of Lake of Bays, and the picturesque beauty, coupled with the unsurpassed fishing and hunting along the entire chain, lend to these waters an attraction and a charm. The ease with which any point along the system may be reached, and the facility with which from the solitude of primeval forests, deep glades, mountain dells, babbling brooks and enchanting lakes (the haunts of



DWIGHT—LAKE OF BAYS.

fish and game), the tourist may find a base of supplies, together with the superiority of the scenery, are among the causes rendering these lakes such favorite camping resorts.

The Rev. Edward S. Young, of Pittsburg, in an article in *The Index*, speaking of the Lake of Bays, says: "The Lake of Bays, where the cool breezes blow the purest air the Almighty has thus far manufactured; where groves of spice balsam lift their graceful minarets against the sky; where the old Laurentian rock, one of the oldest of this earth's formations, juts its bald ledge occasionally above the clearing; where the timbered slopes run toward the waters too rapidly for the accumulation of swamps; where the sandy beach gently feels its way into the soft, clear water, that the children may bathe in safety and hilarity; where in the early summer the speckled trout, unwary, seeks the wriggling worm or the artificial fly and through all the summer down in the cool depths the noble salmon trout awaits the whirl of your otter or archer spinner at the end of your copper troll-line; where the skies and clouds at sunset make the fading light go farther than Russell Sage could make a



DEERHURST—PENINSULAR LAKE.

ten-dollar bill; where the song or the call uttered in the twilight or under the moonlight is taken up by the circle of the surrounding hills and played into a melody of echoes; where you can on the cold nights gather around a fireplace crackling with Norway pine and cedar just for the blaze and fragrance, and plenty of beech and hardwood for solid heat; where all the children and all the dyspeptics suddenly turn into one group of appetites, — appetites and nothing but appetites; where the insomnia wretch sleeps twenty-six hours out of the day and still more out of the night; where there are no nerves and no worry."

Fish abound. Speckled trout, salmon trout and black bass are plentiful in these waters; while whitefish, salmon trout and speckled trout are found in great quantities in the waters of the surrounding lakes. As a field for the geologist and mineralogist, the district is interesting. Wahawin, a delightful resort consisting of one hundred and forty acres, has a frontage on the Lake of Bays. Beginning at a fine

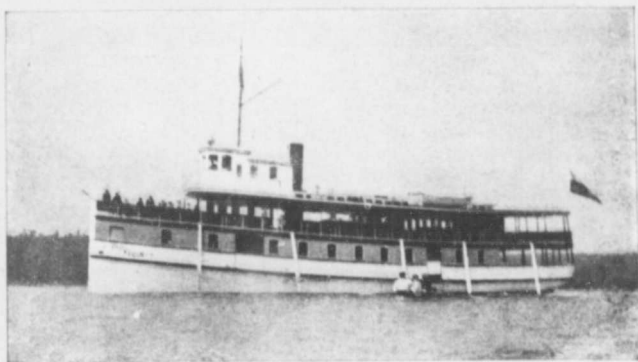


BRITANNIA HOTEL AND GOLF LINKS, NEAR HUNTSVILLE.

shelving beach, it rises in natural terraces 70 to 80 feet to a plateau above, and is wooded on the slope with the choicest of hardwood trees. The location commands one of the finest views on the lake. Cottages are available here, also fine locations for cottage sites.

Not the least of the charms of Wahawin lies in the many woodland walks radiating in every direction from the cottages. There is a daily mail service by steamer.

Another popular resort is Britannia (on Lake of Bays). Britannia is the first calling point of steamer after leaving South Portage and has a tri-daily steamer service with Huntsville. It is located on a fine bay on a sloping hillside, and includes some 300 acres of land, mostly wooded, with about two miles of shore line. The hotel at this point was built for last season's business and is new and modern in every particular, and has room capacity for 150 guests. The bedrooms are large



NEW STEAMER "IROQUOIS" OF HUNTSVILLE NAVIGATION COMPANY.

and airy, with hot and cold water, and bathrooms. Large open wood fireplaces have been built in the dining and lounging rooms, and 500 feet of wide verandas overlooking the lake, make the place complete. The house, verandas, grounds, dock and pavilion are all lighted by electricity. A beautiful beach and new bath houses afford the very best facilities for bathing. Beautifully cleared walks through the woods, along the lake shore, tennis courts and croquet grounds and a fine baseball ground situated on the brow of the hill back of the house overlooking the lake, furnish ample means for recreation. To the other features a fine nine-hole golf links has been added for this year.

Among other improvements made at this resort may be mentioned: a 50-foot extension to the dock, enlarged tennis lawns, waterworks extended to lawns and grounds, large ice house with modern cold storage. A large covered pavilion 100 feet by 42 feet for dancing,

musicales, etc., has been erected, and weekly evening excursions to this point are run by the "Iroquois" for social hops or other amusements. Boating and canoeing is also a popular pastime—new and staunch craft are constantly available, including gasoline launches and sailboats. Lots are for sale here for cottage sites in any size. This is destined to become one of the chief resorts of the Lake of Bays. Double daily mail service. Telephone connection from Britannia to long distance telephone at Huntsville, and one can speak from Britannia direct to Toronto, Buffalo, Detroit or any other point on the Bell system. Milk, cream, garden produce, etc., including even maple syrup taken from "Britannia" maples, supplied in abundance from own farm in connection. Rates \$10.00 to \$15.00 per week. Special rates for large parties or for long



CROSSING THE PORTAGE ON THE "HOT TAMALI LIMITED."

This is one of the shortest railways in the world. It has been constructed by the Huntsville Navigation Company for the accommodation of tourists crossing the portage from Peninsular Lake to the Lake of Bays.

periods. House open from June 15th to October 15th. For further information write to Thos. J. White, Collingwood, Ont., until June 15th. From June 15th to October 15th, address the Manager, C. R. Rumball, Britannia, Lake of Bays, Huntsville, Ont.

The "Wawa"

One of the most charming parts of the "Lake of Bays" District is Norway Point, a popular haven for a colony of summer residents who have erected a number of picturesque cottages. This point was chosen as the site for a new hotel which was constructed last year for the

accommodation of those who do not wish to be bothered with the cares of housekeeping and desire the rest that is found in a life of ease at a resort where the comforts of home are found without the worry and cares of city life. This new hotel was named the "Wawa," which is the Indian word for the "Wild Goose." It contains one hundred rooms, arranged so that they may be occupied singly or en suite. Besides the public baths that are found on each floor, there have been provided twenty-two private baths in connection with bedrooms en suite, a feature which will be very much appreciated by patrons. Hot and cold running water in each bedroom.

The hotel is electric lighted and a powerful searchlight has been placed on top of the dome of the hotel, which will cast its rays over lake, wood and island scenery during the evenings. This is a novel and interesting feature, new to Canada, and one that is very popular at leading resorts in Switzerland.

The bedrooms are larger than the average rooms found in summer hotels (the majority being 14 x 16 feet), are all outside rooms, bright and airy, and the furnishings in keeping with the comforts that are provided by the management throughout. Every room is provided with a large clothespress or closet — a feature that will be appreciated by guests.

The structure is built after the cottage style of architecture and rises to a height of two stories only. On the first floor on entering is found the spacious rotunda and sitting room, also the office. This room is large and will be the favorite spot for "loafing." Large open fireplaces have been provided in the sitting rooms and rotunda, where the log fires will burn when needed on a cool morning or evening in the early or late part of the season. Upstairs, in addition to the suites of bedrooms, will be found ladies' parlors, writing rooms and cozy corners.

The dining room extends from the rotunda to the rear of the building, and is a large, bright room, lighted from both sides, and with a seating capacity for 150 people. The cuisine is under the supervision of an experienced *chef*, and it will be the object of the management to see that the table service is satisfactory to the most fastidious. Arrangements have been made for heating the dining room in cool weather. A smaller dining room is connected with the main dining room for the use of children and nurses or for small evening gatherings or private parties.



15-POUND GRAY TROUT
Caught in Lake of Bays at Norway Point.



GENERAL VIEW OF THE WAWA HOTEL.

Directly in front of the building on the ground floor and second floor are spacious verandas, from which the most picturesque views of lake and island scenery in all directions can be enjoyed by the observer.

Amusements are provided in the way of croquet, tennis, baseball, etc.

The beach at this point within a couple of hundred yards of the hotel is about two thousand feet in length, and is a perfect one for bathing and safe for children. It is a hard, sandy bottom, with a gradual slope to deeper water. This beach is no doubt one of the most attractive pleasures of the resort. A fringe of balsam and pine trees runs along the shore within a few feet of the water and forms a delightful shade for the bathers and those who do not bathe. It is the purpose of the management of this new hotel to offer the maximum of comfort and service at a reasonable rate, and the charges have been made to meet the most modest pocketbook, as well as those wishing more pretentious surroundings.

The Huntsville & Lake of Bays Navigation Company have completed the work on a new and commodious wharf on which they have erected a covered pavilion which will be used for dancing and other forms of amusement. An orchestra will be in attendance during the summer season. This auxiliary to the hotel will be a great boon to the guests, and is placed sufficiently far from the hotel as not to interfere with the quiet and rest of those who wish it. A tri-daily boat service is maintained between Huntsville and the "Wawa," and a double daily mail service.

A special feature in connection with the hotel is the pure spring of clear water that is on the hotel property and from which the hotel supply will be drawn. This water is absolutely pure, as clear as crystal, and is considered one of the best assets of the resort. The hotel is situated on a flat plateau at the foot of a well-wooded bluff rising to a height of about 150 feet, and from whose summit a grand view of the surrounding country can be had. A government road leads to the hotel and offers opportunity to those who desire a means of riding or driving.

Long distance telephone has been installed, with connection to all points on Bell telephone system, also telegraphic connection via Great North Western and Western Union telegraph companies.

A double daily steamer service is operated between Huntsville and the "Wawa." Also a double daily mail service will be maintained.

The hotel is supplied with fresh milk, cream, eggs, poultry and vegetables from its own two-hundred-acre farm.

Rates at the "Wawa" are most reasonable for the service offered, and run from \$2.50 to \$4.00 per day, or \$15.00 to \$25.00 per week, according to location of rooms.

A series of tents with board floors and neatly furnished will be used as an auxiliary to the hotel and comfortable accommodations can be secured at \$2.00 per day.

A boat livery will be operated in connection with the hotel, where the best of canoes, skiffs, sailboats, etc., can be secured at moderate prices.

For further particulars regarding the "Wawa," application should be made between September 15th and June 1st, to J. D. Warde, 112 Union Station, Toronto, Ontario. Between June 1st and September

15th, address all communications to Manager the "Wawa," Norway Point, via Huntsville, Ontario.

Searchlight Excursions Through Fairyland

Fairyland has but recently been discovered. It consists of seven miles of the beautiful Fairy River, with its winding, wooded shore, also the emerald islands and the rugged mainland of Fairy Lake. The land has been there for a long time, but the "searchlight excursion" is the invention of the enterprising steamboat company which operates the boats in this "dreamland," while the "Fairies" are supposed to come from the creative imagination of the nocturnal tourists who follow the flashes as the great searchlight sweeps the shelving shores.

It would be difficult to conceive of a more beautiful setting for a show of this sort. The excursionists take the steamer "Ramona" at Huntsville, sail down the short but beautiful stretch of Fairy Lake, where the light swings from point to point, from island to mainland, showing here a frowning cliff, there the dark wildwood, and yonder an open field and farmhouse, the cattle feeding on a far-off meadow, the sheep sleeping sheltered by the stars. Now, the man who manipulates the light, points it straight ahead and lets it rest on the river which the boat is about to enter. Presently the Locks are reached, by which the "Ramona" reaches the level of the lower lake, and then begins the most interesting part of the trip. The river is all curves and bends, so that without the slightest move of the light the scenery is con-



ON MARY LAKE.

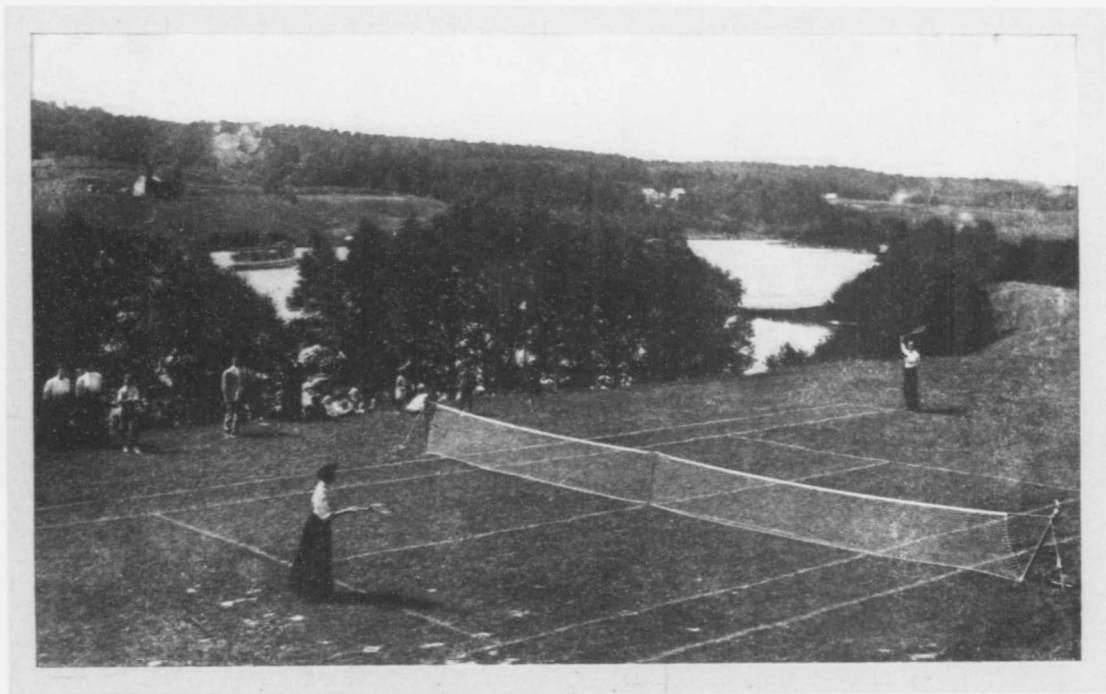


HUNTSVILLE NAVIGATION COMPANY'S STEAMER "ALGONQUIN" PASSING THROUGH THE CANAL BETWEEN PENINSULAR AND FAIRY LAKES.

stantly shifting, the strong light converting the tinselled tops of the taller trees to real lace, and the lower foliage and ferns that shade the shore, to silken fringe, ostrich feathers or fantastic filigree, according to the fall of light and the imagination of the excursionist.

This reach of the river takes the boat to Mary Lake, a charming sheet of water dotted with islands, whose mainland holds some wild, rugged scenes, also a number of picturesque hotels where tourists are taken, and where sometimes the "Ramona" touches for refreshments or a dance.

Mary Lake may also be reached direct through Utterson, a station on the Grand Trunk about ten miles south of Huntsville. It is just two miles from Utterson to Port Sydney, situated at the extreme south end of the lake, at which point first-class accommodation may be obtained. Resorts here are just close enough together to create pleasant social intercourse. While the islands, bays and hills are smaller in Mary Lake than in the larger sheets of water, the scenery is beautiful, the small islands abounding with wild berries, flowers, etc., and small game is plentiful. Fishing also is exceptionally good, black bass being caught in large numbers. Clyffe House, located at Port Sydney, has undergone complete overhauling this year so as to provide accommodation for 100 guests. New bath and boat houses have been constructed, also a large dancing pavilion. A bus line is operated between Utterson and Port Sydney.



THE TENNIS GROUNDS AT DEERHURST—PENINSULAR LAKE.

Having completed the circle of Mary Lake, the swan-like steamer threads her way back up the beautiful stream, passes the Locks, recrosses Fairy Lake, the liquid music of the band on board melting away in the wilderness, and ties up at Huntsville, the real gateway to Fairyland.

Improved Boat Service

During the past couple of years the Huntsville & Lake of Bays Navigation Company have greatly improved their equipment on these lakes, and are better prepared than ever to take care of the ever-increasing number of tourists who visit this ideal territory.

Four boats, the "Algonquin," "Iroquois," "Ramona" and "Mohawk," have been added to their fleet. The first two named have a speed of sixteen miles an hour, and are unquestionably as fine as any steamers on inland waters. They are equipped for carrying 500 passengers each, lighted with electricity, and each equipped with a powerful searchlight, which adds greatly to the pleasure and interest of trips by moonlight about the lakes. The "Ramona" and "Mohawk," also lighted throughout with electricity and carrying powerful searchlights, are of lighter draft, for the river and coast service. An attentive stewardess is employed, and a first-class meal or luncheon and refreshment service is operated on the larger boats. These boats also have large cold storage refrigerators for carrying meats, fruits, vegetables, etc., for cottagers about the lakes.

Close connection is made with the through trains of the Grand Trunk Railway System at Huntsville by the "Algonquin," which connects with the "Iroquois" and "Mohawk" for Lake of Bays service, and the "Ramona" for Grunwald and Mary Lake points, including Port Sydney. The addition of these fine steamers to the fleet enables passengers to reach their destination on the Lake of Bays much earlier than heretofore.

Special rates are in effect during the summer for tourists desiring the sail around the lakes.

The weekly moonlight excursions on the big boats have proved so popular that the management have determined to run them nightly on the lesser lakes and weekly through to the Lake of Bays. The excursion boats carry a band and serve light refreshments.

Tourists wishing to make a trip between Lake of Bays and Algonquin Park (via Hollow Lake) will find competent and reliable guides for the trip available. Hollow Lake is noted for its most excellent trout fishing.

Fishing

High up in the rugged hills, 200 feet above the Lake of Bays, lies Hollow Lake, to which one man has gone for seventeen years, and from which he has taken some of the largest trout ever taken from the Northern lakes. Mr. James Russell, who has lived at Hollow Lake for twenty-seven years, furnishes the following information:

Fishing at Hollow Lake and Vicinity

Trout only are caught in these waters.

Species: Gray trout, 5 to 35 lbs.; salmon trout, 1 to 5 lbs.; brook trout (square tails), up to 5 lbs.



INTERIOR VIEWS—WAWA HOTEL.

Seasons

May, early June— Brook trout in streams; flies and minnows best bait. Salmon trout in lakes; minnows used exclusively. Casting in the streams and toward shores of lakes is adapted to this month. Trolling with light sinkers in shallow water, however, gives best results. Use plain gimp hooks with No. 3 or 4 silk lines. No flies or mosquitoes.

Late June— Fly fishing in rapid running rivers fair. Creeks and streams are not good; water too warm and all species have sought the cold, deep water of the lakes. For this month use trolling outfits only, viz.: medium-sized Archer spinner with minnows, heavy sinkers and No. 2 or 3 National silk lines 200 feet long; same length Cuttyhunk lines may be used also. Strong tip steel rods preferred. Head nets and fly oil essential this month for crossing trails.

July— Same as for late June, except there are no flies or mosquitoes.

August— Same as July. During this month, fly casting may be indulged in for trout in the lakes. Silver doctor or gray hackle are good.

September— Same as August, but trout rise freely to the fly in lakes and streams.

General Remarks

Light casting outfits good only in May.

In May and early June rubber boots are convenient.

July, August and September, canvas rubber-soled shoes are best.

Hollow Lake, because of its altitude, is one of the very best speckled or brook trout lakes in the Highlands.

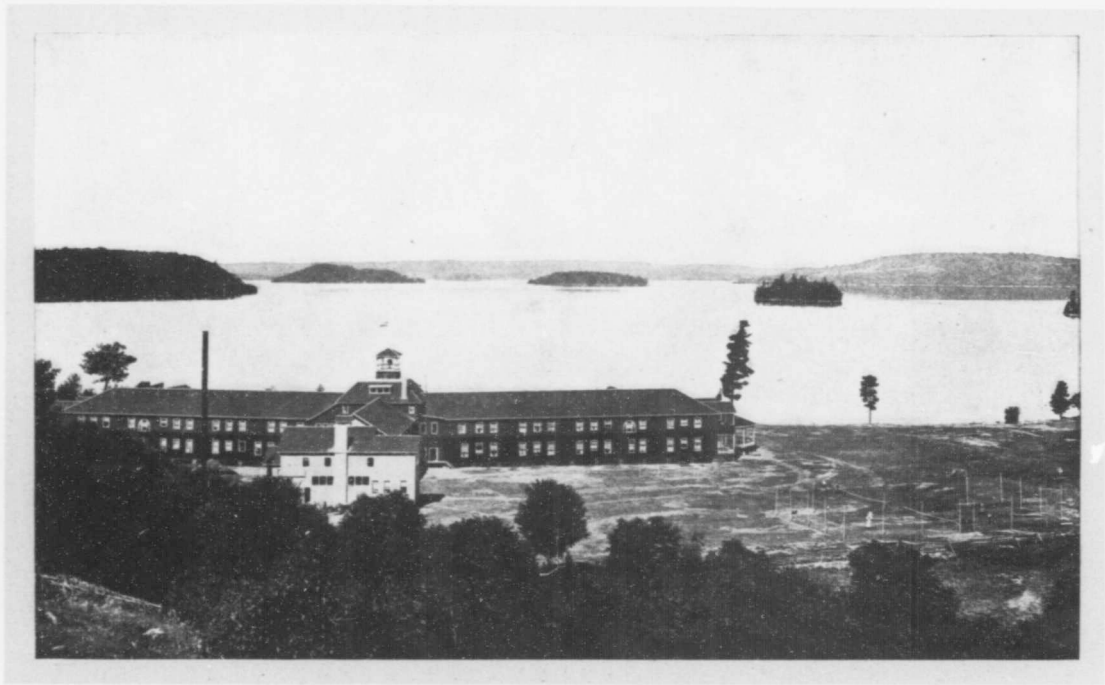
There is good fishing in almost any one of the thousand lakes in the Northern wilds. There seems to be no end of the supply, for when one pool is exhausted of its speckled beauties, it only needs a change of position to another spot, and up they rise with their painted sides glistening in the sunlight. On the lower lakes, such as the Lake of Bays itself, passengers on the steamers can see the trout jumping in all directions, and a morning's fishing at any point on this lake will warm the heart of the most ardent follower of Izaak Walton. Salmon trout in season are most successfully caught with the troll in the deep waters of these granite basins.

Boys' Camps

Although the Lake of Bays District has not as yet been discovered by any organizer of boys' camps, it undoubtedly soon will be, as it possesses advantages equal or superior to many other districts which have long been exploited. The accessibility of the Lake of Bays District, the ease with which the camp may be conducted, the plenitude of farm and dairy products, the facilities for safe bathing, boating, fishing, etc., all contribute to the desirable nature of this section for the purpose referred to.

For the Hunter

Partridge and duck, as well as other species of game birds, are plentiful throughout the district. To assure success in partridge hunting, dogs are a necessity; guides, however, may be procured who have hunting dogs. Deer, bear and other large game may also be found in abundance, both in this and adjacent districts. During the last season more than 5,000 hunters went up into this and contiguous districts, and the



LOOKING OUT OVER THE LAKE FROM ELEVATION BACK OF THE WAWA HOTEL.

success which the different parties had was all that could be desired, one of the express companies alone transporting nearly 4,000 carcasses from this northern section during the open season.

Owing to the Lake of Bays District abutting on the Algonquin National Park (a Government game reservation of some 2,000,000 acres), there will always be good hunting in the district, making it a most desirable place for locating permanent hunters' camps, cottages, etc.

Campers can get supplies from Huntsville, and the guides will supply boats, canoes, etc., at moderate rates. Guides may be secured upon application to the Huntsville & Lake of Bays Navigation Co., Huntsville, Ont. If the ideal of a pleasure-seeker is a camping life, fairy-like spots in secluded nooks among the woodland shores are waiting to be taken possession of; for those whose tastes tend to the comforts obtained in hotel life, there are modern and well-appointed hostleries at several of the different points at which the steamers touch.

As a Health Resort

For invalids and those suffering from malaria or hay fever, this region is beyond compare. Being situated at an altitude of more than 1,000 feet above sea-level, and over 300 feet above the level of Muskoka Lakes, the air is found to be most invigorating and pure, and its efficacy is pronounced. The many thousands of people who suffer from that most annoying of ailments, "hay fever," will find immediate relief and perfect immunity from the disease at any of the points in the Huntsville and Lake of Bays region. This is also the locality where the toiler can find rest and recuperate his lost vitality and build up health and strength with pure air and serene and happy surroundings.

Owing to the fact that this district, though situated among the wildness of Nature, is in close proximity to civilization and within easy reach, makes it a most desirable place for people to come early in the season and remain late in the fall. The month of September is one of the most beautiful in the "Highlands of Ontario."

The waters of the Lake of Bays District are perfectly soft and pure, no traces of lime or alkali being noticeable. Springs abound throughout the district which pour forth water that has been analyzed and found to compare with the purest of samples.

Principal Points

Huntsville, the starting point for the Lake of Bays steamer route, has a population of 2,500, good hotel accommodation, long distance Bell telephone and telegraph and two chartered banks, and is in the center of one of the most beautiful districts of Northern Ontario. Is on the line of the Grand Trunk Railway System. Double daily mail service between Huntsville and all principal points on the lakes during the summer season.

Canoes and boats can be rented or purchased here by tourists or cottagers desiring them, and supplies of all kinds can be had and forwarded daily by boat.

DEERHURST, where is situated a large and roomy hotel on a high bluff overlooking Peninsular Lake. Good boating and fishing, and a charming place to spend the summer. Steamers call daily. P. O. address, Huntsville.

RONVILLE SUMMER RESORT. P. O. address, Fox Point, Ont. Ten-Mile Creek and Ten-Mile Bay, about one mile from this point, have excellent salmon trout fishing. The trolling in Ten-Mile Bay in the shadow of the high and rocky bluff that lines the shore, is unexcelled; this is one of the best fishing grounds of the district. First-class hotel at this point, where tourists and pleasure-seekers are made comfortable and happy. Very fine beach. Telegraph connection with Huntsville.

PORT CUNNINGTON, on Lake of Bays. An ideal spot for rest. An exceptionally fine bathing beach, and one of the oldest established and most popular resorts on the lakes. During this year this resort has been considerably enlarged and improved to meet increasing demands for accommodation and telephone connection has been installed. Milk, cream, and garden produce supplied in abundance from own farm. Address, H. B. Cunningham, Fox Point, Ont.

GRUNWALD RESORT, on Mary Lake, beautifully situated and forest-locked, is well equipped and modern in its appointments. It is reached to and from Huntsville twice daily during the season. P. O. address, Huntsville, Ont.

BAYSVILLE. A first-class fishing point — speckled trout. Has two hotels and boarding houses with good accommodations.

DORSET. Capital place, with good hotel accommodations; also starting point for the sportsman's paradise — Hollow Lake and vicinity. The Indian name for this lake is *Kahweamhegewagamag*. It is one of the finest speckled trout fishing grounds north of Toronto. Telephone and telegraph connection with Huntsville.

Large new hotel, "Iroquois," has accommodation for 75 guests. Open year round. Gas, bath, modern lavatories and all conveniences. Well conducted and most accommodating management. Rigs supplied for trip to Hollow Lake.

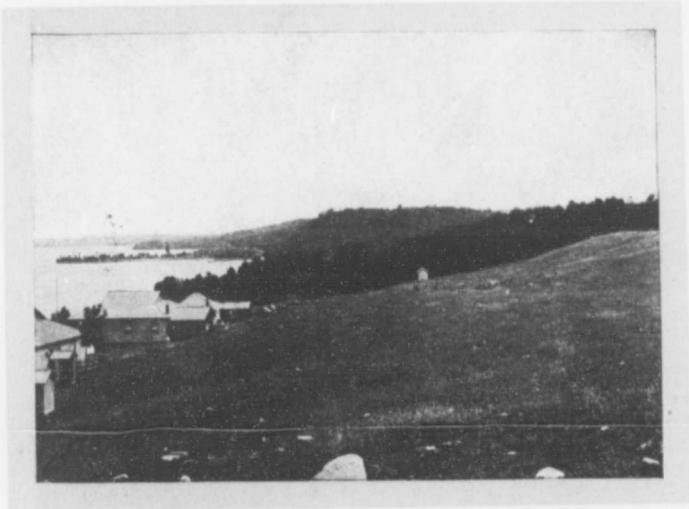
DWIGHT. Also situated on the Lake of Bays; has become the favorite pleasure ground for a number of Rochester, N. Y., families, who each year take up their abode in this delightful retreat. Private cottages are in evidence here. There are also good boarding houses for the accommodation of the tourist travel. Telegraph and telephone connection with Huntsville.

POINT IDEAL. Mr. Egbert Boothby, proprietor. Is also one of the most popular resorts on the Lake of Bays. Located directly on line of the steamers; double daily mail service. Table bountifully supplied with cream, milk, etc., from own farm; also choice meat and vegetables. This resort was opened in 1907, is one of the most beautiful spots on the entire lakes and is destined to become very popular with all who desire rest and quiet. This season additional accommodation has been provided and modern plumbing, waterworks and telephone connection installed. Surroundings exceptionally fine as to scenery; good bathing beach, splendid fishing. Comfortable tents will be provided for those to whom camping-out appeals. Address, Point Ideal, Lake of Bays, Fox Point, Ont.

Fairypoint Inn on Fairy Lake is being much enlarged and improved for 1909 business and when completed will accommodate 125 guests and be modern in every particular, with hot and cold water throughout all

bedrooms. Fairypoint is the first calling place on the steamer line after leaving Huntsville. There is a beautiful high sandy beach 3,000 feet in length, nine-hole golf links, croquet and baseball grounds. Also a large dancing pavilion. The situation is ideal. Rates \$10.00 to \$14.00 per week; \$2.00 per day. A. C. Smith, proprietor.

On Peninsular Lake there are numerous stopping places which are



VIEW FROM NORWAY POINT.

picturesquely situated, and with first-class accommodation for guests. Fox Point, Grove Avenue, Garry Owen, Park Place, Bay View Farm and Hemlocks are also on the steamer route.

Edgewood, A. F. Bailey, proprietor. This resort is nicely located directly on steamer line. It has an excellent bathing beach, good boating, fishing and telephone connection. The table is supplied with cream, milk, vegetables, etc., from their own farm.

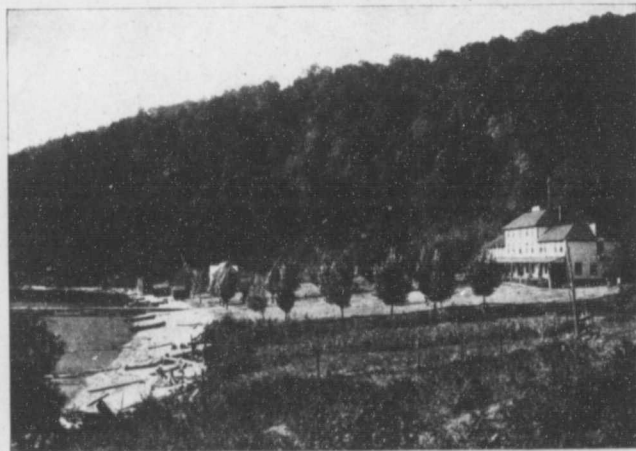
Grand View, M. Cookson, proprietor. This is a new resort just completed this year on Fairy Lake. It has accommodation for 65 guests and is situated about three miles from Huntsville, 100 feet above lake level, with excellent boating, fishing and bathing. It is on the steamer route plying between Huntsville and Lake of Bays, steamers passing three times daily. A farm is operated in connection therewith so that guests have the assurance of the best of everything in the way of produce. House opens June 1st. Rates \$1.25 per day or \$8.00 to \$9.00 per week. Special rates for children and for long periods.

Cottage Sites

There are innumerable choice sites available in the Lake of Bays region for those who desire to erect summer homes, camps or cottages.



A WEEK'S HUNT IN THE LAKE OF BAYS DISTRICT, "HIGHLANDS OF ONTARIO,"
DURING THE EARLY PART OF NOVEMBER.



RONVILLE RESORT, FOX POINT.

Besides those already enumerated might be mentioned the following: Bigwin Islands, comprising about 550 acres, beautifully wooded with timber, both hard and soft woods, and located in the most picturesque part of Lake of Bays, in close proximity to Norway Point, Port Cunningham, Edgewood, Grove Avenue and other resorts. Building sites are for sale on this island in lots of any size. For further particulars address the Huntsville & Lake of Bays Nav. Co., Ltd., Huntsville, Ont.

How to Get There

From points in the South, passengers reach the Grand Trunk Railway either by way of Buffalo and Niagara Falls or by the way of Detroit. From each of these points the trains of the Grand Trunk Railway convey the passengers to Huntsville.

In the West, from Chicago and points in the Western States, passengers are carried over the main line of this great system by way of Port Huron and Toronto, passing through some of the principal cities of the United States and the western part of Ontario.

From Buffalo, trains are run solid over the Lehigh Valley and Grand Trunk Railways, crossing the Grand Trunk's single-arch double-track steel bridge over the Niagara Gorge.

From Toronto, fast express trains are run solid to Huntsville, the starting point for the steamer trip to any of the lakes in this district.

Passengers from Eastern points, such as Quebec, Portland and intermediate stations, proceed via the main line of the Grand Trunk Railway through Montreal to Toronto, and those from Boston and all New England points by connecting lines via the same route, and thence on to Huntsville by the Grand Trunk System.

Tourists from the Maritime Provinces reach the Grand Trunk by the Intercolonial Railway via Montreal, and proceed over the main line as described above.

From points East and South of Buffalo, including the states of New York, Pennsylvania, West Virginia, Maryland, etc., the route is by way of Niagara Falls, thence Grand Trunk Railway.

From Huntsville and the Lake of Bays District, the tourist, if he so desires, may return by way of Parry Sound and the 30,000 Islands of the Georgian Bay. He may either proceed from Huntsville north by the Grand Trunk Railway System to Scotia Junction and thence to Parry Sound, or he may return to Muskoka Wharf, where the steamers of the Muskoka Navigation Co. will carry him to Port Cockburn, combining one of the most delightful trips of this northern country.

Customs Arrangements

Persons visiting Canada for a limited time, for pleasure, may bring with them such guns, fishing tackle, tents, camp equipment, cooking utensils, kodaks, bicycles, etc., as they may require for their own use, upon reporting same to the Customs officer at port of entry, depositing with him a sum of money equal to the duty, subject to a refund of this amount if the articles are exported within six months, or they may be forwarded in bond to any point in Canada where a Customs officer is stationed, where the same regulations as above must be complied with.

Fishing Notice

Any non-resident of the Province of Ontario desiring to angle in the waters of the Province must first obtain an angling permit, the fee for which shall be \$2.00; such permit shall be good for a period of three months, and must be produced by the person angling when required to do so by the Overseer or other official authority. The holder of such permit shall be entitled to take with him when leaving the Province the lawful catch of two days' fishing, when the coupon accompanying the permit is attached to the receptacle containing the fish, otherwise the fish will be liable to confiscation.

Permits may be obtained from any of the Game Wardens or the Chief Game Warden, Legislative Buildings, Toronto.

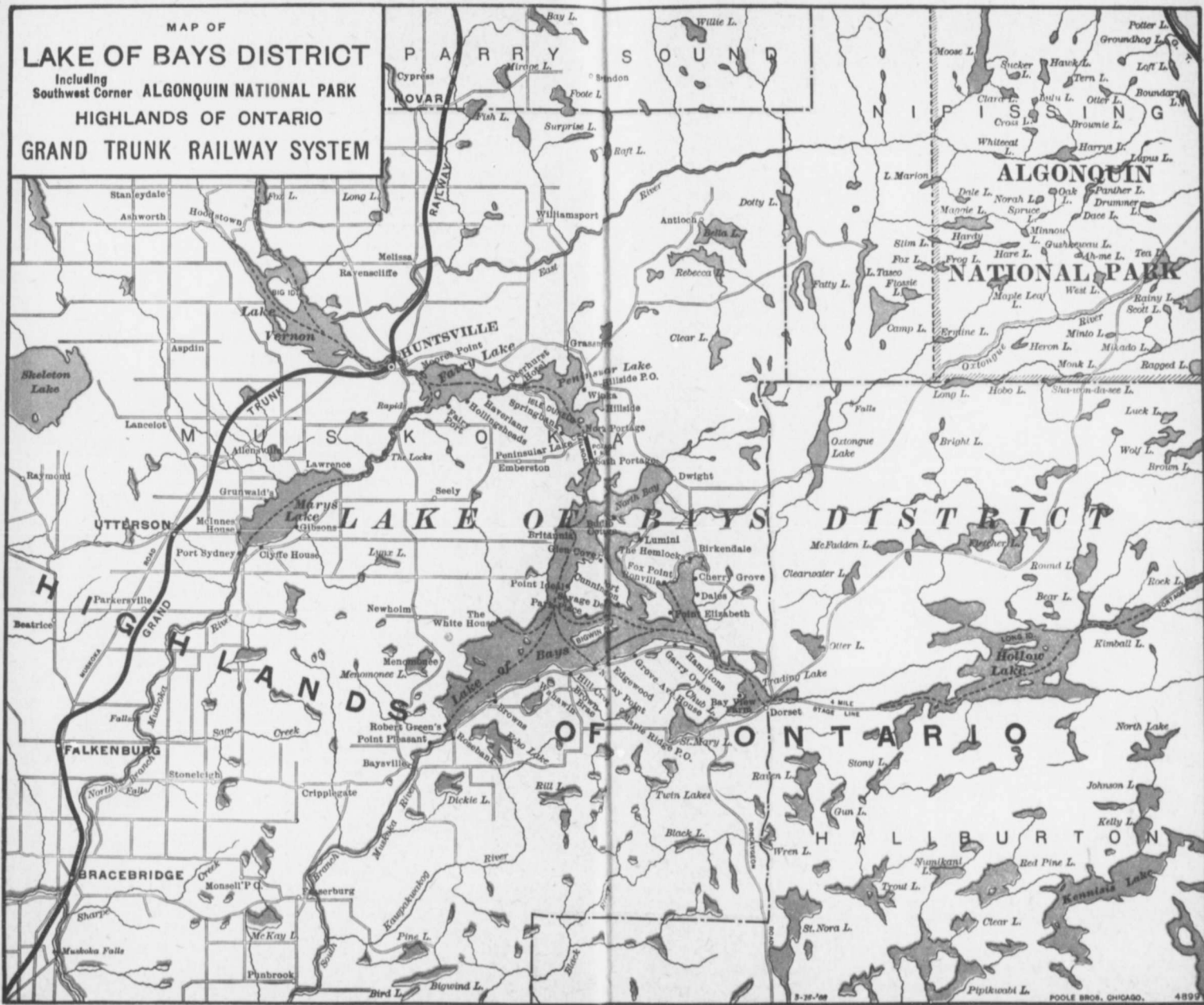
Hotels and Boarding Houses
Season 1909

P. O. ADDRESS	NAME OF HOTEL OR RESORT	PROPRIETOR	ACCOMMODATION
Baysville..... Ont.	White House.....	J. Aldrich.....	40
"....."	Pulford House.....	A. J. Henderson.....	70
"....."	Idlwyld.....	Mrs. R. Green.....	25
"....."	Rosebank Farm.....	Ed. H. Deakin.....	15
Birkendale.....	The Hemlocks.....	W. E. Irwin.....	30
"....."	Birkendale Summer Resort.....	W. G. Robson.....	20
"....."	Sea Breeze Cottage.....	Mrs. W. G. Burk.....	30
Brown's Brae.....	Fairview Farm.....	Jno. E. Brown.....	18
"....."	Grand View Farm.....	A. Tenberry.....	15
Dorset.....	Iroquois Hotel.....	D. McIlroy.....	75
"....."	Alvira.....	E. A. Langford.....	40
"....."	Garry Owen.....	S. B. Ball.....	20
"....."	Bay View Farm.....	W. C. Sparks, Sr.....	20
"....."	The Maples.....	Gid Burk.....	15
"....."	Mountain Trout House (Hollow Lake).....	Jas. Russell.....	20
Dwight.....	Gouldie House.....	N. G. Gouldie.....	50
"....."	Nor Loch Lodge.....	Miss Pauline Morton.....	35
Fox Point.....	Edgewood.....	A. F. Bailey.....	30
"....."	Park Place.....	P. B. Walmsley.....	15
"....."	Island View Cottage.....	Thos. Salmon.....	15
"....."	Grove Avenue.....	J. B. Robertson.....	30
"....."	Port Cunnington Resort.....	B. H. Cunnington.....	50
"....."	Point Ideal.....	Egbert Boothby.....	35
"....."	Lumina.....	Chas. H. Cook.....	10
"....."	Ronville.....	C. J. C. Crump.....	100
Huntsville.....	Britannia.....	C. R. Rumball.....	100
"....."	The Grunwald (Mary Lake).....	The Manager.....	100
"....."	Fairy Port Inn.....	A. C. Smith.....	30
"....."	Haverland.....	E. Roe.....	40
"....."	Riverside.....	Mrs. McGregor.....	20
"....."	The Hollingshead.....	Mrs. Wm. Hollingshead.....	25
"....."	Deerhurst.....	C. E. Waterhouse.....	75
"....."	Hotel Kent.....	W. H. Davis.....	50
"....."	Bonnie Brae.....	W. D. Forrest.....	20
Norway Point (via Huntsville), Ont.	The Wawa.....	Canada Railway News Co.....	250
Port Sydney..... Ont.	The Balsams.....	Mrs. H. G. Ladell.....	35
"....."	Chester House.....	J. Kimball.....	25
"....."	River View.....	E. A. Watson.....	20
"....."	The Belleview.....	Arthur Clarke.....	50
"....."	Cliff House.....	Jenner Bros.....	35

Rates, \$1.00 to \$3.00 per day: \$6.00 and up per week.

LAKE OF BAYS DISTRICT
PROVINCE OF ONTARIO
GRAND TRUNK RAILWAY SYSTEM

MAP OF
LAKE OF BAYS DISTRICT
 Including
 Southwest Corner **ALGONQUIN NATIONAL PARK**
 HIGHLANDS OF ONTARIO
 GRAND TRUNK RAILWAY SYSTEM



wa
wh
mc
do
pe
lav
pe
fisl

Ge

f
Ba

Bir

Brc

Do
:
:
:
:

Dw

For

Hu

No
l
Po

For further particulars regarding routes, rates, maps, literature and other information pertaining to the district, apply to the nearest Grand Trunk Railway agency, a list of which is given below.

AGENCIES

- Alexandria Bay, N.Y.**...Cornwall Bros....Ticket Agents.
Baltimore, Md......Theo. H. Diener & Co., Ticket Agents, 217 E. Baltimore St.
Boston, Mass......E. H. Boynton...New England Passenger Agent, 350 Washington St.
Buffalo, N. Y......H. M. Morgan...City Pass'r and Tkt. Agent, 285 Main St. (Ellicott Sq. Bldg.)
Chicago, Ill......J. H. Burgis....City Passenger and Ticket Agent, 249 Clark St., cor. Jackson Boulevard.
Cortland, N. Y......D. P. Drewery...Traveling Passenger Agent, 6 Burgess Block.
Detroit, Mich......Geo. W. Watson...City Passenger and Ticket Agent, 124 Woodward Ave.
Grand Rapids, Mich....C. A. Justin....City Passenger and Ticket Agent, 11 T. Ry. Station.
Hamilton, Ont......C. E. Morgan....City Passenger and Ticket Agent, 11 James St. North.
Kansas City, Mo......P. H. Vair....Traveling Passenger Agent, 327 Shedley Bldg.
Kingston, Ont......J. P. Hanley....City Passenger and Ticket Agent.
London, Ont......E. de la Hooke...City Pass'r and Tkt. Agt., cor. Richmond and Dundas Streets.
Los Angeles, Cal.....W. H. Bullen....Pacific Coast Agent, 302 Wilcox Bldg.
Minneapolis, Minn....W. J. Gilkerson...Traveling Passenger Agent, 715 Metropolitan Bldg. (formerly Guaranty Bldg.)
Montreal, Que......{ J. Quinlan....District Passenger Agent, Bonaventure Station.
 { W. H. Clancy...City Passenger and Ticket Agent, 130 St. James St.
Mt. Clemens, Mich....Casper Cizek....City Passenger and Ticket Agent, 12 South Gratiot Ave.
New York, N. Y......F. P. Dwyer....General Agent Pass'r Dept., Railway Exchange, 290 Broadway.
Niagara Falls, Ont....G. R. Major....Ticket Agent, Clifton House.
Niagara Falls, N. Y....W. J. Hamilton...Ticket Agent, No. 1 Falls St.
Ogdensburg, N. Y.....Geo. S. Meagher, Ticket Agent, 55 State St.
Ottawa, Ont......Percy M. Buttler...City Passenger and Ticket Agent, Russek House Block, cor. Sparks and Eglis Sts.
Peterboro, Ont......W. Bunton....City Passenger and Ticket Agent.
Pittsburg, Pa......W. Robinson....Traveling Passenger Agent, 506 Park Building.
Port Huron, Mich.....C. R. Clarke....Ticket Agent, G. T. Ry. Station.
Portland, Me......C. E. Tenny....Passenger Agent, G. T. Ry. Station.
Quebec, Que......Geo. H. Stott....C. P. & T. A., cor. St. Anne and Du Fort Sts., and Ferry Landing, Dalhousie St.
Saginaw, Mich......H. E. Quick....Passenger Agent, G. T. Ry. Station.
San Francisco, Cal....F. H. Lord....Agent, 399 Monadnock Bldg.
Sherbrooke, Que.....C. H. Foss....City Passenger and Ticket Agent, 2 Wellington St.
Toronto, Ont......J. D. McDonald...District Passenger Agent, Union Station.
 C. E. Horning...City Passenger and Ticket Agent, northwest corner King and Yonge Streets.
Winnipeg, Man.....A. E. Duff....General Agent Pass'r Dept., 260 Portage Ave.

EUROPEAN TRAFFIC DEPARTMENT

- F. C. Salter, European Traffic Manager, 20 Water Street, Liverpool, Eng.
Belfast, Ireland.....Stephens & Walkington, No. 8 Victoria Street.
Birmingham, Eng....Morison, Polleffen & Blair, No. 6 Victoria Square.
Glasgow, Scotland...J. M. Walker....General Agent, 75 Union Street.
Liverpool, Eng......Wm. Cuthbertson...General Assistant, 20 Water Street.
London, E. C., Eng....F. G. English....Acting General Agent, 44-45-46 Leadenhall Street.
Paris, France.....Pitt & Scott....Ticket Agents, 47 Rue Cambon.
Sheffield, Eng......J. W. Dawson....Agent, No. 7 Haymarket.

OR TO

HUNTSVILLE & LAKE OF BAYS NAVIGATION CO., Huntsville, Ontario.

CHAS. M. HAYS,
Second Vice-Pres't & Gen'l Mgr.,
MONTREAL.

GEO. W. VAUX,
Gen'l Pass'r Agent,
MONTREAL.

W. E. DAVIS,
Pass'r Traffic Mgr.,
MONTREAL.

H. G. ELLIOTT,
First Asst. Gen'l Pass'r Agt.,
MONTREAL.

G. T. BELL,
Assistant Pass'r Traffic Mgr.,
MONTREAL.

W. S. COOKSON,
Asst. Gen'l Pass'r Agent,
CHICAGO, ILL.

**GRAND
TRUNK
RAILWAY
SYSTEM**