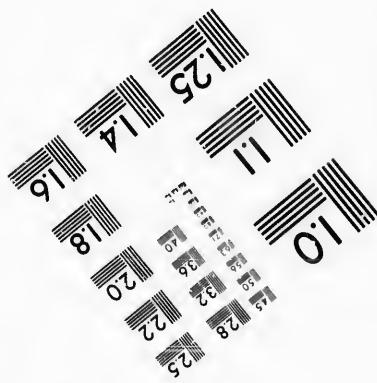
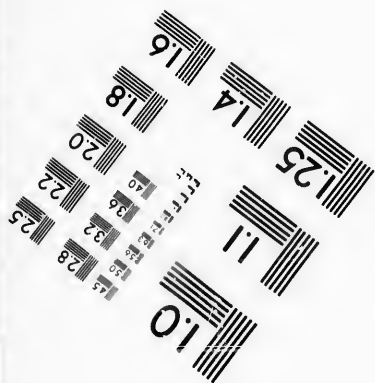
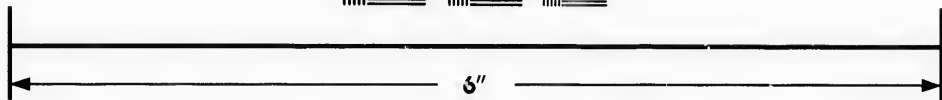
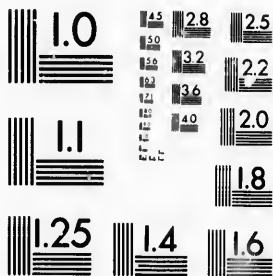


**IMAGE EVALUATION
TEST TARGET (MT-3)**



**Photographic
Sciences
Corporation**

23 WEST MAIN STREET
WEBSTER, N.Y. 14580
(716) 872-4503

**CIHM/ICMH
Microfiche
Series.**

**CIHM/ICMH
Collection de
microfiches.**



Canadian Institute for Historical Microreproductions / Institut canadien de microreproductions historiques

© 1987

Technical and Bibliographic Notes/Notes techniques et bibliographiques

The Institute has attempted to obtain the best original copy available for filming. Features of this copy which may be bibliographically unique, which may alter any of the images in the reproduction, or which may significantly change the usual method of filming, are checked below.

L'Institut a microfilmé le meilleur exemplaire qu'il lui a été possible de se procurer. Les détails de cet exemplaire qui sont peut-être uniques du point de vue bibliographique, qui peuvent modifier une image reproduite, ou qui peuvent exiger une modification dans la méthode normale de filmage sont indiqués ci-dessous.

- Coloured covers/
Couverture de couleur
- Covers damaged/
Couverture endommagée
- Covers restored and/or laminated/
Couverture restaurée et/ou pelliculée
- Cover title missing/
Le titre de couverture manque
- Coloured maps/
Cartes géographiques en couleur
- Coloured ink (i.e. other than blue or black)/
Encre de couleur (i.e. autre que bleue ou noire)
- Coloured plates and/or illustrations/
Planches et/ou illustrations en couleur
- Bound with other material/
Relié avec d'autres documents
- Tight binding may cause shadows or distortion
along interior margin/
La reliure serrée peut causer de l'ombre ou de la
distorsion le long de la marge intérieure
- Blank leaves added during restoration may
appear within the text. Whenever possible, these
have been omitted from filming/
Il se peut que certaines pages blanches ajoutées
lors d'une restauration apparaissent dans le texte,
mais, lorsque cela était possible, ces pages n'ont
pas été filmées.
- Additional comments:/
Commentaires supplémentaires:

- Coloured pages/
Pages de couleur
- Pages damaged/
Pages endommagées
- Pages restored and/or laminated/
Pages restaurées et/ou pelliculées
- Pages discoloured, stained or foxed/
Pages décolorées, tachetées ou piquées
- Pages detached/
Pages détachées
- Showthrough/
Transparence
- Quality of print varies/
Qualité inégale de l'impression
- Includes supplementary material/
Comprend du matériel supplémentaire
- Only edition available/
Seule édition disponible
- Pages wholly or partially obscured by errata
slips, tissues, etc., have been refilmed to
ensure the best possible image/
Les pages totalement ou partiellement
obscurcies par un feuillet d'errata, une pelure,
etc., ont été filmées à nouveau de façon à
obtenir la meilleure image possible.

This item is filmed at the reduction ratio checked below/
Ce document est filmé au taux de réduction indiqué ci-dessous.

10X	12X	14X	16X	18X	20X	22X	24X	26X	28X	30X	32X
					/						

The copy filmed here has been reproduced thanks to the generosity of:

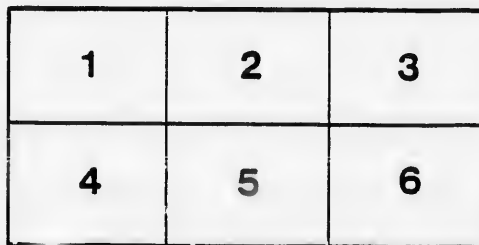
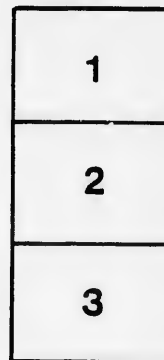
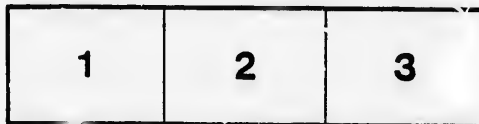
D. B. Weldon Library
University of Western Ontario
(Regional History Room)

The images appearing here are the best quality possible considering the condition and legibility of the original copy and in keeping with the filming contract specifications.

Original copies in printed paper covers are filmed beginning with the front cover and ending on the last page with a printed or illustrated impression, or the back cover when appropriate. All other original copies are filmed beginning on the first page with a printed or illustrated impression, and ending on the last page with a printed or illustrated impression.

The last recorded frame on each microfiche shell contains the symbol \rightarrow (meaning "CONTINUED"), or the symbol ∇ (meaning "END"), whichever applies.

Maps, plates, charts, etc., may be filmed at different reduction ratios. Those too large to be entirely included in one exposure are filmed beginning in the upper left hand corner, left to right and top to bottom, as many frames as required. The following diagrams illustrate the method:



L'exemplaire filmé fut reproduit grâce à la générosité de:

D. B. Weldon Library
University of Western Ontario
(Regional History Room)

Les images suivantes ont été reproduites avec le plus grand soin, compte tenu de la condition et de la netteté de l'exemplaire filmé, et en conformité avec les conditions du contrat de filmage.

Les exemplaires originaux dont la couverture en papier est imprimée sont filmés en commençant par le premier plat et en terminant soit par la dernière page qui comporte une empreinte d'impression ou d'illustration, soit par le second plat, selon le cas. Tous les autres exemplaires originaux sont filmés en commençant par la première page qui comporte une empreinte d'impression ou d'illustration et en terminant par la dernière page qui comporte une telle empreinte.

Un des symboles suivants apparaîtra sur la dernière image de chaque microfiche, selon le cas: le symbole \rightarrow signifie "A SUIVRE", le symbole ∇ signifie "FIN".

Les cartes, planches, tableaux, etc., peuvent être filmés à des taux de réduction différents. Lorsque le document est trop grand pour être reproduit en un seul cliché, il est filmé à partir de l'angle supérieur gauche, de gauche à droite, et de haut en bas, en prenant le nombre d'images nécessaire. Les diagrammes suivants illustrent la méthode.

Chas. F. ...

LIST OF VOTERS

FOR THE

TOWN OF STRATHROY

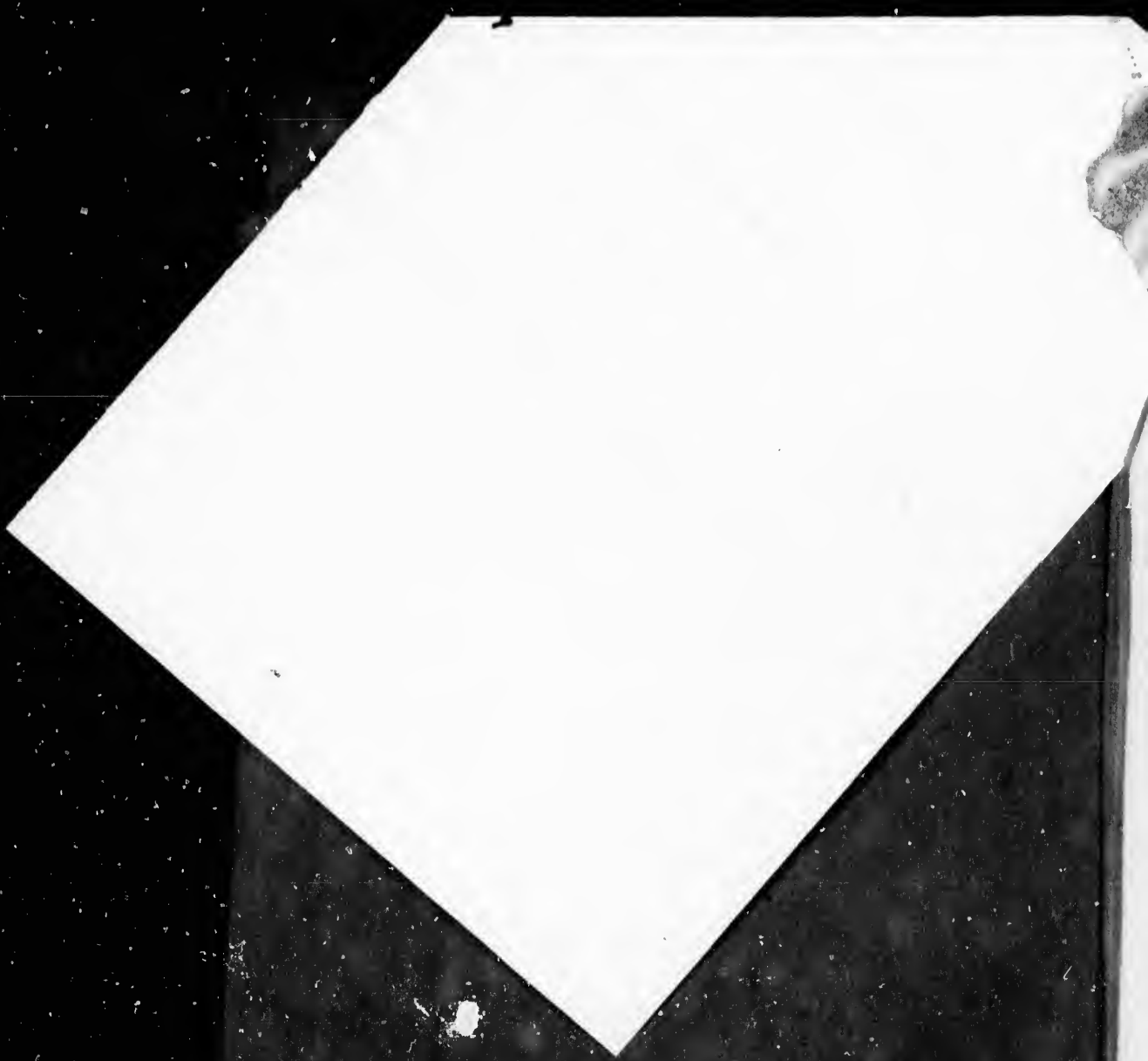
FOR THE

YEAR 1882.

STRATHROY, ONT. :

"THE AGE" BOOK AND JOB PRINTING HOUSE, FRONT STREET.

1882



LIST OF VOTERS
FOR THE
TOWN OF STRATHROY

FOR THE
YEAR 1882.

STRATHROY, ONT. :
" THE AGE " BOOK AND JOB PRINTING HOUSE, FRONT STREET.

1882.

SCHEDULE OF POST OFFICES.

- | | |
|---|---|
| <ol style="list-style-type: none"> 1. STRATHROY. 2. ADELAIDE. 3. NAPIER. 4. LONDON. 5. PETROLIA. 6. EXETER. 7. THOROLD. 8. INGERSOLL. 9. NEWBURY. 10. LOBO. | <ol style="list-style-type: none"> 11. MORAY. 12. ARKONA. 13. MELBOURNE. 14. BRANTFORD. 15. TORONTO. 16. SARNIA. 17. LOVELL. 18. WATFORD. 19. GRIMSBY. 20. OIL SPRINGS. |
|---|---|
21. CHATHAM.

TO

Compr
Ric

Roll No.	
11	Arr
J 15	Au
J 19	Asl
J 30	Arr
J 49	Bee
52	Bur
J 75	Bo
79	Bal
J 82	Bat
578	Bu
913	Ber
128	Cal
129	Cal
131	Cas
J 132	Car
J 133	Car
J 134	Cur
J 135	Cl
136	Cl
J 141	Ch
J 142	Coc
147	Car
160	Cor
204	Cle
205	Cri
136	Car
211	Da
J 214	Du
215	Du
218	Da

VOTERS' LIST, 1882, TOWN OF STRATHROY.

POLLING SUB-DIVISION NO. 1,

Comprising all that part of the Town lying west of McKellar and Richmond Streets, and south of the road allowance between 4th and 5th concessions of Adelaide. Polling place at the Maitland Street School House.

Roll No.	NAME.	Street or Concession.	Number of Lot or Part Lot.	Other Desc'p'n	○
11	Armstrong, J. W.	Sydenham place	13, 14	F	16
J 15	Auld, Adam	south Albert	23	F	1
J 19	Ashwell, George	J & W survey	28, 30	F	1
J 30	Armstrong, W. E.	con 5	part 21	F	1
J 49	Beer, Jacob	con 10	part 10, 13	F	1
52	Bundy, W. H.	w Milner	part 1	F	1
J 75	Bowley, Jas. D.	J & W survey	40, 41, 42	H	1
79	Baker, William	s Albert	part 25	H	1
J 82	Bateman, T. H.	Corneil survey	part 7	H	1
578	Buttery, Wm	s Albert	3	F	1
913	Bentley, Wm.	S & K survey, w of 10	5, 6, 7, 8	F	1
128	Calcut, John	Armstrong's sy	22	F	1
129	Calcut, John A.	Armstrong's sy	25, 26	H	1
131	Castle, Joseph	Armstrong's sy	7, 8, 9, 10	F	1
J 132	Cain, William	e Oak Avenue	5, 6, 7	H	1
J 133	Campbell, D. M.	w McKellar	9, 10	F	1
J 134	Currie, Daniel	e Milner	21 to 24	F	1
J 135	Clark, Gilbert	w McKellar	3, 4	F	1
136	Clark, George	w McKellar	9, 10, 11	H	1
J 141	Chesley, Jordan	s Metcalfe	7	F	1
J 142	Cook, James	s Metcalfe	6	F	1
147	Carson, J. S.	con 5	part 20	F	1
160	Corneil, Christopher	Corneil sy	part 7	F	1
204	Cleverdon, L.	J & W survey	45 to 48	F	1
205	Crispin, Thomas	e Oxford	19	F	1
136	Campbell, W.	w McKellar	9, 10, 11	F	1
211	Dalton, Dukes	w Milner	41, 42	F	1
J 214	Dudley, George	con 4	part 21	F	1
215	Dunsmore, Thos	con 10	part 11	H	1
218	Davis, David	Young's sy	6, 7, 8, 9	F	1

Roll No.	NAME.	Street or Concession.	Number of Lot or Part Lot.	Other Descip'n	FO
J239	Drynan, Wm	e Oxford	18	F	1
241	Dickenson, R	e Oxford	16	F	1
806	Dell, Howard	J & W sy	29	F	1
J252	Ellico, Charles	con 10	part 11	F	1
256	Elliott, William	J & W sy	8 and 9	F. 60	1 W
264	Evans, David	s Albert	4	H	1
265	Embree, Luther	Corneil sy	7	H	1
132	Easterbrook, R.	e Oak Avenue	5, 6, 7	F	1
666	Ewer, W. H.	T & L sy	part 4	F	1
<i>M</i> 256	<i>Ellick John A Jr W Sy</i>		<i>8-9</i>	<i>7</i>	<i>1</i>
288	Ferris, W. Y.	Armstrong sy	5 and 6	H	1
J289	Fletcher, W. D.	w McKellar	2	F	1
290	Fisher, John	w McKellar	11	F	1
J292	Fletcher, Benjamin	w McKellar	7	H	1
301	Frank, Zacharias	s Albert	part 25	H	1
J319	Fullerton, James	s Albert	1	F	1
J322	Frank, John	J & W survey	64 to 73, 81 to 93	F	1
217	Ferguson, James	Corneil sy	3, 4	F	1
379	Fuller, H. P.	Armstrong sy	27 to 30	F	1
J332	Gilzean, G. D.	con 10	part 10	F	1
334	Getty, Joseph	w Milner	43, 44	H	1
J335	German, G. G.	con 5	21	H	1
J362	Goodwin, A	w Oxford	6 and 7	F	1
475	Gilzean, J. T. A.	s Albert	20, 21, 22	F	1
J379	Hustler, Gilbert	Armstrong sy	27 to 30	H	1
382	Holmes, John	s Metcalfe	4, 5	H	1
408	Hunt, Squire	Sydenham place	12	F	1
J409	Humphries, Arthur	Corneil sy	6	H	1
J417	Hoag, W. A	s Albert	25	H	1
J418	Hutchcroft, Wm	Hyman's survey	15 to 18	F	1
421	Holden, George	con 5	part 20	T	1
421	Holden, Moses	con 5	part 20	F	1
J422	Harrison, Thomas	w Oxford	7	H	1
J433	Humphries, Samuel	T & L Co.'s sy	6	F	1
280	Henderson, Gregg	Corneil sy	2	F	1
<i>M</i> 529	<i>Hinchcliffe, Geo. W.</i>	<i>Armstrong sy</i>	<i>1, 2, 3</i>	<i>F</i>	<i>1</i>
J456	Ivor, H. A.	e Oxford	17	H	1
J462	Iverson, J. A.	Sydenham place	15	F	1
455	Johnson, H. D.	s Metcalfe	5	H	1
823	Johnston, Alex	w Oak Avenue	4, 5, 8, 9, 21, 22	F	1

Roll No.

J469

J470

472

475

J483

J428

494

495

499

500

J500

129

499

J522

J530

53

J53

J53

J55

56

J56

57

J57

J58

59

J61

J61

6

J61

J61

J61

J61

FOLLING SUB-DIVISION NO. 1.

Roll No.	NAME.	Street or Concession.	Number of Lot or Part Lot.	Other Desc'p'n	P.C.
J469	Kettlewell, Richard.	s Burns	2 and 3	F	1
J470	Keys, John	e Milner	33, 34	T	1
472	Kilty, H. J.	10	part 10	F	1
475	Ketchum, H. E.	s Albert	20, 21, 22	H	1
J483	Kittredge, A. H.	w Oak Avenue	14 to 18	F	1
J428	Lee, James H.	e Oxford	17	H	1
494	Lindley, George	e Oak Avenue	20	F	1
495	Lighthouse, George	w McKellar	1	H	1
499	Lamont, Nathaniel	con 5	part 21	H	1
560	Lamont, James	con 5	part 21	H	1
J506	Lamon, George	w McKellar	48, 49, 51 to 53	F	1
129	Lucas, W. J.	Armstrong sy	25, 26	F	1
499	Lnfestey, Thomas	5	part 21	F	1
J529	McKenzie, Daniel	Armstrong sy	1, 2, 3, 4	H	1
J530	Merrick, Alexander	T & L sy	7	H	1
533	Morgan, John	e Milner	pt 29, 30	F	1
J531	Moore, W. H.	10	part 10	H	1
J534	McDade, Wm	w McKellar	park lot 1	F	1
J558	Martin, Samuel	s Metcalfe	8, 9	F	1
564	Murphy, Robert	J & W	29	H	1
J565	McKay, John	J & W	52	F	1
575	McKenzie, Andrew	con 4	part 22	H	1
J576	Murphy, John	con 4	part 22	H	1
J581	Montague, Samuel	s Albe	24	H	1
588	McLarty, Robert	Hyma	2	F	1
J626	Meek, W. H.	s Albert	2	F	1
J630	Murray, W. H.	J & W sy	4, 5, 6, 7 and side	F	1
631	McIntosh, J. W.	J & W sy	35 to 38	F	1
J643	Maitland, Ed.	w Oxford	9, 10, 11	H	1
J643	Marshall, Thomas	con 45	part 15	F	1
292	McLean, Angus	w McKellar	7	F	1
581	McIntyre, Hrgh	s Albert	24	F	1
J659	Neil, Geo. H.	w McKellar	18	F	1
J662	Nichol, Peter	5	part 20	F	1
J664	Noble, James	e Victoria and	part lot	F	1
J665	Noble, D. C.	w Oxford	part lot	F	1
666	Nugent, Edmund	J & W sy	58 to 61	F	1
667	Nugent, E. W.	J & W sy	58 to 61	F	1
J671	O'Dwyer, Michael	T & L sy	5	F	1
J672	Owens, Henry	n Burns	1, 2	F	1
691	Parke, George	Armstrong sy	18, 19	F	13
J693	Parke, Edward	w Milner	1	F	1

POLLING SUB-DIVISION NO. 1.

Roll No.	NAME.	Street or Concession.	Number of Lot or Part Lot.	Other Desc'p'n	0
724	Rogers, Wm	} w McKellar st.. }		T	1
725	Rogers, Thos. H.			T	1
722	Riddal, Andrew	J & W sy	39	F	1
733	Richards, Robert	5	21	H	1
757	Ray, Samuel	w McKellar	5 and 6	F	1
788	Stevenson, Edward	T & L sy	7	H	1
790	Smith, J. G.	e Oak Avenue	15, 21, 22	H	1
792	Spurr, William	s Metcalfe	4 and 5	H	1
799	Steer, George	s Metcalfe	4	F	1
801	Sells, David	e Oak Avenue	13, 14	F	1
806	Smith, Wm	J & W sy	16	H	1
807	Saxton, Frank B	J & W sy	12, 13, 14	H	1
808	Snell, Thomas	5	N E pt 21	F	1
810	Shields, John	Hymn's sy	part 1	F	1
817	Shephard, Richard	w Oxford	8	H	1
818	Scott, A	e Albert	25	H	1
822	Smith, Henry	e Oak Avenue	16, 18, 19	F	1
823	Smith, Clark H	w Oak Avenue	4, 5, 8, 9, 21, 22	T	1
832	Smith, J. W	J & W survey	62, 63	F	1
847	Springer, Menno	s Albert	5	F	1
530	Stevenson, Robert	T & L survey	7	F	1
643	Smith, J. H	w Oxford	9, 10, 11	F	1
725	Sinclair, Dougald	w McKellar		F	1
75	Thompson, Archibald	J & W sy	40, 41, 42	F	1
466	Tisdal, Frederick	w Maria	22	F	1
807	Thompson, Isaac	J & W sy	12, 13, 14	F	1
971	Thompson, James	w Oxford	8	F	1
857	Trothan, Wm	w McKellar	16	F	1
858	Tyler, John	s Burns	1	H	1
859	Touzeau, Thomas	w McKellar		H	1
W 466	Tisdal, Finn P	w Maria	22	F	1
879	VanWyck, Rev. J.	Corneil sy	part 1	H	1
905	White, E. A.	W Milner	54 to 60	F	1
913	Wallace, William	S and K sy	5, 6, 7, 8	H	1
924	Williams, Michael	J and W sy	74, 75	F	1
925	Widdis, Robert	5	part 20	F	1

Compr
nor

Roll No.	
14	A
J 23	A
J 24	C
J 25	A
J 29	A
33	A
34	A
35	A
272	A

76	F
J 77	F
78	F
81	F
J 84	F
J 95	F
J 96	F
J 99	F
J 105	F
J 106	F
J 107	F
J 109	F
J 110	F
J 111	F
J 114	F
115	F
J 116	F
J 174	F
J 175	F
108	F

589 }
681 } Bu

J 17
19
19
19
19
J 15
J 15
26
26
J 2
J 2
2

POLLING SUB-DIVISION NO. 2,

Comprising all that part of the Town lying west of Caradoc Street,
north of Centre Street to Frank Street, thence north of James
Street to Maria Street and its intersection with the side
road. Polling place at the Town Hall.

Roll No.	NAME.	Street or Concession.	Number of Lot or Part Lot.	Other Desc'ip'n	P.O.
14	Andrews, Rev. A....	E Maria	4 pt 22	F	1
J 23	Allan, F. F.....	N Front	part 7.....	H	1
J 24	Campbell, Duncan.. }		N Front	T	1
J 25	Anderson, James	part U	S Front	T	1
J 29	Avery, Wm	part 21	part 7	F	4
33	Attwood, P. H.....	N Front	part 5	F	1
34	Auld, John	N Front	part 22	T	1
35	Adair, James	S Front	part 48, 49	F	1
272	Ashwell, Geo	N Centre			
76	Broderick, Werner ..	S North	part 7	H	1
J 77	Bradshaw, John	S Front	12.....	H	1
78	Beswick, Rev. S.....	N Centre	part 41	H	1
81	Bryans, Wm	N Centre	E hf 43.....	F	1
J 84	Bailey, Thos	S Centre.....	76.....	F	1
J 95	Bishop, Joseph	S Centre.....	77, 78	H	1
J 96	Barry, John	N Centre	W pt 45	H	1
J 99	Black, John	N Centre	parts 48, 49	F	1
J105	Barnes, James	N Centre	part 77	H	1
J106	Bowley, James	S Front	16 and pt 17	F	1
J107	Cleverdon, Lawr's'ce }	S Front	part 18	F	1
J109	Bowley, James		rear T U V.....	F	1
J110	Bixel, Mathew	N Front	E half 7	H	1
J111	Bixel, Syrus	N Front.....	9 and 10	F	1
J114	Barber, J. W.	N Front.....	part 22	F	1
115	Bettridge, Wm.....	N North.....	48, 49	T	1
J116	Bentley, Wm.....	N Centre	part 77	T	1
J174	Cain, Wm	N Centre		F	1
J175	Barry, John	N Centre			
105	Bond, Isaac		part 26 J	F	1
589 681	Barclott Benjamin	" "			
J176	Cox, James	S Front	12 of 24.....	F	1
192	Cameron, Wm	N Front	part W	F	1
193	Cameron, D. M.....		part T	T	1
196	Crealey, Truman	S Front	9 of 50.....	H	1
197	Campbell, Thomas ..	N Centre	Road lot	H	1
J198	Colter, Charles	N Front	part 5	T	1
J199	Cummings, Wm	N Front.....	part 6	T	1
200	Campbell, T. M.....	N Front.....	W hf T	F	1
201	Chalmers, James	N Front.....	pt 21 and 22	T	1
J202	Crispin, W. T.	S Front			
203	Cameron, John.....	Income			

POLLING SUB-DIVISION NO. 2.

Roll No.	NAME.	Street or Concession.	Number of Lot or Part Lot.	Other Desc'ip'n	P.O.
J670	Napper, Charles	n Front	part 5	T	1
J681	O'Dwyer, Patrick	n Front	1 and 2	T	1
J682	O'Keefe, Patrick	n Front	part 2	F	1
242	Orehard, George	s Front	U	F	1
705	Plaxton, Albert	n Centre	S and T	H	1
709	Paine, John	s Front	10 of 24	T	1
710	Paine, Benjamin			T	1
J715	Parker, J W	n Centre	40	F	1
J716	Parker, C W	n Front	6	F	1
200	Parker, Harvey	n Front	part 6	F	1
273	Patterson, Samuel	s Front	part 15	F	1
463	Pool, Irving	n Front	e part V	F	1
<i>W 46 Park 2 m</i>		<i>n Centre</i>	<i>20 2/3 45</i>	<i>F</i>	<i>1</i>
J734	Raymond, John	n North	12	H	1
736	Reuffer, Joseph	n Centre	S & T	H	1
747	Reuffer, Joseph	s Centre	74	H	1
754	Rapley, L F	n Front	part W	T	1
755	Rapley & Co	n Front	1	T	1
757	Ray, Samuel	s Front	part 26	T	1
758	Ross, G W, MP	n Front	part W	F	1
J762	Robertson, John	s Front	part 22	H	1
<i>W</i> 765	Rowland, E & Co.	n Front	part 7	T	1
846	Rothwell, Thomas	con 4	21	F	1
814	Schooley, W D	n Maria	part 22	H	1
J831	Satherland, Robt	n Centre	part 48, 49	F	1
837	Scott, C G	n Front	part V	F	1
838	Snell, F W	s Front	part U	T	1
839	Snell, A F			T	1
J840	Small, J S	s Front	part U	T	1
J842	Stevenson, Alex	n Front	part 6	F	1
J845	Swift & Co	n Front	part W	T	1
J846	Smith, W T	n Front	part 2	T	1
J847	Springer, Menno	s Front	Arcade	T	1
849	Stevenson, R A	n Front	Income	T	1
947	Scatcherd, E W	4	21, 22, 26	F	1
236	Street, Noah K	n Front	part U	F	1
621	Sewell, Samuel and	n Centre	part U & T	F	1
589	Adamson, Jas	n Centre	part S & T	F	1
868	Tinkler, Wm	4	part 23	H	1
J869	Tomlinson, G W	s Centre	74	T	1
872	Tucker, Titus	n Front	part 1 and 2	T	1
222	Thompson, James	n North	part 8	F	1

Roll No.
882
J884
J885
J886

900
901
902
J931
J937
J938
J944
J944
10
31

POLLING SUB-DIVISION NO. 3,

Comprising all that part of the Town lying west of Caradoc Street, south of Centre Street to Frank Street, thence south of James Street and east of Richmond and McKellar Streets. Polling place at the High School.

Roll No.	NAME.	Street or Concession.	Number of Lot or Part Lot.	Other Descip'n	
J 6	Allan, B. F.	S and K sy	24		
7	Anderson, W. J.	S and K sy	W half 107	H	1
12	Adair, Benjamin	S and K sy	84	H	1
J 16	Armstrong, T. L.	s James	U and E half V	F	1
J 17	Anthony, W. H.	n Metcalfe	W half V and 202	F	1
J 18	Althouse, M W	n Metcalfe	105, 106	H	1
J 27	Alison, P. J	S and K sy	67, 68	H	1
54	Brown James	S and K sy			
55	Brady, Albert	S and K sy	29	H	1
J 56	Brown, J. W.	S and K sy	25	H	1
J 58	Bradt, Sylvester	S and K sy	60	F	1
J 59	Brown, John	S and K sy	139, 140	H	1
61	Brock, Thomas	Reid sy, S R R	134 & pt 15, R'ds sy	H	1
62	Barnet, Edwin	Reid sy, S R R	part 7	F	1
63	Barron, Edwin	S and K sy	N half 13	H	1
64	Bicknell, Benjamin	Reid sy, S R R	96	H	1
93	Bishop, Wm	n James	part 6	H	1
108	Billington, George	S and K survey	109, 110, 111	T	1
58	Buck, Wm	S and K survey	38	F	1
386	Brown, Silas	S and K survey	139, 140	F	1
514	Blythe, James	n James	73	F	14
597	Bell, Richard	s Albert	part V	F	1
728	Barry, John	S and K survey	32	F	1
344	Buck, William	s Albert	65, 66	F	1
			70	F	1
J137	Campbell, James	S and K survey	36, 37	F	1
J138	Campbell, Thomas	S and K survey	141	F	1
139	Cutler, Jacob	Reid sy, S R R	part 6	F	1
J144	Cawthorp, Thomas	s Metcalfe	1 and 3	F	1
15	Currie, Wm	Reid sy, S R R	S half 8	F	1
J165	Cooper, Charles	n James	S and T	F	1
16	Ceuttis, Robt	s James	E half T	H	1
172	Cowan, Thomas	s Centre	parts 79, 80	H	1
178	Courtney, Richard	n James	109, 110	F	1
J181	Crone, Wm	s Albert	34, 35	F	1
J206	Carruthers, Andrew	S and K survey	90, 91	F	1
61	Clark, W. S.	Reid sy, S R R	part 7	F	1
			147 148	F	1
J209	Donley, Patrick	e McKellar	4 and 5	F	1
J210	Donley, James	Beattie sy	23 to 27	F	1

W 794 Campbell Jas 27 75 Su

POLLING SUB-DIVISION NO. 3.

Roll No.	NAME.	Street or Concession.	Number of Lot or Part Lot.	Other Desc'p'n	Other
J498	Lenfestey, James	J and W survey	53, 54	F	1
503	Laird, W. P.	s Centre	V and 81	H	1
504	Lindsay, John	n James	E half V	H	1
J506	Lamon, George	s Centre	79	F	1
J508	Lenfestey, John jr.	n James	part S and T	F	1
509	Lauler, J. E.	s Front	20	F	1
228	Lindsay, W. B.	s Centre	N E quarter S	F	1
J539	McGowan, Robert	S and K survey	79	H	1
540	McEwen, Robert	S and K survey	78	H	1
541	McChesney, Hugh	S and K survey	77	H	1
J542	McBeth, George	S and K survey	62	F	1
J543	McGugan, Archibald	S and K survey	59	H	1
J546	Moore, Dougald	S and K survey	101	F	1
J547	McNeice, Thomas	S and K survey	E half 107, 4, 5	F	1
J548	McIntyre, P. H.	con 10	part 11	F	1
550	McKellar, J. A.	S and K survey	132	H	1
551	Mathewson, Samuel	Reid sy, S R R.	N half 8	H	1
552	Miles, D. W.	Reid sy, S R R.	S half 7	F	1
553	Main, Henry	Reid sy, S R R.	4	H	1
554	McIntyre, John	Reid sy, S R R.	3	F	1
J557	Murray, John W.	Reid sy, S R R.	part 15	F	1
587	Mitchell, John	s Centre	part T.	F	1
589	McEwen, George	n Centre	S and T	H	1
J594	McBride, Samuel	n Metcalfe	E half U	H	1
J595	McBride, John	n Metcalfe	S	F	1
J596	Moody, Wm	s Albert	33	F	1
J623	Mann, George A.	Reid sy	part 6	F	1
J638	Morrison, Peter	S and K survey	153, 154	F	1
17	McIntyre, J.	n Metcalfe	V and 202	F	1
54	McNeice, James	S and K survey	29	F	1
221	McNeice, Thomas	S and K survey	42	F	1
553	McIntyre, Hugh	Reid sy, S R R.	4	F	1
797	Morgan, Richard	n James	U	F	1
J650	Noble, John	S and K survey	10, 11, 12	H	1
J663	Nicholson, Robert	n Metcalfe	54, 55, 56	F	1
J667	Nicholls, Thomas	n Front	part V	F	1
64	Nicholls, Edward	Reid sy, S R R.	part 6	F	1
540	Napper, Charles	S and K survey	78	F	1
J673	O'Dwyer, Edward	C, McK. & McR.'s sy	1 and 2	F	1
J674	Ogden, John	s Metcalfe	2	F	1
J677	Ogden, W. A.	s Albert	28	F	1
J678	Orr, James	s Centre	T	H	1
7	Orr, Rowland	S and K survey	107	F	1
694	Park, James	S and K sy	34	F	1
695	Petch, James	S and K sy	76	F	1
J707	Parsons, Edwin	n James	109	H	1
720	Pincombe, Richard	Reid sy, S R R.	mill	T	1

Roll No.	
6	Pe
93	Pr
J727	R
J728	R
729	R
J737	R
739	R
J740	R
J741	R
J742	R
J751	R
758	R
J760	F
762	F
J791	S
793	S
794	S
J795	S
803	S
J804	S
819	S
820	S
821	S
J825	S
J830	S
J836	S
857	S
348	S
354	S
401	S
471	S
678	S
791	S
860	S
861	S
862	S
863	S
864	S
865	S
866	S
867	S
868	S
869	S
870	S
871	S
872	S
873	S
874	S
875	S
876	S
877	S
878	S
879	S
880	S
881	S
882	S
883	S
884	S
885	S
886	S
887	S
888	S
889	S
890	S

W

W 348

POLLING SUB-DIVISION NO. 3.

Roll No.	NAME.	Street or Concession.	Number of Lot or Part Lot.	Other Desc'pn	Q
6	Petch, John	S & K sy	24	F	1
93	Prangley, George	n James	109, 110, 111	F	1
J727	Rothwell, Thomas	McK & McR sy B.	9, 10	F	1
J728	Rutledge, William	S & K sy	65, 66	H	1
729	Roblin, David	S & K sy	61	H	1
J737	Rapley, Henry	n James	U	H	1
739	Robinson, J. W. & Son	W Caradoc	52	T	1
J740	Robinson, John	S & K sy	100	F	1
J741	Robinson, James	S & K sy	92, 99	F	1
J742	Robinson, Alfred	McK and McR sy C.	6, 7	F	1
J751	Rapley, Manfred	McK and McR sy D.	1, 2	F	1
758	Ross, G. W., M. P.	S and K sy	150, 151, 152	F	1
J760	Reid, *Alexander	s James	197, 198, 199	F	1
762	Robertson, John	n Metcalfe	T	T	1
J791	Stevens, F. B.	e McKellar	11, 12, 13	H	1
793	Saulsbury, John	S and K sy	113, 114	H	1
794	Stepher, John	S and K sy	147, 148	F	1
J795	Street, E.	S and K sy	135	F	1
803	Stoops, Wm	S and K sy	93	F	1
J804	Shields, Wm	J and W sy	16	H	1
819	Saulsbury, John	s Centre	part 72	T	1
820	Smith, Charles	s Metcalfe	park lot 1	H	1
821	Sewell, Samuel	s Metcalfe	57	H	1
J825	Sampson, James	s Metcalfe	part 79	H	1
J830	Spurr, L. V.	s Centre	part 79	F	1
J836	Saul, J. S.	McK and McR sy C.	8, 9, 10	O	1
857	Seymour, Henry	R. R. Station	part U	F	1
348	Stokoe, Bartholomew	n Metcalfe	part U	F	1
354	Seaton, John	s James	200, 202	F	1
401	Sells, David	Reid sy	part 5	F	1
471	Shepherd, Wm	S and K sy	49	F	1
678	Scott, John	s Centre	part T	F	1
791	Smith, Richard	e McKellar	11, 12, 13	F	1
<i>W 348</i>	<i>Shibler J W</i>	<i>Metcalfe</i>	<i>W n n</i>	<i>T</i>	<i>1</i>
860	Topp, Abraham	S and K sy	27, 28	F	1
861	Tomlinson, C. S.	Kittridge sy	66	F	1
862	Thompson, John	S and K sy	133	F	1
863	Traffa, Wm	S and K sy	3 to 5, 11, 14	H	1
18	Thompson, Archibald	n Metcalfe	105, 106	F	1
J891	Wilson, Joseph	s Albert	38, 39	T	1
J897	Woods, James	s James	200, 202	F	1
J898	Black, J. V.	s James	200, 202	F	1
J899	Woods, James	n Metcalfe	105, 106	H	1
J916	Woods, Charles	S and K sy	72	F	1
918	Wilkinson, W. B.	McK and McR sy B.	6, 7	F	1
919	Webb, Joseph	S and K sy	74	H	1
929	Worthington, A. I.	S and K sy	94	F	1
94	Winters, Thomas	n James	part 109	F	1
919	Zavitz, Thomas	S and K sy	74	F	1

POLLING SUB-DIVISION NO. 4,

Comprising all that part of the Town lying east of Caradoc Street and north of Metcalfe Street. Polling place at the Colborne Street School House.

Roll No.	NAME.	Street or Concession.	Number of Lot or Part Lot.	Other Desc'p'n	○
J 21	Alexander, J. H	s Front	part Q.	H	1
J 22	Akroyd, Joseph	s Front	part R.	H	1
J 26	Ayer, Joshua	s Front	e part K.	T	1
J 35½	Allen, R. F.	n Front	rear of R S.	H	1
J 47	Baskerville, Jas	A and K sy	62	F	1
J 48	Bailie, Hugh	A and K sy	68	F	1
J 83	Bond, John	e Caradoc	part 10, 11	F	1
J 87	Barnes, John	e Caradoc	parts 4 and 5	F	1
J 89	Best, Jacob	A and K sy	parts 38, 39	F	1
90	Baker, J. L.	e Colborne	part 9	H	1
J 92	Baughart, James	A and K sy	n half 38, 39, 40	F	1
98	Black, A. N. C	con 4	29, 30, 31	F	1
J 98	Black, John	con 4	29, 30, 31	F	1
100	Baker, Charles	s Front	w part J	H	1
101	Burkholder, Henry	n Front	part H	H	1
J 102	Baughart, John	s Front	H	F	1
112	Bixel, Cyrus	n Front	part S	H	1
119	Banks, Thomas	s Front	H	H	1
347	Brown, John	e Caradoc	part 1	F	1
330	Bateman, T. H	A and K sy	52	F	1
438	Bravner, Robert	n Metcalfe	part 10	F	1
189	Bishop, Win	w Colborne	w half 3	F	1
125	Clarke, Samuel	A and K sy	53	H	1
J 126	Campbell, James	A and K sy	35 and 36	H	1
J 127	Collins, Thomas	A and K sy	50	H	1
163	Campbell, Henry R.	e Caradoc	part 1	H	1
164	Coy, Richard	e Caradoc	part 9	F	1
169	Collins, Edward	e Arthur	parts 4, 5	H	1
176	Cox, James	con 4	part 24	F	1
182	Craig, F. J				
J 183	Craig, W. E	w Head	1, 2, 3	F	1
J 184	Craig, J. G.				
187	Carson, Samuel	n Front	E half K	F	1
189	Craik, Alex	s Front	w part N	F	1
191	Campbell, Donald	e Caradoc	2	H	1
J 206	Carruthers, A	n Front	rear G, H, I	F	1
207	Callaghan, John	s Front	part R	F	9
313	Cawthorp, Thomas	s Front	w half K	F	1
604	Cummer, A. E	e Head	1 and n half 2	F	1
658	Cameron, Allan	A and K sy	71	F	1

Roll No. 229 Del 234 Da 237 Du J244 Da 850 De J267 Ev 271 En 126 En 836 Ev 836 Ev 304 FI J305 FI 308 FI J309 FI J313 FI 316 FI 330 G 331 G J341 G J347 G 356 G J361 G 365 G J277 H 380 H J423 F J424 F J425 F J431 F 432 F J435 F 436 F J437 F J438 F 169 F J460 J463

Roll No.	NAME.	Street or Concession.	Number of Lot or Part Lot.	Other Desc'p'n	Acres
229	Dell, Solomon	e Colborne	8, 9	F	1
234	Davidson, R.	A and K sy	33, 34	F	1
237	Dumbrill, Richard	n Metcalfe	8, 9, 10	F	1
244	Daniels, Wm	e Head	n half 6	F	1
850	Dewar, Wm	n Front	D, E, F	T	1
J267	Evely, Wm	n Front	w half K	F	1
271	English, John	r Metcalfe	plot	H	1
126	Emmens, Robert	A and K sy	35, 36	F	1
836	Evans, David	s Front	part Q	F	1
836	Evans, F. F.			H	1
836	Evans, F. L. E.			H	1
304	Floyd, John	e Caradoc	8	H	1
J305	Frank, F. W.	e Caradoc	s half 8 and 9	F	1
308	Fitzpatrick, James	w Arthur	3	F	1
J309	Fitzpatrick, Peter	w Colborne	6	F	1
J313	Fitzpatrick, Thomas	s Front	K R	H	1
316	Finlay, James	n Front	part P	H	1
330	Gare, George	A and K sy	52	H	1
331	Gill, Aaron	A and K sy	44	H	1
J341	Galloway, James	con 4	part 22	F	1
J347	Gordon, George	e Caradoc	part 1	F	1
356	Geary, William	s and n Front	N, M	F	1
J361	Goodson, Charles	A and K sy	w half 67	H	1
365	Grant, W. H.	e Caradoc	3	F	1
J277	Hutchinson, Edward	s Front	R	T	1
380	Hardy, R. C.	A and K sy	55	F	1
414	Hull, William	con 4	part 22	F	1
J423	Heard, John	e Caradoc	5	F	1
J424	Heard & Co	e Caradoc	s part 5	F	1
J425	Hoare, W. W.	e Caradoc	parts 6, 7	H	1
J431	Hull, W. W.	con 4	part 22	F	1
432	Hull, Jacob	con 4	part 22	F	1
J435	Hagarty, Edward	e Head	parts 2, 3	H	1
436	Hill, Rev. A. C.	w Head	church	H	1
J437	Hill, George S	w Colborne	3	H	1
J438	Hurd, Hortence	n Metcalfe	10	H	1
169	Humphries, S	e Arthur	3, 4, 5	F	1
J464	Irvine, Thomas	n Front	S	F	1
J460	Johnson, P. H.	w Colborne	2	F	1
J463	Johnston, W. J.	w Colborne	part N and O	H	1

oc. Street
Col-

Other
Desc'p'n

H. 1
H. 1
F. 1
H. 1

F. 1

F. 1

F. 1

F. 1

F. 1

F. 1

F. 1

F. 1

F. 1

F. 1

F. 1

F. 1

F. 1

F. 1

F. 1

F. 1

F. 1

F. 1

F. 1

F. 1

F. 1

F. 1

F. 1

Roll No.	NAME.	Street or Concession.	Number of Lot or Part Lot.	Other Desc'ip'n	Acres
483	Kittridge, A. H.	A and K sy	22, 23	F	1
483	Keefer, F. H.	w Colborne	12, 13, 14	F	1
J425	Lawson, Frederick	con 4	part 22	F	1
435	Lindsay, James	e Head	parts 2 and 3	F	1
895	Large, William	e Head	parts 3, 4	F	16
					1
526	McLeod, James	A and K sy	43	H	1
J527	Merrils, Thomas	A and K sy	70	F	1
J528	McCormick, John	A and K sy	72	H	1
593	Milner, William	n Metcalfe	10, 11	F	1
J603	Mallon, Thomas	n Metcalfe	9	H	1
604	Mitchell, Alex	e Head	1 and n half 2	H	1
J605	Mann, Shadrach	e Colborne	n half 5	F	1
615	McCallum, Daniel	s Front	e half L	F	1
616	McNeil, John	n Front	w half L	F	1
J618	McMillen, Josiah	s Front	e half O	F	1
J620	Martyn, Joseph	4	part 23	F	1
621	McGarvey, John	n Front	P	F	1
645	McColl, Hugh	s Front	P	T	1
J646	McVicker, Daniel	n Front	part R	T	1
119	Merrils, Thomas	s Front	H	F	1
425	Mahon, J. L.	e Caradoc	6, 7	F	1
J658	Northcott, J. E.	A and K sy	71	H	1
J676	O'Neil, J. H.	4	23	T	1
J679	Ogden, Henry	e Colborne	part 6	F	1
191	O'Keefe, Patrick	e Caradoc	2	F	1
713	Pike, Wm	n Front	part L	H	1
J714	Pike, Charles	n Front	P and Q	F	1
J719	Pool, Irving	e Colborne	1, 2, 3	F	1
720	Pincombe, R.	con 4	23, 24	F	1
575	Pannel, Wm	4	part 22	F	1
576	Petch, Francis	4	part 22	F	1
J745	Reid, John	e Colborne	s half 5	F	1
746	Rundle, William	e Colborne	6 and 7	F	1
J749	Richardson, L. R.	con 4	part 23	F	1
J750	Richardson, H. T.	con 4	part 23	F	1
J752	Richardson, Wm	s Front	A, B	F	1
J753	Rothwell, C. A.	s Front	part P	T	1
35	Rutherford, Jas	n	rear of R S	F	1
314	Rowles, Wm	n r	part L	F	1

Roll No. 767 She
 787 Sic
 827 Sm
 828 Sho
 829 Sim
 834 Sta
 835 Sta
 841 Ser
 844 Sec
 127 Sa
 855 Ta
 855 M
 856 Ta
 866 TI
 871 TI
 876 U
 880 V
 881 V
 892 V
 893 V
 894 V
 895 V
 908 V
 940 V
 940 V
 942 V
 943 V
 463 V
 935 V

POLLING SUB-DIVISION NO. 4.

Roll No.	NAME.	Street or Concession.	Number of Lot or Part Lot.	Other Desc'ip'n	Ac
767	Shepherd, George	4	part 24	F	1
J787	Sickles, John	A and K sy	47, 48, 49	F	1
J827	Smith, W. H.	w Arthur	6	H	1
827	Shotwell, J. <i>W B</i>	e Colborne	8	H	1
J829	Simpson, Wm	e Colborne	part 1	H	1
J834	Statham, T. J.	s Front	part P	T	1
J835	Statham, Enoch	s Front	part Q	F	1
841	Seaton, John	s Front	part A	H	1
844	Scott, John	s Front	part A	F	1
127	Saxton, J	A and K sy	50	F	1
J855	Taylor, Anthony	A and K sy	69	F	1
J855	Murdock, Wm	A and K sy	69	H	1
J856	Tanton, John	A and K sy	5	F	1
866	Thompson, A	con 4	part 23	F	1
871	Thompson, Wm	e Caradue	10	F	1
876	Urquhart, Wm	4	part 24	H	1
J880	Vrooman, David	w Colborne	7	F	1
J881	Vokes, J. T.	s Front	R	T	1
J892	Wilkinson, Isaac	w Arthur	7 and 8	F	1
J893	Watson, George	n Metcalfe	10	H	1
J894	Walkinson, W. J.	e Head	s half 6	H	1
J895	Wilson, George	e Head	parts 3, 4	H	1
J908	Williams, Roger	A and K sy	E half 67	F	1
940	Wright, James	n Front	G, H, I	F	1
940	Wright, C. W.	n Front	G, H, I	F	1
942	Winlow, J. B.	w Colborne	4	F	1
943	Walsh, Patrick	s Front	w half J	F	1
463	Wright & Durand	w Colborne	parts N and O	F	1
935	Zavitz, David	A and K sy	63	F	1

W John James

POLLING SUB-DIVISION NO. 5,

Comprising all that part of the Town lying east of Caradoc Street
and south of Metcalfe Street. Polling place at the Caradoc Street School House.

Roll No.	NAME.	Street or Concession.	Number of Lot or Part Lot.	Other Desc'p'n	Ac.
2	Althouse, A E	e Ellor	S W pt 3	F	1
3	Ascott, George	s Henry	7	F	1
4	Adams, John	n English	E half 7	H	1
5	Argue, Robert	n English	W two-thirds of 6	H	1
8	Anderson, Jas	e Caradoc	4, English sy	F	1
250	Alexander, James	n English	13	F	1
J 37	Bravener, Robert	Munn's sy	9 and 10	F	1
38	Boyd, John	w Ellor	15	H	1
39	Black, Archibald	e Ellor	6	F	1
40	Boyd, Thomas	n English	14	F	1
J 41	Brown, J. T	n English	9	F	1
43	Bailey, Frederick	n English	W half 8	H	1
44	Eker, Andrew	S E	4, 16	F	1
45	Barron, Isaac	Blackburn sy	15	F	1
46	Beattie, John	Blackburn sy	24	H	1
87	Barnes, John	s Metcalfe	part 2	F	1
J 88	Berdan, John	Blackburn sy	6	F	1
91	Bowlon, Isaac	Blackburn sy	2	F	1
326	Ballantine, Archibald	w Ellor	N part 20	F	1
447	Barclay, J	10	part 13	F	1
522	Brown, W. H	n English	parts 6 and 7	F	15
109	Campbell, Edward	con 10	part 13	H	1
J 120	Cooper, William	e Ellor	part 9	F	1
J 121	Condon, Thor	w Ellor	11, 12	F	1
122	Columbus, Wm	n Canaan	plot	H	1
J 123	Carr, Duncan A	Blackburn sy	31, 32	H	1
J 124	Cockburn, Alex	Blackburn sy	27	H	1
J 150	Calcut, Chester	w Ellor	18	H	1
167	Corkindale, L	W, Blackburn sy	plot	H	1
J 168	Carr, Isaac	W, Blackburn sy	plot	F	1
176	Cox, James	s Metcalfe	4 and 8	F	1
J 179	Clemeneg, M	n Canaan	16, 17, 18	F	1
492	Carroll, James	s English	3	F	1
524	Castle, Joseph	Blackburn sy	9, 10	F	1
889	Cawrsc, Charles	s Concord	13	F	1
208	Davis, E	con 10	part 13	F	1
J 238	Diprose, Robert	n Concord	6	H	1

Roll No.	NAME.	Street or Concession.	Number of Lot or Part Lot.	Other Desc'p'n	P.O.
242	Dyas, W. J.	e Caradoc	12	F	1
245	Douglas, Thomas	con 10	part 12	F	1
5	Donley, Patrick	n English	part 6	F	1
43	Drew, James	n English	W half 8	F	1
63	Donley, Patrick	S & K sy	96	F	1
372	Duncan, James	10	part 13	F	1
370	Drew, James	n English	E half 8	F	1
j246	English, J. H.	con 10	part 12	F	1
247	English, J.	e Caradoc	5 and 6	H	1
250	Emmons, Januel	n English	13	H	1
266	Evans, John H.	s Concord	12	F	1
269	English, John	con 10	12	F	1
270	English, J. H.			F	1
249	Elwick, George	Munn's sy	15	F	1
j284	Fraser, Elijah	con 10	part 13	F	1
285	Fraser, John	e Ellor	7	F	1
286	Ferguson, James	n Henry	14	F	1
j310	Fawcett, Charles	s Canaan & e Elm	26, 25	H	1
j311	Fawcett, W. F.	s Canaan	19 to 22	F	1
j322	Frank John	con 10	part 13	F	1
j326	Gooderham, James	w Ellor	N half 20	H	1
j327	Gowrie, John	Blackburn sy	34, 35	F	1
j328	Gibson, J. W.	Blackburn sy	36, 37, 38	F	1
343	Gill, Michael	e Ellor	1 and 2	F	1
350	Gooderham, Henry	con 10	part 12	F	1
876	Gallivan, Timothy	10	part 13	F	1
920	Gordon, Robert	e Caradoc	2	F	1
j371	Haldane, Robert	con 10	part 13	F	1
j372	Hodgkinson, Wm.	con 10	part 13	H	1
j374	Harris, Adam	w Ellor	19	F	1
376	Harwood, Abraham	s English	E half 8	H	1
377	Hart, John	s English	11	H	1
j378	Hamilton, John	Blackburn sy	39, 40	F	1
j427	Hodginson, Wm	s Concord	10	H	1
j428	Hill, W. F.	s Concord	9	H	1
j429	Hunter, George	n Canaan	13, 14	H	1
j430	Harrison, Edward	s Metcalfe	part 57	H	1
j434	Hanna, John	Blackburn sy	5	F	1
523	Hughes, James	Blackburn sy	16	F	1
j450	Irvine, Samuel	Reid sy	part 14	H	1
j445	James, David	10	part 14		1
j447	Jones, Daniel	10	part 13	H	1

Roll No.	NAME.	Street or Concession.	Number of Lot or Part Lot.	Other Desc'ip'n	Ac
J448	James, Joseph	10	part 13	F	1
449	James, Philip	s English	1	H	1
38	Jennings, J. P.	w Ellor	15	F	1
429	Johnston, Alex	n Canaan	13, 14	F	1
467	Kerr, Robert	Blackburn sy.	45	H	1
J483	Kitredge, Alfred H.	con 10	part 12	F	1
J494	Lynam, John	e Ellor	10	F	1
485	Lapage, Joseph	e Ellor	9	F	1
186	Lamont, Norman	e Ellor	part 10	F	1
487	Leitch, D L	n English	10	H	1
J488	Loynes, Samuel	n English	1	F	1
J489	Loynes, John	n English	2	F	1
490	Loynes & McLellan	n and s English	part A, 2, 3	F	1
J481	Loynes, James	n English	3	F	1
J492	Loynes, John jr.	s English	14, 15	H	1
493	Loughrea, James	n Canaan	plot	H	1
503	Laird, W P	Laird's sy	C, D, E, F	F	1
783	Lamon, George	Blackburn sy	13, 14	F	1
514	Moore, James	Munn's sy	7	F	1
516	McIntosh, Wm.	con 10	part 12	H	1
517	McKellar, D	con 10	part 12	T	1
518	McKellar, Alex.				
519	McWhinney, Jas	n English	12, 13	F	1
J521	McLellan, Archy	s English	9, 10	F	1
522	Mann, Melvin	n English	parts 3 and 7	H	1
523	Morrow, William	Blaekburn sy.	16	H	1
524	Morrow, Frank	Blaekburn sy.	9, 10	H	1
J549	Mihell, James	con 10	part 12	F	1
J592	Milner, Edward	n Concord	5 and 6	F	1
598	Mann, Wm.	w Blackburn sy	plot	H	1
J599	McDermot, Michael	w Blac ^b burn sy	plot	H	1
J641	Moore, W C	w Blac ^b burn sy	3, 4	F	1
J642	Moore, George	10	part 15	T	1
J651	Mansfield, George	s Metcalfe	3, 7	F	1
J655	Moore, Archibald	10	13	F	1
4	Morrow, James	n English	7	F	1
487	Mann, John	n English	10	F	1
912	McCrimmon, John	s English	7	F	1
J656	Newton, John	e Ellor	13, 14	F	1
J657	Norris, George	n Henry	1, 2	F	1
153	Nell, Thomas	w Ellor	18	F	1
238	Nicholson, Henry	e Caradoc	1 and 6	F	1
781	Northern, Charles	10	part 13	F	1

Roll No.	NAME.	Street or Concession.	Number of Lot or Part Lot.	Other Desc'p'n	Q
685	Plank, Francis	10	part 12	F	1
686	Plank, Sylvester	10	part 13	F	1
687	Plank, Levi	10	part 13	F	1
688	Perry, William	n English	part 7	H	1
690	Plank, Samuel	Blackburn sy	26	H	1
717	Pike, J H	w Ellor	14	H	1
721	Plaxton, William	Munn's sy	19 to 27 and 28	F	1
467	Philips, J C	Blackburn sy	45	F	1
516	Plank, A	10	part 12	F	1
722	Robinson, Frank	Blackburn sy	43, 44	F	1
723	Robinson, John	Blackburn sy	9 to 10	H	1
738	Robertson, D S	n Concord	5 and 6	H	1
744	Richardson, Robert	10	part 13	F	1
760	Reid, Alexander	s Henry	4, 5	F	1
765	Robson, John	n English	e half 6, w half 7	H	1
445	Robertson, P	10	14	F	1
779	Steadman, Wm	Gregory sy	1, 2, 3 and part 4	F	1
780	Sinclair, D B	10	part 13	F	1
781	Schram, Levi	10	part 13	H	1
782	Statia, E	n English	8	F	1
783	Snyder, Andrew	Blackburn sy	13, 14	H	1
784	Saulsbury, Nelson	Blackburn sy	11	F	1
785	Stonehouse, Robert	Blackburn sy	33	H	1
824	Sickels, Edward	s Concord	11	F	1
377	Sawyer, L D	s English	part 8	F	1
852	Thompson, Archibald	w Ellor	16, 17	F	1
854	Thody, Elijah	n English	A, B	H	1
598	Thompson, Alex	w Blackburn sy	plot	F	1
688	Thompson, James	n English	e part 7	F	1
874	Urquhart, George jr	w Ellor	4	F	1
875	Urquhart, George	w Ellor	5	F	1
876	Upton, Frank	10	part 13	H	1
517	Vail, G W	10	part 12	F	1
888	Welch, William	Concord	Head	F	1
889	Wilton, John	s Concord	13	H	1
906	Winters, John	10	part 14	F	1
907	Woodward, Frank	Munn's sy	12, 16	F	1
910	Watson, W G	e Ellor	5 and 20	F	1
912	Winterton, John	s English		H	1
917	Wilkinson, Reuben	Munn's sy	1, 2, 3, 5, 6	F	1
920	Wray, William	e Caradoc	2	H	1
938	Woodbury, Edward	10	part 13	F	1
599	Woods, Charles	w Blackburn sy	plot	F	1

POLLING SUB-DIVISION NO. 6,

Comprising all that part of the Town lying west of Maria Street to its intersection at the side road, thence west thereof and north of the road allowance between the 4th and 5th concessions of Adelaide. Polling place at R. P. Smith's Coach House.

Roll No.	NAME.	Street or Concession.	Number of Lot or Part Lot.	Other Desc'p'n	O
31	Armstrong, W. A. }	con 4	part 20	F	1
32	Armstrong, R. W. }			F	1
J159	Alison, B. H.	n Front	13	F	1
477	Alison, B. H.	s North	part 7 and 8	F	1
<i>W/72</i>	<i>Brown Thomas</i>	<i>Con 4</i>	<i>Part 21</i>	<i>F</i>	<i>1</i>
72	Brown, Donald	con 4	part 21	T	1
J 73	Baskerville, Thos	con 4	part 20	T	1
J 74	Baskerville, J. W	Crealey sy	5 and 6	F	1
J148	Croucher, George	Saulsbury sy	11	H	1
J149	Cummings, Jno	Saulsbury sy	8	F	1
J150	Challoner, Thos	Saulsbury sy	N half 25	F	1
J152	Clark, John R	s North	parts 7, 8	F	1
158	Cummings, Thomas	con 4	part 22	F	1
J159	Corpron, William	n Front	13	H	1
193	Cameron, William	n Front	15	F	1
J196	Crealy, Truman	con 4	part 20	F	1
258	Cooper, James	4	part 21	F	1
<i>W/193</i>	<i>Cameron DM</i>	<i>N Front</i>	<i>15</i>	<i>F</i>	<i>1</i>
220	Dale, Thomas	Saulsbury sy	part 26	F	1
J224	Dell, Hiram	n Albert	26	F	1
225	Duncan, Wm	n Centre	N half 39	H	1
J235	Diggins, J. C	Saulsbury sy	A	H	1
J258	Eastman, Elijah	con 4	21	T	1
J259	Eastman, Wesley			T	1
J260	Eastman, Elijah	Rapley sy	1	H	1
261	Elliott, John	Rapley sy	part 1	F	4
262	Eakins, Joseph	Saulsbury sy	26	F	1
J263	Eakins, S. A.	s North	4	H	1
268	Edwards, H. F.	Saulsbury sy	A	F	1
259	Eastman, Chester	4	part 21	F	1
260	Elliott, John	Rapley sy	1	F	4
255	Edwards, H. F.	Saulsbury sy	A	F	1
<i>W/260</i>	<i>Elliott Charles</i>	<i>Rapley sy</i>	<i>1</i>	<i>F</i>	<i>4</i>

Roll No.	NAME.	Street or Concession.	Number of Lot or Part Lot.	Other Desc'p'n	P.
299	Frazer, Alexander ..	Saulsbury sy.....	9	F	1
312	Fawcett, W. F.....	n Front	16, 17	F	1
333	Gilzean, J. T. A.....	Saulsbury sy.....	5, 6, 7	F	1
340	Gooden, Charles	Rapley sy	1b.. ..	F	1
342	Gilley, John	n North	2	H	1
346	Greenaway, Chas ...	Rapley sy	5	F	1
368	Grist, Charles	Saulsbury sy.....	1	F	1
342	Gibson, J. ..	n North	E pt 2.....	F	1
274	Hanley, J. H.....	n North	13.....	F	1
283	Henderson, Rev.W.C.	n Front	13, 14	H	1
410	Holden, Henry	Rapley sy	7, 8	F	1
411	Hazlet, Jacob	Saulsbury sy.....	4	H	1
412	Harris, Wm	Saulsbury sy.....	3	F	1
416	Hilton, Friend	n Albert	37.. ..	F	1
429	Harris, Thomas.....	Rapley sy	7	F	1
430	Hilton, Alexander ..	s North	parts 5 and 6.....	F	1
444	Hoskin, F. L.....	n Front	13.. ..	H	1
73	Healey, James	4	part 20	F	1
473	Hawkin, David.....	s North	parts 5 and 6.....	F	1
148	James, Wm	Saulsbury sy.....	11.....	F	1
473	Kinder, Edward	s North	5 and 6	H	1
477	Keeling, Ernest.....	s North	7, 8	H	1
423	Lee, Andrew.....	} Rapley sy	3	F	1
424	Lee, A. T.			F	1
501	Lucas, W. J.....	s Front	part 6	H	1
502	Leonard, Michael....	n Centre.....	part 49	T	1
511	Lenfestey, John	s Front	9, 10	F	1
570	Leitch, D. L	Rapley sy	9	F	1
573	Monroe, D. W	Saulsbury sy.....	26....	F	1
574	McIntyre, Peter	Saulsbury sy.....	15, 16	F	1
579	McIntosh, J. H.....	n Front	S half 8	H	1
613	Mackintosh, Fred....	n Front	part 17	H	1
634	Macrault, J. S	n Front	part 21	H	1
645	McColl, Hugh	Saulsbury sy.....	20, 16	F	1
648	Moore, Isaac	Rapley sy	1, 2, 3, 4, 13	F	1
649	McBride, Wm	s North	13, 14, 9	F	1
652	Manson, James	Rapley sy	3	F	1
410	McLarty, Robert....	Rapley sy	7 and 8	F	1

Roll No.	NAME.	Street or Concession.	Number of Lot or Part Lot.	Other Desc'p'n	P.
J669	Nicholson, Henry....	Rapley sy	5, 6	F	1
444	Nugent, Edmund....	n Front	13.....	F	1
J675	Orchard, George	Saulsbury sy.....	1	F	1
681	O'Dwyer, Patrick....	s Front	part 13	T	1
J701	Philips, Wm.....	Saulsbury sy	B	F	1
J702	Petch, Francis	Saulsbury sy.....	17.....	F	1
J735	Robinson, R. A....	4	21.....	T	1
J754	Rapley, Lorenzo	s Front	13.....	H	1
J756	Rapley, William	Rapley sy	2	F	1
J763	Richardson, Thomas..	s Front	11.....	F	1
764	Rowland, Edward	n North	1	F	1
809	Square, Thomas	4	part 21	H	1
J811	Shephard, Wm	4	part 20	F	1
J812	Sellars, Wm	Rapley sy	6	F	1
813	Scott, Henry	w Maine.....	22.....	H	1
J816	Smith, Thomas	n North	14.....	H	1
J831	Sutherland, Robert...	s North	5, 6	H	1
J833	Smith, R. P	Rapley sy	10, 11, 12	F	1
837	Scott, C. G.....	4	part 21	F	1
J838	Snell, F. W	n Albert.....	11, 12	F	1
J839	Snell, A. F.....			F	1
887	Stevenson, Judge....	con 4	part 21	O	1
864	Thompson, James	Saulsbury sy.....	3, 13, 10.....	F	1
J865	Thompson, George ...	Rapley sy	8	F	1
J871	Thompson, Alex	n Front	14.....	F	1
872	Tucker, Titus	Rapley sy	16.....	F	1
877	Urquhart, Hector.....	n Albert.....	38	F	1
J887	Wallace, Wm	con 4	21	T	1
923	Walker, W. B.....	Rapley sy	4	F	1
J926	Woodhull, C. W....	con 4	part 20	F	1
926	Parker, Geo.....			T	1
926	Parker, Geo. jr....			T	1
928	Williston, J. K.....	con 4	part 21	F	1
929	Wiley, David	Saulsbury sy.....	12.....	F	1
930	Wray, William.....	n North	1	F	1
936	Zavitz, John	Saulsbury sy.....	14, 23, 24, 27.....	F	1

in t
rec
Rol
of t
and
oth
erro

