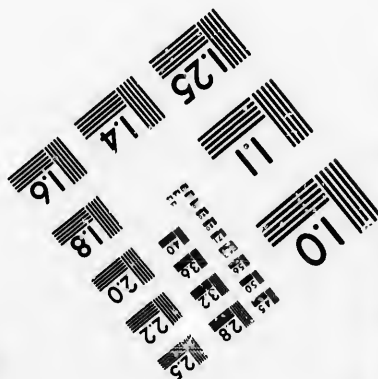
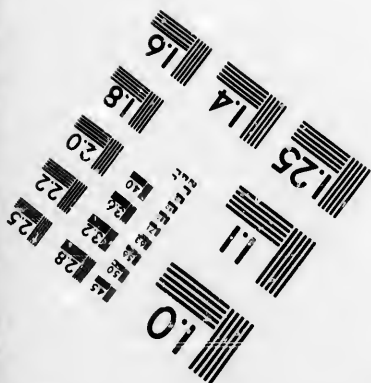
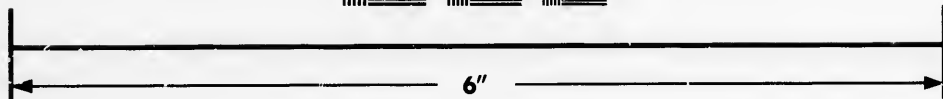
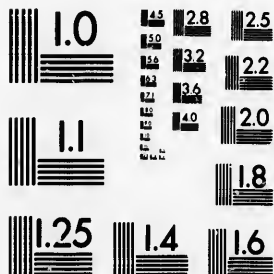


**IMAGE EVALUATION
TEST TARGET (MT-3)**



**Photographic
Sciences
Corporation**

23 WEST MAIN STREET
WEBSTER, N.Y. 14580
(716) 872-4503

**CIHM/ICMH
Microfiche
Series.**

**CIHM/ICMH
Collection de
microfiches.**



Canadian Institute for Historical Microreproductions / Institut canadien de microreproductions historiques

© 1987

Technical and Bibliographic Notes/Notes techniques at bibliographiques

The Institute has attempted to obtain the best original copy available for filming. Features of this copy which may be bibliographically unique, which may alter any of the images in the reproduction, or which may significantly change the usual method of filming, are checked below.

L'Institut a microfilmé le meilleur exemplaire qu'il lui a été possible de se procurer. Les détails de cet exemplaire qui sont peut-être uniques du point de vue bibliographique, qui peuvent modifier une image reproduite, ou qui peuvent exiger une modification dans la méthode normale de filmage sont indiqués ci-dessous.

Coloured covers/
Couverture de couleur

Coloured pages/
Pages de couleur

Covers damaged/
Couverture endommagée

Pages damaged/
Pages endommagées

Covers restored and/or laminated/
Couverture restaurée et/ou pelliculée

Pages restored and/or laminated/
Pages restaurées et/ou pelliculées

Cover title missing/
Le titre de couverture manque

Pages discoloured, stained or foxed/
Pages décolorées, tachetées ou piquées

Coloured maps/
Cartes géographiques en couleur

Pages detached/
Pages détachées

Coloured ink (i.e. other than blue or black)/
Encre de couleur (i.e. autre que bleue ou noire)

Showthrough/
Transparence

Coloured plates and/or illustrations/
Planches et/ou illustrations en couleur

Quality of print varies/
Qualité inégale de l'impression

Bound with other material/
Relié avec d'autres documents

Includes supplementary material/
Comprend du matériel supplémentaire

Tight binding may cause shadows or distortion along interior margin/
La reliure serrée peut causer de l'ombre ou de la distorsion le long de la marge intérieure

Only edition available/
Seule édition disponible

Blank leaves added during restoration may appear within the text. Whenever possible, these have been omitted from filming/
Il se peut que certaines pages blanches ajoutées lors d'une restauration apparaissent dans le texte, mais, lorsque cela était possible, ces pages n'ont pas été filmées.

Pages wholly or partially obscured by errata slips, tissues, etc., have been refilmed to ensure the best possible image/
Les pages totalement ou partiellement obscurcies par un feuillet d'errata, une pelure, etc., ont été filmées à nouveau de façon à obtenir la meilleure image possible.

Additional comments:/
Commentaires supplémentaires:

[Printed ephemera] 1 sheet, [4] p.

This item is filmed at the reduction ratio checked below/
Ce document est filmé au taux de réduction indiqué ci-dessous.

10X	12X	14X	16X	18X	20X	22X	24X	26X	28X	30X	32X
						<input checked="" type="checkbox"/>					

The copy filmed here has been reproduced thanks to the generosity of:

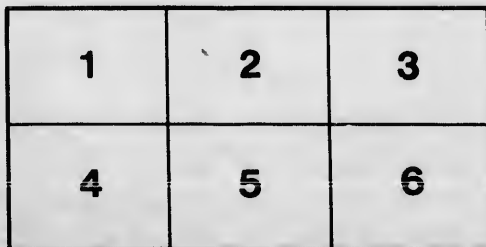
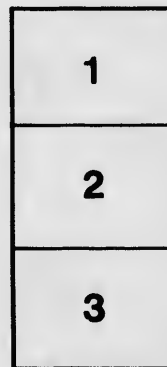
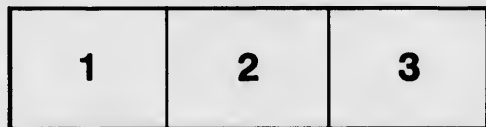
Metropolitan Toronto Library
Canadian History Department

The images appearing here are the best quality possible considering the condition and legibility of the original copy and in keeping with the filming contract specifications.

Original copies in printed paper covers are filmed beginning with the front cover and ending on the last page with a printed or illustrated impression, or the back cover when appropriate. All other original copies are filmed beginning on the first page with a printed or illustrated impression, and ending on the last page with a printed or illustrated impression.

The last recorded frame on each microfiche shall contain the symbol \rightarrow (meaning "CONTINUED"), or the symbol ∇ (meaning "END"), whichever applies.

Maps, plates, charts, etc., may be filmed at different reduction ratios. Those too large to be entirely included in one exposure are filmed beginning in the upper left hand corner, left to right and top to bottom, as many frames as required. The following diagrams illustrate the method:



L'exemplaire filmé fut reproduit grâce à la générosité de:

Metropolitan Toronto Library
Canadian History Department

Les images suivantes ont été reproduites avec le plus grand soin, compte tenu de la condition et de la netteté de l'exemplaire filmé, et en conformité avec les conditions du contrat de filmage.

Les exemplaires originaux dont la couverture en papier est imprimée sont filmés en commençant par le premier plat et en terminant soit par la dernière page qui comporte une empreinte d'impression ou d'illustration, soit par le second plat, selon le cas. Tous les autres exemplaires originaux sont filmés en commençant par la première page qui comporte une empreinte d'impression ou d'illustration et en terminant par la dernière page qui comporte une telle empreinte.

Un des symboles suivants apparaîtra sur la dernière image de chaque microfiche, selon le cas: le symbole \rightarrow signifie "A SUIVRE", le symbole ∇ signifie "FIN".

Les cartes, planches, tableaux, etc., peuvent être filmés à des taux de réduction différents. Lorsque le document est trop grand pour être reproduit en un seul cliché, il est filmé à partir de l'angle supérieur gauche, de gauche à droite, et de haut en bas, en prenant le nombre d'images nécessaire. Les diagrammes suivants illustrent la méthode.

rrata
o
pelure,
n à

Weekly Produce, Freight and Grocery Circular.

MONTREAL, 24TH SEPTEMBER, 1869.

FERRIER & CO. HARDWARE AND METAL MERCHANTS

24, 26 & 28, ST. FRANCOIS-XAVIER ST.

AGENTS FOR

The La Tortue Rope Walk, MONTREAL.
Burrell's Axe Factory,
The Windsor Powder Mill,
Johns Patent Fuse.

FLLOUR —Per barrel of 196 lbs	
Superior Extra.....	Nominal.
Extra Superfine.....	5 50 a 5 60
Fancy Superfine.....	5 10 a 5 40
City Brands of Superfine.....	Nominal.
Superfine from Canada Wheat.....	4 80 a 4 90
Strong Bakers' Flour.....	5 25 a 5 40
Superfine from Western Wheat.....	4 90 a 0 00
Supers from Western States.....	4 80 a 4 85
GRAIN —per bushel.	
Wheat, U. C. Spring.....	1 07 a 0 00
U. C. Red Winter.....	Nominal.
Chicago Spring, No. 1.....	Do.
Chicago Spring, No. 2.....	1 05 a 1 13
Milwaukee Club, No. 1.....	Nominal
Milwaukee Club, No. 2.....	1 05 a 0 00
Wheat, white, per 60 lbs.....	0 90 a 0 00
Wheat, mixed, per 50 lbs.....	0 85 a 0 90
Barley, per 48 lbs.....	0 00 a 0 00
Oats, per 32 lbs.....	0 28 a 0 40
Rye, per 56 lbs.....	Nominal.
PORK —In barrels.	
Mess, per 200 lbs.....	29 25 a 00 00
Thin Mess, ".....	00 00 a 28 00
Prime Mess, ".....	23 50 a 24 00
Prime, ".....	21 50 a 22 00
Prime, ".....	0 11 a 0 11 1/2
CHEESE —Canada Factory, per lb.....	0 00 a 0 15 1/2
LARD —In kegs, per lb.....	0 00 a 0 00
In tubs.....	0 00 a 0 9 1/2
TALLOW —In barrels, per lb.....	0 17 1/2 a 0 19 1/2
BUTTER —In kegs.....	0 19 a 0 20
Choice Dairy, per lb.....	Silver. 0 17 a 0 18
Medium.....	0 17 a 0 18
Inferior.....	Nominal
COAL —Free.	
American Anthracite per ton.....	9 00 a 9 50
Welsh, Do.....	8 00 a 8 50
Old Co. Lehigh Lump.....	10 00 n 0 00
Newcastle Grate.....	6 50 a 7 00
Lancashire do.....	0 00 a 0 00
Sydney do.....	0 00 a 0 00
Gloucester Bay Steam.....	4 75 a 4 50
Newcastle Smiths.....	6 50 a 7 00
Screenings and Inferior do.....	4 50 a 0 00
Grimsby Steam.....	None.
Grimsby Grate.....	0 00 a 0 00
Scotch Steam.....	5 25 a 5 50
Liverpool Steam.....	5 00 a 4 75
Pictou and Sydney Steam.....	4 25 a 4 50
English Coke.....	10 00 a 10 50
COFFEE —Duty 3 cents per lb.	
Laguayra, Green per lb.....	0 16 1/2 a 0 17
Maracaibo.....	0 17 a 0 18
Jamaica.....	0 16 a 0 18
Java.....	0 25 a 0 28
Rio.....	0 14 1/2 a 0 15
Cape.....	0 15 1/2 a 0 16
FRUIT —Duty 15 per cent.	
Malaga Raisins, Bunch.....	None.
Layer do, new.....	1 70 a 1 90
Valencia do, per lb.....	0 07 a 0 07
Sultana, do.....	0 a 0 108

M. Raisins, Seedless.....	per lb.	0 0 a 0 0
Almonds, Langnedoc.....	0 18 a 0 19	
Almonds, Tarragona.....	0 18 a 0 20	
Almonds, Ivica.....	0 17 a 0 18	
Corrants Old.....	0 00 a 0 00	
New.....	0 04 a 0 05	
Fig drums and boxes.....	0 00 a 0 00	
Figs, new, drums and boxes.....	0 11 a 0 13	
Nuts, Filberis.....	0 07 a 0 09	
Walnuts.....	0 06 a 0 10	
Brazil Nuts, new.....	0 00 a 0 00	
Sardines, halves and quarters.....	0 11 1/2 a 0 18 1/2	
FISH —Duty 1 cent per lb.		
Table fish, Prime.....	per qtl.	4 50 a 4 75
Herrings, Labrador.....	per brl.	4 50 a 5 00
Round Herrings.....	"	0 00 a 0 00
Bay of Island.....	"	3 00 a 4 00
Mackerel, No. 1.....	"	0 00 a 0 00
Mackerel, No. 2.....	"	0 00 a 0 00
Mackerel, No. 3.....	"	0 00 a 0 00
Salmon, No. 1.....	"	13 00 a 14 00
Green Codfish.....	"	2 75 a 3 00
DRUGS —		
Arrowroot per lb.....	0 15 a 0 60	
Borax, Refined.....	0 16 1/2 a 0 18	
Cam Tartar, Crystals.....	0 23 1/2 a 0 24	
Do, Ground.....	0 25 a 0 26	
Caustic Soda.....	0 3 1/2 a 0 3 1/2	
Senn., East India.....	0 12 1/2 a 0 15	
Sugar of Lead.....	0 14 a 0 16	
Liquorice Paste.....	0 14 1/2 a 0 25	
Bleaching Powder per ca.....	2 1/2 a 0 a 0 3 1/2	
Madder per lb.....	0 15 a 0 16	
Alum.....	250 a 2 75	
Copperas.....	0 00 a 1 00	
Blue Vitriol per lb.....	0 7 a 0 9	
Soda, Ash per cwt.....	2 25 a 2 50	
Carbonate of Soda per cwt.....	3 15 a 3 25	
Sulphur.....	3 50 a 3 80	
Epsom Salts.....	2 75 a 3 00	
Crystal Soda.....	1 40 a 1 50	
Saleratus per 100 lbs.....	0 00 a 0 00	
Saltpetre per cwt.....	7 25 a 7 50	
INDIGO —Duty free.		
Madras.....	per lb.	0 90 a 1 00
MOLASSES —Duty 73 and 55 cents per 100 lbs.		
Barbadoes.....	per gal.	0 42 1/2 a 0 45
Trinidad.....	0 40 a 0 45	
Clayed.....	0 35 a 0 37 1/2	
Centrifugal.....	0 29 a 0 3 1/2	
MUSTARD —Duty 15 per cent.		
Durham, jars.....	per lb.	0 18 a 0 00
Durham, 1/2 lb. and 2 lb. bottles.....	per doz.	2 55 a 2 80
Coleman's.....	per lb.	0 18 a 0 19
NAVAL STORE —Dry free and 15 per cent.		
Tar (Coal).....	per bbl.	0 00 a 3 00
Tar (Pine).....	3 75 a 4 00	
Pitch.....	3 50 a 3 75	
Rosin.....	2 75 a 4 00	
Turpentine (Spirits).....	per gal.	0 47 1/2 a 0 00
OILS —Duty free, 10 and 15 per cent.		
Linseed, Raw, in brls Montreal.....	0 72 1/2 a 7 77 1/2	
" Coid.....	0 77 1/2 a 0 82 1/2	
" Raw, " English.....	0 72 1/2 a 0 77 1/2	
" Boiled.....	0 77 1/2 a 0 82 1/2	
Olive.....	1 20 a 1 25	
Winter Bleach 1 Whalc.....	0 80 a 0 85	
Whale Oil, Crude.....	0 60 a 0 65	
Solar Sperm.....	1 20 a 0 00	
Cod.....	0 57 1/2 a 0 60	
Seal, Pale.....	0 72 1/2 a 0 75 1/2	
Seal, Steam Refined.....	0 75 a 0 77 1/2	
Seal, Steam Refined.....	0 62 1/2 a 0 65	
Seal, Straw.....	0 00 a 0 00	
No. 1 Lard Oil.....	0 00 a 0 60	
No 2.....	0 65 a 0 70	
"Bon's" Machinery.....	per lb.	0 08 1/2 a 0 9
Palm.....	1 00 a 0 00	
Sax's Heavy Engine Oil.....	1 00 a 0 00	

Mason's Patent Sperm.....	1 30 a 0 00	
Winter Pressed Sperm Oil.....	2 25 a 2 50	
Keosene.....	per gal.	0 00 a 0 00
Petroleum, Refined.....	0 27 1/2 a 0 30	
PAINTS—Duty 15 per cent.....	0 05 a 0 07 1/2	
Venetian Red.....	per 100 lbs.	2 25 a 2 50
Puty, bulk.....	0 0 a 0 00	
Do, bladder.....	0 0 a 0 00	
Dry White Lead.....	per 100 lb.	0 00 a 7 50
Do do genuinc.....	per keg.	0 00 a 8 50
Dry Red Lead.....	6 75 a 7 00	
White Lead, No. 1.....	2 40 a 2 50	
Do do No. 2.....	2 20 a 2 25	
Do do No. 3.....	2 00 a 0 00	
ROPE —Duty 15 per cent.		
Russian Tarred.....	per lb.	0 11 1/2 a 0 12
Do Bolt do.....	0 12 1/2 a 0 13	
Manilla, all sizes.....	per lb.	0 14 1/2 a 0 15
Russian Deep Sea Line.....	0 15 a 0 16	
Tube do do.....	0 11 a 0 12	
RICE —15 per cent.		
Arracan.....	per 100 lb.	3 40 a 3 50
Rangoon.....	3 10 a 3 30	
STARUCH —Duty \$2.00 per 100 lbs.		
Canada.....	per lb.	0 09 1/2 a 0 00
America.....	0 06 a 0 09	
English.....	0 12 a 0 14	
SPICES —Duty 15 and 25 per cent.		
Cassia.....	per lb.	0 32 a 0 35
Gloves.....	0 11 a 0 12 1/2	
Nutmegs.....	0 42 1/2 a 0 55	
Ginger, ground.....	0 17 a 0 22	
Ginger, Jamaica.....	0 17 1/2 a 0 19	
Pimento.....	0 08 a 0 09	
Pepper, Black.....	0 10 a 0 11	
SUGAR —Duty 1c per lb. and 25 p.c. ad val.		
Porto Rico.....	per 100 lbs.	8 50 a 9 75
Cuba.....	8 75 a 9 25	
Barbadoes.....	8 00 a 9 50	
Canada Sugar Refinery Prices, 1c per lb. and 25 p. c. ad val.		
Loaves, in tres 400 lbs.....	0 12 1/2 a 0 00	
Dry Crushed, in brls 100 lbs.....	0 12 1/2 a 0 00	
Ground, for table use, in brls, 200 lbs.....	0 12 1/2 a 0 00	
Extra Ground, for confectionery, in brls, 200 lbs.....	0 13 1/2 a 0 00	
Crushed A or White Bastard, in brls 200 lbs.....	0 11 1/2 a 0 00	
Yellow Refined No. 2.....	0 09 1/2 a 0 10	
" 2 1/2.....	0 09 1/2 a 0 00	
" 3.....	0 9 1/2 a 0 00	
Standard Syrup, per gal.....	0 46 a 0 00	
Golden.....	0 50 a 0 00	
Amber.....	0 76 a 0 00	
TEAS —Duty 15 per ct. & 7 cts. specific on Green and 3 cts. for Black.		
GENUINS —Imperial..... per lb. 0 45 a 0 80		
Gunpowder.....	0 50 a 0 95	
Hyson, Old.....	0 45 a 0 77	
Hyson, Young.....	0 42 1/2 a 1 00	
Twankay.....	0 40 a 0 49	
Hyson, Twankay.....	None.	
Congou.....	0 40 a 0 85	
Souchong.....	0 35 a 0 80	
Oolong.....	0 35 a 0 55	
Japanese, Unco. ed.....	0 42 1/2 a 0 65	
Japan, Colo ed.....	0 42 1/2 a 0 80	
CANTONS —Gunpowder..... per lb. 0 25 a 0 45		
Hyson Skin.....	0 25 a 0 35	
Young Hyson.....	0 37 a 0 40	
TOBACCO —Duty, 5, 10, and 15 cts. per lb.		
Canadian 10's, Western.....	in bd.	0 13 a 0 15
Do, No. 10.....	0 14 a 0 21	
Do, Solace.....	0 22 a 0 26	
American 10's.....	duty paid.	0 00 a 0 00
Do, Black.....	0 30 a 0 35	
VINEGAR —5 cts. per gal.		
English.....	per gal.	0 35 a 0 00
Bordcaux.....	0 30 a 0 00	

REVIEW OF THE WHOLESALE GROCERY MARKET.

Contrary to expectations, business has been quiet. This is chiefly owing to the auction sales advertised for the coming week, buyers in the West being so accustomed to hold off in their orders at this season, in expectation of how the auctions will result. From the scarcity of stocks in the Dominion generally, we can reasonably expect that a full range of prices will obtain, especially as the harvest has been fully up to expectations, and so far farmers are obtaining very fair prices for their produce; this will enable them to pay up all indebtedness to the storekeepers, and thus relieve the latter of their liabilities to the city merchants.

COAL—We have little change to note in our coal market. American anthracite is very unsettled, and few transactions have taken place. In other coals little has been done, and no change in our quotations.

COFFEE—Business has been very quiet; our quotations are fully maintained; say Laguayra 16½ to 17c; Maracaibo, 17 to 18c; Jamaica, 16 to 18c; Java, 25 to 28c; Rio, 14½ to 15c.

CORKS—Fair demand at Wine, \$1 to 1.50; Beer, 35 to 40c; Soda, 40 to 50c; Phial, 12½ to 15c per gross.

FRUIT—The market here has ruled very steady, though sales have been light; prices are fully maintained. By last reports from the London market, prices there are held very firm in consequence of the known short crops in the fruit-producing countries. In view of these reports and the approaching fall sales, neither sellers nor buyers are inclined to operate, the latter only purchasing for immediate wants.

DRECS, DYES AND CHEMICALS—The market for last week more active for Caustic Soda and Soda Ash; about 200 drums of the former were sold at 3½c for White, and 2½c for this week 150 drums have been sold at the same price. Soda Ash: A sale was made of about 60 tons at \$1.80 per 100 lbs.

There has been some sales of Bl-Carb, say 500 kegs, at 3½c; but since those have been made the market is effected much better, \$3.20 to 3.25 being asked. That ordered now from home would cost \$3.50.

FISH—We have no change to report in the Fish Market, which remain unaltered at last week's quotations.

GLASS—There is rather more demand, and our quotations are fully maintained.

MOLASSES—Stock nearly exhausted; prices have advanced 2c per gallon. We quote Centrifugal, 32 to 34c; Clayed, 38 to 42c; Trinidad, Barbadoes and Cienfuegos, 46 to 50c per gallon. Syrups are in good demand at our extreme rates.

NAVAL STORES—There is no change in Spirits Turpentine. The demand still continues good, with stocks sufficient for present wants; 47½c is the ruling figure. Rosins move pretty freely at \$2.75 for Strained, 3.25 for No. 2, 3.75 for No. 1, and 4.50 to 6.50 for Pale and Extra. Pine Tar and Pitch unchanged. Coal Tar and Pitch are in request at \$3.

OILS—The market is bare of cod oil, which is in demand at 57 to 58c. No change in other fish oils. Olive oil remains the same as in our last report.

PETROLEUM—Demand very quiet at 30c in jobbing lots.

PAINTS—There is a good enquiry at Dry White Lead, per 100 lbs, \$7.50; Dry Red Lead, \$6.75 to 7.00; White Lead, No. 1, per keg, \$2.40 to 2.50; do No. 2, \$2.20 to 2.25.

RICE—We have no change to make in our last week's quotations, at which there is a fair demand.

SALT—The market for Liverpool coarse has been heavy and drooping since our last report. We note sales of 2,000 bags at 60c and 1,000 at 61c, both with several lots of 200 to 500 bags at 62½c to 63½c, and retail lots at 65c, all afloat.

We note several cargoes going into store and withdrawn from the market for the present. Pine remains, as in our last, 77½ to 80c, according to size of lots.

SPICES—We have to record a fair demand for the leading spices, and our quotations are fully maintained.

SUGAR—We have had an animated demand this week, with large sales to the refiners on private terms. Prices have advanced ½c per lb, with a strong upward tendency, it being estimated that the deficiency in the crop this year will amount to 300,000 tons, and the troubles continuing in Cuba are likely to decrease the crop next year one-half. Our quotations are 8½ to 9½c for fair to good Cuba; 9½ to 9½c for Porto Rico and Barbadoes; little to be had at inside figures. Refined have advanced ½c per lb during the week. Loaves are selling at 12½c; Dry Crushed 12½c; Extra Ground 13½c; Crushed A 11½c; Yellow refined 9½ to 10c. At these prices there is an active demand.

TEAS—A steady consumptive demand continues, and a fair jobbing trade has been done for the past week in all descriptions. Prices continue firm for desirable grades of green, twankays tend upwards, Japan without change. Sales in wholesale parcels are restricted, and the market will probably remain quiet until public sale advertised for Wednesday next.

TOBACCO—The market is very firm for all grades, and extreme prices are demanded; transactions however, during the week have been light, buyers not being willing to fully give into the views of sellers. We do not alter our quotations.

WINES & LIQUORS—The market is exceedingly dull, and we have nothing to add to our remarks of last week.

Imports of following Groceries for eight months ending 31st August, 1869, as compared with the same period, 1868:

1869.		
	Quantity.	Value.
Sugar, lbs.....	47481039	\$2218573
Molasses, gal.....	14426313	549477
Melada, lbs.....	27958769	509712
Tea black, lbs.....	851893	239011
" green, ".....	5310659	1767044
Dried Fruit and Nuts.....	6417706	356407
1868.		
Sugar, lbs.....	2340475	1114817
Molasses, gal.....	4675731	114648
Melada, lbs.....	10503524	389238
Tea black, lbs.....	205492	67913
" green, ".....	2022430	701900
Dried Fruit and Nuts.....	1985633	77700

MONTREAL WHOLESALE PRODUCE MARKET.

Business during the week has been more than usually quiet. There has been no excitement in the English markets, and the consequence is that trade here has felt the prevailing dullness.

FLOUR—The market is very quiet, and prices during the week have steadily declined. For Strong Bakers' there has been an average demand at comparatively full prices; this is owing to the scarcity of such brands, spring wheat being very low in stock, and other qualities of wheat which have been used to use up with it not suiting the purpose, a low grade of flour has been produced, which only commands low prices. The supply of ordinary grades Supers has been in excess of the demand, and consequently prices have ruled low. There is no enquiry for shipment, and stocks are accumulating. The general impression is that a further considerable decline must be submitted to before the bottom is touched, and holders would willingly place their stocks at present rates, but buyers are cautious; sales, therefore, are confined to local wants, and consequently, unless cable reports are more favorable from Europe, great dullness or a decline must be expected. We note sales to-day of 500 brls Wel-

land Canal at \$1.80, and a few hundred barrels ordinary Canadas at same price. We also hear of a sale of 1,000 brls at \$4.70 to arrive. Strong Flour not in so much demand, and lower prices would be taken. Fancy and Extra are nominal at quotations; 600 brls No 2 brl worth \$1.50 this afternoon.

WHEAT—The receipts have been very large, about 102,000 bushels having arrived to-day. The bulk is of Red Winter, which is at present difficult to sell, owing to the condition in which it comes forward. U. C. Spring is very scarce, and would sell at full prices. The market is very quiet; the advance in the price of gold and difficulty in selling exchange has nearly put a stop to operations. We note the sale yesterday of a cargo of Chicago No. 2 at \$1.05, and to-day a cargo of Milwaukee No. 2 at \$1.02½; 4,000 bush of Illinois No. 2 Red Winter at \$1.05. These sales, however, could not be repeated, as it can be laid down from the West at 4 cents under the inside price. U. C. Spring nominal.

CORN—There is nothing doing; price, consequently, are pure y nominal.

PEAS—The small lots that have come forward have not been up to the average; they are worm-eaten and light, consequently no price has been fixed. The general opinion is that the crop will not be over an average, and the price will therefore depend on any deficiency in Great Britain.

BARLEY—Only small lots arriving, but no prices fixed; 68c to 70c is paid, but the probability of the crop being large, although the quality is not up to the usual mark, it is impossible to predict what will be the rates. This is a question that entirely depends on the demand from the States.

OATS—At present the prices fluctuate according to the quality brought to market. The stock of old being entirely exhausted, that of new coming in from the country is very uncertain. There is no doubt that the crop is very heavy, and receipts likely to be large, so that unless there is a good demand from England prices must rule low.

We give the imports and exports of Flour and Grain at this port from 1st Jan. to the 23rd Sept., for the last four years:

	IMPORTS.			
	1869.	1868.	1867.	1866.
Flour, brls.....	575916	463019	426520	429554
Wheat, b.s.....	4651911	1155572	867293	463168
Oat, bus.....	151522	940419	773710	1683244
Barley, bus.....	10018	30176	44480	22366
Peas, bus.....	743815	194230	930596	603884
Oats, bus.....	15583	86254	193347	635255

	EXPORTS.			
	1869.	1868.	1867.	1866.
Flour, brls.....	360904	159667	97388	106745
Wheat, b.s.....	3527229	536484	255611	2903
Corn, bus.....	72698	693424	654939	1238606
Barley, bus.....	179	4625	101059	1833
Peas, bus.....	231760	303756	1062287	679200
Oats, bus.....	36141	449675	490989	2742857

PORK—Business continues dull, there being no stock in the market; some few lots drop in from the West, but not enough sufficient for the local demand. Mess pork is firmly held at \$29 to 29.25; Thin Mess none here, worth \$28.50; Prime Mess and Prime, nominal at our quotations.

CUT MEATS—We have a very dull week to report; canvassed hams 15c to 18c; plain do 13c.

BEEF—Nothing doing.

LARD—There is an active demand for tubs at 16c.

TALLOW—Quiet at 8½c to 9c.

BUTTER—During the early part of the week the market ruled a little easier, but it has recovered a firmer tone during the past day or two, and all fine lots sell readily on arrival at 18c, and medium to good at 18c to 18½c. The stock of choice dairy for our city trade is unusually light, for this season of the year, and all nice lots sell readily at 20c to 21c silver. It

ed barrels
e also hear
re. Strong
wer prices
e nominal
\$4.50 this

very large,
nd to-day.
at present
in which
ery scarce,
market is
ce of gold
ns nearly
e sale
2 at \$1.05.
No. 2 at
nd Winter
uld not be
the West
C. Spring

rice, con-
come for-
age; they
nently no
opinion is
erage, and
y deficient

ng, but no
the proba-
hough the
is impos-
s. This is
he demand

ctuate ac-
rket. The
ed, that of
ery uncer-
op is very
e, so that
n England

of Flour
to the 23rd

1866.
20 429554
93 463168
10 1683244
80 223666
96 603884
47 635255

7. 1866.
88 105745
11 2903
39 1238606
59 1833
87 679200
89 2742857

ere being
ts drop in
fficient for
nly held at
rth \$28.50;
our quota-

ll week to
; plain do

d for tubs

of the week
but it has
past day of
arrival at
18 1/2c. The
le is unusu-
ar, and all
silver. It

would be advisable for parties in the West to forward their stocks to market, so as to realize at those prices, as the probability is that we will be supplied at lower figures shortly, by the farmers from the surrounding districts.

CHEESE—The demand keeps good and shippers show considerable eagerness to buy, and for choice factories pay 11 1/2c to 11 3/4c. No accumulation of stock.

EGGS—The market remains firm at 16c with an upward tendency.

ASHES—There has been a slight decline in Pots during the week; the opening prices were \$5.60 to \$6.2 1/2 for first sort, but the continued fall in exchange added to the scarcity of freight by steamer, has unfavourably affected the market, and several parcels of ordinary tares have been sold as low as \$5.55, and the market closes quiet. Seconds have declined, and a few small bills have been sold at \$4.5 to 4.80, at which there is a fair demand. Of this only five barrels have been placed during the week at \$4.30. Pearls are firm at \$5.70 for first sort, and \$5.20 for seconds; transactions are very limited. The receipts of the week have been 425 barrels Pots and 60 barrels Pearls. The deliveries:

	Pots.	Pearls
To Liverpool per S.S. European...	0	100
To Glasgow per S.S. St. David...	234	0
To United States per G.T. Railway	26	9
Total.....	260	109

And the stock in store at six o'clock this evening was 1724 brls. Pots, and 892 brls. Pearls

FREIGHTS.

The market for freight has been very dull, and we have no change to note in those to Great Britain:

Flour to Halifax 25c; to St. Johns, Nfld. 50c; to Pictou 40c; to Bathurst 50c; to Prince Edward Island 45c to 50c; Lumber to Boston \$6; to Monte Video \$18 to \$20; Coal from Pictou \$2 per chal.

REVIEW OF THE LEATHER MARKET.

Prices of leather:

Spanish No. 1.....	0 21 a 0 22 1/2
No. 2.....	0 19 a 0 20
Slaughter do, No. 1.....	0 24 1/2 a 0 25
Harness.....	0 26 a 0 27
Upper Waxed.....	0 38 a 0 40
Waxed Calf.....	0 50 a 0 65
Buffed Cow.....	0 14 1/2 a 0 15
Pebbled do.....	0 14 a 0 15
Splits large.....	0 23 a 0 27
Patent.....	0 19 a 0 19 1/2
Enamelled.....	0 18 1/2 a 0 19

There has been some movement in Sole Leather since our last, the sales, however, be-

ing chiefly to outside buyers, and at low rates. Stocks of Sole are now very light, and with the usual fall country demand prices may stiffen.

Little doing in Slaughter Sole, which principally moves off in retail parcels.

Harness is enquired for, and prime stock of 17 to 18 lbs. average would find ready sale.

Other descriptions of black leather remain about the same.

Some of the shoe operatives belonging to the St. Crispin Society have resigned their membership and resumed work.

IRON AND HARDWARE.

IRON, Pig, Gartsherrie, No. 1.....	22 50	23 00
Older.....	21 00	21 50
Other brands, No. 1.....	20 50	21 00
" No. 4.....	None	
Bar, Scotch.....	45 00	47 00
Bar, Refined.....	56 00	60 00
Bar, Swedes.....	85 00	100 00
Hoop and Band.....	56 00	00
Boller Plates.....	60 00	62 00
Canada Plates, per box—		
Staffordshire.....	3 25	3 50
Swansea & other brands	3 75	4 00

CUT NAILS, Assorted, 1/4 Shun- gle, per 100 lbs.....	2 65	2 70
Shingle alone, ditto.....	2 10	3 00
Lathe and 5 dy.....	3 10	3 20

HORSE NAILS—Patent ham- mered, usual disc't's—		
No. 7.....	0 20	0 00
8.....	0 19	0 00
9.....	0 18	0 00
10.....	0 18	0 00

HORSE NAILS, Pointed and fin- ished, same discount as ham- mered.		
No. 7.....	0 23	0 00
No. 8.....	0 22	0 00
No. 9.....	0 21	0 00
No. 10.....	0 21	0 00

BLOCK TIN, "Lamb & Flag".....	0 32	0 35
TIN PLATES—Charcoal 10.....	8 25	8 50
IX.....	10 25	10 50
DC.....	7 25	7 50
DX.....	9 25	9 50
IC, Terne.....	7 25	7 50
IX do.....	9 25	9 50
IC, Coke.....	7 25	7 50

CORDAGE—Manilla, per lb.....	0 14 1/2	0 15
PRESSED SPIKES,		
Regular sizes, 112 lbs.....	3 50	3 60
Railway " ".....	4 00	4 20
POWDER, Blasting, per keg....	3 00	3 50
FF.....	4 00	4 50
WINDOW GLASS, per box of 50 feet — Common Fourth quality to 25 united inchs.	1 75	1 80
Best do do.....	1 85	1 90
CAMP OVENS and Bellied Pots, "Scotch," per 112 lbs.....	3 25	3 50

SHEET ZINC—Ordinary gauges	0 6 1/2	0 07
ANVILS, common, per lb.....	0 08 1/2	0 08
Foster or Wright.....	0 08 1/2	0 9
COPPER, Pig, per lb.....	0 23	0 24
Sheet.....	0 29	0 30

GALVANIZED IRON—		
Best No. 24.....	0 07 1/2	0 08
" 26.....	0 08	0 08 1/2
" 28.....	0 09	0 09 1/2

IRON WIRE, No. 6, per bundle..	2 40	2 50
No. 10, ".....	2 80	2 90
No. 12, ".....	3 00	3 10
No. 16, ".....	4 00	4 10

LEAD, Bar, per lb.....	0 08	0 08 1/2
Sheet, ".....	0 06 1/2	0 07 1/2
Shot, ".....	0 06 1/2	0 07 1/2
Piping, per 100 lbs.....	6 80	0 00
Hoops, Coopers, 112 lbs.....	2 80	3 00
Extra ".....	4 30	4 80

STEEL, Cast, per lb.....	0 13 1/2	
German, ".....	0 04	

The fall business has now fairly set in, and many goods are scarce owing to the late arrival of the Fall Fleet; our merchants have been very busy working extra time to enable them to fill orders now on hand, promptly. We believe there is every prospect of a continued active demand for all descriptions of goods. Heavy goods principally are being shipped in good round lots.

The importations having been light this season further orders have had to be sent to the home market for additional supplies, and as the season advances we look for better paying rates than prevail at present, higher rates of freight then prevailing will effect this.

PIG IRON—There are no stocks of "Gartsherrie" now in the market, and we believe lots to arrive are light, owing to the continued dry weather in Britain. The demand for other brands will therefore improve and we are given to understand stocks of "Eglington" and "Glengarnock" are ample for the wants of the Trade.

The rail manufacturers are busy working night and day filling orders; this looks like former good seasons, and we trust will continue.

FINANCIAL.

Sterling Exchange is very low, and the consequence is, the Banks are prevented drawing on their London bankers. Bank 60-days bills were offered to-day at 7 1/2, but the price at which sales were made ranged for the last few days at 7 1/2; for private bills 6 to 6 1/2 has been the rate. Greenback to-day brought price 29 to 30; sold 28; do. for silver 72. Exchange on New York 28 1/2. Gold drafts on do., 3 p.m., with every prospect of a rise. Silver bought 2 1/2; sold at 2 1/2 dia.

