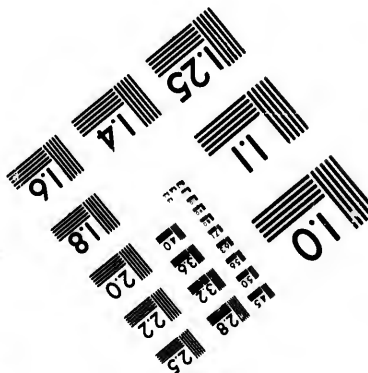
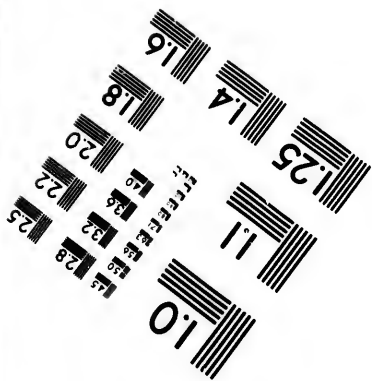
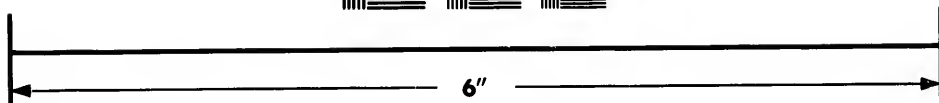
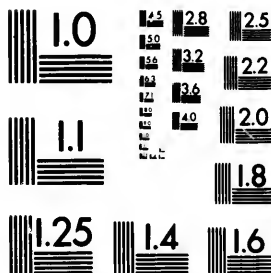


**IMAGE EVALUATION
TEST TARGET (MT-3)**



**Photographic
Sciences
Corporation**

23 WEST MAIN STREET
WEBSTER, N. Y. 14580
(716) 872-4503

**CIHM/ICMH
Microfiche
Series.**

**CIHM/ICMH
Collection de
microfiches.**



Canadian Institute for Historical Microreproductions / Institut canadien de microreproductions historiques

© 1982

Technical and Bibliographic Notes/Notes techniques et bibliographiques

The Institute has attempted to obtain the best original copy available for filming. Features of this copy which may be bibliographically unique, which may alter any of the images in the reproduction, or which may significantly change the usual method of filming, are checked below.

L'Institut a microfilmé le meilleur exemplaire qu'il lui a été possible de se procurer. Les détails de cet exemplaire qui sont peut-être uniques du point de vue bibliographique, qui peuvent modifier une image reproduite, ou qui peuvent exiger une modification dans la méthode normale de filmage sont indiqués ci-dessous.

- | | |
|---|---|
| <input checked="" type="checkbox"/> Coloured covers/
Couverture de couleur | <input type="checkbox"/> Coloured pages/
Pages de couleur |
| <input type="checkbox"/> Covers damaged/
Couverture endommagée | <input type="checkbox"/> Pages damaged/
Pages endommagées |
| <input type="checkbox"/> Covers restored and/or laminated/
Couverture restaurée et/ou pelliculée | <input type="checkbox"/> Pages restored and/or laminated/
Pages restaurées et/ou pelliculées |
| <input type="checkbox"/> Cover title missing/
Le titre de couverture manque | <input checked="" type="checkbox"/> Pages discoloured, stained or foxed/
Pages décolorées, tachetées ou piquées |
| <input type="checkbox"/> Coloured maps/
Cartes géographiques en couleur | <input type="checkbox"/> Pages detached/
Pages détachées |
| <input type="checkbox"/> Coloured ink (i.e. other than blue or black)/
Encre de couleur (i.e. autre que bleue ou noire) | <input checked="" type="checkbox"/> Showthrough/
Transparence |
| <input type="checkbox"/> Coloured plates and/or illustrations/
Planches et/ou illustrations en couleur | <input type="checkbox"/> Quality of print varies/
Qualité inégale de l'impression |
| <input type="checkbox"/> Bound with other material/
Relié avec d'autres documents | <input type="checkbox"/> Includes supplementary material/
Comprend du matériel supplémentaire |
| <input type="checkbox"/> Tight binding may cause shadows or distortion along interior margin/
La reliure serrée peut causer de l'ombre ou de la distorsion le long de la marge intérieure | <input type="checkbox"/> Only edition available/
Seule édition disponible |
| <input type="checkbox"/> Blank leaves added during restoration may appear within the text. Whenever possible, these have been omitted from filming/
Il se peut que certaines pages blanches ajoutées lors d'une restauration apparaissent dans le texte, mais, lorsque cela était possible, ces pages n'ont pas été filmées. | <input type="checkbox"/> Pages wholly or partially obscured by errata slips, tissues, etc., have been refilmed to ensure the best possible image/
Les pages totalement ou partiellement obscurcies par un feuillet d'errata, une pelure, etc., ont été filmées à nouveau de façon à obtenir la meilleure image possible. |
| <input type="checkbox"/> Additional comments:
Commentaires supplémentaires: | |

This item is filmed at the reduction ratio checked below/
Ce document est filmé au taux de réduction indiqué ci-dessous.

10X	14X	18X	22X	26X	30X
<input type="checkbox"/>	<input type="checkbox"/>	<input checked="" type="checkbox"/>	<input type="checkbox"/>	<input type="checkbox"/>	<input type="checkbox"/>
12X	16X	20X	24X	28X	32X

The copy filmed here has been reproduced thanks to the generosity of:

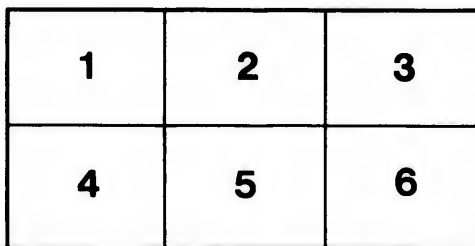
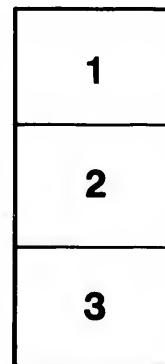
Library of the Public
Archives of Canada

The images appearing here are the best quality possible considering the condition and legibility of the original copy and in keeping with the filming contract specifications.

Original copies in printed paper covers are filmed beginning with the front cover and ending on the last page with a printed or illustrated impression, or the back cover when appropriate. All other original copies are filmed beginning on the first page with a printed or illustrated impression, and ending on the last page with a printed or illustrated impression.

The last recorded frame on each microfiche shall contain the symbol \rightarrow (meaning "CONTINUED"), or the symbol ∇ (meaning "END"), whichever applies.

Maps, plates, charts, etc., may be filmed at different reduction ratios. Those too large to be entirely included in one exposure are filmed beginning in the upper left hand corner, left to right and top to bottom, as many frames as required. The following diagrams illustrate the method:



L'exemplaire filmé fut reproduit grâce à la générosité de:

La bibliothèque des Archives
publiques du Canada

Les images suivantes ont été reproduites avec le plus grand soin, compte tenu de la condition et de la netteté de l'exemplaire filmé, et en conformité avec les conditions du contrat de filmage.

Les exemplaires originaux dont la couverture en papier est imprimée sont filmés en commençant par le premier plat et en terminant soit par la dernière page qui comporte une empreinte d'impression ou d'illustration, soit par le second plat, selon le cas. Tous les autres exemplaires originaux sont filmés en commençant par la première page qui comporte une empreinte d'impression ou d'illustration et en terminant par la dernière page qui comporte une telle empreinte.

Un des symboles suivants apparaîtra sur la dernière image de chaque microfiche, selon le cas: le symbole \rightarrow signifie "A SUIVRE", le symbole ∇ signifie "FIN".

Les cartes, planches, tableaux, etc., peuvent être filmés à des taux de réduction différents. Lorsque le document est trop grand pour être reproduit en un seul cliché, il est filmé à partir de l'angle supérieur gauche, de gauche à droite, et de haut en bas, en prenant le nombre d'images nécessaire. Les diagrammes suivants illustrent la méthode.

re
détails
es du
modifier
er une
filmage

es

errata
l to

t
e pelure,
on à



Al

[BEING
BE

Abstrac

DERI

A

CONTA

Sold b

entire

T. MCKENZIE, House, Ship, Sign, and Ornamental

Painter, 258 Water Street, Ships Figure Heads, Harness and Shoe Varnish, Pictures and Picture

THE
Newfoundland Almanac,

FOR THE YEAR OF OUR LORD

1874,

[BEING THE LATTER PART OF THE THIRTY-SEVENTH AND THE
BEGINNING OF THE THIRTY-EIGHTH YEAR OF THE REIGN
OF HER MAJESTY, QUEEN VICTORIA,]

CONTAINING

**Astronomical, Statistical, Commercial, Local and
General Information,**

DERIVED FROM THE MOST AUTHENTIC SOURCES:

ALSO,

A Post Office Directory for Newfoundland,

CONTAINING AN ALPHABETICAL LIST OF THE TOWNS, VILLAGES
AND SETTLEMENTS IN THE COLONY, WITH THE
POST TOWNS AND WAY OFFICES.

PUBLISHED BY JOHN WOODS,

Sold by THOMAS MCCONNAN, 201 Water Street, St. John's, Nfld.



ST. JOHN'S, NEWFOUNDLAND:

MDCCCLXXIII.

Framing, Paper Hangings, Paints, Oil, Turpentine,

British & American Book Store,
175 WATER STREET,
ST. JOHN'S, NEWFOUNDLAND.

J. F. CHISHOLM,

DRALER IN

Periodicals, Newspapers, Music, Charts, Nautical Works; Fishing Gear, by the best makers; Fancy Goods of every description kept constantly in stock.

A FULL LINE OF THE BEST

STATIONERY,

COMPRISING—

Ledgers, Journals, Day-books and Memorandum Books, all sizes and rulings, Copying Books, Letter Books, Music, and Drawing Books; Writing, Drawing, Music and Account Papers, Tracing Paper and Tracing Cloth; the best Writing and Copying Inks and Fluids, English French and American.

Envelopes, of every shape, size and quality, Writing Cabinets and Desks, Inkstands, Letter Clips and Paper Files, Pencil-cases and Transparent Slates, Sealing Wax, Printing and Calling Cards; a good variety of Fancy Stationery always in stock.

PLAYING CARDS.

An extensive assortment of School Books and Works on general Literature, kept in stock, the Standard Poets, with other Standard Works, in handsome bindings, suitable for Prizes and Presents.

Fortnightly Parcels received both from England and the United States.

Books, Music, or any description of Fancy Goods supplied to order, with dispatch, and at the lowest cash prices.

J. F. CHISHOLM.

THE
Newfoundland Almanac,

FOR THE YEAR OF OUR LORD

1874,

[BEING THE LATTER PART OF THE THIRTY-SEVENTH AND THE
BEGINNING OF THE THIRTY-EIGHTH YEAR OF THE REIGN
OF HER MAJESTY, QUEEN VICTORIA,]

CONTAINING

**Astronomical, Statistical, Commercial, Local and
General Information,**

DERIVED FROM THE MOST AUTHENTIC SOURCES:

ALSO,

A Post Office Directory for Newfoundland,

CONTAINING AN ALPHABETICAL LIST OF THE TOWNS, VILLAGES
AND SETTLEMENTS IN THE COLONY, WITH THE
POST TOWNS AND WAY OFFICES.

PUBLISHED BY JOHN WOODS,

Sold by THOMAS MCCONNAN, 201 Water Street, St. John's, Nfld.

ST. JOHN'S, NEWFOUNDLAND:

MDCCCLXXIII.

RARE

AY

426

2

1149N⁴

1874

Eclipses, 1874.

In this year there will be *Two Eclipses* of the Sun, and *Two* of the Moon, viz:—

I.—A *Total Eclipse* of the Sun, April 15-16, 1874, invisible at Greenwich.

Begins on the Earth generally, April 15, 23h. 48m. 2s., Mean Time at Greenwich, in Long. 79°.10' W. of Greenwich, and Lat. 38° 32' S.

Ends on the Earth generally, April 16, 4h. 13m.; in Long. 27°. 22' E. of Greenwich, and Lat. 60°. 11' S.

II.—A *Partial Eclipse* of the Moon, May 1, 1874, invisible at Greenwich.

The first contact with the Shadow occurs at 81° from the Northernmost point of the Moon's limb towards the East. The last contact at 23° towards the West; in each case for a *direct* image.

III.—An *Annular Eclipse* of the Sun, October 9-10, 1874, visible (as a *Partial Eclipse*) at Greenwich.

Begins on the Earth generally, October 9, 20h. 42m. 3s., Mean Time at Greenwich, in Long. 29°.30' W., and Lat. 60°.29' N.

Ends on the Earth generally, October 10, 1h. 33m. 3s., in Long. 60°.34' E. of Greenwich, and Lat. 10°.47' N.

IV.—A *Total Eclipse* of the Moon, October 24, 1874, partly visible as a *Partial Eclipse* at Greenwich.

The first contact with the shadow occurs at 90° from the Northernmost point of the Moon's limb towards the East. The last contact at 112° towards the West; in each case for *direct* image. At Greenwich, the Moon will set partially eclipsed

The Eclipses of Jupiter's Satellites (given in the Greenwich Almanac to the nearest tenth of one second of time) afford the easiest means of knowing the Greenwich time and thence to determine the longitude of whatever place on the globe, the observer may be situated. No calculation is required, but they cannot be observed at sea, the motion of the ship rendering it impossible to secure that steadiness of the instruments necessary to observe them.

Planetary Eclipses.

There will be a *Transit of Venus* over the Sun's disc, on December 8, 1874, invisible at Greenwich.

For *Direct Image*,
Angle from North Pole, of { first external contact 30° towards the E.
 { first internal contact 44° towards the E.
 { last internal contact 14° towards the W.
 { last external contact 20° towards the W.

The Planets of the Solar System are 29 in number. Of them 11 are *primary* and 18 *secondary* or Moons. Of these Moons, our **EARTH** has one, *Jupiter* four, *Saturn* seven, and *Uranus* six. Of the primary planets, two are called *inferior*, viz., *Mercury* and *Venus*, because they are nearer the *Sun* than the *Earth*; and others are called *superior* because further from the *Sun* than the *Earth*.

<i>Distance from the Sun.</i>	<i>Magnitude—diameters in miles,</i>	<i>Length of year.</i>
Mercury, 37 millions of miles	3,140	3 months.
Venus, 68 millions of miles	7,700	7½ do
Earth, 95 millions of miles	7,912	1 year
Mars, 142 millions of miles	4,200	2 do
Jupiter, 485 millions of miles	89,690	12 do
Saturn, 890 millions of miles	79,000	29 do
Uranus, 1,800 millions of miles	35,000	84 do

The *Solar year* is the time which the sun takes in passing over the twelve signs of the *Zodiac*, which is 365 days, 5h. 48m. 48s. The *Civil year* is 365 days 6 hours, or rather 365 days for three years in succession, and every fourth year 366 days. The *Sidereal year* is 365 days, 6h. 6m. 18.5s. The *Anomalistic year* is 365 days, 6h. 14m. The *Lunar astronomical year* is 354 days, 8h. 48m. or 12 lunations. The *anomalistic year* is an advance over the *Sidereal* or *Tropical year*, is the stellar measure of the annual advance of the whole system.

St. John's.

True Latitude of Church Hill..... 47°34' North.

Longitude (West of Greenwich)..... 52°42' West.

Variation of the Compass, 32°30' and increasing *seven seconds* annually.

NOTE—The Tide Tables (in the Calendar pages) may be rendered applicable to various other places on the coast, by simply adding or subtracting as the case may be, the difference between the times of High Water on the Full and Change of the Moon at St. John's, and the time of the full tide at any other harbor; for example, to find the time of High Water at any of the principal harbors of Conception Bay, add 45 minutes to the time at which it will be High Water at St. John's; for Placentia Bay, add 2 hours; for St. Peter's, 1h. 50m.; for Ferrolle, on the French Shore, 4 hours, &c.—See table LVII of Norie's Epitome,

JANUARY, 1874.

MOON'S PHASES,

Calculated for Mean Time at St. John's, Newfoundland.

FULL MOON.....	2nd day,	3h, 33m,	Evening.
LAST QUARTER.....	10th day,	4h, 25m,	Evening.
NEW MOON.....	18th day,	4h, 30m,	Morning.
FIRST QUARTER.....	24th day,	9h, 12m,	Evening.

Day of W.	Day of M.	Sun		G. app. time.		Equa		High Water at St. John's.	Memoranda, &c., &c.						
		rises	sets	Sun's Declination.	time.	of time.	Water at								
		h.	m.	h.	m.	°	'	m.	s.	p.	m.	a.	m.		
Th.	1	7	55	4	13	S	23	0	3	52	7	16	6	52	Circumcision
F	2	7	54	4	14		22	54	4	20	8	11	7	57	
S	3	7	54	4	15		22	49	4	48	9	22	8	58	Port Royal, Jamaica, burnt, 1703
Su.	4	7	54	4	16		22	43	5	15	10	10	9	46	
M	5	7	54	4	17		22	36	5	42	10	57	10	3	
T	6	7	54	4	19		22	29	6	9	11	42	11	18	Epiphany
W	7	7	53	4	20		22	21	6	35	0	4	11	40	St Basil's Day
Th.	8	7	53	4	21		22	13	7	0	0	58	12	34	Bat New Orleans, '15
F	9	7	53	4	22		22	5	7	25	2	1	1	37	R. C. Cathedral o. '50
S	10	7	52	4	24		21	56	7	50	3	0	2	36	Penny postage, Great Britain, 1840
Su.	11	7	52	4	25		21	47	8	14	4	13	3	49	
M	12	7	51	4	26		21	37	8	37	5	11	4	57	
T	13	7	51	4	27		21	27	9	0	6	4	5	40	
W	14	7	50	4	29		21	17	9	22	6	53	6	29	R Bruce died 1611,
Th.	15	7	50	4	30		21	6	9	43	7	43	7	19	James Watt b., 1736
F	16	7	49	4	31		20	54	10	4	8	34	8	10	Bat of Corrunna, '09
S	17	7	48	4	33		20	43	10	24	9	25	9	1	B. Franklin b., 1706
Su.	18	7	47	4	34		20	31	10	43	7	52	7	28	
M	19	7	46	4	36		20	18	11	2	8	44	8	20	D Webster b., 1782
T	20	7	45	4	37		20	5	11	20	9	32	9	8	
W	21	7	44	4	38		19	52	11	37	10	18	9	54	
Th.	22	7	44	4	40		19	38	11	53	11	5	10	41	Byron born, 1783
F	23	7	43	4	42		19	24	12	9	11	56	11	32	Wm Pitt died, 1806
S	24	7	42	4	43		19	10	12	24	12	58	12	34	Fox born, 1749
Su.	25	7	41	4	45		18	55	12	38	1	53	1	29	Conversion St. Paul
M	26	7	40	4	46		18	40	12	51	2	41	2	17	Dr Jenner died, 1823
T	27	7	38	4	48		18	25	13	3	4	20	3	56	Mozart died, 1756
W	28	7	37	4	49		18	9	13	14	5	7	4	43	Colonial Building opened, 1850
Th.	29	7	36	4	51		17	53	13	25	6	11	5	47	
F	30	7	35	4	52		17	37	13	35	7	6	6	42	
S	31	7	33	4	54	S	17	20	13	44	8	9	7	45	

MISTS.—A white mist in the evening over a meadow with a river, will be drawn up by the sun next morning, and the day will be bright. Five or six fogs successively drawn up, portend rain. Where the mist which hangs over low lands, draws towards high hills in the morning, and rolls up to the top, it will be fair; but if the mist hangs upon the hills, and drags along the woods, there will be rain.

MARCH, 1874.

MOON'S PHASES,

Calculated for Mean Time at St. John's, Newfoundland.

FULL MOON.....	3rd day,	1h, 51m,	Morning.
LAST QUARTER.....	11th day,	6h, 3m,	Morning.
NEW MOON.....	18th day,	2h, 37m,	Morning.
FIRST QUARTER.....	24th day,	1h, 1m,	Evening.

Day of W.	Day of M.	Sun		G. app. time.		High		Memoranda, &c., &c.
		rises	sets	Sun's Declination.	Equa of time.	Water at St. John's.		
		h. m.	h. m.	° ' "	m. s.	h. m.	a. m.	
Su.	1	6 46	5 39	S 7 31	12 32	3 2	7 38	St David
M.	2	6 44	5 41	7 8	12 20	8 41	8 17	J Wesley died, 1791
T.	3	6 42	5 42	6 45	12 7	9 17	8 53	
W.	4	6 40	5 44	6 22	11 54	9 50	9 26	
Th.	5	6 33	5 45	5 59	11 40	10 24	10 00	
F.	6	6 36	5 47	5 36	11 26	11 00	10 36	
S.	7	6 34	5 48	5 13	11 12	11 39	11 15	
Su.	8	6 32	5 50	4 49	10 57	12 31	0 7	William III d., 1702
M.	9	6 30	5 51	4 26	10 41	1 18	0 51	
T.	10	6 28	5 53	4 3	10 26	2 35	2 11	Prince Wales married, 1803
W.	11	6 26	5 54	3 39	10 10	3 38	3 14	
Th.	12	6 24	5 56	3 15	9 54	5 4	4 40	
F.	13	6 22	5 57	2 52	9 37	6 12	5 48	
S.	14	6 20	5 58	2 28	9 21	7 9	6 45	
Su.	15	6 18	5 59	2 4	9 4	8 32	8 8	Caesar assassinated BC, 44
M.	16	6 16	6 1	1 41	8 46	8 54	8 30	
T.	17	6 14	6 3	1 17	8 29	9 35	9 11	St Patrick's Day
W.	18	6 12	6 4	0 53	8 11	7 56		
Th.	19	6 10	6 6	0 39	7 54	8 41	8 17	
F.	20	6 8	6 7	S 0 6	7 36	9 24	9 0	Sir Isaac Newton d., 1726
S.	21	6 6	6 8	N 0 17	7 18	10 12	9 48	
Su.	22	6 4	6 10	0 40	6 59	11 5	10 41	
M.	23	6 2	6 11	1 4	6 41	12 6	11 42	
T.	24	6 0	6 13	1 28	6 23	12 44	0 20	Q Elizabeth d., 1603
W.	25	5 58	6 14	1 51	6 4	1 51	1 27	Annunciation—Lady Day
Th.	26	5 56	6 16	2 15	5 46	3 24	3 00	
F.	27	5 54	6 17	2 38	5 27	4 51	4 27	
S.	28	5 52	6 18	3 2	5 9	5 56	5 32	Raphael born, 1483
Su.	29	5 50	6 20	3 25	4 50	6 48	6 24	Palm Sunday
M.	30	5 48	6 21	3 48	4 32	7 30	7 6	Treaty of Peace with Russia, 1856
T.	31	5 46	6 23	N 4 12	4 13	8 1	7 37	

fly underneath, they are a sure sign of rain, and probably will be lasting. Two currents of clouds always portend rain, and in summer, thunder.

Dew.—If the dew lies plentifully on the grass after a fair day, it is a sign of another. If not, and there is no wind, rain must follow. A red evening portends fine weather; but if it

APRIL, 1874.

MOON'S PHASES,

Calculated for Mean Time at St. John's, Newfoundland.

FULL MOON..... 1st day, 7h, 49m, Evening.
 LAST QUARTER 9th day, 6h, 50m, Evening.
 NEW MOON 16th day, 10h, 22m, Morning.
 FIRST QUARTER..... 23rd day, 8h, 33m, Morning.

Day of W.	Day of M.	Sun		G. app. time.		High		Memoranda, &c., &c.
		rises	sets	Sun's Declination.	Equa of time.	Water at St. John's.		
		at St. John's.	at St. John's.	° /	m. s	p. m.	a. m.	
W	1	5 44	6 24	N 4 35	3 55	8 41	8 17	
Th.	2	5 42	6 25	4 58	3 37	9 15	8 51	
F	3	5 40	6 27	5 21	3 19	9 48	9 24	Good Friday
S	4	5 38	6 28	5 44	3 1	10 24	10 0	
Su.	5	5 36	6 30	6 7	2 43	11 4	10 40	Easter Sunday
M	6	5 34	6 31	6 29	2 26	11 50	11 26	Goldsmith born 1774
T	7	5 32	6 32	6 52	2 8	12 45	0 21	Wordsworth b., 1770
W	8	5 31	6 33	7 14	1 51	1 43	1 19	
Th.	9	5 28	6 35	7 37	1 34	3 16	2 52	
F	10	5 26	6 36	7 59	1 18	4 43	3 19	Lord Bacon d., 1626
S	11	5 24	6 38	8 21	1 2	5 55	5 31	
Su.	12	5 22	6 39	8 43	0 46	6 51	6 27	Low Sunday
M	13	5 20	6 41	9 5	0 30	7 47	7 23	Catholic Emancipation, 1829
T	14	5 18	6 42	9 26	0 15	8 25	8 00	Franklin died, 1790
W	15	5 16	6 44	9 48		9 9	8 45	Bat of Culloden, 1746
Th.	16	5 15	6 45	10 9	0 14	9 53	9 29	Shakspeare b., 1564
F	17	5 15	6 46	10 30	0 28	8 17		
S	18	5 11	6 48	10 51	0 42	9 3	8 49	
Su.	19	5 9	6 49	11 12	0 55	9 54	9 30	Byron died, 1824
M	20	5 7	6 50	11 33	1 8	10 48	10 24	12—Lincoln assassinated, 1865.
T	21	5 5	6 52	11 53	1 21	11 49	11 25	
W	22	5 4	6 53	12 14	1 33	12 34	0 10	
T	23	5 2	6 54	12 34	1 45	1 25	1 1	St George
F	24	5 0	6 56	12 54	1 56	2 26	2 2	Cromwell b., 1599
S	25	4 58	6 57	13 13	2 7	4 10	3 46	St Mark
Su.	26	4 56	6 59	13 33	2 18	5 17	4 53	Plague of London, 1655
M	27	4 55	7 0	13 52	2 28	5 53	5 29	
T	28	4 53	7 2	14 11	2 37	6 51	6 27	
W	29	4 51	7 3	14 29	2 46	7 28	7 4	Joan of Arc enters Orleans, 1429
T	30	4 50	7 4	N 14 48	2 54	8 54	8 30	

Equation of time to be subtracted from apparent time to the 15th, and to be added the remainder of the month.

spread too far upward from the horizon in the evening, and especially morning, it foretells wind or rain, or both. When the sky, in rainy weather, is tinged with sea green, the rain will increase; if deep blue, it will be showery.

Fu
LA
NE
Fu

Day of W.

F
S
Su
M
T
W
Th
F
S
Su
M
T
W
Th
F
S
Su
M
T
W
Th
F
S
Su

fa
de
rin
ap
za

MAY, 1874.

MOON'S PHASES,

Calculated for Mean Time at St. John's, Newfoundland.

FULL MOON.....	1st day,	6h, 39m,	Evening.
LAST QUARTER.....	9th day,	3h, 42m,	Morning.
NEW MOON.....	15th day,	6h, 46m,	Evening.
FIRST QUARTER.....	22nd day,	11h, 48m,	Evening.

Day of W.	Day of M.	Sun		G. app. line.		High		Memoranda, &c., &c.
		rises	sets	Sun's Declination.	Equa of time.	Water at St. John's.		
		h. m.	h. m.	° '	m. s.	p. m. a. m.		
F	1	4 48	7 6	N 15 6	3 2	9 11 8 16		S. S. Philip & James,
S	2	4 47	7 7	15 24	3 10	10 13 8 56		General Election, '61
Sa.	3	4 45	7 8	15 42	3 16	9 53 9 32		Gov. Darling sworn
M	4	4 43	7 10	15 59	3 23	10 38 10 16		into office, 1855
T	5	4 42	7 11	16 17	3 28	11 33 11 3		
W	6	4 40	7 12	16 31	3 33	0 8 11 59		4—Abdication of Na-
Th.	7	4 39	7 14	16 50	3 38	1 29 1 18		poleon I, 1814
F	8	4 38	7 15	17 7	3 42	3 41 2 49		5—Napoleon I. died
S	9	4 36	7 16	17 28	3 45	4 53 4 18		at St. Helena, 1821
Su.	10	4 35	7 18	17 39	3 48	5 59 5 31		6—Peace proclaimed
M	11	4 33	7 19	17 54	3 50	6 48 6 24		between the Allied
T	12	4 32	7 20	18 9	3 52	7 37 7 14		Powers and Russia,
W	13	4 31	7 21	18 24	3 53	8 21 8 12		1856
Th.	14	4 29	7 23	18 39	3 53	9 6 8 44		10—Regation Sunday
F	15	4 28	7 24	18 53	3 53	9 31		11—Massacre at
S	16	4 27	7 25	19 7	3 52	8 3		Delhi, 1857
Su.	17	4 26	7 27	19 21	3 51	9 30 8 4		12—General election
M	18	4 24	7 28	19 34	3 49	10 24 9 38		under new Consti-
T	19	4 23	7 29	19 47	3 47	10 31 9 49		tion, 1855.
W	20	4 22	7 30	20 0	3 44	11 27 10 29		Foundation st. Catho-
Th.	21	4 21	7 31	20 12	3 40	0 24 11 20		lic Cathedral laid, '42
F	22	4 20	7 32	20 24	3 36	1 9 0 45		14—Ascension Day,
S	23	4 19	7 33	20 36	3 32	1 57 1 33		Holy Thursday
Su.	24	4 18	7 34	20 47	3 27	2 35 2 11		Birth of Queen Vic-
M	25	4 17	7 35	20 58	3 21	3 13 2 59		toria. Pentecost
T	26	4 16	7 36	21 9	3 15	4 1 3 57		Sunday.
W	27	4 15	7 38	21 19	3 9	4 49 4 25		13—1st Leg. Gen. As-
Th.	28	4 14	7 40	21 29	3 2	5 27 5 3		sembly opened in
F	29	4 13	7 41	21 38	2 54	6 12 5 57		1861. Riots in
S	30	4 13	7 41	21 47	2 46	6 54 6 30		Water St. Pope
Su.	31	4 12	7 42	N 21 56	2 38	8 24 8 0		Pius IX. born 1792

HEAVENLY BODIES.—If there be a haziness in the air which fades the sun's light, and makes the orb appear whitish, or ill defined; or at night, if the moon and stars grow dim, and a ring encircles the former, rain will follow. If the sun's rays appear like Moses' horns, if white at setting, or shorn of its rays, or goes down into a bank of cloud in the horizon, bad

JULY, 1874.

MOON'S PHASES,

Calculated for Mean Time at St. John's, Newfoundland.

LAST QUARTER 6th day, 2h, 31m, Evening.
 NEW MOON..... 13th day, 0h, 57m, Evening.
 FIRST QUARTER..... 21st day, 10h, 1m, Morning.
 FULL MOON..... 29th day, 1h, 12m, Morning.

Day of W.	Day of M.	Sun		G. app. time.		High		Memoranda, &c., &c.
		rises	sets	Sun's Declination.	Equa. of time. add.	Water at St. John's		
		h. m.	h. m.	° '	m. s.	p. m.	a. m.	
W	1	4 12	7 55	N 23 7	3 23	10 11	9 47	Sir R. Peel died 1850
Th.	2	4 13	7 55	23 3	3 40	11 5	10 41	Dominion of Canada
F	3	4 13	7 54	22 58	3 51	11 56	11 32	Inaugurated, 1867
S	4	4 14	7 54	22 53	4 2	12 54	0 30	American Independence,
Su.	5	4 15	7 54	22 47	4 12	2 10	1 46	1776
M	6	4 15	7 53	22 42	4 22	3 27	3 35	5th Sunday after
T	7	4 16	7 53	22 35	4 32	4 44	4 20	Trinity. Princess
W	8	4 17	7 53	22 29	4 42	5 12	4 58	Helena marr'd '66
Th.	9	4 18	7 52	22 22	4 51	6 33	6 9	7—Free Trade Act
F	10	4 19	7 51	22 14	5 0	7 25	7 1	passed, 1855
S	11	4 19	7 51	22 7	5 8	8 36	8 12	10—Cape Ray and
Su.	12	4 21	7 50	21 58	5 16	9 28	9 4	Cape Breton elec.
M	13	4 21	7 50	21 50	5 24	10 19	9 55	cable laid, 1856
T	14	4 22	7 49	21 41	5 31	7 42		13—Havelock's vic-
W	15	4 23	7 48	21 32	5 37	8 43	8 6	tory at Paltchpore,
Th.	16	4 24	7 47	21 22	5 43	9 25	9 1	1857
F	17	4 25	7 46	21 12	5 49	10 11	9 49	Havelock retakes
S	18	4 26	7 45	21 2	5 54	10 59	10 35	Cawnpore, 1857
Su.	19	4 27	7 44	20 51	5 58	11 39	11 13	Governor Hill, C. B.
M	20	4 28	7 43	20 40	6 2	12 23	0 00	arrived, 1869
T	21	4 29	7 42	20 28	6 5	1 21	0 52	15—St. Swithen's day
W	22	4 30	7 41	20 16	6 8	2 2	1 48	
Th.	23	4 32	7 40	20 4	6 10	3 32	3 7	Prince of Wales ar-
F	24	4 33	7 39	19 52	6 12	4 15	3 49	rived at St. John's,
S	25	4 34	7 38	19 39	6 13	5 10	4 55	1860
Su.	26	4 35	7 37	19 26	6 13	5 57	5 33	
M	27	4 36	7 36	19 13	6 13	7 25	7 1	2nd Atlantic Cable
T	28	4 37	7 35	18 59	6 12	8 6	7 4	laid, 1866
W	29	4 38	7 34	18 45	6 10	8 54	8 2	French revolut'n, '39
Th.	30	4 39	7 32	18 30	6 8	9 54	9 30	
F	31	4 41	7 31	N 18 16	6 5	10 43	10 19	19 Loyola died. 1556

after. If fair throughout, and rain at the change, the fair weather will probably return on the fourth or fifth day. If at night the stars appear unusually numerous, and there be little or no wind, easterly wind and rain, or snow generally soon follow.

WIND.—If the wind veers about, much rain is pretty sure. If in changing it follows the course of the sun, it brings fair

SEPTEMBER, 1874.

MOON'S PHASES,

Calculated for Mean Time at St. John's, Newfoundland.

LAST QUARTER.....	3rd day,	1h, 24m,	Morning.
NEW MOON.....	10th day,	2h, 40m,	Evening.
FIRST QUARTER.....	18th day,	7h, 34m,	Evening.
FULL MOON.....	25th day,	6h, 26m,	Evening.

Day of W.	Day of M.	Sun		G. app. time.		High		Memoranda, &c., &c.
		rises at St. John's.	sets at St. John's.	Sun's Declination.	Equa of time. subl.	Water at St. John's.		
		h. m.	h. m.	° ' "	m. s.	p. m.	a. m.	
T	1	5 23	6 36	N 8 15	0 8	12 53	0 29	
W	2	5 25	6 35	7 53	0 27	2 13	1 49	Atlantic Cable of 1865 grappled and secured, 1867
Th.	3	5 26	6 33	7 31	0 46	3 49	3 25	
F	4	5 27	6 31	7 9	1 5	4 5	3 40	
S	5	5 29	6 28	6 47	1 25	6 31	6 7	
Su.	6	5 30	6 26	6 25	1 45	7 27	7 3	
M	7	5 31	6 24	6 2	2 5	8 2	7 38	
T	8	5 33	6 22	5 40	2 25	8 59	8 35	Great Eastern arrived at Heart's Content with 1865 Cable, 1867
W	9	5 34	6 21	5 17	2 46	9 43	9 19	
Th.	10	5 35	6 18	4 54	3 6	10 49	10 25	—Catholic Cathedral consecrated, 1856
F	11	5 37	6 16	4 32	3 27	7 55	9 11	
S	12	5 38	6 14	4 9	3 48	8 34	8 10	—First Exhibition held in Newfld., '72
Su.	13	5 39	6 12	3 46	4 9	9 6	8 58	
M	14	5 41	6 10	3 23	4 30	9 31	9 7	Moscow burned, 1812
T	15	5 42	6 8	3 0	4 51	10 17	9 56	
W	16	5 43	6 6	2 36	5 12	10 59	10 35	
Th.	17	5 44	6 4	2 13	5 33	11 49	11 25	
F	18	5 45	6 2	1 50	5 54	12 53	0 19	
S	19	5 46	6 0	1 27	6 15	1 35	1 11	
Su.	20	5 47	5 58	1 3	6 36	2 48	2 24	
M	21	5 49	5 56	0 40	6 57	4 13	3 59	Protestant Cathedral consecrated, 1850
T	22	5 51	5 54	N 0 17	7 18	5 42	5 18	
W	23	5 52	5 53	S 0 6	7 39	6 46	6 22	
Th.	24	5 54	5 50	0 29	8 0	7 37	7 13	
F	25	5 56	5 48	0 53	8 21	8 36	8 12	Pacific Ocean dis- covered, 1513
S	26	5 57	5 46	1 16	8 41	9 7	8 43	
Su.	27	5 58	5 44	1 39	9 1	9 41	9 17	Strasbourg falls, '70
M	28	6 0	5 42	2 3	9 22	10 37	10 13	
T	29	6 1	5 40	2 26	9 41	11 30	11 6	St. Michael
W	30	6 2	5 38	S 2 50	10 1	12 30	0 6	

THE MILKY WAY.—That irregular stream of faint, cloudy light, which may be seen on clear, moonless nights by the naked eye, forming a circle entirely round the heavens, is supposed to be the remoter parts of the group of stars in which our Sun is enveloped. To a spectator at a distant point in the heavens it may appear as a small annular nebular, or as a thin stratum of

NOVEMBER, 1874.

MOON'S PHASES,

Calculated for Mean Time at St. John's, Newfoundland.

NEW MOON..... 9th day, 2h, 3m, Morning.
 FIRST QUARTER..... 16th day, 10h, 23m, Morning.
 FULL MOON..... 23rd day, 2h, 3m, Evening.
 LAST QUARTER..... 30th day, 2h, 58m, Evening.

Day of W.	Day of M.	Sun		G. app. time.		High Water at St. John's.		Memoranda, &c., &c.
		rises at St. John's.	sets	Sun's Declination.	Equa of time. subt.	p. m.	a. m.	
SU.	1	6 49	4 38	S 14 28	16 18	4 42	4 18	All Saints' Day
M	2	6 51	4 36	14 47	16 19	5 44	5 20	All Souls' Day
T	3	6 53	4 35	15 6	16 19	6 36	6 12	Free St. Andrew's Church opened, '50
W	4	6 54	4 33	15 25	16 18	7 16	6 54	Bat. Inkerman, 1854
Th.	5	6 56	4 32	15 43	16 16	7 55	7 31	
F	6	6 57	4 30	16 1	16 14	8 29	8 5	
S	7	6 59	4 29	16 19	16 11	9 4	8 40	
SU.	8	7 0	4 27	16 37	16 6	9 38	9 14	
M	9	7 2	4 26	16 54	16 1	10 15	9 51	Prince Wales b. '41 Newfoundland and N. York Tel'ph opened, 1856
T	10	7 3	4 25	17 11	15 56	8 5		Mozart born, 1719
W	11	7 5	4 24	17 28	15 49	8 47	8 29	
Th.	12	7 6	4 22	17 44	15 41	9 32	9 8	
F	13	7 8	4 21	18 0	15 33	10 20	9 56	
S	14	7 10	4 20	18 16	15 24	11 11	10 44	
SU.	15	7 11	4 19	18 31	15 14	12 7	11 43	
M	16	7 12	4 18	18 47	15 3	12 42	0 18	
T	17	7 14	4 16	19 1	14 51	1 43	1 19	Suez Canal opened, 1869
W	18	7 15	4 15	19 16	14 39	3 3	2 39	
Th.	19	7 17	4 14	19 30	14 26	3 25	3 1	
F	20	7 18	4 13	19 44	14 11	5 35	5 11	
S	21	7 20	4 12	19 57	13 57	6 32	6 8	
SU.	22	7 21	4 11	20 19	13 41	7 24	7 0	St. Cecilia
M	23	7 23	4 11	20 23	13 24	8 1	7 37	
T	24	7 24	4 10	20 35	13 7	9 11	8 44	
W	25	7 26	4 9	20 47	12 49	10 20	9 56	
Th.	26	7 27	4 8	20 58	12 30	10 59	10 35	
F	27	7 28	4 7	21 10	12 11	12 00	11 36	First steam printing, 1814
S	28	7 30	4 7	21 20	11 51	1 00	0 36	
SU.	29	7 31	4 6	21 31	11 30	2 27	2 3	
M	30	7 32	4 6 S	21 41	11 8	3 46	3 22	St. Andrew.

stars. This nebula is seen through the Milky Way, but is supposed to lie at an immeasurable distance beyond it.

THE UNITED KINGDOM.—The population of the United Kingdom, in 1861, amounted to 29,193,397, and of the entire British

DECEMBER, 1874.

MOON'S PHASES.

Calculated for Mean Time at St. John's, Newfoundland.

NEW MOON.....	8th day,	8h, 36m,	Morning.
FIRST QUARTER.....	16th day,	8h, 54m,	Morning.
FULL MOON.....	23rd day,	1h, 26m,	Morning.
LAST QUARTER.....	30th day,	11h, 5m,	Morning.

Day of W.	Day of M.	Sun		G. app. time.		High Water at			Memoranda, &c., &c.
		rises	sets	Sun's Declination.	Equa of time.	St. John's.	St. John's.		
		h. m.	h. m.	° ' "	m. s.	p. m.	a. m.		
T	1	7 33	4 5	S 21 50	10 46	4 53	4 9	Bat Austerlitz, 1805	
W	2	7 35	4 5	21 59	10 23	5 28	5 4		
Th.	3	7 36	4 4	22 8	9 59	6 04	5 40	St. Andrew's Kirk opened, 1843	
F	4	7 37	4 4	22 16	9 35	6 53	6 29		
S	5	7 38	4 3	22 24	9 10	7 28	7 4		
Su.	6	7 39	4 3	22 31	8 45	8 06	7 52	St. Nicholas	
M	7	7 40	4 3	22 38	8 19	8 35	8 11		
T	8	7 42	4 3	22 45	7 52	9 46	9 22	Sons of Temperance organized in Nfld. 1850	
W	9	7 43	4 3	22 51	7 25	7 45	7 21		
Th.	10	7 44	4 3	22 56	6 58	8 32	8 4		
F	11	7 44	4 3	23 1	6 30	9 18	8 54		
S	12	7 45	4 3	23 6	6 2	9 57	9 33		
Su.	13	7 46	4 3	23 10	5 34	10 53	10 29		
M	14	7 47	4 3	23 14	5 5	11 44	11 20	George Street Wesleyan Church opened, 1873	
T	15	7 48	4 3	23 17	4 36	12 41	0 17		
W	16	7 49	4 3	23 20	4 7	1 38	1 14		
Th.	17	7 49	4 4	23 22	3 37	2 44	1 49		
F	18	7 50	4 4	23 24	3 8	3 32	3 8		
S	19	7 51	4 4	23 26	2 38	4 52	4 28		
Su.	20	7 51	4 5	23 26	2 8	6 3	5 49		
M	21	7 52	4 5	23 27	1 39	7 4	6 40	St. Thomas	
T	22	7 52	4 6	23 27	1 9	7 59	7 35		
W	23	7 53	4 6	23 26	0 39	8 56	8 32		
Th.	24	7 53	4 7	23 25	0 9	9 50	9 26		
F	25	7 53	4 7	23 24	0 20	10 41	10 20	CHRISTMAS DAY	
S	26	7 54	4 8	23 22	0 50	11 37	11 13	St. Stephen	
Su.	27	7 54	4 9	23 20	1 19	12 29	0 5	St. John	
M	28	7 54	4 9	23 17	1 49	1 10	0 53	Innocents Day	
T	29	7 54	4 10	23 14	2 18	2 15	1 51		
W	30	7 55	4 11	23 10	2 47	3 21	2 57		
Th.	31	7 55	4 12	S 23 6	3 16	4 26	3 59		

Equation of time to be subtracted from apparent time to the 24th, and to be added the remainder of the month.

Empire, including protected States and Tributaries, 224,342,732, covering an area of 4,122,582 square miles.

Tide Table.

The time of High Water at the following ports, with the rise of the water at Spring and Neap Tides, may be found for the A. M. and P. M. tides for every day of the year 1871.

Capt. KERR, Commander of the Surveying Steamer *Gulbore*, has kindly favored the Compiler with the Tide Tables of the Globe, which the Honorable the Lords of the Admiralty of Great Britain have ordered to be published, being corrected up to 1871.

From these Tables the times of High Water at St. John's have been calculated for every day in the year; then to find the time of High Water at any other Port in this Table.

RULE.

Look for the time of High Water at St. John's on the day the time of High Water is required—to this time add or subtract, as directed in the Table, the hours or minutes opposite the Port in which the time of High Water is required to be known.

EXAMPLE.

Required, the times of High Water at St. Pierre, Nov. 1, 1873:

Time of High Water at St. John's 4.23 p.m., 3.55 a.m.
Opposite St. Pierre, add 1.03 " 1.03 "

Time of High Water at St. Pierre . . . 5.33 " 4.58 "

PLACES.	St. John's time of High Water.	Rise.	
		Spring	Neap.
St. Pierre	add 1h.03m.0 $\frac{1}{2}$	feet 4 $\frac{1}{2}$	feet
Lamaline Harbor	" 1h.15m.8 $\frac{1}{2}$	"	"
Great and Little Lawn	" 0h.45m.7	" 4	"
Great St. Lawrence Harbor	" 1h.00m.7	" 4	"
Burin Harbor	" 1h.12m.0 $\frac{1}{2}$	" 4 $\frac{1}{2}$	"
St. Mary's Harbor	" 0h.13m.7 $\frac{1}{2}$	" 6	"
North Harbor	" 0h.50m.7 $\frac{1}{2}$	" 8	"
Cape St. Mary	" 1h.00m.7	" 6	"
Placentia	" 1h.16m.7	" 6	"
Trepassey Harbor	subt. 0h.20m.6	" 6	"
Cape Race	" 0h.20m.6	" 6	"
Spaniard's Bay	add 0h.15m.4	" 6	"
Harbor Grace	subt. 0h.00m.4	" 8	"
Carbonear	" 0h.10m.4	" 8	"
Hants Harbor	" 0h.17m.4	" 8	"
Smith Sound	" 0h.22m.5 $\frac{1}{2}$	" 2 $\frac{1}{2}$	"
Bonavista	" 0h.05m.8	" 2 $\frac{1}{2}$	"
Kings Cove	" 0h.15m.5 $\frac{1}{2}$	" 2 $\frac{1}{2}$	"
Hull Island, Trinity Bay	" 0h.00m.8 $\frac{1}{2}$	" 2	"
Heart's Content	add 0h.00m.4	" 2 $\frac{1}{2}$	"
New Perlican Harbor	no correction	" 2 $\frac{1}{2}$	"
Greens Harbor	subt. 0h.40m.8 $\frac{1}{2}$	" 1	"
Trinity Harbor	" 0h.20m.8 $\frac{1}{2}$	" 1	"

TABLE showing the average of certain Meteorological Quantities for a period of Eight years, from Observations made by the late Mr. E. M. J. DEANEY, C. E., at the Colonial Building, St. John's, Newfoundland.
 Latitude, 47° 30' 30. Longitude, 52° 39' 45. W. 170 feet above the level of the sea.

	1857.	1858.	1859.	1860.	1861.	1862.	1863.	1864.	Average for 8 Years.
Maximum height: Bar'.	Inch. Date.	Inch. Date.	Inch. Date.	Inch. Date.	Inch. Date.	Inch. Date.	Inch. Date.	Inch. Date.	
corrected for sea level.	30.85 23 Jan	30.33 16 Jan	30.56 15 Jan	30.36 29 Fy	30.00 27 Oct	30.50 12 May	30.43 16 N'v	30.29 21 Fe	30.42
Minimum height: Bar'.	29.78 9 Jan	23.70 26 Mar	23.72 5 Dec	23.56 11 Fy	28.50 20 Jan	28.57 13 Jan	23.80 1 Ap'1	23.50 17 Fy	23.84
Mean 0 Barometer for the year.....	29-30	23-31	29.73	29.60	29.40	29.50	29.60	29.40	29.51
Maximum height of Thermometer.....	89° 27 July	81° 12 Aug	80° 13 July	80° 11 Kt. Aug	86° 10 Fy	75° 6 July	83° 30 Fy	73° 1 Sep	81.7
Minimum height of Thermometer.....	-5° 27 Fy	-2° 11 Fy	-8° 3 Mar	-11° 3 Fy	-3° 9 Feb	-7° 18 Fy	-14° 13 Feb	-10° 20 Fy	-7.5
Mean temperature for the year.....	42°	41°	41°	41°	40°	41°	41°	37°	40°
Quantity of Rain including melted Snow in In. No. of days in which Rain fell.....	42 Year	50.86 Year	64.30 Year	82.40 Year	56.63 Year	53.67 Year	73.55 Year	56.25 Year	59.94 Inches.
No. of days in which Snow fell.....	129 Days	93 Days	100 Days	117 Days	108 Days	98 Days	93 Days	93 Days	105 Days.
No. of days foggy.....	66 Days	51 Days	43 Days	40 Days	44 Days	88 Days	55 Days	51 "
No. of days on which Thunder and Lightning occurred.....	83 Days	100 Days	92 Days	70 Days	63 Days	76 Days	81 "
Prevalent Winds.....	N.N.W.	N.W.	N.N.W. & S.W.	5 Days	4 Days	4 Days	4 Days	4 Days	15 Days
	N.W.	N.W.	N.N.W. & S.W.	5 Days	4 Days	4 Days	4 Days	4 Days	6 "

cap. feet

General Meteorological Register

St. John's, Newfoundland, Latitude 47°34'.30" North.

	JAN.	FEB.	MARCH.	APRIL.	MAY.
Mean temp. for Mo.	27.1°	24.5°	28.°	35.5°	46.8°
Highest temp. for Mo.	41.5°	38.°	43.°	51.5°	70.°
Lowest temp. for Mo.	10h	0h	3h	7h	12h
Mean Maximum temp.	32.5°	31.°	34.°	42.5°	49.5°
Mean Minimum temp.	18.°	15.5°	19.5°	27.4°	34.7°
Greatest daily range.	16°	20°	24°	17°	29.5°
Least daily range.	2°	1°	4°	2°	3°
Mean height of baromet.	29.752	29.632	29.551	29.416	29.346
Highest Baromet.	30.570	30.397	30.278	30.127	29.958
Lowest Baromet.	28.934	28.840	28.901	28.883	28.630
Greatest daily range.	.636	.592	.650	.533	.487
Lowest daily range.	.028	.052	.019	.092	.033
Mean force of wind Mo.	.05	.12	.289	.144	
Direction of wind	S.S.W.	S.W.	S. & S.W.	E & S.	S. & N.W.
Force of wind	2.5			1.4	1.5
Force of wind	1.29	7.72	10.40	5.87	8.61
Total amount of snow.	7.0	23.20	76.70	9.50	3.00
No. days of rain.	8	3	1	6	11
No. days of snow.	6	9	18	7	2
No. days of fog & haze.	9	14	19	14	13
No. of gales.	1	1	1	1	
No. of Auroras observed.	4	4	2	5	7
Possible to see Auroras, No. of nights.	17	13	15	10	5
Impossible to see Auroras, No. of Nights.	14	16	15	19	23
Number Solar Halos.	1	3	8	14	17
Number Lunar Halos.	4	6	5	6	3
Days of strong winds.	2		11th	3	2
Days of thunder & lightning.			1	3rd	

The above observations have been taken tri-daily, at 8 a.m., 2 p.m., and 9 p.m.

St. John's, Nfld., 13th January, 1872.

for the Year 1872.

Longitude 52°39'.43" West, 150 feet above sea level.

ister
North.

May.

38° 35'
31st
79°
12th
24° 5'
45° 0'
34° 7'
21° 5'
3°
1.946
14th
1.458
8th
2.030

.487
.038

7.1
N.W.
1.5
3.61

3.00
11
2
13
7
5
23
17
3
2

a.m.,

JUNE.	JULY.	AUG.	SEPT.	OCT.	NOV.	DEC.	Mean for 1872.
51° 3'	59° 30'	58° 30'	56° 30'	49° 30'	37°	31° 30'	42° 2'
30th	1st	10th	27th	8th	16th	16th	
78°	79°	78°	76°	67°	62°	50°	60° 7'
20th	18th	31st	25th	29th	25th	26th	
37°	40° 5'	42°	38°	29° 5'	19° 5'	10° 5'	23° 7'
59° 6'	68° 6'	68° 4'	63° 7'	54° 5'	42° 7'	34° 6'	47° 7'
42° 5'	50° 0'	50° 0'	48° 8'		31° 2'	23° 3'	33° 4'
36°	23°	16°	16°	14°	23° 5'	23° 5'	27° 1'
1°	7° 6'	2°	6°	2°	3°	4° 5'	3.3
30.038	29.870	30.010	30.017	30.030	29.890	29.769	29.877
20th	30th	25th	15th	18th	6th	20th	
30.552	30.199	30.376	30.388	30.477	30.325	30.249	30.370
10th	23rd	23rd		9th			
29.562	29.664	29.472	29.375	29.434	29.362	29.226	29.148
						13th	
.345	.500	.450	.536	.485	.656	1.300	.730
.002	.005	.062	.072	.065	.183	.010	.183
			.142	.214	.182	.322	.125
5.5	5.8	5.6	5.4	5.3	7.2	7.4	6.5
EAST	S.W.&W.	S.E.&W.	W.S.W.	S.&S.E.	E.&S.W.	N.W.	
1.7	1.6	1.6	1.8	1.4	1.8		1.7
5.05	6.17	4.86	4.24	9.05	5.16	7.20	6.60 Inch
					23rd		
					4.00	44.75	23.56 "
7	9	5	9	11	9	5	7 Days
						10	8 "
9	6	3	6	13	8	12	9 "
4th	26th		1st		26th	7th	
1	1		1	2	1	1	1
5	4	7	1	4	3	4	4 nights
6	13	13	20	17	8	14	13 "
24	13	13	10	14	22	17	17 "
9	7	8	6	6	10	5	7 Days
3	2	3	2	3	7	6	4 "
4	2	3	5	2	6	4	4 "
	4						

JOHN DELANEY,
Postmaster General.



The Royal Family.

ALEXANDRA VICTORIA, by the Grace of God, of the United Kingdom of Great Britain and Ireland, Queen, only daughter and heir to the late Prince Edward, Duke of Kent, fourth son of King George III. Her Majesty was born at Kensington Palace, on the 24th May 1819; baptised on the 24th June 1819; ascended the throne on the demise of her uncle, King William IV., 20th June 1837; proclaimed 21st June 1837; and crowned at Westminster on the 28th June, 1838. Her Majesty was married at St. James's Palace, on the 10th February 1840, to her cousin, his late Royal Highness, Francis-Albert-Augustus-Charles-Emanuel, Duke of Saxe, Prince of Coburg and Gotha, who died at Windsor Castle, on the 14th December, 1861. Children:—

Victoria-Adelaide-Mary-Louisa, *Princess Royal*, born 21st Nov. 1840; married 25th Jan. 1858, at the Chapel Royal, to His Royal Highness, Prince Frederick-William-Nicholas-Charles, of Prussia.

Albert-Edward, *Prince of Wales and Earl of Dublin*, born 9th November 1841; married 10th March 1863, at Windsor, to Princess Alexandra, daughter of Prince Christian, of Denmark.

Alice-Maud-Mary, born 25th April 1843; married 1st July 1862, at Osborne, to His Royal Highness, Prince Frederick-William-Louis, of Hesse-Darmstadt.

Alfred-Earrest-Albert, born 6th August 1844.

Helena-Augusta-Victoria, born 25th May 1846; married 5th July 1866, to His Royal Highness, Prince Christian, of Schleswig Holstein Sonderburg Augustenburg.

Louisa-Caroline-Alberta, born 8th March 1848; married 23rd March, 1871, to the most noble the Marquis of Lorne.

Arthur-William-Patrick-Albert, born 1st May, 1850.

Leopold-George-Duncan-Albert, born 7th April, 1853.

Beatrice-Mary-Victoria-Feodore, born 14th April, 1857.

Her Majesty's Chief Officers of State.

First Lord of the Treasury—Rt. Hon. W. E. Gladstone.
 Lord High Chancellor—Rt. Hon. Lord Hatherley.
 Lord President of the Council—Rt. Hon. Baron Aberdare.
 Lord Privy Seal—Rt. Hon. Earl of Halifax.
 Chancellor of the Exchequer—W. E. Gladstone.
 Secretary for Home Department—Rt. Hon. R. Lowe.
 Secretary for Foreign Affairs—Rt. Hon. Earl Granville, K.G.
 Secretary for the Colonies—Rt. Hon. Earl of Kimberley.
 Secretary of War—Rt. Hon. E. Cardwell.
 Secretary for India—The Duke of Argyll, K.T.
 Secretary for Ireland—Rt. Hon. Marquis of Hartington.
 First Lord of the Admiralty—Rt. Hon. G. J. Goschen.
 President of the Board of Trade—Rt. Hon. Chichester Fortescue.
 President of the Poor Law Board—Mr. Stansfell.
 Vice-President Education Committee—Rt. Hon. W. E. Forster.
 Chief Commissioner of Works, &c.—Mr. W. P. Adam.

NOT IN THE CABINET.

Commander-in-Chief—H. R. H. the Duke of Cambridge.
 Chancellor of Duchy of Lancaster—Rt. Hon. John Bright.
 Judge-Advocate-General—Rt. Hon. W. Ayrton.
 Under Secretaries for the Colonies—Rt. Hon. K. Huggessen,
 Rt. Hon. Robert G. W. Herbert.
 Attorney General—Sir R. P. Collier, Q.C.
 Solicitor General—Sir J. Duke Coleridge, Q.C.
 Postmaster General—Rt. Hon. W. Monsell.

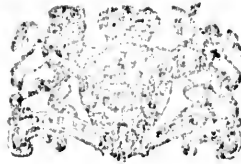
IRELAND.

Lord-Lieutenant—Rt. Hon. Earl Spencer, K.G.
 Under Secretary—T. H. Burke, Esq.
 Lord Chancellor—Rt. Hon. T. O'Hagen.
 Lord Justice of Court of Appeal—Rt. Hon. Sir Wm. James.
 Vice-Chancellor—Rt. Hon. H. E. Chatterton.
 Attorney General—Rt. Hon. J. Sullivan.
 Solicitor General—Sergeant G. R. Barry.
 Law Adviser—Charles Shaw, Esq.

Commander of the Forces—Gen. Lord Strathmairn, G.C.B.
 Hereditary Lord High Steward—Adm. the Earl of Shrewsbury and Talbot.

SCOTLAND.

Lord Justice General—Rt. Hon. John Inglis, L.L. D.
 Keeper of the Great Seal—Earl of Selkirk.
 Keeper of Privy Seal—Earl of Dalhousie, K.T., G.C.B.
 Lord Justice Clerk—Rt. Hon. James Moncrieff.
 Lord Advocate—Rt. Hon. George Young.
 Lord Clerk Register—Rt. Hon. Sir Wm. Gibson Oraig, Bt.
 Solicitor-General—Andrew Rutherford Clark.
 Commander of the Forces—Major-Gen. Randal Rumley.



Colony of Newfoundland.

Governor, Commander-in-Chief, and Vice-Admiral.

HIS EXCELLENCY COLONEL STEPHEN J. HILL, C.B.

Private Secretary.

CAPTAIN HENRY J. F. SUDA, R.A.

Colonial Aid-de-Camp.

EDWARD I. JARVIS, Esquire.

The Executive Council.

The Honorable Charles Fox Bennett, *Premier.*

The Honorable James S. Clift.

The Honorable Thomas Glen.

The Honorable Major Renouf.

The Honorable Joseph I. Little.

The Honorable James L. Noonan.

Clerk of the Council—Hon. James L. Noonan.

The Legislative Council.

The Honorable Edward Morris, *President.*

The Honorable Nicholas Stabb.

The Honorable Robert Kent.

The Honorable James S. Clift.

The Honorable Edward White.

The Honorable Peter G. Tessier.

The Honorable John Winter.

The Honorable Edward D. Shea.

The Honorable William J. S. Donnelly.

The Honorable Robert J. Pinsent, Q.C.

The Honorable Augustus W. Harvey.

The Honorable Robert Thorburn.

The Honorable Thomas Talbot.

Master-in-Chancery and Clerk—Hon. George H. Emerson, holding by Her Majesty's patent, the rank and precedence of an Executive Councillor.

Usher of the Black Rod—William F. Ronnie.

Doorkeeper—James Walsh.

Assistant Doorkeeper and Messenger—James Corcoran.

The House of Assembly.

(See Appendix.)

Clerk—John Stuart.
Clerk Assistant—Richard Holden.
Acting Clerk Assistant—Richard B. Holden.
Solicitor—Augustus O. Hayward.
Sergeant at Arms—John B. Barnes.
Librarian—Richard B. Holden, Acting.
Doorkeeper—John Hally.
Messengers—John Kennedy and Peter Higgins.
Under Doorkeeper—Francis Doyle.
Outer Doorkeeper—William Kelly.
Fireman—John Higgins.

Public Officers--Departmental.

Colonial Secretary—Hon. James L. Noonan.
Attorney General—Hon. Joseph I. Little.
Receiver General—Hon. Thomas Glen.
Surveyor General—William M. Barnes.
Chairman Board of Works—Hon. Major Renouf.

Colonial Secretary's Office.

Colonial Secretary—Hon. James L. Noonan.
First Clerk—Joseph Crowdy.
Second Clerk—John W. Withers.
Office Keeper and Messenger—James Dunphy.

FINANCIAL SECRETARY'S OFFICE.

Clerk—Richard Howley.

Revenue Department.

BOARD OF REVENUE.

President—Hon. Thomas Glen, Receiver General; Edwin Duder, William Pitts, Robert Alexander, Thomas R. Smith, Robert Thorburn.

REVENUE ESTABLISHMENT.

Receiver General—Hon. Thomas Glen. *Assistant Collector*—John Canning, Esq. *Landing and Tide Surveyor*—James S. Hayward. *Landing Waiters*—E. L. Moore, Jas. Winter. *Third Landing Waiter and Assistant Tide Surveyor*—Wm. S. Canning. *First Clerk and Warehouse Keeper*—William Doutney. *Second Clerk*—William Gill. *Third Clerk*—John R. Kearney. *Fourth Clerk and Locker*—Patrick Furlong. *Fifth Clerk*—John R. Noonan. *Lockers*—Richard Meagher and David Connors.
Authorised Broker—Henry J. Stabb.

OUTPORT SUB-COLLECTORS.

Fogo, John G. Lucas. *Greenspond*, William Lang. *Trinity*, Robert Bayly. *Carbonear*, Felix J. McCarthy. *Harbor Grace*,

Alexander Clift; Clerk and Landing Waker, Thomas W. Gaden. Brigus, John C. Nuttall. Burin, Thomas Winter. Lamaline, Henry Benning. Harbor Breton, Thomas Birkett. Pushthrough, (Fortune Bay) Henry Camp. English Harbor, Albert Stirling. Gaultois, Richard Bradshaw. LaPoile, Thomas Reid. Twillingate, Joseph J. Pearce. Oderin, Richard McGrath. Channel, (Port-aux-Basque) W. S. Green. St. Lawrence, Hugh Vavasor.

PREVENTIVE OFFICERS.

Bonavista and Catalina, John Miffen. Bay Bulls to Mobile, exclusive, J. Williams. Mobile, inclusive, to LaManche, Thomas Driscoll. Ferryland, William S. Carter. St. Mary's, Adam J. McKen. Little Placentia, Thomas Freeman. Bay Roberts, G. W. R. Herlihy. Hants Harbor, James L. Mews. Burgeo, F. A. Parsons. Great Placentia, William G. Bradshaw. Grand Bank and Fortune, (Fortune Bay) William J. Coen. Trepassay, Augustus Simms. Tilt Cove, Samuel W. Baird. Rose Blanche, John Furneaux. Renewes, George Jackman.

CUSTOMS DEPARTMENT.

Comptroller of Customs and Registrar of Shipping for Newfoundland and its Dependencies—Hon. T. Glen. Surveyors of Shipping—Edward L. Moore, St. John's. Henry T. Moore, Harbor Grace. Robert Bayly, Trinity. Albert Stirling, English Harbor. David Murphy, Cape Bonavista to Salvage. William Tang, Salvage to Cape Freels. W. J. Coen, Grand Bank and Fortune. John Miffen, Catalina to Ragged Harbor. Joseph J. Pierce, Twillingate to Change Islands. Samuel Baird, Tilt Cove.

TREASURY DEPARTMENT.

Receiver General—Hon. T. Glen. Clerk—Geo. F. Hayward.

COMMISSIONERS FOR REDUCTION OF PUBLIC DEBT.

Receiver General, Honorables C. F. Bennett, and Jas. S. Clift.

LABRADOR—*Collection of Duties under Act 26 Vic., Cap. 1 and 2.*

Collector—M. T. Knight. M. W. Stephenson, Sub-Collector, Blanc Sablon, Labrador.

Superintendent of Mercantile Marine—Robert Carter.

Surveyor General's Department.

Surveyor General—William M. Barnes.

Assistant and Draughtsman—William M. H. Warren.

Topographical Surveyor—Thomas Long.

Assistant Clerk and Chainman—Cartaret Alsop.

DEPUTY SURVEYORS IN OUTPORTS.

Northern District—Gilbert H. Cole, Trinity. Charles E. Thompson, Bonavista. Daniel Murphy, King's Cove. Robert Strathie, Musgrave Town. John T. Oakley, Greenspond. Henry Miles, Open Hall. Thomas Peyton, Twillingate. ———, North Shore of Notre Dame Bay. William Casey, Carbonear. G. W.

R. Hierlihy, Bay Roberts. John Herne, Brigus. W. Christian, Trinity Bay South. Moses Tilly, Random Sound. Pierce Hanrahan, North Shore Conception Bay. George Carter, South Shore Conception Bay.

Southern District—John W. English, St. Mary's. Henry Camp, Fortune. Philip Hubert, Fortune Bay. James Harney, Burin. ———, Grand Bank. Michael Kelley, Cape Broyle. Thomas Driscoll, Bay Bulls.

Board of Works Department,

Having the management and superintendence of Government House, Colonial Building, Court Houses, Gaols, Custom Houses, Hospitals, Lunatic Asylum, and all other Buildings and Property belonging to the Colony; Light Houses, Buoys and Beacons erected or to be erected within the Colony and its Dependencies; supervision of Commissioners of Roads, Highways, Bridges, &c.

BOARD OF WORKS.

Chairman—Hon. Major Renouf; J. B. Wood, John Woods, James McLoughlan.

Secretary—John Stuart.

Superintendent of Public Works and Buildings and Inspector of Light Houses—John T. Nevill.

Clerk—Robert Reader.

Road Surveyor and Inspector—Garret Dooley.

OUTPORT BOARDS OF ROAD COMMISSIONERS.

Harbor Grace District—Alexander Clift, James L. Prendergast, Hugh W. Trapnell, William Butt, James Bolger, Maurice Connell.

Upper Island Cove, Bishop's Cove and Bryant's Cove—John Young, John McLean, John Barrett, (Bishop's Cove) Isaac Coughlan, (Bryant's Cove) James Crane.

Spaniard's Bay—William Earle, Thomas Whelan, Robert Goose, John Callahan, Jonathan Goose.

Bay Roberts—William S. Green, Isaac Bartlett, Stephen Parsons, Charles French, James Culleton, Mark Delaney, sr., Eli Daw.

Brigus to Port-de-Grave, both places inclusive—James Tarahan, Patrick Nowlan, John Wilcox, John Bartlett, Moses Clarke, W. A. Green, Captain J. Walsh, G. G. Crosby, R. LeDrow and John Smith, jr., (Cubits.)

Port-de-Grave, Northern Side of Northern Gut Bridge—Dr. Brown, Thomas Butler, ——— Kenny, John Butler, (Sand) John M. Maddock, John Andrews, Isaac Richards, Thomas Batten, James Moores, Robert Hampton.

Topsail to Indian Pond, inclusive—George Carter, Patrick Daily, John Haddon, R. Parmiter and Philip Walsh.

Indian Pond, exclusive, to Turk's Gut, inclusive—John Kennedy, jr., James Moore, M. Woodford, (Holyrood) Rev. Jeremiah O'Don-

nell, Charles Furey, Richard Walsh, (Harbor Main) John McGill, (Salmon Cove) James Wade, (Cat's Cove) James Hearn, (Colliers.)

Carbonac—Michael Bolger, Henry Forward, Richard McCarthy, George Best, Simon McCarthy, Francis Taylor, Geoffery W. Taylor and James Keough.

Bay-de-Verds—Rev. G. S. Chamberlain, Henry Blundon, Jas. Moores, — Stephens, (Read Head Cove) Thomas Hyde (Caplin Cove) George Gull, Stephen Emberley.

Lower Island Cove—Eli Garland, Azariah Garland, Edwin Turner, John Cummins, George Sparks, Joseph Wiltshire, (Caplin Cove) George Gull, (Jobs Cove) Timothy Kinsella.

Northern Bay—Rev. Joseph Donnelly, Simeon March, Joseph Hogan, Jacob Moores, Charles Steele.

Black Head—Levi Garland, (Mully's Cove) William Lacey, (Fresh Water) Francis Parsons, (Gussett's Cove) Thomas Forristall, (Western Bay) Maurice Walsh, George Perry, (Ochre Pit Cove) Stephen Halfyard.

Trinity, North Side, to Ragged Harbor—Rev. B. Smith and Dr. White, Benjamin Sweetland, Robert Bayly, Alexander W. Bremner, Gilbert H. Cole, Patrick Murphy, Robert Lawlor and Arthur Watts, Teacher.

Trinity, South Side, from Grates Cove to Hants Harbor—James L. Mews, John Sheehan, Levi March, Thomas Avery, Benjamin Benson, jr., (Grates Cove) John Short, (Hants Harbor) William Trim, jr., (Seal Cove) W. H. Meadus, (Grates Cove.)

New Harbor—William Miller, Joseph Pretty, Edgar March, Jacob Smith, (Chance Cove) Nehemiah Frost, (Dildo) William Hoskin, Thomas Hoskin, Moses Parsons, (New Harbor) Edward Moore, (Dildo) James Hefford, (New Harbor) Ebenezer March, Jonathan Hickman.

Hants Harbor to Head of the Bay—Rev. George Gardner, Keuben Bemister, William Sooley, John Ryan, James Gardner, Jos. Hopkins, (Hearts Content) John Newall, John Antle, (Scilly Cove) F. J. Wiltshire, (Heart's Delight) Jacob Hiscock.

Random Sound—Charles Ansford, William Carbery, (Random) Newman Gooley, (Heart's Ease) J. H. Martin, (North Arm) Jas. Toop, (Ireland's Eye) Silas Loader, Thomas Mills, (Thoroughfare) Rev. George Harrington.

Fox Harbor—James Avery, (Fox Harbor) Geo. Vardy, (Hearts Ease.)

Ragged Harbor to Bird Island, inclusive—Alexander Bremner, John Bremner, David Rennie, William Coleridge, John Miffen, Jeremiah Seanan, William Hobbs.

S. W. Arm of Random, to Chance Cove and LaManche, Placentia Bay—A. B. Coahu, (LaManche) Jonathan Benson, (Chance Cove) John Lynch, (Tickle Harbor) William Thorne, (Colliers Bay) Abraham Smith, (Chance Cove.)

Greenspond, &c.—J. S. Lockyer, Dr. Skelton, Darius Blandford, Robert K. Oakley, William Tough, (Pinchards Island) William Kneee, (Pool's Island) Edward Bishop, (Swains Island.)

Salvage—Rev. H. M. Skinner and J. Shepherd, William Brown, James Burden, Joseph Sampson, Joseph Brown, James Handcock, jr.

Brooklyn—William Stares, John Handcock, Thomas Greening, John Oldford, John Handcock, sr., William Handcock, B. Handcock, Joseph Greening, Charles Handcock, Robert Strathie, Philip Handcock, Wm. Diamond.

Bonavista—Joseph R. Miffen, Edward Miffen, James R. Miffen, Joseph Abbott, John Fitzgerald, George Brown, (Cannaille) John Lawrence, (Bonavista.)

King's Cove—Rev. W. Kirby, Rev. W. Veitch, and John DeVine, Michael Ryan, Stephen Ryan, (Broad Cove) John Coffin, James Brown, jr., George Brown, Philip Matthews, (Broad Cove) and Philip Handcock, (Knight's Cove.)

Keels and Tickle Cove—Robert Penny, Patrick Byrne, James Eagan, Patrick Ducey, Andrew Mallowney, John Taylor, Michael Neil, William Quinton, Andrew Skiffington, W. Walker, Thomas Hobbs, Samuel Coffin.

Gooseberry Island and vicinity—Michael Cashin, Edward Payne, John Hynes, John Turner, Thomas White, Abraham Feltham, Samuel Kelly, Charles Harris, Joseph Hayward.

Open Hall to Indian Arm—Frederick Shears, Andrew Kough, Nicholas Cheevers, (Plate Cove) John Cheevers, Thomas Hollahan, (Indian Arm.)

Twillingate—Thomas Peyton, John Spence, William Curtis, William Lethbridge, Francis Roberts, John Roberts, John B. Blandford.

Fogo—John Banks, Nicholas Fitzgerald, Robert Scott, Thomas Humphries, Richard Power, Hay Findlater, Kenneth Carter, James Fitzgerald, Peter Pickett.

Indian Islands—Samuel Penny, William Collins, William Perry.

Barr'd Island and Joe Batt's Arm—James Rolls, Joseph Camden, James Primmer, Miles Burke, Thomas Dealy, Thomas Brown, Joseph Jacobs.

Herring Neck—William Boag, Joseph Blandford, Richard Philpots, Henry Miles, William Richards, Robert Lewis, Wm. Tracy.

New Bonaventure—Edward Gardner, James Toop, John Gardner, Joseph Miller, James Ivamy.

Ward's Harbor to Jacket's Arm—J. Campbell, (Little Bay Islands) John Rousell, (Ward's Harbor) James King, (King's Cove) William Marshall, (Little Bay Islands) John B. Wills, James Norris, (Three Arms.)

North West Arm to Shoe Cove—Frederick Thomas, William Noble, Charles Collins, Joseph Mills, James Grey, Jacob Toms, James White.

Tizon Harbor—Rev. James Brown and William Burke, John Brine, John Dwyer, William Green.

Moreton's Harbor to Tizzard's Harbor—Thomas A. Winser, Wm. Osmond, William J. Holwell, John Cantwell, Emanuel Small, Thomas French, Richard Doull, Robert Wolfreys.

Burnt Island, Exploits—Edward Downton, Thomas Butt, Wm. Sevin, Andrew Pearce, Josiah Manuel, James Winsor, Thomas A. Winsor.

Fortune Bay—James Hamilton, Michael Bryan, Michael Byrne, Matthias Glaveen, Patrick Carroll, William Carroll, (Indian Cove) James Lyver, (Waldron's Cove.)

Jacket's Arm to Head of Green Bay—John Kight, J. Campbell, John Rowsell, John Wills, Joseph Mills.

Shoe Cove to Nipper's Harbor—James Grey, John Stark, Wm. Noble, John Walshman.

Leading Tickle—James Alcock, Edward Butler, William Rowsell, Thomas Rowsell, Joseph Hackett.

Cat Harbor to Rocky Bay—John Wheeler, Robert Wellon, John Bradley, William Parly, (Musgrave Harbor) Matthew Gibbons, (Cat Harbor) Robert Shelley, (Rocky Bay.)

Bay Bulls—Cornelius Bryan and Joseph Williams.

Witless Bay and Baleen—Very Rev. Dean Cleary, James Murphy, Thomas Driscoll, James Carey, Samuel Driscoll, Thomas Gatherall.

Renews and Fermews—Rev. R. Dunphy and Patrick Leary, William Johnston, Renews; — Lawlor, Broad Cove; John Connell, Henry O'Neill, Fermews.

Ferryland, Caplin Bay and Aquaforte—Rev. John Conway, and E. Hanrahan, John White, Ferryland; Michael Power, Edward Kough, Benjamin Morey, Joseph Sullivan, Caplin Bay; Henry Winsor, Peter Winsor, Aquaforte.

Cape Broyle and Brigus—Rev. John Conway and — Winsor, M. Cashin, Thomas Carew, — Green, Cape Broyle; Nicholas Power, Thomas Badeock, Brigus.

Trepassey—Rev. T. Hennebury and Henry Curtis, James Wadleton, George Devereux, Thomas Sutton.

St. Kyran's—Rev. James Walsh and Thomas Sullivan, Oliver's Cove; William Tibbo, Presque; Michael E. Dwyer, Isle Valen; William Ryan, Paradise.

Harbor Buffett—Rev. William Kingwell and C. D. Chambers, John Miller, Thomas E. Collett, Thoms Hand, Patrick Murphy.

Bean Harbor—Rev. John Kingwell and Richard Radway, Joseph Smith.

Oderin—Richard McGrath, Philip Power, Andrew Murphy.

Sound Island, Placentia Bay—Archibald Blackader, James Hallett, Philip Brown.

Great Placentia—Dr. Bradshaw, William G. Bradshaw, James E. Croucher, John Collins, Thomas Collins, Patrick Rielly and Rev. Laurence Vereker and Rev. Charles Irvine.

Little Placentia—Thomas S. Keates, William Phoran, Robert Ledwell, John Rielly and Rev. John Ryan and Rev. Robert Brennan.

Branch and Point Lance—John W. English, Stephen Roach, Richard Curren, Patrick Power, Joseph English.

St. Mary's—Rev. Richard O'Donnell and Patrick Walsh, John Whelan, Thomas Walsh, John Devine, Patrick Mooney, Patrick Nowlan, Adam J. McKen, John Geary.

Salmonier—Rev. Michael Clancy and John J. Cornack, Garret Curtis, Andrew Nowlan, John Dinn.

John's Pond—William Bugden, Thomas Quigley, Jeremiah Lincham.

Burin—Rev. William Born and John Paul, Michael Gorman, James Inkpen, Samuel Bennett, John Marshall, Samuel Brenton.

Lamaline—Rev. A. E. Gabriel, John Collins, Thomas Haley, Robert Bonnel, John Fleming, Benjamin Bonnel, Kyran Maddigan.

Grand Bank—Edward Evans, Jonathan Snook, James Lake, William Burfitt, Dr. J. G. Haddock.

Harbor Breton—Thomas Birkett, Phillip Hubert, James Hardy, F. Luce, Rev. William K. White and Rev. Robert Brennan.

Settlements outside Fortune Bay—Rev. W. K. White, Harbor Breton; T. Bulley, Sagona; John Galton, Brunet; Samuel Fiander, Comb's Cove; John Rose, Little Bay; G. Keeping, Renconter; Joseph Loader, Harbor Mille; Wm. Miles, Bay L'Argent.

Belloram—Rev. J. Bishop, John Grandy, Thomas Rows, John Rowkey, William Cluett.

Garnish—George T. R. Snelgrove, Samuel Banfield, Joseph Grandy, Thomas Grandy, Stephen Grandy.

St. Lawrence—Robert Pike, William Fitzpatrick, Richard Quirk, James Reeves, Rev. William Doutney.

English Harbor—T. R. Bennett, — Hall, Samuel Fiander, T. Evans, Albert Stirling, William Burke.

Gaultois—Rev. E. Colley, John Lee, Richard Bradshaw, H. Shepherd, Dr. E. Thompson.

Rose Blanche and Harbor LeCou—Rev. T. Netten, Thomas Ridout, John Hanhan, John Rolls, P. H. Sorsoliel, jr., John Furneaux, Charles Hatcher, Alexander McKenzie, R. W. Durfee, Samuel Bonnel.

Burgeo—Rev. John Cunningham, Dr. Hunt. Captain Small, — Filiers, James P. LeGros.

LaPoile—James LeGros, John Cox, Frederick P. Cox, John Hooper, Plante; Thomas Hooper, Henry Jeffries.

Channel—Rev. Mr. Goode, John Keating, Charles Sheaves, Aaron Forsey, John Furneaux, W. S. Green, John LeMoir, Geo. Goode, Charles E. Cossman.

Shore lying between Cape LaHune and Bonne Bay, District of Burgeo and LaPoile—Rev. E. Colley, Abraham G. Skinner, Matthew Lee, Emanuel Symes, James R. Watkins.

GAOLS.

St. John's, Penitentiary—Keeper, Samuel Shaw, acting. Turnkey, W. Williams, acting. Surgeon, Charles Crowdy, M.D.—Matron, Mrs. Bryan.

Harbor Grace—Gaoler, David Rogers. Surgeon, William Allan, M.D.

Trinity—Gaoler, Charles Granger.

Ferryland—Gaoler, George Geary.

Placentia—Gaoler, Samuel Collins.

Burin—Gaoler, John Murphy.

Bonavista—Gaoler, Michael Fennel.

Twillingate and Fogo—Gaoler, Thomas Peyton.

Harbor Breton—Gaoler, William Lorenzen.

Brigus and Port-de-Grave—Gaoler, Thomas Butler.

Greenspond—Gaoler, John Bridle.

COURT HOUSES.

St. John's—Keeper, Lionel T. Chancey.

Harbor Grace—Keeper, David Rogers.

Ferryland—Keeper, George Geary.

ST. JOHN'S HOSPITAL.

Medical Attendants—Charles Crowdy, M.D., and Charles H. Renouf, M.D. Matron—Miss Cowan. Keeper—John Prowse.

ST. JOHN'S POOR HOUSE.

Medical Attendants—Charles Crowdy, M.D., and Charles H. Renouf, M.D. Keeper—Mrs. Downey.

LUNATIC ASYLUM, ST. JOHN'S.

Resident Physician—Henry H. Stabb, M.D.

DISTRICT SURGEONS.

St. John's—Eastern Ward—William C. Simms, M.D., Henry Shea, M.D. Western Ward—Frederick Bunting, M.D.

Conception Bay—William Allan, M.D.

COLONIAL BUILDING AND GROUNDS.

Keeper—Mrs. Born.

COMMISSIONERS FOR ERECTION OF PUBLIC WHARVES.

Catalina—William Walsh, John Diamond, John Jeynes.

Carbonear—Israel L. McNeil, John Rorke, Michael Dwyer, Francis Taylor.

Britannia Cove, Trinity Bay—Rev. T. Harrington.

Brigus—John Bartlett, W. A. Green, John Wilcox.

COMMISSIONERS FOR ERECTION OF BREAKWATERS.

Fortune—Elias Major, John Lake, John Spence, sr., Thomas Rogers, sr., John Forsey, sr., and Edward Bennett.

Grand Bank—Robert Forsey, William Burfitt, Henry Hickman, Wilson Lovell, Henry Nicholle, George Tibbo, George Forsey.

Twillingate—John Peyton, John W. Owen, John M. Nurse.

Great Burin—Owen Pine, James Inkpen and Henry Hollett.

Brigus—John Bartlett, W. A. Green, John Wilcox.

Commissioners for Deepening Gut at Brigus—James Tarahan, B. G. Gardner, W. A. Green, John Sullivan, John Wilcox.

LIGHT HOUSES.

Fort Amherst Light, at the entrance of St. John's—A Light was first established at this station in 1813; in 1850 a new House, Lantern and apparatus were erected. The Light burns at an elevation of 114 feet, is produced by a double argand burner placed in the focus of an annular lens of the fourth order, and in favorable weather can be seen 16 nautical miles. When Cape Spear is enveloped in fog a heavy piece of ordnance is also discharged at this Fort every hour during daylight, to assist vessels in making the harbor. It is situated in lat. $47^{\circ} 33' 54''$ N., and long. $52^{\circ} 40' 18''$ W. John Sheppard, Keeper; Thomas Moore, Assistant.

St. John's—Two red lights are exhibited every night from sunset until sunrise, intended as leading marks for vessels entering the narrows. The lower Light on the roof of the Custom House—the other 400 yards in the rear, on a white post, within a few yards of the N. E. angle of the Congregational Church, and 180 feet above the level of the sea. These Lights will be readily distinguished from any other Lights in the town; and keeping them in a line bearing N. W. $\frac{3}{4}$ W., will lead in the largest vessel clear of all danger. To serve as leading marks also during the day, the pediment of the Custom House has been painted white; this is to be kept in line with the upper lantern, also painted white. Exhibited 1st September, 1863.

Cape Spear Light—This Light was first exhibited on the 1st September, 1835; it is produced by seven argand burners and silvered reflectors burning at an elevation of 264 feet—it revolves, shewing a bright Light, every minute, and in favorable weather can be seen 26 nautical miles. It is situated in $47^{\circ} 31' 11''$ N. lat., and $52^{\circ} 36' 59''$ W. longitude. James Cantwell, Keeper; Dennis Cantwell, Assistant.

Cape Bonavista Light—Situate in lat. $48^{\circ} 41' 56''$ N., long. $53^{\circ} 5' 20''$ W.; is a revolving Light, showing alternately every 90 seconds a white and red Light. It is produced by 16 argand burners and reflectors, burns at an elevation above the sea of 150 feet, and in favorable weather can be seen 18 nautical miles. By keeping this Light open with Cape L'Argent, it will carry you clear of the Flower Rocks; first exhibited 11th September, 1843. Nicholas White, Keeper; Matthew White, Assistant.

Cape Pine Light—This tower is of iron, built by the Imperial Government in 1849-50, and first put in requisition on the 1st January, 1851. It is a fixed white Light, has 17 argand burners and reflectors—elevated above the level of the sea 314 feet—situated in lat. $46^{\circ} 37' 4''$ N., and in long. $53^{\circ} 31' 45''$ W. In a favorable state of the atmosphere it can be seen 26 nautical miles. George Hewitt, Keeper; Thomas Doran, Assistant.

Harbor Grace Beach Beacon and Light—First exhibited 11th September, 1850; stands on the Point of Beach at the entrance

of Harbor Grace. Sailing into Harbor Grace with a fair or leading wind, bring the Beach Beacon to bear W. or W. by S., and by keeping the Light or Building a little on the starboard bow it will bring you clear of the Bar, on which at low water there is not more than 8 feet of water. It is situated in lat. $47^{\circ} 41' 28''$ N., and in long. $53^{\circ} 12' 33''$ W.; elevation above the sea level 40 feet; in clear weather it may be seen at a distance of 11 nautical miles. George Brown, Keeper.

Green Island Light at the entrance of Catalina Harbor, Trinity Bay—Situate in lat. $48^{\circ} 30' 16''$ N., long. $53^{\circ} 2' 40''$ W. This is a fixed white light, burns at an elevation of 92 feet above high water, and in favorable weather will be seen from E.N.E. seaward, to S.W., 15 nautical miles. Vessels bound Northward by keeping this Light open with the North Head of Catalina until Bonavista Light opens with Cape LeJean, will give the Flower Rocks an ample berth—or when coming from the Northward and bound for Catalina, by giving the N. Head a moderate berth, you will clear the Brandies Rocks by steering for Green Island Light. It was first exhibited in 1857. Peter Woods, Keeper; Henry Roper, Assistant.

Cape Brace Light—Exhibits a Revolving white Light, from sunset to sunrise. The light will be visible to seaward from N. E. by E., round by the S. E. and S. to W. The Light is elevated 180 feet above the mean water level of the sea, and may be seen in clear weather 19 nautical miles from a ship's deck. The tower is striped red and white vertically. It stands close to the old Beacon, which has been cut down. The Light house is in lat. $46^{\circ} 39' 30''$ N., long. $53^{\circ} 4' 30''$ W., and was first exhibited in 1856. Michael J. Haily, Keeper; George Simms, Assistant.

Dodding Head, Great Burin Island Light—This Light was put in requisition on the 3rd August, 1858, and is exhibited every night from sunset to sunrise. It is revolving, catoptrical of the second order, producing a brilliant White Light every minute, with intermediate flashes, at intervals of twenty seconds, burning at an elevation of 430 feet above the level of the sea, and in favorable weather can be seen 29 miles—situated in $47^{\circ} 0' 20''$ North Latitude, $55^{\circ} 8' 43''$ West Longitude. Austin Sheppard, Acting Keeper; John Churchill, Assistant.

Offer Wadham Island Light—Was first exhibited on the 4th October 1858, and is lighted every night from sunset to sunrise. The Light is a steady, fixed lens-light, burning on a circular Brick Tower, 100 feet above the level of the sea, and can be seen in a favorable state of the atmosphere 15 nautical miles. Situated in Latitude $49^{\circ} 36' 0''$ North, Longitude $53^{\circ} 45' 6''$ West. Charles Prowse, Keeper; Henry Waterman, Assistant.

Baccalieu Island Light—This light is exhibited every night from the going away of daylight in the evening to the return of daylight in the morning. The Light house is situated on the Northern end of the Island—Latitude $48^{\circ} 8' 51''$ North, Longitude $52^{\circ} 47' 50''$ West—the tower is of brick, the keeper's dwelling (a square building detached from the tower,) is painted white, with the roof red.

The light is a catoptric first class Heliophotal revolving white Light, showing a flash every twenty seconds. It is elevated 443 feet above high water, and can be seen in clear weather 80 nautical miles, and a lesser distance according to the state of the atmosphere. When the Southern end of the Island bears N.N.E., the Light will not be visible when nearer the Island than 8 miles. It was first exhibited in 1858. James Ryan, Keeper; John Ryan, Assistant.

Cape St. Mary's Light—Was put in requisition on the 20th September, 1860; it is a revolving catoptric Light of the first order, producing alternately every minute a brilliant red and a white light, burning at an elevation of 300 feet above the level of the sea, and will be seen in a favorable state of the atmosphere 26 nautical miles from a vessel's deck; situated in $46^{\circ} 49' 30''$ N. lat., $54^{\circ} 11' 34''$ W. long. The tower is of brick, and on each side of which stands the dwellings of the Keeper and Assistant, the sides of which are painted white, roofs red. John Rielly, Keeper; William J. Collins, Assistant.

Brunot Island Light, Mercer's Head, Fortune Bay—First exhibited 27th June, 1865. It is a powerful, flashing white Light, and attains its greatest brilliancy every ten seconds. It burns at an elevation of 408 feet above the level of the sea, and in clear weather may be seen at a distance of 35 miles, and be visible in every direction from North round East and South, to W.N.W. Mercer's Head is a bold headland, and situated in long. $55^{\circ} 59' 30''$ W., and lat. $47^{\circ} 16' 00''$ N. Martin Sparrow, Keeper; James Gaulton, Assistant.

Harbor Grace Island Light—The fixed Light for many years past exhibited at Harbor Grace Island, in Conception Bay, was discontinued on the 1st December, 1869. The Light at that station is now revolving, showing in every direction two white flashes, followed by one red flash. The interval between each flash in attaining its greatest brilliancy will be 30 seconds. This Light, in a favorable state of the atmosphere, will be seen 25 nautical miles. It is situated in lat. $47^{\circ} 42' 45''$ N., and long. $53^{\circ} 8' 15''$. Austin Oke, Keeper; Patrick Houlahan, Assistant.

Ferryland Head Light—First exhibited on the 1st October, 1871. From sunset to sunrise a steady white Light, of the 3rd order, burning on a brick tower 200 feet above the level of the sea, visible in favorable weather 16 nautical miles. Ferryland Head Light is situated in lat. $47^{\circ} 00' 58''$ N., and long. $52^{\circ} 51' 07''$ W. The tower is of red brick; the keepers dwelling, detached from the tower, is painted white and the roof red. Michael Kearney, Keeper; Thomas Costello, Assistant.

Gallantry Head, Island of St. Peter's—The Fixed Light on Gallantry Head, (Island of St. Peter's), since the 10th August, 1862, has been replaced by a Flash Light, with intervals of twenty seconds, and by one red flash after two white flashes; situated in lat. $46^{\circ} 45' 30''$ N., long. $58^{\circ} 27' 00''$ W.; elevation above high water, 64 metres. Distance at which the light is visible, 18 miles. The Light is hidden at the Northward by the high land of St. Peter's.

Light at the South Entrance of St. Peter's—Since 1st October, 1862, the entrance of the harbor of St. Peter's, called South Channel, has been marked by two small fixed Lights, one of which is a white Light, illuminating three-fourths of the horizon, and placed on the Battery—and the other a red Light, on the plain at the north of the town. The white Light has an elevation of 11 metres, and is visible 6 miles. The red Light is elevated 19 metres, visible 3 miles distant. The line connecting these two Lights indicates the Middle Channel.

The position of the red Light has also been so determined that as soon as it is seen on the left of Cape Eagle, vessels coming from Columbian in beating into the N.E. entrance will have nothing to fear from the shoals of Cape Rouge.

(For new Light-houses—See Appendix.)

J. T. Nevill, General Inspector of Light-houses.

Light Dues—One shilling per ton on all vessels entering any port or harbor of the Colony, except coasting, sealing, or fishing vessels; but not to be levied more than once in one year. Sealing and coasting vessels—Sixpence per ton on registered vessels of 40 tons and upwards; Fifteen shillings per annum on all vessels less than 40 tons.

The 19th of Victoria, Cap. 5, Sec. 5, enacts—"That no greater sum than £25 sterling shall be in any year levied for Light Dues on any steamer or vessel entering any port of this Colony; and no steamer plying between Europe and any port of North America, and entering any port of this Colony as a port of call, shall be liable to pay any Light Dues or other port charges except pilotage."

Post Office Department.

Post Master General—John Delaney, Esquire.

First Clerk and General Accountant—George LeMessurier.

Superintendent Money Order Office.—Thomas S. Dwyer.

Second Clerk and Assorter—John Freeman.

Third Clerk and Assorter—George Gaden.

Letter Carriers and Messengers—John Higgins, James Campbell and John Power.

Office hours, from 9 o'clock, a.m., to 4 p.m., Sundays excepted.

POST MASTERS.

Harbor Grace, Andrew T. Drysdale; Carbonear, Nicholas Nicholle; Brigus, Sarah Stantaford, (Post Mistress); Trinity, Anne Cross, (Post Mistress); Bonavista, John Lawrence; Greenspond, William Lang; Fogo, James Fitzgerald; Twillingate, Jos. J. Pearce; Bay Bulls, H. J. Williams, (Post Mistress); Ferryland, John Morry; Placentia, Mrs. Hannah Bradshaw, (Post Mistress); Burin, Thomas Winter; Harbor Breton, Thomas Birkett; Burgeo, Francis A. Parsons; Little Placentia, Alexander Burke; New Perlican, Francis Howell; LaPoile, Thomas Read; Channel, Wm. S. Green.

WAY OFFICERS.

Port-de-Grave, Matthew O'Rielly; Bay Roberts, Eliza Moore, (Way Mistress); Black Head, John Moore; King's Cove, Bernard Murphy; Old Perlican, William Christian; Portugal Cove, Mrs. Dooley, (Way Mistress); Exploits, T. Winser; Grates, Jas. Jeans; Brooklyn, (Goose Bay), D. Stares; Spaniard's Bay, — Earle; Georges Bay, Joseph LeGrande; Bay of Islands, William Petipas; St. Mary's, Patrick Walsh; Harbor Maine, Mr. Ezekiel; Catalina, William Coleridge; Oderin, James Murphy; Paradise, Patrick Healy; Salmonier, Matthew Carew; Hermitage, M. Frances; Garnish, George Snelgrove; Bay-de-Verds, Charles Blundon; Lamaline, James Pittman; Grand Bank, Jonathan Hickman; Fortune, H. J. Haddon; Holyrood, John Veitch; Topsail, James Moise; Hant's Harbor, William Hussen; Cat's Cove, T. O'Brien; Island Cove, John Crane; Trepassey, E. Devereux; English Harbor, A. Stirling; New Harbor, T. Newhook; LaManche, A. B. Cohu; Freshwater, J. Pritchett; Salvage, Thos. Oldford; St. Lawrence, Hugh Vavasor; Rose Blanche, Philip Sorsoliel; Western Bay, Pierce Hanrahan; Tilt Cove, L. N. Gill; Nipper's Harbor, Frederick A. Thomas; Bonne Bay, John R. Roberts; Hearts Content, George Moore; Scilly Cove, Robert Pittman; Herring Neck, Robert Lewis.

POSTAL ROUTES.

Summer—Between St. John's and Portugal Cove, every day, except Sunday and Wednesday, by waggon.

Between Portugal, Cove, Brigus, Harbor Grace and Carbonear, by Steamer, tri-weekly; Bay Roberts, weekly. Overland, Topsail, Holyrood and Harbor Maine, weekly.

Winter—Overland, by waggon, from Carbonear, via Topsail, Kelligrews, Holyrood, Harbor Maine, Brigus, Port-de-Grave, Bay Roberts, Spaniard's Bay and Harbor Grace, four hours after the arrival of the Steamer from Halifax.

Between Carbonear and Grates Cove, (calling at Heart's Content, New Perlican, Hants Harbor and Old Perlican,) weekly by messenger.

Between Carbonear, Plackhead and Bay-de-Verds, weekly, by messenger, calling at intermediate places.

Between New Perlican and Trinity, weekly, by boat.

Between Trinity and Bonavista, and between Trinity and King's Cove, weekly, by messenger.

Between Bonavista and Greenspond, fortnightly, by boat, touching at Salvage.

Between St. John's, Bay-de-Verds, Catalina, King's Cove, Trinity, Bonavista, Greenspond, Fogo, Twillingate, Exploits, Tilt Cove and Nippers Harbor, by Coastal Steamer, fortnightly, on the Thursday after the arrival of the Steamer from Liverpool and Queenstown; and during winter months, Greenspond, overland via Harbor Grace, Spaniard's Bay, New Harbor, Come-by-Chance, Random and Freshwater, on the Monday after arrival of Halifax Steamer.

Between St. John's, Ferryland, Renew's, Trepassey, Burin, St. Pierre, Harbor Briton, Burgeo, La Poile, Rose Blanche and Channel, by coastal Steamer, fortnightly in summer and monthly in winter; calling at Fermeuse and St. Mary's and Placentia, every alternate trip.

Between St. John's, Bay Bulls, Witless Bay, Toads' Cove and Ferryland, weekly, by waggon, during summer months, and fortnightly in winter.

*Between Ferryland, Aquaforte and Renew's, fortnightly in summer, and monthly in winter, by messenger.

Between St. John's and Placentia, by waggon, on Friday, if the Halifax Steamer is in; if not the Mails will be despatched in four hours after her arrival.

*Between Placentia and St. John's, by waggon, in one hour after the arrival of the Packet Boat from Burin.

*Between Salmonier and St. Mary's, by messenger.

*Between Great and Little Placentia, by messenger.

*Between Great Placentia, La Manche, Sound Island, Harbor Buffett, Red Island, Merasheen and Burgeo, by boat.

*Between Great Placentia and Burin, by boat, touching at Paradise and Oderin.

*Between Burin and Garnish, by messenger.

*Between Burin, Corban, Little and Great St. Lawrence, Lamaline, Fortune and Grand Bank, by messenger.

*Between Garnish and Harbor Breton, calling at English Harbor, by boat.

*Between Harbor Breton, Pushthrough, Rencontre, Rameo, Burnt Islands and Petites, by boat.

Besides the above mentioned routes, Mails are made up and despatched by steamer, after arrival of steamer from Halifax.

Routes marked thus * are fortnightly in summer and monthly during winter.

Postage on Letters addressed to the United States, the Dominion of Canada and England, are as follows:—

For Letters under $\frac{1}{2}$ oz., 6 cents, and 6 cents for every additional $\frac{1}{2}$ oz.

Letters for the British West Indies, 10 cents per $\frac{1}{2}$ oz., and 10 cents for every additional $\frac{1}{2}$ oz.

Newspapers to United States, the Dominion and West Indies, 2 cents, and to England, one cent.

Foreign Newspapers re-mailed for transmission to the Outports, are charged one cent each, pre-paid by stamp.

All correspondence addressed to the United Kingdom, United States, the Dominion, New Brunswick, Nova Scotia and Prince Edward's Island must be prepaid, or it cannot be forwarded.

INLAND POSTAGE.

For letters—Under $\frac{1}{2}$ oz. 3 cents.
 Under 1 oz. 6 cents.
 3 cts. for every additional $\frac{1}{2}$ oz., prepaid by stamps.

Argentine Republic, via New York, 24 cents, Ascencion, Borneo, Brazil, Buenos Ayres, Cape of Good Hope, Carthagena, China, via Southampton, Ceylon and India, via Brindisi, Costa Rica, Curacao, Gaudaloupe, Guatemala, Hayti, Honduras, Hong Kong, Japan, Java, Labuan, Mexico, Mosquito, Mont Video, Natal, Nicaragua, Panama, Paraguay, Sandwich Islands, Venezuela, 30 cents and Vancouvers Island, 6 cents per $\frac{1}{2}$ oz.

Bolivia, Chili, Ecuador, Peru, Salvador, West Coast of South America, 42 cents per $\frac{1}{2}$ oz.

Per Packet, via Halifax, Bermuda, United States, Dominion of Canada, Prince Edward Island, 6 cents, and West Indies, 10 cents per $\frac{1}{2}$ oz.

Rules of Rating Letters by British Packet.

For the United Kingdom, West Indies, Dominion of Canada, P. E. Island, and United States, under $\frac{1}{2}$ oz. one rate; under 1 oz. two rates; under $1\frac{1}{2}$ oz. three rates, and so on adding one rate for every $\frac{1}{2}$ oz.

Letters posted in Newfoundland for delivery at any place within the Island, are charged 3 cents for every $\frac{1}{2}$ oz., if prepaid, and 6 cents unpaid.

By the Act 28 Vic., Chap. 2, all letters sent from this Colony, and all local letters deposited in any Post Office in this Colony for delivery or transmission within it, shall be prepaid by Stamps, or otherwise such letters shall be chargeable with double postage to the receiver.

Parties desirous of vending Newfoundland postage stamps, will be allowed a commission of five per cent. Stamps, in all cases, to be paid for in advance.

REGISTRATION.

Any Letters found to contain Coin, as well as any having the word "Registered" written upon them, which may be posted in Newfoundland, will be forwarded charged with a double registration fee.

MONEY ORDER BRANCH.

Thomas S. Dwyer, Superintendent.

Office hours—From 9 a.m., to 4 p.m.

Money Orders are now interchanged with the United Kingdom, Dominion of Canada, and P. E. Island, at the following rates of Commission:—

Scale for United Kingdom—Orders up to £2 stg., 1s. stg.; from £2, up to £5, 2s.; from £5, up to £7, 3s.; from £7, up to £10, 4s.

Scale for the Provinces—Orders up to £5, 1s.; from £5, to £10, 2s.; from £10 to £15, 3s.; and from £15 to £20, 4s. No single order can be granted for more than £20. No half-pence to be introduced in the Orders.

Business of Money Order Office closes one hour before closing the Mails by the Halifax Steamer.

SYSTEM.

1—Money Orders are made out in forms supplied for the use of the Money Order Offices.

2—Persons applying for Money Orders are recommended to use printed "Application Forms," printed for that purpose.

3—Place of payment of a Money Order may be changed in accordance with instructions provided therefor.

4—Alteration of payee's name may be effected, by issue of a new order and payment of commission thereon.

5—Applicants for Money Orders are expected to observe due care in the examination of the same, relative to filling and stamping: defect in Orders, when presented for payment, may cause difficulty and delay, for which the paying office is not to be held accountable.

6—Postmasters should be particularly careful to obtain from the person who presents a Money Order, whether the rightful owner or not, full information as to the Christian name, surname and address of the party who originally obtained it, unless such party be a firm, when the name of the firm will suffice. *The only exception to this rule is—*When an Order is presented through the Bank, in which case it will suffice that the Order, being properly signed, be also crossed with the Banker's name.

7—As however, *after once paying a Money Order, by whomsoever presented, the Office will not be liable to any further claim,* the public are strictly cautioned,—

1st—To take all means to prevent the loss of the Money Order.

2nd—To be careful on taking out an Order, to state correctly the Christian as well as the surname of the person in whose favor it is to be drawn.

3rd—To see that the name of the person taking out the Money Order is correctly known to the person in whose favour it is drawn.

8—Payment of a Money Order must be obtained before the end of the sixth calendar month after that in which it was issued, otherwise a new Order will be necessary, for which a second commission will be charged: and if the order be not paid before the twelfth calendar month after that in which it was issued, all claims to the money will be lost.

Neglect of the foregoing instructions will risk the loss of the money, besides leading to delay and trouble in obtaining payment.

The Money Order Offices, are:—General Post Office, St. John's; Post Offices at Bay Bulls, Bonaville, Brigus, Bargeo, Burin, Channel, Carbonar, Ferryland, Fogo, Greenspond, Harbor Breton, Harbor Grace, Placentia, Trepassey, Trinity, Twillingate.

9—Postmasters should recommend the use of Money Orders for the transmission of money, in preference to such transmission otherwise.

Suggestions to the Public.

Facility will be given to the Post Office in the discharge of its daily duties, and greater security afforded to the Public, by careful attention to the following recommendations:—

Post all Letters and Newspapers, &c., as early as practicable, especially when sent in large numbers.

When a number of Newspapers are addressed to the same office, put them up in one parcel.

When a number of circulars are posted, tie them up in a bundle, with the addresses all in one direction.

Address letters, papers, &c., in a legible and complete manner, always giving the name of the Post Office: and if there be more than one Post Office of that name, the name of the district in which situated. In case of letters going abroad, the name of the country, as well as of the town and city, should be given in full. Letters, for example, intended for London, England, if simply addressed "London," would be forwarded to London, Canada West, and thus be delayed.

Letters, Papers or Parcels for Outports should have the name of the District, the Post or Way Office, distinctly written as part of the address. For instance, Letters for Bonne Bay, French Shore, are sometimes sent to Bonne Bay, Fortune Bay District, being simply directed Bonne Bay—there are several settlements named Broad Cove, Little Bay, English Harbor, Blackhead, Balline, Caplin Cove, Deer Island, Flat Islands, Fortune, Fox Cove, Freshwater, Island Cove, Long Harbor, Burgeo, New Harbor, Salmon Cove, Seal Cove, Ship Cove, and unless properly directed, are liable to go to wrong office for delivery. The loss and inconvenience arising from imperfect directions, is caused by the carelessness of the sender, and no blame can attach to the Post Office—other places besides those named, have settlements with corresponding appellation, hence the necessity of being particular in addressing all letters, &c.

See that every letter, newspaper, or other packet sent by post, is securely folded and sealed. Every such packet has to be several times handled; and even when in the mail bag, is exposed to pressure and friction. Unless, therefore, the article be light and pliant, it should be enclosed in strong paper, linen, parchment, or some other material which will not readily tear or break.

Fasten the covers of newspapers firmly, so as to prevent them from slipping out.

When dropping a letter or newspaper into a letter-box, always see that the packet falls into the box, and does not stick in its passage.

Never seal letters for the East and West Indies and other hot climates, with wax. Such a practice is attended with much inconvenience, and frequently with serious injury, in consequence of the melting of the wax, and the adhesion of the letters to each other. In all such cases use either wafers or gum, and advise your correspondents in the country referred to, to do the same.

Never send money or other articles of value through the Post Office, except either by means of a money order, or in a registered letter. "Any person who sends money or jewellery in an unregistered letter, not only runs a risk of losing his property, but exposes to temptation every one through whose hands his letter passes, and may be the means of ultimately bringing some clerk or letter carrier to moral ruin." Carefully secure every letter or packet containing money or value, first with gum and afterwards with good sealing-wax, on which mark the clear impression of a seal.

On posting a registered letter or packet, always obtain a receipt for the same at the office where posted.

When letters or papers are delayed or missing, at once communicate the fact to the Postmaster of the division in which is situated the Post Office at which the delay or missing letters were posted. In case of a missing letter enclose value, state the exact contents, the exact address, and the office at which posted; the name of the person by whom posted, and the name of the person by whom received at the office. In the case of a delayed letter or paper, send the cover or wrapper in an entire state, in order that the place of delay may be ascertained by an examination of the post marks.

Trouble and loss occasionally arise out of the carelessness or dishonesty of parties employed in the Post Office service; yet instances are not wanting in which it has been shown to the satisfaction even of the complainants, that the fault at first attributed to the Post Office, in truth rested in other quarters.—Theft by private hands, although very difficult of proof, have not unfrequently been brought to light; and it is greatly to be desired that those who suffer loss should, in the first instance, and while the circumstances are fresh, endeavor to ascertain with the utmost precision all particulars respecting the despatch or receipt of the lost letters or papers, and lose no time in communicating this information to the Postmaster. Indeed, generally speaking, it is only by careful inquiry into minute details that the offender can be detected, whether he be a servant of a Department or not.

The Post Office is a department which admits of constant improvement and expansion. The public, by sending to the Postmaster General, clear and correct information respecting faulty arrangements, may materially benefit the service. It must be remembered, however, that changes in machinery so extensive and intricate as that of the Post Office, must be made cautiously and with much previous consideration.

Time is generally required to carry out any material change in postal arrangements; for even when decided upon, old contracts, requiring notice of termination, may have to be got rid of, and tenders of new contracts invited by public advertisements, before the decision can take effect.

New Post Offices are established by the Department wherever it is ascertained that a sufficient number of inhabitants can be accommodated, and a sufficient amount of postal revenue collected to warrant such a measure. When a new Post Office is required, a petition should be addressed to the Postmaster

Ge
ent
of
sho
offi
a v
the
pro
ma

An

PO

Nar

*Br

*Bo

*Bu

*Bu

*Ba

*Ca

*Fo

Fer

*Gr

*Ha

*Ha

Litt

*Pl

*Tw

*Tr

New

La

*Ch

General, signed by as many of the inhabitants as can conveniently subscribe the same. The petition should state the name of the settlement and district in which it is desired the office should be established; the distance from the neighboring offices; whether at the sight of the proposed Post Office there is a village; the number of mills, stores, taverns, and houses thereat; the extent of the settlement to be served and the probable cost of the mail; together with any other facts which may form any ground for the accommodation applied for.

Post Office Directory for Newfoundland,

CONTAINING

An Alphabetical List of the Towns, Villages and Settlements in the Colony, with the Post Towns and Way Offices.

POST TOWNS—those marked thus * are Money Order Offices.

<i>Name of Office.</i>	<i>District.</i>	<i>Name of Officer.</i>
*Brigus	Port-de-Grave	Mrs. Stantaford
*Bonavista	Bonavista	John Lawrence
*Burin	Burin	Thomas Winter
*Burgeo	Burgeo and La Poile.	F. A. Parsons
*Bay Bulls	Ferryland	H. J. Williams
*Carbonear	Carbonear	Nicholas Nicholle
*Fogo	Fogo and Twillingate	James Fitzgerald
Ferryland	Ferryland	John Morry
*Greenspond	Bonavista	William Lang
*Harbor Grace	Harbor Grace	Andrew Drysdale
*Harbor Breton	Fortune Bay	Thomas Birkett
Little Placentia	Placentia and St. Mary's	Alexander Burke
*Placentia	Placentia and St. Mary's	Mrs. H. Bradshaw
*Twillingate	Fogo and Twillingate	Joseph J. Pierce
*Trinity	Trinity	Anne Cross
New Perlican	Trinity	Francis Howell
La Poile	Burgeo and La Poile	Thomas Read
*Channel	Burgeo and La Poile	William S. Green

Way Offices.

<i>Name of Office.</i>	<i>District.</i>	<i>Way Office Keeper.</i>
Bay Roberts	Port-de-Grave	Eliza Moore
Black Head	Bay-de-Verds	William Hudson
Bay-de-Verds	Bay-de-Verds	Charles Blundon
Catalina	Trinity	William Coleridge
Cats Cove	Harbor Main	Timothy O'Brien
Come by Chance	Placentia Bay	A. Blackadar
English Harbor	Fortune Bay	Albert Stirling
Fortune	Burin	H. J. Haddon
Freshwater	Bonavista Bay	J. Fritchett
Grand Bank	Burin	Jonathan Hickman
Garnish	Burin	George Snelgrove
Harbor Main	Harbor Main	Mrs. Ezekiel
Hermitage	Fortune Bay	M. Frances
Hants Harbor	Trinity	John Hussen
Holyrood	Harbor Main	John Veitch
Island Cove	Harbor Grace	John Crane
King's Cove	Bonavista	Bernard Murphy
Lamaline	Burin	James Pittman
La Mancho	Placentia and St. Mary's	A. B. Cohn
New Harbor	Trinity	Thomas Newhook
Oderin	Placentia and St. Mary's	James Murphy
Old Perlican	Trinity	William Christian
Paradise	Placentia and St. Mary's	Patrick Healy
Port-de-Grave	Port-de-Grave	Matthew O'Reilly
Portugal Cove	St. John's East	Margaret Dooley
Random	Trinity Bay	J. Tilley
Salmonier	St. Mary's and Placentia	Matthew Carew
St. Mary's	Placentia and St. Mary's	Patrick Walsh
Topsail	Harbor Main	John Moise
Trepassey	St. Mary's	Ellen Devereux
Western Bay	Bay-de-Verds	James Hanrahan
Salvage	Bonavista	Thomas Oldford
St. Lawrence	Burin	Hugh Vavator
Rose Blanche	Burgeo and La Poile	P. Sorsoliel
Tilt Cove	Fogo and Twillingate	L. N. Gill
Nipper's Harbor	Fogo and Twillingate	F. A. Thomas
Exploits	Fogo and Twillingate	Thomas Winsler
Grates Cove	Bay-de-Verds	James Jones
Georges Bay	French Shore, West	Joseph LeGrande
Bay of Islands	French Shore, West	Wm. Pettipass
Brooklyñ (Goose Bay)	Bonavista	D. Stares
Spaniard's Bay	Harbor Grace	William Earle
Bonne Bay	French Shore, West	J. R. Roberts
Hearts Content	Trinity	George Moore
Scilly Cove	Trinity	Robert Pittman

Alphabetical List of Towns, Villages and Settlements.

<i>Name of Places.</i>	<i>Districts.</i>	<i>Post Towns.</i>
Adam's Cove	Bay-de-Verds	Carbonear
Amherst Cove, (Up'r)	Bonavista	Trinity
Amherst Cove, (Lo'r)	do	do
Apsey Cove	Fogo	Fogo
Aquaforte	Ferryland	Ferryland
Admiral's Cove	St. Mary's and Placentia	St. Mary's
Angel's Cove	do do	Placentia
Arnold's Cove	do do	Little Placentia
Ann's Cove	do do	Great Placentia
Belle Isle	St. John's East	Portugal Cove
Balline	do	do
Broad Cove	do	do
Blackhead	St. John's West	St. John's
Broad Cove	Harbor Main	Harbor Main
Bacon Cove	do	Brigus
Burnt Head, (Cupids)	Brigus	do
Broad Cove	do	do
Bull Cove	do	do
Blow-me-Down	do	do
Bareneed	do	do
Brigus	do	do
Bryant's Cove	Harbor Grace	Harbor Grace
Bishop's Cove	do	do
Beachy Cove	do	do
Blow-me-Down	Bay-de-Verds	Carbonear
Broad Cove, (No. S.)	do	do
Blackhead	do	do
Bay-de-Verds	do	do
Boney Brook	do	do
Bird Island Cove	Trinity	Bonavista
Birchey Cove	Bonavista	do
Barrow Harbor	do	do
Back Harbor	Fogo and Twillingate	Twillingate
Broom Close	Trinity	Trinity
Bloody Bay	Bonavista	do
Bonavista	do	Bonavista
Bragg's Island	do	Greenspond
Burnt Island	do	do
Bennett's Island.	do	do
Bayly's Cove	do	do
Bermoth Island	do	do
Bloody Arm	Fogo	Fogo
Beaver Cove	do	Tilt Cove
Bard Islands	do	Fogo
Blackhead Cove	do	do
Black Island	do	Exploita
Burnt Bay	do	do
Birchy Bay	do	do

<i>Name of Places.</i>	<i>Districts.</i>	<i>Post Towns.</i>
Bet's Cove	Fogo	Fogo
Bay Bulls	Ferryland	Bay Bulls
Burnt Cove	do	do
Balline (South)	do	do
Brigus (South)	do	Ferryland
Biscay Bay	Placentia and St. Mary's	Trepassey
Barisway	St. Mary's	St. Mary's
Beckford C. Shore	Placentia and St. Mary's	Placentia
Branch	Placentia	do
Bordeaux	do	Little Placentia
Black River	do	do
Barren Island	do	do
Bett's Hole	do	do
Burgeo	do	do
Bona	do	Great Placentia
Burnt Islands	do	do
Bane Harbor	do	do
Beau Bois	Burin	Burin
Burin	do	do
Brunet Island	Fortune Bay	Harbor Breton
Bay de East	do	English Harbor.
Bay de North	do	do
Rock Side Cove	Trinity	Trinity
British Harbor	do	do
Black Duck Cove	do	do
Boun's Dear Cove	do	do
Broad Cove	do	do
Barrow	Fortune Bay	English Harbor.
Belloram	do	do
Blue Pinion	do	do
Bay L'Argent	do	do
Ball Bay	do	do
Banburgh's Cove	do	do
Boxy	do	Harbor Breton,
Blanchett	do	do
Bay de L'eau	do	do
Brimball's Head	do	do
Bonne Bay	do	do
Brimball's Store House	La Poile	Burgeo
Burgeo (Upper)	do	do
Burgeo	Placentia and St. Mary's	Little Placentia,
Burgeo (Lower)	La Poile	Burgeo
Brazils	do	Rose Blanche
Baker's Tickle	do	do
Burnt Islands	do	do
Brent's Cove	do	do
Bede Cove	do	do
Bear Cove	do	do
Cape Spear	St. John's East	St. John's
Chamberlain	Harbor Main	do
Chapel's Cove	do	Harbor Main

<i>Name of Places.</i>	<i>Districts.</i>	<i>Post Towns.</i>
Cats Cove	Harbor Main	Harbor Main
Cow Head	Fogo and Twillingate	Twillingate
Colliers	Harbor Main	Brigus
Cupids	Brigus	do
Caplin Cove	do	do
Clark's Beach	do	do
Centre Harbor	Harbor Grace	Harbor Grace
Coosh	do	do
Coley's Point	do	Brigus
Carbonear	Carbonear	Carbonear
Cloun's Cove	Bay-de-Verds	do
Caplin Cove	do	do
Chapel Arm	Trinity	Harbor Grace
Chance Cove	do	do
Cat Cove	do	Trinity
Cuckold's Cove	do	do
Catalina	do	do
Carless Harbor	do	do
Castle Cove	do	do
Cottrell's Island	Bonavista	Greenspond
Cobbler's Island	do	do
Cape Island	do	do
Cape Freels	do	do
Cat Harbor	Fogo	do
Can Island	do	Fogo
Cape Fogo	do	do
Change Islands	do	do
Caplin Cove	do	Tilt Cove
Caplin Bay	Ferryland	Ferryland
Cape Broyle	do	Bay Bulls
Cape Braze	St. Mary's and Placentia	Trepassey
Cape Pine	do do	do
Colinet	do do	St. Mary's
Cape Dog	do do	do
Cuslett	do do	Great Placentia
Clattice Harbor	do do	do
Corbin	Burin	Burin
Conn	Fortune Bay	Harbor Breton
Cinque Serf	La Poile	Rose Blanche
Corbon	do	English Harbor
Con Harbor	do	Harbor Breton
Corbon	do	do
Coomb's Cove	do	do
Cannaigre Bay	do	do
Cul de Sac	do	do
Cape La Have	do	do
Coppett	do	Bergeo
Cotteau	do	do
Channel	Burgeo and La Poile	Channel
Dock port de Grave	Brigus	Brigus
Deck Point	Harbor Grace	Harbor Grace

<i>Name of Places.</i>	<i>Districts.</i>	<i>Post Towns.</i>
Daniel's Cove	Trinity	Carbonear
Dildo Cove	do	Harbor Grace
Deer Island	Bonavista	Greenspond
Dead Man's Bay	Fogo and Twillingate	do
Doting Cove	do do	do
Dog Bay	do do	Twillingate
Distress	Placentia and St. Mary's	Placentia
Dog Harbor	do do	Little Placentia
Davis's Cove	do do	do
Duricle	Burin	Burin
Dawson's Cove	Fortune Bay	Harbor Breton
Despair Bay	do	do
Doctor's Harbor	do	English Harbor
Dragon Bay	Burgeo and La Poile	Harbor Breton
Deer Island	do do	Burgeo
English Harbor	Trinity	Trinity
Exploits, Burnt Island	Fogo and Twillingate	Exploits
English Harbor	Fortune Bay	Harbor Breton
English Harbor, } near Belloram }	do	English Harbor
Eastern Point	Burgeo and La Poile	La Poile
Flat Rock, Torbay	St. John's East	St. John's
Freshwater	do do	do
Fox Trap	Harbor Main	do Topsail
Freshwater	Bay-de-Verds	Carbonear
Fox Harbor	Trinity	Trinity
Friday's Cove	do	do
Fool's Island	do	do
Freshwater Bay	Bonavista	Greenspond
Flat Island	do	Bonavista
Flower Island	do	Greenspond
Fair Island	do	do
Fogo Har. and Island	Fogo and Twillingate	Fogo
Fortune Harbor	do do	Exploits
Flurry's Bite	do do	do
Ferryland	Ferryland	Ferryland
Fermuse	do	do
Fox Harbor	Placentia and St. Mary's	Little Placentia
First Beach & Fresh'tr	do do	Great Placentia
Flat Island	Burin	do
Fox Cove	do	Burin
Fortune	do	do
Forn	Fortune Bay	Harbor Breton
Furby's Cove	do	do
Fox Island Harbor	do	Burgeo
Francois	Burgeo and La Poile	Burin
Frenchman's Cove	Burin	do
Gullies (Upper)	Harbor Main	Topsail
Gullies (Lower)	do	do
Gasters	do	do
Gullies and Goulds	Brigus	Brigus

<i>Name of Places.</i>	<i>Districts.</i>	<i>Post Towns.</i>
Grate's Cove	Bay-de-Verds	Carbonear
Green Harbor	Trinity	Harbor Grace
Gooseberry Cove	do	do
Ganny Cove	do	do
Green Bay	do	Trinity
Green Island Cove	do	do
Gooseberry Island	Greenspond	Bonavista
Greenspond & Tickle	do	Greenspond
Grant's Island	do	do
Gander Bay	Fogo and Twillingate	Fogo
Grapes Cove	do do	do
Goulds (Bay Bulls)	St. John's West	St. John's
Gaskier	St. Mary's and Placentia	St. Mary's
Gull Cove	Placentia and St. Mary's	Placentia
Golden Bay	do do	do
Gooseberry	do do	do
Grandy's Point	do do	do
Gallows Harbor	do do	Great Placentia
Golds Cove	Burin	Burin
Grand Bank	do	do
Grand Beach	do	do
Garnish	Fortune Bay	do
Grand John	do	Harbor Breton
Grant's Cove	do	do
Great Harbor	do	do
Grole	do	do
Gripe Island	do	do
Gaultois	do	do
Great Jervois	do	do
Grandy's Brook	do	Burgeo
Gana	Burgeo and LaPoile	La Poile
Gull Island	Fogo and Twillingate	Twillingate
Horse Cove	Conception Bay	Portugal Cove
Holyrood, Nor. & S'th	Harbor Main	St. John's
Harbor Main	do	Harbor Main
Hiall's Town	Port-de-Grave	Brigus
Hibb's Hole	do	do
Harbor Grace	Harbor Grace	Harbor Grace
Hant's Harbor	Trinity	Carbonear
Heart's Disease	do	do
Heart's Delight	do	do
Heart's Content	do	do
Heart's Ease	do	do
Hare Bay	Fogo and Twillingate	Fogo
Harbor Island	do do	do
Herring Neck	do do	Twillingate
Hall's Bay	do do	do
Holyrood, pond	St. Mary's and Placentia	St. Mary's
Harry Cove	do do	Salmonier
Harbor Buffett	do do	Little Placentia
Hay Stack	do do	do

<i>Name of Places.</i>	<i>Districts.</i>	<i>Post Towns.</i>
Harbor Mille	Fortune Bay	Harbor Breton
Hare Harbor	do	do
Harbor Breton	do	do
Hermitage Cove	do	do
Harry's Cove	do	do
Harbor Gulley	do	do
Hatter's Point	Burgeo and La Poile	Burgeo
Harbor Le Cou	do do	Rose Blanche
Hiscock's Point	do do	do
Island Cove	Harbor Grace	Harbor Grace
Island Cove (Lower)	Bay-de-Verds	Carboncar
Island Cove	Trinity	do
Ireland's Eye	do	Trinity
Indian Arm	Bonavista	Bonavista
Indian Bay	do	do
Indian Islands	Fogo and Twillingate	Fogo
Indian Cove	do do	Exploits
Isle of Valen	Placentia and St. Mary's	Great Placentia
Isle of Glue	Fortune Bay	English Harbor
Isle de Mort	Burgeo and La Poile	Rose Blanche
Juniper Stump	Port-de-Grave	Brigus
Juggler's Cove	Harbor Grace	Harbor Grace
Job's Cove	Bay-de-Verds	Carboncar
Joe Batt's Arm	Fogo and Twillingate	Fogo
Jackson's Arm	do do	Nippers Harbor
John's Pond	St. Mary's and Placentia	St. Mary's
Jiggling Hole	Trinity	Trinity
Jean de Bay	Burin	Burin
Jack Fountain	Fortune Bay	Harbor Breton
Jersey Harbor	do	do
Kelligrews	Conception Bay	St. John's, Topsail
Kerley's Harbor	Trinity	Trinity
Knight's Cove	do	do
King's Cove	Bonavista	King's Cove
Keel's	do	do
King's Cove	Fogo and Twillingate	Tilt Cove
King's Harbor	Burgeo and La Poile	La Poile
Logy Bay	St. John's East	St. John's
Long Pond	Harbor Main	do Topsail
Lance Cove	do	do do
Long Beach	Port-de-Grave	Brigus
Lower Small Point	Bay-de-Verds	Carboncar
Low Point	do	do
Lance Cove	Trinity	do
Lower Amherst Cove	Bonavista	Bonavista
Lion's Den	Fogo and Twillingate	Fogo
Loon Bay	do do	Exploits
Leading Tickle	do do	do
Little Bay Island	do do	Nippers Harbor
Little Island	St. Mary's	St. Mary's
Little Salmonier	do	Salmonier

<i>Name of Places.</i>	<i>Districts.</i>	<i>Post Towns.</i>
Lear's Cove	Placentia and St. Mary's	Great Placentia
Little Placentia	do do	Little Placentia
LaManche	do do	do
Little Harbor	do do	do
Little Bay	Burin	Burin
Lawn	do	do
Lamaline	do	Lamaline
Lounge de Serf	Fortune Bay	Harbor Breton
Lobster Cove	do	do
Lolly Cove	do	English Harbor
Little Bay	do	do
Little Bay	Fogo and Twillingate	Nippers Harbor
Lambell's Passage	Fortune Bay	Harbor Breton
Little River	do	do
Little Bay—LaPoile	Burgeo and La Poile	La Poile
LaPoile	do do	do
LaPlante	do do	do
Maddox Cove	St. John's West	St. John's
Middle Bight	Harbor Main	Topsail
Manuel's	do	do
Middle Arm	do	Harbor Main
Middle Cove	St. John's East	St. John's
Mercer's Cove	Harbor Grace	Harbor Grace
Mosquito	Carbonear	Carbonear
Marshall's Folly	Bay-de-Verds	do
Mulley's Cove	do	do
Muddy Hole	Fogo and Twillingate	Fogo
Merriott's Harbor	do do	Twillingate
Moreton's Harbor	do do	do
Mause Point	do do	do
Mobile	Ferryland	Bay Bulls
Mosquito Island	St. Mary's and Placentia	St. Mary's
Mall Bay	do do	do
Mother Ixx's	do do	do
Middle House	do do	St. John's
Muzzle Pond	do do	St. Mary's
Marguise	do do	Little Placentia
Muzzle Harbor	do do	do
Merashen	do do	do
Mahoney's Cove	do do	Great Placentia
Murphy's Cove	do do	do
Mortier Bay	Burin	Burin
Molyers & Barrisway	do	do
Mose Ambose	Fortune Bay	Harbor Breton
Miller's Passage	do	do
Mosquito	Burgeo and La Poile	Burgeo
Moon's Face	do do	La Poile
Margaree	do do	do
Northern Gut	Port-de-Grave	Brigus
New Perlican	Trinity	Carbonear
New Harbor	do	Harbor Grace

<i>Name of Places.</i>	<i>Districts.</i>	<i>Post Towns.</i>
New Bonaventure	Trinity	Trinity
Norman's Cove	do	Harbor Grace
New Harbor	do	do
Newell's Island	Greenspond	Greenspond
Newman's Cove	Bonavista	Bonavista
Noggin Cove	Fogo and Twillingate	Fogo
New Bay	do do	Exploits
Nimrod	do do	do
Nipper's Harbor	do do	Nippers Harbor
North Harbor	St. Mary's and Placentia	St. Mary's
North Harbor	do do	Little Placentia
New Harbor	Fortune Bay	Harbor Breton
New Harbor	Burgeo and LaPoile	Burgeo
Outer Cove	St. John's East	St. John's
Otterbury	Bay-de-Verds	Carbonear
Ochre Pit Cove	do	do
Old Perlican	Trinity	do
Old Shop	do	Harbor Grace
Old Bonaventure	do	Trinity
Open Hall	Bonavista	do
Oliver's Cove	Placentia and St. Mary's	Placentia
Olerin	do do	do
Old Man's Bay	Burgeo and LaPoile	Burgeo
Pass Island	Fortune Bay	Harbor Breton
Pouch Cove	St. John's East	St. John's, Torbay
Portugal Cove	do	do Port Cove
Petty Harbor	do West	do
Port-de-Grave	Port-de-Grave	Brigus
Perry's Cove	Bay-de-Verds	Carbonear
Plate Cove	Bonavista	Trinity
Pouch Cove	do	Bonavista
Pool's Island	Greenspond	Greenspond
Pinchard's Island	do	do
Pig Island	do	do
Pond Head	do	do
Portugal Cove	St. Mary's and Placentia	Trepassey
Point La Haye	do do	St. Mary's
Patrick's Cove	do do	Great Placentia
Point Verd	do do	do
Placentia (Great)	Placentia and St. Mary's	do
Placentia (Little)	do do	Little Placentia
Point Mall	do do	do
Presque	do do	Great Placentia
Paradise (Great)	do do	do
Paradise (Little)	do do	do
Paradise Sound	do do	do
Petit Ford	do do	do
Pickaree	Fortune Bay	Harbor Breton
Petites	Burgeo and LaPoile	Rose Blanch
Quidi Vidi	St. John's East	St. John's
Rip Rap	Port-de-Grave	Brigus

N
Red I
Rand
Rider
Russe
Ragg
Ragg
Red C
Round
Renev
Rams
Red I
Ragg
Rushc
Red I
Rund
Rock
Renco
Round
Raym
Round
Richa
Renco
Rame
Red I
Rock I
Rotto
Rose I
Seal's
Salmo
Salmo
Ship C
Sandy
Spania
Salmo
Spout
Scilly's
Seal C
Shoal
Sill D
Selby's
Spania
Ship C
Salmo
Spillar
Stock's
Sandy
Salvag
Shoe C
Swain's
Ship I
Seldom

<i>Name of Places.</i>	<i>Districts.</i>	<i>Post Towns.</i>
Red Head Cove	Bay-de-Nerds	Carbonear
Random Sound	Trinity	Trinity
Rider's Harbor	do	do
Russell's Cove	Carbonear	Carbonear
Ragged Harbor	Fogo and Twillingate	Fogo
Ragged Harbor	Trinity	Trinity
Red Cliff Island	Bonavista	do
Round Harbor	Fogo and Twillingate	Tilt Cove
Renews	Ferryland	Ferryland
Rams Island	Placentia and St. Mary's	Little Placentia
Red Island	do do	do
Ragged Islands	do do	do
Rushoones't Harbor	do do	do
Red Harbor	Burin	Burin
Rund's Cove	Trinity	Carbonear
Rock Harbor	Burin	Burin
Rencontre	Fortune Bay	Harbor Breton
Round Cove	do	do
Raymond Island	do	do
Round Harbor	do	do
Richard's Harbor	Burgeo and LaPoile	do
Rencontre	do do	do
Rameo	do do	Burgeo
Red Island	do do	do
Rock Harbor, West	do do	do
Rotto	do do	LaPoile
Rose Blanche	do do	Rose Blanche
Seal's Cove	Harbor Main	St. John's, Topsail
Salmon Cove	do	Harbor Main
Salmon Cove (S. Gut)	Port-de-Grave	Brigus
Ship Cove	do	do
Sandy Cove	do	do
Spaniard's Bay	Harbor Grace	Harbor Grace
Salmon Cove Head	Bay-de-Verds	Carbonear
Spout Cove	do	do
Silly's Cove	Trinity	do
Seal Cove	do	do
Shoal Harbor	do	Trinity
Sid Down	do	do
Selby's Cove	do	do
Spaniard's Bay	do	do
Ship Cove	do	do
Salmon Cove	do	do
Spillard's Cove	do	Bonavista
Stock's Cove	Bonavista	do
Sandy Cove	do	do
Salvage	do	do
Shoe Cove	Greenspond	Greenspond
Swain's Island	do	do
Ship Island	do	do
Seldom-come-by	Fogo and Twillingate	Fogo

<i>Name of Places.</i>	<i>Districts.</i>	<i>Post Towns.</i>
Shoal Bay	Fogo and Twillingate	Fogo
Stocking Harbor	do do	Nippers Harbor
Snook's Arm	do do	Tilt Cove
Shoe Cove	do do	do
St. Shot's	Placentia and St. Mary's	Trepassey
St. John's	St. John's	St. John's
Ship Cove	Placentia and St. Mary's	Great Placentia
St. Lawrence (Great)	Burin	Burin
St. Lawrence (Little)	do	do
Spencer's Cove	Placentia and St. Mary's	Little Placentia
Seeveley's Cove	do do	do
Southern Harbor	do do	do
Sandy Harbor	do do	Great Placentia
St. Kyran's	do do	do
South East Bite	do do	do
Spanish Room	Burin	Burin
Sagona Island	Fortune Bay	Harbor Breton
Stones Cove	do	do
St. Jacques	do	do
S. W. Bainsway	do	do
Sam Hitches	do	do
Southern Harbor	do	English Harbor
Swoir Cove	Burgeo and La Poile	Burgeo
Seal Island Harbor	do do	La Poile
Topsail	Harbor Main	St. John's, Topsail
Turk's Gut	Port-de-Grave	Brigus
Turk's Cove	Trinity	Carbonear
Tickle Harbor	do	Harbor Grace
Trinity	do	Trinity
Trouty	do	do
Thoroughfare	do	do
Tilton Harbor	Fogo and Twillingate	Fogo
Three Arms	do do	Nippers Harbor
Twillingate	do do	Twillingate
Tory Town	do do	do
Tizzard's Harbor	do do	do
Tilt Cove	do do	Tilt Cove
Triton Islands	do do	Exploits
Torbay	St. John's East	St. John's
Trepassey	St. Mary's and Placentia	Placentia
Tack's Beach	do do	Little Placentia
Toselo	do do	Great Placentia
The Brook	Fortune Bay	English Harbor
Turnip Cove	do	do
The Reach	do	do
Upper Small Point	Bay-de-Verds	Carbonear
Upper Amherst Cove	Bonavista	Bonavista
Virgin's Cove	Placentia and St. Mary's	Little Placentia
Victoria Town	Bonavista	Bonavista
Vitter's Cove	Trinity	Trinity
White Monday Hill	Harbor Grace	Harbor Grace

<i>Name of Places.</i>	<i>Districts.</i>	<i>Post Towns.</i>
Western Bay	Bay-de-Verds	Carbonear
White Point	Trinity	Trinity
Witless Bay	do	do
Warren's Harbor	Bonavista	Bonavista
West'n Arm, Rocky B'y	Fogo and Twillingate	Fogo
Western Head	do	Twillingate
Wild Cove, S.-come-by	do	Fogo
Ward's Harbor	do	Exploits
Waldron's Cove	do	do
Witless Bay	Ferryland	Bay Bulls
Woody Island	Placentia and St. Mary's	Little Placentia
Wreck Island	Burgeo and LaPoile	Burgeo
Western Point	do	La Poile
La Croix	Fogo and Twillingate	Tilt Cove
Brien's Cove	do	do
Pacquet	do	do
Mings	do	do
Coachman's Cove	do	do
Flower de Louis	do	do
Lock Drawer	do	do
Seal Cove	do	do
Hawling Point or Bears Cove	do	do

Commissioners of Wrecked Property.

Placentia and St. Mary's, George Simms, jr. District of Burin, George Bishop. Channel, W. S. Green. LaPoile, Thomas Read. Burgeo, Francis Parsons. Placentia, James E. Croucher. St. Mary's, Adam J. McKen. Ferryland, Pierce Mulhowney and W. W. Carter. Bay-de-Verds, John Lewis. Trinity South, James L. Mews. Trinity North, John Millen. Greenspond, John T. Oakely. Fogo, James Fitzgerald. Twillingate, Thomas Peyton. Fortune Bay, Thomas Birkett. Conception Bay, G. W. R. Hierlihy. St. John's, T. G. Morry. Labrador, Robert H. Ellis. Point May to Garnish, Joseph G. Haddock. Point May to Lawn Point, Henry Benning. Cape Race to St. Peter's River, Henry Pennell, Augustus Simms. Cape Bonaventure to Salvage, Michael Murphy.

Commissioners of Pilots.

Chairman—John Goodridge, Esq.; Hon. R. Thorburn, Capt. Cleary, Lewis Tessier and Allan Goodridge.

Judicial Department.

SUPREME COURT.

Chief Justice—Sir Hugh W. Hoyles, Knight.

Assistant Judges—Honorable Bryan Robinson and John Hayward.

Attorney General—Honorable Joseph I. Little.

Queen's Counsel—Hon. George H. Emerson, Hon. Fred. B. T. Carter, William V. Whiteway, Hon. R. J. Pinsent, P. Emerson and Hon. J. I. Little.

Chief Clerk and Registrar Supreme and Central Circuit Courts—Matthew W. Walbank.

Chief Clerk and Registrar Northern Circuit Court—Lewis W. Emerson.

Acting Clerk on Circuit Southern Circuit Court—Robert John Parsons, jr.

Registrar Southern District—Henry T. B. Wood.

Crier of the Supreme Court and Tipstaff—William Howlin.

Barristers and Attorneys of the Supreme Court at St. John's, according to Seniority, exclusive of Attorney and Solicitor Generals and Queen's Counsel—John S. Stevens, Robert R. W. Lilly, Thomas J. Kough, Matthew W. Walbank, Augustus O. Hayward, D. W. Prowse, Michael J. O'Mara, Prescott Emerson, Robert J. Kent, Henry T. B. Wood, Robert J. Parsons, jr., James S. Winter, Alexander J. W. McNeilly, B.A., John H. Boone, D. J. Brown, D. J. Greene, R. Raffus.

Barristers and Attorneys Northern District—Henry A. Clift, William O. Wood, Harbor Grace.

Attorneys at Law—Robert R. Holden, P. J. Scott, T. F. Walsh.

Law Society Benchers—W. V. Whiteway, Treasurer; M. W. Walbank, Secretary; Hon. F. B. T. Carter, Hon. Attorney General, Thomas J. Kough. Librarian—William Howlin.

Sheriffs—Central District, Thomas Talbot; Sub-Sheriff, Lionel T. Chancey. Northern District, John Bemister. Southern District, Edmund Hanrahan; Deputy Sheriff for District of Burgeo and LaPoile, Frederick Cox.

Masters-in-Chancery—Hon. George H. Emerson, Thomas J. Kough, Hon. Robert J. Pinsent, William V. Whiteway, M. W. Walbank.

VICE-ADMIRALTY COURT.

Judge—The Chief Justice for the time being.

Registrar—R. R. W. Lilly.

Marshall—James Bayly.

Surrogates—Henry B. T. Wood, and D. W. Prowse, St. John's. Lewis W. Emerson, Harbor Grace.

COURT OF CIVIL AND CRIMINAL JURISDICTION FOR LABRADOR.

Judge—Robert John Pinsent, sen.

Bailiff—Jonas Purchase.

This Court is held during the summer months on the coast of Labrador. The Judge is ex-officio a Magistrate and Coroner.

CENTRAL DISTRICT COURT.

Judge—D. W. Prowse.

Clerk of the Court—R. R. W. Lilly.

TERMS OF COURT.

Central Circuit Court—Spring Term commences 20th April, and to continue three weeks. Autumn Term, 20th October, and to continue three weeks, with power to the presiding Judge to prolong the term from day to day, not exceeding six days in all.

Sessions after Term—The second Monday in February, March and July, and to continue for a period not exceeding six days.

Supreme Court—Spring Term commencing 20th May, to continue three weeks. Autumn Term, 20th November, and to continue three weeks, with power to the Judges to prolong the term from day to day, not exceeding six days in all.

Sessions after Term—The first Monday in February, March, April and July, and to continue for a period not exceeding six days.

Commissioners for Issuing Mesne and Final Process and Subpoenas returnable into the Supreme and Circuit Courts, for taking Affidavits and Recognizance of bail in any Suit depending in said Courts.

Central District—Matthew W. Walbank and Henry T. B. Wood, St. John's.

Northern District—Lewis W. Emerson, John Fitzgerald, Harbor Grace. Isreal McNeil, Carbonear. John C. Nuttall, John Wilcox, Brigus. John Lewis, Lower Island Cove. G. W. B. Hierlihy, Bay Roberts. William Holden, Harbor Main. James L. Mews, Hauts Harbor. William Christian, Old Perlican. Rev. G. Gardner, Hearts Content. Benjamin Sweetland, Robert Bayly and Gilbert H. Cole, Trinity. Alexander Brenner, Catalina. John Lawrence, Bonavista. John T. Oakely, William Lang, Greenspond. James Fitzgerald, Fogo. John Peyton, Twillingate. ———, King's Cove. John M. Maddock, Port-de-Grave. R. J. Pinsent, sen., Labrador.

Southern District—Edmund Hamrahan, Ferryland. Francis L. Bradshaw, Placentia. Thomas E. Collett, Harbor Buffett.—John Hooper, Port aux Basque. James Pittman, Lamaline. ———, Grand Bank. Francis A. Parsons, Burgeo. Thomas Read, LaPoile. Thomas Birkett, Harbor Breton. James Moran, Thomas Winter, Burin. Nelson Bailie, Oderin. ———, Fortune (Fortune Bay.) James P. LeGros, Petites. Geo. Sutton, Trepassey.

STIPENDIARY MAGISTRATES.

St. John's—Daniel Woodley Prowse, Judge Central District Court.

Conception Bay—Israel L. McNeil, Acting District Judge, Harbor Grace. Israel McNeil, Carbonear. John Wilcox, Brigus.

Trinity Bay—Gilbert H. Cole, Trinity. James L. Mews, Old Perlican.

Bonavista—David Candow.

Fogo—James Fitzgerald.

Twillingate—John Peyton.

Ferryland—David W. O'Mara.

Placentia and St. Mary's—Francis L. Bradshaw, Placentia.
Adam J. McKen, St. Mary's.

Burin—James Moran.

Grand Bank—William J. Coen.

Fortune Bay—Thomas Birkett, Harbor Briton.

LaPoile—Thomas Read.

JUSTICES OF THE PEACE.

For the Colony of Newfoundland—The Judges of the Supreme Court, the Members of the Executive Council, and Hon. Ambrose Shea, Edmund Hanrahan, Hon. Edward D. Shea, James J. Rogerson, Henry J. Kerr, Daniel W. Prowse, R. R. W. Lilly, Robert J. Piusent, David Miller, William H. M. Molyneux.

Central District—Stephen Rendell, Hon. John Winter, Matthew W. Walbank.

Northern District—Benjamin Sweetland, John Peyton, John T. Oakely, John Tilley, James L. Mews, Alexander Bremner, John G. Skelton, John Munn, William H. Ridley, David Candow, William S. Green, John Rorke, James L. Prendergast, John Wilcox, Phillip Levesconte, James Fitzgerald, Lewis W. Emerson, Israel L. McNeil, John Lewis, Reuben Bemister, George Skelton, Michael Murphy, James Aleock, William Stirling, Joseph J. Pearee, Nathan Norman, William Lang, William Holden, Hay Findlater, John Sheehan, William P. Taylor, Gilbert H. Cole, John W. Owen, George W. R. Hierlihy, Edward Thomas Pike, Alexander W. Bremner, George C. Rutherford, Patrick Nowlan, James Tarahan, John M. Maddock, Benjamin T. H. Gould, Michael Dwyer, Hon. William J. S. Donnelly, James Burden, James Winsor, Charles Furey, John Bartlett, Robert Leamon, John Millen, Samuel Evans, James Murphy, William Lethbridge, Ellis Cornish Watson, James Gardner, Daniel Green, William Meadus, John S. Lockyer, Alexander McMillan, Kenneth Carter, Thomas Winsor, Michael Bolger, George Vardy, Charles Dawe, James Alexander, M. D.

Southern District—Francis L. Bradshaw, Thomas Read, Thomas Renouf, Edward Evans, Thomas E. Collett, Francis Berteau, John Walsh, Owen Pine, Richard Marshall, Patrick Furlong, Thomas Winter, Philip Sorsoliel, John W. English, Thomas Birkett, John Jordan, Richard McGrath, W. S. Green, Philip Holman, Thomas R. Keats, Thomas R. Bennett, Francis Read, William J. Coen, Thomas O'Rielly, James Pittman, Henry Benning, John White, Michael Gorman, Adam J. McKen, John Furneaux, Thomas Driscoll, Charles E. Cossman, David W. O'Mara.

Labrador—Nathan Norman, Thomas R. Crockwell, Donald A. Smith, William B. Bendell, Sampson Daw, Thomas G. Larmour, George Goodridge.

CLERKS OF THE PEACE.

St. John's—(For Central District)—Robert R. W. Lilly.—
Harbor Grace—John Fennell. Carbonear—John Mackay. Bri-

gus—
John

St

Swee

Bona

Jame

LaPo

Poin

Brig

Cove

Cove

Chan

Ins

New

—Jan

fantr

John

Crow

Ha

Fred

Ca

threw

The

Peter

Mille

Trini

from

Lawr

Adja

Cross

madu

of Po

Gran

Cove

Thom

Buffe

Go

thre

Ho

Dude

Hon.

Whi

gus—John C. Nuttall. Trinity—Robert Bayly. Bonavista—John Lawrence. Twillingate—Aaron A. Pearce.

CORONERS.

St. John's, Charles H. Renouf, M. D. Harbor Grace, — Bay-de-Verds, John Lewis. Trinity, Benjamin Sweetland. Greenspond, Dr. Skelton. Ferryland, — Bonavista, John Lawrence. District of Twillingate and Fogo, James Fitzgerald. Hermitage Bay, Dr. Bruorton. Burgeo and LaPoile, Dr. Brown. South Side of Trinity Bay, and from Split Point to Caplin Cove Brook in Conception Bay, James L. Mews. Brigus, John Wilcox. Trinity Bay, South Side, from Scilly Cove, West, James Gardner. Carbonear and thence to Penny's Cove, Israel L. McNeil. Ferryland (North), Laurence Fortune. Channel, Dr. T. Jacobs.

CONSTABULARY.

Inspector and General Superintendent of Constabulary for Newfoundland—Paul Carty. St. John's—Acting Sub-Inspector—James Kenna. Cavalry Sergeant—John R. McCowan. Infantry Sergeants—Patrick Coady, Edward Doyle, John Nicol, John Sullivan and George Winslow. Medical Attendant—Dr. Crowdy.

Harbor Grace—High Constable, Luke Fallon. Sergeant—Frederick Williams.

Carbonear—High Constable, Peter McBaic. Sergeant—Matthew McKee.

INSPECTORS OF WEIGHTS AND MEASURES.

Thomas Brien, St. John's. William Meagher, Harbor Grace. Peter McBaic, Carbonear. William Horwood, Brigus. John Millen, Ragged Harbor to Spiller's Cove, inclusive, (District of Trinity.) William Harding, District of Burin. Henry Camp, from Pass Island to Cape LeHunc, District of Burgeo. John Lawrence, Bonavista South. Charles Harris, Gooseberry and Adjacent Islands. G. W. R. Hierlily, Bay Roberts. William D. Cross, North Side of Trinity Bay. John G. Lucas, Fogo. Marmaduke Glow, District of Ferryland. Albert Stirling, District of Fortune Bay. Frederick Wyatt, Greenspond. W. J. Coen, Grand Bank. James Peyton, Twillingate. John Coffin, King's Cove. John Collis, Trinity. Charles Randall, Hearts Content. Thomas Keefe, Harbor Main. Thomas E. Collett, Harbor Buffett.

Savings' Bank.

Governors—Five members of the House of Assembly and three members of the Legislative Council, viz:—

Hon. C. F. Bennett, Hon. T. Glen, Hon. Major Renouf, Charles Duder, Esq., and Hon. the Speaker of the House of Assembly; Hon. James S. Clift, Hon. William J. S. Donnelly, Hon. Edward White, of the Council.

Directors—Hon. C. F. Bennett, Hon. J. S. Clift, Hon. Major Renouf.

Cashier—Hon. Edward Morris.

The Bank is open every Monday between the hours of 12 and 2 o'clock, for depositors' business.

BRANCH BANK—HARBOR GRACE.

Cashier and Clerk—Alexander Clift.

Board of Health.

Health Officers—Henry Shea, M. D., and Thomas Howley, M. D., St. John's. William Allan, M. D., Harbor Grace. Francis Moran, M. D., Burin. William Stirling, M. D., Twillingate. Hay Findlater, M. D., Fogo. Robert White, M. D., Trinity. Roland M. Nelson, Carbonear. Dr. Bruerton, Fortune Bay. Dr. A. Robillard, Chamel. Dr. Anderson, Brigus and Port-au-Basque. Dr. Skelton, Greenspond. Dr. Alexander, Tilt Cove. Dr. T. Jacobs, Chamel.

Board of Health and Health Wardens for the Town and District of St. John's—Major Renouf, Chairman: Hon. A. W. Harvey, the Hon. Attorney General, Hon. R. Thorburn, Henry Shea, M.D., (Health Officer), Wm. Summs, M. D., Stephen Rendell, Lewis Tessier, James B. Wood, W. P. Walsh, F. R. Smith, R. H. Prowse, R. R. W. Lilly, (Secretary), Charles H. Renouf, M. D., Frederick Bunting, M. D., Charles Crowley, M. D., Thomas Howley, M. D.

Board of Health, Harbor Grace—Israel L. McNeil, William Allan, John Munn, Thomas H. Ridley, Hon. W. J. S. Donnelly, Jas. L. Prendergast, Geo. Rutherford and Lewis W. Emerson.

Board of Health, Carbonear—John Rorke, Edward T. Pike, B. T. H. Gould, Michael Bolger, William P. Taylor, Israel L. McNeil, Dr. Nelson and Michael Dwyer.

Medical Officer to Board of Trade, for Sick Seamen, Port of St. John's—William C. Simms, M. D.

Notaries Public.

St. John's—Hon. George H. Emerson, Robert Prowse, Geo. F. Bown, Frederick B. T. Carter, Robert R. W. Lilly, Hon. Edward Morris, William H. Mare, Thomas J. Kough, William V. White-way, Hon. Nicholas Stabb, Hon. Robert J. Pinsent, Richard B. Holden, Augustus O. Hayward, Henry K. Dickinson, James S. Winter, Robert J. Parsons, jr., John H. Boone, A. J. W. McNeilly, John T. Gillard, Daniel J. Green, John Maher, John A. Rochfort.

Harbor Grace—Lewis W. Emerson, H. A. Clift, William O. Wood. Carbonear—Israel L. McNeil. Twillingate—John Peyton. Bay Roberts—G. W. R. Hierlihy. Burin—Francis Burteau. Fogo—James Fitzgerald. Brigus—George Gushue. Southern District—W. S. Green.

Queen's Printer.

John Collier Withers, Esquire.

Educational Institutions.**ST. JOHN'S ACADEMY.**

Directors—Church of England Board—Right Rev. the Lord Bishop, Hon. the Chief Justice, Hon. Judge Robinson, Hon. F. B. T. Carter, D. W. Prowse. Head Master—Rev. Joseph F. Phelps.

Roman Catholic Board—Right Rev. Dr. Power, Hon. Joseph I. Little, Hon. Thomas Talbot, William P. Walsh, Maurice Fenelon. Masters—Very Rev. P. A. Slattery, Rev. William Fitzpatrick, J. G. Conroy, J. Kinsella, J. Shortall.

General Protestant Board—Walter Grieve, Thomas McMurdo, Hon. P. G. Tessier, William Boyd. Master—Adam Scott.

NEWFOUNDLAND WESLEYAN ACADEMY.

Directors—Rev. John S. Peach, James J. Rogerson, Hon. Nicholas Stabb, Charles R. Ayre, Stephen Rendell. Principal—W. E. Henry, M.A. Second Master—Emile Handcock.

HARBOR GRACE GRAMMAR SCHOOL.

Directors—John Munn, T. Harrison Ridley, Hugh W. Trapnell, John Ryan, D. Greene, Hon. W. J. Donnelly, Mark Parsons. Master—John I. Roddick.

CARBONEAR GRAMMAR SCHOOL.

Directors—Rev. W. J. Hoyles, W. Hawker and John Pearce, Church of England Branch. Rt. Rev. Dr. Carfagnini, Rev. J. O'Connor, Richard McCarthy, Roman Catholic Branch. Rev. James Dove, Israel McNeil, Benjamin T. H. Gould and Wm. Penny, Wesleyan Branch.

COMMERCIAL SCHOOLS.

Brigus—Commissioners, Rev. R. H. Taylor, John C. Nuttall, Thomas Kelly, James Tarahan, John Wilcox, John Bartlett.—Teacher—William Greene.

Bay Roberts—Commissioners, Rev. W. C. Shears, the Wesleyan Minister for the time being, Dr. William Fraser, Isaac Bartlett, Charles Dawe. Teacher—Elias Mare.

Lower Island Cove—Commissioners, Rev. John S. Peach, John Lewis, Levi Garland, William Lacey. Teacher—Joseph Thistle.

Old Perlican—Commissioners, Rev. Thomas Fox, Stephen K. March. Teacher—William Christian.

Bonavista—Commissioners, Peter Ward, John Lawrence.—Teacher—Samuel Rowsell.

Burin—Episcopal Branch, Commissioner, James Norman : Jas. Bristow, Teacher ; Roman Catholic, Michael O'Donnell, Teacher ; Wesleyan, — Bird, Teacher.

Twillingate—Commissioners, Rev. John Reay, John W. Owen, William Lethbridge, Jonathan Mitchell, J. B. Blandford. Teacher—John E. Duder.

Muddy Hole—Teacher, John Wheeler.

Seldom-come-By—Teacher, John Pike.

Bay-de-Verds—Teacher, Patrick Fox.

Harbor Grace—(River Head), Teacher, Michael Scully.

Harbor Main—Teacher, Cornelius Kennedy.

Bay Bulls—Teacher, Terrence Morrissey.

St. Mary's—Teacher, Patrick Walsh.

Great Placentia—Teacher, Walter Joseph Tarahan.

COLONIAL AND CONTINENTAL CHURCH SOCIETY.

[Incorporated 1862—Instituted originally as the Newfoundland School Society, 1823.]

Patron—Her Most Gracious Majesty the Queen. Vice-Patrons—His Grace the Archbishop of Canterbury, His Grace the Archbishop of York, His Grace the Archbishop of Armagh. President—The Most Hon. the Marquis of Cholmondeley, and 68 Vice-Presidents, consisting of Peers of the United Kingdom, English and Colonial Bishops, Deans, Colonial Governors, (including the Governor of Newfoundland) Members of Parliament, &c., &c.

Corresponding Committee in Newfoundland—President, Hon. Frederick B. T. Carter; Vice-President, Hon. Robert J. Pinsky; Treasurer, E. L. Jarvis; Inspector, J. W. Marriott; Secretary, James Bayly; Hon. John Winter, W. V. Whiteway, Nicholas Stabb, jr., J. B. Wood, Theodore Cliff, D. W. Prowse, Hon. J. L. Noonan.

School Teachers—St. John's, (Central School) Mr. Marriott, Acting, Boys; Miss Mills, Acting, Girls; Training Pupil Teachers of the Society, Miss Prowse, Miss Blackler, Miss Wilmore, Miss Adams, Miss Cole, Miss Everett, Miss Martin, Miss Carter; Infants' School, ———. Belloram, Miss Saunders.—Petty Harbor, Mr. and Mrs. Bishop. Portugal Cove, Miss Mullings. Brigus, Mr. and Mrs. Lawrence. Port-de-Grave, Mr. and Mrs. Maddock and Miss Andrews. Spaniard's Bay, Mr. and Mrs. Earle. Bishop's Cove, Miss Pippy. Harbor Grace, Mr. and Miss Ward. Heart's Content, Mr. Gardner. Trinity, Mr. Edwin Collis and Miss Lockyer. Bonavista, Mr. and Mrs. Lawrence. Salvage, Mr. Rowsell. Greenspond, Mr. and Mrs. H. Lind.—Swains Island, Mr. Edward Bishop. Twillingate, Mr. and Mrs. Crosby. Fogo, Mrs. Plomer. Great St. Lawrence, Mr. Pitcher.

WESLEYAN SCHOOL AND AGENCY SOCIETY.

Committee—Rev. T. Harris, Chairman; Rev. James Dove, Secretary; the Ministers of the Newfoundland District, and John Munn, James J. Rogerson, Israel McNeil.

Teachers—Carbonar, Richard Bransfield. Cupids, John C. Moors. Port-de-Grave, John A. Brown. Blackhead, Matthew Hudson. Old Perlican, William Christian. Catalina, Mrs.

Diamond. Flat Islands, Jonathan H. Parsons. Sound Islands, Charles Downs. Green's Harbor, Simeon Reed. Garia, Joseph Troke. Western Point, William Brock. Musgrave Town, Gideon Wny.

PRESBYTERIAN (ST. ANDREW'S) SCHOOL, ST. JOHN'S.

Committee—John Boyd, Secretary; Gilbert Browning, Alexander M. McKay, Andrew Thompson. Teacher, R. Stott, M.A.

BOARDS UNDER EDUCATION ACT.

St. John's—Rev. G. M. Johnson, Rev. G. S. Milligan, A.M., Rev. Moses Harvey, Rev. Thomas M. Wood, William H. Mare, Hon. James S. Clift, Hon. John Winter, M.D., W. V. Whiteway, Q.C., James J. Rogerson, Dr. Crowdy, Rev. R. M. Johnson, Rev. Thomas Hall, Edwin Duder, Rev. E. Botwood.

Harbor Grace—Rev. Bertram Jones, Rev. Charles Ladner, Rev. Alexander Ross, T. Harrison Ridley, Rev. John M. Noel, James Hippisley, William O. Wood.

Carbonear—Rev. James Dove, Rev. William J. Hoyles, and John Rorke, Edward Pike, James Forward, jr., Israel McNeil, and Benjamin Gould.

Bay Roberts—Rev. W. C. Shears, Rev. Thomas Fox, Isaac Bartlett, Charles Dawe, Eli Dawe.

Port-de-Grave—Rev. James C. Harvey, Dr. Brown, J. M. Maddock, John Andrews, Thomas Batten, Rev. J. W. Boyd.

Brigus—Rev. W. E. Shenstone, Rev. Robert H. Taylor, and John Bartlett, John Smith, Abraham Bartlett, George Gushue, John Wilcox.

Bay-de-Verds—Rev. R. W. Freeman, Rev. J. S. Peach, John Lewis, William Larcay, Rev. G. S. Chamberlain, Henry Blundon, (Bay-de-Verds), George Perry.

Trinity Bay North—Rev. Benjamin Smith, and William Pittman, Robert Bayly, Alexander Bremner, jr., Gilbert H. Cole, Dr. Robert White.

Trinity Bay West—Rev. George Gardner, and Robert Ollerhead, James Moore, Robert Rockwood, Charles Randall, Heart's Content; James Wiseman, Heart's Delight; Reuben Bemister, New Perlican; Joseph Haurahan.

Trinity Bay South—Rev. Thomas Fox, James L. Mews, Levi March, Rev. G. S. Chamberlain, Henry Blundon (Bay-de-Verds) E. C. Watson, (Hants Harbor,) W. H. Meadus, (Grates Cove,) Benjamin Benson, jr.

Trinity Bay East—Rev. William Netten, Rev. John Pratt, and Alexander Bremner, William Norman, John Daymond, Arthur Tilley, and Benjamin Snelgrove.

Bonavista Bay North—John T. Oakley, George Skelton, M. D., Darius Blanford, Charles Edwards, Rev. Henry M. Skinner, Rev. John G. Cragg, J. S. Lockyer, Henry Lind.

Bonavista Bay South—Rev. A. E. C. Bayly, Rev. John Goodison, and Jabez Saint, John G. Skelton, William Brown, Stephen Abbott, David Caudow.

Bonavista Bay West—Rev. W. Kirby, Frederick Shears, Open Hall; Samuel Coffin, William Hancock, jr., and John Coffin.

Musgrave Town, Brooklyn, and Portland or James Cove—William Stares, John Hancock, Michael Stares, Gideon Way, Elias Brown, Caleb Reader, Israel Taylor.

Fogo—Rev. William Swan, Rev. Christopher Meek, Hay Findlater, Henry Simmons, James Rolfs, jr., Henry Banks, Kenneth Carter, Robert Scott.

North West Arm of Green Bay to Cape John—Rev. John Lockwood, Jacob Thomas, (Shoe Cove) Leander N. Gill, (Tilt Cove), George Prole, (Indian Burying Place), Charles Collins, Round Harbor.

Twillingate—Rev. Thomas Boone, Rev. John Reay, and John Peyton, William Lethbridge, Rev. Alfred Winsor, (Herring Neck), and William Hudder.

Moreton's Harbor—Rev. Walter Smith, Rev. Simon Dunn, and Josiah Manuel, Exploits; Mark Osmond, William Osmond, John Taylor.

Ferryland—James Carter, John Morry, Peter Winsor, Daniel H. Winsor, William T. S. Carter, Rev. C. Ellingham.

Placentia—Rev. John Kingwell, James Butler, Thomas E. Collet, Thomas Collins, (Oderin), James Hollett, and James Chalmers.

Burin—Rev. G. Forsey, Rev. William Rosier, Francis Berteau, Owen Pine, Richard Willie, George Goddard, and Richard Paul.

Lamaline—Rev. A. E. Gabriel, James Pittman, George Butt, Thomas Lasky, Henry Haskell, Robert Bonnell, John Pittman, Benjamin Bonnell.

Grand Bank—Rev. J. A. Duke, Edward Evans, Capt. Coen, James Hickman, James P. Snook, Edward Bennet, James Lake.

Fortune Bay—Rev. W. K. White, Rev. E. Colley, Thomas R. Bennett.

Burgeo—Rev. John Cunningham, Rev. Edward Colley, George Hunt, M. D., Stephen Vatcher, William Anderson, and James P. LeGros.

LaPoile—Rev. Theophilus G. Netten, Rev. C. Pickles, Thomas Read, Philip Sorsoliel, Frederick Cox, William Stone, James P. LeGros.

Channel—Rev. T. A. Goode, W. S. Green, John Gillham, William Bragg, Edward Gillham, Morgan Genge, Charles Sheaves, Charles E. Cossman.

Inspector of Protestant Schools—John Haddon.

ROMAN CATHOLIC SCHOOLS.

St. John's—Orphan Asylum, (Boys). Teachers—Edward St. George, Robert McKeown; Industrial Department, Bartholomew Connors.

St. Patrick's, River Head—Teacher, Thomas Foster.

Harbor Grace—St. Patrick's Free School, (Boys). Teacher—Patrick Fox.

BOARDS UNDER EDUCATION ACT.

St. John's—Right Rev. Dr. Power, Richard Howley, Hon. Robert Kent, Hon. Edward Morris, Hon. E. D. Shea, John Casey, and J. G. Conroy.

Harbor Grace, Carbonear, Bay-de-Verde and Trinity South and West—Rev. John Walsh, Patrick Devereux, Michael Bolger, Hon. W. J. S. Donnelly, Thomas Green, Daniel Green, and James Bolger.

Brigus—Right Rev. Dr. Carfagnini, Rev. E. F. Walsh, J. Tarahan, James Moore, Patrick Nowlan, Richard Delaney, sr., Patrick Brophy.

Harbor Main—Rev. Jeremiah O'Donnell, William Holden, Richard Woodford, Charles Fury, William Woodford, John Kennedy, and James Hearn, jr.

Trinity Bay North—Rev. William Veitch, and William Hartery, James Connors, Michael Murphy, John Ryan, and John Murphy.

Fogo—Rev. James Brown, and J. Fitzgerald, Miles Burke, (Joe Bat's Arm), William Green, Daniel Bryan, (Tiltou Harbor).

Ferryland—Rev. John Conway, Rev. William Forrestal, and Henry O'Neil, Philip Jackman, Nicholas Power, Richard Cashin, Gerald Jackman.

Bay Bulls—Very Rev. P. Cleary, Rev. Nicholas Roach, and Martin Williams, Michael Driscoll, J. Blackler, Michael Casey, (Witless Bay), and Thomas Gatherall (Balline).

Great Placentia—Rev. Laurence Vereker, F. L. Bradshaw, Maurice Power, Thomas Rielly, John Sinnott, Francis Mooney, Samuel Collins.

Little Placentia—Rev. John Ryan, and Thomas Freeman, Alexander Burke, John Rielly and Thomas Keits.

Placentia West—Rev. James Walsh, and Thomas Sullivan, Timothy Connors, Daniel Ryan, and Dennis Ryan.

St. Mary's—Rev. Richard O'Donnell, Rev. J. Ryan, and J. Walsh, John Grace, William Burke, Michael Fagan, James Murphy, and John Whelan.

Trepassey—Rev. Thomas Hennebury, and James Waddleton, John Tobin, James Devereux, John Neil, jr., and John Hewett.

Burin—Rev. Wm. Born, Richard Marshall, John Power, Matthew Marshall, Wm. Fitzpatrick, Rev. Wm. Doutney, and Thomas Gorman.

Fortune Bay—Rev. R. Brennan, Rev. John Culien, and P. Burke, W. Burke, P. Burke, jr., T. Kinsella and T. Hearn.

Inspector of Roman Catholic Schools—Michael J. Kelly.

Ecclesiastical Department.

CHURCH OF ENGLAND.

DIOCESE OF NEWFOUNDLAND.

The Right Rev. EDWARD FIELD, D. D., Lord Bishop of Newfoundland.

The Right Rev. JAMES B. KELLY, D. D., Coadjutor Bishop.

DEANERY OF AVALON.

Rural Dean—Rev. T. M. Wood.

Rev. G. M. Johnston, Cathedral.

Rev. T. M. Wood, St. Thomas', St. John's.

Rev. A. C. F. Wood, M. A., St. Thomas', St. John's.

Rev. E. Botwood, St. Mary's.

Rev. R. M. Johnson, Pouch Cove.

Rev. R. T. Dobie, Petty Harbor.

Rev. Benjamin Fleet, Foxtrap.

Rev. George Hutchinson, B. A., Topsail.

Rev. Alfred E. Gabriel, Portugal Cove.

Rev. William Pilot, Quidi Vidi.

Rev. Cornelius Ellingham, Aquaforte.

Rev. John Lockward, ———.

DEANERY OF CONCEPTION BAY.

Rural Dean—Rev. James C. Harvey.

Rev. Bertram Jones, Harbor Grace.

Rev. John Godden, Harbor Grace and Bryants Cove.

Rev. William J. Hoyles, Carbonear.

Rev. J. C. Harvey, Port-de-Grave.

Rev. Robert H. Taylor, Brigus.

Rev. W. C. Shears, Bay Roberts.

Rev. J. M. Noel, Upper Island Cove.

Rev. G. S. Chamberlain, Bay-de-Verds.

DEANERY OF TRINITY BAY.

Rural Dean—Rev. B. Smith.

Rev. B. Smith, Trinity.

Rev. Henry Petley, M. A., New Harbor.

Rev. George Gardner, Heart's Content.

Rev. William Netten, Catalina.

DEANERY OF BONAVISTA BAY.

Rural Dean—Rev. A. E. C. Bayly.

Rev. A. E. C. Bayly, Bonavista.

Rev. William Kirby, King's Cove.

Rev. H. M. Skinner, Salvage.

Rev. John G. Cragg, Greenspond.

DEANERY OF NOTRE DAME.

Rural Dean—Rev. Frederick R. Murray.

Rev. Frederick R. Murray, Twillingate.

Rev. Alfred Winsor, Herring Neck.

Rev. Christopher Meek, Fogo.
 Rev. Robert Temple, White Bay.
 Rev. Walter Smith, Exploits, Burnt Island.

DEANERY OF PLACENTIA BAY.

Rural Dean— — — — —.

Rev. J. Kingwell, Harbor Buffett.
 Rev. W. Rozier, Burin.
 Rev. Josiah Darrel, Lamaline.

DEANERY OF FORTUNE BAY.

Rural Dean—Rev. W. K. White.

Rev. W. K. White, Harbor Briton.
 Rev. E. Colley, Hermitage Cove.
 Rev. J. Cunningham, Burgeo.
 Rev. Theophilus G. Netten, LaPoile.
 Rev. Alfred C. Warren, St. George's Bay.
 Rev. Joseph J. Curling, Bay of Islands.
 Rev. John Bishop, Bellorant.
 Rev. T. A. Goode, Channel.

LABRADOR.

Rev. George Bishop, Battle Harbor.

RETIRED CLERGYMAN.

Rev. Thos. Boone, late Rural Dean, Notre Dame Bay.

THEOLOGICAL INSTITUTION.

Visitor—The Lord Bishop.

Principal— — — — —.

Vice-Principal—Rev. William Pilot.

Students—Thomas P. Massiah, William A. White, Frederick Skinner, Albert S. Norfolk, John T. Moore, James Barber.

NEWFOUNDLAND CHURCH SOCIETY.

Patron—His Excellency the Governor.

President—The Right Rev. the Lord Bishop.

Vice-Presidents—The Revds. the Deans.

Treasurer—William H. Mare.

Secretary—Rev. G. M. Johnson.

Committee—J. C. Withers, W. V. Whiteway, Q. C., E. Duder, Hon. F. B. T. Carter, Q. C., C. Crowdy, M. D., N. S. Stabb, H. Le-Messurier, Joseph Crowdy, Hon. J. S. Clift, Thomas Clift, A. O. Hayward, Hon. Judge Robinson, Hon. A. W. Harvey, G. J. Hayward.

DIOCESAN SYNOD OF NEWFOUNDLAND.

Executive Committee—The Right Rev. the Bishop of the Diocese, the Right Rev. the Coadjutor Bishop, Rev. A. C. F. Wood, Rev. G. M. Johnson, Rev. E. Botwood, Rev. J. F. Phelps, Hon. Judge Robinson, Hon. R. J. Pinsent, Q. C., P. Emerson, Q. C., Hon. A. W. Harvey, G. T. Rendell.

ROMAN CATHOLIC CHURCH.

Bishop—Right Rev. Dr. THOMAS JOSEPH POWER.

Vicar-General—Very Rev. THOMAS O'CONNOR, P.P.

Dean—Very Rev. PATRICK CLEARY, P.P.

St. John's—Cathedral—Very Rev. T. B. McGrath, Adm., Rev. John Scott, Rev. Patrick Delaney, Rev. M. F. Howley, D. D.

St. Bonaventure College—President, Very Rev. P. A. Slattery; Dean, Rev. Wm. Fitzpatrick.

St. Peter's Chapel, Queen's Street—Attended by a Clergyman from the Cathedral.

St. Patrick's, River Head—Rev. John Ryan, Rev. R. Dunphy.

Petty Harbor—Rev. John Walsh.

Portugal Cove and Torbay—Very Rev. T. O'Connor, P.P., V.G., Rev. M. J. Clarke.

Witless Bay and Bay Bulls—Very Rev. Dean Cleary, P.P., Rev. N. Roach.

Ferryland and Cape Broyle— — — — —

Fermeuse and Rensers—Rev. John Walsh.

Trepassey—Rev. Thomas Hennebury, P.P.

St. Mary's and Salmonier—Rev. Richard O'Donnell, P.P., Rev. M. Clancey.

Great Placentia—Rev. Charles Irvine, Rev. James Whelan.

Little Placentia—Rev. R. Brennan.

St. Ryan's—Rev. L. Vereker.

Burin—Rev. Wm. Born, P.P.

Oderin—Rev. M. Morris.

St. Lawrence—Rev. Wm. Doughty.

Lamaline— — — — —

Harbor Briton—Rev. Wm. Forrestal.

St. Jacques—Rev. Vincent Reardon.

PREFECTURE APOSTOLIC.

St. George's Bay—Prefect Apostolic, Very Rev. T. Sears.

CONVENTS.

St. John's—Presentation Convent, Military Road; Mercy Convent, Military Road; Presentation Convent, Patrick's Street; Mercy Convent, Belvidere.

Torbay—Presentation Convent.

Witless Bay—Presentation Convent.

Burin—Mercy Convent.

Ferryland—Presentation Convent.

Fermeuse—Presentation Convent.

St. Lawrence—Mercy Convent.

Great Placentia—Presentation Convent.

St. Mary's—Presentation Convent.

Harbor Briton—Presentation Convent.

An Orphanage for girls, at Belvidere; Orphan Asylum for boys, Cathedral Hill; Hospital, Lunatic Asylum, Work-house.

DIOCESE OF HARBOR GRACE.

The Right Rev. HENRY CARFAGNINI, D.D., O.S.F., Lord Bishop of Harbor Grace.

Very Rev. Jeremiah O'Donnell, Vicar General of the Diocese.

Harbor Grace—Very Rev. James Cummins, Administrator, Rev. William Veitch, C.C.

Carbonear—Rev. J. O'Connor, C.C.

Brigus—Very Rev. P. Duffy, P.P., Rev. E. F. Walsh, C.C.

Harbor Main—Very Rev. J. O'Donnell, P.P., Rev. P. O'Donnell, C.C.

Northern Bay—Rev. J. Donnelly, Adm.

Bonavista— — — — —.

King's Cove—Rev. J. Walsh, P.P.

Tilton Harbor—Rev. James Brown, P.P.

Fortune Harbor—Attended from Tilton Harbor.

La Couche—Attended from Tilton Harbor.

Labrador—Attended once a year by a Priest from Harbor Grace.

Convents—3 of the Presentation Order, and 2 of the Order of Mercy.

WESLEYAN METHODIST CHURCH.

The Rev. GEORGE S. MILLIGAN, M.A., Chairman of the District.

The Rev. JOSEPH PASCOE, Financial Secretary.

ST. JOHN'S DISTRICT.

St. John's—Rev. George S. Milligan, M.A., Rev. Jos. Pascoe, Rev. James Nurse.

Bonavista—Rev. John Goodison,

Twillingate—Rev. John Reay.

Burin—Rev. George Forsey.

Grand Bank and Fortune—Rev. James A. Duke, Rev. Charles Mearing.

Port au Basque—Rev. Chas. Pickles, Rev. Jer. Embree.

Exploits and Moreton's Harbor—Rev. Simeon Dunn.

Greenspond—Rev. Solomon Matthews.

Fogo—Rev. William Swan.

Musgrave Town—Rev. John P. Bowell.

Musgrave Harbor—One to be sent.

Little Bay Islands and Tilt Cove—Rev. Charles Myers, Rev. Samuel Snowden.

French Shore—Rev. Alexander McGregor.

Flat Island and Sound Island—Thomas H. James, under the superintendence of Bro. Forsey.

Bay of Islands and Bonne Bay—Rev. Jabez Hill.

St. Pierre—Rev. Jos ph Parkins.

Fortune Bay—Charles Mearing during summer months.

CARBONEAR DISTRICT.

The Rev. THOMAS HARRIS, Chairman of the District.

The Rev. JAMES DOVE, Financial Secretary.

Carbonear—Rev. James Dove, Rev. John G. Currie.

Harbor Grace—Rev. Charles Ladner.

Brigus—Rev. Thomas Harris, Rev. W. E. Shenstone, Sup'y.

Port-de-Grave and Bay Roberts—Rev. George Boyd.

Black Head—Rev. John S. Peach.

Island Cove—Rev. R. W. Freeman.

Perlican—Rev. Thomas Fox.

Hants Harbor—Rev. Joseph Hale.

Catalina—Rev. John Pratt.

Trinity—Rev. John Dickson.

Shoal Harbor—Rev. Thomas W. Atkinson.

Green's Harbor—Rev. George H. Bryant.

Labrador—Rev. John G. Currie, during the summer months.

CHURCH OF SCOTLAND.

The Rev. Mr. MACDOUGALL, St. Andrews Church, St. John's.

CONGREGATIONAL CHURCH.

The Rev. THOMAS HALL, Queen's Road Chapel, St. John's.

The Rev. Thomas Harrington.

The Rev. J. Quinn.

FREE PRESBYTERIAN CHURCH.

The Rev. MOSES HARVEY, St. John's.

The Rev. Alexander Ross, Harbor Grace.

LAYMEN LICENSED TO CELEBRATE MARRIAGE.

Charles Harris, Gooseberry Island.

George Goodridge, Labrador.

St. John's and Newfoundland Auxiliary Bible Society.

His Excellency the Governor, Patron. Hon. Nicholas Stabb, President. Stephen Rendell, Hon. John Winter, Hon. P. G. Tessier, William Boyd, J. Goodfellow, J. J. Rogerson, Vice-Presidents. Robert Brown, Treasurer. Rev. Moses Harvey, J.

Fogo; Gilbert Humphrey Cole, Trinity; Philip Sorsoliel, Rose Blanche; Philip Hubert, Harbor Breton; Henry F. Holman, Gaultois; Franchi Berneau; Barin.

North German Confederation—Robert H. Prowse, Consul, St. John's.

Hamburg—Robert H. Prowse, Consul.

France—J. C. Toussaint, Vice-Consul for Newfoundland.

Denmark — — — — —, Consul for Newfoundland.

Italy—James Bayly, Consular Agent for Newfoundland.

United States of America—Thomas N. Molloy, Consul for Newfoundland. Consular Agent, Harbor Grace, P. Dieveroux.

Sweden and Norway—Robert H. Prowse, Vice-Consul for Newfoundland.

Naval.

Commander-in-Chief on the West India and North American Station—Vice-Admiral Edward Gennys Fanshawe, C. B.

Newspapers Published in the Colony.

Courier—Published every Wednesday and Saturday morning.

Commercial Journal—Published every fortnight, immediately previous to the closing of the Mail per Halifax steamer.

Express—Published every Tuesday, Thursday and Saturday morning.

Hearts Content Aurora—Published every month.

Indicator—Published every fortnight.

Morning Chronicle—Published every morning, Sundays excepted.

Newfoundlander—Published every Tuesday and Friday morning.

North Star—Published every Saturday morning.

Public Ledger—Published on Tuesday and Friday mornings.

Patriot—Published every Monday afternoon.

Royal Gazette—Published every Tuesday.

Semi-Weekly Chronicle—Published every Tuesday and Friday morning.

Standard (Har. Grace)—Published every Wednesday morning.

Star (Harbor Grace)—Published every Tuesday and Friday morning.

Times—Published every Wednesday and Saturday morning.

Telegraph—Published every Wednesday morning.

Temperance Journal—Published on the 1st and 15th of every month.

St. John's Athenaeum.

William Boyd, President. Hon. R. Kent, James Baird, Vice-Presidents. Alexander Taylor, Secretary. W. D. Hally, and

M. Munroe, Curators. Committee—Rev. J. M. Harvey, James Fox, William Ritchie, James S. Winter, Charles T. Ryland, David Schuler, William Pitts, T. McGonnan, C. K. Duncan, and A. J. W. McNeilly.

G. Barnes, Librarian and Superintendent of Rooms.

St. Joseph's Catholic Institute.

Established 26th May, 1872, on the amalgamation of the Catholic Institute and St. Joseph's Association. Patron—The Most Rev. Thomas J. Power, Bishop of St. John's. Spiritual Director, Rev. M. F. Howley, D. D. Robert J. Kent, President. W. P. Walsh, Vice-President. Richard Buftus, 1st Assistant Vice-President. Wm. Donnelly, 2nd Assistant Vice-President. Laurence Barron, Treasurer. Wm. J. Hogan, Secretary. Edward St. George, Librarian. Council—Wm. Doutney, Joseph Baldwin, Patrick J. Scott, James J. T. Parker, James P. Furlong, John Maher, Laurence Comerford, Laurence White.

Wesleyan Academic Literary Institute.

President, W. E. Henry, M.A. 1st Vice-President, C. R. Ayre. 2nd Vice-President, J. A. Whiteford. Secretary, S. R. March. Treasurer, A. J. W. McNeilly. Librarian, A. Martin. Committee—G. W. Mews, H. J. B. Woods, E. Peters.

Harbor Grace Literary Institute.

Hon. W. J. S. Donnelly, President. L. W. Emerson, R. S. Munn, Vice-Presidents. J. Bemister, Treasurer. Stuart Munn, Secretary. Committee—W. H. Thompson, James Hippiisley, Robert Bremner, E. M. Quinton, Felix McCarthy.

Masonry.

[Under the jurisdiction of the Grand Lodge of England.]

Hon. J. S. Clift, District Grand Master; W. V. Whiteway, Deputy D. G. Master; N. S. Stabb, D. G. Senior Warden; J. F. Chisholm, D. G. Junior Warden; ———, D. G. Chaplain; C. S. Pinsent, D. G. Treasurer; H. T. B. Wood, D. G. Secretary; R. T. Rankin, D. G. Senior Deacon; J. S. Hayward, D. G. Junior Deacon; M. Munroe, D. G. Master of Ceremonies; A. J. W. McNeilly, D. G. Organist; G. G. Geddes, D. G. Pursuivant; W. Smith, D. G. Tyler.

The District Grand Lodge holds Quarterly Communications.

St. John's Lodge, No. 579—R. T. Rankin, W.M.; A. J. W. McNeilly, S.W.; A. Pearce, J. W.; H. Cooke, Treasurer; H. T. E. Wood, Secretary; W. Irving, S. D.; J. Rodger, J. D.; G. Garland, and E. M. Archibald, Stewards; J. Hill, I. G.; W. Smith, Tyler.

Meetings on the first Friday in every month, at Masonic Hall, British Square.

Avon Lodge, No. 776, R. L. Jas. L. Duchemin, W.M.; H. Henderson, S.W.; H. Langston, J.W.; Joseph Wilson, Secretary;

Thomas Withycombe, Treasurer; John Crossman, S.D.; Walter Williams, J.D.; William Winsborrow and Charles Lewis, Stewards; Edward White, I.G.; William Smith, Tyler.

Meetings on the second Thursday in every month, at Masonic Hall, British Square.

Hiram Lodge, Barin, No. 1281 — George Bishop, W. M.; John Weare, S.W.; George Goddard, J.W.; Phillip Pine, Secretary; John Paul, Treasurer; Daniel Bishop, S.D.; Wm. Pine, J. D.; George Collins, and Gabriel Goddard, Stewards; William Collins, I.G.; Joseph Dibbin, Tyler.

Victoria Lodge, Fortune, Fortune Bay, No. 1373—J. P. Snook, W.M.; W. P. Lake, S. W.; George Tuck, J. W.; Elias Major, Treasurer; W. J. Coen, Secretary; A. Forward, S.D.; William Buffett, J.D.; John E. Lake, and Eli Tuck, Stewards; John Spence, I.G.; H. J. Haddon, Tyler.

[Under the jurisdiction of the Supreme R.A. Chapter of England.]

St. John's R. A. Chapter—J. S. Clift, P.P.Z.; N. S. Stabb, P.Z.; J. F. Chisholm, P.H.; M. Munroe, P. J.; O. S. Pinsent, S. E.; J. S. Hayward, S. N.; G. G. Geddes, P.S.; A. J. W. McNeilly, S.S.; W. R. Stirling, J. S.; H. J. Stabb, Treasurer; William Smith, Janitor.

[Under the jurisdiction of the Grand Lodge of Scotland.]

Alexander M. McKay, Provincial Grand Master.
 W. T. Parsons, Deputy Grand Master.
 T. H. Ridley, Substitute Grand Master.
 J. N. Finlay, Senior Grand Warden.
 W. M. Warren, Junior Grand Warden.
 Alexander Graham, Grand Treasurer.
 Prescott Emerson, Grand Secretary.
 William P. Munn, Grand Clerk.
 Rev. Moses Harvey, Grand Chaplain.
 E. L. Moore, Senior Grand Deacon.
 W. D. Morrison, Junior Grand Deacon.
 John P. Fox, Grand Architect.
 John Carnel, Grand Steward.
 A. Martin, Grand Marshal.
 W. Cooke, Grand Inner Guard.
 William Smith, Grand Tyler.

The Provincial Grand Lodge holds Quarterly Communications.

Tasker Lodge, No. 454 R. S.—Edward Rothwell, R.W.M.; Hon. R. J. Pinsent, W.S.W.; Wm. S. Canning, W.J.W.; John R. Hughes, Treasurer; John W. Collier, Secretary; Rev. Moses Harvey, Chaplain; R. A. McCoubrey, S.D.; Jas. Jardine, J.D.; A. Rankin and John Farquhar, Stewards; Robert Mellis, I.G.; Wm. Smith, Tyler.

Meeting on the third Thursday in every month, at Masonic Hall, British Square.

Harbor Grace Lodge, No. 475 — — — — —, R.W.M.; H. W. Thompson, S.W.; James Hutchings, J.W.; John Paterson, Trea-

urer; S. G. Allan, Secretary; John Strathie, S.D.; Otto Kruger, J. D.; A. Ross, Chaplain; Joseph Drover, Bible Bearer; George McLea and Robert McRae, Stewards; John Trapnell, I.G.; Fitz Grimm, Tyler.

Medical Society, St. John's.

[Incorporated April, 1867.]

Henry Shea, M.D., President; C. H. Renouf, M.D., Treasurer; Thomas Howley, M.D., Secretary; Wm. C. Simmus, M.D., Henry Hunt Stabb, M.D., Frederick Bunting, M.D., Charles Crowdy, M.D.

Newfoundland Tariff,

According to Revenue Act passed 18th April, 1872.

Horses, Mares, &c., each	\$2.30
Sheep, Pigs, and Calves	0.23
Oxen and Cows, the \$100	5.00
Ale, Porter, Cider and Perry, the gallon	0.10
Apples, the barrel	0.30
Bacon, Hams, Tongues, Smoked Beef and Sausages, the cwt.	2.00
Beef, and Pig's Heads, salted and cured, the barrel of 200 lbs.	0.60
Biscuit or Bread, the cwt.	0.07
Butter, the cwt.	1.12
Cheese, the cwt.	1.50
Chocolate and Cocoa, the lb.	0.04
Cigars, 5 per cent. <i>ad valorem</i> , and the M... .. .	0.46
Coffee, the lb.	0.03
Coal, imported or brought into the port of St. John's, the ton	0.25
Confectionary, the cwt.	3.50
Feathers and Feather Beds, the lb.	0.05
Fish—salted, dried, and pickled, the cwt.	1.32
Flour, the barrel	0.20
Fruit—dried, the lb.	0.04
“ Other descriptions, (except Apples) the \$100	5.00
Lumber, the M.	1.00
Molasses, the gallon	0.06
Oatmeal, the barrel	0.20
Indian Meal and Pease, the barrel	0.15
Pork, the barrel of 200 lbs.	1.00
Salt, the ton	0.20
Shingles, the M	0.10
Shooks and Staves (manufactured and dressed) the \$100	20.00
Spirits, viz :—Brandy or other Spirits, not herein defined or enumerated, and not exceeding the strength of proof by Sykes's Hydrometer and so in proportion for any greater strength than the strength of proof, the gallon	1.30

All other Spirits, of greater strength than forty-three over proof, shall be deemed to be undefined Spirits, and subject to duty accordingly.	
Gin and rum, not exceeding the strength of proof by Sykes's Hydrometer, and so in proportion for any greater strength than the strength of proof, the gallon.	\$0.70
Whiskey, not exceeding the strength of proof by Sykes's Hydrometer, and so in proportion for any greater strength than the strength of proof, the gallon.	0.90
Cordials, Shrub, and other Spirits, being sweetened or mixed, so that the degree of strength cannot be ascertained as aforesaid, the gallon	0.60
Sugar—Loaf and refined, the cwt.	3.50
“ Unrefined, the cwt.	2.00
“ Bastard, the cwt.	2.50
Tea—Souchong, Congou and Bohea, the lb.	0.10
“ All other sorts, the lb.	0.12
Tobacco—Manufactured, the lb.	0.12
“ Leaf, the lb.	0.10
“ Stems, the cwt.	0.50
Timber, the ton	0.30
Vinegar, the gallon	0.10
Wines, viz :—Champagne, the gallon	1.50
Port, Madeira, Hock and Burgundy, the gallon	1.10
Sherry, 12½ per cent. <i>ad valorem</i> , and the gallon. .	0.72
Spanish Red, Denis, Sicilian, Figueira Red, Lisbon Common, Manzanilla, Cape Malaga, and Claret, the gallon	0.30
All other Wines, 12½ per cent. <i>aa valorem</i> , and, the gallon	0.60
Ready-made Clothes, viz :—Coats, Jackets, Trowsers, Waistcoats, and Southwesters, the \$100	20.00
Stockings, Shirts and Drawers, (made by hand and not woven) the \$100	20.00
Mantles, Dresses, Cloaks, Sacks, the \$100	20.00
Candles, the \$100	20.00
Manufactures of Wood, (except Cabinet Wares, Musical Instruments, and Agricultural Implements) the \$100	20.00
Empty Casks of all kinds, not containing Merchandize—including Fish Boxes and returned Casks, the \$100	20.00
Packages in which Dry Goods are imported, the \$100	13.00
Fresh Meat and Poultry, the \$100	5.00
Anchors and Chain Cables, Copper and Composition Metal for Ships, viz :—Bar, Bolt, and Sheathing; Nails: Iron, viz :—Bar, Bolt, Sheathing, and Sheet; Wrought Nails; Cordage and Hemp Cables; Oakum; Canvas; Clerks and Corkwood; Pitch, Tar, Resin, Raw	

Goo

Bra

Giz

Wh

Mur

Prim

Prim

Coin

Fre

Wh

Plan

Unr

Spe

Wo

Art

Art

Mar

Agr

Agr

Arr

Pas

Pas

Rel

Veg

Hic

Coc

Art

	Turpentine; Fishing Tackle, Masts and Spars, Staves, undressed; Oats, Rice, Indian Corn, Bran, Barley, Medicines, the \$100	\$5.00
\$0.70	Goods, Wares and Merchandize, not otherwise enumerated, described or charged with duty in this Act, and not otherwise exempt, the \$100	15.00

LOCAL DISTILLATION.

0.90	Brandy, not exceeding the strength of proof by Sykes's Hydrometer, and so in proportion for any greater strength than the strength of proof, the gallon	0.81
0.60	Gin, not exceeding the strength of proof by Sykes's Hydrometer, and so in proportion for any greater strength than the strength of proof, the gallon	0.69
3.50	Whiskey, not exceeding the strength of proof by Sykes's Hydrometer, and so in proportion for any greater strength than the strength of proof, the gallon	0.71
2.00	Plum, not exceeding the strength of proof by Sykes's Hydrometer, and so in proportion for any greater strength than the strength of proof, the gallon	0.50
2.50		
0.10		
0.12		
0.12		
0.10		
0.50		
0.30		
0.10		
1.50		
1.10		
0.72		

TABLE OF EXEMPTIONS.

	Printing Presses, Printing Paper, (Royal and Demy), Printing Types and all other Printing Materials	
	Printed Books and Pamphlets, Maps and Charts	
0.30	Coin and Bullion, Hemp, Flax, Tow	
	Fresh Fish, Bait	
0.60	Wheat, Eggs	
	Plants, Trees, Shrubs	
20.00	Unmanufactured Wool and Raw Cotton	
	Specimens illustrative of Natural History	
20.00	Works of Art—viz., Engravings, Paintings and Statuary, not intended for sale	
20.00	Articles imported for Religious purposes, and not intended for sale	
	Manure of all kinds	
20.00	Agricultural Implements and Machinery imported by Agricultural Societies, for the promotion of Agriculture	
	Arms, Cloth and Provisions for Her Majesty's Land and Sea Forces	
20.00	Passengers' Baggage, Household Furniture, and Working Tools and Implements, used and in the use of persons arriving in the Island	
13.00	Refuse Rice, Seeds for Agricultural purposes	
5.00	Vegetables of all sorts	
	Hides and pieces of Hides, not tanned, carried or dressed	
	Coals, (when not imported or brought into the Port of St. John's)	
	Articles of every description imported for the use of the Governor	

Donations of Clothing specially imported for distribution gratuitously by any Charitable Society

Cotton Yarn

Pig Iron, Coke

Bark for Tanning Leather

Sulphuric Acid when used for the manufacture of Manure

Twines, to be used in manufacturing Nets in this Colony

Dye Stuffs

Junk, Old Iron, Old Copper and Composition-metal

Articles for the official use of Foreign Consuls

Steam Engines, Boilers, Water-wheels, and Saws when used in the original construction of Mills or Factories, also crushing Mills for mining purposes

Philosophical Instruments and apparatus, including Globes, when imported and for the use of Colleges and Schools, Scientific or Literary Societies

Materials for sheathing the bottoms of Vessels, such as Zinc, Copper, and Composition-metal together with nails, Paper or Felt, which may be used under the same

It shall not be lawful for any Importer of dried Fish to Warehouse the same in any of the Ports of this Colony or its Dependencies, without the payment of the duty hereinbefore imposed; and the provisions of any Act of this Colony with regard to the Warehousing of Goods on the first entry thereof, or to the allowance of drawbacks upon exportation, shall not in either case apply to or be construed to apply to such fish. Provided, that the section shall not apply to such fish of British catch and cure, unless otherwise declared by Proclamation of the Governor, published in the *Royal Gazette*.

All Yachts sailing under Warrant of the Lords of the Admiralty, or belonging to the Royal Yacht Club, shall be exempted on view of the said Warrant, from payment of all local Duties whatsoever.

Life, Fire and Marine Insurance Companies.

Phoenix Fire Insurance Company of London—Established 1782. Agent for Newfoundland, W. & G. Rendell, St. John's.

Pelican Life Insurance Company of London—Established 1797. Agent for Newfoundland, W. & G. Rendell, St. John's.

Agents for Lloyds—Bowring Brothers, St. John's. Ridley & Sons, Harbor Grace. Philip De Quetteville & Brothers, Labrador. John P. Frecker, St. Pierre. Francis Berteau, Burin and Mortier.

The Royal Insurance Company, for Fire, Life and Annuities—Royal Insurance Buildings, Liverpool; and 29 Lombard Street, London. Capital £2,000,000 sterling. Job, Brothers & Co., Agents Newfoundland Branch.

Liverpool, London and Globe Fire and Life Insurance Company—Established 1836. Capital £2,000,000 sterling. Invested Fund, £3,859,392. Annual Income, over £1,377,347 sterling. Bowring Brothers, Agents for Newfoundland.

Briton Medical and General Life Association, London—St. John's Branch, J. S. Winter, Agent.

Queen Insurance Company of Liverpool and London, for Fire and Life. Capital, £2,000,000 sterling. Simon Donovan, Agent for Newfoundland and St. Pierre. Andrew T. Drysdale, Sub-Agent, Conception Bay. R. O. Sheehan & Co., Sub-Agents, St. Pierre.

Imperial Fire Insurance Company of London—Established 1803. Capital subscribed and invested, £1,600,000. Agents for Newfoundland, J. & W. Stewart.

Star Life Assurance Society, Chief Office, 48 Moorgate Street, London. St. John's—W. C. Simms, M. D., Medical Referee, Agent for Newfoundland, Henry J. B. Woods.

Liverpool Underwriters' Association—Bidley & Sons, Harbor Grace, Agents.

Union Marine Insurance Company, (of Newfoundland.) Directors—Allan Goodridge, President; Hon. P. G. Tessier, L. Tessier, C. Bowring, E. Duder, S. Rendell, A. Graham, T. H. Walters, J. Goodfellow, G. Browning. Secretary—E. L. Jarvis.

Life Association of Scotland—L. L. Jarvis, Agent.

The Lancashire (Fire and Life.) Insurance Company—Capital, £2,000,000 sterling. Agent—E. L. Jarvis. Sub-Agent, D. J. Greene.

Notre Dame Mining Company. Directors—C. Bowring, President. J. H. Warren, R. Harvey, W. H. M. Warren, Thomas Knight, C. S. Pinsent, H. G. H. Gill. Secretary and Treasurer—E. L. Jarvis.

Northern Insurance Company of London. Established in 1836. Capital £2,000,000 sterling; accumulated Funds, upwards of £700,000; annual Revenue, over £230,000. Agent for Newfoundland, Augustus O. Hayward.

Standard Life Assurance Company of Edinburgh. Local Directors.—Hon. A. W. Harvey, W. D. Mare, and J. Howe. Agent and Secretary—Henry J. Stabb.

North British and Mercantile Insurance Company—Established 1809. Incorporated by Royal Charter and Special Act of Parliament. Agent for Newfoundland, Hon. Ambrose Shea.

Mutual Life Assurance Company, of New York. N. J. Stabb, Agent for Newfoundland.

Commercial Union Assurance Society, 16, Cornhill, London—Fire, Life and Marine. Capital, £2,500,000. Agent, St. John's, H. J. Stabb.

Guardian Fire and Life Assurance Company—Established 1821. Subscribed Capital £2,000,000 sterling. J. S. Winter, Agent for Newfoundland. ——— Godden, Sub-Agent, Harbor Grace.

Union Mutual Life Insurance Company—W. H. Thompson, Harbor Grace, General Agent for Newfoundland. Assets January 1, 1871, \$5,295,233.27. Divisible Surplus, \$100,000.

Mutual Marine Insurance Club of Conception Bay—Hon. W. J. S. Donnelly, Treasurer. John Fitzgerald, Secretary.

Mutual Insurance Society of Brigus, Conception Bay—Geo. Gushue, Treasurer and Secretary.

Joint Stock Companies, Public Societies, &c.

St. John's Gas Light Company—Directors, Charles Bowring, President. David Selater, Vice-President. J. B. Wood, Jas. Baird, Robert H. Prowse, Robert Hunt, Richard Harvey. W. F. Rankin, Secretary. James Rooney, Manager.

Harbor Grace Gas Company—Directors, Hon. W. J. S. Donnelly, President. John Munn, T. H. Ridley, Robert S. Munn, Vice-Presidents. Patrick Devereaux, G. C. Rutherford, John Paterson. C. Watts, Treasurer and Secretary. John Strathie, Manager.

General Water Company St. John's—Incorporated 1850. Directors—Hon. R. Thornburn, President; Hon. James S. Clift, Director and Secretary. James H. Longman, Director. Hon. J. B. Wood, Secretary. Michael B. Kennedy, Clerk and Accountant; Thomas W. Vincent, Collector; John Martin, Engineer.

Harbor Grace Water Company. Directors—Thomas H. Ridley, President. Hon. W. J. S. Donnelly, Treasurer. John Munn, David Grant, George Prowse, and John Fitzgerald; H. T. Moore, Government Engineer. C. Watts, Secretary.

Agricultural Society—His Excellency the Governor, Patron. Stephen Rendell, President. Hon. George Robinson, J. T. Nevill, James Baird, and J. C. Wilkies, Vice-Presidents. Joseph Crowley, Treasurer. W. P. Rennie, Secretary.

St. John's Naval and Ecclesiastical Society—President, Hon. R. J. Vincent, Q. C. Vice-President, S. Rendell. Hon. Treasurer and Secretary, J. J. Leach.

Harbor Grace Agricultural and Horticultural Society—H. T. Moore, President. A. Church, Esq., and G. Makinson, Vice-Presidents. G. C. Rutherford, Treasurer. Claudius Watts, Secretary.

Newfoundland Library Society—Capt. William Jackman, President. Capt. J. Jones, Vice-President. Capt. Ryan, Assistant Vice-President. J. O'Neil, Custodian, Treasurer. John H. Bay, Second Treasurer. E. Barron, Third Treasurer and Secretary. Michael Leach, Assistant Secretary.

Trichinopoly Female Society—Rev. G. Gardner, President. A. J. A. and J. Hopkins, Vice-Presidents. G. Rendell, Secretary. J. P. O'Neil, Assistant Secretary. Richard Moore, Treasurer. G. Moore, Assistant Treasurer.

Thouling Bay Stock Company—S. Rendell, President. Directors—Charles Sawyer, L. Fenwick, J. Goodfellow, J. McLoughlan, Richard Jones, A. Thornburn.

Vail's John Stock Company for Ship Biscuit Baking—E. Duden, President; C. Bowring, Hon. A. W. Harvey, John Munn, W. H. Here, Directors. William Wheatley, Manager.

St. John's Flouring Company—Robert Alexander, Charles Bowring, James H. Walters, James Goodfellow, Robert Griev, Stephen Rendell, Hon. Augustus W. Harvey. T. H. Walters, Managers.

St. John's Phoenix Volunteer Fire Company—Francis Boggan, First Director. Philip Quirk, Second Director. M. Linagar, Treasurer. W. Harris, Secretary.

Cathedral Fire Brigade—William McGrath, First Director. Charles Gamburg, Second Director. William Row, Treasurer. J. Donnelly, Secretary.

Harbor Grace Volunteer Fire Company—Michael Hartery, First Director. John Strathie, Second Director. Patrick Walsh, Treasurer. Patrick Rohan, Secretary.

Manufactories, Mills, &c., St. John's—2 Saw Mills, 1 Gas Manufactory, 1 Iron Foundry, 1 Distillery, 2 Breweries, 1 Water Works, 4 Bakeries (by Machinery), 1 Patent Slip, 1 Floating Dock, 2 Tanneries, 1 Boot and Shoe Manufactory. Harbor Grace—1 Gas Manufactory, 1 Water Works, 1 Patent Slip. Exploits Bay—2 Saw Mills. Middle Arm of Green Bay—1 Saw Mill. Exploits, Burnt Island—2 Saw Mills. Hall's Bay—2 Saw Mills. Trinity Bay—8 Saw Mills. Dominion Point, Exploits Bay—1 Saw Mill. Bonavista Bay—1 Saw Mill.

Benevolent and Charitable Societies.

Benevolent Irish Society—Founded 1840—Right Rev. Dr. Power, Patron. Hon. Edward Morris, President. Maurice Fenelon, Vice President. Thomas S. Dwyer, First Assistant V. P. R. J. Kent, Second Assistant V. P. Michael Berney, Treasurer. Henry V. Borne, Secretary. William Douthey, Chairman Orphan Asylum Schools. Charles Piddham, Chairman Charity. Richard R. Ross, Chairman of Relief and Correspondence. Thomas Mitchell, Secretary Orphan Asylum Schools.

Church of England Asylum for Widows and Orphans—His Excellency, the Governor, Patron. The Right Rev. the Lord Bishop, Visitor and President. ——— and Rev. T. M. Wood, Vice-Presidents. The Right Rev. the Vicar and President (*ex officio*), Henry E. Dickinson, Hon. John Winter, M.D., Trustees. Hon. James S. Clift, Treasurer. Rev. G. M. Johnson, Honorary Secretary. Charles Crowdy, M. D., Physician. Committee—Hon. F. L. T. Carter, Rev. E. Botwood, Hon. Judge Robinson, Hon. A. W. Harvey, W. V. Whiteway, Charles Bowring, W. H. Mars, E. Duder, P. Hutchins, G. J. Hayward.

Depositary of Society for Promoting Christian Knowledge—Committee—Rev. G. M. Johnson, J. C. Willers and W. V. Whiteway. Keeper, Mrs. Bond.

St. John's Industrial Society—Patron, Mrs. Hill. President, Mrs. J. B. Wood. Vice-President, Mrs. Goodfellow. Treasurer, Miss Whiteford. Secretary, Mrs. A. C. D. Wood. Committee—Mrs. Bond, Mrs. J. Burtel, Mrs. Holton, Mrs. March, Mrs. Lash, Mrs. Milroy, Mrs. Windsor, Mrs. Boyd, Mrs. M. Harvey, Mrs. Goodridge, Mrs. Prowse, Miss Stabb, Miss Goodridge, Miss Alexander, Miss Pitt, Miss Pitts.

St. George's Society—George T. Rendell, President. Henry Cooke and T. B. Smith, Vice-Presidents. H. T. B. Wood, Treasurer. Joseph Crowdy, Secretary. Committee of Charity—the above officers *ex officio* and Revs. G. M. Johnson, A. C. F. Wood, M. A., F. Botwood, Hon. James S. Clift, and C. S. Pinsent, J. T. Gillard, R. H. Prowse, G. F. Bown, A. O. Hayward, C. R. Ayre, John Southcott.

St. Andrew's Society—James Baird, President. Gilbert Browning, Vice-President. Alexander Taylor, Treasurer. Robert Stott, Secretary. Committee of Charity—Charles Rankin, Robert Blackwood, David Watson.

Newfoundland British Society—Thomas Witleycombe, President. Richard Atwell, Vice-President. Charles B. Rankin, Treasurer. James Pennoek, Secretary. Committee—Daniel Cameron, Andrew Taverner, Samuel Soaper, Thomas Coffin, Edward Thomas, Henry Langston, William H. Pippy, John R. Hughes, Edward Warren.

British Society of Conception Bay—John Strathie, President. William Ford, Vice-President. R. T. Squarrey, Treasurer. William Thompson, Secretary.

Society of St. Vincent de Paul—Hon. Joseph I. Little, President. Thomas S. Dwyer, Vice-President. Charles Kickham, Assistant Vice-President. William Kitchin, Treasurer. William Doutney, Secretary.

Grand Division Sons of Temperance—J. J. Rogerson, G. W. P., Robert Vey, G. W. A., E. Braec, G. S., John R. Hughes, G. T., Rev. T. Hall, G. Ch., J. Freeman, G. Con., J. P. Adams, G. Sen.

Free St. Andrew's Total Abstinence Association—President, Rev. M. Harvey.

Total Abstinence and Benefit Society—Patrick Reardon, President. Thomas Coady, Vice-President. John Coady, First Assistant. Richard Raftus, Second Assistant. Philip Halley, First Treasurer. James Hynes, Second Treasurer. Francis Doyle, Secretary. John Carroll, First Marshal. James Bruin, Deputy Marshal.

Juvenile Total Abstinence and Benefit Society—Patrick Neale, President. P. Reardon, Secretary.

Mechanics' Society—William Rowe, President. James Callanan, Vice-President. Edward Devereaux, First Assistant. Patrick Roach, Second Assistant. John Power, First Treasurer. Michael Ellard, Second Treasurer. John Comerford, Third Treasurer. James Ryan, Secretary. Henry Shea, M.D., Physician.

Shipwrights' Benefit Society—Patrick Haliburton, President. Samuel Walsh, First Vice-President. Daniel Condon, Second Vice-President. Edward Knight, Treasurer. Jeremiah Hickey, Secretary.

Doreas Society, St. John's—Patron, His Excellency the Governor. President and Treasurer, Mrs. J. W. Smith. Secretary, Mrs. Selater. Committee, Mrs. J. W. Smith, Mrs. Reid, Mrs.

Rogerson, Mrs. Macpherson, Mrs. Milligan, Mrs. E. Smith, Mrs. D. W. Prowse, Mrs. Selater, Mrs. P. Emerson, Mrs. A. G. Smith, Mrs. Thorburn, Mrs. James Pitts. Collectors, West, Mrs. P. Emerson, Mrs. Selater; East, Mrs. E. Smith and Mrs. McNeil. Dispensers, Mrs. J. W. Smith, Mrs. Reid and Mrs. Selater.

Dorcas Society, Harbor Grace—Mrs. Betraem Jones, President.

Benevolent Irish Society, Conception Bay, Founded in 1814—John Fitzgerald, President. John Fennell, Vice-President. Patrick Walsh, First Assistant. Maurice Connell, Second Assistant. Robert Walsh, Treasurer. James Bolger, Secretary. Michael Jones, Chairman Committee of Charity. John Grubert, Chairman of Review and Correspondence.

Trinity Benefit Club, Instituted 1838—Patrick Murphy, President. Dr. White, Vice-President. W. D. Cross, Treasurer. James Collis, Secretary.

Total Abstinence and Benefit Society of Harbor Grace—A. T. Drysdale, President. D. A. Flinn, Vice-President. Nicholas Hartery, First Assistant. J. Flinn, Second Assistant. John Coady, Treasurer. David Flinn, Financial Secretary. J. J. Hartery, Secretary.

Juvenile Total Abstinence and Benefit Society of Harbor Grace—T. Hartery, President. M. J. Graham, Vice-President. John Murphy, First Assistant. M. J. Lynch, Second Assistant. Francis McQuillan, Treasurer. M. Tobin, Financial Secretary. F. Hampton, Secretary.

Appendix.

The following notifications and appointments have been made since the foregoing sheets went to press :

Members returned to serve in the General Assembly of Newfoundland :—

District of St. John's East—John J. Dearin, Robert J. Parsons, Robert J. Kent, Esquire.

District of St. John's West—Lewis Tessier, Patrick J. Scott, Maurice Fenelon, Esquires.

District of Conception Bay, Southern Division—Hon. Joseph I. Little, Patrick Nowlan, Esquire.

District of Brigus and Port-de-Grave—John Bartlett, Esquire.

District of Harbor Grace—W. O. Wood, Esquire, Hon. Frederick B. T. Carter.*

District of Carbonear—John Rorke, Esquire.

District of Bay-de-Verds—James J. Rogerson, Esquire.

* Resigned his seat, another election to take place on the 17th January, 1874.

District of Trinity Bay—John Steer, John H. Warren, William V. Whiteway, Esquires.

District of Bonavista Bay—Charles Bowring, Alexander J. W. McNeilly, John T. Burton, Esquires.

District of Twillingate and Fogo—Charles Duder, Esquire, Hon. Frederick B. T. Carter, Smith McKay, Esquire.

District of Ferryland—Hon. T. Glen, Richard Raftus, Esquire.

District of Placentia and St. Mary's—Hon. Major Renouf, James Collins, Esquire, Hon. C. F. Bennett.

District of Burin—James S. Winter, Charles R. Ayre, Esquires.

District of Fortune Bay—Thomas R. Bennett, Esquire.

District of Burgeo and LaPelle—Prescott Emerson, Esquire.

James Walsh, to be an additional Commissioner of Breakwater, at Brigus.

Mr. F. J. Tweedle, to be a member of the Rose Blanche and Harbor le Con Board of Road Commissioners.

Hon. R. J. Pinsent, Q. C., to be Solicitor General of this Colony.

Adam J. McKen, J. P., to be Stipendiary Magistrate of Great Placentia, in the room of the late F. L. Bradshaw, deceased.

Thomas P. O'Donnell, to be a Justice of the Peace of the Southern District, Stipendiary Magistrate, and Preventive Officer at St. Mary's, in the room of Adam J. McKen.

George Skelton, J. P., M. D., to be Stipendiary Magistrate at Greenspond, Bonavista Bay.

James Ryan, Bonavista, to be a Justice of the Peace for the Northern District.

Paul Carty, (Inspector of Police), to be a Member of the Board of Health, St. John's.

Revd. Frederick Murray, M. A., to be a member of the Protestant Board of Education at Twillingate, in the room of the Revd. T. Boone, resigned.

James Ryan, to be a member of the Board of Road Commissioners at Bonavista.

Harbor Lights, Newfoundland.

1872.—*Puffin Island, Greenspond*.—The Light House on this Island is built of granite. The Tower and Keeper's Dwelling are attached. The illuminating apparatus is Dioptric, of the 4th order, and a *fixed red* Light is exhibited every night from sunset to sunrise; it is 85 feet above the level of the sea, and in clear weather should be seen a distance of 12 miles. The Light

is visible from North by East, through South, to West by North by compass, and is situated in $49^{\circ} 09' 27''$ North Latitude, and $53^{\circ} 52' 27''$ West Longitude. Robert K. Oakley, Keeper.

No. 1, 1873.—*Belloram, Fortune Bay.*—A fixed white Light is exhibited nightly at this place from sunset to sunrise, at an elevation of 35 feet above the level of the sea, which in clear weather should be visible seven miles. The building is a wooden Tower, painted white, and is situated in Latitude $47^{\circ} 29' 00''$ North, and $55^{\circ} 27' 15''$ West Longitude. The apparatus is Dioptric of the 8th order, with a single argand burner, and illuminates an arc of the horizon of 270° . In entering the harbor the Light must be kept on the Port hand. Samuel Clewett, Sr., Keeper.

No 2, 1873.—*Rose Blanche Point.*—This Light House is built of granite, upon the Eastern head. The Tower and Keeper's Dwelling are attached. The illuminating apparatus is Dioptric, of the 4th order, and a fixed white Light will be exhibited on and after January 1st, 1874, from sunset to sunrise, at an elevation of ninety-five feet above the level of the sea, and it should be seen in clear weather for 13 miles. The Light illuminates the horizon from East by South, through South, to West by compass, and is situated in Latitude $47^{\circ} 57' 4''$ North, and $58^{\circ} 41' 2''$ West Longitude. Long Island Black Rock bears West from the Light, and distant about one mile. Rose Blanche shoals W. S. W. half a mile, and Petites Black rock E. by S. three miles. Keeper, John A. Roberts.

No 3, 1873.—*Port Point, Trinity.*—On and after 1st January, 1874, a fixed white Light will be exhibited nightly from sunset to sunrise at this place upon a wooden Tower painted white, and at a height of 71 feet above the level of the sea, and it should be visible in clear weather for eleven miles. The erection is situated in Latitude $48^{\circ} 21' 55''$ North Latitude, and $53^{\circ} 29' 51''$ West Longitude. The apparatus is Dioptric of the 8th order, with a single argand burner, and illuminates an arc of the horizon of 220° degrees. In entering the harbour the Light must be kept on the Port hand. Keeper, William Rowe.

Cape Race Steam Fog Alarm.

A powerful Steam Whistle has been placed on Cape Race, about 250 feet South of the Light House, which is sounded during thick and foggy weather, or snow storms, for ten seconds, with intervals of silence of fifty seconds in each minute. The Whistle will probably be heard in calm weather 20 miles, with the wind 30 miles, and in stormy weather against the wind from seven to ten miles.

Contents.

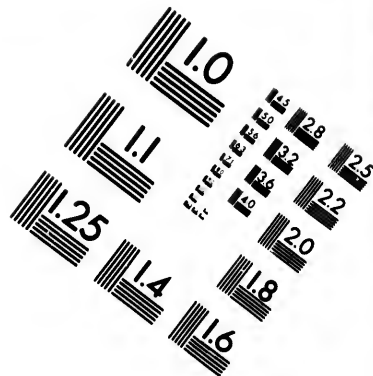
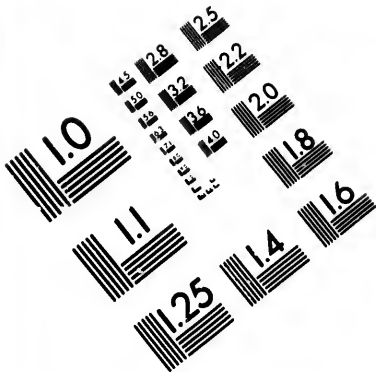
Advertisements	27
Board of Works Department	27
Boards of Road Commissioners (Outports)	62
Board of Health and Health Wardens	61
Banks—Savings' Bank	73
Union Bank of Newfoundland	73
Commercial Bank of Newfoundland	73
Barristers and Attorneys, Supreme Court	58
Barristers and Attorneys, Northern District	58
Benevolent Institutions, Charitable Societies, &c.	83
Calendar Pages—Moon's Phases, Sun's Rising and Setting at St. John's every day in the year, Sun's Declina- tion, Equation of Time, High Water at St. John's every morning and afternoon, Moon's Rising, Memoranda, Meteorological Table, Tide Table, &c. 5—21	5—21
Colonial Secretary's Office	25
Court Houses and Keepers	32
Commissioners for Erection of Public Wharves	32
Commissioners for Erection of Breakwaters	32
Court of Civil and Criminal Jurisdiction for Labrador	58
Commissioners of Wrecked Property	57
Commissioners of Pilots	57
Commissioners of Affidavits, &c., in S. and C. Courts	59
Colonial and Continental Church Society	64
Chamber of Commerce, (St. John's)	73
Difference of Time at various places on the Globe as com- pared with St. John's	4
Departmental Officers of the Government	25
District Surgeons	32
Eclipses for the year 1874	2
Executive Council	24
Educational Institutions, Protestant and Roman Catholic Education Boards, &c.	63
Ecclesiastical Department, &c., &c.	68
Fixed and Moveable Festivals, Anniversaries, &c.	4
Financial Secretary's Office	25
Foreign Consuls	73
Governor, Commander-in-Chief, and Vice-Admiral of Newfoundland	24

Gaols and
 Her Majesty's
 House of
 Inspectors
 Insurance
 Judicial
 Joint Stock
 Legislative
 Light House
 Medical
 Masonic
 Medical
 Newfoundland
 Newfoundland
 Naval
 Notaries
 Newspapers
 Newfoundland
 Planets
 Post Office
 Police
 Queen's
 Royal Family
 Revenue
 Surveyors
 Superintending
 St. John's
 St. John's
 St. John's
 Stipends
 St. John's
 St. John's
 St. John's
 St. Joseph
 Treasurers
 Vice-Admiral
 Wesleyan
 Wesleyan

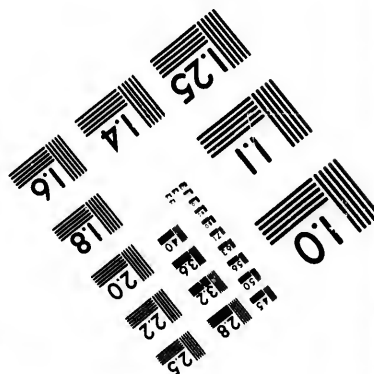
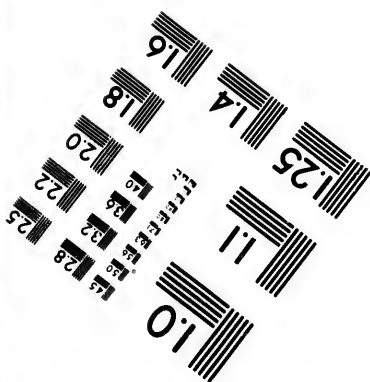
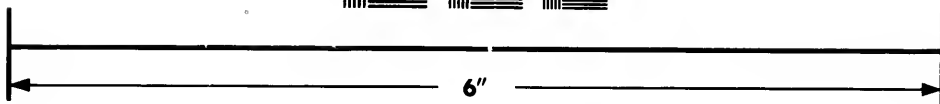
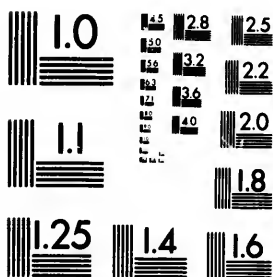
27
 27
 62
 61
 73
 73
 58
 58
 83
 5-21
 25
 32
 32
 32
 58
 57
 57
 59
 64
 73
 4
 25
 32
 2
 24
 63
 68
 4
 25
 73
 24

Gaols and Gaolers	81
Her Majesty's Chief Officers of State	23
House of Assembly	25
Inspectors of Weights and Measures	61
Insurance Companies—Fire, Life and Marine	80
Judicial Department, comprising Lists of Barristers and Attorneys of Supreme Court, Stipendiary Magis- trates, Justices of the Peace, &c., &c.	57
Joint Stock Companies, Public Societies, &c.	82
Legislative Council	24
Light Houses and Lights	33
Medical Officers for Sick Seamen (Port of St. John's)	62
Masonic Lodges	75
Medical Society of St. John's	77
Newfoundland Wesleyan Academy	63
Newfoundland Church Society	69
Naval Establishment	74
Notaries Public	62
Newspapers Published in the Colony	74
Newfoundland Tariff	77
Planetary Notices—Solar System	2
Post Office Department, including Postal Routes, Rates of Postage, and Post Office Directory for New'fd. 36—57	
Police	61
Queen's Printer	63
Royal Family of England	22
Revenue Establishment, &c., &c.	25
Surveyor General's Department	26
Superintendent of Mercantile Marine	26
St. John's Hospital	32
St. John's Poor House	32
St. John's Lunatic Asylum	32
Stipendiary Magistrates	59
St. John's Academy	63
St. John's Athenæum	74
St. John's and Newfoundland Bible Society	72
St. Joseph's Catholic Institute	75
Treasury Department	26
Vice-Admiralty Court	58
Wesleyan School and Agency Society	64
Wesleyan Academic Literary Institute	75



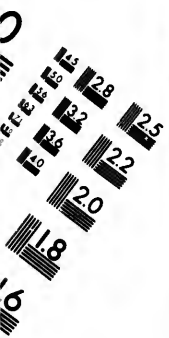


**IMAGE EVALUATION
TEST TARGET (MT-3)**

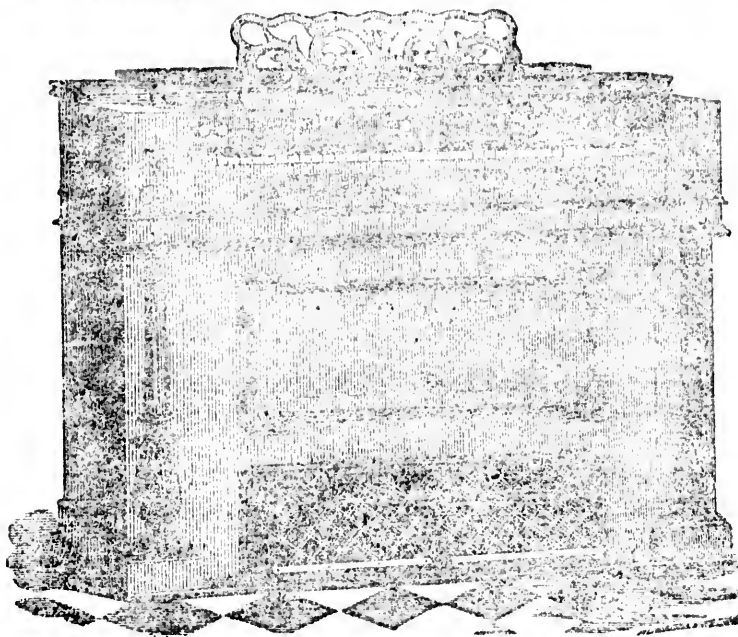


**Photographic
Sciences
Corporation**

23 WEST MAIN STREET
WEBSTER, N.Y. 14580
(716) 872-4503



CABINET ORGANS.



Celebrated Mason & Hamlin CABINET ORGANS.

These Instruments have been proved to be the
"Best of their Class" Manufactured in
any part of the world.

1st—By universal satisfaction of parties who have purchased and used them.

2nd—By "Seventy-five Gold and Silver Medals," received at important Industrial Exhibitions in America.

3rd—By the First Prize Medal awarded at the Paris Exposition, 1867.

4th—By the published Testimonials of the most eminent musicians in Europe and America.

5th—By the immense demand from various countries, which a supply, exceeding *one hundred per week*, cannot keep pace with.

An assortment of these Instruments may be seen at No. 3, Water Street. *Inspection respectfully solicited.*

H. J. B. WOODS, Agent.

