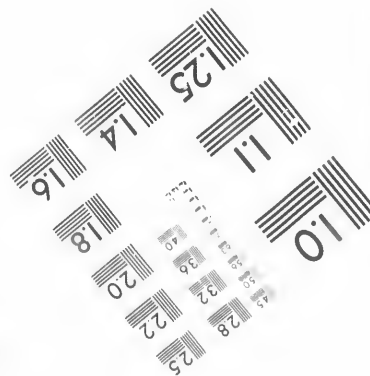
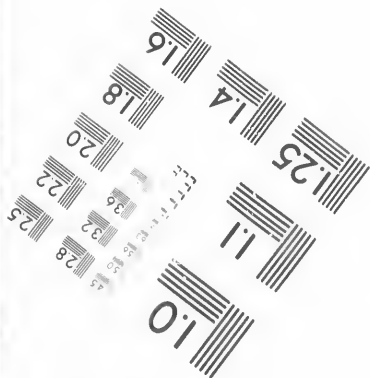
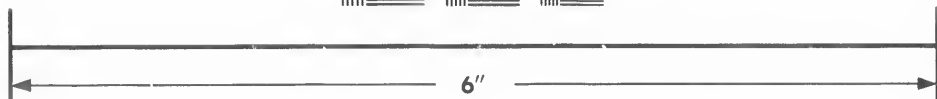
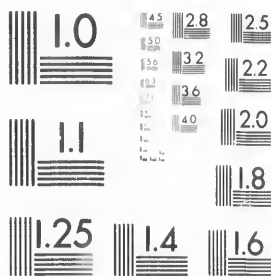


**IMAGE EVALUATION
TEST TARGET (MT-3)**



**Photographic
Sciences
Corporation**

23 WEST MAIN STREET
WEBSTER, N. Y. 14580
(716) 872-4503

**CIHM/ICMH
Microfiche
Series.**

**CIHM/ICMH
Collection de
microfiches.**



Canadian Institute for Historical Microreproductions / Institut canadien de microreproductions historiques

© 1987

Technical and Bibliographic Notes/Notes techniques et bibliographiques

The Institute has attempted to obtain the best original copy available for filming. Features of this copy which may be bibliographically unique, which may alter any of the images in the reproduction, or which may significantly change the usual method of filming, are checked below.

L'Institut a microfilmé le meilleur exemplaire qu'il lui a été possible de se procurer. Les détails de cet exemplaire qui sont peut-être uniques du point de vue bibliographique, qui peuvent modifier une image reproduite, ou qui peuvent exiger une modification dans la méthode normale de filmage sont indiqués ci-dessous.

- | | |
|--|--|
| <input type="checkbox"/> Coloured covers/
Couverture de couleur | <input checked="" type="checkbox"/> Coloured pages/
Pages de couleur |
| <input type="checkbox"/> Covers damaged/
Couverture endommagée | <input type="checkbox"/> Pages damaged/
Pages endommagées |
| <input type="checkbox"/> Covers restored and/or laminated/
Couverture restaurée et/ou pelliculée | <input type="checkbox"/> Pages restored and/or laminated/
Pages restaurées et/ou pelliculées |
| <input type="checkbox"/> Cover title missing/
Le titre de couverture manque | <input type="checkbox"/> Pages discoloured, stained or foxed/
Pages décolorées, tachetées ou piquées |
| <input type="checkbox"/> Coloured maps/
Cartes géographiques en couleur | <input type="checkbox"/> Pages detached/
Pages détachées |
| <input type="checkbox"/> Coloured ink (i.e. other than blue or black)/
Encre de couleur (i.e. autre que bleue ou noire) | <input type="checkbox"/> Showthrough/
Transparence |
| <input type="checkbox"/> Coloured plates and/or illustrations/
Planches et/ou illustrations en couleur | <input type="checkbox"/> Quality of print varies/
Qualité inégale de l'impression |
| <input checked="" type="checkbox"/> Bound with other material/
Relié avec d'autres documents | <input type="checkbox"/> Includes supplementary material/
Comprend du matériel supplémentaire |
| <input type="checkbox"/> Tight binding may cause shadows or distortion
along interior margin/
Lare liure serrée peut causer de l'ombre ou de la
distorsion le long de la marge intérieure | <input type="checkbox"/> Only edition available/
Seule édition disponible |
| <input type="checkbox"/> Blank leaves added during restoration may
appear within the text. Whenever possible, these
have been omitted from filming/
Il se peut que certaines pages blanches ajoutées
lors d'une restauration apparaissent dans le texte,
mais, lorsque cela était possible, ces pages n'ont
pas été filmées. | <input type="checkbox"/> Pages wholly or partially obscured by errata
slips, tissues, etc., have been refilmed to
ensure the best possible image/
Les pages totalement ou partiellement
obscurcies par un feuillet d'errata, une pelure,
etc., ont été filmées à nouveau de façon à
obtenir la meilleure image possible. |
| <input checked="" type="checkbox"/> Additional comments:/ [Printed ephemera] [4] p.
Commentaires supplémentaires: | |

This item is filmed at the reduction ratio checked below/
Ce document est filmé au taux de réduction indiqué ci-dessous.

10X	14X	18X	22X	26X	30X
<input type="checkbox"/>	<input type="checkbox"/>	<input type="checkbox"/>	<input checked="" type="checkbox"/>	<input type="checkbox"/>	<input type="checkbox"/>
12X	16X	20X	24X	28X	32X

The copy filmed here has been reproduced thanks to the generosity of:

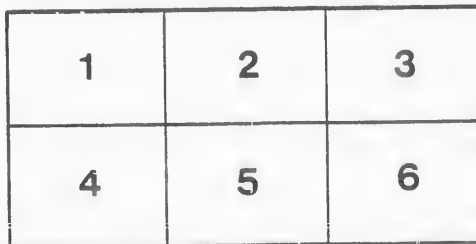
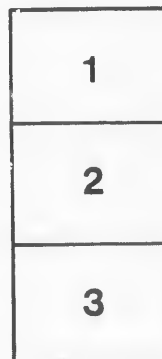
D. B. Weldon Library
University of Western Ontario
(Regional History Room)

The images appearing here are the best quality possible considering the condition and legibility of the original copy and in keeping with the filming contract specifications.

Original copies in printed paper covers are filmed beginning with the front cover and ending on the last page with a printed or illustrated impression, or the back cover when appropriate. All other original copies are filmed beginning on the first page with a printed or illustrated impression, and ending on the last page with a printed or illustrated impression.

The last recorded frame on each microfiche shall contain the symbol \rightarrow (meaning "CONTINUED"), or the symbol ∇ (meaning "END"), whichever applies.

Maps, plates, charts, etc., may be filmed at different reduction ratios. Those too large to be entirely included in one exposure are filmed beginning in the upper left hand corner, left to right and top to bottom, as many frames as required. The following diagrams illustrate the method:



L'exemplaire filmé fut reproduit grâce à la générosité de:

D. B. Weldon Library
University of Western Ontario
(Regional History Room)

Les images suivantes ont été reproduites avec le plus grand soin, compte tenu de la condition et de la netteté de l'exemplaire filmé, et en conformité avec les conditions du contrat de filmage.

Les exemplaires originaux dont la couverture en papier est imprimée sont filmés en commençant par le premier plat et en terminant soit par la dernière page qui comporte une empreinte d'impression ou d'illustration, soit par le second plat, selon le cas. Tous les autres exemplaires originaux sont filmés en commençant par la première page qui comporte une empreinte d'impression ou d'illustration et en terminant par la dernière page qui comporte une telle empreinte.

Un des symboles suivants apparaîtra sur la dernière image de chaque microfiche, selon le cas: le symbole \rightarrow signifie "A SUIVRE", le symbole ∇ signifie "FIN".

Les cartes, planches, tableaux, etc., peuvent être filmés à des taux de réduction différents. Lorsque le document est trop grand pour être reproduit en un seul cliché, il est filmé à partir de l'angle supérieur gauche, de gauche à droite, et de haut en bas, en prenant le nombre d'images nécessaire. Les diagrammes suivants illustrent la méthode.



Q



M

M

3

SEATS





MR. GEORGE BELFORD

THE EMINENT ENGLISH ELOCUTIONIST,

WILL GIVE TWO

Numerous & Dramatic

RECITALS

IN

VICTORIA HALL, LONDON,

ON THE EVENINGS OF

Monday & Tuesday, May 10 & 11

COMMENCING AT EIGHT O'CLOCK.

Miss Edwell, R.A.M., and Miss Freeland

HAVE KINDLY CONSENTED TO GIVE SELECTIONS OF VOCAL AND INSTRUMENTAL MUSIC.

Tickets, 50 and 25 Cents

At E. A. Taylor's Book Store, and at all the Music Stores.

SEATS CAN BE RESERVED FREE OF CHARGE AT CILLEAN'S JEWELRY STORE, RICHMOND STREET.



ADVERTISER

MONDAY EVENING, MAY 10.

Programme.

PART I.

- "KING ROBERT OF SICILY," *Long fellow*
(*L'eposit potentes de sede et exaltavit humiles.*)
- "BOOTS AT THE HOLLOW-TREE INN," *Dickens*
- SONG,— "SING, SLEEP, SLUMBER," *Gounod*
- MISS FREELAND.
- "WITH MIDDLETON AT BATOCHÉ," *Parker*
- "MY FIRST AND LAST APPARANCE ON ANY STAGE," (By Request) . *Turner*
(The story of an unhappy amateur told by himself.)

PART II.

- "THE REVENGE," *Tennyson*
(A Ballad of the Fleet.)
- "LORD DUNDREARY RECEIVES A LETTER,"
(Adapted from the Comedy of 'Our American Cousin.') _____
- SONG,—Selected _____
- MISS FREELAND.
- "THE FALL OF THE PEMBERTON MILL," *E. Stuart Phelps*
- "RUBINSIEIN'S PIANO AND WHAT HE DID WITH IT," (By Request) . *Adams*

SEE PRESS NO ON I

10. TUESDAY EVENING, MAY 11.

Programme.

PART I.

PIANO SOLO,—	MISS ELWELL.	—
"RICHARD III," Act I, Sc. IV, (The Dream of Clarence.)		<i>Shakespeare</i>
"SHAMUS O'BRIEN," (By Request) (A Tale of the Irish Rebellion.)		<i>Le Fanu</i>
SONG,— "LOVE'S OLD SWEET SONG,"		<i>Molloy</i>
	MISS ELWELL.	
"MY LITTLE GIRL,"		<i>Hartwell</i>
"THE RIVALS," Act I, Sc. II, (Scene between Sir Anthony and Captain Absolute.)		<i>Sheridan</i>

PART II.

"THE SETTLER'S STORY,"		<i>Will Carleton</i>
SONG,— "ALPINE ROSE,"		<i>Siebiar</i>
	MISS ELWELL.	
"THE NORTHERN FARMER,"		<i>Tennyson</i>
SONG,— "SUNSHINE AND RAIN,"		<i>Blumenthal</i>
	MISS ELWELL.	
"THE MIDNIGHT CHARGE AT KASSASSIN," (By Request.)		<i>Clement Scott</i>
"THE HAT,"		<i>Translated from the French</i>
	(Recited by M. Coquelin of the COMEDIE FRANCAIS.)	

S NO ON NEXT PAGE.

◁ OPINIONS OF THE PRESS. ▷

The following are a few extracts from the more recent of the numerous lengthy criticisms and articles on Mr. Belford's performances in public.

THE LONDON (ONT.) FREE PRESS said of Mr. Belford's last Recital here a year ago:—"Mr. Belford fairly took the audience by storm. Few were prepared to discover the towering dramatic ability and elocutionary accomplishments which he displayed last night for the first time here. His power of recital is, in one word, grand. He seemed to hold his audience spell-bound by the combination of great magnetic force, perfect and graceful action, and masterly articulation. He never refers to a book, but seems to have studied his parts like a thorough actor, presenting them to the audience as finished works of the most conscientious elocutionary art. Nothing so good of the kind has been heard here for many a year."

TORONTO MAIL:—"Mr. George Belford, of London, England, who has a reputation on the other side of the Atlantic of being an elocutionist of considerable merit, appeared for the first time last evening before a Toronto audience. For three hours Mr. Belford entertained the audience entirely unassisted, at one time holding them spell-bound by vivid narration, and at another convulsing them with laughter by his droll recitations or clever mimicry. Every number on the programme was equally well rendered, and each time Mr. Belford re-appeared he was given a hearty reception."

MONTREAL GAZETTE:—"Mr. Belford more than pleased the large and select audience who assembled here to greet his first appearance. His accent and enunciation are unadulterated; his gesticulation is perfect, and his mannerism is, above all, easy and graceful. He is an accomplished elocutionist, and to see him is to learn a lesson in the art."

OTTAWA CITIZEN:—"Mr. George Belford gave the first of his two humorous and dramatic recitals in the Grand Opera House last night, under the distinguished patronage of His Excellency the Governor-General. Notwithstanding the numerous other attractions there was a large attendance, and the efforts of the celebrated English elocutionist were greatly admired. Mr. Belford's splendid elocutionary style and excellent stage presence make it a pleasure to listen to him, and the audience of last night were not chary in testifying their approbation. To a voice capable of great modulation Mr. Belford adds a thorough knowledge of the art of which he is so clever an exponent. He has a genuine sense of humor and a strong perception of the pathetic, large dramatic ability, and a wonderful capacity for interpreting the tragic, so that during an evening's entertainment he is enabled to appeal to varied tastes, and to excite varied emotions. As an entertainer he stands in the first rank, and of his talents it is almost impossible to say too much."

TORONTO GLOBE:—"Mr. Belford is tall, with fair hair, an English cast of features, and a very refined manner. He uses no books or notes, but recites entirely from memory. He has a voice of considerable power, which he uses with discretion, and his action is particularly graceful."

HAMILTON SPECTATOR:—"The Midnight Charge at Kassassin' was recited in a style so full of fire and dramatic intensity that the audience was thrilled by its stirring lines."

BELLEVILLE INTELLIGENCER:—"The scene from Richard III. in which the unhappy Duke of Clarence relates his terrible dream, kept his audience spell-bound."

COBOURG WORLD:—"It is doubtful if any elocutionist ever furnished two such charming literary evenings to a Cobourg audience as did Mr. George Belford on Tuesday and Wednesday of this week. He is an accomplished English gentleman, possessing a voice of remarkable flexibility and silvery richness of tone. All his selections were enthusiastically received. His return at an early date will be heartily welcomed by all who had the privilege of hearing him."

OTTAWA FREE PRESS:—"Mr. Belford is an accomplished speaker; he possesses a powerful, pleasing, and well trained voice, combined with great facial flexibility. He keeps the audience thoroughly *en rapport* with himself, and carries them from grave to gay, from the burlesque to the pathetic, in a way which probably no other elocutionist could accomplish."

THIS IS MR. BELFORD'S LAST APPEARANCE IN LONDON PRIOR TO DEPARTURE FOR ENGLAND.

ous

year
ed to
h he
word,
great
never
sent
inary

as a
rable
three
ding
er by
ually
ion."
fect
ncia
e all,
arn a

orous
shed
erous
Eng-
style
ce of
great
is so
on of
g the
ried
rank,

of fe-
tively
ction,

ecited
by its

h the
and.

such
rd on
eman,
ll his
artily

e pos-
flexi-
them
ly no

