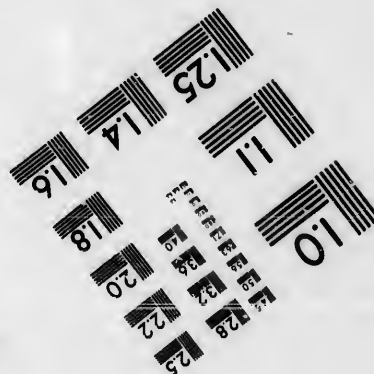
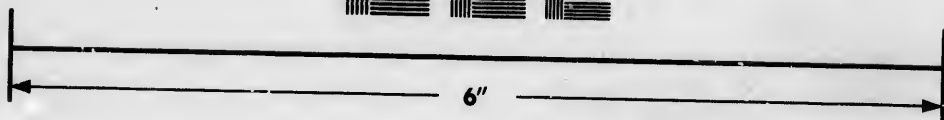
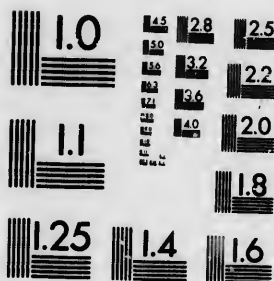


**IMAGE EVALUATION  
TEST TARGET (MT-3)**



**Photographic  
Sciences  
Corporation**

23 WEST MAIN STREET  
WEBSTER, N.Y. 14580  
(716) 872-4503

10  
16  
18  
20  
22  
25  
28  
32  
36

**CIHM/ICMH  
Microfiche  
Series.**

**CIHM/ICMH  
Collection de  
microfiches.**



Canadian Institute for Historical Microreproductions / Institut canadien de microreproductions historiques

10  
16  
18  
20  
22  
25  
28  
32  
36

**© 1986**

Technical and Bibliographic Notes/Notes techniques et bibliographiques

The Institute has attempted to obtain the best original copy available for filming. Features of this copy which may be bibliographically unique, which may alter any of the images in the reproduction, or which may significantly change the usual method of filming, are checked below.

L'institut a microfilmé le meilleur exemplaire qu'il lui a été possible de se procurer. Les détails de cet exemplaire qui sont peut-être uniques du point de vue bibliographique, qui peuvent modifier une image reproduite, ou qui peuvent exiger une modification dans la méthode normale de filmage sont indiqués ci-dessous.

- |  |  |
|--|--|
| <input type="checkbox"/> Coloured covers/<br>Couverture de couleur   | <input type="checkbox"/> Coloured pages/<br>Pages de couleur   |
| <input type="checkbox"/> Covers damaged/<br>Couverture endommagée  | <input type="checkbox"/> Pages damaged/<br>Pages endommagées   |
| <input type="checkbox"/> Covers restored and/or laminated/<br>Couverture restaurée et/ou pelliculée  | <input type="checkbox"/> Pages restored and/or laminated/<br>Pages restaurées et/ou pelliculées  |
| <input type="checkbox"/> Cover title missing/<br>Le titre de couverture manque   | <input checked="" type="checkbox"/> Pages discoloured, stained or foxed/<br>Pages décolorées, tachetées ou piquées   |
| <input type="checkbox"/> Coloured maps/<br>Cartes géographiques en couleur   | <input type="checkbox"/> Pages detached/<br>Pages détachées  |
| <input type="checkbox"/> Coloured ink (i.e. other than blue or black)/<br>Encre de couleur (i.e. autre que bleue ou noire)   | <input checked="" type="checkbox"/> Showthrough/<br>Transparence   |
| <input type="checkbox"/> Coloured plates and/or illustrations/<br>Planches et/ou illustrations en couleur  | <input type="checkbox"/> Quality of print varies/<br>Qualité inégale de l'impression   |
| <input type="checkbox"/> Bound with other material/<br>Relié avec d'autres documents   | <input type="checkbox"/> Includes supplementary material/<br>Comprend du matériel supplémentaire   |
| <input type="checkbox"/> Tight binding may cause shadows or distortion<br>along interior margin/<br>Lare liure serrée peut causer de l'ombre ou de la<br>distorsion le long de la marge intérieure   | <input type="checkbox"/> Only edition available/<br>Seule édition disponible   |
| <input type="checkbox"/> Blank leaves added during restoration may<br>appear within the text. Whenever possible, these<br>have been omitted from filming/<br>Il se peut que certaines pages blanches ajoutées<br>lors d'une restauration apparaissent dans le texte,<br>mais, lorsque cela était possible, ces pages n'ont<br>pas été filmées. | <input type="checkbox"/> Pages wholly or partially obscured by errata<br>slips, tissues, etc., have been refilmed to<br>ensure the best possible image/<br>Les pages totalement ou partiellement<br>obscurcies par un feuillet d'errata, une pelure,<br>etc., ont été filmées à nouveau de façon à<br>obtenir la meilleure image possible. |
| <input checked="" type="checkbox"/> Additional comments:/<br>Commentaires supplémentaires:   | [Printed ephemera] 1 sheet (verso blank)   |

This item is filmed at the reduction ratio checked below/  
Ce document est filmé au taux de réduction indiqué ci-dessous.

10X	12X	14X	16X	18X	20X	22X	24X	26X	28X	30X	32X
						✓					

The copy filmed here has been reproduced thanks to the generosity of:

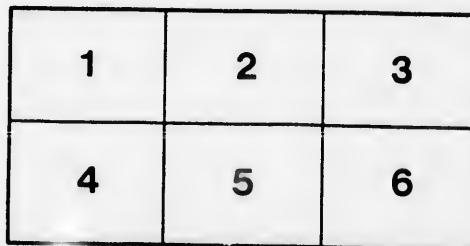
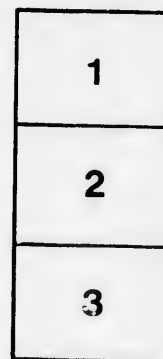
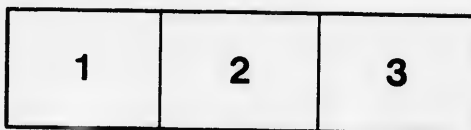
Seminary of Quebec  
Library

The images appearing here are the best quality possible considering the condition and legibility of the original copy and in keeping with the filming contract specifications.

Original copies in printed paper covers are filmed beginning with the front cover and ending on the last page with a printed or illustrated impression, or the back cover when appropriate. All other original copies are filmed beginning on the first page with a printed or illustrated impression, and ending on the last page with a printed or illustrated impression.

The last recorded frame on each microfiche shell contains the symbol  $\rightarrow$  (meaning "CONTINUED"), or the symbol  $\nabla$  (meaning "END"), whichever applies.

Maps, plates, charts, etc., may be filmed at different reduction ratios. Those too large to be entirely included in one exposure are filmed beginning in the upper left hand corner, left to right and top to bottom, as many frames as required. The following diagrams illustrate the method:



L'exemplaire filmé fut reproduit grâce à la générosité de:

Séminaire de Québec  
Bibliothèque

Les images suivantes ont été reproduites avec le plus grand soin, compte tenu de la condition et de la netteté de l'exemplaire filmé, et en conformité avec les conditions du contrat de filmage.

Les exemplaires originaux dont la couverture en papier est imprimée sont filmés en commençant par le premier plat et en terminant soit par la dernière page qui comporte une empreinte d'impression ou d'illustration, soit par le second plat, selon le cas. Tous les autres exemplaires originaux sont filmés en commençant par la première page qui comporte une empreinte d'impression ou d'illustration et en terminant par la dernière page qui comporte une telle empreinte.

Un des symboles suivants apparaît sur la dernière image de chaque microfiche, selon le cas: le symbole  $\rightarrow$  signifie "A SUIVRE", le symbole  $\nabla$  signifie "FIN".

Les cartes, planches, tableaux, etc., peuvent être filmés à des taux de réduction différents. Lorsque le document est trop grand pour être reproduit en un seul cliché, il est filmé à partir de l'angle supérieur gauche, de gauche à droite, et de haut en bas, en prenant le nombre d'images nécessaire. Les diagrammes suivants illustrent la méthode.

ire  
détails  
es du  
modifier  
er une  
filmage

es

errata  
to

pelure,  
n à

32X

## AT ST. MICHAEL'S PRO-CATHEDRAL.

After the Gospel, at the Bishop's Mass, last Sunday, Jan. 16, 1898, he made the following brief announcement:—

A few days ago the Pope's Encyclical in the original Latin, on the Manitoba School Question came to us in the usual way, through our Most Rev. Metropolitan, the Archbishop of Halifax, to whom ordinarily such official documents are sent from Rome, to be re-distributed by him to the various suffragan bishops of his ecclesiastical province. In the Archbishop's letter dated: Archbishop's House, Halifax, Jan. 10, 1898, is stated: "My Dear Lord—I am sending you a copy of the Pope's Encyclical which reached here only on Saturday, and of which I am preparing an English translation. Should you desire copies of the English translation for your clergy, please let me know by telegraph how many you would require.

"In conjunction with this matter I may say that when in Montreal last week a form of letter of promulgation was agreed upon by several of the Archbishops. Possibly, you may have received a communication from Mgr. Begin on this question. I may say that as he was obliged by an order from Rome to promulgate the Encyclical at once, we agreed that he should publish at the same time the Pastoral alluded to, and that we in promulgating the Encyclical in our diocese would adopt that letter as our own. Should your Lordship feel inclined to do likewise, you can obtain from Mgr. Begin as many copies as you may require both in French and English.

\* \* \* C. O'Brien, Abp. of Halifax,"

Similar letters have come from Abp. Begin of Quebec and Abp. Bruchesi of Montreal.

In conformity and unity with our venerated Archbishop and the other Bishops we adopt the same plan; and, therefore, to-day at the end of this Mass will be read by one of the Rev. Fathers, at the usual time for making the announcements, the said pastoral letter of promulgation; and at the High Mass will be read the said Papal Encyclical itself. This was done accordingly.

During the week when the packages telegraphed for, arrive from Halifax and Quebec, copies will be duly forwarded to the priests throughout the Diocese to be read in their respective churches next Sunday.

This is not in the spirit of political partyism but in the spirit of obedience to the Supreme Visible Head of the Church, whose infallible pronouncements in matters of faith and morals—of religious truths, not mere worldly or secular opinions which may vary or differ—are protected from error by Him who commands us to hear and obey. Christ says: "Suffer little children to come unto me, and forbid them not"—by a mere secular or neutral education, preventing them from growing up in the habits of practicing and learning their duty to God, to themselves, and to their fellow men. "He that shall scandalize one of these little ones that believe in Me, it were better for him that a millstone should be hanged about his neck and that he should be drowned in the depth of the sea." [Matt. XVIII.]

But to those who teach correctly, in the spirit of "faith that worketh by charity" a great reward is held out: "Whatever you do to the least of these is done to Me" says our Lord in the Gospel; and the Holy Ghost proclaims the reward of this duty: "They who instruct many to justice shall shine as the stars for all eternity." [Daniel XII. 3.]

REV. DEAR SIR: On the first Sunday after the receipt of this, please read the accompanying Encyclical and Pastoral in the vernacular language, without further comment, for your flock at the parish mass.

Praying God to bless you all, and to preserve all in peace and unity in His service.

I remain, Rev. and dear Sir, faithfully your humble and devoted servant in J. C.

† JAMES ROGERS, Bp. of Chatham.

Given at Chatham, on this 18th day of January, Feast of St. Peter's Chair at Rome, 1898.

