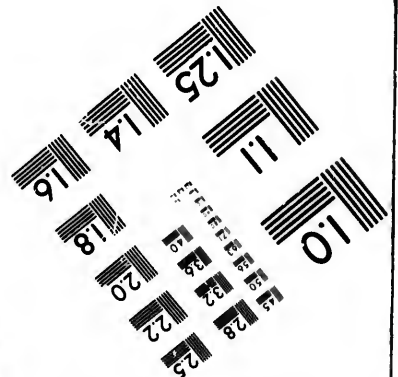
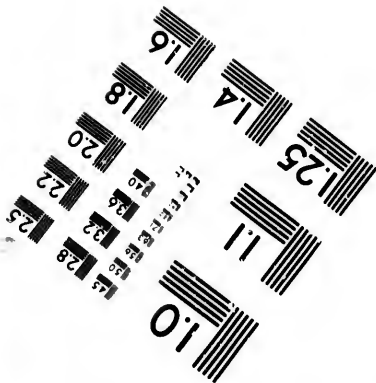
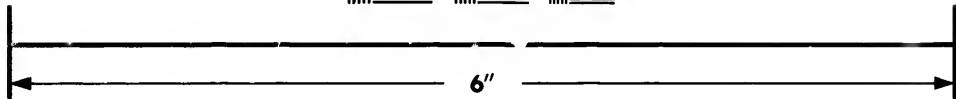
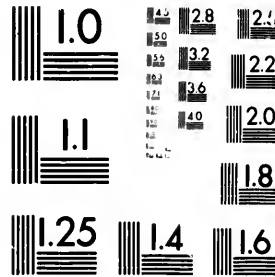


**IMAGE EVALUATION
TEST TARGET (MT-3)**



**Photographic
Sciences
Corporation**

23 WEST MAIN STREET
WEBSTER, N.Y. 14580
(716) 872-4503

**CIHM/ICMH
Microfiche
Series.**

**CIHM/ICMH
Collection de
microfiches.**



Canadian institute for Historical Microreproductions / Institut canadien de microreproductions historiques

© 1982

The copy filmed here has been reproduced thanks to the generosity of:

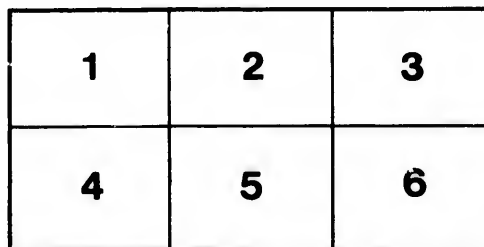
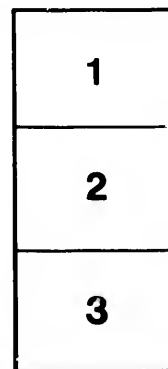
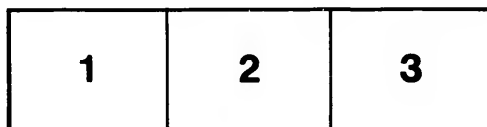
Metropolitan Toronto Library
Canadian History Department

The images appearing here are the best quality possible considering the condition and legibility of the original copy and in keeping with the filming contract specifications.

Original copies in printed paper covers are filmed beginning with the front cover and ending on the last page with a printed or illustrated impression, or the back cover when appropriate. All other original copies are filmed beginning on the first page with a printed or illustrated impression, and ending on the last page with a printed or illustrated impression.

The last recorded frame on each microfiche shall contain the symbol \rightarrow (meaning "CONTINUED"), or the symbol ∇ (meaning "END"), whichever applies.

Maps, plates, charts, etc., may be filmed at different reduction ratios. Those too large to be entirely included in one exposure are filmed beginning in the upper left hand corner, left to right and top to bottom, as many frames as required. The following diagrams illustrate the method:



L'exemplaire filmé fut reproduit grâce à la générosité de:

Metropolitan Toronto Library
Canadian History Department

Les images suivantes ont été reproduites avec le plus grand soin, compte tenu de la condition et de la netteté de l'exemplaire filmé, et en conformité avec les conditions du contrat de filmage.

Les exemplaires originaux dont la couverture en papier est imprimée sont filmés en commençant par le premier plat et en terminant soit par la dernière page qui comporte une empreinte d'impression ou d'illustration, soit par le second plat, selon le cas. Tous les autres exemplaires originaux sont filmés en commençant par la première page qui comporte une empreinte d'impression ou d'illustration et en terminant par la dernière page qui comporte une telle empreinte.

Un des symboles suivants apparaîtra sur la dernière image de chaque microfiche, selon le cas: le symbole \rightarrow signifie "A SUIVRE", le symbole ∇ signifie "FIN".

Les cartes, planches, tableaux, etc., peuvent être filmés à des taux de réduction différents. Lorsque le document est trop grand pour être reproduit en un seul cliché, il est filmé à partir de l'angle supérieur gauche, de gauche à droite, et de haut en bas, en prenant le nombre d'images nécessaire. Les diagrammes suivants illustrent la méthode.

rrata
co

pelure,
n à

TORONTO INDUSTRIAL EXHIBITION

ELLIOT & CO.,

No. 3 Front St. East, Toronto,

EXHIBIT IN CLASS 79 AS SAMPLES, AND NOT FOR COMPETITION,
THE FOLLOWING

LINSEED

AND ITS PRODUCTS, VIZ.:

GROUND LINSEED.

OIL CAKE.

CRUSHED OIL CAKE.

GROUND OIL CAKE.

LINSEED MEAL.

RAW LINSEED OIL.

REFINED LINSEED OIL.

PALE BOILED LINSEED OIL.

FLAXSEED has been cultivated in Ontario for many years, and in constantly increasing quantities until three years ago, when a difficulty of finding a profitable market for the fibre gave a temporary check to production. The crop employs laborers in large numbers in every stage, and saves an outlay for foreign goods and it is encouraging to know that production is reviving.

The whole seed is used to some extent in medicine and the arts, and formerly what was known as Linseed Meal was the seed simply ground, as shown in Division No. 2, of our Case. It is still called for to a limited extent, and when ordered as "Ground Linseed" we supply a perfectly pure article.

This sheet is intended principally for the use of farmers who are probably quite well aware of the method of cultivating Flaxseed. It may be proper, however, to say that when cultivated for seed alone it should be thin sown, say about six pecks to the acre; while, if the fibre is the main object, eight or ten pecks is the proper quantity. The demand for the seed is practically unlimited, Great Britain imported last year over ten millions of bushels, which is rather below the average.

The local market has never yet been fully supplied, and the price at any railway station in Ontario has hardly ever been below \$1.00 per bushel.

When the Linseed goes into our Mill on Beverley Street it is first screened to free it from sand, foul and immature seed. If properly turned out by the farmer or the Scutching Mill, this should cause little loss, but sometimes as much as seven per cent. of rubbish is taken out in the operation; next the seed passes through iron rollers which crush and tear it into coarse meal, from thence it passes to the mullers, which are blocks of stone eight feet in diameter and two feet thick, revolving on edge, by which the seed is reduced to powder as in the sample of "Ground Linseed."

It is now heated in a kettle by means of steam, thoroughly cooking the meal, which makes the oil-cake more nutritious and the oil to be more easily separated.

From the kettle the hot meal is placed in hair mats or bags, and then subjected to a pressure of about two and a half tons to the square inch. The oil is by this means thoroughly squeezed out, and the oil-cakes left in the shape shown in Division No. 3.

The cakes are sold for feeding purposes, either whole or as "Crushed or Ground Oil-cake," as shown in Nos. 4 and 5.

The enormous quantity of Linseed imported into Great Britain has been mentioned, but in addition, about 230,000 tons of Oil-cakes were brought from abroad. Of this quantity Canada sent 3500 tons, which, at \$30 per ton, produced a little over \$105,000. It is quite safe to say that if sent in the shape of cattle or sheep, it would have netted the country double that amount.

The export of Oil-cake, together with the estimated home consumption, indicate a total production of 180,000 bushels of Linseed for the whole Dominion in 1878. It does not appear probable that more than one-third that quantity was harvested in 1879, but in the current year the crop is said to be as large as in any former season.

In addition to the Oil from all the home seed, Canada consumed the Oil from over 220,000 bushels of foreign seed in '78 and '79, and as the Oil now pays a duty of 25%, it will be apparent that farmers have a profitable opening in cultivating Flax for the seed alone.

All writers and scientific observers of agricultural matters are quite agreed that Oil-cake is unrivalled, not only as a strong, wholesome food in itself, but in the assistance it gives to the assimilation of other foods. It keeps the bowels regular and the skin healthy, conditions necessarily precedent to taking on fat.

Mr. WM. BROWN, of the Guelph Agricultural College, says 100 lbs. Oil-cake will give 81 lbs. fat and flesh, and that Turnips, Straw, and Oil-cake will fatten any reasonable animal as fat and as cheap as most other things can.

For horses, it is useful to give a good coat. When working give half a pound to a pound per day, crushed or ground. For horned cattle Oil-cake can be advantageously used in fattening, both summer and winter. In summer with grass, hay, fermented straw, or distillery offal. In winter, or at the end of the grass season, the practice most recommended is to put the cattle in stalls and give Oil-cake from 2 to 5 lbs. per day, with hay, cut-straw, and, if necessary, oats or inferior barley.

For Cows on pasture it is invaluable, and if fed at the rate of about two pounds a day increases the flow and richness of the milk to an extraordinary extent. The best dairy farmers in England adopt this practice.

BR
665.352
E48

For fattening sheep, as much as a pound per day with hay and turnips has been found profitable.

For pigs, the same quantity may be used as for sheep.

MR. HALL the eminent English authority on the American cattle trade, in his examination before the Agricultural Commission, gave very strong testimony as to the value of Oil-cake in feeding cattle during preparation for exportation and during the voyage. It should be borne in mind that if it is desired to produce the highest class of beef, mutton, or pork, Oil-cake should be given continuously from the time the animal commences to take solid food.

This paper is distributed in the hope of inducing Ontario farmers to feed this valuable product of their farms at home, rather than allow it to enrich lands in Scotland and England. At present, in proportion to population, forty-three times more Oil-cake is used in Britain than in Canada.

The extensive use of Oil-cake in Britain arises not only from its value as a food, but very largely on account of the value of the manure which remains after feeding it. Careful experiments indicate the following scale of value for the manure for each ton of material fed on the farm in England :

Turnips and Carrots,	\$0 96
Straw,	2 20
Hay,	3 64
Oats,	5 60
Indian Corn	6 07
Peas,	15 25
Oil-cake	18 50

Although these figures will not apply in Canada where the products of the farm in the shape of grain, cattle, &c., are lower than in Britain, they clearly show the proportionate value of the residue from the different foods, and explain the reason why thousands of English farm leases contain a stipulation that so many tons of Oil-cake shall be fed to animals on the farm each year during the continuance of the holding. In some cases it is required that if the Oil-cake be not fed, it shall be spread on the land as manure.

Our make is acknowledged to be equal to any offered in Great Britain, and could not be well otherwise, as it is always made from clean, screened Flaxseed, without adulteration or admixture.

We are at most times ready to supply car-load quantities at a day's notice, but we do not supply less than a ton. For shipment, we pack in gunny bags holding 200 lbs., for which there is a charge of 20 cents each.

Prices fluctuate with the course of the British Markets, and vary according to the quantities required. Quotations will be forwarded by mail on application.

As we pay for the seed before we get it, and pay cash for labour, the terms are invariably, cash with order.

ELLIOT & CO.,

No. 3 FRONT STREET EAST,

TORONTO.

CANADA OIL & PAINT MILLS.



