

**CIHM
Microfiche
Series
(Monographs)**

**ICMH
Collection de
microfiches
(monographies)**



Canadian Institute for Historical Microreproductions / Institut canadien de microreproductions historiques

© 1998

Technical and Bibliographic Notes / Notes techniques et bibliographiques

The Institute has attempted to obtain the best original copy available for filming. Features of this copy which may be bibliographically unique, which may alter any of the images in the reproduction, or which may significantly change the usual method of filming are checked below.

- Coloured covers / Couverture de couleur
- Covers damaged / Couverture endommagée
- Covers restored and/or laminated / Couverture restaurée et/ou pelliculée
- Cover title missing / Le titre de couverture manque
- Coloured maps / Cartes géographiques en couleur
- Coloured ink (i.e. other than blue or black) / Encre de couleur (i.e. autre que bleue ou noire)
- Coloured plates and/or illustrations / Planches et/ou illustrations en couleur
- Bound with other material / Relié avec d'autres documents
- Only edition available / Seule édition disponible
- Tight binding may cause shadows or distortion along interior margin / La reliure serrée peut causer de l'ombre ou de la distorsion le long de la marge intérieure.
- Blank leaves added during restorations may appear within the text. Whenever possible, these have been omitted from filming / Il se peut que certaines pages blanches ajoutées lors d'une restauration apparaissent dans le texte, mais, lorsque cela était possible, ces pages n'ont pas été filmées.
- Additional comments / Commentaires supplémentaires:

L'Institut a microfilmé le meilleur exemplaire qu'il lui a été possible de se procurer. Les détails de cet exemplaire qui sont peut-être uniques du point de vue bibliographique, qui peuvent modifier une image reproduite, ou qui peuvent exiger une modification dans la méthode normale de filmage sont indiqués ci-dessous.

- Coloured pages / Pages de couleur
- Pages damaged / Pages endommagées
- Pages restored and/or laminated / Pages restaurées et/ou pelliculées
- Pages discoloured, stained or foxed / Pages décolorées, tachetées ou piquées
- Pages detached / Pages détachées
- Showthrough / Transparence
- Quality of print varies / Qualité inégale de l'impression
- Includes supplementary material / Comprend du matériel supplémentaire
- Pages wholly or partially obscured by errata slips, tissues, etc., have been refilmed to ensure the best possible image / Les pages totalement ou partiellement obscurcies par un feuillet d'errata, une pelure, etc., ont été filmées à nouveau de façon à obtenir la meilleure image possible.
- Opposing pages with varying colouration or discolourations are filmed twice to ensure the best possible image / Les pages s'opposant ayant des colorations variables ou des décolorations sont filmées deux fois afin d'obtenir la meilleure image possible.

This item is filmed at the reduction ratio checked below / Ce document est filmé au taux de réduction indiqué ci-dessous.

	10x		14x		18x		22x		26x		30x	
			✓									
	12x			16x		20x		24x		28x		32x

The copy filmed here has been reproduced thanks to the generosity of:

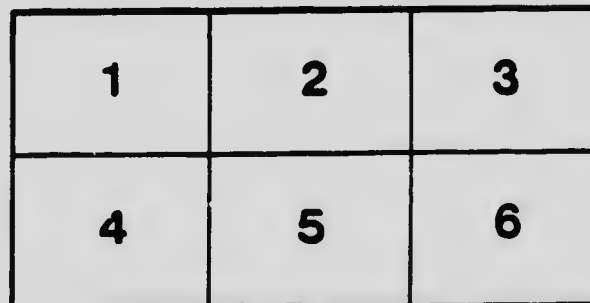
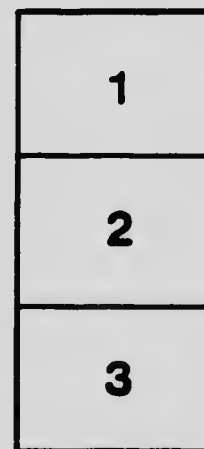
British Columbia Archives and Records Service.

The images appearing here are the best quality possible considering the condition and legibility of the original copy and in keeping with the filming contract specifications.

Original copies in printed paper covers are filmed beginning with the front cover and ending on the last page with a printed or illustrated impression, or the back cover when appropriate. All other original copies are filmed beginning on the first page with a printed or illustrated impression, and ending on the last page with a printed or illustrated impression.

The last recorded frame on each microfiche shall contain the symbol \rightarrow (meaning "CONTINUED"), or the symbol ∇ (meaning "END"), whichever applies.

Maps, plates, charts, etc., may be filmed at different reduction ratios. Those too large to be entirely included in one exposure are filmed beginning in the upper left hand corner, left to right and top to bottom, as many frames as required. The following diagrams illustrate the method:



L'exemplaire filmé fut reproduit grâce à la générosité de:

British Columbia Archives and Records Service.

Les images suivantes ont été reproduites avec le plus grand soin, compte tenu de la condition et de la netteté de l'exemplaire filmé, et en conformité avec les conditions du contrat de filmage.

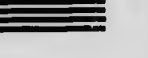
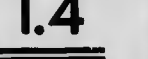
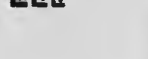
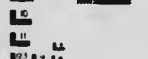
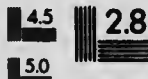
Les exemplaires originaux dont le couverture en papier est imprimée sont filmés en commençant par le premier plat et en terminant soit par la dernière page qui comporte une empreinte d'impression ou d'illustration, soit par le second plat, selon le cas. Tous les autres exemplaires originaux sont filmés en commençant par la première page qui comporte une empreinte d'impression ou d'illustration et en terminant par la dernière page qui comporte une telle empreinte.

Un des symboles suivants apparaîtra sur la dernière image de chaque microfiche, selon le cas: le symbole \rightarrow signifie "A SUIVRE", le symbole ∇ signifie "FIN".

Les cartes, planches, tableaux, etc., peuvent être filmés à des taux de réduction différents. Lorsque le document est trop grand pour être reproduit en un seul cliché, il est filmé à partir de l'angle supérieur gauche, de gauche à droite, et de haut en bas, en prenant le nombre d'images nécessaire. Les diagrammes suivants illustrent la méthode.

MICROCOPY RESOLUTION TEST CHART

(ANSI and ISO TEST CHART No. 2)



APPLIED IMAGE Inc

1653 East Main Street
Rochester, New York 14609 USA
(716) 482 - 0300 - Phone
(716) 288 - 5989 - Fax

NWp

971.3

062

1910

REFERENCE

✓

Opportunities in British Columbia

1910



Extracts from
Heaton's Annual

PROVINCIAL ARCHIVES OF B. C.

Heaton's Agency, Toronto

Copyright by Ernest Heaton, Toronto

PROVINCIAL LIBRARY

VICTORIA, B. C.

Extracts from Heaton's Annual, which contains similar official information covering every Province in the Dominion. Cloth edition (The Commercial Handbook of Canada) 5/-; Abbreviated paper edition (Opportunities in Canada) 1/-, can be obtained from all booking agents in Great Britain, all Canadian booksellers, or Heaton's Agency, Toronto.

PROVINCIAL BUREAU OF A.S.

Opportunities in British Columbia

Agriculture

APPLES. In 1908, British Columbia won the highest awards at London, Edinburgh, Birmingham, Leeds, Bristol, Bath, Harwich and other exhibitions in Great Britain, and thirteen first prizes out of fourteen entries at Spokane, Washington, in competition with the principal apple-growing districts in the United States. Cost of 10-acre orchard: 10 acres at \$200, \$2,000; fencing, \$100; trees, cultivation, etc., first year, \$350; cultivation, etc., for four years, \$800; total, \$3,250. Value after 5 years, \$6,000. Annual return after 5 years, \$1,200 to \$2,000. Markets—local—Alberta, Saskatchewan, Manitoba, Great Britain, New Zealand, Australia—1,000 tons of apples were imported in 1908. Write to Department of Agriculture, Victoria, for Bulletin No. 20, giving varieties of trees suitable for different localities.

BEEKEEPING. Conditions are favorable, especially in the fruit-growing districts. Honey sells for 25 cents per pound. 85,000 pounds imported in 1908.

CATTLE. The Fraser River Valley and the interior plateaus are peculiarly adapted to cattle raising. Practically all the beef raised is grown under the range conditions. The local demand from June to December is supplied within the province. For the rest of the year the supply is obtained from Alberta. Very little winter fattening is done in the province. Ranch cattle, chiefly Shorthorn and Hereford grades, sell from 3½ to 5 cents per lb., alive at shipping points.

DAIRYING. Good water and luxuriant grasses are in plenty. A favorable climate on coast. Local demand is constantly increasing. Twenty-two co-operative and private creameries are established. The Provincial Government aids



Country Scene on Vancouver Island, B.C.

establishment of co-operative creameries. Output of creameries in 1908, 1,650,000 pounds; dairies, 450,000 pounds, all sold locally. Average price, 34 1/7 cents. Total value, \$659,000. This represents about 33 per cent. of the butter consumed in B.C. and Yukon. Two cheese factories produced, in 1908, 179,500 pounds, sold at 13 1/2 cents.

FLAX. Cultivated successfully. There is an oil mill at Mission, B.C. Flax is only used as fodder; no attempt has been made to manufacture linen.

FLOWERING BULBS. The soil and climate of Vancouver Island, near Victoria, is peculiarly adapted to the production of flowering bulbs. Nearly all the bulbs used in North America are imported from Europe. Estimated profits over \$2,000 per acre.

FODDER CROPS. Besides the nutritious bunch grass, which affords good grazing to cattle, horses and sheep on the benches and hillsides, all the cultivated grasses grow in profusion wherever sown. Red clover, alfalfa, sainfoin, alsike, timothy and brome grass yield large returns—three crops in the season in some districts and under favorable circumstances. Hay averages about 1 1/2 tons to the acre and the average price \$17 to \$25.

FRUIT GROWING. It is estimated one million acres south of 52nd degree will produce all fruits of the temperate zone. Apples of excellent quality will grow as far north as Hazelton, on the Skeena River, between 55 and 56 degrees north. Nectarines, apricots, fruits, almonds and nuts have been tried with success. In 1891, total acreage in fruit was 6,437; in 1901, 7,430; in 1905, 22,000; in 1908, 100,000. In 1902, the first shipment were 1,956 tons; in 1907, 4,743 tons. Large profits are made in the business. For districts see under "Agricultural Lands."

GRAPES. Tokay, Concord, Campbell's Early and Moore's Diamond are the varieties chiefly cultivated. Grape-growing has not been established in a commercial sense, though conditions are favorable in all southern districts.

HOP CULTURE. The Okanagan, Agassiz and Chilliwack Districts are well suited to hop-growing and produce large quantities, unexcelled in quality. British Columbia hops demand good prices in the British market and most of the crop is sent there, though recently Eastern Canada and Australia are buying increasing quantities. The yield of hops averages 1,500 pounds to the acre and the average



Picking Prunes in the Okanagan Valley, B.C.

price is 25 cents per pound. An exhibit of British Columbia hops, sent to the New Zealand International Exhibition in 1906, was greatly admired and was the means of opening a new market for this product.

HORSES. There is a good general demand for heavy, draught horses; good horses bring \$500 to \$800 a pair. The demand for carriage horses, chiefly confined to coast cities, is increasing. The medium animals bring from \$200 up; better animals from \$350 to \$1,500 each.

POULTRY. Importations of eggs and poultry average \$500,000 annually. All parts of the province suitable to poultry raising. Eggs average 37½ cents per doz. Poultry 22 to 30 cents per pound. Forty carloads of poultry imported in 1908.

ROOTS AND VEGETABLES. All kinds of roots and vegetables grow to perfection and sell at high prices. Potatoes, turnips, beets, mangolds, and all the other roots grow in profusion wherever their cultivation has been attempted. Sixty-eight tons of roots to a measured acre is recorded at Chilliwack, and near Kelowna, on Okanagan Lake, 20 acres produced 403 tons of potatoes, which sold at \$14 per ton. The Dominion census places the average yield of potatoes at 162.78 bushels to the acre. The average price of potatoes is \$1.60 per sack, while carrots, turnips, parsnips and beets sell at an average of about 60 cents per bushel.

SHEEP. On Vancouver Island, and in the Gulf of Georgia, flocks of from 25 to 400 have always proved profitable. The foundation of the flocks are Down grades, on which are used Shropshires, Southdown, Oxford, Leicester, and Cotswold; on the lower mainland, particularly at Chilliwack and Ladner, sheep are profitably reared. In the interior, sheep are kept on the farms in small lots. The timber wolf and panther have to be guarded against. The demand far exceeds the supply; 60,000 head of live sheep are annually imported from the State of Washington, a number from Alberta, and many thousand frozen carcasses from Australia.

SWINE. Hogs are profitably grown in all farming districts. The demand for pork far exceeds the supply. Live hogs bring an average of 7 cents per lb. the year round. A large packing plant in Vancouver has to depend largely upon outside points for hogs. There are several small curing houses. There was imported: Bacon and ham, 2,187,300 lbs.; salt pork, 49,000 lbs.; lard, 1,597,000 lbs.;



A Typical Bay on the Okanagan Lake, B.C.

live hogs, 4,090 head. Value of above, \$465,000. These figures do not include imports from other provinces, and represent only about 26% to total importation.

TOBACCO. Tobacco has been notably successful in Okanagan. Cuban seed is imported and changed every three or four years, because as the leaf increases in size the flavor diminishes. A factory at Kelowna produces cigars equal to good Havanas, with filler made of local tobacco and a Sumatra wrapper. Ontario or Quebec tobacco has been used for binders. Actual results from 20 acres show the following returns: Proceeds of 24,000 lbs. at 10 cents, \$2,400. Total expenses, including rent, \$1,294; net profit, \$1,016.

Agricultural Lands

AREA CULTIVABLE. Professor Macoun, after personal investigation, says: The whole of British Columbia south of 52 degrees, and east of the Coast Range, is a grazing country up to 3,500 feet, where irrigation is possible. Roughly estimated, these fertile lands may be set down at one million acres. North of 52 there are 10 million acres of agricultural land.

CARIBOO AND CASSIAR. 196,000,000 acres, of which 10,000,000 acres will produce wheat. These great northern districts, practically unexplored and undeveloped, are suitable for cattle raising and farming. The country is lightly timbered. There are many fertile valleys which are attracting settlers. In South Cariboo are several flourishing ranches. Grain, vegetables and cattle find a market in the Mining Camps.

COMOX DISTRICT. 4,000,000 acres. Includes N. part of Vancouver Island and part of opposite mainland; as yet sparsely populated. There is good farming land on many of the islands and near Comox. North from Seymour Narrows large areas with drainage would make valuable cattle ranges.

COMPANY LANDS. Large tracts have been developed by companies and individuals for sale in farm lots. In the Boundary district wild land is held at from \$1.00 to \$5.00 per acre. Improved land is held at from \$50 to \$150 per acre. Similkameen, \$50 to \$200, the latter irrigated. Okanagan Lake irrigated and improved, \$100 to \$300; and non-irrigated \$5 to \$50. Okanagan bush land, \$5 to \$20, partly cleared and improved, \$10 to



Okanagan Falls, Penticton, B.C.

\$50, and up to \$100. In the lower mainland, i.e., the sea coast west of the Coast Range, unimproved land, \$5 to \$20. Dyked land, \$40 to \$150. In Vancouver, and adjoining islands, wild land mostly heavily timbered, \$5 to \$10; improved land, \$20 to \$200. Some of the principal land companies are: The Coldstream Estate, Ltd., Vernon; White Valley Irrigation and Power Co., Vernon; Kelowna Land and Orchard Co., Kelowna; South Okanagan Land Co., Penticton; Kettle Valley Irrigated Fruit Lands Co., Vancouver; Fruitlands, Ltd., Kamloops; Peachland Townsite and Irrigation Co., Peachland; Summerland Development Co., Summerland; Settlers' Association of British Columbia, Vancouver; Canadian Real Properties Ltd., Kamloops.

DOMINION LANDS. All land within 20 miles on each side of C.P.R. main line belongs to the Dominion, and is administered by the Department of the Interior practically according to same regulations as the public lands in Manitoba, Saskatchewan and Alberta.

FRUIT GROWING DISTRICTS. It is estimated one million acres south of 52nd degree will produce all fruits of the temperate zone. The recognized fruit districts include the southern part of Vancouver Island and the Gulf Islands. Lower Fraser River Valley, Thompson River Valley, Shushway Lake, Okanagan, Spallumcheen, Osoyoos, Similkameen, Kootenay Lake, Arrow Lake, Lower Columbia River Valley and Grand Forks, which are all suited to the best grades of fruit, and which contain extensive areas of fruit lands. Other good fruit districts are: West Coast of Vancouver Island, West Coast of Mainland, (where patches of fruit lands are found at the heads of the numerous inlets), Lower Fraser Valley, Nicola, Grand Prairie and many other localities. It is now an established fact that apples of excellent quality will grow as far north as Hazelton, on the Skeena River, between 55 and 56 degrees north. The acreage of orchards is increasing rapidly; large profits are made in the business.

FRUIT LANDS—AGENTS. The following is a partial list of companies and individuals holding fruit lands for sale from whom more complete information can be obtained respecting the fruit industry in British Columbia:—Calgary, Alta.: F. C. Lowes & Co.—Kamloops, B.C.: Calloway & Pragnell—Lethbridge, Alta.: Freeman, MacLeod & Graham.—Nelson, B.C.: The Colonial Trust Co.—New

12 OPPORTUNITIES IN BRITISH COLUMBIA

Westminster, B.C.: McLeod, Mark & Co.—Penticton, B.C.: Kendall & Mason; Southern Okanagan Land Co., Ltd.—Vancouver, B.C.: Loewen & Harvey; Mahon, McFarland & Mahon; McLeod, Mark & Co.; A. O. P. Francis & E. D. Francis; C. D. Rand; Richards, Akroyd & Gall; Yorkshire Guarantee & Securities Corp., Ltd.—Vernon, B.C.: Coldstream Estate Co., Ltd.; Orchard, Johnston & Co.—Victoria, B.C.: A. W. Bridgman; British Columbia Land & Investment Agency, Ltd.; R. S. Day & Beaumont Boggs. These firms are known to the Editors personally, and their names are included only after careful investigation. Attention is drawn to the announcements of some of these firms under Agricultural Lands Announcements.

KOOTENAY DISTRICT. 15,000,000 acres. Forms S.E. portion of British Columbia west of summit of Rocky Mountains, drained by the Columbia and Kootenay Rivers. In East Kootenay are tracts of land suitable for fruit, grain and vegetables. Irrigation is generally required. In West Kootenay are several areas of fertile land partly utilized in fruit culture. Mining and lumber camps afford home market.

LILLOOET DISTRICT. 10,000,000 acres. Largely a pastoral country well adapted to dairying, cattle raising and fruit growing. Railway communication is lacking.

PROVINCIAL LANDS. There are no free homesteads. Agricultural land (not exceeding 160 acres) may be pre-empted. No person can hold more than one claim at a time. Claims cannot be staked by agent. Settler must occupy within 60 days from recording claim, have land surveyed within 5 years from date of record, make improvements, \$2.50 per acre and occupy continuously for 2 years. Two months' continuous absence is deemed cessation of occupation. No Crown grant can be issued to alien not naturalized. Price \$1.00 per acre in 4 equal instalments: first in 2 years from date of record. Crown lands may be purchased—1st class, \$5 per acre; 2nd class, \$2.50 per acre. Payable 50c. on application, balance on allotment. The Commissioners may raise prices. Leases of Crown lands surveyed in lots of 20 acres may be obtained subject to improvements. Crown grants are issued. Leases of 1,000 acres may be granted—for cutting hay 10 years, for other purposes 21 years. Agent may stake leased lands.

WESTMINSTER DISTRICT. 4,900,000 acres. Includes all

AGRICULTURAL LANDS ANNOUNCEMENTS 13

fertile valley of Lower Fraser. A rich agricultural district. Climate mild, with much rain. Heavy crops of hay, grain and roots are the rule. Fruit grows to perfection in profusion.

VANCOUVER ISLAND. 10,496,000 acres. There are many settlements along line of Esquimalt and Nanaimo Ry., which have land grant of 1,500,000 acres, most of which is covered with heavy timber. The Company is selling cleared land to settlers at moderate prices. All grains, grasses, roots and vegetables grow to perfection, also strawberries, small fruits, pears, plums, prunes and cherries, and in southern districts peaches, apricots, nectarines and grapes.

YALE DISTRICT. 15,500,000 acres. "The Garden of British Columbia" includes the rich valleys of the Okanagan, Nicola, Similkameen, Nicola River, N. and S. Thompson, and the Boundary. The main line of the C.P.R. passes east and west through centre. Branch lines and lake steamers give access to southern portions. New branch lines in construction will open up large areas. Cattle ranches are being rapidly divided into small holdings for fruit culture and small farms. Hops are grown in Okanagan, Agassiz and Chilliwack districts.

Agricultural Lands Announcements

The information under this heading is not officially revised. Announcements concerning lands will be accepted only when certified correct by an officer of a Board of Trade or by a responsible firm of recognized standing, personally known to the Editors. The Editors reserve the right to edit matter received.

BRITISH COLUMBIA LANDS.—THE COLONIAL TRUST CO.

We have for sale 20,000 acres of farm land on route of Grand Trunk Pacific Railway and along the Fraser River, in the interior of British Columbia. This land is pronounced by the Dominion Government geologists to be the finest in Canada for wheat growing or mixed farming. No irrigation necessary. Price \$15 to \$20 per acre. Terms easy. The Colonial Trust Co., Nelson, B.C.

C.P.R. LANDS. The Canadian Pacific Ry. Co. control large areas of farming, fruit and ranching lands in the Kootenay and Boundary and Okanagan districts. Price first-class land, \$5.00 per acre up. Second class, \$2.50 to \$5.00. Third class, \$1.00 to \$2.50. Payments made

14 OPPORTUNITIES IN BRITISH COLUMBIA

with 6% interest in equal annual instalments. In addition \$2.00 per M. ft. B.M. for all timber land contains at time of purchase. Minimum area sold 160 acres. Half fare of settlers on C.P. Ry. paid in travelling to B.C. will be applied to second instalment. The Canadian Pacific Ry. Co. also hold for sale large tracts of timber lands on the mainland. Price \$1.00 per acre and all timber upon it \$2.00 per thousand. Terms 1/5 cash. balance with 6% interest in four and nine equal annual instalments. Purchaser must pay also Government royalties and taxes. Apply for information to J. S. Dennis, Assistant to 2nd Vice-President C.P.R., Calgary, Alberta.

GRAND FORKS DISTRICT. City is situated in a level, stoneless valley, 20 miles long and 3 miles wide, mostly cleared or with saleable timber. Heavy grain, vegetables, and small fruits grown. Orchards coming to maturity. Trees fruit at 4 years. Long summers with cool nights, short winters, bright weather, light snowfall; rainfall sufficient for ordinary crops; irrigation easily obtained if desired. Fruit wins firsts at all big shows, Spokane, Vancouver, and London, Eng. Improved and wild lands at cheap prices. Good local market provided by mining, smelting and lumbering; earliest produce and fruit to reach Crow's Nest District and prairie. See description of Grand Forks, Write Sec. Bd. Trade, Grand Forks, B.C.

KAMLOOPS DISTRICT. Centre of the famous dry belt. District extends 220 miles north, 70 miles east, 60 miles south, and 30 miles west. Dry belt is so named because irrigation is commonly used. A world-wide reputation for cultivation of apples, peaches, and a variety of other large and small fruits. Orchard and improved farm lands adapted for mixed farming from \$30 to \$150 per acre. Government lands, where available, from \$2.50 to \$5 per acre. Extensive stock-raising carried on. Mining has been successful. Estimated population of district, 8,000. For full particulars, illustrated pamphlet, and answers to any questions, write to John F. Smith, Sec. B.C. Inland Board of Trade, Kamloops, B.C.

KELOWNA DISTRICT. Kelowna fruit has won (1) Great Challenge Silver Cup for commercial exhibit of fruit, Dominion Exhibition, New Westminster, 1905. (2) Knightian Silver-Gilt Medal for collection of apples, Royal Horticultural Society, 1905. (3) Banksian Silver Medal, collection of apples, Royal Horticultural Society, 1905. (4) Banksian

AGRICULTURAL LANDS ANNOUNCEMENTS 15

Silver Medal, collection of apples and pears, Royal Horticultural Society, 1906. (5) Knightian Silver Medal, collection of apples, Royal Horticultural Society, 1907. (6) Silver Medal, collection of fruit, Northwest Fruit Growers' Association, Vancouver, 1907. It pays to grow fruit in Kelowna. See description of Kelowna. Write Sec. Bd. of Trade, Kelowna, B.C.

KOOTENAY DISTRICT.—G. H. WALTON & CO. We have fruit lands for sale in the Whatshan Valley, with frontage on Whatshan River at \$30.00 per acre, and on Columbia River, within one mile of Trail, at \$30.00 per acre, and adjoining the town of Silverton, with about half a mile of frontage on Slocan Lake, at \$50.00 per acre. A. McNeill, Chief of the Fruit Division at Ottawa, states: "The only province of Canada that can produce apples of the fancy class is British Columbia, and I have come to the conclusion that the only district even in British Columbia that can produce it, is the Kootenay." The soil and climate are wonderful, unequalled anywhere in Canada. At New Westminster Exhibition Kootenay fruit won highest honors, scoring 10 points higher than Okanagan, and from 60 to 65 over Coast Districts. We are also agents for wheat lands in Manitoba, Saskatchewan and Alberta. Write G. H. Walton & Co., 408 McIntyre Block, Winnipeg, Man.

NELSON DISTRICT. In the immediate vicinity of Nelson, as well as throughout the greater part of the District of West Kootenay, of which Nelson is the commercial centre, are found lands suitable for the cultivation of apples, pears, plums, strawberries, and all small fruits. These lands, generally speaking, lie along the banks of rivers and lakes, which afford ready means of travel and communication. Mountain streams give a plentiful supply of water. Irrigation, however, is not always needed. Owing to the peculiar soil, climate and situation, the fruit of Nelson District ranks for size and flavor among the best to be found on the continent. A ready and assured market exists in the adjacent provinces of Manitoba, Saskatchewan and Alberta, where fruit is not grown. See description of Nelson. Write E. K. Beeston, Sec. Bd. Trade, Nelson, B.C.

PENTICTON DISTRICT. Municipality comprises 7,000 acres of sandy loam soil. Prices, unimproved land, \$125 to \$550 per acre for bearing orchards. Products—Peaches, apricots, nectarines, cherries, the most tender varieties of



Part of the largest Orchard in Canada—435 acres—on the Coldstream Estate
at Vernon. B.C.

AGRICULTURAL LANDS ANNOUNCEMENTS 17

apples, vegetables, and small fruits. Splendid irrigation system. Peaches bear the 4th year; 5th year produce 3 boxes (\$3) a tree, and in full bearing up to 12 boxes. Apples full bearing 800 lbs. a tree, fetching 2c. per lb. Secret of the climate is the lakes, all orchards within 1½ miles of them. See description of Penticton. Write Sec. Bd. Trade, Penticton, Okanagan Valley, B.C.

PENTICTON.—SOUTHERN OKANAGAN LAND CO., LTD. We have irrigated at Penticton, B.C., about 4,000 acres of fruit land. About 75% of this has been disposed of in 10-acre tracts. We also own the magnificent valley of the Southern Okanagan, extending to the International Boundary; some 12,000 acres of this will shortly be irrigated and offered for sale at from \$150 to \$300 per acre. Soil is light to medium clay loam, covered with sage brush and bunch grass. All this land borders the Okanagan River and the charming Lake of Osoyoos and constitutes the finest tract of fruit-growing land in British Columbia. See description of Penticton. Write the Southern Okanagan Land Co., Ltd., Penticton, B.C.

SOUTHERN OKANAGAN VALLEY.—KENDALL & MASON. Fruit growing in the Southern Okanagan Valley is profitable and enjoyable. We have an ideal climate, absence of pests and frosts, unlimited market and an assured railway. Soil composed of sandy loam and volcanic ash. Bearing orchard in peaches and apples yield \$300 an acre per annum. Orchard land costs \$150 to \$250 per acre; orchard, cattle and sheep ranches up to 1,400 acres, with unlimited free range, cost \$10 per acre and up. Write for full information to Kendall & Mason, Penticton, Okanagan Valley, B.C.

SUMMERLAND DISTRICT. On Lake Okanagan. Scenery has been compared with Northern Italy. Delightful climate. Soil wonderfully fertile. Under irrigation, peaches, apples, pears, plums, apricots, cherries, grapes, and all small fruits grow to perfection. Irrigated area, 6,000 acres, will be largely increased. Unlimited permanent water supply. Apples have won highest awards in Great Britain against all colonies for 4 successive years. Eminent fruit experts assert confidently that geological conditions assure permanence of fruit industry. See description of Summerland. Write R. H. Agur, Pres. Bd. of Trade, Summerland, B.C.

VERNON.—COLDSTREAM ESTATE. The Coldstream Estate Company, Limited, near Vernon, B.C., in the Okanagan Valley, owned principally by the Earl of Aberdeen and Mr. James Buchanan, will sell fruit lands from 10 acres upwards, all under the White Valley Irrigation and Power Company's up-to-date irrigation system. Water rates are approved by the Government and purchaser pays only for what he uses. A first-class and plentiful domestic water supply is assured. The purchaser can have lands cultivated by the company, who have 435 acres of orchard, for which they employ only first-class fruit experts; thus the interests of the purchaser is identical with the company's. Good roads, telephone, and facilities that appeal to the fruit-grower who wishes to have the social advantages of a good neighbor. See description of Vernon. For further information and particulars and pamphlets, apply to the Local Agent, P. Dickson, Vernon, Okanagan Valley, B.C., or the Secretary, Clarence House, Martins Lane, Cannon St., London, England.

VERNON.—ORCHARD, JOHNSTON & CO. In opportunities for agriculture and fruit growing, this great district differs little from other parts of the Okanagan. But its central position gives Vernon special advantages. Land costs from \$15 per acre up, according to classification. Young orchards from \$250 per acre up, farming lands from \$20 to \$100 per acre and upwards. "Orchard's Guide and Directory to the Okanagan" (illustrated), a book endorsed by the Board of Trade, gives full details regarding climate, soil prices, conditions, outlay and returns, etc. Both the book and the business of this firm are based upon many years of practical experience. See description of Vernon. If you seek any information about lands in this district, write us for free particulars and price lists, Orchard, Johnston & Co., Vernon, Okanagan Valley, B.C.

Fishing

BLACK COD. This fish abounds along west shore of Queen Charlotte Islands; is said to be more appetizing than the true cod, but has been hitherto difficult to preserve for market.

FISHERIES. The shore line extends nearly 7,000 miles, with a protected territory of nearly 30,000 square miles

abounding with commercial fish. These include salmon, herring, sturgeon, bass, oolachans, smelts, flatfish, black cod, perch, trout, skiff, sardines, anchovies, shad, oysters, crabs, shrimps, prawns. The production of the B.C. fisheries for 1907 was \$6,122,922. Total value of equipment, including sealing fleet, was \$4,767,863; men employed, 13,257, including 417 seal hunters. The industry is capable of enormous expansion. A large number of fishing interests have combined in the British Columbia Packers' Association, with a capital of \$2,780,000.

HALIBUT. The British Columbia halibut fisheries are valued at \$500,000 a year. They are largely in the hands of U.S. firms, who make large catches. The fish weigh 100 lbs. or more, but generally do not run so large as formerly. A Canadian company has been formed to work the halibut fisheries of Queen Charlotte Islands, said to be the richest in the world. Halibut is being shipped as far as Nova Scotia.

HERRING. The B.C. herring fisheries, already important, can be greatly developed. Herring are caught all along the coast, and in the north equal the large Labrador herring. If the movements of the school are ascertained by a scientific survey, herring can be caught all the year round. The catch at Nanaimo in 1908 was 20,000 tons, the bulk of which went to Japan.

SALMON. The B.C. salmon industry has been seriously injured by the lack of concurrent regulations on the coast of the State of Washington, which is traversed by the main schools of salmon passing from the sea to the Fraser River. The sock-eye salmon appear in greater numbers every fourth year. It has been ascertained that the salmon in each year's run are four years old. As the catch each fourth year is a large one it is likely to gradually grow less. The catch in 1909 is estimated at 290,000 cases.

SEALING. In 1907 the sealing fleet and equipment was valued at \$367,650. The industry employed 197 white men and 220 Indians. 16 vessels secured 5,240 seals in the Behring Sea. Indians along the coast captured 157 seals, making the total Canadian catch 5,397 seals. Victoria is the headquarters of the fleet. In 1908 the catch of fur seals amounted to 4,954 skins.

SHELL AND BUTTON INDUSTRY. The shell industry is unexploited. There are many fresh and sea water shells that could be turned to account. The abalone, or ear



Logging in British Columbia

shell, found in British Columbia, can be developed, as in California, into a profitable business. There the shells are polished whole, or shaped into brooches, cuff pins and novelties, and the market is ever widening.

SHRIMP INDUSTRY. Shrimps and prawns abound on the Pacific Coast. A limited fishery is pursued. The development of a canning industry is capable of great expansion.

WHALING. There are several whaling stations on the west coast of Vancouver Island. The Pacific Whaling Co. have made large profits. The catch includes fin backs, hump backs, sulphur bottoms, and occasionally sperm whales. Monsters 100 feet in length have been taken. One vessel in August, 1908, captured 24 whales in one week. The total yield in 1907 was valued at \$281,848.

Forests

DOMINION GOVERNMENT LANDS. All lands within twenty miles on each side of the Canadian Pacific Railway, known as the "Railway Belt," are the property of Canada. The total area is about 17,150 square miles. In addition there is the "Peace River Block," amounting to three and a half million acres, lying between longitude 120 and 122 degrees west, and between latitude 55 degrees, 30 minutes and 57 degrees north.

FOREST AREA. The forest area is estimated at 182,750,000 acres, including lands covered with small trees. The stand of merchantable timber is estimated by Dr. Judson F. Clark at 130 billion feet. The coast is heavily timbered to Alaska. The forest line follows the shore and river valleys fringing the mountain sides. Along the coast, in close proximity to the forests, are many deep water harbors. The most valuable trees are douglas fir, cypress, red cedar, white spruce, western hemlock. Other trees include white pine, tamarack, balsam, yew, maple, and cottonwood. On the coast trees attain much larger dimensions than inland. It is claimed that the B.C. coast climate can produce as much timber in 40 years as can be grown elsewhere on the American continent in a century.

VANCOUVER ISLAND—C.P.R. LANDS. The C.P.R. Co. control a large area of agricultural and timber lands in the choicest portion of Vancouver Island, for sale on advantageous terms. Write L. H. Solly, Land Agent, Esquimalt and Nanaimo Railway Co.

126985 PROVINCIAL LIBRARY

VICTORIA, B. C.

Mining

BRICK. Suitable clay deposits are found in all districts. The manufacture is increasing rapidly. A very good deposit of fire clay exists at Clayburn near Vancouver, from which pressed brick is being made. The Silica Brick and Lime Co. manufactures a light grey lime silica brick at Victoria.

BUILDING STONE. Some very good quarries of sandstone, granite and andesite have been opened up on tide water. Except on the coast there is little building in stone. See B.C. Marble.

CEMENT. The Vancouver Portland Cement Co., manufacturing at Tod Inlet, 13 miles from Victoria, have a capacity of 300,000 barrels in a year.

COAL. Beds occur in Vancouver Island, the Crow's Nest Pass, at Princeton, Nicola and the Bulkeley Valley and the Queen Charlotte Islands. In 1907 actual production was practically confined to Crow's Nest Pass Collieries in East Kootenay, and the Wellington Colliery Co. and the Western Fuel Co., on Vancouver Island. The gross output was 1,677,849 long tons. The Crow's Nest Pass mines are 250,000 acres in extent. Total thickness, 300 ft.; 80 seams.

COKE. The output of coke in 1908 was 247,399 long tons. There are 424 ovens at Fernie, 464 at Michel, 240 at Carbonado. The porosity of the coke is 43.46, enabling a very rapid consumption.

COPPER. The output for 1908 was 47,274,614 lbs., having a gross value of \$6,240,249, nearly seven million lbs. more than in 1907. The chief producers are the Granby Co. British Columbia Copper Co., and the Dominion Copper Co., which own their own smelters, and the Tye, operating a smelter at Ladysmith on Vancouver Island. The Rossland production comes from the gold ores. Copper also occurs in the Yale, Kamloops, Nelson and Similkameen districts, and Queen Charlotte Island. The average assays of copper ores in the various camps, based upon the copper recovered, was: Boundary, 1.35%; Coast, 2.87%; Rossland, 0.834%.

GOLD, LODE. Value of gold produced in 1908, from lode mining, was \$5,282,880, an increase of \$1,227,860 over 1907. About 95% of the gold produced is recovered

from smelting copper-bearing ores. The only stamp mill of any importance is at Hedley, in the Osoyoos Mining Division.

GOLD, PLACER. The production in 1907 was about \$647,000, a decrease of \$181,000 as compared with 1907. The Cariboo District contributed half of this output. Individual miners produce 30%, chiefly from "drifting" operations, which can be carried on in the winter.

LEAD. In 1908 the production of lead amounted to 43,195,733 lbs. valued at \$1,632,799. The ore is generally treated at local smelters.

MARBLE. There are excellent marble quarries at Kootenay Lake, east of Kaslo, Lardo, and at Nootka, Vancouver Island.

MINERAL PRODUCTION. The annual Mineral Production of British Columbia for the past ten years, as published by the Bureau of Mines, British Columbia, is as follows:

1899.....	\$12,393,131	1904.....	\$18,977,359
1900.....	16,344,751	1905.....	22,461,325
1901.....	20,086,780	1906.....	24,980,546
1902.....	17,486,550	1907.....	25,882,560
1903.....	17,495,954	1908.....	23,851,277

The decrease in 1908 is accounted for by the fall in the prices of silver, copper and lead.

PETROLEUM. Boring operations are under way in the Cariboo District. Indications of oil occur in Flathead Valley.

PLATINUM. Is known to exist in various parts associated with placer gold in alluvial workings, but has not been mined hitherto except as a by-product.

SILVER. Total production in 1908 was 2,631,389 ozs., valued at \$1,321,483. About 72% of the silver is found associated with lead in argentiferous galena, the remainder with copper-bearing ores. The Slocan District, including Ainsworth Mining Division, produced 50% of the total output, and Fort Steele Division 24%, all from argentiferous galena.

ZINC. Very little mining done in 1907. Certain mines in the Slocan District produced small quantities of zinc blend as concentrates separated from argentiferous galena as a by-product. A concentrator is erected to treat zinc ore developed in the Blue Bell mine opposite Ainsworth. A zinc smelter has been erected at Frank, Alta., to treat B.C. ores. The Canada Zinc Co. have erected a small plant at Nelson to treat Slocan ores by electric process.

Descriptions of Towns

This gazetteer is revised every year, and includes certified official returns from local Boards of Trade and the municipal authorities of towns where no Board of Trade is established. Information is given generally as received. The Editors reserve the right to use information obtained from other reliable resources, and to edit the returns made, but they cannot, for obvious reasons, from their own knowledge, vouch for the absolute accuracy of every detail in each case. As a general rule entries in this Register are confined to towns over 400 population. Where possible, a reliable local reference is given, who will supply further information upon request. When writing to local reference, mention should be made of "Heaton's Annual."

ABBREVIATIONS—*Tel., Telegraph; Ex., Express; Pop., Population; Alt., Altitude—feet above the sea level. Altitudes are given as furnished by the Dominion Meteorological Office at Toronto.*

ALBERNI (Vancouver Island), on River Somas. On E. & N. Ry., 35 miles from Nanaimo. Tri-monthly steamboat service with Victoria and stage to Nanaimo. Hotel, Arlington \$1.50. 4 public schools in the district, 2 saw mills. Pop. 600.

SPECIAL OPPORTUNITIES.—Logging, saw mills, mixed farming, fruit raising, timber lands, mining, poultry, beekeeping, flour mills, saw mills, woollen mills, rope and fibre plant, pulp mills. Write Sec. Bd. Trade.

ARMSTRONG, in Okanagan Valley, 32 miles from Sicamous junction on C.P.R. Dom. Ex. Tel. C.P.R. Hotels, Okanagan, Armstrong. 3 churches, high and public school, elevator (18,000 bushels), flour mill, creamery, brick plant, saw mill, electric light plant, bank, 2 livery stables, sash and door factory, waterworks. Alt. 1,187. Pop. 800.

SPECIAL OPPORTUNITIES.—Starch factory, machine shop. Write Sec. Bd. Trade.

ARROWHEAD, on Arrowhead Lake, 28 miles from Revelstoke on C.P.R. Dom. Ex. Tel. C.P.R. Hotel, Arlington \$1.50, \$2.00. 3 saw mills, livery stable, telephone, bank. Port of landing for C.P.R. boats. Alt. 1,413. Pop. 400.

SPECIAL OPPORTUNITIES.—Saw mill, tannery. Write Agent C.P.R.

ASHCROFT, on Thompson River, on C.P.R. main line. Dom. Ex. Tel. C.P.R. Stage line to Barkerville, 287 miles. Hotels, Grand Central \$2, Ashcroft \$2. 3 churches, 1 bank, newspaper, 2 livery stables, electric light plant, saw mill. Outfitting point for the Highland Valley, a promising copper district. The gateway to the Cariboo country and Nicola Valley, where large areas are being irrigated for fruit raising. A fruit and vegetable district with mixed farming and cattle ranching. Alt. 1,004. Pop. 500.

SPECIAL OPPORTUNITIES.—Laundry, baker, confectioner, dentist. Write Sec. Bd. Trade.

ATLIN, on Atlin Lake, 45 miles from Kamloops. Steamers to Cairncross in Yukon territory, connecting with White Pass and Yukon Ry. Government building, hospital, skating and curling rinks, 3 saw mills, brick yard. This neighborhood produces $\frac{3}{4}$ of placer gold of the province. Alt. 2,200. Pop. 850.

CAMBORNE, on Fish River, on C.P.R. branch line. Dom. Ex. Tel. C.P.R. Steamer to Beaton, 12 miles. Public school, waterworks, electric light, mining gold, galena, copper ores. Pop. 350.

CHILLIWACK, on Fraser River. Daily steamers to New Westminster, ferry to Harrison mills on C.P.R. Dom. Ex. Tel. C.P.R. Hotel, Harrison \$1.50. Saw, planing, shingle and wood pulp mills, machine shop, sash and door factory, hop packing, fruit canning, 2 creameries. Alt. 2,052. Pop. 700.

COMOX (Vancouver Island) on Courtney River, 60 miles n.w. Nanaimo station. Ex. at Cumberland on U.C.C. Ry. C.P.R. steamer weekly to Victoria. Tel. Government line. Pop. 750.

CRANBROOK, in fertile valley between Selkirk and Rocky Mountains on C.P.R., Crow's Nest Br. Dom. Ex. Tel. C. P. R. Hotels, Cranbrook, Cosmopolitan, Royal \$2, Canadian, Imperial \$1, \$2. 6 churches, \$50,000 school, 2 newspapers, 3 banks, 2 sash and door factories and planers within 20 miles (daily cap. 500,000 ft.), 15 saw mills, brick and terra cotta works, aerated waterworks. A fruit and agricultural district, delightful climate. Alt. 3,074. Pop. about 4,000.

SPECIAL OPPORTUNITIES.—Men with capital for farming and mining, development of iron properties, first-class hotel. Write Sec. Bd. Trade.



Parliament Buildings, Victoria, B.C.

CUMBERLAND (Vancouver Island), on Courtney River. Port at Union Wharf. On Nanaimo and Comox weekly steamer route. Hotel, Cumberland \$1 to \$2. Electric light, saw mills, colliery, mining and lumbering. Pop. 1,000.

DUNCAN'S STATION (Vancouver Island), on E. & N.E. Ry. Tel. C.P.R. 38 miles from Victoria. 4 churches (Ang., Pres., R.C., Meth.), private school for girls and young boys (The Cliffs), private school for boys, creamery, saw mill. An attractive residential district with fine bays, within a few miles, and numerous lakes. Pop. of Dist. about 600.

SPECIAL OPPORTUNITIES.—Dairying, fruit farming, lumbering, mining. Write Mgr. Bk. B.N. America.

ENDERBY, at junction of Mabel Lake and Spallumcheen River in Okanagan Valley, 23 miles from Sicamous junction on C.P.R. Hotel, Enderby \$2. 3 churches, public school, elevator (50,000 bushels), flour mill, brick and tile factory, saw mill. Mixed farming, dairying, fruit growing. Tourist resort. Good fishing, small and big game. Alt. 1,165. Pop. 700.

SPECIAL OPPORTUNITIES.—Baker, dentist. Write Agent C.P.R.

ESQUIMALT (Vancouver Island), on E. & N.W., 3 miles from Victoria. Dom. Ex. Tel. C.P.R. Harbor formerly reserved for Royal Navy, now thrown open to commerce. Fish canning. Pop. 950.

FERNIE, near Elk River, on C.P.R., G.N.R., Morissey, Fernie and Michel Ry. Dom. Ex., G.N. Ex. Tel. C.P.R., G.N., and W.U. Long Dist. Telephone. Hotels, Royal \$2. and 10 others. 5 churches, \$25,000 hospital, \$100,000 post office. Customs house, public and high schools, \$20,000 City Hall, \$15,000 fire hall, \$50,000 power station, \$25,000 rink, 4 banks, 15 saw mills (annual output 180 million ft.), brick plant, large brewery, railway car shops, foundry and machine shops, opera house, Philharmonic Society, baseball and football clubs, commercial and workingmen's clubs. Crow's Nest Pass Coal Co. employ 2,000 men, (coal reserves, 8 billion tons; annual output, 1,500,000 tons), 1,200 beehive coke ovens. Customs port of entry, judicial centre and Provincial Police Headquarters for East Kootenay. Outfitting point for hunters in East Kootenay game reserve. Big game abundant, good trout fishing. Power, 15,000 h.p. can be developed on Elk River Falls. City supplies electric light and power.



Columbia St., New Westminster

owns 200 acre natural park. Sewage treated by septic process. Alt. 3,303. Pop. about 6,000.

SPECIAL OPPORTUNITIES.—Factories for cheap furniture, sashes and doors, shipping boxes, mattresses, overalls and cement blocks, steam laundry, wholesale houses, Trust and Loan Co., smelter and blast furnace, iron rolling mills, vegetable growing. Write Sec. Bd. Trade.

FORT SIMPSON, on the Pacific Ocean, near Prince Rupert, 245 miles from Nanaimo, 15 miles from Alaska. Bi-monthly steamers from Victoria. Hudson Bay store, saw mill, canning factory. Pop. 88 whites, 1,000 Indians.

GRAND FORKS, on Kettle River, 25 miles from Rossland, on C.P.R. and G.N.R. Dom. Ex. Tel. C.P.R. Hotels, Yale \$2.50, \$3.00, Winnipeg \$1.50, Alberta \$2.50. 4 churches, electric light plant, telephone, Granby Smelter producing blister copper and large values in gold and silver, Boundary Iron Works, B.C. Steel Works, Riverside Nurseries, 2 banks, 2 newspapers, livery stable. A divisional point. Surrounding country well adapted to farming. Alt. 1,746. Pop. 2,850.

SPECIAL OPPORTUNITIES.—Manufacturers needing cheap electric power to supply local market, provided by smelting, mining, lumbering and fruit industries. 1st mortgage loans on building, real estate and tracts of land for orchard planting. Building good, medium-sized dwellings. Men with \$500 to \$2,000 will do well in small tracts for agriculture, gardening or orchard purposes, labor—good men for smelting and lumbering, saw mill, creamery, laundry. Write Sec. Bd. Trade.

GOLDEN, on Columbia River, on C.P.R., 168 miles w. of Calgary. Dom. Ex. Tel. C.P.R. Hotels, Columbia \$2, Queen's \$2, Kootenay \$2. Sash and door factory, smelter for gold, silver and copper mines. Lumber mills employ about 75 men. Alt. 2,580. Pop. 900.

SPECIAL OPPORTUNITIES.—Small steam laundry, iron foundry, box factory. Write Sec. Bd. Trade.

GREENWOOD, on C.P.R. Dom. Ex. Tel. C.P.R. Hotels, Windsor, Imperial, Armstrong. Electric light plant, telephone, 3 banks, 2 newspapers, 2 livery stables. B.C. Copper Co. smelter. Alt. 2,464. Pop. 1,500.

SPECIAL OPPORTUNITIES.—Cigar factory, miners, laborers, servant girls, fruit farmers, livery stable. Write Sec. Bd. Trade.



Fruit Lands, Kamloops, B.C.

HAMMOND. on C.P.R. Dom. Ex. Tel. C.P.R. Hotel, bank, telephone, lumber yard, creamery. A fruit-growing district. Pop. 400.

SPECIAL OPPORTUNITIES.—Fruit and vegetable cannery, harness maker, tinsmith, plumber, livery stable baker, stores for hardware, implements and drugs. Write Agent C.P.R.

HOSMER, on C.P.R. Dom. Ex. Tel. C.P.R. 4 hotels, 1 bank, newspaper, lumber yard, electric light plant. Hosmer Coal Mines, Ltd., employ about 100 men. Pop. 1,200.

KAMLOOPS, on C.P.R. Tel. C.P.R. Dom. Ex. 250 miles from Vancouver, at junction of the N. and S. branches of the Thompson River, both navigable for some distance. Hotels, Leland, Dominion, Grand Pacific, Queen's, Colonial and Kamloops House. Brewery, cigars, saw mills, sash and door factory, gun repairing establishment, machine shop, fruit cannery, 3 banks, high school, public school, and 2 private academies, good water and light system, up-to-date sewerage system and volunteer fire brigade. County seat of judicial district. Divisional station of C.P.R., centre of supply for large mining and grazing district situate in the famous dry belt. Kamloops will be the divisional station on the main line of the C.N.R., also divisional station for the branch line of G.T.P. Ry. Both of these railways are now surveying through the N. Thompson Valley for their south outlet from the Yellow Head Pass. Delightful climate makes this an ideal place for residence. Alt. 1,160. Pop., rapidly increasing, now about 4,500.

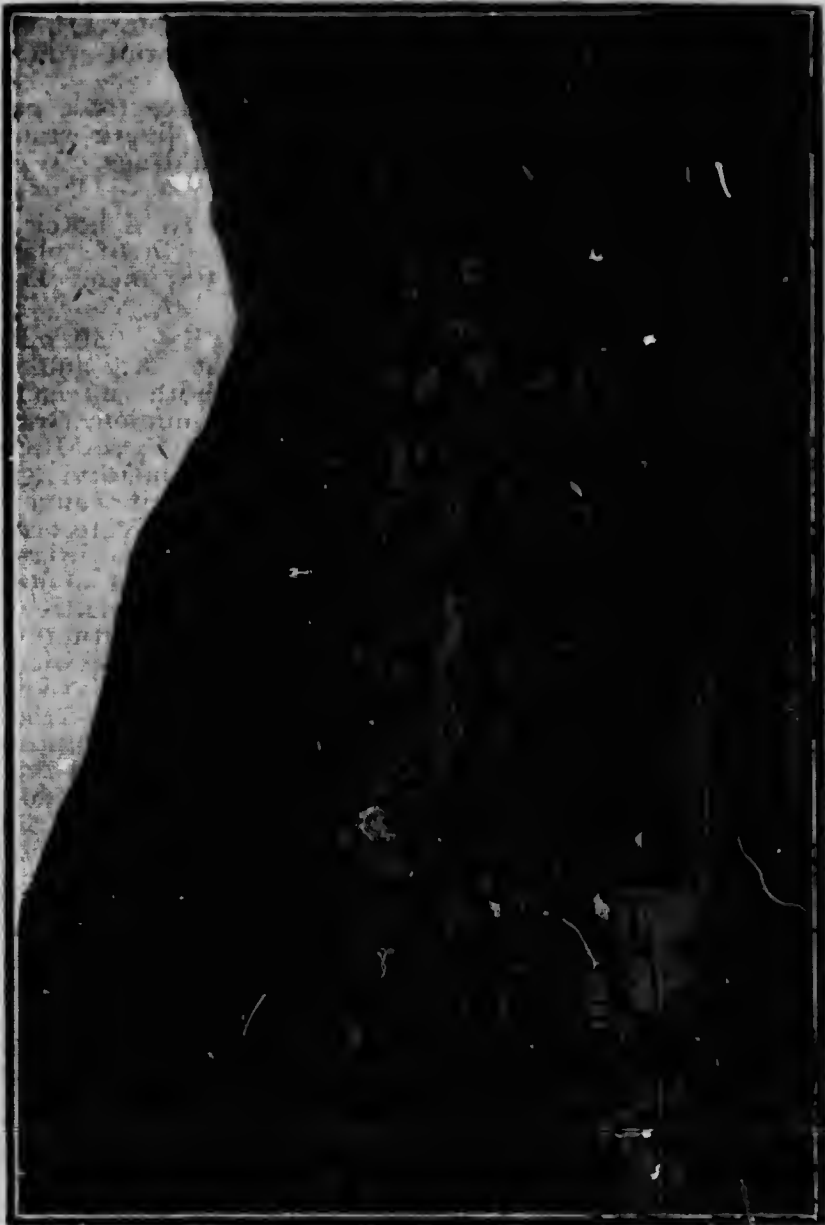
SPECIAL OPPORTUNITIES.—Implement factories, flour mill, malt house, foundry, smelter, abattoir and packing house. Tourist hotel on a large scale. Good opening for investment in real estate, farm land, stock raising and mining, and mixed farming. For further information and illustrated pamphlet, write Sec. B.C. Inland Bd. Trade, Kamloops, B.C.

KASLO, west of Kootenay Lake, 45 miles from Nelson. on C.P.R., G.N.R. Dom. Ex. Tel. C.P.R. Electric light, telephone, lumber yard, newspaper, livery stable, zinc plant, a large water power. Neighborhood supplies zinc, lead, copper, cedar. Fruit from this district obtained highest award at Royal Horticultural Society Exhibition in London, 1905. Alt. 1,752. Pop. about 1,000.

SPECIAL OPPORTUNITIES.—Saw mill, fruit growing. Write the Mayor.

PROVINCIAL LIBRARY

VICTORIA B.C.



Nelson, B.C.

KELOWNA, on Okanagan Lake, 39 miles south of Vernon, on C.P.R. Steamers to Okanagan Landing, 28 miles. Dom. Ex. Tel. C.P.R. Hotels, Lake View \$1.50 to \$2.50, Palace, Royal \$1.00 to \$2.00. High school, large public school, Ladies' Country and other social clubs. Electric light plant, telephone, cement block plants, lumber yard, 2 newspapers, 2 livery stables, saw mill, fruit packing house, 2 jam and fruit canning factories, 2 livery stables, creamery. Tobacco factory supplied by locally grown leaf. Surrounded by orchards and vegetable gardens. A very mild climate. For particulars of tobacco industry see under "Agriculture." Pop. 1,500.

SPECIAL OPPORTUNITIES.—Fruit evaporating, cold storage plant, industries allied to fruit culture, fruit growing, box factory, laundry, hotel, \$5 a day house, furniture factory, machine and electric shops, first-class livery. Write Sec. Bd. Trade.

LADNER, on G.N.R. Steamers from New Westminster, 12 miles, and Vancouver, 15 miles. Hotel, Delta, \$2.50. 4 churches, 6 schools, creamery, fish canneries, saw mill. A good farming district. Alt. 3,465. Pop. 1,000.

LADYSMITH (Vancouver Island), on Oyster Harbor, east coast of Island, on Esquimalt and Nanaimo Ry., 18 miles from Nanaimo. C.P.R. ferries, freight trains here from Vancouver, where they are transferred to the E. & N. R. Smelter of Tyee Copper Co., stove works, brewery, shingle mill, boat building, the Extension Coal Mines near by. Pop. 3,600.

SPECIAL OPPORTUNITIES.—Saw mill, pottery, fruit growing, coal shipping, and timber. Write Sec. Bd. Trade.

MOYIE, on Moyie Lake (9 miles long), and Crow's Nest & B.C. Southern Ry. 20 miles west of Cranbrook. Hotels, Kootenay \$2.00, and 4 others. 3 churches, 13 stores. The St. Eugene Mining Co., the largest silver-lead mine in Canada; Orsso Mining Co., Society Mining Co., Cambrian Mining Co., monthly pay-roll about \$50,000. Alt. 3,046. Pop. about 900.

NAKUSP, on C.P.R. 36 miles from Arrowhead. Dom. Ex. Tel. C.P.R. 2 hotels, telephone. Unlimited timber and abundant gold in neighborhood. Centre of fruit industry. Pop. 500.

SPECIAL OPPORTUNITIES.—Saw mills (unlimited timber), box factory, canning factory, sash and door factory.

brick plant, laundry, newspaper in connection with the fruit industry, saddlery, shoemaker, doctor, lawyer, stores for drugs, hardware, implements, millinery. Write Agent C.P.R.

NANAIMO (E. coast of Vancouver Island), on E. & N.R. Steamers from Victoria, 72 miles, Vancouver and New Westminster, B.C. Ex. Hotels, Wilson \$2.50, Windsor \$2. Fishing, fish curing. Industries, foundry and machine shops, cigar factory, saw mill, aerated waterworks, brewery, smelter, electric light power and heating company. Chief town of extensive farming and fruit country. A fine harbor, shipping port of the collieries of Western Fuel Co. and Dunsmuir Mines at Ladysmith. Pop. 7,000.

SPECIAL OPPORTUNITIES.—Herring fishing, whale fishing, coal mining. Write Mgr. Bk. of Commerce.

NARAMATA, on Okanagan Lake, opposite Summerland, 3 miles. Hotel, Trust Co., opera house, school, church, saw mill, boat factory, Rest Cure Sanitarium, good fishing, a fruit colony founded by J. M. Robinson, late of Brandon.

SPECIAL OPPORTUNITIES.—Fruit growing. Write J. M. Robinson, Summerland.

NELSON, on west arm of Kootenay Lake, on C.P.R., Spokane Northern Ry. Dom. Ex., G. Nor. Ex. Tel. C.P.R. Steamers to Kaslo and other points up stream and to Kootenay Landing. Hotels, Hume House, Strathcona \$3, Queen's \$2. Electric cars, electric light, high and public schools, 4 banks, daily and weekly paper, sash and door factory, brick plant, cement block plant, box factory, 4 livery stables, large smelter, foundry, machine shop, flour mill, 2 saw mills, tannery, cigar factory, fruit packing house. judicial city of Kootenay, centre of fruit-growing industry, and an important wholesale business point. Climate equable and salubrious. Good shooting and fishing in neighborhood, which supplies timber, iron, marble, silver, gold, lead and other minerals. Output of minerals in 1908 about \$7,000,000. Power, about 20,000 h.p. developed, cost in small lots about \$35 per h.p. per annum, special reduced rates over 50 h.p. Alt. 1,769. Pop. 7,000.

SPECIAL OPPORTUNITIES.—Wholesale distributing houses, mining, lumbering, saw mills, fruit farming, mixed farming, and another box factory, broom factory. Write Sec. Bd. Trade.

NEW WESTMINSTER, on Fraser River. The commercial fresh water port of the Pacific, 13 miles from salt water.

On C.P.R. and G.N. Ry. Hotels, Russell, Windsor, and several others. Centre of lumbering, farming and fishing industries. Harbor and wharfage can accommodate the largest vessels in the world. Sandbanks in the Fraser River are now being dredged to maintain a 30 ft. channel. The G.T.P. and C.N.R. will enter the city in near future, and the B.C. E. Ry. will shortly operate 75 miles east of city to Chilliwack, opening up fine agricultural district south of the river. City owns water, electric light, river foreshore, public schools, annual Provincial Exhibition building and other utilities. City has two cathedrals, high school, colleges, orphanage, free libraries, Government Bldgs., Customs House, Provincial Court House, gaol, asylum and penitentiary, theatres. Industries include large saw mills, 39 fish canneries on the Fraser River, 4 iron works, machine shops, car building works, cold storage plants, can factory, cigar works, tannery, creamery, brewery, distilling, box mills, wood pipe factory, etc. Electric and water power is abundant, fine scenery and climate. Sport readily obtained. Pop. about 13,000.

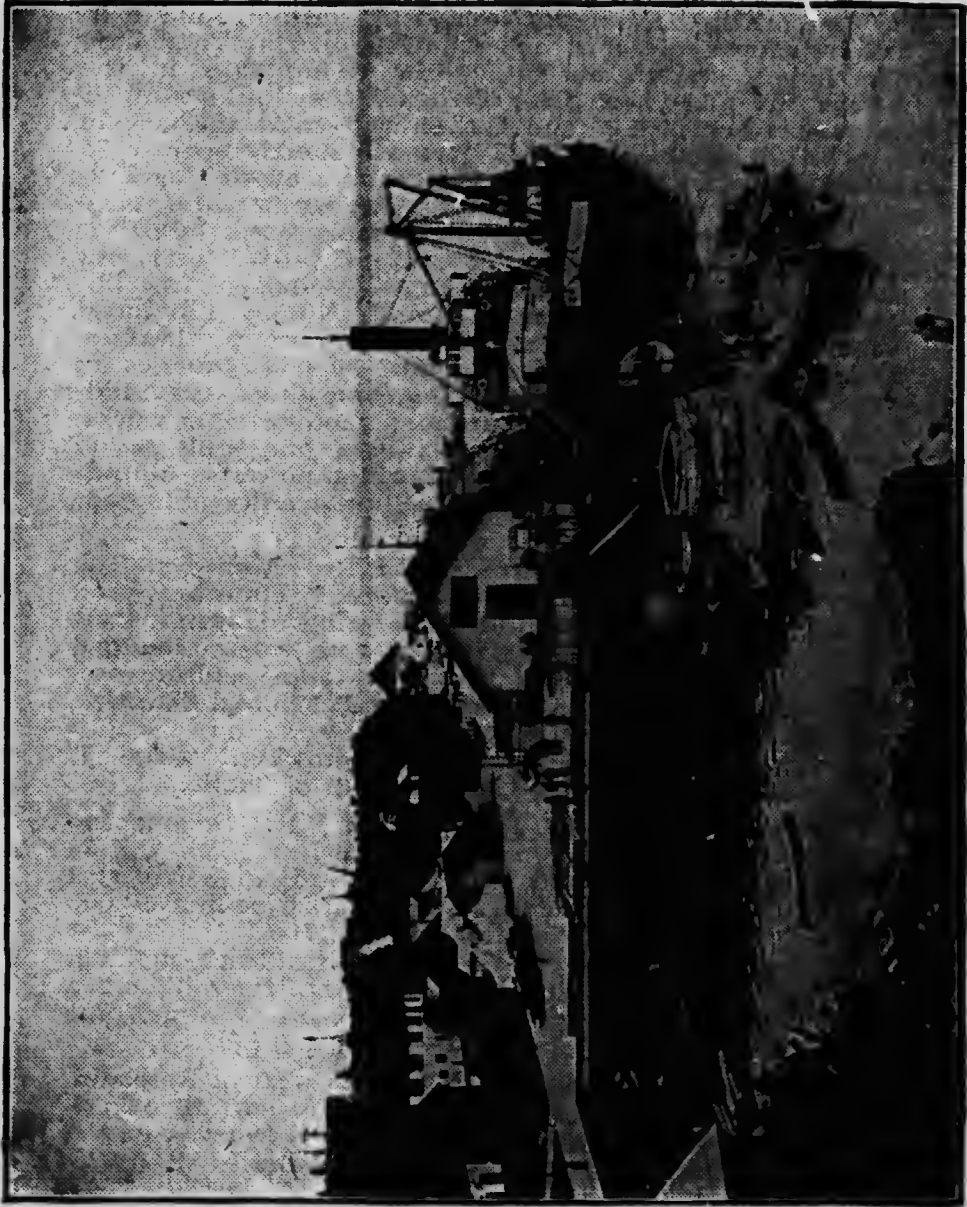
PEACHLAND, on Okanagan Lake, on C.P.R. Dom. Ex. Tel. C.P.R. Temperance Hotel, telephone, 4 churches, good school, free library, sporting club, string orchestra, fruit cannery, box factory. A fruit-growing colony founded by Mr. J. M. Robinson, of Brandon. Peach culture predominates. Irrigation controlled by Peachland Townsite Co. Pop. of district about 800.

SPECIAL OPPORTUNITIES.—Fruit growing. Write J. M. Robinson, Summerland, or Sec. Bd. of Trade.

PENTICTON, on Okanagan Lake and C.P.R. Steamer to Okanagan Landing, 63 miles. Dom. Ex. Tel. C.P.R. 2 hotels, telephone, bank, 2 lumber yards, newspaper, 2 livery stables, extensive irrigation works feeding 30,000 acres of fruit lands. Alt. 1,885. Pop. 700.

SPECIAL OPPORTUNITIES.—Lumbering, brick making, farming, dentist, development of power (river having a fall of about 30 ft. to mile). cannery, nursery, wood pipe factory, first-class hotel. Write Sec. Bd. Trade.

PHENIX, on C.P.R. and C.N.R. 30 miles west of Rossland. Hotels, Balmoral \$2.50, Brooklyn \$2.50, and 10 others. Electric light plant, telephone, lumber yard, newspaper, 2 livery stables, bank, important copper mines. Alt. 4,625. Pop. 2,200.



Prince Rupert, B.C.

PORT MOODY, on C.P.R. 2 hotels, bank, shingle mills, 2 planing mills, telephone. Pop. 750.

SPECIAL OPPORTUNITIES —Lumber mill, sash and door factory, wholesale trade, electric light and power, baker, tinsmith. A good water frontage here for factories or elevators. Write Agent C.P.R.

PRINCETON, on forks of Similkameen and Tulameen Rivers. 1 bank, Pres. church, saw mills, coal mine adjoins the town, good copper. Gold, silver and coal mines in vicinity. Present terminus and Div. Pt. of G.W. Ry. Direct route to Spokane, Wash., coast cities and Boundary District. Alt. 1,885. Pop. about 400.

SPECIAL OPPORTUNITIES.—Development of power; river has fall 30 ft. to mile. Lumbering, brick making, farming, lawyer, dentist. Write Mgr. Bk. Commerce.

PRINCE RUPERT, the Pacific terminus of the G.T.P. Ry., 550 miles n. of Vancouver. S.S. lines, C.P.R. and Union S.S. Co., and most lines running north from Vancouver call. Hotels, Prince Rupert Inn, Am. plan, \$2.50 to \$4, and the Annex, European plan, \$1.00 to \$7.50. Special rates by week or month, both operated by the G.T.P., having first-class appointments. Climate good all the year round, is described as ideal between May and September. Harbor facilities are sufficient for the greatest commercial city in the world. The site of a great city has been laid out on scientific lines, provision being made for parks, squares, land for public buildings, wide thoroughfares, business and residential sections. Shawatlans Lake, 6 miles, affords fresh water for a large city. Present industries and buildings include 1 saw mill, 1 dry kiln, 1 sash and door factory, Bank of Commerce, large wharf, warehouses, hotels and boarding houses. Building operations by Nov., 1909, exceeded \$300,000. Pop., Nov., 1909, about 3,500

SPECIAL OPPORTUNITIES.—Mining, quarrying, building, deep sea fishing, coal deposits, marble beds in mountains at back, rich agricultural lands behind mountains, the halibut banks of Queen Charlotte Islands, the richest in the world, within 5 hours. Salmon, clams and herring abound. The first 2,000 acres of Prince Rupert townsite has been sub-divided and lots are now on sale. Write Land Commissioner, Grand Trunk Pacific Ry., at Winnipeg.

REVELSTOKE, on Columbia River, 37 miles from Vancouver, on C.P.R., divisional point. Dom. Ex. Tel. C.P.R. Hotels, Revelstoke, \$3, Victoria \$2.50, Union, Central, Climax,

Queen's, Oriental. 6 churches, railway repair shops, sash and door factory, saw mills, 2 cigar factories, 2 livery stables, 2 newspapers, steam laundry. Seat of County Court for W. Kootenay. Considerable supply trade done with mining districts of Columbia and Kootenay. Tourist centre for fishing and big game. Neighborhood supplies minerals, lumber, pulp wood, brick clay, power (water and electricity 350 h.p. developed). Alt. 1,503. Pop. 3,500.

SPECIAL OPPORTUNITIES.—Machine shop, fruit growing, mining, lumber mills, tannery, commercial college. Write Sec. Bd. Trade.

ROSSLAND, on C.P.R. Okanagan branch. Dom. Ex. Tel. C.P.R. Hotel, Allan \$2.50, and 5 others. 5 churches, 2 schools, 3 banks, newspaper, 2 livery stables, saw mills, flour mill, bottling works, power and electric light company. Centre of mining district of W. Kootenay. Among chief gold mines are War Eagle, Le Roi, Iron Mask, Centre Star. Silver and copper are also found. Alt. 3,461. Pop. 5,000.

SPECIAL OPPORTUNITIES.—Gold, silver and copper mining, small fruits. Write Sec. Bd. Trade.

SLOCAN, mining town on Slocan Lake, in W. Kootenay Dist., on C.P.R., 44 miles n.w. of Nelson. Hotels, Arlington \$2.50, Royal \$2.00, and 2 others. Electric light plant, telephone, livery stable, waterworks. Principal mining town of zinc and silver lead. Alt. 1,777. Pop. about 500.

STEVESTON, on N. & L.I. Ry: 3 churches, 1 school, bank, 15 fish canneries. Pop. about 500, with a large floating population.

SPECIAL OPPORTUNITIES.—Saw mills, iron works, small farms. Write Mgr. Northern Crown Bk.

SUMMERLAND, on C.P.R., 55 miles from Okanagan Landing. Hotel, bank, telephone, electric light, cement block plant, newspaper, livery stable, fruit exchange. A large fruit-producing centre and cattle-raising and mixed farming district. Pop. 1,300. See also under Agricultural Lands.

SPECIAL OPPORTUNITIES.—Canning factory for fruit and vegetables, cement plant to meet demand for irrigation piping and fence posts. Fruit growing: Proved returns show ten acres under fruit surpass 160 acres under grain on the prairies. Poultry farming. Write R. H. Agur, Summerland.

TRAIL, on Columbia River, on C. & W. Ry., 7 miles from

Rosland. Hotels, Crown Point \$2.50, Arlington \$1.50, and 6 others. Bank, telephone, lumber yard, livery stable, newspaper. Consolidated Mining & Smelting Co., Ltd., employ over 600 men, treats silver, lead, copper, ores, manufactures sheet lead, lead pipe and refines silver direct from ore. Supply trade done with surrounding mining companies. Alt. 1,364. Pop. 1,500. Write Sec. Bd. Trade.

VANCOUVER, on Burrard Inlet, incorporated 1886. Terminus of C.P.R. and G.N. Ry. B.C. Electric Co. runs to Steveston, New Westminster, extending to Chilliwack. Mail steamers to Japan, China, Australia and New Zealand. Steamers 3 times daily to and from Victoria and twice to Seattle. Regular communication bi-weekly with Prince Rupert. Daily steamers to Nanaimo and coast-points and to San Francisco every 5 days. 2 S.S. lines to Mexico. Monthly steamers to and from England via Suez Canal, and communication with Atlantic steamers via Tehuantepec route. Industries include lumber and shingles, salmon and halibut, flour milling, foundries and structural steel work, sugar refinery, shipbuilding, etc. Clearing house returns, 1908, \$183,083,446, being fourth place in Canada. Buildings erected, 1908, \$5,950,893; assessment value of property, 1909, \$74,000,000. Scholars on roll, 1909, over 8,000. Pop. 100,000.

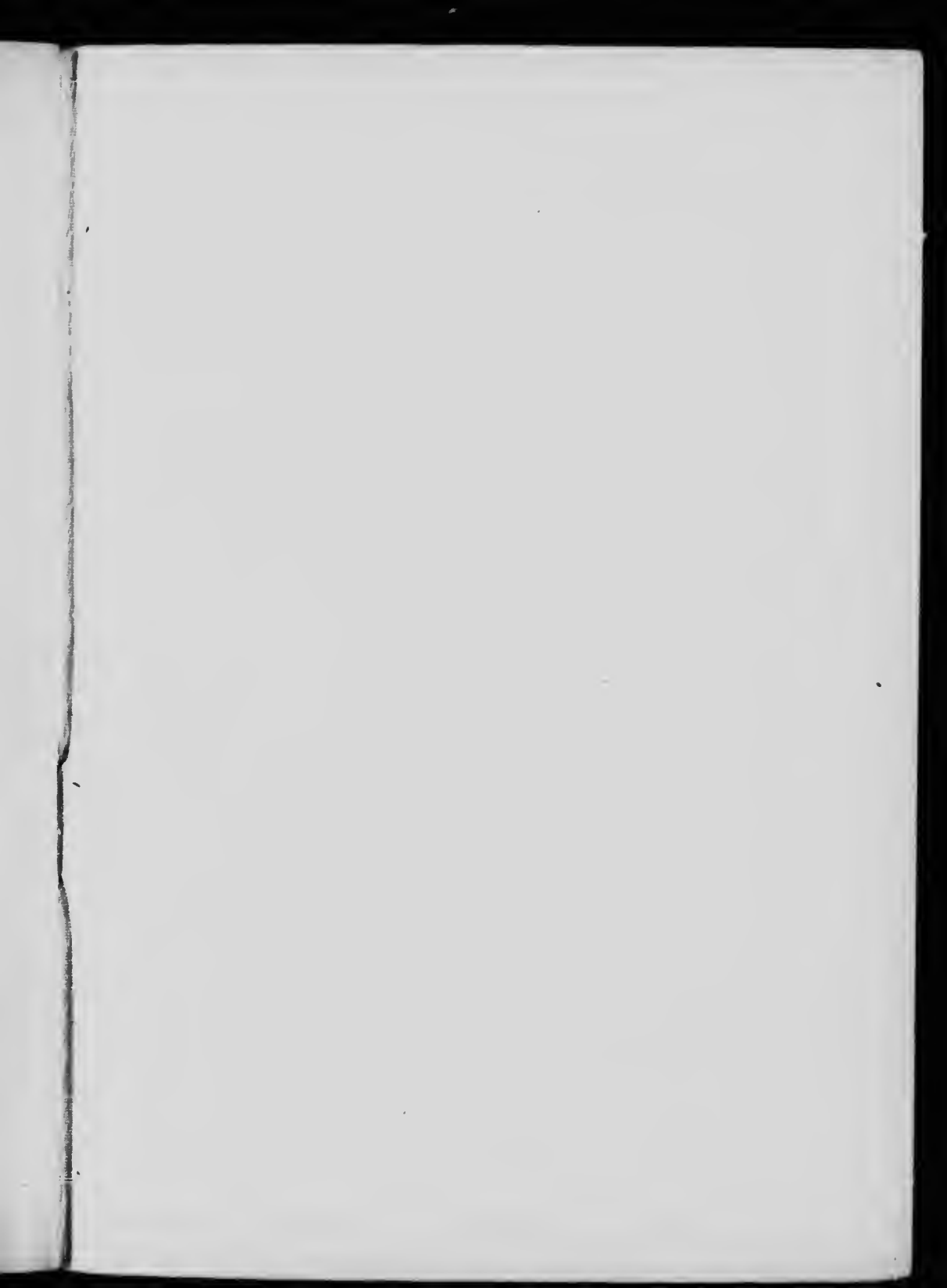
SPECIAL OPPORTUNITIES.—Truck farming, poultry raising (three-quarters of these products now being imported), deep sea fishing, fruit farming, iron industries, flour mills. Vancouver expects large portion of export grain trade from Alberta and Saskatchewan. Write Mgr. Vancouver Information and Tourist Assn., Vancouver, B.C.

VERNON, near Okanagan Lake, on C.P.R. (S. & O. branch), 46 miles from Sicamous Junction. Daily steamboats to southern points. Dom. Ex. Tel. C.P.R. Hotels, Royal, Kallemalka, \$2.50, Coldstream \$1 to \$2, Vernon, Victoria. 2 newspapers, 4 livery stables, flour mills, creamery, 2 banks, court house, library, electric light, 2 saw mills, sewerage and water systems. Centre and supply depot for Okanagan district. An Assize town. Lord Aberdeen owns farm of 13,000 acres here. Alt. 1,255. Pop. 3,000.

VICTORIA (Vancouver Island), capital of British Columbia, founded 1846. Terminus of Esquimalt and Nanaimo Ry. and Victoria and Sidney Ry. Steamers tri-weekly to San Francisco, 870 miles. Daily to points on Puget Sound and Vancouver. Steamers to Alaska, Mexico, and inter-

mediate points, Australasia and the Orient. Wharves, 30 feet of water at low tide. B.C. Ex., N.P. Ex., Dom. Ex., Wells-Fargo Ex. Hotels, Empress (C.P.R.), Dallas, \$3 to \$5. Driard \$2 to \$5, Victoria \$2 to \$4, Dominion \$1.50 to \$2. Neighborhood supplies sea fishing food, timber, coal, iron, copper. Industries, over 50 factories, including biscuits, boats, brass, beer, carriages, furniture, machinery, lumber, soaps, shipbuilding, fish canning, tents, paints, cement. A favorite residential city, famous for its natural beauty. Climate rarely over 75° or below freezing. Value of imports, \$4,971,045; and exports, \$1,401,817, 12 months ending 30th June, 1908. Vessels entered in 12 months, 1907-8, 3,477; cleared, 3,540. Esquimalt Harbor, formerly reserved for the North Pacific fleet of H.M. Royal Navy, is now open to merchant vessels. Pop. 35,000.

SPECIAL OPPORTUNITIES.—Tannery, woollen mills, iron and steel industries, fruit canning and preserving, deep sea fisheries, fruit growing, cooperage, cigar box factory, mining, lumbering, and woodworking machinery factory, brush, broom, nail, glass, match and can factories. Building of modern apartment houses in city and suburbs. Establishment of car shops. Dairying, sheep and horse raising, and mixed farming, automobile manufactory. Write Sec. Bd. Trade, or Vancouver Island Development League.



522

MAIL CARL

If this book contains a personal message, use Two cent stamp.

If name and address of sender only, use One cent stamp.

THIS SIDE FOR THE ADDRESS

