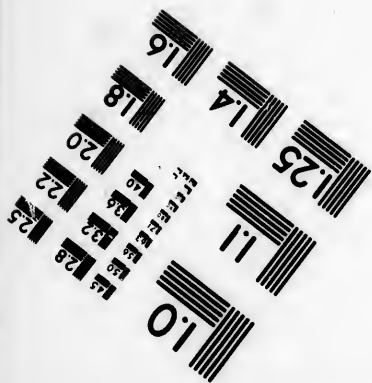
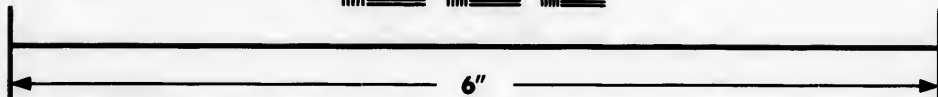
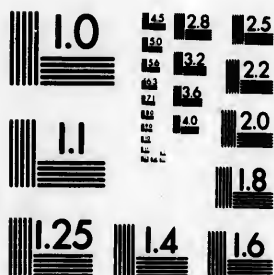


**IMAGE EVALUATION  
TEST TARGET (MT-3)**



**Photographic  
Sciences  
Corporation**

23 WEST MAIN STREET  
WEBSTER, N.Y. 14580  
(716) 872-4503



**CIHM/ICMH  
Microfiche  
Series.**

**CIHM/ICMH  
Collection de  
microfiches.**



**Canadian Institute for Historical Microreproductions / Institut canadien de microreproductions historiques**



**© 1985**

Technical and Bibliographic Notes/Notes techniques et bibliographiques

The Institute has attempted to obtain the best original copy available for filming. Features of this copy which may be bibliographically unique, which may alter any of the images in the reproduction, or which may significantly change the usual method of filming, are checked below.

L'Institut a microfilmé le meilleur exemplaire qu'il lui a été possible de se procurer. Les détails de cet exemplaire qui sont peut-être uniques du point de vue bibliographique, qui peuvent modifier une image reproduite, ou qui peuvent exiger une modification dans la méthode normale de filmage sont indiqués ci-dessous.

- Coloured covers/  
Couverture de couleur
- Covers damaged/  
Couverture endommagée
- Covers restored and/or laminated/  
Couverture restaurée et/ou pelliculée
- Cover title missing/  
Le titre de couverture manque
- Coloured maps/  
Cartes géographiques en couleur
- Coloured ink (i.e. other than blue or black)/  
Encre de couleur (i.e. autre que bleue ou noire)
- Coloured plates and/or illustrations/  
Planches et/ou illustrations en couleur
- Bound with other material/  
Relié avec d'autres documents
- Tight binding may cause shadows or distortion along interior margin/  
La reliure serrée peut causer de l'ombre ou de la distorsion le long de la marge intérieure
- Blank leaves added during restoration may appear within the text. Whenever possible, these have been omitted from filming/  
Il se peut que certaines pages blanches ajoutées lors d'une restauration apparaissent dans le texte, mais, lorsque cela était possible, ces pages n'ont pas été filmées.
- Additional comments: /  
Commentaires supplémentaires: Copy has manuscript annotations.

- Coloured pages/  
Pages de couleur
- Pages damaged/  
Pages endommagées
- Pages restored and/or laminated/  
Pages restaurées et/ou pelliculées
- Pages discoloured, stained or foxed/  
Pages décolorées, tachetées ou piquées
- Pages detached/  
Pages détachées
- Showthrough/  
Transparence
- Quality of print varies/  
Qualité inégale de l'impression
- Includes supplementary material/  
Comprend du matériel supplémentaire
- Only edition available/  
Seule édition disponible
- Pages wholly or partially obscured by errata slips, tissues, etc., have been refilmed to ensure the best possible image/  
Les pages totalement ou partiellement obscurcies par un feuillet d'errata, une pelure, etc., ont été filmées à nouveau de façon à obtenir la meilleure image possible.

This item is filmed at the reduction ratio checked below/  
Ce document est filmé au taux de réduction indiqué ci-dessous.

10X	12X	14X	16X	18X	20X	22X	24X	26X	28X	30X	32X
			✓								

The copy filmed here has been reproduced thanks to the generosity of:

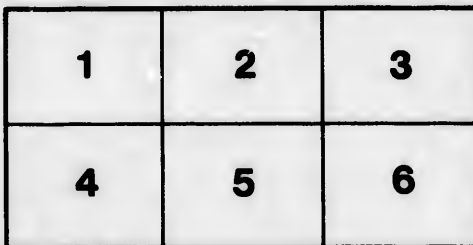
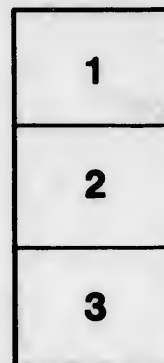
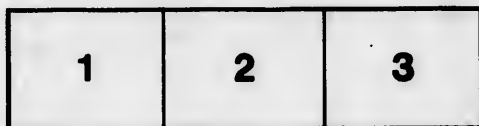
Izaak Walton Killam Memorial Library  
Dalhousie University

The images appearing here are the best quality possible considering the condition and legibility of the original copy and in keeping with the filming contract specifications.

Original copies in printed paper covers are filmed beginning with the front cover and ending on the last page with a printed or illustrated impression, or the back cover when appropriate. All other original copies are filmed beginning on the first page with a printed or illustrated impression, and ending on the last page with a printed or illustrated impression.

The last recorded frame on each microfiche shall contain the symbol  $\rightarrow$  (meaning "CONTINUED"), or the symbol  $\nabla$  (meaning "END"), whichever applies.

Maps, plates, charts, etc., may be filmed at different reduction ratios. Those too large to be entirely included in one exposure are filmed beginning in the upper left hand corner, left to right and top to bottom, as many frames as required. The following diagrams illustrate the method:



L'exemplaire filmé fut reproduit grâce à la générosité de:

Izaak Walton Killam Memorial Library  
Dalhousie University

Les images suivantes ont été reproduites avec le plus grand soin, compte tenu de la condition et de la netteté de l'exemplaire filmé, et en conformité avec les conditions du contrat de filmage.

Les exemplaires originaux dont la couverture en papier est imprimée sont filmés en commençant par le premier plat et en terminant soit par la dernière page qui comporte une empreinte d'impression ou d'illustration, soit par le second plat, selon le cas. Tous les autres exemplaires originaux sont filmés en commençant par la première page qui comporte une empreinte d'impression ou d'illustration et en terminant par la dernière page qui comporte une telle empreinte.

Un des symboles suivants apparaîtra sur la dernière image de chaque microfiche, selon le cas: le symbole  $\rightarrow$  signifie "A SUIVRE", le symbole  $\nabla$  signifie "FIN".

Les cartes, planches, tableaux, etc., peuvent être filmés à des taux de réduction différents. Lorsque le document est trop grand pour être reproduit en un seul cliché, il est filmé à partir de l'angle supérieur gauche, de gauche à droite, et de haut en bas, en prenant le nombre d'images nécessaire. Les diagrammes suivants illustrent la méthode.

**T H E**  
**Nova-Scotia C A L E N D A R,**  
**O R,**  
**A N A L M A N A C K,**

For the Year of the Christian Era, 1777; and from the Creation of the World according to Chronology, 5726, being the FIRST after LEAP YEARS, and in the Seventeenth Year of the Reign of his Majesty King George the Third, consisting of 365 Days.

*Wherein is contained,*

The Feasts and Fasts of the Church, Sun and Moon's rising and setting, Moon's Place, Moon's Age, Apogee & Perigee, Equation of Time, High Water at *Halifax*, Sitzings of the several Courts and Sessions in the Province of *Nova-Scotia*, &c. &c. &c.

Calculated for the Meridian of *Halifax*, in *Nova Scotia*, Lat.  $44^{\circ} 44'$  North; and 4 Hours, 14 Minutes West Long. from London, but will serve without sensible Error for any Part of *Nova Scotia*.

By M E T O N I U S.

HALIFAX: Printed and sold by A. HENRY.

VULGAR NOTES, for the Year 1777.

Dominical Letter - E.	Full Moon before Easter
Golden Number - 11	March 24
Epact - 20	Easter-Sunday March 30
Cycle of the Sun - 22	Rogation-Sund. May 4
Roman Indiction - 10	Ascension Day, May 8
Sundays after Epiph. - 2	Whitsunday, May 18
Septuagesima Sunday	Sundays after Trinity, 26
January - 26	Advent Sunday, Nov. 30
Ash Wednesday Feb. - 12	

*A moderate Caution, against excessive DRINKING.*

**O**F all the Plagues, by which Mankind are curst;  
 A Throat that's never satisfy'd's the worst.  
 What! Alm'nack Maker preach? Thou view the Pole,  
 "We will indulge the Pleasures of the Bowl;"  
 Go on vain Fool, if lust thy Will can bribe,  
 To scorn the Rules that Reason does prescribe;  
 All Nature's Stores, cannot thy Thirst assuage,  
 Thou Prodigal of Life, thou 'st mortgag'd thy old Age:  
 Thy Health will fail, thy Joys will end in Sorrow;  
 To live a Beast to-Day, thou'lt die a Fool To-morrow.

*To make Raisin Wine.*

**P**UT two hundred weight of raisins with the stalks, into a hoghead, and fill it almost full with spring water; let them steep about twelve days, frequently stirring them about, and after pouring the juice off press the raisins. Put all the liquor together in a very clean vessel. You will find it his for some time, and when the noise ceases it must be stopped close, and stand for six or seven months; and then if it proves fine and clear, rack it off into another vessel; stop it up, and let it remain twelve or fourteen weeks longer; then bottle it off.

*To Make Morella wine.*

Take two gallons of white wine; and twenty pounds of Morella cherries; take away the stalks, and so brase them that the stones may be broken: press the juice into the wine; and add of mace, cinnamon, and nutmeg, an ounce of each; tied in a bag grossly bruised, and hang it in the wine when you have put it up in a cask.



The Names and Characters of the Twelve Signs. A

Aries,

Taurus.

Cancer.

Virgo.

Scorpio.

Capricorn



Gemini.

Leo.

Libra.

Sagittarius

Aquarius.

Pisces.

from my Profession; and this Place is called after my Name. Apollo asked him what Effect this prepared Water had upon Fishes, and was told, that such as was bred in it could not be fryed or boiled with common Fire or Water; and therefore (continued he) the Doctor has a Fish-pond higher up the Hill which is filled with this Water; this prevents its being robbed, for if the Fish is stolen they cannot be dressed; but said Apollo, they may steal the Water too. — Poor Aquarius was dumb, and slunk off to the Doctor with his two Resorts. — Apollo drove forward, and passed by the aforesaid Fish-pond, which Place he named Pisces, or the Fishes, and immediately found himself at the Place where he began his Journey.

In those Days there were no Captain Cooks to discover unknown Lands, and spread Poxes among the the Inhabitants and the People of this Island were so ignorant, as to suppose their little Spot. The whole Extent of Earth: This Journey therefore was accounted worthy of immortal Honour, so they called the Sun Apollo, and the Portions of the Zodiac these Names we have already mentioned.

Province of *Nova Scotia*,

Governor, \_\_\_\_\_

Lieutenant-Governor,

The Honorable **MARIOT ARBUTHNOT, Esq;**

*His Majesty's Council.*

The Honorable **Mich<sup>l</sup> Franklin, Esq;**

\_\_\_\_\_ **Charles Morris,**

\_\_\_\_\_ **Rich<sup>d</sup> Bulkeley,**

\_\_\_\_\_ **Henry Newton,**

\_\_\_\_\_ **Jonath. Binney,**

\_\_\_\_\_ **Jos. Gorham,**

The Honorable

\_\_\_\_\_ **Arth. Gould,**

\_\_\_\_\_ **John Butler,**

\_\_\_\_\_ **James Burrow, &**

\_\_\_\_\_ **J. Creighton, Esqrs.**

**MEMBERS of the House of Assembly.**

County of *Halifax*, **William Nesbitt, and W. H. South, Esqrs;** Mr.

**John Philipps and James Brenton, Esq;**

County of *Annapolis*, **Wm. Shaw and Henry Evans, Esqrs.**

County of *Lawsonburg*, **Otho Wm. Schwartz and John Newton, Esqrs,**

King's County, **H. D. Denton and W. Tonge, Esqrs.**

County of *Quebec*, **Jorham Gay, Esq;** and Mr. **Tho. Dickson,**

County's County, **Wm. Smith and Simpson Perkins, Esqrs.**

County of *Antigonish*, **Charles Morris and James Simonds, Esqrs.**

County of *Stafford*, **Thomas Bridge and Joseph Fallbanks, Esqrs.**

County of *Antigonish*, **Mr. Charles Dickson.**

County of *Stafford*, **Mr. Sam. Acobibald.**

County of *Halifax*, **L. Morrison, Esq;**

County of *Annapolis*, **Mr. Ph. Lovatt, ju.**

County of *Quebec*, **Chas. Prince, Esq;**

County of *Lawsonburg*, **Ph. Knaut, Esq;**

County of *Halifax*, **Jos. Pardo, Esq;**

County of *Halifax*, **Jn. Chipman, Esq;**

County of *Stafford*, **Jos. Northup, Esq;**

County of *Stafford*, **J. Deschamps, Esq;**

County of *Halifax*, **Mr. H. King.**

County of *Stafford*, **Mr. R. Foster.**

County of *Halifax*, **Mr. Tho. Cochran.**

County of *Stafford*, **Mr. Monk, J. Esq;**

County of *Halifax*, **Mr. Barrington, John-Willis, Esq;**

County of *Halifax*, **Honorable Richard Bulkeley, Esq;**

County of *Halifax*, **Hon. Charles Morris, Esq;**

County of *Halifax*, **William Nesbitt, Esq;**

County of *Halifax*, **James Brenton, Esq;**

County of *Halifax*, **Benjamin Grass, Esq;**

County of *Halifax*, **Hon. Arthur Gould, Esq;**

County of *Halifax*, **John Ferguson, Esq;**

County of *Halifax*, **W. Tonge, Esq;**

County of *Halifax*, **John Sewall, Esq;**

County of *Halifax*, **James Brenton, Esq;**

**Provincial Court of ADMIRALTY.**

County of *Halifax*, **Richard Bulkeley, Esq;** Judge.

County of *Halifax*, **James Justor Esq;** Registrar.

County of *Halifax*, **H. Monk, Marshall.**

**His Majesty's Supreme Court for the Province,**

Honorable **Charles Morris, Esq;** Chief Justice,

**John Deschamps, Esq;** Justice,



*Genealogical* LIST of the ROYAL FAMILY of GREAT BRITAIN.

**G**EOURGE III. born June 4; 1738; proclaimed King of Great-Britain, France, and Ireland, and Elector of Hanover, October 26. 1765; and married Sept. 8, 1761, to the Princess Charlotte of Meckleburgh Strelitz, born May 19, 1744. Crowned Sept. 22, 1761; and now have issue,

1. G. Aug. Fred. Prince of Wales, born Aug. 12, 1762. K. G.
2. Prince Frederick; born Aug 16, 1763; Elected Bishop of Osnabrug. Feb. 27, 1764, K. G. K. B.
3. Prince William Henry, born Aug. 21, 1765 K. T.
4. Princess Charlotte, Princess Royal of England, born Sept. 29, 1766.
5. Prince Edward, born Nov. 2, 1767;
6. Princess Augusta Sophia, born November 8, 1768.
7. Princess Elizabeth, born May 22, 1770.
8. Prince Earnest Augustus, born June 5, 1771.
9. Prince Augustus Frederick, born Jan. 27, 1773.
10. Prince Adolphus Frederick, born Feb. 24, 1774.

Brothers and Sisters to his Majesty:

1. Her Royal Highness Augusta, born Aug. 11, 1737; married to the Hereditary Prince of Brunswick Lunenburg, Jan. 16, 1764.
2. Pr. William Henry, Duke of Gloucester, born Nov. 25, 1743.
3. Prince Henry Frederick, D. of Camberland, born Nov. 7, 1745. His late Majesty's Issue by Queen Caroline; now living.
- Princess Amelia Sophia, born June 10, 1711.

A new and correct List of the ROYAL NAVY of Great-Britain, with the Names of all the Commanders of all the Ships which are now in Commission, and the different Stations on which they are now employed.

AT DEPTFORD.

*Guns Sixth Rate.*  
20 **T**HERPSICHORE!  
Sloop.

14 Saltash.

AT WOOLWICH.

*Third Rate.*

74 Thunderer

*Fifth Rate*

40 Ludlow Castle

24 Minerva

*Sixth Rate*

20 Nightingale

24 Unicorn.

SLOOPs

14 Albany

16 Favourite

AT CHATHAM

*First Rate*

100 Victory

*Second Rates*

90 London

90 Namur

90 Prince George

*Third Rates*

64 St. Antonio

64 Ardent, G. Capt. Geo. Middl

64 Augusta

74 Bellona

70 Buckingham

64 Captain

74 Cornwall

74 Mars, G. Hon. Capt. George

Falconer

70 Northumberland.

- 70 Oxford
- 74 Ránúllis, G. Geo. Mackenzie
- Elq; Commodore, ——— Capt.
- 64 Revenge, Church Ship
- 74 Rebutt
- 64 Trident
- 74 Triumph

*Fourth Rate.*

- 60 Dunkirk
- 60 Pembroke

*Fifth Rates.*

- 32 Amazon
- 32 Ambuscade
- 32 Diamond
- 32 Diana
- 32 Flora
- 32 Montreal
- 32 Québec
- 44 Rainbow
- 34 Repulse
- 32 Richmond
- 32 Stag.

*Sloop.*

- 10 Bonnetta

*SHEERNESS*

*Third Rates.*

- 74 Canada
- 74 Invincible
- 74 Ruffell
- 74 Suffolk

*Sixth Rates.*

- 24 Rye
- 20 Success

*At the NORE.*

*Fourth Rate.*

- 60 Conquistadore, G. Captain James Chads

*IN the RIVER*

*Fifth Rate*

- 36 Brilliant

*IN the TOWNS*

*Fifth Rate*

- 32 Arethusa, Capt Digby Dent

*At PORTSMOUTH*

*First Rate*

- 100 Britannia

*Second Rates*

- 90 Barfleur, G. Vice Admiral Sir

- James Douglas, Captain Sir
- Edward Vernon

- 90 Neptune
- 90 Princess Royal
- 90 Sandwich

*Third Rates.*

- 74 Aix
- 64 St Albans
- 80 Princess Amelia
- 74 Arrogant
- 74 Berwick
- 74 Centaur, G. Captain W. Briereton
- 74 Courageux
- 74 Cumberland
- 64 Defiance
- 74 Dragon
- 74 Egmont, G. Capt. J Elphinstone
- 74 Elizabeth
- 64 Essex
- 64 Europa
- 64 Exeter, G. Capt. Mat. Moore
- 74 Grafton
- 74 Hector
- 74 Lenox
- 64 Lyon
- 74 Magnificent
- 74 Marlborough, G. Capt. Sam. Hood
- 64 Modeste
- 74 Monarch
- 74 Résolution, G. Captain Sir Chaloner Ogle
- 74 Royal Oak, G. Capt. Joseph Deane
- 74 Superbe
- 74 Terrible
- 74 Valiant
- 74 Vigilant
- 74 Warspite
- 84 Royal William
- 64 Worcester, G. Capt. Mark Robinfon

*Fourth Rates.*

- 74 Achilles
- 50 Assistance
- 50 Colchester
- 60 Dreadnought
- 60 Firme
- 60 Launceston

*Justices of the Inferior Courts of Common Pleas.*

County of Halifax, H. Newton, Geo. Cottam, Jonath. Blaney,  
James Burrow, and Benja. Green, Esqrs;

County of Annapolis, Jof. Wennett, Henry Evans and Thomas  
Williams, Esqrs;

County of Lunenburg, John Creighton, L. C. Rudolph, Joseph  
Pernette, D. C. Jensen and Jonath. Prescott, Esqrs,

King's County, H. D. Denson, John Burbridge, Samuel Willoughby  
and Labens Harris, Esqrs;

County of Cumberland, Edward Barren, James Law and Samuel  
Wethered, Esqrs,

Queen's County, Elisha Freeman, Simpson Perkins and Zach. Harding,  
Esquires.

County of Breton, George Cottam, Gregory Townsend and Will-  
iam Russell, Esqrs;

Townships of Yarmouth, Barrington, and Argyle in Queen's County,  
John Crawley and John Bernard, Esqs.

*Justices of the Peace in the County of Halifax.*

John Burbridge, Benj. Green, John Cunningham, Geo. Cottam,  
John Newton, W. Tange, Tho. Procter, Tho. Burrow,

Russell, Wm. Phipps, J. F. W. Desbarre, Geo. Cottam,  
Jm. George Smith, Thos. Barr, Jof. Gray, G. W. Cottam,

George Deschamps, Daniel Cunningham,  
and F. Green, Esqrs.

County of Annapolis, William Nesbit, Joseph Wennett, Henry  
Evans, Henry Monro, John Hall, Joseph Patten, Thomas Law,

Thomas Williams, Christopher Prince, Esqrs,  
For the Township of Wilton, M. Richardson, Esq.

County of Lunenburg, L. C. Rudolph, D. C. Jensen, Joseph  
Prescott, Joseph Pernette, D. C. Jensen, Ph. Knaut, and Henry  
Ferguson, Esqrs,

King's County, Wm. Nesbit, H. D. Denson, Wm. Tange, John  
Burbridge, Charles Morris, junior, Elisha Burrow, Samuel  
Willoughby, Joseph Bailey, Labens Harris, Handley Chipman,

William Bell, Nathan Denson, Joseph Gray, Charles Dickson,  
Joseph Pierce and Joseph Northup, Esqrs.

County of Cumberland, William Allen, Leosci Deaks, Edward  
Barron, M. Desidermier, Robt. Coit, James Law, Charles  
Dickson, Sam. Wethered, Christopher Harper and S. Black, Esqrs.

Queen's County, Elisha Freeman, Simpson Perkins, John Crawley, John  
Cook, Sam. Freeman, Kenald McKennon, Philip Barlow, Geo.  
Green, Nathan Tupper, Wm. Johnson, Zach. Harding, L. C.

King and Archelays Smith, Esqs.

County of Seabury, James Simmonds, James White, Jm. Pearty,  
Thomas Procter, Elisha Burrow, Jervis Say, and John  
Bacon, Esqrs.

For the Townships of Onslow, Truro and Lunenburg,  
David Archibald, John Morrison, James Fulton, James Tall,  
John Maben and Josias Lough, Esqrs.

**JUDGES of the Court for the Probate of Wills,**

His Honor the Lieutenant Governor, Ordinary in Chief,  
Charles Machin, Junior, Register:

County of Annapolis, Joseph Wenniett, Esq;

King's County, Isaac Deschamps, Esq;

County of Lunenburg, John Creighton, Esq;

County of Sunbury, James Simmonds, Esq;

Queen's County, Eliza Freeman, Esq;

County of Cumberland,

} Judges.

**LIST of the Officers of His Majesty's Customs.**

Honorable Henry Newton, Esq; Collector.

James Burrow, Esq; Comptroller.

John Newton Esq; Surveyor and Searcher.

Mr. Lewis Piers, Gauger.

**Collectors of the Duties of Impost and Excise.**

*Hatfield*, John Newton and Arthur Goold, Esqrs.

*Annapolis*, Joseph Wenniett, Esq;

*Lunenburg*, Christopher Jessen, Esq;

*King's County*, and *Windsor*, H. D. Denton, Esq;

*Cumberland*, James Lay, Esq;

*Queen's County*, William Johnsons, Esq;

*St. John's River*,

**COURTS in Nova-Scotia are held.**

*Supreme Court at HALIFAX*, The last Tuesday of January; The First Tuesday of April; The Second Tuesday July; and the Second Tuesday of October.

*At Annapolis*, The Third Tuesday of May and Third Tuesday of September.

*At King's County*, The Second Tuesday of May, and Fourth Tuesday of September.

*At Cumberland*, The First Tuesday of June and First Tuesday of September.

**INFERIOR COURTS and General Sessions of the Peace.**

*For the County of Annapolis*, At Annapolis, The First Tuesday of April and November.

*For the County of Lunenburg*, At Lunenburg the Second Tuesday of April and October.

*For King's County*, At Horton, The First Tuesday of June and October.

*For the County of Cumberland*, At Cumberland, The last Tuesday of June and last Tuesday of October.

*For Queen's County*, At Liverpool, The Second Tues.



I. JANUARY, hath XXXI Days. 1771

- ☾ Last Quarter 2d Day, 11h. 30m. Forenoon.
- New Moon 9th Day, 1h 30m. Afternoon.
- ☽ First Quarter 16th Day, 5h. 30m. Morning.
- Full Moon 24th Day, 2h. 35m. Morning.

M	W	Remarkable Days, Weather, &c.	r. °	′	″	D's Place	r. °	′	″	F	S
D	D		H.	M.	H.		H.	M.	H.		
1	4	CIRCUMCISION.	7	40	5	Reins.	11	50	12	1	
2	5	Clock fast 4m. 34f.	7	39	5	13	morn.				
3	6	Snow about this time.	7	39	5	25	0	50	1	5	40
4	7	then Fair. ● Apog.	7	38	5	secret.	1	48	2	5	35
5	E	SUND. past Circum.	7	38	5	23	2	50	3	4	2
6	2	EPIPHANY.	7	37	5	high.	3	56	4	9	6
7	3	Pleasant Weather	7	37	5	21	5	5	5	5	5
8	4	Clock fast 7m. 16f.	7	36	5	knees	6	14	6	2	6
9	5	if not too cold.	7	35	5	20	2	set.	7	2	7
10	6	A Winter like Storm	7	34	5	legs.	6	10	8	5	5
11	7	and much falling	7	33	5	19	7	18	9	10	10
12	E	1st. SUND. after EPI.	7	32	5	feet	8	28	9	5	5
13	2	weather	7	31	5	20	9	39	10	20	20
14	3	about this time.	7	30	5	head	10	45	11	10	10
15	4	Clock fast 10m 5f.	7	29	5	18	11	50	11	5	5
16	5	High winds, with	7	28	5	neck.	morn.		12	4	5
17	6	Rain or	7	27	5	16	0	53	1	30	30
18	7	● Perige Snow.	7	26	5	29	2	0	2	2	2
19	E	2d after EPIPH.	7	25	5	arms.	3	4	3	20	20
20	2	Cl. fast 11m. 42f.	7	24	5	22	3	58	4	30	30
21	3	Great signs of more	7	23	5	breast	4	56	5	31	31
22	4	Snow, but may prove	7	22	5	16	5	53	6	27	27
23	5	rain & southerly	7	21	5	28	6	54	7	20	20
24	6	Cl. f. 12m. 45f. warm	7	20	5	heart.	7	25	8	10	10
25	7	Conv. of St. PAUL.	7	19	5	22	6	28	9	10	10
26	E	SEPTUAGES. Sund.	7	18	5	belly.	7	25	10	10	10
27	2	winds for the Season.	7	17	5	16	8	20	11	0	0
28	3	Fair and Cold,	7	16	5	29	9	16	11	50	50
29	4		7	15	5	reins.	10	13	12	40	40
30	5	Clock fast 13m. 46f.	7	14	5	22	11	13	1	20	20
31	6	K. CHAR. 1st. Mar.	7	13	5	secret	morn.		2	10	10



# II. FEBRUARY hath XXVII Days, 1777.

- ▷ Last Quarter 18 Day, 4h. 25m. Morning.
- New Moon 28 Day, 1h. 40m. Morning.
- ▷ First Quarter 14th Day, 6h. 30m. Night.
- Full Moon 22d Day, 9h. 30m. Night.

M	W	Remarkable Days, Weather, &c.	r.	©	s.	Y's	r.	©	s.	R Sea.
D.	D.		N.	M.	H.	Place.	H.	M.	H.	M.
1	7	Warm for the ☉ Ap.	7	12	5	18	0	16	3	0
2	8	SEXAG. Pur. V. Ma.	7	11	5	thighs	1	24	3	50
3	9	Cl. f. 14m. 20f. soft.	7	10	5	14	2	30	4	40
4	10	None perhaps violent	7	9	5	28	3	33	5	30
5	11	winds. Falling out-	7	8	5	knees	4	35	6	28
6	12	ther about these days.	7	6	5	28	5	36	7	29
7	13	cl. f. 14m. 44. f. clears	7	5	5	legs.	6	24	8	30
8	14	of cold.	7	3	5	28	▷ sets	9	15	
9	15	QUINQUA. More fal-	7	1	5	feet.	6	51	10	0
10	16	ling weather this change	6	59	6	28	8	3	10	48
11	17	SHROVE TUESDAY.	6	57	6	head.	9	14	11	36
12	18	ASH WEDNESDAY.	6	55	6	27	10	24	13	24
13	19	clo. fast 14m. 47f.	6	53	6	neck.	11	34	1	12
14	20	VALENTINE, Bish.	6	51	6	24	morn.	2	0	
15	21	☉ Petige. Fair but	6	49	6	arms.	0	37	2	48
16	22	ill in LENT. the tra-	6	48	6	18	1	41	3	36
17	23	veller must expect to be	6	47	6	breast	2	36	4	23
18	24	cl. f. 14. 28. attack'd	6	46	6	14	3	38	5	8
19	25	with a sharp North	6	45	6	24	4	28	5	53
20	26	wester.	6	44	6	heart.	5	13	6	38
21	27	More moderate.	9	42	6	18	5	54	7	23
22	28	clock fast 14m.	6	40	6	21	▷ rise	8	30	
23	29	ed in LENT.	6	38	6	belly.	6	3	9	17
24	30	St. MATTHIAS.	6	36	6	23	6	57	10	3
25	31	Clear and cold	6	34	6	Reins	7	53	10	50
26	32	clock fast 13m. 22f.	6	33	6	18	8	47	11	36
27	33		6	32	6	secret	9	43	12	22
28	34	☉ Ap. ec.	6	31	6	14	10	46	1	9

Jan<sup>y</sup> 16. 1777. Wm Church paid me  
on acc<sup>t</sup> of James Rudolph. 5. 10.

- 77  
 Jan. 1. W. fine mild weather.  
 2 Th: rain & sleet all day Ev. W. small snow & fast  
 3 Fr. very cold wind WNW slick air  
 4 S. cold & windy at W. fair  
 5 S. cold squally weather with snow at times WNW  
 6 M. more moderate but showy air  
 7 Tu: Ditto wind variable  
 8 W. clear & cold N.  
 9 Th: snowy air & cloudy. an eclipse of the sun from about 11 to  
 10 Fr. fair but sharp cold afternoon moderate  
 11 S. fair but cold & windy } Ev: snow, & at 10  
 } began to blow hard from S. to W.  
 12 S. fair morning but cold stormy Ev:  
 13 M. cold & clear  
 14 Fr. D° - high wind N. to W.  
 15 W. D° - S° Ev: snow.  
 16 Th: pleasant mild weather  
 17 Fr. mild but threatening  
 18 S. D° - Ev: snow  
 19 S. squally, wind variable with snow at times.  
 20 M. snow continues till 10 then fair  
 21 Th. snowy at times all day Ev: snowy  
 22 W. Ditto  
 23 Th: fair but cold. W.  
 24 Fr. cloudy threatening weather in the night wind S. & heavy rain & stormy -  
 25 S. storm continues with rain.  
 26 S. rain heavy & fast wind E. till noon. fat out at 2  
 27 M. arrived in town at 3. fine morning.  
 28 T. Snowy  
 29 W.  
 30 Th: fine day  
 31 Fr. snow in plenty.

hall  
st  
ik air  
how  
air  
of  
odmas  
from  
y Sw:  
with  
his  
the  
bill  
e



HALIFAX HARBOUR.

INDIAN HARBOUR.



# III. MARCH hath XXXI Days, 1777

- ☾ Last Quarter 2d Day, 6h. 40m. Afternoon.
- ☉ New Moon 9th Day, 11h. 30m. Forenoon.
- ☽ First Quarter 16th Day, 10h. 30m. Morning.
- Full Moon 24th Day, 3h. 29m. Afternoon.

M	W	Remarkable Days.	r.	o	l.	D's	r.	h.	l.	h.	m.
D	D	Weather, &c.	H.	M.	H.	Place.	H.	M.	H.	M.	M.
1	7	St. DAVID. Much	6	30	6	26	11	54	1	56	
2	E	3d in LENT. rain or	6	20	6	high	morn.	2	42		
3	2	clo. f. 12m. 23f. few	6	28	6	22	3	2	3	29	
4	3	Then clears off	6	26	6	knees	2	7	4	15	
5	4	pleasant for the season.	6	24	6	20	2	16	5	2	
6	5	Searching winds.	6	22	6	legs.	4	25	5	49	
7	6	clock fast 11m. 26f.	6	20	6	20	5	15	6	26	
8	7		6	19	6	fact.	6	9	7	28	
9	E	4th in LENT.	6	17	6	20	D feet	2	30		
10	2	Mors	6	15	6	head.	7	2	9	20	
11	3	clock fast 10m. 24f.	6	14	6	20	8	11	10	10	
12	4	falling weather with	6	13	6	beck.	9	20	11	0	
13	5		6	11	6	20	10	20	11	50	
14	6	☉ Peri. Searching	6	9	6	arms.	12	29	12	40	
15	7	cl. f. 9m. 15f. winds.	6	8	6	14	morn.	1	30		
16	E	5th in LENT.	6	7	6	26	0	33	2	25	
17	2	St. PATRICK.	6	5	6	breast	1	30	3	10	
18	3	Stamp-Act rep. 1766.	6	4	6	20	2	18	3	55	
19	4	A heavy storm	6	2	6	heart.	2	56	4	40	
20	5	clo. fast 7m. 46f.	6	0	6	14	3	32	5	25	
21	6	about these Days.	5	58	7	26	4	8	6	10	
22	7		5	57	7	belly.	4	39	6	55	
23	E	6th in LENT.	5	56	7	20	5	5	7	40	
24	2		5	54	7	arms.	6	56	8	30	
25	3	LADY DAY.	5	53	7	14	6	58	9	20	
26	4	clock fast 5m. 54f.	5	53	7	27	7	52	10	10	
27	5	Rain cold and search-	5	50	7	secret	8	57	11	0	
28	6	☉ Apoge.	5	48	7	23	10	61	11	50	
29	7	ing winds.	5	46	7	thigh	11	15	12	40	
30	E	EASTER SUNDAY.	5	45	7	19	morn.	1	30		
31	2	clock fast 4m. 20f.	5	43	7	knees	0	20	2	20	

7  
7  
8  
9  
10  
11  
12  
13  
14  
15  
16  
17  
18  
19  
20  
21  
22  
23  
24  
25  
26  
27  
28  
29  
30  
31

IV. APRIL hath XXX Days. 1777.

- ☾ East Quarter 1st Day, 4h. 26m. Morning.
- New Moon 7th Day, 8h. 30m. Night.
- ☽ First Quarter 15th Day, 4h. 15m. Morning.
- Full Moon 23d Day, 4h. 15m. Morning.
- ☾ Last Quarter 30th Day, 11h. 30m. Forenoon.

M	W	Markable Days; Weather, &c.	☉	☽	☽	☽	☽
D	D		H	M	Place.	H.	M.
1	3	Strong South winds	5	42	7 16	1	25
2	4	and heavy showers.	5	40	7 legs.	2	26
3	5	clock fast 3m. 25f.	5	38	7 14	3	16
4	6	St. AMBROSE.	5	37	7 29	3	59
5	7		5	36	7 feet.	4	32
6	E	1st SUN. past EASTER	5	34	7 29	5	2
7	2	show of rain, and	5	32	7 head.	2	sets
8	3	clo. fast im. 55f.	5	31	7 28	7	17
9	4	of course dirty	5	29	7 neck.	8	26
10	5	travelling.	5	27	7 26	9	35
11	6	● Perige.	5	26	7 arms.	10	38
12	7		5	25	7 22	11	38
13	E	2d past EASTER.	5	23	7 breast	morn.	2
14	2	clo. fast am. 26f. Fair	5	21	7 18	0	33
15	3	Sun & Clock together.	5	20	7 29	1	23
16	4	and pleasant weather,	5	18	7 heart	2	4
17	5	but soon comes on	5	17	7 22	2	39
18	6	blasting winds &	5	16	7 belly.	3	6
19	7	heavy rains.	5	14	7 16	3	34
20	E	3d SUN. past EASTER	5	13	7 28	4	5
21	2	clock slow im. 24f.	5	11	7 reins.	4	34
22	3		5	9	7 22	5	3
23	4	St. GEORGE.	5	8	7 secret	C. rise	8
24	5	Pleasant weather.	5	7	7 19	8	7
25	6	St. MARK, Eva. ● Ap.	5	5	7 thighs	9	16
26	7	clo. slow 2m. 23f.	5	4	7 15	10	26
27	E	4th p. EAS. V.C. 1746.	5	2	7 29	11	25
28	2	Perhaps rain about	5	1	7 knees	morn.	12
29	3	these Days.	5	0	7 26	9	33
30	4	clock slow 3m.	4	59	8 legs.	1	23

M	W	D
1		
2		
3		
4		
5		
6		
7		
8		
9		
10		
11		
12		
13		
14		
15		
16		
17		
18		
19		
20		
21		
22		
23		
24		
25		
26		
27		
28		
29		
30		
31		

V. M A Y, hath XXXI Days 1777.

- New Moon 7th Day, 6h. 15m. Morning.
- ☽ First Quarter 14th Day, 10h. 15m. Night.
- Full Moon 22d Day, 6h. 15m. Afternoon.
- ☾ Last Quarter 29th Day, 5h. 20m. Afternoon.

M.W.	Remarkable Days, Weather, &c.	r.	☉	s.	Place.	r.	☽	F. Sed
D.D.		H	M	h	D's	H	M	H M.
1	5 St. PHILIP & JAMES.	4	57	8	24	2	3	3 10
2	6 Warm with pleasant	4	56	8	feet.	2	39	4 0
3	7 showers.	4	55	8	23	3	6	4 50
4	E ROSA. SUN. St John.	4	54	8	head.	3	40	5 40
5	2 clo. flow 3m. 36f.	4	52	8	22	4	11	6 35
6	3	4	51	8	neck	4	42	7 38
7	4 Fine growing weather	4	50	8	20	☽	feet.	8 30
8	5 Ascens. DAY. ● Per.	4	48	8	arms.	8	40	9 25
9	6 Pleasant showers.	4	47	8	18	9	43	10 12
10	7 clock flow 3m. 58f.	4	46	8	breast	10	39	10 59
11	E 18 past Ascension.	4	45	8	12	11	36	11 46
12	2 Now warm,	4	44	8	25	norn.	12	33
13	3 <del>Warm</del> N. but a cold	4	42	8	heart	0	20	1 29
14	4 St. ASPINQUID. May	4	41	8	19	0	51	2 7
15	5 cl. fl. 4m. 5f. storm	4	40	8	belly	1	20	2 54
16	6 Q. CHARLOTTE bor.	4	39	8	12	1	47	3 41
17	7 may not be far (1744.	4	38	8	24	2	14	4 28
18	E WHITSUNDAY.	4	37	8	reins.	2	41	5 15
19	2 off.	4	36	8	18	3	8	6 2
20	3 clo. fl. 3. 58f. R	4	35	8	secret	3	35	6 49
21	4	4	34	8	15	4	3	7 36
22	5 ● Apogee.	4	33	8	29	☽	rise	8 23
23	6	4	32	8	high	8	13	9 13
24	7 Rain	4	31	8	24	9	17	10 3
25	E TRINITY SUNDAY.	4	30	8	knee	10	21	10 53
26	2 clock flow 3m. 31f.	4	29	8	23	11	22	11 43
27	3 about these	4	28	8	legs.	norn.	12	30
28	4 days.	4	27	8	21	0	20	1 23
29	5 K. CHAR. 2d. Reitor,	4	27	8	feet.	0	50	2 13
30	6	4	26	8	19	1	17	3 3
31	7 cl. fl. 2m. 55f.	4	25	8	head.	1	45	3 53

# VI. JUNE, hath XXX Days, 1777.

- New Moon 5th Day, 5h. 30m. Afternoon.
- ☽ First Quarter 13th Day, 4h. 25m. Afternoon.
- Full Moon 21st Day, 4h. 30m. Morning.
- ☾ Last Quarter 27th Day, 10h. 20m. Night.

M. W.	Remarkable Days,	r. ☉ s.	D's r.	● s.	F. Sea
D. D.	Weather, &c.	H. M. H.	Place	H. M.	H. M.
1 E	1st past TRINITY.	4 24 8	17	2 16	4 43
2 2	Great winds and signs	4 24 8	neck.	2 47	5 33
3 3	clock flow 2m. 29f.	4 23 8	16	3 17	6 23
4 4	R! Gen. III. b. 1738.	4 23 8	29	3 48	7 13
5 5	of thunder	4 22 8	arms.	(sett	8 3
6 6	● Perige	4 21 8	25	8 24	8 53
7 7	Rain or hail, and	4 21 8	breast	9 20	9 44
8 8	winds.	4 20 8	21	10 7	10 35
9 2	2d Sun. p. Trinity,	4 20 8	heart.	10 47	11 23
10 3	clock flow 1m. 35f.	4 20 8	14	11 20	12 13
11 4	Very pleasant	4 19 8	27	11 50	1 3
12 5	growing	4 19 8	belly.	morn.	1 53
13 6	weather.	4 19 8	20	0 17	2 43
14 7	clock flow om. 26f.	4 19 8	veins.	0 44	3 33
15 E	3d past TRINITY.	4 18 8	15	1 11	4 21
16 2	Sun & clock together.	4 18 8	27	1 39	5 10
17 3		4 18 8	secret	2 7	6 0
18 4	Perhaps stormy	4 18 8	23	2 36	6 48
19 5	● Apo. about these	4 18 8	high	3 6	7 36
20 6	days.	4 18 8	20	3 41	8 0
21 7		4 18 8	knees.	D. rise	8 40
22 E	4th past TRINITY.	4 18 8	19	9 0	9 30
23 2	afterward	4 18 8	legs.	9 46	10 20
24 3	St. JOHN Bapt.	4 18 8	18	10 42	11 10
25 4	pleasant growing	4 18 8	feet.	11 10	12 0
26 5	clo. f. 2m. 7f.	4 18 8	16	11 38	12 50
27 6	weather.	4 18 8	head.	morn.	1 40
28 7		4 18 8	14	0 7	2 30
29 E	5th past TRIN.	4 19 8	28	0 36	3 20
30 2	clo. fast 2m. 56.	4 19 8	neck.	1 0	4 10

30  
22  
17  
13  
10  
4  
38  
44

1.  
2  
3  
4  
5  
6  
7  
8  
9  
10  
11  
12  
13  
14  
15  
16  
17  
18  
19  
20  
21  
22  
23  
24  
25  
26  
27  
28  
29  
30



June

- 1. S. fair very warm
- 2. S. fair very warm
- 3. W. rainy - arrived Brig <sup>repose</sup> ~~repose~~   
 arrived in the Harbor
- 4. W. Ditto
- 5. Th: fair came to town
- 6. F. D.
- 7. S. D.
- 8. S. D.
- 9. M. D.
- 10. Tu. D.
- 11. W. D.
- 12. Th. D. W: rain.
- 13. F. rainy & blows at S. E.
- 14. S.
- 15. S. Ships for New York failed.
- 16. M.
- 17. F.
- 18. W. n. n. E. Ships for England failed   
 & mermaid for Bay Bundry
- 19. Th: cold raw weather variable wind
- 20. F. D.
- 21. S. D. young loss Calcutta
- 22. S. D.
- 23. M. D.
- 24. Tu. rain
- 25. W. fair, left town after breakfast:
- 26. Th: fair. arrived home at 11.   
 (ships failed) (Kieffer Calcutta)
- 27. F. rainy & thunder in morning:   
 afternoon fair
- 28. S. fair
- 29. S. fair
- 30. Th. fair

77:  
 43  
 33  
 23  
 13  
 3  
 53  
 44  
 35  
 23  
 13  
 3  
 53  
 43  
 33  
 21  
 10  
 0  
 48  
 36  
 0  
 40  
 30  
 20  
 10  
 0  
 50  
 40  
 30  
 20  
 10



July

- 1. Fair
- 2 W. cloudy till 8 then fair
- 3 Th. fair
- 4 F. fair
- 5 S. fair
- 6 S. fair
- 7 M. in the morning, afternoon then fair  
set out at 1/2 after 2.
- 8 Th. arrived in town 1/2 after 10
- 9 Fair
- 10 W. afternoon showery E. rain  
from 10 till 11:30
- 11 Th. cloudy morning fair afternoon
- 12 S. arrived Rainbow of Rebel Ship  
Hancock
- 13 S. fair S.
- 14 M. cloudy morn. at 4 rain till  
noon fair
- 15 F. at noon clear fair afternoon
- 16 W. fair
- 17 Th. fair
- 18 F. fair
- 19 S. fair
- 20 S. fair
- 21 M. fair
- 22 F. rainy morn. foggy afternoon
- 23 W. rain fair afternoon
- 24 Th. fine weather
- 25 F. Ditto
- 26 S. bowry E. rainy left town  
at 10.
- 27 S. arrived home 1/2 after 7  
raining
- 28 M.
- 29 F.
- 30 W.
- 31 F.

30  
22  
17  
13  
10  
4  
28  
44

I  
M  
D  
1  
2  
3  
4  
5  
6  
7  
8  
9  
10  
11  
12  
13  
14  
15  
16  
17  
18  
19  
20  
21  
22  
23  
24  
25  
26  
27  
28  
29  
30  
31

1777. JULY, hath XXXI Days. VII.

- New Moon 5th Day, 4h. 20m. Morning.
- ☽ First Quarter 13th Day, 9h. 30m. Morning.
- Full Moon 20th Day, at Noon.
- ☾ Last Quarter 26th Day, 4h. 20m. Morning.

M D	W D	Remarkable Days, Weather, &c.	r. ☉ s.			D's r. ☉ s.		F. Sea.		
			H.	M.	H.	Place.	H	M	H	M
1	3	Pretty hott, but	4	19	8	25	1	40	5	0
2	4	VII. Virgin MARY.	4	20	8	arms.	2	15	5	50
3	5	● Peri. flying clouds	4	20	8	21	2	55	6	40
4	6	clock fast 3m. 42f.	4	21	8	breast	3	32	7	35
5	7	increase to showers.	4	21	8	15	D	16	8	30
6	E	6th past TRINITY.	4	22	8	29	8	33	9	16
7	2	Thunder, hot and per-	4	22	8	heart.	9	11	10	2
8	3	haps rain,	4	23	8	23	9	44	10	48
9	4	clock fast 4m. 31f.	4	23	8	belly.	10	12	11	35
10	5	then more hot	4	24	8	16	10	41	12	22
11	6	weather, fol-	4	25	8	28	11	8	1	9
12	7	lowed by refreshing	4	25	8	reins.	11	35	1	56
13	E	7th past TRIN.	4	26	8	22	12	●	2	43
14	2	clock fast 5m. 11f.	4	27	8	secret	morn.	3	10	
15	3	showers.	4	28	8	17	0	30	3	57
16	4	● Apog.	4	29	8	thigh	1	0	4	44
17	5		4	30	8	15	11	43	5	51
18	6	clock fast 5m. 34f.	4	31	8	28	2	30	6	28
19	7	Great signs of	4	32	8	knees	3	11	7	15
20	E	8th past TRIN.	4	33	8	27	☾	rise	8	4
21	2	rain.	4	34	8	legs.	8	24	8	52
22	3		4	35	8	27	9	15	9	42
23	4	clock fast 5m. 51f.	4	36	8	feet.	9	40	10	33
24	5		4	37	8	26	10	11	11	23
25	6	St. JA. DOG DAYS beg.	4	38	8	head.	10	42	12	14
26	7		4	39	8	24	11	14	1	5
27	E	9th past TRIN.	4	40	8	neck.	11	46	1	55
28	2	clo. fast 5m. 54f.	4	40	8	21	morn.	2	45	
29	3	Clear weather.	4	41	8	arms.	0	24	3	36
30	4	● Per.	4	42	8	18	1	4	4	27
31	5		4	43	8	breast	1	42	5	17



. Sea  
1. M.

6 10  
 7 0  
 7 50  
 8 40  
 9 30  
 0 20  
 1 10  
 2 0  
 2 50  
 1 40  
 2 30  
 3 20  
 4 10  
 5 0  
 5 50  
 6 40  
 7 35  
 8 30  
 9 36  
 0 22  
 1 8  
 1 54  
 2 40  
 1 26  
 2 12  
 3 0  
 3 48  
 4 36  
 5 26  
 6 14  
 7 4

. fair  
 . fair  
 . rainy  
 . fair  
 fair day. W. rain  
 . foggy & lowry  
 . fair . light drizzling & Col. S.  
 . fair  
 . cloudy W. very warm E. rainy &  
 . windy n. w. clear up -  
 . fair  
 . fair  
 . fair  
 Th. cloudy & rainy morn: afternoon: fair  
 Th. lowry & showery  
 S.  
 . fair  
 . fair  
 . fair - cap. M. Thomson & party  
 . fair  
 Th. fair  
 Th. fair but very hot  
 S. more moderate  
 S. fair  
 M. fair E. & lowry  
 T. cloudy threatening weather  
 W. fair  
 Th. fair  
 T. fair  
 S. showery  
 S. rain all day. P. S. to S.

Ad. Cow had  
English Bull

1. m. fair. Very warm
2. J. fair but cool E; windy.
3. W. cool windy N.
4. Th. fair wind W.
5. J. fair S.W. warm
6. S. very sultry hot S.W.
7. S. cloudy morn. At 1 thunder & rain  
a storm at n. E & great rain
8. m. continues showery cool. n. w
9. J. fair but cool. n. w n. E.
10. W. variable sometimes cloudy
11. Th. cloudy till 10 then fair
12. J. fair cool to 2. left home in p.m. 1  
lay at Willis's
13. S. fair. w. lowry lay at Bowens
14. S. fair — — — at m. monros
15. m. fair — arrived at am. at 2
16. J. fair
17. n. fair
18. Th. fair morn: E. cloudy
19. J. rainy & stormy n. E
20. S. fair few very at times left am.
21. S. fair came to Bowens
22. m. cloudy at 9 rain & cont. all day  
came to Willis's
23. J. fair w. cloudy & in night  
had rain
24. w. rainy till 10. then cloudy
25. Th. fall threatening weather
26. J. cloudy & showery E. windy
27. J. very windy n. n. E.
28. J. fair morning n. to n. E.  
cool
29. m. frost in morning ~~then~~ fair day  
more small snow
30. J. great white frost this morn.  
but fine day  
w. cap Jovy fields



# IX. SEPTEMBER hath XXX Days, 177

- New Moon 2d Day, 11h. 30m. Forenoon,
- ☾ First Quarter 10th Day, 10h. 30m. Forenoon,
- Full Moon 17th Day, 6h. 30m. Morning,
- ☽ Last Quarter 23d Day, at Midnight.

M	W	Remarkable Days, Weather, &c.	r. ☉ s.			D's r. ☉ s.		F. Sea.		
			H	M	H	Place.	H.M.	H	M.	
1	2	The heat will soon decrease.	5	26	7	28	4	7	7	48
2	3		5	28	7	belly.	D	secs	8	30
3	4	Perhaps rain.	5	30	7	22	7	15	9	16
4	5	DOGS DAYS end.	5	31	7	reins.	7	40	10	2
5	6	Cool mornings & Even.	5	33	7	16	8	16	10	48
6	7	clock slow 1m. 54f.	5	35	7	28	8	35	11	34
7	E	15h past TRIN.	5	36	7	secret	9	4	12	20
8	2	Nat. VIRG. MARY	5	38	7	22	9	37	1	6
9	3		5	39	7	thighs	10	18	1	52
10	4	● Apogee	5	41	7	18	11	4	2	4
11	5		5	43	7	knees	11	48	3	3
12	6	clo. slow 3m. 55f.	5	44	7	15	morn.	4	2	
13	7	rain and violent winds.	5	45	7	29	0	53	5	1
14	E	16th past TRINITY	5	47	7	legs.	2	0	6	
15	2	A spell of pleasant	5	48	7	29	3	8	6	5
16	3	clo. slow 5m. 19f.	5	50	7	feet.	4	18	7	4
17	4	LAMB. Bishop	5	52	7	29	(	risc	8	3
18	5	weather	5	53	7	head.	7	4	9	1
19	6	P.	5	55	7	29	7	39	10	4
20	7	clock slow 7m. 3f.	5	56	7	neck.	8	16	10	5
21	E	17th past TRIN.	5	58	7	28	9	2	11	38
22	2	Fine weather.	5	59	7	arms.	9	41	12	24
23	3	K. GEORGE III. crow.	6	0	6	24	10	28	1	11
24	4	● Perige.	6	1	6	breast	11	14	2	58
25	5	clo. slow 8m. 25f.	6	3	6	19	morn.	3	44	
26	6	St. CYPRIAN	6	5	6	heart	0	6	4	31
27	7	Cold evenings but	6	6	6	13	1	6	5	17
28	E	18th past TRIN.	6	8	6	26	2	5	6	4
29	2	St MICH. pleasant days	6	9	6	belly.	3	5	6	51
30	3	clock slow 10m. 4f.	6	11	6	19	4	5	7	37

rain  
 W  
 E.  
 Day  
 1  
 2  
 3  
 4  
 5  
 6  
 7  
 8  
 9  
 10  
 11  
 12  
 13  
 14  
 15  
 16  
 17  
 18  
 19  
 20  
 21  
 22  
 23  
 24  
 25  
 26  
 27  
 28  
 29  
 30  
 Day  
 morn:

2A. OCTOBER hath XXXI. Days, 1777.

- New Moon 2d Day, 3h. 30m. Morning.
- ☾ First Quarter 9th Day, 9h. 30m. Night.
- Full Moon 16th Day, at Noon.
- ☾ Last Quarter 23d Day, 3h. 30m. Morning.
- New Moon 31st Day 8h. 30m. Night.

M D	W D	Remarkable Days, Weather, &c.	r. ☉ s.		D's Place.	r. ● s.		F. sea.	
			H.	M.		H.	M.	H	M
1	4	Some pleasant	6	12	6 reins.	5	5	8	10
2	5	weather.	6	14	6 13	☾ sets		9	0
3	6	Strong south winds. A	6	16	6 25	6 46		9	50
4	7	clock flow 11m. 18f.	6	18	6 secret	7 12	10	40	
5	E	19th past TRINITY	6	19	6 19	7 46	11	30	
6	2	Flying clouds and	6	21	6 thigh	8 30	12	20	
7	3	showers.	6	22	6 14	9 16	1	10	
8	4	● Apogee.	6	24	6 28	10 11	2	0	
9	5	St. DENNIS Bish.	6	25	6 knees	11 10	2	50	
10	6	Cloudy if not	6	26	6 24	morn.	3	40	
11	7	rain	6	28	6 legs.	0 12	4	30	
12	E	20th past TRINITY	6	30	6 23	1 10	5	20	
13	2	clock flow 13m. 42f.	6	31	6 feet.	2 20	6	10	
14	3	After a bustle in the	6	33	6 22	3 31	7	0	
15	4	air, the weather's	6	35	9 head.	4 40	7	45	
16	5	very calm and clear	6	36	6 23	☾ sets	8	30	
17	6	clock flow 14m. 33f.	6	38	6 neck.	6 29	9	20	
18	7		6	39	6 22	7 15	10	6	
19	E	21st past TRIN,	6	40	6 arms.	8 0	10	52	
20	2		6	42	6 20	8 48	11	38	
21	3	Gentle gales	6	43	6 breast	9 38	12	26	
22	4	cl. fl. 15m. 24f. ● Pe.	6	45	6 14	11 30	1	13	
23	5	fill the sails.	6	46	6 28	11 22	2	0	
24	6		6	48	6 heart.	morn.	2	47	
25	7	R. GE. beg. to eig. Ocl.	6	49	6 23	0 5	3	34	
26	E	22d p.T. (1760. CRIS.	6	51	6 belly.	1 8	4	21	
27	2	clock flow 15m. 58f.	6	52	6 14	2 0	5	8	
28	3	St. SIMON & JUDE	6	54	6 27	2 54	5	55	
29	4	Pleasant weather	6	55	6 reins.	3 53	6	41	
30	5	for the season.	6	56	6 21	4 52	7	27	
31	6	clock flow 16m. 11f. A	6	58	6 secret	☾ sets	8	13	

1.  
2  
3  
4  
5  
6  
7  
8  
9  
10  
11  
12  
13  
14  
15  
16  
17  
18  
19  
20  
21  
22  
23  
24  
25  
26  
27  
28  
29  
30  
31

- Oct  
 1. very windy n. & threatening clouds  
 2 fine morning, cloudy afternoon  
 3 foggy but fair afternoon  
 4 S. fine weather foggy all night  
 5 S. foggy morning but fine day  
 6 m. fair w. threatening  
 7 T. very fine pleasant day S. W to W  
 8 W. cool. n. W. fine afternoon  
 9 Th: foggy in morn: but fair afternoon  
 10 T. rainy till 10 then clear up cold w. post  
 11 S. fair but cool. left home at 10 by at most  
 12 S. very fine day, arrived in town in evening  
 13 m. rainy morning, fair afternoon  
 14 Tu: fair  
 15 W. fair.  
 16 Th: fine weather  
 17 F. ditto —  
 18 S. cloudy. S. E. afternoon rain &  
 19 S. fine weather & warm  
 20 m. ditto  
 21 T. misty & rain, w. heavy shower  
 22 W. variable weather & misty  
 23 Th.  
 24 F.  
 25 S.  
 26 S. fair  
 27 m.  
 28 S.  
 29 W. rainy & stormy  
 30 Th  
 31 S. cold raw weather

Sea.  
M

10  
 0  
 50  
 40  
 30  
 20  
 10  
 0  
 50  
 40  
 30  
 20  
 10  
 0  
 45  
 30  
 20  
 6  
 52  
 38  
 26  
 13  
 0  
 47  
 34  
 21  
 8  
 55  
 41  
 27  
 13

21  
22  
23  
24  
25  
26  
27  
28  
29  
30  
31

- 21 S
- 22 S
- 23 m } fair
- 24 S }
- 25 W. }
- 26 Th. Lowry ev: stormy & rain
- 27 Th. windy at W.
- 28 S. fair but cold. left Halifax at 10
- 29 S. lowry weather. ev: rain arrived at home at 5.
- 30 m. rain
- 11 Th. stormy
- 12 W. frost & fair till noon then show
- 13 Th. gradually snow & clear at times
- 14 Th. Ditto Rest
- 15 S. Ditto D.
- 16 S. cold but fair. D.
- 17 m. moderate. arrived Feb. Henry
- 18 Th. snowy air n. e. cold
- 19 W. Ditto n. w.
- 20 Th. very cold n. n. w.
- 21 Th. moderate wind S. S. W.
- 22 S. rain
- 23 S. raw n. e. wind
- 24 m. moderate & hazy
- 25 Th. Ditto
- 26 W. rainy w. E. & V.
- 27 Th. Ditto -
- 28 Th. moderate S. W
- 29 S. Ditto .. Variable
- 30 S. misty & rainy at times n. e

# XI. NOVEMBER hath XXX Days. 1777.

- ☽ First Quarter, 8th Day, 6h. 30m. Morning.
- Full Moon, 14th Day at Midnight.
- ☾ Last Quarter, 22d Day 11h. 2m. Forenoon.
- New Moon, 30th Day 6h. 30m. Afternoon.

M	W	Remarkable Days, Weather, &c.	r.	☉	s.	D's	r.	☽	F. sea.
D	D		H.	M.	H.	Place.	H	M	M
1	7	ALL SAINTS	6	59	6	17	5	53	9 3
2	E	23d p. TR. All SOULS	7	1	5	29	6	28	9 53
3	2	<i>wet weather</i>	7	2	5	high	7	12	10 43
4	3	clock slow 16m 9f.	7	4	5	25	8	2	11 33
5	4	G. Po. T. 1605. o. s. ● A.	7	5	5	knees	8	55	12 23
6	5	<i>Clears by warm.</i>	7	6	5	21	10	0	1 14
7	6	Were things done.	7	8	5	legs	11	6	2 4
8	7	<i>twice,</i>	7	9	5	19	morn	2	54
9	E	24th p. TRIN.	7	10	5	feet	0	15	3 44
10	2	many would be wise:	7	11	5	18	1	25	4 34
11	3	St. Mart. Bif.	7	12	5	head	2	35	5 24
12	4	<i>windy and cloudy,</i>	7	13	5	18	3	45	6 14
13	5	<i>perhaps a storm.</i>	7	14	5	neck	4	50	7 4
14	6	Cl. fl. 15m. 16f. P	7	15	5	17	☾	rise	7 54
15	7	<i>Some temperate pleasant</i>	7	16	5	arms	5	47	8 45
16	E	25th p. TR. <i>weather</i>	7	18	5	14	6	28	9 31
17	2	<i>for the season.</i>	7	19	5	28	7	13	10 27
18	3	● Perigee	7	21	5	breast	8	3	11 14
19	4	A man out of favor	7	22	5	24	8	57	12 1
20	5	Cl. fl. 14m. 15f.	7	23	5	heart.	9	50	12 47
21	6	is slighted by a	7	24	5	18	10	49	1 33
22	7	<i>Violent neighbour.</i>	7	25	5	belly	11	48	2 20
23	E	26th p. TR. St. CLER.	7	26	5	12	morn	3	7
24	2	Cl. fl. 12m. 56f.	7	27	5	24	0	47	3 54
25	3	<i>winds about</i>	7	28	5	reins	1	45	4 41
26	4	<i>these days.</i>	7	29	5	18	2	45	5 27
27	5		7	30	5	secret	3	44	6 14
28	6	Clock slow 11m 38f	7	31	5	12	4	47	7 0
29	7	St. ANDREW.	7	32	5	25	5	51	7 46
30	E	ADVENT. SUNDAY	7	33	5	high	☽	sets	8 30



**XII DECEMBER hath XXXI Days. 1777.**

- ☽ First Quarter 7th Day, 2h 30m. Afternoon.
- Full Moon 14th Day, 1h. Afternoon.
- ☾ Last Quarter 22d Day, 9h. Morning.
- New Moon 30th Day, 3h 10m. Morning.

M	W	Remarkable Days, Weather, &c.	r.	○	s.	D's	r.	●	F	Seq.
D	D		H.	M.	H.	Place	H.	M.	H	M
1	2	Fair, pleasant and	7	33	5	20	5	43	9	20
2	3	Clock flow 9m. 49f.	7	34	5	knees	6	33	10	10
3	4	● <del>Supra</del> moderate	7	35	5	17	7	34	11	0
4	5	for the season.	7	36	5	legs.	8	39	11	50
5	6	Symptoms of a snow	7	36	5	16	9	46	12	40
6	7	NICH. BISH. storm ap-	7	37	5	29	10	54	1	30
7	E	2d Sun. in ADVENT.	7	38	5	feet	morn.		2	20
8	2	Clock flow 7m. 37f.	7	38	5	28	0	8	3	10
9	3	proaching, and	7	39	5	head.	1	20	4	0
10	4	is likely to continue	7	39	5	16	2	26	4	50
11	5	with heavy	7	40	5	neck.	3	35	5	40
12	6	P <del>abinds.</del>	7	40	5	25	4	44	6	30
13	7	Clock flow 5m. 18f.	7	41	5	arms.	5	40	7	25
14	E	3d in ADVENT	7	42	5	23	6	rife	8	15
15	2	● <del>Reins</del>	7	42	5	breast	5	37	9	0
16	3	More falling weather,	7	42	5	19	6	35	9	45
17	4	then moderate but	7	42	5	heart.	7	33	10	30
18	5	strong winds with	7	42	5	14	8	30	11	15
19	6	Cl. flow 2m. 21f.	7	42	5	26	9	27	12	0
20	7	rain.	7	42	5	belly.	10	24	12	45
21	E	4th in ADVENT	7	42	5	20	11	22	1	30
22	2	Cold and freezing	7	42	5	Reins	morn.		2	15
23	3	weather follows for	7	42	5	14	0	20	3	0
24	4	some days. Sun & cl. to.	7	42	5	26	0	18	3	45
25	5	CHRIST born.	7	42	5	secret	2	24	4	30
26	6	St. STEPHEN A	7	42	5	20	3	33	5	15
27	7	St. JOHN EVAN.	7	42	5	thigh	4	43	6	0
28	E	INNOCENTS.	7	41	5	16	5	53	6	45
29	2	Cl. fast 3m. 8f.	7	41	5	knees	7	4	7	40
30	3	● <del>Reins</del>	7	40	5	12	7	fer.	8	30
31	4	Hard frost & clear.	7	40	5	27	5	50	9	15

Candles of old book 900 ll  
 those in jail 98 -  
 those rec'd in march 10. to ll. (2<sup>3</sup>/<sub>4</sub> hours)

Print Names to Mr. J. March 6<sup>th</sup> 1780.  
 rd. march 24. 3 hours 1/2

Expenses I am to pay  
 from 12<sup>th</sup> April to 24 August D. Comm. 270  
 Labourer B. Master 2 135  
 £ 4. 4. 4<sup>1</sup>/<sub>4</sub> 405  
 25 August to 24 Dec. D. Comm. 244  
 Labourer B. Master 122  
 to 24. June to 5. 13. 9 3. 16. 3 366  
 1 R. eyen is to 3. 16. 3  
 or to 4. 1. 8 curr 7 8. 7. 7<sup>1</sup>/<sub>2</sub>

1 lb. pease 1. 3  
 1 lb. Rice 3. 3  
 1 lb. flour 3. 3  
 1 lb. Pork 6. 3  
 1 lb. Beef 4. 3  
 1 lb. Butter 8.  
 for small pieces 3<sup>rd</sup> flour  
 for 7<sup>th</sup> Beef } 8.  
 or 5<sup>th</sup> pork } 7 is 18.

Candles rec'd of Mr. Morden which  
 he had of Mr. Goldthwait  
 2 boxes Very bad 1 mark 67<sup>1</sup>/<sub>2</sub> 11. 56  
 1 - - - 75. 11. 64  
 carr. 19. 6 returned 14 2<sup>1</sup>/<sub>2</sub> - 12. 0  
 fact. 9. 6

nanny Inget Commenced at wages  
 March 31<sup>st</sup> 1777.

Phoebe Stiles came the 22<sup>nd</sup> April 1777.

247<sup>1</sup>/<sub>2</sub> . . . £ 12. 7. 6 P. Morden  
 120<sup>1</sup>/<sub>2</sub> . . . 5. 5 deduct £ 6. 3. 9  
 £ 6. 7. -

Seq  
M  
20  
10  
0  
50  
40  
30  
20  
10  
0  
50  
40  
30  
20  
10  
0  
50  
45  
30  
15  
0  
45  
30  
15  
0  
45  
30  
15  
0  
45  
30  
15

By Mr Nuttings Feb  
Feb. 3. 1777. 23 Bl. 25 B. per. 24 B. per  
p him by G. 2 2. 12. -

- April
1. Tu: fair but cold
  2. W. ditto
  3. Th: low morning. Ev: rainy
  4. Fr. snow & fleet windy n. w.
  5. S. windy at n. n. w & cold.
  6. S. wind S. Chilly
  7. m. 20° - saw cold, left town
  8. F. fair calm around home
  9. W. wind S. moderate (ship navy field)
  10. Th: fair S.
  11. F. fair w.
  12. S. windy at n. w & cool
  13. S. fair morning, afternoon cold <sup>in the night a storm</sup> <sub>left home</sub> of hail & rain
  14. m. stormy & rainy S. Ev: foggy around
  15. F. cold & stormy n. w. white pine in town
  16. W. ditto Ev: moderate
  17. Th: snow S. W. arrived ship navy from Sweden
  18. F. cold S. wind threatening afternoon
  19. S. cloudy but moderate weather
  20. S. fair S. S. W. cool
  21. m. 20°
  22. Tu: 20° S. E. phoebe sailed
  23. W. 20° & fine weather
  24. Th: 20°
  25. F. cold S. E. wind Ev: snow & fleet
  26. S. E. rain
  27. S. stormy from fleet & rain
  28. m. moderate weather w. part of the new york fleet came in
  29. F. part of the new york fleet & the Tartar came in, fair
  30. W. left town <sup>at</sup> past 7 came to Ross - cool but fair n. n. w.

- returned home. fine day. lowry rainy Ev. 7<sup>th</sup>  
 2<sup>nd</sup> N.E. misty raw weather windy 7<sup>th</sup>  
 3<sup>rd</sup> W. very windy lowry weather  
 4<sup>th</sup> f.  
 5<sup>th</sup> M. fair Ev: lowry  
 6<sup>th</sup> Tu: misty morning but fair  
 7<sup>th</sup> W. fair afternoon  
 8<sup>th</sup> Th: cloudy & showery.  
 9<sup>th</sup> F. cloudy morn. fair afternoon  
 10<sup>th</sup> S. fair  
 11<sup>th</sup> S. 30° — col. Dickson died  
 12<sup>th</sup> M. Snow N. E. all morning Ev. fleet  
 13<sup>th</sup> Tu: fair at out for North  
 14<sup>th</sup> W. showery very cold N. E. ev. 14<sup>th</sup>  
 fair evening  
 15<sup>th</sup> Th: fair  
 16<sup>th</sup> F. cloudy threatening rain (left Boston  
 17<sup>th</sup> S. cloudy <sup>at 10 o'clock</sup> morning fair afternoon  
 arrived at Montreal at 6  
 18<sup>th</sup> S. came to Annapolis, fair  
 19<sup>th</sup> M. fair till evening then rain.  
 20<sup>th</sup> T. rain  
 21<sup>th</sup> W. fair  
 22<sup>th</sup> Th: windy at noon rainy  
 Ev: windy —  
 23<sup>th</sup> F: squally till noon  
 24<sup>th</sup> S. fair & warm (at Annapolis  
 lay at Montreal)  
 25<sup>th</sup> S. ditto — (at Boston)  
 26<sup>th</sup> M. cool wind E. (at Dickson's  
 27<sup>th</sup> Tu: threatening rain (Came home  
 28<sup>th</sup> W. fair  
 29<sup>th</sup> Th: 30°  
 30<sup>th</sup> F. 30°  
 31<sup>th</sup> S. 30° the transports arrived  
 for the Babon



Del.

1. m. misty & rainy all day N.E.  
the steamer Henry & Carrell sail
2. J. squally snow & cold W. to N.W. frost
3. W. Cold N.N.W. <sup>Spent full petre</sup>  
<sup>picnic to home</sup>
4. Th: Early this morning rain & thaw  
<sub>Ev: snow & frost</sub>
5. J. windy & snow N.E. very hard frost
6. J. very cold but sunshine - N.N.W.
7. S. mild cloudy weather thaw
8. m. rainy at night frost
9. J. frost & fair N.W.
10. W. Ditto
11. Th. Ditto
12. J. Ditto <sub>Ev: Col. Gorham sail</sub>
13. S. cloudy & threatening S.E. in the  
<sub>night & storm</sub>
14. S. windy all day at night frosty
15. m. cold & windy N.W.
16. J. fair N.
17. W. fair
18. Th: threatening & raw cold Ev: rain
19. J. rainy at times. Ev. frost
20. S. Cold. got out for Halifax at  
8. lay at Montgomery's.
21. S. more moderate threatening rain  
arrived in town at 1/2 past 1
22. m. threatening
23. J. thaw in morning. Ev: frost
24. W. left town at 1/2 past & very cold  
lay at Montgomery's
25. Th: arrived home at 1/2 more  
moderate
26. J. cloudy sunny
27. S. snow. - E. to N.E.
28. S. squally with snow N.E.
29. m. Raw & rainy <sup>afternoon cold &</sup>  
<sup>foggy at W.</sup>

30. The cold. Is windy.

31. ~~The~~ fair ~~and~~ tolerable weather  
for the season

