

**CIHM
Microfiche
Series
(Monographs)**

**ICMH
Collection de
microfiches
(monographies)**



Canadian Institute for Historical Microreproductions / Institut canadien de microreproductions historiques

© 1996

Technical and Bibliographic Notes / Notes techniques et bibliographiques

The Institute has attempted to obtain the best original copy available for filming. Features of this copy which may be bibliographically unique, which may alter any of the images in the reproduction, or which may significantly change the usual method of filming, are checked below.

L'Institut a microfilmé le meilleur exemplaire qu'il lui a été possible de se procurer. Les détails de cet exemplaire qui sont peut-être uniques du point de vue bibliographique, qui peuvent modifier une image reproduite, ou qui peuvent exiger une modification dans la méthode normale de filmage sont indiqués ci-dessous.

Coloured covers/
Couverture de couleur

Covers damaged/
Couverture endommagée

Covers restored and/or laminated/
Couverture restaurée et/ou pelliculée

Cover title missing/
Le titre de couverture manque

Coloured maps/
Cartes géographiques en couleur

Coloured ink (i.e. other than blue or black)/
Encre de couleur (i.e. autre que bleue ou noire)

Coloured plates and/or illustrations/
Planches et/ou illustrations en couleur

Bound with other material/
Relié avec d'autres documents

Tight binding may cause shadows or distortion along interior margin/
La reliure serrée peut causer de l'ombre ou de la distorsion le long de la marge intérieure

Blank leaves added during restoration may appear within the text. Whenever possible, these have been omitted from filming/
Il se peut que certaines pages blanches ajoutées lors d'une restauration apparaissent dans le texte, mais, lorsque cela était possible, ces pages n'ont pas été filmées.

Additional comments: /
Commentaires supplémentaires: Copy has manuscript annotations.

Coloured pages/
Pages de couleur

Pages damaged/
Pages endommagées

Pages restored and/or laminated/
Pages restaurées et/ou pelliculées

Pages discoloured, stained or foxed/
Pages décolorées, tachées ou piquées

Pages detached/
Pages détachées

Showthrough/
Transparence

Quality of print varies/
Qualité inégale de l'impression

Continuous pagination/
Pagination continue

Includes index(es)/
Comprend un (des) index

Title on header taken from: /
Le titre de l'en-tête provient:

Title page of issue/
Page de titre de la livraison

Caption of issue/
Titre de départ de la livraison

Masthead/
Générique (périodiques) de la livraison

This item is filmed at the reduction ratio checked below/
Ce document est filmé au taux de réduction indiqué ci-dessous.

10X	12X	14X	16X	18X	20X	22X	24X	26X	28X	30X	32X
							✓				

The copy filmed here has been reproduced thanks to the generosity of:

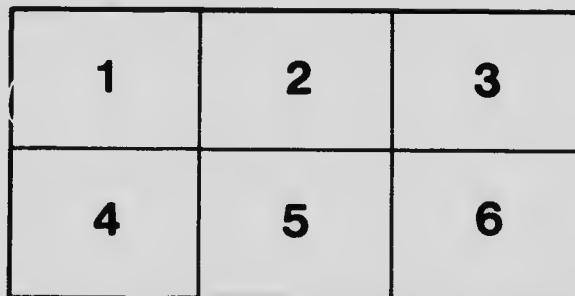
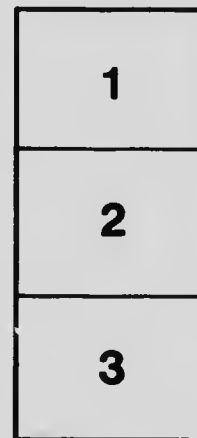
Thomas Fisher Rare Book Library,
University of Toronto Library

The images appearing here are the best quality possible considering the condition and legibility of the original copy and in keeping with the filming contract specifications.

Original copies in printed paper covers are filmed beginning with the front cover and ending on the last page with a printed or illustrated impression, or the back cover when appropriate. All other original copies are filmed beginning on the first page with a printed or illustrated impression, and ending on the last page with a printed or illustrated impression.

The last recorded frame on each microfiche shall contain the symbol \rightarrow (meaning "CONTINUED"), or the symbol ∇ (meaning "END"), whichever applies.

Maps, plates, charts, etc., may be filmed at different reduction ratios. Those too large to be entirely included in one exposure are filmed beginning in the upper left hand corner, left to right and top to bottom, as many frames as required. The following diagrams illustrate the method:



L'exemplaire filmé fut reproduit grâce à la générosité de:

Thomas Fisher Rare Book Library,
University of Toronto Library

Les images suivantes ont été reproduites avec le plus grand soin, compte tenu de la condition et de la netteté de l'exemplaire filmé, et en conformité avec les conditions du contrat de filmage.

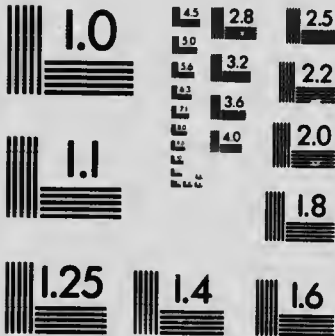
Les exemplaires originaux dont la couverture en papier est imprimée sont filmés en commençant par le premier plat et en terminant soit par la dernière page qui comporte une empreinte d'impression ou d'illustration, soit par le second plat, selon le cas. Tous les autres exemplaires originaux sont filmés en commençant par la première page qui comporte une empreinte d'impression ou d'illustration et en terminant par la dernière page qui comporte une telle empreinte.

Un des symboles suivants apparaîtra sur la dernière image de chaque microfiche, selon le cas: le symbole \rightarrow signifie "A SUIVRE", le symbole ∇ signifie "FIN".

Les cartes, planches, tableaux, etc., peuvent être filmés à des taux de réduction différents. Lorsque le document est trop grand pour être reproduit en un seul cliché, il est filmé à partir de l'angle supérieur gauche, de gauche à droite, et de haut en bas, en prenant le nombre d'images nécessaire. Les diagrammes suivants illustrent la méthode.

MICROCOPY RESOLUTION TEST CHART

(ANSI and ISO TEST CHART No. 2)



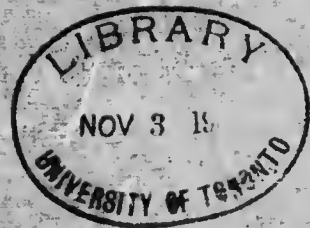
APPLIED IMAGE Inc

1653 East Main Street
Rochester, New York 14609 USA
(716) 482 - 0300 - Phone
(716) 288 - 5989 - Fax

Pamph
Art
Cat
R

Winnipeg Industrial Bureau

**Catalogue
Winnipeg Museum
of Fine Arts**



**Opening Exhibition by
Royal Canadian Academy of Arts**

**December Sixteenth
Nineteen-Eleven**

WINNIPEG MUSEUM
OF
FINE ARTS.



ROYAL CANADIAN ACADEMY
EXHIBITION OF PAINTINGS:
OPEN. DEC. 16: 1912

Curator :
D. MACQUARRIE

Addresses of the artists and particulars regarding any of the paintings, water-colours and pastels exhibited can be obtained from the Curator, who also has prices of any which are for sale.

Royal Canadian Academy of Arts

FOUNDED 1880

Founders

H.R.H. THE PRINCESS LOUISE, DUCHESS OF ARGYLL
AND HIS GRACE THE DUKE OF ARGYLL

Patron

H.R.H. THE DUKE OF CONNAUGHT
Governor-General of Canada

Honorary Patron

THE MARQUESS OF LANSDOWNE

Officers for 1911-12

<i>President</i>	WM. BRYMNER	Montreal
<i>Vice-President</i>	A. F. DUNLOP	Montreal
<i>Treasurer</i>	JAMES SMITH	Toronto
<i>Secretary</i>	E. DYONNET	Montreal

Council

<i>One Year</i>		<i>Two Years</i>	
Frank Darling	Toronto	W. Hope	Montreal
E. Maxwell	Montreal	G. Hahn	Toronto
G. A. Reid	Toronto	P. Hebert, C.M.G.	Montreal
John Hammond	Sackville	R. Harris, C.M.G.	Montreal
James Smith	Toronto	J. W. H. Watts	Ottawa
		Homer Watson	Doon

Auditors

M. Matthews and F. M. Bell-Smith

Honorary Retired Academicians

N. Bourassa	Montreal
S. H. Capper	England
D. B. Dick	England

Academicians

Painters

F. M. Bell-Smith	Toronto
F. Brownell	Ottawa
W. Brymaer	Montreal
F. S. Challenger	Conestogo
W. C. Wikshank	Toronto
Maurice Cullen	Montreal
E. Dyonnet	Montreal
E. Wyly Grier	Toronto
J. Hammond	Sackville
Robt. Harris, C.M.G.	Montreal
Wm. Hope	Montreal
F. McG. Knowler	Toronto
T. Mower MacCormack	Toronto
M. Matthews	Toronto
A. D. Patterson	Montreal
Geo. A. Reid	Toronto
Homer Watson	Doon
Curtis Williamson	Toronto

Frank Darling	Toronto
A. F. Dunalop	Montreal
A. C. Hutchison	Montreal
E. Maxwell	Montreal
James Smith	Toronto

Sculptors

P. Hebert, C.M.G.	Montreal
Hamilton MacCarthy	Ottawa

Designer

Gustav Hahn	Toronto
A. H. Howard	Toronto
J. W. H. Watts	Ottawa

Associates

Painters

W. E. Atkinson	Toronto
J. W. Beatty	Toronto
Harry Britton	Toronto
G. Bruenech	Toronto
W. H. Clapp	Montreal
A. Cox	Gedling, Eng.
Mrs. G. Spurr-Cutts	Toronto
Wm. Cutts	Toronto
J. G. Franchere	Montreal
R. F. Gagen	Toronto
Clarence Gagnon	Montreal
L. Graham	Montreal
Miss C. S. Hagarty	Toronto

Painters

Mrs. E. A. McG. Knowles	Toronto
C. M. Manly	Toronto
Edmund Morris	Toronto
Miss Laura Muntz	Montreal
Mrs. M. H. Reid	Toronto
A. H. Robinson	Montreal
T. T. Rolph	Toronto
G. Horne Russell	Montreal
Jos. St. Charles	Montreal
W. A. Sherwood	Toronto
Wm. St. T. Smith	St. Thomas
A. Suzor-Cote	Montreal
F. A. Verner	London, Eng.

Architects

Edmund Burke Toronto
 John Gemmill Toronto
 W. Critchlow Harris Halifax
 E. L. Horwood Ottawa
 Norman MacVicar Montreal
 W. S. Maxwell Montreal
 J. Melville Miller Montreal
 P. E. Nobbe Montreal
 Charles J. Saxe Montreal
 Henry Sproatt Toronto

Sculptors

W. 3. Allward Toronto
 G. W. Hill Montreal

Designers

R. Palmer Toronto

Non-Resident Academicians

J. C. Forbes London
 C. S. Millard Cheltenham, Eng.
 A. T. Taylor London
 C. J. Way Lausanne
 P. F. Woodcock New York

Academicians Deceased

W. N. Creswell Died 1888	J. A. Fraser Died 1898
Allan Edson " 1888	Thomas Fuller " 1898
H. Perre " 1890	L. R. O'Brien " 1899
Paul Peel " 1892	O. R. Jacobi " 1901
W. G. Storm " 1892	C. E. Moss " 1901
D. Fowler " 1894	Forshaw Day " 1903
Antoine Plamondon " 1895	J. W. Hopkins " 1905
Thos. S. Scott " 1895	H. Langley " 1907
James Griffiths " 1896	Hy. Sandham " 1910
J. G. Howard " 1896	J. C. Pinhey " 1912

E. DYONNET,
 Secretary, Royal Canadian Academy,
 283 UNIVERSITY STREET,
 MONTREAL.

Oil Paintings, Water-Colors and Pastels

- W. E. ATKINSON, A.R.C.A. West Toronto
 1—Groote Kirke, Dordrecht.
 2—Moonrise.
- J. M. BARNESLEY Montreal
 3—The Quay, Dieppe.
 4—Sunset in France.
 5—Bass Rocks.
 6—Rothesay Castle.
- J. W. BEATTY, A.R.C.A. Toronto
 7—A Dutch Peasant.
 8—In the North of Holland.
 9—Emnes Harbour, Holland.
- F. M. BELL-SMITH, R.C.A. Toronto
 10—The Great Divide, Canadian Rockies.
 11—The Olympians from Victoria, B.C.
 12—Bow Echo Rock, Hazy Morning.
 13—Lake Louise.
- F. H. BRIGDEN Toronto
 14—Canadian Waterfall (Water-colour).
 15—The Golden Hour (Water-colour).
- HARRY BRITTON, A.R.C.A. Toronto
 16—The Drinking Place.
 17—Cornish Fishermen.
 18—The Mill Pond.
- FRANKLIN BROWNELL, R.C.A. Ottawa
 19—Sea at Porto Rico.
 20—Porto Rico Landscape.
 21—Street in St. Thomas, W.I.

- G. BRUENECH, A.R.C.A. Toronto
 22—Cockington Forge and Cottages, Devonshire (Water-colour).
- W. BRYMNER, P.R.C.A.
 23—Portraits of Miss Dorothy and of Miss Irene Vaughan,
 Lent by Victor E. Mitchell, Esq., K.C.
 24—Portrait of a Young Girl.
 25—Golden Autumn.
- MISS FLORENCE CARLYLE, A.R.C.A. Woodstock
 26—The Spring Song.
 27—The Threshold.
 28—Mother and Child.
- W. H. CLAPP, A.R.C.A. Montreal
 29—Under the Arbour.
 30—A Rainy Day.
 31—Landscape (Water-colour).
 32—Landscape (Water-colour).
- MISS ALBERTA CLELAND Montreal
 33—Elsie (Pastel).
- MAURICE CULLEN, R.C.A. Montreal
 34—Old Street, Montreal, Winter.
 35—Quebec, Winter.
 36—Moonlight, St. Eustache.
 37—A Montreal Cab Stand.
- MISS BERTHA DES CLAYES Montreal
 38—Old Normandy Cottage.
 39—In Normandy, France.
- MISS GERTRUDE DES CLAYES Montreal
 40—Autumn.
 41—Gentleman of the Time of Elizabeth.
- MRS. M. A. DIGNAM Toronto
 42—The Dunes, Holland.
 43—Dutch Interior.

- E. DYONNET, R.C.A. Montreal
 44—Early Morning, Berthier.
 45—Giuseppina.
 46—River Bayonne, Berthier.
 47—The Picture Book.
- A. M. FLEMING Chatham
 48—The Moon and the Fading Day.
- MISS HARRIET FORD Toronto
 49—Bruges.
 50—Au Cafe.
- ERNEST FOSBERY Ottawa
 51—Portrait of Thos. Ahearn, Esq.
 52—Lamplight.
- J. C. FRANCHERE, A.R.C.A. Montreal
 53—Lassitude.
- R. F. GAGEN, A.R.C.A. Toronto
 54—The Restless Sea.
 55—Evening, Valley of the Selkirks (Water-colour).
- CLARENCE A. GAGNON, A.R.C.A. Paris, France
 56—Les Deux Plages, Parame, St. Malo.
 57—Autumn Scene, Baie St. Paul.
 58—The Seine at St. Mammes.
 59—Twilight in the Laurentians.
- J. L. GRAHAM, A.R.C.A. Toronto
 60—Interior of Cattle Stall.
 61—Returning from Pasture.
 62—Afternoon in Epping Forest.
 63—In the Pastures at Twilight.
- T. G. GREENE Toronto
 64—The Barn Raising.
- E. WYLY GRIER, R.C.A. Toronto
 65—Portrait of My Father.
 66—The Blue Scarf.
 67—The Girl in Red.

- GUSTAV HAHN, R.C.A. Toronto
68—Dawn.
69—Meditation.
- FRED. HAINESMeadowvale
70—Dinner Time.
71—Stolen Sweets.
- JOHN HAMMOND, R.C.A.Sackville
72—Harbour of St. John, N.B.
73—Summer, Sackville.
74—The Return of the Flock.
75—Misty Morning.
76—The Willows.
77—Dutch Scene.
- LAUREN S. HARRISToronto
78—Deserted Barn.
79—Row of Houses, Wellington St., Toronto.
- ROBERT HARRIS, C.M.G., R.C.A.Montreal
80—The Banjo Player.
81—Adversity.
- R. S. HEWTONParis, France
82—Pentreath in a Mist, Cornwall.
83—Camaret-sur-Mer, Brittany.
- WILLIAM HOPE, R.C.A.Montreal
84—Woodland.
- A. Y. JACKSONWestmount
85—The Red Mill.
86—A Picardy Village.
- C. W. JEFFERYSYork Mills
87—Storm on the Prairie.
88—Qu'Appelle Valley (Water-colour).
89—Flight of Ducks, Saskatchewan (Water-colour).
- A. W. KILGOURMontreal
90—Boy with Mask.
91—Pumpkin Time.

- MRS. E. MCG. KNOWLES, A.R.C.A. Toronto
 92—The Dreamer.
 93—Evening.
 94—A Meadow.
- F. MCGILLIVRAY KNOWLES, R.C.A. Toronto
 95—La Grande Riviere, Beaupre, Que.
 96—An August Evening.
 97—Harvest Time.
- ARTHUR LISMER Toronto
 98—The Quarry.
 99—An Ontario Landscape.
- J. E. H. McDONALD Toronto
 100—Tracks and Traffic, Winter Morning.
 101—By the Lake, October Afternoon.
 102—Summer Clouds.
- K. R. MACPHERSON Montreal
 103—The Farm by the River.
 104—Edge of the Wood.
- TOM W. McLEAN Toronto
 105—The Voyageurs.
- MISS HELEN G. McNICOLL Westmount
 106—The Artist.
 107—Picking Flowers.
 108—Feeding Chickens.
- C. M. MANLY, A.R.C.A. Toronto
 109—Autumn on the Conestogo (Water-colour).
 110—Dartmoor Weather (Water-colour).
 111—Smother of Waters (Water-colour).
- ~~EDMUND MORRIS, A.R.C.A.~~ *Edmund Morris* Toronto
 112—Rogers Pass, Selkirks (Water-colour).
 113—Woodland (Water-colour).
- ~~M. MATTHEWS, R.C.A.~~ *Edmund Morris* Toronto
 114—The Cove Fields, Quebec.
 115—Cree Lodges in the File Hills.
 116—Little Shield, a Blackfoot Indian.

- MISS LAURA MUNTZ, A.R.C.A. Montreal
 117—The Ghost Story.
 118—Study.
 119—Lady in Black.
 120—In the Wood (Water-colour).
 121—Girl in White (Water-colour).
- HERBERT S. PALMER Toronto
 122—A Conestogo Meadow.
 123—Flitting Shadows.
- F. V. POOLE Toronto
 124—Betty.
 125—Autumn Morning.
- G. A. REID, R.C.A. Toronto
 126—The Homeseekers.
- MRS. M. H. REID, A.R.C.A. Toronto
 127—The Hunters' Moon.
 128—Roses.
 129—Interior.
 130—In An English Garden.
- ALBERT H. ROBINSON, A.R.C.A. Montreal
 131—Sunset, Montreal.
 132—Laurentian Village.
- ARTHUR D. ROSAIRE Westmount
 133—Mount Royal Park.
 134—Gypsies' Arrival.
- G. HORNE RUSSELL, A.R.C.A. Montreal
 135—Portrait of Mrs. A. J. Mackenzie.
- MISS HENRIETTA SHORE Toronto
 136—Sisters.
 137—In the Park.
- CHARLES W. SIMPSON Montreal
 138—Ploughing.

- OWEN STAPLES Toronto
 139—Building a Sky Scraper.
 140—Autumn (Water-colour).
- MISS DOROTHY STEVENS Toronto
 141—Bridge at Florence.
- A. SUZOR-COTE, A.R.C.A. Montreal
 142—Cattle Grazing.
 143—Moonrise in September.
 144—The Road to the Saw Mill.
 145—Primitive Sugar Camp.
- HOMER WATSON, R.C.A. Doon
 146—The Flood Gate.
 147—Crossing the River.
- CURTIS WILLIAMSON, R.C.A. Toronto
 148—Newfoundland Landscape.
 149—Portrait of Mrs. C.
- MISS MARY E. WRINCH Toronto
 150—Sunny Winter Morning.
 151—White Birches.

Etchings, Drawings, Illustrations

- W. W. ALEXANDER Toronto
 152—A Northern Ontario River (Black and White).
 153—Sous le Cap (Etching).
 154—Old Ferry Road, Queenston (Etching).
- E. L. BEAUPRE Toronto
 155—A Day with the Baby (Black and White).
- J. W. BEATTY, A.R.C.A. Toronto
 156—Illustration, Firemen (Black and White).
 157—Illustration, Ship-deck (Black and White).
 158—Illustration, Studio (Black and White).
 159—Illustration, Church (Black and White).
 160—The Seine, Paris (Etching).
 161—Gipsy Van, Holland (Etching).

- F. BRIGDEN Toronto
 162—Old Stage Coach (Black and White).
 163—Rock Bound Coast (Black and White).
 164—Market Place, Toronto (Black and White).
- W. S. BROADHEAD Toronto
 165—Cartoon, Titanic Disaster (Black and White).
 166—Cover Design, Girl's Head (Colour).
 167—Christmas Illustration (Black and White).
 168—Illustration, Burglar (Black and White).
- F. CARMICHAEL Toronto
 169—Decorative Illustration (Colour).
 170—Decorative Illustration (Colour).
- J. W. COTTON Toronto
 171—On Hampstead Heath (Aquatint).
 172—Foresore, St. Ives, Cornwall (Etching).
 173—St. Ives Harbour, Cornwall (Etching).
- CLARENCE A. GAGNON, A.R.C.A. Paris, France
 174—Six Etchings.
 175—Five Etchings.
 176—Old Windmill, St. Briac (Etching).
 177—Isola San Burano, Venice (Etching).
 178—La Salute, Venice (Etching).
 179—Courtyard of San Gregorio, Venice (Etching).
 180—Une Rue a Nemours (Etching).
 181—Old Windmill, Picardy (Etching).
- T. G. GREENE Toronto
 182—Illustration (Black and White).
 183—Illustration (Black and White).
 184—Illustration (Black and White).
- LAUREN S. HARRIS Toronto
 185—Pencil Sketch.
 186—Pencil Sketch.
 187—Pencil Sketch.
 188—Pencil Sketch.
 189—Pencil Sketch.
 190—Pencil Sketch.

- ARTHUR HEMING Toronto
 191—The Fur Trapper (Oil).
 192—The Fur Trader (Oil).
 193—The Fur Trader's Daughter (Oil).
 194—Royal North West Mounted Policeman (Oil).
 195—Study of an Antelope (Crayon).
- C. W. JEFFERYS York Mills
 196—The Round-Up, Alberta (Pen).
 197—After Mass in a Quebec Village (Pen).
- G. D. KELLY Toronto
 198—Storm on Lake Nipissing (Crayon).
 199—The Woodsman (Black and White).
- MISS ESTELLE KERR Toronto
 200—Volendam Fisherman (Black and White).
- IVOR LEWIS Toronto
 201—Monotype.
 202—Monotype.
- ARTHUR LISMER Toronto
 203—Portrait Study (Black and White).
 204—Cathedral Door, St. Jacques, Antwerp (Black and White).
 205—Cathedral Door (Etching).
- MISS MARION LONG Toronto
 206—An Impression, King and Yonge Sts., Toronto (Black and White).
- C. M. MANLY, A.R.C.A. Toronto
 207—Harvesting, Eastern Townships (Black and White).
 208—A City's Water-front (Black and White).
- TOM W. McLEAN Toronto
 209—North Country Study (Black and White).
 210—North Country Study (Black and White).
 211—North Country Study (Black and White).
- E. DARBY MOORE Toronto
 212—Illustration (Black and White).
 213—Illustration (Colour).
 214—Girl and Geese, Poster (Colour).
 215—Decorative Illustration (Black and White).

- F. V. POOLE Toronto
 216—The Last Satyr, Decorative Drawing.
 217—Prehistoric Pig-Sticking.
- G. A. REID, R.C.A. Toronto
 218—Portrait of F. S. Challener, R.C.A. (Monotype).
 219—Study of a Head (Monotype).
- A. H. ROBSON Toronto
 220—Logging on the Gatineau (Black and White).
- CHAS. W. SIMPSON Montreal
 221—

{	Sous le Cap, Quebec (Etching). Sous le Fort, Quebec (Etching). King's Bastion, Quebec (Etching).	}	In Oval Frame.
---	--	---	----------------
- OWEN STAPLES Toronto
 222—Construction of a Bridge (Black and White).
 223—A Railway Cutting (Black and White).
- MISS DOROTHY STEVENS Toronto
 224—Florence (Etching).
 225—Overlooking Florence (Etching).
 226—New Bridge Across St. Lawrence at Quebec (Etching).
 227—Boats at Quebec (Etching).
 228—Odalisque (Etching).
 229—The Coal Chute at Quebec (Etching).
- W. J. THOMSON Toronto
 230—Muggy Night, Lake Ontario (Etching).
 231—Zero Weather (Etching).
 232—The Ridge Road (Etching).
 233—Old Canal, St. Catherine (Etching).
 234—The Grip of Winter (Etching).
- F. H. VARLEY Toronto
 235—Tree Study (Black and White).
 236—Colliers' Wives (Black and White).
- E. WALLCOUSINS Toronto
 237—Illustration (Black and White).
 238—Illustration (Colour).
 239—Illustration (Black and White).

Winnipeg Artists

FREDERICK S. CHALLONER, R.C.A.

- 240—Mounted Cree Indian Fighting.
- 241—Mounted Sioux Indian Fighting.
- 242—Pastel Drawing of Mural Decoration for Theatre.
- 243—Mother Love (Oil).

MRS. ALAN C. EWART, Member of Philadelphia Academy of Fine Arts.

- 245—The Boy With the Cape.

L. LE MOINE FITZGERALD

- 246—Landscape.

C. W. GRAY

- 247—The Axe Grinder (Water-colour).
- 248—Landscape (Water-colour).

MRS. MARION NELSON HOOKER

- 249—Royal Mail from Norway House.
- 250—Old Fireplace.

D. MACQUARRIE

- 251—Evening on the Canal.
- 252—Spring Pastoral.
- 253—Golden Afternoon, Fraser's Grove.
- 254—Wooded Landscape (Water-colour).

J. HENRY STANFORD

- 255—Notre Dame de Paris.

REGINALD F. WHYTE

- 256—Winter in Manitoba.
- 257—Sunset on the Assiniboine.
- 258—Assiniboine River.
- 259—River at Deer Lodge.

MRS. GEORGIE M. WILCOX

- 260—Still Life.

MEAVE O'BYRNE DOGGETT

- | | | | |
|------|---|------------------------------|--------------|
| 261— | { | (Limoges Enamel Panels). | } In Cabinet |
| | | The Lady Shinain. | |
| | | The Sunbeam. | |
| | | The Spirit of the Raincloud. | |
| | | (Baisse-Taille). | |
| | | Tryptych—St. Columcille. | |

Supplementary List

E. WYLIE GRIER, R.C.A.

262—Prof. Mackenzie (Charcoal Drawing).

263—Head (Charcoal Drawing).

R. HOLMES

264—The Back Door (Pen and Ink).

265—Spearing Sturgeon, Niagara River (Wash Drawing).

FERGUS KYLE

266—Caught in the Orchard (Pen and Ink)

267—Landing on the Jamb (Wash Drawing)

DUDLEY WARD

268—In Dingbat Land (Water-colour).

269—Dingbat Land (Water-colour).

270—Dingbat Land (Water-colour).

271—Dingbat Land (Water-colour).

272—Dingbat Land (Water-colour).

Miniatures

MRS. A. W. CRAWFORD

273—Isabel and Elizabeth.

Lent by J. D. Atcheson, Esq.

274—Portrait of A. W. Crawford, Esq.

275—Study.

