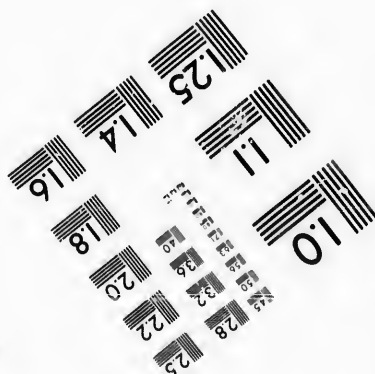
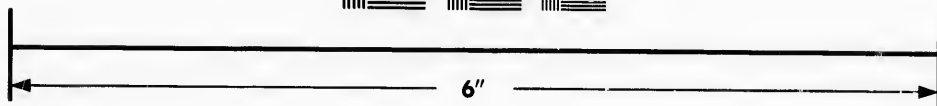
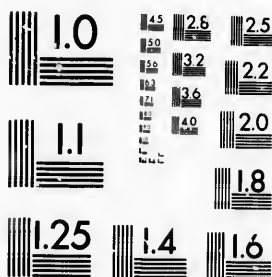


**IMAGE EVALUATION
TEST TARGET (MT-3)**



**Photographic
Sciences
Corporation**

23 WEST MAIN STREET
WEBSTER, N.Y. 14580
(716) 872-4503

24 28 25
20 32 22
18 16 14

**CIHM/ICMH
Microfiche
Series.**

**CIHM/ICMH
Collection de
microfiches.**



Canadian Institute for Historical Microreproductions / Institut canadien de microreproductions historiques

10

© 1987

Technical and Bibliographic Notes/Notes techniques et bibliographiques

The Institute has attempted to obtain the best original copy available for filming. Features of this copy which may be bibliographically unique, which may alter any of the images in the reproduction, or which may significantly change the usual method of filming, are checked below.

L'Institut a microfilmé le meilleur exemplaire qu'il lui a été possible de se procurer. Les détails de cet exemplaire qui sont peut-être uniques du point de vue bibliographique, qui peuvent modifier une image reproduite, ou qui peuvent exiger une modification dans la méthode normale de filmage sont indiqués ci-dessous.

- | | |
|--|--|
| <input checked="" type="checkbox"/> Coloured covers/
Couverture de couleur | <input type="checkbox"/> Coloured pages/
Pages de couleur |
| <input type="checkbox"/> Covers damaged/
Couverture endommagée | <input type="checkbox"/> Pages damaged/
Pages endommagées |
| <input type="checkbox"/> Covers restored and/or laminated/
Couverture restaurée et/ou pelliculée | <input type="checkbox"/> Pages restored and/or laminated/
Pages restaurées et/ou pelliculées |
| <input type="checkbox"/> Cover title missing/
Le titre de couverture manque | <input checked="" type="checkbox"/> Pages discoloured, stained or foxed/
Pages décolorées, tachetées ou piquées |
| <input type="checkbox"/> Coloured maps/
Cartes géographiques en couleur | <input type="checkbox"/> Pages detached/
Pages détachées |
| <input type="checkbox"/> Coloured ink (i.e. other than blue or black)/
Encre de couleur (i.e. autre que bleue ou noire) | <input checked="" type="checkbox"/> Showthrough/
Transparence |
| <input type="checkbox"/> Coloured plates and/or illustrations/
Planches et/ou illustrations en couleur | <input type="checkbox"/> Quality of print varies/
Qualité inégale de l'impression |
| <input checked="" type="checkbox"/> Bound with other material/
Relié avec d'autres documents | <input type="checkbox"/> Includes supplementary material/
Comprend du matériel supplémentaire |
| <input type="checkbox"/> Tight binding may cause shadows or distortion
along interior margin/
La reliure serrée peut causer de l'ombre ou de la
distorsion le long de la marge intérieure | <input type="checkbox"/> Only edition available/
Seule édition disponible |
| <input type="checkbox"/> Blank leaves added during restoration may
appear within the text. Whenever possible, these
have been omitted from filming/
Il se peut que certaines pages blanches ajoutées
lors d'une restauration apparaissent dans le texte,
mais, lorsque cela était possible, ces pages n'ont
pas été filmées. | <input type="checkbox"/> Pages wholly or partially obscured by errata
slips, tissues, etc., have been refilmed to
ensure the best possible image/
Les pages totalement ou partiellement
obscurcies par un feuillet d'errata, une pelure,
etc., ont été filmées à nouveau de façon à
obtenir la meilleure image possible. |
| <input type="checkbox"/> Additional comments:/
Commentaires supplémentaires: | |

This item is filmed at the reduction ratio checked below/
Ce document est filmé au taux de réduction indiqué ci-dessous.

10X	12X	14X	16X	18X	20X	22X	24X	26X	28X	30X	32X
					/						

The copy filmed here has been reproduced thanks to the generosity of:

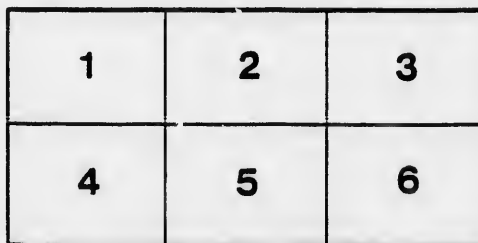
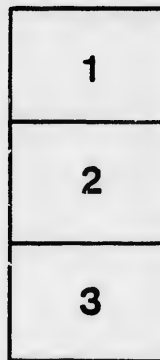
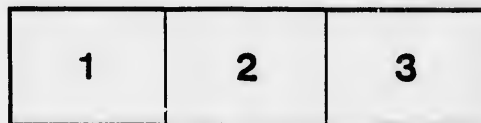
D. B. Weldon Library
University of Western Ontario
(Regional History Room)

The images appearing here are the best quality possible considering the condition and legibility of the original copy and in keeping with the filming contract specifications.

Original copies in printed paper covers are filmed beginning with the front cover and ending on the last page with a printed or illustrated impression, or the back cover when appropriate. All other original copies are filmed beginning on the first page with a printed or illustrated impression, and ending on the last page with a printed or illustrated impression.

The last recorded frame on each microfiche shall contain the symbol \rightarrow (meaning "CONTINUED"), or the symbol ∇ (meaning "END"), whichever applies.

Maps, plates, charts, etc., may be filmed at different reduction ratios. Those too large to be entirely included in one exposure are filmed beginning in the upper left hand corner, left to right and top to bottom, as many frames as required. The following diagrams illustrate the method:



L'exemplaire filmé fut reproduit grâce à la générosité de:

D. B. Weldon Library
University of Western Ontario
(Regional History Room)

Les images suivantes ont été reproduites avec le plus grand soin, compte tenu de la condition et de la netteté de l'exemplaire filmé, et en conformité avec les conditions du contrat de filmage.

Les exemplaires originaux dont la couverture en papier est imprimée sont filmés en commençant par le premier feuillet et en terminant soit par la dernière page qui comporte une empreinte d'impression ou d'illustration, soit par le second feuillet, selon le cas. Tous les autres exemplaires originaux sont filmés en commençant par la première page qui comporte une empreinte d'impression ou d'illustration et en terminant par la dernière page qui comporte une telle empreinte.

Un des symboles suivants apparaîtra sur la dernière image de chaque microfiche, selon le cas: le symbole \rightarrow signifie "A SUIVRE", le symbole ∇ signifie "FIN".

Les cartes, planches, tableaux, etc., peuvent être filmés à des taux de réduction différents. Lorsque le document est trop grand pour être reproduit en un seul cliché, il est filmé à partir de l'angle supérieur gauche, de gauche à droite, et de haut en bas, en prenant le nombre d'images nécessaire. Les diagrammes suivants illustrent la méthode.

No 1 my Clerk Pease

LIST OF VOTERS

FOR THE

TOWN OF STRATHROY

FOR THE

YEAR 1889.

*Recd & filed
La. Officer C. H. Pease
Oct 19/89
C. H. Johnson
C. H. Pease
per D.*

STRATHROY, ONT.

Printed at THE AGE Printing House, Front Street.
1889.

SCHEDULE OF POST OFFICES.

- | | |
|---------------|------------------|
| 1. STRATHROY. | 14. BRANTFORD. |
| 2. ADELAIDE. | 15. TORONTO. |
| 4. LONDON. | 16. SARNIA. |
| 5. PETROLIA. | 18. WATFORD. |
| 6. EXETER. | 20. OIL SPRINGS. |
| 8. INGERSOLL. | 21. CHATHAM. |
| 9. NEWBURY. | 22. HAMILTON. |
| 10. LOBO. | 23. WOODSTOCK. |
| 11. GLENCOE. | 24. WATERLOO. |
| 12. ARKONA. | |

The following is a Key to the Abbreviations used throughout the Entire List of Voters, viz. :

- | | |
|-------------------------|--------------------------|
| 1. McK & McR Sy. means, | McKellar & McRae Survey. |
| 2. J & W Sy | Johnston & Winlow |
| 3. S Sy | Saulsbury |
| 4. B Sy | Blackburn |
| 5. S & K Sy | Street & Keefer |
| 6. A & K Sy | Althouse & Kittredge |
| 7. R & G Sy | Reid & Gregory |
| 8. K Sy | Kittredge |
| 9. C Sy | Crealey |
| 10. A Sy | Armstrong |
| 11. T & L Co Sy | Trust & Loan Co. |
| 12. R Sy | Rapley |

T

Comprised
and S

PAR

Jur.	Roll	
	No.	
J	8	A
J	31	F
	1056	C
J	135	C
	136	C
	137	C
J	137	C
J	145	C
J	156	C
J	162	C
J	170	C
J	180	C
	182	C
	206	F
J	207	F
	208	F
J	209	F
J	212	F
J	214	F
J	219	F
	225	F
J	233	F
J	235	F
	253	F
J	258	F
	267	F
	268	F

VOTERS' LIST FOR 1889, Town of Strathroy

Polling Sub-Division No. 1,

Comprising all that part of the Town lying West of McKellar and Richmond Streets,
and South of the road allowance between 4th and 5th Concessions of Adelaide.
Polling place, Maitland Street School House.

PART 1.—Persons entitled to Vote at BOTH Municipal Elections and Elections to the Legislative Assembly.

Jur.	Roll No.	NAME.	Concession or Street.	No. of Lot or Part Lot.	Other Description.	P.O.
J	8	Ashwell, George	J & W sy	28, 30	M F and F	1
J	31	Bowley, Jas	W Oxford	43 to 48	M F and F	1
	1056	Carson, Joseph S	con 5	pt 20	M F and F	1
J	135	Clarke, Gilbert	W McKellar	3, 4	M F and F	1
	136	Campbell, Ed	A sy	25, 26	M F and T	1
	137	Calcut, John	A sy	22	M F and T	1
J	137	Calcut, John W	A sy	22	M F and F	1
J	145	Copeland, James	con 5	pt 20	M F and F	1
J	156	Campbell, W C	S Albert	pt 25	M F and T	1
J	162	Cameron, James	S Albert	5	M F and F	1
J	170	Cameron, D M	S Albert	19	M F and T	1
J	180	Cain, William	Corneil sy	5	M F and T	1
	182	Cook, Solomon	W McKellar	45	M F and T	1
	206	Dalton, John	S Metcalfe	pts 8, 9	M F and F	1
J	207	Dalton, Dukes	W Milner	41, 42	M F and F	1
	208	Degroat, Harvey	W Milner	47	M F and F	1
J	209	Deavitt, Alex S	W McKellar	9 and 10	M F and T	1
J	212	Doan, Wm R	T & L sy	6	M F and T	1
J	214	Davis, David	S Albert, Yo'ng sy	6 to 9	M F and F	1
J	219	Degroat, Chas A	S Albert	24	M F and T	1
	225	Dell, Hiram	E Oxford	30	M F and O	1
J	223	Drynan, William	E Oxford	18	M F and F	1
J	235	Dickenson, R	E Oxford	16	M F and F	1
	253	Ellico, Charles	con 10	S E pt 11	M F and F	1
J	257	Evoy, George	S Albert	5	M F and F	1
	267	Evaps, David	S Albert	4	M F and T	1
	268	Evans, Frank F	con 5	N E pt 21	M F and T	1

POLLING SUB-DIVISION No. 1.

Jur.	Roll No.	NAME.	Concession or Street.	No of Lot or Part Lot.	Other Description.	P.O.
J	662	McCoy, Robert	Syd place	12, 13, 14	M F and F	1
J	887	McCrow, Thos	N North 4	pt 22	M F and F	1
J	698	Nicholl, P H	con 5	pt 20	M F and F	1
J	700	Noble, James	W Oxford	plot	M F and F	1
J	701	Noble, D C	W Oxford	plot	M F and F	1
W	713	Neal, Thomas	W McKellar	4, 5	M F and T	1
J	714	Neal, Geo H	W McKellar	18	M F and F	1
J	725	O'Dwyer, Michael	T & L sy	9	M F and F	1
J	726	Owens, Henry	F Oak Av	5, 6, 7	M F and F	1
J	727	Owens, Chas H	T & L sy	pt 4	M F and F	1
J	730	O'Neil, J H	E Richmond	55, 53	M F and O	1
J	733	O'Dwyer, Patrick	E Oxford	19	M F and T	1
	749	Park, Edward	W Milner	pt lot 1	M F and F	1
J	763	Pool, Albert E	E Oxford	pt 17	M F and T	1
W	787	Ratlidge, Wm H	A sy	18, 19	M F and T	1
J	792	Richards, Robt	con 5	pt 21	M F and O	1
	805	Raymond, John	E Oxford	49	M F and F	1
	810	Reynolds, S P	Sydenham place	15	M F and T	1
	818	Richardson, Geo	Corneil sy	4	M F and T	1
J	824	Riscborough, W J	N Duke	52	M F and T	1
J	826	Ray, S H	W McKellar	5, 6	M F and F	1
	830	Robertson, John	W Oxford	pt 7	M F and F	1
J	849	Steer, George	S Metcalfe	pt 4	M F and F	1
J	850	Salsbury, Chas	E Milner	21, 22, 23	M F and T	1
J	851	Saxton, Frank B	W McKellar	2	M F and T	1
W	852	Sinclair, Archie	W McKellar	pts 10, 11	M F and T	1
J	858	Smith, Henry	E Oak av	16, 18, 19	M F and F	1
J	868	Smith, Wm C	N Maitland	10, 11	M F and T	1
	872	Shields, John	Hyman sy	pt 1	M F and F	1
J	889	Smith, Jas W	W Oxford	62, 63	M F and F	1
J	860	Smith, L H	E Oxford	58 to 61	M F and T	1
J	1065	Sced, Wm J	E Oxford	S hf 17	M F and T	1
J	935	Tyler, John	E Oak av	23, 24, 25	M F and F	1
J	945	Thomson, James	Corneil sy	pt 7	M F and O	1
	956	Trothen, Wm	W McKellar	16	M F and F	1
W	965	Uphart, Alex	W McKellar	4, 5	M F and T	1
J	989	Walker, Joseph	W Milner	park 1	M F and F	1
J	990	Whyte, E A	W Milner	51, 52, 54 to 60	M F and F	1
J	994	Wilson, Wm	S Maitland	39	M F and T	1
J	1014	Weeks, George	Hyman sy	15 to 18, &c	M F and F	1
J	999	Weeks, John	W Oxford	74, 75	M F and F	1
J	1042	Young, Geo	Young sy	pt 21	M F and F	1

PART II.—Persons entitled to Vote at Municipal Elections ONLY

Jur.	Roll No.	NAME.	Concession or Street.	No of Lot or Part Lot.	Other Description.	P.O.
	18	Avery, Wm	T & L sy	pt 4	F.	1
	524	Auld, Adam	S Albert	23	F.	1
	304	Beer, Jacob C	S & K sy	10	F.	1
	76	Brown, Eliza	N Burns	4	F.	1
	335	Brown, Isabella	S Metcalfe		F.	2
	136	Campbell, W A	A sy	25, 26	F.	1
	157	Crawford, Isabel	S Albert	25	T.	1
	160	Corneil, J M	W Oxford	81 to 93	F.	11
	205	Cook, James	S Metcalfe	6	F.	Forest
	209	Campbell, W A	W McKellar	9, 10	F.	Springbank
	205	Dyke, Jane	S Metcalfe	6	T.	1
	232	Dawson, Wm	S Albert	3	F.	1
	295	Folinsbee, Mary A	E Oxford	19	T.	1
	296	Frank, H G	E Oxford	34, 50, 51	F.	1
	758	Ferguson, James	Corneil sy	pt 1, 3	F.	1
	787	Graham, Dr	A sy	18, 19	F.	4
	355	Gunn, John	S & K sy of 10	9, 10	F.	12
	356	Gunn, Hector			F.	12
	357	Murray, W H			F.	1
	400	Harker, Margaret	E Milner	24, 25	F.	1
	503	Kittredge, A H	S & K sy of 10	1	F.	1
	524	Livingstone, Mary	S Albert	23	T.	1
	581	Morgan, John	Corneil sy	pt 7	F.	1
	647	McIntyre, Agnes	S Albert	20, 21, 22	F.	1
	673	McIntosh, J M	W Oxford	35 to 38	F.	N Y
	883	McCallum, Ann	Corneil sy	6	F.	11
	720	Nugent, Dr E	E Oxford	76 to 80	F.	U S
	768	Pullen, George	Hyman sy	pt 1	F.	2
	772	Pineombe, R.	con 4	pt 23, 24	O.	1
	827	Roach, B G	W Oak av	2 to 14	F.	1
	268	Snell, W F	con 5	pt 21	F.	1
	447	Saul, Ann	con 5	pt 21	F.	1
	853	Sinclair, M A	W McKellar	16 to 40	F.	1
	854	Sinclair, Dugald	W McKellar	8	F.	1
	860	Stevenson, Mary	T & L sy	7	F.	1
	884	Smythe, Harriet	E Oxford	pt 1, 3	T.	1

Jur. Roll No.
928
940
957
12

1041

1043

PA

61

62

63

161

181

204

237

297

298

475

517

518

596

598

646

717

719

786

788

793

794

795

807

867

869

873

874

993

1006

1015

POLLING SUB-DIVISION No. 1.

NLY
 her
 iption. P.O.
 1
 1
 2
 1
 1
 1
 11
 Forest
 Springbank
 1
 1
 1
 4
 12
 12
 1
 1
 1
 1
 1
 N Y
 11
 U S
 2
 1
 1
 1
 1
 1
 1

Roll No.	NAME.	Concession or Street.	No of Lot or Part Lot.	Other Description.	P.O.
928	Thomson, Arch	S Maitland	40, 41, 42	F	1
946	Thompson, John	Corneil sy	pt 7	F	11
957	Tomlinson, Wm	A sy	5, 6	F	U S
12	Thompson, J H Rev	con 5	pt 20	F	1
1041	Widdis, Robert	con 5	pt 20	F	U S
1043	Young, Ellen	con 5	pt 21	F	1

PART III.—Persons entitled to Vote at Elections to the Legislative Assembly ONLY.

61	Booker, John	con 5	pt 21	M F	1
62	Booker, Isaac	con 5	pt 21	M F	1
63	Booker, Jas H	con 5	pt 21	M F	1
161	<i>Bowley W.R</i> Crampton, Wm J	<i>w. Oak</i> E Oxford	<i>43</i> 49	<i>u</i> M F	<i>1</i> 1
181	Cain, John	Corneil sy	5	M F	1
204	Davidson, R H	E Milner	pt 2	M F	1
237	<i>Drnan W.R</i> Emmons, Samuel	<i>E Oak</i> Young sy	<i>18</i> 10	<i>u</i> M F	<i>7</i> 1
297	<i>Wisem Gelf</i> Portner, Jas F	<i>Flava mill</i> E Oxford	<i>u</i> 50, 51, 34	<i>u</i> M F	<i>1</i> 1
298	Portner, Herman	E Oxford	50, 51, 34	M F	1
475	<i>Portner Edw</i> Jackson, John	<i>u</i> W Milner	<i>u</i> 48	<i>u</i> F	<i>1</i> 1
517	Lindsley, Joseph	E Oak av	20		1
518	Lindsley, Geo W	E Oak av	17		1
596	<i>Said R.M</i> Merner, Samuel	<i>w. Rich</i> W Oak av	<i>pt 7 E.</i> 24		1
598	Murphy, Daniel	N Burns	2		1
646	McLellan, James	W McKellar	7		1
717	<i>Maitland H.B.</i> Nixon, John	<i>w. Oak</i> con 5	<i>71</i> pt 21	<i>u</i> M F	<i>1</i> 1
719	Nicholls, Jas E	E Oxford	49	M F	1
786	<i>Overholt Chas</i> Root, Richard	<i>Flava mill</i> E Milner	<i>u</i> 30	<i>u</i> M F	<i>1</i> 1
788	Rutledge, Wm	N Metcalfe	1, 2, 3, 4	M F	1
793	Richards, John	con 5	pt 21	M F	1
794	Richards, Robt E	con 5	pt 21	M F	1
795	Ross, Peter	con 5	pt 21	M F	1
807	Raymond, Albert E	E Oxford	49	M F	1
867	<i>Rugmond Jus</i> Stevens, Robt F	<i>u</i> J & W sy	<i>u</i> pt 56, 57	<i>u</i> M F	<i>7</i> 1
869	Steele, Emerous	R R grounds		M F	1
873	Scott, William	W Oxford	74, 75	M F	1
874	Scott, John	W Oxford	74, 75	M F	1
993	Whimp, John	S Duke	57	M F	1
1006	Watson, Ernest P	E Oxford	3	M F	1
1015	Weeks, Robert	Hyman sy	15 to 18	M F	1

Polling Sub-Division No. 2,

Comprising all that part of the Town lying West of Maria Street to its intersection at the side road, thence West thereof and North of the road allowance between the 4th and 5th Concessions of Adelaide.

Polling place, at or near R. P. Smith's Coach House.

PART 1.—Persons entitled to Vote at BOTH Municipal Elections and Elections to the Legislative Assembly.

Jur.	Roll No.	NAME.	Concession or Street.	No of Lot or Part Lot.	Other Description.	P.O.
J	56	Bishop, George	N Sals'y 4	part 20	M F and F.	1
J	58	Barclay, Joshua E.	Victoria	15, 16	M F and F.	1
J	64	Baskerville, Thomas	4	pt 20	M F and T.	1
J	65	Baskerville, John W	Crealy sy	5, 6	M F and F.	1
J	83	Butler, James	S North, &c.	4	M F and T.	1
J	84	Banks, John	N North	E pt 2	M F and T.	1
J	1051	Brown, D M	con 4	pt 21	M F and F.	1
	133	Cummings, John	Sals'y sy	8	M F and F.	1
J	139	Campbell, John	Dewan st	pt 26	M F and F.	1
J	140	Challoner, Thos S	Dewan st	25	M F and F.	1
J	171	Clark John R	E Emily	7, 3	M F and F.	1
J	178	Crealey, Truman	N Albert	pt 20	M F and F.	1
	213	Doak, William O.	Sals'y sy	S pt 25	M F and O.	1
J	227	Donley, J S	W Maria	pt 13	M F and T.	1
J	236	Dampier, L H	N Front	E pt 17	M F and T.	1
J	255	Eakins, Joseph	Dewan sy	pt 26	M F and F.	1
J	259	Eastman, Wesley H.	4	pt W 4 21	M F and T.	1
J	270	Eakins, Sam A.	S Front	N hf 8	M F and T.	1
J	272	Evans, John H.	S North	9	M F and F.	1
J	338	Gett, David	con 4	pt 20	M F and F.	1
J	359	Greenaway, Chas.	Rapley sy	5	M F and F.	1
J	360	German, G G	Rapley sy	15	M F and F.	1
J	366	Gott, Wm	N North	2	M F and F.	1
J	367	Grist, Charles	W Victoria	1	M F and O.	1
J	377	Hanley, J H.	N North	13	M F and F.	1
J	401	Harris, Wm	Sals'y sy	pt 5	M F and F.	1
J	402	Hutton, G Y	W Victoria	pt A and 10	M F and F.	1
J	407	Hardy, Nelson	4	pt 21	M F and T.	1
J	426	Hilton, Friend	N Albert	37	M F and F.	1
J	429	Hunter, Robt	4	pt 22	M F and T.	1
J	441	Hilton, Alex.	W Emily	5, 6	M F and F.	1
J	445	Hughes, Fred P	S Front	E pt 12	M F and T.	1
J	448	Hoskin, Fred T	Sals'y sy	4	M F and F.	1

Jur. Roll No.

J 465

J 525

526

J 538

J 529

583

J 608

J 682

J 648

666

668

672

J 623

J 703

J 699

716

J 722

J 728

753

J 798

J 790

808

815

J 816

J 862

J 863

J 885

J 887

J 896

J 906

J 909

J 910

917

J 1069

936

939

948

J 954

J 962

967

J 991

J 992

POLLING SUB-DIVISION No. 2.

Jur.	Roll No.	NAME.	Concession or Etreet.	No. of Lot or Part Lot.	Other Description.	P.O.
J	465	Ivor, John	con 4	pt 22	M F and F	1
J	525	Leonard, Michael	N Centre	39	M F and F	1
	526	Lenfestey, John	S Front	9, 10	M F and F	1
J	538	Leitch, D L	W Rapley	9	M F and F	1
J	529	Learoyd, A D	con 4	pt 21	M F and O	1
	583	Moore, Francis	N North	14	M F and F	1
J	608	Manson, Jas	Rapley sy	3	M F and F	1
J	682	Macraut, J S	N Front	pt 16	M F and T	1
	648	McIntyre, Peter	con 4	pt 20	M F and F	1
W	666	McDonah, Rev W	N Front	13, 14	M F and O	1
	668	McCull, Hugh	W Victoria, S sy	20, 21	M F and F	1
	672	McIntosh, J H	S Front	S hf 8	M F and T	1
J	623	McDonald, J E	con 4	pt 21	M F and T	1
J	703	Nicholson, James	4	pt 20	M F & F S	1
J	699	Nicholson, Henry	Rapley sy	5, 6	M F and F	1
	716	Nicholls, John T	con 4	pt 22	M F and F	1
J	722	Nicholson, Robert	con 4	pt 20	M F and F	1
J	728	Orchard, Geo W	W Victoria, S sy	2	M F and F	
	753	Petch, Francis	con 4	pt 22	M F and F	1
J	798	Robinson, Walter	Rapley sy	7, 8	M F and T	1
J	790	Reid, William	W Victoria	C pt A	M F and T	1
	803	Rowland, Edward sr	N North	pt 2	M F and F	1
	815	Rapley, Wm	Rapley sy	2	M F and F	1
J	816	Rapley, Manfred	S Front	13	M F and T	1
J	862	Seed, Hugh	Sals'y sy	6	M F and F	1
J	863	Stacey, Thos	W Dewan	12	M F and T	1
J	885	Sherman, W G	E Emily	7, 8	M F and T	1
J	887	Sutherland, R	N North	4, pt 22	M F and O	1
W	896	Sutherland, Allan	S North	15	M F and T	1
J	906	Smith, W Thomson	N Albert	E hf 12	M F and F	1
J	909	Snell, Wm F	N Albert	10, 11	M F and F	1
J	910	Springer, Monno	S Front	W hf 12	M F and T	1
	917	Smith, R I	W Rapley	10, 11, 12	M F and F	1
J	1069	Scott, Chester G	W Victoria	4, pt 21	M F and O	1
	936	Thompson, Jas	W Victoria	E pt 3	M F and F	1
	939	Thrower, Isaac	W Victoria, S sy	19	M F and F	1
	948	Thompson, Dr A	N Front	14	M F and F	1
J	954	Taylor, Richard G	N Centre	30	M F and T	1
J	962	Taylor, James F	N Front	16, 17	M F and T	1
	967	Urquhart, Hector	N Albert	38	M F and F	1
J	991	Weeks, George	N Salsbury, S sy	9	M F and F	1
J	992	Walker, W B	Rapley sy	4	M F and F	1

Jur. Roll No.	NAME.	Concession or Street.	No of Lot or Part Lot.	Other Description.	P.O.
J 995	Williams, Michael	N Albert	36	M F and T.	1
J 997	Woodhull, C W	con 4	pt 20	M F and F.	1
998	Williston, Rev J K.	con 4	pt 21	M F and F.	1
1007	Wray, William	N North	1	M F and F.	1
1010	Winters, Thos B	N Front, Reid sy	13	M F and T.	1
1038	Wetherell, J E.	W Emily	5, 6.	M F and F.	1

PART II.—Persons entitled to Vote at Municipal Elections ONLY

7	Anderson, Christina	Dewan sy	26.	F.	1
57	Bolton, Ann	Salsb'y sy	7	F.	1
59	Brown, Eliza	Victoria St	18	F.	1
1010	Buttery, Joseph	N Front.	13.	F.	1
1051	Brown, Thomas	4	pt 21	F.	4
146	Crealy, Eliza A	4	pt 20	F.	1
141	Croucher, Agnes J	Dewan St	11.	F.	1
174	Cameron, Catherine	N Front	15	F.	1
175	Cameron, Annie			F.	1
176	Cameron, Jessie			F.	1
177	Cameron, Kate			F.	1
214	Doak, Jane	Dewan St	15.	F.	1
259	Eastman, Chester	4	pt 21	F.	U S
261	Elliott, Wm H	J & W sy	8, 9	O.	1
261	Elliott, John A	J & W sy	8, 9	F.	U S
1070	Elliott, Charles	W Carrie	pk lot 1	F.	4
368	Griffith, Eli	Rapley sy	1, 2, 3, 4.	T.	1
375	Grant, W H	W Victoria	pt A	F.	15
272	Humphreys, Samuel	T & L Co. of 6.		F.	1
476	James, Thomas	Rapley sy	7	F.	1
505	Lee, Mary	W Carrie	3	F.	U S
512	Lindsay, John	E Oak av	13, 14	F.	1
537	Lightfoot, Wm	E Rapley	16	F.	1
542	Lewis, W T B	con 4	pt 20	F.	2
649	McNeil, Ann	W Dewan	25	F.	1
752	Phillips, Frances	W Victoria	B	F.	1
769	Parker, James	Crealy sy	1, 2, 3, 4.	F.	1
64	Rowland, E	con 4	pt 20	F.	1
809	Raison, Elizabeth	N North	15.	F.	1
831	Robertson, Elizabeth	E Rapley	pt 14	T.	1
871	Shepherd, Ann J	4	pt 20	F.	2
1068	Smith, Wm	Crealy sy	16 to 20	F.	2

W Scatcherd Alan n. Front 15 F. 4

POLLING SUB-DIVISION No. 2.

Other
escription. P.O.
M F and T.. 1
M F and F.. 1
M F and F.. 1
M F and F.. 1
M F and T.. 1
M F and F.. 1

Jur.	Roll No.	NAME.	Concession or Street.	No of Lot or Part Lot.	Other Description.	P.O.
	961	Thompson, Geo	Rapley sy	8, 9	F	2
	267	Thomson, Archie	S Albert	4	F	1
	1012	Waite, David	W Maria	13, 14	F	1
	1048	Zavitz, Sophia	W Victoria	Blk A	F	1

s ONLY

F..... 1
F..... 1
F..... 1
F..... 4

PART III.—Persons entitled to Vote at Elections to the Legislative Assembly ONLY.

F..... 1
F..... 1
F..... 1
F..... 1
F..... 1
F..... 1

	60	Barron, John	Victoria St	17	M F	1
	255	Eakins, Joseph jr	Dewan St	pt 26	M F	1
	428	Hunter, George	con 4	pt 22	M F	1
	695	<i>Hawley John A. jr n. north</i>		18	"	1
	696	McLellan, Dougald	W Carri	3	M F	1
	696	McLellan, Alex	N Front	14	M F	1
	569	Munro, Alex	Dewan St	26	M F	1

F..... 1
F..... U S
O..... 1
F..... U S
F..... 4

	729	Orchard, Geo W	W Victoria	2	M F	1
	761	Phillips, Anthony R.	N Front	12	M F	1
	815	Rapley, Herbert S	Rapley sy	2	M F	1
	864	Stacey, William	W Dewan	12	M F	1

W Stephens Victor Rapley of 3

F..... U S
F..... 1
F..... 1
F..... 2



F..... 1
F..... 1
F..... 1
F..... 1
T..... 1

F..... 2
F..... 2
4

Polling Sub-Division No. 3,

Comprising all that part of the Town lying West of Caradoc Street, North of Centre Street to Frank Street, thence north of James Street to Maria Street and its intersection with the side road.

Polling place at Town Hall.

PART 1.—Persons entitled to Vote at BOTH Municipal Elections and Elections to the Legislative Assembly.

Jur.	Roll No.	NAME.	Concession or Street.	No of Lot or Part Lot.	Other Description.	P.O.
J	14	Alexander, James	S Front	S	M F and T	1
J	18	Avery, William	N Centre	45	M F and F	1
J	19	Avery, Richard	N Centre	pt 44	M F and T	1
	38	Black, John	W Frank	48, 49	M F and F	1
	34	Bettridge, Wm Dr	N Front	9, 10	M F and F	1
J	81	Bailey, Thos	S Centre	76	M F and F	1
J	87	Banks, Thomas	S Front	W hf 15	M F and T	1
	90	Bixel, Matthew	N Front	rear T U V W	M F and F	1
J	92	Barry, James	N Front	pts 1 & X	M F and T	1
J	91	Barry, John	N Front	pts 1 & 2 & rear	M F and F	1
J	96	Bishop, William	S Front	Queens	M F and F	1
J	97	McPherson, Alex			M F and T	1
J	101	Bray, Chas	E Caradoc	8 of 51	M F and T	1
	105	Brown, Rev Geo	S Front	pt 17	M F and T	1
J	154	Coghlan, Richard	N Centre	51, 52	M F and F	1
J	135	Cooper, Charles	S Centre	pt 74	M F and T	1
J	163	Chalmers, James	N North	pt 11	M F and T	1
J	169	Cross, Wm	N Front	pt V	M F and T	1
J	173	Case, Ben A	N Front	pt X	M F and T	1
J	183	Contts, Robt H	N North	pt 8	M F and T	1
J	186	Challoner, W L	S Front	pt 23	M F and T	1
J	187	Mitchell, A H			M F and T	1
J	189	Collins, Wm G	N Front	pt 7, &c	M F and F	1
J	190	Collins, Stephen	N Front	pt 7, &c	M F and O	1
	1052	Cook, Samuel A	S Front	pt 17	M F and T	1
J	230	Dewar, William	Kittredge Av	19	M F and T	1
J	232	Dawson, William	N Front	pt X	M F and T	1
	238	Dayfoot, Rev P K	S Front	pt 14	M F and T	1
	245	Dugroat, James	N North	E 1/8	M F and F	1
<i>W</i>	J1024	Dubeis, John	N Centre	43	M F and F	1
J	292	Fitzpatrick, Thos	N Centre	S T	M F and F	1
J	305	Ferguson, Wm	S Front	17, 18	M F and T	1
J	313	Fawcett, W F	Kittredge Av	13 to 18, &c	M F and O	1
J	314	Forman, T A	N Front	E pt W	M F and T	1
<i>W</i>	J 315	Forman, W C			M F and T	1

Jur. Roll No.

J 343 C
J 344 C
J 352 C
J 362 C
J 368 C
J 369 C

439 F
442 F
J 443 F

J 466 I
J 467 I
J 468 I
J 469 I

J 479 J
J 480 J
481 J
J 486 J

J 527 L
J 528 L
530 L
J 532 L
J 533 L
J 534 L

J 578 M
584 M
J 601 M
J 604 M
J 605 R
J 606 M
J 600 M
J 611 M
613 M
J 614 M

657 M
J 658 M
660 M
J 662 M
J 671 M
J 676 M
J 677 M
J 680 M
J 681 M
J 686 M

J 702 N

J 732 O

J 762 Pa
J 683 Pa

POLLING SUB-DIVISION No. 3.

Jur.	Roll No.	NAME.	Concession or Street.	No. of Lot or Part Lot.	Other Description.	P.O.
J	343	Green, William	N Centre	pt 46	M F and T	1
J	344	Goodison, John	N Centre	41, 42	M F and T	1
J	352	Geddes, Wm	N Front	pt U	M F and T	1
J	362	Gustin, Geo M	S Front	pt 17, 18	M F and T	1
J	368	Griffith, Eli	S Front	19	M F and T	1
J	369	Graham, Geo	N Front	pt 7, 2nd flat	M F and T	1
	439	Healey, Wm H	N Front	pt U, 2nd flat	M F and T	1
	442	Harrison, F L	N North	10	M F and F	1
J	443	Harrison, Frank	N Front	rd lot	M F and F	1
J	466	Ivor, David	N Front	pt 1	M F and T	1
J	467	Ivor, Frank			M F and T	1
J	468	Ivor, Sidney			M F and T	1
J	469	Irwin, John	S Front	26 & V	M F and T	1
W	479	Johnston, J R	N Centre	S T	M F and T	1
J	480	Jay, Charles C	N Centre	pt 44	M F and T	1
J	481	Johnston, Alex	Kittredge Av	27, 28	M F and F	1
J	486	Jay, Wm H	S Front	pt 22	M F and T	1
J	527	Lamotte, George	S Centre	72	M F and F	1
J	528	Lee, Albert E	N Front	pt U	M F and T	1
	530	Lindsay, W B	N Front	12	M F and F	1
J	532	Legallee, Thomas	S North		M F and F	1
J	533	Lea, Wm B	S Front	pt U	M F and T	1
J	534	Lauler, Jacob E	N Front	11	M F and O	1
J	578	Mathers, Wesley	N Cen're	pt 47	M F and T	1
	584	Mason, Wm	con 4	pt 22	M F and T	1
J	601	Meek, Fred W	N Front	pt X	M F and T	1
J	604	Murray, Wm G	N Front	pt 1	M F and T	1
J	605	Rose, Hugh			M F and T	1
J	606	Matthews, P H	N Front	pt 1, 2nd flat	M F and T	1
J	600	Meekison, A	S Front	pt V	M F and F	1
J	611	Meekison, J D	S Front	pt V	M F and T	1
	613	Mallon, John	E Thomas	74	M F and F	1
J	614	Mitchell, Wm J	S Front	16, 17	M F and T	1
W	657	McCandless, John	N Centre	pt V	M F and T	1
J	658	McKellar, Malcolm	S Centre	75	M F and F	1
	660	McIntosh, Wm	con 4	pt 22	M F and T	1
W	662	McIntyre, Patrick	N North	9	M F and O	1
J	671	McLaren, Andrew	N Front	W	M F and T	1
J	676	Macdonald, Wm M	E Maria	N pt 40	M F and T	1
J	677	McCallum, Andrew	S North	pt 11	M F and T	1
J	680	McKellar, John	S Front	pt U	M F and T	1
J	681	McKinnon, C B	S Front	pt Arcade	M F and T	1
J	686	McLarty, James	N Front	pt 5	M F and T	1
J	702	Noble, Joseph J	E Frank	9 of 24	M F and T	1
J	732	O'Keefe, Patrick	N Front	pt 2	M F and F	1
J	762	Parsons, Ed F	N Front	pt U	M F and T	1
J	683	Parker, Jas W	N Centre	S pt 40	M F and F	1

Jur.	Roll No.	NAME.	Concession or Street.	No of Lot or Part Lot.	Other Description.	P.O.	Jur.	Roll No.
	J 789	Rothwell, Thos W	Kittre'g sy of 22	20	M F and O.	1		234
W	J 817	Reynolds, E W	S Front	C pt S	M F and T.	1		235
	J 822	Reynolds, C P	S Front	pt T	M F and T.	1		
	J 827	Roach, B G	S Centre	77, 78	M F and F.	1		
	J 829	Rowland, Ed	S Front	C pt 22	M F and T.	1		273
W		Shepherd Mrs.	n Front	n.Y	"	1		271
	879	Salsbury, John	S Centre	pt 73	M F and F.	1		272
W	J 880	Still, Jasper	S Centre	71	M F and T.	1		
	J 882	Smith, Chas W	S Centre	73	M F and F.	1		304
W	J 903	Smith, Wm	S Front	E hf 15	M F and T.	1		274
	J 904	Shibley, Schuyler W	N North	12	M F and T.	1		657
	907	Scateherd, E W	E Victoria	21, 22, 56	M F and F.	1		
	J 919	Sewell, Chas S	N Front	6	M F and F.	1		
	J 920	Stevenson, Alex	N Front	W 1/2 6	M F and F.	1		330
	J 921	Smith, Walter M.	N Front	pt 5	M F and T.	1		344
W		Smith W. R.	"	pt X	"	1		353
	947	Tinkler, Wm	con 4	pt 22	M F and T.	1		
J	950	Todd, Wm E.	S Front	pt U	M F and F.	1		235
	958	Thompson, Dr A S	N Front	pt 2	M F and T.	1		609
	960	Thomas, W J	} S Front	pt 16	M F and T.	1		380
	960	Hockin, John			M F and T.	1		424
	J 970	Vary, D W	N Front	8	M F and F.	1		444
	1004	Walters, Renben	N Centre	46	M F and T.	1		
	1005	Wilson, Geo C	N Centre	W 3/4 41	M F and T.	1		465
	1012	Waite, David	} S North	12	M F and F.	1		
	1013	Waite, Stephen			M F and T.	1		482
J	1021	Wright, C C	N Front	E pt W	M F and T.	1		483
	1020	Wright, James	Kittredge av	23, 24, etc	M F and F.	1		488
	1024	Whitehead, Jas P	N Centre	pt 43	M F and T.	1		

PART II.—Persons entitled to Vote at Municipal Elections ONLY

27	Andrews, Rev A	N North	12	F	1	529
8	Ashwell, Geo	N Centre	pt 48, 59	F	1	529
20	Auld, Euphemia	N Front	pt 5	F	1	536
19	Bryans, Margaret	N Centre	pt 44, 43	F	1	100
28	Buck, William	S Centre	pt 70	F	14	173
	Bond, Isaac	N Centre	pt 47	F	16	343
479	Bogue, James	N Centre	S T	F	2	368
90	Bixel, Cyrus	N Front	rear T U V W	F	1	407
98	Berdan, John	} E Frank	8 of 51	F	1	394
100	Berdan, Theodore			T	1	601
103	Bell, Archibald	S Front	20	F	21	607
105	Bowley, James	N Front	pt 17	F	1	616
35	Bowley, Fred G.	S Front	pt 18	T	1	682
183	Brodericht, Werner	N North	pt 8	F	24	
170	Cameron, D M	} N Front	pt W	T	1	687
171	Clark, John R			T	1	694
178	Crealey, Truman	S Front	pt T	T	1	819
179	Cox, James	E Frank	12 of 24	F	1	22
188	Collins, Ellen	N Front	pt 7	F	1	
1053	Colter, Charles	S Centre	69	F	5	699
1058	Crispin, Thomas	S Front	pt 21, 22	F	23	700

POLLING SUB-DIVISION No. 3.

13

Other Description.	P.O.	Jur. Roll No.	NAME.	Concession or Street.	No. of Lot or Part Lot.	Other Description.	P.O.
M F and O.	1	234	Dyas, Wm J.	S Front	pt T.	T.	1
M F and T.	1	235	Dickenson, R	S Front	pt U	T.	1
M F and T.	1						
M F and F.	1						
M F and T.	1	273	Edwards, Richard	N Front	pt 3.	F.	18
"	"	271	English, John	S Front	Arcade	T.	1
M F and F.	1	272	Evans, John H.	S Front	pt 23	T.	1
M F and F.	1						
M F and T.	1	304	Folinsbee, John	N Front	pt 1, 2.	T.	1
M F and T.	1	274	Finch, Wm M	S Front	pt 23	T.	1
M F and T.	1	657	Fletcher, Clarine	N Centre	pt V	F.	1
M F and F.	1						
M F and F.	1	330	Grant, Thos	Reid sy, S R R	pt 10	F.	23
M F and T.	1	344	Geddes, Martha	N Centre	pt 42	F.	1
"	"	353	Geddes, Jas R	N Front	T U	T.	1
M F and T.	1						
M F and F.	1	235	Howard, George	S Front	pt U	F.	18
M F and T.	1	609	Hunter, Robert	N Front	E pt 5.	T.	1
M F and T.	1	380	Healey, James	S Centre	pt 74	F.	2
M F and T.	1	424	Hawley, Mary	S Centre	pt 70	T.	1
M F and T.	1	430	Heard, Charlotte	N North	pt 12	T.	1
M F and F.	1	444	Herbert, Bessie	S Front	pt V	T.	1
M F and T.	1						
M F and T.	1	465	Ivor, John	N Front	pt 1.	T.	1
M F and F.	1						
M F and T.	1	482	Johnston, Wm J	S Front	10 of 24	T.	1
M F and T.	1	483	James, John	W Frank	48, 49	T.	1
M F and F.	1	488	Johnston P H	N Front	pt 7	T.	1
M F and T.	1						
ons ONLY							
F.		903	Knaggs, James	S Front	E hf 15	F.	21
F.		529	Learoyd, A E	N Front	part V	T.	1
F.	1	529	Learoyd, John Rev	N Front	part V	F.	1
F.	1	536	Laird, W P	N Front	part 7	T.	1
F.	1	100	Loughhead, J S	E Frank	8 of 51	F.	16
F.	1						
F.	14	173	Moore, W C	N Front	pt X	F.	1
F.	16	343	Marshall, Thos	N Centre	46.	F.	18
F.	2	368	Moore, Thyrza	S Front	19	F.	15
F.	1	407	Manson, James	N Front	pt 1.	F.	1
T.	1	394	Maxwell, Mary A	S North	pts 3, 4	T.	1
T.	1	601	Meck, W H	N Front	pt X.	T.	1
F.	21	607	Mills, John	N Front	pt 4.	F.	1
F.	1	616	Manning, John	N Centre	V U	F.	1
T.	1	682	Macrault, J S	S Front	pt Arcade	T.	1
F.	24						
T.	1	687	McLarty, Mary	N Front	pt 5.	F.	1
T.	1	694	McKellar, John	E Frank	50, 51	F.	9
T.	1	819	McIntyre, Hugh	N Front	pt 3.	F.	10
F.	1	22	McCaulless, John	N Front	4	T.	1
F.	1						
F.	5	699	Nicholson, Henry	N Front	pt 7.	F.	1
F.	23	700	Noble, James	E Frank	9 of 24.	T.	1

Jur.	Roll No.	NAME.	Concession or Street.	No of Lot or Part Lot.	Other Description.	P.O.
	234	Orchard, Geo	S Front	pt T	F	1
	733	O'Dwyer, Patrick	N Centre	pt 48, 49	T	1
	756	Parker, Luey J	S Front	pt 14	F	1
	830	Parker, Harvey	N Front	pt 6	F	1
	57	Patterson, Samuel	S Front	15	F	2
	169	Pool, Irving	N Front	pt V	F	1
	352	Pearce, Jane	N Front	T U	F	1
	803	Rosser, Esther	N Centre	pt 44	T	1
	813	Rapley, Wm	N Front	1	T	1
	814	Drynan, Wm	N Front	1	T	1
	818	Richardson, George	N Front	pt 3	T	1
	820	Rosser, Jennie	S Front	pt S	T	1
	823	Robinson, Frank T	N Centre	48, 49	T	1
	824	Riseborough, W J	W Frank	48, 49	T	1
	324	Rose, Williamina	W Frank	48, 49	F	1
	826	Ray, Samuel, H	S Front	9 of 24	F	1
	850	Robertson, John	N Front	pt 6	T	1
	104	Seaton, John	E Frank	200, 202	F	1
	886	Sutherland, R	N Centre	48, 49	F	1
	909	Snell, W F	S Front	pt U	F	1
	910	Springer, Menno	S Front	Arcade	T	1
	912	Steinhoff, Sarah	E Frank	12 of 24	T	1
	1069	Scott, C G	S Front	pt V	F	1
	594	Woodbury, Edwin	S North	3, 4	F	15
	1023	Willis, Maggie	S Front	pt V	T	1
	1049	Zavitz, Thos	S Front	pt Arcade	T	1

PART III.—Persons entitled to Vote at Elections to the Legislative Assembly ONLY.

<i>W</i>	85	<i>Blue, Archibald</i>	<i>n. Centre</i>	<i>3, 4</i>	<i>M F</i>	1
<i>W</i>		<i>Currie, J. J.</i>	<i>W. Thomas</i>	<i>17, 18</i>	<i>"</i>	1
<i>W</i>	215	<i>Dunlop, James</i>	<i>Commercial</i>		<i>"</i>	1
<i>W</i>	237	<i>Douglas, Archie</i>	<i>Griffith's Hotel</i>		<i>M F</i>	1
			<i>S. Front</i>	<i>Queen's</i>	<i>M F</i>	1
	358	Graham, Robert	S Front	pt 21	M F	1
<i>W</i>	440	<i>Gurney, Frank</i>	<i>Queen's</i>		<i>"</i>	1
		Kaldane, Geo M	N Front	V	M F	1
<i>W</i>		<i>Richardson, John</i>	<i>Kilt av.</i>	<i>27, 28</i>	<i>"</i>	1
<i>W</i>	888	<i>Simpson, Edward</i>	<i>N Centre</i>	<i>48, 49</i>	<i>M F</i>	1
<i>W</i>	902	<i>Stitch, D W</i>	<i>S Front</i>		<i>M F</i>	1
<i>W</i>	905	<i>Small, Frank A</i>	<i>S Front</i>		<i>M F</i>	1
	911	Stepler, Wm H	S Front	Queen's	M F	1
	918	Sewell, Samuel	N Front	pt 6	M F	1
	1072	Sparling, J S	N Centre	pt 43	M F	1
	1019	Wallace, W K		Queen's	M F	1
	1022	Wright, A E		Kittredge av	M F	1
<i>W</i>		<i>Kyle, Robert</i>	<i>e. Thomas</i>	<i>74</i>	<i>"</i>	1
<i>W</i>		<i>McCabe, J R</i>	<i>Rouch's</i>		<i>"</i>	1
<i>W</i>		<i>McIntyre, John</i>	<i>n. North</i>	<i>9</i>	<i>"</i>	1

Compr
PA
Jur. Roll No.
J 4
J 16
J 51
J 52
J 53
J 54
J 55
J 67
J 69
J 75
J 104
W
1059
J 124
J 125
J 127
J 128
J 129
J 130
J 132
J 133
J 149
J 151
J 158
J 1054
W
J 201
J 202
J 210
J 211
J 222
J 224
J 239
J 244
J 250
J 251
J 279
J 280
J 281

Polling Sub-Division No. 4,

Comprising all that part of the Town lying West of Caradoc Street, South of Centre Street to Frank Street, thence south of James Street and East of Richmond and McKellar Streets.

Polling place at the High School.

PART 1.—Persons entitled to Vote at BOTH Municipal Elections and Elections to the Legislative Assembly.

Jun.	Roll No.	NAME.	Concession or Street.	No of Lot or Part Lot.	Other Description.	P.O.
J	4	Alison, P J	S & K sy	67, 68	M F and F	1
J	16	Anderson, W J	N Burns	107	M F and T	1
J	51	Barron, Edwin	Princess	S hf 8	M F and F	1
J	52	Brown, John	S & K sy	134, &c	M F and F	1
J	53	Brown, Josephus W	S & K sy	60	M F and F	1
J	54	Ballantyne, R A	S & K sy	17, 18	M F and F	1
J	55	Brady, Albert	S Metcalfe	E pt 3	M F and F	1
J	67	Banghart, Andrew	S Metcalfe	56	M F and T	1
J	69	Bradt, Sylvester	N Metcalfe	pt V	M F and T	1
J	75	Barclay, Wm F	S & K sy	133	M F and F	1
J	104	Brady, Bernard	S James	200, 202	M F and T	1
W		<i>Carnaghan A. S. & K.</i>		<i>122</i>		<i>1</i>
J	1059	Cameron, John	S Albert	37	M F and T	1
J	124	Cutler, Jacob	Reid sy, S R R	pt 6	M F and F	1
J	125	Charlton, Joseph	S & K sy	132	M F and T	1
J	127	Campbell, James	S & K sy	127, 128	M F and F	1
J	128	Campbell, Thomas	S & K sy	141	M F and F	1
J	129	Case, Eli	S & K sy	29	M F and T	1
J	130	Campbell, Jas M	S & K sy	36, 37	M F and F	1
J	132	Currie, Rev Peter	S & K sy	103	M F and F	1
J	133	Cawthrop, Thos	S Metcalfe	1	M F and F	1
J	149	Campbell, D D	S Metcalfe	pt 57	M F and T	1
J	151	Cummiford, M W	S & K sy	81, 82, 83	M F and T	1
J	158	Crone, Wm	S Albert	34, 35	M F and F	1
J	1054	Carruthers, A	S, Metcalfe	E pt 1	M F and T	1
W		<i>Credle Loftus S. & K.</i>		<i>71</i>		<i>1</i>
J	201	Dell, Benjamin F.	S & K sy	113 to 117	M F and F	1
J	202	Daniels, Wm	S & K sy	54, 55	M F and F	1
J	210	Donelly, Patrick	Beattie sy	23 to 27, etc.	M F and F	1
J	211	Donelly, James	Beattie sy	23 to 27, etc.	M F and F	1
J	222	Dewar, Neil	S & K sy	142	M F and T	1
J	224	Dudley, Geo	Reid's sy	W pt 6	M F and F	1
J	239	Diprose, Robert	S & K sy	150, 151, 152	M F and T	1
J	244	Dunsmore, Thomas	S & K sy	99	M F and T	1
J	250	Ellis, John	S & K sy	119	M F and F	1
J	251	Elliott, Jas B	S & K sy	69, 70	M F and F	1
J	279	Folks, Francis	Reid's sy, S R R	5	M F and F	1
J	280	Farrow, Robert	S & K sy	61	M F and F	1
J	281	Frazer, John	S & K sy	34	M F and T	1

Jur.	Roll No.	NAME.	Concession or Street.	No of Lot or Part Lot.	Other Description.	P.O.
	282	Ferris, W Y	S & K sy	6, 7	M F and T	1
	285	Fitzpatrick, Jas	J and W sy	W hf 15	M F and O	1
J	288	Fyfe, George	N Metcalfe	pt F	M F and T	1
J	289	Fyfe, John	N Metcalfe	E hf U	M F and T	1
J	293	Fitzpatrick, Peter C	S Albert	29	M F and T	1
J	331	Getty, Joseph	Kit sy of 11	73	M F and F	1
J	333	Golding, Harry	S & K sy	118	M F and T	1
J	334	Gordon, Thomas	S & K sy	63, 64	M F and F	1
J	361	Graham, Dugald	E Frank	79, 80	M F and F	1
J	363	Gillies, Dugald	N High, S & K sy	52	M F and T	1
J	387	Hill, Thos D	Reid sy, S R R	13, 14	M F and F	1
J	392	Humble, John	Reid sy	pt 10	M F and T	1
	394	Harnett, Wm	S & K sy	89	M F and F	1
J	395	Harris, James P	N Keefer	124, 125	M F and F	1
J	399	Healey, Wm A	S Campb'l	3, 4, 5	M F and T	1
W	421	Hopwood, Thos	S Centre	pt 74	M F and T	1
J	423	Humphries, S	S Albert	31	M F and F	1
J	456	Hambly, John jr	S & K sy	32, 33	M F and F	1
J	454	Hardy, David	E Frank	205, 206	M F and T	1
W	93	Hart, James	S James	109, 110	M F and T	1
W	470	<i>Johnston, H D</i>	<i>M & M, C</i>	<i>8, 9, 10</i>	<i>M F and F</i>	<i>1</i>
J	471	Jackson, Thomas	F Richmond	16	M F and T	1
J	484	Jeffery, David	S & K sy	47, 48, 49	M F and P	1
J	485	James, Ed J	E Frank	79, 80	M F and T	1
	499	Kinder, John H	M & M, B	9, 10	M F and T	1
J	504	Lethbridge, John	E Adelaide	68	M F and T	1
J	512	Lindsay, John	N Scott, S & K	84	M F and T	1
J	513	Large, Henry	S & K sy	38	M F and T	1
J	514	Large, Wm	M & M, D	3, 4, 8, 9, 10	M F and F	1
J	520	Lightheart, Lanson	S Centre	pt S	M F and T	1
J	535	Lenfestey, John jr	N James	S T	M F and F	1
J	551	Murray, John W	Kit sy of 12	39	M F and F	1
J	563	Murby, Wm	Reid sy, W Car	6	M F and T	1
J	564	Main, Henry	S & K sy	139, 140	M F and T	1
	565	Miller, Robt	N Campbell	30, 31	M F and F	1
J	567	Moore, George	N Scott	24	M F and O	1
J	576	Mitchell, John	S Centre	pt T	M F and F	1
J	577	Mitchell, Hugh	S Centre	81 V	M F and F	1
J	579	Moore, Wm H	N Centre	pt 44	M F and T	1
J	590	Morrison, Peter	S & K sy	153, 154	M F and F	1
J	632	McIntyre, John C	N Maitland Ter	3	M F and F	1
J	633	McGowan, R S	S & K sy	97, 98	M F and F	1
J	634	McGowan, Charles	S Scott	74	M F and T	1
J	636	McBeth, George	N High	62	M F and F	1
J	637	McPhail, D C	N Campbell	73	M F and F	1
J	638	McGowan, Wm	S Campbell	65, 66	M F and T	1
J	639	McNeice, Thomas	N Campbell	42	M F and F	1
J	642	McKeigan, Alex	S Beech	20	M F and F	1

Jur. Roll No.

J 655

W J 656

659

J 708

710

J 711

J 718

J 723

J 731

J 745

746

J 747

J 748

J 683

J 764

J 765

J 771

J 778

J 779

J 782

J 800

J 801

J 802

J 804

J 821

J 828

J1060

J1060

J1060

J 856

J 856

J 865

J 881

932

J 934

J 953

J 969

980

J 986

987

J 988

J1025

J1027

J1050

PART II.—Persons entitled to Vote at Municipal Elections ONLY

Jur.	Roll No.	NAME.	Concession or Street.	No of Lot or Part Lot.	Other Description.	P.O.
	10	Armstrong, Sarah	S James	pt U V	F	1
	23	Ash, Ephriam	E Frank	200, 202	F	9
	572	Adair, Benjamin	S and K sy	84	F	4
	102	Bradley, Mary	E Frank	pts 109, 110	T	1
	1059	Cuddy, Esther	S and K sy	2	T	1
	126	Campbell, Flora	S and K sy	120, 121	F	1
	158	Croic, Sarah L.	S and K sy	79	T	1
	184	Cornell, D B	} G T R	Elevator	} F	U S
	185	Mitchell, Wm J.				
	194	Cowan, Alice	S Centre	pt 80	F	1
	195	Cowan, Thomas	S Centre	pt 80	F	1
	281	Carson, Samuel W	S and K sy	34	F	10
	222	Carmichael, Adam	S and K sy	142	F	2
	217	Diggins, Margaret	S Metcalfe	57	T	1
	252	Ellis, Mary	E McKellar	6, 7	F	1
	311	Frank, Chas G	W Beattie	22 to 35	F	2
	366	Gott, William	S Front	pt 21	F	1
	821	Gooderham, Thos	E Beattie	73	F	15
	282	Hawley, Mary	S and K sy	6, 7	F	1
	288	Haldane, Robt	N Metcalfe	S pt T	F	1
	379	Howe, Kate	S Campbell	C 3, 4, 5	F	22
	419	Harrison, Mary A	N James	E hf V	F	1
	448	Hoskin, Fred T.	E Frank	109, 110	T	1
	449	Hoskin, Fred G	E Frank	109, 110	T	1
	450	Hoskin, G B	E Frank	109, 110	T	1
	471	Henry, Richard	E Richmond	16	F	11
	859	Harris, Mary	S and K sy	110, 111, 112	F	15
	503	Kittredge, A H.	eon 11	74 to 106, etc	F	1
	492	Knight, Nancy	S and K sy	77	F	1
	485	Lamon, George	E Frank	79, 80	F	U S
	504	Lethbridge, Elizabeth	E Adelaide	K sy, 68	F	1
	511	Lewis, Ann	Reid sy	S hf 7	F	1
	802	Lindsay, W B	S centre	pt S	F	1
	580	Moody, Elizabeth	S Albert	33	F	1
	627	McIntyre, Catharine	Kit. sy of 11	5, 6	O	1
	631	McTavish, Honora	Reid sy	N hf 8	F	1
	635	McNeice, Jane	W Adelaide	E hf 7	F	1
	640	McDougall, Noney	S High	102	F	1
	654	McTaggart, Jane	S Metcalfe	57	F	1
	685	McGibbon, Finlay	S Albert	33, 39	F	16

WV

W

Koss Francis

95

Jur. Roll No.

634 N
711 N
722 N

16 Or
293 Og
724 Og

744 Pe
772 Pi

239 Ro
244 Ro
499 Ro
780 Ro
783 Ra
782 Ro
819 Ri

745 Sel
849 Ste
859 Ste
1071 Sea
913 Ste

454 Th
930 Th
931 Tri

968 Va
968 Ri

638 W
1031 W
1059 W
102 W

783 Zav

PART

11 Ar

68 Bic
77 Bla
79 Bro
80 Bur

223 Die

260

POLLING SUB-DIVISION No. 4.

Jur. No.	Roll No.	NAME.	Concession or Street.	No of Lot or Part Lot.	Other Description.	P.O.
	286	Foster, George	R R Station		M F	1
	290	Fife, Albert	N Metcalfe	U	M F	1
W		Ferris W. Jr	W. Metcalfe	6, 7	"	1
	365	Graham, Robert	E Frank		M F	1
	404	Hills, James	N Metcalfe	22	M F	1
	455	Hare, Andrew	S and K sy	93	M F	1
W		Miller Dan	"	30, 31	"	1
W	566	Miller, Wm S	N Campbell	30, 31	M F	1
	591	Morrison, Wm J	S and K sy	153, 154	M F	1
W		Mitchell Philip	S Centre	27	"	1
W	643	McKeigan, Colin	S Beech	20	M F	1
	650	McFie, Angus	J & W sy	23, 25	M F	1
	684	McDonald, Alex	E Frank	Prangley's	M F	1
W		McLean Dan	"	"	"	1
	709	Northcott, Chas E	W Caradoc	15	M F	1
W		Nicholls Edward	N James	V	"	1
	781	Regan, Michael	N Campbell	39	M F	1
	785	Rogers, William	S Maitland Te.	92	M F	1
	791	Robertshaw, Thos	J and W sy	16	M F	1
	847	Simpson, Francis	Reid sy	S hf 14	M F	1
	857	Stevens, Samrel J	E McKellar	10	M F	1
W	916	Scott, Hector	E Frank	200, 202	M F	1
W		Smith Frank	N James	"	"	1
	933	Topp, Frederick	N Scott	26, 27, 28	M F	1
	943	Thody, Elijah	S Maitland	24	M F	1
	959	Taylor, Wm	E Frank	200, 202	M F	1
	1028	Wilson, Thos	E Frank	200, 202	M F	1
W		Whitlock Chas.	Prangley's	"	"	1
	1047	Zavitz, William	S and K sy	94	M F	1

Com
PAR
Jur. Roll No.
J 979
J 50
J 78
J 88
J 90
J 100
J 36
120
121
122
123
142
150
165
J 166
J 167
J 189
W
J 200
J 216
J 218
226
J 231
249
269
J 271
J 291
J 99
J 301
J 302
J 303
J 342
J 337
J 342
347
J 357



POLLING SUB-DIVISION No. 5.

Jur.	Roll No.	NAME.	Concession or Street.	No of Lot or Part Lot.	Other Description.	P.O.	
	391	Hamlyn, Henry	A & K sy, S Front.	71	M F and T	1	
J	405	Herdman, Samuel	con 4	pt 22	M F and F	1	
J	409	Hodgkinson, Wm	E Colborne	9	M F and T	1	
	410	Hill, Robert S	W Colborne	3	M F and T	1	
J	411	Hill, George S	W Colborne	3	M F and T	1	
J	416	Heard, John	E Caradoc	pt 7	M F and F	1	
J	456	Hull, Wash W	con 4	pt 22	M F and F	1	
	457	Hoare, W W	E Caradoc	6 and pt 7	M F and F	1	
W		<i>Kardy Mrs. Ch. n. Gumbo Mt R</i>					
J	464	Irvine, Thomas	N Front	pt 8	M F and T	1	
J	471	James, Thomas	con 4	pt 22	M F and F	1	
	478	James, Jos F	E Caradoc	10, 11	M F and O	1	
J	487	Johnson, Philip H	W Colborne	2	M F and F	1	
W	491	Kunze, Robert	A & K sy, S Cen.	44	M F and T	1	
W	J	522	Lewis, David D	E Caradoc	3	M F and F	1
W	J	531	Lane, Robert	W Head	4	M F and T	1
W	J	541	Lawson, Fred T	con 4	pt 22	M F and F	1
J	556	Moore, Wm J	E Head	9	M F and F	1	
J	557	Mallon, Thos C	E Head	11	M F and O	1	
J	558	Murdock, Geo	W Arthur	5, 6	M F and T	1	
J	559	Murdock, John	E Head	pt 2 and 3	M F and F	1	
J	560	Morrow, Frank	E Arthur	47, 48, 49	M F and T	1	
J	561	Merrill, Thos	A & K sy, S Front.	69	M F and F	1	
J	570	Munro, D W	con 4	pt 22	M F and F	1	
J	575	Mann, Wm	E Caradoc	pt 10	M F and T	1	
	585	Mitchell, Geo	S Front	pt L	M F and T	1	
J	588	Morre, James E	N Front	pt K	M F and T	1	
J	592	Manigault, W M	E Head	pts 4, 5	M F and F	1	
J	595	Murdock, Wm S	E Head	1 and 2	M F and F	1	
	593	Murdock, Wm	N Front	pt R S rear	M F and F	1	
J	653	McKellar, Duncan	E Colborne	pt 1	M F and T	1	
J	663	McCallum, Daniel	S Front	pt K	M F and F	1	
	665	McKeon, Rev A	S Front	DE F	M F and O	1	
J	667	McNeil, John	N Front	pt L	M F and F	1	
J	669	McCandless, Sam	S Front	pt P	M F and T	1	
J	697	McGarvey, John	N Front	N O	M F and O	1	
W	J	715	<i>McGarvey Mrs. J. Mt.</i>				
J	715	Newton, John A	E Caradoc	2	M F and T	1	
J	754	Payne, Jas T	E Head	S hf 6	M F and T	1	
J	755	Plaxton, Albert	E Caradoc	pt 1	M F and T	1	
J	757	Pike, Charles	N Front	pt P Q	M F and F	1	
J	760	Pike, Wm H	S Front	pt R	M F and T	1	
J	770	Pool, Irving	E Colborne	23 and pt 1	M F and F	1	
	770	Pool, John	N Front	pt V	M F and F	1	
	772	Pinecombe, Rich	4	pt 23, 24	M F and O	1	
	776	Ross, Wm	N Metcalfe	pt 10	M F and T	1	
	777	Richardson, Wm	S Front	A B	M F and F	1	

Jur.	Roll No.
	796
	799
J	842
	1071
J	843
J	845
J	870
J	875
	894
	897
J	899
J	900
J	938
J	940
J	941
J	942
J	944
	952
J	979
J	984
J	985
	100
J	1002
J	1011
J	1016
J	1017
	1036
J	1049
J	1051
	167
	33
	164
	414
	898
	1054
	584
	202
	347
	200
	50
	264
	265
	267
	268

Jun.	Roll No.	NAME.	Concession or Street.	No. of Lot or Part Lot.	Other Description.	P.O.
	796	Richardson, H	4	pt 23	M F and F	1
	799	Rundle, Wm	E Colborne	7	M F and F	1
J	842	Sickles, Edward	N Centre, A & K	50	M F and T	1
	1071	Seaton, John	S Front	pt R	M F and F	1
J	843	Snider, Andrew	W Arthur	3, 4, 5	M F and T	1
W	845	Smith, Joseph	S Front	66, 67	M F and T	1
J	870	Shotwell, John B.	con 4	pt 22	M F and F	1
J	875	Scott, Jacob	E Colborne	S hf 4	M F and F	1
	894	Square, Thomas	N Front	pt K	M F and T	1
	897	Spurr, Luke V	N Front	pt P	M F and T	1
J	899	Statham, Titus J	A & K sy	62	M F and F	1
J	900	Statham, Silas F	con 4	pt 22	M F and F	1
J	938	Thompson, John R	con 4	pt 22	M F and F	1
J	940	Thompson, Andrew	con 4	pt 23	M F and F	1
J	941	Thompson, John	E Head	4, pt 23	M F and T	1
J	942	Tanton, Edwin	W Arthur	3	M F and T	1
J	944	Thompson, Wm	E Caradoc	pt 10	M F and F	1
	952	Tanton, John F	N Centre	55, 56	M F and F	1
J	979	Watkinson, W J	E Arthur	38, 39	M F and T	1
J	984	Wilkinson, Isaac	W Arthur	7, 8	M F and F	1
J	985	Williams, Roger	S Front	pt 65, 66	M F and F	1
	100	Walsh, Patrick	E Head	pts 3, 4	M F and F	1
J1002		Wilton, John	E Colborne	pt 5	M F and F	1
J1011		Wright, Walter	S Front, A & K	70	M F and T	1
J1016		Wilton, Isaac E	E Colborne	N hf 5	M F and T	1
J1017		Woodward, Frank	E Colborne	6	M F and O	1
	1036	Winlow, J B.	W Colborne	4	M F and F	1
J1049		Zavitz, Thomas	con 4	pt 22	M F and F	1
J1051		Zavitz, Edward	A & K, N Met	21, 22	M F and F	1

PART II.—Persons entitled to Vote at Municipal Elections ONLY

167	Bishop, William	W Colborne	3	F	1
33	Bolton, Wm	con 4	pt 22	F	2
164	Campbell, Mary	S Front	M	F	1
414	Cowan, Wm	N Metcalfe	10, 11	F	1
898	Cox, James	S Front	pt P	F	1
1054	Carruthers, A	N Front	rear G H J	F	1
584	Crosby, Elizabeth	S Front	pt L	F	1
202	Daniells, Wm	E Head	N hf 6	F	1
347	Durand, James	S Front	pt N	F	4
200	Davidson, Mary	N Met, A & K	33, 34	F	1
50	Emmens, Robert	A & K	45, 46	F	16
264	Evely, Sarah	N Front	pt K	F	1
265	Escott, T B	N Front	pt S	F	1
267	Evans, David	S Front	pt Q	T	1
268	Evans, Frank F				

Jur. Roll No.	NAME.	Concession or Street.	No of Lot or Part Lot.	Other Description.	P.O.
37	Black, A N C	Kittredge av	29 to 32	F	Dutton
218	Brown, John	E Caradoc	pt 1	F	1
123	Bailey, Hugh	A & K	68	F	16
1016	Crane, Sarah E	E Colborne	5	F	1
118	Fortner, Geo A	Blk sy	9, 10	F	2
292	Fitzpatrick, Thos	N Front	E hf R	T	1
300	Frank, Ella	N Front	E hf L	F	1
942	Fitzpatrick, James	W Arthur	pt 3	F	1
379	Hull, Wesley	con 4	pt 22	F	1
414	Hart, Catharine	N Metcalfe	10, 11	T	1
1046	Haight, Samuel	S Front	63	F	Sparta
843	Humphries, Sam	W Arthur	3, 4, 5	F	1
502	Keefer, Frank H	E Caradoc	pt 8, &c	F	1
503	Kittredge, A H	22 and 23	33 to 41	F	1
527	Lamotte, George	S Front	pt R	T	1
590	Morrison, Peter	N Front	pt S	T	1
557	Mallon, John	E Head	11	F	St Thomas
572	Messias, Elizabeth	E Colborne	pt 8	T	1
545	Moore, Ephraim	A & K sy	22, 23	F	U S
622	Martin, Joanna	N Front, A & K	1, 2	F	1
651	McGugan, Ann	Kittredge sy of 22	4, 5	F	1
668	McColl, Hugh	S Front	pt O	F	1
670	McBeth, Jane	N Front	rear of S	T	1
527	O Callaghan, John	S Front	pt R	F	8
715	O'Keefe, Patrick	E Caradoc	2	F	1
90	O'Dwyer, Patrick	Kittredge av	pt 12	F	1
797	Richardson, L R	con 4	pt 23	F	U S
670	Smith, Emily	N Front	rear of S	F	1
842	Saxton, John	N Cen, A & K	50	F	1
840	Statia, W E	N English	pt 8	F	5
861	Sifton, Jemima	con 4	pt 22	F	1
1067	Sickles, John	E Arthur	72	F	16
1018	Smith, R P	S Front	cen pt P	F	1
966	Urquhart, Catherine	S Front	H	T	1
1009	Worsfold, Annie	S Front	pt L	F	1
1011	Wright, James	N Front	H J	F	1
1037	Whyte, Edward	S Front	pt O	F	1
1046	Zavitz, Mary	S Front, A & K	63	T	1

Jur. R. N.

71

80

W

229

316

W

329

349

W

415

W

562

586

W

587

588

W

811

W

963

982

983

1600

PART III.—Persons entitled to Vote at Elections to the Legislative Assembly ONLY.

Jur.	Roll No.	NAME.	Concession or Street.	No. of Lot or Part Lot.	Other Description.	P.O.
	9	Almas, Wm	S Front	R	M F	1
	71	Burkholder, Ben	E Caradoc	4	M F	1
	86	Baird, Philip	S Front	G	M F	1
W		<i>Crotty, Jas</i>	<i>e. Caradoc</i>	<i>2</i>		<i>1</i>
	229	Donaldson, S S	S Front	M	M F	1
	316	Frank, John	S Front	L	M F	1
	329	Griffeths, James	E Head	5	M F	1
W	349	Geary, Philip	N Front	M	M F	1
W		<i>Quinn W. J.</i>	<i>Knitt Fac</i>			<i>1</i>
	415	Hart, John	N Metcalfe	pt 10, 11	M F	1
W		<i>Hart, Jos.</i>	"	"		<i>1</i>
	562	Merrill, Chas.	A & K sy	69	M F	1
	586	Mellerish, Wm	E Head	8, 9, 10	M F	1
W	587	Mason, G H F	E Head	8, 9, 10	M F	1
	588	Mitchell, Angus	N Front	L	M F	1
W	811	Ritchie, Hugh	N Front	pt L	M F	1
W		<i>Southern Alf. n. Mt.</i>				<i>1</i>
W	963	Urquhart, Wm	N Metcalfe	10	M F	1
	982	Whalls, Thos	A & K sy	45, 46	M F	1
	983	Watkinson, John	E Arthur	38, 39	M F	1
	1600	Webb, Jas H	E Head	4	M F	1



Polling Sub-Division No. 6,

Comprising all that part of the Town lying East of Caradoc Street and South of Metcalfe Street.

Polling place at the Caradoc Street School House.

PART 1.—Persons entitled to Vote at BOTH Municipal Elections and Elections to the Legislative Assembly.

Jur. No.	Roll No.	NAME.	Concession or Street.	No of Lot or Part Lot.	Other Description.	P.O.
	1	Asher, James	Laird's sy	B A	M F and F..	1
	2	Almes, Adam	Laird's sy	E hf 8	M F and F..	1
	3	Anderson, James	E Caradoc	3, 4	M F and F..	1
	J 5	Autterson, James	E Ellor	pt 3	M F and F..	1
	473	Arscott, George	N Henry	6	M F and F..	1
J	46	Black, A J L	E Ellor	6	M F and F..	1
J	45	Baker, Chas S	con 10	pt 13	M F and T..	1
	48	Baker, Andrew	S English	4	M F and F..	1
	49	Bravener, Geo	Blackburn sy	24	M F and F..	1
J	66	Burkholder, H M	S Concord	13	M F and F..	1
J	70	Barnes, John	Kit sy, S Met	2	M F and F..	1
J	73	Bond, John	B sy, S Metcalfe	5	M F and F..	1
J	98	Berdan, John	B sy, S Metcalfe	6	M F and F..	1
J	107	Campbell, W J	E Ellor	pt 9	M F and T..	1
	109	Calcut, Joseph A	W Ellor	pt 5	M F and T..	1
	110	Calkins, John	N English	14	M F and T..	1
W	J 111	Campbell, Charles	E Caradoc	38	M F and F..	1
J	112	Cummings, Wm	N Bella	27, 28, 29	M F and T..	1
	113	Covey, Charles	N Henry	19, 20, 21, 22	M F and O..	1
J	115	Cooper, Wm	E Elm	26	M F and F..	1
	117	Campbell, Robt J	Blackburn sy	11	M F and T..	1
J	118	Carr, Thos E	Blackburn sy	N hf 9, 10	M F and T..	1
	119	Collins, James E	Richardson's plot	N pt	M F and T..	1
	143	Cumner, Wm C	Blackburn sy	S Metcalfe	M F and F..	1
J	144	Calcut, Chester	N Concord	8, etc	M F and T..	1
J	147	Clarke, John	S Concord	10	M F and T..	1
J	152	Cruikshanks, Jas	S English	13 to 16, etc	M F and F..	1
J	153	Condon, Thos	W Ellor	11, 12	M F and F..	1
J	168	Clarke, Wm G	B sy, S Metcalfe	1	M F and F..	1
	179	Cox, James	S Metcalfe	3, &c	M F and F..	1
J	197	Deo, Daniel	W Ellor	pt 20	M F and F..	1
	221	Drew, James	S English	W hf 8	M F and T..	1
	234	Dyas, Wm J	E Caradoc	12	M F and F..	1
	246	Emmons, John	Munn's sy	25	M F and F..	1
	247	Emmons, Henry	Munn's sy	17	M F and F..	1
	248	Elwick, George	Munn's sy	15	M F and F..	1
J	262	English, J H	con 10	pt 12	M F and O..	1

Jur. No.
 W 277
 278
 J 306
 J 115
 318
 J 319
 J 320
 321
 J 322
 J 327
 328
 J 339
 J 374
 J 381
 384
 385
 386
 J 389
 J 406
 412
 J 413
 J 431
 W 449
 471
 473
 J 482
 489
 J 497
 J 498
 510
 W 1049
 543
 J 546
 J 547
 547
 J 549
 W 552
 J 553
 J 574
 J 673
 624
 J 625
 J 626
 J 629
 J 630

POLLING SUB-DIVISION No. 6.

Roll No.	NAME	Concession or Street.	No of Lot or Part Lot.	Other Description.	P.O.
W 275	Frank, Lucien	R & G, B	lot 5, etc	M F and F..	1
278	Ferguson, James	N Henry	14	M F and F..	1
J 306	Fortner, Lewis	E Head	S hf 9, 10	M F and F..	1
J 115	Fawcett, C B	E Elm	26	M F and F..	1
318	Gill, Moses	Richardson plot	lot 1	M F and F..	1
J 319	Gooderham, E	Laird sy	H	M F and T..	1
J 320	Gill, Albert E	E Ellor	1, 2	M F and F..	1
321	Gooderham, Jas	S English	5	M F and T..	1
J 322	Gibson, John W	B sy	36, 37, 38	M F and F..	1
J 327	Grant, Jas D	N Scott	27	M F and T..	1
328	Gill, Aaron	N Canaan	plot	M F and T..	1
J 339	Gerrie, Robert	B sy, S Met	2	M F and T..	1
J 374	Gibson, E A M	10	pt 13	M F and T..	1
J 381	Harnett, Isaac	Munn's sy	9, 10	M F and T..	1
384	Harris, Adam jr	E Ellor	7	M F and F..	1
385	Hambly, John	ccn 10	pt 13	M F and F..	1
386	Harris, Adam	W Ellor	pt 20	M F and F..	1
J 389	Hamilton, John	W Head	39, 40	M F and F..	1
J 406	Harrison, Edwin	S Metcalfe	B sy, 20	M F and T..	1
412	Hunter, Robert	S Concord	11	M F and O..	1
J 413	Hill, Wm F	N Concord	pts 5, 6	M F and F..	1
W 431	Howdy, Thos A	N Front	pt R	M F and F..	1
J 449	Hoskin, Fred G	S Henry	4, 5	M F and F..	1
J 463	Irvine, Samuel	S Metcalfe	W B sy	M F and T..	1
471	Jackson, Thos	S English	11	M F and F..	1
473	Jervis, Edward	N Henry	6	M F and T..	1
J 482	Johnston, Wm J	E Caradoc	14, 15	M F and T..	1
489	Kellestine, M	W Ellor	15	M F and T..	1
J 497	Kinder, A E	E Caradoc	6	M F and F..	1
J 498	Kinder, Fred H	E Caradoc	6	M F and F..	1
510	Lynn, John	N English	10	M F and T..	1
W 1049	Loynes, John J	N English	1	M F and F..	1
543	Moore, James	Munn's sy	7	M F and F..	1
J 546	Moore, Archibald	10	pt 13	M F and F..	1
J 547	Milliken, John	W Ellor	14	M F and T..	1
547	Murray, Robert	English sy	W Ellor 4	M F and F..	1
J 549	Mihell, Jas H	Kit sy of 12	39	M F and F..	1
W 552	Morrow, Wm	N English	9	M F and T..	1
J 553	Morrow, James	N English	E pt 11	M F and F..	1
J 574	Milner, Edward	N Concord	5, 6	M F and F..	1
J 673	Moore, Wm C	S Metcalfe	4, 3	M F and F..	1
624	McQuade, Henry	S Henry	11	M F and F..	1
J 625	McWhinney, James	N Henry	12, 13	M F and F..	1
J 626	McWhinney, Samuel	S Henry	9, 10	M F and F..	1
J 629	McDonald, Robt	N English	2	M F and F..	1
J 630	McLellan, A Y	S English	9, 10	M F and F..	1

Jur.	Roll No.	NAME.	Concession or Street.	No of Lot or Part Lot.	Other Description.	P.O.
J	674	McWhinney, John	R and G, B	1, 2, 3, 4	M F and F.	1
J	675	McCormick, John	S Concord	9	M F and T.	1
J	704	Newton, Wm H.	E Ellor	10	M F and F.	1
J	705	Newton, John	English sy	14	M F and F.	1
J	707	Norris, George	N Henry	1, 2, 3.	M F and F.	1
J	736	Plaxton, Wm	Munn's sy	19, 20, 27, 28	M F and T.	1
J	740	Plank, Sylvester	con 10.	pt 13	M F and F.	1
J	741	Plank, Francis	Richardson blk	3, 4	M F and T.	1
J	742	Plank, Levi	con 10	pt 13	M F and F.	1
J	743	Plank, Samuel	B sy	N Scott 26	M F and F.	1
J	773	Root, Daniel	E Ellor	pt 3.	M F and O.	1
J	774	Robinson, John A.	S Scott.	31, 32.	M F and F.	1
J	775	Richardson, R	Richardson block		M F and F.	1
J	823	Robinson, Frank T	B sy	pts 43, 44	M F and F.	1
J	1065	Sellers, William	10	pt 13	M F and F.	1
J	833	Scott, Geo	Munn's sy	12, 14.	M F and T.	1
J	837	Sinclair, D B.	con 10	pt 13	M F and F.	1
J	839	Seymour, Geo	N English.	pts 7 and 6	M F and T.	1
J	841	Stonehouse, John	E Head.	33.	M F and T.	1
J	915	Seymour, Henry	N English	3	M F and F.	1
J	928	Thomson, Arch	W Ellor	16, 17.	M F and F.	1
J	951	Tanner, Charles	10	pt N W ¼ 13	M F and T.	1
J	973	Wallace, Wm	10.	pt 14.	M F and O.	1
J	974	Winters, John	con 10.	pt S E pt 14.	M F and O.	1
J	976	Wilkinson, Reuben	Munn's sy	1, 2, 3, 5, 6	M F and F.	1
J	977	Winterton, Jas.	con 10.	pt 13	M F and F.	1
J	978	Watson, Wm G	E Ellor	5	M F and F.	1
J	996	Walton, Geo.	S Metcalfe	W, B sy	M F and F.	1
J	1003	Weleh, Wm	Head of Concord		M F and F.	1
J	1042	Yeager, Henry	W Ellor	pt 19	M F and F.	1

W
W

PART II.—Persons entitled to Vote at Municipal Elections ONLY.

91	Barry, John	con 10.	pt 15	F.	1
112	Campbell, Malcolm	N Bella	27 to 29	F.	1
107	Collins, Rev T	E Ellor	pt 9	F.	1
144	Corkindale, L	N Concord	8	F.	15
114	Clemenegg, Mary	N Canaan.	15, 17, 18	F.	1
996	Corkindale, Janet	Blk W	Blk sy	F.	1
221	Drew, Abraham	S English	W hf 8.	F.	4
242	Degraw, Elizabeth	S Canaan	E, M sy	F.	1
199	Davidson, Ann	Blaekburn sy	13, 14	F.	1
957	Duncan, James	con 10	pt 13	F.	16

Woodward Alb R. & G., B 1, 2, 3, 4

Jur. Roll No.
263
463
742

325

45
381
390

459
181

566
507
508
117

514
147

144

110

510
739

736
876
927
846
841

111

106

PAF
6
72
74
94
99
116
148

W
W

POLLING SUB-DIVISION No. 6.

Jur.	Roll No.	NAME.	Concession or Street.	No. of Lot or Part Lot.	Other Description.	P.O.
	263	English, Elizabeth	E Caradoc	12, pt 10	F	1
	463	Ellis, John W	S Metcalfe	W, B sy	F	1
	742	Fraser, Catherine	con 10	pt 13	F	Sheddon
	325	Gowrie, Ellen	B sy	34, 35	F	1
	45	Haldane, Robert	10	pt 13	F	2
	381	Harnett, Wm	Munn's sy	9, 10	F	1
	390	Harrison, Sarah	B sy	S Metcalfe, 7	F	1
	459	Jennings, J P	W Ellor	15	F	16
	481	Johnston, Alex	S Canaan	19 to 22	F	1
		Laird, W P	Laird sy	B and A	F	1
	566	Loynes, Jas S	S English	7	F	US
	507	Lepage, Melvina	E Ellor	9	F	1
	508	Lamont, Janet	E Ellor	N W pt 10	F	1
	117	Lewis, John	Blackburn sy	11	F	2
	544	Moore, George	Munn's sy	14	F	8
	147	McNeil, John	S Concord	10	F	2
	144	Nell, Thos	W Ellor	18	F	1
	110	Orchard, George	N English	14	F	1
	510	Putnam, Lister H	N English	10	F	21
	739	Patterson, Mary	Richardson plot	7	F	1
	736	Seed, Hugh	Munn's sy	19, 20, 27, 28	F	1
	876	Salsbury, Harriet	S Concord	12	T	1
	927	Shepherd, Simpson	10	pt 13	F	16
	846	Smith, Jane	B sy	pts 43, 44, &c	F	5
	841	Stonehouse, Mary	Blackburn sy	33	F	1
	111	Vennor, Eliza	E Caradoc	38	F	US
	106	Wray, Wm	Kit sy of 14	11, 12, 13	F	14

PART III.—Persons entitled to Vote at Elections to the Legislative Assembly ONLY.

6	Autterson, Alex	E Ellor	6	M F	1
72	Brush, Sam	Blk sy	16	M F	1
74	Bond, R W	S Metcalfe	5	M F	1
94	Buckle, Wm	Richmond plot	3, 4	M F	1
99	Berdan, O L	B sy	6	M F	1
	<i>Brown Isaac</i>	<i>E Ellor</i>	<i>7</i>		<i>1</i>
116	Cooper, Chas	E Elm	26	M F	1
148	Clark, Wm L	S Concord	10	M F	1
	<i>W Cooper Wm</i>	<i>Kit sy on 14</i>			<i>1</i>
	<i>W Cooper Wm jr</i>	<i>E Elm</i>			<i>1</i>

Jur.	Roll No.	NAME.	Concession or Street.	No of Lot or Part Lot.	Other Description.	P.O.
	198	Degraw, Joshua	N English	6, 7	M F	1
W	981	Donelly, Patrick	N English	5	M F	1
W	322	Cooderham, Geo <i>Drew Arthur</i>	S English <i>N English</i>	5	M F	1
	323	Gear, George	Blk sy	45	M F	1
	326	Grills, James	N Scott	28	M F	1
	317	Green, Joseph	R & G sy	A 1	M F	1
	348	Geary, Wm jr	10	pt 13	M F	1
W	382	Harris, Wm <i>Harris Wm</i>	W Ellor <i>W Ellor</i>	20	"	1
	382	Heron, Christopher	Richmond plot	8	M F	1
W	388	Harrison, Thos S.	N English	7	M F	1
W	489	Harrison, Wm <i>Harrison Wm</i>	W Ellor <i>W Ellor</i>	39	M F	1
	489	Kellestine, Nelson	W Ellor	15	M F	1
	509	Leitch, Frank	N Henry	19, 20	M F	1
	550	Mihill, Wm H	E Caradoc	39	M F	1
	628	McNeil, Duncan	N Bella	27, 28	M F	1
W	737	Phanton, F F <i>Mihill Wm</i>	Munn's sy <i>E Caradoc</i>	19	M F	1
W	738	Parker, Henry	R & G sy, A	5	M F	1
	834	Seott, Wm	Munn's sy	12, 16	M F	1
	835	Seott, James	Munn's sy	13	M F	1
	964	Upton, Frank	10	pt 13	M F	1
	975	Wilner, Edward	Munn's sy	11	M F	1
	981	Wiles, Thomas	N English	5	M F	1
	1026	Wray, Wm	R & G sy, B	7, 8	M F	1

481 of the within named voters are qualified to serve on Juries.

I, J. B. WINLOW, Clerk of the Municipality of the Town of Strathroy, in the County of Middlesex, do hereby certify that parts one and three of the within list constitute a correct list for the year 1889, of all persons appearing by the last revised assessment roll of the said Municipality to be entitled to vote at elections for members of the Legislative Assembly; and that parts one and two constitute a correct list for said year of all persons appearing by the said roll to be entitled to vote at Municipal Elections in said Municipality, and I hereby call upon all electors to examine the said list, and if any omissions or other errors are perceived therein, to take immediate proceedings to have the said errors corrected according to law.

Dated this 19th day of August, 1889.

J. B. WINLOW,
Clerk of the Town of Strathroy,
Strathroy P.O.

1110101501207154
OE

The Sheriff shall immediately, upon the receipt of his copies, cause one of them to be posted up in a conspicuous place in the Court House ; the Clerk of the Peace, upon the receipt of his copies, shall cause one of them to be posted in a conspicuous place in his office ; every Public or Separate School Head Master or Mistress shall in like manner post up one of his of her copies on the door of the School House and every Postmaster shall post up one of his copies in his Post Office.—SECTION 8.

