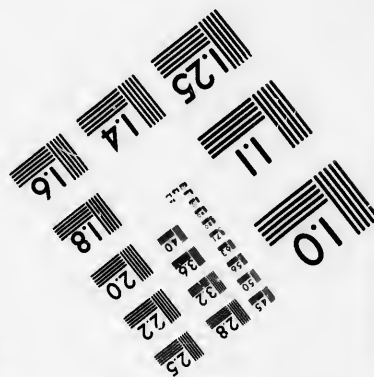
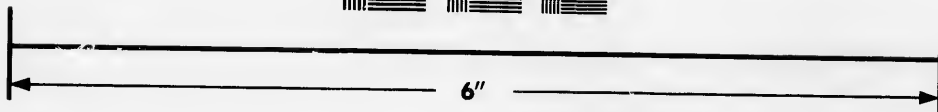
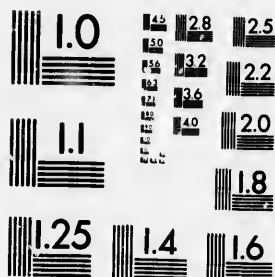


**IMAGE EVALUATION
TEST TARGET (MT-3)**



**Photographic
Sciences
Corporation**

23 WEST MAIN STREET
WEBSTER, N.Y. 14580
(716) 872-4503

**CIHM/ICMH
Microfiche
Series.**

**CIHM/ICMH
Collection de
microfiches.**



Canadian Institute for Historical Microreproductions / Institut canadien de microreproductions historiques

© 1986

Technical and Bibliographic Notes/Notes techniques et bibliographiques

The Institute has attempted to obtain the best original copy available for filming. Features of this copy which may be bibliographically unique, which may alter any of the images in the reproduction, or which may significantly change the usual method of filming, are checked below.

L'Institut a microfilmé le meilleur exemplaire qu'il lui a été possible de se procurer. Les détails de cet exemplaire qui sont peut-être uniques du point de vue bibliographique, qui peuvent modifier une image reproduite, ou qui peuvent exiger une modification dans la méthode normale de filmage sont indiqués ci-dessous.

- | | |
|--|--|
| <input type="checkbox"/> Coloured covers/
Couverture de couleur | <input type="checkbox"/> Coloured pages/
Pages de couleur |
| <input type="checkbox"/> Covers damaged/
Couverture endommagée | <input checked="" type="checkbox"/> Pages damaged/
Pages endommagées |
| <input type="checkbox"/> Covers restored and/or laminated/
Couverture restaurée et/ou pelliculée | <input type="checkbox"/> Pages restored and/or laminated/
Pages restaurées et/ou pelliculées |
| <input type="checkbox"/> Cover title missing/
Le titre de couverture manque | <input checked="" type="checkbox"/> Pages discoloured, stained or foxed/
Pages décolorées, tachetées ou piquées |
| <input type="checkbox"/> Coloured maps/
Cartes géographiques en couleur | <input type="checkbox"/> Pages detached/
Pages détachées |
| <input type="checkbox"/> Coloured ink (i.e. other than blue or black)/
Encre de couleur (i.e. autre que bleue ou noire) | <input checked="" type="checkbox"/> Showthrough/
Transparence |
| <input type="checkbox"/> Coloured plates and/or illustrations/
Planches et/ou illustrations en couleur | <input type="checkbox"/> Quality of print varies/
Qualité inégale de l'impression |
| <input type="checkbox"/> Bound with other material/
Relié avec d'autres documents | <input type="checkbox"/> Includes supplementary material/
Comprend du matériel supplémentaire |
| <input type="checkbox"/> Tight binding may cause shadows or distortion
along interior margin/
La reliure serrée peut causer de l'ombre ou de la
distorsion le long de la marge intérieure | <input type="checkbox"/> Only edition available/
Seule édition disponible |
| <input type="checkbox"/> Blank leaves added during restoration may
appear within the text. Whenever possible, these
have been omitted from filming/
Il se peut que certaines pages blanches ajoutées
lors d'une restauration apparaissent dans le texte,
mais, lorsque cela était possible, ces pages n'ont
pas été filmées. | <input type="checkbox"/> Pages wholly or partially obscured by errata
slips, tissues, etc., have been refilmed to
ensure the best possible image/
Les pages totalement ou partiellement
obscurcies par un feuillet d'errata, une pelure,
etc., ont été filmées à nouveau de façon à
obtenir la meilleure image possible. |
| <input checked="" type="checkbox"/> Additional comments:/ [Printed ephemera] [2] p.
Commentaires supplémentaires: | |

This item is filmed at the reduction ratio checked below/
Ce document est filmé au taux de réduction indiqué ci-dessous.

10X	12X	14X	16X	18X	20X	22X	24X	26X	28X	30X	32X
							✓				

The copy filmed here has been reproduced thanks to the generosity of:

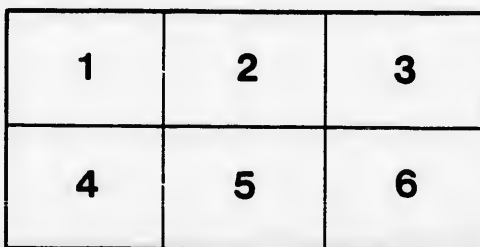
New Brunswick Museum
Saint John

The images appearing here are the best quality possible considering the condition and legibility of the original copy and in keeping with the filming contract specifications.

Original copies in printed paper covers are filmed beginning with the front cover and ending on the last page with a printed or illustrated impression, or the back cover when appropriate. All other original copies are filmed beginning on the first page with a printed or illustrated impression, and ending on the last page with a printed or illustrated impression.

The last recorded frame on each microfiche shall contain the symbol \rightarrow (meaning "CONTINUED"), or the symbol ∇ (meaning "END"), whichever applies.

Maps, plates, charts, etc., may be filmed at different reduction ratios. Those too large to be entirely included in one exposure are filmed beginning in the upper left hand corner, left to right and top to bottom, as many frames as required. The following diagrams illustrate the method:



L'exemplaire filmé fut reproduit grâce à la générosité de:

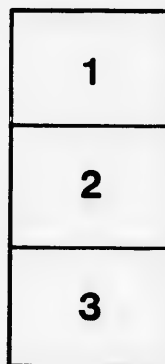
New Brunswick Museum
Saint John

Les images suivantes ont été reproduites avec le plus grand soin, compte tenu de la condition et de la netteté de l'exemplaire filmé, et en conformité avec les conditions du contrat de filmage.

Les exemplaires originaux dont la couverture en papier est imprimée sont filmés en commençant par le premier plat et en terminant soit par la dernière page qui comporte une empreinte d'impression ou d'illustration, soit par le second plat, selon le cas. Tous les autres exemplaires originaux sont filmés en commençant par la première page qui comporte une empreinte d'impression ou d'illustration et en terminant par la dernière page qui comporte une telle empreinte.

Un des symboles suivants apparaîtra sur la dernière image de chaque microfiche, selon le cas: le symbole \rightarrow signifie "A SUIVRE", le symbole ∇ signifie "FIN".

Les cartes, planches, tableaux, etc., peuvent être filmés à des taux de réduction différents. Lorsque le document est trop grand pour être reproduit en un seul cliché, il est filmé à partir de l'angle supérieur gauche, de gauche à droite, et de haut en bas, en prenant le nombre d'images nécessaire. Les diagrammes suivants illustrent la méthode.



THE
NEW BRUNSWICK
MUSEUM

34560

34560.

Giant's Coffin, Star Chamber, Gothic Chapel, Lovers' Leap, Devil's A. Chair, Chief City, River Styx, Echo River, Orogan's Hall, Great Western, Snowball Room, Paradise.

This portion of the entertainment concludes with the magnificent Tableau of

THE FAIRIES' GROTTO!

The Spirit of the Mine and his wood holding Torches of Real Fire.

THE WORLD RENOWNED RIVER AND

CATARAQT OF NIAGARA:

In Summer and Winter—by Daylight and Moonlight. The River Niagara, with all the Border Scenery from Lake Ontario to Lake Erie—Villages, Cities, Forts, Brock's Monument, the Suspension Bridge, Whirlpool Rapids, Islands, &c., &c., with the Great American and British Falls.

ALSO, THE WINDY'S LEDGE LIGHT-HOUSE.

As it appeared previous to its destruction in the gale of March last.

To the above-mentioned beautiful and most attractive objects, the magnificent Mirror of the whole Exterior and Interior of the great

CRYSTAL PALACE

has been added, embracing every feature of splendor, utility, or interest therein! This noble work of art, the superbest of the age, is from the studio of the illustrious Signor Bartolomeo, and was purchased by Mr. Howarth, for the sum of \$15,000. In it we have

THE WHOLE EXTERIOR OF THE PALACE!

Its glittering walls dash up like some gigantic giant from amid the green and glorious foliage of Hyde Park's ancestral trees. The roof is crowned with the Flags of a Hundred Nations! the banner of the Stars and Stripes waving beside that of the "Union Jack" of Britain. Around the shining edifice roll the carriages of the nobility; and, in the foreground, we have

Bearing the Queen, Prince Albert, and the Royal Children! a multitude of visitors in the Park, dressed in every variety of costume, each figure in the countless groups character of a nation!

The whole interior of the World's Fair!

The Nave, from East to West!

The Transept from North to South!

The Great Crystal Fountain!

Standing 37 feet high, and Weighing Four Tons.

Sculpture, Shawls and Laces, Jewels and Embroidery, Glass and Architectural Design! Venus and Cupid! Virginus and his Daughter!

EXCELLENT PORTRAITS OF

EXCELLENT PORTRAITS OF
THE QUEEN! PRINCE ALBERT! AND THE PRINCE OF WALES!
ALSO OF THE AMERICAN MINISTER,
THE HON. ABBOTT LAWRENCE & HIS FAMILY.

FROM THE UNITED STATES!—The Messrs. McAdams, of Boston; the Messrs. Allen, of New York; Taylor and Adams, Engravers, Boston; Equestrian Statues of the Queen and Prince Albert!
HIRSH POWERS' "GREEK SLAVE," The Nymph undressing for the bath; Brilliant
Through: Dazzling Drapery; Internal Economy and the London Police!

The Goods from France and Austria, Persia, England, Russia and Germany,

THE HON. E. HOOR DIAMOND,

Worth Ten Millions of Dollars!

The whole to conclude with

THE YACHT AMERICA,

Just as she appeared when winning the Great Race at Cowes, on the 22d of August, 1851.

The Management respectfully announces that, owing to engagements previously contracted, this great National Work of Art can remain but a few days in this place and they would therefore urge upon their friends and patrons the necessity of an early attendance. Upon the above Afternoons, an Entertainment will take place; and so excellent are the arrangements for darkening the room, &c. that the illusory effect is quite as perfect at these exhibitions, as at those every evening. Ladies, and Families residing at a distance from town, will find the Day Entertainment very convenient to attend.

The public are respectfully informed that this unrivalled entertainment has been produced at a cost of

FOURTY FIVE THOUSAND DOLLARS!

In point of beauty, finish, interest, diversity and intricacy of the subject, it leaves all competition to toil after it in vain; and, as all the views were taken by artists on the spot, no doubt as to its Perfect Fidelity can be entertained.

PROPRIETOR
STAGE MANAGER AND DELINEATOR
CHIEF MUSICIAN and VOCALIST,

JOHN HOWORTH
RUFUS CHOATE SJMERBY
SIGNORA PRINCIPA

This Exhibition has visited most of the cities of the Union, and has been witnessed in Boston alone, by over

300,000 PERSONS.

And is spoken of in the highest terms of praise,

ADMISSION 25 CENTS.

** Doors open in the Evening at 7 o'clock.

To commence at 8 o'clock.

AVERY, PRINTER.

WILL OPEN AT
TEMPERANCE HALL, CARLETON,
ON WEDNESDAY EVENING, SEPT. 22,
FOR THREE NIGHTS ONLY!!

HOWORTH'S
GREAT NATIONAL PANORAMA OF THE
WONDERS OF THE WORLD;

A Magnificent and Elaborately faithful Mirror of
EARTH'S MYSTERIES AND INDUSTRY.

This unrivalled work of art comprises the National World, and the Brightest Trophy of human Industry and
Genius! In the great

CRYSTAL PALACE!



— OR —
PALACE OF INDUSTRY!

Wherein the Miracles of Science Art and natural productiveness are col-
lected from all quarters and corners of the civilized World
in the year 1851.

Brilliantly Patronized, the highly popular Progressive Mirror of the
GREAT CATARACT OF NIAGARA

By Daylight and by Moonlight, in Winter and in Summer, from fifty varying points of view, selected for
the development of beauties of the

GREAT CATAWAG OF NIAGARA

By Daylight and by Moonlight, in Winter and in Summer, from fifty varying points of view, selected for the development of beauties often either overlooked or unattainable to the mere Tourist.

Followed by that Stupendous Natural Curiosity,

Mammoth Cave!

The Management are happy to announce that they have engaged the services of the eminent vocalist

SIGNORA PRINCIPA.

Who will introduce the following songs varied at each Entertainment:

The Rival Lovers; Oh! take me home to die; Sixty two; Female Auctioneer; Sailor Boy's last Dream; Nelly Bly; Low Backed Car; Eight dollars a day; Home of my childhood; The Exile of Erin; Butter and Cheese; Ben Bolt; I've left the Snow Clad Hills; Will you come to my mountain home; Love song; The Indians home; Stop that Knocking.

THIS UNEQUALLED PANORAMA COMPRISES THE

MAMMOTH CAVE OF KENTUCKY!



In 47 successive Scenes of Awful Grandeur and Sublimity. No Fancy Sketch—but Nature's own mysterious hand at work within this Gorgeous and Unfathomable Laboratory! Halls of Solid Crystal!

Stupendous Arches, soaring up into the Unillumined Darkness! The Dazzling and Fantastic Fairies Grotto! The Fabled Shores of the Styx, and the Dark Tide of Lethe! Lakes and Rivers!

Some of the latter large enough to float a Navy. Stalagmite and Stalactite Pillars, supporting the Vaulted Roof, and numberless Crystalline Incrustations on every side, all brilliantly illuminated by the Glare of

Five Hundred Torches, whose light is tripled in the reflected flashes of the Glaring Dome, and

Adamantine Pillars. All these conspire to present a scene beautiful beyond the mere powers of imagination, if unassisted by the Pencil of the Artist, and create in the heart of every beholder

mingled emotions of wonder, Reverence and Admiration. This Cave has been explored

in all its various Avanes, Upwards of 600 Miles in Length, and in its

Awful Depths 658 Feet. The following are some of the principal objects represented.

SEE OTHER SIDE.

