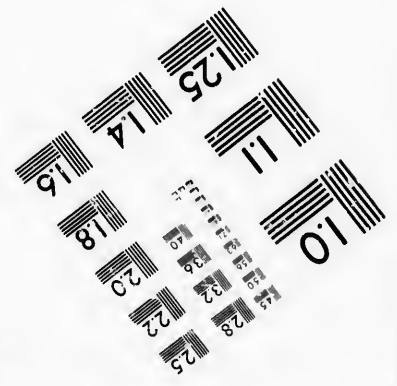
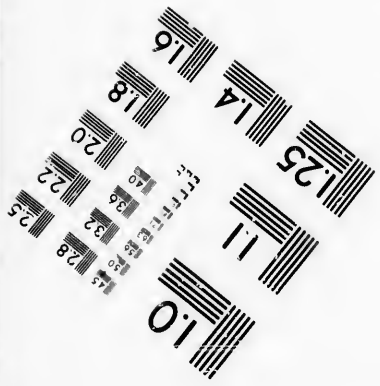
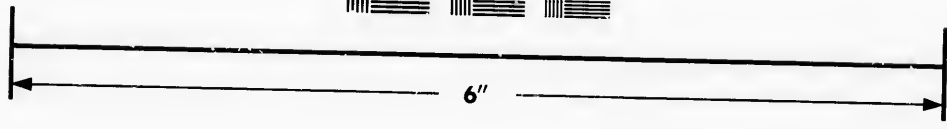
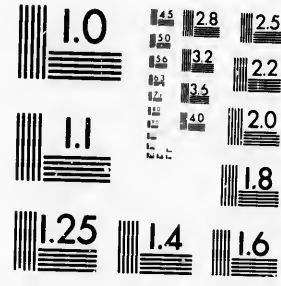


**IMAGE EVALUATION
TEST TARGET (MT-3)**



**Photographic
Sciences
Corporation**

23 WEST MAIN STREET
WEBSTER, N.Y. 14580
(716) 872-4503



**CIHM/ICMH
Microfiche
Series.**

**CIHM/ICMH
Collection de
microfiches.**



Canadian Institute for Historical Microreproductions / Institut canadien de microreproductions historiques



© 1986

Technical and Bibliographic Notes/Notes techniques et bibliographiques

The Institute has attempted to obtain the best original copy available for filming. Features of this copy which may be bibliographically unique, which may alter any of the images in the reproduction, or which may significantly change the usual method of filming, are checked below.

L'Institut a microfilmé le meilleur exemplaire qu'il lui a été possible de se procurer. Les détails de cet exemplaire qui sont peut-être uniques du point de vue bibliographique, qui peuvent modifier une image reproduite, ou qui peuvent exiger une modification dans la méthode normale de filmage sont indiqués ci-dessous.

- | | |
|--|--|
| <input type="checkbox"/> Coloured covers/
Couverture de couleur | <input type="checkbox"/> Coloured pages/
Pages de couleur |
| <input type="checkbox"/> Covers damaged/
Couverture endommagée | <input type="checkbox"/> Pages damaged/
Pages endommagées |
| <input type="checkbox"/> Covers restored and/or laminated/
Couverture restaurée et/ou pelliculée | <input type="checkbox"/> Pages restored and/or laminated/
Pages restaurées et/ou pelliculées |
| <input type="checkbox"/> Cover title missing/
Le titre de couverture manque | <input checked="" type="checkbox"/> Pages discoloured, stained or foxed/
Pages décolorées, tachetées ou piquées |
| <input type="checkbox"/> Coloured maps/
Cartes géographiques en couleur | <input type="checkbox"/> Pages detached/
Pages détachées |
| <input type="checkbox"/> Coloured ink (i.e. other than blue or black)/
Encre de couleur (i.e. autre que bleue ou noire) | <input checked="" type="checkbox"/> Showthrough/
Transparence |
| <input type="checkbox"/> Coloured plates and/or illustrations/
Planches et/ou illustrations en couleur | <input type="checkbox"/> Quality of print varies/
Qualité inégale de l'impression |
| <input type="checkbox"/> Bound with other material/
Relié avec d'autres documents | <input type="checkbox"/> Includes supplementary material/
Comprend du matériel supplémentaire |
| <input type="checkbox"/> Tight binding may cause shadows or distortion
along interior margin/
La reliure serrée peut causer de l'ombre ou de la
distorsion le long de la marge intérieure | <input type="checkbox"/> Only edition available/
Seule édition disponible |
| <input type="checkbox"/> Blank leaves added during restoration may
appear within the text. Whenever possible, these
have been omitted from filming/
Il se peut que certaines pages blanches ajoutées
lors d'une restauration apparaissent dans le texte,
mais, lorsque cela était possible, ces pages n'ont
pas été filmées. | <input type="checkbox"/> Pages wholly or partially obscured by errata
slips, tissues, etc., have been refilmed to
ensure the best possible image/
Les pages totalement ou partiellement
obscurcies par un feuillet d'errata, une pelure,
etc., ont été filmées à nouveau de façon à
obtenir la meilleure image possible. |
| <input checked="" type="checkbox"/> Additional comments:
Commentaires supplémentaires: | Docket title page is bound in as last page in book but filmed as first page on fiche. |

This item is filmed at the reduction ratio checked below/
Ce document est filmé au taux de réduction indiqué ci-dessous.

10X	12X	14X	16X	18X	20X	22X	24X	26X	28X	30X	32X
										✓	

The copy filmed here has been reproduced thanks to the generosity of:

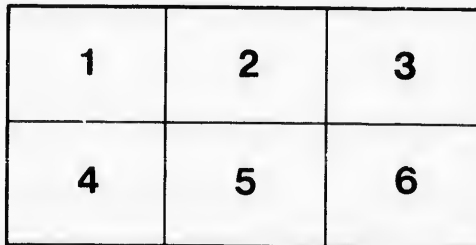
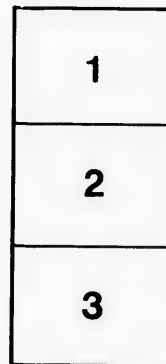
Library of the Public
Archives of Canada

The images appearing here are the best quality possible considering the condition and legibility of the original copy and in keeping with the filming contract specifications.

Original copies in printed paper covers are filmed beginning with the front cover and ending on the last page with a printed or illustrated impression, or the back cover when appropriate. All other original copies are filmed beginning on the first page with a printed or illustrated impression, and ending on the last page with a printed or illustrated impression.

The last recorded frame on each microfiche shall contain the symbol \rightarrow (meaning "CONTINUED"), or the symbol ∇ (meaning "END"), whichever applies.

Maps, plates, charts, etc., may be filmed at different reduction ratios. Those too large to be entirely included in one exposure are filmed beginning in the upper left hand corner, left to right and top to bottom, as many frames as required. The following diagrams illustrate the method:



L'exemplaire filmé fut reproduit grâce à la générosité de:

La bibliothèque des Archives
publiques du Canada

Les images suivantes ont été reproduites avec le plus grand soin, compte tenu de la condition et de la netteté de l'exemplaire filmé, et en conformité avec les conditions du contrat de filmage.

Les exemplaires originaux dont la couverture en papier est imprimée sont filmés en commençant par le premier plat et en terminant soit par la dernière page qui comporte une empreinte d'impression ou d'illustration, soit par le second plat, selon le cas. Tous les autres exemplaires originaux sont filmés en commençant par la première page qui comporte une empreinte d'impression ou d'illustration et en terminant par la dernière page qui comporte une telle empreinte.

Un des symboles suivants apparaîtra sur la dernière image de chaque microfiche, selon le cas: le symbole \rightarrow signifie "A SUIVRE", le symbole ∇ signifie "FIN".

Les cartes, planches, tableaux, etc., peuvent être filmés à des taux de réduction différents. Lorsque le document est trop grand pour être reproduit en un seul cliché, il est filmé à partir de l'angle supérieur gauche, de gauche à droite, et de haut en bas, en prenant le nombre d'images nécessaire. Les diagrammes suivants illustrent la méthode.

STATISTICS OF CRIME

OF THE

CITY OF QUEBEC,

FORM

1st January to 31st December, 1846.

3 Jan 1846

Robert M. G. Clarke

230 D

R. G. Clarke

W. H. M. M. M.

James N. P. M. L. 2. 5.

27 Jan 47

James N. P. M. L. 2. 5.

24 Feb

221

2 5

L 23 5

24 Feb 47

170

24 Mrs. Dely

170

STATISTICS OF CRIME AND OFFENCES IN THE CITY AND DISTRICT OF QUEBEC.

Showing the number of Persons brought before the INSPECTOR AND SUPERINTENDANT OF POLICE, and the manner in which they were disposed of:—
from 1st January to 31st December, 1846.

1846.	Offences under Common and Statute Laws, but neither within the Police Ordinance nor the Merchant Seaman's Act:— How disposed of.—												Offences under Police Ordinance.					Committed to House of Corrections, in default of payment of the fine imposed, which varies from 2s 6d to £5 5s.																							
	Uttering bad notes.	Bigamy.	Swindling.	Larceny.	Suspicion of Larceny.	Disorderly House.	Assault and Battery.	Threats and Insults.	Breach of the Peace.	Desertion (Apprentices and Servants.)	Damage to property.	Total Offences.	Sent to Queen's Bench.	Sent to Quarter Sessions.	Weekly sittings.	Summary trial.	Bailed to keep the Peace.	Discharged.	Total disposed of.	Drunk and impeding passengers in the street.	Vagrants.	Breach of the Peace.	Neglecting to Work.	Total Offences.	Fines imposed upon Persons up to £5 cy. & the same being paid they were discharged.	From 24 hours to 1 week inclusive.	From 1 week to 1 month inclusive.	From 1 to 2 m. inclusive.	Discharged indiscriminately.												
January	1	1	1	5	2	3	13	7	1	1	48	13	9	1	19	9	1	18	11	2	5	5	7	5	2	2	4	9	21	31	10										
February	1	1	1	5	2	3	18	7	1	1	42	9	9	3	13	11	1	15	17	3	6	9	6	7	5	2	2	4	20	12	43	9									
March	1	1	1	8	2	3	25	6	1	1	65	19	15	2	15	16	1	22	17	5	21	9	6	13	11	9	6	14	19	19	8										
April	1	1	1	6	2	3	31	4	1	1	67	11	13	3	10	10	1	22	30	1	15	1	4	27	2	2	9	15	10	16	8										
May	1	1	1	7	2	3	31	4	1	1	67	13	10	3	11	11	1	22	30	1	11	1	4	27	11	10	13	11	13	16	7										
June	1	1	1	11	2	3	52	2	1	1	91	23	23	3	12	13	1	31	39	1	15	15	7	16	6	5	10	12	13	13	7										
July	1	1	1	13	2	3	98	5	1	1	113	18	18	3	11	13	1	31	44	1	17	3	4	17	41	3	25	30	12	13	8										
August	1	1	1	13	2	3	41	4	1	1	92	11	11	2	13	13	1	22	32	1	13	4	4	14	11	8	11	16	15	16	7										
September	1	1	1	6	1	1	20	1	1	1	32	5	5	2	5	5	1	7	9	1	5	3	3	7	4	3	8	11	8	9	6										
October	1	1	1	4	1	1	13	1	1	1	22	3	3	3	3	3	1	4	5	1	3	1	3	4	1	2	2	5	5	5	5										
November	1	1	1	4	1	1	10	1	1	1	22	3	3	3	3	3	1	4	5	1	3	1	3	4	1	2	2	5	5	5	5										
December	1	1	1	4	1	1	21	1	1	1	32	5	5	5	5	5	1	7	9	1	5	3	3	7	4	3	8	11	8	9	6										
Total	1	1	1	78	10	7	50	10	153	71	116	40	33	5	2	4	11	920	4	171	28	571	1908	11	9	27	141	252	135	4	58	1218	333	335	4	101	119	124	158	317	111

OFFENCES UNDER THE MERCHANT SEAMAN'S ACT.

1846.	OFFENCES.				CONVICTIONS.			
	Description.	Absent without leave.	Refusal of duty.	Not to proceed to Sea.	Convicted but not on board.	Committed for 30 days.	Committed for 60 days.	Total of convictions.
January	1	5	1	1	1	1	1	4
February	1	4	1	1	1	1	1	5
March	1	4	1	1	1	1	1	5
April	1	4	1	1	1	1	1	5
May	1	4	1	1	1	1	1	5
June	1	4	1	1	1	1	1	5
July	1	4	1	1	1	1	1	5
August	1	4	1	1	1	1	1	5
September	1	4	1	1	1	1	1	5
October	1	4	1	1	1	1	1	5
November	1	4	1	1	1	1	1	5
Total	12	53	16	16	12	12	12	60

RECAPITULATION.

Total number of Offences under Common and Statute Laws, and under Police Ordinance, Merchant Seaman's Act.	Comparative State—		Increase for 1846.	Decrease for 1846.
	1846.	1845.		
Total number of Offences under Common and Statute Laws, and under Police Ordinance, Merchant Seaman's Act.	939	791	139	—
Do. do. under Merchant Seaman's Act.	718	1531	—	631
Grand total	3083	4376	1293	631

Amount of fines paid under the Police Ordinance and Provincial Statute 4 & 5 Vic. Chap. 27, from 1st January to 31st December, 1846.
Do. do. for the Year 1845.
Increase over last Year 2436 0 4
619 are seamen.

To JOHN McLEOD, Esq.,
Clerk of the Peace
Committee.

R. H. RUSSELL,
Chief of Police.

