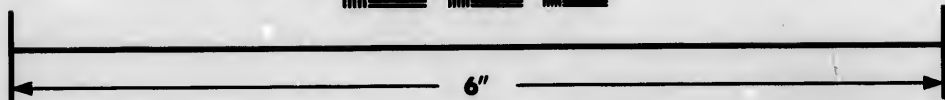
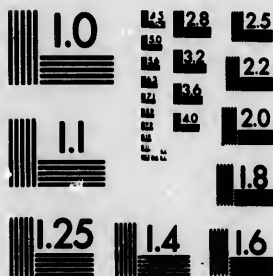


**IMAGE EVALUATION
TEST TARGET (MT-3)**



**Photographic
Sciences
Corporation**

23 WEST MAIN STREET
WEBSTER, N.Y. 14580
(716) 872-4503

125
122
120
118

**CIHM/ICMH
Microfiche
Series.**

**CIHM/ICMH
Collection de
microfiches.**



Canadian Institute for Historical Microreproductions / Institut canadien de microreproductions historiques

01
01

© 1985

Technical and Bibliographic Notes/Notes techniques et bibliographiques

The Institute has attempted to obtain the best original copy available for filming. Features of this copy which may be bibliographically unique, which may alter any of the images in the reproduction, or which may significantly change the usual method of filming, are checked below.

L'Institut a microfilmé le meilleur exemplaire qu'il lui a été possible de se procurer. Les détails de cet exemplaire qui sont peut-être uniques du point de vue bibliographique, qui peuvent modifier une image reproduite, ou qui peuvent exiger une modification dans la méthode normale de filmage sont indiqués ci-dessous.

- Coloured covers/
Couverture de couleur
- Covers damaged/
Couverture endommagée
- Covers restored and/or laminated/
Couverture restaurée et/ou pelliculée
- Cover title missing/
Le titre de couverture manque
- Coloured maps/
Cartes géographiques en couleur
- Coloured ink (i.e. other than blue or black)/
Encre de couleur (i.e. autre que bleue ou noire)
- Coloured plates and/or illustrations/
Planches et/ou illustrations en couleur
- Bound with other material/
Relié avec d'autres documents
- Tight binding may cause shadows or distortion along interior margin/
La reliure serrée peut causer de l'ombre ou de la distorsion le long de la marge intérieure
- Blank leaves added during restoration may appear within the text. Whenever possible, these have been omitted from filming/
Il se peut que certaines pages blanches ajoutées lors d'une restauration apparaissent dans le texte, mais, lorsque cela était possible, ces pages n'ont pas été filmées.
- Additional comments:/
Commentaires supplémentaires:

Wrinkled pages may film slightly out of focus.

- Coloured pages/
Pages de couleur
- Pages damaged/
Pages endommagées
- Pages restored and/or laminated/
Pages restaurées et/ou pelliculées
- Pages discoloured, stained or foxed/
Pages décolorées, tachetées ou piquées
- Pages detached/
Pages détachées
- Showthrough/
Transparence
- Quality of print varies/
Qualité inégale de l'impression
- Includes supplementary material/
Comprend du matériel supplémentaire
- Only edition available/
Seule édition disponible
- Pages wholly or partially obscured by errata slips, tissues, etc., have been refilmed to ensure the best possible image/
Les pages totalement ou partiellement obscurcies par un feuillet d'errata, une pelure, etc., ont été filmées à nouveau de façon à obtenir la meilleure image possible.

This item is filmed at the reduction ratio checked below/
Ce document est filmé au taux de réduction indiqué ci-dessous.

10X	12X	14X	16X	18X	20X	22X	24X	26X	28X	30X	32X
								✓			

The copy filmed here has been reproduced thanks to the generosity of:

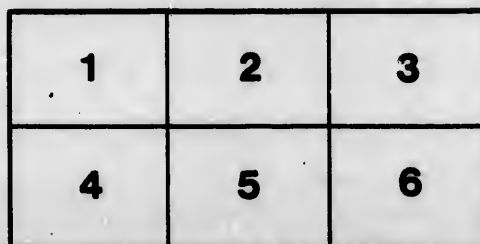
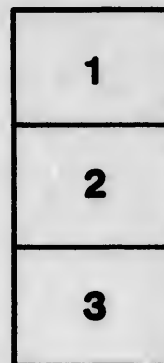
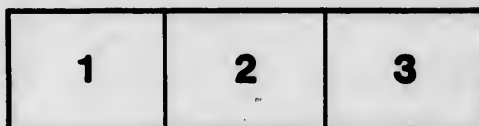
University of Saskatchewan
Saskatoon

The images appearing here are the best quality possible considering the condition and legibility of the original copy and in keeping with the filming contract specifications.

Original copies in printed paper covers are filmed beginning with the front cover and ending on the last page with a printed or illustrated impression, or the back cover when appropriate. All other original copies are filmed beginning on the first page with a printed or illustrated impression, and ending on the last page with a printed or illustrated impression.

The last recorded frame on each microfiche shall contain the symbol \rightarrow (meaning "CONTINUED"), or the symbol ∇ (meaning "END"), whichever applies.

Maps, plates, charts, etc., may be filmed at different reduction ratios. Those too large to be entirely included in one exposure are filmed beginning in the upper left hand corner, left to right and top to bottom, as many frames as required. The following diagrams illustrate the method:



L'exemplaire filmé fut reproduit grâce à la générosité de:

University of Saskatchewan
Saskatoon

Les images suivantes ont été reproduites avec le plus grand soin, compte tenu de la condition et de la netteté de l'exemplaire filmé, et en conformité avec les conditions du contrat de filmage.

Les exemplaires originaux dont la couverture en papier est imprimée sont filmés en commençant par le premier plat et en terminant soit par la dernière page qui comporte une empreinte d'impression ou d'illustration, soit par le second plat, selon le cas. Tous les autres exemplaires originaux sont filmés en commençant par la première page qui comporte une empreinte d'impression ou d'illustration et en terminant par la dernière page qui comporte une telle empreinte.

Un des symboles suivants apparaîtra sur la dernière image de chaque microfiche, selon le cas: le symbole \rightarrow signifie "A SUIVRE", le symbole ∇ signifie "FIN".

Les cartes, planches, tableaux, etc., peuvent être filmés à des taux de réduction différents. Lorsque le document est trop grand pour être reproduit en un seul cliché, il est filmé à partir de l'angle supérieur gauche, de gauche à droite, et de haut en bas, en prenant le nombre d'images nécessaires. Les diagrammes suivants illustrent la méthode.



Abel Howard

H. H. H. H. H.

BRYAN EDWARDS ESQ.^R

History of the British
WEST INDIES
By
Bryan Edwards Esq.
F.R.S.

S. 1076
12/6/20.



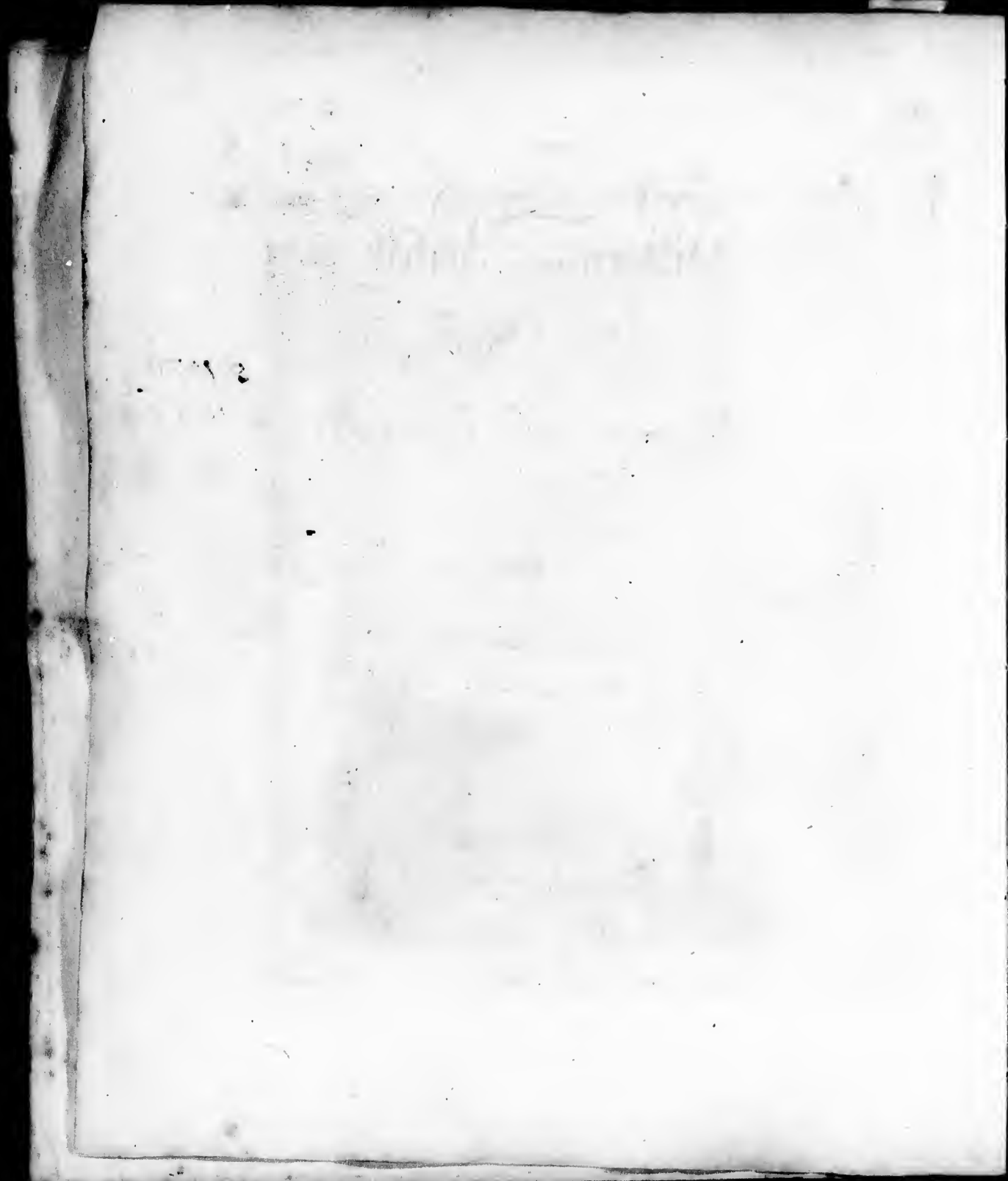
With a continuation to the present Time
Shoxt Library

ILLUSTRATED BY
Maps & Plates
IN FIVE VOLUMES



LONDON

Printed for the Proprietors, 1818.



CHRISTOPHER COLUMBUS and his SONS DIEGO and FERDINAND.

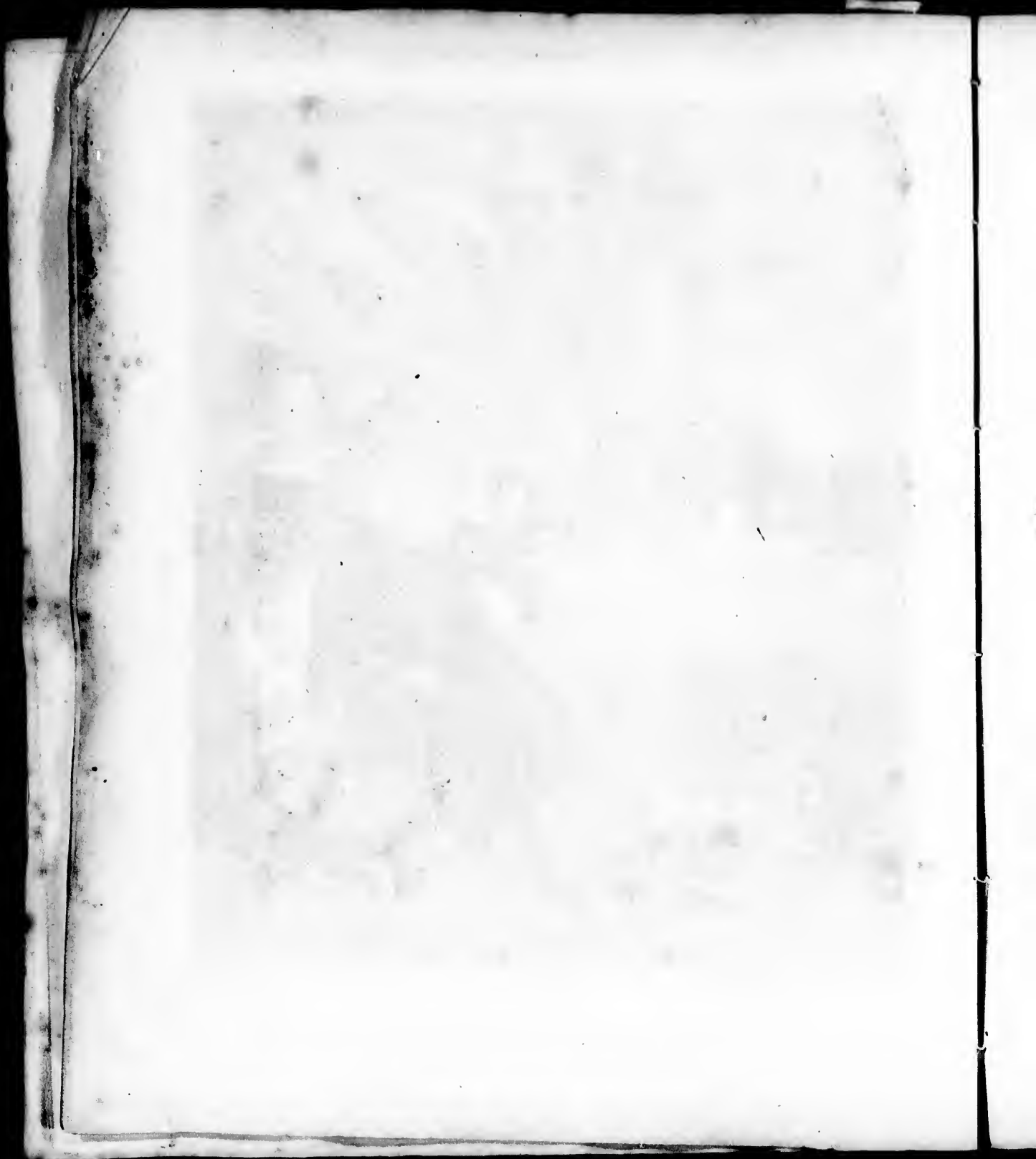


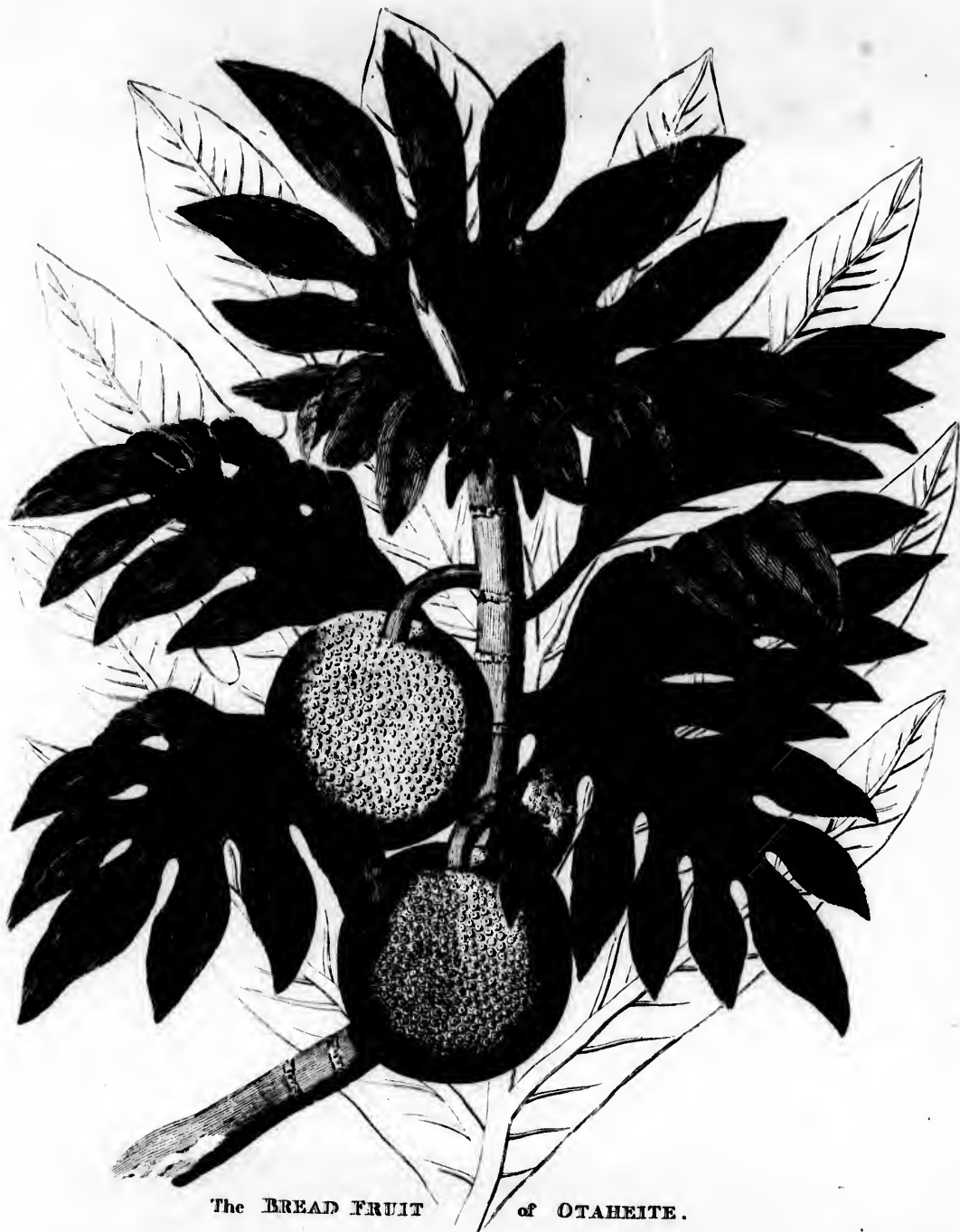
Wilson sculp.

*From an ancient Spanish picture in the possession of Edward Home Esq:
of Bevis Mount near Southampton.*



Inverell Library





The BREAD FRUIT of OTAHEITE.

F. Zanoni sculp.

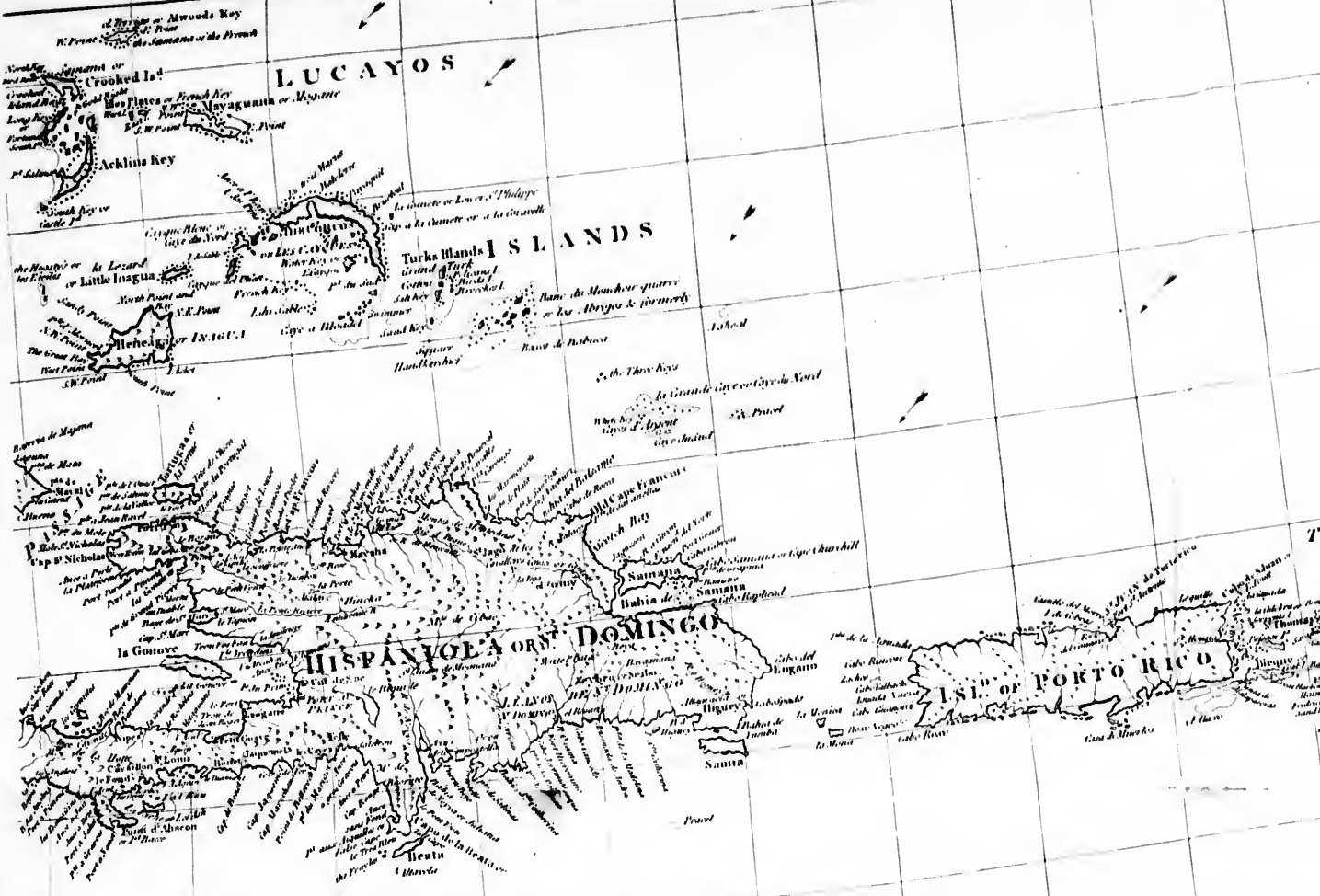




Thorn Library

...MAN CASIODE of the ISLAND of CUBA, ... COLUMBUS
concerning a future state.

OR
Tropic of Cancer



65 64 63 62 61 60 59 58 57 56

25
24
23
22
21
20
19
18
17
16
15

New Map
 of the
WEST INDIES
 with
 the
History
 of the
BRITISH COLONIES
Bryan Edwards Esq

Tropic of Cancer

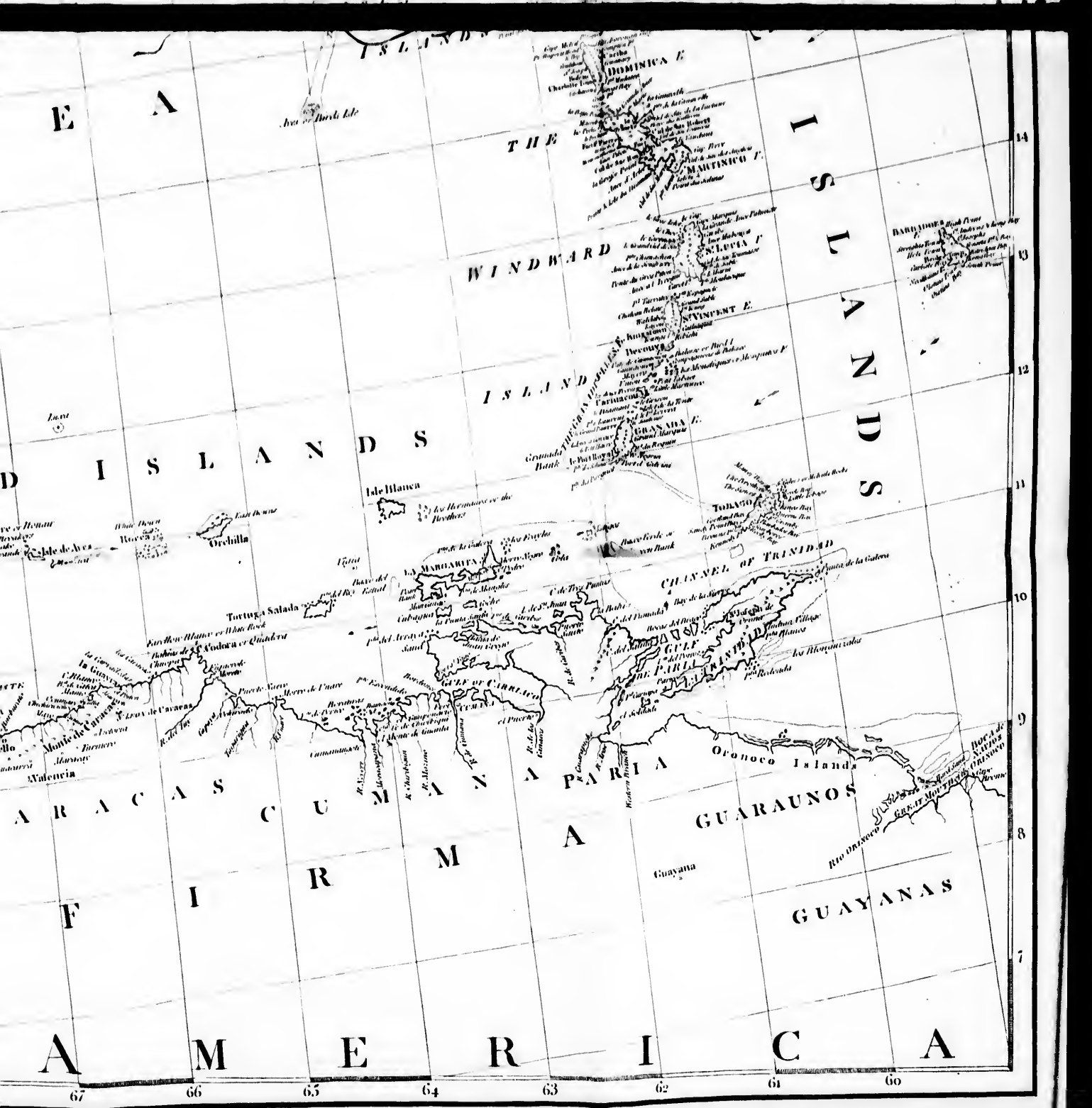


R I B B E A N S E A

L E E W A R D I S



74 73 72 71 70 69 68 67



E A

THE

ISLANDS

WINDWARD

ISLAND

D I S L A N D S

Ile Blanca

Orchilla

CHANNEL OF TRINIDAD

ARACAS

CUMANA

PARIA

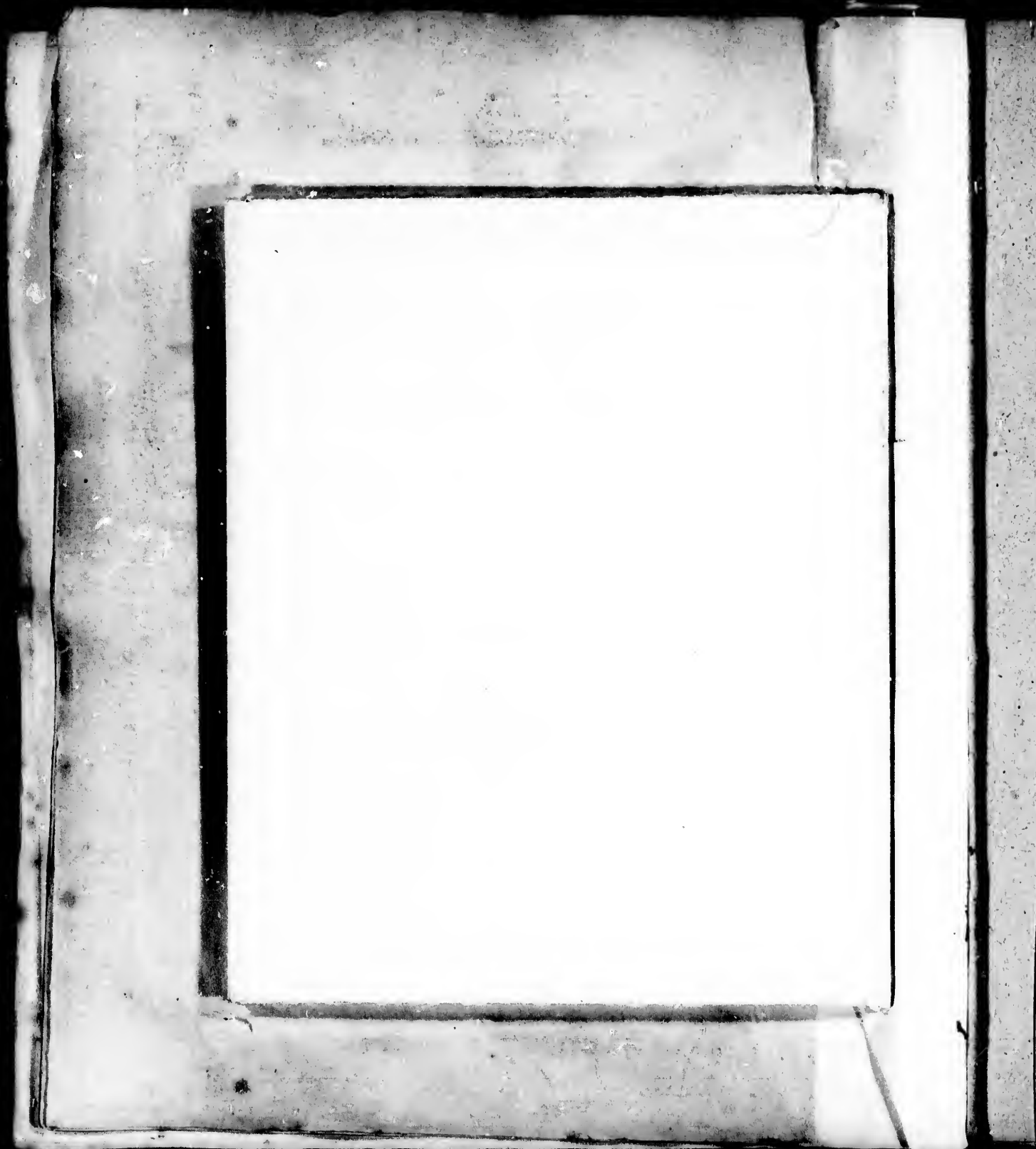
GUARAUNOS

GUAYANAS

A M E R I C A

67 66 65 64 63 62 61 60

14 13 12 11 10 9 8 7





Sherrill Library

**AN INDIAN CACIQUE of the ISLAND of CUBA, addressing COLUMBUS
concerning a future state.**

GULPH OF MEXICO

Tropic of Cancer

Bay of Spiritu Santo
CARLOS BAY
Cape Apud...

B A Y

LOS LLANOS or the Plainland

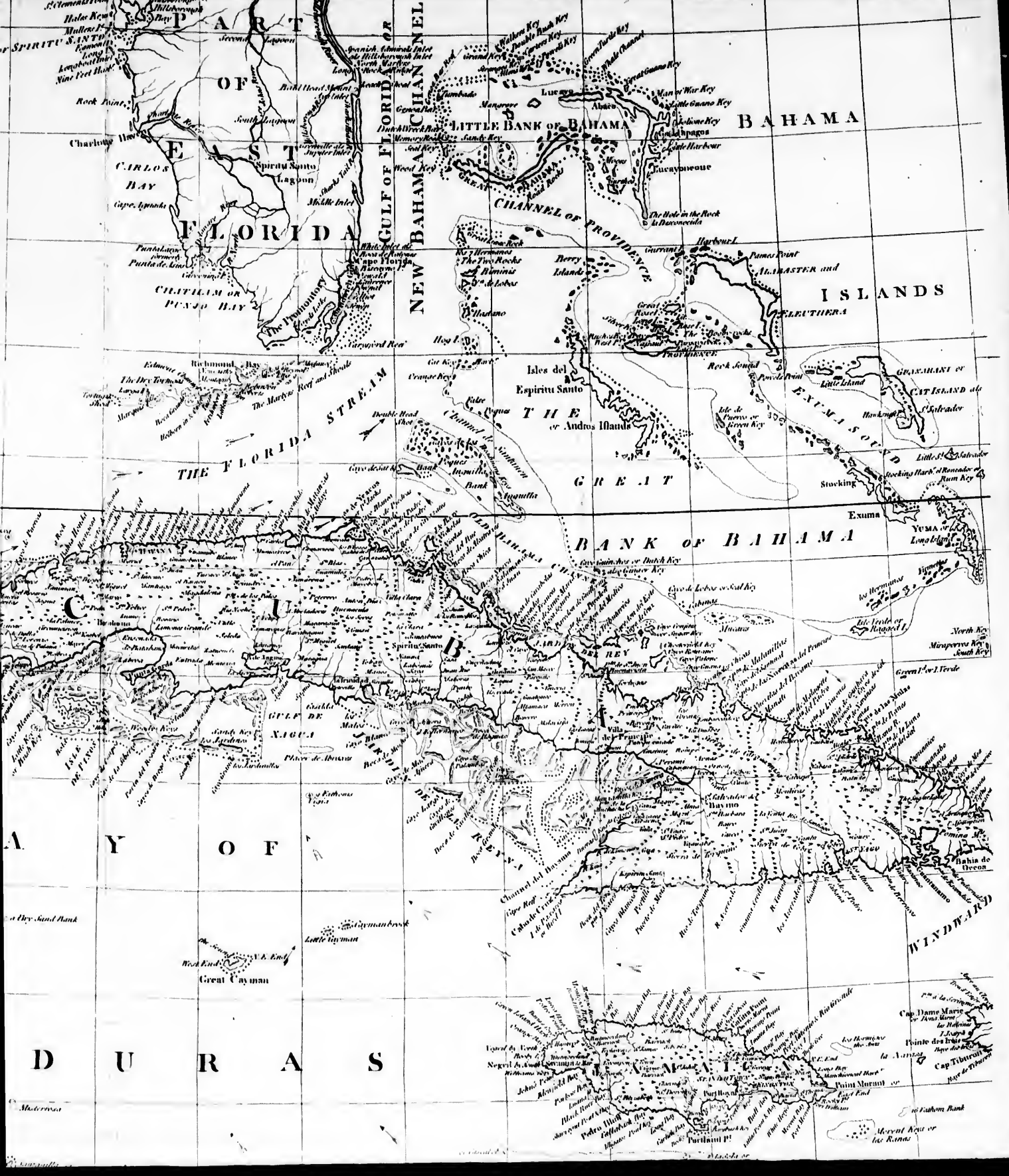
YUCATAN

THE BAY OF

H O N D U

LOGWOOD COUNTRY





PART
SPIRITU SANTO
FLORIDA
GULF OF FLORIDA OR NEW BAHAMA CHANNEL
BANK OF BAHAMA
THE FLORIDA STRAIT
THE GREAT BAHAMA BANK
BANK OF BAHAMA
CAYMAN ISLANDS
KEY WEST
KEY LARGO
KEY BISCAYNE
KEYS
THE BAHAMA ISLANDS
NEW PROVIDENCE
ANDROS
ELEUTHERA
EXUMA
CUBA
HAVANA
MATANZAS
PINAR DEL RIO
CAYMAN ISLANDS
GREAT CAYMAN
KEY WEST
KEY LARGO
KEY BISCAYNE
KEYS
THE BAHAMA ISLANDS
NEW PROVIDENCE
ANDROS
ELEUTHERA
EXUMA
CUBA
HAVANA
MATANZAS
PINAR DEL RIO
CAYMAN ISLANDS
GREAT CAYMAN

H O N D U

LOGWOOD
COUNTRY

VERA
PAZ

HONDURAS

HONDURAS

MOPYALS or POPYALS

MONKITOS SAMBOS

K I L O S S H O R E

C O S T A R I C A

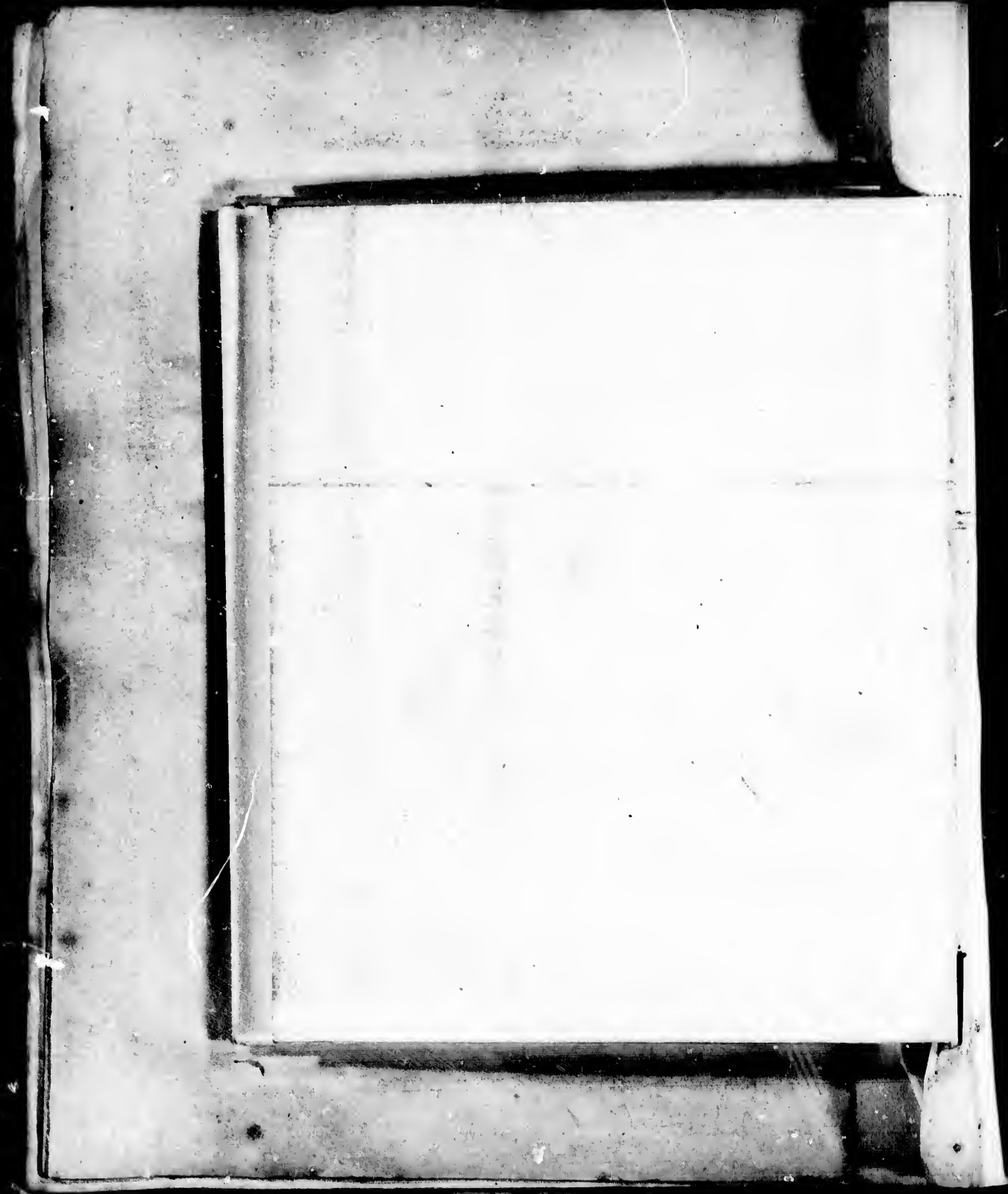
V E R



Longitude West from London

90 89 88 87 86 85 84 83



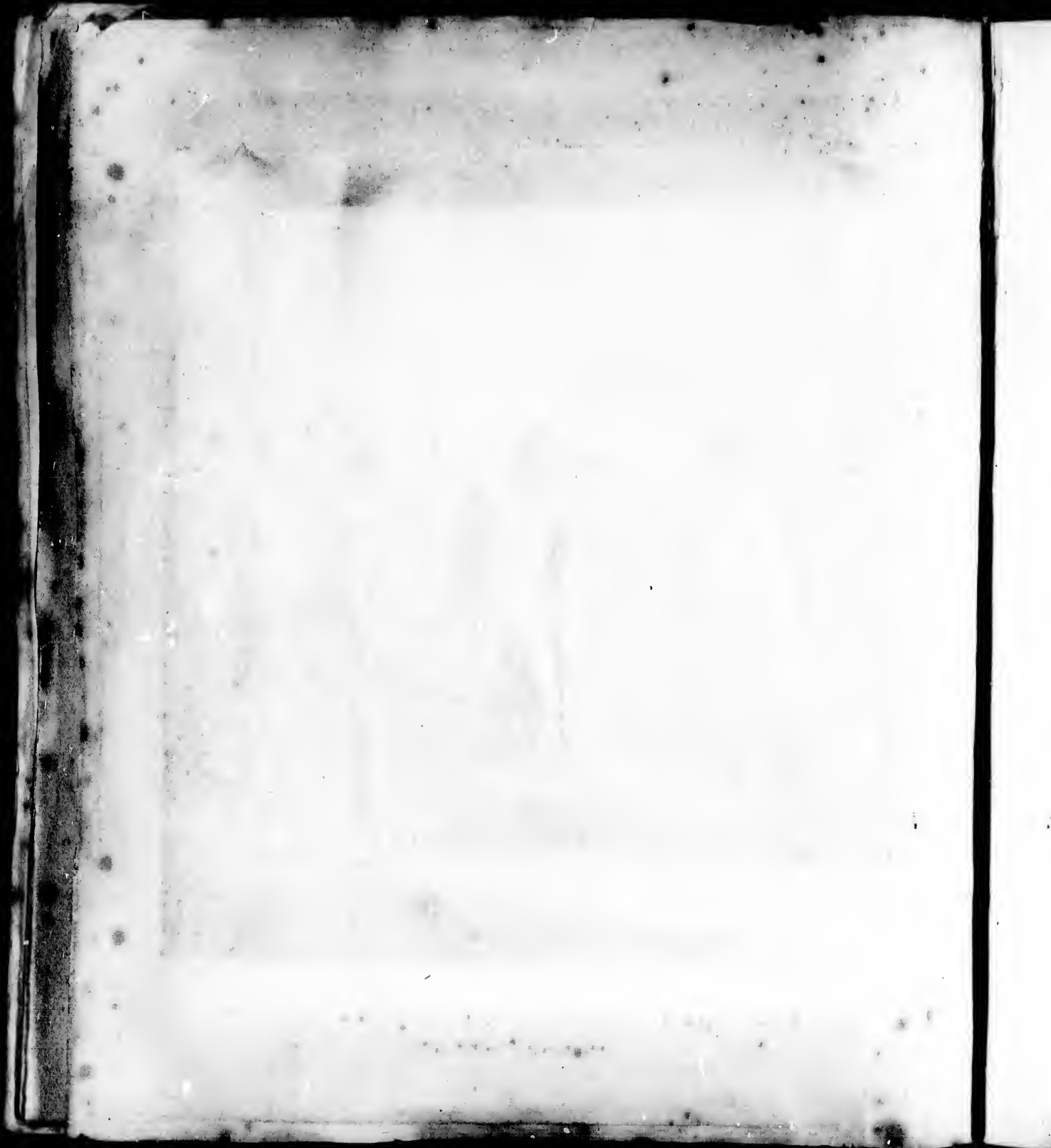




B. West delin.

F. Bartolozzi sculpt.

AN INDIAN CACIQUE of the **ISLAND** of **CUBA**, addressing **COLUMBUS**
concerning a future state.



60°

55°

50°

JOHN HILL
 LIBRARY
 CASSELL & CO. LTD.
 BUNGAY

ir
Bay

apex under (o Charnock).

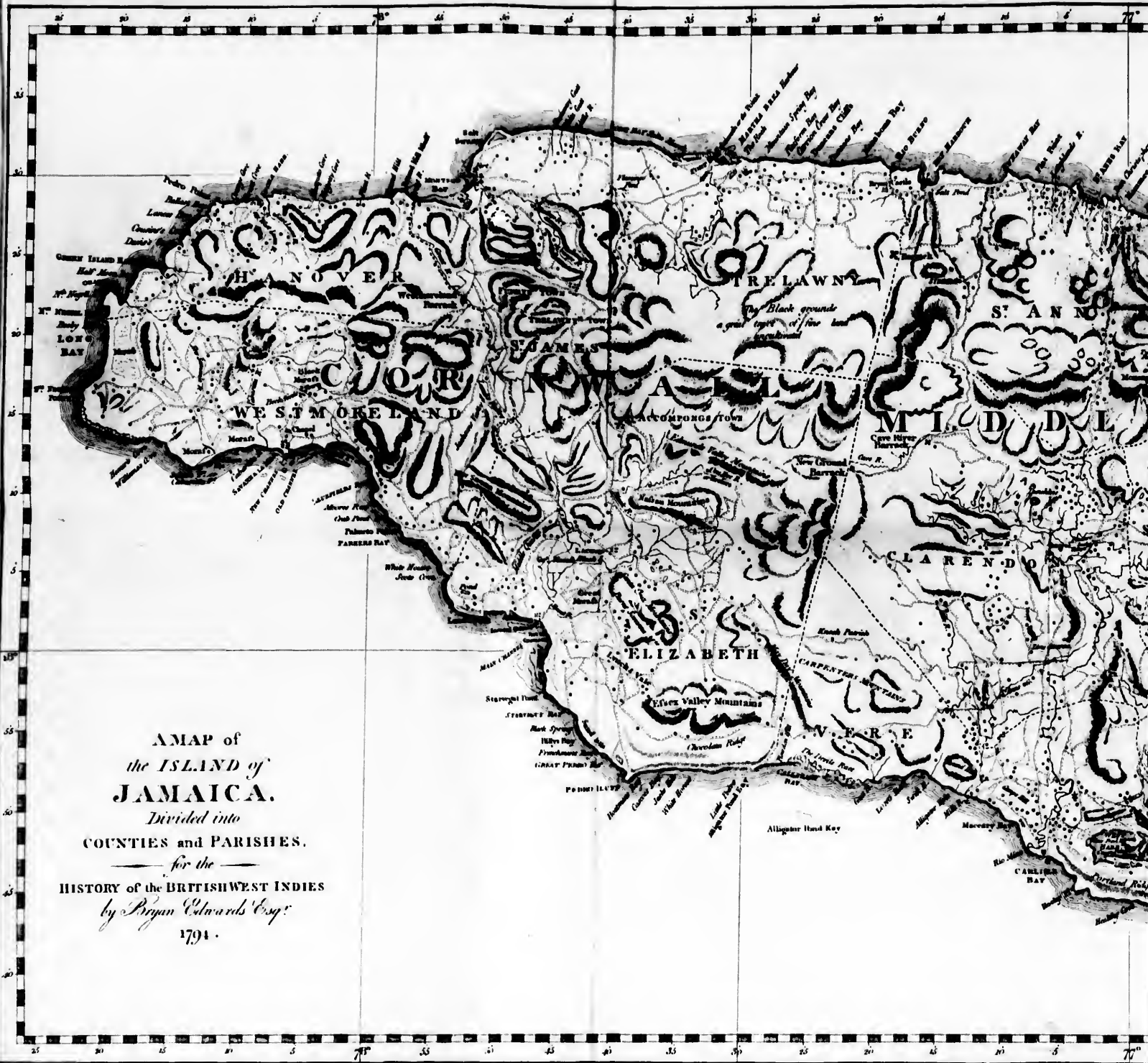
60°

Longitude West from London.

55°

50°

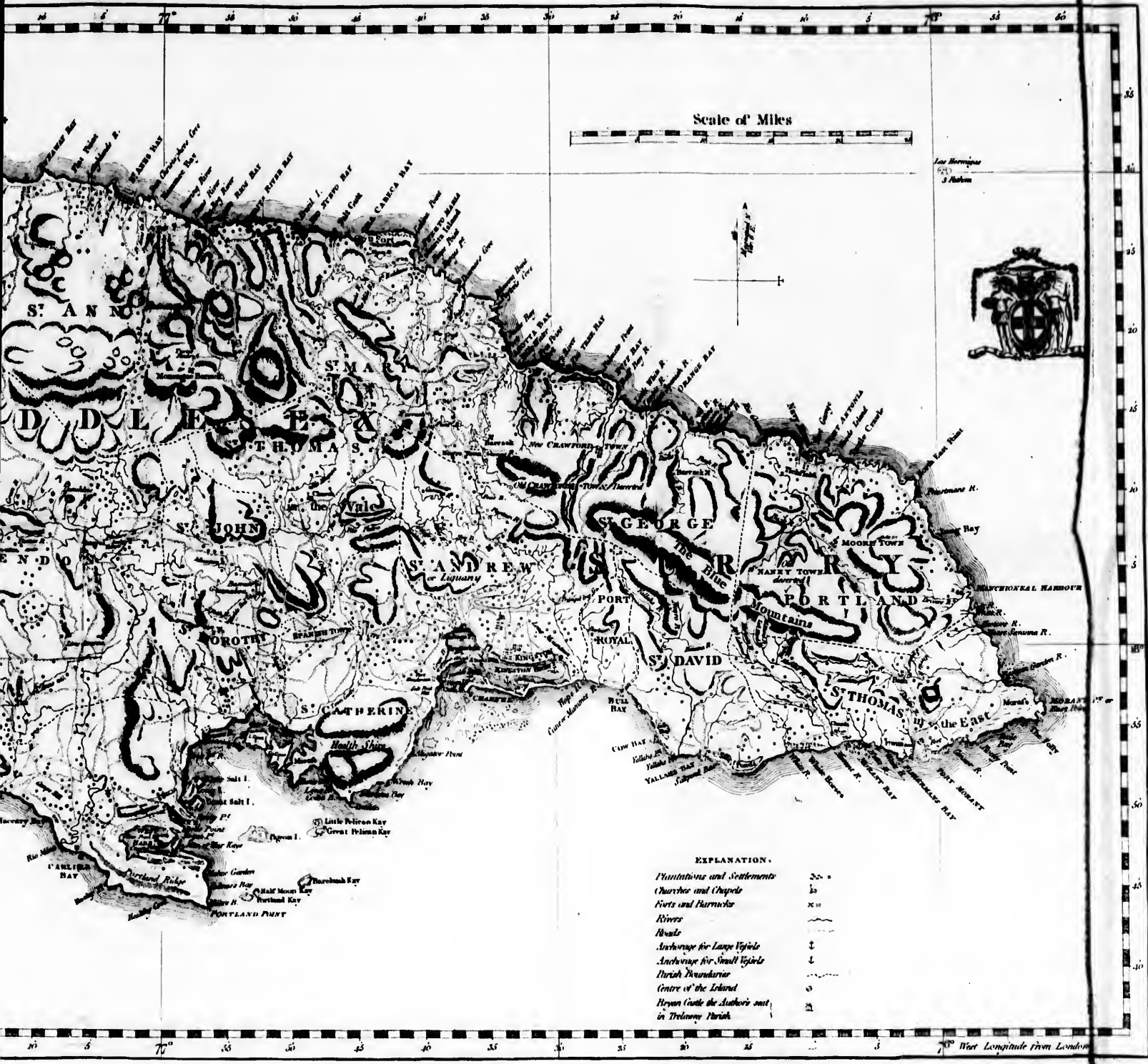
n. 11. 11. 11. 11. 11.



A MAP of
 the ISLAND of
JAMAICA.

Divided into
 COUNTIES and PARISHES.

— for the —
 HISTORY of the BRITISH WEST INDIES
 by Bryan Edwards Esq:
 1791.



Scale of Miles



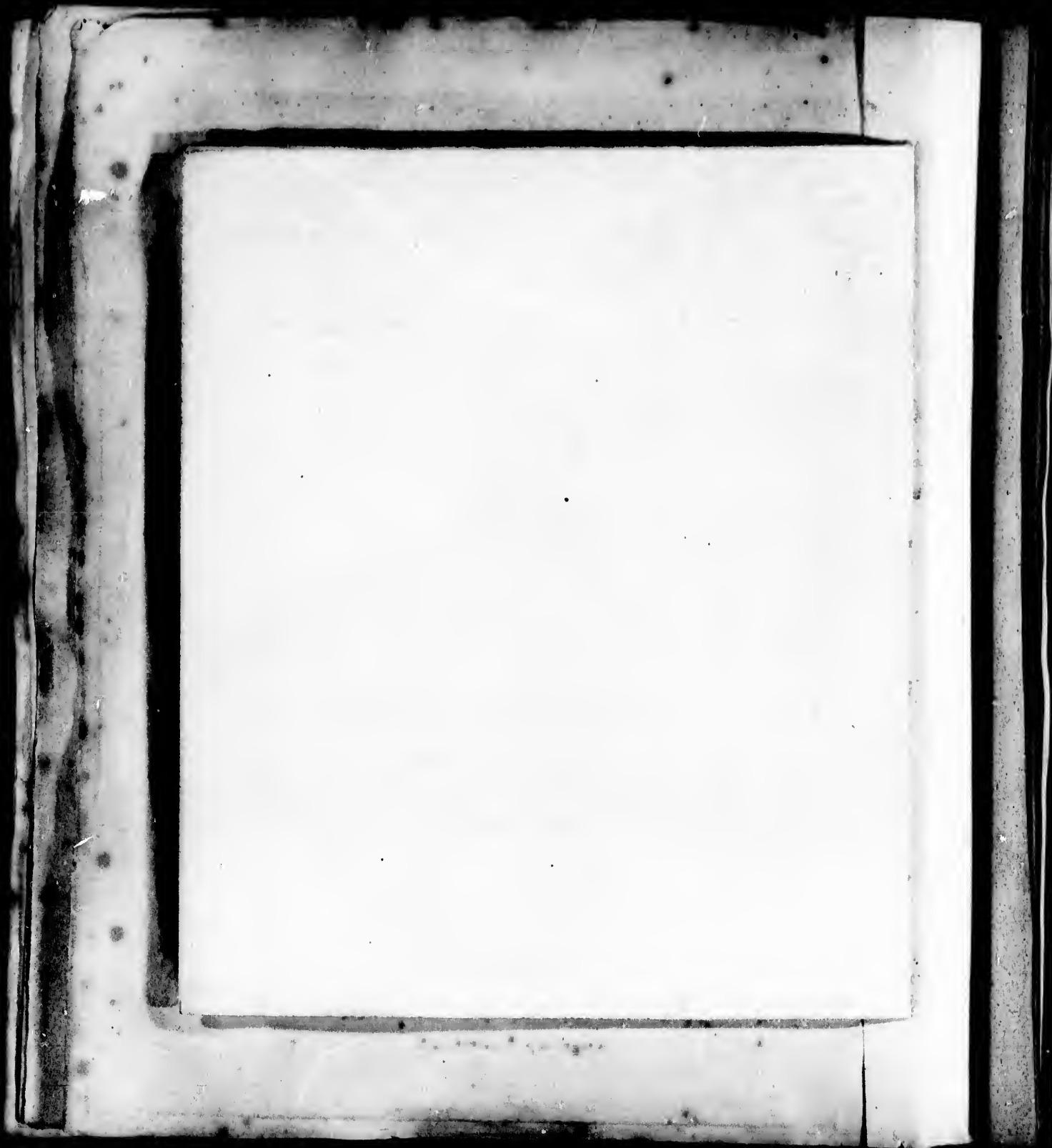
Las Herminas
1793
S. Nelson



EXPLANATION.

- Plantations and Settlements* 200
- Churches and Chapels* 10
- Forts and Batteries* 100
- Rivers* ————
- Roads* ————
- Anchorage for Large Vessels* ⚓
- Anchorage for Small Vessels* ⚓
- Parish Boundaries* - - - - -
- Centre of the Island* ○
- Bryan Castle the Author's seat in Trelawny Parish* ⦿

West Longitude from London



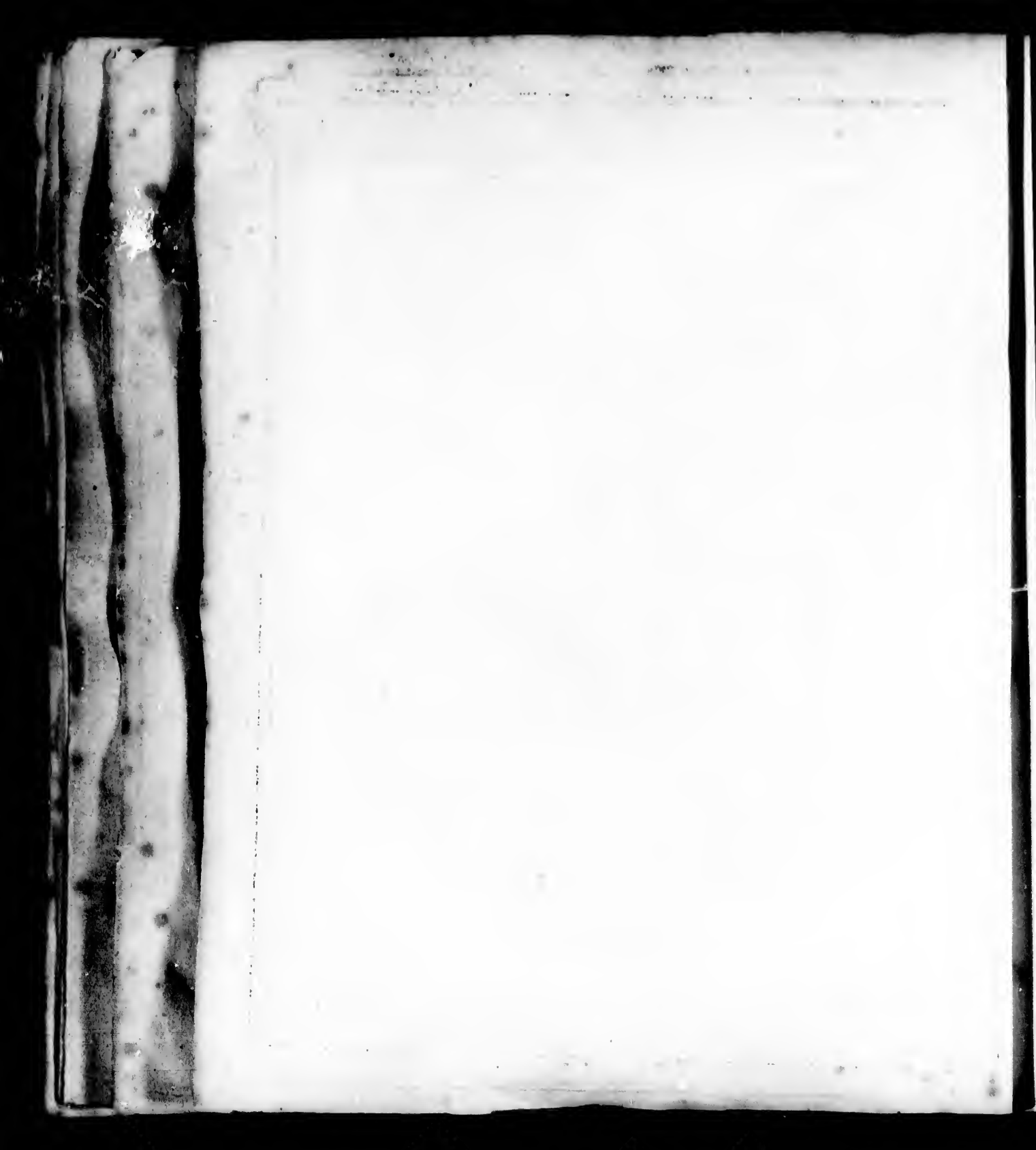
Map
 of the ISLAND of
BARBADOES;
 for the History of the
WEST INDIES.
 by Bryan Edwards Esq.

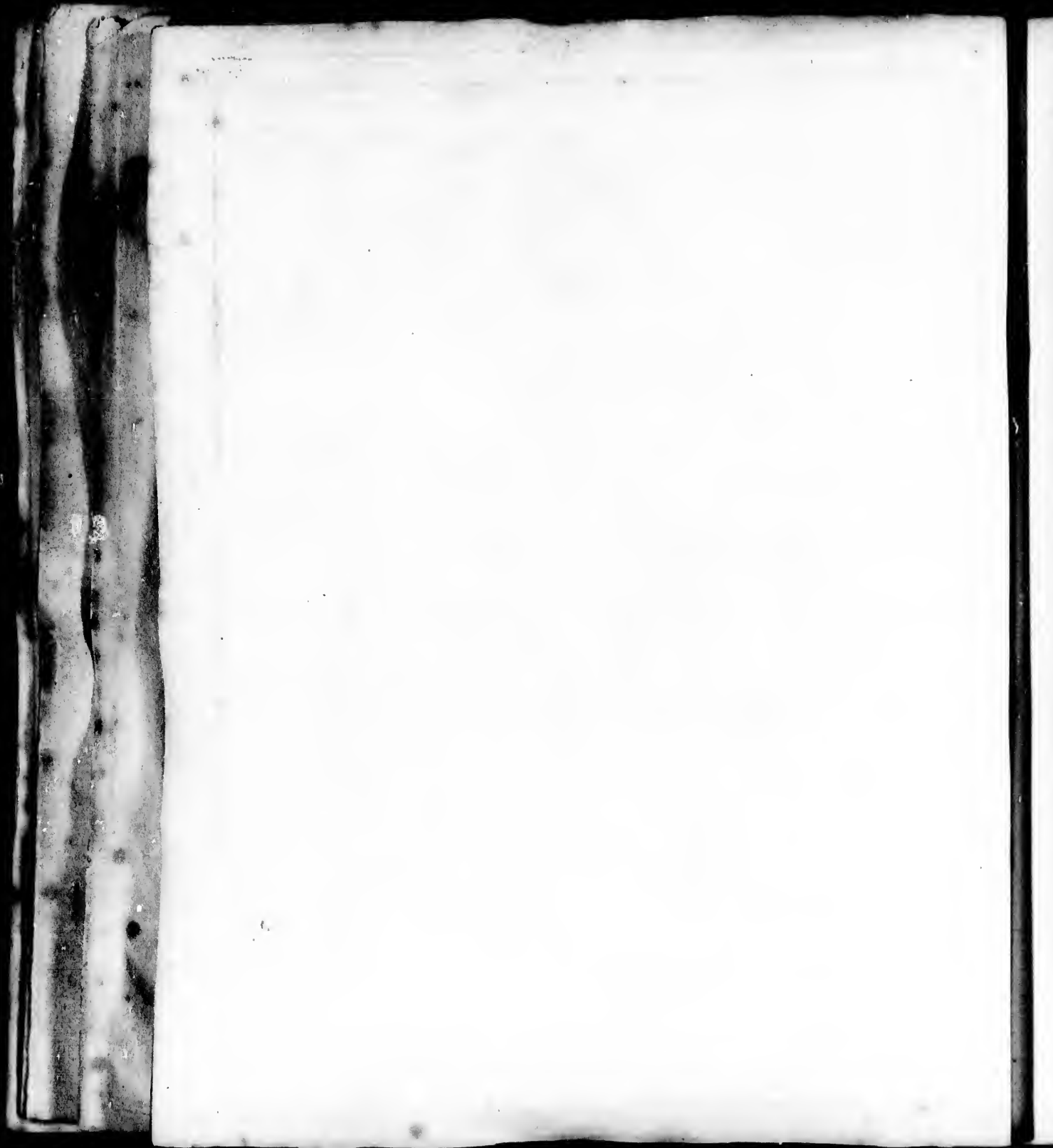


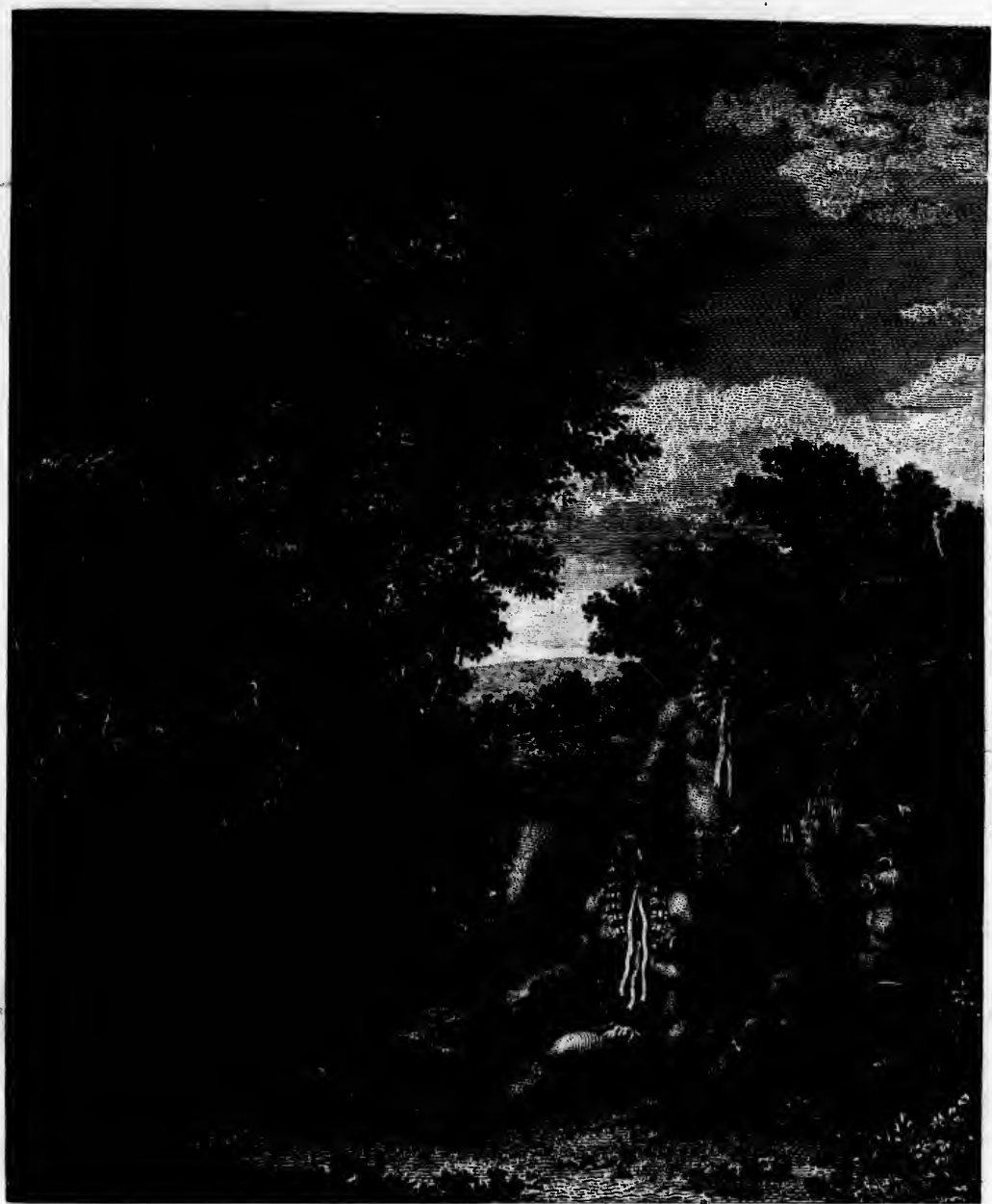
N.B. Plantations or Sugar works of greater note are
 expressed as { Seawall } and
 Plantations or Sugar works of less note are
 expressed as { Charmock }.

Longitude West from London.

J. Allen sculp.







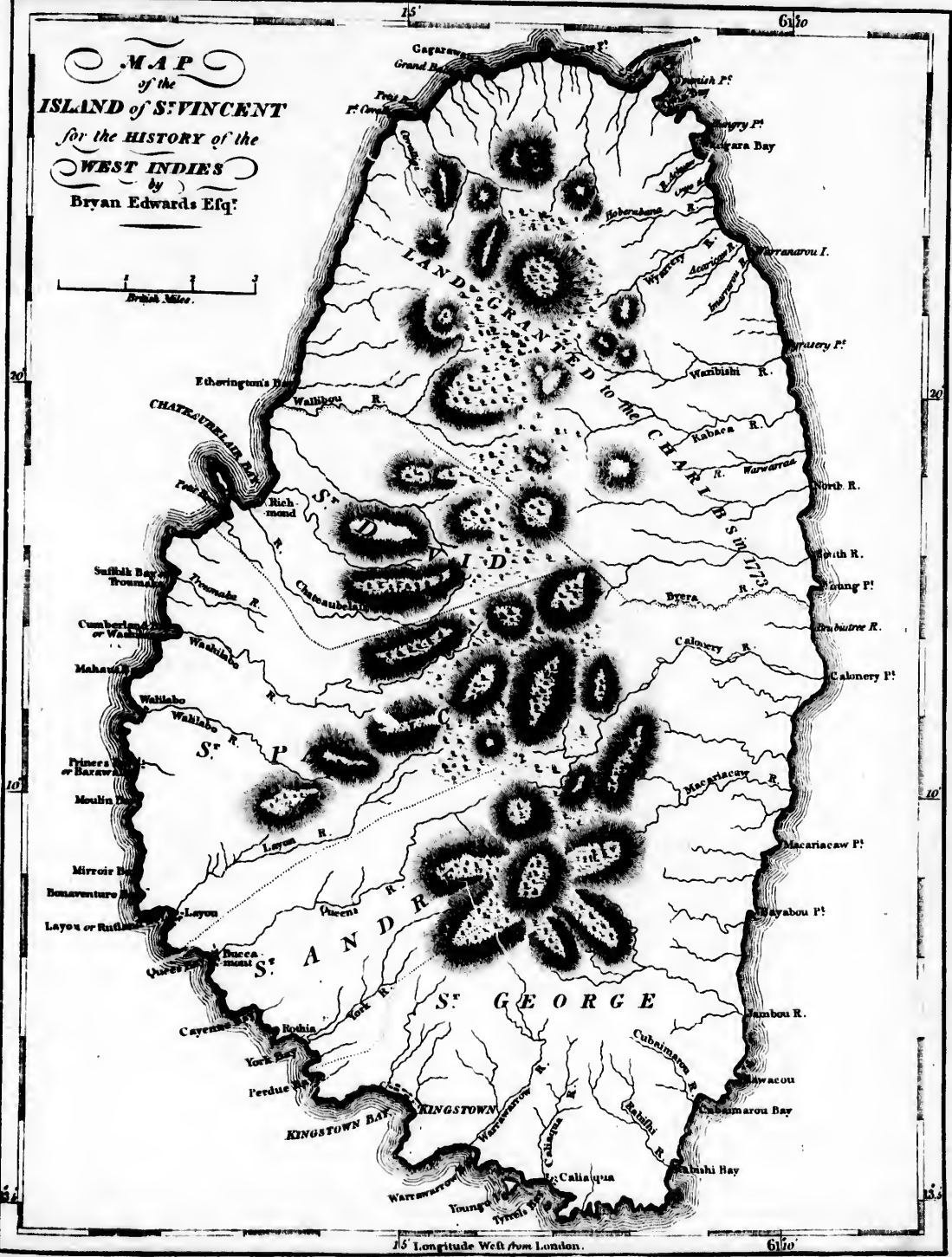
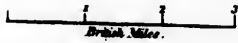
J. Milton sculp.

A FAMILY of CHARAIBES, drawn from the Life, in the ISLAND of ST VINCENT.

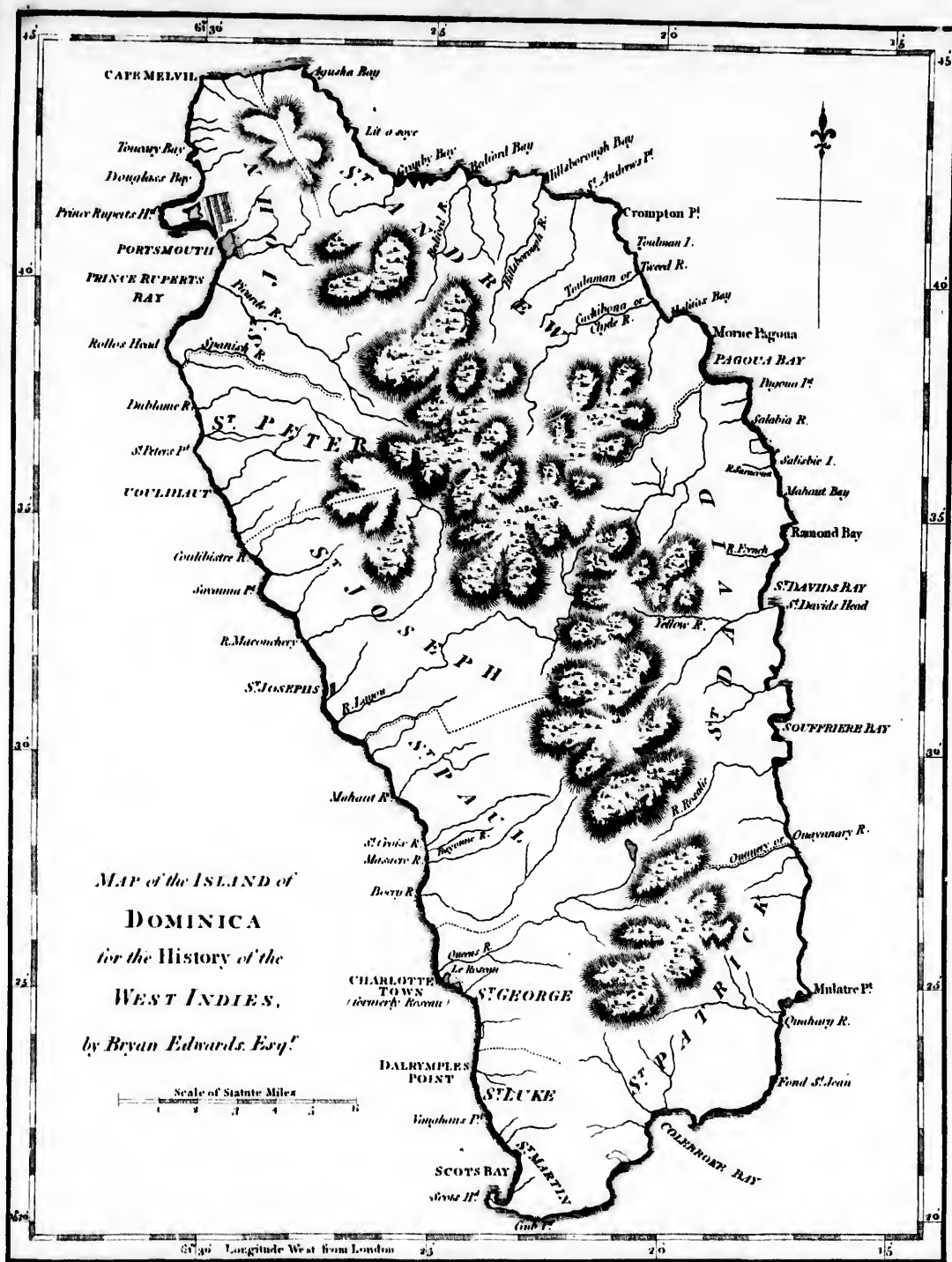
From an Original Painting by Agostino Brunyas, in the possession of Sir William Young Barr. F. R. S.



M A P
of the
ISLAND of S^t VINCENT
for the HISTORY of the
WEST INDIES
by
Bryan Edwards Esq^r







*MAP of the ISLAND of
DOMINICA
for the History of the
WEST INDIES,*

by Bryan Edwards, Esq.

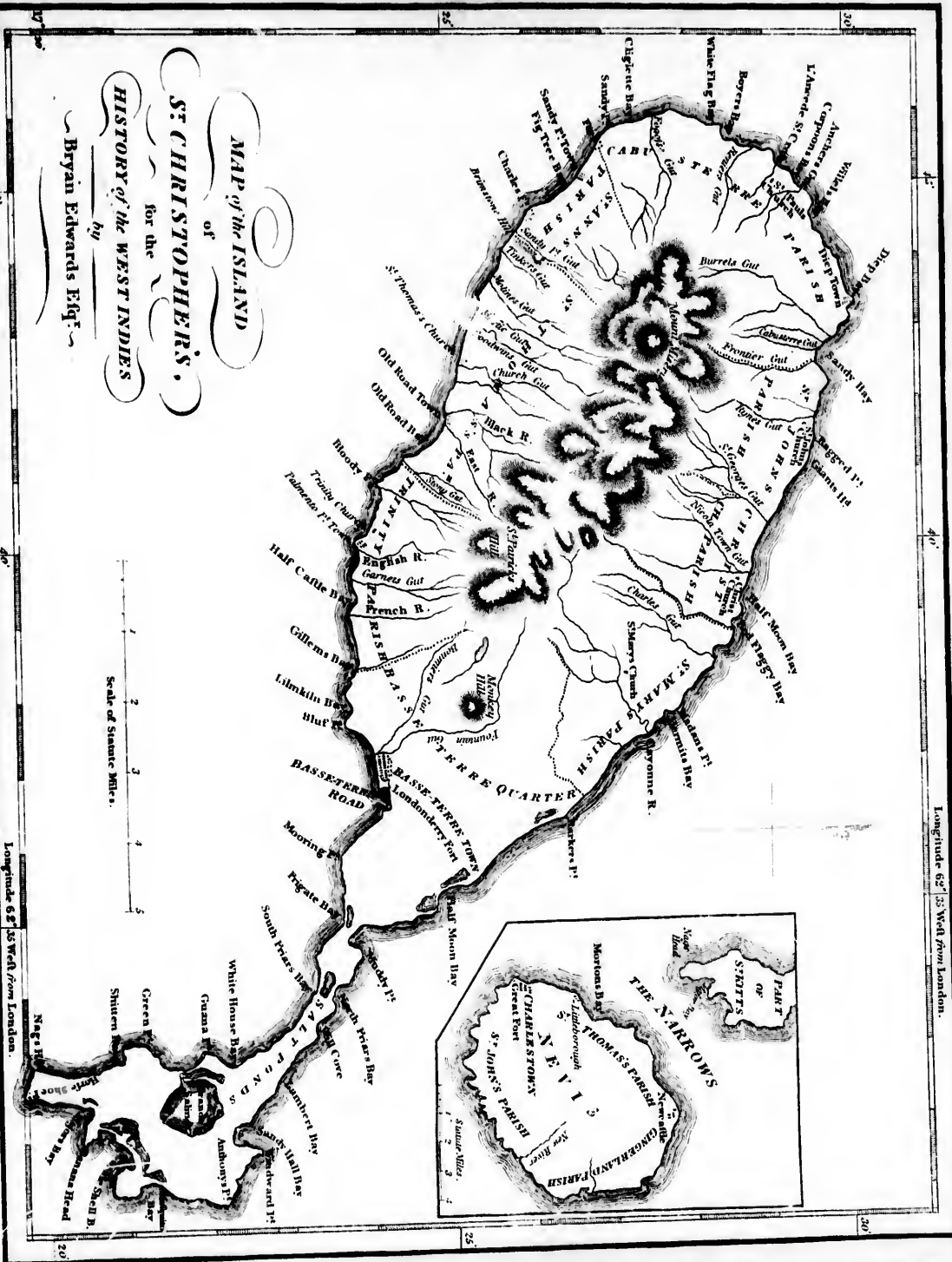


60 30 Longitude West from London

J. Ondaatje, Mill Hill.

Longitude 65° 35' West from London.

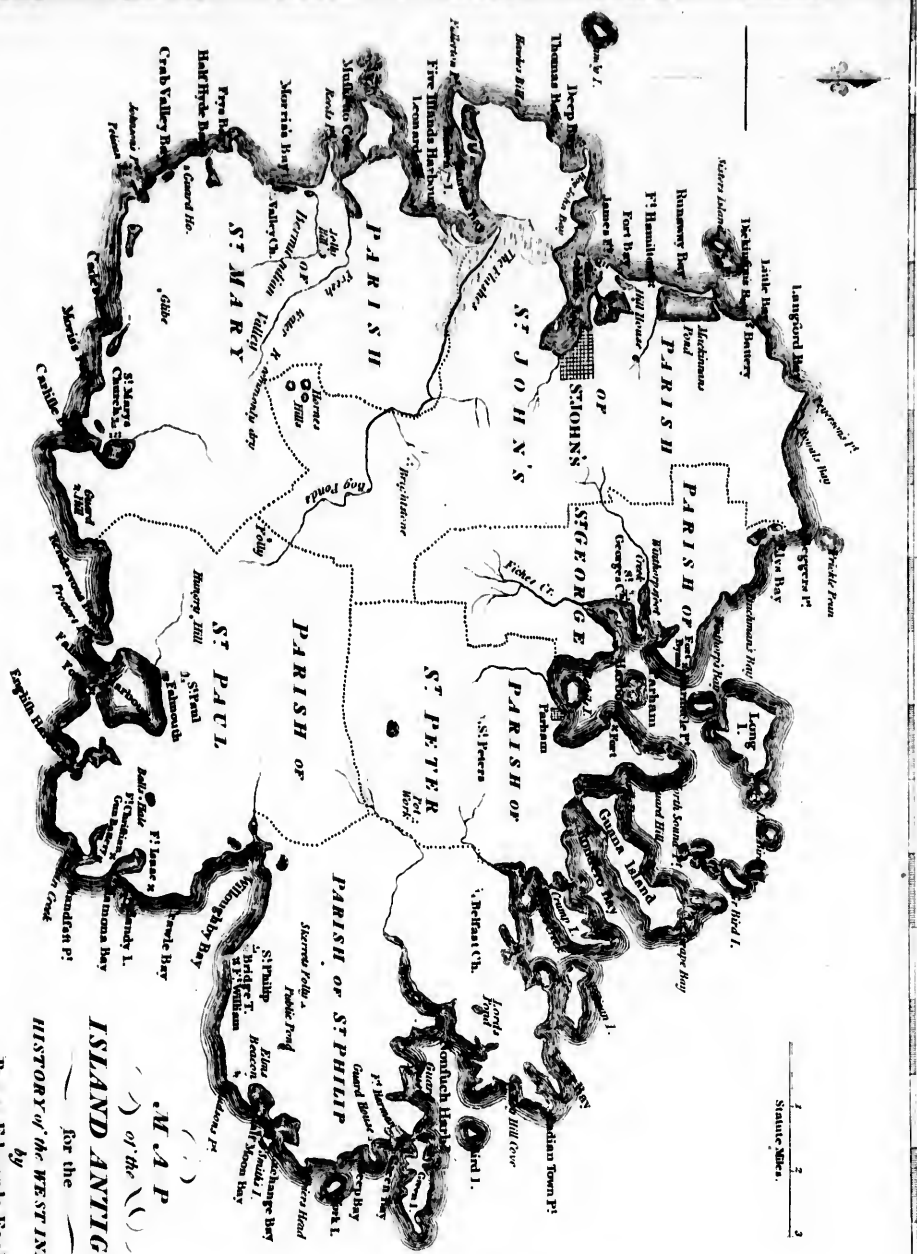
MAP of the ISLAND
of
ST CHRISTOPHER'S,
for the
HISTORY of the WEST INDIES
by
 Bryan Edwards Esq.



Longitude 62° 35' West from London.

Longitude 62° 35' West from London.





M.A.P.
of the
ISLAND ANTIGUA
for the
HISTORY of the WEST INDIES
By Bryan Edwards Esq.

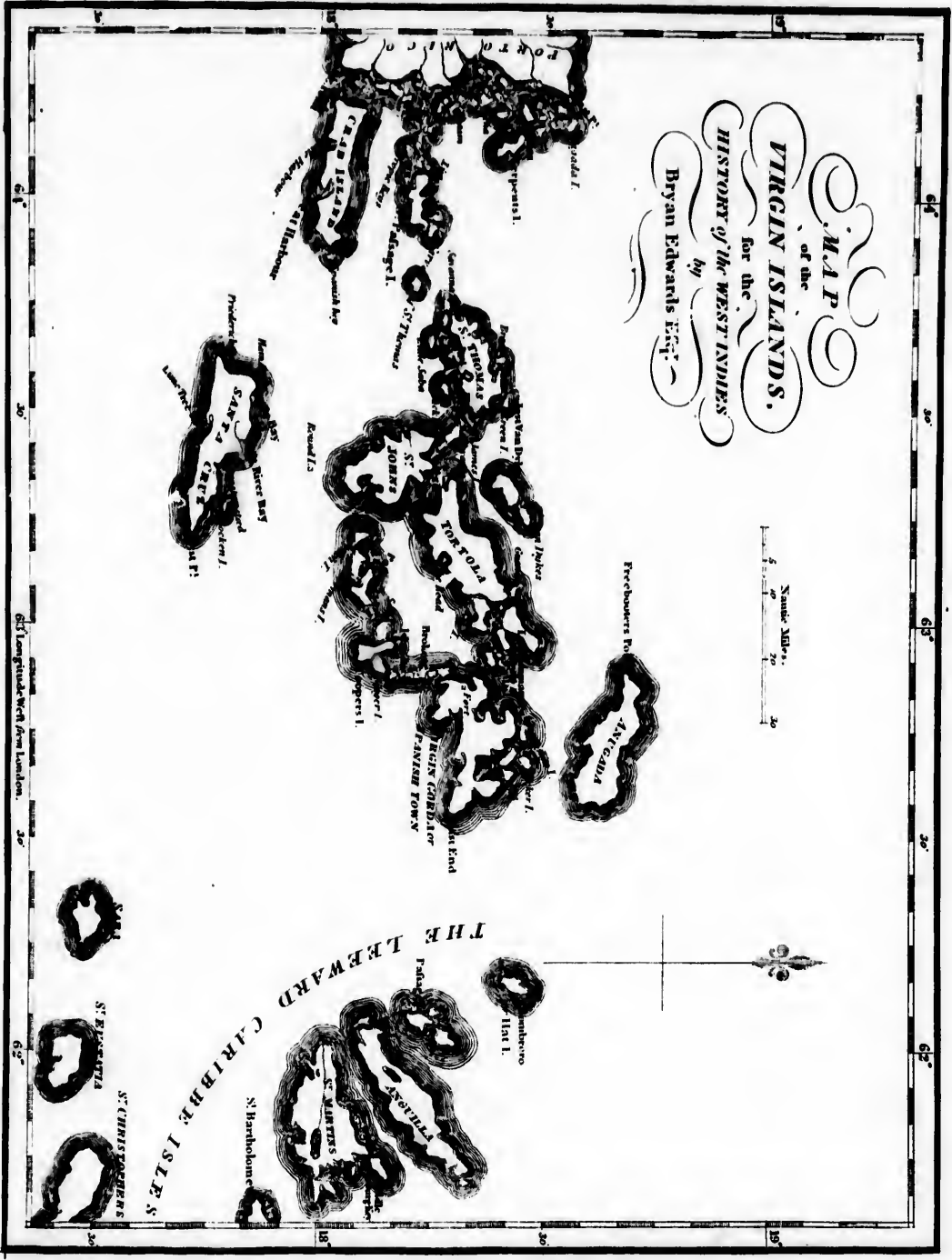
35° 30' Longitude West from London.

35° 30' Longitude West from London.



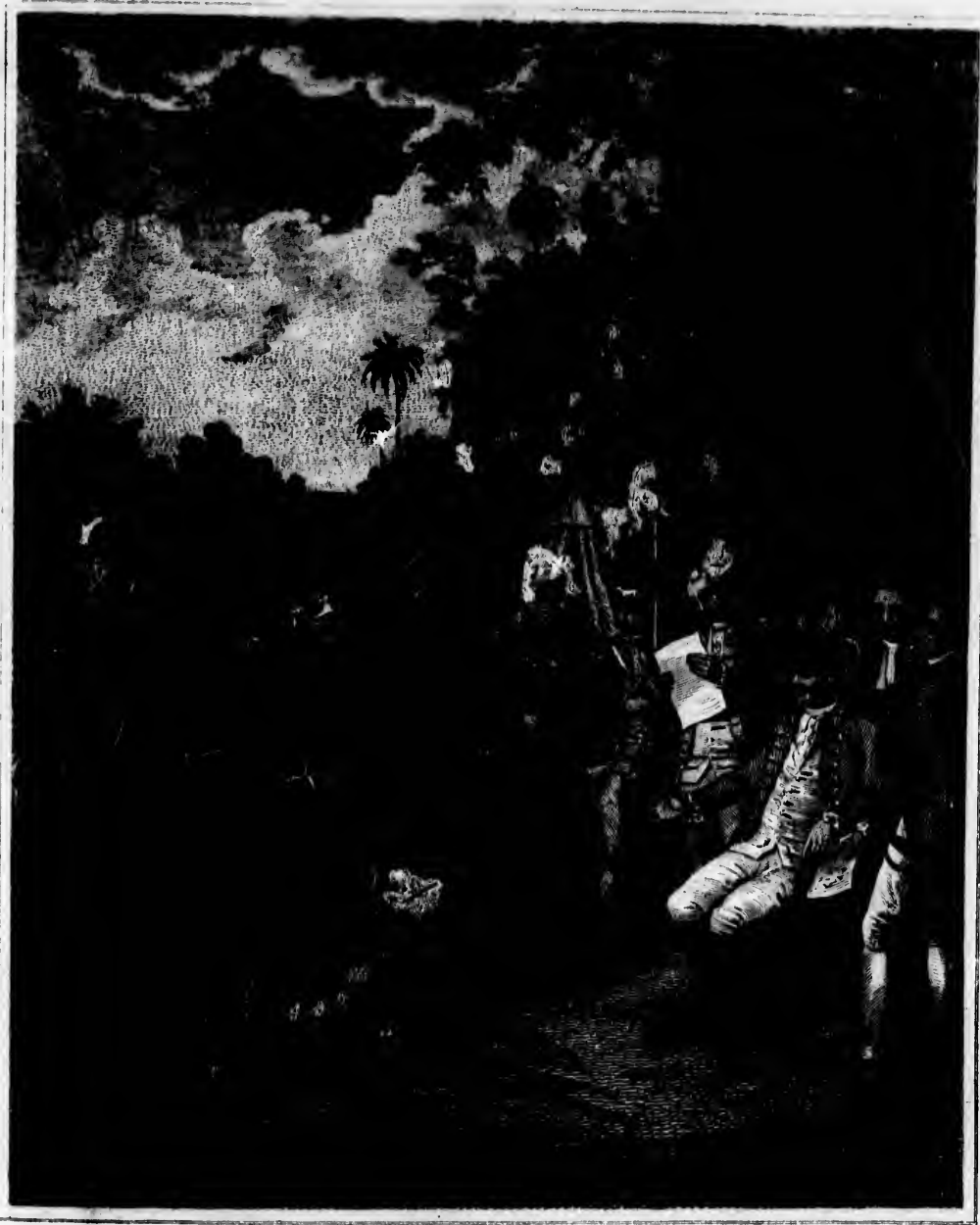
MAP
of the
VIRGIN ISLANDS.
for the
HISTORY of the WEST INDIES
by
Bryan Edwards Esq;

Scale of Miles
0 5 10 20



Drawn by J. G. ...
Engraved by W. ...





Shot well?

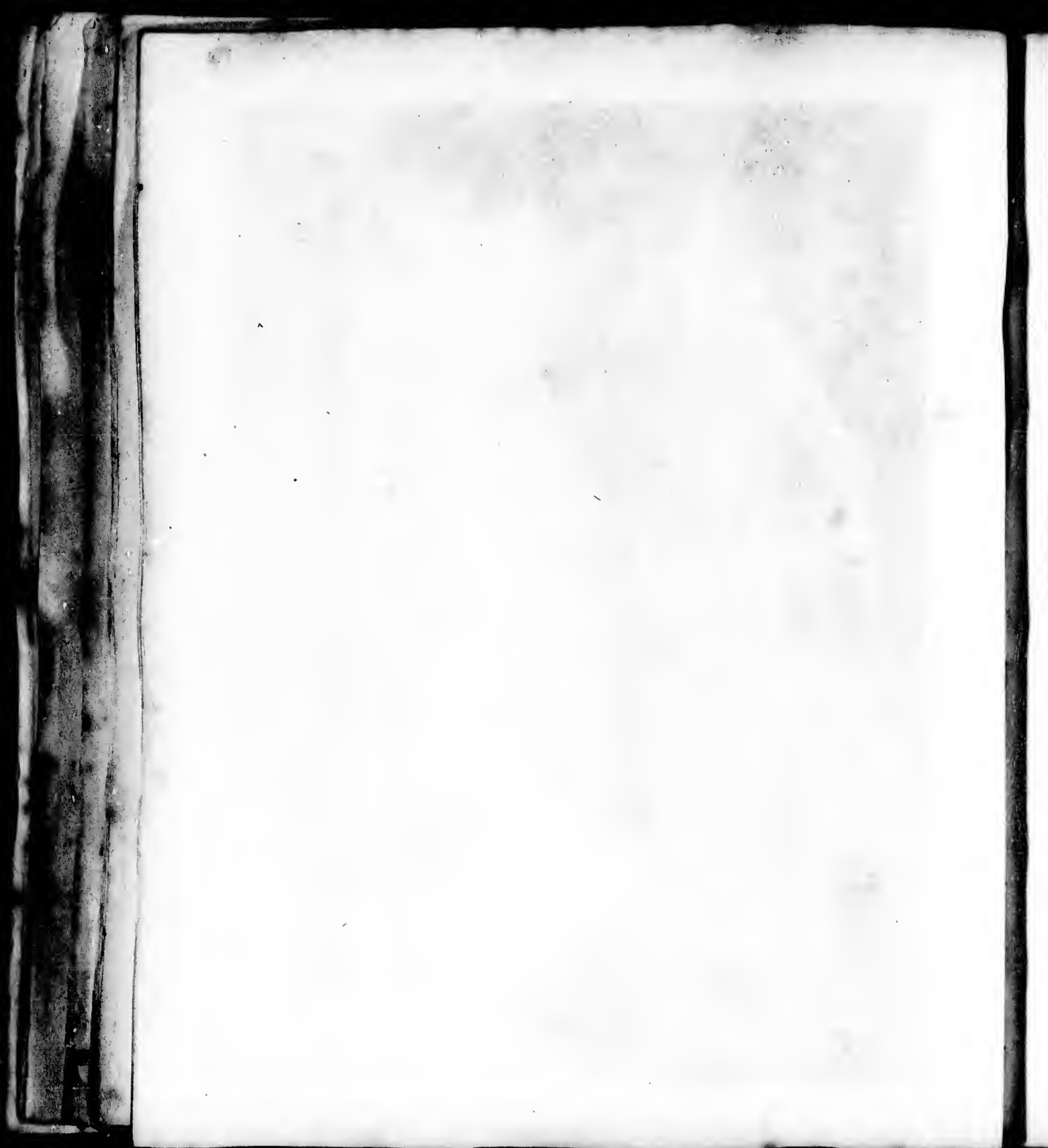
PACIFICATION *with the* MAROON NEGROES .

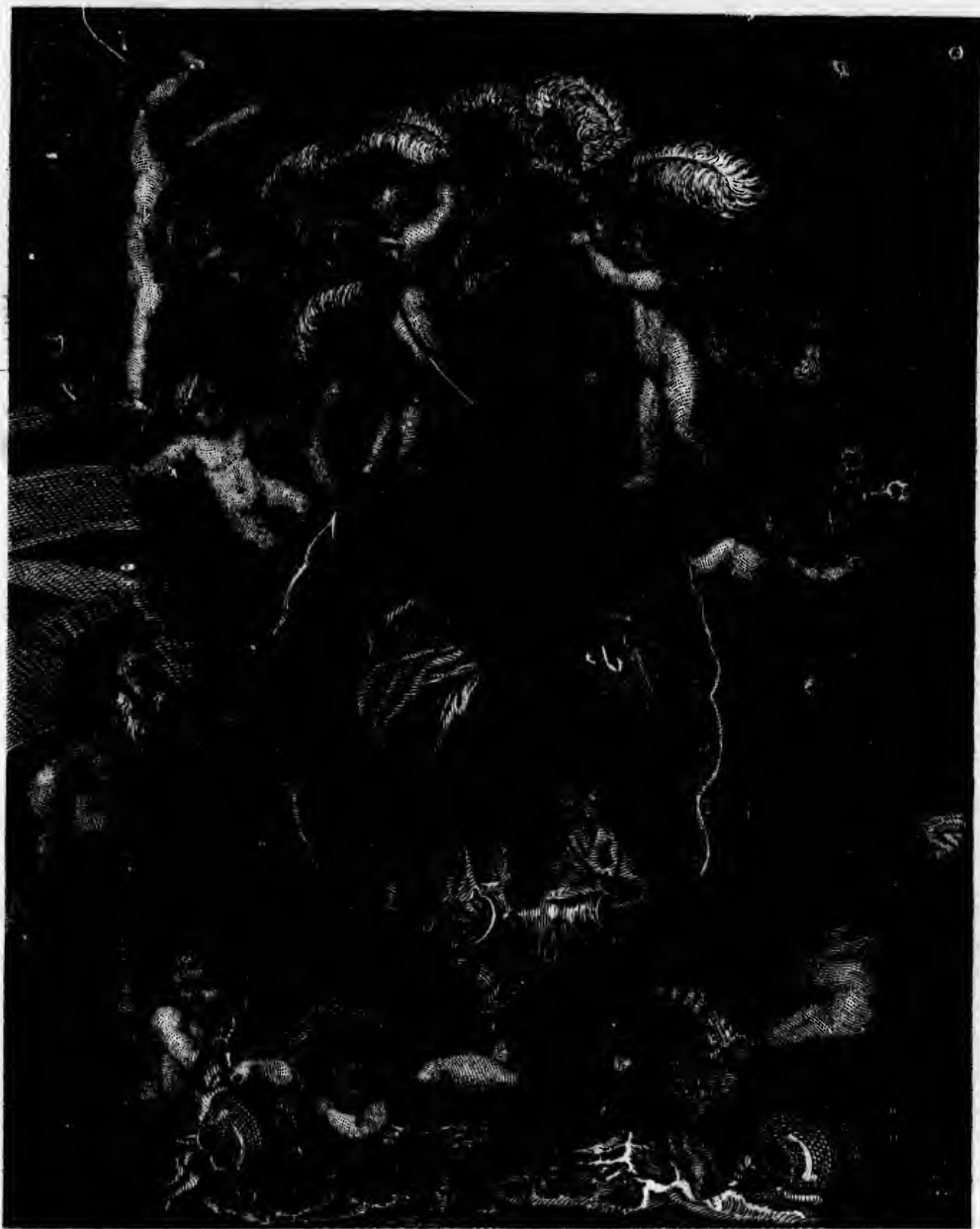
Drawn from the life by Agostino Bruyas . From an original painting in the possession of Sir W. Young Bart. F.R.S



TRELAWNEY TOWN, *the* CHIEF RESIDENCE *of the* MAROONS.



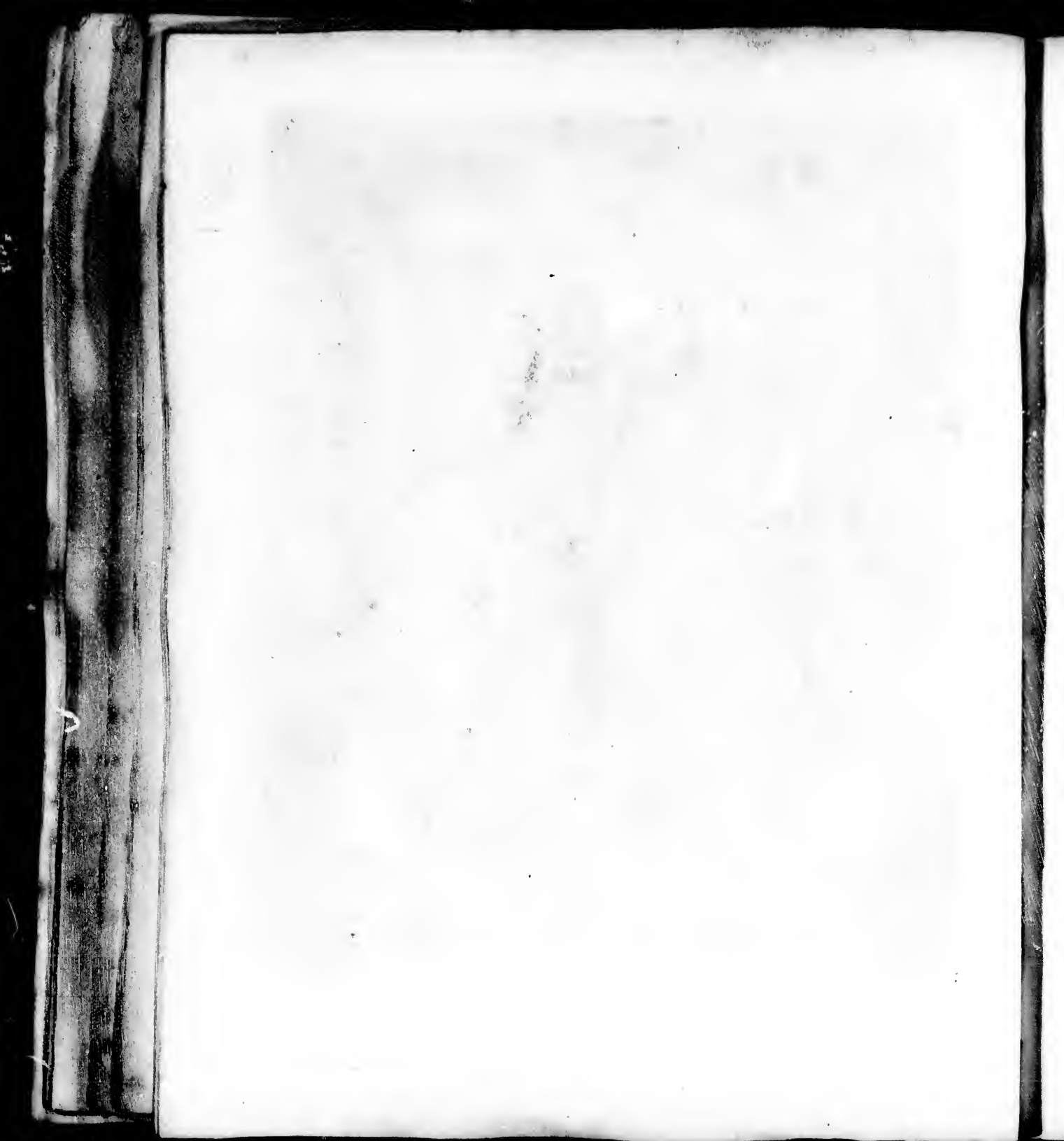




F. Leithard pinxt.

W. Dringier sculpt.

The VOYAGE of the SABLE VENUS, from ANGOLA to the WEST INDIES.

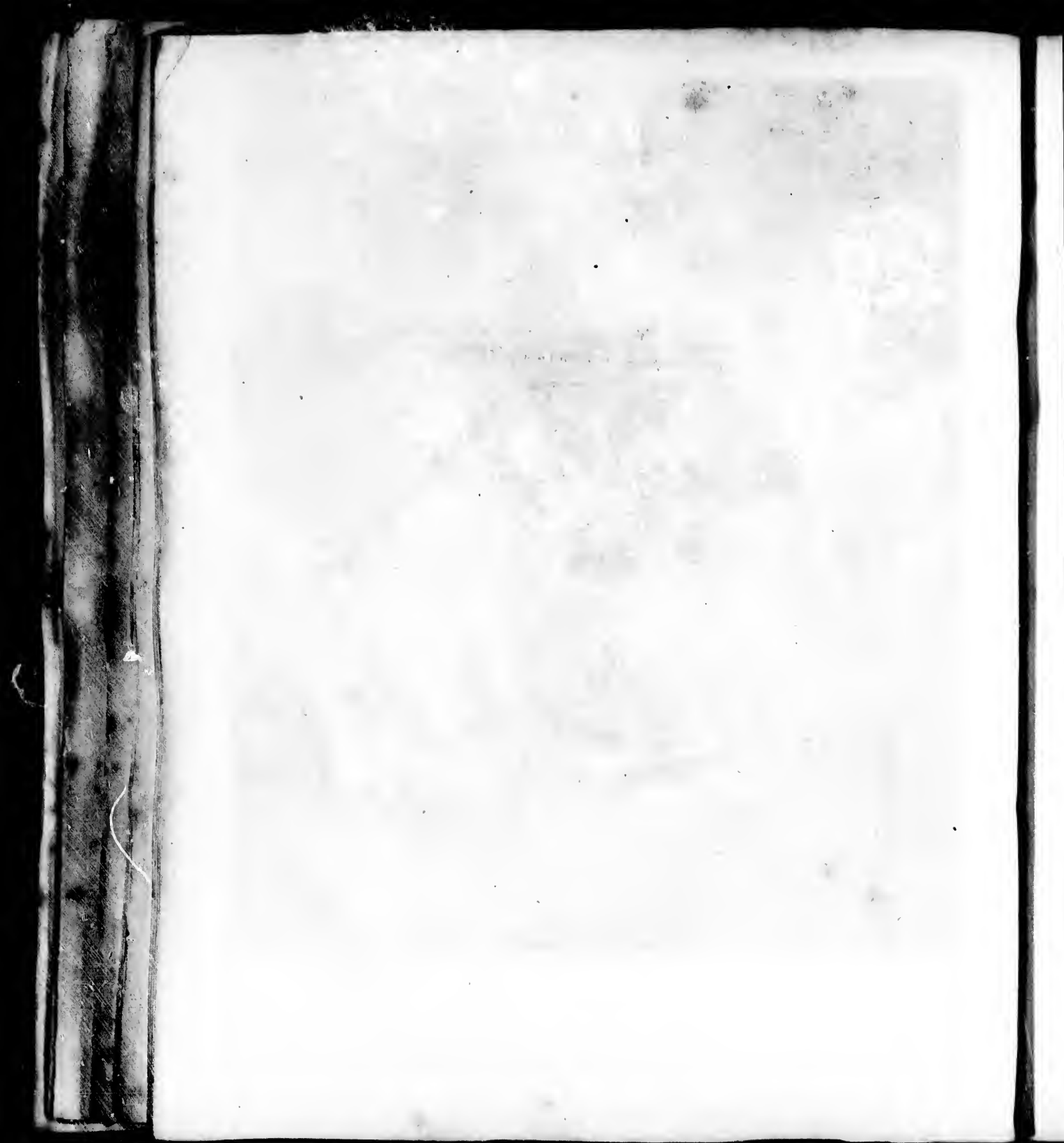




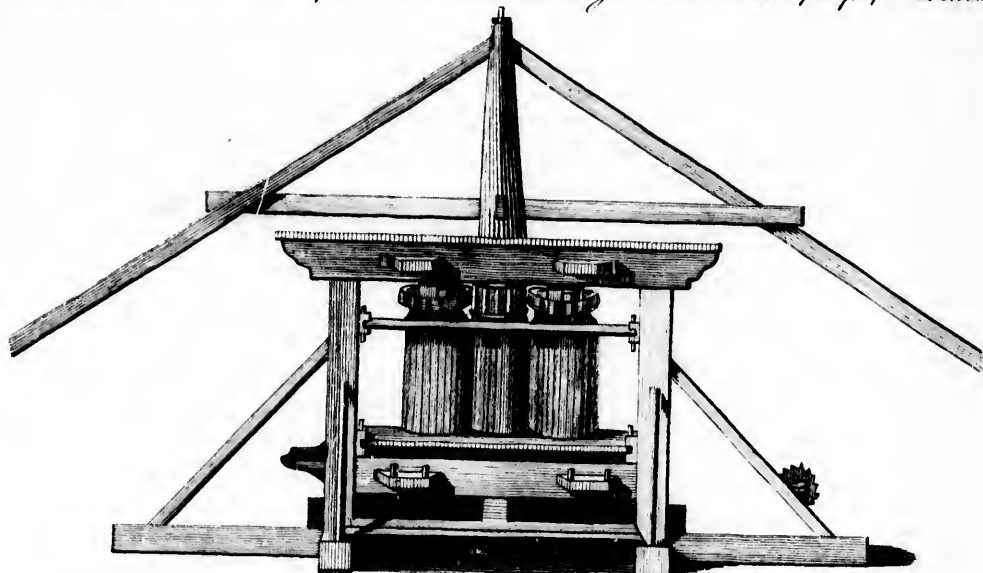
Indiant sculpt.

A NEGRO FESTIVAL drawn from Nature in the ISLAND of S^T VINCENT.

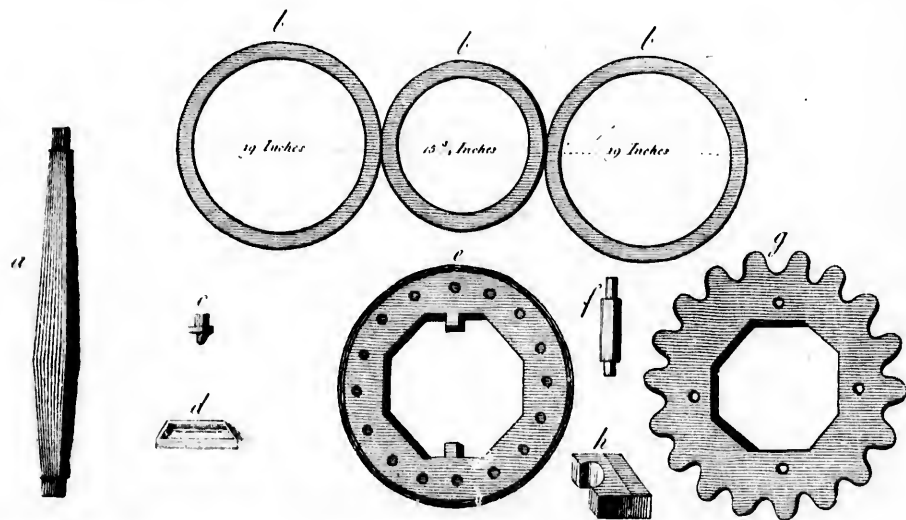
From an Original Picture by Agostino Brongnas, in the possession of Sir William Young Bart. F.R.S.



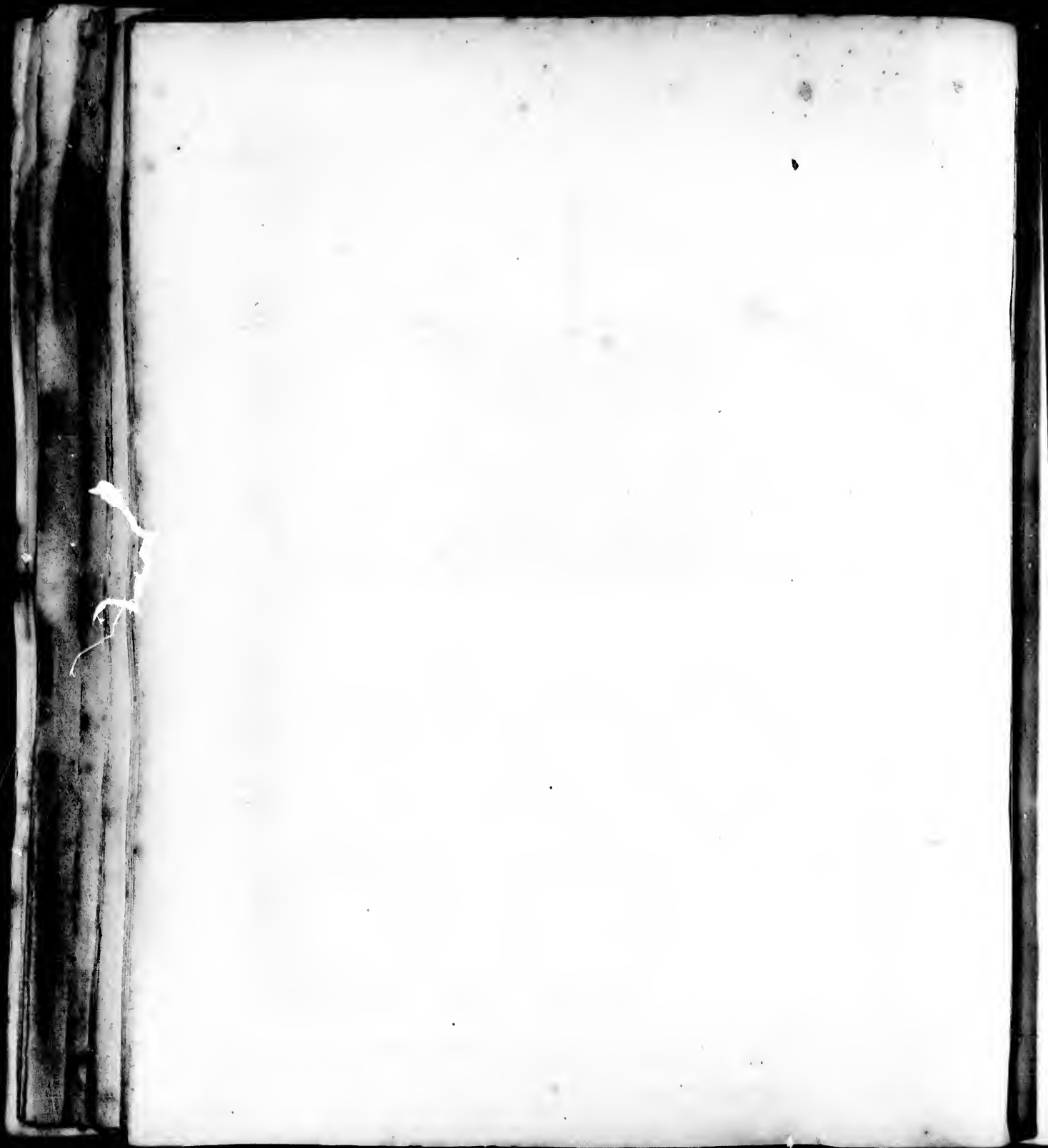
Elevation & Plan of an improved SUGAR MILL, by Edward Woolley Esq. of Jamaica.



1. Recrod pulp



a. the side roller gudgeon. b. the rollers or cylinders. c. pivot to each roller called the capcase. d. the stop on which the capcase turns. e. the lantern wheel. f. the trundle or wallower of which there are sixteen in the lantern wheel. g. cog or spur wheel. to each of the side rollers. h. the side brags to the rollers.



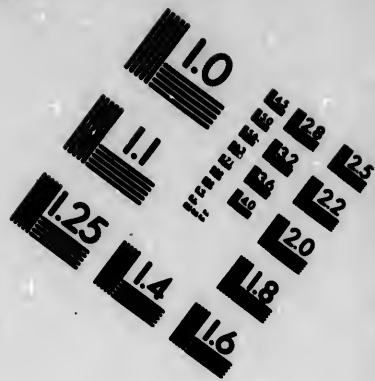


Grignon. sup.

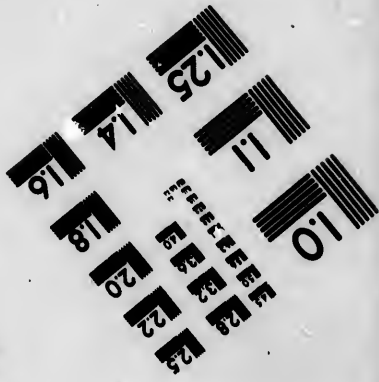
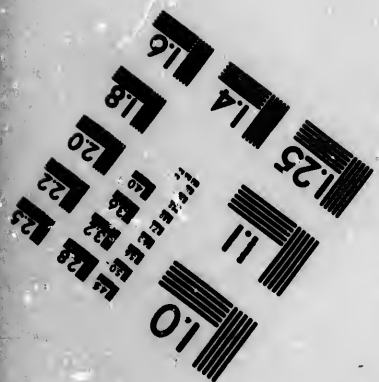
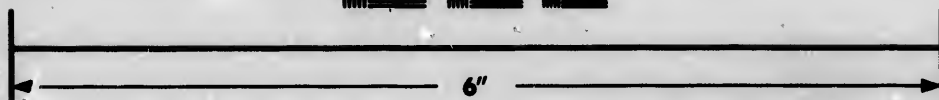
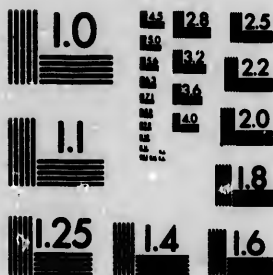
L. TOYER the CHIEF of the BLACK CHARAIBES in S^t VINCENT with his five WIVES.

Painted from the life by Agostino Brunias - 1773. From an original painting in the possession of Sir W^m Young Bart. F.R.S.





**IMAGE EVALUATION
TEST TARGET (MT-3)**



**Photographic
Sciences
Corporation**

23 WEST MAIN STREET
WEBSTER, N.Y. 14580
(716) 872-4503

0
E E E E E 123 125
E E E E 122
E 120
E 118

110
E E E E
E E E E

30°

75°

30'

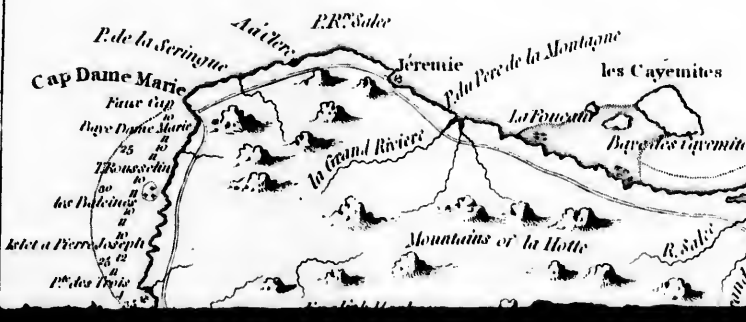
74°

30'

A MAP OF THE IS



GULF OF GONAVES



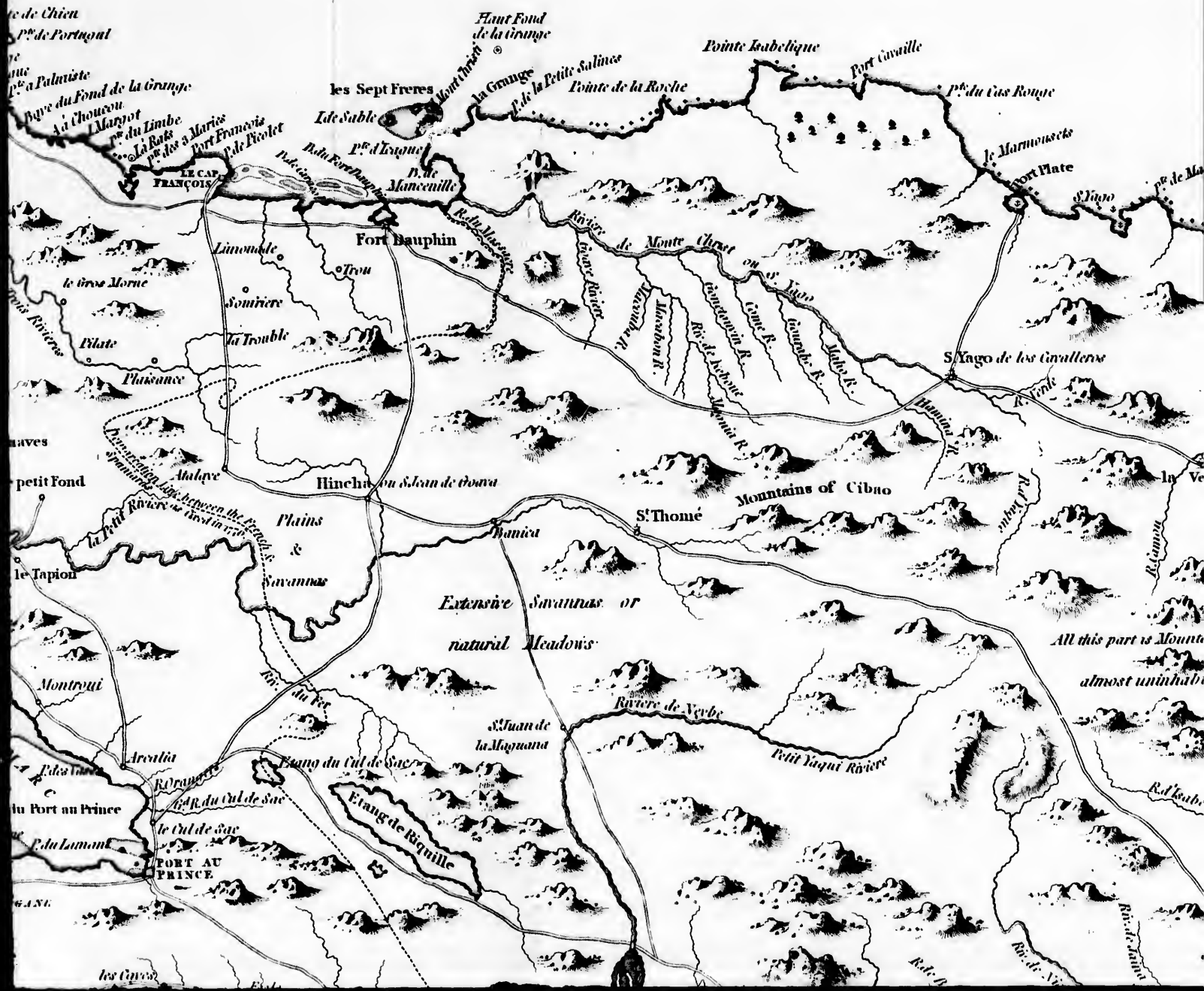
73°

30'

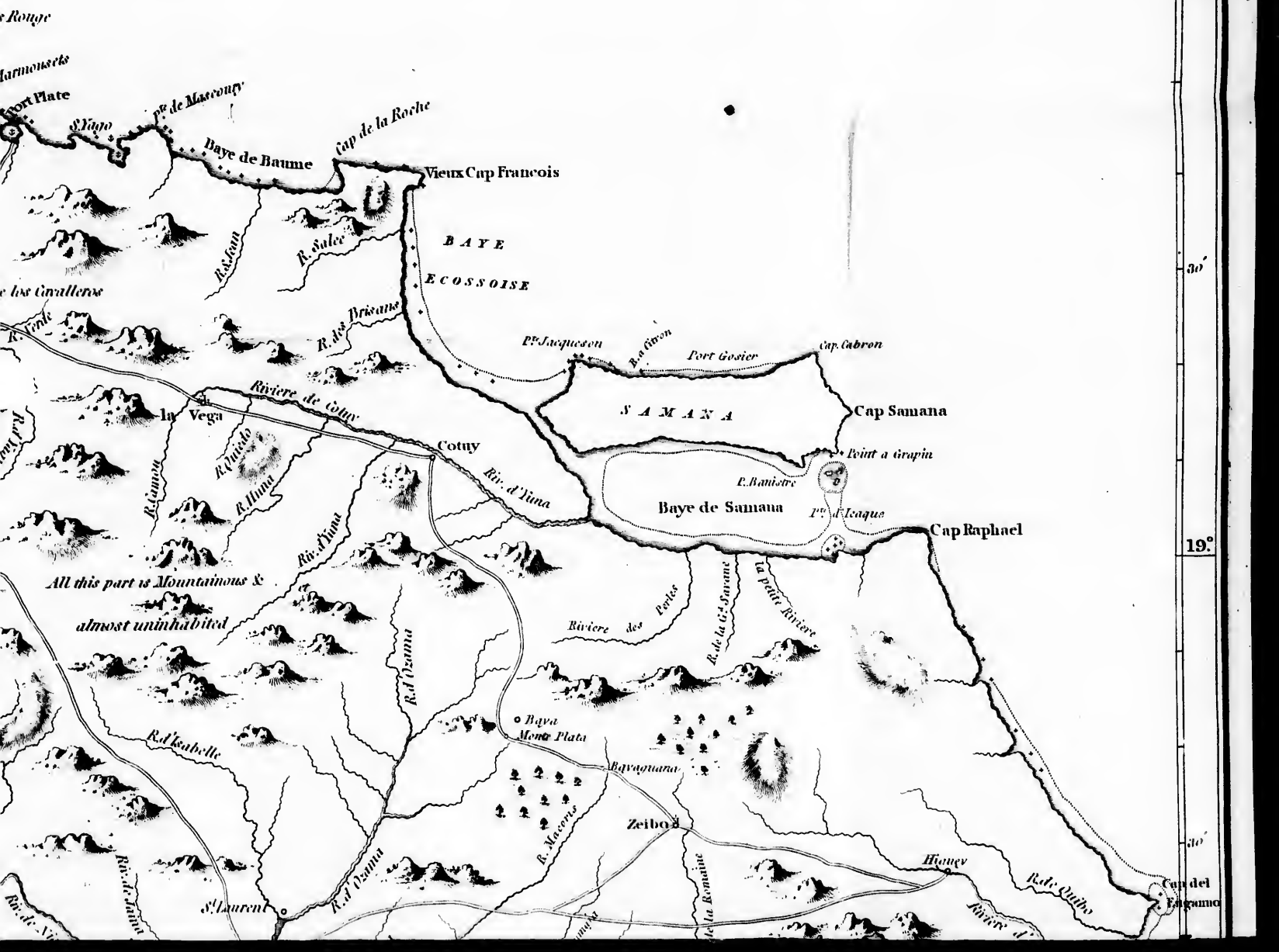
72°

30'

ISLAND OF S^T. DOMINGO.



71° 30' 70° 30'



30° 20° 19° 30°

Caye d'Argent

Fort Rouge

Fort Plate

les Cavaliers

Pointe de la Vega

All this part is Mountainous & almost uninhabited

R. d'Isabelle

S. Laurent

Cap de la Roche

Vieux Cap Francois

BAYE ECOSSEOISE

Cottuy

R. d'Osama

Baye Monte Plata

Zeibon

R. Moscorus

R. de la Romana

R. de la Roche

R. de Bricana

Riviere de Cottuy

R. d'Osama

R. d'Osama

Riv. d'Osama

Riv. d'Osama

Riv. d'Osama

Riviere des Portes

Baye de Samana

Baye de Samana

R. de la G. Supreme

la petite Riviere

Ravaguana

Zeibon

R. de la Romana

Point a Girpin

E. Banistre

P. d'Isaque

Cap Raphael

P. Jacqueson

P. Simon

Port Gosier

Cap. Cabron

Cap Samana

Cap Raphael

Cap del Engano

GULF OF GONAVES

19°

30'

18°

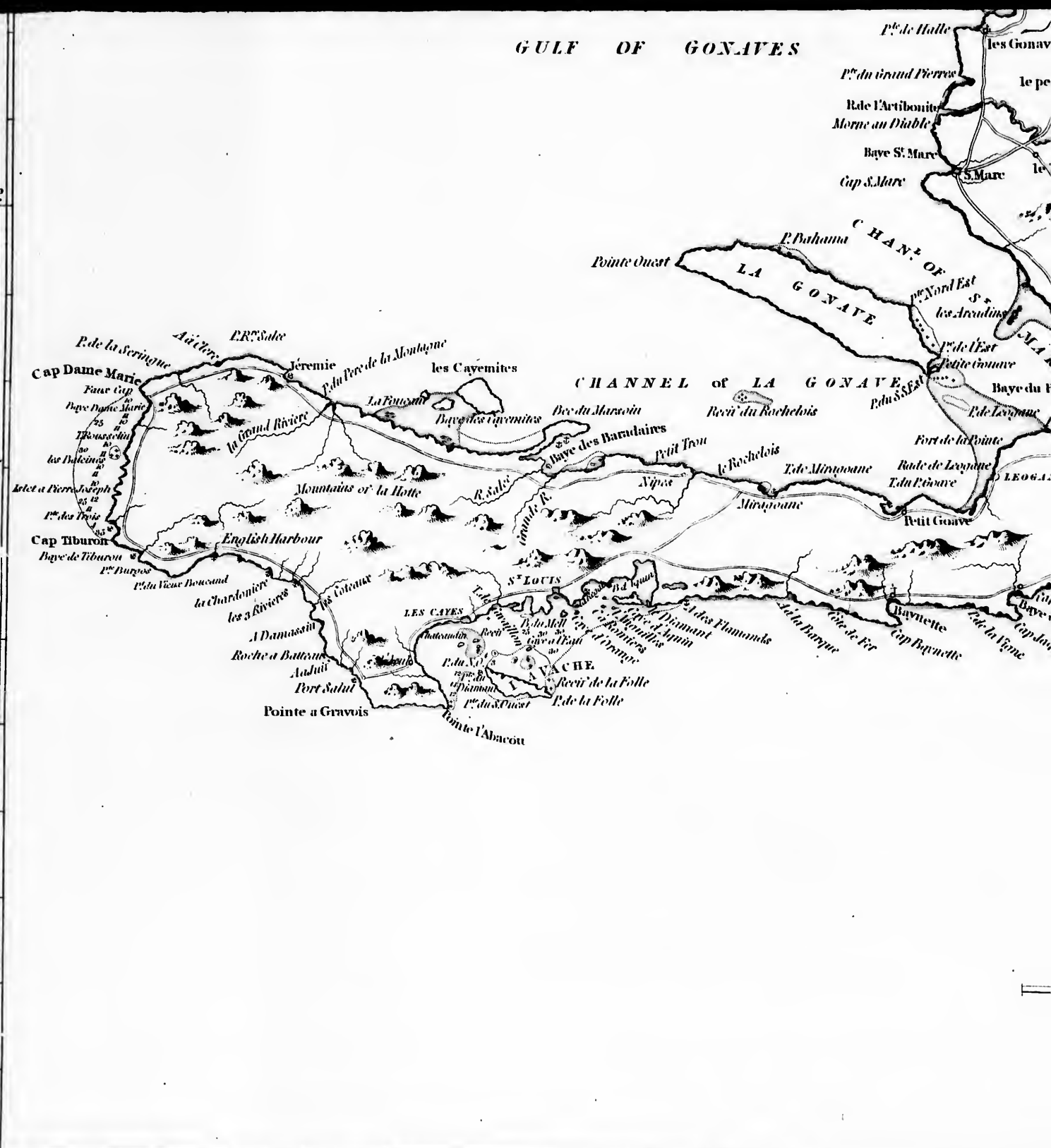
30'

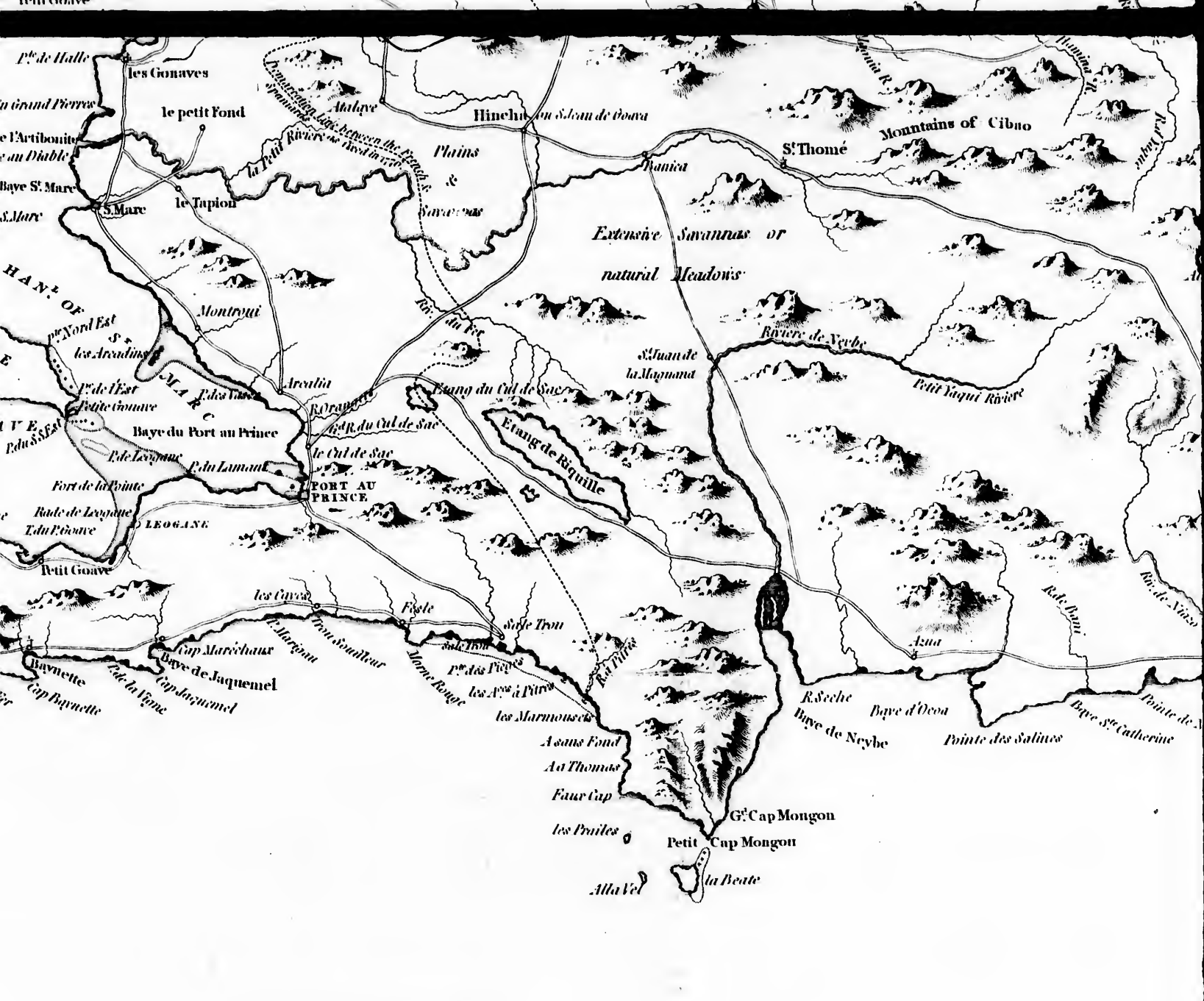
75°

30'

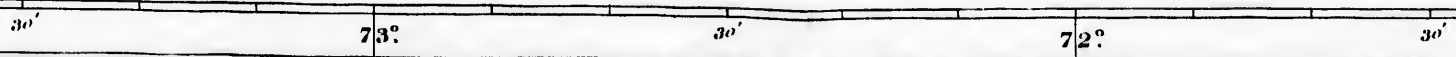
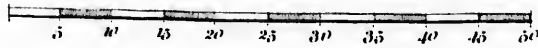
74°

30'



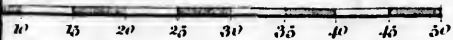


Scale of 50 British Statute Miles.





Scale of 50 British Statute Miles.

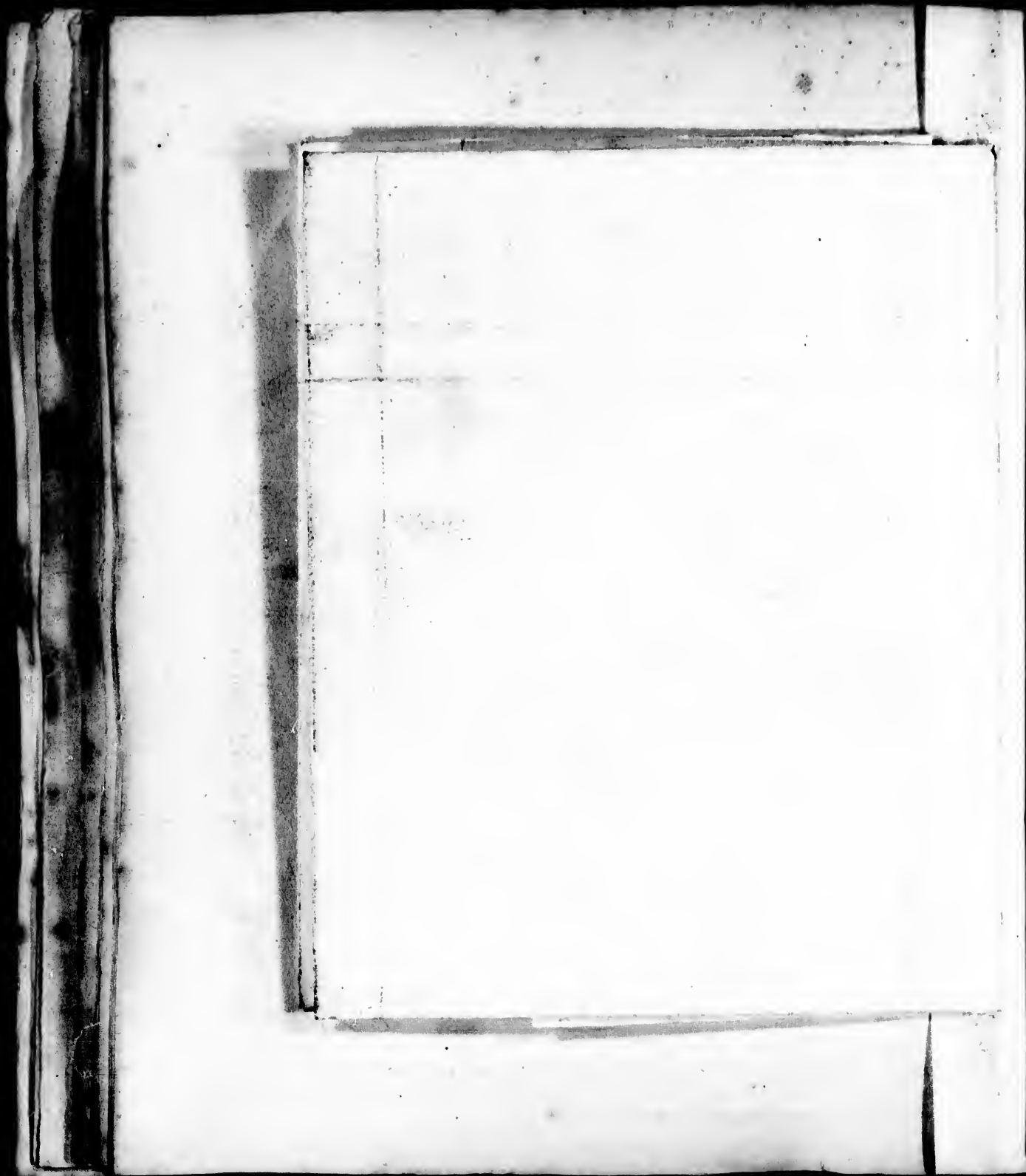


73°

30'

72°

30'





griffins map?

CHATOYER the CHIEF of the BLACK CHARAIBES in S. VINCENT with his five WIVES.

Drawn from the life by Agostino Brunias - 1773. From an original painting in the possession of Sir W. Young Bart. F.R.S.



60° 35'

30'

35'

30'

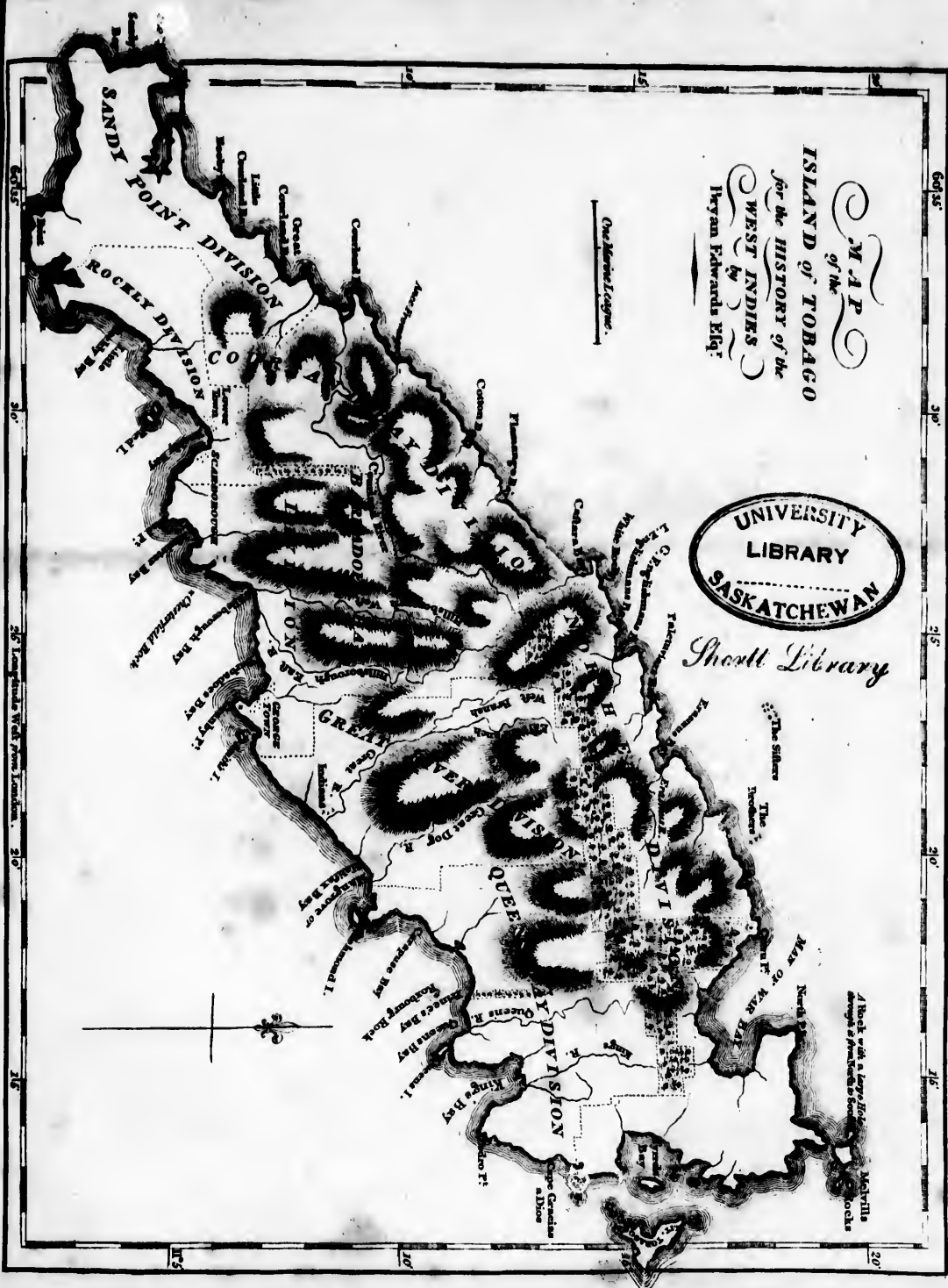
35'

30'

MAP
 of the
ISLAND of TOBAGO
 for the HISTORY of the
WEST INDIES
 by
 Bryan Edwards Esq;

UNIVERSITY
 LIBRARY
 SASKATCHEWAN

Shoell Library



*A Sheet with a large Scale
 copied from the original
 by Mr. J. M. Smith*

60° 35'

30'

35'

30'

35'

30'

