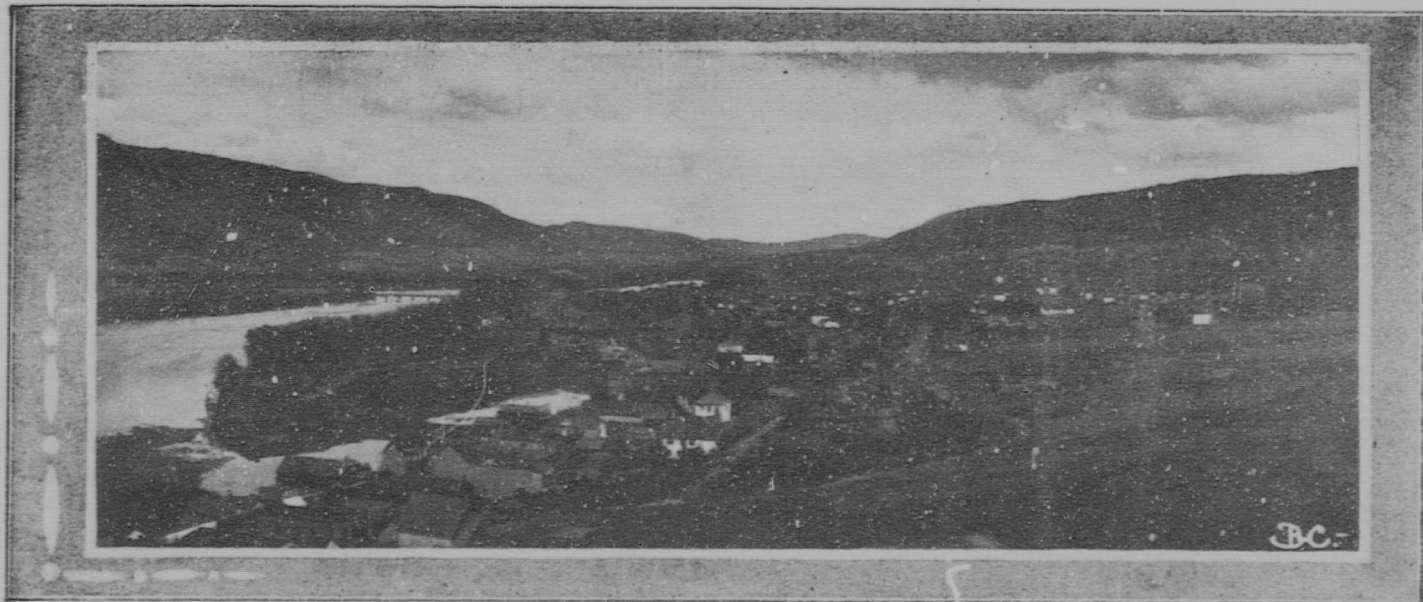


NWp
97.ika
Kish

KAMLOOPS

BRITISH COLUMBIA



The City at Kamloops

Kamloops, British Columbia



A Live and Progressive City. The Business Centre of a District Rich in Natural Resources.

KAMLOOPS, situated as it is at the junction of two large rivers which drain an immense territory rich in undeveloped resources, is by nature destined to become the most important city in the interior of the Pacific Province. The country drained by the North Thompson River and its tributaries stretches from the height of land lying nearly three hundred miles to the north, while the South Thompson River drains the great Shuswap system of lakes lying to the east. The potentialities of these two districts are as yet hardly realized by even the most sanguine believer in the future awaiting

Kamloops and surrounding district. Navigable for light draft steamers for over a hundred miles, the North Thompson is an outlet to a valley the agricultural resources of which are unbounded, the mineral resources almost undreamed of and the timber resources practically unlimited. Of the valley drained through the Shuswap lakes and the South Thompson River, the same may be said and to the other resources may be added those which make for successful fruit culture. Not only with respect to its water transportation facilities is Kamloops advantageously situated. The well constructed highways leading in all directions, north, south, east and west, make the city the commercial centre of a district of untold possibilities, both agricultural and industrial, and the situation of the city on the main line of the Canadian Pacific Railway gives ample connection with the world. Kamloops is the geographical, commercial and administrative centre of a district comprising sixteen thousand miles of the richest section in the Province of British Columbia—the very hub of a land of fertile valleys

NWp
1914

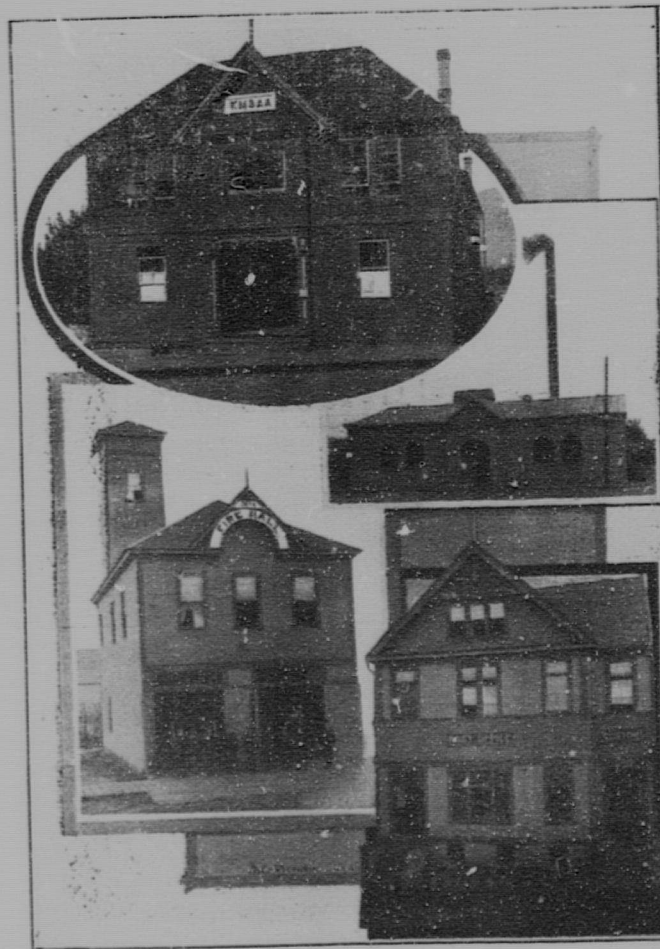
and windswept bunchgrass ranges, of streams and lakes and mighty rivers, of sun-kissed benches and lush meadow lands, of gloomy forests ready for the woodman's axe, and scarred rocks waiting the miners' pick, a country of wealth inestimable and attractions undeniable.

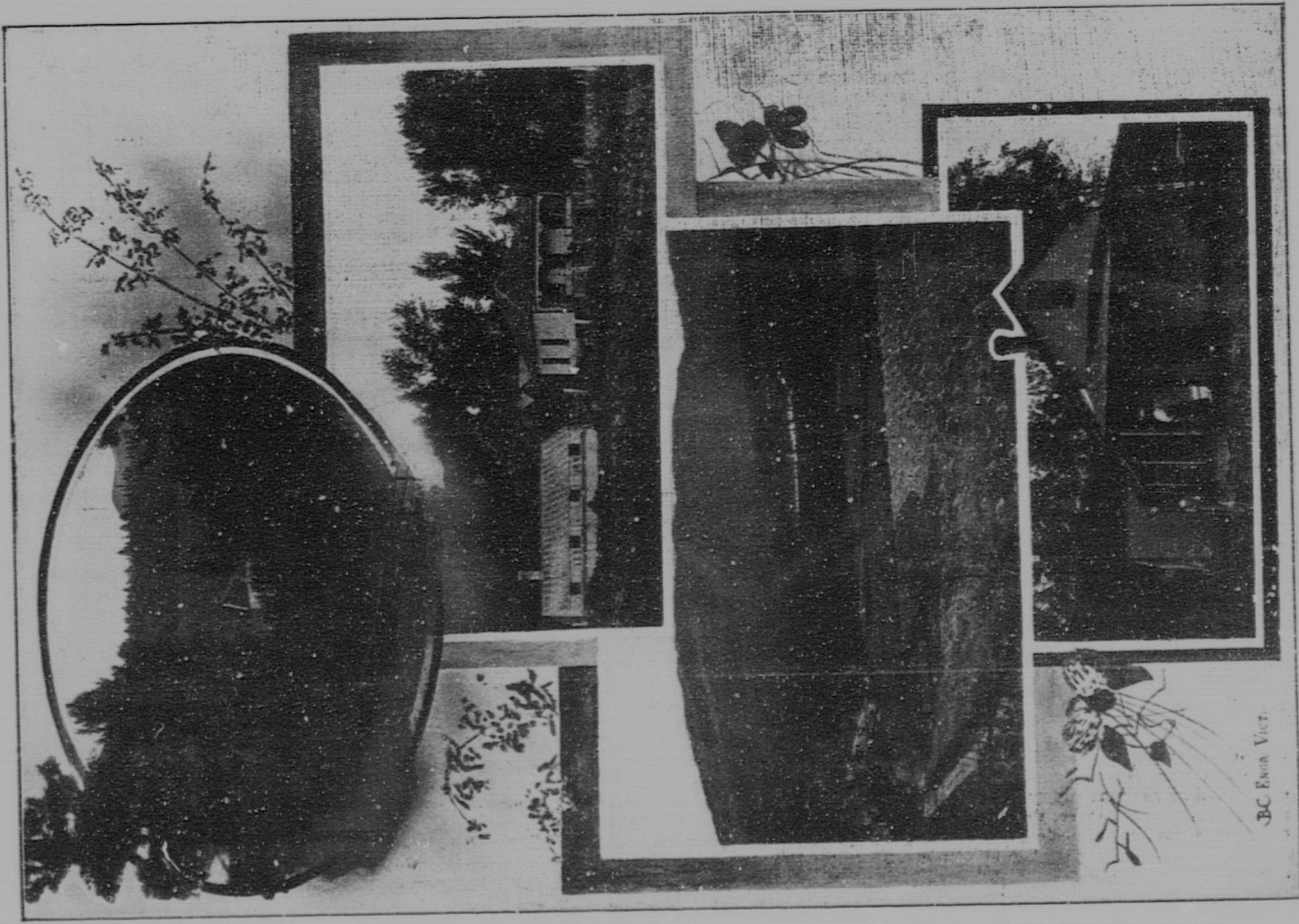
Ranching

FOR three-quarters of a century Kamloops has been the centre of the ranching industry of the interior of British Columbia, great herds of cattle have been bred and reared and fattened on the bunch grass slopes of the district and shipped from the city to supply the markets of the coast. The climate is conducive to successful cattle rearing at a minimum of expense as the winter feeding season is short and winter shelter almost unnecessary. The bunch grass of the ranges forms a ration which without any addition puts the beef animal in prime shape for the market or the breeding one in condition to face the short winter. The herds have for a long time been bred from a good class of sires and always with a view to beef production. Horses too are shipped in large numbers from the district and the quality of the mountain bred range fed animal leaves nothing to be desired. Of whatever breed the animal may be it is generally above the average in activity, strength and endurance in these respects, surpassing the horse bred and reared on the level plains. Breeding has been carefully looked after and the cayuse scrub sire of the early days has been almost entirely replaced by well selected clydesdales, percherons, thoroughbreds or roadsters, and the progeny has now lost the characteristics of the hardy but undesirable native horse.

Mixed Farming

OF late years the fencing of wide areas of leased lands on the ranges by the large cattle owners had forced the smaller land owner to turn by degrees to mixed farming and the settlers who have come into the district recently are nearly all devoting themselves to this branch of agriculture. In all directions there are small areas of choice land which are available for the purposes of the general farmer, and improved, or partly improved places can be secured on reasonable terms. In the parts of the district where irrigation is necessary water rights are sold with the place and of course add to its value. Close to the city the land available for homesteading is pretty well taken up but in the North Thompson Valley and at various points on the Shuswap lakes there are still locations open for settlement which, with time and energy properly directed, will develop into fertile and profitable farms. This is particularly true of the North Thompson Valley and the smaller ones tributary thereto. In this section there are several extensive tracts of extensive bottom land particularly suited for hay raising, and many miles of lightly timbered land suitable for diversified farming, dairying and hog raising. The soil in this valley is of two





BC Even Vict.

sorts, a heavy clay loam and a light, friable but fertile loam, both productive and readily tilled. The timber growth in most cases is very light in the bottoms and clearing does not entail any heavy work. The climate is all that can be desired and it has been demonstrated that for 110 miles up the river tomatoes, melons, corn, beans, in fact all the tender crops can be grown to perfection. Actual experience has shown that all the hardy fruits, apples, plums, cherries, pears and small fruits thrive and bear luxurious crops. There are many tributary valleys which offer opportunities quite as good as those to be found in the North Thompson River Valley, in fact some of the smaller ones are filled from river to head with prosperous farms and homesteads. The transportation facilities are even now being extended by the government and will be kept in line with increased settlement in the valley. In other parts of the district the lands available for homesteading are small in area and widely scattered but in the North Thompson country there is room for thousands of prosperous and contented settlers engaged in diversified farming in a congenial climate and amidst attractive surroundings.

Fruit Growing

FRUIT growing is as yet one of the infant industries in the Province of British Columbia but it bids fair in time to rival mining, lumbering or stockraising for the first position. Today southern British Columbia is acknowledged to be the finest fruit growing country on the continent and in southern British Columbia no other district is more peculiarly adapted to the success of this industry than is the one of which Kamloops is the centre. The South Thompson River Valley, The North Thompson River Valley, and all the smaller valleys in the Kamloops district will not only produce fruit in abundance but the quality of the product is equal to any and superior to most. The different varieties which are successfully cultivated here will prove, in competition with those produced elsewhere, to be of better colour, flavor and size. Apples, pears, plums, and cherries will mature in any part of the district, while in nearly all parts peaches, grapes, apricots and nectarines are prolific bearers. This is especially true of the South Thompson Valley, where irrigation is necessary. Here there are thousands of acres of bench lands in every way suited for fruit growing on a commercial scale and although the question of irrigation must be considered and the supply of water for this purpose is limited if gravity systems alone are looked to, pumping by means of gas engines can be resorted to in nearly all cases with profit and with no uncertainty as to the supply. The suitable benches are as a general rule no higher than 100 feet above the level of the river and in many cases much less. Small holdings of from five to twenty acres are quite sufficient in size for commercial fruit growing and if the intending settler does not care to take up the unirrigated tracts, obtaining his



THE Hudson's Bay Company, "The Great Traders of the Great West," have been established in Kamloops since 1813, when the first fort was erected just across the river from the present town and where now is situated the residential part of "Fruitland." When first established the post was known as Fort Thompson, but the name Fort Kamloops was adopted from the Indian one meaning "the place of meeting waters." Although the name of the fort has changed and nothing remains of the old post but its memory the business then established has been continuously in existence, growing with the growth of the country, keeping pace with its requirements and earning for itself a reputation for fair dealing which is enviable in these days of keen competition. The first little fort with its stockade and corralls was replaced by newer and larger buildings in 1863, this post being erected on the south side of the river and opposite the former stockade, and in 1885 when the march of progress had made a further change advisable a new building was erected and occupied until 1894 when the Company's stores were moved to the present modern and commodious building. Here the Company carries a large and well assorted stock of the very best quality of staple and fancy dry goods, clothing, boots and shoes, novelties, groceries and provisions, liquors and cigars. Everything found in this stock is of the best as the rule of the Company's stores has always demanded. Drawing as they do from the markets of the world and buying in quantities which the other retailers cannot buy in, they are in a position to ensure quality at the lowest figures possible. Amongst their special lines may be mentioned:

H. B. Point Blankets the Standard of the West

THESE blankets were used by the pioneers in the early days. The wise prospector always includes them in his outfit now because they are made specially for the H. B. Company to suit the requirements of this country.

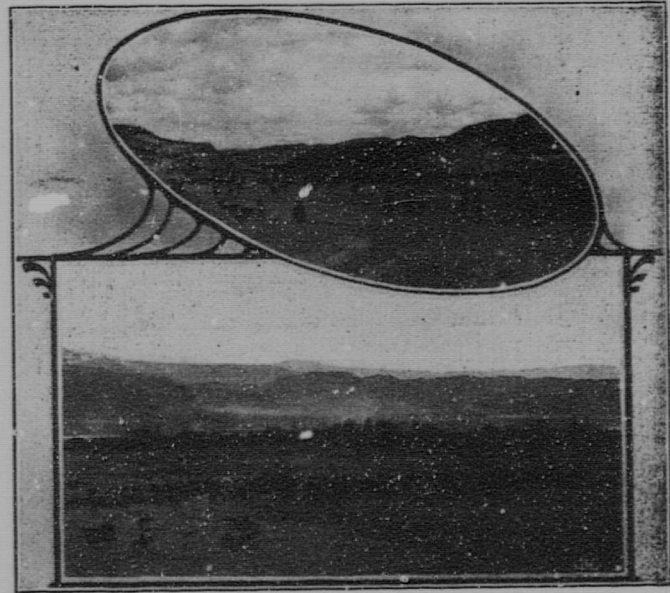
OUR FLOUR stands in a class by itself. We Make It, Sell and recommend it. We have it for all household purposes and sell it from \$1.50 to \$1.75 per 50 lb. sack.

water supply by power, he can secure locations in subdivided tracts which have been placed on the market by land companies, and which have the water supply brought from the hills by gravity systems. These subdivided lands can be secured at prices varying from \$100 to \$200 per acre with water rights included, and the cost of making an orchard in the district will vary according to initial price of land and local labour conditions. Twenty acres of the very best fruit lands in the district will when in full bearing pay a net annual profit of from \$125 to \$150 per acre—These figures are not obtained from guesswork but are compiled from actual returns. An unlimited market exists for the products of the orchard and fruit of first class shipping quality never lacks buyers. The increasing demand for British Columbia fruit will keep well in advance of the orchards and the wide spread desire to obtain choice small holdings in the Pacific Province is only a logical outcome of the rapid settlement of the wheat belt of the Northwest. Speaking of the Kamloops district His Excellency Earl Gray on his last visit to British Columbia said in reply to an address: "When the potentialities of your wonderful soil and climate become fully recognized the influx of settlers of the most desirable kind eager to develop your wonderful district will surpass all your expectations and your district can offer them opportunities of engaging in fruit culture under such ideal conditions as struggling humanity has only succeeded in reaching in one or two of the most favoured spots upon the earth."

Fruitland

ADJACENT to Kamloops, with which it is connected by a handsome four-span bridge of 1,000 feet in length, is the rapidly growing settlement of Fruitland, consisting of some 6,000 acres, and bordering on the North and South Thompson rivers. About four years ago the whole of this land was purchased by the Canadian Real Properties, Ltd., it being surveyed and cut into lots ranging from one acre upwards. With the expenditure of \$70,000 water has been brought on to the property by means of a canal, flumes and laterals, from Jamieson Creek, a distance of 17 miles up the North Thompson. To insure a sufficiency even in the driest summer, several large lake, 6,000 feet up the mountains have been dammed, so that now there is water enough to irrigate three times the acreage. The soil is a rich alluvial deposit of great depth, all cleared and ready for the plow, and with not a rock, stone or boulder to impede its progress. It will produce even the first year paying crops of tomatoes, melons, potatoes, beans, corn, etc., and the purest of water for domestic use can be obtained by driving a pipe 25 or 30 feet, and in many cases less. Only two or three years ago nearly the whole of this land was nothing but a desert of sage brush and sand, but since the life-giving water was turned on, comfortable homes surrounded by healthy young orchards are springing up in all directions. Ideal little homes they are, too,

many of them fronting on either the North or South Thompson, and commanding a view up these immense valleys for miles. A splendid suburb has been added to Kamloops, of which she may well be proud, and which even the most optimistic could never have foreseen. When the scheme of bringing water on to the great sagebrush flat was first mooted, it was looked upon by many as nothing but a gigantic hoax. When the canal was dug, water turned on, and a few lots sold, it was still characterized as a public hold-up and worse than a gold-brick proposition. But today the pessimists and carping critics are silent,



so marvellous is the change which has been wrought in the short space of two years.

Sunnyside

HAVING, for three-quarters of a century, been devoted to the interests of the stock raiser who required thousands of acres where the fruit grower only required acres, the Kamloops District has not heretofore been exploited as a fruit growing one. In consequence throughout one of the most fertile fruit raising and most desirable

residential localities in British Columbia small holdings have been hard to obtain. In the valley of the South Thompson River where nature has been prodigal with those gifts which makes for the success of the orchardist, the most desirable lands have been held for years by the stock raiser and have been cultivated on an extensive scale for fodder crops only, instead of being settled in small holdings and intensively cultivated by fruit growers as nature intended they should be. The large prices offered for the ranche lands by those who realized their value as fruit lands failed to tempt the stockmen who were contented with the returns derived from their herds, so the more important industry lagged behind in the Kamloops district while it flourished in the Okanagan. Time has altered this to a slight extent and now one of the oldest and best known stock ranches in the province has been secured by the B. C. Orchard Lands, Ltd., which is now offering the first block of subdivided lands to purchasers who desire small holdings in a good district. This estate which has been called "Sunnyside" lies on the north bank of the South Thompson River on which it has a frontage of four and a half miles. The soil is a rich clay loam and as it has been irrigated for fodder crops for nearly forty years is in the very best possible condition for the planting of orchards. No clearing is necessary and the land is free from stones. Lying as it does on the north bank of the river the entire estate slopes gently to the south and obtains the benefit of all the sun in a country noted for its prodigality of sunshine. It is sheltered from the north and east winds by the fir clad hills behind, which rise in park like terraces higher and higher, until they reach the height of land overlooking Adams Lake. From any point on the land the outlook is superb, a veritable panorama of river, range and foothills spreads itself before the eye, and no more enticing surroundings could be imagined for a prosperous and contented settlement engaged in pleasant occupations, as profitable as they are pleasant. The educational, religious and social advantages of Kamloops are at the disposal of the residents of "Sunnyside" as it is only a four hours drive over good roads; a three hours journey by launch or steamer, or an hour's trip by train from the city. It is the intention of the Company to augment the work of nature in making "Sunnyside" an ideal residential community as well as a prosperous one and the lots will only be sold to desirable settlers who agree to conditions which will make for the interests of all without being burdensome to any. The block which has been laid out has been surveyed in such a way that each holding has a main irrigation ditch within its boundaries and all face a full width road. Ample river frontage remains unalienated and will be kept for the benefit of all residents. Within a few short years this property will be the home of a hundred or more families instead of a single family and with usual ranch help. The development of just such tracts of fruit land will ensure increased settlement for the Kamloops District.

BANK OF HAMILTON

PRESIDENT, HON. WM. GIBSON
 VICE PRES. AND GEN. MNGR., J. TURNBULL



Head Office:
 Hamilton, Ontario

Capital paid up....\$ 2,500,000
 Reserve Fund..... 2,500,000
 Total Assets..... 32,000,000

95 Branches throughout
 Canada

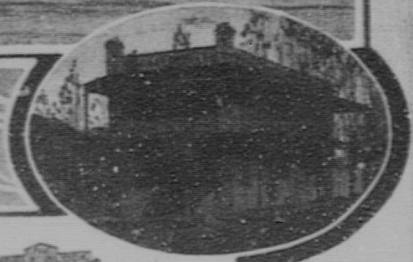
THE KAMLOOPS LIVERY STABLES

First Class Driving
 and Saddle Horses
 at Reasonable Rates

T. COSTLEY

PROPRIETOR

Telephone 15



R

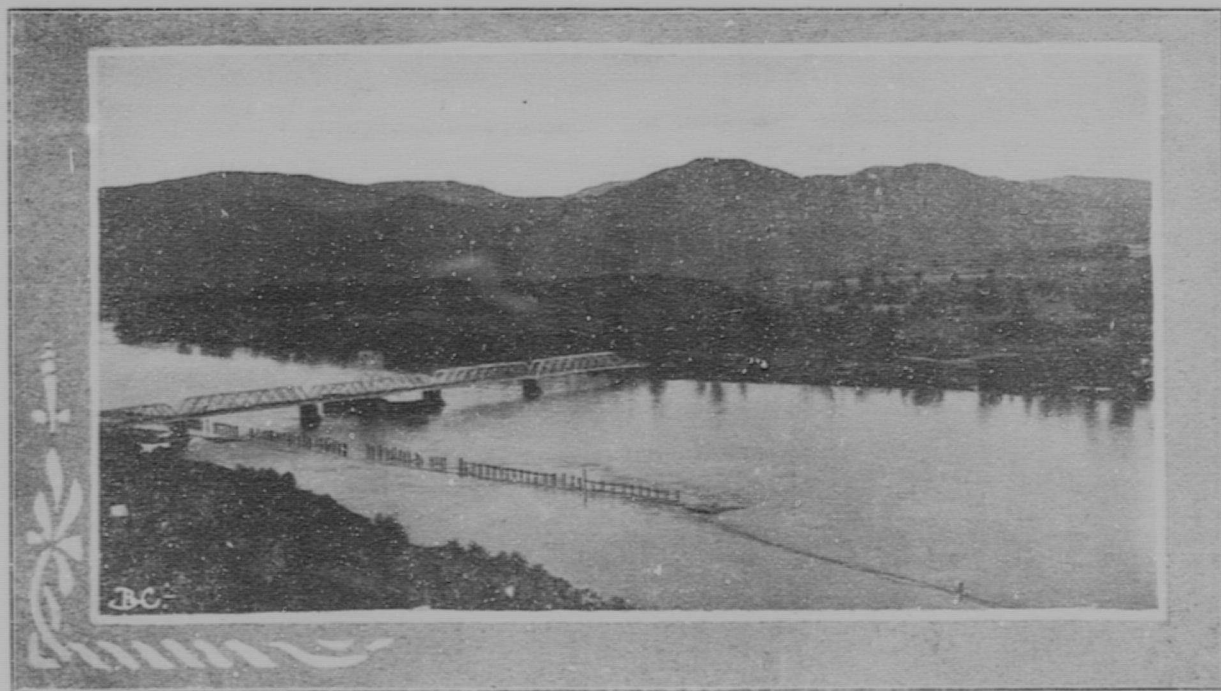


A. T. Robinson

TO this energetic real estate agent is due very largely that activity in real estate which is significant of the confidence which the residents of any city or district have in the present stability and future growth of any particular place. The subject of "Kamloops and its future" is a favorite one with Mr. J. T. Robinson who in season and out of season is ready to talk real estate and property values, past, present and future, with anyone interested. Having a thorough knowledge of his subject and of the city and district his opinion as to present or probable value of any particular piece of property is generally founded on correct premises and as a consequence his list of properties will be found properly valued and not held at any exorbitant figures. Mr. Robinson lists city business properties, residential properties, building lots both for business and residential purposes, ranches, farm lands and fruit lands, and what is more he is generally

in touch with buyers and thus can make quick turnovers for his patrons. He is the managing director for the British Columbia Orchard Lands and as such has the handling of sales for the Company's property at "Sunnyside" where they have, what are perhaps, the choicest fruit lands now in the market in British Columbia. As a director of the Tenderfoot Mining Company and The Old Dominion Copper Development Syndicate, Ltd., Mr. Robinson takes a keen interest in the mining future of the district and lists promising prospects for sale on advantageous terms. As the representative of the New York Life he has covered a large portion of the Interior of British Columbia and is recognized by the Company as one of their most valuable agents. Mr. Robinson also represents several fire insurance companies which have a large amount written on Kamloops property. With any person requiring information concerning the city or district Mr. Robinson as secretary of the Ten Thousand Club is at all times pleased to communicate and enquirers will find that the information they seek will be as prompt, as full and as accurate as the circumstances will allow. Mr. Robinson publishes monthly a real estate review which he will be pleased to mail to any person requesting copies. He will also be pleased to mail pamphlets concerning "Sunnyside," and the bulletins issued from time to time by the Board of Trade referring to Kamloops and its opportunities.





Mining

THE Kamloops District covers an area of mineralized lands which bids fair to become one of the most important of the many mining sections of the province. From the cinnabar deposits near Savonas on the west to the cottonbelt galena locations on Seymour Arm on the east; from the gold quartz finds of Stump Lake on the south to the coal fields of the North Thompson Valley the entire district is rich in minerals, not of one kind but of several. Immediately south of the city and only a few short miles away lies what is known as the Kamloops camp which has up to the present time been the principal scene of mining activity in the district. This camp lies in a belt of basic granite rocks traversing the country in an east and west

direction for a distance of some seven miles. The belt has an extreme width of nearly three miles between the tertiary beds on the north and the contact with the Nicola series on the south. The outcrops of mineral bearing rocks occur throughout the entire area and several veins of large size and containing good values in copper and gold have been opened up by workings of greater or less extent. Coal Hill is a prominent high part of this belt and on this hill the greater part of the development work has been done. In the "Iron Mask" the owners have a property which is a fully developed mine down to the 700 ft. with ore blocked out and work well ahead. Here the ore body is of large size and the average grade of the ore is high. The surface equipment, buildings and machinery are all of the best and the Company operates its own sawmill, concentrator, small smelting plant.

William Hargraves

COMMENCED business in Kamloops in 1868 after several years service as foreman smith at the Canadian Pacific shops here. Since then he has developed a modest blacksmith and horseshoeing establishment into an all round machinery, implement and general hardware concern, doing a very large business in special lines and a good business in general lines. The blacksmith and horseshoeing shop is still running but it has grown little by little, taking in more room, annexing adjacent buildings or forcing the erection of new ones until it now takes up five times the space it originally required. There



is carried a heavy line of agricultural implements, amongst which will be found the Deering Harvesting Machinery Co's mowers and binders, the John Deere plows, disc harrows, drag harrows, cultivators, seeders, rakes, hay tedders, hay loaders, rack lifters, stacking forks, in fact everything needed by the farmer for the preparing of his land, the sowing of his crop and its cultivation, harvesting and storing. When the farmer markets his crop he can send it to town in a Moline wagon purchased from Ms. Hargrave's stock and drive in himself in a buggy made by the Canada Carriage Company and purchased from Hargraves. The Empire Cream Separator is another special line handled by this enterprising dealer, who also stocks every kind of dairy utensil in use on well conducted farms. Another specialty is fence wire and a large stock of the Lamb Fence Company's wire is always on hand and generally a carload or two on the way. Another special line is bicycles, the Canada Motor Cycle Company's wheels being the make carried. In fact one in search of almost any article in the metal or machinery way will find what he is after at Hargraves' establishment. If it is not in stock it will be sent for and if it cannot be procured it can be made. In the smithy the work done includes every branch of the trade and on the shoeing floor special attention is

paid to remedying defects in gait or action by the proper application of shoes turned for the purpose by an expert. Mr. Hargraves has been eminently successful in building up a good business and by careful attention to details and to the requirements of his customers intends to merit further business. Personally Mr. Hargraves has the confidence of the residents of the city and as a mark of this confidence he was elected at the last municipal election for aldermen, standing well above his opponents and at the top of the poll.

WILLIAM HARGRAVES

Dealer in all kinds of

AGRICULTURAL IMPLEMENTS

General Blacksmith and
Machine Work

AGENT FOR

Deering Harvesting Machinery, Moline Wagons,
John Deere Plows, Canada Carriage Company's
Buggies, Lamb Fence Co's Wire, Canada Motor
Cycle Bicycles, Empire Cream Separator.

electric lighting plant and compressor. About 20,000 tons of ore have been shipped from this property before for some unknown reason work was suspended and development ceased for a time. The difficulties have now been adjusted and the owners are preparing to reopen on a larger scale than before. A new shaft of larger capacity will be sunk and a larger hoisting plant installed. A large smelter will be erected and the ore treated at home instead of being shipped to outside reduction works. This will ensure a large addition to the pay roll distributed in the city and will also ensure the opening up of other properties in the vicinity which are now lying idle for want of local treatment facilities. Several other properties have been developed to

proved up from whence shipments can commence at any time after local facilities for treatment have been provided. The Kimberly group, the Truth group, the Old Dominion group, the Orphan Boy group, the Last Chance, the Evening Star, the Mountain, the Ajax group, the Laura and many other prospects on the hill are all worthy the attention of mining capital and it is only a matter of time before this capital will be forthcoming in quantities. All nearly all these properties the limit that can be reached by the ordinary prospector has been reached and the assistance of the promoter and the capitalist has become absolutely necessary. It is not only to the Kamloops camp proper that the city looks with confidence. In several other directions



a less extent than has the Iron Mask. The "Pothook" has a large amount of underground work done and the mine is developed to the 300 hundred foot level. This property was closed down for some time but has recently been sold to an English company and will be reopened at an early date. The "Python" has also a large amount of work done and recent development in the long tunnel driven to cross cut the vein at some depth below the bottom of the shaft has proved the existence of the orebody at depth. This tunnel, which is some 500 feet in length, was driven for the purpose of draining the upper workings as well as for developing the mine. Work is kept up continuously on the "Wheal Tamar" where a large body of medium grade ore has been

the activity of the prospector and the claim owner has been rewarded by locations which only require the magic touch of capital to transform them into profitable mines. At Copper Creek on the north side of Kamloops Lake a large amount of work has been done on some of the copper properties. The Tenderfoot Mining Company and the Copper Consolidated, Ltd., have good prospects which only need capital to open them up to the stage where continuous shipments are possible. Near Copper Creek too there are large deposits of cinnabar which have been worked spasmodically for some years, and a large amount of commercial quicksilver produced. The grade of the ore is good and with proper handling and retorting the deposits could be worked to



Frank Rushton

BETWEEN Winnipeg and Vancouver there is no town which can boast of a more up-to-date sporting goods establishment than that which is conducted by F. Rushton at Kamloops. The neat premises on Main Street, which is well known as the "Inland Armory," has been fitted up by Mr. Rushton expressly for the business, and the stock of rifles, guns, fishing tackle and sporting goods generally is displayed in such a manner as to at once arrest the attention of any sportsman. The various lines carried in stock include all the well known makes of high grade guns, all the standard calibres in rifles by the best makers with any amount of first class ammunition for all arms. The disciple of Isaak Walton will find rods of all kinds, reels, flies tied expressly for local waters and standard flies for all waters, lines and leaders, casts and creels. The field sportsman will find compasses and cutlery, clothing and camp furniture in endless variety. There is a full line of accessories for other sports, indoor and outdoor, which will be found in any modern sporting goods store. As Mr. Rushton is a practical gunmaker with a long experience in the requirements of this district, repairing, and re-boring is made a specialty. No matter what the grade of the arm may be it may be freely entrusted to him to be put right.

Chris Outhett, A. R. C. Sc. London
CHEMIST & ASSAYER

Fire and Wet Assays. Analysis of Ore, Coal and Industrial
Products. Ores Tested for Working Processes.

Office opposite Post Office.

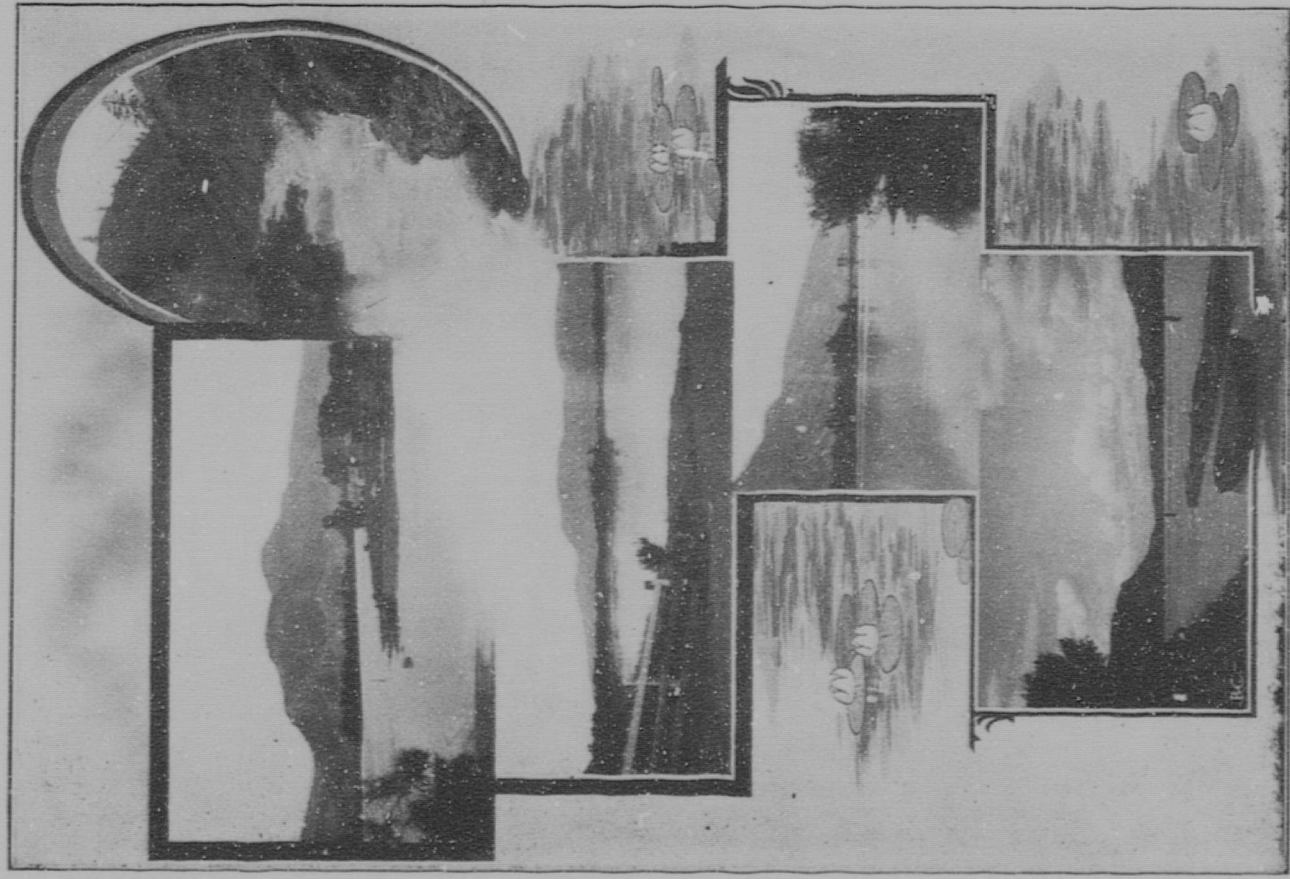
Kamloops, B. C.

Kamloops Brick Yards

We manufacture the best kind of Machine Bricks. Builders and Contractors plans and Estimates Furnished.

Johnston & Co., Limited

re
an
at
et,
,"
for
ns,
is
rest
ous
own
lard
any
rms.
s of
local
s and
sman
and
is a
ndoor
any
ashiton
erience
airing,
matter
ay be



Build-
rushed.

imited

John Milton

DOES a big business in flour and feed, hay and grain, wood and coal, and moreover will do all kinds of light transfer work and heavy teaming. He handles in large quantities the product of the Alexandra Milling Company's flour mills at Brandon, Manitoba, and the success with which the effort of that Company to make their Premier Hungarian flour a favorite with the housewives of Kamloops and district is largely due to his agency. In coal he has always a good supply, both soft and hard, in all sizes for domestic use or demanded by his market. For forge use he carries the Cumberland Blacksmith Coal which has no equal in the country. Wood, either dry or green, fir, birch or cottonwood will be delivered promptly whenever ordered and at the closest figures the supply will allow. Bran and shorts and feed grains he procures from the most reliable sources and in quantities large enough to give his customers the benefit of a very close price.



Hay and oats of the very best obtainable he buys in the local market whenever possible but if the right qualities to suit purchasers cannot be obtained from local growers he is not stuck but brings his supplies from other sources. Mr. Milton makes a specialty of seed grains in season and procures his supplies of seed wheat, oats or barley from stocks that he knows to be above suspicion, thoroughly cleaned and free from all cockle, rape, mustard or other objectionable seeds, as well as from smut, rust or other diseases. In the ordinary transfer and teaming end of the business, orders are looked after promptly and delivery made as soon as practicable. Special contracts for teaming heavy machinery or anything of that nature will receive every consideration and the work be done at the lowest price which good business will allow. As Mr. Milton has a full equipment for any work of this kind he is prepared to undertake any special work at the very shortest notice.

Imperial Brewery

Manufacturers of

Rocky Mountain Beer
Siphoe Soda & Ginger Beer

The best in the market for home consumption. Bottling works for export.



The Imperial Brewing Co., Ltd.

Emil Stern, Manager



Fish Lake

TWENTY-THREE miles south-west of Kamloops and connected with the city by a good waggon road, lies Fish Lake, one of the most attractive resorts for the disciple of Isaac Walton amongst the many fine fishing waters of the Province of British Columbia. The sportsman can leave Kamloops in the morning and after a beautiful drive over the bunch grass hills through the mining section of Coal Hill into the cool shades of the timbered country south and on to the Lake, can be sure of the very best of sport at any time during the trout fishing season. The drive itself is a charming one at all times. The road as it winds its tortuous way across the ranges and through the hills brings every moment into view a new glimpse of the unchanging beauties of range and forest, jewel-like lake or grim gray rock, and from a scenic view point the climax is reached when the long line of glistening water with its background of verdure clad hills, breaks upon the sight. There in the cool depths of the lake the enthusiastic angler knows he will find the mountain trout, strong and gamey to the last degree. A few minutes more and the visitor arrives at the prettily situated stopping place kept by R. Cowan, who has provided accommodation for the sportsman superior to that afforded by the majority of mountain fishing resorts. The guest is looked after from the time of his arrival in a manner which does credit to the host of this popular resort. Mr. Cowan takes a pride in knowing that any sportsman who has cast a fly over the waters of Fish Lake and, amidst such beautiful surroundings, has heard the "song of the reel" so sweet to the fisherman's ears will, when his holiday is over and he

has returned to the routine of everyday life, long for a return of the fishing season and another visit to the Fish Lake Hotel. The sport to be obtained at the Lake has been praised by men who have fished over all the noted trout waters of the American continent. Visitors from as far distant points as New Orleans who have compared it with that to be obtained in some of the much vaunted streams and lakes of the United States come year after year for a fortnights' outing at the pretty British Columbia lake, and each year the sport obtained by those who have come and come again leads new guests to Mr. Cowan's Hotel. The fish taken at this place are the true mountain trout, and will run from twelve ounces to three pounds in weight, the average take being about twenty ounce fish. Casting is all done from boats and with plenty of room. The fly used varies with the season and the weather, but in Kamloops flies can be purchased which have been tried especially for this water, and the visiting angler will do well to have some of them in his book for use when the standard flies are not killing fish. The day's catch procurable will be more than enough to satisfy even the most insatiable of fisherman, and the more moderate desires of the sportsman who is satisfied with a fair basket of good fish, the outing in the glorious atmosphere of this hill country, the keen appetite and the zest of life which it engenders, the after dinner pipe and story and the sweet health giving sleep, deep and dreamless, which follows a day on the waters. If notice is given by letter, rooms will be reserved for intending visitors and if necessary Mr. Cowan will meet the trains at Kamloops and drive the visitor to the lake himself. Boats and tackle are always on hand and every attention will be paid to the comfort of guests of the Fish Lake Hotel.



advantage. On the west side of the North Thompson River lies an immense range of country tributary to Kamloops which as yet, viewed from a mining standpoint, is practically unknown. From all indications this district will reward any intelligent prospector with discoveries which may mean a fortune. In the vicinity of Jamieson Creek and some eighteen miles north of Kamloops some large bodies of payable quartz exist and several claims have been located and partially developed with encouraging results. The values are low grade but if

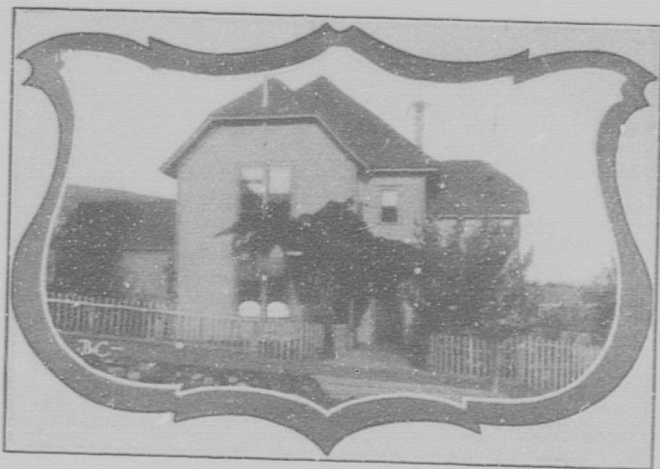
operated by modern methods and on a large scale will return handsome profits. On the east side of the North Thompson River, in several valleys tributary to that of the main stream and including the stretch of country lying between Adams Lake and the Shuswap Lake, lie numberless possibilities which have heretofore been handicapped in the process of development by lack of transportation facilities. The geological formation of this district favours the existence of large bodies of high grade galena and medium grade mixed ores, but gold bearing quartz is indicated in some parts of the district. The advent of railroad communication from Kamloops up the Thompson will bring the various properties now partly developed within reach of their markets and ensure steady development and encourage the further prospecting of this promising district. The Homestake Group at Adams Lake was one of the earliest locations in this district and was opened up on a small vein of high grade gold quartz. In the course of development an immense body of low grade galena was discovered on which a great deal of work has been done. Recent discoveries in metallurgical science bids fair to overcome the difficulties which stand in the way of reduction of the ores of this property, and place the property on a paying basis.

Other discoveries in the vicinity of Adams Lake, on Louis Creek, on Barrere River, on Boulder Creek and at other points up the North Thompson Valley have been partially developed and warrant the closer attention of prospectors.

On Shuswap Lake at different points properties have been located and veins opened up which have all the earmarks of mines and as in nearly every case the deposits are close to the waters edge, the ore will be handled at a minimum expense when smelting facilities are afforded at Kamloops or at some other convenient point on the river or lake.

That custom smelting facilities will be afforded within a reasonable time by the owners of the Iron Mask or by some independent smelting concern is almost certain. No better situation could be procured for works of this nature. Coal exists in the North Thompson Valley at Neewikwalston Creek, about fifty miles above Kamloops. It has been tested both as steam and coking fuel and has been found satisfactory in every particular. The deposit has been developed by an incline slope about 400 feet in length and two working seams have been opened up. The upper seam has a width of 48 inches of clear coal with only one parting of about two inches of "blackjack." The lower seam is about thirty-six inches in width and has two seams of "blackjack" in it. The outcrop is only about a mile from river transportation and the coal bearing area is known to extend under the river and to outcrop again on the west side.

The necessary fluxing material too is abundant and close to river transportation. Limestone is found in large quantities near the town and the quality of the iron taken from the Glen Iron Mine at



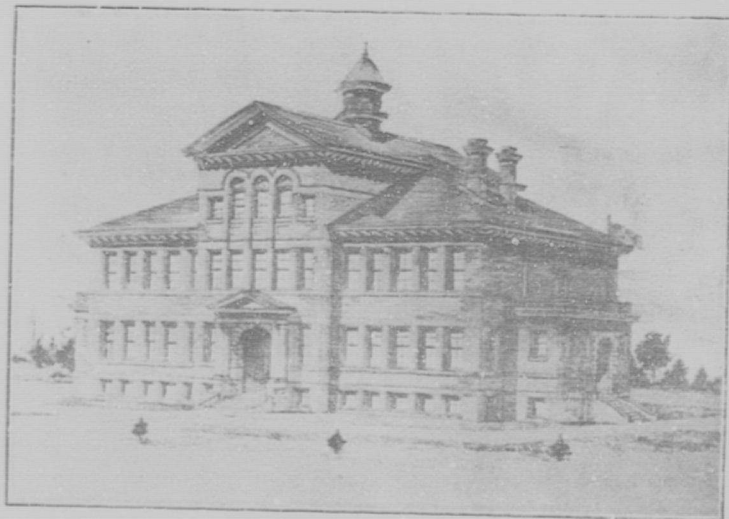
CITY HALL

Cherry Creek on the south side of Kamloops Lake is such that it is particularly adapted for flux. From this property about 20,000 tons have been shipped at various times, the most of which has gone to the coast smelters. The ore runs from 60 to 66 per cent. iron with practically no sulphur or phosphorus. The extent of the deposit is estimated by competent engineers as approximately 8,000,000 tons. The prospector will find in the Kamloops District a country which presents potentialities unrivalled in any other part of British Columbia. The climate, the country and the facilities at his disposal in his search for the key to nature's treasure vaults will make his labors pleasant as well as profitable. The man who wishes to invest in undeveloped prospects with a view to working them and afterwards selling at a big figure will find copper-gold propositions, silver-lead prospects, coal or iron claims whose owners are willing to do business on reasonable terms. The capitalists and the promoters have been watching the district for some months and when the time is ripe will be ready to step in and develop the mineral bearing lodes of the Kamloops District with a view to reaping a rich reward.

The Lumbering Industry

AT the present time more than ordinary interest centers in the development of the lumber industry and of all those who are engaged in exploiting the natural resources of the Kamloops District

the lumberman is the most energetic and progressive as well as the most farseeing. The vast timber areas which lie along the magnificent water stretches provided by the North and South Thompson Rivers, and Shuswap and Adams Lake, have attracted the attention of the lumber barons in quest of new worlds to conquer, new forests to fell and new mills to feed. The Kamloops District contains some of the best timber in a province noted for the extent of its forest resources. Not so large in size as the giant firs and cedars of the coast districts, the timber trees of the interior by reason of their slower growth are finer in grain and tougher in texture than the more rapidly matured trees obtainable on the limits situated where the rainfall is heavier. Fir, red pine, white pine, cedar, spruce, hemlock, birch and cottonwood provide the material which is made into lumber in the mills of Kamloops and district. On the limits now being logged the fir and red pine and the cedar predominate but beyond the limits where the camps are at present operating the spruce becomes most plentiful. The principal source of supply for Kamloops mills lies in the valley of the North Thompson and along Shuswap Lake and its arr s. In the North Thompson Valley the cut last season amounted to over 8,000,000 feet BM. The Shuswap Lake limits supplied 20,000,000 feet BM.



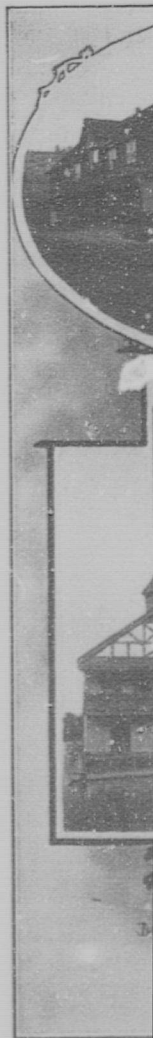
NEW PUBLIC SCHOOL BUILDING



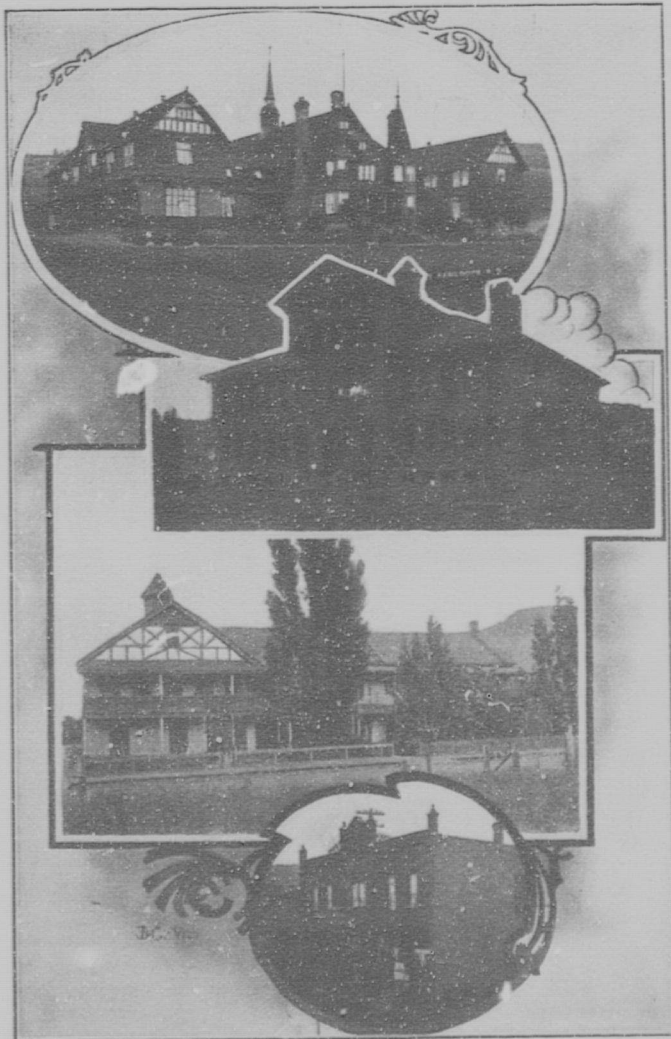
Caribou Lodge

ADAMS Lake is a beautiful stretch of water some fifty miles in length and averaging three miles in width lying to the north of the South Thompson River into which its waters debouch through Adams River a swift and turbulent stream about eight miles in length. This long, narrow lake is an arm of the great Shuswap system and like the main lake is of immense depth, clear and cold, and for the greater part of its shore line the waters lave the feet of the precipitous mountains looming in fir clad grandeur directly from the shores. At some points the ascent is easier and where mountain fed streams have worn a tortuous way through the defiles of the rocks and down to the lake there are many beautiful spots for camp or cottage where the sportsman will be within easy reach of some of the best big game shooting in the Province of British Columbia. The territory has not been visited as frequently as some of the other districts whose charms are better known to the tourist sportsman, but this has been mainly for the reason that guides and outfits could not be procured as conveniently as they could in some other sections where more attention has been paid to the requirements of the big game hunter. This lack has now been supplied by the establishment of a tourist and sportsman resort at the mouth of the Momich River which flows into Adams Lake about forty-five miles from its southern end and at the most picturesque spot on the entire shore. Caribou Lodge, as Mr. D. L. Smith, a Chicago man, has called the hotel which he is erecting here at the

gateway to a magnificent stretch of the genuine wilderness, will be conducted in the interests of the sportsman who is in search of new ground to cover, when the wanderlust bids him lay down the tasks of every day existence and live for a time near to nature's heart. The site chosen by Mr. Smith for Caribou Lodge is an ideal one at the mouth of one of the largest of the streams which take their rise in the mountains guarding the lake. A beautiful flat with a background of forest and a long uninterrupted view of the lake and the hills lying far flung to south and west. Superb as the situation is from a scenic point of view it is as advantageous as it is attractive, for it is within easy reach of splendid caribou country and the very best of mule deer shooting. The vicinity has plenty of bear, both black and grizzly, and for the shot gun there are grouse of all kinds and innumerable ducks and geese. The shooting is good, no matter what the visitor's particular quest may be and the fishing is if anything a little better. The largest mountain trout in the province are taken at Adams Lake with the troll, and the fly fisherman will find plenty of game, strong fellows to task his skill and test his tackle. Mr. Smith is putting launches on the lake and will also have row boats, pack outfits and guides ready for his guests when the new resort opens about October 1st, in time for the Caribou shooting and not too late for the other game. A letter to his address, D. L. Smith, Caribou Lodge, Adams Lake, P. O. Shuswap, B. C., will bring detailed information concerning this, the only strictly sportsman's resort in British Columbia.



ill be
f new
sks of
The
at the
in the
ound of
ing far
a scenic
within
ule deer
zzly, and
le ducks
vi-itor's
e better.
ms Lake
e, strong
s putting
utfits and
at October
the other
ge, Adams
n concern-
mbia.



and from other sources were drawn logs cutting about 20,000,00 feet BM. The mills of the City are the Lamb-Watson Comp.ny's plant with a daily capacity of 150,000 feet BM., the Monarch Lumber Company whose mill has a daily capacity of 40,000 feet BM. per day, and the Thompson River Lumber Company mill cutting 15,000 feet BM. per day. The Adams River Lumber Company has in course of erection a mill which will have when completed a daily cut of 100,000 feet BM. and will draw its raw material from immense limits which the company has secured about Adams Lake. Besides these larger concerns there are small mills operating at different points in the district; at Grande Prairie, at Sunnyside, at Ducks, at the Iron Mask Mine and other places. The average number of men employed by the various lumbering concerns operating in the district is about 300 and the average pay roll amounts to over \$20,000 per month. This includes employees of the logging camps as well as of the mills. The equipment of the mills is of the most modern kind and the Lamb-Watson Company has a plant which for economy in production, ease and speed in handling material and quality of output is second to none in the province. The output of this mill as well as that of the Monarch Lumber Company is sold almost to the last stick in the provinces east of the mountains. The output of the Adams R. Lumber Company will also be for shipment to the east while the smaller plants supply the local trade.

Other Industries

IN addition to the ranching, farming, fruit growing, mining and lumbering industries which must at all times contribute to the prosperity of the city and which will as the years roll on and development proceeds largely increase in importance, there are other sources to draw from. A brewery and bottling works running to its utmost capacity, a cigar manufactory employing from twenty to thirty hands, a sash and door factory, a large brick yard, two furniture manufacturing establishments, and a harness and saddlery manufactory and two printing establishments add their quota to the payroll expended in the course of manufacturing.

Commercial

THE merchants and business men of the Inland Capital are wide awake, up to date and progressive. All lines are represented in the city and the stocks carried are of a class far superior to that usually displayed in a town of the same size. No resident of Kamloops or the surrounding district need send away for a single article. Here at home he may have his house built in Kamloops of stone quarried from district quarries, brick manufactured by a home firm, lumber sawed and dressed in the city and finished by Kamloops workmen, with paints, oils and paper purchased from local stocks. The plumbing,

gasfitting and electric wiring can all be furnished here and installed by firms who make a specialty of such work. He can furnish his house from garret to cellar from the stocks in town, provision it and clothe the inmates, buy his horses, harness and carriages or hire them, get his guns or rods, his ammunition or flies, everything that necessity, comfort or convenience, business or pleasure can suggest as a want for man or woman, old or young, from the lace embowered cradle of the infant to the coffin in which to lie for the long last sleep.

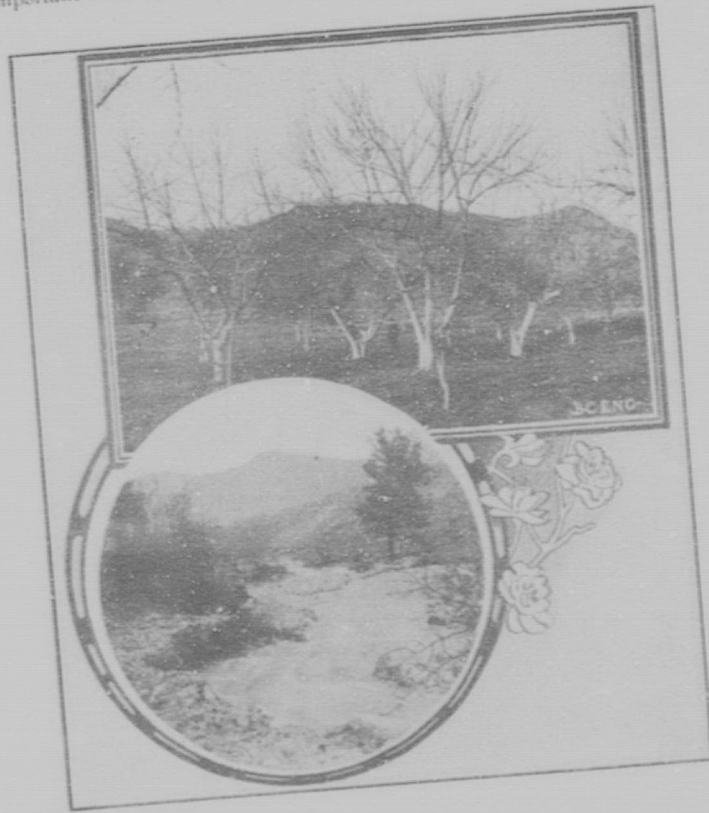
Residential Advantages

PICTURESQUELY situated along the base of a high plateau which fringes the south bank of the Thompson River and opposite the mouth of the North Thompson River, Kamloops has been favoured by nature with an ideal site. The situation was chosen by those intrepid pioneers who erected the first fort in 1813 and one is almost led to believe that it was selected not only for its strategic position at the centre of an immensely rich country but also for the added charm of scenic beauty. Since the first stockade fort was built a century ago the place has gradually increased in size and importance. Through all the stages of trading post distributing point, cow town, railway construction centre, straggling town, the growth has been steady and substantial until the one time hamlet has become an incorporated city boasting many of the conveniences of modern metropolitan life. The city has the reputation in the province of being conservative and inclined to be easy going, yet this young city has its own electric light and water systems, an electric fire alarm system and a modern sewerage system. It has an up to date fire fighting apparatus, and a conveniently arranged central fire hall. It has broad and well kept streets, lined with an abundance of graceful shade trees, and trim velvety lawns marking the many comfortable home sites that are owned by a settled and prosperous people. Besides the conveniences of modern life which are owned by the city the residents have all the usual ones supplied by other concerns. Telephone connection with all points on the lines to the south; telegraphic communication with the world; express and money order offices; good schools and hospitals, churches and lodges, in fact all the requirements for a comfortable, convenient existence amidst the most desirable surroundings.

Public Institutions

THE City not only possesses the institutions which pertain to every well ordered city, but it possesses many important Dominion and Provincial Government establishments required by the increase of business throughout the large section of the southern interior of which Kamloops is the administrative headquarters. The Dominion lands

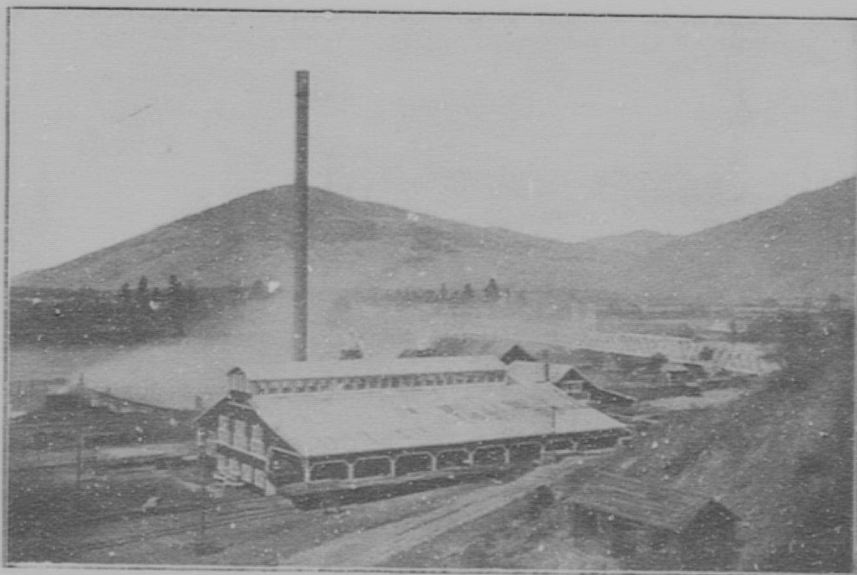
in the railway belt are managed from Kamloops where is situated the Dominion Land Office, the office of the Homestead Inspector, and the Timber Inspector's office. It is also the headquarters of the Indian Agent for Yale-Okanagan agency which has an Indian population of about 4000. A sub port of customs and Inland Revenue is maintained at the Dominion Government building, in which is located the Post Office as well as the other Federal offices. The militia department has a commodious drill hall which is headquarters for No. 3 Company Rocky Mountain Rangers. The Provincial Government has several important buildings in the city. The Government Agent's office is



THE K
plant a
miles
the S
at its
increas
already
their pr
Kamloo
The m
and eco
they pu
the pre
into pos
plant ha
added
until it
the mos
the pro
plant co
double
8 in. ha
6 in. h
double
rip saw
the who
three en
450 h. p
steam is
five 66 in
long. T
ed with
for the u
scrap of
expensiv
kickers
capacity
and 40,00
equipped
with trac
arranged
material
cedar an
yellow an

The Lamb-Watson Lumber Co., Ltd.

THE Lamb-Watson Lumber Company commenced operations in Kamloops something over a year ago when they purchased the plant and goodwill of the Kamloops Lumber Co., as well as a large mileage of good timber berths in the North Thompson Valley and on the Shuswap Lake System. The Company having unlimited capital at its call lost no time in improving the plant and piling yards, increasing their holdings of timber and generally increasing the already large operations of their predecessors, the old Kamloops Lumber Co'y. The mill was a modern and economical one when they purchased, but since the present owners went into possession the entire plant has been overhauled, added to and improved until it now stands one of the most complete mills in the province. The mill plant consists of one 14 in. double cut band saw; one 8 in. band re-saw and one 6 in. band re-saw; one double edger, one circular rip saw, six planers, and the whole is driven by three engines developing 450 h. p. combined. The steam is furnished from five 66 in. boilers 18 feet long. The mill is equipped with devices of all kinds for the utilization of every scrap of material without expensive handling, has steam nigger and loader, and has steam kickers throughout the entire sawmill for the handling of lumber. The capacity of the mill when worked to the full is 150,000 feet of lumber and 40,000 lath per day. Besides the mill machinery there is a fully equipped machine shop. The Company has very large piling yards with trackage way between each tier of piles and the whole place is arranged to facilitate the handling and shipment of the product. The material cut by the Company at the Kamloops plant is chiefly fir, cedar and red pine, although they handle large quantities of hemlock, yellow and white pine and spruce. The Company has also obtained



control of the mills at Arrowhead where they manufacture the cut from the Columbia River limits owned by them. The active management of the business of the Company is in the hands of Otto Lachmund, the secretary-treasurer and general manager of the Company. Neil Murray is in charge of the outside affairs of the Company at Kamloops while Mr. Porter is in charge of the office staff. The business of the Company is almost entirely done with the Northwest provinces and only the largest of local orders are sought. The large number of men employed by the Company, and the public spirited way in which the

officials of the Company have met every advance has made the Lamb-Watson Company a factor in the business life of the city. The Lamb-Watson Company have two steamers now in commission on the waters of the district and a new one was launched recently and now awaits the installation of machinery. As the North Thompson River and the Shuswap Lake system are navigable for several months in the year and we understand that the "C. R. Lamb" will, when completed, provide for a regular schedule and will be arranged for passenger service, it will prove a factor in the transportation facilities of the town. At present the steamers "Ethel Ross" and "Riffle" are in constant use for the

Company's own purposes, and moreover are not fitted for any regular passenger service, so Mr. Lachmund in laying plans for the new craft decided to not only make the new boat powerful enough to handle the log rafts but to build it properly arranged for the accommodation of passengers. The Dominion Government is now building a dredge for the purpose of removing some of the bars which impede navigation at low water stages and by next season when the "C. R. Lamb" will be placed in commission she will be able to land passengers at all points on the Shuswap Lakes and up the North Thompson River for over a hundred miles and convey produce from many fertile farms.

headquarters for the Gold Commissioner, the Mining Recorder, Registrar of the Supreme and County Courts, the Assessor and Collector, the Sheriff and the Provincial Police. In the same building are located the Provincial Law Courts where Spring and Fall Assizes and monthly sittings of the County Court are held. The present building has been in use for about fifteen years and has been enlarged from time to time as business increased. It has now outgrown its usefulness and plans are in course of preparation for a modern and commodious building which will cost in the neighborhood of \$75,000. The Land Registry for the County of Yale is located here and in it is transacted the land registration and general statistical work of the district. The Provincial Gaol, a large and convenient building, is located at the southern end of the town and adjoining the Provincial Home for Pioneers. These two imposing looking buildings are kept in a perfect state of neatness which is carried out in the tastefully arranged grounds, spacious lawns and well kept gardens and orchard. Together they form one of the show places of the city. Although it is not in the strict sense of the word a provincial institution, the Royal Inland Hospital receives such an amount of financial support from the Government that it may well be considered under the same head. The Hospital has been recently remodelled and is now one of the best in the province. It provides accommodation for about forty patients at one time and has comfortable quarters for the nursing staff and house help. The institution has modern equipment for the treatment of medical and surgical cases. A thoroughly efficient medical and nursing staff is in constant attendance. An isolation hospital maintained by the city is under control of the Medical Health Officer.

The Public School and High School are both located in a new and thoroughly modern building which affords ample accommodation for the scholars and up to date equipment for teaching purposes. The list of public buildings closes with the city hall, in which is located the office of the city clerk and treasurer, the police quarters and the city lock-up, as well as the council chamber where the aldermen meet for the conduct of city business, and where also the B. C. Inland Board of Trade holds its meetings. All the institutions enumerated are far above the standard of those usually found in a town of 10,000 population.

Churches and Schools

KAMLOOPS as a long established town has several denominations represented. The Church of England, the Presbyterian, the Roman Catholic, the Methodist and the Baptist denominations have all erected places of worship in the city and all have large congregations and regular services. Besides the public and high schools there are two high class public boarding schools. St. Ann's Convent is ably

FOR

Hardware, Stoves, Tinware, Graniteware and General House Furnishings, Paints, Oils, Glass, etc., Farm Machinery, Wagons, Buggies and Democarts and all Kinds of Vehicles. You can't beat Dalgleish's, you can get what you want and at prices in your favor.

N. S. DALGLEISH

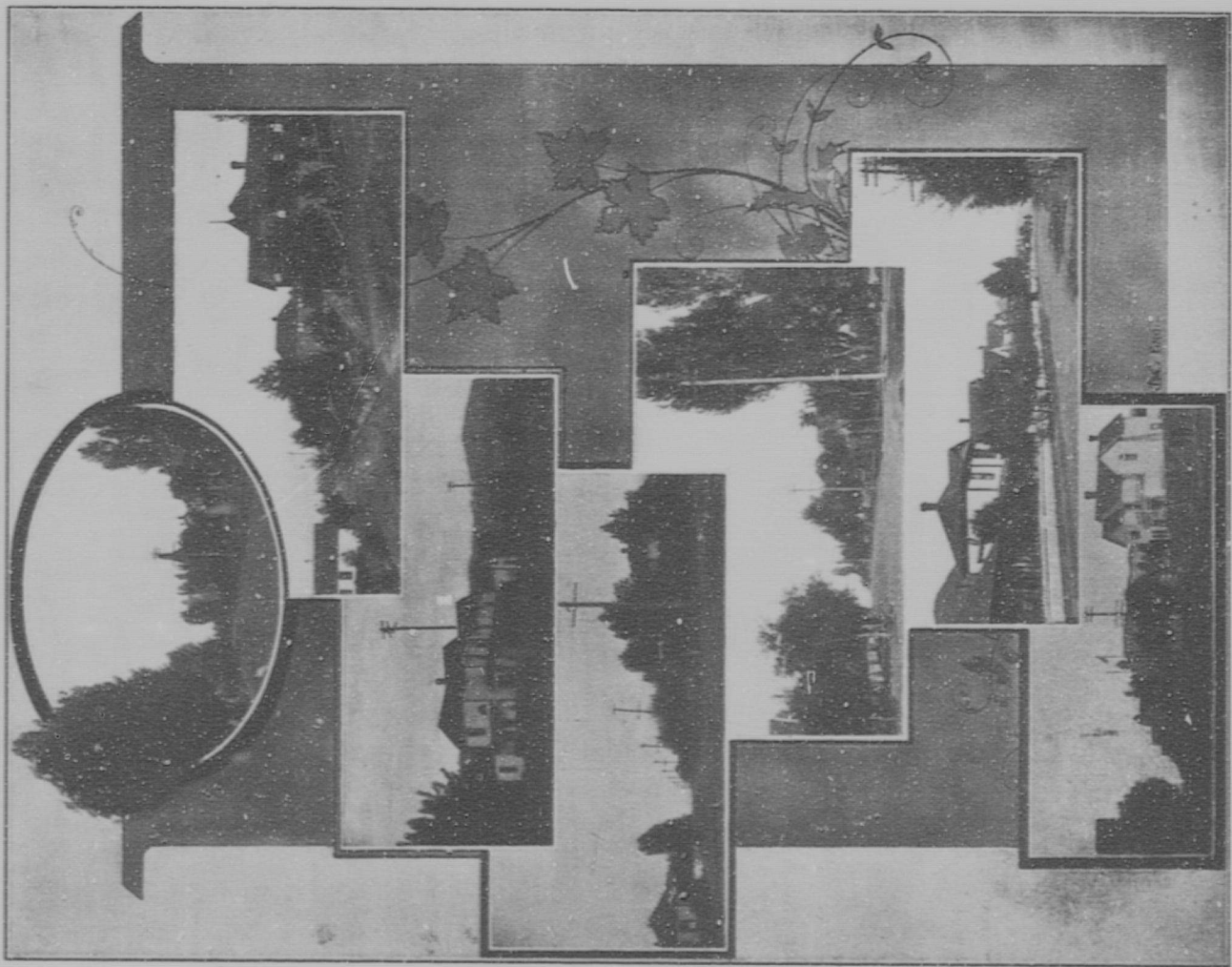
THE HARDWARE MERCHANT



QUEEN'S HOTEL

Ed. Maloney, Prop.

Headquarters for Prospectors and Miners



SH

sters

The Inland Cigar Factory

THE confirmed smoker would in very many cases be tempted to relinquish his devotion to "My Lady Nicotine" if he were to see the unsanitary, ill-ventilated quarters in which many of the so called choice brands of cigars are made, but the most fastidious smoker on going through the cool, light, airy rooms of the Inland Cigar Manufacturing Company's premises at Kamloops would pin his faith to the leading brands manufactured by this enterprising Company. The building was erected solely for the purposes of the Company and with a view of obtaining cleanliness, airiness and ample room for the workman who are engaged by them and the result is a credit to the business. The careful selection of the stock used in their various brands and a strict attention to the details which experience has shown to be necessary to the maintenance of high quality have placed Kamloops cigars to the forefront all through the interior of British



Columbia and discriminating smokers who have once used an Interior or La Morena will always call for them again. The business started in a small way but year by year has increased under the able management of Mr. Borthwick until the capacity of the factory is often taxed to the utmost to fill the demand for the goods turned out. The average number of skilled cigar makers at work in the factory is twenty and at present there are more than this number engaged. The stock used is the choicest grade of Havana and Sumatra, selected with care and kept in proper condition until ready for rolling into the well known brands, Interior and La Morena which have been the Company's leaders ever since they began business in Kamloops.



STEVENS & ALLAN
 Groceries, Flour and Feed, Fruits
 and Vegetables
 Corner Main St. and Third Ave.

WE have the largest and best stock of groceries in the interior and we can fill your valued orders for anything in our line in quantities large or small.

We solicit a call from you and will appreciate your order.

conducted an religious and distant parts. The Convent Sisters have a building. M has since 188 school. Boy desirous of a painting. T school bespe Beattie and I

KAMLOO

hold of The various these organi be mentione Order of Odd Order of For England Ber ra: way orga Federation of usual affiliate city has a we the Kamloop for the young equipped gy into a public operatic wor reading room parties have conducted in and commod various outd of sport. A might be me hockey club and a p considerable year at Ad province. Club and the Agricultural

conducted and provides a good home for non resident pupils and religious and secular education for all. Many pupils come from distant parts of the province to receive their education within its walls. The Convent building has been outgrown by the school and the Sisters have now in contemplation the erection of a new and larger building. Miss Beattie, a graduate of the Royal University of Ireland, has since 1892 conducted with marked success a day and boarding school. Boys under twelve years of age are admitted as well as girls desirous of a higher education or instruction in music, drawing or painting. The remarkably good showing made by the pupils of this school bespeak the careful attention received at the hands of Miss Beattie and her capable staff.

Social and Recreative

KAMLOOPS holds out all the inducements which any town can hold out for the social and physical well being of its residents. The various secret and benefit societies are well represented and among those organizations which have a large and active membership may be mentioned Ancient Free and Accepted Masons, the Independent Order of Oddfellows, the Independent Order of Foresters, the Ancient Order of Foresters, the Knights of Pythias, the L. O. L., the Sons of England Benefit Society. In addition to these there are the numerous railway organizations and trades unions, and a branch of the Western Federation of Miners. The different denominational bodies have the usual affiliated societies working in connection with the churches. The city has a well conducted club for the older men and their friends, and the Kamloops Musical and Athletic Association serves a like purpose for the younger men. The latter organization has a large and well equipped gymnasium which, as occasion requires, can be converted into a public hall, with a good stage, which is used for theatrical and operatic work, for concerts, meetings and balls. There is also a good reading room for use of members of the association. Both political parties have organizations in town and the Conservative Club is conducted in connection with the district association. They have large and commodious quarters in the Noble Block. The devotees of the various outdoor games will find kindred spirits here in several branches of sport. Amongst the clubs having in view the interests of sport might be mentioned the Lacrosse Club; baseball and football clubs; hockey clubs, both ice and ground hockey having devotees; a tennis club and a polo club. As is natural in any horse raising country considerable interest is taken in racing and two meets are held in each year at Alexandra Park where is situated the best track in the province. The spring meet is held under the auspices of the Polo Club and the autumn one under the direction of the Kamloops District Agricultural Association.

E. T. Blair

WHO has been for many years associated with the most progressive and energetic business men of Kamloops, has since he branched out for himself gained the benefit of the wide connection secured through his former connections. Now his establishment is second to none doing business in his line, and the large, well assorted stock is good evidence of the extent of the trade done by him. In all the lines pertaining to a well appointed gentleman's outfittng store, every article which comfort or fashion dictates can be found on his shelves



or in the different departments. High class clothing he makes a specialty of and the celebrated 20th Century brand is the leader in this line at Blair's. Other lines are carried as the trade necessitates. He also makes a specialty of Standfield's Pure U. S. shrinkable Nova Scotia Woolen Underwear, and in all sizes and weights this line is kept complete. Hosiery, neckwear and shirts for all purposes, and at all prices, collars, cuffs, hats and caps, boots and shoes of all kinds and all at prices to suit will be found in this up to date furnishing stock.

Sport with Rod and Gun

TO MANY of these who are contemplating a change of residence an important factor in the choice is the opportunities which the new home may offer for sport with rod, shot gun or rifle. On this will often depend the choice when two or more districts are under consideration and in this respect the Kamloops District can compare favorably with all parts of British Columbia and is superior to most. In no other



part of the province can so varied an assortment of game, furred, finned or feathered, be secured without an undue expenditure of time and money. The wide choice of varieties, the accessibility of the different shooting grounds and fishing waters, the magnificent weather which prevails throughout the shooting season and the picturesque surroundings of mountain wood and water combine to make the

Kamloops District an ideal one for a sportsman's outing and in no direction, nor in any quest need he return without a satisfactory bag. If the enquirer is an ardent disciple of Isaac Walton and would test his skill with fly or bait, he may take his choice of many waters. All along the Thompson or the North Thompson Rivers and in every tributary stream, trout, strong and game to the last degree, may be brought to grass. The several kinds of trout, with one exception, are said to be identical in species, differing only in size and colour in the different waters. The one distinct species, the best known and most sought for of the game fish of the Interior, is the Silver trout (*Salmo Kamloopis*), the strongest, gamest fish that ever tried an angler's tackle. This trout may be taken in all the local waters but is most plentiful in the Thompson River. The wing shot can obtain good sport in his line with as little trouble as does his brother angler. Within a day's ride of the city in any direction, a good bag may always be secured with the shotgun, in season. Wild fowl of all kinds and sizes, ranging from the great Whistling swan to the fast flying little teal, are plentiful in all the lakes which lie scattered over the wind swept, bunch grass ranges. Of geese, there are two varieties, the Canada Goose and the American White Fronted Goose, the former being very abundant and the latter fairly so at certain seasons. Mallard, Widgeon, Teal, Pintail, Spoonbill and Gadwall are the most abundant of the true ducks, but many of the sea ducks are also to be found. For those who prefer upland shooting there are plenty of grouse, the family being well represented all through the district. The Canada Ruffed Grouse and the Blue Grouse are particularly abundant, and the Columbian Sharp-tailed Grouse or Prairie Chicken is becoming more plentiful every season. The big game hunter too has a good variety to choose from. Grizzly Bear and Black Bear are both plentiful in several parts of the district and the sportsman in search of the pelt of either may be sure of a shot without having to go far. The Mule Deer is plentiful and good deer shooting may be obtained in any direction from the city after not more than a few hours drive. The deer in the open park, like ranges of the dry belt, is at his very best, and will always afford excellent sport and good heads. For caribou the sportsman must go farther afield but in the country about Adams Lake and north of Shuswap Lake and in the valley of the North Thompson about Clearwater Radifer Caribou ranges in immense herds. Mountain Goat are plentiful too in the Adams Lake country but sheep are rather scarce in this district, although there are points within reasonable distance where the sportsman may secure this, the most prized of mountain trophies.

FRUITLAND

Fruitland Consists of 6000 Acres Has an Abundant Supply of Water

Of uniformly level land bordering the Thompson and North Thompson Rivers, opposite the City of Kamloops, with which it is connected by a magnificent four span bridge 1000 feet in length, erected by the Provincial Government at a cost of \$40,000.

With the expenditure of \$70,000, water has been brought on to the property by means of a canal, flumes and laterals providing an ample supply to all the irrigatable lands.

SOIL

The soil is a rich alluvial deposit, varying in texture from a light sandy clay loam, and of a very fertile character when irrigated.

FOR FRUIT

The land is adapted to the growing of farm crops and fruits, and is also highly suitable for poultry raising and dairying.

PRICES

Fruitland has been surveyed and laid out into lots from five to two hundred acres in size, at prices ranging from \$75 to \$150 per acre, including water rights.

TERMS

Plots can be purchased on the instalment plan by the cash payment of one-sixth of the price and the balance in five annual installments at six per cent. interest.

For maps, prospectus and further information write to

Canadian Real Properties, Limited

163-4 Dashwood House or Messrs Strutt & Nash

New Broad Street, London, Eng.

Kamloops, B. C.

The Dominion Hotel

A First Class Hotel in Every Particular.

W. H. Ford, Proprietor

A WELL run hotel under good management is a vital requisite in a progressive town and that Kamloops has for a long time been furnished with by W. H. Ford, the proprietor of the above hostelry.



Everything about the Dominion is arranged so that its guests receive every accommodation and all comforts to be found in the leading houses of larger towns. Special attention is given to the cuisine and the patrons of the Dominion will always find the table supplied with all delicacies in season, while the bar is kept furnished with the best of wines, liquors and cigars, the whole being presided over by competent and courteous help under the direction of Mr. Ford himself whose long experience has made him a competent judge of the requirements of the travelling public.

Ramsay & Philip

— Limited —

Kamloops Greatest Stores

Dry Goods



Staple and Fancy
Dress Goods
Millinery
Men's Furnishings
Boots and Shoes

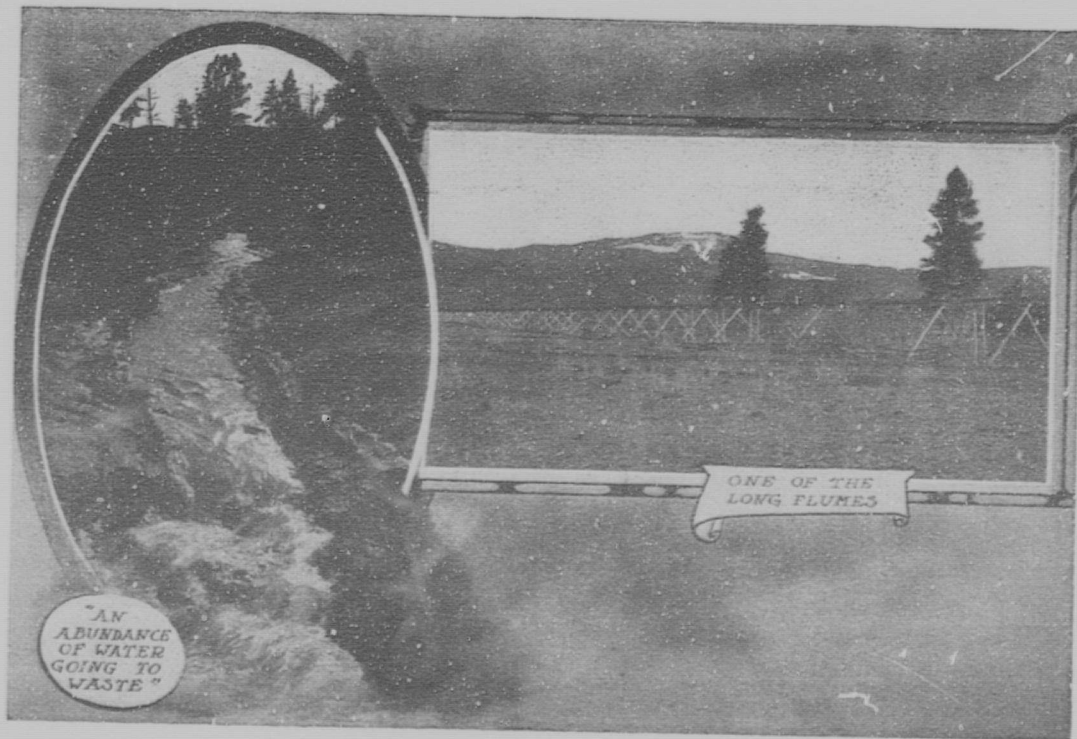
Groceries



Staple and Fancy
Provisions
Flour and Feed
Produce

Prompt attention given to
mail orders from any part
of the Interior

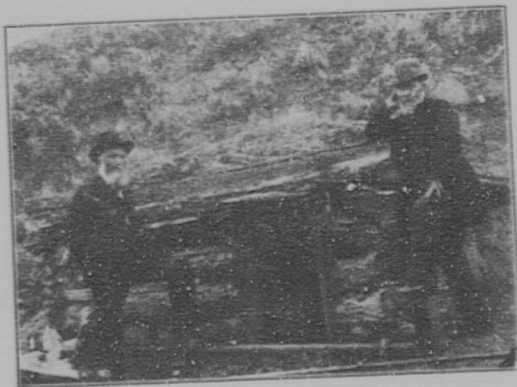
"Sunnyside" A New Sub-division in the South Thompson River Valley near Kamloops.
Choice Lands for Fruit Growing.



\$100 to \$200 per acre. Easy Terms. Water guaranteed.
For information, Maps, Pamphlets, etc., apply J. T. Robinson, Manager, Kamloops, B. C.



COLEBROOKE RANCHE



FIRST HOUSE IN KAMLOOPS

D. G. MACPHERSON

WILLIAM FORTUNE

England & Son

AFTER twenty-five years in business as bakers and confectioners in the Northwest Territories Messrs. England & Son have chosen Kamloops as the location for a larger and more extended business as family grocers. They purchased on their arrival in the city an old established business which for some years had maintained a good name as a high class purveying establishment where a purchaser would find any line called for and each one represented by the best obtainable of its kind. Staple goods are always fresh and fancy goods always the best and choicest. Besides the grocery department of their business England & Son carry a large line of glass and crockery, plain and fancy, stock grades or expensive grades plain or decorated and at prices to suit all purses. Since taking hold of the store they have kept well to the front the reputation established by their predecessors of being "the strictly high class grocers of the city." The firm, like all other up to date grocers, has several specialties and their teas and coffees are not to be surpassed by those to be found anywhere else in the province. The store is fitted up in a manner which displays to the best advantage the various commodities and the plate glass refrigerators used for the proper storage of dairy produce are in themselves an indication of the care taken to keep everything in the choicest possible condition.

Norris Bros.

WHEN commencing business in Kamloops had very hard opposition to compete with. An old established concern with a large stock, and an experienced harness and saddlery man with capital at its head must have looked dangerous to the young men who opened up in opposition to the older concern. Pluck, enterprise and capable business management have however won out and the older concern, a modern and well equipped saddlery and harness shop, has now the name of Norris Bros. over its front. As the city is the centre of a large district where harness is required for many different purposes they are compelled to carry a more varied stock than they would in some other cities. Harness they have for freighting teams, for farm teams, for road teams, and for carriage teams. Harness for the roadster and for the cob, for the cart horse or the show horse, all of the best, finished as their customers desire it and consisting of only the best stock. Saddles for the stockmen or lighter ones for range riding. English saddles for ordinary use or for polo or racing, side saddles or astride saddles for ladies. All of their saddles, like the harness, are built of nothing but the best materials and by skilled workmen. Saddlery hardware, pack saddles, aperajoes, alforfas, lariats, quirts, whips, bits, spurs or "chaps" can all be found to suit each individual and the buyer will go far in the west before he will find as large and varied stock as is carried by Norris Bros.

Climatic Advantages

ONE of the most valuable assets which Kamloops and its tributary districts possess is the climate. It is not a merchantable commodity and for that reason is perhaps rarely considered by those who might by a little effort and outlay, properly directed, turn the days of sunshine into golden dollars. Publicity is the "open sesame" to the treasure which our clear, dry days have in store. The wealthy valetudinarian is here told of our climatic advantages and the attractiveness of the district as a place of residence so that he can ascertain for himself the truth of the statement that British Columbia's "dry belt" and Kamloops, in particular, stands supreme as a health resort. Spring opens early and the long summer days which follow throughout the summer stay with us far into the autumn. Days of clear sky,

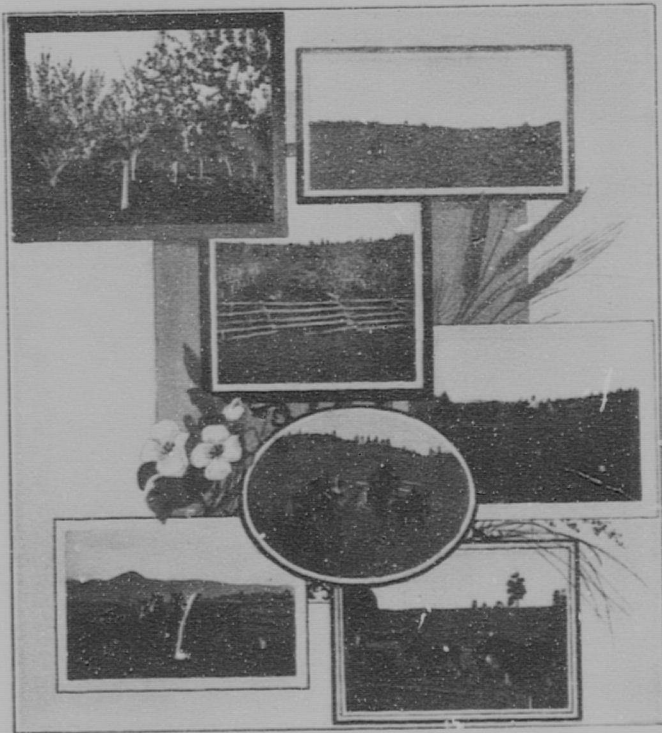
which swept over the north-west coast, and did not reach the interior of the province at all. The average relative humidity is about 80 in winter and 60 in summer and the average pressure of vapor is about 190 in winter and 350 in summer covering a similar period. The warmest days in summer are usually experienced in July when the thermometer will rise upon a few occasions to 97 deg. Far. and the coldest in winter the thermometer will fall for a few days to about 10 deg. below zero. The mean temperature for the coldest months in winter is about 28 deg. above, and in summer about 65 deg. above. There is a very small fall of dew in this locality as will be seen by the pressure of vapor. It has been the pleasure of the writer during many summers here to spend a good portion of the summer months, by sleeping outside, with nothing but the starry heavens for a roof, and

	DECEMBER			JANUARY			FEBRUARY			MARCH		
	Max	Min	Mean	Max	Min	Mean	Max	Min	Mean	Max	Min	Mean
1895-6	52.5	0.0	29.7	52.0	-6.2	14.3	64.0	10.5	35.7	69.0	4.8	35.6
1896-7	52.8	14.0	33.6	48.8	-6.0	26.4	44.6	11.5	28.9	54.8	-2.0	28.3
1897-8	48.1	0.0	25.3	37.0	21.0	22.7	50.4	10.0	33.4	53.0	9.0	35.6
1898-9	56.3	4.5	24.9	49.0	-13.2	24.9	53.0	-10.4	21.9	56.8	11.0	34.0
1899-0	55.8	0.6	32.0	50.7	15.4	33.8	53.3	-10.1	27.5	64.0	16.0	42.2
1900-1	52.0	11.8	37.4	50.7	-15.5	22.8	63.1	0.5	25.7	68.1	20.0	42.6
1901-2	50.5	10.2	31.2	51.5	-8.2	26.8	52.5	-10.7	34.3	60.8	10.0	39.7
1902-3	45.6	2.2	24.5	47.6	4.8	27.0	43.4	5.0	25.7	57.6	-4.2	29.8
1903-4	55.2	20.0	31.7	55.5	-0.5	26.1	42.8	-12.5	21.5	50.8	4.9	31.7
1904-5	49.9	11.3	30.8	45.7	-4.0	26.1	56.8	-8.2	15.6	66.7	27.2	44.8
1905-6	44.4	3.4	29.6	53.7	0.9	27.3	50.5	4.1	33.7	65.0	6.7	38.0
1906-7	51.9	3.6	28.5									

bright sun, and dry, crisp air are a feature of all the seasons, and the winters are as a rule as pleasant as the summer in this respect. The snow fall is slight and the temperature never too low for comfort and health. The climate of the district is dry the entire year, the average rainfall for the year scarcely ever exceeding one and one-quarter inches per month. The barometric pressure averages about 28.750 inches at the altitude of 1176 feet above sea level, the elevation of the present observatory. The maximum pressure height was reached on November 17, 1903, when the pressure registered 29.524, and the minimum pressure was reached on February 27, 1904, the registration being 27.940. These instances were of exceptional character, and have only occurred once in the knowledge of the writer during a period of four years, the latter being the occasion of a terrific storm at sea

I have never yet suffered any inconvenience by so doing. In connection with the winter months, I might mention that there are generally two cold snaps in the winter, when the thermometer falls to below zero. These two may appear in the latter part of November and the latter part of January, or in December and February. These cold seasons may last a week or ten days, but usually not longer, and seldom accompanied with any wind. The average wind velocity varies somewhat, but rarely exceeds six miles per hour. A great deal of the time the wind velocity is 0 to 5 miles per hour.

The table inserted in this page shows the actual records of the meteorological bureau taken during the time that the Kamloops branch has been in operation: a period of twelve years.

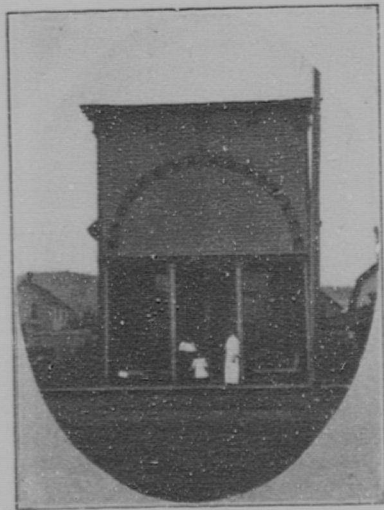


Colebrooke Ranch

SITUATE about three and a half miles from the City of Kamloops is one of the prettiest locations for a stock ranch in this part of the province and the well kept buildings and fences, the well tilled fields and the clean, well supplied pasture lands appertaining to the ranch do much to add to its attractiveness. The ranch contains some 4,500 acres of arable and pasture land, of which some 400 acres are now under cultivation. As the ranch owns excellent water rights there is no doubt that it will be ere long snapped up for fruit growing purposes. The George Bros., the present owners of Colebrooke Ranch are engaged in the stock industry making a specialty of high class draught stock and Shorthorn cattle. Their

pure bred Clydesdales are noted prize winners, especially the mares, of which there are a good band of all ages now on the ranche. The stallion, Colebrooke's Pride, heads the horse herd, and he is extremely well suited to get the proper class of colts, active and hardy, for use in this country. The Shorthorn herd is headed by Litleton Hero XVI, a championship bull and sweepstake winner at Calgary. Many of the cows too are well known prize winners and there is always some first class youngsters on hand at Colebrooke.

That the Colebrooke Ranch is in no wise behind the other farms of the Kamloops District as a grain producing farm is easily understood from the fact that the oats shown in one of the accompanying photographs were cut on July 25th of this year and is one of the heaviest yields of the present season anywhere in the district. The land, wherever it has been placed under cultivation has proved to be remarkably prolific, and very large crops of hay and fodder grain are annually produced and the two orchards on the place give abundant evidence of its capabilities as a fruit growing place, although no effort has been made to produce on a commercial scale. Besides the high class breeding stock the George Bros. also do a large business as drovers and through Colebrooke Ranch comes most of the stock used by the Ranchers Supply Co'y which is also controlled by the owners of Colebrooke. This store buys all its stock locally and has proved to be of great benefit to local producers of beef, mutton, veal and pork. The Ranchers Supply Company are purveyors to the Provincial Government besides doing a very large volume of trade with private consumers. Strict attention to the details of buying and marketing in good shape, together with prompt attention to orders have made the Company a favorite place to buy. Besides the staple lines found in all meat markets, poultry, game and fish are all supplied in season.



CIGARS

PIPES

TOBACCO

Brown & Crawford
First Class Shaving Parlors

Next Door to Leland Motel

Large Pool Room in Connection

Four Pool & Two

English Billiard Tables

Jobbing Work Done Estimates Given

ROBERT MCKAY

Builder and Contractor

Kamloops, - - British Columbia

109635

Souvenir Goods

Visitors to Kamloops will find that we have the most complete line of souvenirs in town. These goods are a specialty with us and we provide many articles not to be found elsewhere.

Post Cards, Photos,
Metal and Leather Novelties. etc.

Visitors are always welcome whether purchases are made or not.

The Druggist CLEMENTS and Stationer
KAMLOOPS AND ASHCROFT, B. C.

KAMLOOPS HOUSE

BEST STOCK OF WINES, LIQUORS AND
CIGARS IN THE PROVINCE

P. HEORD, PROPRIETOR

The Quality of Drugs

Is of far greater importance than the price. Our stock of drugs, patent medicines, stationery, photographic and optical goods, shaving supplies and sick room requisites is both large and varied enough to meet the requirements of all. Orders by post attended same day as received.

The Mallery Drug Co., Limited.

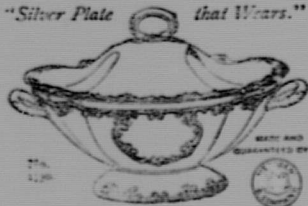
C. P. R. TIME INSPECTORS

WATCH REPAIRING A SPECIALTY

HEADQUARTERS FOR SOUVENIR GOODS.

"Silver Plate that Wears."

A



Wedding Present
FROM
Campbell & Co.

Is Guarantee that the make and quality
of the article is exactly as represented

Our Assortment of

STERLING SILVER, CUT GLASS,
ELECTRO PLATE AND CUTLERY

Is extensive and well selected. Try it.

W. M. CAMPBELL & CO., JEWELERS

We carry one of the Best Selected

Stocks of

Men's Furnishings

IN THE CITY.

Sole Agents for Campbell's fine Tailored Clothing

Geo. A. Slater's Invictus Boots and Shoes

Small Profits and Quick Returns is Our Motto.

F. E. BURNS

Smith Bros. Bookstore

Kamloops, B. C.

Vernon, B. C.

Every Requisite in the Line of Stationery
School Supplies

WRITING TABLETS	PAPETERIES	BLANK BOOKS
ENVELOPES	SCHOOL BLANKS	CREPE PAPERS
TISSUE PAPERS	LETTER FILES	BINDING CASES
	FOUNTAIN PENS	

Agents for : Eastman's Kodaks and Supplies, Moore's Non-Leakable Fountain Pens, Monarch Typewriter, Smith Premier Typewriter.

Does it Pay to Sell Faulty Shoes

Just because it is possible to deceive the eye and because expert knowledge is a rarity in some buyers.

SOME THINK SO

WE DO NOT

We would a thousand times rather see the faulty shoe brought back than have the impression go forth that it is possible to secure inferior quality in this store.

Handsome Shoes for Handsome Women

Walk or ride, it is eminently proper that ladies' foot dress be in keeping with other proportions of her toilet. Feet will get weary; streets will get muddy; wind will blow; people will be curious. Our Oxfords are perfectly adapted to all needs of woman's footwear. They are the great summer shoe. They are not all fad and fashion either. Solid business men and women are wearing Oxford ties. Come in and see how you look in them.

McLean's Shoe Store **KAMLOOPS**
— B. C. —

Kamloops Provincial Agricultural Exhibition and Fall Race Meeting

Splendid Two Days

Horse Races

Log Rolling Contest for
\$75 Purse

Grand Lacrosse Match
Baseball Match
Bucking Contest

Grand Ball on Evening of
September 19th

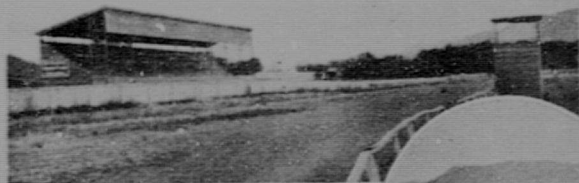
Grand Calithumpian Parade
September 20th

For further particulars, prize
lists and entry forms apply to

G. B. W. NELSON, Sec.

OFFICE—WARD BLOCK

ALEXANDRA PARK
Sept. 19, 20 & 21



KAMLOOPS AGRICULTURAL ASSOCIATION
RACE TRACK & EXHIBITION BUILDINGS



The Thompson River Lumber Co'y

A. RAUMAN, MNGR.

Rough and Dressed Lumber,
Shingles, etc.

We are prepared at all times to make prompt deliveries.
Phone No. 49.

MISS M. SPENCER

PHOTOGRAPHIC ARTIST

KAMLOOPS, B. C.

Subscription \$2 per annum

Largest Circulation in Interior

The Kamloops Standard

A Weekly Newspaper

Devoted to the up-holding of Kamloops and Surrounding District.

Job Printing a Specialty. This Publication was printed on the Standard Presses

FARM LANDS

FRUIT LANDS

RANCH LANDS

CITY AND SUBURBAN

REAL ESTATE

E. V. SHAW

Real Estate, Financial and General
Commission Agent

P. O. BOX 308

KAMLOOPS, B. C.

THE CANADIAN BANK OF COMMERCE

HEAD OFFICE, TORONTO

ESTABLISHED 1867

B. E. WALKER, President
ALEX. LAIRD, General Manager
A. H. IRELAND, Superintendent of
Branches

Paid-up Capital,	\$10,000,000
Rest, - - -	5,000,000
Total Assets, -	113,000,000

Branches throughout Canada, and in the United States and England

A GENERAL BANKING BUSINESS TRANSACTED
COMMERCIAL AND FARMERS' PAPER DISCOUNTED

SAVINGS BANK DEPARTMENT 91

Deposits of \$1 and upwards received; interest allowed at current rates and paid quarterly. The depositor is subject to no delay whatever in the withdrawal of the whole or any portion of the deposit.

C W. HALLAMORE, - Manager, Kamloops, B. C.