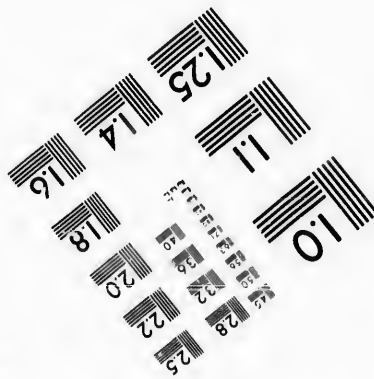
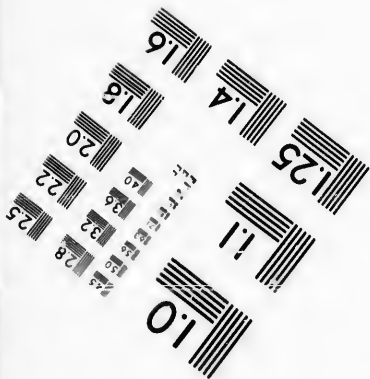
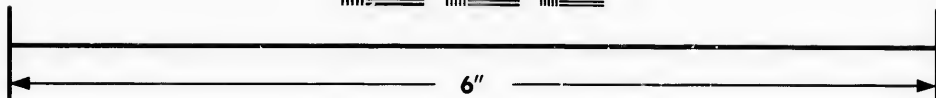
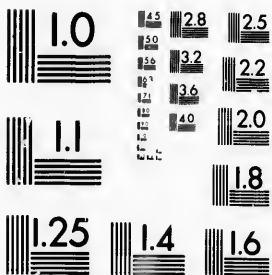


**IMAGE EVALUATION
TEST TARGET (MT-3)**



**Photographic
Sciences
Corporation**

23 WEST MAIN STREET
WEBSTER, N.Y. 14580
(716) 872-4503

15 18 20 22 25
18 20 22 25

**CIHM/ICMH
Microfiche
Series.**

**CIHM/ICMH
Collection de
microfiches.**



Canadian Institute for Historical Microreproductions / Institut canadien de microreproductions historiques

10

© 1987

Technical and Bibliographic Notes/Notes techniques et bibliographiques

The Institute has attempted to obtain the best original copy available for filming. Features of this copy which may be bibliographically unique, which may alter any of the images in the reproduction, or which may significantly change the usual method of filming, are checked below.

L'Institut a microfilmé le meilleur exemplaire qu'il lui a été possible de se procurer. Les détails de cet exemplaire qui sont peut-être uniques du point de vue bibliographique, qui peuvent modifier une image reproduite, ou qui peuvent exiger une modification dans la méthode normale de filmage sont indiqués ci-dessous.

- Coloured covers/
Couverture de couleur
- Covers damaged/
Couverture endommagée
- Covers restored and/or laminated/
Couverture restaurée et/ou pelliculée
- Cover title missing/
Le titre de couverture manque
- Coloured maps/
Cartes géographiques en couleur
- Coloured ink (i.e. other than blue or black)/
Encre de couleur (i.e. autre que bleue ou noire)
- Coloured plates and/or illustrations/
Planches et/ou illustrations en couleur
- Bound with other material/
Relié avec d'autres documents
- Tight binding may cause shadows or distortion
along interior margin/
La reliure serrée peut causer de l'ombre ou de la
distorsion le long de la marge intérieure
- Blank leaves added during restoration may
appear within the text. Whenever possible, these
have been omitted from filming/
Il se peut que certaines pages blanches ajoutées
lors d'une restauration apparaissent dans le texte,
mais, lorsque cela était possible, ces pages n'ont
pas été filmées.
- Additional comments:/
Commentaires supplémentaires:

- Coloured pages/
Pages de couleur
- Pages damaged/
Pages endommagées
- Pages restored and/or laminated/
Pages restaurées et/ou pelliculées
- Pages discoloured, stained or foxed/
Pages décolorées, tachetées ou piquées
- Pages detached/
Pages détachées
- Showthrough/
Transparence
- Quality of print varies/
Qualité inégale de l'impression
- Includes supplementary material/
Comprend du matériel supplémentaire
- Only edition available/
Seule édition disponible
- Pages wholly or partially obscured by errata
slips, tissues, etc., have been refilmed to
ensure the best possible image/
Les pages totalement ou partiellement
obscurcies par un feuillet d'errata, une pelure,
etc., ont été filmées à nouveau de façon à
obtenir la meilleure image possible.

This item is filmed at the reduction ratio checked below/
Ce document est filmé au taux de réduction indiqué ci-dessous.

10X	12X	14X	16X	18X	20X	22X	24X	26X	28X	30X	32X
					✓						

The copy filmed here has been reproduced thanks to the generosity of:

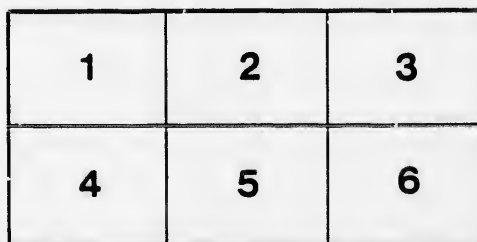
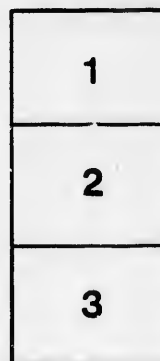
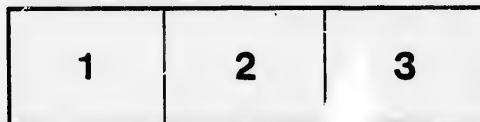
D. B. Weldon Library
University of Western Ontario
(Regional History Room)

The images appearing here are the best quality possible considering the condition and legibility of the original copy and in keeping with the filming contract specifications.

Original copies in printed paper covers are filmed beginning with the front cover and ending on the last page with a printed or illustrated impression, or the back cover when appropriate. All other original copies are filmed beginning on the first page with a printed or illustrated impression, and ending on the last page with a printed or illustrated impression.

The last recorded frame on each microfiche shall contain the symbol \rightarrow (meaning "CONTINUED"), or the symbol ∇ (meaning "END"), whichever applies.

Maps, plates, charts, etc., may be filmed at different reduction ratios. Those too large to be entirely included in one exposure are filmed beginning in the upper left hand corner, left to right and top to bottom, as many frames as required. The following diagrams illustrate the method:



L'exemplaire filmé fut reproduit grâce à la générosité de:

D. B. Weldon Library
University of Western Ontario
(Regional History Room)

Les images suivantes ont été reproduites avec le plus grand soin, compte tenu de la condition et de la netteté de l'exemplaire filmé, et en conformité avec les conditions du contrat de filmage.

Les exemplaires originaux dont la couverture en papier est imprimée sont filmés en commençant par le premier plat et en terminant soit par la dernière page qui comporte une empreinte d'impression ou d'illustration, soit par le second plat, selon le cas. Tous les autres exemplaires originaux sont filmés en commençant par la première page qui comporte une empreinte d'impression ou d'illustration et en terminant par la dernière page qui comporte une telle empreinte.

Un des symboles suivants apparaîtra sur la dernière image de chaque microfiche, selon le cas: le symbole \rightarrow signifie "A SUIVRE", le symbole ∇ signifie "FIN".

Les cartes, planches, tableaux, etc., peuvent être filmés à des taux de réduction différents. Lorsque le document est trop grand pour être reproduit en un seul cliché, il est filmé à partir de l'angle supérieur gauche, de gauche à droite, et de haut en bas, en prenant le nombre d'images nécessaire. Les diagrammes suivants illustrent la méthode.

*Revised List for 1887
Clerk of the Town*

LIST OF VOTERS

By
✓

FOR THE

TOWN OF STRATHROY

FOR THE

YEAR 1887.

113

STRATHROY :

Printed at THE AGE Publishing House, Front Street.
1887.

SCHEDULE OF POST OFFICES.

- | | |
|---------------|------------------|
| 1. STRATHROY. | 14. BRANTFORD. |
| 2. ADELAIDE. | 15. TORONTO. |
| 4. LONDON. | 16. SARNIA. |
| 5. PETROLIA. | 18. WATFORD. |
| 6. EXETER. | 20. OIL SPRINGS. |
| 8. INGERSOLL. | 21. CHATHAM. |
| 9. NEWBURY. | 22. HAMILTON. |
| 10. LOBO. | 23. WOODSTOCK. |
| 11. GLENCOE. | 24. WATERLOO. |
| 12. ARKONA. | |

The following is a Key to the Abbreviations used throughout the Entire List of Voters, viz.:

- | | | |
|------------------------|---------|--------------------------|
| 1. McK & McR Sy means, | - - - | McKellar & McRae Survey. |
| 2. J & W Sy | " - - - | Johnston & Winlow " |
| 3. S Sy | " - - - | Salsbury " |
| 4. B Sy | " - - - | Blackburn " |
| 5. S & K Sy | " - - - | Street & Keefer " |
| 6. A & K Sy | " - - - | Althouse & Kittredge " |
| 7. R & G Sy | " - - - | Reid & Gregory " |
| 8. K Sy | " - - - | Kittredge " |
| 9. C Sy | " - - - | Crealey " |
| 10. A Sy | " - - - | Armstrong " |
| 11. T & L Co. Sy | " - - - | Trust and Loan Co. " |
| 12. R Sy | " - - - | Rapley " |

Com
FAE
R
N
J
J 5
J 5
J 12
J 13
J 13
J 13
J 15
J 15
J 15
J 15
J 17
J 17
J 17
J 19
J 212
J 219
J 220
J 223
J 224
J 225
J 227
J 239
J 241
J 570
J 260
J 263
J 271
J 272

VOTERS' LIST FOR 1887, TOWN ❖ OF ❖ STRATHROY.

Polling Sub-Division No. 1,

Comprising all that part of the Town lying West of McKellar and Richmond Streets, and South of the road allowance between 4th and 5th Concessions of Adelaide. Polling place, Maitland Street School House.

PART I.—Persons entitled to Vote at BOTH Municipal Elections and Elections to the Legislative Assembly.

Roll No.	NAME.	Concession or Street.	No. of Lot or Part Lot.	Other Description.	P.O.
J 4	Armstrong, W H.	5	pt 21	F H.	1
J 54	Brady, Albert L	McK and McR sy	2	T H.	1
J 56	Bateman, T H.	S Albert.	pt 25	T H.	1
J 122	Campbell, Ed	A sy	25, 26	F H.	1
J 130	Calcut, John	A sy	22	T H.	1
J 131	Clarke, Gilbert	W McKellar	3, 4	F H.	1
J 130	Calcut, John W	A sy	22	F H.	1
J 151	Copeland, James	con 5	pt N W ¼ 20	F H.	1
J 152	Cameron, James	S Albert.	5	F H.	1
J 153	Cain, William	Corneil sy	5	T H.	1
J 156	Campbell, Wm C.	S Albert.	part 25	T H.	1
J 174	Cleverdon, L	J & W sy	45 to 48	F H.	1
J 175	Carson, Joseph S.	con 5	pt 20	F H.	1
J 193	Cameron, John	S Albert.	20, 21, 22	T H.	1
J 212	Degroat, Harvey	W Milner	47	F H.	1
J 219	Dalton, Dukes	W Milner	41, 42	F H.	1
J 220	Dalton, John	W Milner	pts 8, 9	F H.	1
J 223	Deavitt, Alex S	W McKellar	9, 10	T H.	1
J 224	Dell, Hiram	J and W sy	33	O H.	1
J 225	Davis, David	Young sy	6, 7, 8, 9	F H.	1
J 227	Degroat, Charles A	S Albert.	24	T H.	1
J 239	Drynan, William	E Oxford	18	F H.	1
J 241	Dickenson, R	E Oxford	16	F H.	1
J 570	Dawson, Wm	S Albert.	3	F	1
J 260	Ellico, Charles	con 10	pt 11	F H.	1
J 263	Ewer, Wm H	N Burns	1 and pt 2	F H.	1
J 271	Evans, David	S Albert.	4	T H.	1
J 272	Evans, Frank	con 5	pt 21	T H.	1

POLLING SUB-DIVISION No. 1.

Roll No.	NAME.	Concession or Street.	No. of Lot or Part Lot.	Other Description.	P.O.	Roll No.
J 297	Ferguson, David.....	W McKellar.....	8.....	T H.....	1	J 636
J 302	Folinsbee, John.....	Corneil sy.....	pt 7.....	T H.....	1	J 644
J 305	Fullerton, James.....	S Albert.....	1.....	F H.....	1	J 646
J 306	Ferguson, Wm.....	W Oxford.....	8.....	T H.....	1	J 663
J 307	Frank, Zacharius.....	S Albert.....	pt 25.....	T H.....	1	
J 292	Frank, Solomon.....	J and W sy.....	64 to 68.....	F H.....	1	
						J 707
J 330	Guille, Nicholas.....	S and K sy.....	1 of 10.....	T H.....	1	J 712
J 331	Gilley, John F.....	S Metcalfe.....	7.....	T H.....	1	J 713
J 332	Gordon, George.....	W McKellar.....	1, 2.....	T H.....	1	J 714
J 340	Gilzean, J T H.....	con 10.....	pt 10.....	F.....	1	
J 340	Gilzean, George D.....	con 10.....	pt 10.....	T.....	1	
J 343	Goodwin, A.....	W Oxford.....	pt 6, 7.....	F H.....	1	J 722
J 354	Geddes, Jas R.....	E Oxford.....	pt 19.....	T H.....	1	J 723
J 303	Going, C C.....	E Oxford.....	pt 19.....	I H.....	1	J 725
J 368	Gerrie, Robert.....	S Albert.....	pt 25.....	T H.....	1	
						J 749
J 394	Fagarty, Ed.....	W McKellar.....	2.....	T H.....	1	
J 406	Harker, Joseph.....	E Milner.....	24, 25.....	F H.....	1	
J 407	Hodgson, John.....	J and W sy.....	29.....	F H.....	1	J 780
J 408	Hinchcliffe, Geo.....	A sy.....	1, 2, 3, 4.....	F H.....	1	J 986
J 412	Humble, Thos M.....	E Oxford.....	pt 17.....	T H.....	1	J 787
J 413	Hoagg, Wm A.....	S Albert.....	pt 45.....	T H.....	1	J 800
J 442	Hungerford, B.....	E Oxford.....	pt 19.....	T H.....	1	J 812
J 414	Hungerford, Samuel G.....			Income.....	1	J 816
J 456	Henderson, Greg.....	Corneil sy.....	2.....	F II.....	1	J 818
						J 841
J 460	Ingrouville, Stephen.....	A sy.....	7, 8, 9, 10.....	F H.....	1	J 846
J 478	James, John.....	S Metcalfe.....	pt 5.....	T H.....	1	J 847
						J 849
J 494	Kettlewell, R.....	S Burns.....	2, 3, 4, 5.....	F H.....	1	J 859
J 495	Kerr, Robert.....	E Milner.....	21, 22, 23.....	T H.....	1	J 861
J 496	Koppleberger, A.....	S Metcalfe.....	pt 9.....	F H.....	1	J 862
						J 863
J 510	Lindsay, John.....	E Oak Avenue.....	13, 14.....	F H.....	1	J 874
J 571	Lindsay, Geo.....	E Oak Avenue.....	20.....	F H.....	1	J 875
J 512	Lighthouse, Geo.....	E Milner.....	31.....	F H.....	1	J 876
J 521	Leitch, Alex L.....	W McKellar.....	9.....	F H.....	1	J 891
J 522	Lighthouse, L W.....	J and W sy.....	40, 41, 42.....	F H.....	1	
J 523	Lenfestey, James.....	J and W sy.....	54, pt 53.....	F H.....	1	J 927
J 534	Laird, William P.....	Corneil sy.....	pt 7.....	T H.....	1	J 928
						J 972
J 553	Murphy, Robert.....	con 10.....	pt 10.....	F H.....	1	J 973
J 554	Martyn, Samuel.....	S Metcalfe.....	pt 8, 9.....	F H.....	1	J 999
J 555	Mills, John.....	Hyman sy.....	2.....	O H.....	1	J 999
J 566	Murphy, Daniel.....	N Burns.....	W hf 2, etc.....	F H.....	1	J 980
J 567	Maxwell, Wallace E.....	con 5.....	pt 21.....	T H.....	1	J 995
J 570	Munro, William.....	S Albert.....	3.....	T H.....	1	J 997
J 555	Morrow, Thos E.....	J and W sy.....	56, pt 57.....	T H.....	1	J 998
J 572	Maitland, Edwin.....	W Oxford.....	9, 10, 11.....	T H.....	1	J1018
J 573	Maitland, Herbert E.....	W Oxford.....	9, 10, 11.....	Income.....	1	
J 581	Meek, Wm H.....	S Albert.....	2.....	F H.....	1	
J 586	Murray, W H.....	J and W sy.....	4, 5, 6, 7.....	F H.....	1	J1026

POLLING SUB-DIVISION No. 1.

3

Roll No.	NAME.	Cession or Street.	No. of Lot or Part Lot.	Other Description.	P.O.
J 636	McDade, Wm	W McKellar	2	F H	1
J 644	McCoy, Robert	Sydenham place	12	F H	1
J 646	McEwan, George	Corneil sy	3, 4	T H	1
J 663	McDonald, Wm M.	con 5	pt 21	T H	1
J 707	Nicholl, Peter N	5	S W pt 20	F H	1
J 712	Noble, James	W Oxford	block	F H	1
J 713	Noble, Duff C	W Oxford	block	F H	1
J 714	Nichol, Jas E	E Oxford	S hf 17	T H	1
J 722	O'Dwyer, Michael	T and L sy	9	F H	1
J 723	Owens, Henry	E Oak Avenue	5, 6, 7	F H	1
J 725	O'Neil, John H	J and W sy	55, pt 53	O H	1
J 749	Park, Edward	W Milner	pt 1	F H	1
J 780	Richards, Robert	con 5	pt 21	O H	1
J 986	Routledge, Wm	Armstrong sy	18, 19	T H	1
J 787	Robinson, Walter	W McKellar	4, 5	T H	1
J 800	Raymond, John	J and W sy	49	F H	1
J 812	Ray, Samuel	W McKellar	5, 6	F H	1
J 816	Rudd, Jas F	W McKellar	4, 5	T H	1
J 818	Robertson, John	W Oxford	pt 7	F H	1
J 841	Singular, Joseph	T and L sy	S pt 7	T H	1
J 846	Smith, Henry	E Oak Avenue	16, 18, 19	F H	1
J 847	Smith, Henry C	W Oak Avenue	pt 6, 7	T	1
J 849	Steer, George	S Metcalfe	pt 4	F H	1
J 859	Saxton, F B	J and W sy	12, 13, 14	F H	1
J 861	Smith, Wm	J and W sy	39	T H	1
J 862	Shields, John	Hyman sy	pt 1	F H	1
J 863	Still, Jasper	Sydenham place	15	T H	1
J 874	Sinclair, Archie	W McKellar	pts 10, 11	T H	1
J 875	Smith, Wm C	J and W sy	10, 11	T H	1
J 876	Smith, Lewis H	J and W sy	58 to 61	T H	1
J 891	Smith, Jas W	J and W sy	62, 63	F H	1
J 927	Trotham, Wm	W McKellar	16	F H	1
J 928	Tyler, John	E Oak Avenue	23, 24, 25	F H	1
J 972	White, Edward A	W Milner	54 to 60	F H	1
J 973	Walker, Joseph	W Milner	pt park 1	F H	1
J 999	Williams, M	J and W sy	74, 75	O H	1
J 980	Weeks, George	Hyman sy	3 to 5, 15 to 18	F H	1
J 995	Weeks, John	J and W sy	52	O H	1
J 997	Windlow, John	J and W sy	28, 30	F H	1
J 998	Widdis, Robert	con 5	pt 20	F H	1
J1018	Wilson, Hiram	Corneil sy	6	T H	1
J1026	Young, George	4	pt 21	F H	1

POLLING SUB-DIVISION NO. 1.

PART II—Persons entitled to Vote at Municipal Elections ONLY.

Roll No.	NAME.	Concession or Street.	No. of Lot or Part Lot.	Other Description.	P.O.
19	Avery, William	T and L sy	pt 4	F	1
24	Armstrong, J W	Sydenham place	13, 14	F	16
514	Auld, Adam	S Albert	23	F	U S
53	Bigney, Eva	E Milner	29, 30	W T	1
61	Bryans, Margaret	E Oxford	34, 50, 51	W	1
74	Beer, Jacob C	con 10, lot 10	13	F	1
331	Brown, James	S Metcalfe	7	F	2
136	Corneil, Jane	Corneil sy	pt 7	W	1
137	Corneil, John M	J and W sy	69 to 73	F	4
157	Crawford, Isabel	S Albert	pt 25	W	1
214	Cook, James	S Metcalfe	6	F	16
874	Campbell, W A	W McKellar	pt 10, 11	F	6
294	Dyke, Jane	S Metcalfe	6	W	1
224	Doll, Howard	J and W sy	33	F	1
278	Elliott, Win	J and W sy	pt 8 and 9	T	1
278	Elliott, John	J and W sy	pt 8 and 9	F	20
61	Frank, H G	J and W sy	34, 50, 51	F	3
646	Ferguson, James	Corneil sy	3, 4	F	1
876	Fisher, John	W McKellar	4, 5	F	1
294	Follinsbee, Mary A	Corneil sy	pt 7	W	1
317	Fawcett, W F	E Oxford	pt 19	F	1
54	Fletcher, Wm D	McK and McR sy	2	F	1
379	Gunn, John	con 10, pt of 10	9, 10	F	12
875	Hull, W W	J and W sy	10, 11	F	1
421	Humphries, S	T and L Co sy	6	F	1
863	Iverson, Rev J	Sydenham place	15	F	16
501	Kittredge, A H	10 in 10th	3, 4, 11, 12	F	1
513	Livingston, Mary	S Albert	23	W	1
53	Morgan, John	E Milner	30	F	2
495	Moore, W C	W McKellar	7	F	1
1018	McCallum, Ann	Corneil sy	6	W	9
970	McIntosh, John M	J and W sy	35 to 38	F	N Y
227	McIntyre, Hugh	S Albert	21	F	10
720	Nugent, Edmund	J and W sy	76 to 80	F	U S
773	Pearce, Jane	Corneil sy	pt 1	T H	1
733	Pincombe, R	Hyman sy	6 to 14	T	1
771	Pullen, Geo	Hyman sy	pt 1	F	2

Roll No. 861
567
830
841
858
860
858
906
297
412
680
4
270
302
306
PART
81
154
802
213
226
261
264
443
472
711
748
781
782
801
996

POLLING SUB-DIVISION No. 1.

5

Roll No.	NAME.	Concession or Street.	No. of Lot or Part Lot.	Other Description.	P.O.
861	Riddal, Am.	J and W sy	39	W	1
567	Saul, Ann.	5	pt 21	W	1
830	Stevenson, Mary	T and L sy	pt 7	W	1
841	Stevenson, Robert	T and L sy	pt 7	F	10
858	Smith, Nellie	W McKellar	4, 5	S	1
860	Saunders, Amelia	J and W sy	31, 32	W	1
858	Steer, George	W McKellar	4, 5	F	1
906	Smythe, Harriet	Corneil sy	pt 1	W	1
297	Sinclair, Dougald	W McKellar	8	F	1
412	Saunders, Elizabeth	E Oxford	pt 17	W	1
680	Stevenson, Judge	con 4	pt 21	F	1
4	Thompson, Rev J H	con 5	pt 20	F	1
270	Thomson, Archie	S Albert	4	F	1
302	Thompson, Kate W	Corneil sy	pt 7	W	1
306	Thompson, James	W Oxford	8	F	1

PART III.—Persons entitled to Vote at Elections to the Legislative Assembly ONLY.

81	Booker, John	5	pt N E 1/4 21	T H	1
154	Cain, John	Corneil sy	5	L S	1
802	Crampton, Wm J	J and W sy	49	L S	1
213	Davidson, R H		park 2	T H	1
226	Davis, John		7, 8	L S	1
291	Ellico, George	con	pt 11	L S	1
264	Emmons, Samuel	Young sy	10	T H	1
443	Hungerford, A R	E Oxford	pt 19	L S	1
472	James, Philip	W Milner	43, 44	T H	1
711	Nicholson, Jas S	con 4	20	L S	1
748	Pyatt, Anthony	W Milner	49	T H	1
781	Richards, J W	con 5	pt 21	L S	1
782	Richards, Robt E	con 5	pt 21	L S	1
801	Raymond, Jas	J and W sy	49	L S	1
996	Scott, William	J and W sy	52	L S	1

Polling Sub-Division No. 2,

Comprising all that part of the Town lying West of Maria Street to its intersection at the side road, thence west thereof and north of the road allowance between the 4th and 5th Concessions of Adelaide. Polling place, at or near R. P. Smith's Coach House.

PART I.—Persons entitled to Vote at BOTH Municipal Elections and Elections to the Legislative Assembly.

Roll No.	NAME.	Concession or Street.	No. of Lot or Part Lot.	Other Description.	P.O.
J 55	Bishop George	4	pt E hf 20	F H	1
J 57	Barclay, J E	S sy	15, 16	F H	1
J 64	Brown, Donald M	R sy	7, 8	T H	1
J 66	Baskerville, Thos	4	S W pt 20	T H	1
J 67	Brown, Thos	4	pt 21	F H	1
J 68	Baskerville, J W	C sy	5, 6	F H	1
J 75	Butler, James	S North	4	T H	1
J 138	Challoner, Thos S	S sy	25	F H	1
J 143	Charlton, Joseph	con 4	pt 22	T H	1
J 155	Campbell, John	S sy	pt 20	F H	1
J 162	Cross, William	S sy	18	O H	1
J 164	Clarke, John R	S North	7, 8	F H	1
J 176	Cornell, D B	N Albert	10, 11	T H	1
J 177	Crealy, Trueman W	con 4	pt 20	F H	1
J 187	Cummings, John	S sy	8	F H	1
J 242	Dampier, L H	S Front	E pt 12	T H	1
J 265	Evoy, George	con 4	pt 21	F H	1
J 266	Eakins, Joseph	S sy	pt 26	F H	1
J 267	Eastman, Wesley H	4	pt 21	T H	1
J 268	Edwards, H F	S sy	pt A	F H	1
J 274	Eakins, S A	N Albert	36	T H	1
J 277	Evans, John H	S North	9	F H	1
J 354	Gott, David	4	pt S W 1/4 20	F H	1
J 344	Grant, Wm H	S sy	pt A	F H	1
J 359	Greenaway, Chas	R sy	5	F H	1
J 361	German, G G	R sy	15	T H	1
J 367	Grist, Charles	S sy	1	F H	1
J 369	Gott, William	N North	pt 2	F H	1
J 375	Gray, William A	N Centre	pt 39	T H	1
J 410	Homes, John	R sy	1	T H	1
J 411	Hali, Jacob	con 4	pt 20	F H	1
J 414	Hutton, G Y	S sy	pt A	F H	1
J 427	Hilton, Friend	N Albert	37	F H	1
J 428	Hilton, Alexander	S North	pt 5, 6	F H	1

Roll No.	
J 428	H
J 433	H
J 439	H
J 440	H
J 463	I
J 500	K
J 518	L
J 528	L
J 537	L
J 571	M
J 587	M
J 602	M
J 645	M
J 662	M
J 667	M
J 660	M
J 669	M
J 673	M
J 680	M
J 682	M
J 709	N
J 710	N
J 715	N
J 727	O
J 752	P
J 794	P
J 787	P
J 799	P
J 806	P
J 808	P
J 811	P
J 820	P
J 865	S
J 872	S
J 876	S
J 880	S

POLLING SUB-DIVISION No. 2.

7

Roll No.	NAME.	Concession or Street.	No. of Lot or Part Lot.	Oth Description.	P.O.
J 428	Hughes, Fred P	S Front	pt 8	F H	1
J 433	Hoskin, Fred T	S sy	4	F H	1
J 439	Harris, William	S sy	pt 3	F H	1
J 440	Hanley, J H	N North	13	F H	1
J 463	Ivor, John	W Maria	4, pt 22	F H	1
J 500	Koppelberger, H B	N Albert	W hf 12	F H	1
J 518	Leonard, M	N Centre	pt 39	F H	1
J 528	Lenfestey, John	S Front	9, 10	F H	1
J 537	Leitch, Duncan L	R sy	9	F H	1
J 571	Marshall, Geo	C sy	31	F H	1
J 587	Manson, James	R sy	1	F H	1
J 602	Mooney, Wm J	S sy	12	T H	1
J 645	McIntyre, Peter	con 4	pt 20	F H	1
J 662	McColl, Hugh	S sy	20, 21	F H	1
J 667	McIntosh, J H	S Front	pt 8	T H	1
J 660	Mackintosh, F P	N Front	pt 7	T H	1
J 669	McBride, Wm	N North	12	F H	1
J 673	Macrauld, J S	N Front	pt 16	T H	1
J 680	McDonald, John E	4	pt 21	T H	1
J 682	McDonagh, Rev W	N Front	13, 14	O H	1
J 709	Nicholls, John T	4	pt 22	T H	1
J 710	Nicholson, Robert	4	E ₄ W ₁ 20	F H	1
J 715	Nicholson, Henry	R sy	5, 6	F H	1
J 727	Orchard, George	S sy	1	F H	1
J 752	Petch, Francis	S sy	17	F H	1
J 794	Rowland, E S	N North	pt 2	F H	1
J 787	Robinson, Walter	S North	pt 5, 6	T H	1
J 799	Richardson, Thos	54 S Front	11	F H	1
J 806	Rapley, William	R sy	2	F H	1
J 808	Rapley, Manfred	S Front	pt 13	T H	1
J 811	Rapley, Lorenzo F	S Front	pt 13	T H	1
J 820	Robertson, D S	R sy	pt 14	T H	1
J 865	Seed, Hugh	S sy	6	F H	1
J 872	Sherman, W G	S North	pt 7, 8	F H	1
J 876	Shepherd, Wm	con 4	pt 20	F H	1
J 880	Shibley, Schuyler W	R sy	16	F H	1

POLLING SUB-DIVISION No. 2.

Roll No.	NAME.	Concession or Street.	No. of Lot or Part Lot.	Other Description.	P.O.
J 884	Smith, Richard P	R sy	10, 11, 12	F H	1
J 886	Scatcherd, Allan D	S North	15	F	1
J 890	Scott, C G	con 4	pt 21	O H	1
J 892	Springer, Menno	S Front	W hf 12	T H	1
J 895	Sutherland, Robert	} con 4	N pt 22	F H	1
J 896	McCrow, Thos			F	1
.....					
J 929	Thompson, Jas	S sy	E pt 3	F H	1
J 937	Taylor, James F	N Front	pt 15, 17	T H	1
J 941	Thompson, Alex	N Front	14	F	1
.....					
J 953	Urquhart, Hector	N Albert	38	F H	1
.....					
J 981	Walker, Wm B	R sy	4	F H	1
J1006	Wetherell, J E	S North	pt 5, 6	F H	1
J1008	Wray, William	N North	1	F H	1
J1016	Williston, Rev J K	con 4	pt 21	F H	1
J1017	Weeks, George	S sy	9	F H	1

PART II—Persons entitled to Vote at Municipal Elections ONLY.

5	Anderson, Christina	S sy	pt 26	W	1
.....					
76	Bell, Archibald	N North	pt 2	F	1
77	Buttery, Mary	N Front	pt 13	F	2
89	Bolton, Ann	S sy	7	W	1
162	Brown, Eliza	S sy	18	W	1
.....					
134	Crealey, Martha	4	pt 20	W	1
135	Croucher, Agnes J	S sy	11	W	1
146	Cummings, Chas	con 4	pt 22	T	1
149	Crosby, Elizabeth	S Front	E hf L	F	1
165	Cameron, Victoria	} N Front	15	W	1
167	Cameron, Catherine			S	1
168	Cameron, Annie			S	1
169	Cameron, Jessie			S	1
170	Cameron, Kate			S	1
171	Cameron, Bella	} S sy	B	S	1
202	Crouse, Nelson			T	1
.....					
255	Doke, Jane	S sy	pt 25	W	1
.....					
267	Eastman, Chester	con 4	pt 21	F	12
410	Elliott, Charles	R sy	1	F	4
.....					
358	Gale, Mary E	N Albert	pt 12	W	1

Roll No. 787
485
513
519
603
683
64
64
202
804
66
176
885
859
919
10
PART
139
269
378
464
807
942

POLLING SUB-DIVISION No. 2.

9

Roll No.	NAME.	Concession or Street.	No. of Lot or Part Lot.	Other Description.	P.O.
787	Hawkin, David	S North	pt 5, 6	F	5
485	James, Thomas	R sy	7	F	2
513	Lee, Mary	R sy	N pt 5	W	1
519	Lloyd, Ann	W Centre	pt 44	W	1
603	Moore, Isaac	R Sy	1, 2, 3, 4	F	1
683	McNeil, Ann	S sy	pt 25	W	1
64	McLarty, Mary	} R sy	7, 8	{ S	1
64	McLarty, Mercy			{ S	1
202	Philips, W W	S sy	block B	W	1
804	Rason, Elizabeth	N North	15	W	1
66	Rowland, E	con 5	pt 20	F	1
176	Snell, W F	N Albert	10, 11	F	1
885	Scatcherd, Margaret	N Front	15	W	1
859	Thompson, Isaac	J and W sy	12, 13, 14	F	16
919	Thompson, Geo	Rapley sy	8, 9	F	1
10	Woodhull, C W	4	pt 20	F	1
1029	Zavitz, Sophia	S sy	pt A and 14	W	1

PART III.—Persons entitled to Vote at Elections to the Legislative Assembly ONLY.

139	Challoner, W L	S sy	25	L S	1
269	Edwards, Frank	S sy	pt A	L S	1
378	Graham, Robt	N Albert	12	W E	1
464	Ivor, Thomas S	con 4	pt 22	L S	1
807	Rapley, Herbert	R sy	2	L S	1
942	Thompson, Archibald	N Front	14	L S	1

Polling Sub-Division No. 3,

Comprising all that part of the Town lying West of Caradoc Street, north of Centre street to Frank street, thence north of James street to Maria street and its intersection with the side road. Polling place at the Town Hall.

PART I.—Persons entitled to Vote at BOTH Municipal Elections and Elections to the Legislative Assembly.

Roll No.	NAME.	Concession or Street.	No. of Lot or Part Lot.	Other Description.	P.O.	Roll No.
J 14	Alexander, James	S Front	pt S	T H	1	J 423
J 19	Avery, Wm	N Centre	pt 45	F H	1	J 425
J 20	Avery, Richard	S Front	pt 21	T	1	J 430
J 72	Barry, James	N Front	pt X	T	1	J 438
J 62	Bailey, Thos.	S Centre	76	O H	1	J 441
J 69	Bixel, Mathew	N Front	rear	T U V W F	1	J 466
J 71	Barry, John	N Front	pts 1 and 2	F H	1	J 465
J 73	Banks, Thos.	S Front	pt 15	T H	1	J 475
J 79	Burkholder, H M	S North	pts 3, 4	T H	1	J 476
J 86	Bishop, Wm	S Front	Queens	T H	1	J 477
J 87	McPherson, Alex.					J 520
J 88	Barber, John W	N Front	E hf 7	T H	1	J 524
J 83	Barber, John W	N Front	E hf 7	T H	1	J 525
J 90	Burgess, John C	N Centre	8 of 51	T H	1	J 526
J 94	Bettridge, Wm	N Front	9, 10	F H	1	J 531
J 145	Cooper, Charles	S Centre	pt 74	T H	1	J 535
J 163	Cameron, D M	Kittredge Ave	16	T H	1	J 539
J 172	Cook, Samuel A	S Front	pt 16, 17	T H	1	J 582
J 180	Chalmers, James	N North	pt 11	T H	1	J 584
J 181	Campbell, Robert J	con 4	pt 22	T H	1	J 588
J 182	Coghlan, Richard	N Centre	51, 52	T H	1	J 590
J 189	Campbell, Thos M	N Front	pt 5	T H	1	J 592
J 192	Crispin, Wesley T	S Front	pt 22	T H	1	J 596
J 191	Collins, Wm G	N Front	pt 7	F	1	J 598
J 233	Dubois, Joseph	N Centre	W 1/2 43	O H	1	J 603
J 234	Dingman, Absalom	N North	S W pt 12	T H	1	J 657
J 238	Dawson, Wm	N Front	pt X	T	1	J 652
J 244	Degroat, James	N North	W 1/2 8	F H	1	J 653
J 245	Dingman, W S	N Front	E 1/2 3	T	1	J 665
J 246	Dingman, L H					J 672
J 733	Dubois, John	N Centre	W hf 43	F	1	J 676
J 257	Dewar, William	Kittredge Avenue	19	T H	1	J 677
J 301	Foreman, Wm	S Front	pt 16, 17	T H	1	J 679
J 312	Fitzpatrick, Thos	N Centre	pt S T	T H	1	J 681
J 317	Fawcett, Wm F	Kittredge Avenue	13 to 18	O H	1	J 714
J 353	Geddes, Wm	N Front	pt U	T	1	J 729
J 350	Gustin, Geo M	S Front	pts 17, 18	F H	1	J 674
J 366	Graham, Geo	N Front	pt 7	T H	1	J 783
						J 182

POLLING SUB-DIVISION No. 3.

north of Centre
set and its
Hall.

Elections and

Other
Description. P.O.

T 1
O H 1
V. F 1
F H 1
T H 1
T H 1
T H 1
T H 1
T H 1
F H 1

T H 1
T H 1
T H 1
T H 1
T H 1
T H 1
T H 1
F H 1

O H 1
T H 1
T 1
F H 1
T 1
T 1
F 1
T H 1

T H 1
T H 1
O H 1

T 1
F H 1
T H 1

Roll No.	NAME.	Concession or Street.	No. of Lot or Part Lot.	Other Description.	P.O.
J 423	Hunter, Geo.	N Centre	pt V	T H	1
J 425	Hopwood, Thos	N Front	pt U	T H	1
J 430	Hendershot, A.	N North	pt 8	T H	1
J 438	Harrison, F L	N North	10	F H	1
J 441	Hill, David	S Centre	69	T H	1
J 466	Irwin, John	S Front		Income	1
J 465	Ivor, David	N Front	pt 1	T	1
J 475	Johnston, Jno R.	N Centre	pt S T	1 H	1
J 476	Johnston, Alex	Kittredge Ave	27, 28	O H	1
J 477	Jay, Charles C.	N Centre	pt 44	T H	1
J 520	Legallee, Thos.	S North	7	F H	1
J 524	LaMotte, George	S Centre	72	F H	1
J 525	Letzgas, Joseph	N Front	pt U	T H	1
J 526	Lee, James H	S Front	pt 18	T H	1
J 531	Large, Henry	N North	pt 12	T H	1
J 535	Lauler, J E	N Front	11	F	1
J 539	Lindsay, W B	N Front	12	F H	1
J 568	Moore, W H	N Centre	pt 41	T H	1
J 539	Muldon, John S	N Centre	pt 46	T H	1
J 582	Meek, Fred W.	N Front	pt X	T H	1
J 584	Middleton, Rev E	S Front	pt 17	T H	1
J 588	Matthews, P H	N Front	pt 1	T	1
J 590	Meekison, Andrew	S Front	pt V	F H	1
J 592	Meekison, John D	S Front	pt V	T H	1
J 596	Miller, Robert	N Centre	pt 44	T H	1
J 598	Mallon, John	S Centre	pt 74	F H	1
J 603	Moore, Isaac	S Front	19	F H	1
J 657	McIntyre, Patrick	N North	9	O H	1
J 652	McIntosh, Wm	4	pt 22	T H	1
J 653	McKellar, Malcolm	S Centre	75	F H	1
J 665	McLaren, Andrew	N Front	pt W	T H	1
J 672	McKellar, John	S Front	pt U	T H	1
J 676	McKinnon and	} S Front	Arcade	{ T	1
J 677	Newton				
J 679	McNeil, David	N Front	pt 4	T H	1
J 681	McCallum, Andrew	S North	W pt 1	T H	1
J 714	Noble, Joseph J	N Front	W 1/2 4	T	1
J 729	O'Keefe, Patrick	N Front	pt 2	F H	1
J 674	Parker, Jas W	N Centre	40	O H	1
J 763	Paine, John	N Centre	pt 47	T H	1
J 162	Pool, John	N Front	pt V	F	1

POLLING SUB-DIVISION No. 3.

Roll No.	NAME.	Concession or Street.	No. of Lot or Part Lot.	Other Description.	P.O.	Roll No.
J 788	Rothwell, T W	K sy of 22, 24	20	O H	1	185
J 798	Rouston, Thos	N Front	pt V	T H	1	187
J 809	Roper, Edwin P	S Front	pt S	T H	1	193
J 810	Reynolds, C H	S Front	pt T	T	1	193
J 815	Roach, B G	S Centre	pt 77, 78	T H	1	441
J 819	Rowland, Edward	S Front	pt 22	T	1	
J 887	Strangway, George	S Front	E hf 15	T H	1	240
J 888	Smith, W T	S Front	pt 17	T H	1	243
J 889	Snell, Wm F	S Front	pt U	F H	1	241
J 900	Sewell, Charles J	N Front	E pt 6	T H	1	
J 902	Stevenson, Alex	N Front	W pt 6	F H	1	
J 904	Scatcherd, E W	lot 23	21, 22, 56	F H	1	238
J 907	Saulsbury, John	S Centre	pt 73	F H	1	277
J 938	Thompson, Alex S	N Front	pt 2	T	16	281
J 939	Todd, William E	S Front	pt U	T H	1	308
J 940	Tinkler, Wm	con 4	pt 22	T H	1	305
J 943	Thomas, Wm J	} S Front	pt 16	T H	1	423
J 944	Elliott, Thos B			T H	1	811
J 956	Vail, Wm A	S Front	pt 14	T H	1	277
J 959	Vaney, Nathan	S Front	pts 17, 18	T H	1	354
J 961	Vary, David W	N Front	8	F H	1	355
J1002	Wright, Chas C	N Front	pt W	T	1	361
J1003	Waite, David	} S North	12	F H	1	369
J1004	Waite, Stephen			F H	1	900
J1001	Wright, James	Kittredge Ave	23, 24	F H	1	
J1009	Walters, Reuben	N Centre	pt 46	T H	1	420
J1011	Woodhull, Chas W	N Centre	pt 48, 49	T H	1	429
PART II—Persons entitled to Vote at Municipal Elections ONLY.						
18	Auld, Euphemia	N Front	pts 4, 5	W	1	440
27	Andrews, Rev A	N North	pt 12	F	1	875
70	Bixel Cyrus	N Front	rear T U V W	F	1	463
763	Bond, Isaac	N Centre	pt 47	F	16	464
84	Black, John	N Centre	pts 48, 49	F	1	
91	Bowley, Fred	} S Front	pt 18	T	2	
92	Marsh, Elihu			T	2	
91	Bowley, James	S Front	pt 18	F	2	478
474	Bogue, Thos	N Centre	pt S T U	F	2	
947	Buck, Wm	S Centre	pt 70	F	14	
20	Crispin, Thos	S Front	pt 21	F	23	887
162	Cross, Wm	N Front	E pt V	T	1	870
163	Cameron, D M	} N Front	W pt W	F	1	
164	Clarke, John R			T	1	90
177	Crealey, Truman W	S Front	pt T	T	1	530
178	Clark, Wm G	S Front	pt V	T	1	530
179	Challoner, T G	S Front	Arcade	T	1	534
				T	1	538

POLLING SUB-DIVISION NO. 3.

13

Other Description. P.O.
 O H... 1
 T H... 1
 T H... 1
 T H... 1
 T H... 1
 T H... 1

Roll No.	NAME.	Concession or Street.	No. of Lot or Part Lot.	Other Description.	P.O.
185	Cox, James	S Front	12 of 24	F	1
187	Cummings, John	S Front	9 of 24	T	1
190	Collins, Ellen	N Front	pt 7	W	1
193	Cameron, John	S Front	pt V & 26	T	1
441	Colter, Charles	S Centre	69	F	5

T H... 1
 T H... 1
 F H... 1
 T H... 1
 F H... 1
 F H... 1
 F H... 1

240	Dyas, Wm J	S Front	pt T	T	1
243	Diprose, Robert	S Front	pt Arcade	T	1
241	Dickenson, R	S Front	pt U	T	1

T... 16
 T H... 1
 T H... 1
 T H... 1
 T H... 1

238	English, Eliza	N Front	pt X	W	1
277	Evans, John H	S Front	pt 23	T	1
281	Edwards, Richard	N Front	pt 3	F	11

T H... 1
 T H... 1
 F H... 1

308	Fitzpatrick, P C	N Centre	47, 48	F	1
305	Fullerton, James	N Centre	pt 48, 49	F	1
423	Fletcher, Clarine	S Centre	pt V	W	1
811	Francis, G M	S Front	pt U	F	U S

T... 1
 F H... 1
 F H... 1
 F H... 1
 T H... 1
 T H... 1

277	Grist, Charles	S Front	pt 23	F	1
354	Geddes, Jas R	N Front	pt U	T	1
355	Geddes, Martha	N Centre	pt 42	W	1
361	German, G G	N Centre	pts 48, 49	T	1
369	Gott, William	S Front	pt 21	T	1
900	Gibbons, Geo C	N Front	pt 6	F	4

ONLY.
 W... 1
 F... 1

420	Healy, James	S Centre	pt 74	F	2
429	Herbert, Bessie	S Front	pt V	S	1
241	Howard, George	S Front	pt U	F	18
869	Humphreys, S	W Arthur	3, 4, 5	F	4
431	Hawley, Mary	S Centre	pt 70	W	1
440	Hanley, John H	S Front	pt 22	T	1
875	Harvey, Wm	S Centre	pt 77, 78	F	21

F... 1
 F... 16
 F... 1
 T... 2
 T... 2
 F... 2
 F... 2
 F... 14

463	Ivor, John	} N Front	pt 1	{ T	1
464	Ivor, David				

478	James, John	N Centre	48, 49	T	1
-----	-------------	----------	--------	---	---

F... 23
 T... 1
 F... 1
 T... 1
 T... 1
 T... 1
 T... 1

887	Knaggs, James	S Front	pt 15	F	21
870	Keefer, T H	W Caradoc	9, 10	F	U S

90	Loughead, J S	N Centre	8 of 51	F	16
530	Learoyd, Rev J	N Front	W pt V	F	1
530	Learoyd, A D	N Front	W pt V	T	1
534	Laird, W P	N Front	pt 7	T	1
538	Laing, John & Co	N Front	pt W	F	4

FOLLING SUB-DIVISION No. 3.

Roll No.	NAME.	Concession or Street.	No. of Lot or Part Lot.	Other Description.	P.O.
581	Meek, Wm H	N Front	pt X	T	1
583	Manners, Mary P	S Front	pt 14	W	1
585	Moore, Wm C	N Front	pt X	F	1
586	Murray, Wm H	N Front	E pt 1	F	1
587	Manson, Jas.	N Front	pts 1, 2	F	1
589	Mills, Isabella	S Front	pt S	T	1
594	Maxwell, Mary A	S North	pts 3, 4	W	1
615	Manning, John	N Centre	pts V U	F	18
666	McRae, Alex	N Front	E pt X	T	22
673	Macraut, J S	N Front	pt Arcade	T	1
674	Parker, J W		T	1	
696	McKellar, John	N Centre	50, 51	F	1
698	McClarty, Mary	N Front	E pt 5	S	1
699	McClarty, Mercy		S	1	
245	McIntyre, Hugh	N Front	pt 3	F	1
431	McDermott, Ellen	S Centre	pt 70	W	1
708	Newton, Eliza	N Front	pt V	S	1
712	Noble, James	N Front	W 1/4	T	1
715	Nicholson, Henry	N Front	pt 7	T	1
177	Orchard, Geo	S Front	pt T	F	1
730	Oates, Addie	N Front	pt 5	T	1
162	Pool, Irving	N Front	pt V	F	1
745	Pegley, Matilda	Reil sy	9, 11	S	1
73	Patterson, Samuel	S Front	pt 15	F	2
762	Parker, Harvey	N Front	pt 6	F	2
766	Parker, James	Crealey sy	1, 2, 3, 4	F	1
353	Pearce, Jane	N Front	pt U	W	1
779	Parker, Lucy J	S Front	pt 14	F H	1
795	Ramey, Catharine	S Centre	pt 74	W	1
805	Rapley, Wm & Co	N Front	pt 1	T	1
811	Rapley, Lorenzo	S Front	pt U	T	1
812	Ray, Samuel H	S Front	9 of 24	F	1
818	Robertson, John	N Front	pt 6	T	1
308	Rose, Hugh	N Centre	pt 8, 9	F	1
308	Rose, Williamina	N Centre	pt 8, 9	F	1
880	Shibley, S W	N Front	pt X	T	1
890	Scott, C G	S Front	pt Arcade	T	1
892	Springer, M	S Front	pt Arcade	T	1
897	Sutherland, Robt	N Center	pt 48, 49	F	1
709	Smith, Wm	con 4	pt 22	F	2
947	Tuck, Angelina	S Centre	pt 70	W	1

Roll No. 954 956 957 1037 1015 439 1033 1034 PART 140 141 205 207 205 275 370 423 459 650 901 917

POLLING SUB-DIVISION No. 3.

15

Other Description. P.O.
 T 1
 W 1
 F 1
 F 1
 F 1
 T 1
 W 1
 F 18

Roll No.	NAME.	Concession or Street.	No. of Lot or Part Lot.	Other Description.	P.O.
954	Vokes, James T	N Front	pt W	T	1
956	Vail, Wm A	N Front	pt V	T	1
957	Vail, Geo B			T	1
1037	Willis, Magge	S Front	pt V	T	1
1015	Woodbary, Edwin	N Front	pts 3, 4, etc	F	15
499	Werner, B.	N North	E pt 8	F	24
1033	Zavitz, Thomas	S Front	10 of 24	T	1
1034	Zavitz, Sarah J	N Centre	pt 44	T H	1

T 22
 T 1
 T 1
 F 1
 S 1
 S 1
 F 1
 W 1

PART III.—Persons entitled to Vote at Elections to the Legislative Assembly ONLY.

140	Crooks, John	con 4	pt N E ₄ 22	O	1
141	Crooks, George T	con 4	pt N E ₄ 22	L S	1
205	Cockrell, Thomas	S Front	pt S	W E	1
207	Coutts, R H	N Front	pt S	W E	1
205	Cameron, Hugh	S Centre	77, 78		1
275	Eastman, Albert E	S Front		W E	1
370	Green, Wm	N Centre	pt 48, 49	T H	1
423	Hunter, Robert	N Centre	pt V	L S	1
459	Healy Wm	S Front	19	W E	1
650	McVicar, Alex	S North	pt 6	T H	1
901	Sewell, Samuel	N Front	pt 6	W E	1
917	Stritch, D W	S Front	Queen's	W E	1

W 1
 T 1
 T 1
 F 1
 T 1
 F 1
 F 1
 T 1
 T 1
 T 1
 F 1
 F 2
 F 2
 F 1
 W 1
 F H 1

W 1

Polling Sub-Division No. 4,

Comprising all that part of the Town lying West of Caradoc Street, South of Centre street to Frank street, thence South of James street and East of Richmond and McKellar streets. Polling place at the High School

PART I.—Persons entitled to Vote at BOTH Municipal Elections and Elections to the Legislative Assembly.

Roll No.	NAME.	Concession or Street.	No. of Lot or Part Lot.	Other Description.	P.O.
J 9	Anderson, Wm J	S and K sy	pt 107	T H	1
J 11	Armstrong, T L	S James	pt U, V	F H	1
J 13	Alison, Peter J	S and K sy	67, 68	F H	1
J 21	Althouse, M W	N Metcalfe	E hf W	T H	1
J 837	Adair, Ben	S and K sy	84	F H	1
J 35	Brush, Samuel	Reid sy, S R R	4	T H	1
J 23	Brown, John	S and K sy	134	F H	1
J 37	Barclay, Wm F	S and K sy	133	F H	1
J 39	Brown, Josephus W	S and K sy	60	F H	1
J 40	Ballantyne, R A	S and K sy	17, pt 18	F H	1
J 118	Campbell, Thos	S and K sy	141	F H	1
J 120	Carson, S W	S and K sy	34	F H	1
J 126	Cutler, Jacob	Reid sy	pt 6	T H	1
J 127	Campbell, Jas	S and K sy	127, 128	F H	1
J 128	Campbell, John	McK and McR sy, E	4, 5	T H	1
J 129	Campbell, Jas M	S and K sy	36, 37	F H	1
J 132	Cawthrop, Thos	S Metcalfe	pt 1	F H	1
J 144	Crone, William	S Albert	34, 35	F H	1
J 173	Currie, Rev Peter	S and K sy	103	F H	1
J 195	Collins, Isaac	N Metcalfe	V and 204	T H	1
J 203	Carruthers, Andrew	S Metcalfe	E pt 1	T H	1
J 210	Dudley, George	Reid sy	pt 6	F H	1
J 211	Deli, Ben F	S and K sy	113 to 117	F H	1
J 216	Dewar, Neil	S & K sy	142	T H	1
J 217	Dayfoot, Rev P K	S & K sy	71	T H	1
J 221	Donnelly, Patrick	E McKellar	4, 5	F H	1
J 222	Donnelly, James	E McKellar	4, 5	F H	1
J 232	Davis, Fred H	S Centre	W pt T	T H	1
J 236	Dunsmore, Thos	S & K sy	99	T H	1
J 237	Daniells, Wm	S & K sy	54, 55	F H	1
J 258	Ellis, John	McK and McR sy, D	6, 7	T H	1
J 259	Elliott, Jas B	S & K sy	69, 70	F H	1
J 285	Ferris, Wm Y	S & K sy	6, 7	T H	1
J 288	Folks, Francis	Reid sy	S pt 5	F H	1
J 289	Farrow, Robert	S and K sy	61	F H	1
J 290	Fitzpatrick, James	J and W sy	W hf 15	O H	1

Roll No.
 328
 J 329
 J 338
 J 357
 J 362
 J 363
 J 371

 J 389
 J 391
 J 393
 J 400
 J 401
 J 403
 J 404
 J 409
 J 421
 J 422
 J 435
 J 436

 J 461

 J 470
 J 475
 J 479
 J 480
 J 483

 J 491
 J 492

 J 509
 J 529
 J 532
 J 536
 J 541

 J 924
 J 557
 J 552
 J 563
 J 565
 J 578
 J 591
 J 611
 J 612

 J 630
 J 631
 J 633

POLLING SUB-DIVISION No. 4.

Roll No.	NAME.	Concession or Street.	No. of Lot or Part Lot.	Other Description.	P.O.
J 634	McPhail, D C	S and K sy	73	F H	1
J 637	McIntyre, John C	Reid sy	3	F H	1
J 639	McNeice, Thomas	S and K sy	42	F H	1
J 641	McKeigan, Alex	S and K sy	20	F H	1
J 654	McBride, John	N Metcalfe	pt S	O H	1
J 657	Macadam, Rev Thos	S Albert	26, 27	O H	1
J 195	McIntyre, John	N Metcalfe	pt V, 204	O	1
J 703	Northcott, Joseph	Reid sy	N hf 15, X	O E	1
J 704	Nichol, Edward	Kit. sy of 11	65, 66, 67	F H	1
J 705	Neil, George H	W McKellar	18	F H	1
J 706	Northcott, Jas E	Reid sy	N hf 8	T H	1
J 717	Nicolson, Ed Q	N James	S, T	T H	1
J 718	Nicholls, Thomas	N James	pt V	F H	1
J 721	O'Dwyer, Edward	McK and McR sy, C	1, 2	F H	1
J 726	Ogden, Wm A	S Albert	28	F H	1
J 741	Plaxton, Thos	Reid sy	pt N hf 15	T H	1
J 744	Pickering, Thos H	Reid sy	N E part 5	T H	1
J 746	Petch, James	S and K sy	75, 76	F H	1
J 747	Pearce, Harry R	S and K sy	W hf 93	T H	1
J 750	Parkinson, M	S and K sy	2	T H	1
J 755	Parker, Chas W	N Metcalfe	W hf U	T H	1
J 759	Parsons, Edwin	N James	109, 110	T H	1
J 760	Prangley, George	N James	pts 109, 110, 111	T H	1
J 761	Prangley, J W	N James	pts 109, 110, 111	T	1
J 767	Pool, Wm H	R R grain elevator		F	1
J 779	Ross, Hugh	S and K sy	135	F H	1
J 783	Robinson, John	S and K sy	110	F H	1
J 793	Rapley, Henry	N James	U	T H	1
J 817	Reed, Alex	S and K sy	196 to 199	F H	1
J 821	Rooney, James A	S Albert	29	T H	1
J 772	Richardson, R F	S Albert	30	O H	1
J 691	Rowe, Edward	S Albert	32	F H	1
J 837	Saulsbury, John	S and K sy	84	T H	1
J 838	Stevens, B F	S and K sy	94	F H	1
J 844	Stevens, John W	E McKellar	11, 12, 13	F H	1
J 852	Sinclair, Archibald	S and K sy	132	T H	1
J 853	Stoddart, Thos	McK and McR sy, D	1, 2	T H	1
J 856	Sessions, Wm	J and W sy	E hf 15	F H	1
J 871	Smith, Chas W	S Albert	26, etc	F	1
J 899	Seymour, Henry	S Metcalfe	56	T H	1
J 922	Thody, Elijah	S and K sy	25	T H	1
J 923	Trelfa, Wm	S and K sy	3, 4, 5, 11, 12, 13, 14	O H	1
J 924	Tomlinson, G W	Beattie sy	32	F H	1
J 925	Topp, Abraham	S and K sy	27, 28	F H	1
J 936	Thomson, James	N Metcalfe	pt T	T	1

Roll No.	
J 85	W
J 971	W
J 976	W
J 977	W
J 978	W
J 1010	W
J 1014	W
J 1018	W

PA	
22	A

741	B
85	B
552	B

176	C
198	C
199	C
201	C
216	C

128	D
-----	---

258	E
876	F

315	F
317	F

327	C
-----	---

285	F
390	F
399	F
432	F
433	F
434	F
457	F
470	F
936	F
977	F

501	
-----	--

POLLING SUB-DIVISION No. 4.

19

Other Description. P.O.
 . . . F H . . . 1
 . . . F H . . . 1
 . . . F H . . . 1
 . . . F H . . . 1
 . . . O H . . . 1
 . . . O H . . . 1
 . . . O 1

Roll No.	NAME.	Concession or Street.	No. of Lot or Part Lot.	Other Description.	P.O.
85	Winters, Thomas	N James	109, 110	F	1
971	Woods, Charles	S and K sy	12	F H	1
976	Waltham, John	Reid sy	pt 14, 15	F H	1
977	Wray, Wm	S and K sy	110, 111, 112	T H	1
978	Wilkinson, Wm	McK and McR sy, B	8	F H	1
1010	Whitehead, James P	S James	E hf T	T H	1
1014	Woods, James	S James	pts 200, 202	T H	1
1018	Wilson, Hiram	S and K sy	78	T H	1

. . . O E . . .
 . . . F H . . . 1
 . . . F H . . . 1
 . . . T H . . . 1
 . . . T H . . . 1
 . . . F H . . . 1

PART II—Persons entitled to Vote at Municipal Elections ONLY.

. . . F H . . . 1
 . . . F H . . . 1

22	Ash, Ephraim	S James	pt 200, 202	F	9
741	Brown, John	Reid sy	pt 15	F	1
85	Bradley, Mary	N James	pt 109, 110	W	1
552	Buck, Wm	S and K sy	139, 140	F	14
176	Cornell, D B	Grain elevator		T	1
198	Cowan, Alice	S Centre	79, 80	W	1
199	Cowan, Thomas	S Centre	79, 80	F	1
201	Crone, Ann	S and K sy	79	W	1
216	Carmichael, Peter	S and K sy	142	F	10
128	Dingman, John	McK and McR sy, E	4, 5	F	8
258	Ellis, Mary	McK and McR sy, D	6, 7	W	4
876	Elliott, J B	N James	pt 109, 110	F	U S
315	Franl, Charles G	Beattie sy	6 to 17	F	1
317	Fawcett, W F	S and K sy	119	F	1
327	Graut, Thos	Reid sy	S hf 10	F	23
285	Hawley, Mary	S and K sy	47	W	U S
390	Howe, Kate	McK and McR sy, C	3, 4, 5	W	1
399	Hart, Catharine	Reid sy	pt 6	W	1
432	Howard, Annie	S Centre	79, 80	S	1
433	Hoskin, Fred T	N James	pts 109, 110	T	1
434	Hoskin, Fred G	N James	pts 109, 110	T	1
457	Harrison, Mary A	N James	E hf V	W	1
470	Henry, Richard	J and W sy	16	F	1
936	Haldane, Robert	N Metcalfe	pt 1	F	2
977	Harris, Mary	S and K sy	110, 111, 112	W	1
501	Kittredge, A H	on Lot 11 in 10	11 to 57	F	1

T H . . . 1
 F H . . . 1
 F H . . . 1
 T H . . . 1
 T H . . . 1
 F H . . . 1
 F H . . . 1
 T H . . . 1
 O H . . . 1
 F H . . . 1
 F H . . . 1
 T 1

POLLING SUB-DIVISION NO. 4.

Roll No.	NAME.	Concession or Street.	No. of Lot or Part Lot.	Other Description.	P.O.
232	Longhead, Anne	S Centre	pt P	W	2
508	Lewis, Anr	Reid sy	S hf 7	W	1
432	Lanson, Mrs Eliza	S Centre	pt 79, 80	W	1
821	Longhead, J S.	S Albert	29	F	16
562	Miles, Mary	Reid sy	pt 7	W	1
577	Moody, Elizabeth	S Albert	33	W	1
632	McDougall, Mary	S and K sy	102	W	1
638	McNeice, Jane	S and K sy	E hf 107	W	1
649	McTaggart, Jane	S Metcalfe	pt 57	W	1
654	McBride, Samuel	N Metcalfe	pt S	T	1
564	McConechy, Jane	S and K sy	120, 121	W	1
852	McAlpine, Maria	S and K sy	132	W	1
688	McGibbon, Finlay	S Albert	38, 39	T	16
691	McNeil, Nancy	S Albert	32	O	1
35	McIntyre, Hugh	Reid sy	pt 4	F	10
1018	Napper, Charles	S and K sy	78	F	U S
710	Nicholson, Robert	W Caradoc	52	F	1
399	Nicholls, Edward	Reid sy	pt 6	F	1
724	Ogden, Susannah	S Metcalfe	2	W	1
9	Orr, Nancy	S and K sy	107	W	1
735	Pincombe, R.	Reid sy, S R R	2	F	1
236	Robinson, Albert	S and K sy	99	F	1
777	Rowland, Mary	S and K sy	106	W	1
784	Ross, Hon G W	S and K sy	150, 151, 152	F	1
794	Ray, Mary E	N Metcalfe	205, 206	W	1
822	Richardson, Fanny	S Albert	30	W	1
799	Richardson, Thomas	J and W sy	17 to 21	F	1
21	Stokoe, Bartholomew	N Metcalfe	E hf U	F	4
849	Steer, George	McK and McR sy, A	1 to 5, &c	F	1
854	Stoops, Dinah	S and K sy	E hf 93	W	1
398	Smith, Catherine	S James	pt 200	W	1
952	Seis, David	Reid sy	pt 5	F	1
921	Thompson, Adda	Reid sy	pt 6	W	1
126	Upton, John	Reid sy	pt N hf 6	F	2
958	Vanstaden, W G	J and W sy	17 to 21	F	16

Roll No.	NAME.	Concession or Street.	No. of Lot or Part Lot.	Other Description.	P.O.
986	Williams, Jane	S and K sy	.59	F	.23
1005	Whiting, Kate E.	S and K sy	.101	T	1
1914	Woods, Charles	S James	pt 200, 202	F	1
403	Webb, Joseph	S and K sy	.65, 66	F	1
541	Wilson, Joseph	S Albert	.37	F	.21
759	Winters, Thomas	N James	pt 109, 110	F	1
1005	Zavitz, Thomas	S and K sy	.191	F	1

PART III.—Persons entitled to Vote at Elections to the Legislative Assembly ONLY.

12	Armstrong, Irwin	S James	pt N	LS	1
26	Barron, Edwin	Reid sy	S hf 8	FH	1
66	Bicknell, Benj.	S Metcalfe	.57	TH	1
121	Chapman, John H	J & W sy	E hf 24	TH	1
364	Fitzpatrick, Wm	S James	.200, 202	WE	1
392	Hurd, Cyrus	McK & McR sy	B 6, 7	F	1
405	Hare, Andrew	J & W sy	.26, 27	TH	1
516	Lamon, Robert S	S Metcalfe	pt 57	LS	1
597	Miller, Wm S	S & K sy	.30, 31, 40	LS	1
635	McPhee, Alex	J & W sy	pt 26	TH	1
640	McLean, John	S & K sy	.21	TH	1
785	Rogers, Wm	A sy	.18, 19	T	1
855	Surtus, John	J & W sy	.22	TH	1

Polling Sub-Division No. 5,

Comprising all that part of the Town lying East of Caradoc Street and North of Metcalfe Street. Polling Place at Colborne Street School House.

PART I.—Persons entitled to Vote at BOTH Municipal Elections and Elections to the Legislative Assembly.

Roll No.	NAME.	Concession or Street.	No. of Lot or Part Lot.	Other Description.	P.O.
J 437	Bolton, Wm.	4	pt 22	F H	1
J 59	Billington, George	S Front	pt N, O	T H	1
J 82	Banghart, J L.	S Front	G	F H	1
J 95	Barnard, Justin	E Colborne	pt 5	T H	1
J 70	Bixel, Cyrus.	Kit. Avenue	pt 12	T H	1
J 140	Crooks, Thomas	4	N W pt 22	O H	1
J 142	Collins, Thomas	A and K sy	50	T H	1
J 143	Coy, Richard	E Caradoc	S hf 9	F H	1
J 147	Cornyn, Rev T	S Front	D, E, F	O	1
J 148	Collins, Wm.	S Front	pt J	T H	1
J 150	Craik, Alexander	W Colborne	N hf 3	T H	1
J 158	Clarke, Edward	A and K sy	53	T H	1
J 159	Clarke, Henry	A and K sy	43	T H	1
J 160	Cockburn, A A	A and K sy	38, 39, 40	T H	1
J 161	Collins, Edward	A and K sy	68	T H	1
J 183	Calcut, Chester	S Front	H	T H	1
J 185	Cox, James	con 4	pt 24 and 25	F H	1
J 230	DesBrisay, Rev L	W Head	Parsonage	O H	1
J 231	Dell, Solomon	E Colborne	pt 9	F H	1
J 247	Douglas, Wm O	E Caradoc	pt 1	T H	1
J 252	Deguerra, Ambrose	A and K sy	pt 64	T H	1
J 426	Dumbrill, R.	N Metcalfe	8, 9, 10	F H	1
J 270	Evely, Wm	N Front	pt K	F H	1
J 276	English, John	N Metcalfe	W Head	O H	1
J 273	Evans, Fred L E	S Front	pt Q	T	1
J 298	Fitzpatrick, Peter	S Front	pt Q	T H	1
J 299	Finlay, James W	S Front	W pt Q	T H	1
J 300	Foe, Amos H	S Front	pt R	T H	1
J 308	Fitzpatrick, P C	W Arthur	pt 3	T H	1
J 310	Frank, Francis W	E Caradoc	8, 9	F H	1
J 308	Fitzpatrick, James	W Arthur	pt 3	F	1
J 345	Galloway, James	con 4	pt 22	F H	1
J 346	Gare, George	A and K sy	52	T H	1
J 347	Grant, Rev Wm	A and K sy	S hf 38, 39	T H	1
J 348	Green, Joseph	S Front	pt A	T H	1
J 9	Gooderham, H.	W Colborne	6	T H	1
J 352	Geary, William	N Front	pt L, M	O H	1

Roll No.	NAME.	Concession or Street.	No. of Lot or Part Lot.	Other Description.	P.O.
J 372	Gill, Aaron	A and K sy	55, 56	T H	1
J 373	Goodison, John	A and K sy	67	T H	1
J 374	Gooderham, Ezekiel	E Colborne	pt 8	T H	1
J 533	Hull, Wesley	con 4	pt 22	F	1
J 415	Herdman, Samuel	con 4	pt 22	F H	1
J 416	Hodgkinson, Wm	E Colborne	pt 9	T H	1
J 417	Hicks, John	E Colborne	S hf 4	T H	1
J 437	Hull, W W	4	pt 22	F H	1
J 445	Hamlyn, Henry	A and K sy	71	T H	1
J 448	Hill, Robt S	W Colborne	S hf 3	T H	1
J 449	Hill, George S	W Colborne	S hf 3	T H	1
J 454	Heard, John	E Caradoc	S hf 7	F H	1
J 455	Hoare, W W	E Caradoc	6, N hf 7	F H	1
J 462	Irvine, Thos	N Front	pt S	F H	1
J 473	Johnson, P H	W Colborne	2	F H	1
J 484	James, Joseph T	E Caradoc	10, 11	O H	1
J 498	Kunz, Robert	S Front	pt P	T	1
J 499	McCandless, S	S Front	pt P	T	1
J 501	Kittredge, A H	W Colborne	12, 13, 14	T H	1
J 577	Lewis, David D	E Caradoc	3	F H	1
J 530	Learoyd, Alfred D	A and K sy	E hf 67	T H	1
J 533	Lawson, Fred T	con 4	pt 22	T H	1
J 574	Munroe, D W	4	pt 22	F H	1
J 576	Mann, Wm	E Caradoc	10	T H	1
J 595	Manigault, Wm	E Head	pts 4, 5	F H	1
J 599	Murdock, Wm	E Head	1, and pt 2	F H	1
J 604	Merrills, Thomas	A and K sy	69	F H	1
J 605	Murdock, George	W Arthur	pt 5, 6	T H	1
J 606	Murdock, John	W Arthur	pt 5, 6	T H	1
J 616	Murdock, William	N Front	rear R, S	F H	1
J 648	McCormick, John	A and K sy	72	F H	1
J 656	McCallum, Daniel	S Front	pt K	F H	1
J 658	McNeil, John	N Front	W hf L	F H	1
J 659	McGarvey, Edward	N Front	N, O	T H	1
J 660	McGarvey, John	N Front	pt M, P	O	1
J 661	McMillan, Josiah	S Front	pt O	F	1
J 684	McLean, Angus	A and K sy	47 to 49	T H	1
J 685	McEachren, Joseph	E Head	pt 4	T H	1
J 686	McLeod, Jas	Head	pt E hf 3	T H	1
J 689	McKellar, Duncan	E Colborne	pt 1	T H	1
J 731	Ogden, H H	E Colborne	6	F H	1

Roll No.	NAME.	Concession or Street.	No. of Lot or Part Lot.	Other Description.	P.O.
J 733	Pincombe, R.	4	pts 23, 24	O H	1
J 753	Petch, Isaac	A and K sy	70	F H	1
J 754	Paine, Jas T.	E Head	S hf 6	T H	1
J 756	Pike, Charles	N Front	pt P, Q	F H	1
J 758	Pike, Wm H.	S Front	pt R	T H	1
J 764	Pool, Irving	E Colborne	1, 2, 3	F H	1
J 765	Plaxton, Albert	E Caradoc	10	T H	1
J 769	Poole, A E	E Caradoc	pt 1	T H	1
J 789	Richardson, L R.	con 4	pt 23	F H	1
J 792	Rundle, William	E Colborne	7	F H	1
J 823	Richardson, Wm.	S Front	pt A, B.	F H	1
J 828	Shepherd, G B.	con 4	pt 22	F H	1
J 867	Statham, Silas F.	con 4	pt 22	F H	1
J 869	Snider, Andrew	W Arthur	pt 4, 5	T H	1
J 873	Spurr, Luke V.	N Front	pt P	T H	1
J 877	Statham, Enoch	S Front	pt P	T	1
J 417	Scott, Jacob	E Colborne	pt 4	F H	1
J 878	Statham, Titus J.	A and K sy	62	F H	1
J 893	Schraun, Levi W	N Front	E hf K	T H	1
J 916	Seaton, John	S Front	R & Music Hall	F H	1
J 930	Thompson, John R.	con 4	pt 22	F H	1
J 931	Thompson, Andrew	con 4	pt 23	F H	1
J 932	Thompson, John	con 4	pt N hf 23	T H	1
J 934	Touzeau, Thomas	N Metcalfe	pt 10, 11	F H	1
J 938	Thompson, Wm	E Caradoc	pt 10	F H	1
J 945	Tagg, John	N Metcalfe	pt 10	T H	1
J 946	Tanton, John	E Head	pt 2, 3.	T H	1
J 983	Whalls, Thos	A and K sy	45, 46.	T H	1
J 984	Wilkinson, Isaac	W Arthur	7, 8	F H	1
J 985	Williams, Roger	A and K sy	64, 65, 66	F H	1
J 988	Watkinson, Wm J.	E Head	N hf 6.	T H	1
J 987	Walsh, Patrick	E Head	pt 3, 4	F H	1
J 989	Winlow, J B	W Colborne	4	F H	1
J 991	Wright, Walter	N Front	G, H, J	T H	1
J 999	Wilton, Samuel	N Front	pt S	T	1
J 992	Wilton, John	E Colborne	S hf 5.	F H	1
J1030	Zavitz, David H	A and K sy	63	T H	1
J1032	Zavitz, Thomas	con 5	pt 22	F H	1
J1033	Zavitz, Edward	A and K sy	pt 21, 22.	F H	1

PART II—Persons entitled to Vote at Municipal Elections ONLY.

247	Brown, John	E Caradoc	1	F	1
150	Bishop, William	W Colborne	N hf 3	F	1
161	Baillie, Hugh	A and K sy	68	F	16
347	Best, Jacob	A and K sy	pt 38, 39	F	1

Roll No.	NAME.	Concession or Street.	No. of Lot or Part Lot.	Other Description.	P.O
934	Cowan, Hannah	N Metcalfe	pts 10, 11	W	1
95	Crane, Sarah E	E Colborne	pt 5	W	1
184	Campbell, Mary	S Front	M	W	1
203	Carruthers, A	N Front	rear G, H, J	F	1
445	Cameron, Kate F	A and K sy	71	W	4
446	Craig, F J	W Head	4	O	16
59	Durand, Jas F	S Front	pt N, O	F H	3
754	Daniels, Wm	E Head	S hf 6	F	1
914	Dewar, Wm	N Front	D, E, F	O	1
229	Davidson, Mary	A and K sy	33, 34	W	1
271	Evans, David	S Front	pt Q	T	1
272	Evans, Frank F	S Front	pt Q	T	1
983	Emens, Robert	A and K sy	45, 46	F	U S
312	Fitzpatrick, Thos	N Front	pt R	T	1
338	Gleed, Charles	N Front	pt S	T	1
1030	Haight, Samuel	A and K sy	63	F	Sparta
426	Heard, Charlotte	E Head	8, 9, 10	S	1
524	Lamotte, George	N Front	pt S	T	1
946	Lindsay, James	E Head	pt 2, 3	F	U S
605	Mallon, John	E Head	11	F	4
579	Moore, Druscilla	E Head	9	W	1
607	Mallon, Mary	N Metcalfe	11	W	1
609	Munn, Keziah C	E Colborne	4	W	1
617	Martyn, Joanna	A and K sy	1, 2	W	1
893	McIntyre, Hugh	N Front	E hf K	F	10
647	McGugan, Ann	Kit. sy of 22, 23	4, 5	W	1
662	McColl, Hugh	S Front	pt O	F	1
664	McBeth, Jane	N Front	rear of S	W	1
690	McCabe, Emma	E Caradoc	pt 4	W	1
728	O'Callaghan, John	S Front	pt R	F	8
73	O'Keefe, Patrick	E Caradoc	2	F	1
70	O'Dwyer, Patrick	Kittredge avenue	12	F	4
833	Sifton, Jemima	con 4	pt 22	W	1
648	Sickles, John	A and K sy	72	F	16
664	Smith, Emily	N Front	pt S	S	1

Roll No.	NAME.	Concession or Street.	No. of Lot or Part Lot.	Other Description.	P.O.
970	Walker, James	Kit. sy of 11	58, 59, 60	F	11
990	Worsfold, Annie	S Front	pt L	F	1
1001	Wright, James	N Front	pt G	F	1
635	Walsh, Catherine	E Head	3, 4	W	1

PART III.—Persons entitled to Vote at Elections to the Legislative Assembly ONLY.

58	Baker, Charles	E Head	pt 5	T H	5
63	Begg, William	S Front	pt T	F	1
204	Carruthers, John A	N Front	GH J	LS	1
229	Davidson, Donald	A and K sy	33, 34	LS	1
250	Donaldson, Stewart	S Front	M	WE	1
309	Frank, John	N Front	E hf L	WE	1
580	Moore, Wm J	E Head	9	LS	1
600	Mitchell, Angus W	S Front	pt J	T H	1
608	Mallon, Thos C	E Head	11	LS	1
614	Mann, Wesley	E Caradoc	pt 11	T H	1
757	Pike, Francis H	S Metcalfe	pt 12	LS	1
790	Richardson, H T	con 4	pt 23	LS	1
870	Stoddart, John	E Caradoc	pt 8	T H	1
933	Tuttle, Byron	N Metcalfe	pt 10	T H	1

Polling Sub-Division No. 6,

Comprising all that part of the Town lying East of Caradoc Street and South of Metcalfe Street. Polling Place at Caradoc Street School House.

PART I.—Persons entitled to Vote at BOTH Municipal Elections and Elections to the Legislative Assembly.

Roll No.	NAME.	Concession or Street.	No. of Lot or Part Lot.	Other Description.	P.O.
J 2	Asher, James	Laird sy	A B	T H	1
J 3	Almas, Adam	S English	12	T H	1
J 7	Adams, John S	N English	E hf 8	T H	1
J 8	Anderson, Jas	E Caradoc	3, 4	T H	1
J 468	Arscott, George	S Henry	6	T H	1
J 29	Baker, Andrew	S English	4	F H	1
J 30	Bravener, Geo	B sy	24	F H	1
J 31	Bond, John	B sy	5	F H	1
J 34	Barron, Geo H	S Metcalfe	plot	T H	1
J 43	Black, A J L	E Ellor	6	F H	1
J 47	Bradt, Sylvester	B sy	16	T H	1
J 48	Berdan, John	B sy	6	F H	1
J 50	Brady, Ambrose	S Concord	10	T H	1
J 51	Black, James	E Elm	26	T H	1
J 96	Barron, John	S Metcalfe	plot	T H	1
J 101	Barnes, John	S Metcalfe	2	F H	1
J 106	Calkins, John	N English	14	O H	1
J 107	Cooper, Chas	S English	E hf 8	T H	1
J 108	Campbell, D B	S English	W hf 8	T H	1
J 109	Campbell, Wm J	E Ellor	pt 9	T H	1
J 110	Condon, Thos	W Ellor	11, 12	F H	1
J 112	Cruikshanks, Jas	S English	13 to 16	T H	1
J 113	Cooper, William	N English	9	T H	1
J 115	Collins, James C	pt Richardson plot		T H	1
J 116	Clark, John	S Concord	13	T H	1
J 121	Cruikshanks, Geo	S English	13 to 16	F H	1
J 123	Carr, Thomas	B sy	15	T H	1
J 124	Cummer, Wm	S Metcalfe	plot	F H	1
J 178	Clark, Wm G	B sy	1	F H	1
J 186	Cummings, Wm	N Bella	27, 28, 29	T H	1
J 209	Deo, Daniel	W Ellor	N hf 20, gore	F H	1
J 215	Deo, James	N English	E pt 7	T H	1
J 240	Dyas, W J	E Caradoc	12	F H	1
J 255	Elwick, George	Munn's sy	15	F H	1
J 256	Emmons, John	Munn's sy	25	F H	1
J 257	Emmons, Henry	Munn's sy	17	F H	1
J 279	English, Jas H	10	pt N W 1 12	O H	1

Roll No.	NAME.	Concession or Street.	No. of Lot or Part Lot.	Other Description.	P.O.
J 282	Ferris, Conrad H.	10 pt 14.	11, 12, 13	T H.	1
J 283	Frank, Lucian	R & G sy	B 5, 6.	F H.	1
J 284	Fortner, Geo A L	B sy	9, 10	F H.	1
J 286	Ferguson, James	N Henry	14	F H.	1
J 287	Fortner, Lewis	B sy	S hf 9, 10	F H.	1
J 51	Fawcett, C B	E Elm.	26	F	1
J 318	Gill, Moses	Richardson plot	1	F H.	1
J 319	Gill, Michael	E Ellor	1, 2.	F H.	1
J 321	Gooderham, Jas	S English	5	T H.	1
J 323	Gillies, David	E Caradoc.	2	T H.	1
J 324	Gowrie, John	B sy	34, 35	F H.	1
J 325	Gill, John	E Ellor	pt 3.	T H.	1
J 326	Graham, J A	S Concord.	9	T H.	1
J 336	Grant, James D	B sy	27	T H.	1
J 335	Gibson, John W	B sy	36, 37, 38	F H.	1
J 381	Harris, Adam jr	E Ellor	7	F H.	1
J 382	Harrison, Thos S.	N English	pt 6.	T H.	1
J 383	Hamilton, Jno.	B sy	39, 40.	F H.	1
J 384	Hurd, E H	B sy	11	F H.	1
J 385	Harnett, Isaac	Munn's sy.	9, 10	T H.	1
J 387	Hamblly, John	con 10.	pt 13	F H.	1
J 388	Hunter, Robert	S Concord	11	O H.	1
J 396	Hurtson, Chas	N English	1	T H.	1
J 398	Hill, Wm F	N Concord	5, 6.	F H.	1
J 434	Hoskin, Fred G	S Henry	4, 5.	F H.	1
J 458	Harris, Adam sr	W Ellor.	pt 19, 20	F H.	1
J 468	Jarvis, Edward	S Henry	6	T H.	1
J 471	Johnston, Wm J.	N Canaan	14, 15.	F H.	1
J 487	Kion, Wm	con 10.	pt 13	O H.	1
J 503	Loynes, Jas S	N English	3	F H.	1
J 505	Loynes, John	N English	2	F H.	1
J 542	Moore, Archibald	con 10.	pt 13	F H.	1
J 544	Mihell, J H	K sy of 12.	39	T H.	1
J 547	Moore, Jas	Munn's sy.	7	F H.	1
J 548	Moore, E J	A & K sy	23, 22	F H.	1
J 557	Morrow, Jas.	N English	pt 11	T H.	1
J 558	Minor, Oliver	N Canaan	plot.	T H.	1
J 559	Morrow, Frank	S Metcalfe	plot.	T H.	1
J 561	Milner, Edward	N Concord	pt 5, 6	F H.	1
J 585	Moore, Wm C	B sy	3, 4	F H.	1
J 613	Mann, Levi	N Canaan	plot.	T H.	1
J 613	McWhinney, Jas.	N Henry	12, 13.	F H.	1
J 614	McWhinney, Samuel	N Henry	12, 13.	F	1
J 624	McEwen, Robert	S English	11	F H.	1

Roll No.	NAME.	Concession or tract.	No. of Lot or Part Lot.	Other Description.	P.O.
J 625	McLellan, A Y	S English	9, 10	F H	1
J 626	McWhinney, Jno	R & G sy, B	1, 2, 3, 4	F H	1
J 627	McQuade, Henry	S Henry	11	F H	1
J 654	McBride, Samuel	con 10	pt 13	T H	1
J 700	Newton, John	E Ellor	14	F H	1
J 702	Norris, George	N Henry	1, 2, 3	F H	1
J 737	Plank, Levi	con 10	pt 13	F H	1
J 739	Plank, Francis	Richardson plot	3, 4	F H	1
J 740	Plank, Sylvester	con 10	pt 13	F H	1
J 742	Putnam, L H	N English	10	F H	1
J 743	Plank, Samuel	B sy	23	F H	1
J 50	Price, Henry	S Concord	10	F	1
J 776	Root, Daniel	E Ellor	pt 3	O H	1
J 778	Robinson, John A	B sy	31, 32	F H	1
J 791	Richardson, R.	Richardson plot	N pt	F H	1
J 797	Robinson, Frank	B sy	43, 44	F H	1
J 825	Sellers, Wm	con 10	pt 13	O H	1
J 826	Scott, William	Munn's sy	18, 26	F H	1
J 829	Square, Thomas	R & G sy	C 1, 2, 5, 6, F 7	T H	1
J 831	Sickles, George	E Ellor	pt 10	T H	1
J 833	Stonehouse, Robert	B sy	33	F H	1
J 835	Sinclair, Donald B	con 10	pt 13	F H	1
J 836	Sickles, Geo W	W Ellor	18	T H	1
J 842	Sickles, Edward	S Metcalfe	8	T H	1
J 920	Thompson, Archibald	W Ellor	16, 17	F H	1
J 948	Upton, Frank	con 10	pt 13	T H	1
J 949	Urquhart, Geo jr	W Ellor	4	F H	1
J 960	Vennor, Thomas	K sy on 12	38	T H	1
J 963	Wallace, Wm	10	S W pt 14	O H	1
J 964	Wilmer, Edward	Munn's sy	11	F H	1
J 965	Wilkinson, Reuben	Munn's sy	1, 2, 3, 5, 6	F H	1
J 966	Watson, Wm G	E Ellor	5	F H	1
J 968	Winters, John	con 10	pt 14, 15	F H	1
J 975	Welch, Wm	Head of Concord		F H	1
J 969	Winterton, John	con 10	pt 13	F H	1
J 974	Wilkins, Jas	N English	6, 7	T H	1
J 992	Woodward, Frank	Munn's sy	12, 16	F H	1
J1025	Yeager, Henry	W Ellor	S pt 19	F H	1

PART II—Persons entitled to Vote at Municipal Elections ONLY.

Roll No.	NAME.	Concession or Street.	No. of Lot or Part Lot.	Other Description.	P.O.
33	Barron, Sophia	B sy	2	W	1
96	Corkindale, Janet	plot W	2	W	1
842	Corkindale, L	plot W	2	F	15
105	Corpron, Matilda	R & G sy	B 4	W	1
125	Clemeneg, Mary	N Canaan	16, 17, 18	W	1
186	Campbell, Malcolm	N Bella	27, 28, 29	F	2
613	Degraw, Eliza	N Canaan	plot	W	1
208	Davidson, Ann	B sy	13, 14	W	1
254	Duncan, Jas	10	pt 13	F	1
382	Donelly, P	N English	pt 6	F	1
107	Drew, James	S English	E hf 8	F	1
279	English, Eliza	E Caradoc	pt 6	F	1
34	Ellis, John M	S Metcalfe	plot	T	1
51	Ellis, W F	S Canaan	19 to 22	T	1
737	Fraser, Catharine	con 10	pt 13	W	1
323	Gardner, Robt	E Caradoc	2	F	1
948	Gallivan, Tim	con 10	pt 13	F	5
385	Harnett, Wm	Munn's sy	9, 10	F	1
397	Harrison, Sarah	B sy	7	F	1
441	Hill, David	con 10	pt 13	T	1
47	Hughes, Fred J	B sy	16	F	1
612	Haldane, R	S James	pt T	T	1
467	Jennings, J P	W Ellor	15	F	1
325	Lindsay, W B	E Ellor	pt 3	F	1
502	Lamont, Flora	E Ellor	pt 10	W	1
504	Loynes, Jas S & Co	N English	E pt A	F	1
507	LePage, Melvina	E Ellor	pt 9	W	1
2	Laird, W P	Laird sy	A B	F	1
396	Loynes, John J	N English	1	F	1
831	Lynam, John	E Ellor	pt 10	F	5
836	Nell, Thomas	W Ellor	18	F	2
106	Orchard, Geo	N English	14	F	1
776	Root, Christina	E Ellor	pt 3	F	1

POLLING SUB-DIVISION No. 6.

31

Roll No.	NAME.	Concession or Street.	No. of Lot or Part Lot.	Other Description.	P.O.
905	Shepherd, Simpson	10	pt 13	F	16
116	Smith, Jane	N English	9	W	5
960	Vennor, Eliza	K sy	38 on 12	W	1
955	Vail, Geo W	Laird sy	H	F	US
282	Wray, Wm	con 10	pt 14	F	1
441	Woodbury, Ed	con 10	pt 13	F	15
559	Woods, Charles	S Metcalfe	plot	F	1

109	Young, Ellen	con 4	pt 20	W	1
-----	--------------	-------	-------	---	---

PART III.—Persons entitled to Vote at Elections to the Legislative Assembly ONLY.

1	Almas, James	Richardson plot	6	T H	1
6	Anderson, Alex J	S sy	pt 26	LS	1

32	Bond, R W	B sy	5	LS	1
49	Berdan, Oscar	B sy	6	LS	1

111	Covey, Charles	N Henry	19, 20, 21	O H	1
114	Cooper, Wm jr	N English	9	LS	1
117	Clark, David	S Concord	13	LS	1

320	Gill, Albert E	E Ellor	1, 2	LS	1
322	Gooderham, Geo	S English	5	LS	1

380	Heron, Christopher	Richardson plot	8	F H	1
-----	--------------------	-----------------	---	-----	---

488	Kinder, Chas A	E Caradoc	pt 1, 6	F	1
489	Kinder, Albert E			F	1
490	Kinder, John H			F	1

542	Moore, George	Munn's sy	14	F H	1
545	Mihell, H E	Kit. sy of 12	39	LS	1
546	Mitchell, Alex	Blackburn sy	45	T H	1
549	Miles, George	R and G sy, B	7, 8	O H	1
629	McPhee, Angus	Blackburn sy	28	T H	1

700	Newton, John A	S English	16 to 19	F	1
701	Newton, Wm	E Ellor	14	LS	1

735	Plaxton, Edmund	Munn sy	27, 28	LS	1
736	Parker, Henry	R and G sy, A	5, 6	F H	1

Other
Description. P.O.
... O H.... 1
... L S.... 1
... L S.... 1

... L S.... 1
... T H.... 1

... O H.... 1

athroy, in the
within list con-
e last revised
ons for mem-
tute a correct
ed to vote at
all electors to
d therein, to
to law.

athroy,
athroy P. O.

*respecting
the fair
them
staying
in of
of the
alliance
ons of
regarding
not
I don't
to it
said*

CHRONOLOGICAL INDEX
1850-1854

30
OE

22

The Sheriff shall immediately, upon the receipt of his copies, cause one of them to be posted up in a conspicuous place in the Court House; the Clerk of the Peace, upon the receipt of his copies, shall cause one of them to be posted in a conspicuous place in his office; every Public or Separate School Head Master or Mistress shall in like manner post up one of his or her copies on the door of the School House and every Postmaster shall post up one of his copies in his Post Office.—
39 Vic. Chap. 11, Sec. 2.

