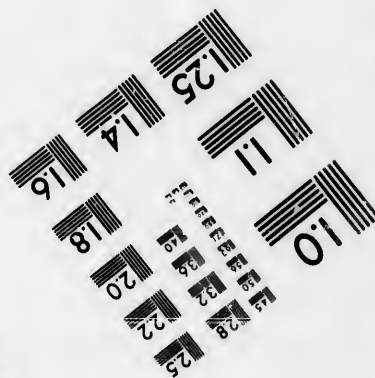
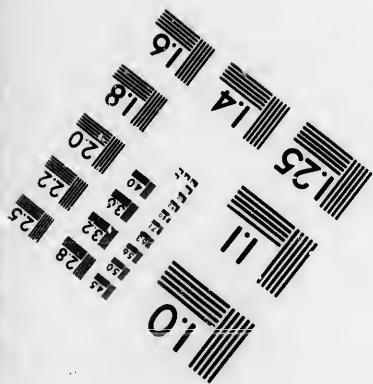
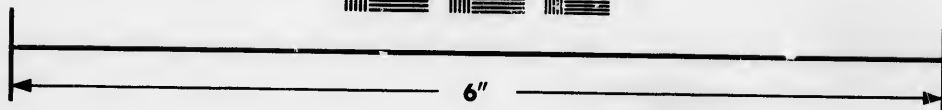
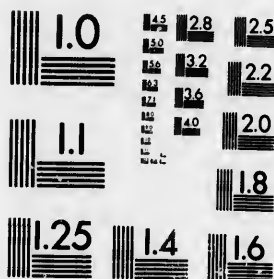


**IMAGE EVALUATION  
TEST TARGET (MT-3)**



**Photographic  
Sciences  
Corporation**

23 WEST MAIN STREET  
WEBSTER, N.Y. 14580  
(716) 872-4503

**CIHM/ICMH  
Microfiche  
Series.**

**CIHM/ICMH  
Collection de  
microfiches.**



Canadian Institute for Historical Microreproductions / Institut canadien de microreproductions historiques

**© 1986**

Technical and Bibliographic Notes/Notes techniques et bibliographiques

The Institute has attempted to obtain the best original copy available for filming. Features of this copy which may be bibliographically unique, which may alter any of the images in the reproduction, or which may significantly change the usual method of filming, are checked below.

L'Institut a microfilmé le meilleur exemplaire qu'il lui a été possible de se procurer. Les détails de cet exemplaire qui sont peut-être uniques du point de vue bibliographique, qui peuvent modifier une image reproduite, ou qui peuvent exiger une modification dans la méthode normale de filmage sont indiqués ci-dessous.

- |  |  |
|--|--|
| <input type="checkbox"/> Coloured covers/<br>Couverture de couleur   | <input type="checkbox"/> Coloured pages/<br>Pages de couleur   |
| <input type="checkbox"/> Covers damaged/<br>Couverture endommagée  | <input type="checkbox"/> Pages damaged/<br>Pages endommagées   |
| <input type="checkbox"/> Covers restored and/or laminated/<br>Couverture restaurée et/ou pelliculée  | <input type="checkbox"/> Pages restored and/or laminated/<br>Pages restaurées et/ou pelliculées  |
| <input type="checkbox"/> Cover title missing/<br>Le titre de couverture manque   | <input checked="" type="checkbox"/> Pages discoloured, stained or foxed/<br>Pages décolorées, tachetées ou piquées   |
| <input type="checkbox"/> Coloured maps/<br>Cartes géographiques en couleur   | <input type="checkbox"/> Pages detached/<br>Pages détachées  |
| <input type="checkbox"/> Coloured ink (i.e. other than blue or black)/<br>Encre de couleur (i.e. autre que bleue ou noire)   | <input checked="" type="checkbox"/> Showthrough/<br>Transparence   |
| <input type="checkbox"/> Coloured plates and/or illustrations/<br>Planches et/ou illustrations en couleur  | <input type="checkbox"/> Quality of print varies/<br>Qualité inégale de l'impression   |
| <input type="checkbox"/> Bound with other material/<br>Relié avec d'autres documents   | <input type="checkbox"/> Includes supplementary material/<br>Comprend du matériel supplémentaire   |
| <input type="checkbox"/> Tight binding may cause shadows or distortion<br>along interior margin/<br>La reliure serrée peut causer de l'ombre ou de la<br>distorsion le long de la marge intérieure   | <input type="checkbox"/> Only edition available/<br>Seule édition disponible   |
| <input type="checkbox"/> Blank leaves added during restoration may<br>appear within the text. Whenever possible, these<br>have been omitted from filming/<br>Il se peut que certaines pages blanches ajoutées<br>lors d'une restauration apparaissent dans le texte,<br>mais, lorsque cela était possible, ces pages n'ont<br>pas été filmées. | <input type="checkbox"/> Pages wholly or partially obscured by errata<br>slips, tissues, etc., have been refilmed to<br>ensure the best possible image/<br>Les pages totalement ou partiellement<br>obscurcies par un feuillet d'errata, une pelure,<br>etc., ont été filmées à nouveau de façon à<br>obtenir la meilleure image possible. |
| <input checked="" type="checkbox"/> Additional comments:/ [Printed ephemera] [3] p.<br>Commentaires supplémentaires:   |  |

This item is filmed at the reduction ratio checked below/  
Ce document est filmé au taux de réduction indiqué ci-dessous.

10X	12X	14X	16X	18X	20X	22X	24X	26X	28X	30X	32X
							✓				

The copy filmed here has been reproduced thanks to the generosity of:

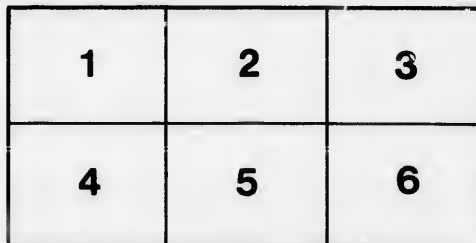
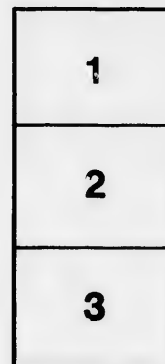
Library of the Public  
Archives of Canada

The images appearing here are the best quality possible considering the condition and legibility of the original copy and in keeping with the filming contract specifications.

Original copies in printed paper covers are filmed beginning with the front cover and ending on the last page with a printed or illustrated impression, or the back cover when appropriate. All other original copies are filmed beginning on the first page with a printed or illustrated impression, and ending on the last page with a printed or illustrated impression.

The last recorded frame on each microfiche sheet contains the symbol  $\rightarrow$  (meaning "CONTINUED"), or the symbol  $\nabla$  (meaning "END"), whichever applies.

Maps, plates, charts, etc., may be filmed at different reduction ratios. Those too large to be entirely included in one exposure are filmed beginning in the upper left hand corner, left to right and top to bottom, as many frames as required. The following diagrams illustrate the method:



L'exemplaire filmé fut reproduit grâce à la générosité de:

La bibliothèque des Archives  
publiques du Canada

Les images suivantes ont été reproduites avec le plus grand soin, compte tenu de la condition et de la netteté de l'exemplaire filmé, et en conformité avec les conditions du contrat de filmage.

Les exemplaires originaux dont la couverture en papier est imprimée sont filmés en commençant par le premier plat et en terminant soit par la dernière page qui comporte une empreinte d'impression ou d'illustration, soit par le second plat, selon le cas. Tous les autres exemplaires originaux sont filmés en commençant par la première page qui comporte une empreinte d'impression ou d'illustration et en terminant par la dernière page qui comporte une telle empreinte.

Un des symboles suivants apparaîtra sur la dernière image de chaque microfiche, selon le cas: le symbole  $\rightarrow$  signifie "A SUIVRE", le symbole  $\nabla$  signifie "FIN".

Les cartes, planches, tableaux, etc., peuvent être filmés à des taux de réduction différents. Lorsque le document est trop grand pour être reproduit en un seul cliché, il est filmé à partir de l'angle supérieur gauche, de gauche à droite, et de haut en bas, en prenant le nombre d'images nécessaire. Les diagrammes suivants illustrent la méthode.

THE NATIONAL  
L·O·C·K · W·A·S·H·E·R.



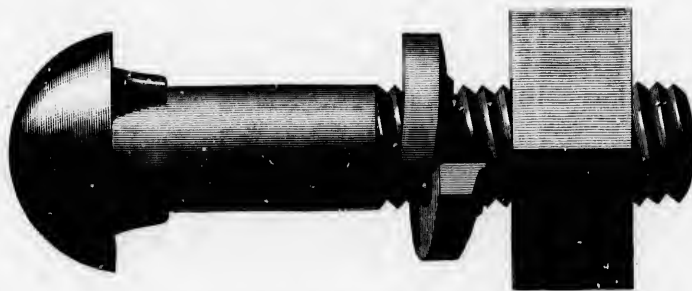
UNITED STATES PATENTS, MAY 29, 1882.

“ “ “ NOV. 3, 1885.

“ “ “ APRIL, 20, 1886.

PATENTED IN EUROPE.

PATENTED IN CANADA.



Rib of Washer always next to Nut.



Size for 3-4 In. R. R. Track Bolt.

[OVER.]

Mr. J. H. Barnett.  
Park View.  
Ont.

DEAR SIR :

In presenting you this circular, we ask your attention to a description of The National Lock Washer.

*THE NATIONAL LOCK WASHER* is the only practical improvement made in nut locks for many years.

*THE NATIONAL LOCK WASHER* has all the holding power of spring nut locks, combined with the more positive locking of nut by the rib.

*THE NATIONAL LOCK WASHER* is made of Tempered Steel, being harder than nut when nut is screwed up against washer, the *rib* is imbedded in nut (does not cut out metal in nut), thereby forcing metal of nut adjacent to bolt around threads of bolt, and so fastens nut that should the holding power of spring give out the nut would remain fast and could not possibly jar loose.

*THE NATIONAL LOCK WASHER* having been subjected to the severest tests during the past nine months, has proven its superiority to any nut lock now made.

*THE NATIONAL LOCK WASHER* can be used on any make of bolt or nut, a special bolt or nut not necessary; same bolt, nut and washer can be used as often as required.

*THE NATIONAL LOCK WASHER* will securely fasten loose-fitting nuts, or nuts on worn bolts that could not otherwise be used with safety.

*THE NATIONAL LOCK WASHER* will wear longer than any nut lock now in use, as it fastens itself in nut, thus preventing friction.

*THE NATIONAL LOCK WASHER* will securely fasten nuts on car and tender trucks, taking the place of and doing better work than the additional jam nut now in general use.

*THE NATIONAL LOCK WASHER* has been tested on frogs with the best results, fastening nuts that previous to their use could not be fastened for any length of time by a pin or in any other way.

*THE NATIONAL LOCK WASHER* is patented in the United States, Europe and Canada. The counsel of the Eastern and the Western Railroad Associations have in writing rendered an opinion that the National Lock Washer is not an infringement, and can be used with safety.

We respectfully request a trial of the National Lock Washer, as actual use will prove all the advantages claimed for it.

We should be pleased to send you, on application, a few of our Lock Washers, and have you subject them to the severest test possible.

We shall soon place on the market our Lock Washers for all sizes of bolts and nuts, for use on agricultural implements, wagons, carriages, bicycles, machinery, machine tools—in fact, on anything on which a bolt or nut is used.

THE NATIONAL LOCK WASHER COMPANY,

52 LAWRENCE STREET,

NEWARK, N. J.

