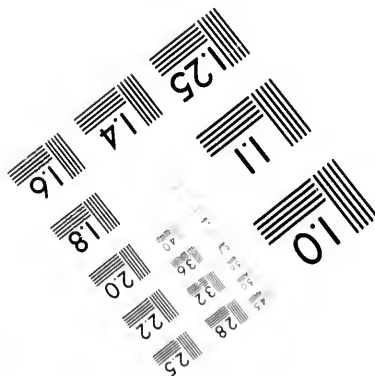
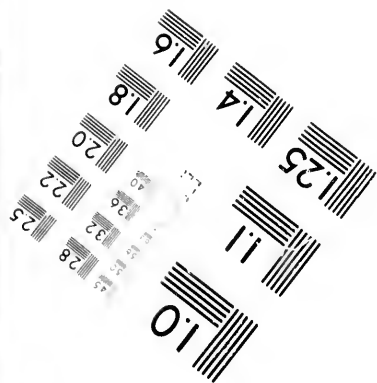
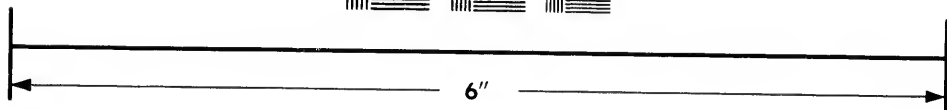
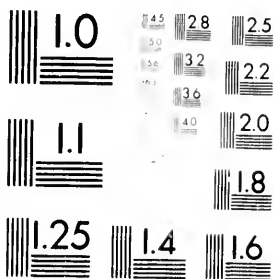


**IMAGE EVALUATION
TEST TARGET (MT-3)**



**Photographic
Sciences
Corporation**

23 WEST MAIN STREET
WEBSTER, N.Y. 14580
(716) 872-4503

24
28
32
36
40
18
20
22
25

**CIHM/ICMH
Microfiche
Series.**

**CIHM/ICMH
Collection de
microfiches.**

10



Canadian Institute for Historical Microreproductions

Institut canadien de microreproductions historiques

1980

Technical and Bibliographic Notes/Notes techniques et bibliographiques

The Institute has attempted to obtain the best original copy available for filming. Features of this copy which may be bibliographically unique, which may alter any of the images in the reproduction, or which may significantly change the usual method of filming, are checked below.

L'Institut a microfilmé le meilleur exemplaire qu'il lui a été possible de se procurer. Les détails de cet exemplaire qui sont peut-être uniques du point de vue bibliographique, qui peuvent modifier une image reproduite, ou qui peuvent exiger une modification dans la méthode normale de filmage sont indiqués ci-dessous.

- | | |
|--|--|
| <input checked="" type="checkbox"/> Coloured covers/
Couverture de couleur | <input type="checkbox"/> Coloured pages/
Pages de couleur |
| <input type="checkbox"/> Covers damaged/
Couverture endommagée | <input checked="" type="checkbox"/> Pages damaged/
Pages endommagées |
| <input type="checkbox"/> Covers restored and/or laminated/
Couverture restaurée et/ou pelliculée | <input type="checkbox"/> Pages restored and/or laminated/
Pages restaurées et/ou pelliculées |
| <input type="checkbox"/> Cover title missing/
Le titre de couverture manque | <input type="checkbox"/> Pages discoloured, stained or foxed/
Pages décolorées, tachetées ou piquées |
| <input checked="" type="checkbox"/> Coloured maps/
Cartes géographiques en couleur | <input checked="" type="checkbox"/> Pages detached/
Pages détachées |
| <input type="checkbox"/> Coloured ink (i.e. other than blue or black)/
Encre de couleur (i.e. autre que bleue ou noire) | <input checked="" type="checkbox"/> Showthrough/
Transparence |
| <input type="checkbox"/> Coloured plates and/or illustrations/
Planches et/ou illustrations en couleur | <input type="checkbox"/> Quality of print varies/
Qualité inégale de l'impression |
| <input type="checkbox"/> Bound with other material/
Relié avec d'autres documents | <input type="checkbox"/> Includes supplementary material/
Comprend du matériel supplémentaire |
| <input type="checkbox"/> Tight binding may cause shadows or distortion:
along interior margin/
La reliure serrée peut causer de l'ombre ou de la
distortion le long de la marge intérieure | <input type="checkbox"/> Only edition available/
Seule édition disponible |
| <input type="checkbox"/> Blank leaves added during restoration may
appear within the text. Whenever possible, these
have been omitted from filming/
Il se peut que certaines pages blanches ajoutées
lors d'une restauration apparaissent dans le texte,
mais, lorsque cela était possible, ces pages n'ont
pas été filmées. | <input type="checkbox"/> Pages wholly or partially obscured by errata
slips, tissues, etc., have been refilmed to
ensure the best possible image/
Les pages totalement ou partiellement
obscurcies par un feuillet d'errata, une pelure,
etc., ont été filmées à nouveau de façon à
obtenir la meilleure image possible. |
| <input type="checkbox"/> Additional comments:
Commentaires supplémentaires: | |

This item is filmed at the reduction ratio checked below/
Ce document est filmé au taux de réduction indiqué ci-dessous.

10X	12X	14X	16X	18X	20X	22X	24X	26X	28X	30X	32X
						✓					

The copy filmed here has been reproduced thanks to the generosity of:

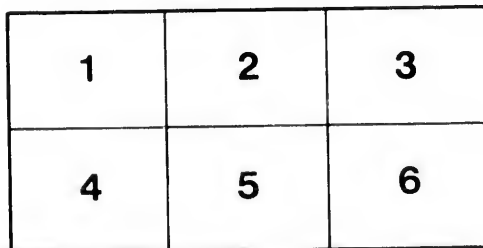
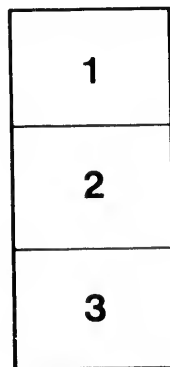
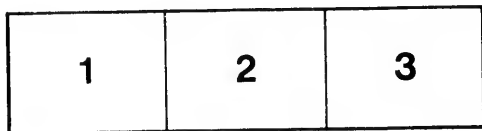
Izaak Walton Killam Memorial Library
Dalhousie University

The images appearing here are the best quality possible considering the condition and legibility of the original copy and in keeping with the filming contract specifications.

Original copies in printed paper covers are filmed beginning with the front cover and ending on the last page with a printed or illustrated impression, or the back cover when appropriate. All other original copies are filmed beginning on the first page with a printed or illustrated impression, and ending on the last page with a printed or illustrated impression.

The last recorded frame on each microfiche shall contain the symbol \rightarrow (meaning "CONTINUED"), or the symbol ∇ (meaning "END"), whichever applies.

Maps, plates, charts, etc., may be filmed at different reduction ratios. Those too large to be entirely included in one exposure are filmed beginning in the upper left hand corner, left to right and top to bottom, as many frames as required. The following diagrams illustrate the method:



L'exemplaire filmé fut reproduit grâce à la générosité de:

Izaak Walton Killam Memorial Library
Dalhousie University

Les images suivantes ont été reproduites avec le plus grand soin, compte tenu de la condition et de la netteté de l'exemplaire filmé, et en conformité avec les conditions du contrat de filmage.

Les exemplaires originaux dont la couverture en papier est imprimée sont filmés en commençant par le premier plat et en terminant soit par la dernière page qui comporte une empreinte d'impression ou d'illustration, soit par le second plat, selon le cas. Tous les autres exemplaires originaux sont filmés en commençant par la première page qui comporte une empreinte d'impression ou d'illustration et en terminant par la dernière page qui comporte une telle empreinte.

Un des symboles suivants apparaîtra sur la dernière image de chaque microfiche, selon le cas: le symbole \rightarrow signifie "A SUIVRE", le symbole ∇ signifie "FIN".

Les cartes, planches, tableaux, etc., peuvent être filmés à des taux de réduction différents. Lorsque le document est trop grand pour être reproduit en un seul cliché, il est filmé à partir de l'angle supérieur gauche, de gauche à droite, et de haut en bas, en prenant le nombre d'images nécessaire. Les diagrammes suivants illustrent la méthode.

LIST OF MISSIONS

OF THE

CHURCH OF ENGLAND

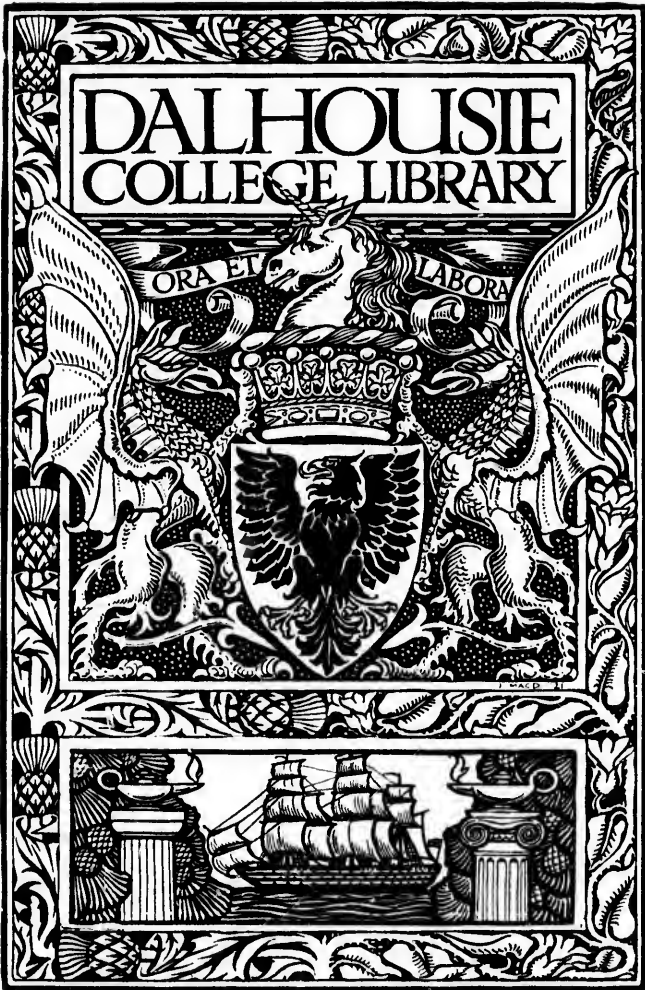
IN

NEWFOUNDLAND

AND

LABRADOR.

1877.



N

WITH
MEM
LAY
THE

LIST OF MISSIONS
OF THE
CHURCH OF ENGLAND
IN
NEWFOUNDLAND
AND
LABRADOR,

WITH A TABULAR STATEMENT OF THE NUMBER OF INHABITANTS,
MEMBERS OF THE CHURCH OF ENGLAND, CLERGY, LICENSED
LAY READERS, CHURCHES, SCHOOL CHAPELS, CEMETERIES, AND
THE APPROXIMATE EXTENT OF EACH MISSION, TO ACCOMPANY
A MAP OF THE DIOCESE.

COMPILED IN 1877,
WITH THE ASSISTANCE OF THE CLERGY.

BY ONE OF THEIR NUMBER.

28181 June 2/33

BV
25

P R E F A C E.

The Diocesan Map of the Church of England in Newfoundland, to which this Handbook refers, was commenced with the approval of the late Dr. Feild, when Lord Bishop of Newfoundland, in the latter part of the year 1873. Partly through difficulties in postal communication between my own Mission and other parts of Newfoundland, and partly from my time being much occupied in parochial work, the publication of the Map has been delayed until the present year.

This delay has not, however, been without advantage, having afforded me opportunities of obtaining information during Visitation Voyages in the Church Ship, when it has been my privilege to accompany the Bishop.

Yet, in spite of these advantages and of the assistance so readily and kindly afforded by my brother Clergy, for which I take this opportunity of rendering to them my best thanks, I fear that many mistakes and omissions will be found both in the Map and Handbook.

For such faults, I can only ask the indulgence of those who consult either one or the other, and request that I may be informed of them, with a view to their being corrected, should any copies be called for at a future time.

It will, I trust, be remembered that my aim has been to take account for practical purposes of the work of the Church of England. I have neither had opportunity to ascertain, nor space to recount, the large amount of work, both religious and educational, which is being carried on by the Roman Catholics and the Wesleyans in the Colony of Newfoundland.

BV
2500
.N54
C97

It was originally intended to place the information contained in this Handbook upon the Map itself, but the present plan was finally adopted for the following reasons : firstly, on account of the large amount of space upon the Map, which the list of Settlements would have occupied ; secondly, on account of the expense of printing being less than that of engraving ; thirdly, on account of the variable nature of the statistical information, which, it is hoped, Clergymen in charge of Missions may find it more convenient to keep up to date in the Handbook, than would have been the case with Tables upon the Map.

At the Session of the Synod held this year, a Committee was appointed to define the boundaries of Missions, and I very much regret that I am not able to avail myself of their labours, which are not yet finished, but it does not seem desirable to delay any longer the completion of the Work.

To the Right Rev. Bishop Kelly, D.D., when Coadjutor Bishop of Newfoundland, and to the Rev. G. M. Johnson, I am indebted for much assistance in determining the general plan of the Map, and the form of the Statistical Information.

To the courtesy of Alexander Murray, Esq., F.G.S., C.M.G., I am indebted for all the details of the interior of the country, which he allowed me to have copied from his Geological Survey of Newfoundland ; and my best thanks are due to Sir Bryan Robinson, of the Supreme Court of Newfoundland, for drawing up the General Information upon the Map concerning the Colony ; also to J. Delaney, Esq., P.M.G., in St John's, for Statistics concerning the weather.

It will be a cause for much thankfulness to me if this Map and Handbook are found of any service in carrying on the work of the Church of England in Newfoundland and Labrador, a work with which the names of the Society for the Propagation of the Gospel in Foreign Parts and our much loved and lamented Bishop Feild, will for ever be associated.

J. J. C.

EXPLANATION OF TABLES.

S P. G. after a Mission shows that it is mainly supported by the Society for the Propagation of the Gospel in Foreign Parts.

The year placed in brackets after a Deanery or a Church, indicates that the Deanery was formed or the Church built in such year. 2nd or 3rd after a Church means that it is the 2nd or 3rd Church built upon the same site.

In the first column, Roman Numerals refer to the Mission, and Arabic Numerals to the Settlements in each Mission.

Licensed Lay-Readers are Laymen licensed by the Bishop to conduct certain services, and to read sermons; the work of the Church of England in Newfoundland is largely indebted to their assistance, which is usually given almost gratuitously.

In the column for School Houses, *cc* indicates that the School is maintained by the Colonial and Continental Church Society, and an asterisk shows that the School House is used also for Divine Service.

N after the name of a Settlement, shows that the population of adjoining Settlements is included.

The extent of a Mission in Sea Miles is intended to show approximately the distance to be traversed in visiting the chief Settlements, when proceeding from one end to the other of a Mission. If considered in conjunction with the number of Members of the Church of England, it affords some means of estimating the relative amount of difficulty in working a Mission.

'Chapel' means a building used solely for Divine Service, but not consecrated.

In St. John's there is a Theological College for preparing Candidates for Holy Orders in the Church of England; also a Church of England Academy, where a liberal education is provided for boys, and Pupil Teachers are trained for the position of Schoolmasters.

There are two Orphanages of the Church of England in St. John's, one for boys and one for girls, open to any orphans in the Diocese above the age of six and under twelve.

A Synod of the Church of England in Newfoundland is held biennially in St. John's.

a. Of this number 16,719 are Roman Catholics.

a1. It is difficult to apportion the numbers exactly to each church in St. John's.

The Cathedral is the third church built upon the same site.

b. R. C. 1473.

Torbay is at present (1877) in charge of the Vice-Principal of the Theological College in St. John's.

c. R. C. 368.

For some years past Topsail has been worked as a separate Mission. The Missionary in Fox Trap and Long Pond was supported by the S. P. G.

d. Including Manuel's.

e. Including Holyrood, South Side.

DEANERY OF AVALON (1841.)

Reference No on Map.	NAME OF MISSION. [N. after a Name shows that the Neighbourhood is included.]	Population.	Members of the Church of England.	No. of Clergy.	Licensed Lay Readers.	School Houses.	Consecrated Cemeteries.	Approximate extent of Mission in Sea Miles.
I.—ST. JOHN'S (1703). 7								
1.	The Cathedral. S. John Bapt. (1850) 3rd - - - - -	24969 ^a	4727 ^d	4	...	2	1	...
2.	S. Thomas' Church (1840) S. P. G. -			2	...	1 ^{cc} & 1
3.	Quidi Vidi. Christ Church (1841) -			1	...	1
4.	South Side. S. Mary's Church (1859) -			1	...	1
Total - - - - -		24969	4727	8	...	6	1	7
II.—POUCH COVE (1840) S. P. G.								
1.	Torbay. S. Nicholas' Church (1841)	1744 ^b	195	1	2	9
2.	Pouch Cove. S. Thomas' Ch. (1848) 2nd - - - - -	894	310	1	...	1	1	...
Total - - - - -		2638	505	1	...	2	3	9
III.—PORTUGAL COVE (1819) S. P. G. 8								
1.	Portugal Cove. S. Peter's Ch. (1854) 2nd - - - - -	1003	441	1	1	1 ^{cc}	1	...
2.	Broad Cove. S. Philip's Ch. (1848)	352	307	1	1	...
3.	Bell Isle, Lance Cove. S. Mary. (1843) - - - - -	576 ^c	203	...	1	1	1	...
Total - - - - -		1931	951	1	2	3	3	8
IV.—TOPSAIL S. P. G. 14								
1.	Topsail. S. John Evangelist (1861)	785 ^d	321	1	...	1	1	...
2.	Fox Trap and Long Pond. St. Paul's. (1848) - - - - -	1047	935	...	1	2	1	...
3.	Hopewell. All Saints' Church (1875)	930 ^e	387	...	1	2	1	...
Total - - - - -		2762	1643	1	2	5	3	14

The Mission in Petty Harbour is self-supporting.

- f.* Including 618 at Fermense.
Many fishermen come to Renewes from Conception Bay during the summer.
- g.* All R. C.
- h.* The first Church was dedicated to the Holy Trinity in 1827.

At English Cove, in Collier's Bay, there is 10 acres of Church land.

- a.* Between Holyrood, North and Brigus inclusive, there are 4961 R. C.; and in Brigus (with Bull Cove), 1122 Wesleyans.
- b.* Including Cupids.
- c.* Including Gould's and Juniper Stump.
- d.* 483 R. C.
- e.* At Hibb's Hole.

Reference No. on Map.	NAME OF MISSION. [N. after a Name shows that the Neighbourhood is included.]	Population.	Members of the Church of England	No. of Clergy.	Licensed Lay Readers.	School Houses.	Consecrated Cemeteries.	Approximate extent of Mission in Sea Miles.
V.—PETTY HARBOUR.								
1.	S. Andrew's Church (1848) - -	1034	334	1	1	1 ^{cc}	1	1

VI.—FERRYLAND (1792). S. P. G. 27								
1.	Bay of Bulls Holy Trinity Ch. (1864)	2755	54	1	...
2.	Ferryland. Christ Church (1863) ^h -	1604	52	...	1	1	1	...
3.	Aquaforte. S. Phillip's Church (1857)	239	64	1	1	1	1	...
4.	Renews. S. Bartholomew's Ch. -	1470 ^f	3
	Renews to Cape Race - - -	228 ^g
	Total - - -	6296	173	1	2	2	3	27

DEANERY OF CONCEPTION BAY (1800.)

I—BRIGUS (1812). S. P. G. 13								
1.	Brigus and N. S. George's Ch. (1845)	6756 ^e	657	1	1	1 ^{cc}	1	...
2.	Burnt Head. S. Augustine of Canterbury's Ch. (1869) - -	1330 ^b	258	1	1	...
3.	Salmon Cove. All Saints' Ch. (1864)	557	366	1	1	...
4.	Clark's Beach - - - -	931 ^c	371	...	1	1*
	Total - - -	9574	1652	1	2	4	3	13

II.—PORT DE GRAVE (). S. P. G. 9								
1.	Port de Grave. S. Luke's Ch. (1827)	1252	912	1	...	1 ^{cc} & 1 ^e	1	...
2.	Barenced. S. Mark's Ch. (1860) 2nd	723	650	1	3	...
3.	North River - - - -	737 ^d	233	1
	Total - - -	2712	1795	1	...	4	4	9

f. At Big Pond.

Harbour Grace, South Side, is with Bryant's Cove worked as a separate Mission.

g. In Harbour Grace there are 2870 R. C. and 1140 Wesleyans.

a. Between Carbonear and Bay de Verd there are 6693 inhabitants, nearly all of whom are Wesleyans.

Reference No. on Map.	NAME OF MISSION. [N. after a Name shows that the Neighbourhood is included.]	Population.	Members of the Church of England.	No. of Clergy.	Licensed Lay Readers.	School Houses.	Consecrated Cemeteries.	Approximate extent of Mission in Sea Miles.
III.—BAY ROBERTS (1818). S. P. G. 3								
1.	Coley's Pt. S. John Ev. Ch. (1861)	980	884	1	1	...
2.	Bay Roberts. S. Matthew's Church (1827-61) 2nd - - - - - and Spaniard's Bay Pond - - - - -	2367	1485	1	...	2	1	...
	Total - - - - -	3347	2369	1	...	4	2	3
IV.—UPPER ISLAND COVE (1840). S. P. G. 7								
1.	Spaniard's Bay. Holy Trinity Ch. (1843) - - - - -	1331	991	...	1 ^{cc} & 1 ⁷	1	1	...
2.	Bishop's Cove. S. John's Ch. (1827)	415	389	1	...
3.	Upper Island Cove. S. Peter's Ch. (1827) - - - - -	1096	911	1	...	1	1	...
	Total - - - - -	2842	2291	1	1	3	3	7
V.—HARBOUR GRACE (1767). S. P. G.								
1.	Bryant's Cove. S. Andrew's Church (1855) - - - - -	303	204	1	1	4
2.	Harbour Grace, South Side. S. Peter's (1873) - - - - -	749	458	1	...	1 & 1 ^{cc}	1	...
3.	Harbour Grace. S. Paul's Church (1767—1840) 3rd - - - - - Harbour Grace. Christ Church (1876)	5500	1800	1	...	1	1	8
4.	Musquito - - - - -	337	54	1*
	Total - - - - -	6899 ⁹	2516	2	...	5	3	12
VI.—CARBONEAR (1767). S. P. G. 1								
1.	Carbonear. S. James' Ch. (1827) 2nd Perry's Cove - - - - -	5064	837	1	...	1	1	...
	Total - - - - -	5064	837	1	...	2	1	1
			6698 ^a					

- b.* In the neighbourhood of Old Perlican and Grate's Cove, chiefly Wesleyan.

The Mission of Heart's Content is self-supporting.

- e.* In the neighbourhood of Hant's Harbour, chiefly Wesleyan.

The first Church at New Perlican was dedicated to St. Mark, in 1832.

- d.* The Mission of Random has been served partly from Heart's Content, partly from Trinity, W., partly from New Harbour, and is temporarily included in the last-named Mission.
- e.* At Norman's Cove and Chance Cove.
- f.* At Norman's Cove and Chance Cove unconsecrated, but fenced.
- g.* With Random this Mission would be 100 miles in extent.

Reference No. on Map.	NAME OF MISSION. [N. after a Name shows that the Neighbourhood is included.]	Population.	Members of the Church of England.	No. of Clergy.	Licensed Lay Readers.	School Houses.	Consecrated Cemeteries.	Approximate extent of Mission in Sea Miles.
VII—BAY DE VERD (1825). S. P. G.								
1.	Bay de Verd. S. Barnabas' Ch. (1857)							
	2nd - - - - -	741	357	1	1	1	1	...
2.	Grate's Cove. S. Luke's Ch. (1861) -	565	150	...	1	1	...	10
	Total - - -	1306	507	1	2	2	1	10
		1348 ^b	9					

DEANERY OF TRINITY BAY (1735.)

I.—HEART'S CONTENT ().									23
		908 ^c	4						
1.	Scilly Cove and Turk's Cove. S. Luke's Church (1863) 2nd -	804	429	...	1	1	1	...	
2.	New Perleau. S. Mark's Ch. (1863) 2nd - - - - -	509	463	...	1	1	1	...	
3.	Heart's Content. S. Mary's Ch. (1846) 2nd - - - - -	1024	908	1	1	1 ^{cc}	1	...	
4.	Heart's Delight and N. S. Matthew's Church (1863) - - -	466	374	...	1	1	1	...	
5.	Shoal Harbour and N. (1874) -	166	142	1*	
	Total - - -	3877	2320	1	4	5	4	23	
II.—NEW HARBOUR (). S. P. G.									25 ^g
1.	Green's Harbour and N. - - -	391	178	...	1	1	
2.	New Harbour. S. George's Church (1816 and 1864) 2nd - - -	348	320	1	...	1	1	...	
3.	Dildo and N. - - - - -	707	514	...	2	2 ^e	1 ^f	...	
4.	^d Heartsease Hr. Random and N -	516	386	...	1	1*	
5.	^e S.W. ARM. Random - - -	522	213	
6.	^d Smith's Sound. Random I ^d and N.	795	249	1*	
	Total - - -	3309	1860	1	4	6	2	25	

The Mission of Trinity was divided in 1876 into Trinity E. and Trinity W.

Reference No. on Map.	NAME OF MISSION. [N. after a Name shows that the Neighbourhood is included.]	Population.	Members of the Church of England.	No. of Clergy.	Licensed Lay Readers.	School Houses.	Consecrated Cemeteries.	Approximate extent of Mission in Sea Miles.	
III.—TRINITY, W. (1735).									23
1.	Ireland's Eye - - - -	150	150	...	1	1*	
2.	British Harbour (Church not consecrated) - - - -	190	162	...	1	1	
3.	New Bonaventure and N. S. John's Church (1869) - - - -	252	251	...	1	1	1	...	
4.	Old Bonaventure. S. Luke's Church (1857) . - - - -	150	145	
5.	Trouty. S. Matthew's Church (1853)	206	201	...	1	1	1	...	
6.	Cuekold's Cove - - - -	208	111	...	1	
7.	Trinity. S. Paul's Church (1825) -	991	777	1	2	2 & 1 ^{cc}	1	...	
	Total - - - -	2147	1797	1	7	7	3	23	
IV.—TRINITY, E. (1735). S. P. G.									3
1.	Ship Cove. Christ Church (1869) -	824	695	1	1	1	1	...	
2.	Salmon Cove. Church (1825)	478	417	...	1	1	1	...	
3.	English Harbour. S. Silas' Ch. (1825)	380	220	...	1	1	1	...	
	Total - - - -	1682	1332	1	3	3	3	3	
IV.—CATALINA (1832). S. P. G.									6
1.	Ragged Harbour and N. - - - -	242	15	
2.	Catalina. S. Peter's Church (1873) -	1420	701	1	...	1	1	...	
3.	Little Catalina and N. - - - -	296	88	1*	
	Total - - - -	1958	804	1	...	2	1	6	

(a). There is a Church and Cemetery completed, not yet consecrated (1875).

a. 1722 Roman Catholics, 460 Wesleyans.

DEANERY OF BONAVISTA BAY (1866.)

Reference No. on Map.	NAME OF MISSION. [N. after a Name shows that the Neighbourhood is included.]	Population.	Members of the Church of England.	No. of Clergy.	Licensed Lay Readers.	School Houses.	Consecrated Cemeteries.	Approximate extent of Mission in Sea Miles.	
I.—BONAVISTA (1742) S. P. G.									19
1.	Bird Island Cove and N. (a) -	829	173	
2.	Bonavista. Christ Church (1864) 2nd	2992	1255	1	...	1 & 1 ^{cc}	1	...	
3.	Newman's Cove and N. -	322	119	1	
4.	Upper Amherst Cove and N -	165	155	1	
Total -		4308	1702	1	...	4	1	19	
II.—KING'S COVE (1822). S. P. G.									45
1.	King's Cove. St. James' Church -	772	221	1	1	1	1	...	
2.	Keels. St. Philip's Church -	707	282	...	1	1	1	...	
3.	Red Cliffe. S. Michael's Ch. (1857)	93	79	...	1	...	1	...	
4.	Tickle Cove - - - -	275	91	1*	
5.	Open Hall - - - -	220	85	1*	
6.	Indian Arm - - - -	286	118	...	1	1*	
7.	Seal Cove - - - -	163	105	...	1	1*	
8.	Goose Bay - - - -	784	318	...	1	1*	
Smaller Settlements in N. -		299	118	
Total -		3599 ^a	1417	1	6	7	3	45	
III.—SALVAGE (1822). S. P. G.									23
1.	Salvage. St. Stephen's Ch. (1865) 2nd	470	470	1	...	1 ^{cc}	2	...	
2.	Salvage Bay and N. School Chapel (1870) - - - -	260	212	...	1	1*	1	...	
3.	Flat Island and N. School House -	258	194	...	1	1*	2	...	
4.	Gooseberry Island and N. School House - - - -	241	223	...	1	1*	
Total -		1662	1185	1	3	4	5	23	

(b.) Including Doting Cove, Musgrave Harbour, to Rocky Bay.

Reference No on Map.	NAME OF MISSION. [N. after a Name shows that the Neighbourhood is included.]	Population.	Members of the Church of England.	No. of Clergy.	Licensed Lay Readers.	School Houses.	Consecrated Cemeteries.	Approximate extent of Mission in Sea Miles.	
IV.—GREENSPOND (1819). S. P. G.									30
1	Fair Islands. St. Barnabas Church (1846)	209	209	...	1	1	1	...	
	Settlements in N. of Fair Islands	562	348	
2.	Greenspond and N. St. Stephen's Church (1846-1860) 2nd	1527	945	1	...	1 ^{cc}	1	...	
3.	Pool's Islands. St. James' (1865) 2nd	670	542	1	...	
4.	Swain's Island and N. St. John Baptist (1861) 2nd	491	260	1 ^{cc}	1	...	
5.	Pinchard's Island and N. St. Stephen (1853) 2nd, with Mainland in C. Freels	1005	525	2	1	...	
	Total	4464	2829	1	1	5	5	30	

DEANERY OF NOTRE DAME BAY (1848.)

I—FOGO (1823). S. P. G.									35
1.	Indian Islands and N. (b)	375	224	...	1	1*	
2.	Seldom Come-by and N.	391	239	...	1	1*	
3.	Fogo Harbour and N. St. Andrew's Church (1841) 2nd	1953	940	1	2	2 & 1 ^{cc}	1	...	
4.	Barred Islands. St. John Ev. (1853)	867	622	...	1	1	1	...	
	Total	4086	2025	1	4	6	2	35	

II.—HERRING NECK (1851) S. P. G.									32
1.	Gander Bay	170	162	1	
2.	Change Islands. St. James' Church (1849)	716	466	...	1	1	1	...	
3.	Herring Neck. St. Mary (1849)	1009	866	1	2	2	1	...	
	Total	1895	1494	1	3	4	2	32	

a. 1491 Wesleyans.

There is a Saw Mill at Dominion Point.

b. The members at Bett's Cove Mine have increased rapidly since the census was taken in 1874; it is supposed there are 300 Church of England Members now. Extensive mining operations for copper and nickel are being carried on at Bett's Cove and Tilt Cove.

Reference No. on Map.	NAME OF MISSION. [N. after a Name shows that the Neighbourhood is included.]	Population.	Members of the Church of England.	No. of Clergy.	Licensed Lay Readers.	School Houses.	Consecrated Cemeteries.	Approximate extent of Mission in Sea Miles.
III.—TWILLINGATE (1817) S. P. G. 12								
1.	Twillingate. St. Peter's Church (1846) 2nd - - - -	3071 ^a	1537	1	2	1 ^{cc} 2* 2	2	...
2.	Moreton's Harbour and N. St. Thomas Church (1846) - - - -	831	257	1	1	...
3.	Tizzard's Harbour. St. John Ev. (1846) - - - -	298	69	1	...
Total - - - -		4200	1863	1	2	6	4	12
IV.—EXPLOITS (1871.) S. P. G. 57								
1.	Exploits Burnt Island and N. All Saint's Church (1865) - - - -	811	159	1
2.	Dominion Point, Exploits Bay and N.	313	144	1*
3.	Leading Tiekles and N. - - - -	835	336	1*	1	...
4.	Ward's Harbour and N. Christ Ch. (1853) - - - -	1263	147
Total - - - -		3222	786	1	...	2	1	57
V.—TILT COVE (1873.) S. P. G. 96								
1.	Nipper's Harbour and N. Mark Evangelist (1857) - - - -	400	181	...	1	1	1	...
2.	Bett's Cove Mine and N. - - - -	26	10	1	2
3.	Indian Burying Place and N. - - - -	200	153	1*	2	...
4.	Round Harbour - - - -	101	70	1*	1	...
5.	Tilt Cove Mine. Christ Ch. (1873)	543	198	1	1	1	1	...
6.	Shoe Cove and N. St. James' (1865)	203	76	...	1	1*	2	...
Total - - - -		1563	788	2	5	5	7	96

b. Cemeteries ready for Consecration.

a. 366 Roman Catholics.

a. Roman Catholics living in Trepassey Bay, St. Mary's Bay, and the East side of Placentia Bay, between Cape Race and Mooney's Cove.

b. Included in the above.

c. At Sound Island 195 Wesleyans.

Reference No. on Map.	NAME OF MISSION.	Population.	Members of the Church of England	No. of Clergy.	Licensed Lay Readers.	School Houses.	Consecrated Cemeteries.	Approximate extent of Mission in Sea Miles.	
	VI.—WHITE BAY (1864). S. P. G.								180
1.	Harbour Round and N. - - -	265	49
2.	Seal Cove and N. - - -	69	45	1*	1
3.	Middle Arm - - -	42	42	1*	1
4.	Bear Cove, Western Arm and N. -	54	54
5.	Western Cove and N. (Church ready for Consecration) - - -	82	82	1	1
6.	Ever Head - - -	54	54	1
7.	Sop's Island - - -	60	60	1
8.	Little Coney Arm - - -	45	45	<i>b</i>
9.	Grand Vache - - -	40	40	<i>b</i>
10.	Harbour Deep and N. - - -	82	80	<i>b</i>
11.	Hooping Harbour and Canada -	42	21
12.	Englée and N. - - -	101	43	1*	1
13.	Southern Groais Island - - -	110	30
14.	Hilliard's Harbour to Fichot -	367 ^a	1
	Total - - -	1413	646	1	...	3	6	180	

DEANERY OF PLACENTIA BAY (1789.)

	I.—HARBOUR BUFFET (1848). S. P. G.								95
1.	Great Placentia Church - - -	773 ^b	11	1
2.	Little Harbour and N. - - -	218	108
3.	Arnold's Cove - - -	77	58	1*	1
4.	Woody Island (Church not Consecrated, erected in 1844) - - -	401 ^c	67	1*	1
5.	Spencer's Cove and N. - - -	333	90	1*	1
6.	Ragged Islands - - -	89	80

d. Including 246 R. C. at Red Island.

- a.* 352 Wesleyans.
- b.* As far as Beau Bois, including Mortier Bay.
- c.* Chiefly Roman Catholics.
- d.* 1286 Wesleyans.
- e.* Ready to be Consecrated.

Reference No. on Map.	NAME OF MISSION.	Population.	Members of the Church of England.	No. of Clergy.	Licensed Lay Readers.	School Houses.	Consecrated Cemeteries.	Approximate extent of Mission in Sea Miles.
I.—HARBOUR BUFFET— <i>continued.</i>								
7.	Harbour Buffet and N. St. Paul's Church (1843)	523	450	1	1	...	1	...
8.	Merashcen and N.	477 ^d	23
9.	Jack's Beach and N.	161	64	1
10.	Isle of Valen. St. John's Ch. (1843)	785	88	1	1	...
11.	Paradise Sound and N.	485	65
12.	Baine Harbour and N.	266	111	...	1	1*
13.	Oderin. Church of St. Michael and All Angels (1855)	421	93	...	1	1	1	...
	Total	4236	1338	1	3	7	7	95
II.—BURIN (1791) S. P. G. 54								
1.	Flat Islands and N.	571 ⁿ	65
2.	Rock Harbour and N. ^b S. St. Peter's Church	246	77	1	1 ^e	...
3.	Mortier Bay and N.	681 ^e	93	1*	1 ^e	...
4.	Port au Bras	236 ^c	134	1	1 ^e	...
5.	Burin. Holy Trinity Church (1850)	2315 ^d	160	1	...	1	1	...
6.	Great St. Lawrence. St. Matthew's Church (1855)	618	178	...	1	1	1 ^{cc}	...
	Lawn and N.	279 ^e
	Total	4977	1007	1	1	5	5	51
III.—LAMALINE () S. P. G.								
1	S. Mary the Virgin (1855)	927	541	1	...	1	1	1

f. S. Pierre and Miquelon are French Possessions, and no return has been obtained of the number of inhabitants.

A large number of French vessels fish from S. Pierre, on the Bank of that name, and on the Newfoundland Grand Bank.

At S. Pierre there is a large telegraph establishment of the Company, the officers of which, with their family, form a congregation of about 130, who are building a Church (1876), and who support a Clergyman of the Diocese of Newfoundland.

g. Chiefly Wesleyans.

The Mission of Belleoram is self-supporting.

DEANERY OF FORTUNE BAY (1841.)

Reference No. on Map.	NAME OF MISSION. [N. after a Name shows that the Neighbourhood is included.]	Population.	Members of the Church of England.	No. of Clergy.	Licensed Lay Readers.	School Houses.	Consecrated Cemeteries.	Approximate extent of Mission in Sea Miles.
I.—S. PIERRE (1875.)								
	Fortune, Grand Beach and N.	1790 ⁹	82	f	about 130	1	...	1*
II.—HARBOUR BRITON (1848). S. P. G. 91								
1.	Garnish	211	207	...	1	1*	1	...
2.	Bay of Argent	279	199	...	1	1*	1	...
3.	Harbour Mille (1867)	299	247	...	1	1*	1	...
4.	Long Harbour (1871)	204	177	...	1	1*
5.	Rencontre and N. (1866)	163	124	1*	1	...
6.	Lalley Cove (1866)	71	67	1*	1	...
7.	English Harbour. S. Thomas' Ch. (1874)	359	277	...	1	1	1	...
8.	Coomb's Cove and N. (1867)	122	92	1*	1	...
9.	Great Harbour	96	96	1	...
10.	Miller's Passage	98	35	1	...
11.	Little Bay	95	82	1	...
12.	Jersey Harbour (1871)	135	135	1*	1	...
13.	Harbour Briton. S. Bartholomew's Ch. (1848)	386	252	1	...	2	1	...
14.	Brunet Island (1853)	99	93	...	1	1*	1	..
15.	Sagona Island (1861)	288	213	...	1	1*
	Total	2905	2294	1	7	13	13	91
III.—BELLEORAM. 25								
1.	Bellcoram. Ch. of the Circumcision (1845)	700	561	1	...	1 ^{cc}	1	...
2.	S. Jacques. Ch. of (1874)	188	97	1*	1	...
3.	Pt. Euragée	77	77	1	...
	Total	965	735	1	...	2	3	25

Reference No. on Map.	NAME OF MISSION.	Population.	Members of the Church of England.	No. of Clergy.	Licensed Lay Readers.	School Houses.	Consecrated Cemeteries.	Approximate extent of Mission in Sea Miles.
IV.—HERMITAGE BAY (1854) <i>d</i> S. P. G. 90								
1.	Conmaigre Bay - - -	164	160
2.	Pass Island. Chapel <i>e</i> - - -	215	212	...	1	1
3.	Grole - - - - -	117	117	1*
4.	Hermitage Cove. S. Saviour's Ch. (1854) - - - - -	244 ^a	234	1	1	1	1	...
5.	Furby's Cove - - - - -			1*	1	...
6.	Gaultois - - - - -	478 ^b	278	1*	1	...
7.	Despair Bay - - - - -	417 ^c	147
8.	Pushthrough. Church ready for Consecration - - - - -	159	158	...	1	1	1	...
9.	Bonne Bay. Chapel - - - - -	99	99	1	...
10.	Richard's Harbour N. Chapel - - - - -	173	173	...	1	1
11.	Rencontre and N. S. James' Ch. (1867) - - - - -	139	137	...	1	1	1	...
12.	New Harbour. Chapel - - - - -	125	124	...	1	1	1	...
13.	François. Chapel - - - - -	96	95	...	1	1	1	...
14.	Cape la Hunc and N. - - - - -	227	226	1	...
Total - - - - -		2653	2160 ^g	1	7	10	9	90
V.—BURGEO (1842). S. P. G. 30								
1.	Little River and N. - - - - -	89	89
2.	Fox Island and N. - - - - -	108	108
3.	White Bear Bay and Wolf Bay - - - - -	187	186
4.	Ramea Islands - - - - -	111	111	1*	1*	...
5.	Lower Burgeo and N. S. John the Evangelist Church (1845) 2nd - - - - -	704	688	1	1	1	1	...
6.	Upper Burgeo and N. S. James' Ch. (1845) - - - - -	137	135	7	1	...
Total - - - - -		1366	1347	1	1	3	3	30

f. The Nonconformists from here to Channel are chiefly Wesleyans.

- a.* This includes 47 Miemac Indians. The Settlers are Scotch Roman Catholics, and farm to a considerable extent. They are skilful weavers, and spin the cloth for their own use.
- f.* This is the Southernmost Settlement on that part of the shore of Newfoundland between Cape Ray and Cape St. John, upon which the French have equal rights with the inhabitants to the Cod Fishery. The French may only erect temporary buildings for purposes of the Fishery.
- e.* The Schools on this part of the coast are assisted by the Colonial Government through the Bishop.

b. Including 80 Roman Catholics at the Highlands.

c. A School Chapel is being built here.

d. School House being built.

e. Those not belonging to the Church of England in this Mission are chiefly Roman Catholics.

f. There is a lead mine of considerable value at Port au Port.

Reference No. on Map.	NAME OF MISSION. [N. after a Name shows that the Neighbourhood is included.]	Population.	Members of the Church of England.	No. of Clergy.	Licensed Lay Readers.	School Houses.	Consecrated Cemeteries.	Approximate extent of Mission in Sea Miles.
VI.—ROSE BLANCHE (1817). S. P. G. 30								
1.	Grand Bruit and N. - - -	181	115 ^f
2.	La Poêle and N. S. Thomas (1848)
3.	Seal Islands and N. - - -	346	121
4.	Harbour-le-Cour - - -	197	153	1
5.	Rose Blanche. S. Michael and All Angels (1875) - - -	453	414	1	...	1	1	...
6.	Baziel and N. - - -	52	52
Total - - -		1607	1047	1	...	2	1	30
VII.—CHANNEL (1851). S. P. G. 38								
1.—Burnt Islands and N. Church ready for Consecration - - -		327	323	...	1	1
2.	Iles aux Morts - - -	260	232	...	1	1*
3.	Channel and N. St. James' Ch. (1855)	701	486	1	...	1	1	...
4.	Cape Ray - - -	153	123	1*	1	...
Codroy Rivers and N. - - -		570 ^a	9
5.	Codroy Harbour (l) - - -	405	285	...	1	1*	1	...
Total - - -		2416	1458	1	3	5	3	38

MISSIONS UNATTACHED TO DEANERIES.^g

I.—ST. GEORGE'S BAY (1842). S. P. G. 45								
1.	Crabb's Brook. S. Michael and All Angels - - -	201 ^b	121	...	1	1	1	...
2.	Middle Barachois - - -	42	33	1	...
3.	Robinson's Brook (c) - - -	151	150	..	1	1	1	...
4.	Robinson's Head to Head of Flat Bay	184	13
5.	Sandy Point. S. Stephen (1845) -	344	184	1	...	d	1	...
6.	Head of S. George's Bay, including Main Gut with N. and S. Shores	741	139
7.	The Gravels, Port au Port Bay and N. (l)	338	16
Total - - -		2001	656	1	2	2	4	45

There are two Saw Mills in the Bay of Islands.

g. 567 R. C., 70 Wesleyans, 138 Presbyterians.

Upon the N. W. Coast of Newfoundland, and upon the Labrador large quantities of herring are caught in September and October, whilst in Bonne Bay and Bay of Islands the herring fishery is continued during November and December, and through the ice from January to April.

h. 139 R. C., 270 Wesleyans.

j. Ready for Consecration.

a. School House building

Nos. 9, 10, 11 and 12 are on the Labrador side of the Strait.

Reference No. on Map.	NAME OF MISSION. [N. after a Name shows that the Neighbourhood is included.]	Population.	Members of the Church of England.	No. of Clergy.	Licensed Lay Readers.	School Houses.	Consecrated Cemeteries.	Approximate extent of Mission in Sea Miles.	
II.—BAY OF ISLANDS AND BONNE BAY (1866).									
Bay of Islands.	1. Lark Harbour - - - - -	1316 ^g	533	1 [*]	
	2. The Beach - - - - -					1 [*]	
	3. Birchy Cove. S. Mary's Ch. (1871)					1	1	1	1
	4. Trout River - - - - -	26	26	1	...	
Bonne Bay.	5. Woody Point - - - - -	948 ^h	539	...	1	1	1 [*]	1	...
	6. Birchy Head - - - - -					1	1 [*]	1	...
	7. Norris' Point - - - - -					64	48
	8. Rocky Harbour and N. - - - - -	59	59	1	...	
	9. Cow Head and N. - - - - -	100	97	1	...	
	10. Daniel's Harbour, St. John's Island, and smaller Settlements - - - - -	172	95	1 ^j	...	
	Total - - - - -	2685	1397	2	3	6	8	155	
III.—STRAIT OF BELLE ISLE (1849). S. P. G.									
	1. Anchor Point and N. - - - - -	228	156	1 ^a	1	...	
	2. Flowers Cove and N. S. Barnabas Ch. (1871) - - - - -	412	186	...	1	...	1	...	
	3. Cape Norman and Cook's Harbour -	106	75	
	4. L'anse à Maria - - - - -	53	20	1	...	
	5. Quirpon - - - - -	125	74	2	...	
	6. Griquet - - - - -	180	64	1 ^b	
	7. St. Anthony and N. - - - - -	252	99	1	...	
	8. Ireland and N. - - - - -	200	92	1	...	
	9. L'anse Sablon - - - - -	130	60	1	...	
	10. Forteau. S. Peter's Ch. (1857) - - -	180	101	1	...	
	11. L'anse aux Morts - - - - -						1	...	
	12. Red Bay. S. Paul's Ch. (1869) - - -	344	100	1	1	...	
	Total - - - - -	2220	1027	...	1	3	11	170	

The residents of Sandwich Bay and Hamilton Inlet are engaged almost exclusively in salmon fishery, and during the winter in trapping and hunting.

Reference No. on
Map.

NAME OF MISSION.

[N. after a name shows that the
Neighbourhood is included.]

IV.—BATTLE HARBOUR (1850). S. P. G.

	Population.	Members of the Church of England	No. of Clergy	Licensed Lay Readers.	School Houses.	Consecrated Cemeteries.	Approximate extent of Mission in Sea Miles.
							95
1. Henley Harbour and Chateau	110	41	1*	1	...
2. Battle Harbour. S. James' Ch. (1857)	577	428	1	...	1	2	...
3. Spear Harbour			1	...
4. S. Francis' Harbour. S. John Baptist Ch. (1853)	146	108	1	...
5. Venison Island	49	86	1	...
6. Seal Islands Ch. (1865)	139	106	1	...
Total	1071	769	1	...	2	7	95

V.—SANDWICH BAY.

.. Indian Tickle to Cape Poreupine	253	218	1	...
2. Hamilton Inlet and Indian Harbour	138	241
Total	691	459	1	200

NAMES OF CLERGY IN THE DIOCESE OF NEWFOUNDLAND

NOVEMBER, 1877.

BISHOP *Vacant.*

DEANERY OF AVALON.

ST. JOHN'S.

THE CATHEDRAL. Rector, *vacant.*
 Rev. F. R. Murray,
 Incumbent.
 Rev. J. F. Phelps, Pre-
 centor and Head
 Master of Ch. of Eng.
 Academy.
 Rev. Wm. Pilot, Suc-
 centor and Govern-
 ment Inspector of
 Ch. of Eng. Schools.
 Rev. C. J. Machin,
 Assistant Curate.
 ST. THOMAS' CH. Rev. T. M. Wood,
 Rector, R.D.
 Rev. A. C. Wood, M.A.,
 Curate.
 ST. MARY'S CH. Rev. E. Botwood,
 Rector.

VICE-PRINCIPAL OF
 THE THEOLOGICAL }
 COLLEGE } Rev. A. Heygate, B.A.

POUGH COVE *Rev. R. M. Johnson.
 TORBAY Rev. A. Heygate, B.A.
 PORTUGAL COVE } *Rev. C. Ellingham.
 TOPSAIL & SOUTH }
 SHORE } *Rev. E. Colley.
 PETTY HARBOUR } *Rev. T. Netten.
 FERRYLAND } *Vacant.*

DEANERY OF CONCEPTION BAY.

BRIGGS *Rev. Roll. H. Taylor.
 PORT DE GRAVE *Rev. J. C. Harvey, R.D.
 BAY ROBERTS *Rev. Wm. C. Shears.
 UPPER ISLAND COVE *Rev. Alfred C. Warren.
 HARBOUR GRACE Rev. J. M. Noel.
 HARBOUR GRACE } *Rev. John Godden,
 (South side) }
 CARBONAR *Rev. W. J. Hoyles.
 BAY DE VEID *Rev. G. S. Chamberlain.

DEANERY OF TRINITY BAY.

HEART'S CONTENT Rev. G. Gardner.
 NEW HARBOUR *Rev. S. M. Wien.
 TRINITY, W. Rev. H. Dunfield.
 TRINITY, E. *Rev. Ben. Smith, R.D.
 CATALINA *Rev. W. Netten.

DEANERY OF BONAVISTA BAY.

BONAVISTA *Rev. A. E. Bay
 KING'S COVE *Rev. Wm. Kirk
 SALVAGE **Vacant.*
 GREENSPOND *Rev. John G. C.

DEANERY OF NOTRE DAME BAY.

FOGO *Rev. C. Meek.
 HERRING NECK *Rev. A. S. Win
 TWILLINGATE *Rev. Robt. Ter
 EXPLOITS *Rev. John Hev
 TILT COVE *Rev. W. R. Sn
 WHITE BAY

DEANERY OF PLACENTIA BAY.

HARBOUR BUFFET *Rev. J. Kingw
 BURIN *Rev. J. Lockw
 LAMALINE *Rev. J. Darrel

DEANERY OF FORTUNE BAY.

S. PIERRE Rev. A. C. Wa
 HARBOUR BRITON *Rev. W. K. Wh
 BELLEORAM Rev. J. Bishop
 HERMITAGE BAY. *Vacant.*
 BURGO *Rev. J. Cumi
 ROSE BLANCHE *Rev. F. Skinn
 CHANNEL *Rev. T. A. Go

MISSIONS UNATTACHED TO DEANERIES.

ST. GEORGE'S BAY *Rev. C. Jeffery
 BAY OF ISLANDS Rev. J. J. Cif
 Rev. T. P. M
 STRAIT OF BELLE }
 ISLE } *Vacant.*
 BATTLE HARBOUR *Rev. George I
 SANDWICH BAY *Vacant.*

*S. P. G. MISSIONARIES.

OF NEWFOUNDLAND.

7.

. *Vacant.*

ANERY OF BONAVISTA BAY.

A . . . *Rev. A. E. Bayly, R.D.
 OVE . . . *Rev. Wm. Kirby.
 . . . **Vacant.*
 OND . . . *Rev. John G. Cragg.

ANERY OF NOTRE DAME BAY.

. . . *Rev. C. Meek.
 NECK . . . *Rev. A. S. Winsor.
 ATE . . . *Rev. Robt. Temple.
 . . . *Rev. John Hewitt.
 E . . . *Rev. W. R. Smith.
 AY . . .

ANERY OF PLACENTIA BAY.

BUFFET *Rev. J. Kingwell.
 . . . *Rev. J. Lockward.
 E . . . *Rev. J. Darrell.

ANERY OF FORTUNE BAY.

E . . . Rev. A. C. Waghorn.
 BRITON *Rev. W. K. White, R.D.
 AM . . . Rev. J. Bishop.
 GE BAY. *Vacant.*
 . . . *Rev. J. Cunningham.
 ANCHE . *Rev. F. Skinner.
 . . . *Rev. T. A. Goode.

NS UNATTACHED TO DEANERIES.

GE'S BAY *Rev. C. Jeffery.
 SLANDS . Rev. J. J. Curling.
 . . . Rev. T. P. Massiah.
 F BELLE } *Vacant.*
 . . . }
 HARBOUR *Rev. George Bishop.
 U BAY . *Vacant.*

*S. P. G. MISSIONARIES.

LIST OF MISSIONS

OF THE

DALHOUSIE UNIVERSITY
LIBRARY

ENGLAND



SPECIAL
COLLECTIONS

NDLAND

A D O R.

7.

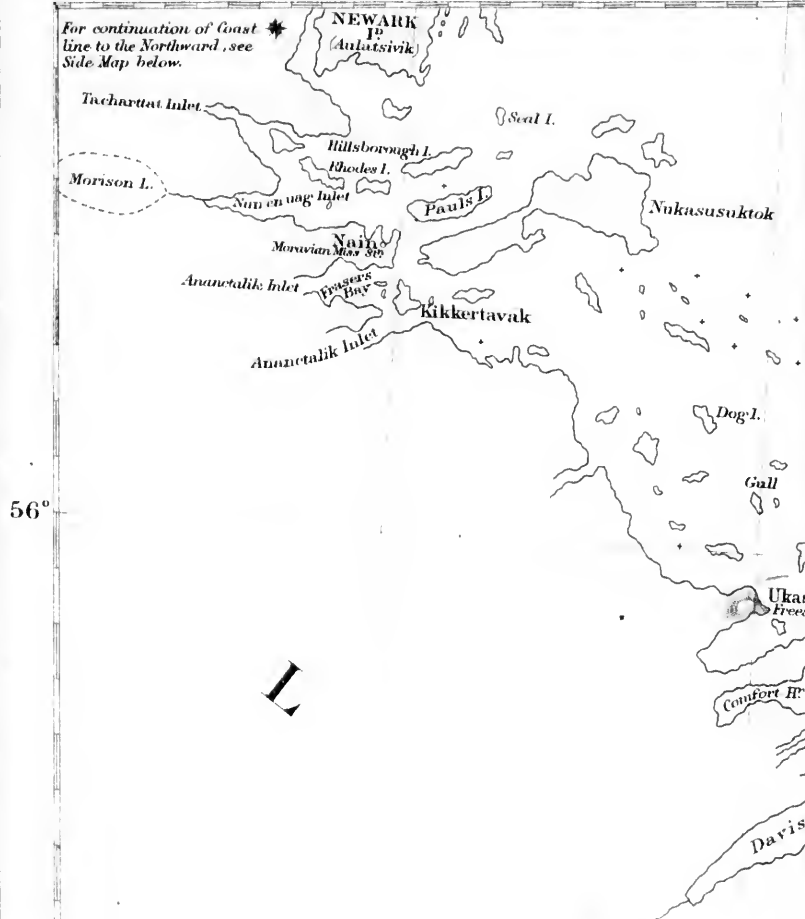
TWO WEEKS BOOK
TO BE RETURNED ON OR BEFORE

SP. COLL.			NON CIRC.	

62°

61

For continuation of Coast line to the Northward, see Side Map below.



56°

L

A

55°



C. Uvassuk, C. Oppenavik, Kokkeviak

S

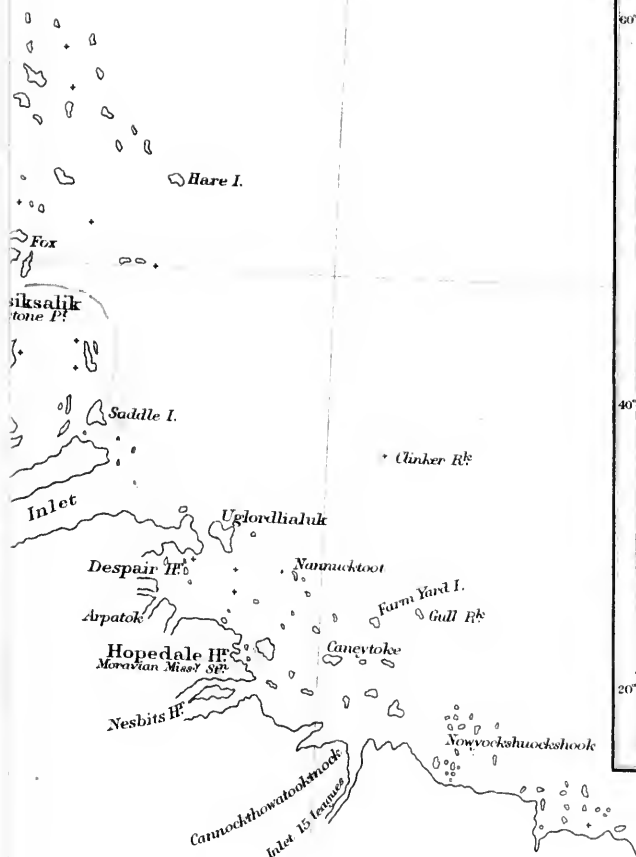
E

R

60



60°



B

R

Moog

59°



58°

57°

56°



Tinker Rk

m Yard I.
Gull Rk

Nowokshuockshook

Aluk B. Gullalewet

Moogounoic

Kyucktabuck

Cannotocktuat

Webeck II^e
Cape Harrison

Byron B.

Orkuseequock

Sloop I.

Indian II^e

Bulldog I.

MILTON INLET OR GROSSWATER BAY

56°

55°

54°

A DIOCESE
OF THE
CHURCH OF ENGLAND
IN
**NEWFOUN
AND
LABRA**

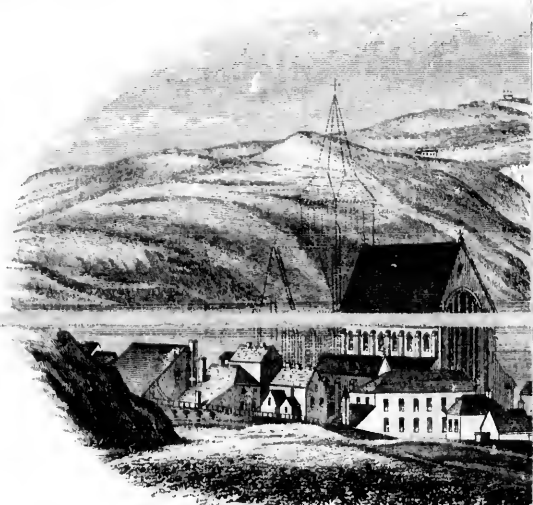
Showing the
DEANERIES AND

COMPILED CHIEFLY FROM ADMIRALTY SURVEYS & A GEOLOGICAL
WITH THE ASSISTANCE OF THE CLERGY
BY ONE OF THEIR NUMBERS

Scale of English Statute

10 5 0 10 20 30 40

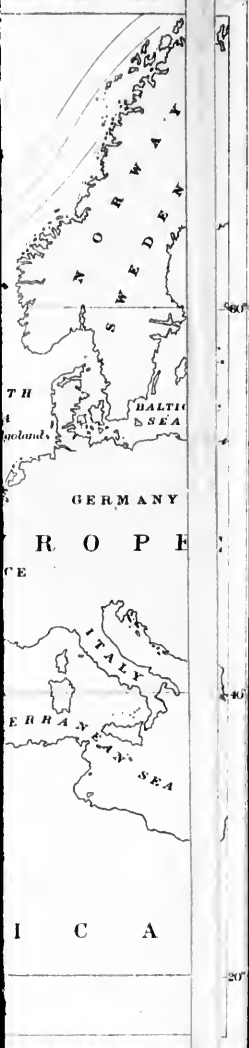
Roads in the Avalon Peninsula. Overland Telegraph Lines & Submarine Telegraph Lines. Heights of Mountains, Lakes &c. in English Feet above the Sea. Blow me down



Entrance to the Harbour of St. John's, Newfoundland.
The Cathedral Church of the Church of England

The Roman Catholic Cathedral lies to the left of the one shown, and it is a large building in the Italian style, and is considered

It is hoped to complete the Church of England Cathedral, and nearly £4000 have been subscribed towards that object (1877).



53°

52°

DIOCESAN MAP
 OF THE
 OF ENGLAND
 IN
 DUNDLAND
 AND
 RADOR

Showing the
 S AND MISSIONS

WAYS & A GEOLOGICAL SURVEY BY ALEX^r MURRAY, ESQ^r, F.G.S., C.M.G.,
 TANCE OF THE CLERGY OF THE DIOCESE,
 ONE OF THEIR NUMBER.

of English Statute Miles
 20 30 40 0 50 60 70

Telegraph Lines & Submarine Telegraphs of the Sea. Blow me down
 Telegraph Cables. Line of Railway Survey
 M^r Bay of Islands 2086 f^t being the highest point.



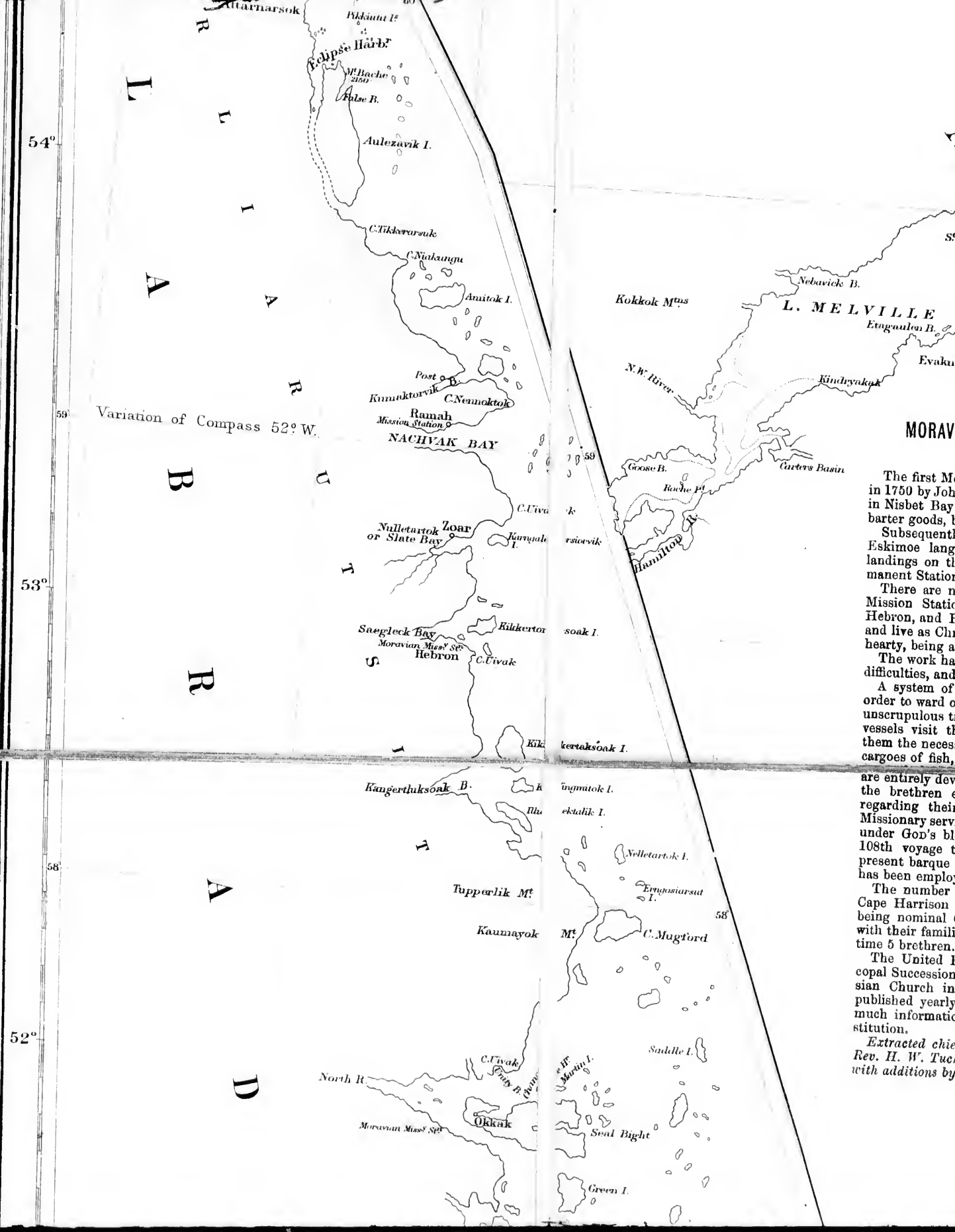
Harbour of St. Johns. New
 al Church of the Church
 nal lies to the left of the on
 Italian style, and is cons
 arch of England Cathedral
 towards that object (1877).



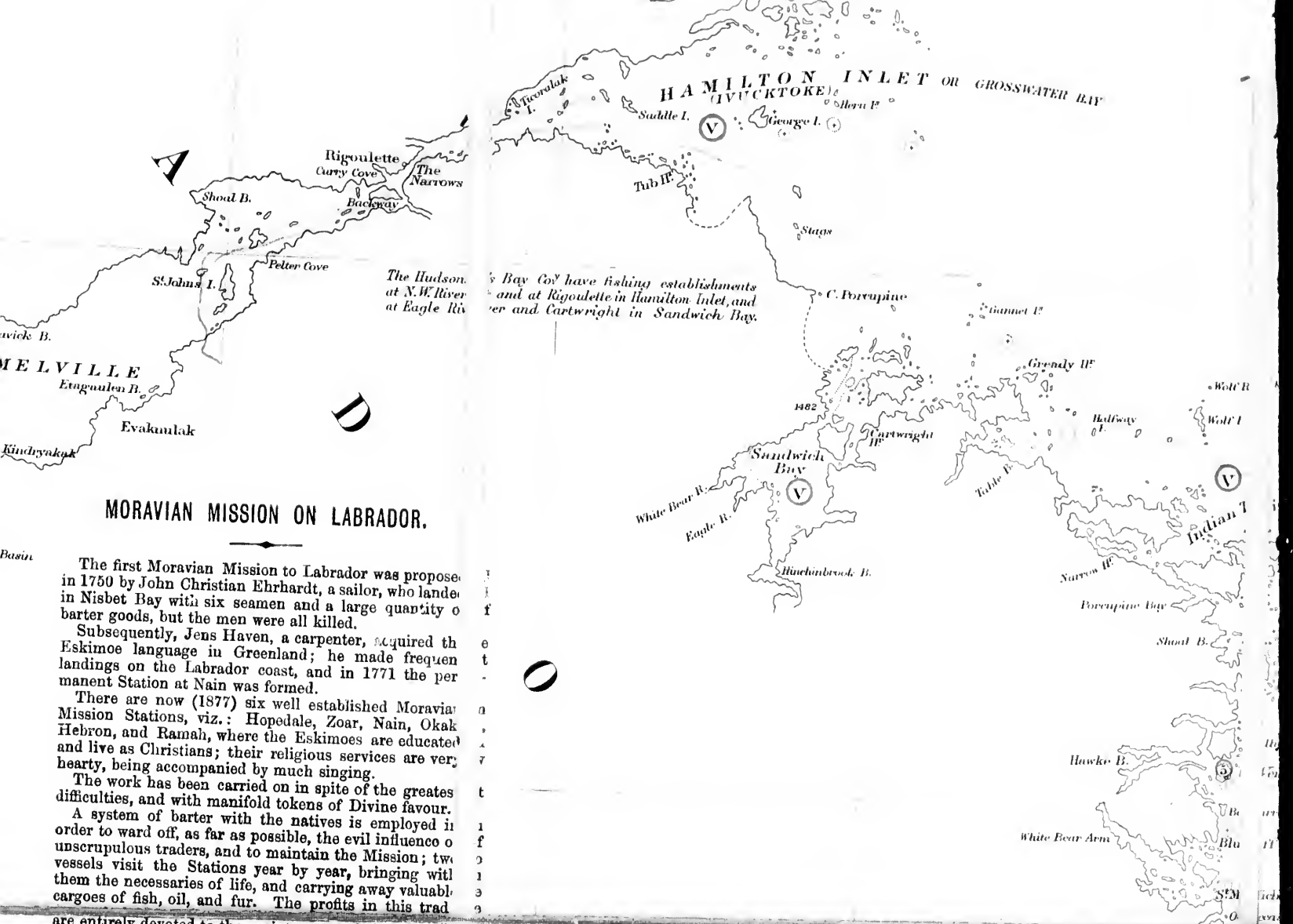
Dundland, Showing
 th of England
 and shown in this sketch
 rious from the Narrows.
 is a Memorial to Bishop Field
 but more than £25,000 will be required

56°

55°



The first Mo
 in 1750 by John
 in Nisbet Bay
 barter goods, b
 Subsequently
 Eskimoe langu
 landings on the
 manent Station
 There are no
 Mission Station
 Hebron, and Ra
 and live as Chri
 hearty, being ac
 The work has
 difficulties, and
 A system of
 order to ward of
 unscrupulous tr
 vessels visit th
 them the necess
 cargoes of fish,
 are entirely dev
 the brethren e
 regarding their
 Missionary serv
 under God's ble
 108th voyage to
 present barque
 has been employ
 The number o
 Cape Harrison i
 being nominal C
 with their familie
 time 5 brethren.
 The United B
 copal Succession
 sian Church in
 published yearly
 much information
 stitution.
 Extracted chief
 Rev. H. W. Tuck
 with additions by



MORAVIAN MISSION ON LABRADOR.

The first Moravian Mission to Labrador was proposed in 1750 by John Christian Ehrhardt, a sailor, who landed in Nisbet Bay with six seamen and a large quantity of barter goods, but the men were all killed.

Subsequently, Jens Haven, a carpenter, acquired the Eskimoe language in Greenland; he made frequent landings on the Labrador coast, and in 1771 the permanent Station at Nain was formed.

There are now (1877) six well established Moravian Mission Stations, viz.: Hopedale, Zoar, Nain, Okak, Hebron, and Ramah, where the Eskimoes are educated and live as Christians; their religious services are very hearty, being accompanied by much singing.

The work has been carried on in spite of the greatest difficulties, and with manifold tokens of Divine favour.

A system of barter with the natives is employed in order to ward off, as far as possible, the evil influence of unscrupulous traders, and to maintain the Mission; two vessels visit the Stations year by year, bringing with them the necessaries of life, and carrying away valuable cargoes of fish, oil, and fur. The profits in this trade

are entirely devoted to the maintenance of the Mission; the brethren employed in the stores at the Stations regarding their work in this department as indirect Missionary service. The Moravian Missionary Ship has, under God's blessing, been permitted to complete the 108th voyage to Labrador in successive years. The present barque "Harmony," is the eighth vessel which has been employed in this service.

The number of Eskimoes on the coast to the N. of Cape Harrison is estimated at 1,250, all but about 80 being nominal Christians; the Moravian Missionaries, with their families, number 42 persons; there are at this time 5 brethren.

The United Brethren, or Moravians, claim the Episcopal Succession through a small branch of the Waldensian Church in Austria. The Moravian Almanack, published yearly in London (32, Fetter Lane), contains much information about their history, work, and constitution.

Extracted chiefly from "Under His Banner," by the Rev. H. W. Tucker, M.A., Assistant Secretary S. P. G., with additions by the Secretary of the Moravian Mission.

The Brook at Blanc Sablon forms the boundary between the Dominion of Canada (including the Labrador) as well as between the Dioceses of Quebec and Newfoundland. A Missionary of the Diocese of Quebec has resided on the Labrador both in Summer and Winter for some years past and visited Newfoundland (Clergyman), making Mutton Bay his Head Quarters in Summer and Schwooner Bay in Winter. (1877)

is the Boundary between the Dominion of Canada (including the Labrador) as well as between the Dioceses of Quebec and Newfoundland. A Missionary of the Diocese of Quebec has resided on the Labrador both in Summer and Winter for some years past and visited Newfoundland (Clergyman), making Mutton Bay his Head Quarters in Summer and Schwooner Bay in Winter. (1877)

GENERA

The Island of Newfoundland was discovered by Cabot being distant therefrom 1700 miles; it is situated between —thus St. John's lies to the south of Paris. Its greatest length is about 130 miles, being nearly as large as Great Britain.

In 1623, Lord Baltimore established himself on the Avalon. About the same time the French made a Settlement there at variance, until, in 1713 at the peace of Utrecht, it was ceded to Great Britain, subject to certain fishery privileges conferred on the French.

Upon the N.W. and N.E. Coast, between Cape Ray and St. John's, the English in the Codfishery; this part of Newfoundland is ceded by treaty, to erect permanent buildings thereon. The number of houses and from St. Pierre, was, in 1874, estimated at 5621.

The population of Newfoundland and Labrador consists of about 100,000, with the chief merchants of the Colony, reside either in St. John's or in the interior.

The number of Lighthouses and Beacons is 25. The Revenue in 1876, £221,175. The Colonial Debt is about £1,700,000; the total value of exports varies, and is about £1,000,000, consisting of fish, seal and cod oil, sealskins, some fur, copper, and nickel.

The Government of the Colony is what is commonly called a nominated Legislative Council, and an Elective House of Assembly, established in 1833—the "Responsible" form was established in 1855.

The population is wholly of British origin.

A line of country for a Railway has been surveyed between St. John's and the Atlantic Telegraph passes through Heart's Content.

CL

The soil of the Island is light, and is better adapted to agriculture than the interior consists of barrens, ponds and marshes. The climate is more severe in winter than that of any part of the neighbouring continent which usually drifts along the Eastern and North Western Coast in April, chilling the air, but at the same time carrying on the snow.

During July and August fog is prevalent, especially in the interior, not penetrate far inland. It is caused by the warm moist air from the Gulf of Mexico condensed by the cold Polar current.

Icebergs are found upon the N.E. Coast till late in the month of August. The Mean Temperature, taking an average for 8 years, is 47° F.

Abstract of some Meteorological Observations, at St. John's

	Jan.	Feb.	March.	April.
Mean Height of Barometer	29.875	29.810	30.023	30.023
Mean Temperature F.	18.7	10.7	26.9	44.0
Absolute Max. Temp. in Shade ...	47.5	37.0	44.0	66.0
Absolute Min. ditto ...	-5.5	-12.0	-10.0	10.0
Depth of Snow in inches and tenths	28.96	22.90	17.12	0.00
Depth of Rain, Melted Snow, in inches and tenths.....	4.36	2.34	4.29	1.00

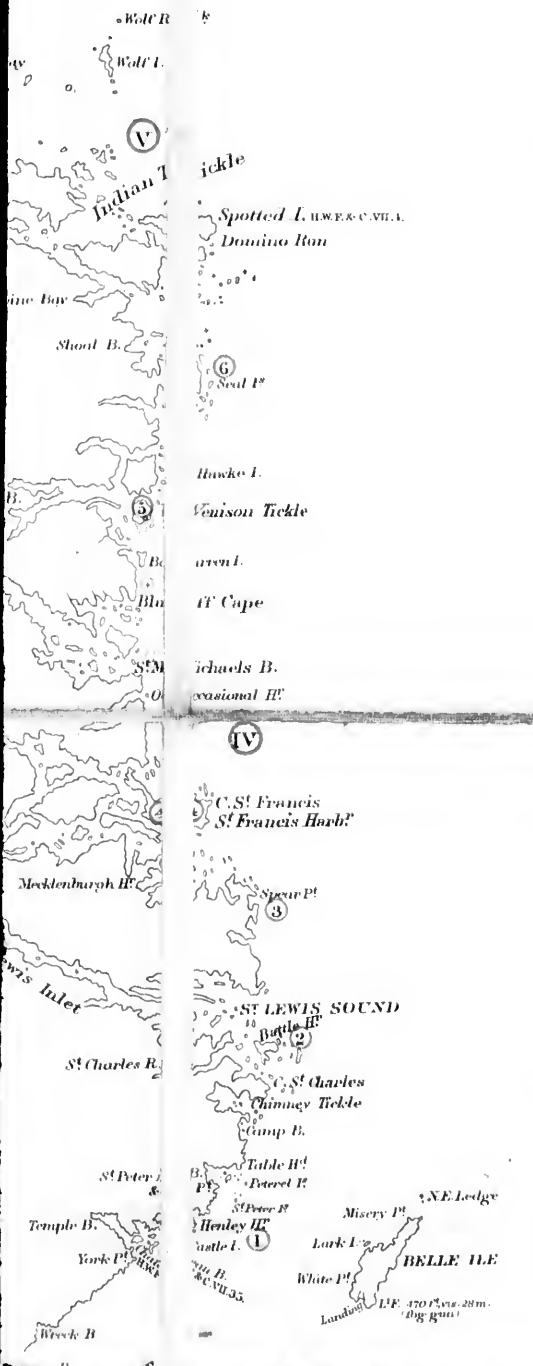
The average Temperature in the winter on the North Coast of Labrador, at Hopedale thermometer, is as the greatest heat (July 26, 1871),—104°, or 72° below zero (1873). The average temperature for the year is—5° F. There was not a fall of snow. The average temperature at Hopedale, is +47° F. By comparing the average temperature at some idea may be formed of the temperature at stations in the interior.

EDU

Education in Newfoundland was, for many years, chiefly in the hands of the Society had, in 1876, 18 schools with about 2650 pupils. Government; the Educational Grant for 1876 was \$80,000. Roman Catholic and Wesleyan Schools according to the Church of England with 5071 pupils under tuition.

In St. John's there are several Higher Class Academies.

ECCLE



GENERAL REMARKS.

discovered by Cal
it is situated betwe
Paris. Its greatest
length from N. to S. is nearly 300 miles, its average breadth
Its estimated area is 40,200 square miles.
South Eastern part of the Island, and called it the Province of
ement at Placentia, and for many years they and the English
the exclusive Sovereignty of Newfoundland was declared to be
ceded to the French, which are still in force.
nd Cape St. John, the French have concurrent rights with the
the "so called French Shore," but the French are not allowed,
mber of Frenchmen employed in their Fisheries on the Banks
imated at 5621.
and Labrador consi
y, reside either in
Beacons is 25.
lonial Debt is abo
ts varies, and is abo
ut £1,600,000, which exports consist of cod, salmon and other
kel ore.
termed "Responsible Government," composed of a Governor,
f Assembly. A Representative Government was first conferred
58.

ot in 1479, and is, of all her Colonies, the nearest to England,
n 46° 30' and 51° 39' N. Lat., and 52° 38' and 59° 25' W. Long.
Its estimated area is 40,200 square miles.
South Eastern part of the Island, and called it the Province of
ement at Placentia, and for many years they and the English
the exclusive Sovereignty of Newfoundland was declared to be
ceded to the French, which are still in force.
nd Cape St. John, the French have concurrent rights with the
the "so called French Shore," but the French are not allowed,
mber of Frenchmen employed in their Fisheries on the Banks
sts almost exclusively of fishermen. The Government Officers,
St. John's or Harbour Grace.
The Colonial Expenditure in 1876, £221,693; the Colonial
ut £250,000. The total value of imports varies, and is about
ut £1,600,000, which exports consist of cod, salmon and other
kel ore.
termed "Responsible Government," composed of a Governor,
f Assembly. A Representative Government was first conferred
58.
etween St. George's Bay and St. John's.
ent and St. Pierre.

54°

CLIMATE.

and is better adapted
marshes. The c
ighbouring continent
a and North Western
time carrying on i
revalent, especially
by the warm mois
Coast till late in A
n average for 8 year

for grazing than for agricultural purposes; large tracts of the
imate is very healthy, less warm in summer and less cold in
; its principal drawback arises from the presence of Arctic ice,
n Shores during the months of January, February, March and
its surface the wealth of seals.
upon the Southern Coasts and in Belle Isle Strait, but it does
winds, which blow across the Gulf Stream, meeting and being
August.
rs, was 42° 02 F.

53°

ical Observations, t

aken at St. John's, Newfoundland, for the year 1876.

	Feb.	March.	April.	May.	June.	July.	Aug.	Sept.	Oct.	Nov.	Dec.
75	29.810	30.023	29.962	29.962	30.187	30.266	30.039	29.910	29.873	29.954	29.567
7	19.7	26.9	35.3	42.1	58.7	61.5	63.7	49.7	43.4	35.5	27.2
5	37.0	44.0	53.0	71.5	83.0	80.0	92.5	71.0	68.5	61.0	44.0
5	-12.0	-10.0	20.0	23.0	36.0	38.0	39.0	37.0	25.0	22.5	14.0
6	22.90	17.12	5.5050	4.00	23.37
3	2.34	4.29	1.67	4.13	1.19	4.09	7.47	8.71	4.19	3.68	2.99

winter on the North
Hopedale thermom
-104°, or 72° below
the year is—5° F.
verage temperature
g the average temp
erature at stations i

thern Coasts may be taken at 10° to 20° below the above.
etrical observations during several years give +86° Fahrenheit
freezing point, Fahrenheit, as the greatest cold (February 2nd,
For four years the month of July was the only one in which
of Edinburgh, which lies in about the same degree of latitude
erature at St. John's with the average temperature of Hopedale,
intermediate to them.

EDUCATION.

for many years, chi
s with about 2650
t for 1876 was \$8
s according to the
nder tuition.
gher Class Academ

efly carried on by the Colonial and Continental Church Society.
scholars. It is now vigorously taken up by the Colonial
\$3,251. The Grant is divided between Church of England,
population. In 1876 there were 115 Board Schools of the
ies and Schools.

52°

ECCLESIASTICAL.

of Newfound

land and Labrador consisted of :-

By the Census of 1874, the population of Newfoundland and Labrador was as follows:

Church of England	59,561
Roman Catholics	64,317

land and Labrador
West
Other

CHURCH OF ENGLAND

In 1703 the Society for the Propagation of the Gospel in Foreign Parts was established, and from that time to the present the Colony has continued to be a mission field. The total amount expended in the work has been £290,000 sterling.

The growth of the Church of England, of late years, has been marvellous. The Bishop Feild, D.D., and the zealous Clergy who work under him, have done much for the people. The Bishop, Charles Feild, D.D., is the head of the Church, and is assisted by the Clergy. The amount collected for the support of the Church is about £11,000, and the amount of the Bishop's salary is about £7,000 in the year.

The Annual Grant of the S.P.G. is about £4,000. The Synod, was £3,000. The Bishopric Endowment Fund is about £11,000, and the Clergy Endowment Fund is about £7,000 in the year.

The Bermuda Islands formed part of the Diocese of Newfoundland, and were transferred to the Diocese of New York in 1841. The number of the Church members of the Church of England in the Islands, and twelve churches.

el in Foreign Parts
ally been the ob
rs, has been mar
d with him.
the Bishop, Cl
he amount collec
about £11,000, g
hands of the S.

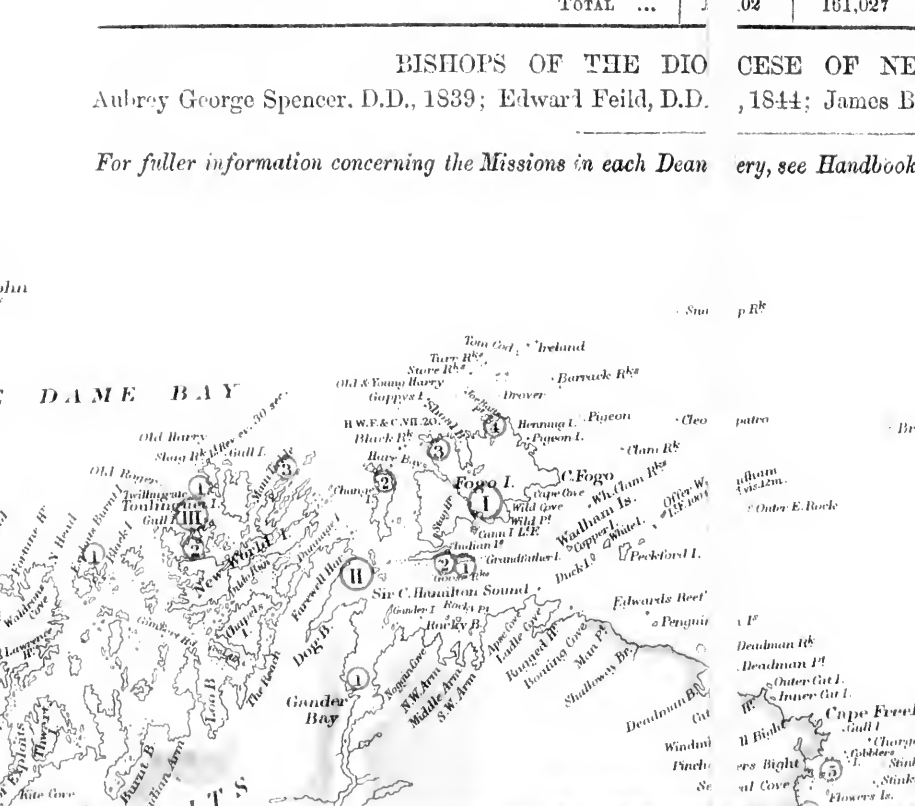
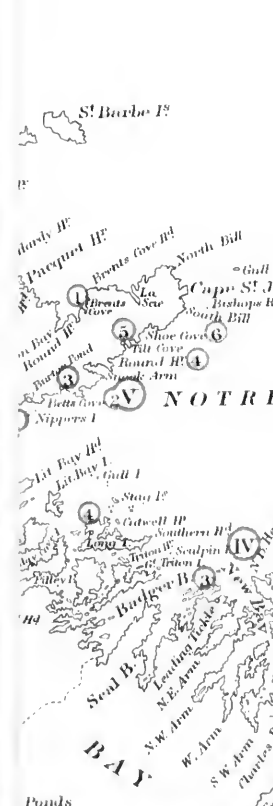
Newfoundland
from New York.
members of the Chu

Summary of Statistical Information concerning the Church of England in Newfoundland and Labrador

Colour on Map.	Name of Rural Deanery or other portion of the Diocese.	No. of Churches.	Population.
	Avalon	17	39,630
	Conception Bay	17	31,457
	Trinity Bay	14	12,973
	Bonavista Bay	10	14,033
	Notre Dame Bay	12	16,379
	Placentia Bay	9	10,140
	Fortune Bay	13	11,912
	Missions unattached to Deaneries	10	8,688
	Portions of Coast chiefly inhabited by Roman Catholics or Wesleyans not included in the above		15,815
	TOTAL	102	161,027

BISHOPS OF THE DIOCESE OF NEWFOUNDLAND AND LABRADOR: Aulrey George Spencer, D.D., 1839; Edward Feild, D.D., 1844; James B. ...

For fuller information concerning the Missions in each Deanery, see Handbook



ies and Schools.

STATISTICAL.

Iland and Labrador consisted of :—

Wesleyans	35,702
Other Denominations	1,794

OF ENGLAND.

el in Foreign Parts sent the first Missionary to Newfoundland, ally been the object of that Society's fostering care, more than

rs, has been mainly due to the unceasing labours of the late d with him. There is now a Diocesan Synod which meets the Bishop, Clergy, and Lay Delegates.

The amount collected, in 1875-6, in the Colony and paid in to the about £11,000, giving an income of £540 sterling. The Theo- hands of the S.P.G., who pay £300 sterling per annum to the

Newfoundland since 1840. They are from 700 to 800 miles from New York. They contain about 12,000 inhabitants, half of ubers of the Church of England. There are seven Clergymen

51°

the Church of England in Newfoundland and Labrador.

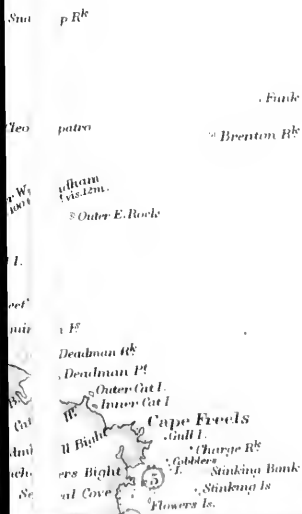
No. of Churches.	Population.	Members of the Church of England.	Clergy.	Licensed Layreaders.	Schools of the Ch. of England.	Consecrated Cemeteries.	Approximate extent in Sea Miles.
17	39,630	8,333	12	7	19	14	66
17	31,457	12,067	8	13	21	12	32
14	12,973	8,113	5	18	23	13	80
10	14,033	7,133	4	10	20	14	117
12	16,379	7,582	7	14	25	22	412
9	10,140	2,886	9	4	13	13	150
13	11,912	9,171	7	18	37	33	305
10	8,688	4,308	4	6	13	31	665
	15,815	101					
102	161,027	59,694	50	90	171	152	1827

CESE OF NEWFOUNDLAND.

, 1844; James B. Kelly, D.D., Coadjr. Bp. 1867-76, Bp. 1876-7

ery, see Handbook, with Tabular Statement, to accompany this Map.

50°



The Roman Numerals refer to the Missions

The Arabic in each Mission Settlements

G U L F

O F

S T L A W R E N C E

The Gulf of S^t Lawrence is usually filled with Drift Ice from Christmas to May. Navigation commences in the Southern Bays, and the Strait of Belle Isle is commonly free from ice on the Newfoundland side about the middle of June. Large icebergs cannot pass through the Straits.

* Bird Rocks Light proposed



MAGDALEN ISLANDS

S^t Paul I. L.F. via 20 miles
S^t Rev. (Fog Bell) via 20 miles

Telegraph Cable



CAPE BRETON ISLAND



ST GEORGE

TABLE OF DISTANCES

- S^t John's to C. S^t Francis
- C. S^t Francis to S. P^t Baccalieu
- S. P^t Baccalieu to C. Bonavista
- C. Bonavista to C. Freels
- C. Freels to C. Fogo
- C. Fogo to C. Bauld
- C. Bauld to Battle H^t
- Battle H^t to Domino Run
- Domino Run to Indian H^t
- Indian H^t to Hopedale
- Hopedale to Nain
- Nain to Okkak
- Okkak to Hebron
- Hebron to C. Chidley

Harbour Grace to S^t John's
Harbour Grace to S. P^t Baccalieu

48°

47°

61°

60°

59°

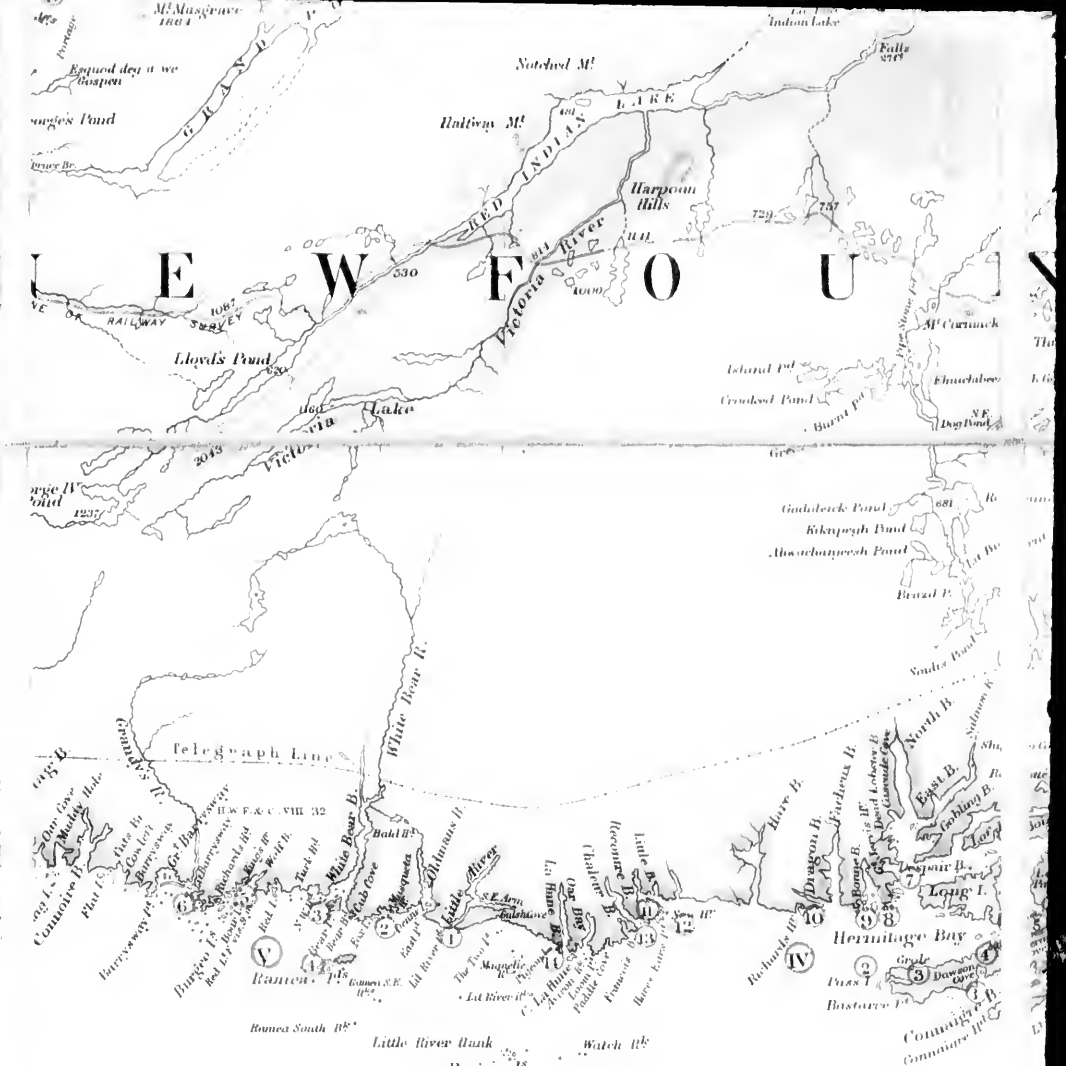


TABLE OF DISTANCES BY SEA. IN SEA MILES

Northward

S ^t . John's to C. S ^t . Francis	18	S ^t . John's to C. Bauld	273
C. S ^t . Francis to S. P ^t . Baccalieu	17	C. Bauld to P ^t . Amour	54
S. P ^t . Baccalieu to C. Bonavista	38	P ^t . Amour to P ^t . Rich	51
C. Bonavista to C. Freels	37	P ^t . Rich to Bonne Bay, S. H ^d	73
C. Freels to C. Fogo	32	Bonne Bay, S. H ^d to Bay of Islands, S. H ^d	34
C. Fogo to C. Bauld	131		
Total	273		493

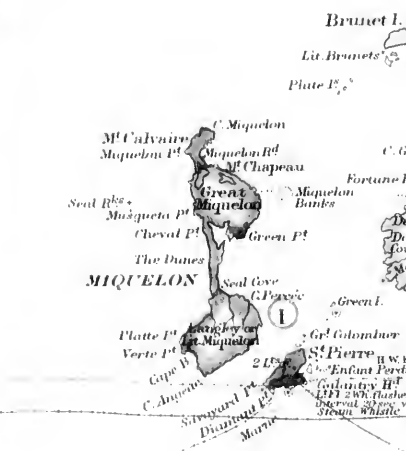
Southward

C. Bauld to Battle H ^d	38	S ^t . John's to C. Race	62
Battle H ^d to Domino Run	71	C. Race to off S ^t . Pierre	130
Domino Run to Indian H ^d	130	off S ^t . Pierre to C. Bay	141
Indian H ^d to Hopedale	104	C. Bay to C. S ^t . George	54
Hopedale to Nain	95	C. S ^t . George to S. H ^d B. of Islands	52
Nain to Okkak	90		410
Okkak to Hebron	73	S ^t . John's to C. Freels	142
Hebron to C. Chadley	143	C. Freels to Twillingate through the Run ^d	64
	1020		206
Harbour Grace to S ^t . John's	38	Twillingate to Belts Cove	43
Harbour Grace to S. P ^t . Baccalieu	30	Twillingate to Tilt Cove	37



Telegraph Cable to Cape Breton, Is
 Tele. Cable to United States

59° 58° 57° 56°



56°

55°



54° Long

itude West of Greenwich

53°

