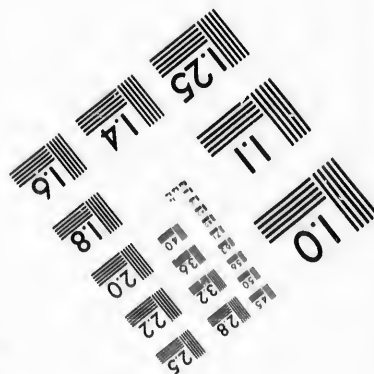
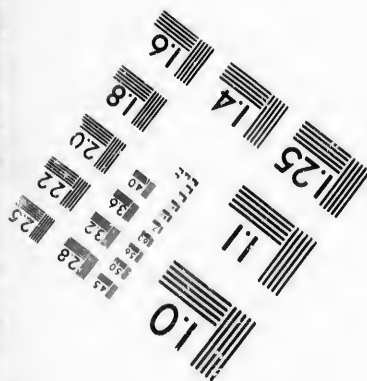
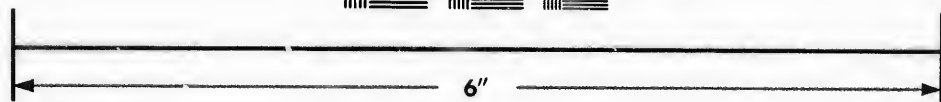
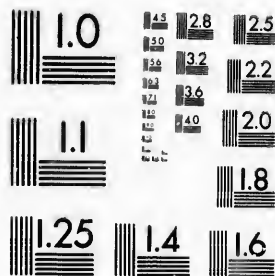
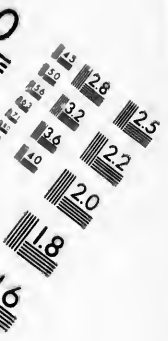


**IMAGE EVALUATION  
TEST TARGET (MT-3)**



**Photographic  
Sciences  
Corporation**

23 WEST MAIN STREET  
WEBSTER, N.Y. 14580  
(716) 872-4503



**CIHM/ICMH  
Microfiche  
Series.**

**CIHM/ICMH  
Collection de  
microfiches.**



Canadian Institute for Historical Microreproductions / Institut canadien de microreproductions historiques



**© 1987**

Technical and Bibliographic Notes/Notes techniques et bibliographiques

The Institute has attempted to obtain the best original copy available for filming. Features of this copy which may be bibliographically unique, which may alter any of the images in the reproduction, or which may significantly change the usual method of filming, are checked below.

L'Institut a microfilmé le meilleur exemplaire qu'il lui a été possible de se procurer. Les détails de cet exemplaire qui sont peut-être uniques du point de vue bibliographique, qui peuvent modifier une image reproduite, ou qui peuvent exiger une modification dans la méthode normale de filmage sont indiqués ci-dessous.

- Coloured covers/  
Couverture de couleur
- Covers damaged/  
Couverture endommagée
- Covers restored and/or laminated/  
Couverture restaurée et/ou pelliculée
- Cover title missing/  
Le titre de couverture manque
- Coloured maps/  
Cartes géographiques en couleur
- Coloured ink (i.e. other than blue or black)/  
Encre de couleur (i.e. autre que bleue ou noire)
- Coloured plates and/or illustrations/  
Planches et/ou illustrations en couleur
- Bound with other material/  
Relié avec d'autres documents
- Tight binding may cause shadows or distortion  
along interior margin/  
La reliure serrée peut causer de l'ombre ou de la  
distorsion le long de la marge intérieure
- Blank leaves added during restoration may  
appear within the text. Whenever possible, these  
have been omitted from filming/  
Il se peut que certaines pages blanches ajoutées  
lors d'une restauration apparaissent dans le texte,  
mais, lorsque cela était possible, ces pages n'ont  
pas été filmées.
- Additional comments:/  
Commentaires supplémentaires:

- Coloured pages/  
Pages de couleur
- Pages damaged/  
Pages endommagées
- Pages restored and/or laminated/  
Pages restaurées et/ou pelliculées
- Pages discoloured, stained or foxed/  
Pages décolorées, tachetées ou piquées
- Pages detached/  
Pages détachées
- Showthrough/  
Transparence
- Quality of print varies/  
Qualité inégale de l'impression
- Includes supplementary material/  
Comprend du matériel supplémentaire
- Only edition available/  
Seule édition disponible
- Pages wholly or partially obscured by errata  
slips, tissues, etc., have been refilmed to  
ensure the best possible image/  
Les pages totalement ou partiellement  
obscurcies par un feuillet d'errata, une pelure,  
etc., ont été filmées à nouveau de façon à  
obtenir la meilleure image possible.

This item is filmed at the reduction ratio checked below/  
Ce document est filmé au taux de réduction indiqué ci-dessous.

10X	12X	14X	16X	18X	20X	22X	24X	26X	28X	30X	32X
					✓						

The copy filmed here has been reproduced thanks to the generosity of:

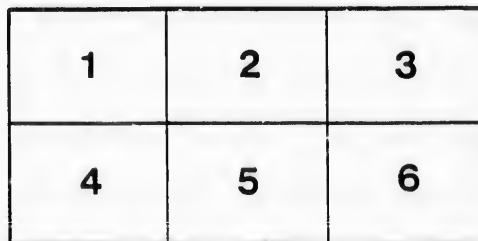
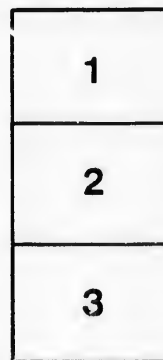
D. B. Weldon Library  
University of Western Ontario  
(Regional History Room)

The images appearing here are the best quality possible considering the condition and legibility of the original copy and in keeping with the filming contract specifications.

Original copies in printed paper covers are filmed beginning with the front cover and ending on the last page with a printed or illustrated impression, or the back cover when appropriate. All other original copies are filmed beginning on the first page with a printed or illustrated impression, and ending on the last page with a printed or illustrated impression.

The last recorded frame on each microfiche shall contain the symbol  $\rightarrow$  (meaning "CONTINUED"), or the symbol  $\nabla$  (meaning "END"), whichever applies.

Maps, plates, charts, etc., may be filmed at different reduction ratios. Those too large to be entirely included in one exposure are filmed beginning in the upper left hand corner, left to right and top to bottom, as many frames as required. The following diagrams illustrate the method:



L'exemplaire filmé fut reproduit grâce à la générosité de:

D. B. Weldon Library  
University of Western Ontario  
(Regional History Room)

Les images suivantes ont été reproduites avec le plus grand soin, compte tenu de la condition et de la netteté de l'exemplaire filmé, et en conformité avec les conditions du contrat de filmage.

Les exemplaires originaux dont la couverture en papier est imprimée sont filmés en commençant par le premier plat et en terminant soit par la dernière page qui comporte une empreinte d'impression ou d'illustration, soit par le second plat, selon le cas. Tous les autres exemplaires originaux sont filmés en commençant par la première page qui comporte une empreinte d'impression ou d'illustration et en terminant par la dernière page qui comporte une telle empreinte.

Un des symboles suivants apparaîtra sur la dernière image de chaque microfiche, selon le cas: le symbole  $\rightarrow$  signifie "A SUIVRE", le symbole  $\nabla$  signifie "FIN".

Les cartes, planches, tableaux, etc., peuvent être filmés à des taux de réduction différents. Lorsque le document est trop grand pour être reproduit en un seul cliché, il est filmé à partir de l'angle supérieur gauche, de gauche à droite, et de haut en bas, en prenant le nombre d'images nécessaire. Les diagrammes suivants illustrent la méthode.

ails  
du  
odifier  
une  
image

rrata  
o

pelure,  
n à



32X

# LIST OF VOTERS

— FOR THE —

## Township of Raleigh,

— APPEARING ON THE ASSESSMENT ROLL FOR THE YEAR —

# 1878.

PUBLISHED IN COMPLIANCE WITH "AN ACT  
RESPECTING VOTERS' LISTS," REVISED  
STATUTES OF ONTARIO, CHAP. 9.

CHATHAM:

PRINTED AT THE "BANNER" BOOK & JOB OFFICE, 153 KING STREET, WEST,

1878.

# LIST OF VOTERS

—FOR THE—

## *Township of Raleigh,*

—APPEARING ON THE ASSESSMENT ROLL FOR THE YEAR—

# 1878.

---

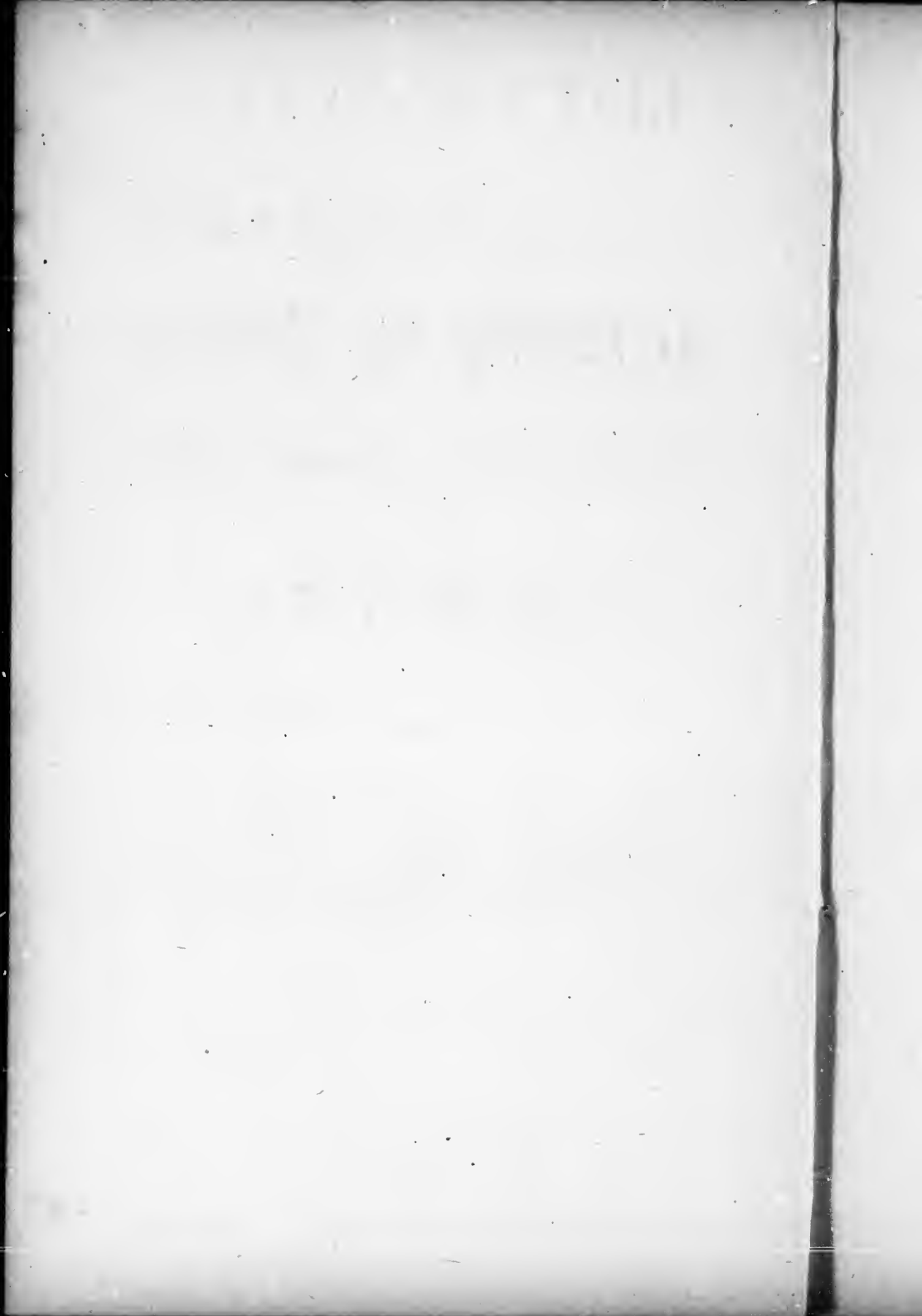
PUBLISHED IN COMPLIANCE WITH "AN ACT  
RESPECTING VOTERS' LISTS," REVISED  
STATUTES OF ONTARIO, CHAP. 9.

---

CHATHAM:

PRINTED AT THE "BANNER" BOOK & JOB OFFICE, 153 KING STREET, WEST,

1878.



# VOTERS' LIST, 1878, MUNICIPALITY OF RALEIGH.

## Polling Sub-Division No. 1,

Comprising all that portion of the Township of Raleigh lying between the River Thames and the line between Concessions A and 8; from the Town line between Raleigh and Tilbury East to the line between Lots 12 and 13.

### PART I.—Persons entitled to vote at both Municipal Elections and Elections to the Legislative Assembly.

No. on Roll.	NAME.	Lot.	Con. or Street.
133	Adams, Robert.....	E quar 4	5 T
186	Adams, Joseph.....	W hf N quar 2	6 F
12	Bruette, George.....	NE pt Sw hf 4	Front T
31	Brown, Thomas, Sr.....	SE pt NE hf 8	" F
36	Brown, John.....	NE hf Sw hf 9	" F. S.
37	Brown, Thomas, Jr.....	"	" F
99	Brown, William.....	Sw hf Sw hf 10	" F See Sub-d. No. 5
113	Blythe, James.....	SE hf 7	3 F
150	Bell, Nathan.....	N pt Nw hf 10	6 F
196	Brown, John.....	SE hf SE hf 6	6 T
203	Black, Horace.....	NE hf 8	6 F
215	Boley, George.....	SE hf 12	6 T
241	Barry, Patrick T.....	W cor se $\frac{1}{2}$ Nw $\frac{1}{2}$	1 7 T
244	Burton, William J.....	Nw hf 2	7 F
252	Bartlett, Frederick ..	Whf N quar 4	7 T
253	Bond, John N.....	SE hf 4	7 F
277	Bell, William.....	W quar 10	7 F
283	Bennett, Henry .....	Nw hf 12	7 F
327	Brown, Samuel.....	E pt E quar 10	A F
331	Bozwell, James.....	S quar 12	A F
332	Black, William.....	Pt E quar 12	A F
9	Crow, Charles.....	Nw pt 4	Front F
13	Crow, Daniel W.....	Sw pt 5	" F
30	Crackell, Thomas....	SE pt NE hf 8	" T
48	Crow, Thomas J.....	NE hf 11	" T
49	Crow, Thomas B.....	"	" F. S.
50	Crow, Alonzo.....	Sw hf 12	" T
52	Crow, John N.....	NE pt 12	" F
129	Coutar, John.....	Nw hf Nw hf 1	5 T
131	Casey, Thomas.....	2	5 F
189	Crommell, George E..	S quar 3	6 F
194	Cooper, Norman .....	Nw hf 6	6 T
262	Cooper, Allen.....	SE hf 7	7 F
263	Cooper, Americus....	SE hf 7	7 T



No. on Roll.	NAME.	Lot.	Con. or Street	No. on F
282	Charleston, George J.	SE hf 12	7 F	
313	Carley, John	N E pt 4	A T	192
315	Chinick, James	Sw pt 5	A F	242
317	Cuny, Samuel E.	N pt Sw hf 6	A F	245
325	Cosby, Lafayette	N pt w quar 10	A F	259
335	Collins, John H.	N quar 12	A F	260
				261
				322
6	Draggon, Anthony	..2 & 3	Front F	
51	Dobbin, James	Sw hf 12	" F	1
126½	Douglas, William	Sw hf 12	4 F	2
112	Drew, Thomas	SE half 7	3 T	29
207	Dyke, Elbert S.	W quar 8	6 F	118
212	Doston, William	SE hf 10	6 F	190
240	Duby, Alexander	SE hf 1	7 T	290
334	Dean, John	N pt w quar 12	A F	
251	Druce, Thomas	W quar 4	7 T	35
				43
255	Elliott, John	Nw hf 5	7 F	120
257	Emerson, William	SE ½ & Nw hf 6	7 F	122
39	Freeman, Samuel	Sw hf NE hf 9	Front F. S.	
38	Freeman, James	" "	" F	
184	Ferguson, Robert	SE pt S quar 1	6 F	123
185	Fellows, Abraham	W quar 2	6 F	191
417	Forhan, Patrick	SE pt Sw hf 6	A F	197
				201
				210
309	Griffin, Denis	Sw hf 1	A F	250
				266
16	Hock, Simon	Swptne pt nw } ½ 6, NE pt 5 }	Front F	310
44	Holmes, James N.	Sw hf 11	" F	319
45	Holmes, William	Ne ½ Se ½ of Sw ½ 10	" F	330
46	Holmes, James	" "	" F	399
141	Harris, William	S hf E quar 7	5 F	
143	Harris, John T.	E hf E quar 7	5 F	110
198	Harris, James T.	W quar 7	6 F	111
251	Hutchinson, John	W quar 4	7 F	
265	Hicks, Christopher	W pt Nw h <sup>c</sup> 8	7 F	114
281	Houston, John	S hf e quar 11	7 F	115
275	Harding, Robert	Cen pt E quar 10	7 F	
329	Highgate, Oliver	S pt S quar 10	A T	27
				28
				32
217	Irwin, William	N pt Nw hf 11	7 F	33
				34
5	Jubenville, Joseph	NE pt Sw hf 1	Front F	119
14	Johnson, Charles	N E pt Nw hf 6	" F	138
202	Jones, Solomon	Nw hf S E hf 7	6 F	139
206	Jackson, John	W quar 8	6 T	264
301	Jackson, John	E hf E quar 11	7 F	315
15	Knapp, Solomon	NE pt 5	Front F	4
124	King, Hooper	..11	4 F	8
137	Kearns, Patrick	Se hf nw hf nw hf 6	5 F	140
136	Kearns, Michael	Nw ½ nw ½ nw ½ 6	5 F	145

No. on Roll.	NAME.	Lot.	Con. or Street.
192	Kearns, Matthew....	E quar 5	6 F
242	Kalahar, Patrick....	Nw hf 1	7 F
245	King, Francis.....	SE hf 2	7 T
259	Kearns, Michael....	Nw hf 7	7 F
260	Kearns, John.....	Nw hf 7	7 F. S.
261	Kearns, Nicholas....	Nw hf 7	7 F. S.
322	Kersey, John W.....	Sw pt 9	A F
1	Labute, Julius.....	Ne pt Ne pt 1	Front F
2	Labute, Isadore.....	Sw pt 1	" T
29	Lively, Joseph.....	Se pt Ne hf 8	" F
118	Lewis, David.....	Sw pt 5	4 T
190	Longmore, Samuel....	N quar 3	6 F
290	Longmore, William...W	quar 4	6 F See sub-d. No. 2
35	Morrison, Robert J..	Sw pt Sw hf 9	Front F
43	Mersham, Nelson....	Ne hf W hf 10	" T
120	Myers, Adolph.....	Se hf 7	4 F
122	McKinnon, Albert...10		4 T
123	McDowell, Alexander.	11	4 T See sub-d. No. 6
191	Murphy, Daniel....	S quar 5	6 F
197	Moorhead, Robert..	Se hf Se hf 6	6 F
201	Martin, David.....	Se hf Se hf 7	6 T
210	Mitchel, James.....	Sw pt Nw hf 10	6 T
250	McFadden, Arthur...W	quar 3	7 F
266	Molester, Roger....	E quar 8	7 T
310	McCarte, John.....	Ne hf 2	A F
319	Moorehead, William..	Sw pt 7	A F
330	Mehan, Charles H....	S pt E quar 11	A F
399	McCarte, Thomas....	Sw pt 2	A F See sub-d. No. 3
110	Newcomb, Daniel W..	Se pt 6	3 T
111	Northwood, John....	Se pt 6	3 F
114	Orr, Johnston.....	Ne pt Se hf 8	3 F
115	Orr, John James....	S pt Sw hf 9	3 F. S.
27	Peck, Alex'r G. Jr..	Ne pt Sw hf 8	Front T
28	Peck, Alexander Sr..	Ne pt Sw hf 8	" F
32	Peck, Roderick N....	Nw pt Ne hf 8	" F
33	Peck, Roderick S. .	Nw pt Ne hf 8	" T
34	Peck, Arthur W ....	" "	" F. S.
119	Phipps, Charles.....	Ne hf 5	4 F
138	Poindexter, Job.....	S quar 7	5 F
139	Poindexter, Edward..	S quar 7	5 T
264	Peker, Richard.....	S quar 8	7 F See sub-d. No. 3
315	Parson, John.....	Ne hf 5	A F
4	Reaume, Richard....	Cen pt 1	Front F
8	Reaume, Charles....	Sw pt 4	front & 3 F
140	Reid, Charles.....	Nw hf 7	5 T
145	Ross, Robert C.....	9	5 F

No. on Roll.	NAME.	Lot.	Con. or Street.
187	Ross, John.....	N hf N quar 2	6 F
204	Rhue, William.....	S quar 8	6 F
205	Rhue, Hezekiah.....	S quar 8	6 F. S.
247	Rice, Thomas.....	E hf E quar 3	7 F
248	Rice, Patrick.....	S pt Se hf 3	7 F
247	Rice, Joseph.....	S pt Se hf 3	7 F.S
270	Rolls, James.....	N pt Ne hf 9	7 F
326	Robinson, Alexander.	N pt N quar 10	A F
21	Scott, William.....	Ne pt Sw hf 6	Front F
25	Steeper, Parish.....	Sw pt Sw hf 8	" T
26	Stockdale, William....	" "	" F
40	Slagg, Joseph.....	Ne half Ne hf 9	" F
41	Slagg, John.....	" "	" F.S.
42	Slagg, Henry.....	" "	" F.S.
116	Stinger, George.....	Se hf Se hf 1	4 F
117	Stinger, William....	Nw hf Se hf 1	4 F
130	Simour, Joseph.....	Nw hf Nw hf 1	5 F
134	Shreeve, Abraham....	Se hf S quar 5	5 F
144	Shreeve, George.....	8	5 F
182	Stewart, Frank B....	Pt 1	6 F
193	Shadd, Garrett S....	Nw hf 5	6 T
208	Soutar, John.....	Se hf 9	6 F
254	Shadd, Garrison....	Se hf 5	7 F
268	Scippio, Amariah....	N pt W quar 9	7 F
281	Sylvan, Charles S....	S hf E quar 11	7 T
308	Soutar, Thomas.....	Ne hf 1	A F
311	Shadd, Abraham D..	3	A F
313	Smith, James.....	Ne pt 4	A F See sub-d.no.3,4,5
320	Simpson, Henry L....	Ne pt 8	A F
321	Stockton, Henry....	Ne pt 9	A F
446	Steele, James E....	Ne pt Sw hf 11	A F See sub-d. no. 4.
447	Steele, Irwin.....	do	T
17	Thomas, Joseph....	Sw pt Ne hf 6	front F
18	Thomas, William....	" "	" F.S.
127	Tetrault, Joseph....	Se hf 1	5 F
128	Tetrault, Joseph....	Se hf Nw hf 1	5 F
132	Tetrault, Lewis.....	S quar 3	5 F
147	Timbers, Ambrose....	W hf w quar 10	5 F
195	Thomas, Robert.....	Nw hf Se hf 6	6 F
209	Tann, Cordy.....	S pt Nw hf 10	6 F
222	Thackery, William....	Nw hf 12	6 F See sub-d. no. 2.
316	Thompson, Edward..	Ne hf 6	A F
324	Travis, John R.....	W cor 10	A F
22	Williams, Robert....	7	front F
23	Williams, Albert....	7	" F.S.
24	Williams, Robert....	7	" F.S.
53	Williams, Charles....	Se pt 12	" T
109	West, William.....	Se pt 5	3 T
135	Wilson, William.....	Nw hf Se hf 6	5 F
216	West, Henry Jr.....	Se hf 12	6 F
249	Wood, Samuel.....	N quar 3	7 F
256	Walker, Peter....	Se hf 6	7 T
258	Wilcox, Valentine....	Nw hf 6	7 T

No. on  
267  
269  
278  
280  
445  
272  
279  
  
Par  
328  
142  
318  
274  
10  
148  
314  
323  
11  
243  
333  
  
Par  
  
Com  
betw  
the S  
wich  
and  
Chat  
  
Par  
pa  
No. o  
299  
300  
496  
76  
77  
78  
79  
99  
106  
158  
161  
292  
298  
302  
260

No. on Roll.	NAME.	Lot.	Con. or Street
267	Webb, Jefferson.....	Sw pt 9	7 F
269	Webb, John.....	E pt E quar 9	7 F
278	West, Henry.....	N quar 10	7 F
280	Washington, James..	S quar 11	7 F
445	Wilson, Hugh.....	E pt E quar 10	7 F See sub-d. no. 4.
272	Zebbs, Samuel H....	E pt S quar 10	7 T
279	Zebbs, Solomon ....	Whf w quar 11	7 T

**Part II.—Persons entitled to vote at Municipal Elections only.**

328	Beckwith, William..	So cen pt 10	A F
142	Harris, Reuben.....	E cor S $\frac{1}{2}$ of e $\frac{1}{4}$	7 5 F
318	Harris, James T....	S cor 7	A F
274	Jacobs, Mordecai ...	S pt E quar 10	7 T
10	Labadie, Damaseus..	Nw pt 4	front T
148	Lynch, Ira.....	Weor of n hf w $\frac{1}{4}$	10 5 F
314	Parsons, Henry.....	N pt Ne hf 5	A H
323	Prince, Hezekiah....	S cor Nw hf 10	A F
11	St. Peter, Charles...	Nw pt 4	front F
243	Sansberry, Robert...	Nw pt w quar 1	7 T
333	Smith, William.....	W cor 12	A H

**Part III.—Persons entitled to vote at Elections to the Legislative Assembly only.—None.**

**Polling Sub-Division No. 2,**

Comprising all that portion of the said Township of Raleigh lying between said River Thames and the centre of the 8th Concession from the Side Road between Lots 12 and 13, to the Townline between Harwich and Raleigh, save and except the North-west halves of Lots 13 and 14, in the 8th Concession, and that portion within the Town of Chatham.

**Part I.—List of persons entitled to vote at both Municipal Elections and Elections to the Legislative Assembly.**

No. on Roll.	NAME.	Lot.	Con. or Street.
299	Askins, Abraham....	Cen. strip se $\frac{1}{2}$	19 7 F
300	Askins, William E....	" "	" 7 F S
496	Aidis, Alfred.....	N quarter	22 8 F
76	Backus, Thomas... }	NE part 16	Front F
77	Backus, Lorenzo... }	NE part 16	" F S
78	Backus, Milton... }	NE part 16	" F S
79	Bellamy, William H..	S corner 15	" F
99	Brown, William.....	Ne pt Nw $\frac{3}{4}$	19 " F See sub-div. No.1
106	Barr, Alexander....	22	" F
158	Blackburn, Andrew..	E quarter 15	5 T
161	Bullis, Joseph.....	16	5 F
292	Bennett, Farmer....	Sw half 17	7 F See sub-div.No.4
298	Bell, Mitchell.....	Nw part 19	7 T
302	Butternick, George..	E corner 19	7 F
260	Berry, William.....	Sw pt Nw $\frac{1}{2}$	23 EBL 2 F

No. on Roll.	NAME.	Lot.	Con. or Street.
381	Brown, Richard.....	E quarter 21	EBL 4 F
382	Brown, Stephen.....	S quarter 22	do 4 F
390	Ball, Richard.....	Se part 24	do 4 F
464	Bail, John.....	Nw half 15	8 T See sub-div. No.5
497	Brown, George H....	W quarter 22	8 F
502	Brown, Thomas.....	Nw half 16	8 F
507	Brown, James.....	Nw half 25	8 F
62	Cook, George.....	Ne part 14	Front F
56	Conelly, William....	Sw part 14	" T
157	Clement, William....	W quarter 15	5 F
160	Cooper, William....	S quarter 15	5 T
177	Chrysler, John.....	W pt W qr 19	5 F
180	Crump, Henry.....	S corner 19	5 T
234	Chinnick, James....	Sw half 19	6 F See sub-div. No.1
287	Craige, Henson.....	Se hf E quar	137 T
366	Carlyle, Pernal.....	S corner 19	7 F
349	Chase, Samuel....		
350	Chase, Perry S....	W pt 20, E B L	2 F
374	Crowhar, John.....	Se half 23	EBL 3 T
336	Cameron, John.....	Ne part 19	A F
340	Chase, William H....	E corner 14	A T
468	Clarkson, John.....	N quarter 17	8 F
471	Cain, John.....	W half N qr 18	8 F
473	Coates, Nicholas....	E part N qr 18	8 F
501	Clarke, Charles.....	Nw half 23	8 F See sub-div. No.5
57	Dolsen, William W...	Sw pt Ne hf 13	Front F
58	Dolsen, William... }	Ne pt Ne hf 13	" F
59	Dolsen, Orville I... }	" " " 13	" F S
54	Dolsen, Gilbert H. }	Sw part 14	" F
55	Dolsen, Richard C. }	" " 14	" F S
103	Dolsen, Alexander }	21 Front	F
104	Dolsen, Francis J. }	21 Front	F S
105	Dolsen, Richard P. }	21 Front	F S
155	Dowling, John.....	Nw half 14	5 F
165	Dolsen, Oscar.....	Sw half 18	5 F
166	Dolsen, Herbert... }	Sw half 18	5 F S
179	Dolsen, Alexander J. }	S quarter 19	5 F
366	Dogherty John }	Nqr&nw pt eqr 20	EBL 3 F
367	Dogherty Francis }	" " " "	3 T
368	Drury, John.....	W qr 22	EBL 3 F
370	Drury, Henry.....	N qr 21	" 3 F
486	Dillon, Miles.....	W quarter 20	8 T
1158	Drury, William.....	46 Norw'ds sub-divs.	F
164	Elgar, John.....	Se half 17	5 F
383	Edwards, John & }	N e hf 22	EBL 4 F
384	Edwards, Charles }	do do	F S
171	Fox, Robert.....	E pt n qr 18	5 T
227	Fleming, James....	S cor 17	6 T
358	Forhan, Michael....	N e pt e qr 22	EBL 3 F
359	Frederick, Jacob....	Nw hf 22	EBL 2 F
363	Fairbanks, Thomas..	Se 1/4 & s e pt nwhf	23 F
378	Ferguson, Peter and }	S qr 20	EBL 4 F
379	Ferguson, James }	do do	F S

Street.

sub-div. No.5

sub-div. No.1

sub-div. No.5

No. on Roll	NAME.	Lot.	Con. or Street.
1163	Francis, Lewis . . . . .	141 142 N'ds sub-div	F
168	Granboise, Thos. & }	E pt ne hf 18	5 T
169	Granboise, William }	do	5 T
286	Graham, John . . . . .	E hf e qr 13	7 F
293	Grice, William & }	N qr 17	7 F
294	Grice, David W. . . }	do	7 F S
355	Goodyear, John . . . . .	S qr 22	EBL 2 F
489	Gill, George . . . . .	N hf n qr 20	8 F
1159	Glasser, Andrew . . . . .	36 Northw'ds subd	T
61	Holmes, Calaghan O. . . . .	Sw pt ne hf 14	Front F
71	Holmes, Wm. W. & }	Sw pt ne $\frac{1}{2}$ 15	" F
72	Holmes, Wm. J. B. }	do	" F S
73	Holmes, Ninian & }	N e pt 15	" F
74	Holmes, Alexander }	do	" F S
228	Hutchinson, John }	Sw pt & pt n $\frac{1}{4}$ 17	6 T See sub-div. No.1
229	Hutchinson, James }	do	6 T
233	Hall, John . . . . .	Nw hf 18	6 F
291	Huthnance, Chas. W. . . . .	15	7 F
295	Huthnance, Francis G . . . . .	Sw hf 18	7 F
353	Hull, William A . . . . .	Nw $\frac{1}{2}$ & nw $\frac{1}{2}$ sec $\frac{1}{2}$ 21	EBL 2 T
365	Howard, Lawrence . . . . .	w qr 20	3 F
373	Horn, George . . . . .	N qr 23	3 T
389	Howard, William . . . . .	S qr 21	4 F
486	Houston, John . . . . .	W qr 20	8 F see sub-divs 1 & 3
218	Irwin, William . . . . .	Se hf 13	6 F see sub-div No. 1
276	Irwin, Thomas and }	Ne hf 18	7 F
297	Irwin, John . . . . . }	do	7 F S
67	Johnson, Thomas }	Sw hf 15	Front F
68	Johnson, Alex. & }	do	" F S
69	Johnson, George . . }	do	" F S
94	Jones, Darius W . . . . .	W cor 19	" T
89	Johnson, William . . . . .	Nw pt ne hf 18	" T
95	Johnson, William . . . . .	W cor 19	" T
125	Johnson, John A . . . . .	Se pt 13	4 T
126	Johnson, Robt. W. }	do	4 T
301	Jackson, John . . . . .	N cen strip 19	7 T see sub-div. No.1
284	Jean, Robert . . . . .	W qr 13	7 T
345	Jordan, Richard & }	Ne pt 18	A F
346	Jordan, George . . . . . }	do	T
1166	Jones, Nathaniel . . . . .	125 126 127 N'd subd	F
175	Keat, James . . . . .	N cor 19	5 T
347	Keil, Charles . . . . .	Sw pt 19	A F
353	Knapp, Solomon . . . . .	Nw $\frac{1}{2}$ & nw $\frac{1}{2}$ sec $\frac{1}{2}$ 21	EBL 2 F see sub-div No. 1
356	Keiver, Nicholas & }	Sw pt e $\frac{1}{2}$ 22	" F
357	Kerver, John . . . . . }	do	" F S
156	Lecouq, Lucas . . . . .	W quar 15	5 T
162	Lague, David . . . . .	N cor Nw hf 18	5 T
225	Lee, William . . . . .	N quar 16	6 F
234	Lee, Thomas & . . . . . }	Se hf 18	6 F
232	Lee, John . . . . . }	"	6 F

o. on Roll.	NAME.	Lot.	Con. or Street
289	Longmore, John I. . . . .	Sw pt 14	7 F
290	Longmore, William. . . . .	Ne hf 14	7 F See sub-d. no. 1.
343	Lowrie, William. . . . .	16	A F
371	Lenover, Charles. . . . .	S quar 21	EBL 3 T
391	Lane, William. . . . .	Se hf Nw hf 24	" 4 F
56	McLean, James. . . . .	Ne pt Sw hf 13	front F
75	McCrea, George. . . . .	Nw pt Sw hf 16	" F
108	McKellar, P. D. . . . .	Ne cor 17	" F
82	McKellar, Thomas. . . . .	Sw hf 17	" F
83	McKellar, Donald. . . . .	Ne hf 17	" T
84	McKellar, Archib'd . . . . .	"	" F
97	Marsales, Peter. . . . .	Nw pt Nw $\frac{3}{4}$ 19	" T
154	Moore, Francis. . . . .	Nw hf Se hf 14	5 F
223	Morrison, George H. . . . .	E quar 16	6 T
230	Montgomery, Thomas E. . . . .	$\frac{1}{4}$ & Se pt n $\frac{1}{4}$ 17	6 F-
298	Mahaly, Henry. . . . .	S qr 13	7 F
304	Mason, William & . . . . .	S cen strip 19	7 T
305	Mason, Thomas. . . . .	"	T
338	McCombie, John Sr . . . . .	Ne pt 13	A F
339	McCombie, John Jr . . . . .	"	A F. S.
352	McGuire, John. . . . .	E cor 21	EBL 2 F
354	Moore, Mark. . . . .	S quar 23	" 2 T
385	McPherson, Donald & . . . . .	W quar 23	" 4 F
386	McPherson, Charles. . . . .	"	" 4 F. S.
387	Morden, David C. . . . .	S quar 23	" 4 T
388	Moore, Benjamin. . . . .	N quar 23	" 4 F
465	Mouut, Peter. . . . .	Nw hf 15	8 F
479	Moody, William. . . . .	W quar 19	8 F See sub-d. no. 5
1157	Murry, William. . . . .	46 Northwood's sub-d.	T
1165	Moase, Robert. . . . .	135, 136	" T
80	Newkirk, Ninian. . . . .	Se pt 16	front F
81	Newkirk, Peter J. . . . .	N quar 15	5 T
337	O'Rourke, John. . . . .	Sw pt 13	A F
348	O'Rourke, Martin . . . . .	Cen pt 13	A F
102	Perrington, Henry. . . . .	N cor 21	front H
372	Payne, Robert. . . . .	W quar 23	EBL 3 F
1157	Potter, Maurice. . . . .	Northwood's sub d., 1 2 & 6 Blk --, Kendall St.	F
100	Renwick, John. . . . .	Sw hf 20	front T
163	Richards, Jenkin. . . . .	Se hf 17	5 T
173	Roe, William. . . . .	Ne pt 19	5 F
174	Roe, Coleman. . . . .	Sw pt Ne hf 19	5 F
237	Reddick, Lester. . . . .	Ne hf 19	6 F
238	Reddick, George W & . . . . .	"	6 F. S.
239	Reddick, Wallin W. . . . .	"	6 F. S.
342	Rhodes, James. . . . .	15	A F
362	Robson, Charles. . . . .	Se & S pt nw hf 23	EBL 2 T

No. on Roll.	NAME.	Lot.	Con. or Street.
91	Spoar, Adolphus.....	E cor 18	front F
95	Stringer, George.....	W cor 19	" F
98	Smith, David.....	Sw pt nw $\frac{3}{4}$ 19	" F
101	Smith, John.....	Sw hf 20	" F
219	Sewell, George.....	W quar 15	6 F
151	Sewell, William.....	Nw hf 13	5 T
220	Soutar, William.....	Se $\frac{3}{4}$ 15	6 F
221	Soutar, James.....	E hf E quar 15	6 F
235	Soutar, Francis.....	W quar 13	7 F
307	Sergeant, Robert....	E cor S quar 19	7 F
364	Schwemler, Joseph...	Se pt 24 EBL	3 F
487	Stover, Edward.....	W cor n quar 20	8 F
488	Stover, James.....	W pt N quar 20	8 F
490	Sparks, George.....	W quar 21	8 T
152	Thackery, John.....	Se hf 13	5 T
222	Thackery, William....	W quar 16	6 F See sub-d. no. 1.
369	Thackery, William W..	W quar 21 EBL	3 F
176	Verrall, William.....	N cor 19	5 F
85	Willecox, Hezekiah & }	Sw hf 18	front F
86	Willecox, James..... }	" "	" F. S.
90	Willecox, Joseph ....	Nw pt Ne hf 18	" F
151	Weir, Malcolm.....	Nw hf 13	5 F
153	West, Henry.....	Se hf Se hf 14	5 F
159	West, John.....	E quar 15	5 F
167	Willecox, Hezekiah A. .	Sw pt Ne hf 18	5 F
171	West, Henry.....	E pt N quar 18	5 F
375	Wood, John.....	Nw hf 24 EBL	3 T
376	Wood, James.....	Nw $\frac{3}{4}$ Se hf 24	" 3 T
377	Whitesell, Joseph....	E quar 20	" 4 F
469	Wilson, James &... }	W quar 18	8 F
470	Wilson, Thomas... }	" "	8 F. S.
1156	Wanless, George 68 & 69	Northwood's sub-d.	F
1160	Washington, Isaac. .36	" "	" F

**Part II.—Persons entitled to vote at Municipal Elections only.**

472	Bartlet, Samuel.....	N cor 18	8 F
87	Cedar, David .....	Ne pt 18	front Oc.
361	Dolsen, James.....	Sw pt nw $\frac{1}{2}$ 23	EBL 2 H
218	Farnsworth, Alfred..	Nw hf 14	6 H
181	Thompson, James ..	E cor 19	5 T
351	Timbers, Thomas....	W quar 20 EBL	2 T
389	Griggs, George.....	N cor 24	" 4 H
1161	Vickery, Allen..	145 & 146 Northwood's	sub-d. F

**Part III.—Persons entitled to vote at Elections to the Legislative Assembly only.—None.**

b-d. no. 1.

d. no. 5



## Polling Sub-Division No. 3,

Comprising all that portion of the said Township of Raleigh, from the boundary of said Township to the line between lots 8 and 8, from the line between Concessions A and 8 to the line between Concessions 14 and the Talbot Road Lots.

**PART I.—Persons entitled to vote at both Municipal Elections and Elections to the Legislative Assembly.**

No. on Roll.	NAME.	Lot.	Con. or Street.
424	Allen, James.....	Sw pt E $\frac{1}{4}$ 7	8 T
409	Brooks, William ....	Ne $\frac{1}{2}$ n $\frac{1}{4}$ 4	8 F
412	Brenan, John .....	Nw hf 3	9 T
418	Burwell, Lewis.....	Se hf 6	8 T
508	Barry, William sr., }	Se hf 1	9 F
509	Barry, William jr., }	do	9 F S
517	Brady, Thomas.....	Nw hf 4	9 F see sub-div No. 4
519	Bennett, John .....	E qr 5	9 T
716	Burgee, Joseph.....	N qr 6	11 F
721	Best, Alexander .. }	E qr 7	11 F
722	Best, Edward .... }	do	11 H
773	Ballagh, Wm. G.....	W cor 1	12 F
784	Brown, Thomas & }	Nw hf 2	12 T
785	Brown, Benjamin.. }	Nw hf 3	12 T
792	Bass, Jesse .....	Se hf 6	12 F
793	Brooks, Kinchon ....	E pt s cor 6	12 F
865	Butler, George.....	N qr 2	13 F
870	Brenan, Moses .....	Nw pt n qr 6	13 F
871	Brown, Lewis .....	Nw pt S qr 7	13 T
394	Clarke, James .....	S qr 1	8 T
415	Clark, Thomas .....	Nw hf 5	8 F
522	Clark, James.....	N qr 6	9 F
524	Carter, Lewis .....	S qr 6	9 F
606	Craft, John .....	Se hf 1	10 T
625	Cooper, Ezekiel C ..	N qr 6	10 F
710	Carter, William.....	Se hf 4	11 F
775	Charles, William ....	W cor 1	12 H
786	Carter, John.....	4	12 F
401	Doyle, Patrick .....	E qr 2	8 F
514	Dillon, Timothy .. }	Se pt 3	9 F
515	Dillon, Matthew .. }	do	9 T
516	Dillon, Michael.....	Se hf 4	9 F
520	Dillon, Martin .... }	Nw hf 5	9 F
521	Dillon, Patrick F... }	do	9 F S
605	Dillon, James .....	Se hf 1	10 F
608	Dooley, Patrick ....	w qr 2	10 F
621	Drew, Martin .... }	Nw hf 5	10 F
622	Drew, William.... }	do	10 F
866	Donaldson, John ....	E qr 4	13 F
897	Dunbrook, Charles ..	Se hf 5	13 F
868	Doane, Charles.....	S qr 6	13 F

No. on Roll.	NAME.	Lot.	Con. or Street.
393	Eagon, John . . . . .	W pt nw hf 1	8 F
397	Eagon, Patrick . . . . .	do	8 F
398	Eagon, Martin . . . . .	do	8 F
426	Emmanuel, Joshua . . . . .	W qr 7	8 F
402	Flaherty, John . . . . .	S qr 3	8 F
403	Flaherty, Patrick . . . . .	E qr 3	8 F
417	Forhan, Patrick . . . . .	W qr 6	8 F see sub-div No. 1
510	Finn, Wilham . . . . .	Nw hf 1	8 F
612	Flaherty, Michael . . . . .	Se hf 3	10 F
618	Finlan, Patrick . . . . .	Nw $\frac{1}{2}$ se hf 5	10 F
619	Finlan, James . . . . .	do	10 F
620	Finlan, William . . . . .	Se hf se hf 5	10 F
696	Frazer, William . . . . .	E pt s cor 1	11 F
706	Foxton, John . . . . .	2	11 F
782	Frazer, Samuel & . . . . .	Ne pt e qr 2	12 F
783	Frazer, Daniel . . . . .	do	12 T
416	Green, Gabriel . . . . .	N qr 6	8 F see sub-div. No 4
611	Gilhula, Patrick . . . . .	Se hf 2	10 F
629	Gambie, James M. . . . .	W quar 7	10 F
630	Gambie, William . . . . .	N pt n qr 7	10 F
708	Gleason, Patrick . . . . .	Nw hf 3	11 F
709	Gilhula, Timothy . . . . .	Nw hf 4	11 F
723	Graham, Robert & . . . . .	S qr 7	11 F
724	Graham, William . . . . .	"	11 F. S.
795	Gillam, Edward . . . . .	W quar 7	12 F
796	Goodall, Squire J. . . . .	N quar 7	12 F
413	Hickey, Denis . . . . .	Se hf 5	8 T
414	Hickey, William . . . . .	"	8 F
419	Harrison, Duncan . . . . .	Se hf 6	8 F
424	Houston, John . . . . .	Sw pt E qr 7	8 F See sub-d. nos. 1, 2
425	Herrington, Henry . . . . .	E pt E quar 7	8 F
523	Houston, Duncan . . . . .	W quar 6	9 F
613	Hickey, Patrick Sr . . . . .	Se hf 4	10 F
614	Hickey, Patrick Jr . . . . .	"	10 F. S.
693	Hall, Walter . . . . .	Nw hf 1	11 T
778	Hall, Samuel . . . . .	Se hf 1	12 F
779	Hall, David . . . . .	"	12 F. S.
717	Johnson, Samuel P. . . . .	W quar 6	11 F
872	Johnson, Aaron . . . . .	Se pt S qr 7	13 F
628	Kearney, Samuel . . . . .	E quar 6	10 T
780	Kearney, James . . . . .	Cen pt Se hf 2	12 F. S.
781	Kearney, George E . . . . .	"	12 F. S.
787	King, John . . . . .	Sw pt 5	12 F
788	King, Hilliard . . . . .	Ne cen pt 5	12 F
789	King, James . . . . .	Sw pt nw hf 6	12 F
790	King, William H. . . . .	"	12 F. S.
791	King, William . . . . .	Ne pt nw hf 6	12 F
885	Kearney, George E. . . . .	S quar 4	13 F

igh, from  
nd 8, from  
oncessions

municipal  
embly.

div No. 4

No. on Roll.	NAME.	Lot.	Cor. or Street.
395	Lewis, George.....E	quar 1	8 F
623	Lee, John.....W	quar 6	10 F
626	Leach, William D....S	quar 6	10 T
399	McCarte, Thomas....Nw	hf 2	8 F See sub-d. no. 1.
406	Martin, David.....W	quar 4	8 T
407	Martin, Francis Jr } N	quar 4	8 F. S.
408	Martin, Francis Sr } "	"	8 F
512	McKoon, Christopher } Nw	hf 2	9 F S
513	McKeon, John.... } "	"	9 F
529	Martin, Cupid.....N	quar 7	9 F See sub-d. no. 4
609	McNamara, John....N	quar 2	10 F
616	McKeon, John.....Nw	hf 4	10 T
633	Morris, John N.....E	quar 7	10 F See sub-d, no. 4.
697	Marshall, James....Ne	pt Se pt 1	11 F
699	Marshall, John.... } Cen	pt S quar 1	11 F
700	Marshall, Willam... } "	" "	11 F
701	Marshall, George C } "	" "	11 F
702	McCoun, Robert... } "	" "	11 T
707	McNeil, Malcolm....Se	hf 3	11 F
711	Morden, Daniel.....Se	hf 5	11 T
777	McNeil, Charles.....N	quar 1	12 F
862	Mason, James &... } Se	hf Se hf 1	13 F
863	Mason, John..... } "	" "	13 F. S.
912	McNeil, Alexander...1		14 F
405	Peirce, Lafayette....Ne	pt nw hf	8 F
393	Phelan, Walter.....S	quar 1	8 F
411	Phelan, James.....Se	hf S quar 4	8 F
420	Poole, Peter.....S	pt S quar 7	8 F
720	Pratt, William.....W	quar 7	11 F
410	Ryan, Michael.....Ne	pt Se quar 4	8 F
416	Robbins, Archie.....N	quar 6	8 T
526	Rouse, Noah.....E	quar 7	9 F
627	Robinson, William...S	quar 6	10 F
718	Randall, Joseph....Se	hf 6	11 F
798	Ryan, Martin... } Se	pt 7	12 F
797	Ryan, William.... } "	"	12 F
861	Russell, William...Nw	hf Se hf 1	13 F
404	Sullivan, Thomas....Nw	hf 3	8 F
624	Smith, Samuel.....N	quar 6	10 T
694	Struthers, James C..Nw	hf 1	11 F
703	Sales, George.....Se	hf 1	11 F
704	Smith, Abraham....W	cor Se hf 1	11 F
712	Stephens, Nathan....Se	hf 5	11 F
774	Stewart, William T..W	cor 1	12 H
776	Sullivan, Patrick....W	quar 1	12 F
869	Simms, James.....Ne	hf E quar 6	13 F
913	Snell, George.....2		14 F
632	Taylor, George.....S	quar 7	10 F
873	Thomas, John.....Nw	pt 7	13 T

No. on Roll.	NAME.	Lot.	Con. or Street.
400	Wallace, William....	S quar 2	8 F
525	White, Ambrose....	E quar 6	9 F
523	Williams, James....	W quar 7	9 F
610	Woods, Joseph.....	N quar 2	10 T
631	Washington, Alfred..	W pt n quar 7	10 F
713	Wellwood, William..	Se hf nw hf 5	11 F
714	Wellwood, Samuel...	Nw hf nw hf 5	11 F
715	Williams, Henry.....	N quar 6	11 F
864	Watts, Charles.....	W $\frac{1}{2}$ & Se hf 2	13 F
874	Washington, Isaac...	Nw pt 7	13 F

**Part II.--Persons entitled to vote at Municipal Elections only.**

No. on Roll.	NAME.	Lot.	Con. or Street.
875	Brooks, William....	N pt n quar 7	13 F
422	Johnson, William....	S cor E qr 7	8 F
705	McCarthar, John C..	Cor pt S qr 1	11 F
695	Sales, Zechariah....	S quar 1	11 F
427	Scott, Alexander....	Ne pt n qr 7	8 F
527	Williams, Solomon...	W cor 7	9 H

**Part III.--Persons entitled to vote at Elections to the Legislative Assembly only.—None.**

**Polling Sub-Division No. 4,**

Comprising all that portion of the said Township of Raleigh from the line between Concessions A and B to the line south of the 14th Concession, from the line between lots 7 and 8 to the line between lots 14 and 15.

**Part I.—List of persons entitled to vote at both Municipal Elections and Elections to the Legislative Assembly**

No. on Roll.	NAME.	Lot.	Con. or Street
533	Anthony, Samuel....	E pt S quar 9	9 F
655	Anderson, John F....	W quar 12	10 F
1153	Allen, Robert J..	Cr St 2,3 North Buxton	F
435	Brown, Thomas....	Se hf Se hf 9	8 F
440	Bond, Horace M....	Nw hf nw hf 9	8 T
444	Blevens, Owen.....	Nw hf Se hf 10	8 T
532	Berkley, George....	N quar 8	9 F
540	Burfitt, Norris....	Se hf nw hf 10	9 F
541	Burfitt, James....	"	9 T
549	Black, Robert.....	E pt S quar 12	9 F
730	Bennett, John E..	Nw pt 9	11 F
731	Bennett, Orlando &	"	11 F. S.
732	Bennett, George A }	"	11 F. S.
745	Broadbent, John... }	12	11 F
746	Broadbent, Eli.... }		11 F S
804	Brown, John L.....	W quar 9	12 T
805	Brady, Thomas.....	Se hf 9	12 F See sub-d. no. 3,
801	Broadbent, Andrew..	Nw hf 12	12 F

No on Roll.	NAME.	Lot,	Con. or Street.
820	Bump, George.....	Nw hf Se hf 14	12 F
821	Bump, William.....	Se hf Se hf 14	12 F
822	Bennett, George... }	Ne pt N quar 14	13 F See sub-d. no. 5.
823	Bennett, Stephen... }	W quar 15	13 T " "
824	Bennett, Joseph... }	"	13 T " "
825	Bennett, Walter... }	"	13 T " "
916	Broomfield, Edward..	Se hf Se hf 9	14 F
919	Broderick, George....	N cor 12	12 T
434	Cooper, Ezekiel.....	E quar 8	8 F
452	Chatham, Prince.....	E quar 11	8 F
645	Coleridge, George....	Nw pt nw hf 19	10 F
649	Carter, James.....	W hf n quar 10	11 F
650	Caughey, John.....	Se pt N quar 12	10 F
876	Cleaud, James E....	W quar 8	13 F
917	Cleve, James.....	Se pts 11&12	14 F
1143	Coutts, George.....	7 Buxton Village	F
430	Dabeny, James H....	N quar 8	8 F
4 1	Dabeny, Johnson H..	N quar 8	8 T
443	Doo, Green.....	Se hf Se hf 10	8 F
451	Disney, Rev'd.....	N pt N quar 11	'8 F
461	Dillon, Simon.....	Se half 14	8 F
551	Doyle, James.....	Nw hf Se hf 13	9 F
637	Doo, William.....	Nw hf 8	10 F
638	Ducat, Daniel.....	Nw hf nw hf 9	10 F
658	Ellerback, Marshall }	Nw hf nw hf 13	10 F
659	Ellerback, Richard }	" "	10 Oc.
660	Ellerback, William. }	Se hf nw hf 13	10 F
661	Ellerback, Lafayette }	" "	16 F
749	Echlin, Daniel C....	Pt S cor 10	11 Oc.
878	Ellis, Joseph.....	Nw hf 9	13 F
879	Ellis, Joseph R....	"	13 F. S.
432	Freeman, Jeremiah N.S	hf S qr 8	8 F
309	Falconer, William....	W cor 11	12 T
817	Franklin, George....	N quar 13	12 Oc.
922	Freeman, Jeremia'h }	Se pt 14	14 F
923	Freeman, Ehr..... }	"	14 F. S.
457	Green, Gabriel H....	Nw hf 13	8 F See sub-d. no. 3.
458	Green, Marsales H..	"	8 F. S.
530	Goodson, Isom.....	S quar 8	9 F
538	Geals, William H....	Nw pt Se hf Se hf 9	9 F
516	Glenn, Samuel.....	N quar 11	9 F
547	Gleuz, Sannel McC }	"	9 F. S.
639	Garle, Joseph... }	Nw hf nw hf Se hf 9	10 F
639	Garle, James..... }	" "	10 T
644	Garle, William H....	cen pt nw hf 10	10 F
648	Grey, Peter.....	N hf n qr 11	10 F
654	Guy, Watson Sr. ....	N cor N qr 12	10 F
657	Guy, Watson....	Nw hf nw hf Se hf 13	10 F
743	Goulet, John,.....	Se hf 14	11 F

N on. Roll.	NAME.	Lot,	Cor. or Street.
877	Gross, Richard..	N quar 8	13 F
1140	Gilhula, James....	Sw pt 2 Buxton	F
1141	Gilhula, William... }	" "	F.S.
1145	Gilhula, James H....	9 & 10 "	F
1173	Goulet, Alexander...	Se pt 8	14 F See sub-d. no. 6.
1149	Griffin, Frederick..	King St. 2 North Buxton	F

448	Harrison, Jordan....	N pt w qr 11	8 F
453	Hitchcock, Samuel..	Se pt S qr 11	8 F
477	Hooper, Rowen.....	Sw hf nw hf 14	9 T
459	Houston, John.....	W quar 14	8 F See sub-d.no.1,2,3
542	Henderson, Charles..	Se pt Se hf 10	9 F
544	Hitchcock, Samuel & }	W quar 11	9 F
545	Hitchcock, George.. }	" "	9 F.S.
553	Higgins, William.....	W quar 12	9 F
556	Hackett, Eliphalett }	Se hf 14	9 F
557	Hackett, John..... }	W hf w quar 11	10 F
558	Hackett, William.. }	" "	10 T
662	Hackett, Thomas....	Se hf Se hf 13	10 F
739	Hatter, George W....	Se pt 10	11 F
800	Haskell, Richard....	S quar 8	12 T
801	Haskell, Daniel.....	E quar 8	12 T
883	Henrys, William.....	N pt w qr 11	13 T
1136	Hancock, Zechariah..	20, 21,22,23 & Sw cor	F
		10, Buxton Village	F
1138	Hosey, James W....	Ne pt 2,3 & 7 Buxton	F

441	Jones, Samuel.....	Nw hf nw hf 10	8 F
808	Jones, John W.....	E quar 11	12 T
880	Johnson, Abraham. }	Nw hf nw hf 10	13 F
881	Johnson, William.. }	" "	13 F S
920	Johnson, George H }	Nw hf 12	14 F See sub-d. no. 6.
920	Johnson, Freeman B }	Nw hf 11	14 F
921	James, Coleman.....	S quar 13	14 F
1152	Johnson, Isaac C..	C'r St 1 North Buxton	F

429	Kersey, Hurlbert D..	Ne hf w qr 8	8 F
726	Kelly, Harvey... ..	W hf w qr 8	11 F
736	King, William Rev..	C'r Se hf 9	11 F
1137	Kay, Andrew..	14,15 Swpt 16,17,18, Buxton	F
456	Lacouq, John W....	Nw hf 12	8 T
737	Lyons, Thomas.... }	C'r Se hf 9 & 10	11 F
738	Lyons, Walter..... }	" "	11 T

584	McGregor, Hector....	Se hf Se hf 13	9 F
543	Moore, William.....	Se hf E qr 11	9 F
633	Morris, John N.....	S hf S quar 8	10 F See sub-d. no. 3
634	Morris, Hiram.....	E hf S qr 8	10 F
647	McKay, George.....	S quar 11	10 F
886	Morris, James.....	N quar 11	13 F
914	Moore, Alexander & }	Nw hf Se hf 9	14 Oc.
914	Moore, Thomas.... }	" "	14 F See sub-d. no. 6.

534	Nuby, Solomon.....	E pt E qr 9	9 F
-----	--------------------	-------------	-----

d. no. 5.

" "  
" "

no. 3.

No. on Roll.	NAME.	Lot,	Con. or Street.
475	O'Rourke, James	Sw pt Nw hf 14	9 F See sub-d. no. 5
536	Parks, Andrew	Se hf nw hf 9	9 T
652	Phares, Robert	S hf S qr 11	10 F
747	Pepper, Richard	Se hf 13	11 T
818	Pardo, Andrew	Nw hf 14	12 F
819	Pardo, John	"	12 F. S.
436	Robbins, James	Nw hf nw $\frac{1}{2}$ Se hf 9	8 F
438	Rann, Henry	Nw hf Se hf nw hf 9	8 F
439	Rann, William	Se hf Se hf Nw hf 8	8 T
460	Robinson, John	N quar 14	8 F
535	Riddle, Alexander	Nw hf nw hf 9	9 F
548	Roobins, Joseph	E quar 12	9 F
550	Robbins, John	S pt S qr 12	9 F
727	Ross, Robert	N pt nw hf 8	11 F
728	Ross, James	" "	11 F. S.
729	Ross, Samuel	" "	11 F. S.
741	Ryley, Isaac	Nw hf 10	11 F
742	Ryley, William	"	11 F. S.
743	Roe, John	Se hf 11	11 F
744	Roe, John Jr.	"	11 T
816	Robinson, John	W quar 13	12 F
428	Small, Acie	W hf w hf 8	8 F
437	Smith, Archibald	C'r pt Se hf 9	8 F
440	Smith, James	Nw hf nw hf 9	8 F See Sub-div no. 5
446	Steele, James E	w pt n $\frac{1}{4}$ & cen pt 11	8 F see Sub-div. no. 1
447	Steele, Irwin	do	8 T
454	Slade, Robert &	Se pt 12	8 F see Sub-div no. 5
455	Slade, Arthur	do	8 T
531	Starkes, Alexander	W qr 8	9 T
5 9	Stone, Thomas	Nw hf se hf. 10	9 F
552	Smith, Edwin	N qr 12	9 F
651	Smith, John H.	E hf e qr 11	10 F
735	Simms, Joseph	Se pt 9	11 T
802	Shreves, Felix A	W qr 8	12 F
915	Sykes, Edmund	Nw $\frac{1}{2}$ se $\frac{1}{2}$ se $\frac{1}{2}$ 9	14 F
449	Thomas, Henry	W pt w qr 11	8 F
635	Toyer, Henson	E $\frac{1}{4}$ 8	10 F
636	Toyer, Ralph	do	10 F S
645	Toyer, Walter	Se $\frac{1}{2}$ se $\frac{1}{2}$ 9	10 F
656	Taylor, Hugh	Cen pt se hf 13	10 F
641	Vincent, Henry	Cen pt se hf 9	10 F
433	Wright, William	E hf s qr 8	8 F
445	Wilson, Hugh	Nc hf s qr 11	8 F see sub-d'v no. 1.
459	Wilson, John J	N pt n qr 11	8 T
670	White, Albert H	Nw hf 14	9 F see Sub-div no. 5
559	Wangh, James	N qr 13	9 F
554	Wallace, Thomas	W qr 13	9 F
645	Ward, Andrew T	Se hf 10	10 F
733	Washington, John H.	S qr 8	11 F

No. on Roll.	NAME.	Lot.	Con. or Street.
810	Wood, Charles	Cen pt nw hf 11	12 F
812	Williams, Henry	E qr 12	12 F
813	Williams, Joseph	do	12 T
814	Williams, Abraham	do	12 F S
883	White, Stephen	N pt w qr 11	13 F see Sub-div no. 5
918	Wright, William	Nw pts se 1/2 s 11 & 12	14 F
1150	Walker, William P.	1 N. Bux. King St	F
1154	Williams, Isaac	Cen r'd W 12 & 13 N Bux	F

**Part II.--Persons entitled to vote at Municipal Elections only.**

No. on Roll.	NAME.	Lot.	Con. or Street.
734	Gants, Edward	E cor nw 1/2 9	11 T
1155	Garle, William	Gabriel st 28, 29 N Bux	F
807	Hooper, William	S qr 11	12 H
884	King, Hiram	W pt w qr 11	13 F
806	Thompson, John B.	S cor 11	12 T
1139	Thomas, John	4 Buxton	F
1144	White, Parker	5 Buxton	F

**Part III.--Persons entitled to vote at Elections to the Legislative Assembly only.—None.**

**Polling Sub-Division No. 4.**

Comprising all the land lying in the Township of Raleigh between the centre of the 8th concession, to the line between the 13th and 14th concessions, from the line between lots 14 and 15 to the Townline between Harwich and Raleigh.

**Part I.—Persons entitled to vote at both Municipal Elections and Elections to the Legislative Assembly.**

No on Roll.	NAME.	Lot.	Con.
601	Andrews, Joseph	Nw cen pt se 1/2 25 9	T
762	Adams, Hamilton	W hf n qr 22	11 T
763	Adams, Williams	W qr 22	11 F
890	Apthorpe, George	W qr 18	13 F
895	Apthorpe, John	E pt nw 1/2 21	13 F
896	Apthorpe, Charles	do	13 F S
464	Ball, John	Ne pt se hf 15	8 T see sub-div no. 2
492	Backhouse, John	E qr 21	8 F
565	Brady, Philip	N qr 16	9 F
566	Brady, James	do	9 F S.
567	Barrons, Robert	Sw hf 17	9 F
568	Barrons, Michael	Ne hf 17	9 F
576	Briene, Edward	S hf S quar 21 9	F
587	Blackwell, John	S quar 23	10 T
688	Blackwell, Moses	S quarter 23	10 T
821	Bump, William	W quarter 15	12 F See sub-div No. 4
822	Bennett, George	N 1/2 & Se 1/4 15	12 F do do
823	Bennett, Stephen	“ “ “	12 T do do
824	Bennett, Joseph	“ “ “	12 T do do



No. on Roll.	NAME.	Lot.	Con. or Street.
825	Bennett, Walter . . . .	" " "	12 T do do
826	Broadbent, James. . . .	Nw hf 17	12 F
827	Broadbent, Peter. . . .	Se hf 16	12 F
832	Broadbent, William } . . . .	Nw hf 18	12 F
833	Broadbert, Daniel } . . . .	do	12 F S
888	Broadbent, George . . . .	N qr 17	13 F
900	Boyes, John . . . . .	Se hf 22	13 T
901	Boyes, Joseph C . . . .	do	13 T
902	Boyes, James . . . . .	N qr 22	13 F
909	Boyes, Andrew. . . . .	Nw hf 24	13 F
1130	Boyes, Robert. . . . .	bet 9, 10 & 27 Char Cross	F
498	Carley, Owen. . . . .	Sw pt se hf 22	8 F
499	Carley, Michael. . . . .	Ne pt se hf 22	8 F
500	Carley, James . . . . .	E qr 23	8 F
501	Clark, Charles . . . . .	N pt sw hf 23	8 F see sub-div. No 2
663	Cummings, James. . . .	N w hf 15	10 F
664	Cummings, John. . . . .	do	10 F
666	Carpenter, James. . . .	S corner 16	10 F
829	Calhoun, Joseph. . . . .	E quar 17	12 F
830	Calhoun, James. . . . .	do do	12 F
892	Cox, Philip. . . . .	N quar 20	13 F
893	Cox, William. . . . .	W quar 20	13 F See sub-div No 6
894	Cox, Benjamin. . . . .	do do 20	13 F do do No 6
1134	Cameron, John. . . . .	1, 2, 3, 4, & 7 Char. Cross	F
481	Doyle, Peter. . . . .	E pt Se 1/4 19	8 F
482	Doyle, Thomas. . . . .	do do 19	8 F S
483	Doyle, Lawrence. . . . .	do do 19	8 F S
484	Dcyle, Michael. . . . .	S hf S quar 19	8 F
562	Doyle, John L. . . . .	N w hal <sup>c</sup> 15	9 F
563	Doyle, Lawrence. . . . .	do do 15	9 F S
572	Doyle, John. . . . .	Nw half 19	9 F
583	Doyle, James M. . . . .	W part 21	9 T
596	Dale, Richard B. . . . .	W quarter 24	9 F
678	Dillon, Patrick. . . . .	Sw pt Nw hf 21	10 T
679	Dillon, Owen. . . . .	do do 21	10 T
690	Davison, Alfred. . . . .	Pt 25	10 T
856	Drury, Robert . . . . .	25	12 F
857	Drury, George . . . . .	25	12 T
858	Drury, Francis. . . . .	25	12 T
859	Drury, Robert Jr. . . . .	25	12 T
860	Drury, Oliver. . . . .	25	12 T
560	Eaves, Thomas. . . . .	S quarter 15	9 F
673	Evans, Benjamin. . . . .	E quarter 20	10 F
675	Early, Patrick . . . . .	S qr 21	10 F
676	Early, John . . . . .	E qr 21	10 F
677	Early, James. . . . .	S qr 22	10 F
841	English, James. . . . .	Se hf 22	12 F
842	English, John W. . . . .	do	12 F S
839	Fuce, James . . . . .	Se hf 21	12 F see Sub-div no. 6
840	Fuce, Oliver J . . . . .	do	12 F S do
597	Gregory, James. . . . .	N qr 24	9 F

No on Roll.	NAME.	Lot,	Con. or Street.
600	Gregory, John	Nw pt 25	9 F
749	Gonlet, Louis	Se hf 15	11 F
1135	Giddins, William	5,6,7,8& 10 Char- ing Cross T L b'n 5th & 6th street,	
477	Hooper, Rowen	E qr 18	8 T see Sub-div no. 4
494	Hea, James	S qr 21	8 F
495	Hea, James H	do	8 F S
561	Horn, Robert A	E qr 15	9 F
564	Horn, Oscar	W qr 16	9 F
578	Highgate, Oliver	Se hf 22	9 F
579	Highgate, Thomas	do	9 F S
595	Hinton, Samuel	E qr 23	9 F
598	Higgins, Lawrence	S qr 24	9 F
599	Hammond, Charlef	E qr 24	9 F
680	Hogan, Patrick	N hf n qr 21	10 F
751	Hinds, John	E qr 16	11 F
846	Harvey, George	Nw hf 23	12 F
847	Harvey, Silas J	do	12 F
855	Harvey, Solomon	Se hf 24	12 F
903	Harvey, George T	W qr 22	13 T
910	Harvey, William	Se hf 24	13 F
1129	Haskell, James	10,11 C.C. 3d St, N <sup>h</sup>	F Francis Survey.
1131	Hunter, John	N <sup>e</sup> ½ 8 Char Cross	F McGeorge's Sur.
603	Jackson, Charles	Se cen pt Se ½ 25	9 F
681	Jordan, Richard	E quar 22	10 T
757	Jenner, John	Se half 18	11 F
757½	Jenner, John E	" 18	11 F S
756	Jenner, Alfred	" 18	11 T
760	Jenner, Thomas	S w half 21	11 F See sub-div.No. 6
761	Jenner, Peter J	Ne half 21	11 F do do
836	Jenner, William E	Nw half 20	12 F do do
898	Johns, Joseph	E quarter 21	13 F
899	Johnson, John	W pt N w ½ 21	13 F
587	Kennedy, Alex. M	W quar 20	9 T
588	Kennedy, Allen	do 20	9 T
476	Lacy James	E quarter 18	8 F
573	Lynch, Peter	Nw pt Sw pt Se hf 19	9 F
574	Lynch, Thomas	S corner 19	9 F
582	Lark, John	W hf N qr 21	9 F
691	Laurie, James	Pt 25	10 F
764	Liddy, James	E qr. & ne ½ n ¼ 22	11 T
765	Liddy, Marshall	do do do	11 T
834	Linley, Walter	Nw hf 19	12 F
911	Lancuz, Lachlin	25	13 F
1126	Laurie, George	1 Charing Cross 4th St	F
465	Mount, Peter	E pt Se hf 15	8 F See sub-div.No. 2
467	McCormick, John	Se hf 16	8 F
503	Mount, John	S quarter 21	8 F

No. on Roll.	NAME.	Lot.	Con.	er Street.
505	McPherson, Donald	{ Se part 25	8	F
506	McPherson, James	{ E quarter 24	8	F
593	McNall, John	.....N quarter 23	9	T
601	Mercer, John	.....Cent pt Se $\frac{1}{2}$ 25	9	F See sub-div No 6
667	McCullum, Edwin	.....Nw $\frac{1}{2}$ Nw $\frac{1}{2}$ 17, 18	10	F
682	Mummery, Arthur R	Nw half 22	10	F
828	Miller, William	.....S quarter 17	12	T
831	Matthews, Jonathan	Se hf 18	12	F
1133	McEachran, William	.....5, 6, 9, 10, 11, 12, 13, 14, 15, 16, 17, 18, 19, 20 & c.		F Charing Cross, New Survey
586	O'Connor, Henry M.	.....N pt N qr 20	9	T
475	O'Rougke, James	.....S quarter 18	8	Oc. See sub-d No. 2
478	O'Neil, James	.....Se half 17	8	F
669	O'Neil, James Jr.	.....S E hf 19	10	F
589	Prothro, David	.....Nw hf 22	9	F
591	Parks, Henry	.....} W qr 23	9	T
592	Parks, John	.....} do	9	T
594	Robinson, Nelson	.....S qr 23	9	F
671	Ritchie, Duncan	.....W qr 20	10	F
672	Ritchie, Robert	.....N qr 20	10	F
673	Ritchie, Michael	.....N qr 20	10	T
843	Russell, James	.....S qr 23	12	F
844	Russell, Thomas &	{ E qr 23	12	F
845	Russell, Wesley	do	12	F S
887	Rushon, Thomas	.....N qr 16	13	F
904	Russell, Jeremiah G	S qr 23	13	F
905	Russell, Henry	.....} Nw hf 23	13	F
906	Russell, Stephen	do	13	F
907	Russell, George	.....} E qr 23	13	F
908	Russell, Paul	.....} W pt nw hf 24	14	F
462	Shea, Daniel	.....} Se hf 15	8	F
463	Shea, John	.....} do	8	F
689	Smith, Edward	.....24	10	F
750	Scaman, Sidney	.....S qr & nw hf 16	11	F
752	Sales, William	.....E qr 16	11	T
759	Scaman, Benjamin	.....20	11	F
766	Smyth, Henry	.....E $\frac{1}{4}$ & n $\frac{1}{2}$ n qr 22	11	F
837	Shepley, Samuel	.....} Nw hf 21	12	F
838	Shepley, Nelson	do	12	F
848	Skinner, Harold	.....Nw hf 22	12	H
877	Smith, James	.....S qr 21	13	F
1127	Smith, John	.....10 & 11 Char C TL		T see Sub-div 1, 3, 4
493	Towl, George	.....S pt E qr 21	8	F
580	Towl, Samuel	.....} Nw hf & e $\frac{1}{4}$ 21	9	F
581	Towl, Frederick	do	9	T
585	Toomey, Michael	.....W qr 21	9	F see Sub.div no. 6
604	Taylor, Thomas	.....Nw pt se hf 25	9	F
665	Tremaine, Thomas	.....S cor 16	10	F
668	Thomas, John	.....Se $\frac{1}{2}$ nw hf 17 & 18	10	T

No. on Roll.	NAME.	Lot.	Con. or Street.
575	Williamson, John	Se hf 20	9 T
571	Waddick, John	Se hf 18	9 F
577	Waddick, James	E hf s qr 21	9 F
602	Williams, James	Cen pt se hf 25	9 F
670	White, Albert H	Nw hf 10	10 F see Sub div no. 4
683	Wright, Thomas	Ne hf 23	10 F
684	Wright, Charles	do	10 F
685	Wright, Robert	do	10 T
686	Wright, George	do	10 F S
753	White, Daniel	Se $\frac{1}{2}$ & ne ptn $\frac{1}{2}$ 17	11 F
754	White, Walter W.	do	11 T
755	White, James J	do	11 F S
758	Wallace, Samuel	Se hf aw hf 18	11 F
767	West, Salem &	Sw hf 23	11 T
768	West, George	do	11 F
769	West, Silas	Ne hf 23	11 F see Sub-div no. 3
770	White, Stephen	Pt 24	11 F do 4 & 6
771	White, John W	do	11 F S
772	White, Sylvester S.	do	11 F S
835	Walker, James	Se hf 20	12 F
850	White, Cyrus J.	Nw hf 24	12 T
851	White, Joseph H.	do	12 T
852	White, Edward G.	do	12 T
853	White, Arthur W.	do	12 T
854	White, John C	do	12 T
1128	Walker, David	10 & 11 TL Char	C F Francis' Survey
1132	White, Solomon	5, 6, 9 to 25 & sw $\frac{1}{2}$ 8	Charing Cross, .. F McGeorge survey

**Part II—Persons entitled to vote at Municipal Elections only.**

No. on Roll.	NAME.	Lot.	Con. or Street.
692	Brown, John	E cor 25	10 F

**Part III.—Persons entitled to vote at Elections to the Legislative Assembly only.—None.**

**Polling Sub-Division No. 6,**

Comprising all the Lands lying South East of the 14th Concession, to the Line between Lots 14 and 15, thence of the Line between Concessions 13 and 14, from the Western to the Eastern boundary of said Township.

**PART I.—Persons entitled to vote at both Municipal Elections and Elections to the Legislative Assembly.**

No. on Roll	NAME.	Lot.	Con. or Street.
924	Allen, Thomas	S quarter 17	14 F
925	Brown, Jacob	Se hf Se hf 19	14 Og
934	Broadbent, Beaman	Nw half 23	14 F
935	Broadbent, Charles	do 23	14 F S
951	Brush, Stephen	Se half 17	15 F

No. on Roll.	NAME.	Lct.	Con.	or Street.
979	Bavin, Charles.....	Sw hf 140	T. R.	F
1029	Benedict, Charles...	Gore 19	16	F
1048	Burns, Palmer L... }	Sw hf 147	"	T
1049	Burns, John..... }	do 147	"	T
1094	Beaty, James.....	Ne pt 22, water	St.	F
1123	Burns, Egerton....	5 to 27 inclusive,	F	Deal Town.
893	Cox, William..... }	N quarter 18	14	F See sub-d No. 5.
894	Cox, Benjamin... }	do do 18	14	F do do
928	Clinansmith, Jacob..	Se hf 20	14	F
950	Cox, Miles.....	Se half 17	15	T
972	Clayton, William...	Sw pt E qr 24	15	F
993	Corcoran, Edward...	Ne pt Ne hf 129	T. R.	T
1010	Craford, Philander..	Nw part 134	"	F
1004	Craford, Magaess...	Ne half 133	"	F
1005	Craford, Samuel....	Sw part 133	"	F
1014	Craford William....	Ne half 135	"	T
1026	Cox, Joseph.....	139	"	T
1046	Clute, Wheeler D...	146	"	F
1083	Coatsworth, Arthur..	Sw quar 159	"	F
1101	Conlin, Stephen....	E cor 24 water st	"	T
1095	Claus, John..... }	E pt Ne half 23	"	T
1096	Claus, Philip..... }	do 23	"	F
982	Doey, Thomas.....	cen. pt Nw $\frac{1}{2}$ 21	16	F
1092	Douglas, William...	cent pt 22 water st	F	See sub-d No. 1.
839	Fuce, James..... }	E quarter 18	14	F do do No.5
840	Fuce, Oliver J..... }	do : 18	14	F do do No.5
942	Freeman, Bryant...	Nw pt & S cor 13	15	F
994	Flater, Frederick...	Ne pt Ne $\frac{1}{4}$ 129	T. R.	T
1065	Flater, Isaac..... }	Se pt & nw pt		
		of Sw $\frac{1}{2}$ 151	T. R. F	
1066	Flater, John..... }	do do 151	T. R. F S	
964	Gill, Thomas..... }	22	15	F
965	Gill, Edward..... }	22	15	F S
975	Green, Robert.....	Se part 25	15	T
980	Gray, Peter..... }	Nw part 20	15	F
981	Gray, James..... }	So half 20	15	F
1032	Griffin, Jacob.....	141	T. R.	T
1067	Goulet, George.....	Ne hf 152	"	F
1068	Goulet, John.....	Sw hf 152	"	F
1073	Goulet, Alexander..	Ne half 144	"	F See sub-d No. 4
1074	Goulet, Francis.....	Sw hf 154	"	F
942	Howard, James ....	Gore 11&12	15	F
962	Handet, John .....	S hf s qr 21	15	F
990	Heatherington, Jas. sr }	Sw hf 129	T R	F
991	Heatherington, John }	do	T R	F S
992	Heatherington, Jas. jr }	do	T R	F S
995	Heatherington, Jos. sr }	130	T R	F
996	Heatherington, Thos. }	130	T R	F
997	Heatherington, Jos. jr }	130	T R	F S

No. on Roll.	NAME.	Lot,	Con. or Street.
1021	Hamlet, Peter F W..	138	T R F
1022	Hamlet, Lamech . . .	"	" T
1023	Hamlet, William A..	"	" T
1024	Hamlet, Michael . . .	"	" F S
1039	Hutchinson, Robert..	Se pt sw hf 143	" F
1051	Huffman, Rudolph }	Sw hf 147	" T
1052	Huffman, William }	do	" T
1076	Hughson, Nathaniel }	156	" F
1077	Hughson, Hezekiah }	"	" F
1078	Hughson, John P. . . .	Ne hf 157	" F
1079	Hughson, Thomas W	Sw hf 157	" F
1080	Hughson, John S. . . .	Ne hf 158	" F
1081	Hughson, Francis. . . .	Sw hf 158	" T
1089	Hughson, Isaac. . . . .	164	" F
1091	Hudson, Richard . . . .	Cen pt 22	Water St T
1093	Hall, Robert. . . . .	Ne pt 22	" T
932	Irving, Samuel . . . . .	E qr 23	14 F
933	Irving, John . . . . .	S qr 23	14 F
960	Irving, David . . . . .	Nw hf 21	15 F
760	Jenner, Thomas . . . .	S quar 18	14 F See sub-d. no. 5.
761	Jenner, Peter J. . . . .	W quar 18	14 F " "
836	Jenner, William E. . . .	N quar 17	14 F " "
926	Johnson, Albert. . . . .	Se hf nw hf 19	14 F
927	Johnson, Silas W. . . . .	Nw hf nw hf 19	14 F
961	Jones, George. . . . .	Ne hf Se hf 21	15 F
1001	Johns, William. . . . .	Ne $\frac{1}{2}$ 132	Talbot road F
1006	Johnson, John. . . . .	Nw pt se $\frac{1}{2}$ 134	" F
1007	Johnson, Freeman B.	" "	T See sub-d. no. 4.
938	Keiver, William . . . .	Nw pt 25	14 T
1082	Kendall, John. . . . .	Ne hf 159	Talbot road F
959	Lott John. . . . .	N quar 20	15 F
970	Lane, Richard. . . . .	Nw $\frac{1}{2}$ & nw pt e $\frac{1}{2}$ 24	15 T
984	Leggitt, William. . . . .	Nw pt 25	16 T
1069	Little, James & } . . .	Ne hf 153	Talbot road F
1070	Little, James W } . . .	" "	" F S
1086	Lambert, Isaac. . . . .	Ne hf 162	" F
1110	Laurie, James. . . . .	3 & 16	Buckhorn block 2, Lee's survey F
1124	Lounsbury, Henry. . . .	1, 2 & 34,	Dealtown T
925	McDowell, Alexander. . .	Se hf Se hf 19	14 F See sub-d. no. 1.
937	McDowell, Joseph. . . .	Ne pt n qr 24	14 T
939	McDowell, John. . . . .	Nw pt 25	14 F
940	McDowell, Thomas. . . .	Se pt 25	14 F
957	Millar, James. . . . .	19	15 F
958	Millar, William. . . . .	19	15 F S
963	Murdock, Edward. . . . .	Nw hf 23	15 F
973	McGuigan, Charles. . . .	S quarter 24	15 F
983	McPherson, John. . . . .	W qr 24	16 F
985	Millns, John. . . . .	Cen pt Se hf 25	16 F
987	McPherson, Hugh. } . .	No part 1 29	T. R. F
988	McPherson, Duncan } . .	do do	" F S

No. 5.  
do

No. 1.  
No. 5  
No. 5

No. 4

No. on Roll.	NAME.	Lot.	Con. or Street.
1012	Mouk, Henry J. ....	Se part 134	" T
1017	Milns, Jesse.....	136	" F
1038	McDonald Alex.....	Se part Sw $\frac{1}{2}$ 143	" F
1044	Moore, Thomas....	Sw half 145	" F
1045	Moore, John.....	do do 145	" F S
1052	Michener, Joseph...	Ne part 151	" T
1071	Moody, John.....	Sw half 153	" T
1084	Moorhouse, Joseph..	Sw half 160	" F
1087	Manning, Henry....	Sw half 162	" F
1090	Mercer, John.....	Sw pt 22 water street	F See sub-d No. 5
1098	McGuigan, William }	Ne pt 24 do	F
1099	McGuigan, Nicholas }	do 24 do	F S
1100	McGuigan, Peter.. }	do 24 do	F S
1118	Miner, Halsey,....	Se pt 2 Buckh'n Vil.	T Stripp's Sur.
1119	Miner, Merritt....	do do do	T
1053	Newrich, John.....	Ne 3-quar 148	T. R T
1097	Nagles, James.....	Sw hf 24 water street	F
966	O'Phee, John.....	Se hf 23	15 F
969	O'Phee, Charles....	Nw hf 23	15 Oo
936	Perrett, Edwin....	Cr pt & e pt e $\frac{1}{2}$ 24	14 F
944	Pike, Samson &.. }	Sw pt 14	15 F
945	Pike, James..... }	"	15 T
948	Pike, George A.....	S cor 15	15 F
1018	Pardo, William H.. }	137 Talbot road	F
1019	Pardo, Thomas L.. }	" "	F S
1025	Pardo, Thomas L....	139 "	F
1031	Pardo, Samuel J....	Ne hf ne hf 142	TR F
1035	Pardo, Henry.....	Ne hf Sw hf 142	TR F
1072	Park, James D.....	Sw hf 153	T R F
930	Russell, Barnett S...	N quar 22	14 F
931	Russell, Edward J..	W qar 22	14 F
954	Rogers, James.....	E quar 18	15 F
977	Rolland, Alfred.....	Nw pt 25	15 F
986	Ransom, Frederick..	Nw pt Se hf 25	16 F
941	Segeo, Abraham....	Gore 10	15 F
947	Sullivan, John.....	Nw pt 15	15 F
952	Sandford, Stephen..	Sw hf S qr 18	15 F
953	Sandford, Joseph....	Ne hf S quar 18	15 F
963	Sandford, John M....	Cr hf Se hf 21	15 F
971	Shaw, Robert....	Nw $\frac{1}{2}$ & nw pt e $\frac{1}{2}$ 24	15 F
1000	Sheply, Joseph.....	Ne $\frac{1}{2}$ 132 Talbot road	T
1002	Stripp, William S....	131	T R Oo
1013	Stanton, Daniel....	Se pt 134	" F
1020	Sandford, Charles...	137	" T
1036	Stover, William & }	Sw hf sw hf 142	" F
1037	Stover, Charles.... }	Ne hf 143	" F
1041	Sandison, Samuel....	144	" F
1064	Smith, Edward.....	Se cen pt 151	" T
1085	Simpson, Thomas....	161	" F

No. on Roll.	NAME.	Lot.	Con. or Street.
1088	Simpson, Isaac	Ne hf 163	" F
1103	Smith, George E	E cor 24	Water St T
1106	Stripp, Louis O &	2, 3, 3 $\frac{1}{2}$ 1 to 7 10 to 14 17 to 20	Buckhorn F Old Survey
1107	Stripp, Thomas		
946	Turner, William	Ne pt 14	15 T
955	Taylor, Edward &	Nw hf 18	15 F
956	Taylor, William	do	15 F S
978	Thompson, Joseph	Cen pt 25	15 F
998	Taylor, James W	Se pt 131	T R F
999	Taylor, James E. M.	Sw hf 23	Water St T
1016	Tyrrell, James	Sw hf 135	T R F
1043	Taylor, William H	Ne pt 145	" F
1054	Toll, Phillip A	Ne hf ne hf 149	" F
1055	Toll, James C	Cen hf 149	" F
1058	Toll, David	Sw hf sw hf 149	" F
1059	Toll, Henry &	Sw hf 150	" F
1060	Toll, Malcolm	do	" T
1061	Taylor, Donald	S cor ne hf 151	" T
1063	Taylor, David	Ne pt 151	TR F
1111	Taylor, Thomas	4&15 Buckh'n bl'k 2	Lee's survey F
1117	Towl, Henry	7 " Stripp's	" F
769	West, Silas	S pt gore 5	14 F See sub-d. no. 5.
942	White, Stephen	Gore 12	15 F " "
1109	Walker, Arthur	1 Buckhorn old survey	T
1112	Wallcott, Abrather	12, 15&16 Buckh'n	Stripp survey F

### Part II.—Persons entitled to vote at Municipal Elections only.

No. on Roll.	NAME.	Lot.	Con. or Street
929	Clinansmith, Stephen	S quar 20	14 H
1102	Cameron, Malcolm	E cor 24	Water St. H
989	Hurns, James	Se pt 129	T R H
1034	Huffman, Theodore	Sw $\frac{1}{2}$ ne hf 142	" H
1115	Hughes, Richard A	9 Buck'n Bk 2	T
1120	McTavish, John	5 Buck'n	Lee's survey T Stripp's survey
1056	Peek, John	Cen pt 149	T R H
1105	Roy, Cyrus	E cr 23, s cr 24	W St T
1040	Thomas, George	Nw pt sw $\frac{1}{2}$ 143	T R T
1027	Webb, James	S cor sw hf 139	T R H
1122	Wells, William B	3, 4& 35	Dealtown F
1105	Woods, Robert	E cor 23 s cr 24	W St F
974	Young, Joseph	S qr 24	15 H

### Part III.—Persons entitled to vote at Elections to the Legislative Assembly only.—None.



I, JOHN JENNER, Clerk of the Municipality of the Township of Raleigh, in the County of Kent, do hereby certify that parts one and three of the above List, constitute a correct list for the year 1878, of all persons appearing by the last Revised Assessment Roll of the said Municipality, to be entitled to vote at Elections for Members of the Legislative Assembly ; and that parts one and two, constitute a correct list for said year, of all persons appearing by the said Roll, to be entitled to vote at Municipal Elections in said Municipality ; and I hereby call upon all Electors to examine the said lists, and if any omissions or other errors are perceived therein, to take immediate proceedings to have the said errors corrected according to law.

Dated this Eighth day of July, A. D., 1878.]

JOHN JENNER,

CLERK of the Township of Raleigh.

ship  
one  
78,  
the  
of  
e a  
, to  
and  
any  
ate

.

