

THE ACADIAN.

WOLFVILLE, N. S., MAR. 19, 1915.

Improvement and Increase.

The advice given in the most recent announcement of the Department of Agriculture at Ottawa to make your land produce more, cannot be over-emphasized. Millions of bushels rather than the cultivation of excess acres, should be Canada's aim. Improved production is only possible by the use of good, pure seed and by assiduous and knowledgeable attention to the soil.

As proof that there is abundant room for increased production by improvement, an official statement as follows is presented of the average yield of various products last year, and of the average that is possible:

Table with 3 columns: Crop, Average, Possible. Includes items like Fall wheat, Spring wheat, Barley, Oats, Corn, etc.

By 'possible', it is explained, is meant results actually obtained at the Experimental Farms and by many farmers under intensive cultivation. While such results may not be obtainable in every case on the average farm, strict attention to the selection of the seed, the use of fertilizers and thorough preparation of the soil will accomplish much.

Canadian Meteorological Station.

Table with 2 columns: Item, Value. Includes Max. bar, Min. bar, Mean temp., Departure, etc.

The Best Medicine For Little Ones.

Baby's Own Tablets are the best medicine for little ones. They are absolutely safe and never fail to regulate the stomach and bowels, break up colds and simple fevers, expel worms and make teething easy.

How many of the High School students can name the President of Switzerland, or its mode of government? Well Giuseppe Motis has just been elected Swiss President for the ensuing year.

Red Cross Gifts Appreciated.

Mr. (Dr.) DeWitt recently received the following acknowledgment of a box sent by the Red Cross Society here to France.

February 21st, 1915. DEAR MRS. DEWITT.—You have probably heard from Mrs. Oakes of the safe arrival of your box. I did not wish to write you until I could give you a few particulars as to the distribution of the contents.

The larger portion of the strictly hospital articles was sent to that very needy Roubaix Ambulance in the St. Malo barracks, where I know they will be received with joy.

The remainder I have held over till tomorrow when they are sent in Belgium, right up to the firing line, with a large consignment of socks which I have managed to get together.

By the way, the socks sent in your case have been much admired, and the general opinion is that they are much better made than those I have had knitted for me in the Y. W. C. A. over here or by my friends.

No advance in price on account of increase of 7 1/2% 'War Duty'. The price of an OVERLAND CAR, once established and advertised, is never changed during the current season.

By an Overland and a satisfied automobile owner as thousands of others are doing. Write at once for special prices and catalog.

Wolfville Garage J. B. Black, Mar. 19, 1915. I have been obliged to receive 65 Belgian refugees, rather a large percentage for such poor people.

Teams will leave Hutchinson's Stables at 8:45 a.m. Price 50 cents return trip. The following is the program: 10:00 Devotional exercises—Mrs. Morison.

On the premises, April 20th, 1915, at 11 a.m., that valuable and commodious residential property at Wolfville, owned by the Estate of the late C. R. Burgess.

Household Furniture in above dwelling, including a variety of valuable and antique articles. For further particulars apply to THE EASTERN TRUST COMPANY, 184 Hollis Street, Halifax, N. S.

FRIDAY & SATURDAY

Table with 4 columns: Item, Price. Includes BULK TEA, SODAS, Jams in Bins, etc.

R. E. HARRIS & SONS

PHONE 16-11.

MUSIC FESTIVAL

Acadia Seminary Conservatory of Music

MONDAY EVENING, MARCH 29, 1915.

Concert by the ACADIA ORCHESTRA, Thirty-five Pieces.

TUESDAY EVENING, MARCH 30.

THE BEAUTIFUL CANTATA

by Cowan, will be given by a well trained Chorus of SIXTY VOICES, assisted by the following artists:

FOR PRICES SEE LARGE POSTERS.

OVERLAND

No advance in price on account of increase of 7 1/2% 'War Duty'. The price of an OVERLAND CAR, once established and advertised, is never changed during the current season.



Overland Model 80

Buy an Overland and be a satisfied automobile owner as thousands of others are doing.

Write at once for special prices and catalog.

Wolfville Garage J. B. Black, Mar.

French people are lost in their praise of Canada, and the glorious way in which the Dominion has come forward. On all sides I hear most flattering remarks as to the magnificent appearance of the Canadian soldiers, and their grand work in the north.

Kings County W. C. T. U.

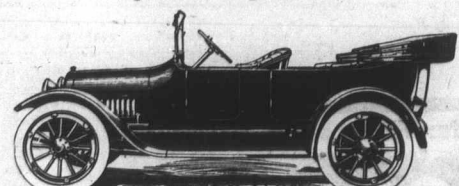
The Kings County W. C. T. U. will hold its annual Convention on Thursday, March 25th, in the Methodist church, Canning, at 10 a.m., and continuing all day.

On the premises, April 20th, 1915, at 11 a.m., that valuable and commodious residential property at Wolfville, owned by the Estate of the late C. R. Burgess.

Advertisement for King Cole Tea, featuring an illustration of a tea box and the text 'TASTEFUL SATISFYING KING COLE TEA You'll Like the Flavor 35c., 40c., 45c., 50c. per pound.'

McLAUGHLIN-BUICK

Nineteen Fifteen Models. Four and Sixes, tried out and found correct. Speed, power and dependability go hand in hand with the World's Famous Hill Climber and Road Car.



A. T. McCONNELL, WOLFVILLE, N. S. Agent for Kings County.

OPERA HOUSE

W. H. BLACK, MANAGER, WOLFVILLE.

MONDAY, MARCH 22th

"ACADEMY PLAYERS"

Will present for one performance only

Wm. H. Crane's Greatest Success

"THE SENATOR KEEPS HOUSE"

POPULAR PRICES. Reserved seats now on sale at Box Office, Phone 30-3. Doors, 7.45. Curtain, 8.15.

LADIES' TAILORING

The first of our SPRING STYLES have now arrived and Ladies desiring to have the latest in Tailored Garments, are invited to leave their order at their earliest possible convenience.

All our materials are of superior quality and the Style, Fit and Workmanship of our Garments are unexcelled.

A trial will convince you that the most satisfactory Garments are made by

H. E. BORN, THE LADIES' TAILOR

Sealy's Block, Cornwallis St., Kentville.

LARGE DISCOUNTS on all our Materials MADE UP OR PER YARD, during the present quiet season.

Evangeline Rink

BAND SATURDAY NIGHT

After to-day no more Afternoon Skating.

On the premises, April 20th, 1915, at 11 a.m., that valuable and commodious residential property at Wolfville, owned by the Estate of the late C. R. Burgess.

Ford Touring Car

Price \$590

F. J. PORTER, DEALER, WOLFVILLE, N. S.



Buyers to Share in Profit

All retail buyers of new Ford Cars from Aug. 1, 1914, to Aug. 1, 1915, will share in the profit of the company to the extent of \$40 to \$60 per car on each car they buy.

Household Furniture in above dwelling, including a variety of valuable and antique articles.

FOR SALE. Notice to Fruit Growers.

Before placing your order for Lime Sulphur Spray get our prices.

Melanson Mfg. Co., Ltd. MELANSON, N. S.

Special Linen and Cotton Sale

We have just opened two cases English Linens, which we have marked at fine prices.

TWO WEEK'S SALE.

Sheetings, Fine and Soft

1 3/4 yds. wide at 27c. 2 yds. wide at 32c. 2 1/4 yds. wide at 35 & 40c.

Pillow Cottons

40 inch, 22c. 42 inch, 24c.

Ready Made Sheets

1 3/4 wide at 75c. each. 2 wide at 85c. each.

WHITE COUNTERPANES at 95c., 1.25, 1.75 and \$3.00.

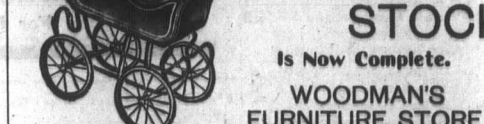
TABLE LINENS at 38c., 60c., 85c., 90c. Napkins to match.

ENGLISH WHITE FLANNELLETTE, wide and heavy at 13c.

J. D. CHAMBERS.

Get First Choice Our SPRING STOCK

Is Now Complete. WOODMAN'S FURNITURE STORE



WE SOLICIT Your Prescription Business.

WE OFFER Drugs of the Highest Purity Only.

WE USE Every possible safeguard against mistakes in compounding.

WE EMPLOY Only registered Prescription Clerks.

WE HAVE The fastest delivery in the town.

ACADIA PHARMACY

PHONE 41.

A LITTLE TIME, A VERY LITTLE MONEY

AND THESE BEAUTIFUL NEW WALL PAPERS WILL WORK WONDERS

Nobody can afford to let the walls of any room stay faded, soiled and shabby with the splendid values we are offering in 1915 Wall Papers.

Here are papers of wonderful beauty and quality including the latest novelties of the new season, and yet are priced within the reach of everyone.

The 1914 papers reduced to half their value.

FLO. M. HARRIS. WOLFVILLE BOOK-STORE.

HINTS TO KODAKERS

In the beginning—Light. No light, no photographs.

Indoors we control the light. Outdoors we control the Camera.

Wise Amateurs begin outdoors. Easier to control the Camera than light.

Strong light, short exposures—"Snap shots." Weak light, longer exposures—"Time."

If you want help on some other point, don't wait till next week's "lesson," but call and ask us about it.

Yours truly, GRAHAM

KOPPEL'S

5, 10, 15, & 25c STORE

Open Saturday, March 20th.

We have over 300 pieces of flowers, all different, for trimming this; also a large variety of Hat Shapes. Try our Chocolate Easter Eggs, made out of Pure Chocolate, our own make.

