

**CIHM
Microfiche
Series
(Monographs)**

**ICMH
Collection de
microfiches
(monographies)**



Canadian Institute for Historical Microreproductions / Institut canadien de microreproductions historiques

© 1997

The copy filmed here has been reproduced thanks to the generosity of:

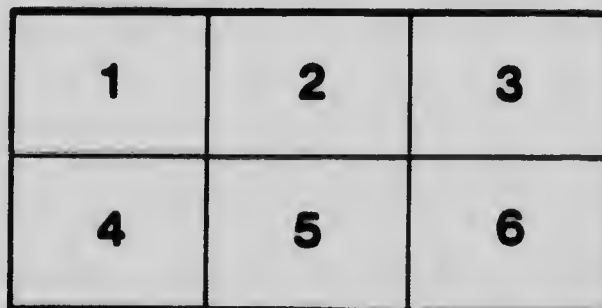
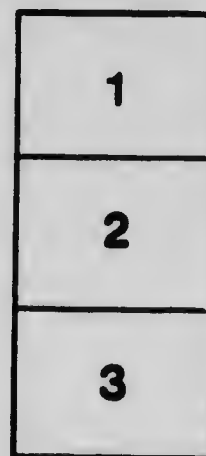
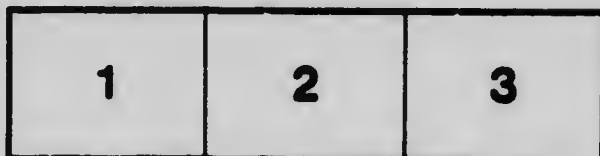
British Columbia Archives and Records Service.

The images appearing here are the best quality possible considering the condition and legibility of the original copy and in keeping with the filming contract specifications.

Original copies in printed paper covers are filmed beginning with the front cover and ending on the last page with a printed or illustrated impression, or the back cover when appropriate. All other original copies are filmed beginning on the first page with a printed or illustrated impression, and ending on the last page with a printed or illustrated impression.

The last recorded frame on each microfiche shall contain the symbol \rightarrow (meaning "CONTINUED"), or the symbol ∇ (meaning "END"), whichever applies.

Maps, plates, charts, etc., may be filmed at different reduction ratios. Those too large to be entirely included in one exposure are filmed beginning in the upper left hand corner, left to right and top to bottom, as many frames as required. The following diagrams illustrate the method:



L'exemplaire filmé fut reproduit grâce à la générosité de:

British Columbia Archives and Records Service.

Les images suivantes ont été reproduites avec le plus grand soin, compte tenu de la condition et de la netteté de l'exemplaire filmé, et en conformité avec les conditions du contrat de filmage.

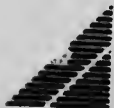
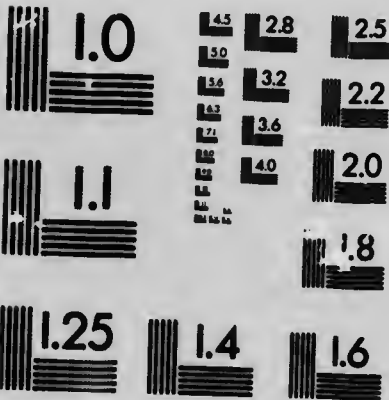
Les exemplaires originaux dont la couverture en papier est imprimée sont filmés en commençant par le premier plat et en terminant soit par la dernière page qui comporte une empreinte d'impression ou d'illustration, soit par le second plat, selon le cas. Tous les autres exemplaires originaux sont filmés en commençant par la première page qui comporte une empreinte d'impression ou d'illustration et en terminant par la dernière page qui comporte une telle empreinte.

Un des symboles suivants apparaîtra sur la dernière image de chaque microfiche, selon le cas: le symbole \rightarrow signifie "A SUIVRE", le symbole ∇ signifie "FIN".

Les cartes, planches, tableaux, etc., peuvent être filmés à des taux de réduction différents. Lorsque le document est trop grand pour être reproduit en un seul cliché, il est filmé à partir de l'angle supérieur gauche, de gauche à droite, et de haut en bas, en prenant le nombre d'images nécessaire. Les diagrammes suivants illustrent la méthode.

MICROCOPY RESOLUTION TEST CHART

(ANSI and ISO TEST CHART No. 2)



APPLIED IMAGE Inc

1653 East Main Street
Rochester, New York 14609 USA
(716) 482 - 0300 - Phone
(716) 288 - 5989 - Fax

3/25
97.31
30

GOLDEN, B.C.

In the Land of Sunshine and
Mountain Breezes. At the
Junction of the Canadian Pa-
cific and Kootenay Central
Railways.

The Gateway to the Fertile
Columbia Valley

PRIZE LIST

Golden District Second Annual Fair
September 17 and 18, 1912

The Ranchers, Farmers
and Other Residents

OF THE COLUMBIA VALLEY
WHO LOOK FOR THE MOST
SATISFACTORY SERVICE AND
THE BEST VALUE SHOULD
PATRONIZE

THE BIG STORE

H. G. PARSON, Limited, GOLDEN

Golden Agricultural Association

(Incorporated 1911)

OFFICERS FOR 1912:

President, William Shaw
Vice-President, N. M. Foulkes
Treasurer, C. A. Warren
Secretary, C. D'A. Lang

DIRECTORS:

Golden

John Anderson, F. P. Armstrong, F. H. Bacon, J. A. Buckham, D. Bowes, V. Chapman, H. M. Cooper, J. W. Conner, R. F. Forneri, W. R. Grubbe, A. C. Hamilton, Thomas King, R. Landells, H. C. Moore, G. B. McDermot, H. G. Parson, D. R. Rolston, E. N. Russell, E. J. Scovil, G. Sanborn, Dr. J. N. Taylor, Rev. E. G. Thatcher, W. J. Wright, W. Wenman.

Galena

D. McIntosh, John Watson, Ed. Watkins.

Brisco

W. P. Allsup, A Mitchell.

Sinclair

G. F. Gibson (Secretary-Treasurer, Columbia Valley Orchards, Ltd.)

Windermere District

H. E. Forster, M. P. P., G. F. Stalker.

OFFICIAL JUDGES:

Live Stock, W. N. Townsend Poultry, E. Pargiter
Fruit and Vegetable M. S. Middleton

270/1
971.31
9618

MAGIC BAKING POWDER
PURE
WHOLE SOME

HEALTHFUL BISCUIT. CAKE. ETC

DIRECTIONS.

THIS BAKING POWDER IS COMPOSED OF THE FOLLOWING INGREDIENTS AND NONE OTHER: PHOSPHATE, BI-CARBONATE OF SODA AND STARCH.

MANUFACTURED BY
E.W. GILL F.T.T.
TORONTO

CONTAINS

MAGIC BAKING POWDER
PURE
WHOLE SOME

MAKES THE WHITEST LIGHTEST

MAGIC BAKING POWDER

CONTAINS NO ALUM

Read the Label

Costs no more than the Alum Kinds

The only Baking Powder made in Canada that has all its ingredients plainly printed on the label.

For economy we recommend the one pound cans.

GOLDEN, B. C.

REASONS WHY GOLDEN MUST GROW

SITUATION—It is the distributing point for 150 miles of the COLUMBIA VALLEY.

RESOURCES—It is in the midst of 300 square miles of ARABLE LANDS open to homestead.

It is shipping more LUMBER than any town in the interior of B.C. The tributary TIMBER guarantees its doing so for all time.

Its MINERAL RESOURCES, as proved by the exhibit in the government buildings at Golden, are varied and extensive.

Railway transportation (now being extended) will place Golden in the ranks of the big SHIPPING DISTRICTS.

Within a ten mile radius of Golden there are easily developed WATER POWERS aggregating 30,000 h.p.

TRANSPORTATION—Golden has the CANADIAN PACIFIC, the KOOTENAY CENTRAL and the COLUMBIA RIVER LUMBER CO.'S LOGGING Railways as main feeders. In addition there are TRUNK ROADS south to Windermere and Cranbrook and north to Donald, running through a rich farming and fruit-raising country. The BANFF-WINDERMERE MOTOR ROAD will connect this system with ALBERTA.

TRAILS—Golden Mining Division has over 800 miles of PACK TRAILS extending as far north as Tete Jaune Cache and up the several tributaries to their sources. MINER, HUNTER or TOURIST can take horses to timber line in 50 different places.

CLIMATE—While the climate of Golden is particularly agreeable in SUMMER it possesses advantages unique in Canada as a WINTER RESORT. A real winter temperature without sudden changes, violent storms or periods of cloudy weather. The usual Winter day in Golden—zero in the morning, a clear bright sky with a slight thaw in the afternoon sun. It is to be the WINTER PLAYGROUND of the C. P. R. System now being established.

HOSPITALS—Three modern buildings, consisting of a General, a Maternity and an Isolation Ward. Each and all large, airy, well equipped and up-to-date in every respect. They stand in the midst of extensive grounds laid out with good park, lawn and flower beds.

SCHOOLS—Both High and Public Schools are equipped with First Class teachers. A handsome new building was opened by Earl Grey, the former Governor General of Canada, on his visit to Golden, and was named The Lady Grey School. The Play Grounds are large occupying a whole block.

SCENERY—The town nestles between the ROCKY and the SELKIRK MOUNTAINS, and is built at the confluence of the COLUMBIA and the KICKING HORSE RIVERS. There are numerous LAKES and FALLS in its vicinity, all of which tend to make its scenic situation almost unsurpassed.

Eat
B and K Rolled Oats

Manufactured by

The Brackman-Ker Milling Co'y.
Calgary, Alta.

Cereal Millers and Dealers in

Hay, Grain and Feed

Rolled Oats	Pot Barley
Oatmeal	Pearl Barley
Wheat Flakes	Split Peas
Rolled Wheat	Flax Seed
Whole Wheat Flour	Linseed Meal
Graham Flour	Feed Oats
Rye Flour	Wheat
Corn Flour	Barley
Cornmeal	Chick Food
Buckwheat Flour	(B.K. Special)
Wheatlets	Bran Shorts

Lowest quotations and samples sent on application.

"SWITZERLAND IN THE ROCKIES."

Edelweiss, the Swiss village which the Canadian Pacific Railway has located a half mile west of Golden, opens vast possibilities in home construction for the Rocky mountains. Six chalets have been built on the steep hillside and are occupied by a like number of Swiss guides and their families. These guides find employment with the numerous tourists who each summer visit the Canadian Pacific hotels both east and west of Golden. Hitherto the guides have stayed at the hotels in the summer and returned to Switzerland in the winter but henceforth their services will be available at all times of the year which will be very acceptable to the large number of mountain climbers and pleasure seekers who are finding the Canadian Rockies as pleasing during the winter months as in the warmer weather.

In addition to the six chalets on the mountain a number of farms have been laid out in the valley below. These will be occupied by Swiss farmers. Experiments have proven that the soil is especially adapted to the raising of small fruits and all kinds of vegetables which will find ready sale at the railway hotels.

The location of the village is exceptionally picturesque as well as very promising from an agricultural point of view. Nature made the valley broad, green, grand and endowed with almost illimitable potentialities. There are trout in the streams and game on the lower slopes of the mountains; peak after peak challenges the mountain climber and shady, quiet nooks along the river banks lure the less venturesome Nature lover; there is grandeur in the mountains and and beauty in the green trees, grassy meadows and the laughing sky overhead.

There is also a deep, rich, fertile, chocolate loam that gives bounteous returns for labor expended upon it; there are cold, clear streams which furnish an inexhaustible supply of cold, clear water; there is a salubrious climate—long hours of sunshine each day and but few cloudy days. All of which combine to make this locality unsurpassed to sojourn in for a short period or choose for a permanent home.

THE LARGEST ELECTRICALLY DRIVEN SAWMILL PLANT IN THE MOUNTAINS

From a little old fashioned sawmill cutting about 50,000 feet per day to one of the largest and finest equipped plants in Canada today, the growth of the Columbia River Lumber Company, Ltd. in the past six years, speaks much for the ability and progressiveness of the present management.

The mill buildings, warehouses, barns, boarding and sleeping houses, stores, offices, dwellings, etc., are nicely painted, well built and cleverly placed. The impression is quickly conveyed to the visitor that the man who planned all this had an ideal plant in view, knew how it should be built, and allowed no deviation from the mile-laid down for its construction.

The new electrically driven sawmill is equipped with two double cutting band mills and a 48 in Gang, two large double Edgers, Automatic Trimmer, Lath Mill, etc. Each machine is driven by separate motors rating from 5 to 250 h.p. The daily cut averages 300,000 feet of lumber and 40,000 lath in twenty hours run.

The rough lumber is neatly piled in the large, well arranged yard, which usually contains about 15,000,000 feet, and is thoroughly air dried.

D. R. ROLSTON

ALEX. J. MITCHELL

ROLSTON & MITCHELL

General Merchants

Golden, B. C.

Gents' Furnishings

Clothing

Groceries

Boots and Shoes

Hardware

Sporting Goods

We solicit your patronage. Our prices and quality
are right

Hunting, Survey and Mining
Parties Outfitted

before being further manufactured. When it is in proper shipping condition it is trucked into the Planing Mill which is equipped with nine modern fast feed machines, where the lumber is worked according to order and loaded, bright and clean, directly into cars for shipment. The company manufactures and ships about 40,000,000 feet per year most of which finds a ready market in the Prairie provinces. This year, however, the steady influx of settlers and the rapidly increasing prosperity of the Upper Columbia Valley has created a tremendous demand for lumber in that district and the river steamers have been kept busy all season hauling lumber and other building material up the river.

At present the company is concentrating its logging operations on the splendid timber limits a few miles west of Golden. Two large camps are operated the year round employing upwards of 250 woodsmen. The logs are hauled to the river on the new logging railway which is a standard gauge road about 12 miles in length. The railway equipment, all of which is of the latest design and efficiency, consists of three powerful Heisler geared locomotives, two Barnhart steam loaders, sixty Russell logging cars, flat cars, box cars, etc. This equipment will be materially increased in the near future. About 200,000 feet of logs are hauled and put into the river each day.

A subsidiary company, the Upper Columbia Transportation Co., operates two fine steamers on the Columbia river transporting passengers and freight between Golden and up river points.

The Golden Light, Power and Water Co., another affiliated concern, supplies electric light and power to the town of Golden.

The men at the head of affairs are Col. A. D. Davidson, president, A. D. McRae, vice-president, Jas. D. McCormack, secretary-treasurer, E. S. Sanders, general manager.

P. Burns & Co., Ltd.

Golden - - B. C.

Have always on hand a highly
selected assortment of fresh and
cured meats of first quality.

Shamrock Eggs

Shamrock Creamery Butter

Shamrock Lard

Special welcome and bargains during Fair week

SHOW AND SALE DAILY

RULES.

The price of membership ticket for the year 1912 is \$2.00

A membership ticket entitles the owner and members of his family to exhibit any one article in any division of any class free of charge, but for additional entries the usual non-membership fee will be charged.

Admission to exhibition building will be 25 cents for adults and 15 cents for children under twelve each time of entering.

Non-members may enter any article on paying entrance fee of 25 cents for each exhibit for which the prize competed for is \$2.50 or under, over that amount 50 cents entrance fee for each exhibit.

All entries for competition must be made to the secretary one clear day before the opening, and exhibits must be put in their proper places before 9 a. m. Tuesday, 17th by exhibitor or agent.

All entries for competition or otherwise must be left on exhibition until 5 o'clock p.m. on the second day of the fair.

Entries must be in the name of the bona fide owner or authorized agent. An agent for more than one exhibitor must pay the usual entrance fee for each party and enter under separate registered number.

Exhibits may be sent in the care of the Secretary, but all expenses of transportation, etc., must be paid by exhibitor.

Each exhibitor must attach a card naming class and number of each exhibit and get from the Secretary a registered number as a substitute for his name and put this registered number instead of his name on his entry card.

Exhibitors must give the necessary personal attention to their exhibits, and at the close of show take charge of same or make suitable arrangements to have this done.

Directors will take reasonable precautions to insure safety of exhibits, but in no wise will be held responsible for loss or injury.

All articles of a collection must be the produce of the one exhibitor only.

Articles exhibited in a collection can not compete for individual prizes.

No person will be allowed to enter for competition more than one specimen in any one class of a division unless the additional article be a distinct named variety or pattern from the first. This rule does not apply to animals, but to all kinds of grain, vegetable produce, fruit, manufactured articles, etc., of which each additional specimen would necessarily be precisely similar to the first.

In order that one prize be awarded there shall be two or more entries; and in order that two prizes be awarded there shall be three or more entries.

Any exhibitor lodging a protest must do so in writing to the secretary and put up a deposit of \$1 for each protest, which will be forfeited if protest is not sustained.

Judges will be appointed by the directors. No person shall act as judge in any class where he is an exhibitor.

Judges may use their discretion in awarding a prize where article does not warrant one.

If there are not enough funds on hand to pay prizes in full they will be paid pro rata.

No prizes will be paid out until all accounts have been passed by the Board.

Exhibition will be open at 2 o'clock p.m. September 17, 1912.

THE HOUSE OF SATISFACTION



Columbia Hotel

One Block from C.P.R. Station

Golden - B. C.

Commodious Rooms

Excellent Table

The Home of the Commercial
Man and Tourist

Sample Rooms

Rates: \$2.50 a Day and Upwards

In the Heart of Everything Worth Seeing

R. J. WILLIAMS, MANAGER

PRIZE LIST

All live stock must be the bona fide property of residents of the Columbia Valley.

Class 1.—HORSES

First Prize, \$10.00; Second Prize \$5.00.

Sub-Div. No.

1. Heavy Draft Team and turn-out.
 2. Team of Driving Horses in harness.
 3. General Purpose Team under 1300 lbs.
First Prize, \$6.00; Second Prize, \$3.00
 4. Percheron Stallion, any age.
 5. Clyde Stallion, any age.
 6. Hackney Stallion, any age.
 7. Racing Stallion, any age.
 8. Mare and Foal.
 9. Three-Year-Old bred in Columbia Valley.
 10. Two-Year-Old bred in Columbia Valley.
First Prize, \$4.00; Second Prize, \$2.00
 11. One-Year-Old bred in Columbia Valley.
 12. Saddle Pony, under 15 hands.
 300. Best Brood Mare, any breed. Special cash prize, \$10, donated by Wm. Shaw
 301. Best Stallion. Special prize donated by Canadian Pacific Railway Co., \$25 00
- A Bronze Medal, donated by The Canadian Bank of Commerce, Golden, B.C., for the best Draft Horse on exhibition, any breed, age or sex, raised in the Columbia Valley.

Class 2.—CATTLE

First Prize, \$5.00; Second Prize, \$3.00; except No. 18, First Prize \$4.00
Second Prize, \$2.00

13. Best Milch Cow.
14. Best Jersey Cow.
15. Best Bull, any breed.
16. Best One-Year-Old Bull
17. Best Two-Year-Old Bull.
18. Best Heifer Calf (under 12 months)
19. Best One-Year-Old Heifer.
20. Best Two-Year-Old Heifer.
310. Best Three Calves shown together, any breed, bred by the exhibitor. Cash prize, \$25.00, donated by E.H.H. Carlile, Galena
311. Best Bull, any breed. Special prize donated by Canadian Pacific Railway Co., \$25.00

Class 3.—SHEEP

First Prize, \$5.00; Second Prize, \$3.00

21. Best Pen of two, any breed.
First Prize, \$4.00; Second Prize, \$2.00
22. Best Lamb (under 12 months) any breed or sex.

Class 4.—SWINE

First Prize, \$5.00; Second Prize, \$3.00

23. Best Boar Hog, any breed or age.
24. Breeding Sow.
320. Pen of three or more young pigs under 6 months, any breed, bred by exhibitor. Cash prize, \$25.00, donated by E. H. H. Carlile

THE NEWSPAPER OF NORTHEAST KOOTENAY

THE GOLDEN STAR

Published at Golden, B.C., Every Saturday
\$2 a Year. Excellent Advertising Medium

This Booklet Demonstrates Our Job Printing Efficiency. We
Do All Classes of Work in This Department

VERNON CHAPMAN - Editor and Manager

Livery and Sale Stables

All kinds of heavy teaming and express work promptly
attended to

Cockshutt and Frost & Wood Farm Machinery, Adams
Team Sleighs
Munroe & McIntosh Cutters, Buggies
and Democrats
Harness, Robes, Horse Blankets, Whips, Etc.

A. C. HAMILTON
Golden, B.C.

Class 5.—POULTRY

First Prize, \$2.00; Second Prize, \$1.00

25. Any Breed, cock and hen.
26. Wyandotte, Buff, cock and hen.
27. Wyandotte, White, cock and hen.
28. Leghorn, White, cock and hen.
29. Leghorn, Brown, cock and hen.
30. Plymouth Rock, White, cock and hen.
31. Plymouth Rock, Barred, cock and hen.
32. Buff Orpington, cock and hen.
33. Best Pen of four, any breed.
34. Dressed Poultry, pair ready for table.
330. Best pen of any utility fowl, any breed, 1 cock and 9 hens. Special prize donated by Canadian Pacific Railway Co., \$25.00

Class 6.—TURKEYS

35. Bronze, single bird
36. Best Pair, any variety

Class 7.—DUCKS AND GEESE

37. Best Pair, any variety
38. Dressed Ducks, Pair ready for table
- 38a. Best Pair Geese, any variety

Class 8.—DAIRY PRODUCE

First Prize, \$2.00; Second Prize, \$1.00

39. Butter, best 5 lbs., rolls or prints
40. Butter, crock of not less than 10 lbs.
41. Heaviest 1 dozen new laid hen's eggs
42. Cheese, not less than 10 lbs.

Class 9.—ROOTS AND VEGETABLES

First Prize, \$2.00; Second Prize, \$1.00

All roots and vegetables must be grown by the exhibitor, and be the product of the Columbia Valley.

43. Potatoes, best three distinct varieties correctly named, 15 lbs. of each
44. Potatoes, best 20 lbs., any variety
45. Sweede Turnips, best six
46. Turnips, Purple-top Aberdeens, best six
47. Mangel Wurtzels, best six
48. Turnips, any variety, best six
49. Sugar Beets, best five
50. Beets, table, best six
51. Squash, for table use, best two
52. Squash, for cattle, best one
53. Citron, best two
54. Onions, from seed, best dozen
55. Onions, from sets, best dozen
56. Tomatoes, green, best six
57. Tomatoes, ripe, best six
58. Carrots, any variety, best six
59. Cabbage, any variety, best four
60. Cabbage, largest on exhibit
61. Parsnips, any variety, best six
62. Cauliflower, best two heads

Rennie's Seeds

"THE FINEST IN THE LAND"

WILLIAM RENNIE CO., LTD.
TORONTO WINNIPEG MONTREAL VANCOUVER

Our Fall Catalogue will be ready about September 1st. If you anticipate planting any Bulbs or Seeds in the fall, send us your name and address and we will reserve a copy for you.

OUR CATALOGUES ARE FREE

VANCOUVER BRANCH: 1138 HOMER ST.

The Western Tent and Mattress Company
MANUFACTURERS AND JOBBERS
CALGARY, ALTA.

Tents, Awnings, Tarpaulins, Camp Beds, Camp Furniture, Blankets and all kinds of Canvas Goods.

133 Tenth Avenue East

P. O. Box 57

Ellwood American Field Fence

A Good Fence for Gardens, Small Ranches and Large Ranches

Sole Agent for Golden:

C. A. WARREN

63. Peas, one quart, shelled garden
64. Beans, half gallon, green
65. Corn, Sweet, six ears
66. Celery, six roots
67. Radishes, six bunches of 10 each
68. Cucumbers, two, any variety
69. Musk Melons, best two
70. Lettuce, any variety, six heads
71. Parsley, three bunches
72. Garden Herbs, best collection
73. Collection of Garden Vegetables, suitable for table use. Donated by the Imperial Bank, Golden, B.C., cash \$10.00
340. Collection of Winter Keeping Vegetables (10 each, Beets, Potatoes, Parsnips, Onions and Carrots) Statement of how much land is under cultivation for each of these roots must be signed by the exhibitor and accompany entry form and will be a feature in determining the prizes, which are for the purpose of inducing farmers to raise larger quantities of these vegetables. Special Prize donated by R. J. Williams. First, Cash, \$15.00; Second, Cash, \$10.00.

Class 10.—GRAIN AND HAY

First Prize, \$2.00; Second Prize, \$1.00

All entries must be grown by the exhibitor, and be the product of the Columbia Valley.

74. Barley, best collection in sheaf of six
75. Rye, best collection in sheaf of six
76. Hay, best sample in bundles or pressed, not less than 10 lbs. in each sub-division:
 - (a) Timothy
 - (b) Clover
 - (c) Alfalfa
 - (d) Oat
77. Wheat, best collection in sheaf of six
78. Oats, best collection in sheaf of six
79. Sheaf of Timothy
80. Sheaf of Clover
81. Sheaf of Alfalfa

A Bronze Medal will be donated by the Canadian Bank of Commerce, Golden, B.C., for best sample of grain, 3 varieties, 10 lbs. of each

Class 11.—FRUIT

First Prize, \$2.00; Second Prize, \$1.00

All fruit must be grown by the exhibitor and be the product of the Columbia Valley.

82. Apples, Yellow Transparent, five to plate
83. Apples, Wealthy, five to plate
84. Apples, Duchess of Oldenburg, five to plate
85. Apples, any variety not included in previous classes, five to plate
86. Apples, best collection of three varieties other than those included in first three classes
87. Crab Apples, Hyslop, plate of ten
88. Crab Apples, Whitney, plate of ten
89. Crab Apples, Transcendant, plate of ten

The Canadian Bank of Commerce

SIR EDMUND WALKER, C.V.O., L.L.D., D.C.L., President
ALEXANDER LAIRD, General Manager JOHN AIRD, Assistant General Manager

Capital, \$15,000,000 **Rest, \$12,500,000**

FARMERS' BUSINESS

The Canadian Bank of Commerce extends to Farmers every facility for the transaction of their banking business including the discount and collection of sales notes. Blank sales notes are supplied free of charge on application.

BANKING BY MAIL

Accounts may be opened at every branch of The Canadian Bank of Commerce to be created by mail, and will receive the same careful attention as is given to all other departments of the Bank's business. Money may be deposited or withdrawn in this way as satisfactorily as by a personal visit to the bank.

GOLDEN, B. C. BRANCH

N. M. FOULKES - - - - **Manager**

Upper Columbia Valley Lands

Including Windermere District

Notary Public, Commissioner, etc.

Exclusive Sale of the Choicest Lands in the Valley, including
Water Rights with lands

Improved Farms of all sizes, Unimproved Lands in large and
small tracts and Lake Frontage

Call or write for particulars

E. J. SCOVIL

Financial Agent - - Golden, B.C.
Formerly District Land Commissioner

- 90. Crab Apples, any other variety, plate of ten
Small Fruit
- 91. Plate of Red Currants
- 92. Plate of Black Currants
- 93. Plate of White Currants
- 94. Plate of Raspberries, white or red
- 350. Best Collection of Fruit grown in the valley by the exhibitor Special prize by Canadian Pacific Railway Co., \$25 00

Class 12.—MINERALS

First Prize, \$2.00; Second Prize, \$1.00

All mineral specimens, furs, mounted heads and birds must be the property of the exhibitor, and be the produce of the Columbia Valley or Mountain ranges tributary thereto.

- 95. Silver Ore
- 96. Lead Ore
- 97. Copper Ore
- 98. Gold Ore
- 99. Any other Ore

Class 13.—FURS

First Prize, \$2 00; Second Prize, \$1.00

- 100. Bear Skin, raw or cured
- 101. Mink Skins, pair raw or cured
- 102. Marten Skins, pair
- 103. Muskrat Skins, pair
- 104. Coyote Skin
- 105. Wolf Skin
- 106. Lynx Skin

Class 14 —MOUNTED HEADS

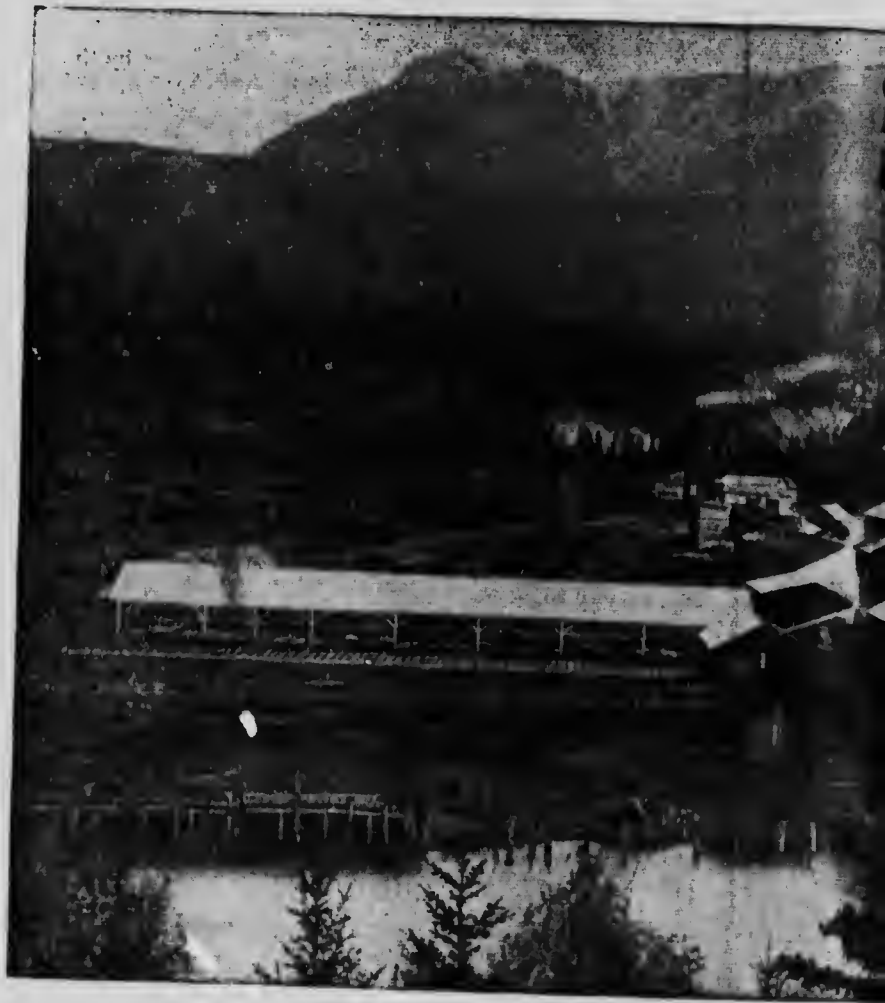
First Prize, \$2.00; Second Prize, \$1.00, except Sheep, First Prize, \$3.00; Second Prize, \$2.00

- 107. Sheep
- 108. Goat
- 109. Deer, any variety
- 110. Coyote
- 111. Wolf
- 112. Moose
- 113. Cariboo
- 113a. Collection Mounted Birds, special cash prize, \$5.00 by W. Wenman, Jr.

Class 15.—FLOWERS

First Prize, \$2 00; Second Prize, \$1.00

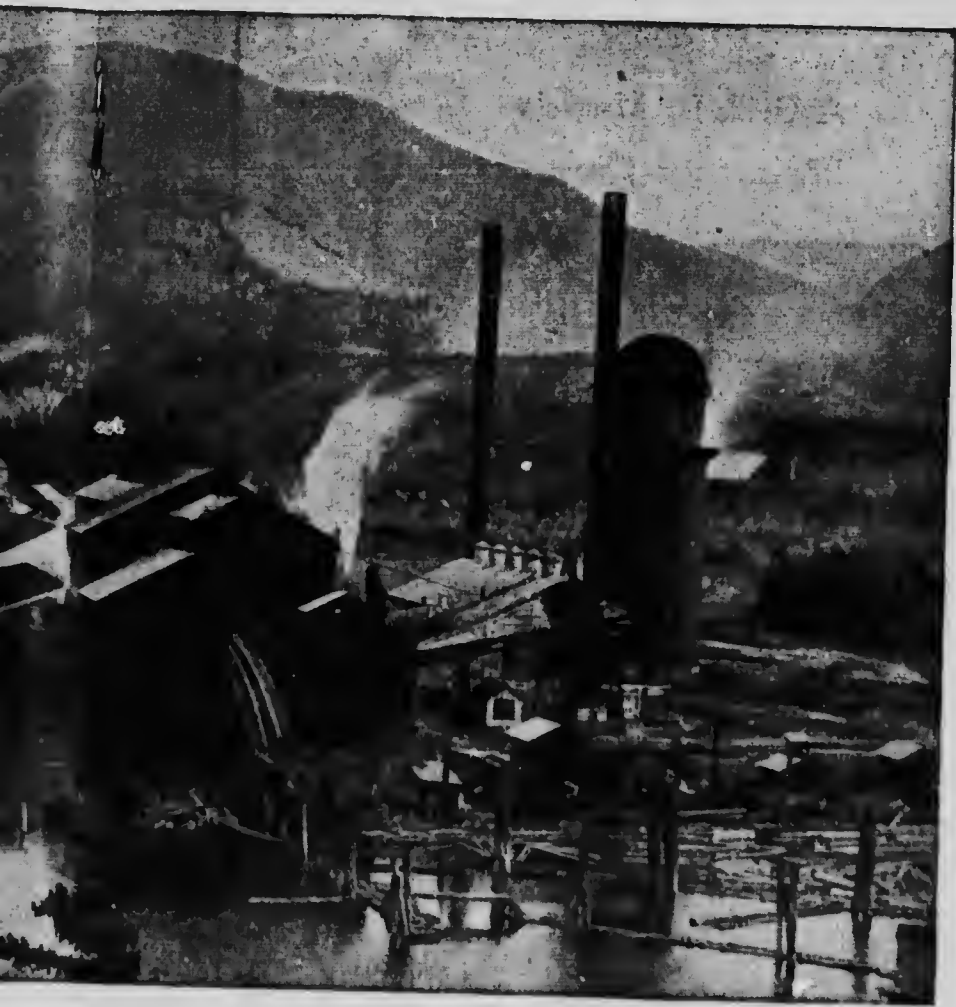
- 114. Best collection of Potted Plants
- 115. Best collection of Cut Flowers
First Prize, \$1.00; Second Prize, 50c
- 116. Best Collection of Sweet Peas
- 117. Best Collection of Asters
- 118. Best Collection of Pansies
- 119. Best Collection of Dahlias
- 120. Best Collection of Petunias
- 121. Best Collection of Fuchias
- 122. Best Collection of Geraniums
- 123. Best Collection of Roses



MODERN SA

Columbia River Lumb

The Largest Electrically Driven S



IN SAWMILL OF

umber Company, Limited

iven Sawmill Plant in the Mountains

The Selkirk Mountains

A Guide for Mountain
Pilgrims and Climbers

Information by
A. O. Wheeler, F.R.G.S., A.C.C., A.C., A.A.C.

Published by
STOVEL COMPANY
Winnipeg, Man.

This is a most comprehensive handbook and is full of interesting reading matter

- 124. Best Plant of any kind in bloom
- 125. Best Bouquet for table decoration

Class 16 — PRESERVED FRUITS

First Prize, \$1.00; Second Prize, 75c.

- 126. Strawberries
- 127. Loganberries
- 128. Raspberries
- 129. Blackberries
- 130. Gooseberries
- 131. Cherries
- 132. Plums
- 133. Pears
- 134. Quinces
- 135. Collection of Jellies
- 136. Catsup
- 137. Pickles
- 138. Wines

Special prize will be awarded for best collection of preserved Wild Fruits.
(Special prize will be awarded for Cultivated Fruits, Sec. 231)

Class 17.—CANNED FRUITS

First Prize, \$1.00; Second Prize, 75c.

- 139. Strawberries
- 140. Raspberries
- 141. Blackberries
- 142. Apples
- 143. Pears
- 144. Plums
- 145. Cherries

Class 18.—ART

First Prize, \$1.50; Second Prize, \$1 00

Rule requiring number of entries may be waived at the discretion of the Judge in Classes 18, 19 and 21.

- 146. Oil Painting (landscape)
- 147. Oil Painting (figure)
- 148. Oil Painting (flowers or fruit)
- 149. Water Color Painting (landscape)
- 150. Water Color Painting (figure)
- 151. Water Color Painting (flowers or fruit)

NOTE: If any of these are original scenes, etc., of the Valley, prize will be doubled, at discretion of Judge.

- 152. Pastel (landscape)
- 153. Pastel (figure or fruit)
- 154. Pen and Ink Sketch
- 155. Hand Painted China (conventional)
- 156. Hand Painted China (flower)
- 157. Photographs (colored)
- 158. Painting on Silk, Satin or Velvet
- 159. Pyrography (colored)
- 160. Pyrography (uncolored)
- 161. Pierced or Beaten Brass or Copper
- 162. Carved Work
- 163. Stencilling (on any material) donated by The Sherwin-Williams Co.
1st Prize, Stencil Outfit A, value \$2.00
2nd Prize, Stencil Outfit B, value \$1.50

VAUDEVILLE

Selkirk Hall

Wed., September 18, 1912

Character Songs, Comic Plays, Instrumental Solos

Euphonium Solo

by G. E. Robertson, late of H. M. S. Unicorn
Double and Triple Tonguing

The Goblin Man

Song and Dance Limelight and Chorus

The Runaway Mounted Foot

or, Bravery in the Sentry Box

by H. Connell-Moore, late of Portsmouth Empire
Theatre, England

Galaxy of Talent

Fine Music, Laughter and Fun, followed by an

ALL NIGHT DANCE

Class 19.—WOMEN'S AND CHILDREN'S WORK

First Prize, \$1.00; Second Prize, 75c., except Specials

164. Embroidery, White
165. Embroidery, Colored
166. Embroidery, Punched Work
167. Embroidery, Darned Work
168. Embroidery, Oriental Drawn Work
169. Embroidery, Cross Stitch
170. Embroidery, Hardanger
171. Knitting, Wool, plain
172. Knitting, Wool, Fancy
173. Knitting, Cotton
174. Crocheting, Wool
175. Crocheting, Cotton
176. Counterpane, crocheted or knitted
177. Sofa Cushion, Colored Silks
178. Sofa Cushion, Stencilled
179. Sofa Cushion, Paint or Pyrography
180. Tea Cosy
181. Pin Cushion
182. 5 O'Clock Tea Cloth
183. Lunch Cloth
184. Towels, Embroidered
185. Towels, Guest
186. Dresser or Side Board Scarf
187. Library Table Mats
188. Irish Crochet Work
189. Vest, Canvas or Crochet Work
190. Baby's Dress
191. Baby's Bonnet and Bootees
192. Home Made Floor Rug
193. Bed Room Slippers (Gents)
194. Bed Room Slippers (Ladies)
195. Shoe Bag
196. Aprons (1 fancy, 1 work)
197. Set of Underwear
198. Set of Doilies
199. Dressed Doll, by girl under 14
200. Doll's Bed, Furnished (girl under 14)
201. Drawing (subject, Dipper and Pail on Table)
202. Drawing (Original Conventional Design Suitable for Wall Paper)
203. Hand Printing (Poster Advertising Golden, B.C.)
204. Collection of Pressed Plants of the Valley, Special Prizes by R. Landells.
205. Enamelling or Painting (wicker table or chair done with Stephen's paints or enamels) Special Prizes donated by G. F. Stephen's & Co., First Prize, \$3 00 worth, Second Prize, \$2 00 worth of their manufactured goods.
206. Penmanship (subject, Letter, accepting invitation for Christmas Holidays, and Addressed Envelope) Special Prize, Handsome Gold Mounted Fountain Pen donated by W. J. Gage & Co., Toronto. (Open to High School pupils.)
207. Collection of Postcards (mounted)

Donated by Mrs. H. E. Forster, Firlands, \$10.00, as follows:

Important Notice



The Golden Agricultural Association is desirous that every farmer in the district keep before him the fact of the International Dry-Farmed Products Exposition to be held at Lethbridge, October 21-26 next, and endeavor to capture as many prizes as possible for the Golden district, especially the Rumely Traction Engine, valued at \$2,500, for the best bushel of hard wheat, and the Stewart Sheaf Loader, valued at \$500, for the best sheaf of hard wheat grown in 1912.



For further particulars in regard to the Dry-Farming Congress, its big Exposition and the magnificent prizes write to the

Executive Secretary-Treasurer,

International Dry-Farming Congress,

Lethbridge, Alberta

360. Penmanship (subject, Capitals and Small Letters of the Alphabet) open to 1st, 2nd and 3rd grade pupils of the Public School. Three first prizes of \$1.00 and three second prizes of 75 cts.

361. Collection of White Embroidery, \$5.00
Class 20.—BAKING, ETC.
Special

- 208. Two Loaves of Bread Baked in one pan
- 209. Loaf of Bread (crust entire)
- 210. Brown Bread (Prize, 5 lbs. Coffee donated by Chase & Sanborn)
- 211. Pan of Yeast Buns
- 212. Pan of Biscuits
- 213. Layer Cake
- 214. Fruit Cake
- 215. Cookies
- 216. Pies (2 assorted)
- 217. Luncheon, consisting of 1 Roast Fowl, 1 Loaf Bread, 1 Salad, 1 Cake
Competition for young housekeepers, brides of 1912) Prize, by H. N. Merriam, Cash, \$10.00 Second prize by Mrs. Taylor. Cash, \$5.00

Donated by Mrs. F. P. Armstrong, \$5.00, First Prizes, \$1.50; Second Prizes \$1.00, open to girls of 14 years and under

218. Layer Cake

219. Home Made Candy

Class 21.—SEED MERCHANTS' PRIZES

Prizes in seeds to be chosen from their 1912 or 1913 catalogues

- 220. Collection of Vegetables and Flowers grown from Sutton's seeds. Prizes by Sutton & Co., The King's seedsmen, Reading, Eng., per A. J. Woodward, Agent, Vancouver, B.C. First Prize \$3.00; Second Prize, \$2.00
- 221. Collection of Flowers or Vegetables grown from their seeds by Peter Henderson & Co., New York, U.S., \$2.00
- 222. Collection of Vegetables grown from their seeds by the Steele Briggs Seed Co., First Prize, \$5.00; Second Prize, \$3.00
- 223. Collection of Vegetables from their seeds, by A. E. McKenzie Co. Ltd., \$5.00 (cash)
- 224. Display of Vegetables grown from Ferry's seeds, by D. M. Ferry & Co., \$3.00
- 225. Display of Cut Flowers grown from Ferry's seeds, by D. M. Ferry & Co., \$2.00
- 226. Collection of Vegetables and Field Roots grown from Rennie's seeds \$5.00 worth of Wm. Rennie Co.'s seeds.
- 227. Best collection of potted plants and cut flowers. Prize by Canadian Consolidated Rubber Co., Ltd. 50 feet corrugated rubber hose, nozzle and couplers complete, value \$13.00
- 228. Bread baked with Robin Hood flour. First, 2 98-lb. sacks Robin Hood flour, Second, 1 98-lb. sack Robin Hood flour
- 229. Bread baked with Purity flour. First 2 98-lb. sacks Purity flour second, 1 98-lb. sack Purity flour.
- 230. Class 19. Dressing Table, hand made and decorated. Prize, Ladies' silver watch, by W. Entwisle, Jeweler, Golden
- 231. Class 16. Collection preserved cultivated fruits, \$5.00 worth of goods at the C. R. L. Co.'s store, J. T. Wood, Mgr.

Special prize for the farmer taking the most prizes at the Fair. 1 year's subscription to the Agricultural Journal of British Columbia.

Big Two Days Sports

At the Golden Park

September 17 and 18

Under the auspices of the

**Athletic Associations
of Golden**

**Baseball, Football, Basketball,
Foot Races, Jumping, Etc.**

Prizes and Awards



Columbia River Route

One hundred miles of the most picturesque river and
mountain scenery in British Columbia

STEAMERS INVERMERE AND SELKIRK
make regular trips from Golden to Windermere,
stopping at Wilmer, Athalmer and Invermere

Alexander Blakley - Captain and Manager

RUSSELL HOUSE

WILLIAM L. PERLSTROM, Proprietor

Home of the Lumberman
the Miner and the Rancher

Best \$1 a Day House in the Mountains

First Class Accommodation

Good Table

Best Liquors and Cigars at the Bar

Golden's Popular Hotelry

The Lady Grey School
Golden, B. C.



Earl Grey, Former Governor General of Canada, Opening the
New Public and High School at Golden,
August 20, 1909

God Save the King

THE KOOTENAY HOTEL

Large and Commodious Dining Room
Prompt and Courteous Service
Best Brands of Wines, Liquors and Cigars
at the Bar

GOLDEN, B. C.

CREO-SOL

The best disinfectant for **Horses, Sheep, Cattle, Poultry**
and household purposes.

ELECTROPODES

The guaranteed cure for rheumatism.

The above goods can be procured at
J. A. BUCKHAM DRUG STORE, Golden, B. C.

J.A. TEPOORTEN & CO., Wholesale Druggists, Vancouver



The General Hospital and the Women's Hospital, Golden, B.C.



Log Dump on the Columbia River near Golden, B. C.

Imperial Bank of Canada

Established 1875

CAPITA (Paid up)	- - - -	\$6,425,000
RESERVE FUND	- - - -	6,425,000

D. R. Wilkie, President
Hon. Robert Jaffray, Vice-President

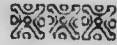
A General Banking Business Transacted

SAVINGS BANK DEPARTMENT—Deposits of \$1.00 and upwards received and interest compounded at 3 per cent. per annum on 30th of April and 31st of October each year.

Deposits and withdrawals can be arranged by mail and out-of-town customers receive every attention.

W. R. GRUBBE, Manager Golden Branch

REAL ESTATE IS THE BASIS OF WEALTH



I have listed with me some of the very best

Columbia Valley Lands

Suitable for mixed farming, vegetables, hay or fruit. They are in close touch with local prairie markets. Automobile, boat and train service through or near all these properties. Scenery and climate unexcelled.



C. D'A. LANG, General Commission Agent **Golden, B. C.**



One of the Swiss Villas at Golden, B.C., Erected by C.P.R. for Swiss Guides

If You Contemplate Building

Get Estimates from

Golden Sash and Door Factory

JAMES HENDERSON, Proprietor

The buildings have been completely overhauled
this year, new additions made and new machinery
installed.

Store, church and dwelling fixtures kept in
stock or made to order promptly.

Concrete Work a Specialty

The Queen's Hotel

Golden, B. C.



Keeping abreast of the times and also to enable it to handle the increased business THE QUEEN'S HOTEL has just completed a new addition which is furnished first class in every respect with running hot and cold water in every room. Also new lavatories, etc.



For comfort THE QUEEN'S HOTEL is surpassed by none and equalled by few.

Calgary Brewing and Malting Co., Ltd.



Ales, Porter and Lager Beer

“Buffalo” Brand Aerated Waters

Best Anywhere

AGENTS:

Columbia Wine & Spirit Co., Limited

Golden, B. C.

WHEN IN GOLDEN
CALL AT
BUCKHAM'S
FOR GOOD GOODS

Drugs—Drug Sundries—Jewelry
Enamelware—Fine Stationery
Fancy Goods—Cut Glass
Eastman Cameras
Books and Magazines
Photographic Supplies
Pipes and Tobaccos
Peterborough Canoes

Agent:
FORD MOTOR CO.
for Columbia District

J. A. Buckham
DRUGGIST AND STATIONER



"Switzerland in the Rockies"—Some of the Swiss Chalets at Golden, B. C.

