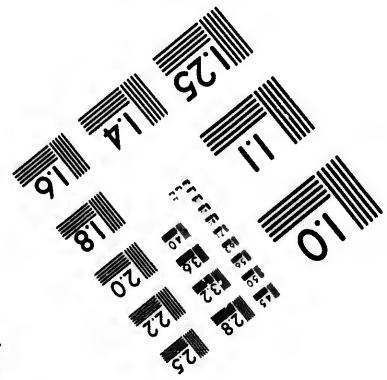
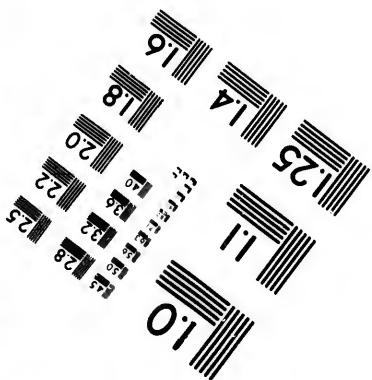
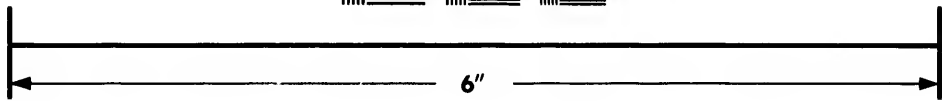
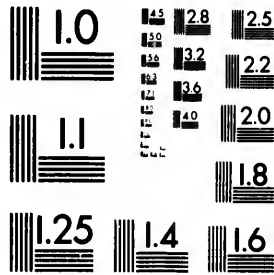


**IMAGE EVALUATION
TEST TARGET (MT-3)**



**Photographic
Sciences
Corporation**

23 WEST MAIN STREET
WEBSTER, N.Y. 14580
(716) 872-4503

15
18
20
22
25

**CIHM/ICMH
Microfiche
Series.**

**CIHM/ICMH
Collection de
microfiches.**



Canadian Institute for Historical Microreproductions / Institut canadien de microreproductions historiques

10

© 1981

The copy filmed here has been reproduced thanks to the generosity of:

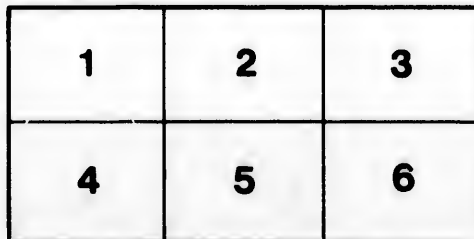
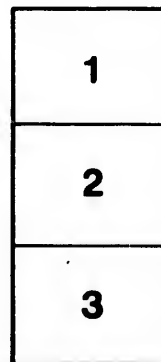
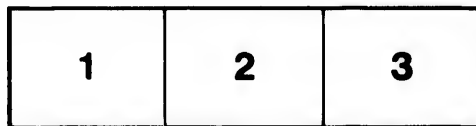
Library Division
Provincial Archives of British Columbia

The images appearing here are the best quality possible considering the condition and legibility of the original copy and in keeping with the filming contract specifications.

Original copies in printed paper covers are filmed beginning with the front cover and ending on the last page with a printed or illustrated impression, or the back cover when appropriate. All other original copies are filmed beginning on the first page with a printed or illustrated impression, and ending on the last page with a printed or illustrated impression.

The last recorded frame on each microfiche shall contain the symbol \rightarrow (meaning "CONTINUED"), or the symbol ∇ (meaning "END"), whichever applies.

Maps, plates, charts, etc., may be filmed at different reduction ratios. Those too large to be entirely included in one exposure are filmed beginning in the upper left hand corner, left to right and top to bottom, as many frames as required. The following diagrams illustrate the method:



L'exemplaire filmé fut reproduit grâce à la générosité de:

Library Division
Provincial Archives of British Columbia

Les images suivantes ont été reproduites avec le plus grand soin, compte tenu de la condition et de la netteté de l'exemplaire filmé, et en conformité avec les conditions du contrat de filmage.

Les exemplaires originaux dont la couverture en papier est imprimée sont filmés en commençant par le premier plat et en terminant soit par la dernière page qui comporte une empreinte d'impression ou d'illustration, soit par le second plat, selon le cas. Tous les autres exemplaires originaux sont filmés en commençant par la première page qui comporte une empreinte d'impression ou d'illustration et en terminant par la dernière page qui comporte une telle empreinte.

Un des symboles suivants apparaîtra sur la dernière image de chaque microfiche, selon le cas: le symbole \rightarrow signifie "A SUIVRE", le symbole ∇ signifie "FIN".

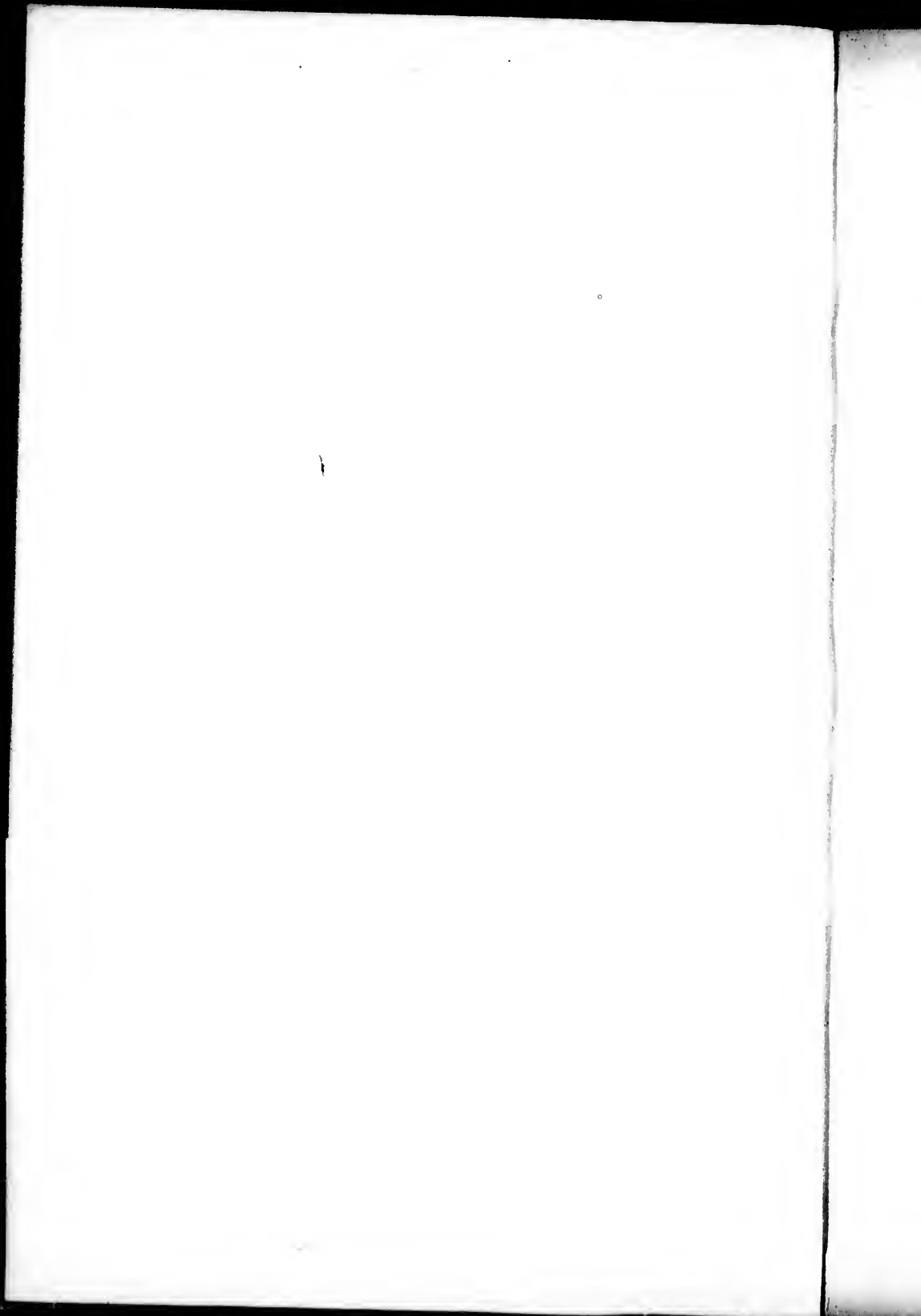
Les cartes, planches, tableaux, etc., peuvent être filmés à des taux de réduction différents. Lorsque le document est trop grand pour être reproduit en un seul cliché, il est filmé à partir de l'angle supérieur gauche, de gauche à droite, et de haut en bas, en prenant le nombre d'images nécessaire. Les diagrammes suivants illustrent la méthode.

ails
du
lifier
ne
age

rata
o

elure,
à

32X



ON THE
PHYSICAL FEATURES
OF THE
CENTRAL PART OF BRITISH NORTH AMERICA,
AND ON ITS
CAPABILITIES FOR SETTLEMENT.

BY
JAMES HECTOR, M.D., F.G.S., &c.

(From the Edinburgh New Philosophical Journal. New Series, for October 1861.)

EDINBURGH:
PRINTED BY NEILL AND COMPANY.

MDCCCLXI.

70
972
H4510

Physical Features of the Central Part of British North America, with Special Reference to its Botanical Physiognomy. By JAMES HECTOR, M.D., F.G.S., &c.*

The following paper is intended as a sketch of the botanical results of a Government expedition which was sent out in the spring of 1857 to explore the British territories lying in the neighbourhood of the northern boundary line of the United States, and stretching westward from Lake Superior across the Rocky Mountains. The expedition was placed under the command of Captain Palliser, who had previously travelled among the Indians in the district of the Upper Missouri and Yellowstone Rivers. His party consisted of Lieutenant, now Captain Blackiston, R.A., who had charge of the magnetical observations; Mr Sullivan, as secretary and assistant-astronomer to Captain Palliser; M. Bourgeau, a botanical collector whose name must be familiar to the members of this Society who have had occasion to consult the Herbarium; and the writer of this paper, who filled the post of surgeon and naturalist. The expedition was in the field for three years, and in that time examined and mapped a region embracing 33° of longitude, and in some places 5° of latitude.

Physical Characters of the Area explored.—Commencing at Lake Superior, the route of the expedition for the first 600 miles to Lake Winnipeg crossed over a spur which diverges to the south-west from an axis of crystalline rocks that runs from Canada to the Arctic Ocean in a north-west direction, and known as the "Intermediate Primitive Belt" of Richardson, or the "Laurentian Axis" of Logan. This belt of rocky country nowhere acquires a mountainous character, but is throughout extremely rugged and traversed by innumerable watercourses, and by long narrow lakes. The greatest altitude passed over in this portion of the journey was 1000 feet above Lake Superior, or 1600 feet above the sea-level. The inequalities of surface, and the diversity in the nature and amount of soil, has given a greater degree of complexity to the flora of this district than we might expect from its other physical conditions. The winter experienced in this region is severe, but steady. From the commence-

* Read before the Botanical Society of Edinburgh, 13th June 1861.

ment of November till May the whole country is ice-bound, so that the vegetation is perfectly dormant. The spring is very lingering, owing to the great extent of surface occupied by water, and the neighbourhood of the large lakes on the one hand, and of Hudson Bay on the other; the slow melting of the ice which accumulates on these sheets of water keeping the temperature depressed till far on in the season. Thus, in crossing Lake Superior, on the 9th of June, the expedition encountered much cold weather, and got entangled in the ice-floes that were, even so late in the season, drifting about the lake. The summer temperature is high, and, for the same reason that renders the spring late, the autumn is prolonged beyond its normal extent, the influence of the large internal masses of water not having the effect of producing an equalised climate like that of a sea-coast, but merely prolonging the force exercised by the half-yearly extremes of heat and cold.

To the west of the Laurentian Axis commences the region of plains that extends to the eastern base of the Rocky Mountains, and north and south throughout the whole central district of the North American continent. In the neighbourhood of Lake Winnipeg the primitive rocks are overlaid by nearly horizontal strata of Silurian and Devonian age, consisting of limestones sometimes containing magnesia to such an extent that the soil derived from their decomposition must be of inferior quality. Excepting along the margins of the group of lakes that lie close to the axis, outcrops of these limestones are, however, rarely met with, the floor of the plateau being almost everywhere concealed by superficial deposits, consisting of sands, gravels, and marls, the bulk of which have been derived by denudation from the cretaceous strata that at one time must have overlaid the area now occupied by the chain of lakes that extends from Lake Winnipeg to Great Bear Lake. A succession of steps, composed of these superficial deposits, and covered with a great profusion of erratic blocks, raises the level as we proceed westward, until, at an altitude of 1600 to 2000 feet, the finely assorted and well-mixed soils of the drift deposits cease, and the surface of the plain is occupied by strata of the age of the chalk, but formed of plastic and

sandy clays, much impregnated with sulphates, and yielding little or no soil that can support vegetation. In some localities sandstones prevail, which disintegrate with facility, and give rise to immense wastes of blown sand, that are continually, though slowly, travelling before the prevailing winds.

The whole prairie-slope of the continent is divided into two regions by a low watershed, which traverses it from east to west, nearly following the political boundary, which is the 49th parallel of latitude, and throwing off the drainage south to the Gulf of Mexico, and north to the Arctic Ocean and Hudson Bay. This watershed is very indistinctly marked, and has been formed entirely by denudation of the soft strata, being quite unconnected with any disturbance of the rocky framework of the basin. The prairies are traversed by several large rivers, but, excepting the sudden carrying off of the surface water when the snows melt in spring, these rivers can hardly be said to drain the country through which they flow, as their waters are derived throughout the greater part of the year from the Rocky Mountains; and the excess of evaporation over the rain-fall is shown by the drying up in summer of those streams that do not rise in the mountains or from the swampy region along their eastern base.

There is one physical feature, which has an important bearing on the question of botanical distribution, the effect of which will be alluded to in an after part of this paper. This is the manner in which the plains are traversed by deep and narrow valleys, with abrupt slopes, and cut into the otherwise level, or only slightly undulating, surface of the country. Those troughlike valleys, by favouring variety in the exposure, soil, and drainage, have afforded continuous lines for the migration and diffusion of plants through tracts of country where the prevailing conditions are quite unsuited for their support.

The plains rise gently as the Rocky Mountains are approached, and at their western limit have an altitude of 4000 feet above the sea level. With only a very narrow intervening belt of hilly country, the mountains rise almost abruptly from the plains, and present lofty precipices that frown like battlements over the level country to the eastward.

When travelling in any of the transverse valleys, by which the chain is cut through almost to the prairie level, the mountains are seen to be composed of successive ranges formed by the escarpments of highly disturbed limestones and quartzites of palæozoic age.*

The average altitude of the highest part of the Rocky Mountains is 12,000 feet; but they never rise into marked peaks, and their cliff-like structure still further detracts from the grandeur of their appearance. The forest extends in altitude to 7000 feet; and as some of the passes are much under this elevation, the chain cannot be considered as a direct bar to the passage of the more striking kinds of vegetation.

Meteorological observations were obtained for the winter and spring seasons of both 1857-58 and 1858-59, at Fort Edmonton, which is situated in the plain country, and about 100 miles east of the Rocky Mountains, in Lat. 53° 32' N., Long. 113° 20' W., and at an altitude above the sea of 2000 feet.

In order to show more exactly the nature of the climate at these seasons of the year, the following abstract of the thermometric observations is given:—

I. *From Daily Observations, excluding Maxima and Minima.*

	Highest.	Lowest.	Range.	Mean.	No. of Observations.
1858. January, . .	45°	-19°5	64°5	11°2	62
... February, . .	55°5	-41°5	97°	9°3	61
... March, . . .	56°	5°	51°	34°9	93
... April, . . .	76°	24°	52°	45°1	90
... October, . .	53°	16°	37°	38°5	49
... November, .	47°5	-19°	66°5	27°1	85
... December, .	29°8	-27°5	68°	-2°9	93
1859. January, . .	42°	-26°	68°	12°	93
... February, . .	42°	-37°	79°	5°1	84
... March, . . .	44°5	-2°5	47°	24°9	91
... April, . . .	65°	11°	54°	32°5	90
... May, . . .	64°	37°	27°	50°8	22
Mean for January, February, March, and April 1858, .					<u>25°12</u>
Do. do. do. 1859, .					<u>18°62</u>

* A sketch of the geology of this country will be found in the "Geological Journal," November 1861.

II. From Daily Maxima and Minima Observations.

	Maxima.		Minima.		Mean Tempera- ture.
	Highest.	Mean.	Lowest.	Mean.	
1858. January, . .	°	°	-22·5	- 3·3	°
... February,	-41·	- 3·2	...
... March,	1·5	22·	...
... April,	11·5	27·9	...
... October,	18·5	26·2	...
... November, . .	52·	34·	- 2·	18·9	26·45
... December, . .	37·5	6·4	-25·	-14·	-7·6
1859. January, . .	45·	20·1	-35·7	- 1·	9·55
... February, . .	43·5	13·6	-38·	-11·1	1·25
... March, . . .	44·5	34·7	- 6·	11·4	23·05
... April, . . .	67·	41·8	0·0	20·4	31·1
... May, . . .	67·	58·6	31·	37·2	47·9
Mean of Minima for Jan., Feb., March, and April 1858, .					21°·7
Do. do. do. do. 1859, .					9·8

The climate of the prairies, and of the eastern slope of the Rocky Mountains, a district having a mean latitude of 53° N., differs in many respects from that of the Eastern Lake District, the mean latitude of which is about 48° N., although they possess nearly the same average temperature for the year. Thus, while the Canadian and Eastern climate is expressed by a low but steady winter curve of temperature, which is counteracted in its effect upon the vegetation by a correspondingly high summer curve, the manner in which the more northern and equally continental climate of the Western Saskatchewan acquires the same average, is by rapidly succeeding irregularities and variations of temperature, according to the direction of the dominant wind for the time. The influence exerted by those winds during the winter months was very clearly observed at Edmonton during the first part of the year 1858. They may be divided into three groups at this place:—1. The clear winds, that in winter bring the intense extremes of cold, and which blow from the north-west. In summer, this direction is exactly reversed, when it becomes a clear, hot, and dry wind. This may be considered as the proper continental current, and is the wind of fine steady weather. It often only affects the lower stratum of the

atmosphere, the clouds being seen to pass right across it in upper air. This wind must not be too rigidly defined by its mere direction, as it often blows from anomalous quarters, while its character remains the same, being quite subordinate in form to either of the next two groups, which are both stormy winds.

2. This group includes all the winds that generally blow from between north and east, and which in winter bring snow, and in summer cold fogs.

3. The south and south-west winds, that, blowing from the Pacific Ocean through and over the Rocky Mountains, always bring clouds, warmth, and sometimes even rain during the winter.

The struggle among these three climatic agencies gives rise to the following succession of phenomena. A few days of fine, steady, though perhaps intensely cold weather, with the wind from the north-west, is followed by a slight rise in the temperature, caused by the north-east wind having piled a canopy of cloud over the lower stratum, and so preventing radiation. This is effected gradually, every morning the sky being more and more overcast, and clearing later in each successive day, until at length it remains cloudy till evening, when a cutting north-east wind commences, that soon increases to a storm, followed by snow. This lasts for two or three days, till the snow begins to fall more gently, and with the temperature rising, at length the clouds break, when the upper stratum of air is seen moving rapidly from the south-west, carrying light fleecy clouds against a clear sky. Generally, in the course of the following night, the south-west wind affects the lowest stratum of air, and increases in violence, sometimes ranging rapidly through many points of the compass, showing that it takes the form of a cyclone, and at the same time bringing a high temperature and dense clouds discharging rain. One of these storms, for instance, passed over the Saskatchewan Plains on the 3d of January 1858; and at Edmonton the *minimum* temperature for that day and night was 36°, while the *maximum* for the next twenty-four hours was only 10°. Again, on the 24th of the same month, at the close of another of these storms, the

temperature fell from 37° at 4 P.M. to $-13^{\circ}5$ before midnight, or a difference of $50^{\circ}5$ in eight hours.

After the storm from the south-west has passed, the light north-wester generally sets in irregularly, and the temperature falls in the course of a few days to an extreme, during which there is calm, followed by the haze and the overhanging cloud from the north-east as before.

Along the eastern base of the Rocky Mountains these changes are even more distinctly marked than in the longitude of Edmonton, and the effect they have in reducing the amount of snow is very remarkable, so that there is a narrow tract close to the mountains where there is never more than a few inches of snow on the ground, and the rivers, when rapid, remain open during the winter. In consequence of this, a few ducks are found to linger throughout the whole season in the mountains, while from the Plain country, in latitudes much further south, they are necessarily absent from October till May. Forty miles east of the mountains the snow-fall is much increased, but during the depth of winter rarely exceeds two feet in depth. From the prairies the snow evaporates rapidly, and excepting in hollows where it drifts, it never accumulates; but in the woods, where protected, it often reaches the depth of three to four feet towards spring.

During the steady cold of the winter the ground freezes to a considerable depth, especially in seasons when there is a small fall of snow. Thus at Edmonton the limit of the frozen soil was found on the 5th of March 1858 to be at the depth of nearly seven feet; and in the same spot in the year following, on the 16th of March, it was marked at six feet. Regular observations were taken during both winters, and also when travelling in the plains, for the purpose of ascertaining the temperature of the soil at the depth of two or three feet, according to the method suggested by Dr Hooker. The following table gives the means of these observations:—

1857-8, Fort Carlton.

Month.	Mean Temp. of Air.	Mean at Two Feet.	Mean at Three Feet.
November,	17°3	35°8	36°6
December,	8·9	30·4	32·8
January,	0·0	23·4	29·3
February*,	7·4	18·3	24·3
March,	26·3	24·6	25·3
April,	35·8	30·3	30·2
May,	45·0	33·8	31·6
June, †	54·9	38·6	33·8
1858-9, Fort Edmonton.			
November, ‡	26·45	35·7	Not observed.
December,	7·6	23·4	
January,	9·55	20·8	
February,	1·25	17·6	
March,	23·0	25·2	
April,	31·1	30·3	
May, §	47·9	32·1	

(The thermometers were sunk in brass tubes attached to a light wooden rod, and had the bulbs protected with flannel, to preserve them from the influence of the atmosphere while they were removed for examination.)

At Fort Carlton observations were also made by M. Bourgeau almost daily, in order to determine the temperature within the trunks of large trees. For this purpose thermometers were placed obliquely into the heart of a *Populus balsamifera* two feet in diameter, and of an *Abies alba* of the same size. These observations only served to show that, as might be expected, the temperature of the trees accords much more closely with the mean temperature of the atmosphere than does that of the soil, even at the depth of only two feet; and further, that there is no marked difference at very low temperatures between the resisting power of ever-green and deciduous trees. The means of these observations were as follows: ||—

* First seventeen days only.

† First eight days only.

‡ From 9th to 30th.

§ First eight days only.

|| Some of these observations have been printed in the Proceedings of the Linnean Society, 1859.

Month.	Air.	Poplar.	Spruce.
1857. December, .	8 ^o ·9	9 ^o ·67	13 ^o ·63
1858. January, .	0·0	0·	0·8
... February, .	7·4	7·11	3·96
... March, .	26·3	29·27	20·93
... April, .	35·8	35·54	...

So long as the vegetation remains dormant during the winter season, the sudden changes which have been described, however great, can have little influence upon plant life; but when the mean temperature for the twenty-four hours rises above the freezing-point, and the powerful sun of each day, with the abundant moisture derived from the melting of the snows, stimulate the ascent of the sap and the germination of seeds, these sudden alternations must have a very baneful effect, and exclude from the flora of the country many plants that it would otherwise be quite fitted to sustain. From the middle of March until the third week of April is the usual duration of this critical period; but as late as the middle of May serious damage is frequently done to the vegetation by sudden variations of the temperature. This is without taking into consideration the night frosts, which are of common occurrence almost throughout the entire summer, and which, of course, must completely prevent the growth of many kinds of plants.

During the summer months, even in the true prairie country, rain, with cloudy weather, is much more frequent than might be expected from the position which the district occupies in the centre of a continent, and barred from the influence of the moist south-west winds by a continuous chain of mountains. On the prairies immediately to the west of the Red River Settlement, as far as Turtle Mount, thunder-storms, with heavy rains, are of almost daily occurrence during the months of July and August. The temperature in that district was often very high, the thermometer several times reaching 95° in the shade.

On the higher plains to the west, between Carlton and the Rocky Mountains, which range in altitude from 2000 to

3000 feet, thunder-storms are more rare, yet a good deal of rain falls. During the latter half of June 1858, there were nine days of rain and cloudy weather to six of fine clear sky. The mean temperature for the same period was $58^{\circ}8$, from observations taken at sunrise, 2 P.M., and sunset, the highest recorded being 72° , and the lowest 46° . This excludes the minimum night temperature, however, which often fell within a few degrees of the freezing point. The mean degree of moisture in the atmosphere was 0.64, saturation being 100. During the month of July in the same year there were twelve days of cloudy sky and rain. The mean temperature was $59^{\circ}5$, the extremes recorded being 70° and 40° , with the degree of humidity 0.59, or rather less than in June.

In August, in the district along the base of the mountains, having an altitude of nearly 4000 feet, the mean temperature was 54° , and the extremes recorded as occurring between sunrise and sunset were 79° and $40^{\circ}5$. Almost every night, however, we found that ice formed in the kettles, and that the ground was covered with hoar-frost.

The radiation, as might be expected, is very great during the summer nights in the northern prairies, so that when the sky is clear the quantity of dew that forms is great in proportion to the degree of moisture in the atmosphere. It is owing to this—combined with the sharp frosts in August and September, which arrest the sap before the grasses have fully flowered and faded—that the rich pasture along the North Saskatchewan Plains is preserved green and juicy until the snow falls, after which the hard steady winter keeps it fresh and nutritious as artificial hay until the return of spring. Along the South Saskatchewan the country is arid, and without such pasture; but in travelling in that region no marked difference was observed in the frequency of rain-clouds during the summer than when further to the north; and that a considerable amount of moisture passes over these plains is proved by the marked increase in the vigour of the vegetation on the high and isolated patches of table-land which are scattered over the arid country. It is probable that the prevalence of a hard clay soil, formed from the cretaceous strata, which bakes under the heat of the sun from

the want of moisture in early spring, is the immediate cause of this barrenness. The little snow which falls on the open plain is at once swept off by the wind and evaporated during the winter, so that in spring the clear powerful sun at once bakes the soil and prevents the germination of seeds.

The weather experienced in the Rocky Mountains was very irregular, with a great daily range of temperature. Thus, in the end of August the thermometer during the night was as low as 14° at an altitude of 6000 feet, and almost every night it fell considerably below the freezing point, although during the day it often reached 70° to 80° . In the valleys of the eastern slope the amount of rain-fall is very small compared to that on the first part of the descent to the west, when fine weather is the rare exception even in September. This only applies, however, to the mountains north of the 51st parallel of latitude, south of which, for some reason, the rain-fall on the western slope in the valley of the Kootani River must be much less, judging both from the experience of two seasons and from the nature of the vegetation, which is of the arid type.

On the eastern slope, throughout the entire summer, there are occasional falls of snow at altitudes above 5000 feet; but snow never lies deeply at any season. It is only on the various "heights of land" which have an altitude of from 6000 to 7000 feet, and for the first few miles of the western descent, that snow appears to accumulate in the valleys in large quantities—sometimes to the depth of 16 to 20 feet. The higher valleys of the central mass of the mountains are occupied by glaciers, some of which are of very considerable size, even when resting on the eastern slope. They are, however, fed principally by the snows that accumulate on the western slope, so that when ranges equally high are cut off from the influence of the western moisture, no glaciers have been formed. This exactly conforms to what has been observed by Dr Hooker and others regarding the diminished altitude of the snow-line as the nearest seaboard to a range of mountains is approached.

In the latitude of 49° the country to the west of the Rocky Mountains is very rugged and mountainous for the whole distance to the Pacific coast. South of that parallel, however,

there are great expanses of desert plain, owing to the influence of the Cascade Range of mountains, which forms almost an unbroken wall 4000 feet in height, running parallel to the coast, and cutting off the moisture from the interior. In descending to the westward, therefore, from the Rocky Mountains, into the depression that intervenes between them and the Cascade Range, a belt of moist climate is met with where the winds that have passed over the coast-range first strike on the higher and interior range. Then follows a belt of dry climate, increasing in aridity as we proceed westward, and get more completely sheltered by the coast range, but on crossing which we at once get into the humid climate of the Pacific coast, with its wonderful development of forest growth.

Having thus briefly sketched the leading physical peculiarities which influence the character of the vegetation in the region treated of, I shall next give a short outline of the manner in which authors have divided British North America into Botanical areas, and endeavour to show the position which the country explored by the Expedition occupies among them, as indicated by the collections of M. Bourgeau and by the physiognomy of its vegetation.

The collections made by M. Bourgeau were forwarded to England from time to time, and were duly received by Sir William Hooker at the Royal Botanic Garden at Kew. They consisted—1st, Of plant specimens prepared for preservation in the Herbarium ; 2d, Seeds and roots of plants for culture, many of which have been successfully raised at Kew ; 3d, Specimens of the vegetable products used in the country by the Indians, and which are preserved in the Kew Museum of Economic Botany. M. Bourgeau also made collections of insects and shelled mollusca, all of which were forwarded to the British Museum.

Of the dried plants, there were in general twelve specimens of each species sent home, and the duplicate sets have been distributed to the various public herbaria in Europe and America, including that of our own university, each specimen having been named before its issue from Kew by Mr Black, curator of the Herbarium there, who prepared the list under the superintendence of Dr Hooker.

The collection of flowering plants and ferns consists of 819 species, belonging to 349 genera and 92 orders, which is more than two-fifths of the total flora of British North America. In the list, there are 62 species returned as undetermined, some of which will most likely prove to be new. In the relative order of their importance, from a number of species, the principal families stand thus:—

Compositæ form	$\frac{1}{8}$ th	of the whole.
Cyperaceæ ...	$\frac{1}{8}$ th	...
Gramineæ ...	$\frac{1}{8}$ th	...
Leguminosæ ...	$\frac{1}{8}$ th	...
Rosaceæ ...	$\frac{1}{8}$ th	...
Ranunculaceæ ...	$\frac{1}{8}$ th	...
Cruciferæ ...	$\frac{1}{8}$ th	...
Salicaceæ ...	$\frac{1}{8}$ th	...
Scrophulariaceæ ...	$\frac{1}{8}$ th	...

The following analysis of the collection will give a further idea of the general nature of the flora of the country from which it was made.

Orders.	No. of Genera.	No. of Species.	Of which undetermined.	In British North America.	
				Genera.*	Species.*
Ranunculaceæ, . . .	11	32	...	16	72
Menispermaceæ, . . .	1	1	...	1	1
Berberideæ, . . .	1	1	...	3	5
Sarraceniaceæ, . . .	1	1	...	1	1
Nymphæaceæ, . . .	1	1	...	3	4
Papaveraceæ, . . .	1	1	...	3	3
Fumariaceæ, . . .	1	2	...	4	9
Cruciferæ, . . .	14	31	7	25	104
Capparideæ, . . .	2	2	...	2	2
Cistineæ, . . .	1	1	...	3	5
Violaceæ . . .	1	8	...	1	18
Polygalaceæ, . . .	1	3	...	1	7
Droseraceæ, . . .	1	1	...	2	9
Lineæ, . . .	1	2	...	1	3
Caryophylleæ, . . .	6	17	3	12	66
Paronychieæ, . . .	1	1	...	2	2

* These columns are given for comparison from Sir John Richardson's "Arctic Searching Expedition, 1851," vol. ii. p. 322. It is hardly necessary to remark, that in this and the other works of this veteran explorer and philosopher will be found generalizations respecting the climate and vegetation of British North America, which the results of this expedition have only served to establish and apply for a very small area of the region which he treated of.

Orders.	No. of Genera.	No. of Species.	Of which undetermined.	In British North America.	
				Genera.	Species.
Malvaceæ, . . .	1	1	...	3	5
Tiliaceæ, . . .	1	1	...	2	2
Hypericinææ, . . .	1	1	...	1	8
Acerinææ, . . .	2	3	...	2	8
Oxalidææ, . . .	1	1	...	1	5
Geraniaceæ, . . .	1	4	...	2	6
Balsaminææ, . . .	1	2	...	1	2
Rhamnææ, . . .	2	2	...	2	6
Anacardiaceæ, . . .	1	2	...	1	6
Leguminosæ, . . .	13	50	7	26	98
Rosaceæ, . . .	16	48	7	24	124
Haloragææ, . . .	3	4	...	4	10
Onagrariææ, . . .	3	13	2	6	28
Cucurbitaceæ, . . .	1	1	...	2	2
Cactaceæ, . . .	1	4	4	1	2
Loasaceæ, . . .	1	1	...	1	3
Grossulariaceæ, . . .	1	7	...	1	16
Saxifragaceæ, . . .	4	15	...	8	56
Crassulaceæ, . . .	1	2	...	2	3
Umbelliferaæ, . . .	10	14	1	28	39
Araliaceæ, . . .	1	3	...	3	7
Loranthaceæ, . . .	1	1	...	1	1
Corneæ, . . .	1	4	...	1	7
Caprifoliaceæ, . . .	6	13	...	7	24
Rubiaceæ, . . .	2	5	...	5	15
Compositæ, . . .	40	112	8	70	321
Valerianaceæ, . . .	1	1	...	2	6
Campanulaceæ, . . .	1	2	...	1	8
Lobeliaceæ, . . .	1	1	...	1	6
Vaccinææ, . . .	2	5	...	1	16
Ericaceæ, . . .	7	9	...	10	40
Pyrolaceæ, . . .	2	4	...	5	16
Primulaceæ, . . .	7	10	...	8	23
Oleaceæ, . . .	1	1	...	1	3
Gentianaceæ, . . .	2	6	...	8	34
Apocynææ, . . .	1	2	...	1	4
Aselepiadææ, . . .	2	5	...	1	11
Polemoniaceæ, . . .	3	5	...	3	13
Hydrophyllææ, . . .	1	1	...	2	5
Convolvulaceæ, . . .	1	1	...	3	6
Solanææ, . . .	2	5	2	5	8
Boraginaceæ, . . .	8	17	2	5	27
Labiataæ, . . .	9	9	...	24	40
Verbenaceæ, . . .	1	1	...	2	7
Scrophularinææ, . . .	7	24	2	20	74
Lentibulariææ, . . .	2	2	...	2	8

Orders.	No. of Genera.	No. of Species.	Of which undetermined.	In British North America.	
				Genera.	Species.
Plantagineæ, . . .	1	2	...	1	5
Nyctagineæ, . . .	2	2	...	2	3
Polygonaceæ, . . .	4	14	...	5	34
Amaranthaceæ, . . .	1	1	...	1	6
Chenopodeæ, . . .	8	17	1	8	20
Santalaceæ, . . .	1	2	...	1	2
Elæagneæ, . . .	2	3	...	2	3
Aristolochiaceæ, . . .	1	1	...	1	1
Euphorbiaceæ, . . .	1	1	...	2	8
Cupulifereæ, . . .	3	4	1	5	15
Salicaceæ, . . .	2	31	...	2	48
Cannabinaceæ, . . .	1	1	...	2	2
Urticaceæ, . . .	3	3	...	4	8
Betulaceæ, . . .	2	4	...	2	11
Conifereæ, . . .	5	13	4	7	20
Typhaceæ, . . .	2	3	...	2	4
Aroideæ, . . .	3	3	...	6	9
Naiadaceæ, . . .	2	4	...	4	14
Alismaceæ, . . .	3	5	...	2	3
Hydrocharideæ, . . .	1	1	...	2	2
Orchideæ, . . .	8	13	...	16	54
Irideæ, . . .	2	2	...	2	8
Liliaceæ, . . .	11	20	...	16	45
Melanthaceæ, . . .	4	4	1	5	5
Juncaceæ, . . .	2	13	3	2	23
Commelynaceæ, . . .	1	1	...	0	0
Cyperaceæ, . . .	5	68	4	8	218
Gramineæ, . . .	33	62	...	49	153
Filices, . . .	13	17	...	17	47
Lycopodiaceæ, . . .	1	4	...	2	12

Summary of above.

1. In M. Bourgeau's collection,
 - 819 species.
 - 349 genera.
 - 92 orders.
2. Of the same orders there have been enumerated by Richardson, as occurring in British and Russian North America—
 - 471 genera ;
 - 2155 species—
 the total flora which he enumerates ; comprising
 - 118 orders ;
 - 509 genera ;
 - 2270 species ;
 viz., 1725 dicotyledons and 554 monocotyledons.

In treating of the distribution of plants in British North America, Sir John Richardson* has divided the region into three zones, in the following manner:—

1. The Polar Zone, which embraces the land lying detached from the continent, and north of Lat. 73°. The flora of this zone consists of plants belonging to 21 natural orders, among which the *Cruciferae*, *Gramineae*, and *Saxifragaceae*, are the principal.

2. The Arctic Zone, which extends from the above-mentioned limit south to the Arctic Circle, excepting towards the eastern side of the continent, when, owing to the configuration of the land and the abnormal depression of the temperature, the characteristic Arctic flora passes for 10° south of that limit. An outlier from this flora also passes the south along the ridge of the Rocky Mountains. The number of natural families is in the Arctic Zone increased to 67, and the most marked feature is the predominance of *Cyperaceae*.

3. The Woodland Zone, which stretches across the continent obliquely, conforming to the divergence of the Arctic Zone from its proper latitudes, and thus lying between 45° and 55° of latitude on the Atlantic Coast, but between 50° and 60° of latitude on the Pacific Coast.

This zone he divides into three districts—

1. The Eastern Woodland district of Canadian Forest, which extends westward as far as Lake Winnipeg.
2. The Western Woodland district, from the Pacific coast to the Rocky Mountains.
3. The Central or Plain district, lying east of the Rocky Mountains.

The number of natural orders represented in this zone is about 117, being an increase of 50 over the number in the Arctic Zone.

As M. Bourgeau returned to England at the commencement of the third season's explorations without crossing the Rocky Mountains, his collection only consisted of the plants gathered from between Lake Superior and the eastern slope of that range. It thus represents a portion of Richardson's Eastern district, nearly the whole of the Prairie district that

* Arctic Searching Expedition 1851, vol. ii., App. No. 3.

lies within the British territory, and the alpine and subalpine district of the Rocky Mountains.

Until a thorough and critical analysis of the whole flora is accomplished, we cannot, however, expect much light to be thrown by the method of tabulation on the natural affinities which the floras of the different areas bear to one another; and till then, it is therefore safer, in adapting provisional geographical groups, to rely more on the nature of the forest growth and such evident characters as catch the eye of the traveller. Such an analysis has however been recently effected for the flora of the northern part of the continent in a highly philosophical memoir by Dr Hooker ("Outlines of the Distribution of Arctic Plants," read before the Lin. Soc. of London, June 21, 1861). His work has yielded most important results, modifying the generally received opinion of the uniformity of the Arctic flora throughout every longitude; and by tracing its distribution, he has found strong grounds for supporting the theory first promulgated by the late Edward Forbes, of a southern migration of northern types having taken place during the cold of the glacial epoch, and also of Darwin's view of the high antiquity of the Scandinavian flora.

With regard to the northern flora of the American continent, Hooker has modified the areas described by Richardson, in so far as not distinguishing between an *Arctic* and a *Polar* flora, but merely dividing the whole region into an "Arctic West American Flora," which extends from Behring's Straits to M'Kenzie's River, and an "Arctic East American Flora," which extends from that river to Baffin's Bay, but excludes Greenland, the Flora of which he shows to belong to a European and not to an American type.*

Bearing in view the leading physical features of the country which have already been alluded to, and to the general botanical divisions that have been quoted, I shall now follow the course of the expedition, and briefly sketch the features of the vegetation observed along the route.

The canoe route from Lake Superior to Lake Winipeg, by which the spur of the eastern axis was crossed, passes

* I am indebted to the kindness of Mr Hooker in letting me have an opportunity of studying this valuable memoir while passing through the press.

through a country that is on the whole heavily timbered, but the quality of the forest varies a good deal with the soil and elevation. Thus, round Thunder Bay, on Lake Superior, the ash, elm, maple, and cedar, with a rich undergrowth of rosaceous shrubs, are met with, in addition to the white spruce, larch, pines of several species, birch, and poplars; but on the high lands round Dog Lake, elevated 1500 feet above the sea, the forest consists almost entirely of the latter trees. In descending to Rainy Lake, the more valuable timber re-appears, wherever the soil is favourable to its growth, and such trees as *Pinus resinosa*, *P. Strobus*, and *Cupressus thyoides*, sometimes reach a large size. From Rainy Lake to the Red River Settlement, the forest becomes more varied and richer in its character, comprising elms, oaks, ash, basswood (*Tilia americana*), beech, and ironwood (*Ostrya virginica*), but still with a large admixture of Coniferae. In this district the undergrowth is very luxuriant, many of the shrubs of the Northern States occurring plentifully. On the borders of the lakes and rivers, the Indian rice (*Zizania aquatica*) is abundant, the grain of which, along with fish, forms the principal food of the Saltean Indians.

In proceeding due west from the Red River Settlement, the Prairie country is at once entered upon, being bounded to the north by the wooded country, the limit of which nearly follows the isothermal mean of 41° in a north-west direction, until it reaches the 109th meridian in Lat. 53° N.,* when it sweeps again to the south-west to intersect the Rocky Mountain chain in Lat. 51° . The country to the north of the 49th parallel, and up to the 55th, which was the region examined, is thus boldly marked into two districts by the presence or absence of timber. A third district must, however, be also considered, forming a belt dividing the forests from the true plains, and which at one time was itself forest-land, but having been cleared by the successive devastations of prairie fires, it now combines the advantages of both, having extensive ranges of open land like the prairies, which possess the rich vegetable mould, and

* It is probable that this isothermal, as generally represented, does not sweep enough to the south after crossing the Rocky Mountains from the west, when passing through Long. 114° to 96° .

are covered with the nutritious grasses and leguminous plants of the forest country.

The woodland country which bounds the plains clearly possesses the physiognomy of the sub-arctic province. The most prevalent tree is the *Abies alba*, which only reaches any great size in river valleys. On the dry rising grounds grows the *Cyprés* of the Canadian voyageurs; but under that name they include two different species of pines—*P. Banksiana*, and a pine allied to the *P. inops* of the United States, or to the *P. contorta* of the Pacific coast. A few of this latter species were seen near Fort Carlton, after which they were not again met with on a due west line until near the Rocky Mountains, south-west from Edmonton. The most important though not the most plentiful tree of the wooded country is the birch (*Betula papyracea*), as it is the only hard wood which the natives possess, and is used for making dog-sleighs, snow-shoes, and other necessary articles. These trees, with a few larches, balsam firs (*A. balsamea*), red pines, poplars (*P. balsamifera*, and *P. tremuloides*), comprise the bulk of the forest that covers the country to the north of the Saskatchewan; but by the sides of the rivers, which have generally deeply depressed valleys, there is of course a much greater variety in the vegetation, owing to the sheltered situation and the rich soil.

The belt of partially cleared country which lies to the south of the forest-land, and stretches continuously from the Red River Settlement to the Rocky Mountains, averages 80 to 100 miles in width, but it expands very much towards the west, owing to the bend which the southern border makes to the south-west. In this district the woods are very scanty, and consist almost exclusively of the aspen poplar, which forms small groves and artificial-looking clumps that dot rich pasture lands. Sometimes a small clump of spruce fir has been left by the fires, but this is only in a few rare localities; at least when at any distance from the limit of the true forest. Between Carlton and Edmonton, along the Hudson Bay Company's trail, for a distance of nearly 400 miles, there are not more than five or six spots where any of the Coniferæ have been left. The clearing of this country is due to a very simple cause. The prairie tribes of Indians, 15,000 to 16,000 in number,

live wholly by the chase of the buffalo, and prefer, in consequence, to pitch their tents along the edge of the woods, for the sake of shelter, and at the same time to be near their game. Either by accident, or for the purpose of making signals, the prairies round their camps are generally burnt every few years, and, as a rule, where coniferous trees are destroyed, they are never replaced by the same stock; but the rich alkaline soil is at once seized upon by the wafted seeds of the aspen poplar, to the exclusion of other trees.

It is true that similar fires take place in the thick wood country and in the forests of the Rocky Mountains; but although they do much damage, the chance of their recurring on the same spot within a short enough time completely to remove the timber is small. Where the poplar seeds cannot reach such burnt spots, they are usually crowded with the gaudy plants of *Epilobium angustifolium*, among which the young pine seedlings can gain a footing, so that the forest often reverts in such a case to the coniferous type; but the thickets which spring up, strangely enough, very seldom contain plants of *Abies alba*, but almost invariably consist of the pine which I have alluded to as allied to *P. inops*.

The Saskatchewan and other rivers of the prairies flow through valleys rarely a mile in width, and excavated to the depth of 200 to 300 feet below the general level. The river winds from side to side of this valley, successively rounding rich alluvial flats, which sustain a rich and very different kind of vegetation from that of the plains above. In such low situations, stragglers from the eastern flora are found to extend far beyond the western limit of where they continue to grow on the general surface of the country. Thus the false sugar maple (*Negundo fraxinifolium*) may be found as far west as Long. 108° in the valley of the North Saskatchewan; and on an island in the same river, a short distance above Fort Carlton, the red elm (*Ulmus fulva*) was observed. The oak follows up the valley of the Assineboine River as far west as Long. 100°. The true sugar-maple does not pass beyond the Red River, in which longitude is also found the western limit of the wild plum (*Prunus americana*), beech, ironwood, ash, cedar, arbor-vitæ, Weymouth pine, and other more

valuable trees of the eastern forest. Some of these were, however, seen by Richardson in the wooded country as far north as Lat. 54°. A few trees of *Populus grandidentata* were seen in the valley of the South Saskatchewan at its elbow, although that tree does not extend into the lower part of the valley of Red River from the Mississippi, where it grows in abundance.

Within the "fertile belt" of cleared land we have the vegetation on the alluvial flats of the river valleys, consisting of *Populus balsamifera*, which is the largest tree in that part of the country, sometimes reaching three feet in diameter, with a dense thicket of *Salix longifolia*, *S. rostrata*, *Viburnum edule*, *Crataegus coccinea*, *Amelanchier canadensis*, the wood of which is used for making bows, and the luscious fruit for mixing with pemican; *Cornus stolonifera*, or "red willow," the bark of which the Indians smoke along with tobacco. *Shepherdia argentea* sometimes forms the greater mass of the thicket, and its red juicy berries are the favourite food of grisly bears.

On the prairies of this district, besides the groves of the *Populus tremuloides*, or aspen, there are dense willow thickets surrounding the swampy ground. In such spots there is an immense variety of *carices*; and when, as is often the case, the water is saline, saliferous plants abound, and, as usual, generally of species having a wide range. On the sides of rising grounds the *Eleagnus argentea* forms a low silvery copse, affording food to large coveys of prairie grouse. If the ground is high, or has a light sandy soil, it is then covered with a close matting of the Kin-i-kin-ic, or smoking weed, which is the *Arctostaphylos Uva-ursi* of the Scotch hills; or by the long flabelliform branches of *Juniperus virginiana* var. *prostrata*. Towards the mountains, large expanses of plain are covered with a low birch or alder (*Betula glandulosa*?), six to eight inches high, which in winter give the appearance of a heather-covered moorland to these prairies.

In June and July, in some localities, the prairies are covered with brightly-coloured flowers of the genera *Astragalus*, *Hedysarum*, *Geranium*, *Lilium*, and others, or are completely clothed with a dense low copse of rose bushes. As the country

towards the south merges into open prairie, the clumps of copse and young poplars are found only nestling on northern exposures. The last outliers of the woods to the south form "islands," as they are called in the country, which make a great show from a distance, but when approached, are found by the disappointed traveller to consist merely of a small species of willow, that will yield neither firewood nor shelter.

The true arid district, which occupies most of the country along the South Saskatchewan, and reaches as far north as Lat. 52°, acquires even very early in the season a dry parched look. In the northern district, the accumulation of *humus* and the distribution of the pleistocene deposits have given rise to a great variety in the nature of the soil; but to the south, the cretaceous and tertiary strata almost everywhere form the surface, so that the stiff clay soil, which is often highly impregnated with sulphates of soda and lime, bakes under the heat of the sun into a hard and cracked surface. This must be the principal reason for the arid plains ranging to such a high latitude, as there is quite a sufficient quantity of moisture in the atmosphere during the summer months to support a more vigorous vegetation. This is seen to be the case even as far south as Lat. 49° 30' N., where at the Cyprés Hills, and also on the south sides of the deep valleys and other exposures sheltered from the sun's rays in early spring, pines, spruce-firs, poplars, and many varieties of the northern type of vegetation, appear under congenial but strictly local conditions. In the arid country the characteristic plants are the prickly prairie apples (*Opuntia*), and the shrub-sage or absinthe (*Artemisia*); and in the trough-like valleys that lie east and west far out in the bare plains, these plants may sometimes be seen in full possession of the sunny slopes on the north side, while the opposite side of the valley is clothed with green and arborescent vegetation; while at the same time, showing that it is not local springs that cause the difference, the stream itself is often dried up into a chain of muddy pools. The arid district, although there are many fertile spots throughout its extent, can never be of much advantage to us

as a possession. Even in June and July, the Expedition experienced great inconvenience in traversing it, from the want of wood, water, and pasture.

Along the eastern base of the Rocky Mountains there is much fine land with very rich pasture; but the sharp night frosts which occur throughout the summer would render the raising of cereals very precarious. When close to the mountains, several trees appear which are found in greatest number on the west slope of the continent. Of these the principal is the "Prushe" of the voyageurs, which is so named by them from its general resemblance to the hemlock spruce (*Abies canadensis*). It is, however, a very distinct tree. Two pines were also observed that were not remarked further to the eastward, one of which is only slightly different from the *Pinus monticola* of Douglas. The collections obtained at the base of the mountains are not satisfactory, as, at the time of M. Bourgeau's visit, the season was too late for any plants but alpines.

The valleys of the Rocky Mountains are occupied by forests, excepting in a few localities, where there occur level gravelly plains clothed with tufts of "bunch grass" (*Festuca*). The forest consists principally of the Prushe, Douglas, white and black spruce. This mixed forest, with a very varied undergrowth, extends to 5000 feet in altitude, when it is succeeded by a forest of *Abies balsamea*. The tree that is found highest, however, is the *Abies alba*; and at an altitude of 7000 feet in exposed situations it is quite dwarfed in size, with recumbent branches that spread like thatch over the mountain sides. The altitude of the alpine region in the Rocky Mountains is very variable, and ranges from 7000 to 9000 feet. It is characterised by the occurrence of many plants of identical species with those found in similar situations in Europe.

The following is a list of some of the plants collected by the writer in the eastern part of the chain, in Lat. 52° north, at an altitude of from 7000 to 9000 feet. They are all from one locality, near the height of land of a pass from the South to the North branches of the Saskatchewan River, and were gathered in the end of August 1859:—

Silene acaulis, <i>L.</i>	Castelleja minuta, <i>Doug.</i>
Cerastium alpinum, <i>L.</i>	Polygonum viviparum, <i>L.</i>
— arvense, <i>L.</i>	Oxyria reniformis, <i>Hook.</i>
Stellaria longipes <i>Gold.</i>	Salix reticulata, <i>L. var. nana, Andr.</i>
Fragaria virginiana, <i>Ehr.</i>	— arctica, <i>R. Br.</i>
Potentilla fruticosa, <i>L.</i>	Allium Schœnoprasum, <i>C.</i>
— diversifolia, <i>Lehm.</i>	Ligadenus chloranthus, <i>Rich.</i>
Epilobium alpinum, <i>L.</i>	Juncus ensifolius, <i>Wick.</i>
Saxifraga bronchialis, <i>L.</i>	— arcticus, <i>Wick.</i>
— controversa, <i>Sternb.</i>	— castaneus, <i>Sm.</i>
— Dahurica, <i>Pall.</i>	Luzula parviflora, <i>Duv.</i>
Parnassia fimbriata, <i>Hook.</i>	— spicata, <i>L.</i>
Sedum stenopetalum, <i>Pursh.</i>	Poa alpina, <i>L.</i>
Youngia pygmæa, <i>Ced.</i>	— pratensis, <i>L.</i>
Seneciotriangularis, <i>Hook.</i>	Phleum pratense, <i>L.</i>
Erigeron compositum, <i>Pursh.</i>	Bromus ciliatus, <i>L.</i>
Valeriana capitata, (?) <i>Willd.</i>	Trisetum subspicatum, <i>P. de B.</i>
Menziesia grandiflora, <i>Hook.</i>	Festuca ovina, <i>L.</i>
Cassiope tetragona, <i>G. Don.</i>	Calamagrostis (Desyuxia) coarctata, <i>Torr.</i>
Gentiana propinqua, <i>Rich.</i>	

On commencing the descent of the slope to the west, the change in the nature of the vegetation is very marked, showing a great increase in the amount of moisture which is deposited. Thus, high up on the sides of the valleys, there are dense thickets of *Alnus viridis*, which grows to the height of six and eight feet, with sturdy stems and branches. In the valleys, the forest is quite choked by an undergrowth of *Thuja occidentalis*, *Mahonia Aquifolium*, *Panax horridum*, *Pyrus americana*, *Viburnum Opulus*, along with species of *Vaccinium*, *Ribes*, *Rubus*, *Symphoricarpos*, and many other plants not observed on the eastern slope of the mountains. Wherever the valleys are rocky, the rocks are covered by a close growth of mosses and ferns, both of which groups are almost wholly wanting on the east side, excepting those mosses that grow in swamps. The forest is often impenetrable, from the interlocking of the trunks of fallen trees, many of which are three and four feet in diameter. When travelling with horses, it is difficult, where there is no trail, to get on faster than a mile or two a-day; and to make matters worse, amidst all this luxuriance of vegetation there is nothing that the poor animals can eat excepting a scanty growth of *Equisetum*, of which they are very fond, and which grows on the shingle flats

of the mountain torrents along with a matting of *Dryas* and *Epilobium*, and other alpine plants, the seeds of which are washed down every spring.

On descending the mountains as far as the Kootani River, which flows south-east for eighty miles through a wide valley lying parallel with the direction of the chain, a marked change is again observed in the nature of the vegetation. The forest is free from undergrowth, and consists principally of the *Pinus ponderosa*, which in its habit much resembles the Scotch fir, and frequently reaches the size of four feet in diameter. Along with it is the *Larix occidentalis*, which is equal in girth, but exceeds the pine in height and symmetry. Amongst the noble forest which these trees form, a rider can gallop with ease in every direction, the only underbrush consisting of a few scattered bushes of the red root (*Ceanothus*) or of the *Shepherdia argentea*. On the alluvial flats by the river, the *Juniperus virginiana* was found as far north as $51^{\circ} 30'$ to occur as a large tree 25 feet in height and 1 foot in diameter.

The surface of the ground, where dry and gravelly, is covered with wiry tufts of "bunch grass," and the slopes are clothed with a shrubbery of cherry and service-berry bushes (*Amelanchier*), the fruit of which is the principal food of the Kootani Indians. Westward from the Kootani River to Fort Colville, upon the Columbia, the country is very rugged, and when not confined in narrow valleys the forest generally forms open pine glades. By the sides of the streams and the low borders of lakes the yew and arbutus are found to occur, and in favourable spots the *Thuja gigantea* acquires an enormous size—often ten or twelve feet in diameter. Nevertheless, the prevailing physiognomy of the vegetation in this district is of the arid type; and further to the south, in the Columbian desert, this character is found to reach an extreme phase, there being a total absence of timber; and the country, even where the surface is irregular and rocky, supports nothing but a growth of dry tufty grass, or the worthless sage bush (*Artemisia tridentifolia*). This sterility increases as we approach the Cascade Range; but on passing these mountains by the narrow chasm through which the Columbian River escapes

to the Pacific, the change in the character of the vegetation is very abrupt. When sailing down that river from the Dalles to Fort Vancouver, in a distance of forty miles, the traveller passes from a desert flora to a country clothed by an evergreen forest of unrivalled variety and vigour. The scenery is magnificent, precipices of basaltic rocks rising from the water's edge tier above tier, to the height of several thousand feet, while in the distance occasional peeps are obtained of snow-capped peaks 10,000 to 12,000 feet above the sea-level.

On the western declivity of this mountain range, and on the narrow strip of country that lies between it and the coast, are found the beautiful and stately species of *Abies*, *Picea*, and *Pinus*, which have been introduced into this country from Oregon and Washington territories since the time of Douglas. The collections of that traveller, and those of Jeffrey, have made us familiar with the flora of the forest land along the Pacific coast; and our knowledge will be rendered still more complete by the ample collections of Dr Lyall, who is at present labouring in that country, attached to the N. W. Boundary-line Commission.

I am indebted to the kindness of Sir William Hooker for a memorandum which was left in his hands by M. Bourgeau, stating his opinion regarding the fitness of the Saskatchewan country for agricultural settlement, and a free translation of which I beg to append.

Memorandum by M. Bourgeau.

“ I submit the following remarks on the advantages for agricultural settlement in Rupert's Land and the Saskatchewan prairies of British North America, having been appointed by Sir William Hooker to accompany Captain Pallister's Expedition as botanist.

“ I had especially to collect the plants which grew naturally in the country traversed by the Expedition, and also their seeds. Besides my botanical collection, Dr Hooker advised me to make thermometrical observations at the various stations, and, above all things, to take the temperature of the earth at certain depths, as well as that of the

interior of forest trees ; also to notice the richness and poverty of the vegetation of the country, and the maladies to which plants are exposed. In the second letter and notes addressed to Sir William Hooker, which have already been published,* I have treated these questions with all the care that was permitted to me by observations taken in the midst of the harassment and fatigue of a long journey, but it remains for me to call attention to the advantages there would be in establishing agricultural settlements in the vast plains of Rupert's Land, and particularly on the Saskatchewan in the neighbourhood of Fort Carlton. This district is much more adapted to the culture of staple crops of temperate climates—such as wheat, rye, barley, oats, &c.—than one would have been inclined to believe from its high latitude. In effect, the few attempts at the culture of cereals already made in the vicinity of the Hudson's Bay Company's trading posts, demonstrate by their success how easy it would be to obtain products sufficiently abundant largely to remunerate the efforts of the agriculturists. *There*, in order to put the land under cultivation, it would be necessary only to till the better portions of the soil. The prairies offer natural pasturage as favourable for the maintenance of numerous herds as if they had been artificially created. The construction of houses for habitations by the pioneers in the development of the country would be easy, because in many parts of the country, independent of wood, one would find fitting stones for building purposes ; and in others it would be easy to find clay for bricks, more particularly near Battle River. The other parts most favourable for culture would be in the neighbourhood of Fort Edmonton, and also along the south side of the North Saskatchewan. In the latter district extend rich and vast prairies, interspersed with woods and forests, and where thick wood plants furnish excellent pasturage for domestic animals. The vetches found here, of which the principal are *Vicia*, *Hedysarum*, *Lathyrus*, and *Astragalus*, are as fitting for the nourishment of cattle as the clover of European pasturage. The abundance of buffalo, and the facility with which the herds of horses and

* Lin. Soc. Proceedings, 1859.

oxen increase, demonstrate that it would be enough to shelter animals in winter, and to feed them in the shelters with hay collected in advance, in order to avoid the mortality that would result from cold and from the attacks of wild beasts, and further to permit the acclimatisation of other domestic farmyard animals, such as the sheep and pig. The harvest could in general be commenced by the end of August, or the first week in September, which is a season when the temperature continues sufficiently high and rain is rare. In the gardens of the Hudson's Bay Company's Posts, and still more in those of the different Missions, vegetables of the leguminous family, such as beans, peas, and French beans, have been successfully cultivated; also potatoes, cabbages, turnips, carrots, rhubarb, and currants. No fruit-tree has as yet been introduced; but one might perhaps, under favourable circumstances, try nut-trees, also apple-trees belonging to varieties that ripen early. Different species of gooseberries, with edible fruits, grow wild here; also different kinds of *Vacciniaceæ* are equally indigenous, and have pleasant fruits that will serve for the preparation of preserves and confectionery. The *Aronia ovalis* (*Amelanchier canadensis* must be meant) is very common in this country; and its fruit, commonly known as the *Poire*, or service-berry, is dried and eaten by the Indians, who collect it with great care; and it also serves for the purpose of making excellent pudding, recalling the taste of dried currants. The only difficulty that would oppose agricultural settlements, is the immense distance to traverse over countries devoid of roads, and almost uninhabited. The assistance of Government, or of a well-organised company, would be indispensable to the colonisation of this country. It would be important that settlements should be established in groups of at least fifty householders, for protection against the incursions of the Indians, who are, however, far from being hostile to Europeans. It stands to reason, that the colonists ought to be taken from the north of Europe or from mountain districts, being those accustomed to the climatological conditions and culture of the soil most resembling this interesting country, to the resources of which I call attention.

The produce of agricultural settlements thus established would yield subsistence to the Indians, whose resources for food, supplied only by hunting, tend to diminish every day. The presence of European settlers would form a useful model for this primitive people, who, notwithstanding their native apathy, still appreciate the benefits of civilization."

(Signed) "E. BOURGÉAU."

I may state, in conclusion, that the views here expressed by M. Bourgeau accord on the whole with the opinion I myself have formed of the fertile portion of the Saskatchewan country, and which I believe is also that of the other members of the Expedition.

On the Capabilities for Settlement of the Central Part of British North America. By JAMES HECTOR, M.D., F.G.S., &c.*

The following remarks refer to a portion of the British territories to which much public attention was directed a few years ago—namely, the region which extends from Lake Superior to the Pacific Ocean, lying immediately north of the boundary line of the United States, and drained principally by the River Saskatchewan.

As it was, and indeed—excepting that portion which falls within British Columbia—is still, under the direct control of the Hudson's Bay Company, for the purpose of a fur-trading monopoly, a considerable amount of agitation was employed in Canada, and also at home, in order to have the country I treat of thrown open for settlement, and many statements have gone forth giving an exaggerated view of its worthlessness on the one hand, or of its wonderful qualities on the other.

It is now, however, placed beyond doubt, principally through the labours of several Government expeditions, to one of which I had the honour to be attached, that there do exist within the British territories that I have mentioned extensive areas, with good and varied soil, adapted for agricultural colonisation, but which, from their geographical position, are necessarily subject

* Read before the British Association, Manchester. September 10, 1861.

to all the advantages and defects of a temperate continental climate. Thus the winter is long and severe, the spring short and uncertain, and the summer tends to scorch the vegetation.

But yet in this region the winter is not more severe than that experienced in Canada; and in the western districts, which are removed from the influence of the great lakes, the spring commences almost a month earlier than on the shores of Lake Superior, which is five degrees of latitude further to the south.

On the other hand, the higher latitude, combined with its increased altitude above the sea-level, reduces the effect of the sun's heat in summer so much, that many crops which are readily raised in Canada will not meet with equal success in the Saskatchewan. All common cereals and green crops have been grown successfully, however, even though night frosts are experienced throughout the entire summer.

The depth of the snow is never excessive, while in the richest tracts the natural pasture is so abundant, that horses and cattle may be left to obtain their own food during the greater part of the winter; and with proper care and management there is no doubt that, as far as climate is concerned, sheep also might be reared, were it not for the immense packs of wolves which infest the country.

It is only during the month of March, when the snow acquires a tough glassy crust from the heat of the mid-day sun being each night followed by hard frost, that stock would require to be housed and fed.

These remarks apply, however, more especially to what has been termed the "Fertile Belt," and the nature of which I will endeavour to explain.

The wonderfully fertile savannahs and valuable woodlands of the eastern United States are succeeded to the west by a more or less arid desert, which occupies a region on both sides of the Rocky Mountains, and presents a barrier to the continuous growth of settlements between the valley of the Mississippi and the rich states of the Pacific Coast, and at present only occupied by one spot of civilisation, the Mormon city at the Great Salt Lake.

Under such disadvantageous physical conditions, it is not likely that any line of route for rapid or heavy transport across

this desert will be remunerative, while its construction, in the present disturbed state of American politics, may be indefinitely delayed. Nevertheless, during the last seven years, our sharp-witted and prompt-acting cousins have been spending much money in having every possible route thoroughly explored and surveyed; and were their domestic troubles over, there is no doubt that they would revert to their attempts to bind together their eastern and western provinces.

It is therefore highly satisfactory for us, as British subjects, to know that the arid region extends but a short way to the north of the 49th parallel of latitude, which is the position of the boundary line, and that even the small area of desert within our territories derives its character more from the nature of the soil than from the general climatic conditions.

The British portion of the arid country is a triangular region, its apex reaching to the 52d parallel, while its base, applied along the 49th, extends between Long. 100° and 114° W. It contains, however, many varieties of land, and some limited areas that are really even good; but, on the whole, it must be described as deficient in wood, water, and grass.

Round the northern border of this arid district sweeps the "Fertile Belt" of country which I before mentioned. It is nothing more than the ill-defined boundary of the bald plains from the gloomy woodlands of the circum-arctic forests. As it forms the favourite camping grounds of the Indian tribes, the habit which these savages have of burning the vegetation has gradually improved this country for the purposes of settlement, by clearing off the heavy timber, to remove which is always the first and most arduous labour of the colonist. The "Fertile Belt," which thus possesses all the good qualities of rich soil and an abundant growth of the nutritious leguminous plants of a woodland country, but associated with open expanses ready for the plough, or for depasturage, stretches from the wooded country at the south end of Lake Winnipeg in a north-west direction continuously to the Rocky Mountains, so that the westward progress of settlement will not meet with the same obstacle that checks it within the United States.

We thus perceive that in some respects the Saskatchewan country compares favourably with Canada; but we must not

forget that the valuable timber trees, which are such a great source of wealth to that province, totally disappear as we proceed to the west, only very few of them ever reaching the longitude of Lake Winipeg. Beyond that, in the northern thick woods, the coarse and worthless white spruce, with a few small birches, poplars, and willows, compose the forest growth, while in the "Fertile Belt" almost the only tree is the aspen poplar, which forms very artificial-looking groves and clumps, that add greatly to the beauty of the scenery, but are useless beyond giving shelter and yielding a very inferior quality of firewood.

With all its disadvantages, the Saskatchewan country offers a most desirable field to the settler who is deficient in capital, and who has no desires beyond the easy life and moderate gains of simple agricultural occupations; and it is only the difficulty of access to it that, for the present at all events, prevents its immediate occupation.

Three routes are at present in use by which the country is entered. One is from Hudson Bay, by a broken land and water carriage, rough and cumbrous in its nature, but which has hitherto been the one principally used by the Fur Company. Even they, however, have almost abandoned it now in favour of the third route I shall mention.

The second route is from Lake Superior to Lake Winipeg, and also involves many changes from water carriage to land transport, and never could be used for the introduction of live stock or the conveyance of heavy goods. The only advantage which either of these routes could possess for us is from their both being within British territory.

The third route, which is undoubtedly the natural line of ingress to the country, but, unfortunately for us, passes through American territory, is up the valley of the Mississippi River to the Red River Settlement by way of St Paul's, Crow Wing, and across the low water-shed which there divides the waters of the Mississippi from those flowing to Hudson Bay.

A large portion of the rich fertile plains of Red River lie to the south of the boundary line, and are already being rapidly occupied by American settlers. An American

steamer now plies on that river for a few trips each season, and a railway is projected, and the line partly surveyed, to connect St Paul's with Paulina, where there is a new town situated on the frontier. This route, even at present, is extremely convenient and easy for the emigrant, as it passes through prairie country, so that he incurs no expense for the food of his animals when travelling. There can be little doubt, that if a railway is once constructed by this route, it will become a permanent, and doubtless the favourite, line of communication, and against it no other will be able to compete successfully.

If there were a prospect of the western prairies being soon occupied by a producing population, it might in that case be remunerative to have a line of railway constructed entirely within the British territory, that would have for its object the connection of Canada with our new colonies on the Pacific Coast; but this would justly rank as a great national enterprise, in value much beyond the more western extension of our Canadian provinces.

From the large and flourishing agricultural settlement of whites and half-breeds at Red River, the population of which is now about 8000 souls, such a line of railway might pass westward through the "Fertile Belt" without encountering any serious engineering difficulties. It has been frequently stated that in the Prairie country nothing would be required but the mere laying of the rails; but this is a total misconception of the physical features of the region. The prairies are very rarely level, except over small areas. They have undulations that often swell to the height of several hundred feet, or for miles the traveller winds among abrupt conical eminences; and it is only the general absence of timber, and the sameness of the scenery, that deceive the eye, and give the appearance of flatness. Moreover, throughout the greater part of the Prairie country, not only all the large rivers, but even small and insignificant streams, flow in valleys, with steep sides, deeply depressed below the general level; and these valleys would require the construction of bridges, and often in districts far distant from a supply of any proper building materials. Nevertheless, I believe I can safely state, that

in proportion to the extent of mileage, small engineering expenses would be incurred until the Rocky Mountains are reached.

We now know that this chain does not present any bar to the construction of a railway, as there are several passes which will admit of easy gradients through valleys so wide as to afford great variety in the choice of ground for locating the line.

The mountains proper are not more than 50 to 60 miles broad in the latitude that would be most probably chosen for the line of route, namely between 50° and 52° , when, on crossing them to the west, the gold-bearing valleys of British Columbia are reached. Indeed, within the last few weeks, I have received letters from the Saskatchewan, stating that gold has been discovered in the bed of that river at the Rocky Mountain House, which is 40 miles to the east of the mountains, and quite in the plain country. Two hundred miles further down that river I have seen a few specimens of gold washed out, but I doubt much if it will ever be worked with profit on the east side of the Rocky Mountains within the British territories, as there is no trace on that side of the axis of the ancient rocks from which it must have been derived.

In the rugged country that lies between the Rocky Mountains and the Pacific Coast, I have no doubt that all the valleys are filled with rich auriferous deposits, and every few months accounts arrive of "diggings" discovered in fresh localities. The most recent of them was in a letter from Lieut. Wilson, who is attached to the Commission at present engaged in surveying the boundary line from the Pacific Coast to the mountains, and who mentions that a rush has taken place to a point on the Kootani River.

In carrying a line of railway through this region of British Columbia, the difficulties to be overcome by the engineer are very great. The surface of the country is broken by low mountain chains that run parallel with the coast, and the narrow valleys by which the rivers break through these are rugged in the extreme, but to develop the mineral wealth of this country will in any case require the construction of roads, and would afford more inducement to the laying out of money on this than on any other part of the route.

The rush of diggers into the new country will ensure for it an active though temporary settlement; but those mineral products which it possesses, and which can only be reached by steady energy and the employment of capital, will retain a considerable permanent population, and give that solidity of wealth which alone would warrant the construction of a line of railway through a difficult and otherwise unproductive country. Throughout the Saskatchewan country there are deposits of coal, which, although not to be compared in quality with that we are familiar with in this country, are yet of considerable value. Coal of a similar geological formation, but of somewhat better quality, also occurs on Vancouver's Island and the opposite mainland, near the mouth of Fraser River; and at the former locality it is worked, and finds a market as ordinary fuel, for the manufacture of gas, and, above all in importance to us, for the supply of our steam navy. It answers well for the generation of steam; and the occurrence of this coal on Vancouver's Island, which possesses magnificent harbourage, renders that colony a valuable link in a chain of communication with China and the East Indies, by way of a route across the North American continent.

