

NORTH OF ROSSLAND

Two Big Properties Bonded by a New York Syndicate.

HIGHLAND'S BIG SHOWING

Ledge is Over 30 Feet Wide and Shows Masses of Solid Ore all Through It—Union is Opened by a Shaft and Looks Very Well.

An option has been given to D. D. Cook & Co., of New York, on the Highland group and the Union mine. The Highland group consists of the Highland, Sierra Madre and Sacia, three claims lying on Rock creek, about four miles north of town in a direct line. The Highland group is owned by M. S. Thomson, Lou Williams and others and has been crown granted. A shaft has been put down 60 feet and a crosscut run out 20 feet to the south from the 40 foot level. The showing on the surface is immense, the ledge running from southwest to northeast and being 30 or 40 feet wide. In several places the ore comes to the surface in large masses. This ore runs from \$5 to \$28 in gold with a good percentage of copper through most of it. The shaft was sunk on the vein and the crosscut was run out to cut it. The crosscut is in mixed ore for its entire length and when work was suspended the foot wall of the ledge had not been reached.

There is no question as to the existence of a very large ledge on the ground and it is reasonably certain that a chute of pay ore will be found. Mining men who have seen the Highland have been free to express their favorable opinion of it. Charles Lane, of the great Ute mine at Angels camp, California, came up to look at it last spring and made any offer for it, but his offer was declined. It is not over four miles from the Highland to the Trail smelter and a wagon road is already under construction from the Falls, only half a mile east, to the Columbia river. The wagon road can be extended to the Highland at an inconsiderable expense. This would make the property very easy of access and would enable the shipment of ore to the Trail smelter at an expense of not over \$1 per ton.

The Union and the other properties on which an option has been given to Messrs. Cook & Co., lie about half way between town and the Highland. A shaft 60 feet deep has been sunk and some surface cuts made. A well defined ledge has been found. The bottom of the shaft shows a good wide vein with 18 inches of clear ore. This ore carries gold, silver and copper. Its chief value is in silver and in this respect it is like the ore in the Mayflower, Blue Bird and other claims in the South Belt now coming into prominence. The average value of the Union ore is about \$30. Some very high assays have been had from the surface ore.

The Red Eagle Organized. The Red Eagle Gold Mining company was organized Wednesday with W. H. Fife of Tacoma, President; William Bennison, vice president; T. G. Elgie, secretary and treasurer and J. W. Cover, managing director. C. W. Callahan, is to be the consulting engineer. Mr. Fife, the president, was formerly one of the wealthiest citizens in Tacoma and is a man of irreproachable character.

On Cariboo Creek. J. Hilliard Leach of Winnipeg is down from Cariboo creek, where a company, organized by himself in the east, has acquired the Eureka group, consisting of the Eureka, Treasury, Shamrock and Tenderfoot. He has some very handsome specimens of quartz and galena ore, from which assays have been obtained running up to 127 ounces in silver and 40 per cent in lead. Only a little surface work has been done on these claims, but the syndicate now has a force of men at work driving a crosscut tunnel to tap the vein at a depth of 100 feet. The vein shows about 8 to 13 feet in width on the surface, with about one-half of it of paying values. The company is known as the Winnipeg and Eureka Mining company.

Hattie Brown Improving. Surface prospecting on the Hattie Brown was finished before the recent snowstorm and the work resulted in disclosing the presence of five veins running through the property, all of which justify development. The discovery vein has been stripped for 200 feet from the old workings and looks very strong and continuous. Work has for the time being been concentrated on a permanent working shaft which is being put down on the big north vein. This shaft is now down 20 feet and was started on well mineralized vein matter which is gradually giving place to a solid pyrrhotite. A shaft house and blacksmith shop are now being erected. E. W. Lillegren is directing the work.

IN SOLID SHIPPING ORE. Shaft on the Giant Appears to Be on Top of a Pay Chute.

The new owners of the Giant are working eight miners at present and are building a bunk house, shaft house, etc., as well as a wagon road to the mine. As soon as these jobs are finished a tunnel will be begun on the main east and west vein near the west side line. On the big north and south vein the tunnel started by the old owners is now in 40

feet and the breast is well mineralized. A shaft has been started about 200 feet higher up the hill on the same vein, which is now down about 12 feet. The whole bottom of the shaft is ore from which assays up to \$72 in gold have been obtained. Average samples clear across the bottom of the shaft went \$33 in gold. This is of course shipping ore and the Giant expects to be one of the first mines to begin regular shipments over the Red Mountain railroad. Though one of the last of Red Mountain's mines to begin development the Giant at present promises to be one of the first to become a producer and dividend payer.

VERY QUICK WORK.

Compressor for the Red Mountain Already Here and Buildings Finished. The main tunnel of the Red Mountain is in 200 feet. There are 226 feet yet to go to crosscut the north ledge. The rock is very hard and progress has been slow up to date because of hand work. As soon as the machinery is installed they expect to make much better progress. The shaft on the north ledge is 30 feet deep and the vein has been stripped for a distance of 250 feet. It is the intention to concentrate the work in sinking the shaft and driving the tunnel and not to drift or do side work until the shaft and tunnel are connected. At the mouth of the north ledge shaft a substantial shaft house has been built, also ore bins.

The building for the compressor is just finished, together with office building. The foundation for the compressor is also finished and the work of setting up the machinery has just begun. The seven-drill compressor plant arrived from the Rand company at Sherbrooke Saturday, about the quickest shipment on record from the time of the order. Pretty nearly everything the Red Mountain has done up to date has been the quickest on record. There has been less hesitation and delay than in almost every other property in the camp. The owners have apparently full confidence in the value of their claims and have been willing to turn powder and men loose on it from the start. They are piling up some pretty ore at the mouth of the shaft but will not attempt to ship ore until a full connection is made between shaft and tunnel.

THE BIG TROUT TOO. Mr. McCuaig Buys it for Spot Cash. Adjoins the Snowshoe.

A syndicate headed by Clarence J. McCuaig, of Montreal, this week purchased the Big Trout. The price is not made public but it was a cash transaction. It is a matter of surprise that the property has been so long overlooked. It was only recently discovered, and a survey was made for a crosscut and a survey was made about the same time as the Southern Belle and Snowshoe. The result was that two fractions which were formerly supposed to intervene between the Big Trout and these two claims were cut out and the Big Trout brought squarely up against the east line of the Snowshoe with the Southern Belle close by on the southwest.

The recent work on the Northern Belle, Vestal and Southern Belle has brought to light numerous ledges containing high grade copper and gold ore. No less than four ledges have been found, all of which come from the southwest and run to the northeast. This course would take some of them through the Big Trout ground.

Very little work has been done on the Big Trout itself but the characteristic iron capping of the camp has been found there and assays of surface rock have been made which ran from \$5 to \$12 in gold. This is a large piece of ground, nearly 1,500 feet square and lies on the northeast slope of Red mountain, the east line running along near the road from town to Blue's saw mill. One of the principal veins of the Big Trout was Roy Clark, now connected with the Josie company. Another was H. W. Moseley, of Spokane.

RED POINT COMPANY ORGANIZED

Contract Let For 300-Foot Tunnel—What the Diamond Drill Discovers. The trustees of the Red Point Gold Mining company held a meeting in Rossland on the 10th and elected J. K. Clark president, J. Fred Ritchie, vice-president and P. G. Nash, secretary and treasurer. A contract has been awarded. Work is to begin today and to be completed about March 2. Borings with the diamond drill have already revealed the presence of rich ore bodies in the Red Point.

The property is situated on Lookout mountain. It is held in such high esteem that nearly all the treasury shares of the company were subscribed for before the organization was completed. The Red Point can hardly fail to be a mine.

COLUMBIA AND KOOTENAY.

South Crosscut Opened Up a Nice Showing of Solid Ore. The situation in the Columbia and Kootenay is very interesting at present. Manager King has resumed work in the main tunnel which is now being driven straight for the chute exposed in the Columbia tunnel, from which a carload shipped last year gave smelter returns of over \$50, and which will now be tapped at an additional depth of over 142 feet. On Wednesday he stopped work on the crosscut to the south having passed through about 20 feet of mineralized ledge matter and then opened up a nice chute of solid ore four to five feet in width. This crosscut was driven about 40 feet. It is intended to make a crosscut to the north when the main tunnel gets well into the Columbia ground, which it is just entering. Surface work has disclosed a parallel body 20 to 40 feet north of the Columbia's main vein.

ST. PAUL'S GOOD FIND

Two Feet of Solid Ore Exposed in One Shift's Work

ON THE RAILROAD GRADE

The Vein is Very Clean Out and Well Defined and the Ore Has a Rich Appearance—A Tunnel Will Be Begun at Once.

Reference has already been made in The Miner to the opening up of two or three good showings on the St. Paul by the graders on the Columbia & Red Mountain railroad. In some places where the railroad cuts through the base of the hill on which the St. Paul is situated very strong iron stain was observed and it was evident there were one or two mineral bodies close at hand.

Mr. Moynahan, in charge of the development on the St. Paul, put some men to work several days ago on these showings along the railroad grade. Excavations were made at three points, within a distance of 500 feet. The one furthest down the grade was commenced Thursday morning and immediately a body of almost solid ore fully two feet wide was exposed.

It was a sight to rejoice the heart of any good miner. There was a clear division of the ore from the country rock on either side, the vein widening as it came down from the surface. When a representative of The Miner saw it the face of the hill had been cut down and squared up so that there was a full exposure of the ore body. Some of the ore was brought up to the office of Moynahan & Campbell, and attracted much attention.

WONDERFUL CENTRE STAR.

Another Fine Chute of Pay Ore Opened Up—300 Feet Yet to Run. The main tunnel of the Centre Star is within 300 feet of the Le Roi's east end vein. It is now being driven straight on the vein, but of late its course has been diagonally across the ledge alternately from one side to the other. This has shown up the vein just as well as though it had been crossed a couple of times. It has also demonstrated the presence of a good long chute of high grade ore. This chute has been cut in two places some distance apart and the values of the ore have been most gratifying. Average samples taken each day while the tunnel was crossing the ore chute showed values of from \$80 to \$80 per ton in gold. While these are not the highest values yet in the Centre Star they are probably the best averages, so that the latest chute cut is probably the richest if not the most extensive in the mine.

NEW MACHINERY ORDERED.

The Lee Company Has Ordered a Ten-Drill Plant From Montreal. The R. E. Lee company has ordered a large compressor plant from the Ingersoll-Sergeant Drill company of Montreal. The plant consists of a 10-drill compressor, hoisting engine, drills and pumps, which will be shipped immediately. Work on the foundations at the mine has been begun. The Lee's new plant will be one of the largest in the camp, the plants exceeding it in size being those of the West Eagle, Le Roi and Trail Mining company only.

PELAGIC SEALING.

Decrease of Seal Herds Greatly Exaggerated by United States Officials. OTTAWA, Ont., Nov. 12.—James McCoun, of the Dominion geological survey, who spent part of the summer on the Pribiloff Islands looking into seal life there, returned here last night and will make his report to the government at once to the Minister of Marine. Mr. McCoun says that reports of United States officials as to the decrease of seals on account of pelagic sealing are largely exaggerated. The small catch of skins this year is due to rough weather. Mr. Barro, Hamilton, one of the English commissioners, returned with Mr. McCoun.

VERY NEARLY STUCK

Columbia & Western Passenger Train Had a Hard Time Last Night. The passenger train over the Columbia & Western railway had a hard time of it last evening. There were in the neighborhood of 75 passengers on board, and these, with the baggage, express and mails, made a load which the management knew it was vain to tackle, so to begin with the baggage car was left behind at Trail. Even with only the two passenger coaches the engine had great difficulty in reaching the summit of Smelter hill just above the town of Trail. About 7 o'clock, one hour after leaving Trail, the Tiger switch was reached. Here the engine found it impossible to get both coaches over the switchbank at once, so they "doubled" it. About half a mile this side of the switch the train got stalled again, and after counting noses the conductor made up his mind

he could not pack all his passengers in one coach, so he cut off the rear coach and made another attempt. Only a little distance was gained until the train was stalled once more. Then the engine left this coach too and ran light to Lake Mountain siding. Returning it picked up one coach and got past the siding before it was stalled. By this time it was running short of both wood and water so it left the coach and ran light to Rossland to replenish its stores and secure the aid of the second engine. How it managed after this we do not know, but shortly before midnight it brought its two loads of passengers into town.

BOUGET THE ZILOR.

F. Aug. Heineze is a Member of the Syndicate—Price Was \$10,000. The Zilor, a well known claim in the south belt, adjoining the Lily May, was sold this week to a syndicate made up of F. Aug. Heineze, J. Price Gower of London, England; J. B. Ferguson of Rossland, and some Spokane people, represented by George H. Suckling. The sale was negotiated by Mr. Ferguson, who has long had great admiration for the property.

The Zilor is crown granted and has a large showing of ore. A shaft has been sunk 65 feet and a crosscut, which has been run to the south, is in ore which assays as high as \$35 in gold and silver. The ledge has been stripped 300 feet, and is strong and well defined, being from 9 to 9 feet wide. The Zilor is an old location and owns all surface rights, and can follow the dip of its vein. It belongs to the silver-bearing group of claims referred to elsewhere in this issue of The Miner.

COLONNA DEAL CLOSED UP.

James F. Warden Will Reorganize the Company on His Arrival Here. Harold Kingsmill last night received a wire from James F. Warden, giving the information that all details in the Colonna deal had been finally perfected, and that a meeting would be held on his arrival from Montreal and the new directors installed and also that the new company would proceed with active development.

At present there is a force of men at work in the breast of the crosscut tunnel, now in 60 feet, and in the No. 2 or east shaft. This shaft is now down 14 feet and the vein is widening. The ore, which is a massive chalcopyrite in a siliceous gangue, shows up about 32 inches wide at the bottom. The ore shows great improvement with depth, and the gangue is fast disappearing. The last samples taken out from this opening yielded \$28 in gold and copper, and the vein of ore at work timbering and building a shaft house.

500 TONS SACKED.

Fayne Mine Ready to Ship—Callahan's Company—Mining Notes. SANDON, B. C., Nov. 10.—(Special correspondence).—On the first of the month the Payne mine, S. S. Bailey's interest in which was recently acquired by A. W. McCune of Salt Lake City for \$125,000 had 500 tons of ore sacked and ready for shipment. Another property controlled by the same people, the Mountain Chief near New Denver, has shipped in the last month four carloads of ore and will ship 200 tons more in the near future.

J. C. W. Callahan's company has acquired a number of claims and is working the Corinth and Wild Goose, which are in the vicinity of the Reed and Robertson. The same capable and business-like management is characterizing their work here as has been noticeable at the Galena Farm. Mr. Callahan's company has here a very valuable acquisition to the Slovan as its efforts have already resulted in opening up one really big mine with the prospect of having several more before the season is over.

Properties on the north fork of Carpenter creek are attracting much attention at present. Moore and Vallance are operating on a liberal scale and Dr. Bruner and others are preparing to work three claims which they recently stocked.

The Monitor mine near Three Forks, owned by George Petty, has been pretty well explored this season. There is a high grade vein of ore in sight, which will be mined and reworked to the railroad as soon as the condition of the trail will permit.

BONDED FOR \$40,000.

The Lander Is Taken by an Ottawa Syndicate and Will Be Developed. The Lander has been bonded for \$40,000 to Ottawa people. This claim adjoins the well known Highland on the east and has a large surface showing, the ledge undoubtedly being the same as that passing through the Highland. The owners of the Lander are M. S. Thomson, H. McHenry and D. Stuessi. The bonding syndicate will immediately let a contract for an additional depth of 50 feet in the shaft. Godwin Ordway negotiated the deal.

DEER PARK MINE.

E. J. Kelly, manager of the Deer Park mine, has not yet returned to Rossland, though he has been expected for several days. During his absence it is impossible to get exact information regarding the condition of the mine. We know, however, that the shaft is now down over 110 feet and shows more and more, high grade ore in the bottom right along. Whereas 23 feet above, the ore was mostly low grade stuff with good ore through it in stringers and bunches, now it is mostly high grade siliceous ore with bunches of low grade sulphides through it.

HELLO! SPOKANE

Construction of the Telephone Line Will Be Pushed From Now On.

ROSSLAND MAN IN CHARGE

J. F. McLaughlin Has Acquired a Controlling Interest in the Spokane and Columbia Telephone Company—Will Build Lines All Over Kootenay.

It will be remembered by some perhaps that a charter was obtained last winter from the Dominion parliament for the Spokane & Columbia Telephone and Telegraph company. A charter for the same company had already been secured from the Washington State legislature. The charter thus secured provided for the construction and operation of a telephone and telegraph line from Spokane to Rossland and from Rossland to Trail and other Kootenay points. It also provides for a line to Kettle river and Boundary points. In fact the company organized under the charter has the right to cover all parts in southern British Columbia. Some of the distances to be covered are as follows: Spokane to Marcus, 101 miles; Marcus to Northport, 23 miles; Northport to Rossland, 16 miles; Rossland to Trail, 7 miles; Marcus to Grand Forks, 28 miles; Grand Forks to Volcanic mountain, 12 miles; Grand Forks to Midway, 28 miles; Midway to Camp McKinney, 32 miles.

Very little has been done towards the actual construction of the line because of the lack of sufficient capital. J. F. McLaughlin of Toronto, identified prominently with the floating of the Northern Belle mining enterprise, arrived here three weeks ago and his attention was soon afterwards invited to the Spokane & Columbia Telephone company. Having been familiar with telegraph construction and operation he immediately saw there was wide field for the undertaking and last Wednesday evening he finally closed a deal for a controlling interest in the company. His plans had already been carefully studied and he began the next day to make arrangements for the construction of the line from Rossland to Northport. Part of the line from Marcus to Spokane had already been completed and all of it will now be finished as soon as possible. The line from Rossland to Northport will probably follow the old wagon road. The line from Rossland to Trail will also be constructed at once. Mr. McLaughlin will reorganize the company, the capital of which is \$125,000, and he himself will be the president. The lines into the upper Kettle river and Boundary districts will probably not be built till next spring. But it will not be many weeks till there is telephone connections between Rossland and Spokane.

MINING NOTES.

C. W. Callahan has ordered that work be resumed on the Deadwood immediately. Very good winter quarters had already been erected. Moynahan & Campbell have been appointed to the management of the Novelty. Mr. Moynahan is now actively engaged in laying out a plan of development. John A. Finch is president of the reorganized Novelty company and its financial affairs are in good shape.

A contract was let last week for the sinking of the shaft on the south end of the Lily May. Very good progress is being made. Almost the entire bottom of the shaft is in ore. A careful sample made last week of material clear across the bottom ran \$12 in gold and \$4 in silver.

A new hoist has been ordered for the Mayflower and the necessary excavating work is now being done for it. In the meantime the shaft is closed. No further work will be done in the shaft until the hoist is in place. A considerable amount of shipping ore is now on the dump. The face of the tunnel now has a narrow seam of very rich ore. The large ore body is in the face of the crosscut run out from the bottom of the shaft and described elsewhere in this issue of The Miner.

The water has been pumped out of the Monita shaft and the retimbering of the shaft has been completed. Manager Moynahan made a careful personal examination of the shaft and found a vein of solid ore three feet wide in the bottom. The ore is said to be of shipping quality.

The Old Flag Mining company which owns a group of claims on the southeast slope of Lookout mountain near Waneta, has let a contract for a 100-foot shaft on the Eureka No. 1. Two cuts have been made on the ledge exposing both walls, 15 feet to 18 feet apart and showing some clean ore in bunches. Assays up to \$44 in gold and copper have been obtained. The property is well located for working being only a mile from the Columbia river.

PERSONALS.

F. J. Dean of the Victoria Province spent several days in Rossland this week. C. W. Callahan is in town and has placed an order with James D. Sward of the Ingersoll company for a hoisting plant for the Galena Farm on Slovan lake.

STRIKE ON THE NEVADA.

Two Feet of Fine Looking Ore Found in the Crosscut From the Shaft. Two feet of good looking ore have been found in the Nevada. The shaft started well up the hill from the west end of the claim is now down 75 feet. A crosscut was run out to the east and had gone only a short distance when the vein was encountered. The vein runs from southwest to southeast. The ore is mixed with quartz and carries a good deal of fine grained copper. Assays are being made in Spokane and The Miner is not able to report them. Work has been suspended at the mine for the present owing to the fact that no houses have been built for winter quarters.

Sale of the Robert J.

W. H. Taylor & Co. have purchased the Robert J. on the north fork of Salmon river for \$12,000. It is a silver-copper claim of high grade and belong to Frank C. Dolan, E. Pitcher and H. W. Lane. Six men have been put to work and the property is to be developed at once.

His Honor Lieutenant Governor Dewdney returned to Rossland on Wednesday after an absence of several weeks. He was accompanied by Chester Glass of Spokane.

A new firm in Rossland is that of Sereton, O'Boyle and Moberly, contractors, engineers and mining brokers. Messrs. Sereton and O'Boyle were subcontractors for a portion of the Sault Ste. Marie canal. Mr. Moberly is a well known railroad engineer.

Max Leiser, of Pithier & Leiser of Victoria, arrived in Rossland on Monday. From here he goes through the Boundary country to Penticton and thence back home. He has just made a tour of the Slovan and Kootenay lake towns where he found business booming.

E. H. Wedekind, formerly manager of the Trail smelter, has established himself as a mining engineer and metallurgical expert in Spokane. It is rumored that he is to be associated with Frederick W. North, of London and Dr. Powell of Victoria in a smelting enterprise.

Mr. Hirschel Cohen, of Johannesburg, South Africa, with Mr. St. George, his engineer, is in camp to remain permanently. Mr. Cohen was here last spring and made a close study of the camp, but did not make himself known. He was long one of the chief operators in the Transvaal and is still heavily interested there. He will make his headquarters at Rossland but his operations will extend all over British Columbia.

M. Emile Mda Marais, a mining engineer under commission from the French government, accompanied by P. E. Enders, also of France, arrived last week and is gathering material for a report. During the week he has visited the Centre Star, War Eagle, Jolie, O. K. Jumbo, Nickel Plate, Cliff, Deer Park, Crown Point, Kootenay and Columbia, Masoot, Iron Colt, Iron Horse, Great Western and Golden Chariot.

M. P. Hatch, of Buffalo, New York, arrived several days ago with Jay P. Graves and is making himself acquainted with the camp. Mr. Hatch is a broker and has a strong following at home. Like George A. Stimson of Toronto, Clarence McQuaid of Montreal and Hugo Ross, of Toronto, he feels enough interest in protecting his customers to come to Rossland and study the situation for himself.

LOCAL BREVITIES.

A. M. Grogan, of Calgary is visiting his brother, E. M. Grogan, of Rossland, who has been seriously ill but is now recovering.

Staff Capt. Southard of Spokane, will arrive Saturday and will be given a "welcome" in the salivatory way by the same evening. On Sunday afternoon a "nominating" meeting will be held under his auspices in the barracks and on Sunday evening he will conduct a special service in the vestibule of the International Hotel. He will also present the local corps with a stand of colors while in Rossland.

WILL BEGIN SHIPPING.

Nest Egg Company Orders Machinery and Is Having a Sidelack Built. The Nest Egg company has ordered of the Canadian Rand Drill company, through its Rossland agent, F. R. Mendelhall, a four-drill compressor, 20-horse power hoist, boiler, etc. This plant will be complete in every respect and will enable the company to prosecute the development of its mine more rapidly, and judging from the results of recent work, to enter the list of regular shippers.

As has been frequently stated by The Miner the dump of the Nest Egg now contains a large quantity of shipping ore. In order to move this the Columbia & Western railway will build a spur of one hundred feet long to obviate the necessity of moving it in wagons. This will also enable it to deliver the Nest Egg's machinery where it is wanted and put it in position to take away the ore as fast as the Nest Egg produces it.

TARIFF COMMISSION.

Inquiry Will Begin in Toronto Tuesday—Important Cabinet Meeting. OTTAWA, Ont., Nov. 12.—Fielding has authorized the publication of the announcement that the tariff inquiry will commence in Toronto on Tuesday next. Messrs. Cartwright, Fielding and Blair will conduct the inquiry. The ministers will remain in Toronto three days, and longer if necessary. From Toronto the ministers will go to Hamilton and London.

There is to be an important meeting of the cabinet tomorrow and Mr. Laurier has telegraphed for Mr. Fisher, and the Minister of Agriculture is expected to cut his trip in the maritime provinces short and reach here tonight or early tomorrow.

STRIKE ON THE NEVADA.

Two Feet of Fine Looking Ore Found in the Crosscut From the Shaft. Two feet of good looking ore have been found in the Nevada. The shaft started well up the hill from the west end of the claim is now down 75 feet. A crosscut was run out to the east and had gone only a short distance when the vein was encountered. The vein runs from southwest to southeast. The ore is mixed with quartz and carries a good deal of fine grained copper. Assays are being made in Spokane and The Miner is not able to report them. Work has been suspended at the mine for the present owing to the fact that no houses have been built for winter quarters.

Sale of the Robert J.

W. H. Taylor & Co. have purchased the Robert J. on the north fork of Salmon river for \$12,000. It is a silver-copper claim of high grade and belong to Frank C. Dolan, E. Pitcher and H. W. Lane. Six men have been put to work and the property is to be developed at once.

0 Each.

ident; John ie, Spokane,

nd, B. C.

DEVELOPMENT.

pany has placed an order for plant and intends to push work to its fullest capacity. ing the past summer some surface work to be able to determine favorable point for open-property.

EASURY SHARES.

shares are now for the first on sale to secure the funds for equipping the mine with 25,000 shares are to be sold per share. The next block to be at an advanced price. buy these shares will get all age of the raise and can rest at no better investment could an to hold a block of the stock erprise Company.

St. E., Toronto, Ont.

S.

pany.

00 Each.

Office.

e, Wash.

ine.

d, B. C.

okers,

IN THE TOWN LIMITS

Golden Chariot Has Two Feet of Good Grade Ore.

SHAFT IS DOWN 50 FEET

Ore Struck Has Widened Gradually all the Way—The Vein Runs Through the Alice and Derby—Is Not the Nickel Plate Ledge.

Among the many lucky mines of this wonderfully lucky camp is the Golden Chariot. The Golden Chariot is within the town limits and belongs to the Great Western company.

About three weeks ago a contract was let for sinking a shaft on the west end of the Golden Chariot. Some work had already been done there.

It was at first supposed the vein now being opened was the same as that running through the Nickel Plate, but recent investigations show conclusively that it is 250 feet south of the Nickel Plate vein.

The Golden Chariot vein was exposed in some excavation done by the Rossland Water & Light company on Nickel Plate Flat and the point where it crosses Centre Star gulch has also been established.

At a Depth of Only Five Feet Ore is Found in the Big North Ledge.

Our readers will remember that on October 23 we reported the sale of the Hattie to Montgomery Smith of Toronto for \$9,000 cash.

OLD HUNDRED SOLD.

It Took \$10,000 Cash to Buy It—Good Inside Property.

In our issue of October 30 we recorded the purchase of the Old Hundred and Wednesday mineral claims from the original locators by Messrs. Reddin & Jackson and F. J. Waker for \$7,000 cash.

LETTERS TO THE EDITOR.

The Josie Company. TORONTO, Ont., Nov. 5. Editor ROSSLAND MINER: Sir—As a shareholder in the above named mine I should like to ask through your valuable columns that we be taken into the company's confidence and some explanation given as to why the long promised dividend is still deferred.

All THE MINER said of the Josie mine is substantially true. There was no exaggeration whatever of the extent of the great ore chute opened in the east tunnel. This chute is now proved to be about 50 feet long and fully 16 feet wide.

Large consignment of Sponges, Soaps, Perfumes (all makers) received at McLead & Morrow's drug store. 10-24

H. S. Wallace's Stationery And Wall Paper Store.

JOHN A. MOODY, LONDON, ONT. Mining Stocks AND MINING BROKER.

Prospectus and Quotations Requested Weekly from all Brokers or Issuers of Treasury Stocks.

British Columbia Pottery Co., Ltd. Manufacturers of Salt Glazed Vitrified Sewer Pipes and Connections.

The McDowell, Atkins, Watson Co., Ltd. Wholesale Druggists.

We carry a full line of chemicals and assaying apparatus, quicksilver, etc. Patent medicines, drugs and druggists sundries, a full line. Mail orders promptly and carefully attended to.

The McDowell, Atkins, Watson Co., LIMITED VANCOUVER, B. C.

J. A. KIRK, P. L. S. J. B. CHANTRELL.

Kirk, Chantrell & Co., Brokers.

Mines and Stocks MINING CLAIMS SURVEYED. Lalonde's Block, Columbia Ave. Rossland.

RANKEN, 8 Mill Street, SPOKANE.

Cowper-Coles & Johnson, Mining Brokers and Agents, Real Estate, Insurance. 45 Columbia Ave, Rossland.

Good, Clark & Mills, Real Estate and Mining Brokers. Conveyancers, Commissioners, etc. MINES AND MINING STOCKS. Claims bought and sold. Companies formed. Rents collected, etc. Correspondence solicited. Columbia Ave. P. O. Box 30. Rossland.

THE MONITA. Joins the Famous War Eagle and has the Same Ledge. It is Stocked for only \$750,000 750,000 Shares. Par Value \$1.00 Each. Fully Paid and Non-Assessable. 172,000 Shares in the Treasury. 25,000 shares of the treasury stock have been placed in our hands for sale at 25 Cents per Share. We recommend this stock to our clients and the public without reservation as the best buy in Rossland mining stocks now offered. The Reddin - Jackson Co., LIMITED LIABILITY. Mining and Investment Brokers, Agents. Our Eastern Clients will please Wire their Orders.

BENHAM & GRIFFITH, Wholesale Grocers and Tobacconists, SPOKANE, WASH. Try Tiger Tea, Packed in Pound and Half Pound Papers. ROBERT DAVIES, MANAGER. WM. ROSS, CASHIER. The Dominion Brewery Co., Ltd. Brewers and Malsters. TORONTO. Manufacturers of the Celebrated WHITE LABEL ALE. ASK FOR IT AND SEE THAT OUR BRAND IS ON EVERY COKE. Our Ales and Porters have been examined by the best Analysts, and they have declared them Pure and Free from any Deleterious Ingredients. These Goods are Sold by H. I. Evans, Nelson. Suckling Bros., Rossland.

Burlington Route TO ST. LOUIS KANSAS CITY NEW SHORT LINE FROM MONTANA, IDAHO AND PUGET SOUND A. C. SHELDON, General Agent, 250 Washington St., PORTLAND, ORE.

MINING SEALS, RUBBER STAMPS, ETC Phoenix Stamp Works, With THE FAIR. Spokane, Wash. Spokane Falls & Northern Railway. Nelson & Fort Sheppard Railway. The Only Route To Trail Creek And the mineral district of the Colville Reservation, Nelson, Kaslo, Kootenay Lake and Slocan Pointe. Daily Except Sunday between SPOKANE AND NELSON. Leave Going North. Arrive Going South 11:10 P. M. NORTHPORT 12:40 P. M. Passengers for Trail Creek make connection at Northport with stages and steamer daily. Close connections at Nelson with steamers for Kaslo and all Kootenay lake points. Passengers for Kettle river and Boundary creek connect at Marcus with stage daily.

W. M. Newton, Customs Broker. Mines and Mining Stock Broker, Fire Insurance, Notary Public. Assisted by MR. EDWARD BAILLIE, Expert Accountant. 52 Columbia Ave., Rossland.

A. B. Mackenzie & Co. MINING BROKERS. Mines, Prospects and Stocks. Columbia Ave., Next Bank of Montreal, ROSSLAND, B. C. CHARGES. Silver..... 2.00 Gold..... 2.50 Gold and silver..... 2.50 Gold and copper..... 2.50 Lead..... 1.00 Nickel..... 2.00 Thirty per cent discount on samples at one time. Reports made on mines with maps and photographs. Fred M. Wells, Mine Examiner. Consulting Engineer and Secretary for the Kamloops Mining & Development Co., Ltd.

S. Norman & Co., Mining and Stock Brokers. We are prepared to handle mining propositions of real merit in Trail Creek and tributary camps. Stocks bought and sold. Weekly market letter mailed free on application. Hotel Spokane, SPOKANE, WASH.

ON A \$35,000 BASIS C. J. McCuaig of Montreal Acquires Two-Thirds of the Coxeys. THIS IS A VERY FINE PROPERTY It Lies on the West Slope of Red Mountain Adjoining the Giant and Nevada—High Grade Copper Ore on the Surface. A deal was closed this week whereby Clarence C. McCuaig of Montreal acquires a two-thirds interest in the Coxeys on the basis of \$35,000 for the entire property. The Coxeys have become well known of late owing to the favorable showings found upon it and its proximity to other properties whose values have been pretty thoroughly demonstrated. It has the Nevada on the north and the Giant on the south. On the southeast it touches the Nevada which is just now attracting much attention. The Giant, as related in THE MINER last week, has just been sold for \$100,000, the old owners retaining a fifth interest. The chief owners of the Coxeys were John R. Cook and Elling Johnson. They had so much confidence in the property that they insisted on retaining a third of it. C. J. McCuaig, who now holds the controlling interest, arrived here from Montreal two weeks ago and has been making a careful study of the camp. He has been a very successful real estate operator in Montreal and has now taken up mining. He has very strong financial backing and will organize a company at once to undertake the development of the Coxeys. Considerable work has already been done on the claim. A tunnel was started some time ago to cut a strong copper vein which showed itself on the surface, and apparently this tunnel is just now coming into the ledge. Some scattering pieces of very pretty copper ore have already been found. Perhaps the finest copper ore ever seen in the camp was found in the surface croppings of the vein to top which the tunnel is now being run. Two or three ledges have already been found on the Coxeys but the claim covers a large area and has not been carefully prospected. It would be very strange indeed if some of the many strong veins crossing Red mountain did not pass through it. It lies along the west slope of Red mountain, facing the great Jumbo and is well situated for mining operations. A wagon road just completed up to the claim can easily be extended to the present workings on the Coxeys. The sale was made chiefly on the report of J. J. Moynahan and it is not improbable he will have the control of the development work to be undertaken by the new company now in possession. IT BEATS ALL CREATION. The Horne-Payne Company Has a Prospect With \$165,000,000 in Sight. A statement of Mr. Horne-Payne which appeared recently in a Vancouver contemporary has set us to figuring. The gist of his statement was as follows: On the Alpha property, his company, the L.E.R. & C.G.F. Co., Ltd., has opened a vein which is traced for 4,000 feet and has a width of 40 feet. The filling consists of 25 feet of solid galena, three feet of grey copper and three feet of decomposed grey copper, whatever that mineral may be. The remainder of the vein is worth \$60 per ton. According to an average estimate of the value of the ore across the ledge it should be worth considerably over \$100 per ton. Allowing that this ore chute continues to a depth of 100 feet there would be above that level 1,500,000 tons of ore. This result is obtained by multiplying 4,000 x 100 and dividing by 8, which would be a fair estimate of the number of cubic feet per ton. This amount at \$100 per ton gives a gross value of \$150,000,000, and allowing \$40 per ton for mining, freight, treatment and expert's salary a net profit of \$62,000,000. We must congratulate Mr. Horne-Payne on his truly marvellous success and Mr. Jamieson on his perspicacity in finding such a mine and getting it at such a reasonable figure. (We are informed in the neighborhood of \$30,000), and quite concur with these gentlemen in their statement that it is greater than the Le Roi, War Eagle and Slocan Star put down into one. It is rather a reflection on the many other mining engineers who have seen the property that they did not think fit to purchase it. A RECIPROcity TREATY. A Grand Trunk Magnate Thinks McKinley Will Favor One With Canada. MONTREAL, Que., Nov. 11.—General Manager Hays of the Grand Trunk Railway, who has just returned from St. Louis, expresses the opinion that the next president of the United States will do his best to promote friendly relations between the United States and Canada. "I think McKinley's administration," said Mr. Hays, "will be strictly a business one and will be fully alive to any advantages to be obtained from a reciprocity treaty, and as in fact indicated in their platform they will be willing to negotiate such a treaty. It seems to me there must be many directions in which it would be mutually advantageous. Canadian farmers would have a wider market for their agricultural products, poultry, eggs, butter and cheese. American coal miners should be afforded more ready access in the interest of Canadian railroads and manufacturers, especially in Ontario, where Nova Scotia miners, owing to the long haul cannot compete even with a high protective tariff in their favor."

ON A \$35,000 BASIS

C. J. McCuaig of Montreal Acquires Two-Thirds of the Coxe.

IS A VERY FINE PROPERTY

It Lies on the West Slope of Red Mountain Adjoining the Giant and Nevada—High Grade Copper Ore on the Surface.

A deal was closed this week whereby Clarence C. McCuaig of Montreal acquires a two-thirds interest in the Coxe property. The Coxe has become well known of late owing to the favorable showings found upon it and its proximity to other properties whose values have been pretty thoroughly demonstrated.

The chief owners of the Coxe were John R. Cook and Eiling Johnson. They had so much confidence in the property that they insisted on retaining a third of it. C. J. McCuaig, who now holds the controlling interest, arrived here from Montreal two weeks ago and has been making a careful study of the property. He has been a very successful real estate operator in Montreal and has now taken up mining. He has very strong financial backing and will organize a company at once to undertake the development of the Coxe.

Considerable work has already been done on the claim. A tunnel was started some time ago to cut a strong copper vein which showed itself on the surface, and apparently this tunnel is just now coming into the ledge. Some scattering pieces of very pretty copper ore have already been found. Perhaps the finest copper ore ever seen in the camp was found in the surface croppings of the vein to tap which the tunnel is now being run.

Two or three ledges have already been found on the Coxe, but the claim covers a large area and has not been carefully prospected. It would be very strange indeed if some of the many strong veins crossing Red Mountain did not pass through it. It lies along the west slope of Red Mountain, facing the great Jumbo and is well situated for mining operations. A wagon road just completed up to the Giant can easily be extended to the present workings on the Coxe.

The sale was made chiefly on the report of J. J. Moynahan and it is not probable he will have the direction of the development work to be undertaken by the new company now in possession.

IT BEATS ALL CREATION. The Home-Payne Company Has a Prospect With \$155,000,000 in Sight.

A statement of Mr. Home-Payne which appeared recently in a Vancouver contemporary has set us to figuring. The gist of his statement was as follows: On the Alpha property, his company, the L.F.R. & C.G.F. Co., Ltd., has opened a vein which is traced for 4,000 feet and has a width of 40 feet. The filling consists of 25 feet of solid galena, three feet of grey copper and three feet of decomposed grey copper, whatever that mineral may be. The remainder of the vein is worth \$60 per ton. According to an average estimate of the value of the ore across the ledge it should be worth considerably over \$180 per ton. Allowing that this ore chicle continues to a depth of 100 feet there would be above that level 1,500,000 tons of ore. This result is obtained by multiplying 4,000 x 31 x 100 and dividing by 8, which would be a fair estimate of the number of cubic feet per ton. This amount at \$100 per ton gives a gross value of \$155,000,000, and allowing \$40 per ton for mining, freight, taxes and expert's salary a net profit of \$62,000,000. We must congratulate Mr. Home-Payne on his truly marvellous success and Mr. Jamieson on his perspicacity in finding such a mine and getting it at such a reasonable figure. We are informed in the neighborhood of \$30,000, and quite concur with these gentlemen in their statement that it is greater than the Le Roi, War Eagle and Slocan Star boiled down into one. It is rather a reflection on the many other mining engineers who have seen the property that they did not think fit to purchase it.

A RECIPROcity TREATY.

A Grand Trunk Magnate Thinks McKinley Will Favor One With Canada. MONTREAL, Que., Nov. 11.—General Manager Hays of the Grand Trunk railway, who has just returned from St. Louis, expresses the opinion that the next president of the United States will do his best to promote friendly relations between the United States and Canada. "I think McKinley's administration," said Mr. Hays, "will be strictly a business one and will be fully alive to any advantages to be obtained from a reciprocity treaty, and as in fact indicated in their platform they will be willing to negotiate such a treaty. It seems to me there must be many directions in which it would be mutually advantageous. Canadian farmers would have a wider market for their agricultural products, poultry, eggs, butter and cheese. American coal miners should be afforded more ready access in the interest of Canadian railroads and manufacturers, especially in Ontario, where Nova Scotia miners, owing to the long haul cannot compete even with a high protective tariff in their favor."

MOUNTED POLICEMAN KILLED.

Sergeant Wilde Shot by an Indian Desperado Near Macleod. CALGARY, Alberta, Nov. 11.—A despatch from Macleod, N. W. T., today says that "Charcoal" or "bad young man," the Indian who murdered another

other Indian some weeks ago, and who has since been at large defying all attempts of the mounted police to effect his capture, has committed another murder. While in pursuit of the blood-thirsty Indian murderer yesterday Sergeant Wilde, a popular member of the Pincher Creek detachment of the mounted police, was shot and killed. Large parties are out all over the south and west and if the snow holds they will be sure to run him down. Last Monday week he wounded Corporal Armour of Lee's Creek in the arm.

MANITOBA SCHOOLS.

Announcement of Settlement Postponed—Sifton's Candidacy in Brandon. WINNIPEG, Man., Nov. 11.—Attorney-General Sifton left for Brandon to-night. He will meet a committee of Liberals and give them in confidence meantime the terms of the school settlement and if these terms are satisfactory to them he will announce himself as a candidate for Brandon. It is now said public announcement of the terms will not be made before next week.

Settled at Last.

Richard Cooper, the original owner of the Nest Egg, notified us on Wednesday that the difference between him and the Nest Egg company had been finally adjusted. The Nest Egg company therefore owns a property which is fully paid for and is crown-granted as well. It will hereafter appear each week in our stock report.

Only 3,000 Left.

C. S. Butter reports that he has only 3,000 shares of Phoenix treasury stock left at 12 1/2 cents. This he expects to close out in a few days. It is the intention of the company to put a limited number of shares on at 15 cents when the above is sold out.

BANKS.

Bank of Montreal.

Capital, All Paid up, \$12,000,000 Rest 6,000,000

SIR DONALD B. SMITH, President. HON. GEO. A. DRUMMOND, Vice-President. E. S. CLOUSTON, General Manager.

Rossland Branch

London (England), New York, Chicago.

Buy and Sell Sterling Exchange and Cable Transfers. Grant Commercial and Travellers Credits available in any part of the world.

Savings Bank Branch

Rate of Interest (at present) 3 per cent.

Bank of BRITISH NORTH AMERICA.

Incorporated by Royal Charter. Paid-Up Capital \$4,866,666. Reserve Fund 1,999,999.

London Office: 3 Clements Lane, Lombard St., E.C. Court of Directors: J. Bondie, John James Cater, Gaspard Farrar, Richard H. Glyn, Henry R. Farrar, Ed. Arthur Hoare, H. J. R. Kennell, J. K. Kennedy, Frederick Lubbock, George W. Whitman.

Head Office in Canada, St. James St., Montreal. H. STRATMAN, General Manager. E. STANLEY, Inspector.

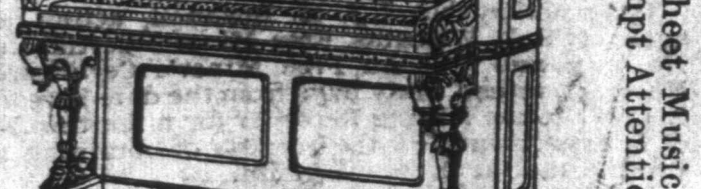
Branches in Canada: London, Bradford, Paris, Hamilton, Toronto, Kingston, Ottawa, Montreal, Quebec, St. John N. B., Brandon, Winnipeg, Man., Fredericton, N. B., Halifax, N. S., Victoria, Vancouver, Rossland, B. C.

Agents in the United States: Spokane, Traders National Bank. New York: (22 Wall Street) W. Lawson and J. C. Welch. San Francisco: (24 Sansome Street) H. M. J. McMichael and J. B. Ambrose.

London Bankers: The Bank of England and Messrs. Glyn & Co. Foreign Agents: Liverpool, Bank of Liverpool. Australia, Union Bank of Australia. New Zealand, Union Bank of Australia. Bank of New Zealand. India, China, and Japan, Chartered Mercantile Bank of India, London and China, Agra Bank, Ltd. West India, Colonial Bank, Paris, Marechal, Krauss & Co., Lyons, Credit Lyonnais.

The Joslyn Music Co'y,

817 Riverside Ave., Spokane, Wash. Pianos, Organs, and Everything Musical.



Orders for Sheet Music Received from Attention.

Wisconsin Central Line

Two Fast Trains daily between St. Paul, Minneapolis and Chicago and Milwaukee and all points in Wisconsin, making connection in Chicago with all lines running east and west. For full information regarding routes, rates, maps, folders, etc., address your nearest ticket agent, or JAMES C. POND, Gen. Pass. Agt., Milwaukee, Wis. Or GEORGE S. BATTY, Gen. Agt., 246 Stark St., Portland, Ore.

M. P. Hatch & Co.

Dealers, Promoters And Brokers in British Columbia Gold Mining Properties.

Correspondence Solicited. References: R. G. Dan & Co's Commercial Agency or Elliott Square Bank, Buffalo.

REAL ESTATE EXCHANGE BUILDING, Buffalo, N. Y.

Clarence J. McCuaig,

Mining Broker.

Stocks of Standard Mines Bought and Sold. Clough's Code. 1759 Notre Dame Street, MONTREAL.

Northern Pacific R. R.

RUNS Pullman Sleeping Cars Elegant Dining Cars Tourist Sleeping Cars

ST. PAUL, MINNEAPOLIS, DULUTH, FARGO, GRAND FORKS, CROOKSTON, WINNIPEG, HELENA and BUTTE.

Through + Tickets TO CHICAGO, WASHINGTON, PHILADELPHIA, NEW YORK, BOSTON and all Points East, West and South.

For information, time cards, maps and tickets call on or write F. D. GIBBS, General Agent, Spokane, Wash. Or A. D. CHARLTON, Asst. Gen'l Pass. Agt., Portland, Ore.

East West

The Surveyors Chain Made It THE SHORTEST Transcontinental Route

It is the most modern in equipment. It is the only line running luxurious club room cars. It is the only line serving meals on the a la carte plan. Through the GRANDEST SCENERY in America by Daylight.

Attractive tours during the season of navigation on Great Lakes via Duluth in connection with the magnificent passenger steamers Northwest and Northland.

For maps, tickets and complete information call on or address S. F. & N. Ry. agents or C. G. DIXON, General Agent, Spokane, Wash.

F. J. WHITNEY, G. P. & T. A., St. Paul, Minn.

Columbia & Western Ry.

Time Table No. 1. To take effect June 2, 1896. No. 2 passenger leaves Rossland 7:00 a. m. Arrives at Trail 7:45 a. m. No. 4 passenger leaves Rossland 3:00 p. m. Arrives at Trail 4:00 p. m. No. 6 passenger Sunday only leaves Rossland 8:30 a. m. Arrives at Trail 9:15 a. m. No. 8 passenger leaves Trail 10:30 a. m. Arrives in Rossland 11:30 a. m. No. 10 passenger Sunday only leaves Trail 11:00 a. m. Arrives in Rossland 11:45 a. m. No. 12 passenger leaves Trail 5:00 p. m. Arrives in Rossland 5:45 p. m. Connection made with all boats arriving and departing from Trail and with Spokane Falls & Northern trains via Northport.

Canadian Pacific Nav. Co.

(LIMITED) Time Table No. 28, taking effect March 1st, 1896. VANCOUVER ROUTE. Victoria to Vancouver—Daily, except Monday at 2 o'clock. Vancouver to Victoria—Daily, except Monday at 12:15 o'clock, or on arrival of C. P. R. No. 1 train.

NEW WESTMINSTER ROUTE. From Victoria for New Westminster and way landings—Sunday at 2 o'clock; Wednesday and Friday at 7 o'clock. From New Westminster to Victoria and way landings—Monday at 1:15 o'clock; Thursday and Saturday at 7 o'clock.

NORTHERN ROUTE. Steamships of this Company will leave for Port Simpson and intermediate ports via Vancouver, the 1st and 15th of each month at 8 o'clock. When sufficient inducements offer, will extend trips to West Coast points and Queen Charlotte Islands.

BARCLAY SOUND ROUTE. Steamer Maude leaves Victoria for Alberni and Sound ports the 10th, 20th and 30th of each month. The Company reserves the right of changing this Time Table at any time without notification. JOHN IRVING, Manager. G. A. CARLETON, General Agent. Victoria, July 1st.

SEE OUR QUEEN HEATING STOVES \$10 COOK STOVE TRAVERS HARDWARE CO. Columbia Ave., Rossland, B. C.

British Columbia Exploration Co., Ltd. Gold Mines and Mining Stocks. This company is organized under the laws of British Columbia and its object is to act as agent for capitalists in purchasing mines prospects and stocks; to develop good prospects into paying mines; to stock and float companies on mines so acquired; to contract for the treasury stock of good companies; and generally to act as promoter. References on application. Telegraphic and cable address: "Redmount" Rossland, B. C. Head Offices: Hart Block, Rossland, B. C.

Canadian Rand Drill Co. JENCKES' MACHINE CO. Sherbrooke, Quebec. Mining Machinery of Every Description. Air Compressors, Rock Drills, Hoisting Engines, Boilers, Mining Pumps, Concentrators, Stamp Mills, etc. Estimates and Catalogues furnished on application to J. F. TRAVERS, Rossland. Warehouse in Rossland. F. R. MENDEHALL, General Agt. for B.C., Spokane, Wash.

Sullivan Diamond Prospecting Core Drill. Diamond Drills of all Capacities from 200 to 5,000 feet Operated by Steam, Compressed Air, Electricity or Hand Power. Test Your Properties Rapidly, Accurately and Cheaply. There is no duty on Diamond Drills. SULLIVAN MACHINERY CO. MANUFACTURERS CHICAGO, ILL. Contractors for Diamond Drill Prospecting. Estimates on Diamond Drills on Contract Work Furnished on Application. Knight & Stone, Northwestern Agts. Spokane and Rossland.

The Wm. Hamilton Mfg. Co., Ltd. MINING MACHINERY Under License from EDWARD P. ALLIS Co., Milwaukee, Wis. Engines and Boilers of all Descriptions. Saw and Planing Mill Machinery. WORKS AT PETERBOROUGH, ONT. BRANCH OFFICE, VANCOUVER, B. C.

WANTED! Gold, Silver and Copper Properties to turn into Company or will Buy Outright. Will Place Whole Issues of Bonds on Electric, Steam or Horse Car Railways or Water Works. Manhattan Investors & Securities Co., Ltd. 17 and 19 Broadway, New York City.

THE NATIONAL IRON WORKS, MANUFACTURERS OF Engines, Boilers, Elevators, Architectural Iron Work, RAILWAY, MINING MACHINERY, IRON & BRASS MILL AND CASTINGS. REPAIRS A SPECIALTY. QUARTZ MILLS FROM TWO STAMPS UP. SPOKANE, WASH. We Pay the Freight. GLASS! GLASS! A COMPLETE STOCK ALWAYS ON HAND. KAAKE & WILLIAMS, Telephone 3, Trail, B. C.

Ledge. 0,000. y. ed in our. ne public g stocks. Co., gents. ms Broker. ock Broker, ary Public. port Accountant. ssland. & Co. BROKERS. d Stocks. f Montreal. . B. C. ARGES. Copper 2.00 Iron 2.50 Silver 3.00 Sulphur 3.00 Nickel 3.00 Samples at one time with maps and photos. Mine Examining. Secretary for the Kamloops Mining & Co., Ltd. Co., Brokers. of real merit in Trail and sold. Weekly publication. SPOKANE, WASH.

State of Improvements.

NOTICE. Mineral claim, situate in the Trail division of West Kootenay district. On south side of Columbia River. On south side of Columbia River. On south side of Columbia River.

State of Improvements.

NOTICE. Mineral claim, situate in the Trail division of West Kootenay district. On the west slope of Red Mountain. On the west slope of Red Mountain. On the west slope of Red Mountain.

State of Improvements.

NOTICE. Mineral claim, situate in the Trail division of West Kootenay district. On the west slope of Red Mountain. On the west slope of Red Mountain. On the west slope of Red Mountain.

State of Improvements.

NOTICE. Mineral claim, situate in the Trail division of West Kootenay district. On the west slope of Red Mountain. On the west slope of Red Mountain. On the west slope of Red Mountain.

State of Improvements.

NOTICE. Mineral claim, situate in the Trail division of West Kootenay district. On the west slope of Red Mountain. On the west slope of Red Mountain. On the west slope of Red Mountain.

State of Improvements.

NOTICE. Mineral claim, situate in the Trail division of West Kootenay district. On the west slope of Red Mountain. On the west slope of Red Mountain. On the west slope of Red Mountain.

State of Improvements.

NOTICE. Mineral claim, situate in the Trail division of West Kootenay district. On the west slope of Red Mountain. On the west slope of Red Mountain. On the west slope of Red Mountain.

State of Improvements.

NOTICE. Mineral claim, situate in the Trail division of West Kootenay district. On the west slope of Red Mountain. On the west slope of Red Mountain. On the west slope of Red Mountain.

State of Improvements.

NOTICE. Mineral claim, situate in the Trail division of West Kootenay district. On the west slope of Red Mountain. On the west slope of Red Mountain. On the west slope of Red Mountain.

State of Improvements.

NOTICE. Mineral claim, situate in the Trail division of West Kootenay district. On the west slope of Red Mountain. On the west slope of Red Mountain. On the west slope of Red Mountain.

State of Improvements.

NOTICE. Mineral claim, situate in the Trail division of West Kootenay district. On the west slope of Red Mountain. On the west slope of Red Mountain. On the west slope of Red Mountain.

State of Improvements.

NOTICE. Mineral claim, situate in the Trail division of West Kootenay district. On the west slope of Red Mountain. On the west slope of Red Mountain. On the west slope of Red Mountain.

THE FESTIVE BOARD

Mr. Clark Wallace and Other Visitors Informally Banquetted.

TOASTS AND RESPONSES

Mr. Wallace Says He Left Rossland in a Hurry on His Previous Visit to His Sorrow—H. Hirschel-Cohen Suggests a Chamber of Mines.

Mr. Clark Wallace, ex-Controller of Customs, was tendered a banquet in the Grand Union hotel, on Wednesday evening. There was nothing political in the gathering, as among those present were men of all shades of politics.

After 10 o'clock the chair was taken by J. F. McLaughlin, who was supported on the right by the guest of the evening and on the left by T. G. Blackstock. Richard Armstrong filled the vice chair, the others around the board being:

W. D. Smith, J. A. Ewan, Ed. Crony, R. L. Patterson, G. H. Sicking, W. T. Newman, W. A. Campbell, J. A. Macdonald, H. Hirschel-Cohen, A. Sibley, E. Miller, A. R. Macdonald, J. G. Ferguson, H. E. Cover, Geo. H. Sicking, T. C. Elgie, W. T. Oliver, J. A. Smith, C. W. Rae, Charles T. Long, S. W. McCaig, Frank Young, Geo. Gurd, Geo. H. Campbell, W. L. Bogan, W. L. Bogan, W. S. Weeks, Dr. Coulthard, G. B. Crony, D. B. Bogle, Dr. Boves, E. Hewitt.

The chairman welcomed the guests of the evening, and hoped the visitors among them would carry away with them most favorable impressions of the country and camp.

Dr. Boves in an eloquent speech proposed the toast "The Queen and Royal Family" which was responded to by the singing of the national anthem.

R. L. Patterson proposed the health of the country before but left hurriedly, and had been regretting it ever since.

Mr. Clark-Wallace in reply said it was a pleasure to him to see such a gathering in Rossland as it augured well for the camp. As to the future of the Kootenay country he was more than ever convinced of its immense possibilities.

As Canadians they ought to be proud of all they had accomplished in this fair Dominion; yet they would welcome their friends from over the boundary line—who came to settle here, and help to develop the resources of Canada.

In eastern Canada it was estimated that the farmer got but one cent per pound for his wheat, while here in British Columbia the rock was worth three cents per pound. He had been in this part of the country before but left hurriedly, and had been regretting it ever since.

"The Banks" was proposed by the chairman and was responded to by W. T. Oliver, manager of the Bank of B.N.A.

"The Mining Interests" was coupled with the name of Mr. Hirschel-Cohen at Johannesburg. Mr. Hirschel-Cohen in replying spoke of the great prospects of the Kootenay country and Rossland, its capital, and urged the formation here of a chamber of mines.

From such a chamber, formed of sound business men reliable information would be dispersed to the benefit of the camp and the country.

Col. Rae of Port Arthur also spoke of the favorable impressions this company had made upon him, and predicted good things for Slokan also.

Mr. Armstrong made a very witty speech, and prophesied that with capital coming in and the ore from the mines going out Rossland would yet be a great city.

"The Future of Rossland" was received with enthusiasm, and among the first to respond to it was Mr. Blackstock of Toronto. He pointed out that what was really required to develop this country was cheap transportation—and this they did not enjoy. In future it was desirable that the government in granting charters to railway companies should see that the freight and passenger rates were under government control and also that the railroads were not handed over all the good land of the country.

Yours truly, X. Y. Z.

We beg to draw the attention of X. Y. Z. to the fact that we do not evolve the stock quotations from our own inner consciousness. They are furnished us weekly by the Reddin-Jackson company. Like X. Y. Z. we were considerably astonished when the Toronto papers came to hand advertising View stock for sale at 10 cents.

We immediately asked Messrs. Reddin & Jackson for an explanation. They informed us that D. M. Linnard, who controlled the majority of the View stock, had advised them that the stock would be put on at 20 cents. The fixing of the price at which treasury stock will be offered to the public lies entirely with the management of the company.

If the public thinks the price too high they do not buy it and the promoters either have to buy it themselves or reduce the price. Relying on Mr. Linnard's statement and at his specific request, if we are not mistaken, Messrs. Reddin & Jackson quoted the stock at 20 cents. We trust that no one has been induced to buy View stock at a higher figure than 10 cents and we shall be careful in future to quote no stock until it is actually in the hands of a broker for sale at the price stated in our report.

The Poorman Company. ROSSLAND, B. C. Nov. 9, 1896.

Editor ROSSLAND MINER.—Sir: In reading over last week's issue I see you complied with J. A. Finch's request, re-examining the Poorman books. Your auditor it is stated made a careful examination of the books. Are the shareholders to understand from your report that not one cent of the treasury stock that was utilized from the thousands of shares sold in the spring has been spent towards the development of the Poorman mine? Yes, not even an entry of the proceeds made in the books. Can

Or anything in General Dry Goods or Gents' Furnishings

White House

Has them.

The Great...

FRUIT AND MINERAL FAIR

Opens Oct. 6...

Come direct to our store to be clothed; our place will be headquarters for visitors. Our Big Double Store is filled with everything in Men and Boy's Wear for fall and winter. We will make a special discount to everybody who buys of us during the Fruit Fair, and any information regarding hotels and rooms will be cheerfully given by us.

We Sell...

Happy Home

ALL WOOL SUITS The Best Goods on Earth for \$7.50, \$10.00, \$12.50 and \$15.00.

Boy's and Children's Suits from \$1 up. Men's Heavy Underwear, 50c. up.

Positively the best goods on earth for the money. If you cannot come to the city write for our sample card which will show you many desirable styles, mailed free on application with rules of self-measurement. We are the largest men and boys' outfitters in Spokane; have but one price and deal honorably with all. We believe in large sales and small profits and always keep a large stock of stylish goods to select from. Please remember us when you need anything in our line and when you come to our city make our store your headquarters.

Dr. Boves in an eloquent speech proposed the toast "The Queen and Royal Family" which was responded to by the singing of the national anthem.

R. L. Patterson proposed the health of the country before but left hurriedly, and had been regretting it ever since.

Mr. Clark-Wallace in reply said it was a pleasure to him to see such a gathering in Rossland as it augured well for the camp. As to the future of the Kootenay country he was more than ever convinced of its immense possibilities.

As Canadians they ought to be proud of all they had accomplished in this fair Dominion; yet they would welcome their friends from over the boundary line—who came to settle here, and help to develop the resources of Canada.

In eastern Canada it was estimated that the farmer got but one cent per pound for his wheat, while here in British Columbia the rock was worth three cents per pound. He had been in this part of the country before but left hurriedly, and had been regretting it ever since.

"The Banks" was proposed by the chairman and was responded to by W. T. Oliver, manager of the Bank of B.N.A.

"The Mining Interests" was coupled with the name of Mr. Hirschel-Cohen at Johannesburg. Mr. Hirschel-Cohen in replying spoke of the great prospects of the Kootenay country and Rossland, its capital, and urged the formation here of a chamber of mines.

From such a chamber, formed of sound business men reliable information would be dispersed to the benefit of the camp and the country.

Col. Rae of Port Arthur also spoke of the favorable impressions this company had made upon him, and predicted good things for Slokan also.

Mr. Armstrong made a very witty speech, and prophesied that with capital coming in and the ore from the mines going out Rossland would yet be a great city.

"The Future of Rossland" was received with enthusiasm, and among the first to respond to it was Mr. Blackstock of Toronto. He pointed out that what was really required to develop this country was cheap transportation—and this they did not enjoy. In future it was desirable that the government in granting charters to railway companies should see that the freight and passenger rates were under government control and also that the railroads were not handed over all the good land of the country.

Yours truly, X. Y. Z.

We beg to draw the attention of X. Y. Z. to the fact that we do not evolve the stock quotations from our own inner consciousness. They are furnished us weekly by the Reddin-Jackson company. Like X. Y. Z. we were considerably astonished when the Toronto papers came to hand advertising View stock for sale at 10 cents.

We immediately asked Messrs. Reddin & Jackson for an explanation. They informed us that D. M. Linnard, who controlled the majority of the View stock, had advised them that the stock would be put on at 20 cents. The fixing of the price at which treasury stock will be offered to the public lies entirely with the management of the company.

If the public thinks the price too high they do not buy it and the promoters either have to buy it themselves or reduce the price. Relying on Mr. Linnard's statement and at his specific request, if we are not mistaken, Messrs. Reddin & Jackson quoted the stock at 20 cents. We trust that no one has been induced to buy View stock at a higher figure than 10 cents and we shall be careful in future to quote no stock until it is actually in the hands of a broker for sale at the price stated in our report.

The Poorman Company. ROSSLAND, B. C. Nov. 9, 1896.

Editor ROSSLAND MINER.—Sir: In reading over last week's issue I see you complied with J. A. Finch's request, re-examining the Poorman books. Your auditor it is stated made a careful examination of the books. Are the shareholders to understand from your report that not one cent of the treasury stock that was utilized from the thousands of shares sold in the spring has been spent towards the development of the Poorman mine? Yes, not even an entry of the proceeds made in the books. Can

Or anything in General Dry Goods or Gents' Furnishings

White House

Has them.

Iron Colt

The Second issue of Iron Colt Treasury Shares consisting of 25,000 shares having been taken, a third issue, consisting of 25,000 Treasury shares is offered at the price of

=18= CENTS PER SHARE.

Moynahan & Campbell

ROSSLAND, B. C.

PROFESSIONAL CARDS.

BERNARD MARTIN, Barrister at Law, 43 Government St., VICTORIA, B. C.

A. T. MONTEITH, MINING BROKER. Stocks bought and sold on commission. ROSSLAND, B. C.

A. W. MORE & CO., Mining Brokers, On Victoria Stock Exchange. Office: 70 Douglas St., VICTORIA, B. C.

BEAUMONT BOGGS, Notary Public and Commissioner for Nova Scotia. Mining Broker and Financial Agent. Correspondence with Prospectors and Investors invited. A. B. C. or Clough's Code. Cable Address: "Beas" Victoria. VICTORIA, B. C.

BUSHNELL & HILL, Civil Engineers and Provincial Land Surveyors. Office: Over Fraser's Drug Store, Columbia Ave. ROSSLAND, B. C.

you answer what has become of the money from the sale of the stock in the spring. If the managers of the mine put the money in their own pockets I think the press ought to warn outsiders from investing in stocks whose companies are incorporated under the laws of the United States. The Poorman stock, I believe was sold as non-assessable? Can this practice be allowed for companies to sell stock as non-assessable and do whatever they wish with the proceeds and then when the funds are not able to comply with the demands of expenses, turn round and call a meeting of directors and assess the stockholders? If your editor can enlighten shareholders on any of the questions asked, you would be doing a good favor to me. Your servant, W. H. DRENY.

Poorman stock was issued as assessable stock and sold as assessable stock. If any broker represented it to any customer as non-assessable he stated what was not true. Being assessable stock there never was any stock set aside in the treasury. The stock which was sold last spring, or at any other time, was proprietary stock, and the proceeds belonged to the individual owner of the stock. The Poorman company never had a certain treasury, because until a few days ago it had never levied any assessments on its shares. If the stock had been issued as non-assessable stock no assessment could have been levied by the board of directors.

E. S. Topping's Report. TRAIL, B. C., September 12, 1896.

"In answer to yours of the 3rd Sept. re Red Point claim, will say that there are three veins or ore bodies on the claim, one of which has a width in eight of six feet, one of probably four feet, and one of about twenty inches. Two

DR. H. G. MAUZEY,

Oculist and Aurist. Oculist for Great Northern and O. R. N. Railways. Hyde Block, SPOKANE.

FORIN & FORIN, BARRISTERS, SOLICITORS, ETC. Inns of Court, Vancouver, B. C. Columbia Avenue, Rossland, B. C.

H. L. HIME & CO., (Members Toronto Stock Exchange) Stock Brokers and Financial Agents. Mining Stocks Bought and Sold on Commission. Correspondence Solicited. 15 Toronto St., TORONTO, ONT., CANADA.

J. B. FERGUSON & CO., Mining Properties. STOCKS AND REAL ESTATE. Next Door to Bank of B. N. A. ROSSLAND, B. C.

JOSEPH L. WARNER, Engineer of Mines. Expert Examinations and Reports. General Supervision of Mining Development Work. 503 Traders Block, SPOKANE, WASH.

J. K. OLARK & CO., MINES AND MINING. Correspondence Solicited. ROSSLAND, B. C.

J. L. PARKER, Consulting Mining Engineer. Mines Examined and Reported on. General Supervision of Mines Attended to. Office over Weeks & Wright, Columbia Avenue, ROSSLAND, B. C.

WALTER C. ARCHER, Mining Agent and Stock Broker. Quotations on all Stocks by Letter or Wire. Lalonde & Rodier Bldg., ROSSLAND, B. C. P. O. Box 246.

W. M. E. DEVEREUX, Civil Engineer, Provincial Land Surveyor and Notary Public. Office over Weeks & Wright, Columbia Ave. ROSSLAND, B. C.

W. J. G. DICKSON, Mines, Mining & Real Estate Broker, General Produce Commission Agent. Bealey Block, NELSON, B. C.

W. M. HENDRICKSON, M. D. (New York) Physician, Surgeon, Accoucheur. Late Surgeon U. S. Vols. Late A. A. Surgeon, U. S. A. Late Surgeon Workingman's Hospital, Butte, Montana. Office: Stussi Block, ROSSLAND, B. C.

The Red Point Gold Mining Co., Ltd. Ly. 107 Rossland, British Columbia. Capital Stock \$1,000,000. Shares \$1.00 Par Value. TREASURY STOCK 300,000. All stock fully Paid Up and Non-Assessable.

OFFICERS AND PROVISIONAL DIRECTORS.—J. K. Clark, President; J. Fred Ritchie, D. L. S., Vice-President; P. G. Nash, Secretary-Treasurer; George P. Brophy, O. E.; Sanford H. Fleming, O. E.; John W. McRae; W. A. Allen; Hector McRae of Ottawa; Wm. McNally of Montreal and Harold Kennedy of Quebec.

Mine: The Red Point on Lookout Mountain in the Trail Creek Mining District.

Position and Size. The Red Point claim was the first location made on Lookout Mountain and lies between St. Charles, Debs, and Sovereign, on the one side, the Imperial, K. of L., Wolverine, Occidental and St. Croix on the other. The property has been paid for and surveyed. The size of the property is 1500 by 1600 feet the full size claimed. The citizens of Trail city have contributed a fund for the building of a wagon road from the town up Lookout Mountain to connect with the mines. About \$5,500 worth of development work has been done and a contract has been awarded for a 300-foot tunnel.

J. K. Clark's Report. "I have made a careful examination of the Red Point mineral claim situated on Lookout Mountain and beg to submit the following report: "The ore deposits occur in the form of three parallel veins as shown by the outcrop which is large and well defined, and can be traced nearly the entire length of the claim, the trend or strike being in an easterly and westerly direction. The width of the veins of unusual thickness, the croppings in several places being over 50 feet in width.

"The vein matter or matrix consists of large masses of oxidized iron, interspersed with streaks of arsenical iron on the surface, carrying small gold values with a percentage of copper. At a depth of a few feet, as shown by the limited development work done, the oxidized ore changes to a sulphide, carrying iron pyrites, arsenical iron, copper sulphides and chalcopyrites of copper, and greater values in both gold and copper. These features are characteristic of the principal mines of the district where pay values are not expected at the surface. The development work consists of several open cuts from five to ten feet in depth and in each of the openings a fair showing of ore is exposed."

Treasury Shares. The owners having tested the property by considerable surface work, opening up and exploring the ledges, and with borings with their diamond drill, and fully satisfied that the Red Point will make a shipping mine when opened up by a tunnel to crosscut the four ledges 200 feet from the surface, now offer One-Half of the Treasury Stock—150,000 shares—to the public. The balance of the treasury stock will be placed in the market later on at an advanced price.

Shares are now offered at 10 cents in blocks of not less than 500. Subscription books are now open at the company's office, Rossland B. C. P. G. NASH, Sect.-Treas.

Dress Goods.



FOR THE Best assortment in Dress Goods. Finest line of blankets. Largest stock of clothing. Best values in hats. Latest in neckwear. Choicest assortment of carpets. Newest styles in shoes and the

Lowest Prices

VISIT THE Crescent Dry Goods Co., Ltd. Ly. Columbia Avenue, Rossland, B. C. Carpets, Oil Cloths, Linoleums

New Arrivals at Challoner, Mitchell & Spring's

DIAMONDS weighing from 1/4 to 3/4 carats each. CLOCKS Nickel alarm. One case. RINGS. Some very pretty designs. LONG CHAINS in Gold and Rolled Plate.

Look at our stock of Diamonds and order your holiday goods made to order. Challoner, Mitchell & Spring, Watchmakers and Jewelers. East of Post Office, Columbia Ave.

A Modern Convenience.

The Large Department Store of the older cities of the country is considered to be the handiest method for retailing goods yet devised. What the Department Store is to the large cities, our store is to Rossland. Our stock of Groceries, Dry Goods, Clothing, Boots and Shoes, Gents' Furnishings, Hardware, Tinware, etc., forms a Department Store in every sense of the term.

Hunter Bros., General Merchants, Rossland.

of these veins have been traced for several hundred feet on the surface. Of assays I have taken but two, one tested by F. Pellow Harvey ran \$73 gold, one from the present tunnel run with a local assayer \$6 gold. In 1894, I took a piece of the croppings, and after crushing and washing it found gold to the value of \$50 and upwards per ton. I have always thought highly of the property. There is sufficient spring water on the ground to supply any works that may be devised. The country about is fairly timbered, and the fuel supply need not be considered for many years."

T. H. Finnegan's Report. "The vein the shaft is in is about 20 feet wide, and is traceable for about 600 feet, and no doubt can be traced further by removing the top soil. The shaft is down about 12 feet. We had ore to start on, but it improved in quantity and quality as depth was attained. I did not consider it economy to continue the shaft, as we had decided to leave it to the decision of the diamond drill. I think the next best showing is the big cropping up the hill, where the \$87 assay was taken from. There is still another good showing over northwest of the discovery line. It is a remarkably good showing. The fact of the Sovereign passing from a prospect to a mine, would in my estimation enhance the value of the Red Point 100 per cent. I have conversed with several mining men in regard to it, and they all agree that the surface showing of the Red Point is as promising as that of the Jogie, Le Roi and War Eagle.

Treasury Shares. The owners having tested the property by considerable surface work, opening up and exploring the ledges, and with borings with their diamond drill, and fully satisfied that the Red Point will make a shipping mine when opened up by a tunnel to crosscut the four ledges 200 feet from the surface, now offer One-Half of the Treasury Stock—150,000 shares—to the public. The balance of the treasury stock will be placed in the market later on at an advanced price.

Shares are now offered at 10 cents in blocks of not less than 500. Subscription books are now open at the company's office, Rossland B. C. P. G. NASH, Sect.-Treas.

Boots and Shoes and Gents' Furnishings.

CHURCH ROW IS OVER

Kaslo's Citizens Seem Disposed to Let the Matter Drop.

A WATERWORKS SYSTEM

Work is Being Energetically Pushed—A New Electric Lighting By-Law Proposed—Mines on the South Fork of Kaslo Creek—Local Notes.

KASLO, B.C., Nov. 10.—(Special correspondence.)—The city's waterworks system is being energetically pushed by Engineer Cummings, who is also acting as superintendent of construction. The impending reservoir is nearly complete. The concrete has been laid, and is an excellent piece of work. It now needs a covering of asphaltum, the material for which is on the ground. The trenches for the stave pipe are being dug as rapidly as possible and will be ready for the stave pipe as soon as they can be put together. Everything points to a well planned and efficient supply of fine water of which the city has stood in dire need.

George E. White, well known in Kaslo, was arrested in Nanaimo on Monday upon the strength of a warrant issued by Justice of the Peace Stone. He is charged with leaving the country with the fraudulent intent of cheating his creditors. He came back to Kaslo the same evening and was released from custody upon giving the required security. The hearing is set down for Thursday next, when he promises to make it lively for those who interfered with his liberty. He claims to have arranged for the payment of his creditors before leaving town.

The new owners of the Ruth mines, with the McVeys, who retained their holdings, are preparing for an active winter's work and will ship largely. They are not at all discouraged by the apparent defeat of the either party in the United States, but will go right ahead. They have one of the best properties in the Slokan district.

The city council has before it another proposition for the installation of an electric light plant, which will be considered as soon as the legal time has expired after the defeat of the late by-law, and the necessary petition from a sufficient number of the taxpayers has been received. It is not unlikely that a new by-law will be submitted to the people, although it seems to have some objectionable features, such as street lighting by incandescents rather than arc lights. It is said that negotiations are pending for the sale of one of the most promising properties in the Slokan district, from which almost phenomenal returns have been received.

The South Fork of Kaslo Creek is receiving a good deal of attention at the present time. Some Swedes are said to be developing a large vein of rich ore upon a claim which they recorded during the past summer. Other claims in the same locality are said to be very promising. On Monday the locality was visited by the representatives of some Toronto capitalists who have been seeking investments in the Kootenays for some time, and already have some fine properties in the Roseland district. The church row has apparently subsided, and both sides seem to be resting upon their laurels. No further action has been taken by either party to the unpleasant squabble, and nothing is heard of it save from a few of the malcontents who seem anxious to justify their somewhat drastic action.

Improvement in the order of the day in the city, and building still continues active. The Geigerich-Beyer building is being fitted up and will present a very handsome appearance when completed. Other buildings are also a forward state. The new hotel of Cooke and north is completed and is being furnished. The proprietors purpose to have a house warming on the 19th instant, to which a number of their friends will be invited, and dancing will be the order of the evening.

It is said that ore shipments from the Slokan mines will be larger during the present winter than ever before, and the number of shipping properties will be greater. The Kaslo and Slokan railway is making preparations to handle its part of the output with the least possible delay. A rotary snow plow is being imported and when necessary the cuttings will be widened for its use. A new and powerful engine will be provided so as to make the plow effective. Other improvements are also being made along the line.

The steamer International of the International Trading and Navigation company, is now practically completed, and will go into service in a few days. She is now being furnished and provisioned. There is undoubtedly a good deal of feeling manifested as to the comparative speed of the new steamer and the flyer Nokanee, of the C. & K. Navigation company, but it is unlikely that there will be any set and prearranged races between the two. Should they accidentally come together, however, each will undoubtedly strive to outrun its rival.

The new building on the corner of A avenue and Fourth street, now approaching completion, will be used as a proprietary club house, under the management of Messrs. Trumbull & Behrman, who are well adapted for the work. This is the first institution of the kind to be established in the city and the proprietors are already assured of a large patronage. The rooms will be neatly furnished and made very comfortable.

It is the intention of the publishers of the Kootenain to place a new cylinder press in the immediate future, and thus round out the plant of a well appointed and up-to-date job and newspaper office. The paper is in a flourishing condition.

PALO ALTO'S STRIKE.
The Shaft Shows 8 to 10 Inches of \$30 Ore in a 4-Foot Ledge.
A very important strike has been made on the Palo Alto. There are now from eight to ten inches of ore in the shaft which is of good shipping grade. This ore was encountered Tuesday evening and assays made Wednesday showed \$24.80 and \$35.20 in gold. This leaves no

doubt as to the nature of the ore. The shaft is now down 72 feet and the ore is on the hanging wall. The ledge is about four feet wide, the filling being about four feet of gangue, which is now going out and giving place to clean ore.
The Palo Alto has had some ore from near the surface which carried high values in gold, but this ore has never before appeared in a solid, compact mass. There is every reason to believe this good ore has come to stay and that there will soon be plenty of it.

TRAIL NEWS NOTES.

The engines and boilers for the Trail smelter are now due, having passed through Whatcom, Wash., en route over the C. P. R. a week ago last Tuesday. The new rolling stock for the Columbia & Western railway is at Northport with the exception of some freight cars which were brought up to Trail during the week. On Sunday two steamers and a barge will go down to Northport and an effort will be made to bring up all the rest of the outfit at once. Besides a large number of freight cars there are two passenger coaches and an engine. The latter are needed worse than the freight cars.
On Wednesday the cable was stretched over the Columbia river at Trail and the ferry is once more in running order.

Turner, Beeton & Co.
Wholesale Merchants, Shippers, and Importers.
Victoria, B. C., London, Eng.
Kootenay Branch, NELSON, B. C.

Wines, Liquors and Cigars. Granby Rubber Boots, General Dry Goods, Ort Bags, etc., etc. Portland Cement, Fire Clay, Drain Pipe. All in Stock at Nelson.

North Fork
No Section of the Trail Creek District is Attracting More Attention at Present.

Splendid Openings For Capital.
Situated on the Main Line of the Spokane Falls & Northern Railway. Good Trail to the Mines. First Class Hotel. Saddle and Pack Horses for Hire.

MERSEY HOUSE
MARC GILLIAM, Prop.
North Fork, B. C.
Address all Communications: NORTH FORK, VIA WANETA, B. C.

O. R. & N.
To Clear Alene Mines. To Baker City Mining District. To Portland and San Francisco via Steamer.

The O. R. & N. from Spokane forms the shortest and low rate line.
For rates and information, address
J. CAMPBELL, GEN'L AGENT,
504 Riverside Ave., Spokane.
W. H. HULLBURT, GEN. PASS. AGT.,
Portland, Ore.
E. McNEIL, PRES. AND GEN. MGR.,
Spokane, Wash.

Kaslo & Slokan Railway
TIME CARD NO. 1.

GOING WEST.	Daily.	GOING EAST.
Leave 8:00 a. m.	Kaslo	Arrive 3:30 p. m.
" 8:30 "	South Fork	" 3:15 "
" 9:30 "	Spruille "	" 2:15 "
" 10:30 "	Whitewater "	" 2:00 "
" 10:30 "	Bear Lake "	" 1:45 "
" 10:30 "	McClugan "	" 1:30 "
" 10:30 "	Sailey "	" 1:15 "
" 10:30 "	Junction "	" 1:00 "
" 10:30 "	Sandton "	" 1:00 "
Arr. "	" "	Leave 1:00 "

Subject to change without notice.
For rates and information apply at the company's offices.
ROBT. IRVING, Traffic Manager.
R. W. BRYAN, Superintendent.

Canadian Pacific Railway.
SOO PACIFIC ROUTE.
The cheapest, most comfortable and direct route from
ROSSLAND, KASLO, NELSON AND ALL KOOTENAY POINTS.

Through Tickets to and from the Pacific Coast to Eastern and European Points.
Equipment unsurpassed, combining palatial dining and sleeping cars, luxurious day-coaches, tourist and free colonist sleeping cars run on all trains.

For information as to time, rates, etc., apply to
A. B. MACKENZIE & Co., Roseland,
H. E. MACDONALD, Nelson, or
Geo. MCL. BROWN, Dist. Pass. Agt.,
Vancouver, B. C.

THE CANADIAN GOLD FIELDS SYNDICATE, LIMITED.

An Investment Syndicate

Combining security, substantial worth and the lowest possible percentage of risk with the greatest practicable margin of profit is now in process of organization.

Object.
Briefly stated the syndicate will prospect for and acquire by discovery, location, lease, or purchase valuable mineral deposits throughout the province of British Columbia with power to extend its operations at will, exploring, developing, equipping, operating, incorporating, bonding, leasing, selling and otherwise dealing in and disposing of mines and mine products; mining, ore working and transporting, machinery, appliances and equipment; also in the shares, debentures and other securities of mining companies—for profit.

Capitalization.
The capital stock of the Canadian Gold Fields Syndicate, (Limited) will be divided into ten million (10,000,000) shares, par value ten cents each, in blocks of not less than five hundred shares, all of which will belong to the treasury; these shares will only be issued as required for the syndicate's working capital and dividends will be paid only upon the shares issued. Thus if one million shares be sold that number will stand for the active stock, the remaining nine million shares being an available reserve in the treasury to enable successful accomplishment of any business operation worthy of the syndicate's consideration.

Immediate Undertakings.
The organizers, who have been uniformly successful in selecting meritorious mining properties in the great Trail Creek gold-copper belt, have now under development the most promising group of high grade mines in the Roseland camp, and have also under offer several valuable properties in the Nelson district, adjacent to the Hall Mines and in the great Slokan at very low prices.

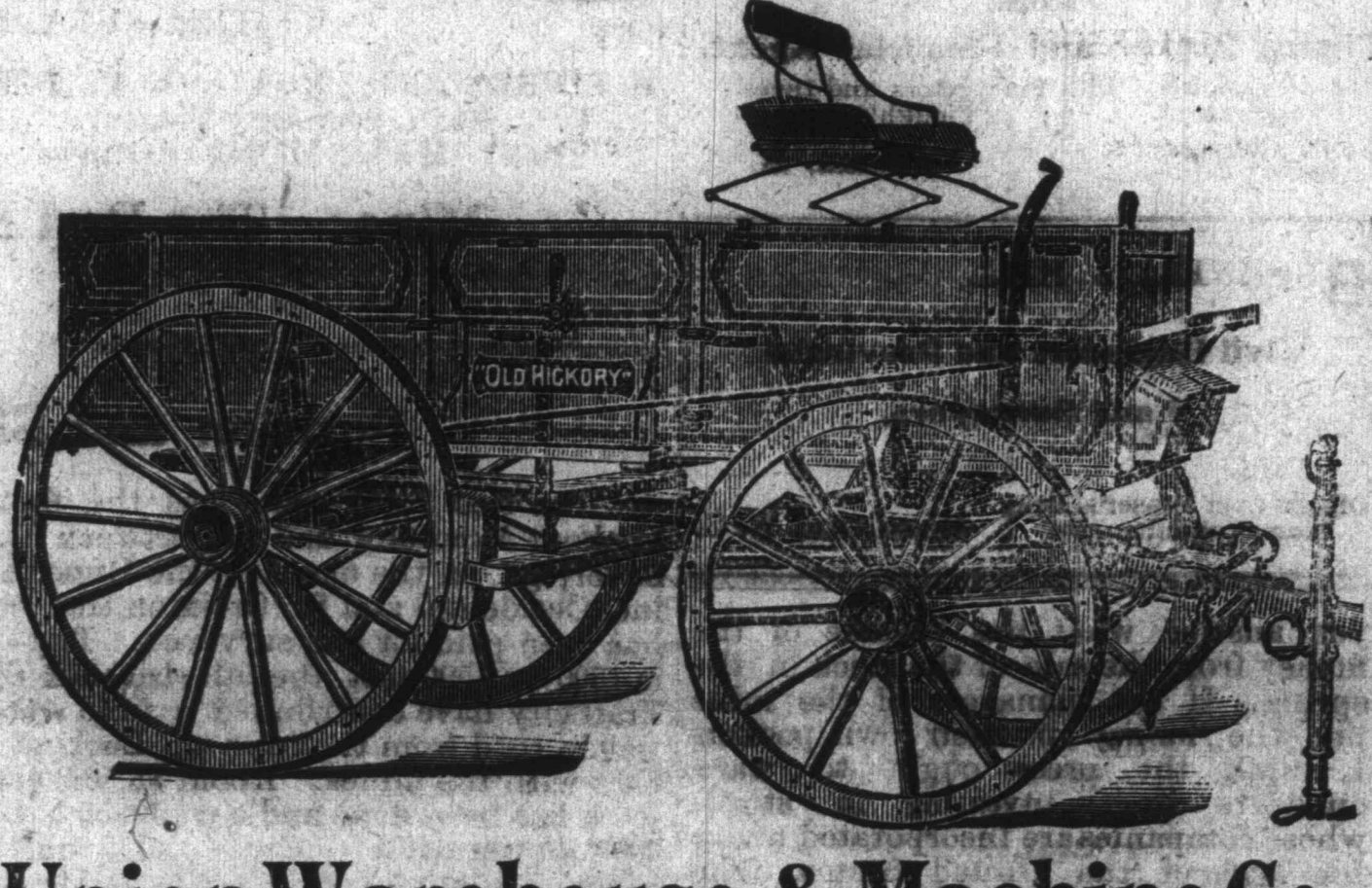
Personal Liability Effectually Removed.
As some doubt exists as to the liability attaching to one dollar shares sold below the par value, the organizers have decided to place the matter beyond question by issuing the syndicate shares at the par value of ten cents each, and selling them at not less than par.

Substantial Endorsement.
The advance announcement of intention to organize the CANADIAN GOLD FIELDS SYNDICATE, (Limited) appeared October 30, 1896, in The Roseland Miner.

First Allotment.
The organizers invite subscriptions for the first issue of one million of the fully paid, non-assessable syndicate shares at ten cents per share. Allotment will be made in the order in which applications are received. No application will be entertained for less than five hundred shares. The right is reserved, under the present offering, to withdraw the syndicate shares from sale without notice.

The Walters Company,
General Mining Brokers.
Address: The Walters Company, ROSSLAND, B. C.

Thos. Dunn & Co.
LIMITED LIABILITY
Vancouver, B. C.
Special Agents on the coast for
JESSUP'S DRILL STEEL
Importers of
BAR IRON, STEEL AND WIRE ROPE
We are Headquarters for
Miners' Supplies
Washo Drifting Picks, Shovels, Drilling Hammers, Bolts, Washers, Nuts, and Tackle Blocks.
WRITE FOR QUOTATIONS.



Union Warehouse & Machine Co.,
Manufacturers' Agents for
Farm and Freight Wagons, Vehicles and Agricultural Implements of All Kinds.
SEND FOR OUR CATALOGUE, MAILED FREE ON APPLICATION.
Spokane, Washington.

B. C. Mills Timber & Trading Co.
Manufacturers of
Doors, Windows, Mouldings, Shingles, Lumber, & Stair Work a Specialty.
P. O. Box 63. Kootenay Yard, ROSSLAND
G. F. UPHAM, AGENT.

J. P. Martin & Co.,
GROCERIES AND PROVISIONS
Free Delivery to any Part of the Town.
OPPOSITE HOSPITAL, COLUMBIA AVE., ROSSLAND, B. C.

Why Not
Get the Best for the Least Money?
I X L Clothing
FILLS THE BILL.
We carry a full line of Men's, Youth's and Children's Clothing, Hats, Caps, Furnishing Goods, Boots and Shoes. New, fresh and stylish goods at satisfactory prices.
IXL Clothing Co.,
509-13 Riverside Ave.
512 Sprague Ave.
Spokane, Wash.

Established 1862.
WEILER & BROS.,
Furniture Manufacturers and Importers
Carpets, Curtains, Linoleums, Wall Paper, Crockery, Glassware, Cutlery, Lamps, Bar Goods, Complete House Furnishings.
Victoria, B. C.
Largest stock west of Toronto.
Hotels furnished complete at short notice.
Counters, mirrors and complete bar outfits made to order.
Bank and office fixtures, desks, etc.
Write to us for prices and samples or call on
W. J. TWISS, KASLO,
Our Kootenay Agent.

SMOKELESS POWDER RIFLE CARTRIDGES.
WE CARRY A FULL LINE OF WINCHESTER AND MARLIN RIFLES, And a Well Selected Line of Fixed Ammunition.
We Cater to the Sportsmen, and Guarantee Satisfaction. We have a good line of all Sporting Goods.
Ware Bros' Gun Store, Spokane, Wash.

SOME SLOCAN SALES

Dan McGillivray Reported to Have Bonded the Lilly B.

PRICE SAID TO BE \$60,000

Neighboring Property Going for \$40,000—Magnificent Showings of Ore in Slokan Star and Galens Farm. Three Forks Mill Making a Record.

SANDON, B. C., Nov. 9.—(Special Correspondence.)—The ironwork for the aerial tramway of the Noble Five company is now all on the ground. As soon as the wire rope arrives and is strung which ought to be very soon, the mine will begin sending down ore to the mill.

The lower workings of the Slokan Star are a sight for sore eyes. There is a breast of ore 30 feet wide in one drift. Work in the mine has been delayed owing to the non-arrival of machinery ordered a long time ago.
Byron White the president of the Slokan Star company has just returned from a trip through the Rainy Lake mining district of Ontario. He speaks very highly of it saying he considers it one of the most promising gold fields on the continent.

It is reported here that the Lilly B., a claim in the dry ore belt at the south end of Slokan lake has been bonded for \$60,000 by Dan McGillivray, the well known railroad contractor. It is generally thought to be one of the best and most promising properties in that section. Another property in the same vicinity is about to change hands for \$40,000 the purchasers being a syndicate of Eastern Canadian capitalists.

There are two steamers now plying on Slokan lake and it is said a third and much larger steamboat will soon be put on by the C. P. R.

News from Three Forks is very satisfactory. The Slokan Milling company's concentrator has been running for several weeks past and it is claimed the net receipts now exceed \$900 per day.
D. J. McDonald, superintendent of the Currie claims, better known as the Pakana Farm, has begun work on a peculiar three-compartment working shaft. This shaft will be put down to the 500-foot level and crosscuts to the vein will be run every 100 feet. A large hoisting and pumping plant has been ordered by C. W. Callahan from the Ingersoll-Sergeant Drill company of Montreal and it is said a 150-ton concentrator will be ordered during the winter. A Bleichert tramway will be put in during the winter and a good wagon road from the mine to Silverton has just been completed. The showing in the workings is magnificent and for the amount of development exceeds anything in the Slokan. The drifts show 10 to 14 feet of ore, much of which is solid and all of which will make rich concentrates at about the ratio of four tons to one.

SANDON MINING NOTES.

SANDON, B. C., November 5.—(Special Correspondence.)—Leighton & Williams have bought the Black Hills mine on the south side of Kaslo creek ten miles from Kaslo and they have begun work on it. There are from two to four feet of a quartz lead, assays from the surface of which yield 40 to 167 ounces of silver to the ton with a trace of gold.
About seventy men are working on the road from the Payne mine. Work was begun on the upper end and they expect to reach this place in about a week.

The Noble Five Consolidated Mining & Milling company is working about 100 men. The concentrator building is almost completed but the machinery has not yet arrived.
The Argo is being worked, sinking on the vein.
The Slokan Queen expects to strike the lead in three or four days.
The Victoria people have about six inches of concentrating ore that runs very high in silver.

Roseland Club Organized.
On Tuesday evening about 50 of the leading business men of Roseland met and organized the Roseland club. C. W. Callahan was elected chairman of the meeting. J. S. C. Fraser, manager of the Bank of Montreal was chosen president and a committee of three was appointed to take charge of fitting up the club rooms which will occupy the second floor of Dr. Keller's new block. It is intended to do the thing up in style and the Roseland club expects to deserve the same of being the most handsomely equipped in Kootenay.

EAST KOOTENAY NEWS.

Fort Steele Prospector. It having been intimated to the people of Fort Steele that their weekly mail service is to be reduced to a semi-monthly mail, a mass meeting was held and a committee appointed to draft a petition to the postmaster general setting forth that it is absolutely necessary to the increased business and prosperity of Fort Steele that the weekly mail service be continued and that the round trip be made in seven days.

The Nip & Tuck company, engaged in placer mining on Wild Horse creek has made a partial clean up. We are unable to get at the exact amount of gold taken out, but from good authority it is said that 25 per cent of the total amount invested upon the property was obtained during the past season.

On Perry creek there are a large number of men at work, new locations being made every day. A number of claims have been bonded and the indications are that a large amount of work will be done in that neighborhood this winter. A Montana outfit have captured a number of valuable claims in this vicinity. We would add the fact that over eight miles of locations have been made, comprising about 112 locations.
We learn that the Gold Hill property on Boulder creek is bonded to an English syndicate. The consideration is \$25,000—ten per cent. down upon the approval of the property by an expert.
The Invicta company are now busily

Montezuma Gold Mining Company, Ltd. Ly.

Capitalization, 1,000,000 Shares. Par Value \$1.00 Each
Fully Paid and Non-Assessable.

Head Office, Rossland, B. C.

OFFICERS.

R. C. McDonald, President. J. G. Houghton, Vice-President. George E. Toms, Secretary.

BANKERS: Bank of British North America.

MINE The Retaliation, On Deer Park Mountain

SUFFICIENT development work has been done to secure a Crown Grant for the property. The Retaliation adjoins the Roderick Dhu and is but one claim distant from the famous Lily May and Deer Park mines, the two largest producing mines on Deer Park mountain. The Deer Park ledge has been traced through the Roderick Dhu and Retaliation. Assays from shaft on Deer Park give \$230.00 per ton. Assays from surface of Retaliation give from \$2.50 to \$6.00 in gold. The first block of stock is now selling at the remarkably low price of

Three and a Half Cents per Share.

The price will be advanced on each subsequent block.

A force of men will be put to work at once to erect cabins and continue the work already started, throughout the winter.

For further information, or application for stock apply to

GEORGE E. TOMS, Secretary, Rossland.

Remittances may be made to the Manager of the Bank of British North America, here.

Delacola Gold Mining Company, Ltd.

Incorporated under the Laws of the Province of British Columbia, Companies Act, 1890, and Amending Acts.

CAPITAL STOCK.
1,000,000 Shares. Par Value \$1.00 Each.
Treasury Stock 300,000 Shares.

Head Office and Mine, ROSSLAND, B. C.

OFFICERS.
PRESIDENT, E. W. JOHNSTON, Rossland, B. C.
VICE-PRESIDENT, JOHN DONAHUE, Rossland, B. C.
TREASURER, ROSS THOMPSON, Rossland, B. C.
SECRETARY, HAROLD KINGSMILL, Rossland, B. C.

DIRECTORS.
E. W. JOHNSTON. JOHN DONAHUE. GEORGE HERRING.
ROSS THOMPSON. HAROLD KINGSMILL. G. W. MYERS.

Bankers: THE BANK OF BRITISH NORTH AMERICA, Rossland, B. C.
Solicitor: J. S. CLUTE, JR., Rossland, B. C.

THE DELACOLA.

The Delacola mineral claim is situated one and one-half miles due north of the town of Rossland on the north slope of the famous Monte Christo Mountains, and contains 37 acres. The company, which is composed entirely of Rossland men, has been incorporated under the laws of the Province of British Columbia. The claim has been surveyed and a crown grant applied for. There is no show in the title and the certificate of improvements will be issued in due course. The company has no indebtedness.

Timber and Water Supply.—A luxuriant growth of timber consisting of pine, tamarack and cedar is standing on the claim and is sufficient to supply wood for fuel and timber for mining and building purposes for some time to come. There is a never-failing supply of water in the shape of a creek at the bottom of the gulch.

Transportation Facilities.—A first-class wagon road runs within a half a mile of the workings on the claim, while the preliminary survey lines of the north spur of the Red Mountain Railway, now in course of construction between Northport and Rossland, pass through one end of the claim.

Vein and Ore.—The Delacola has a well defined east and west vein which passes through the centre of the claim. This vein has been traced for a distance of 800 feet, and several open cuts have demonstrated beyond question the certainty and regularity of the ledge. This ledge has an average width of four feet. The ore streak is eighteen inches wide and is very well defined. The ore is chalcopryite and pyrrhotite in a good quartz gangue. Assays as high as \$8.80 in gold have been obtained from this ore.

Development Work.—In addition to the numerous open cuts across the vein the company has started and is now busily engaged in sinking a shaft on a very favorable outcrop. To continue this work and sink the shaft to a depth of one hundred feet before crosscutting and drifting are commenced, the directors have decided to place a block of 50,000 shares of the treasury stock on the market at the extremely low price of 4 1/2 cents per share.

For further particulars or any other information address
THE REDDIN - JACKSON CO., Ltd. Ly., Rossland, B. C.

L. C. Crawford, Mining and Real Estate Broker.

I make a specialty of handling properties in Waterloo Camp. I have a number of choice groups and claims for sale on a stocking or bonding basis and on terms to suit any bona fide purchasers.

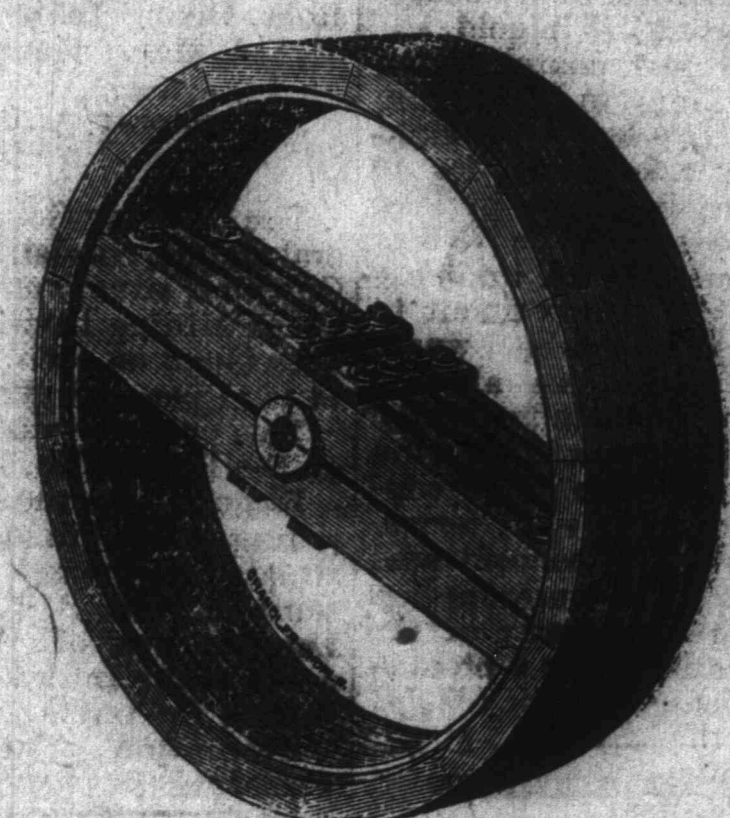
Branch Office: WATERLOO, B. C. Office: TRAIL, B. C.

Spokane Hardware Company

MINING MACHINERY
Mine and Mill Supplies.

Engines, Boilers, Hoists, Whims, Ore Cars, Buckets, Etc.

Wood Pulleys, Shafting, Belting, Packing, Waste Oils, Etc.



WHOLESALE HARDWARE
Pipe and Fittings, Cordage, Scales, Sheet Metals and Tools.
CORRESPONDENCE SOLICITED.
SPOKANE, WASH.

Columbia & Kootenay S. N. Co. Ltd.

Time Table No. 20, taking effect on June 8, 1896.

ARROWHEAD-TRAIL ROUTE.

South Bound Head Down.		North Bound Head Up.	
Mon. Wed. Fri.	7:30 a.m. DE ARROWHEAD	Tue. Thurs. Sat.	11:30 a.m. NAKUSP
Tue. Thurs. Sat.	11:30 a.m. NAKUSP	Mon. Wed. Fri.	7:30 a.m. DE ARROWHEAD
Mon. Wed. Fri.	9:30 a.m. AR ROSSLAND	Tue. Thurs. Sat.	11:30 a.m. TRAIL
Tue. Thurs. Sat.	11:30 a.m. TRAIL	Mon. Wed. Fri.	7:30 a.m. DE ARROWHEAD

Connections at Arrowhead with Canadian Pacific Railway to and from Revelstoke and all points east and west; connections at Nakusp with Nakusp & Slovan Railway to and from Slovan points; connections at Rossland with Columbia & Kootenay Railway to and from Nelson and Kootenay Lake points; connections at Trail with Columbia & Western Railway to and from Rossland; connections at Trail with Str. Lytton to and from Wapeta, Northport and Spokane.

KOOTENAY LAKE ROUTE.

STEAMER KOKANER		STEAMER LYTTON	
4:30 p.m. DE NELSON	Ar 9:30 a.m. KASLO	8 a.m. De TRAIL	Ar 4:30 p.m. WAPETA
8 p.m. Ar KASLO	De 5:30 a.m. NELSON	9 a.m. Ar WANETA	De 3 p.m. NORTHPORT

Connections at Northport with S. P. & N. R'y to and from Spokane and way points; connections at Trail with C. & W. R'y to and from Rossland; connections at Trail with Str. Nakusp to and from Rossland, Nakusp and Revelstoke.

J. W. Troup, Mgr., Nelson, B. C.
T. Allan, Secretary.

SOME SLOCAN SALES

Dan McGillivray Reported to Have Bonded the Lily B.

PRICE SAID TO BE \$60,000

Neighboring Property Going for \$40,000—Magnificent Showings of Ore in Slocan Star and Galena Farm. Three Forks Mill Making a Record.

SANDON, B. C., Nov. 9.—(Special Correspondence).—The ironwork for the aerial tramway of the Noble Five company is now all on the ground. As soon as the wire rope arrives and is strung which ought to be very soon, the mine will begin sending down ore to the mill.

The lower workings of the Slocan Star are a sight for sore eyes. There is a breast of ore 30 feet wide in one drift. Work in the mine has been delayed owing to the non-arrival of machinery ordered a long time ago.

Byron White the president of the Slocan Star company has just returned from a trip through the Rainy Lake mining district of Ontario. He speaks very highly of it saying he considers it one of the most promising gold fields on the continent.

It is reported here that the Lily B., a claim in the dry ore belt at the south end of Slocan lake has been bonded for \$60,000 by Dan McGillivray, the well known railroad contractor. It is generally thought to be one of the best and most promising properties in that section. Another property in the same vicinity is about to change hands for \$40,000 the purchasers being a syndicate of Eastern Canadian capitalists.

There are two steamers now plying on Slocan lake and it is said a third and much larger steamboat will soon be put on by the C. P. R.

News from Three Forks is very satisfactory. The Slocan Milling company's concentrator has been running steadily for several weeks past and it is claimed the net receipts now exceed \$900 per day.

D. J. McDonald, superintendent of the Currie claims, better known as the Galena Farm, has begun work on a perpendicular three-compartment working shaft. This shaft will be put down to the 500-foot level and crosscuts to the vein will be run every 100 feet. A large hoisting and pumping plant has been ordered by C. W. Callahan, from the Ingersoll-Sergeant Drill company of Montreal and it is said a 150-ton concentrator will be ordered during the winter. A Bleichert tramway will be put in during the winter and a good wagon road from the mine to Silverton has just been completed. The showing in the workings is magnificent and for the amount of development exceeds anything in the Slocan. The drifts show 10 to 14 feet of ore, much of which is solid and all of which will make rich concentrates at about the ratio of four tons to one.

SANDON MINING NOTES.

SANDON, B. C., November 5.—(Special Correspondence).—Leighton & Williams have bought the Black Hills mine on the south side of Kaslo creek ten miles from Kaslo and next week will begin work on it. There are from two to four feet of a quartz lead, assays from the surface of which yield 40 to 167 ounces of silver to the ton with a trace of gold.

About seventy men are working on the road from the Payne mine. Work has begun on the upper end and they expect to reach this place in about a week.

The Noble Five Consolidated Mining & Milling company is working about 100 men. The concentrator building is almost completed but the machinery has not yet arrived.

The Argo is being worked, sinking on the vein.

The Slocan Queen expects to strike the lead in three or four days.

The Victoria people have about six inches of concentrating ore that runs very high in silver.

ROSSELLAND CLUB ORGANIZED.

On Tuesday evening about 50 of the leading business men of Rossland met and organized the Rossland club. C. W. Callahan was elected chairman, C. V. W. Fraser, manager of the Bank of Montreal was chosen president and a committee of three was appointed to take charge of fitting up the club rooms which will occupy the second floor of Dr. Keller's block. It is intended to do the thing up in style and the Rossland club expects to deserve the name of being the most handsomely equipped in Kootenay.

EAST KOOTENAY NEWS.

Fort Steele Prospector: It having been intimated to the people of Fort Steele that their weekly mail service is to be reduced to a semi-monthly mail, a mass meeting was held and a committee appointed to draft a petition to the postmaster general setting forth that it is absolutely necessary to the increased business and prosperity of Fort Steele that the weekly mail service be continued and that the round trip be made in seven days.

The Nip & Truck company, engaged in placer mining on Wild Horse creek has made a partial clean up. We are unable to get at the exact amount of gold taken out, but from good authority it is said that 25 per cent of the total amount invested upon the property was obtained during the past season.

On Perry creek there are a large number of men at work, new locations being made every day. A number of claims have been bonded and the indications are that a large amount of work will be done in that neighborhood this winter. A Montana outfit have captured a number of valuable claims in this vicinity.

We would add the fact that over eight miles of locations have been made, comprising about 115 locations.

We learn that the Gold Hill property on Boulder creek is bonded to an English syndicate. The consideration is \$25,000—ten per cent. down upon the approval of the property by an expert.

The Invicta company are now busily

engaged in cleaning up and it is reported that a large amount of gold has been taken out.

The North Star company have some 30 men working at the mine taking out ore. It is reported that the ore now being handled will run in the vicinity of \$200 a ton.

THE BIG BEND COUNTRY.

Revelstoke Mail: J. W. Haskins, manager of the Orphan Boy company, came down from the property today. He reports that the whole face of the tunnel, now in 30 feet, is in solid ore. The lead was opened on the foot wall, the work angling through it to the hanging wall side. This work has proved the ore body 15 feet wide already and no hanging wall is in sight yet. Manager Haskins thinks the lead is fully 30 feet wide. The shaft, which is down 20 feet is also in ore and the prospects of the property are very good. So good are they that the order has gone out to the brokers to advance the price of stock to 15 cents, at which price it can now be obtained.

The rocks in the canyon are reported to be seven or eight feet clear out of water and just fit for work to be done on their removal. This is the proper time for this work, which should be pointed out to Mr. Tarte, as at no time in the spring is the water so low. When the river freezes the water banks up and covers the rock, making it bad for working.

The hydraulic company at Smith creek made its clean-up last week and will now close down.

The Consolation placer is taking out pay to the value of \$8 per day per man. Preparation is in progress at the North Star placer for its winter work, which will be the running of the drift to bed-rock.

Victoria Assay Office

28 Broad St., Victoria, B. C.

Gold.....	\$1.00	Gold and silver.....	1.50
Silver.....	1.00	Lead and silver.....	1.50
Lead.....	1.00	Copper, silver & gold.....	3.00
Copper.....	1.00		

Other metals on application. All samples to be sent carriage paid and clearly marked and to be advised by letter enclosing charges.

Steel Roofing, Siding, Ceiling, And Lath, Corrugated Iron, etc.

Reliable goods. Close prices. Prompt shipment. Send for catalogue.

Metallic Roofing Co., Ltd.
MANUFACTURERS
TORONTO, ONT.
RELIABLE AGENTS WANTED.

Stock Certificates

A new form just received. We also print Prospectuses, Pay Rolls, Vouchers, Order blanks, and other Mining Forms.

The Most Complete Printing Outfit in the District.

Review Printing House, In Miner Block.

A. A. NEWBERRY. CHAS. G. GRIFFITH, Mining Engineer

NEWBERRY & GRIFFITH,

DEALERS IN

MINES.

Jamieson Bld., Spokane, Wash.

HOTELS.

The Lancaster House

Gentlemen's Boarding House. Table d'hôte System.
GARNETT & LONG, Props.

Meal hours: Breakfast, 7:30 to 9 a.m.; Lunch, 12 to 2 p.m.; Dinner, 6 to 8 p.m.
Room and board per week, \$12.00. Room and board per day, \$2.00. Board only per week, \$8.00. Room per week, \$4.00. Single meals: breakfast and dinner, 50c; lunch, 40c.

ST. PAUL ST., ROSSLAND.

Crown Point Hotel,

S. F. PETERSEN, PROP.

HOWARD HOTEL,

O'CONNELL & FARRELL, PROPS.

BELMONT HOTEL,

MCDONALD & MURCHISON, PROPS.

RESERVE ST., ROSSLAND.

ELDS

possible per- in of

substantial endorsement kind has been received.

Liability Effectively Removed.

bt exists as to the liability dollar shares sold below the organizers have decided matter beyond question syndicate shares at the cents each, and selling less than par.

Allotment.

ers invite subscriptions for one million of the non-assessable syndicate cents per share. will be made in the order ns are received. ion will be entertained for hundred shares. reserved, under the prece to withdraw the syndicate ale without notice.

LAND, B. C.

Money?

Clothing

h's and Children's Goods, Boots and

ods at satisfactory

Co.,

ine, Wash.

BROS.,

Importers

are, Cutlery, Lamps, Bar Goods.

toria, B. C.

west of Toronto.

shed complete at short notice.

mirrors and complete bar

order.

face fixtures, desks, etc.

for prices and samples or call

J. TWISS, KASLO, Our Kootenay Agent.

SMOKELESS POWDER

RIFLE CARTRIDGES.

OF

IN RIFLES,

tion. We have a good line of

Spokane, Wash.

\$20,000 DIVIDEND

Idaho Mine in the Slocan Will Declare Another Tomorrow.

RICH ORE IN THE STOPES

J. D. Farrell Has Some Splendid Specimens of Antimonial and Ruby Silver—Lots of Ore in Sight for Future Dividends.

J. D. Farrell is in Rossland once more looking after the affairs of the Iron Horse company. He has been in the Slocan for some time past where he has very extensive interests, being a part owner in the Idaho and several other companies pretty closely identified with the management of that mine.

BOUNDARY DISTRICT NEWS.

Boundary Creek Times: Jack Martin has struck a fine body of ore on his claim adjoining the Adirondack in Kimberley camp.

The tunnel is now in on the Mother Lode some 35 feet in the ore. The rock is phenomenally hard and it is not uncommon for the men to dull between 350 to 400 drills in 24 hours.

E. A. Bilenberg has been working recently on a group of claims owned by him in Deadwood camp—the Anaconda, Columbia and Kootenay. The showing on all three properties is good, recent assays giving returns from \$10 to \$40.

An offer has been made by eastern people for the Minnehaha claim, which adjoins the Cariboo at Camp McKinney. The price is away up in the thousands and there is every prospect that the deal will go through.

Work is being done on the Sunnysides, in Providence camp. On this claim there is apparently an immense body of ore. Recently some very fine specimens of native silver were obtained before the first assessment was completed.

M. T. Robinson came down from Kimberley camp this week, having completed the assessment on the Hamilton and done some \$150 worth of work on the Ballarat. This latter is represented by an open cut, 18 feet wide and 12 feet deep.

A fine body of pyrrhotite ore, through which copper pyrites is disseminated, is shown up. Another claim of Robinson's is the Rossland, a quartz and galena proposition; assays from surface rock gave \$4.45 in gold. George Cook has just completed an assessment on the Gem in Wellington camp, by stripping the ledge and sinking on either side, respectively for 10 and 12 feet. The ore is copper pyrites, and the lead is supposed to be 75 feet across.

ROSSLAND STOCK MARKET.

During the past week the public has apparently been playing no favorites. There has been more or less trading in nearly every stock on the list and prices on the whole have been steady. Celtic Queen has dropped off a couple of points Commander has advanced three cents and Mayflower gained two. Iron Horse and Red Mountain are on the market again at 20 and 25 cents respectively. The nearest approach to a sensation this week was the rally in Mayflower. Owing to continued improvements in the workings one of the largest holders of the stock started in on Monday to buy up all the loose shares he could find at 12 1/2 cents. He picked up 10,000 at that price and was well pleased. Poorman has acted queerly. For the first day or two after the assessment was announced it looked as though the stock might break away to five or six cents at which price the whole capital stock would have been absorbed in Rossland. The stock never touched either of these figures, however, as it has been in more demand all week than at any time since last spring. Evening Star, which has been a sadly demoralized stock of late, is getting in better shape. 700,000 of its 1,000,000 shares have been pooled, and this ought to help it to a better position. Evening Star, which is the Iron Colt stock at 17 1/2 cents has been sold and a small block at 18 cents is now being offered. Silver Bell has been taken largely during the week although the price has advanced to 7 1/2 cents. One block of 20,000 shares was sold to a Buffalo, N. Y., broker after an examination of the mine. Canadian Gold Fields syndicate is being rapidly subscribed. Buffalo at five cents is finding numerous buyers. Waneta and Trail Creek is meeting with good support. International at one and a half is a record breaker. Delacola is steadily growing in favor. Of outside stocks Orphan Boy appears to be doing very well. Its stock was recently advanced to 15 cents and is holding its gain steadily.

ly. Dells continues in favor and Slocan stocks are in big demand.

[Note—No stocks are listed in the following table unless the property on which they are founded has been fully paid for, and the title perfected.]

Table with columns: Companies, No. of Shares, Par Value, Price. Lists various mining companies like Alberta, Brit. Columbia, B. C. Gold King, etc.

* No stock on the local market. Dividends paid to date are as follows: Le. Rol. \$25,000; Grey Eagle, Cariboo, \$6,000; Slocan Star, \$50,000; Idaho, Cumberland, Revo and Noble five have also paid dividends.

Reddin-Jackson Co's Sales.

Reddin-Jackson company, limited, report the following sales of mining stock during the week: 1,000 Good Hope, 5 1/2c.; 1,500 Yale, 3c.; 5,000 Good Hope, 5 1/2c.; 5,000 Commander, 20c.; 800 Josie, 62c.; 5,000 Buffalo, 5c.; 3,000 Great Western, 18c.; 4,500 Yale, 3c.; 500 Great Western, 18c.; 1,000 Mugwump, 16c.; 8,313 Nevada, 10c.; 500 Yale, 3c.; 2,500 Delacola, 4 1/2c.; 6,000 Good Hope, 5 1/2c.; 1,000 Monte Cristo, 18c.; 1,250 Good Hope, 5 1/2c.; 2,334 Great Western, 17 1/2c.; 3,000 Deer Park, 17 1/2c.; 800 Alberta, 10c.; 2,500 Caledonia, 11c.; 1,000 Celtic Queen, 10c.

THE OLD FLAG GOLD MINING CO., LTD.

Incorporated Under the Laws of British Columbia, Companies Act, 1890. Capital Stock 1,500,000 Shares. Par value \$1.00 each, of which has been set aside as Treasury Stock 500,000 shares. Fully paid and non-assessable. Head Office, Rossland, B. C. Mine, South Slope of Lookout Mountain. Trustees for the first three months are: E. M. Carpenter, President; Robt. Dixon, Treas.; J. E. Crane, Vice-Pres.; W. J. Whiteside, Sect. Harry Gager, Mining Engineer. Bankers: Bank of Montreal. Solicitors: Elliott & Whiteside. Directors: O. M. Carpenter, Robt. Dixon, J. E. Crane, J. B. Henderson.

The Old Flag Gold Mining Company is the owner of the Eureka Group of Mineral claims, consisting of the Eureka No. 1, Triumvir, Esmeralda, Old Flag, and Omenita, situated on the south slope of Lookout Mountain, in the celebrated Trail Creek Mining Division of West Kootenay District. Good surface showings have been found on each, assaying from a trace to \$5.60 in gold, \$3.88 in silver, and from 14 to 17 per cent (\$28 to \$34) in copper. This property was purchased on the report of Mr. Harry Gager, mining engineer, on the Eureka No. 1. The following is his report in full: Report on the Eureka No. 1 Mineral Claim. This property consisting of one full claim, fifteen hundred by fifteen hundred feet (1,500x1,500), is situated on the east slope of Lookout Mountain, about seven (7) miles below and south of Trail, B. C., and one (1) mile west of the Columbia river, at Ponton's Landing, near old Fort Sheppard, and from two (2) to two and one-half (2 1/2) miles north of the International Boundary line, Trail Division, West Kootenay District, British Columbia. Formation. The general formation consists of Granite, Diorite and Syenite, with dykes of porphyry running parallel with the granite. The trend being almost due north and south. Vein or Ledge. The vein or ledge is of the same character as those found near Rossland, known in a general way as "iron capping," the gangue consisting of diorite mixed with quartz, carrying arenaceous iron and iron pyrites and copper chalcocyanides, more or less oxidized on the surface. At the discovery there is a small outcrop near the hanging wall, which is well mineralized, but in bunches. This, however, is a good indication of what may be expected upon development, as samples of this have given assay values of from \$3.50 to \$5.60 gold and from 14 per cent to 17 per cent copper, and also some silver. The principal outcrop is about eighty (80) feet north of the discovery, and is very strong, showing it to be fully fifteen (15) feet in width, and it shows for fully thirty (30) feet in length, being comparatively free from siliceous rock or drift for that distance. This outcrop stands out boldly from between the walls, under an almost perpendicular bluff. The surface is slightly oxidized, the entire ledge being mineralized, but not sufficient to carry much value, yet assays have been taken near the foot wall showing from a trace in gold and copper to \$2.45 gold and one and one-half per cent copper, which is a good showing for surface. Small particles of native copper have been found near the hanging wall at this point. The ledge shows to be in a contact between granite and a porphyritic granite. In my opinion, the ledge here is broken over, and the dip, which is now at an angle of about forty (40) degrees to the west, will change when development work is done to an angle of perhaps from sixty (60) to seventy (70) degrees. The general dip of the formation would indicate this. Workings.—The only work done on the property at the present time is a small open cut at place of discovery, and a cut made at the principal outcrop as assessment work. This cut was made through the footwall and into the ledge for a short distance. General Remarks.—This is, in my opinion, a most promising prospect, and that upon development it will prove a very valuable property. The surface showings of many of the principal mines in the district and in the vicinity of Rossland were not as good as this, and like them it will require development to demonstrate its value. A wagon road can be made almost to the property at a small cost, and by that the ore could be transported either to the smelter at Trail, or Northport, Washington, by steamboat, or ferried across the Columbia river and loaded on cars at Waneta, B. C., and from there taken either to the smelter at Nelson, B. C., or to the States via the Nelson & Fort Sheppard and Spokane Falls & Northern railroad. Respectfully submitted, HARRY GAGER, Mining Engineer. (Signed):

The directors have let a contract for sinking a 100-foot shaft, under the direction and superintendence of H. Gager, Esq. The directors have placed a small amount of the treasury stock on the market at 10 cents per share. The shares of the company are fully paid and non-assessable. The by-laws of the company provide that the directors shall not contract any debts without having sufficient money on hand to meet same when the contract is entered into. When the mine is on a paying basis, and should there be remaining in the treasury shares exceeding 50,000, the surplus will be divided amongst all the then shareholders. For shares or other particulars address: W. J. WHITESIDE, Secretary, Rossland, B. C.

Ingersoll = Sergeant Drill Dep't.

Main Office and Works, MONTREAL, P. Q.

Air Compressors, Rock Drills, Link Motion and Friction Hoisting and Winding Engines, Boilers, Sinking and Feed Pumps. GATES ROCK BREAKERS AND ROLLS. Duplicate Parts Carried in Stock. For Particulars and Estimates Write to or Call on

JAMES D. SWORD, Manager, Rossland Branch.

DOMINION WIRE ROPE CO., Ltd., MONTREAL, QUE.

MANUFACTURERS OF Reliable Hoisting, Mining, Tramway, Ferry and Guy Ropes. Contractors for the Construction of Improved Single and Double Rope Tramways.

Write for New Catalogue and Estimates.

JAMES D. SWORD, Agent, Rossland.

NORTHEY PUMP CO., Ltd., Toronto.

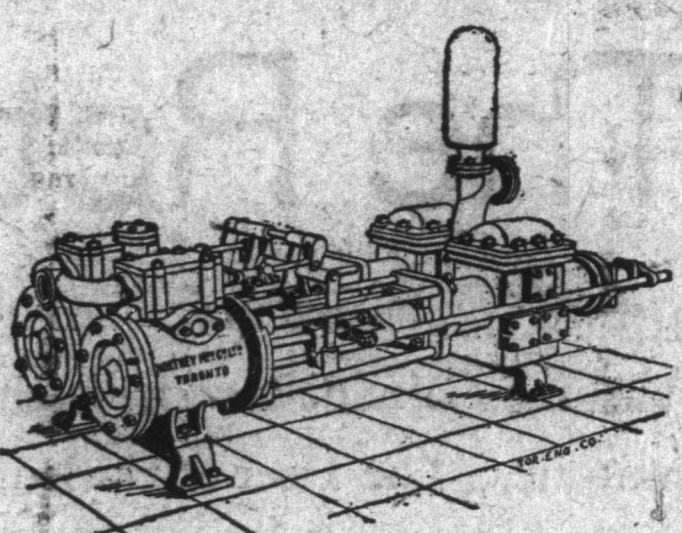
Manufacturers of

Every Description of PUMPS.

Mining Pumps a Specialty.

Write for Prices.

JAMES D. SWORD, Agent, Rossland.



Queen, 6c.; 3,500 Deer Park, 18c.; 1,000 E. Star, 24c.; 5,000 Eureka, 8 1/2c.; 12,000 Good Hope, 5 1/2c.; 1,000 Great Western, 17 1/2c.; 1,500 High Ore, 8c.; 1,000 Jumbo, 88c.; 8,000 Mayflowers, 13 1/2c.; 2,000 Monte Cristo, 17c.; 2,000 Poorman, 8c.; 2,000 Yale, 3c.; 8,000 Poorman, 8c.; 1,500 Phenix, 15c.; 6,000 View, 10c.; 1,000 Red Mountain, 35c.; 1,200 Mugwump, 14c.

Acadian Given Up.

TORONTO, Ont., Nov. 12.—No word has yet been received of the missing propeller Acadia, now seven days out from Fort William. It has not been reported from the Soo. Vesselsmen here are disposed to give the boat up as lost. They believe, had she not gone to the bottom, the captain would have managed in some way to communicate with the owners.

Thomas Firth & Sons, Ltd., Sheffield, England.

Rock and Mining Drill Steel. Does more work in a given time than any other steel, and with fewer broken shanks and bits.

KEPT IN STOCK.

James D. Sword, Agent, Rossland.

Registered Cable Address, "Rossmina."

A. W. ROSS & CO., MINING BROKERS, ETC.

4 King Street E., TORONTO, ONT.

Contractors for the sale of Treasury Stock of Mining Corporations in Trail Creek, Boundary, Slocan and other British Columbia Mining Districts. Quotations and Correspondence Solicited.

We are prepared to purchase any of the Standard Stocks at Market Quotations, paying cash for same. Wire Offerings.

Sawyer, Murphey & Co.,

Mining Brokers, Canada Life Building, TORONTO, ONT. Contractors for the Sale of Treasury Stocks of Mining Corporations in the Trail Creek District.

W. H. TAYLOR & Co., MINES AND MINING STOCKS

We make a specialty of the following stocks: Josie, Mayflower, Consol, Iron Mask, Monte Cristo, War Eagle, St. Elmo and Poorman. Mines reported on. Mining work superintended.

Next to Bank of British North America, P. O. Box 67. ROSSSLAND & SPOKANE Rookery Building. C. F. CLOUGH, PRESIDENT. L. J. McATEE, VICE-PRESIDENT AND TREASURER. J. F. PIGGOTT, SECRETARY.

C. F. CLOUGH & CO., (Incorporated.) Mines and Mining Stock Brokerage

Dealers in the Mines and Stocks of Companies Operating in Trail Creek, Slocan, and Boundary Creek Mining Districts in British Columbia and the Various Districts in the States of Washington, Idaho and Montana. Correspondence Solicited. Send for Circular Letter Giving Latest Quotations. Information Furnished upon Application. Offices: Wolverton Bldg., Spokane. 36 King St., East, Toronto, Ont. Rossland, B. C.

Washington Brick, Lime, & Mfg. Co., Moynahan & Campbell, Mining Operators. Spokane, Wash. Rossland, B. C.

Twelve Pages.

Two Dollars a Year.

WANETA Gold Mine

Capital Stock 1,000,000 Devel

C. O. LALONDE, President Treasurer; D. D. B. CHAS. BATES and Solicitors. HARRIS MACNEILL & I Of Rossland and Vancouver

The Company's Pr

The company's property, known as "GROUP" comprises three claims of each, which are prior locations situated miles northwest of Waneta, about Grouse Mountain and about seven from Rossland and Trail.

Promoters' Sha

Are pooled until August, 1897, possible for original holders to offer the market at any price.

Development S

The first issue of 50,000 shares up during the past few days almost buyers, which is a guarantee of the locality. The directors have ordered of 50,000 Shares to be placed on the

10 Cents Per Sh (Price subject to change with

Head Office, La

Iron Co

Capital Stock 1,000,000 Treasu

Head OFFICERS. W. A. CA PRESIDENT, Rossland Montreal, Quebec.

DIRECTORS. WM. I Winnipeg, Man. F. McCRAE. WM. D. S Mana

The Iron Colt

The Iron Colt is the first west great Columbia-Kootenay ledge. It is by 1500 feet and has been surveyed. There is no adverse upon the title.

Developme

A shaft was recently started on the is now down 40 feet. It has shown ore from the surface and is now in across the bottom. It is one of the bodies ever opened in the camp. Th in appearance with that now being Kootenay mine.

Shareholders P

A special provision in the by-laws is that no debt shall be incurred beyond money actually in the treasury. Any incurred becomes a personal liability

25,000 Shares The second

MOYNAHAN R

Dep't.

Engines, Boilers,
Parts Carried in

Branch.

, Ltd.,

uy Ropes.

mways.

gent, Rosslan

Toronto.

PUMPS.

Agent, Rosslan

rd.

Sheffield,

Drill
Steel.

anks and bits.

Agent, Rosslan

RS, ETC.

y, Slocan and other Britis

of the Stan-
ing cash for

Co.,

TORONTO, ONT.

Creek District.

H. STEVENSON
W. H. TAYLOR.

STOCKS

Consol, Iron Mask,
ed on. Mining work

Rookery Building.

J. F. PIGGOTT, SECRETARY.

CO.,

rokerage

Boundary Creek Mining
ton, Idaho and
est Quota.

Ont. Rosslan, B. C.

W. A. CAMPBELL

ahan & Campbell,
ning Operators.

ing Mines
Rosslan, B. C.

Twelve Pages.

THE ROSSLAND MINER.

Pages 9 to 12.

Two Dollars a Year.

ROSSLAND, B. C., FRIDAY, NOVEMBER 13, 1896.

Second Year, Number 37.

WANETA & TRAIL CREEK Gold Mining Company, Ltd.

Capital Stock 1,000,000 Shares. Par Value \$1.00 Each.
Development Stock 400,000 Shares.

OFFICERS.

C. O. LALONDE, President; A. S. GOODEVE, Vice-President; ROBT. DEXON,
Treasurer; D. D. BIRKS, Secretary; WALTER C. ARCHER, Manager;
CHAS. BATES and A. H. MACNEILL, Directors; Rosslan, B. C.

Solicitors.

HARRIS MACNEILL & DEACON,
Of Rosslan and Vancouver.

Bankers.

BANK OF BRITISH NORTH AMERICA,
Rosslan.

The Company's Property.

The company's property, known as the "COPPER
GROUP" comprises three claims of about 50 acres
each, which are prior locations situate about three
miles northwest of Waneta, about two miles from
Grouse Mountain and about seven miles equally
from Rosslan and Trail.

Promoters' Shares.

Are pooled until August, 1897, so it will be im-
possible for original holders to offer their stocks on
the market at any price.

Development Stock.

The first issue of 50,000 shares has been taken
up during the past few days almost entirely by local
buyers, which is a guarantee of the estimation in
which this property is held in the immediate
locality. The directors have ordered a further issue
of 50,000 Shares to be placed on the market at

10 Cents Per Share.

(Price subject to change without notice.)

Description of Property.

The claims have a well defined and strong ledge
running through the whole length and cropping out
about 20 feet wide at the surface.

Work is now being actively prosecuted, seven
men being employed in a shaft down 15 feet and
crosscutting. In the shaft is a vein of solid ore carrying
gold, copper, silver and lead values assaying as
follows:

No. 1, from surface, total value... \$ 10.36
No. 2, from shaft 15 feet, total value... 29.20
All arrangements are completed for winter work
suitable boarding houses, etc., having been erected
during the past month. It is confidently expected
the company will have a quantity of ore ready for
shipment in the spring.

Further information can be obtained
on application to

D. D. BIRKS, Secretary.

Head Office, Lalonde & Rodier Blk, Rosslan

Iron Colt Gold Mining Company, Ltd.

Capital Stock 1,000,000 Shares. Par Value \$1.00 Each.
Treasury Stock 300,000 Shares.
FULLY PAID AND NON-ASSESSABLE.

Head Office, Rosslan, B. C.

OFFICERS. W. A. CAMPBELL, PRESIDENT, Rosslan. P. BURNS, Vice-
PRESIDENT, Rosslan. JOHN F. McCRAE, SECRETARY-TREASURER,
Montreal, Quebec.

DIRECTORS. WM. MCKENZIE, Toronto, Ont. GEO. H. CAMPBELL,
Winnipeg, Man. JOHN R. REAVIS. W. A. CAMPBELL. JOHN
F. McCRAE. WM. D. SMITH. JOHN J. MOYNAHAN.
Manager, JOHN J. MOYNAHAN.

The Iron Colt Mine.

The Iron Colt is the first west extension of the
great Columbia-Kootenay ledge. It is a full claim 600
by 1500 feet and has been surveyed for a crown grant.
There is no adverse upon the title.

Development.

A shaft was recently started on the main ledge and
is now down 40 feet. It has shown about two feet of
ore from the surface and is now in solid ore all the way
across the bottom. It is one of the finest looking ore
bodies ever opened in the camp. The ore is identical
in appearance with that now being taken from the
Kootenay mine.

Shareholders Protected.

A special provision in the by-laws of this company
is that no debt shall be incurred beyond the amount of
money actually in the treasury. Any further liability
incurred becomes a personal liability of the trustees.

Treasury Stock.

We are able to announce that the entire first issue
of 50,000 shares of treasury stock at 15 cents was taken
in one week. We now offer a second issue of 25,000
shares of treasury stock at 17 cents per share.

Superintendent's Report.

ROSSLAND, October 27.

W. A. Campbell, President Iron Colt Gold Mining Co.,
DEAR SIR:—This is to certify that I have today made
a personal examination of the shaft of the Iron Colt.
There is a total depth of a little over 40 feet with solid
clean ore showing a high percentage of copper across
the entire bottom of the shaft.

JOHN MOYNAHAN, Manager.

25,000 Shares of Treasury Stock,
The second installment, are now offered to the public
At 17 Cents a Share.

MOYNAHAN & CAMPBELL, Agents,
ROSSLAND, B. C.

SMELTER QUESTION

Cash System of Railroads Must
Have a Plant on Its Line.

IT SHOULD BE IN CANADA

There Are Just as Good Locations for
a Smelter in Kootenay as in Wash-
ington and Public Policy Requires
Home Smelters.

The completion of the Red Mountain
railroad into Rosslan must in the very
nature of things effect materially and
decisively the smelter situation so far as
it relates to this camp and a large con-
tiguous territory. It is not reasonable
to suppose that the people back of the
Columbia & Red Mountain would put
over half a million dollars into the enter-
prise without having the best of assur-
ances that they will be protected in their
undertaking by a certain amount of
traffic. The kind of traffic which as yet
is present at least yield the bulk of
revenue is the hauling of grade ore
from the mines. There are now two
main lines of smelters for this ore. One
of them is Mr. Heinze's Columbia &
Western, running from Rosslan to Mr.
Heinze's smelter at Trail. The other is
the Columbia & Red Mountain which at
present delivers its shipments to other
American lines at Spokane, which in
turn reach Everett and Tacoma, Wash.,
and East Helena and Great Falls, Mont.
Mr. Heinze has a haul of 12 miles to
reach his smelter. The smelters in the
States to which ore is taken over the
Columbia & Red Mountain are from 500
to 800 miles distant. But distance and
the consequent increased cost of trans-
portation are not the only factors in the
case. The American smelters can under
present conditions obtain ore at a lower
cost than the smelter at Trail. Their
labor is cheaper, their fuel is cheaper,
and they get lower rates of transportation
on their material and bullion.

This is the situation. The exact
amount of ore which can be given
should be quoted cannot here be given.
We cannot state just what it costs to
smelt ore at Trail and just what it
costs to do the same at Everett, Ta-
coma, Great Falls or East Helena. But
it is a fact that the cost of smelting
which must be plain to every-
body and to these we desire to call at-
tention.

It is also understood that Mr. Heinze
is contemplating building a railroad from
Trail to Robson this winter. The mat-
ter has been under advisement for some
time, but according to the best infor-
mation we have been able to get no decision
has yet been arrived at. No one need be
as surprised, however, if work on the
railroad is begun at any moment.

It is also understood that Mr. Heinze
is contemplating building a railroad from
Trail to Robson this winter. The mat-
ter has been under advisement for some
time, but according to the best infor-
mation we have been able to get no decision
has yet been arrived at. No one need be
as surprised, however, if work on the
railroad is begun at any moment.

It is also understood that Mr. Heinze
is contemplating building a railroad from
Trail to Robson this winter. The mat-
ter has been under advisement for some
time, but according to the best infor-
mation we have been able to get no decision
has yet been arrived at. No one need be
as surprised, however, if work on the
railroad is begun at any moment.

It is also understood that Mr. Heinze
is contemplating building a railroad from
Trail to Robson this winter. The mat-
ter has been under advisement for some
time, but according to the best infor-
mation we have been able to get no decision
has yet been arrived at. No one need be
as surprised, however, if work on the
railroad is begun at any moment.

It is also understood that Mr. Heinze
is contemplating building a railroad from
Trail to Robson this winter. The mat-
ter has been under advisement for some
time, but according to the best infor-
mation we have been able to get no decision
has yet been arrived at. No one need be
as surprised, however, if work on the
railroad is begun at any moment.

It is also understood that Mr. Heinze
is contemplating building a railroad from
Trail to Robson this winter. The mat-
ter has been under advisement for some
time, but according to the best infor-
mation we have been able to get no decision
has yet been arrived at. No one need be
as surprised, however, if work on the
railroad is begun at any moment.

It is also understood that Mr. Heinze
is contemplating building a railroad from
Trail to Robson this winter. The mat-
ter has been under advisement for some
time, but according to the best infor-
mation we have been able to get no decision
has yet been arrived at. No one need be
as surprised, however, if work on the
railroad is begun at any moment.

It is also understood that Mr. Heinze
is contemplating building a railroad from
Trail to Robson this winter. The mat-
ter has been under advisement for some
time, but according to the best infor-
mation we have been able to get no decision
has yet been arrived at. No one need be
as surprised, however, if work on the
railroad is begun at any moment.

It is also understood that Mr. Heinze
is contemplating building a railroad from
Trail to Robson this winter. The mat-
ter has been under advisement for some
time, but according to the best infor-
mation we have been able to get no decision
has yet been arrived at. No one need be
as surprised, however, if work on the
railroad is begun at any moment.

IN THE SOUTH BELT

Surprisingly Rich Ore Being Taken
From Three Different Properties.

RUNS VERY HIGH IN SILVER

Mayflower, Red Eagle and Silver Bell
Are the Latest Surprises—Each
Shows Big Bodies of 1000 Ore—New
Section Just Developing.

There is a district in the South Belt
which is probably destined to make a
sensation within the next few weeks for
very high grade ore and plenty of it.
It is impossible as yet to give the exact
limitations of this district or to describe
it accurately but it may be said to in-
clude the Silver Bell, Lily May, Curlew,
Blue Bird, Hattie Brown, Red Eagle,
Mayflower, and probably the Hill Top,
Little Bess, Aife, and other claims in
that vicinity. The assays recently had
from the Mayflower, Red Eagle and Sil-
ver Bell are quite surprising and leave
no doubt of the richness of the ore in
those claims. A peculiarity is that the
chief element of value in these ores is
silver. They also carry some lead. All
of them carry gold.

The Mayflower now has 30 inches of
ore in the face of a short crosscut run
out north from the bottom of a 70-foot
shaft at the mouth of the tunnel being
driven in from the track of the Colum-
bia & Western railroad. This ore aver-
ages in gold, silver and lead fully 1100
per ton. Some of it has gone as high as
170 ounces of silver.

Some equally high assays have been
had from the Silver Bell, which is a
mile or two southwest of the Mayflower
and near the Lily May. Some of this
ore referred to by Mr. Minns last week
ran 438 in lead, 468 in silver and 11.20 in
gold, making a total value of \$107.20.
The ledge on which the work is now
being done is 20 feet wide and there is
more or less ore scattered clear across.
It is a very large and attractive showing.

The Red Eagle lies next to the May-
flower on the southwest. It takes in the
ground on which the sawmill at the
curve of the Columbia & Western rail-
road is situated. The half the Red
Eagle ground is on the east side of Trail
creek and lies up against the Mayflower
hill. There are two or three ledges on
this claim. One of them seems to be
the same as that running through the
Curlew, and the ore taken from the sur-
face of this vein runs from 112 to 450 in
gold and silver. The average is about
332.

The south ledge is 200 feet from the
sawmill and the showing here is very
fine. There is one streak of ore 20 inches
wide and another six inches wide, with
mineralized rock between. This ore
runs as high as 396, with gold predom-
inating very much. It is probably the
richest surface ore yet found in the
camp. Some very high assays have also
been had from the Curlew, which ad-
joins the Red Eagle on the west.

Active work is now being done on the
Silver Bell, Lily May, Mayflower, Blue
Bird and Hattie Brown, and work is to
commence immediately on the Red
Eagle. We may reasonably expect,
therefore to have important news from
this gold-silver district at any time.

The development on this group of
mines gives great strength to those
claims lying on the summit of Mayflower
hill, including the Hill Top, Aife and
Little Bess. All these are in the line of
the northeast extension of these rich
ledges and they certainly should catch
some or all of them.

Little Bess Company.
Owns a Fair Property in the South
Belt—Dunn's Report.

In our issue of October 30 appeared a
letter from a subscriber in Brookville,
Ont., inquiring about the Little Bess
Mining company. We answered that
we had never heard of it, but as several
other letters seeking information
about this company have since reached
us we have looked the matter up. We
find that the Little Bess is a full claim,
located in May, 1895, adjoining the well
known Hill Top on the east and the
equally well known R. E. Lee on the
south. The company was only organized
in Spokane a few weeks ago and its
control was at once transferred to Tor-
onto capitalists.

The Little Bess belonged to W. N.
Dunn, who retains a quarter interest in
it. Mr. Dunn was the original owner of
the Lee and Maid group and also of the
Hill Top. He bought the Little Bess
shortly after its location for \$1,500 cash.
From him we learn the following par-
ticulars regarding the Little Bess:

"Both veins of the Hill Top have been
traced through the Little Bess ground.
The work consists of a shaft down about
22 feet, showing a well defined vein,
from which assays of from 45 to 422
have been obtained. The shaft is sunk
on the footwall of the ledge, which has
never been crossed, so its width is not
known. A tunnel was also started to
crosscut the vein, which is now in about
10 feet and has to run 22 feet more to
catch the hanging wall of the vein."
Mr. Dunn is one of the best known
mining men in Rosslan and his judg-
ment can usually be relied on. He has
shown his faith in the Little Bess by
buying it for \$1,500 at a time when very
few investments in South Belt prop-
erties had been made, and he now reiter-
ates his faith by retaining a quarter in-
terest in it. We feel therefore that we
are quite justified in saying that the
Little Bess is a good prospect.

SMELTER QUESTION

Cash System of Railroads Must
Have a Plant on Its Line.

IT SHOULD BE IN CANADA

There Are Just as Good Locations for
a Smelter in Kootenay as in Wash-
ington and Public Policy Requires
Home Smelters.

The completion of the Red Mountain
railroad into Rosslan must in the very
nature of things effect materially and
decisively the smelter situation so far as
it relates to this camp and a large con-
tiguous territory. It is not reasonable
to suppose that the people back of the
Columbia & Red Mountain would put
over half a million dollars into the enter-
prise without having the best of assur-
ances that they will be protected in their
undertaking by a certain amount of
traffic. The kind of traffic which as yet
is present at least yield the bulk of
revenue is the hauling of grade ore
from the mines. There are now two
main lines of smelters for this ore. One
of them is Mr. Heinze's Columbia &
Western, running from Rosslan to Mr.
Heinze's smelter at Trail. The other is
the Columbia & Red Mountain which at
present delivers its shipments to other
American lines at Spokane, which in
turn reach Everett and Tacoma, Wash.,
and East Helena and Great Falls, Mont.
Mr. Heinze has a haul of 12 miles to
reach his smelter. The smelters in the
States to which ore is taken over the
Columbia & Red Mountain are from 500
to 800 miles distant. But distance and
the consequent increased cost of trans-
portation are not the only factors in the
case. The American smelters can under
present conditions obtain ore at a lower
cost than the smelter at Trail. Their
labor is cheaper, their fuel is cheaper,
and they get lower rates of transportation
on their material and bullion.

This is the situation. The exact
amount of ore which can be given
should be quoted cannot here be given.
We cannot state just what it costs to
smelt ore at Trail and just what it
costs to do the same at Everett, Ta-
coma, Great Falls or East Helena. But
it is a fact that the cost of smelting
which must be plain to every-
body and to these we desire to call at-
tention.

It is also understood that Mr. Heinze
is contemplating building a railroad from
Trail to Robson this winter. The mat-
ter has been under advisement for some
time, but according to the best infor-
mation we have been able to get no decision
has yet been arrived at. No one need be
as surprised, however, if work on the
railroad is begun at any moment.

It is also understood that Mr. Heinze
is contemplating building a railroad from
Trail to Robson this winter. The mat-
ter has been under advisement for some
time, but according to the best infor-
mation we have been able to get no decision
has yet been arrived at. No one need be
as surprised, however, if work on the
railroad is begun at any moment.

It is also understood that Mr. Heinze
is contemplating building a railroad from
Trail to Robson this winter. The mat-
ter has been under advisement for some
time, but according to the best infor-
mation we have been able to get no decision
has yet been arrived at. No one need be
as surprised, however, if work on the
railroad is begun at any moment.

It is also understood that Mr. Heinze
is contemplating building a railroad from
Trail to Robson this winter. The mat-
ter has been under advisement for some
time, but according to the best infor-
mation we have been able to get no decision
has yet been arrived at. No one need be
as surprised, however, if work on the
railroad is begun at any moment.

It is also understood that Mr. Heinze
is contemplating building a railroad from
Trail to Robson this winter. The mat-
ter has been under advisement for some
time, but according to the best infor-
mation we have been able to get no decision
has yet been arrived at. No one need be
as surprised, however, if work on the
railroad is begun at any moment.

It is also understood that Mr. Heinze
is contemplating building a railroad from
Trail to Robson this winter. The mat-
ter has been under advisement for some
time, but according to the best infor-
mation we have been able to get no decision
has yet been arrived at. No one need be
as surprised, however, if work on the
railroad is begun at any moment.

It is also understood that Mr. Heinze
is contemplating building a railroad from
Trail to Robson this winter. The mat-
ter has been under advisement for some
time, but according to the best infor-
mation we have been able to get no decision
has yet been arrived at. No one need be
as surprised, however, if work on the
railroad is begun at any moment.

It is also understood that Mr. Heinze
is contemplating building a railroad from
Trail to Robson this winter. The mat-
ter has been under advisement for some
time, but according to the best infor-
mation we have been able to get no decision
has yet been arrived at. No one need be
as surprised, however, if work on the
railroad is begun at any moment.

It is also understood that Mr. Heinze
is contemplating building a railroad from
Trail to Robson this winter. The mat-
ter has been under advisement for some
time, but according to the best infor-
mation we have been able to get no decision
has yet been arrived at. No one need be
as surprised, however, if work on the
railroad is begun at any moment.

ON COLUMBIA HILL

One After Another of Its Claims Are Making Mines.

MASCOT'S FINE SHOWING

No Property in the Camp Has Developed More Ore With the Same Amount of Work—Columbia and Kootenay and Iron Colt.

The recent developments on Columbia hill promise to make it a famous landmark in the history of mining. Readers of THE MINER have been kept pretty well informed of the progress of work on the Kootenay and Columbia. There is no longer any doubt as to the great extent and good grade of the ore in these two mines. The ore chute opened by the tunnel now being run on the Kootenay is one of the largest yet found in the camp. This tunnel is just now passing into the ground of the Columbia and is still in ore.

Just south of the Kootenay lies the Mascot, belonging to the Big Three company. It is safe to say that no property in the camp has such a showing made in so short a time. A tunnel known as the Eldorado tunnel is now in nearly 100 feet and is in solid ore. A shaft on the same vein but higher up the hill, is now down about 40 feet and has five and a half feet of ore. Work has been commenced on a ledge still further north and here the ore has already been found, assays as high as \$12 having been had at the very beginning. It is now pretty certain the Mascot is going to be a great mine.

The history of the Iron Colt is well known. It adjoins the west end of the Columbia and catches at least one of the Columbia veins. It must be a big one, for the shaft of the Iron Colt has been in solid ore for over a month. Just how wide the ore body is cannot be told now, for no crosscut has been made and will not be made till the 100-foot level is reached. The finding of so much ore on Columbia hill so near the surface has added greatly to the interest felt in other properties on the hill, such as the Alberta, St. Lawrence, North Star and the Belle Fraction. The ore found in all these claims is strikingly similar in appearance. It is not like any other ore in the camp. It is lighter in color than the ore on Red Mountain, and has characteristic seams of calc-spar running through it. It evidently belongs to a distinct formation peculiar to itself so far as this camp is concerned. It can be recognized at a glance by those familiar with the ores of the camp.

Columbia hill will soon be a very busy place. The drifts of the Big Trail Mining company's compressor are already at work in the Kootenay tunnel. A line of pipe is to be run from the same compressor to the Mascot workings, and drills put to work there, and another line is to be run over to the Iron Colt and drills set going in the shaft, and in a new tunnel to be started down the hill for the purpose of crosscutting and connecting with the shafting. This same line of pipe is to be extended to the Iron Horse where three drills are to be used. It is not announced that power drills are yet to be placed on the Alberta, but no doubt they will be soon. No work is at present being done on the St. Lawrence, the North Star or the Belle, but in all probability these claims will not long remain idle.

NEW DENVER NEWS.

Ledge: The C.P.R. will build a first class steamboat on Slocan Lake as soon as the material can be brought in. It is evidently reaching after the trade of this great district and means business, as the new boat will be modern in every particular.

Evans, McIvor Campbell and the other Vancouver people who have the Corinth group of eight claims under bond, intend to push development this winter. All the properties are to be crown granted. Claims are now being built at the Wild Goose, and Al Behne with a force of 15 men will soon be making the rock fly.

Charles Sandison has bonded the Titbits and Edmondson to James McDowell for \$25,000, 10 per cent cash and the balance on the usual terms. These claims carry gold and silver and are situated on Ten Mile creek, about three miles from the lake. A 100-foot tunnel will be run as speedily as possible.

The companies working the Wakefield, Thompson and Fisher Maiden groups are in need of a sleigh road so that they can ship ore this winter. The road would be about five miles in length and cost about \$2,000. It would run from Silverton to the mouth of Finlay creek. Dave Bremner goes to Nelson this week to place the case before Fitzstubs and ask for government aid in the matter.

Twenty tons of ore recently shipped from the Two Friends to Tacoma went 276 ounces in silver and 38 per cent lead. This is \$160 a ton more than the freight and shipment cost. Another car of ore will be shipped this week, which will leave 60 tons above ground at the mine. During the winter this property will ship 200 tons a month. The rawhide trail will be finished in a few days. The Two Friends is evidently a bonanza for its owners.

The stock of the Bondholder has been advanced to 15 cents and may reach 25 cents before very long. At the property 22 men are working, and it is expected that the first shipment of ore will be sent out this month. Regular shipments will be kept up all winter. The best showing of the group is on the Lone Star, which has not been touched yet. On the Finlay drifts has commenced both ways from the bottom of the 90-foot shaft. The shaft is being pushed downward as rapidly as possible and it is intended to drift from it at every 60 feet in order to supply plenty of stopping ground. On the Bondholder a crosscut tunnel is being run which will tap the lead in about 10 days. Judging from appearances and reports the Bondholder group will become one of the leading properties in the Slocan. Its lead can be traced across 15 claims.

The development work so far on the Currie group consists of a shaft and winze to a depth of 100 feet, with drifts

east and west, 125 feet, all showing ore that it is estimated will average \$100 to the ton. The company is evidently satisfied that it has a bonanza and intend to push the work on it as rapidly as possible. A working shaft 529 in the clear has been commenced and will be sunk 500 feet. It is expected that the ledge will be struck at a perpendicular depth of 130 feet, giving backs on the incline of the ledge 290 feet. At the 130-foot station in this shaft drifts will be run east and west. A hoisting plant to be run by water power has been ordered from McGillivray's Iron Works, New Westminster, which will be in position by Christmas. It is the intention of the company to erect a 150-ton concentrator and have it grinding by next April. The company also has a tunnel driven on the Silverton Boy, a claim about three miles up Four Mile creek. The ledge on this property is small, but has high grade ore, similar to what is found in the rich claims at the foot of Slocan lake.

KASLO NEWS NOTES.

Kootenian: Arthur Claque, whose curiosity to know the contents of Dr. Hendry's leather trunk, overcame his honesty and caused him to rip the same open with a jack-knife, was sentenced the other day to three months imprisonment. The sentence will probably be served out here, and as soon as the ugly wound in his hand, caused by the accidental discharge of a pistol in the aforesaid trunk, has healed, the prisoner will put in some time on the streets.

The Florence, a promising claim which adjoins the Ibez, or Bremner group, was sold this week to F. Steele for a company of eastern investors. R. F. Green was the seller. Mr. Steele will begin operations at once on his new property and will work in conjunction with the Ibez, which is being developed by another of Mr. Steele's companies. The Florence is a good property. It has the Ibez lead its full length, and there is a good showing of shipping ore.

A Forty-Year Old Grievance Removed.

In Bath, Ont., Chases Kidney Liver Pills are a standard remedy. Joseph Gardner, of this town, suffered for 40 years with indigestion and its ever present accompaniment—constipation and headache. K. & L. Pills are the only remedy that gave him relief. 25c. a box, of all druggists. One pill a dose.

Millinery and Dressmaking at Mrs. Gilson's on Spokane street. Children's Hats and Caps. 10-16-17

The Anglo-Canadian Mining Exchange, Ltd. Of Toronto, Ont.

GEORGE GURD, SECRETARY. Mining Stocks and Claims Bought and Sold.

Rossland Office: EAST COLUMBIA AVE., OPPOSITE BILLIARD HALL.

The Ivanhoe Gold Mining Co., Ltd. Ly.

Incorporated Under the Laws of British Columbia. Capital Stock, 1,000,000 Shares. Par Value \$1.00 Each. Treasury Stock, 300,000 Shares. Fully Paid and Non-Assessable.

Head Office, Rossland. : : Mine, "The Ivanhoe," Rossland.

DIRECTORS.

PRESIDENT, EDWARD N. BOUCHE, Esq., Mining Operator. Vice-PRESIDENT, J. S. CLUTE, Esq., Barrister-at-Law. SECRETARY, A. M. WHITESIDE, Esq. TREASURER, D. CAMPBELL, Esq., M. D. D. W. HIGGINS, M. F. P., Speaker Legislative Assembly, B. C. J. F. TRAVERS, Esq., Hardware Merchant. C. M. CARPENTER, Esq., Capitalist.

Description.

The Ivanhoe mine is an 1894 location and was purchased by the company June 10, 1896. It is fully paid for, the former owners giving the company a clear title. A certificate of improvements will at once be applied for. Since its purchase the mine has been developed under the supervision of the president, the stockholders furnishing the funds. The Ivanhoe is situated on Sophie Mountain near the famous O. K. mine and within one-half mile of the Red Mountain Railway, which affords admirable transportation facilities.

The Ledge and Ore.

The shaft is down 85 feet and a crosscut tunnel has been driven in 100 feet to the ledge and connected with the shaft. Eighteen inches of ore have been opened up in the bottom of the shaft. The ore is the ordinary iron sulphide streaked with grey quartz. Assays show from \$2.50 to \$21 in gold, a probable average being about \$10 per ton. The ledge is five feet wide and the walls well defined. R. G. McConnell, of the Dominion geological survey, who examined the property pronounced the vein a true fissure.

A Good Investment.

Stock in the Ivanhoe is a good investment because: 1. It has a well defined fissure vein and the ore assays well. 2. The mine is being actively worked under the direction of the President, a practical man. 3. No stock was offered until the directors were satisfied they had a prospective mine. 4. The personnel of the company guarantees that the proceeds of the sale of Treasury stock will be used for development purposes only. 5. The mine is a tunnel proposition and no expensive machinery will be required. 6. There are no salaried officers to pay.

Shares.

A block of 50,000 shares of treasury stock is now offered at the extremely low price of 5 cents per share. For shares, prospectus or further information apply to

A. M. WHITESIDE, Secretary, Rossland. Or THE REDDIN-JACKSON, CO., Ltd. Ly., Rossland.

Reindeer BRAND Condensed Milk. THE RICHEST IN CREAM.

BIG MONEY

Has been made in Rossland mining stocks. Lots of money will be made in stocks in the future.

In Real Estate

Not a single investor has lost a cent. We have sold hundreds of lots and most of them have been sold since for double or treble what our clients paid for them.

SNAPS

This week we offer the following snaps:

- Business lot on Columbia Avenue, \$4,000, easy terms. Choice lot on Columbia Avenue, \$1,600 cash. Business lot on Columbia Avenue, \$4,300. Good business lot on Columbia Avenue, \$3,000 cash. Choice lot on Spokane Street, well rented, \$3,000, good terms. Beautiful corner lot for residence, \$400. Building and lot on St. Paul St., \$2,000. We recommend all the above as good buys.

Paterson, Johnson & Co.,

Real Estate, Mines, Stocks and Insurance. Columbia Ave., Opposite Miner Block, ROSSLAND.

THE ALF GOLD MINING COMPANY, Ltd. Ly.

Incorporated Under the Laws of British Columbia. Mine Located at Rossland, Trail Creek Gold Mining District, British Columbia.

Capitalization, \$1,000,000.

Shares par value \$1.00 each. Fully Paid and Non-Assessable. 250,000 shares have been placed in the hands of a reliable trustee, who is responsible for the proper return to the company of the proceeds of any sale made by him of such shares.

All other shares are now pooled in the hands of the same trustee, so that purchasers of above stock need have no fear of promoters offering private stock below the market price.

LLOYD HARRIS, Esq., Brantford and London, Eng., President. W. G. ELLIOTT, Contractor, Brantford, Ont., Vice-President. W. E. PHIN, Contractor, Brantford, Ont., Secretary-Treasurer.

Stockholders. (Shares Pooled.)

H. McK. Wilson, Q. C., Brantford; Robt. Scott, Esq., Prop. Victoria Wheel Works, Galt; U. M. Stanley, M. D., Brantford; Thos. Nihan, Esq., Steamboat Owner, St. Catharines; Thos. Woodruff, F. M., Brantford, Ont.; J. A. Smith, Esq., Broker, Rossland; D. J. Wasterous, Esq., Mfr., Brantford; H. King, Esq., Rossland.

BANKERS. BANK OF BRITISH NORTH AMERICA, Rossland, B. C. Offices, Rossland, B. C.

The Alf gold mine, was located April 17th 1895, recorded May 1st, 1895, and has since been purchased by the Alf Gold Mining Company, (Limited Liability). It has been surveyed, and is fully paid for. See government records at Rossland, B. C.

The Alf is situated in the South Belt of the Trail Creek district, about one mile from Rossland, B. C., and adjoins such well known properties as the Hill Top and Mayflower. Close to it also are such well known mines as the Curlew and Gopher, and not 1500 feet away are the Maid of Erin and B. E. Lee properties. We have a limited number of shares to offer at 10 cents. The price is subject to a advance without notice. For shares or further particulars call on or address

The Smith-Hewitt Company, P. O. Box 20, Rossland, B. C.

BRUSHES

For Painters, Varnishers, Kalaminters, Artists, etc., Household, Toilet and Stable Use.

MANUFACTURED BY CHAS. BOECKH & SONS, Always Reliable and as Represented. TORONTO, ONT.

Liftchild, Wilmot & Co. Mines and Mining Stocks.

Properties Investigated and Reported on. The Incorporating of Mines a Specialty.

REFERENCES: Bank of British North America, Victoria, B. C. Office 1 and 2 Zeigler Bk., Old National Bank Spokane, Wash. SPOKANE, SPOKANE, - WASH.

Spokane Drug Co. SPOKANE, WASH.

Carry the largest stock of goods in the Pacific Northwest. When in Spokane you can get anything that you wish in the Drug or Toilet line at the best price. Mail orders will receive prompt attention and as low price as if bought in person. Imported and Domestic perfumes, rubber goods and druggists sundries. Agents for Riggs' Rheumatic Remedy, the sure cure for rheumatism; guaranteed.

Wholesale Dealers In ASSAYERS' SUPPLIES.

CHAS. F. ROBBINS LEO M. LONG ROBBINS & LONG, ASSAYERS & CHEMISTS.

Table with 2 columns: Item, Price. Includes Copper, Gold, Silver, Lead, etc.

Ten or more samples from same party in any one month, 25 per cent off list prices. Five or more brought in at one time same discount. Special attention given to samples by mail.

OFFICE WITH REDDIN & JACKSON, ROSSLAND, B. C.

Diamonds, Watches, Jewelry.

The largest and most complete line in the Northwest.

Watch Repairing, Engraving. A SPECIALTY. MAIL ORDERS SOLICITED. GEORGE R. DODSON, Mohawk Block, Riverside Ave., Spokane.

LENZ & LEISER,

Importers of Foreign and Domestic DRY GOODS.

Gents' Furnishing Goods, etc. No. 9 and 11 Yates Street, Victoria, B.C.

THE MONTANA

Livery and Feed Stable

LAINNEAU & WILLIAMS, Props.

Best Saddle and Pack Horses in Town Always on Hand. Order Early. Telephone 6.

P. Burns,

Dealer in MEATS

AT ROSSLAND, TRAIL, NELSON, KASLO, PILOT BAY, THREE FORKS, AND SANDON.

Spokane St., - - - Rossland.

Wilson-Drumheller Packing Co.,

PAKERS OF THE "CHINOOK" BRAND OF Hams, Bacon, Pure Leaf Lard, Etc.

Mail orders have our prompt attention.

Great Prospects.

Good workmanship and close attention to every detail is the backbone of success in Watch Repairing. Give McCarter a trial. He will convince you of this. Satisfaction Guaranteed.

Alex. McCarter, Marsh's Assay Office.

Holland, Hott & Co.,

Wholesale and Retail LUMBER DEALERS,

Lath, Shingles, Doors, Windows, Mouldings, Etc.

SPOKANE, SPOKANE, - WASH.

VICTORY-TRIUMPH

Sophie Mountain Properties Which Promise to Make Rich Mines.

25 PER CENT. COPPER ORE

No Finer Looking Mineral Has Ever Been Brought to Rossland—Bogle and Macdonald Will Organize a Company to Work the Claims.

D. B. Bogle and A. R. Macdonald have secured an option on two very promising properties, the Victory and Triumph, on Sophie mountain, close to the international boundary line and on the slope towards Big Sheep creek. The Masnas has more than once referred to these properties, as one of the owners, C. Jeldness, has advised us from time to time of good reports from his partners. The claims cover ground which has been staked for several years past. One of them was originally known as the Sophie, from which the mountain got its name. They are about six miles from Rossland, due southwest of the town and within two or three miles of the Red Mountain railway.

It is the intention of Messrs. Bogle and Macdonald to incorporate a company at once to acquire and work these claims. A large amount of stock in the projected company has already been subscribed locally, so that there is little room for doubt that the option will be taken up in due course.

The showings on the two claims are very fine. On the Victory a good deal of work has been done. It has been about 40 feet long has been driven on the vein showing a solid body of iron sulphide ore which assays \$2 to \$4 in gold and 12 to 16 ounces in silver—very good values considering that the ledge has not yet been crosscut and the workings are only a few feet from the surface.

On the Triumph, however, much the best ore is found. This closely resembles the ore from the Colonna, being like it either a fine-grained copper pyrites with copper carbonate diffused through it or a solid red oxide of copper. This ore averages over 20 per cent in copper and from \$1 to \$2 in gold. It occurs in stringers from two to six inches in width which have forced their way to the surface through the caprock. The ledge appears to be very wide and is prospected only slightly on the surface. We shall miss our guess if we do not hear good accounts of these claims when work is begun on them in earnest.

MURPHY CREEK PROPERTIES.

C. W. Callahan Controls Four Groups And Will Open Them This Winter.

C. W. Callahan recently purchased four groups of claims on Murphy creek and already he has a force of 12 miners at work on them under the direction of J. J. Rafferty. The groups are known as the May Walker, Lazem, Capital Prize and Baltasna. But little work has been done on any of them except the May Walker on which a 60-foot crosscut tunnel has been driven, apparently over the vein. The surface indications on all these claims are very similar to the showings in the immediate vicinity of Rossland and no doubt overlie similar bodies of ore.

The May Walker group, consisting of three claims, namely, the May Walker, Elgin and St. Thomas, is situated on the middle fork of Murphy creek, about four miles from the Columbia river and about seven miles northwest of Rossland. It was discovered and staked in the latter part of July, 1895, by W. B. Hazlewood, John Kennedy and Sam McDonnell. A 60-foot tunnel was driven on the May Walker claim to tap the ledge some 50 feet from the surface, but before the vein could be reached operations were suspended for want of funds and no further development has since been carried on.

The Lazem group, which consists of three claims, namely, Annie No. 5 and Keystone No. 4 were discovered and staked by Thomas Conlon in the summer of 1895. On the Annie No. 5 is an open cut and tunnel of about 25 feet; on the Keystone No. 4 is a shaft 18 feet deep and on the Lazem a shaft of 18 feet, all of which show conclusively that the ore body is near at hand. Sufficient work has not been performed to determine the value of these prospects, but judging from the surface indications it is safe to presume that with further development they will ultimately become producers.

The Capital Prize is a group of three claims lying about one mile northwest of the May Walker group and consisting of the Capital Prize, Hazlewood and Fleetwood mineral claims. This ground was originally staked in 1895 by parties who failed to perform the assessments required, and on the 1st of June, 1896, the ground was staked again by W. B. Hazlewood, Henry Hake and John Kennedy. An immense ledge in diorite runs from the base to the summit of the mountain, upon which these claims lie. The mountain seems to be a vast bed of mineral; big dykes of iron are found, and small streaks of quartz cut through the diorite in numberless places. The claims are situated near the forks of Murphy creek.

The Baltasna and Alice B are situated near the head of Sheep creek, about five miles west of the Lazem group, and are connected by trail with the latter. The assessment work was performed on the Baltasna in July, 1896, at which time a valuable extension to that ground was taken up and called the Alice B. The Baltasna is in syenite and the ledge which is about 50 feet wide, runs clear through both claims and trends north, west and southeast. At a point about 150 feet east from where the assessment shaft was sunk some very fine rock has lately been discovered on the surface.

GOSSIP OF NELSON.

Nelson Tribune: The deal for the purchase of the Nonparcell group of mines in the Slocan has not been closed. W. C. McLean and his partners are not over anxious to sell.

It is understood that the Nelson, Fort Sheppard Railway company will shortly establish a passenger line to

Spokane Drug Co.

Spokane, Wash.

Largest stock of goods in the Pacific... Mail orders will receive prompt...

Wholesale Dealers in... MINERS' SUPPLIES.

ROSSLAND, LEO H. LONG

BBINS & LONG, CHEMISTS.

Table with 2 columns: Item, Price. Includes Sulphur, Antimony, Arsenic, Nickel, Cobalt, Coal Analysis.

WITH REDDIN & JACKSON, B. C.

Diamonds, Watches, Jewelry.

The largest and most complete line in the Northwest

Repairing, Engraving.

ALL ORDERS SOLICITED.

GEORGE R. DODSON,

Block, Riverside Ave., Spokane.

Z & LEISER,

Importers of Foreign and Domestic

RY GOODS.

Furnishing Goods, etc.

Victoria, B.C.

THE MONTANA

and Feed Stable

MEAU & WILLIAMS, Props.

le and Pack Horses in Town

ys on Hand. Order Early.

Telephone 6.

Promptly Atte. Jed To.

Burns,

Dealer in

MEATS

SLAND, TRAIL, NELSON,

LO, PILOT BAY, THREE

KS, AND SANDON.

St., Rossland.

Drumheller

g Co., Spokane, Wash.

PACKERS OF THE

"HINOOK"

BRAND OF

Macon, Pure Leaf Lard, Etc.

ers have our prompt attention.

at Prospects.

manship and close attention to every

backbone of success in Watch Repair

McCarte a trial. He will convince

Satisfaction Guaranteed.

ex. McCarter,

Marsh's Assay Office.

and, Hott & Co.,

Wholesale and Retail

UMBER

DEALERS,

Shingles, Doors, Windows,

Mouldings, Etc.

LANE, WASH.

VICTORY-TRIUMPH

Sophie Mountain Properties Which Promise to Make Rich Mines.

25 PER CENT. COPPER ORE

No Finer Looking Mineral Has Ever Been Brought to Rossland-Bogle and Macdonald Will Organize a Company to Work the Claims.

D. B. Bogle and A. R. Macdonald have secured an option on two very promising properties, the Victory and Triumph, on Sophie mountain, close to the international boundary line...

The showings on the two claims are very fine. On the Victory a good deal of work has been done. A tunnel about 40 feet long has been driven on the vein showing a solid body of iron sulphide...

On the Triumph, however, much the best ore is found. This closely resembles the ore from the Columbia, being like it either a fine-grained copper pyrites with copper carbonates diffused through it or a solid red oxide of copper.

MURPHY CREEK PROPERTIES. G. W. Callahan Controls Four Groups And Will Open Them This Winter. O. W. Callahan recently purchased four groups of claims, on Murphy creek, and already he has a force of 12 miners at work on them under the direction of J. J. Rafferty.

The May Walker group, consisting of three claims, namely, the May Walker, Elgin and St. Thomas, is situated on the middle fork of Murphy creek, about four miles from the Columbia river and about seven miles northwest of Rossland.

The Lazoo group, which consists of three claims, Lazoo, Annie No. 5 and Keystone No. 4 were discovered and staked by Thomas Conlon in the summer of 1886.

The Capital Prize is a group of three claims lying about one mile northeast of the May Walker group and consisting of the Capital Prize, Hazelwood and Fleetwood mineral claims.

The Baltrana and Alice B are situated near the head of Sheep creek, about five miles west of the Lazoo group, and are connected by trail with the latter.

GOSSIP OF NELSON. Nelson Tribune: The deal for the purchase of the Nonpall group of mines in the Slocan has not been closed.

tween Nelson and Wild Horse creek. Heretofore the company has charged the full rate to Salmon siding, but as there is considerable travel between Nelson and Wild Horse, it has been decided to give a better rate.

The Idle Mining company, operating in the Slocan near Three Forks, has elected the following directors: Charles S. Warren, J. C. Miller, E. T. Steele, R. S. Coe, Charles Litchfield, A. P. Curry, and H. C. Brown.

Saturday morning Dr. Arthur was fined a second \$50, with the alternative of two months in jail, for non-compliance with the sanitary regulations in respect to his residence on Victoria street.

The Alhambra Gold and Copper Mining company is pushing development upon the Francis J. A shaft was sunk, but at 30 feet it went through the ledge. A drift was then commenced running in on the ledge.

Two groups of free milling prospects at the head of Forty Nine creek were bonded last week through Rossland brokers. The particulars were not obtainable.

The Arlington, a mining claim on the North Fork of Salmon river, has been sold to J. E. Jackson and his associates for a figure which the purchasers declined to give out. The claim was owned by W. L. Boyd, A. W. Boyd and W. H. Hurlbut.

THE REDDIN-JACKSON CO., Ltd. Brokers, Rossland.

G. A. Pounder, Pres. M. O. Tibbits, Sec'y.

The Silver Bell Mining Company.

Assays from surface ore: \$24.35, \$42.96, \$42.29, \$53.99, \$54.30, \$51.90, \$85.26. On October 26 average sample assay \$103.14.

Situated two miles from Rossland, B. C., has good shipping facilities and all other conditions favorable for a paying mine.

Price on first block of Treasury Stock now 7 1/2 cents per share, subject to raise without notice.

(Note.—Before purchasing Rossland residents and visitors are invited to call at the company's office and a representative will gladly show them the property.)

The Silver Bell Mining Company, Rossland, B. C.

McGAW & WINNETT, Proprietors.

QUEEN'S HOTEL

One of the largest and most comfortable hotels in the Dominion of Canada, being adjacent to the lake, commands a splendid view of Toronto Bay and Lake Ontario.

THE QUEEN'S has been liberally patronized by royalty and nobility during their visits to Toronto, and among those who have honored it with their patronage are: His Imperial Highness the Grand Duke Alexis of Russia; Their Royal Highnesses Prince Leopold, Prince George, Princess Louise and the Duke and Duchess of Connaught; the Marquis of Lorne, the Earl and Countess of Dufferin, the Marquis and Marchioness of Lansdowne, Lord and Lady Stanley of Preston, the Earl and Countess of Aberdeen and the best families.

TORONTO, CANADA.

McLennan, McFeely & Co., Ltd.

122 Cordova St., Vancouver, B. C.

WHOLESALE DEALERS IN MINERS' SUPPLIES, STEEL, IRON, DYNAMITE, STEEL CABLES, ROPE, PLATE AND WINDOW GLASS, STOVES, ETC.

"ONE COMPANY, MANY MINES." No one gold mine equal to this as an investment. It has all the elements essential to a dividend earning corporation.

BRITISH CANADIAN GOLD FIELDS

Exploration, Development and Investment Co., Ltd.

Of Toronto, Spokane, Victoria and London, Eng.

Capital, \$2,500,000.

In shares of \$1 each, of which nearly 2,000,000 are in the treasury.

President, Hon. G. C. McKINDERY, Toronto. Vice-President, Dr. W. T. STUART, Toronto.

Secretary, FRANK A. HALL, Esq., Accountant, Toronto.

A superintendent of mines and permanent assayer is attached to the company. Local Manager, Spokane, E. J. WEBSTER, Esq.; General Eastern Manager, CHAS. B. MURRAY; General Western Manager, HERBERT CUTHBERT.

The following gentlemen are also stockholders and subscribers: Lieut.-Col. the Hon. E. G. Prior, C.E., M.F., A. D. C. Victoria, B. C.; T. Sutherland Stayer, Esq., Dir. Imperial Bank, Dir. Trust & Loan Co., Toronto.

Hudson Murray, Esq., Q. C., Toronto. Major Wilkes, Brantford. David Morrice, Esq., Supt. of Terminals G. T. R., Toronto. W. H. Wallbridge, barrister, Toronto.

S. Bassett, Esq., Royal Oil Company, Toronto. Prof. Henry Montgomery, late supt. mining dept. state university, Utah. Walter Tallman, Esq., Beamsville Pressed Brick & Terra Cotta Co. T. Millman, Esq., M. D., Toronto. A. Chisholm, Esq., Oakville. J. A. Ellis, Esq., Architect, Toronto.

THE OBJECTS OF THE COMPANY are, briefly, to organize capital for the development of valuable prospects in British Columbia and other parts of this country. The company will purchase prospects and mines on their own behalf and for clients. They will develop prospects and for clients. They will develop prospects and for clients.

THE OBJECTS OF THE COMPANY are, briefly, to organize capital for the development of valuable prospects in British Columbia and other parts of this country. The company will purchase prospects and mines on their own behalf and for clients. They will develop prospects and for clients.

THE OBJECTS OF THE COMPANY are, briefly, to organize capital for the development of valuable prospects in British Columbia and other parts of this country. The company will purchase prospects and mines on their own behalf and for clients. They will develop prospects and for clients.

THE OBJECTS OF THE COMPANY are, briefly, to organize capital for the development of valuable prospects in British Columbia and other parts of this country. The company will purchase prospects and mines on their own behalf and for clients. They will develop prospects and for clients.

THE OBJECTS OF THE COMPANY are, briefly, to organize capital for the development of valuable prospects in British Columbia and other parts of this country. The company will purchase prospects and mines on their own behalf and for clients. They will develop prospects and for clients.

THE OBJECTS OF THE COMPANY are, briefly, to organize capital for the development of valuable prospects in British Columbia and other parts of this country. The company will purchase prospects and mines on their own behalf and for clients. They will develop prospects and for clients.

THE OBJECTS OF THE COMPANY are, briefly, to organize capital for the development of valuable prospects in British Columbia and other parts of this country. The company will purchase prospects and mines on their own behalf and for clients. They will develop prospects and for clients.

THE OBJECTS OF THE COMPANY are, briefly, to organize capital for the development of valuable prospects in British Columbia and other parts of this country. The company will purchase prospects and mines on their own behalf and for clients. They will develop prospects and for clients.

THE OBJECTS OF THE COMPANY are, briefly, to organize capital for the development of valuable prospects in British Columbia and other parts of this country. The company will purchase prospects and mines on their own behalf and for clients. They will develop prospects and for clients.

THE OBJECTS OF THE COMPANY are, briefly, to organize capital for the development of valuable prospects in British Columbia and other parts of this country. The company will purchase prospects and mines on their own behalf and for clients. They will develop prospects and for clients.

THE OBJECTS OF THE COMPANY are, briefly, to organize capital for the development of valuable prospects in British Columbia and other parts of this country. The company will purchase prospects and mines on their own behalf and for clients. They will develop prospects and for clients.

THE OBJECTS OF THE COMPANY are, briefly, to organize capital for the development of valuable prospects in British Columbia and other parts of this country. The company will purchase prospects and mines on their own behalf and for clients. They will develop prospects and for clients.

THE OBJECTS OF THE COMPANY are, briefly, to organize capital for the development of valuable prospects in British Columbia and other parts of this country. The company will purchase prospects and mines on their own behalf and for clients. They will develop prospects and for clients.

THE OBJECTS OF THE COMPANY are, briefly, to organize capital for the development of valuable prospects in British Columbia and other parts of this country. The company will purchase prospects and mines on their own behalf and for clients. They will develop prospects and for clients.

THE OBJECTS OF THE COMPANY are, briefly, to organize capital for the development of valuable prospects in British Columbia and other parts of this country. The company will purchase prospects and mines on their own behalf and for clients. They will develop prospects and for clients.

THE OBJECTS OF THE COMPANY are, briefly, to organize capital for the development of valuable prospects in British Columbia and other parts of this country. The company will purchase prospects and mines on their own behalf and for clients. They will develop prospects and for clients.

THE OBJECTS OF THE COMPANY are, briefly, to organize capital for the development of valuable prospects in British Columbia and other parts of this country. The company will purchase prospects and mines on their own behalf and for clients. They will develop prospects and for clients.

THE OBJECTS OF THE COMPANY are, briefly, to organize capital for the development of valuable prospects in British Columbia and other parts of this country. The company will purchase prospects and mines on their own behalf and for clients. They will develop prospects and for clients.

THE OBJECTS OF THE COMPANY are, briefly, to organize capital for the development of valuable prospects in British Columbia and other parts of this country. The company will purchase prospects and mines on their own behalf and for clients. They will develop prospects and for clients.

THE OBJECTS OF THE COMPANY are, briefly, to organize capital for the development of valuable prospects in British Columbia and other parts of this country. The company will purchase prospects and mines on their own behalf and for clients. They will develop prospects and for clients.

THE OBJECTS OF THE COMPANY are, briefly, to organize capital for the development of valuable prospects in British Columbia and other parts of this country. The company will purchase prospects and mines on their own behalf and for clients. They will develop prospects and for clients.

The Buffalo Gold Mining Co.

Trail Creek, British Columbia.

Buffalo, Ontario, Great Britain No. 1.

Comprising Three Full Claims

Capitalization 1,000,000 Shares.

Par Value \$1.00 Each. Stock Fully Paid and Non-Assessable.

INCORPORATED UNDER THE LAWS OF THE PROVINCE OF BRITISH COLUMBIA, COMPANIES ACT, 1880, AND AMENDING ACTS.

Main Office, Rossland.

Mine, O. K. Mountain, Rossland.

OFFICERS.

D. CAMPBELL, M. D., PRESIDENT. C. M. CARPENTER, TREASURER.

W. J. MERRYWEATHER, VICE-PRESIDENT. A. M. WHITESIDE, SECRETARY.

The Buffalo Gold Mining Company have acquired and paid for in full three claims. The Buffalo, Ontario and Great Britain No. 1, each 1,500 feet square, are situated on O. K. Mountain, about three-quarters of a mile from the famous O. K. the great free milling property of Trail Creek, and about three miles from the town of Rossland.

On the Ontario only prospecting work has been done, consisting of stripping a fine ledge which crops out through the claim.

On the Great Britain No. 1 there is a white quartz lead running through the property from which free gold has been obtained. This is confidently expected to prove up well when further work has been done.

The Red Mountain Railroad will run about a mile from these claims, making cheap transportation a great factor in the development.

Taking everything into consideration, having three full claims, the numerous ledges (especially the free milling ledge), cheap transportation, the stock in this company should prove a paying investment and well worthy of your attention.

Four men are now working and more will be added to keep up quick and continuous development.

A limited number of shares of the treasury stock will be placed on the market at the remarkably low price of 5 cents, and no more will be sold at this price after the first issue.

THE REDDIN-JACKSON CO., Ltd. Brokers, Rossland.

G. A. Pounder, Pres. M. O. Tibbits, Sec'y.

The Silver Bell Mining Company.

Assays from surface ore: \$24.35, \$42.96, \$42.29, \$53.99, \$54.30, \$51.90, \$85.26. On October 26 average sample assay \$103.14.

Situated two miles from Rossland, B. C., has good shipping facilities and all other conditions favorable for a paying mine.

Price on first block of Treasury Stock now 7 1/2 cents per share, subject to raise without notice.

(Note.—Before purchasing Rossland residents and visitors are invited to call at the company's office and a representative will gladly show them the property.)

The Silver Bell Mining Company, Rossland, B. C.

McGAW & WINNETT, Proprietors.

QUEEN'S HOTEL

One of the largest and most comfortable hotels in the Dominion of Canada, being adjacent to the lake, commands a splendid view of Toronto Bay and Lake Ontario.

THE QUEEN'S has been liberally patronized by royalty and nobility during their visits to Toronto, and among those who have honored it with their patronage are: His Imperial Highness the Grand Duke Alexis of Russia; Their Royal Highnesses Prince Leopold, Prince George, Princess Louise and the Duke and Duchess of Connaught; the Marquis of Lorne, the Earl and Countess of Dufferin, the Marquis and Marchioness of Lansdowne, Lord and Lady Stanley of Preston, the Earl and Countess of Aberdeen and the best families.

TORONTO, CANADA.

McLennan, McFeely & Co., Ltd.

122 Cordova St., Vancouver, B. C.

WHOLESALE DEALERS IN MINERS' SUPPLIES, STEEL, IRON, DYNAMITE, STEEL CABLES, ROPE, PLATE AND WINDOW GLASS, STOVES, ETC.

"ONE COMPANY, MANY MINES." No one gold mine equal to this as an investment. It has all the elements essential to a dividend earning corporation.

BRITISH CANADIAN GOLD FIELDS

Exploration, Development and Investment Co., Ltd.

Of Toronto, Spokane, Victoria and London, Eng.

Capital, \$2,500,000.

In shares of \$1 each, of which nearly 2,000,000 are in the treasury.

President, Hon. G. C. McKINDERY, Toronto. Vice-President, Dr. W. T. STUART, Toronto.

Secretary, FRANK A. HALL, Esq., Accountant, Toronto.

A superintendent of mines and permanent assayer is attached to the company. Local Manager, Spokane, E. J. WEBSTER, Esq.; General Eastern Manager, CHAS. B. MURRAY; General Western Manager, HERBERT CUTHBERT.

The following gentlemen are also stockholders and subscribers: Lieut.-Col. the Hon. E. G. Prior, C.E., M.F., A. D. C. Victoria, B. C.; T. Sutherland Stayer, Esq., Dir. Imperial Bank, Dir. Trust & Loan Co., Toronto.

Hudson Murray, Esq., Q. C., Toronto. Major Wilkes, Brantford. David Morrice, Esq., Supt. of Terminals G. T. R., Toronto. W. H. Wallbridge, barrister, Toronto.

S. Bassett, Esq., Royal Oil Company, Toronto. Prof. Henry Montgomery, late supt. mining dept. state university, Utah. Walter Tallman, Esq., Beamsville Pressed Brick & Terra Cotta Co. T. Millman, Esq., M. D., Toronto. A. Chisholm, Esq., Oakville. J. A. Ellis, Esq., Architect, Toronto.

THE OBJECTS OF THE COMPANY are, briefly, to organize capital for the development of valuable prospects in British Columbia and other parts of this country. The company will purchase prospects and mines on their own behalf and for clients. They will develop prospects and for clients.

THE OBJECTS OF THE COMPANY are, briefly, to organize capital for the development of valuable prospects in British Columbia and other parts of this country. The company will purchase prospects and mines on their own behalf and for clients. They will develop prospects and for clients.

THE OBJECTS OF THE COMPANY are, briefly, to organize capital for the development of valuable prospects in British Columbia and other parts of this country. The company will purchase prospects and mines on their own behalf and for clients. They will develop prospects and for clients.

THE OBJECTS OF THE COMPANY are, briefly, to organize capital for the development of valuable prospects in British Columbia and other parts of this country. The company will purchase prospects and mines on their own behalf and for clients. They will develop prospects and for clients.

THE OBJECTS OF THE COMPANY are, briefly, to organize capital for the development of valuable prospects in British Columbia and other parts of this country. The company will purchase prospects and mines on their own behalf and for clients. They will develop prospects and for clients.

THE OBJECTS OF THE COMPANY are, briefly, to organize capital for the development of valuable prospects in British Columbia and other parts of this country. The company will purchase prospects and mines on their own behalf and for clients. They will develop prospects and for clients.

THE OBJECTS OF THE COMPANY are, briefly, to organize capital for the development of valuable prospects in British Columbia and other parts of this country. The company will purchase prospects and mines on their own behalf and for clients. They will develop prospects and for clients.

THE OBJECTS OF THE COMPANY are, briefly, to organize capital for the development of valuable prospects in British Columbia and other parts of this country. The company will purchase prospects and mines on their own behalf and for clients. They will develop prospects and for clients.

THE OBJECTS OF THE COMPANY are, briefly, to organize capital for the development of valuable prospects in British Columbia and other parts of this country. The company will purchase prospects and mines on their own behalf and for clients. They will develop prospects and for clients.

THE OBJECTS OF THE COMPANY are, briefly, to organize capital for the development of valuable prospects in British Columbia and other parts of this country. The company will purchase prospects and mines on their own behalf and for clients. They will develop prospects and for clients.

THE OBJECTS OF THE COMPANY are, briefly, to organize capital for the development of valuable prospects in British Columbia and other parts of this country. The company will purchase prospects and mines on their own behalf and for clients. They will develop prospects and for clients.

THE OBJECTS OF THE COMPANY are, briefly, to organize capital for the development of valuable prospects in British Columbia and other parts of this country. The company will purchase prospects and mines on their own behalf and for clients. They will develop prospects and for clients.

THE OBJECTS OF THE COMPANY are, briefly, to organize capital for the development of valuable prospects in British Columbia and other parts of this country. The company will purchase prospects and mines on their own behalf and for clients. They will develop prospects and for clients.

THE OBJECTS OF THE COMPANY are, briefly, to organize capital for the development of valuable prospects in British Columbia and other parts of this country. The company will purchase prospects and mines on their own behalf and for clients. They will develop prospects and for clients.

THE OBJECTS OF THE COMPANY are, briefly, to organize capital for the development of valuable prospects in British Columbia and other parts of this country. The company will purchase prospects and mines on their own behalf and for clients. They will develop prospects and for clients.

THE OBJECTS OF THE COMPANY are, briefly, to organize capital for the development of valuable prospects in British Columbia and other parts of this country. The company will purchase prospects and mines on their own behalf and for clients. They will develop prospects and for clients.

THE OBJECTS OF THE COMPANY are, briefly, to organize capital for the development of valuable prospects in British Columbia and other parts of this country. The company will purchase prospects and mines on their own behalf and for clients. They will develop prospects and for clients.

THE OBJECTS OF THE COMPANY are, briefly, to organize capital for the development of valuable prospects in British Columbia and other parts of this country. The company will purchase prospects and mines on their own behalf and for clients. They will develop prospects and for clients.

THE OBJECTS OF THE COMPANY are, briefly, to organize capital for the development of valuable prospects in British Columbia and other parts of this country. The company will purchase prospects and mines on their own behalf and for clients. They will develop prospects and for clients.

THE OBJECTS OF THE COMPANY are, briefly, to organize capital for the development of valuable prospects in British Columbia and other parts of this country. The company will purchase prospects and mines on their own behalf and for clients. They will develop prospects and for clients.

THE OBJECTS OF THE COMPANY are, briefly, to organize capital for the development of valuable prospects in British Columbia and other parts of this country. The company will purchase prospects and mines on their own behalf and for clients. They will develop prospects and for clients.

THE OBJECTS OF THE COMPANY are, briefly, to organize capital for the development of valuable prospects in British Columbia and other parts of this country. The company will purchase prospects and mines on their own behalf and for clients. They will develop prospects and for clients.

THE OBJECTS OF THE COMPANY are, briefly, to organize capital for the development of valuable prospects in British Columbia and other parts of this country. The company will purchase prospects and mines on their own behalf and for clients. They will develop prospects and for clients.

THE OBJECTS OF THE COMPANY are, briefly, to organize capital for the development of valuable prospects in British Columbia and other parts of this country. The company will purchase prospects and mines on their own behalf and for clients. They will develop prospects and for clients.

THE OBJECTS OF THE COMPANY are, briefly, to organize capital for the development of valuable prospects in British Columbia and other parts of this country. The company will purchase prospects and mines on their own behalf and for clients. They will develop prospects and for clients.

THE OBJECTS OF THE COMPANY are, briefly, to organize capital for the development of valuable prospects in British Columbia and other parts of this country. The company will purchase prospects and mines on their own behalf and for clients. They will develop prospects and for clients.

THE OBJECTS OF THE COMPANY are, briefly, to organize capital for the development of valuable prospects in British Columbia and other parts of this country. The company will purchase prospects and mines on their own behalf and for clients. They will develop prospects and for clients.

Watch the PHENIX

The Company Now Offers

International Gold-Copper Mining Co.,

Limited Liability.

Incorporated Under the Laws of British Columbia.

Capital Stock 1,000,000. Par Value \$1.00.

FULLY PAID AND NON-ASSESSABLE.

Treasury Stock 350,000 Shares.

TRUSTEES. A. C. Sinclair, R. C. McDonald and J. S. Patterson,
Rossland, B. C.

Head Office . . . Mine
Rossland, B. C. The Snowdrop.

Description of Property.

The Snowdrop is $\frac{3}{4}$ miles from Rossland in the South Belt. It is distant from the Crown Point about three-quarters of a mile. Adjoining it on the east is the Summit. A shaft on this claim shows a large ore body assaying \$12 per ton in gold. This vein runs through the Snowdrop. A site has been selected for a tunnel and work on the Snowdrop will be continued all winter.

Shares.

The First block of Stock is now selling at the low price of

One and a Half Cents per Share.

The second block will go on at the price of Five Cents per share.

For shares or further particulars call on or address

Wm. Bennison & Co.,

Mining Brokers, Sole Agents, . . Rossland, B. C.

Remittances may be made to the Manager of the Bank of British North America, Rossland.

The Western Extension

Of the north belt on Red Mountain in which is located the Annie Fraction embraces some of the best mines in the district.

Lookout Mountain

In the number and richness of its mines and prosecution of development work is keeping steady pace with its far famed brother, Red Mountain at Rossland.

Kootenay-London Mining Co., Ltd.

Incorporated Under the Laws of British Columbia.

CAPITAL STOCK 1,000,000 SHARES

Par Value \$1.00 Fully Paid and Non-Assessable.

Treasury 300,000 Shares.

OFFICERS. Wm. Bennison, President; W. A. Campbell, Vice-President; M. O. Tibbitts, Sec.-Treas.; J. W. Cover, Managing Director; Edward Pritchard, F. G. S., Consulting Engineer.

Head Office, Rossland, B. C.

Description of the Property.

The company owns the Annie Fraction and the Comet No. 2 mineral claims. The Annie Fraction is situated between the California, San Francisco and Black Bear, the latter of which is the property of the great Le Roi Mining & Smelting company and is the first western extension of the Le Roi mine. The vein of the Le Roi can be traced through the Annie Fraction and men at work on this property have tapped an ore chute at a depth of 40 feet from which assays gave returns of from \$14 to \$20.

The Comet No. 2 is a full claim, 1500 feet square, and lies about three miles north of Rossland. It has two strong well-defined ledges running through it. A prospecting shaft now down 10 feet shows nothing but vein matter the whole mass being well diffused with copper and iron pyrites. Assays averaging \$6 to \$8 have been obtained from this showing.

Shares.

The entire capital stock of the company excepting treasury shares has been pooled and placed in the hands of W. T. Oliver, manager of the Bank of British North America in Rossland, as trustee. The company now offers 50,000 shares of treasury stock at the low price of

Ten Cents a Share.

The proceeds will be used in purchasing machinery for the Annie Fraction.

For shares, prospectus or other information apply to

M. O. TIBBITTS, Secretary-Treasurer.

Or J. W. COVER, Managing Director.

Two Dollars a Year.

DU MARAIS' OPINION

Considers the Camp of Butte Most Similar to That of Rossland.

IMPRESSIONS FAVORABLE

Rossland Will Be a Great Low Grade Ore Camp With Smelters as Near the Mines as Sufficient Water Can Be Obtained.

Emile M. du Marais, who came to Rossland to make a report to the French government on the mineral resources of the Trail Creek camp, concluded his work this week and will go to Nelson and the Slovan country shortly. During his visit here M. du Marais has impressed himself on those who have had the pleasure of meeting him as a most painstaking, conscientious and capable mining man. His report will in some respects be the most complete ever made on this camp. It will be sent to the French minister of commerce and will be for the use of the French investing public.

The work of M. du Marais has been very extensive. He was first sent to the gold fields of northern Siberia and was there five months. Recently he has been in Montana and Colorado. After seeing the mines about Nelson and Ainsworth he will visit those about Sandon, and on Slovan lake, then go to California, Arizona and Mexico if time permits, returning to Paris next summer, after one more visit to Rossland and the Boundary country.

In order to obtain from M. du Marais such an expression of his views on the Trail Creek camp as he is at liberty to give to the public THE MINER submitted to him a number of questions with the request that he make the answers in writing, which he has had the courtesy to do. The questions and answers follow:

"What are your impressions of the camp—favorable or unfavorable?"

"Although the camp is a little new to give a definite opinion I can say that my impression is favorable. The camp seems to be remarkable for its extent and its powerful mineralization."

"Have you observed any other formation like that here?"

"Of course the formation has its own distinctive character, but it seems to me that the mining camp of Butte is the most similar to the Rossland camp."

"In what respect is this camp like Butte?"

"As in Butte the ore deposits are in wide fractures in the country rock and very often go through the walls impregnating the country rock. As in Butte the value in copper is rarely found near the surface but in Butte the rock is very alterable granite in which the feldspar may be decomposed and replaced by iron and copper pyrites, giving the enormous ore bodies of the Anaconda and Barus mines. In Rossland the rock being much harder it cannot be decomposed by water and the large ore body beyond the vein itself can be found only in the places where the rock is fractured. In Butte there is no gold—only silver; in Rossland the value is mostly in gold."

"Do you think we can successfully treat our low grade ores?"

"I think that the future of the camp is exactly in the low grade ores. Every year there is some improvement in the treatment of such ore. I hope that the new railroad from the Crown's Nest pass will be built very soon and bring at low price the fuel necessary for mining and smelting purposes. At that time the price of smelting will be largely reduced. It is very probable too that for very silicious and low grade ores some chemical process such as cyanide or chlorination will be successfully used. The reduction of the price of treatment will be the most important factor in the rapid development of the camp. For it seems to me that Rossland will become a large camp for low grade ore rather than a small camp for high grade ores."

"Will the tendency be to establish smelters in or near the camp?"

"With such low grade ore abundant in the camp the best place for treating seems to be the one nearest the mines with abundant supply of water at all seasons. I do not know if it is possible to bring to Rossland a sufficient quantity of water at reasonable expense. If not it is very easy to find on the banks of the Columbia river some good place, when the output of the camp will be too great for the Trail smelter to handle."

"Do you think French capital will be attracted to British Columbia?"

"French capitalists are a little slow to invest in new countries but they prefer the sure profits from low grade camps to the enormous but less certain profits of extraordinarily rich districts. The time may come, when a few more mines have paid dividends, when they will invest pretty largely."

I. X. L. GOES TO WORK.

One of Rossland's Free Gold Bonanzas Which Has Long Been Idle.

The famous I. X. L. mine, the first free milling property to be located in Rossland, is to be worked on a large scale. John S. Baker, of Tacoma is the principal owner and has just incorporated a company in Spokane to take over the property. Associated with him in the new company are Jacob Hoover, president of the Exchange National Bank, I. N. Peyton of the Le Roi mine, John H. Scott, general manager of the Wilkeson Coal & Coke company, Edward Bechin, also of Wilkeson and C. F. Ondin, of Montreal. The company is capitalized at \$1,000,000.

The I. X. L., as stated above was the first free milling proposition located in Rossland, having been staked in June 1891. It is adjoined on the west by the