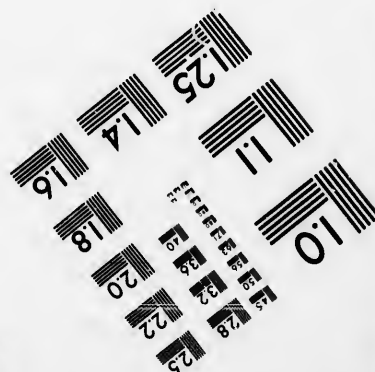
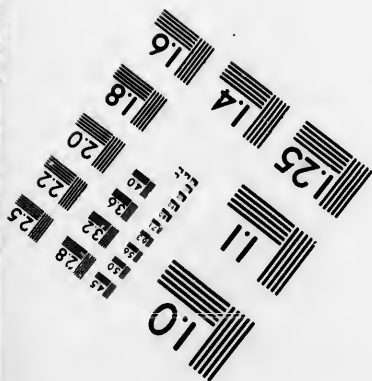
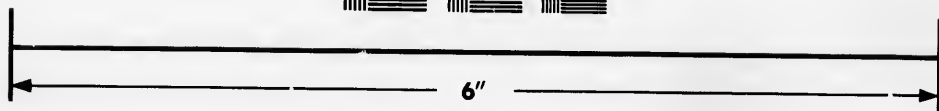
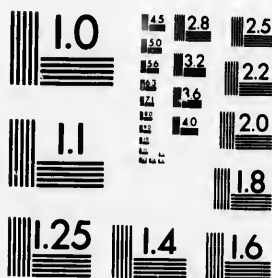


**IMAGE EVALUATION
TEST TARGET (MT-3)**



Photographic
Sciences
Corporation

23 WEST MAIN STREET
WEBSTER, N.Y. 14580
(716) 872-4503

**CIHM
Microfiche
Series
(Monographs)**

**ICMH
Collection de
microfiches
(monographies)**



Canadian Institute for Historical Microreproductions / Institut canadien de microreproductions historiques

© 1993

Technical and Bibliographic Notes / Notes techniques et bibliographiques

The Institute has attempted to obtain the best original copy available for filming. Features of this copy which may be bibliographically unique, which may alter any of the images in the reproduction, or which may significantly change the usual method of filming, are checked below.

L'Institut a microfilmé le meilleur exemplaire qu'il lui a été possible de se procurer. Les détails de cet exemplaire qui sont peut-être uniques du point de vue bibliographique, qui peuvent modifier une image reproduite, ou qui peuvent exiger une modification dans la méthode normale de filmage sont indiqués ci-dessous.

Coloured covers/
Couverture de couleur

Coloured pages/
Pages de couleur

Covers damaged/
Couverture endommagée

Pages damaged/
Pages endommagées

Covers restored and/or laminated/
Couverture restaurée et/ou pelliculée

Pages restored and/or laminated/
Pages restaurées et/ou pelliculées

Cover title missing/
Le titre de couverture manque

Pages discoloured, stained or foxed/
Pages décolorées, tachetées ou piquées

Coloured maps/
Cartes géographiques en couleur

Pages detached/
Pages détachées

Coloured ink (i.e. other than blue or black)/
Encre de couleur (i.e. autre que bleue ou noire)

Showthrough/
Transparence

Coloured plates and/or illustrations/
Planches et/ou illustrations en couleur

Quality of print varies/
Qualité inégale de l'impression

Bound with other material/
Relié avec d'autres documents

Continuous pagination/
Pagination continue

Tight binding may cause shadows or distortion along interior margin/
La reliure serrée peut causer de l'ombre ou de la distorsion le long de la marge intérieure

Includes index(es)/
Comprend un (des) index

Title on header taken from: /
Le titre de l'en-tête provient:

Blank leaves added during restoration may appear within the text. Whenever possible, these have been omitted from filming/
Il se peut que certaines pages blanches ajoutées lors d'une restauration apparaissent dans le texte, mais, lorsque cela était possible, ces pages n'ont pas été filmées.

Title page of issue/
Page de titre de la livraison

Caption of issue/
Titre de départ de la livraison

Masthead/
Générique (périodiques) de la livraison

Additional comments: /
Commentaires supplémentaires:

This copy is a photoreproduction.

This item is filmed at the reduction ratio checked below /
Ce document est filmé au taux de réduction indiqué ci-dessous.

10X	14X	18X	22X	26X	30X
<input type="checkbox"/>	<input type="checkbox"/>	<input type="checkbox"/>	<input checked="" type="checkbox"/>	<input type="checkbox"/>	<input type="checkbox"/>
12X	16X	20X	24X	28X	32X

The copy filmed here has been reproduced thanks to the generosity of:

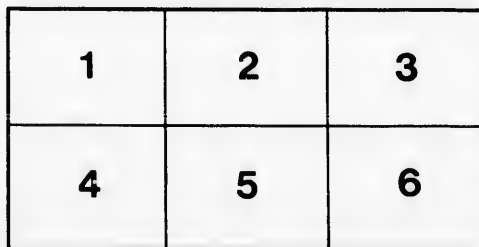
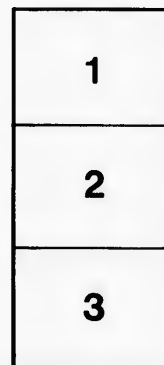
National Library of Canada

The images appearing here are the best quality possible considering the condition and legibility of the original copy and in keeping with the filming contract specifications.

Original copies in printed paper covers are filmed beginning with the front cover and ending on the last page with a printed or illustrated impression, or the back cover when appropriate. All other original copies are filmed beginning on the first page with a printed or illustrated impression, and ending on the last page with a printed or illustrated impression.

The last recorded frame on each microfiche shall contain the symbol \rightarrow (meaning "CONTINUED"), or the symbol ∇ (meaning "END"), whichever applies

Maps, plates, charts, etc., may be filmed at different reduction ratios. Those too large to be entirely included in one exposure are filmed beginning in the upper left hand corner, left to right and top to bottom, as many frames as required. The following diagrams illustrate the method:



L'exemplaire filmé fut reproduit grâce à la générosité de:

Bibliothèque nationale du Canada

Les images suivantes ont été reproduites avec le plus grand soin, compte tenu de la condition et de la netteté de l'exemplaire filmé, et en conformité avec les conditions du contrat de filmage.

Les exemplaires originaux dont la couverture en papier est imprimée sont filmés en commençant par le premier plat et en terminant soit par la dernière page qui comporte une empreinte d'impression ou d'illustration, soit par le second plat, selon le cas. Tous les autres exemplaires originaux sont filmés en commençant par la première page qui comporte une empreinte d'impression ou d'illustration et en terminant par la dernière page qui comporte une telle empreinte.

Un des symboles suivants apparaîtra sur la dernière image de chaque microfiche, selon le cas: le symbole \rightarrow signifie "A SUIVRE", le symbole ∇ signifie "FIN".

Les cartes, planches, tableaux, etc., peuvent être filmés à des taux de réduction différents. Lorsque le document est trop grand pour être reproduit en un seul cliché, il est filmé à partir de l'angle supérieur gauche, de gauche à droite, et de haut en bas, en prenant le nombre d'images nécessaire. Les diagrammes suivants illustrent la méthode.

IN DARKEST CANADA!

What the **GRANDE LIGNE MISSION** is doing to
Lighten the Darkness most Dense.

TO THE BAPTISTS OF THE STATE OF MAINE:

Congratulation.—That this Mission has a strong hold on the affections of the Baptists of Maine is evidenced by their generous response to our appeal last year. It is with pleasure we report substantial progress in piercing the superstition and ignorance of Quebec, that portion of our fair land which, because of the blighting shadow of Rome, may well be called "Darkest Canada." Eighteen faithful missionaries, eleven men and seven women, are patiently, persistently, faithfully working, and by visits, by teaching, by prayer, by cheerful example, are bringing many "out of darkness into light."

A FIRE THAT WARMED HEARTS.—Shortly after our appeal last year, fire destroyed a considerable portion of our School Buildings at Grande Ligne; but the calamity was a blessing in disguise, for it stirred up strong affections in many quarters, and it is cheering to know that the Mission never had a warmer place in the hearts of its friends than now.

PROGRESS, PROSPECTS, PLANS.—The fire was followed by immediate work in re-building; and the added quarters give the school greater accommodation than it ever had. We can now board 132 pupils; and we are happy to report that the school is already *more than full*. These young people, many of them, will go out as missionaries to their benighted fellow-countrymen; and so the light shines and spreads. The numbers who have passed through the school are surprisingly large, nearly 5,000 all told, and we gratefully acknowledge God's saving grace in being able to report that 80 per cent. of them have been converted to God. They are scattered throughout Canada and the United States. Some of them now have charge of our own Mission Stations. The improvements and new school

buildings cost about \$25,000. All pronounced the buildings to be better than the cut represents them, and well adapted for school purposes; ventilation is good, rooms large and cheerful; abundant water is supplied from a spring, filtered through a reservoir on an elevation a quarter of a mile in rear of the buildings. Ever since the building is heated by hot water pipes, there is water through the building, also bath rooms and all modern conveniences. The kitchen and basement are models of neatness. Laundry and drying rooms are fitted up in the most convenient way. Some twenty-five of the rooms have been furnished by various churches and individuals, in addition to the public school, which has been beautifully furnished by the Brooklyn (N.Y.) Ladies' Association, and adorned with a large oil painting of Madame Feller, done by Mr.

ECONOMY.—When you remember that \$10,000 covers all expenses—salaries of eighteen missionaries, salaries of teachers, cost of boarding, and help in the school, you can see how far your money is made to go. We know of no other Mission in this country which does so much for so little. School fees, and free-will offerings of the French and English Churches, make up about one-third the yearly expenses. For the balance, we look to English-speaking friends for the work.

Through the missionaries and teachers, 1,000 people are reached several times every week by the Gospel. The work makes them free men and women in Christ Jesus.

WHERE?—The Mission School and one church are situated on the site where the Mission was founded about fifty years ago by the devoted Madame Feller, some five miles south of Montreal, about sixteen miles from the American border. Other churches of the Mission are scattered throughout the Province of Quebec.

When?—On the first Sunday in February. Collections will be taken in all the Baptist Churches of the Province that are interested in the work. Did you contribute last year? We trust you will this year also, and we hope you will be able to increase over last year. Double the

out \$25,000. All pronounced the buildings
the cut represents them, and well adapted
uses; ventilation is good, rooms large, airy
abundant water is supplied from a large
through a reservoir on an elevation about
feet in rear of the buildings. Every room
water pipes, there is water throughout
bath rooms and all modern conveniences.
basement are models of neatness, the
ing rooms are fitted up in the most modern
fifty-five of the rooms have been fitted up
ches and individuals, in addition to the
has been beautifully furnished by the
Ladies' Association, and adorned with a
of Madame Feller, done by Mr. Hatch.
When you remember that \$10,000 covers
aries of eighteen missionaries, salaries of
boarding, and help in the school, you will
money is made to go. We know of no
untry which does so much for so little.
free-will offerings of the French Mission
up about one-third the yearly expense;
we look to English-speaking friends of

missionaries and teachers, 1,000 people are
times every week by the Gospel which
men and women in Christ Jesus.
the Mission School and one church are
site where the Mission was founded over
the devoted Madame Feller, some thirty-
of Montreal, about sixteen miles from the
1. Other churches of the Mission are
out the Province of Quebec.

on the first Sunday in February
be taken in all the Baptist Churches of Maine
ed in the work. Did you contribute last
you will this year also, and we hope you
crease over last year. Double the amount

if you can. *Owing to enlarged expenditure and the
endorsement as yet yielding but little revenue, the need for
enlarged subscriptions to current expenses is urgent.*

WHY?—Why do we bring this work before you?
(1) Because it is a work which deeply affects the welfare
of all New England States. (2) Because it is God's work.
We know, from manifold tokens He has given all along for
more than fifty years, that He approves our methods.
(3) Because, if we do not Evangelize Romanists, they will
endeavor to deprive us of the sacred liberties of conscience,
of free speech, of Government, which, thanks to the services
and sacrifices of Baptists in past years, we now enjoy.
(4) Because of the need of the work, as shown by the
anxious cries for deliverance coming from those now in
bondage. Who will help them? The cry is to us who
are free.

As the Annual Meeting takes place on the 18th February,
it is desirable that this offering should be all in the
Treasurer's hands before that date, so as to appear in the
Annual Report.

Please enclose your offering in the enclosed envelope
and lay it on the Collection plate, on the day appointed for
the Special Offering for this Mission in the Baptist
Churches of the State of Maine.

Sunday, February 1st, 1891.

MONTREAL, Nov. 1890.

A. A. AYER, *Acting President.*

T. LAFLEUR, *Secretary.*

Remittances to be sent to

JOSEPH RICHARDS, *Treasurer,*

114 St. Peter Street, Montreal.

— ♦ —
*The undersigned Committee appointed at the Maine
Baptist Missionary Convention, to induce the Churches of
Maine to make an offering for the GRANDE LOUPE MISSION,
heartily endorse this circular, and recommend the offering
to be taken as requested.*

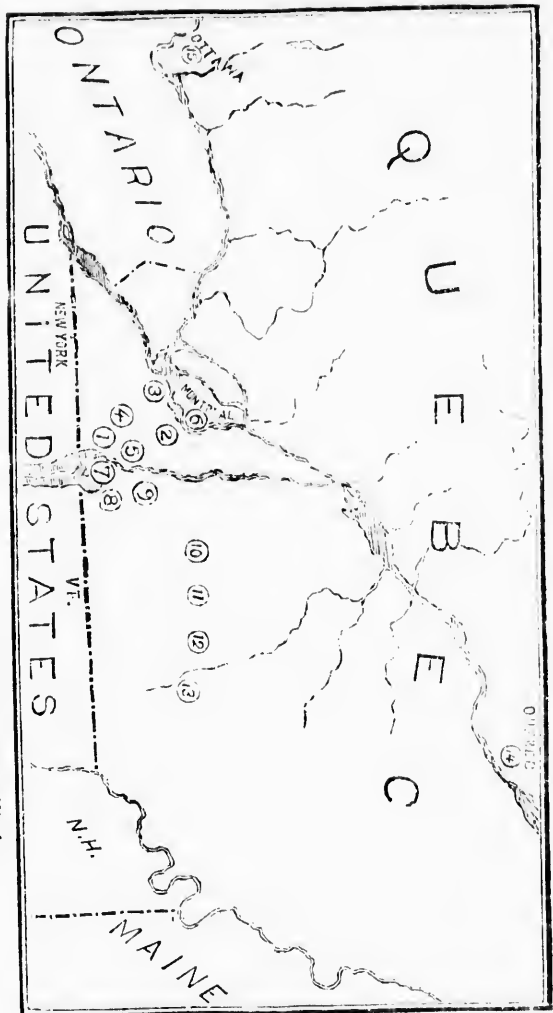
C. C. TILLEY.

A. T. DUNN.

M. GIDDINGS.

Wick A
1845-
1789

127



The following is a List of the Mission Stations of the Grande Ligne Mission :

- (1) Grand Haven,
- (2) St. Philippe,
- (3) St. Constant,
- (4) St. Michel,
- (5) St. Jean's,
- (6) Montreal,
- (7) Chateaufort,
- (8) St. Jean's,
- (9) St. Mary's,
- (10) St. Pie,
- (11) Lezton,
- (12) S. Edw.,
- (13) Sherbrooke,
- (14) Quebec,
- (15) Ottawa.

1-501

