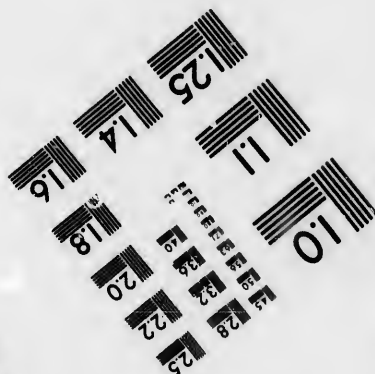
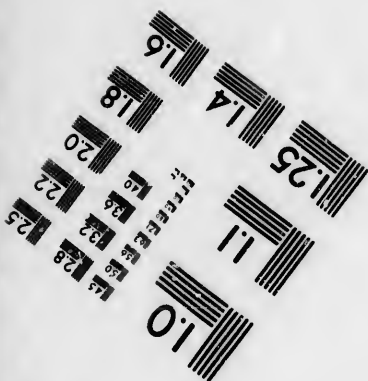
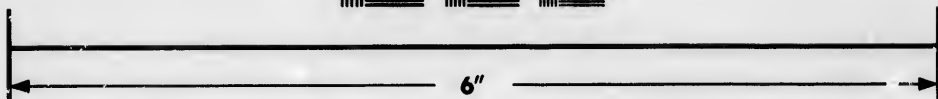
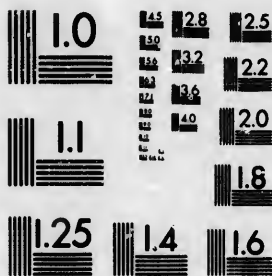


**IMAGE EVALUATION
TEST TARGET (MT-3)**



**Photographic
Sciences
Corporation**

23 WEST MAIN STREET
WEBSTER, N.Y. 14580
(716) 872-4503

1.5 1.8 2.0 2.2 2.5
2.8 3.2 3.6 4.0

**CIHM/ICMH
Microfiche
Series.**

**CIHM/ICMH
Collection de
microfiches.**



Canadian Institute for Historical Microreproductions / Institut canadien de microreproductions historiques

10
57

© 1986

Technical and Bibliographic Notes/Notes techniques et bibliographiques

The Institute has attempted to obtain the best original copy available for filming. Features of this copy which may be bibliographically unique, which may alter any of the images in the reproduction, or which may significantly change the usual method of filming, are checked below.

L'institut a microfilmé le meilleur exemplaire qu'il lui a été possible de se procurer. Les détails de cet exemplaire qui sont peut-être uniques du point de vue bibliographique, qui peuvent modifier une image reproduite, ou qui peuvent exiger une modification dans la méthode normale de filmage sont indiqués ci-dessous.

- Coloured covers/
Couvertures de couleur
- Covers damaged/
Couverture endommagée
- Covers restored and/or laminated/
Couverture restaurée et/ou pelliculée
- Cover title missing/
Le titre de couverture manque
- Coloured maps/
Cartes géographiques en couleur
- Coloured ink (i.e. other than blue or black)/
Encre de couleur (i.e. autre que bleue ou noire)
- Coloured plates and/or illustrations/
Planches et/ou illustrations en couleur
- Bound with other material/
Relié avec d'autres documents
- Tight binding may cause shadows or distortion along interior margin/
La reliure serrée peut causer de l'ombre ou de la distorsion le long de la marge intérieure
- Blank leaves added during restoration may appear within the text. Whenever possible, these have been omitted from filming/
Il se peut que certaines pages blanches ajoutées lors d'une restauration apparaissent dans le texte, mais, lorsque cela était possible, ces pages n'ont pas été filmées.

- Coloured pages/
Pages de couleur
- Pages damaged/
Pages endommagées
- Pages restored and/or laminated/
Pages restaurées et/ou pelliculées
- Pages discoloured, stained or foxed/
Pages décolorées, tachetées ou piquées
- Pages detached/
Pages détachées
- Showthrough/
Transparence
- Quality of print varies/
Qualité inégale de l'impression
- Includes supplementary material/
Comprend du matériel supplémentaire
- Only edition available/
Seule édition disponible
- Pages wholly or partially obscured by errata slips, tissues, etc., have been refilmed to ensure the best possible image/
Les pages totalement ou partiellement obscurcies par un feuillet d'errata, une pelure, etc., ont été filmées à nouveau de façon à obtenir la meilleure image possible.

- Additional comments: [Printed ephemera] 1 sheet (verso blank)
Commentaires supplémentaires:

This item is filmed at the reduction ratio checked below/
Ce document est filmé au taux de réduction indiqué ci-dessous.

10X	12X	14X	16X	18X	20X	22X	24X	26X	28X	30X	32X
								/			

This copy filmed here has been reproduced thanks to the generosity of:

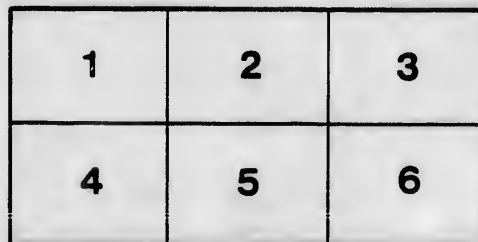
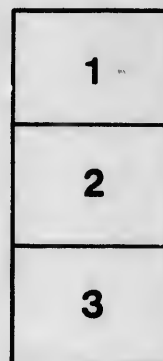
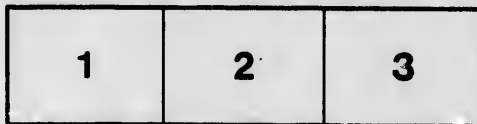
D. B. Weldon Library
University of Western Ontario
(Regional History Room)

The images appearing here are the best quality possible considering the condition and legibility of the original copy and in keeping with the filming contract specifications.

Original copies in printed paper covers are filmed beginning with the front cover and ending on the last page with a printed or illustrated impression, or the back cover when appropriate. All other original copies are filmed beginning on the first page with a printed or illustrated impression, and ending on the last page with a printed or illustrated impression.

The last recorded frame on each microfiche shall contain the symbol \rightarrow (meaning "CONTINUED"), or the symbol ∇ (meaning "END"), whichever applies.

Maps, plates, charts, etc., may be filmed at different reduction ratios. Those too large to be entirely included in one exposure are filmed beginning in the upper left hand corner, left to right and top to bottom, as many frames as required. The following diagrams illustrate the method:



L'exemplaire filmé fut reproduit grâce à la générosité de:

D. B. Weldon Library
University of Western Ontario
(Regional History Room)

Les images suivantes ont été reproduites avec le plus grand soin, compte tenu de la condition et de la netteté de l'exemplaire filmé, et en conformité avec les conditions du contrat de filmage.

Les exemplaires originaux dont la couverture en papier est imprimée sont filmés en commençant par le premier plat et en terminant soit par la dernière page qui comporte une empreinte d'impression ou d'illustration, soit par le second plat, selon le cas. Tous les autres exemplaires originaux sont filmés en commençant par la première page qui comporte une empreinte d'impression ou d'illustration et en terminant par la dernière page qui comporte une telle empreinte.

Un des symboles suivants apparaîtra sur la dernière image de chaque microfiche, selon le cas: le symbole \rightarrow signifie "À SUIVRE", le symbole ∇ signifie "FIN".

Les cartes, planches, tableaux, etc., peuvent être filmés à des taux de réduction différents. Lorsque le document est trop grand pour être reproduit en un seul cliché, il est filmé à partir de l'angle supérieur gauche, de gauche à droite, et de haut en bas, en prenant le nombre d'images nécessaire. Les diagrammes suivants illustrent la méthode.

Chancellor

OF

VALUATION

TOWN PROPERTIES

IN

STRATFORD

Pursuant to the Decree of the Court in a certain cause of Ward vs. Ward, and to the finding and decree of the Court at London thereunder, and with his approbation

PUBLIC A

Every Sale

OF

VALUABLE

PROPERTY

IN

ST. THOMAS.

of the Court of Chancery in a
finding and determination of the Master of the said
approbation, will be sold at

AUCTION

PUBLIC AUCTION

By Messrs. Rothwell & M

AT THEIR AUCTION ROOMS, IN THE

ON

SATURDAY, 11th DAY

At the hour of 12 o'clock noon, the following

That part of Lot number 13, in the 10th Concession of the
Commencing at the distance of 6 chains 66 2-3 links North-W
thence North-Easterly and parallel to the said concession line
to the said concession line 6 chains 66 2-3 links, thence South-
chains to the limit of said lot, thence South-Easterly 6 chains 6
CONTAINING 10 ACRES, more or less.

The said lands are situate **WITHIN THE LIMITS**
adapted for Subdivision into **TOWN LOTS**, and valuable on that ac
situation for a market garden. There is a **BRICK DWELLING HOUSE**

The property will be sold in one lot. One-tenth of the purchase money to be paid
the balance within one month thereafter, without interest. The conditions of sale are

Further Particulars may be had by applying to **MESSRS. MEREDITH**
to **ROBERT COLIN SCATCERD**, Esquire, Solicitor, at Strathroy, or

MEREDITH & MEREDITH,
Vendor's Solicitors.

SIGNED,

Dated the 20th day of March, A.D. 1874.

(London Free Press Print)

AUCTION

**L & Maitland, Auctioneers,
S, IN THE TOWN OF STRATHROY,**

ON

DAY OF APRIL, 1874

the following lands and premises, namely :—

concession of the Township of Caradoc, described as follows :
links North-Westerly from the South-West angle of said lot,
concession line 15 chains, thence North-Westerly at right angles
thence South-Westerly parallel to the said concession line 15
ly 6 chains 66 2-3 links more or less to the place of beginning ;

THE LIMITS of the TOWN OF STRATHROY, and are
ble on that account. They are also well adapted, and in a desirable
SELLING HOUSE AND A BARN upon the lands.

the money to be paid down at the time of the sale, to the vendor, or her solicitors, and
ditions of sale are the standing conditions of the Court of Chancery.

SSRS. MEREDITH & MEREDITH, the Vendor's Solicitors, at London;
at Strathroy, or to the undersigned.

SIGNED,

J. SHANLY,

Free Press Printing Co.

MASTER AT LONDON.

