

**CIHM
Microfiche
Series
(Monographs)**

**ICMH
Collection de
microfiches
(monographies)**



Canadian Institute for Historical Microreproductions / Institut canadien de microreproductions historiques

© 1998

Th
co
ma
th
sig
ch



Thi
Ce

10

Technical and Bibliographic Notes / Notes techniques et bibliographiques

The Institute has attempted to obtain the best original copy available for filming. Features of this copy which may be bibliographically unique, which may alter any of the images in the reproduction, or which may significantly change the usual method of filming are checked below.

- Coloured covers / Couverture de couleur
- Covers damaged / Couverture endommagée
- Covers restored and/or laminated / Couverture restaurée et/ou pelliculée
- Cover title missing / Le titre de couverture manque
- Coloured maps / Cartes géographiques en couleur
- Coloured ink (i.e. other than blue or black) / Encre de couleur (i.e. autre que bleue ou noire)
- Coloured plates and/or illustrations / Planches et/ou illustrations en couleur
- Bound with other material / Relié avec d'autres documents
- Only edition available / Seule édition disponible
- Tight binding may cause shadows or distortion along interior margin / La reliure serrée peut causer de l'ombre ou de la distorsion le long de la marge intérieure.
- Blank leaves added during restorations may appear within the text. Whenever possible, these have been omitted from filming / Il se peut que certaines pages blanches ajoutées lors d'une restauration apparaissent dans le texte, mais, lorsque cela était possible, ces pages n'ont pas été filmées.
- Additional comments / Commentaires supplémentaires: Some pages obscured by newspaper clipping.

L'Institut a microfilmé le meilleur exemplaire qu'il lui a été possible de se procurer. Les détails de cet exemplaire qui sont peut-être uniques du point de vue bibliographique, qui peuvent modifier une image reproduite, ou qui peuvent exiger une modification dans la méthode normale de filmage sont indiqués ci-dessous.

- Coloured pages / Pages de couleur
- Pages damaged / Pages endommagées
- Pages restored and/or laminated / Pages restaurées et/ou pelliculées
- Pages discoloured, stained or foxed / Pages décolorées, tachetées ou piquées
- Pages detached / Pages détachées
- Showthrough / Transparence
- Quality of print varies / Qualité inégale de l'impression
- Includes supplementary material / Comprend du matériel supplémentaire
- Pages wholly or partially obscured by errata slips, tissues, etc., have been refilmed to ensure the best possible image / Les pages totalement ou partiellement obscurcies par un feuillet d'errata, une pelure, etc., ont été filmées à nouveau de façon à obtenir la meilleure image possible.
- Opposing pages with varying colouration or discolourations are filmed twice to ensure the best possible image / Les pages s'opposant ayant des colorations variables ou des décolorations sont filmées deux fois afin d'obtenir la meilleure image possible.

This item is filmed at the reduction ratio checked below /
Ce document est filmé au taux de réduction indiqué ci-dessous.

10x	14x	18x	22x	26x	30x
			✓		
12x	16x	20x	24x	28x	32x

The copy filmed here has been reproduced thanks to the generosity of:

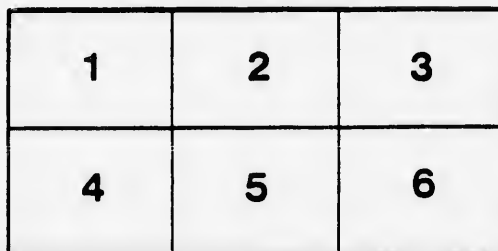
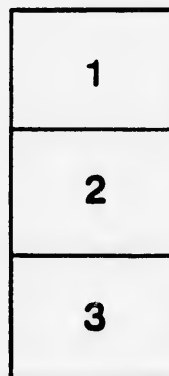
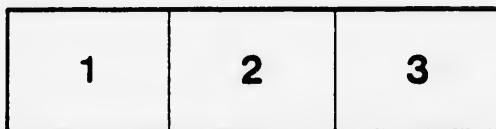
National Gallery of Canada,
Library

The images appearing here are the best quality possible considering the condition and legibility of the original copy and in keeping with the filming contract specifications.

Original copies in printed paper covers are filmed beginning with the front cover and ending on the last page with a printed or illustrated impression, or the back cover when appropriate. All other original copies are filmed beginning on the first page with a printed or illustrated impression, and ending on the last page with a printed or illustrated impression.

The last recorded frame on each microfiche shell contains the symbol \rightarrow (meaning "CONTINUED"), or the symbol ∇ (meaning "END"), whichever applies.

Maps, plates, charts, etc., may be filmed at different reduction ratios. Those too large to be entirely included in one exposure are filmed beginning in the upper left hand corner, left to right and top to bottom, as many frames as required. The following diagrams illustrate the method:



L'exemplaire filmé fut reproduit grâce à la générosité de:

Musée des Beaux-Arts du Canada,
Bibliothèque

Les images suivantes ont été reproduites avec le plus grand soin, compte tenu de la condition et de la netteté de l'exemplaire filmé, et en conformité avec les conditions du contrat de filmage.

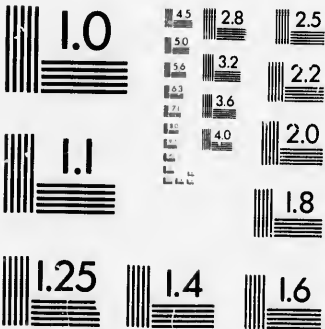
Les exemplaires originaux dont le couverture en papier est imprimée sont filmés en commençant par le premier plat et en terminant soit par la dernière page qui comporte une empreinte d'impression ou d'illustration, soit par le second plat, selon le cas. Tous les autres exemplaires originaux sont filmés en commençant par la première page qui comporte une empreinte d'impression ou d'illustration et en terminant par la dernière page qui comporte une telle empreinte.

Un des symboles suivants apparaîtra sur la dernière image de chaque microfiche, selon le cas: le symbole \rightarrow signifie "A SUIVRE", le symbole ∇ signifie "FIN".

Les cartes, planches, tableaux, etc., peuvent être filmés à des taux de réduction différents. Lorsque le document est trop grand pour être reproduit en un seul cliché, il est filmé à partir de l'angle supérieur gauche, de gauche à droite, et de haut en bas, en prenant le nombre d'images nécessaire. Les diagrammes suivants illustrent le méthode.

MICROCOPY RESOLUTION TEST CHART

(ANSI and ISO TEST CHART No. 2)



APPLIED IMAGE Inc

1653 East Main Street
Rochester, New York 14609 USA
(716) 482 - 0300 - Phone
(716) 288 - 5989 - Fax

19TH LOAN EXHIBITION,
WATER & COLOURS
AND PASTELS—IN
THE ART GALLERY
PHILLIPS SQUARE.



BEGINNING JANUARY
19th, 1897.



The Art Association,
Montreal.



At the College Wood
A. M. M. M.

19TH LOAN EXHIBITION,
WATER & COLOURS
AND & PASTELS—IN
THE ART GALLERY
PHILLIPS SQUARE.&



BEGINNING JANUARY

19th, 1897.



The Art Association,
Montreal.

The Gurney-Massey Co., Ltd.

375 & 387 ST. PAUL STREET



capacity.

SCALES Of every description, from Post Office to 100 ton track.

Handwritten text, possibly a signature or name, in cursive script.

Art Association of Montreal.

Council for the Year 1896.

President, - - - - HON. G. A. DRUMMOND.

Vice-President, - - - SIR W. C. VAN HORNE.

Treasurer, - - - - MR. W. G. MURRAY.

Councillors.

For One Year.

MR. R. B. ANGUS.

" E. S. CLOUSTON.

DR. W. GARDNER.

" F. J. SHEPHERD.

MR. A. T. TAYLOR.

" D. A. WATT.

ROBERT LINDSAY, *Secretary*.

For Two Years.

REV. J. EDGAR HILL.

MR. C. J. FLEET.

" E. B. GREENSHIELDS.

" WILLIAM McLENNAN.

" DAVID MORRICE.

" JAMES ROSS.

MISS PANGMAN, *Asst.-Secretary*.

Loan Exhibition, January, 1897.

Executive Committee.

MR. R. B. ANGUS.

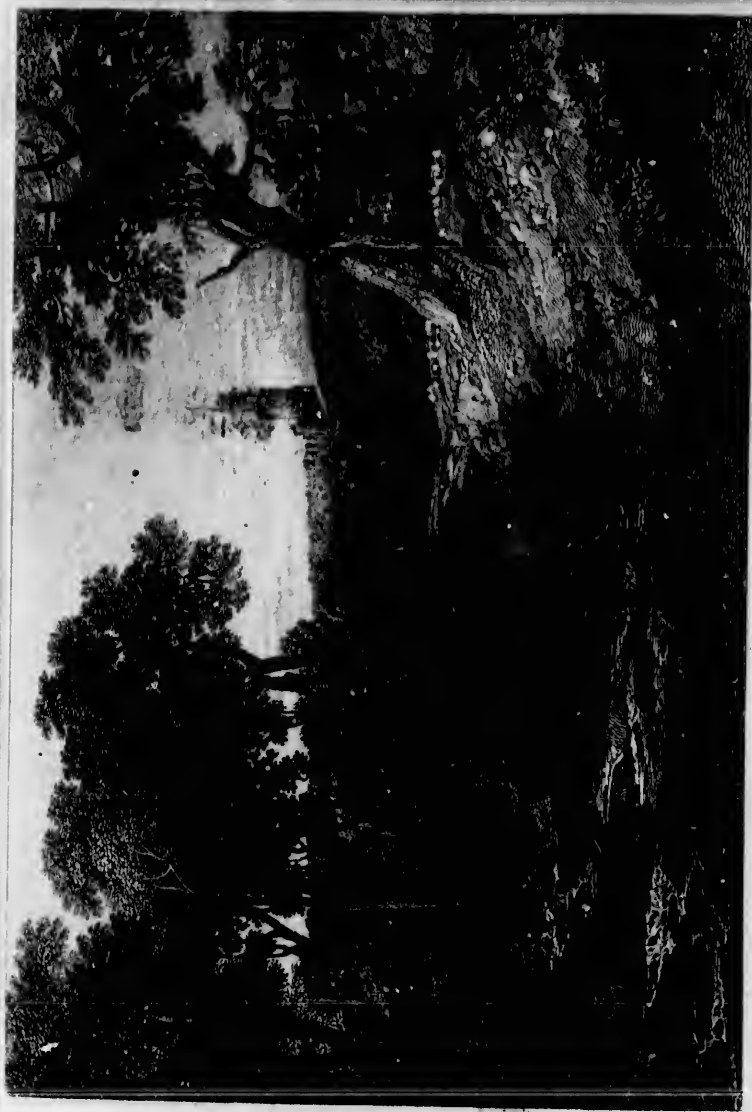
" C. J. FLEET.

" E. B. GREENSHIELDS.

DR. WM. GARDNER.

" F. J. SHEPHERD.

MR. A. T. TAYLOR.



C
S
L

Swamp

CATALOGUE.

APOL. (Louis)..... Holland
BRONZE MEDAL, Exposition Universelle, 1889.

1—Early Winter

Lent by George Sumner, Esq.

2—Winter Scene in a Dutch Forest

Lent by W. Gardner, Esq., M.D.

3—Home through the Woods

Lent by W. G. Murray, Esq.

4—Calm at Sea

Lent by R. B. Angus, Esq.

5—The Velp at Arnheim

Lent by W. J. Learmont, Esq.

ARTZ, (David Adolphe Constant)..... Dutch
Died 1890.

6—On the Dunes

Lent by Samuel Coulson, Esq.

7—By the Sea Shore

Lent by J. Reid Wilson, Esq.

BAKER, (William Bliss)..... American
1859-1886.

8—A Leafless Forest

Lent by W. G. Murray, Esq.

-
- BARNESLEY, (James Macdonald)**..... Montreal
 9—Landscape
 Lent by the Hon. G. A. Drummond.
- BARRET, (George)**. British
 10—Landscape
 Lent by R. B. Angus, Esq.
- BASTERT, (Nicholas)**..... Amsterdam
 MEDAL, Exposition Universelle, Paris, 1889.
 11—Canal and Village.
 Lent by George Sumner, Esq.
- BAYLISS, (Wyke) P.R.B.A.**..... London
 12—Abbaye aux Hommes, Caen
 Lent by R. F. Ruttan, Esq., M.D.
- BESNARD, (Paul Albert)**..... Paris
 13—Etude de Femme (Pastel)
 Lent by the Hon. G. A. Drummond.
- BLOMMERS, (Bernardus Johannes)**..... Holland
 MEDAL, Exposition Universelle, 1889.
 14—Children
 Lent by T. B. Brown, Esq.
- 15—Cottage Interior
 Lent by W. Gardner, Esq., M.D.
- 16—The First Born
 Lent by W. J. Learmont, Esq.

BOSBOOM, (Johannes).....Dutch
1817-1892.

MEDALS:—Paris, 1855 and 1889; Philadelphia, 1876. Knight of the Order of the Lion, of the Crown of Oak, and of Leopold.

17—A Church Interior

Lent by Edward Holton, Esq.

18—Landscape

Lent by George Sumner, Esq.

19—Kitchen Interior

20—The Cloisters of List

Lent by F. J. Shepherd, Esq., M.D.

21—Interior of St. Jacque, Antwerp

Lent by W. Gardner, Esq., M.D.

22—A Church Interior

Lent by Messrs. Scott and Sons.

23—Farm House where Bosboom often stayed

Lent by J. B. Cantin, Esq.

24—Landscape

Lent by R. B. Angus, Esq.

25—Interior of Church at Delft

26—Church at Haarlem

Lent by W. J. Learmont, Esq.

27—Church Interior

Lent by A. A. Browne, Esq., M.D.

BROWN, (John Lewis).....French
1829-1890.

MEDALS:—Paris, 1865, 1866, 1867. Legion of Honour, 1870.

28—A Scout

Lent by Edward Holton, Esq.

-
- BROWN, (T. Austen) A.R.S.A., R I** Edinburgh.
 29—At the Ferry
 Lent by the Hon. G. A. Drummond.
- BRYMNER, (William) R.C.A.** Montreal
 30—A Cartload of Sea Weed
 Lent by J. Reid Wilson, Esq.
- 31—Francie
 Lent by James Ross, Esq.
- COENRACHT, (Ferd.)** Amsterdam
 32—Antwerp
 Lent by Sir Wm. C. Van Horne, K.C.M.G.
- CONSTABLE, (John) R A.** British
 1776-1837.
 33—Clumber, seat of the Duke of Newcastle
 Lent by A. B. Macfarlane, Esq.
- COX, (David) R.W.S** British
 1783-1859.
 34—Warwick Castle
 Lent by C. R. Hosmer, Esq.
- 35—A Scene in Wales
 Lent by W. J. Learmont, Esq.
- DAUMIER, (Honoré)** Paris
 36—The Critics
 Lent by W. R. Miller, Esq.
- DE BOCK, (Théophile)** Holland
 37—Landscape, Holland
 Lent by A. B. Macfarlane, Esq.

Edinburgh.

DECAMPS, (Alexandre Gabriel)..... French
1803-1860.

MEDALS Paris, 1831 and 1834. Legion of Honour, 1839 ; Officer
in 1851.

Montreal

38—The Old Game Keeper
Lent by W. J. Learmont, Esq.

DE WINT, (Peter) R.W.S..... British
1784-1849.

39—A Launch at Chatham
Lent by Sir Wm. C. Van Horne, K.C.M.G.

Amsterdam

DU CHATTEL, (Frederick Jacobus)..... The Hague

40—On the River Vecht
Lent by T. B. Brown, Esq.

British

41—Evening
Lent by W. W. Watson, Esq.

42—Landscape
Lent by James Gardner, Esq.

British

43—Landscape
Lent by W. S. Paterson, Esq.

EDSON, (Allan) R.C.A Canadian
Died 1888.

44—In an English Village

45—The Quiet Pool
Lent by Hugh McLennan, Esq.

Paris

46—A Scene in the Eastern Townships
Lent by J. Reid Wilson, Esq.

Holland

47—Autumn
Lent by C. E. L. Porteous, Esq.

FIELDING, (Anthony Vandyke Copley) P.R.W.S. British
1787-1855.
Gold Medal, Paris, 1824.

48--Llangollen, Wales

Lent by E. B. Greenshields, Esq.

49--Landscape

Lent by R. B. Angus, Esq.

FORTUNY Y. CARBO, (Mariano) Spanish
1841-1874.

50--Interior of a Carpet Warehouse, Morocco

Lent by James Ross, Esq.

51--Arab Sheik

Lent by W. J. Learmont, Esq.

FRASER, (John A.) R.C.A. New York

52--A Pool in the Woods

Lent by Sir Wm. C. Van Horne, K.C.M.G.

HARPIGNIES, (Henri) H.C. Paris
MEDALS:—Salon, 1866, 1868, 1869, 1878 and (Gold) 1889. Legion
of Honour, 1875; Officer, 1883.

53--Aqueduct at Callet, near Paris

Lent by Messrs. W. Scott & Sons.

HARRIS, (Robert) P.R.C.A. Montreal

54--The Maple Wreath

Lent by T. B. Brown, Esq.

HÖPPE, (Bernhardt) Antwerp

55--Barges on Canal, Holland

Lent by E. S. Clouston, Esq.

56--Dutch Windmill

Lent by A. B. Macfarlane, Esq.

HUNT (Alfred William) R. W. S...... British
1831-1896.

57—Snowdon

58—Welch Mountain Scene

59—On the Rhine

Lent by F. J. Shepherd, Esq., M.D.

ISRAELS, (Josef).....The Hague

MEDALS:—Paris, 1867 1878. Legion of Honour, 1867; Officer, 1878.

60—The Little Nurse

Lent by T. B. Brown, Esq.

61—The Gentle Art

Lent by W. S. Robertson, Esq.

62—The Two Friends

Lent by C. R. Hosmer, Esq.

63—Grace before Meals

64—Children Wading

Lent by W. J. Learmont, Esq.

JACQUE, (Charles Emile)..... French
1813-1894.

MEDALS:—1851, 1861, 1863, 1864 1867. Legion of Honour, 1867.

65—Study of Horses

Lent by the Estate A. Wilson.

KEVER, (Jacob Simon Hendrick)..... Amsterdam

BRONZE MEDAL, Exposition Universelle, 1889.

66—Mother and Child

Lent by E. W. Parker, Esq.

67—Idle Moments

Lent by Dan Gillmor, Esq.

68—Alone in the House

Lent by Fayette Brown, Esq.

-
- LESSORE, (Jules) R.I** England
 69—Rouen Cathedral
 Lent by T. B. Brown, Esq.
- LHERMITTE, (Léon Augustin)**..... Paris
 MEDALS :—1874 and 1880. Legion of Honour 1884.
 70—L'enfant malade (Crayon)
 Lent by W. Gardner, Esq. M.D.
- 71—Autumn, (Pastel)
 Lent by the Hon. G. A. Drummond.
- LITTLE, (Joseph)** Edinburgh
 72—The arrival of the Fishing Smacks
 73—St. Giles Cathedral, Edinburgh
 Lent by A. T. Taylor, Esq.
- LLOYD, (Stuart) R.B.A**..... London
 74—Harvest Moon
 Lent by H. J. Tiffin, Esq.
- MARIS, (Jacobus)**..... The Hague
 Hon. Mention, Salon, Paris, 1884. Exposition Universelle, 1889.
 75—Dordrecht Cathedral
 Lent by C. R. Hosmer, Esq.
- 76—A Corner in Amsterdam
 Lent by W. J. Learmont, Esq.
- 77—Dordrecht Cathedral
 Lent by E. B. Greenshields, Esq.
- MARIS, (Matthys)**..... The Hague
 78—A bit of old Amsterdam
 Lent by W. J. Learmont, Esq.

MARIS, (Willem) The Hague

79—Morning

Lent by F. J. Shepherd, Esq., M. D.

80—Landscape and Cattle

Lent by Messrs. W. Scott & Sons.

MAUVE. (Anton) Dutch
1838-1890.

Medals at Amsterdam, Antwerp, Paris, Philadelphia and Vienna.

81—Changing Pasture

Lent by David Morrice, Esq.

82—Cattle

Lent by C. R. Hosmer, Esq.

83—At the Cottage Door

Lent by E. B. Greenshields, Esq.

84—Village of Laaren, Holland

Lent by A. B. Macfarlane, Esq.

85—Wood Cutters

Lent by W. Gardner, Esq., M.D.

86—Girl with Cows

Lent by Sir Wm. C. Van Horne, K.C.M.G.

MELVILLE, (Arthur) A.R.S.A. London

87—The Sultan's Audience

Lent by R. B. Angus, Esq.

MESDAG, (Hendrik William) H.C. The Hague

MEDALS:—1870, 1878. Gold Medal, Exposition Universelle 1889.
Legion of Honour, 1889.

88—On Scheveningen Beach

Lent by Edward Holton, Esq.

89—Evening

Lent by F. J. Shepherd, Esq., M.D.

-
- METTLING, (Louis)**..... Paris
 90—Greville (Pastel)
 Lent by Sir Wm. C. Van Horne, K.C.M.G.
- MILLET, (Jean François)**..... French
 1814-1875.
 MEDALS :—1853, 1864, 1867. Chevalier of the Legion of Honour,
 1868. Diploma to the memory of deceased Artists, 1878.
 91—La leçon d'Equitation (Pastel)
 Lent by James Ross, Esq.
 92—Mlle Emilie Millet, (Crayon)
 Lent by W. J. Learmont, Esq.
- MILNE, (Joseph)**..... Edinburgh
 93—Landscape
 Lent by T. B. Brown, Esq.
- NAKKEN, (Willem Carel)**..... Holland
 MEDAL, Philadelphia, 1876.
 94—Donkeys for hire
 Lent by Arthur Hodgson, Esq.
 95—A Stable Yard
 Lent by C. R. Hosmer, Esq.
- NEUHUYS, (Albert) H.C.**..... The Hague
 MEDALS :—Amsterdam, 1872; Paris, 1889.
 96—Grandfather's Darling
 Lent by I. G. Ogden, Esq.
 97—Dolls Dressmaker
 Lent by George Sumner, Esq.
 98—Interior
 Lent by R. B. Angus, Esq.
- O'BRIEN, (Lucius Richard) R.C.A.**..... Toronto
 99—Flowers
 Lent by Sir Wm. C. Van Horne, K.C.M.G.

... Paris

OFFERMANS, (T.)..... Antwerp

100—The Clock Maker

Lent by J. B. Cantin, Esq.

. French

101—The Old Carpenter

Lent by A. B. Macfarlane, Esq.

Honour,
S.

OKUMURA, (Taro)..... Japan

102—An Interesting Book

Lent by Sir Wm. C. Van Horne, K.C.M.G.

linburgh

ONNES, (M. Kamerlingh).....

103—Pansies and Peonies

104—Fruit

Holland

105—Peonies

Lent by Sir Wm. C. Van Horne, K.C.M.G.

OSTERZEE, (Jan).....

106—Landscape and Sheep

Lent by W. S. Robertson, Esq.

ne Hague

PATON, (Sir Joseph Noel) R.S.A...... Edinburgh

107—Assassination of James 1st of Scotland

Lent by the Estate A. Wilson.

Toronto

PATON, (Waller H.) R.S.A...... Scotch
Died 1895.

108—Duddiston Lock

Lent by the Estate A. Wilson.

PENNE, (Charles Olivier de) H.C. Paris
 MEDALS :—Paris, 1875 and 1883.

109—Hounds

110—In the Kennel

Lent by W. R. Miller, Esq.

POGGENBEEK, (George)..... Amsterdam
 GOLD MEDAL :—Amsterdam, 1883.

111—Meadow and Cows

Lent by A. T. Taylor, Esq.

PROUT, (Samuel) R.W.S...... British
 1783-1852.

112—Church Interior

Lent by R. B. Angus, Esq.

PYNE, (Thomas) R.I...... London

113—A Surrey Landscape

Lent by W. G. Murray, Esq.

RENOIR, ()..... Paris

114—Sisters, (Pastel)

Lent by Sir Win. C. Van Horne, K.C.M.G.

ROELOFS, (Willem)..... The Hague
 SILVER MEDAL, Exposition Universelle, 1889. Orders of Leopold
 and Francis Joseph, 1858. Officer, Order of Crown of Oak, 1860.

115—Landscape

Lent by Arthur Hodgson, Esq.

116—Landscape

Lent by James Gardner, Esq.

117—Landscape

Lent by W. S. Paterson, Esq.

118—Landscape with Cattle

Lent by E. S. Clouston, Esq.

Paris

ROOSENBOOM, (Margu rite).....The Hague

119- -Hollyhocks

Lent by W. Gardner, Esq., M.D.

120—Chrysanth mes

121—Tournesols

Lent by the Hon. G. A. Drummond.

erдам

122—Flowers

Lent by F. Wolferstan Thomas, Esq.

British

ROUSSOFF, (Alexandre N.).....Venice

123—Venice

Lent by Sir Wm. C. Van Horne, K.C.M.G.

ondon

SAUNIER, (Octave)... ..Paris

124—Cottage

125—Stable Yard

Lent by Sir Wm. C. Van Horne, K.C.M.G.

Paris

SCHMIDT, (T. G.).....

126—Winter Landscape

Lent by W. T. Leach, Esq.

Hague

opold

1860.

SEYMOUR, (M.).....

127—A Spring Morning

Lent by Hugh McLennan, Esq.

SCHIPPERUS, (P. A.).....Rotterdam

128—Landscape

Lent by T. B. Brown, Esq.

SHIRLAW, (Walter) N.A......New York

129—A Gipsy

Lent by J. B. Cantin, Esq.

- SOUST, (Louis Van)**.....
- 130—Autumn
Lent by W. W. Watson, Esq.
- 131—Autumn
Lent by C. A. Cantin, Esq.
- 132—Landscape
Lent by Thomas E. Hodgson, Esq.
- 133—Homeward Bound
Lent by A. B. Macfarlane, Esq.
- STACQUET, (O.)**.....Paris
- 134—The Path of the River
Lent by W. Gardner, Esq., M.D.
- 135—Winter Landscape
Lent by Sir Wm. C. Van Home, K.C.M.G.
- STORTENBEKER, (Pieter)**.....
- 136—Cattle on the River Bank
Lent by E. W. Parker, Esq.
- 137—Dutch Scene
Lent by J. Reid Wilson, Esq.
- SWAN, (John Macallan)**.....London
- 138—At Evening they seek their Prey, (Pastel)
Lent by R. B. Angus, Esq.
- 139—The Wounded Lioness, (Pastel)
Lent by W. J. Learmont, Esq.
- TEN KATE, (Herman Frederick Carel)**.....The Hague
- 140—Boy Feeding a Crow
Lent by J. B. Cantin, Esq.

TER MEULEN, (F. Peter) The Hague

141—Sheep

Lent by T. B. Brown, Esq.

142—Sheep on the Dunes

Lent by W. Gardner, Esq., M.D.

143—Sheepfold

Lent by Sir Wm. C. Van Horne, K.C.M.G.

THOLEN, (Willem Bastian) Antwerp

MEDALS:—Bronze, Exposition Universelle, Paris, 1889; Gold, 1st Class, Exposition Internationale des Beaux Arts, Munich, 1892.

144—Early Morning

Lent by A. A. Browne, Esq., M.D.

145—Old Leyden Church

Lent by George Sumner, Esq.

146—Entrance of Park, The Hague

147—Scheveningen in Winter

Lent by F. J. Shepherd, Esq., M.D.

148—On the Shore, Evening

Lent by C. R. Hosmer, Esq.

149—Boat loading with Sand

Lent by W. Gardner, Esq., M.D.

150—A Dutch Market Scene

Lent by J. Reid Wilson, Esq.

151—Interior of a Theatre

Lent by R. B. Angus, Esq.

152—The Woods at Laren

Lent by W. J. Learmont, Esq.

-
- THORNYCROFT, (Helen)**.....London
 153—St. Sebastian
 Lent by Mrs. Richard L. MacDonnell.
- TURNER, (J. M. W.) R.A.**.....British
 1775-1851.
 154—Florence
 Lent by C. R. Hosmer, Esq.
 155—Fonthill Abbey
 Lent by E. B. Groenshields, Esq.
 156—Ehrenbreitstein
 Lent by R. B. Angus, Esq.
 157—Autumnal Morning, Wensleydale, Yorkshire
 Lent by W. J. Learmont, Esq.
- VAN ESSEN, (Jan)**.....Dutch
 158—Landscape
 Lent by W. T. Leach, Esq.
- VERVEER, (Mauritz)**.....Dutch
 159—Fishing Boats
 Lent by George Sumner, Esq.
- VROLYK, (Jan)**.....The Hague
 160—Cattle Grazing
 Lent by Arthur Hodgson, Esq.
 161—Early Morning
 Lent by C. A. Cantin, Esq.
 162—Landscape
 Lent by James Gardner, Esq.
- WALTON, (Edward A.)**.....Glasgow
 163—Roseneath Church
 164—Roseneath Woods
 Lent by Prof. H. T. Bovey.

WEILAND, (J.).....

165—Grandmother and Child
Lent by Messrs. W. Scott & Sons.

WEISSENBRUCH, (J. H.).....The Hague

166—Evening, Zaandam
Lent by Edward Holton, Esq.

167—Night Scene
Lent by T. B. Brown, Esq.

168—The Old Mill
Lent by G. R. Robertson, Esq.

169—Sea Coast
Lent by C. R. Hosmer, Esq.

170—The Marsh
Lent by A. T. Taylor, Esq.

171—Scene in Holland
Lent by W. W. Watson, Esq.

172—Coast Scene
Lent by W. Gardner, Esq., M.D.

173—Landscape, Evening
Lent by J. B. Cantin, Esq.

174—Old Boat House
Lent by R. Meighen, Esq.

175—Scene in Holland, atmospheric effect after rain
Lent by J. B. Learmont, Esq.

176—Landscape, Holland
Lent by Sir Wm. C. Van Horne, K.C.M.G.

177—Interior

178—Church and Canal
Lent by A. A. Browne, Esq., M.D.

WETHERBEE, (George F.) E.I......London

179—The Three Witches
Lent by James Ross, Esq.

WILLIAMS, (Pownoll T.).....Hastings

180—Autumn Scene
Lent by E. W. Parker, Esq.

WINDT, (Th.).....

181—Portrait of the Artist
Lent by Messrs. W. Scott & Sons.

182—Dutch Coast Scene
Lent by Francis McLennan, Esq.

ZWART, (W. de).....The Hague

183—The Canal Bridge
184—Near Scheveningen
Lent by A. T. Taylor, Esq.





THE LOAN EXHIBITION—“LECON A EQUITATION.”



THE LOAN EXHIBITION.—"AT EVENING THEY SEEK THEIR PREY," BY JOHN M. SWAN.

THE LOAN EXHIBITION—"AT EVENING THEY SEEK THEIR PREY," BY JOHN M. SWAN.



THE LOAN EXHIBITION—ARAB SHEIK, BY FORTUNY.



LOAN EXHIBITION—ON THE RHINE, BY ALFRED WILLIAM HUNT.



THE LOAN EXHIBITION—PORTRAIT OF THE ARTIST, BY TH. WINDT.

D. DENNE.

G. R. ROBERTSON & SONS.

C. W. HAGAR,

Capt. JOHN LAWRENCE.

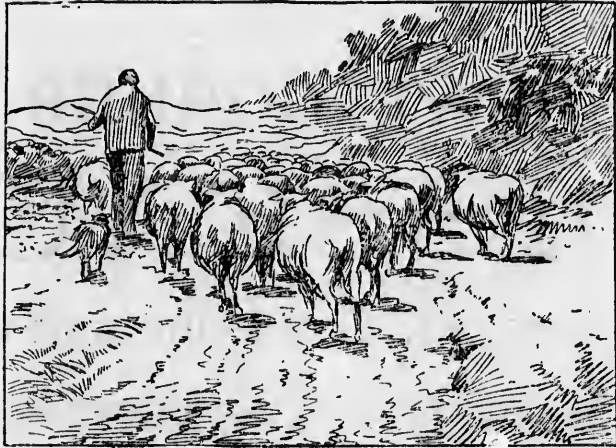
WILLIAM HUNT.



THE LOAN EXHIBITION—No. 31, FRANCIE, BY WILLIAM BRYMNER.



As A LOAD OF SEAWEED—W. BRYMNER, any.
R.C.A.



SHEEP ON THE DUNES—F. PETER TER MEULEN.

A. BROWNING, British Empire Building.
E. A. WHITEHEAD, Temple Building.
WM. CAIRNS, 18 St. Alexis Street.



BRYMNER.

Art Association of Montreal.

THE ASSOCIATION'S

Annual Spring Exhibition

OF

CANADIAN ART,

WILL BE HELD IN THE

ART GALLERY, PHILLIPS SQUARE,

IN MONTH OF APRIL NEXT.

Contributions of Paintings, Drawings, and Sculptures, Etchings, Architectural Drawings, and Designs in Stained Glass, by Canadian and other Artists, resident and non-resident, are hereby invited. Contributions can be received at the Gallery up to April 1st.

Intending exhibitors are requested to communicate with the undersigned, who will supply blank forms and all necessary information.

ROBERT LINDSAY, *Secretary.*

MONTREAL, January, 1897.



3 3 P

G. 3 3

M. VERVEER—FISHING BOATS.



L

O.

Comm

House,

J. H. WEISSENBRUCH—THE OLD MILL.

17 ... STREET,

Telephone

ONTREAL.

AL

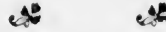
Letter



ome Cards,
&c., &c.
ss and despatch.

THE CLOCK MAKER—T. OFFERMANS.

What
Do You
Do



With your Physician's Prescriptions?
Do you take them just anywhere, or
are you as particular as you should
be? When you want the best work
and exactly what the doctor orders,
send your prescriptions to



Macmillan's,

PHILLIPS SQUARE,

Telephone 4737.

Montreal.

Scott's Picture Galleries,

1739 NOTRE DAME STREET,

Open to the Public



Magnificent selection of Water

Colours just received.



Established 1859.

GEO. S. KIMBER,

House, Sign and Decorative Painter.

ALL KINDS OF PAPER-HANGINGS IN STOCK.

2466 ST. CATHERINE STREET.

MONTREAL.

Bell Telephone No. 3287.

W. F. TORRANCE,

1761 NOTRE DAME STREET.

IMPORTER AND DEALER IN

ANTHRACITE and BITUMINOUS COAL.

WYOMING and LEHIGH for Furnace and Range.

OHIO CANNEL for Grates.

PLYMOUTH RED ASH in all sizes.

Telephone 785.

A GALAXY OF TALENT.

Many Fine Pictures at the Loan Exhibition.

Well Known Artists, Both Canadian and Foreign, Are Represented on the Walls.

The Art Gallery was thronged last night with a galaxy of talent, a phalanx of beauty, the occasion being the opening of the 19th Loan Exhibition of the Association. Many of Montreal's best art critics were there to view the 184 pictures in water colors and pastels, lent by the art patrons of Montreal. In the whole collection there are only five Canadians represented, Fraser, Edson, O'Brien, Barnsley and Brymner. Numerous as the pictures are, few of them are inferior, and there are some that are truly brilliant. The commonplace ones are at least respectable, which augurs well for the future taste of Canadian collections of art, be they foreign or native.

The majority of the pictures are good in color, technique, drawing and composition, and those who have been fortunate enough to travel abroad will recognize old friends that will bring up many pleasant memories and recollections of their flying trips to the art centres of the world.

These pictures have no suggestion of having been painted in blocks to suit the vitiated tastes of certain dealers, but are conscientious studies that are truthful, because they are direct from nature, and each has an individuality that is entirely its own, decidedly refreshing and straight from the master's hand. There is difficulty in summing up such a conglomerate collection, there being so many different countries represented that criticism would have to be made through many foreign spectacles, and one is almost sure of hurting the feelings of the owner, especially if he paid for the name in the corner, independent of the merits of the work. The exhibition, as a whole, is one that every Montrealer should be proud of, and those who were there last night evidently enjoyed the artistic treat they came to share. The tone of the whole exhibition is so good and the standard so high that it should not be missed by lovers of art, and a visit to the Gallery will more than repay the most critical and blasé connoisseurs. It is seldom in local loan collections that we see the work of Constable, Fortuny, Israels, Jaeque, Mauve, Mesdag, Millet, Tholen, Turner and Roussouff hanging upon the same wall.

THE LOAN EXHIBITION.

Beautiful Pictures to be Seen at Art Gallery.

THE EXCELLENT WORK OF CANADIAN ARTISTS

Montreal Citizens Who Have Contributed to the Fine Collection.

The members of the Art Association and their friends who have received invitations to the private view this evening of the loan exhibition of water colors and pastels, have a great treat in store. The collection of art treasures gathered together is undoubtedly the finest ever seen in Canada, and will well repay careful and repeated inspection. In all 184 paintings have been loaned and admirably placed in position in the large gallery under the personal supervision of Mr. Robert Lindsay, the popular and painstaking secretary.

The chef d'oeuvre is undoubtedly Millet's pastel, "La Leçon d'Equitation," which has the place of honor. Its coloring is as remarkable as its execution is beautiful. This masterpiece is loaned by Mr. James Ross.

Turner—the great Turner—is represented by four paintings, two of his earlier and two of his later periods. They are "Florence," lent by Mr. C. R. Hosmer; "Fonthill Abbey," lent by Mr. E. B. Greenshields; "Ehrenbreitstein," lent by Mr. R. B. Angus; and

EXHIBITION.

...res to be
Gallery.

...WORK OF
ARTISTS

...Who Have Con-
me Collection.

Art Association have received in view this evening of water colors that treat in store. Treasures gathered by the finest ever will well repay care- tion. In all loaned and ad- tion in the large sonal supervision the popular and

undoubtedly Mil- on d'Equitation," honor. Its color- as its execution terpiece is loaned

Turner—is repre- ngs, two of his is later periods. lent by Mr. C. Abbey," lent by s; "Ehrenbreit- B. Angus; and

"An Autumnal Morning, Wensleydale, Yorkshire," lent by Mr. W. J. Learmont. Two of the most striking canvases on the walls are Fortuny's "Interior of a Carpet Warehouse, Morocco," and Arthur Melville's "Awaiting an Audience with the Sultan." They both possess an astonishing wealth of color with an attention to the veriest detail, which stamp them as works of genius. They are owned respectively by Mr. James Ross and Mr. R. B. Angus.

The Dutch school seems to predominate in the collection, but it by no means dominates. Landscape is strongly represented, while here and there are representations of still life which strongly attract. One of the most remarkable of the small paintings is a dainty bit of work by Taro Okumura, entitled "An Interesting Book," the property of Sir William Van Horne. Two Japanese maidens are shown reclining, deeply intent upon the volume they are perusing. In strong contrast to this glimpse of the art of the Flowery Kingdom are landscapes of olden time in England, from the brushes of John Constable, "Clumber," and of David Cox, "Warwick Castle," and "A Scene in Wales." The "Assassination of James I. of Scotland," by Sir Joseph Noel Paton, is a relic of antiquity which is well worth careful inspection, its conception and execution is so different from the art of this generation.

Canada is, on the whole, well represented by works of William Brymner Allan Edson, John A. Fraser, Robert Harris and L. R. O'Brien. Mr. Brymner's "Cartload of Seaweed" is among the gems of the collection; he is also represented by "Francis," a delightful life study. Four of the late Allan Edson's charming landscapes testify as to the loss suffered by Canadian art in his untimely death. Mr. Fraser's "Pool in the Woods"—another of Sir William Van Horne's collection—is startling in its fidelity to nature, while Mr. Harris' "Maple Wreath" is as unique for originality of design as inspiring for its patriotism. A typical Canadian beauty clad in some gauzy evening costume, wearing a wreath of autumnal maple leaves, colored as only nature can color. Mr. O'Brien's sole picture is a study in flowers, beautiful almost as the originals.

The Art Association and the art lovers of Montreal should be most grateful for this opportunity of seeing the beautiful art treasures which so many of Montreal's homes contain.

WHOLESALE AGENT

WATER COLOR EXHIBITION.

A NOTABLE REPRESENTATION OF GREAT MASTERS.

The Art Association of Montreal is entitled to view with complacent pride the "Loan Exhibition of Water Colors" now upon the walls of the new Art Gallery. The bringing together of such a notable collection of pictures in this pleasing medium reflects the greatest credit upon all concerned. It speaks volumes, too, for the diffusion of artistic appreciation among our wealthy citizens that pictures of such real merit and in such numbers should have found a home in our city.



FEEDING THE PET CROW.

Alike to the connoisseur, the student and the amateur, the exhibition cannot fail to afford both pleasure and profit, and increased respect, perhaps, for an art that not so long ago was the plaything of the dilettante and the butt of the 'art critic.' Looking around upon the many subjects in this pleasant room, one meets at every turn works of transcendent merit and a wealth of celebrated names that one did not expect to find out of Europe.

To the student especially it will be of absorbing interest to observe how vary-



JOSEF ISRAELS.

ing results have been obtained by different masters, and methods here are many and manifold; and the simple picture-lover will find this collection a thing of beauty and a joy until the day it shall have been dispersed. Amongst the many paintings by artists of world-wide celebrity are three Turners, two in his earlier manner, 'Fonthill Abbey' and 'Wesleydale, Yorkshire,' the former especially a fine study in composition; and one, 'Florence,' in his later manner—what has been called his 'cadmium period'; all three have the charm of this greatest of



FLORENCE—J. M. W. TURNER.

landscapists and will repay careful study. Two examples of David Cox also are worthy of especial attention, as they show his well-known mastery over styles as far asunder as the poles in an especial degree, the one being treated in his broad, strong manner, the other showing a delicate elaboration of detail. There are two good examples of Copley Fielding and a Constable that, while charming, is not characteristic of this artist's work.



J. CONSTABLE, 1837.

Two Eastern scenes will be sure to attract the spectator and gain his admiration. Fortuny's 'Carpet Warehouse, Tangiers,' has been seen here before, but it is a perfect study of its kind, and 'custom cannot stale' its wealth of color and other merits; Arthur Melville's 'Waiting an Audience with the Pasha' will be new to most of the visitors, and its many charms will surely gain their hearty appreciation.

Perhaps J. F. Millet's pastel, 'La Leçon d'équitation,' which occupies the place of honor, will win the greatest share of favor. It is indeed a beautiful and masterly study, and criticism upon it here would be almost an impertinence. In Dutch subjects the exhibition is especially noteworthy; there are many examples of Tholen and Weissenbruch, and the versatility of the former will be sure to attract attention. The modern French, English and Canadian painters are also well represented; so that no one who takes an interest in art in general, or the art of aquarelle in particular, can afford to miss this magnificent aggregation of serious and beautiful work.

ART IN WATER COLORS.

Private View of a Magnificent Loan Exhibition Held Last Evening.

There was a large and fashionable gathering in the galleries of the Art Association last evening on the occasion of the private view to members of the loan exhibition of water colors. Although this is not by any means the first loan exhibition held by the Art Association of Montreal, yet this is the first that has been devoted exclusively to water colors. The loan exhibitions have each year commanded more and more attention until now they are looked forward to with great anticipation by all art lovers as a rare artistic treat. As has been already remarked one of the advantages which the present generation has over preceding generations in Canada, is that of being able to see without leaving home, some of the works of the great masters of painting. And be it to the credit of those men in Montreal who own many fine examples of the old masters, that they so generously lend them that the public may not only have a glimpse of their beauties, but may study and examine at leisure if they so desire.

The well lined walls of the new gallery show that there are enough really fine pastels and water colors in Montreal to make a first-class exhibition. The members' private view last evening would hardly be the time chosen to get a good view of the pictures. While the evening was a charming one in every respect, many were able to get but a glimpse of the pictures; it was quite impossible to study any one of them. Apart from the crowd in the galleries, the music and the conversation, it was difficult at times to see the pictures in a good light, for the lights overhead were often reflected in the glass covering the pictures. All will, however, have opportunity of visiting the exhibition in the mornings and afternoons when the excellent lighting brings out the desired effect to perfection.

It was s
evening when
and it was n
last had c
stationed at
excellent pro
to the pleasu
freshments w
class room ad
evening work
been one of
views" on re

Among the
William Gar
lor, Mr. W.
shields, Mr.
W. G. Mur
Misses Angu
Mrs. C. R. H
Wm. Brym
land, Mr. J
James Bell, I
rice, Mr.
Fleet, Mr.
Lennan, Mr.
Mr. S. Couls
Mrs. Stange
E. Holton, M
Macfarlane,
Miss Mackay
Mrs. Fayette
Fisher, the M
John Turnl
Finley, Dr.
Misses Mac
Thomas, Mr.
Foley, Mr.
Holt, Miss
Miss Symme
Durnford, M
Albert Lewis
Mrs. Thomas
Dr. and Miss
den, Mr. a
Misses Simp
Ruttan, Dr.
Eachran, Miss
others.

To go int
this collection
water colors
of Montreal
Indeed, critic
it would see
tempt it w
one of Turn
David Cox, F
Let it be rat
the more pro
lection. The
largest share
'La Leçon d'
lent by Mr.
thing absorbi
more and m
There is also
Emilie Mille
There are no
exhibition.
and an Autu

tel, 'La Le- occupies the he greatest e beautiful ism upon it nperntence. bition is es- are many eissenbruch, rmer will be The modern an painters so that no e art in gen- e in particu- magnificent utiful work.

COLORS: fficient Loan Evening.

nable gather- Association of the private exhibition of not by any held by the et this is the exclusively to exhibitions have and more at- looked forward all art lovers . As has one of the nt generation in Canada, hout leaving the great mas- credit of those many fine ex- they so gen- blic may not beauties, but ere if they so

new gallery ly fine pastels e make a first- bers' private e be the time e the pictures. rming one in able to get it was quite hem. Apart s, the music difficult; at ood light, for e reflected; in ss. All will, eisting the ex- ternoons when t the desired

It was shortly after eight o'clock last evening when the guests began to arrive, and it was not until after eleven when the last had departed. An orchestra was stationed at the head of the stairs, and an excellent programme of music added much to the pleasure of the evening. Light refreshments were also served in the large class room adjoining the new gallery. The evening was generally considered to have been one of the most pleasant "private views" on record.

Among those who were present were Dr William Gardner, Mr. and Mrs. A. T. Taylor, Mr. W. J. Learmont, Mr. E. B. Green-shields, Mr. and Mrs. G. W. Stephens, Mr. W. G. Murray, Mr. Forbes Angus, the Misses Angus, Mr. T. Brown, Mr. and Mrs. C. R. Hosmer, Dr. F. J. Shepherd, Mr. Wm. Brymner, Mr. and Mrs. G. B. Burland, Mr. Jeffrey Burland, Dr. and Mrs. James Bell, Miss Arnton, Mr. David Morrice, Mr. D. A. Watt, Mr. C. J. Fleet, Mr. and Mrs. Francis McLennan, Mr. and Mrs. Geo. Sumner, Mr. S. Coulson, Mr. J. R. Wilson, Mr. and Mrs. Stanger, Miss Murray, Mr. and Mrs. E. Holton, Mr. and Miss Marler, Mr. A. B. Macfarlane, Mr. and Mrs. Robert Mackay, Miss Mackay, Mr. and Miss Austin, Mr. and Mrs. Fayette Brown, Mr. and Mrs. Roswell Fisher, the Misses Fisher, Mr. and Mrs. John Turnbull, Mr. and the Misses Finley, Dr. and Mrs. Adams, the Misses MacCallum, Miss O'Brien, Miss Thomas, Mr. and Mrs. Gaunt, Dr. and Miss Foley, Mr. and Mrs. Robert, Mr. Charles Holt, Miss Cochrane, Mr. G. F. C. Smith, Miss Symmers, Miss Smith, Mr. George Durnford, Miss Durnford, Mr. and Mrs. Albert Lewis, Mr. Robert Lindsay, Mr. and Mrs. Thomas Tait, Mrs. and Miss Stevenson, Dr. and Miss Lovejoy, Mr. and Miss Bud-den, Mr. and Mrs. A. G. B. Claxton, the Misses Simpson, Dr. Tait McKenzie, Dr. Rnttan, Dr. Ridley Mackenzie, Miss McEachran, Miss Eadie, Mde. Cernu and many others.

To go into any elaborate criticism of this collection, the first loan exhibition of water colors given by the Art Association of Montreal, would be quite unnecessary. Indeed, criticism of any kind is not needed; it would seem almost impertinent to attempt it with the grand examples before one of Turner, Millet, Fortuny, Decamps, David Cox, Prout, Maure, Israels, etc., etc. Let it be rather to call attention to some of the more prominent ones in this notable collection. The picture that will receive the largest share of attention is Millet's pastel, "La Lecon d'Equitation," which has been lent by Mr. James Ross. It is an exquisite thing absorbing one's attention and growing more and more in beauty with study of it. There is also a crayon of Millet's "Mdlle Emilie Millet" that will attract attention. There are no less than four Turner's in the exhibition. Two of them, Fonthill Abbey and an Autumnal Morning are of about the

same period. Another, No. 154, Florence, is of this [painter's later period, of the time when he painted the Venice Canal and Dido Leaving Carthage. The exquisite coloring and grouping of the figures command instant attention.

In a prominent position is one of the most remarkable colors in the exhibition, "The Sultan's Audience," by Arthur Melville. It is a magnificent interior with really marvelous grouping and coloring. It will be a favorite with many. Another Oriental interior is that of a Morocco Carpet Warehouse, by Fortuny. It has been seen before, yet one could not tire of it. There is another and very much smaller example of this master in an "Arab Sheik." Two examples of David Cox, "Warwick Castle" and "A Scene in Wales," apart from the separate beauties of each, serve to show the painter's versatility. Two scenes of Copley Fielding, one of Constable, and yet two others of the modern school, by Swan, are charming. The drawing in the pastel, "The Wounded Lioness," by this latter artist, is very fine. Of Weissenbruch, Bosboom, and Tholen there are the largest number of examples. The thirteen of the former will all, it is safe to say, be carefully studied, one of his Holland scenes in particular showing the atmospheric effect after rain.

A good deal of interest will attach to No. 54, "The Maple Leaf," for it is a very delicate portrait by the President of the R.C.A., Robert Harris. It will repay more than ordinary notice. There are examples of the work of two other Montreal artists in the collection. "Francie," by William Brymner, has already received a great deal of attention here, and has been lent by Mr. James Ross for the exhibition. Another water color by the same artist, "A Cart Load of Sea Weed," has already attracted attention, and is lent by Mr. J. Reid Wilson. The one example of James M. Barnsley, an excellent landscape, is lent by Hon. G. A. Drummond. Of that gifted artist, Allan Edson, whose untimely death has been a loss to art in Canada, there are four examples. All are characteristic and highly prized.

Two examples of the impressionist school claim attention at once partly on account of the vivid coloring. Besnard's pastel, "Etude de Femme," lent by the Hon. Geo. Drummond, is not pretty, yet the wonderful modelling of the nude figure must be admired. It fascinates one, as does also the Renoir pastel of two sisters, almost above it. One of the most attractive of the smaller pictures is the pastel "Autumn" of L'Hermitte. Five examples of the work of Maure have received admiration from all. They are lent by Sir Wm. Van Horne, Dr. Wm. Gardner and Messrs. David Morrice, C. R. Hosmer, E. B. Greenshields and A. B. Macfarlane. Indeed the modern Dutch school is very fully represented. The one example of Prout, a church interior, lent by Mr. R. B. Angus, gives a fine idea of that artist's work. Altogether the collection is one that reflects the highest credit upon the Art Association. That Montreal can boast of such a collection of masters must be a source of congratulation to all. To all, from the connoisseur to the amateur, the effect of viewing it will be the best. Many a visit to the gallery, and a long one too, can be the only means of appreciating such an artistic treat. The public of Montreal can do nothing else but show their appreciation of the Association's labors.

