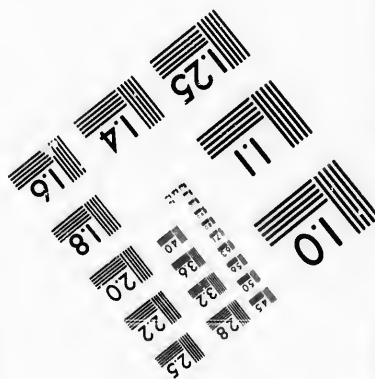
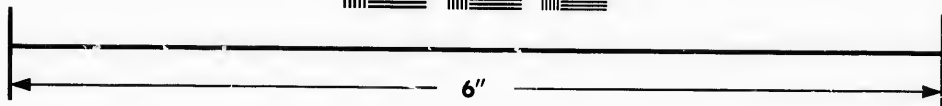
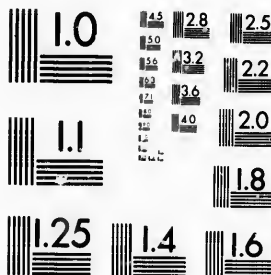


**IMAGE EVALUATION
TEST TARGET (MT-3)**



**Photographic
Sciences
Corporation**

23 WEST MAIN STREET
WEBSTER, N.Y. 14580
(716) 872-4503

**CIHM/ICMH
Microfiche
Series.**

**CIHM/ICMH
Collection de
microfiches.**



Canadian Institute for Historical Microreproductions / Institut canadien de microreproductions historiques

© 1987

Technical and Bibliographic Notes/Notes techniques et bibliographiques

The Institute has attempted to obtain the best original copy available for filming. Features of this copy which may be bibliographically unique, which may alter any of the images in the reproduction, or which may significantly change the usual method of filming, are checked below.

L'Institut a microfilmé le meilleur exemplaire qu'il lui a été possible de se procurer. Les détails de cet exemplaire qui sont peut-être uniques du point de vue bibliographique, qui peuvent modifier une image reproduite, ou qui peuvent exiger une modification dans la méthode normale de filmage sont indiqués ci-dessous.

- Coloured covers/
Couverture de couleur
- Covers damaged/
Couverture endommagée
- Covers restored and/or laminated/
Couverture restaurée et/ou pelliculée
- Cover title missing/
Le titre de couverture manque
- Coloured maps/
Cartes géographiques en couleur
- Coloured ink (i.e. other than blue or black)/
Encre de couleur (i.e. autre que bleue ou noire)
- Coloured plates and/or illustrations/
Planches et/ou illustrations en couleur
- Bound with other material/
Relié avec d'autres documents
- Tight binding may cause shadows or distortion along interior margin/
La reliure serrée peut causer de l'ombre ou de la distorsion le long de la marge intérieure
- Blank leaves added during restoration may appear within the text. Whenever possible, these have been omitted from filming/
Il se peut que certaines pages blanches ajoutées lors d'une restauration apparaissent dans le texte, mais, lorsque cela était possible, ces pages n'ont pas été filmées.
- Additional comments:
Commentaires supplémentaires:
- Coloured pages/
Pages de couleur
- Pages damaged/
Pages endommagées
- Pages restored and/or laminated/
Pages restaurées et/ou pelliculées
- Pages discoloured, stained or foxed/
Pages décolorées, tachetées ou piquées
- Pages detached/
Pages détachées
- Showthrough/
Transparence
- Quality of print varies/
Qualité inégale de l'impression
- Includes supplementary material/
Comprend du matériel supplémentaire
- Only edition available/
Seule édition disponible
- Pages wholly or partially obscured by errata slips, tissues, etc., have been refilmed to ensure the best possible image/
Les pages totalement ou partiellement obscurcies par un feuillet d'errata, une pelure, etc., ont été filmées à nouveau de façon à obtenir la meilleure image possible.

This item is filmed at the reduction ratio checked below/
Ce document est filmé au taux de réduction indiqué ci-dessous.

10X	14X	18X	22X	26X	30X
<input type="checkbox"/>	<input type="checkbox"/>	<input checked="" type="checkbox"/>	<input type="checkbox"/>	<input type="checkbox"/>	<input type="checkbox"/>
12X	16X	20X	24X	28X	32X

The copy filmed here has been reproduced thanks to the generosity of:

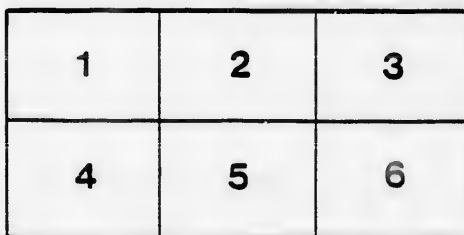
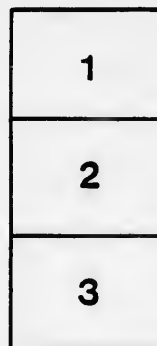
Musée du Château Ramezay,
Montréal

The images appearing here are the best quality possible considering the condition and legibility of the original copy and in keeping with the filming contract specifications.

Original copies in printed paper covers are filmed beginning with the front cover and ending on the last page with a printed or illustrated impression, or the back cover when appropriate. All other original copies are filmed beginning on the first page with a printed or illustrated impression, and ending on the last page with a printed or illustrated impression.

The last recorded frame on each microfiche shall contain the symbol \rightarrow (meaning "CONTINUED"), or the symbol ∇ (meaning "END"), whichever applies.

Maps, plates, charts, etc., may be filmed at different reduction ratios. Those too large to be entirely included in one exposure are filmed beginning in the upper left hand corner, left to right and top to bottom, as many frames as required. The following diagrams illustrate the method:



L'exemplaire filmé fut reproduit grâce à la générosité de:

Musée du Château Ramezay,
Montréal

Les images suivantes ont été reproduites avec le plus grand soin, compte tenu de la condition et de la netteté de l'exemplaire filmé, et en conformité avec les conditions du contrat de filmage.

Les exemplaires originaux dont la couverture en papier est imprimée sont filmés en commençant par le premier plet et en terminant soit par la dernière page qui comporte une empreinte d'impression ou d'illustration, soit par le second plet, selon le cas. Tous les autres exemplaires originaux sont filmés en commençant par la première page qui comporte une empreinte d'impression ou d'illustration et en terminant par la dernière page qui comporte une telle empreinte.

Un des symboles suivants apparaîtra sur la dernière image de chaque microfiche, selon le cas: le symbole \rightarrow signifie "A SUIVRE", le symbole ∇ signifie "FIN".

Les cartes, planches, tableaux, etc., peuvent être filmés à des taux de réduction différents. Lorsque le document est trop grand pour être reproduit en un seul cliché, il est filmé à partir de l'angle supérieur gauche, de gauche à droite, et de haut en bas, en prenant le nombre d'images nécessaire. Les diagrammes suivants illustrent la méthode.

rrata
to

pelure.
n à

RARE COINS FOR SALE BY H. A. DEAN, BELLEVILLE, ONT.

No Auction will be held, but bids will be received on lots up to 1st December, when lots will be distributed to the highest bidder.

Write your offer opposite the pieces and return sheet.

CANADIAN COINS.

	\$	CTS.
Bank of Montreal side view penny. 1838, uncirculated		
Bank of Montreal side view penny. 1839, uncirculated		
The above pennies are the finest known, the former light olive, the latter steel color, and are both excessively rare		
McDermott's Card. New Brunswick, extremely rare, very fine		
Sheaf of Wheat. P. E. Island, extremely rare, very good, good as found		
Weir & Larminje. Encased ten cent stamp, very fine, very rare		
Lauzon. Lead token, very rare, fine		
Maysenholder & Bohle. Very fine, and very rare		
Lesslie & Sons. 2d, extremely fine and very rare		
Lesslie & Sons. 2d, very fine, very rare		
Molson's Card. Still, etc., extremely fine		
Cloriam Regni. 5 sons, a beauty, uncirculated, extremely rare		
Cossack Pennies. Extra fine, rare		
Montl & Lachme R. R. Extra fine, rare		
Colonial Half Dollar. 1822, fine, rare		
Wellington 1-2d Battles. (Silver), uncirculated, rare		
R. H. in Wreath. Penny, half penny and farthing, all extremely fine, and a very rare set in this condition		
R. H. in Wreath. Penny, half penny (two varieties), farthing (two varieties), five pieces, all fine, rare set		
Canada. St. Amant, all incused on blank planchet, rare		
British Sett, Kentucky Silver proof, a gem, obv. Hope presenting two children to liberty, Rev. Britannia seated on shield, excessively rare ..		
British Sett, Kentucky. Bronze proof, a beauty, obv. and rev., same as last, extremely rare		

FOREIGN COPPER COINS.

U. S. Copper Cent. 1793. Rev. chain, no periods, a few pin head marks on obv., very good, and very rare		
Hard Times Token. A steer, a friend to the constitution, Rev. ship, agriculture and commerce, extra fine, scarce		
Talbot, Allum & Lee. 1795, almost a proof		
Barbadoes. Neptune in ear., uncirculated, steel color and bright red, rare		
Bermuda 1793. Ship, bronze proof		
Liberia. 1847. Two cents, beautiful proof		
Liberia. 1862. One cent, proof		
Cambodia. 1860. One and Two cents, bright proofs		
Andorra. 1873. Ten centimes, bright proof		
Patagonia. 1874. Two centavos, bright proof		
Criquetown. 1898. Bright proof, bird		
Orange Free State. 1883. Bright proofs, two pieces		
Sierra Leone. 1791. Penny and cent bronze proofs		
Sierra Leone. 1791. Penny and cent, very fine		
British N. Borneo. 1886. Cent and half cent, bright, uncirculated		
German E. Africa. 1890. Cent, bright, uncirculated		
Cuernsey. 1889. 8, 4, 2, 1 doubles, set bright, uncirculated		
Malta. 1843. Paul Lascaris, 4 tara counter, stamped with head of John the Baptist, fine, rare		
England. 1797. Twopence and penny, extremely fine		
Java. 1800. 1 silver, thick dump, rare		
Egypt. Ptolemy, B.C., Eagles, fine		

SILVER.

England. Victoria, gothic crown, <i>smooth edge</i> , brilliant proof, extremely rare		
" Victoria, gothic crown, lettered edge, proof, and very rare		
" Bank of England dollar, proof		
" Bank of Ireland, 6 shillings, brilliant proof, rare		
" Victoria, 1889, half crown, uncirculated		
"		

“	Victoria, gothic crown, lettered edge, proof, and very rare.		
“	Bank of England dollar, proof.		
“	Bank of Ireland, 6 shillings, brilliant proof, rare		
“	Victoria, 1889, half crown, uncirculated.		
“	Geo. II, half crown, 1746, Lima under bust, very fine, rare.		

England.	Victoria, gothic crown, <i>smooth edge</i> , brilliant proof, extremely rare.		
“	Victoria, gothic crown, lettered edge, proof, and very rare.		
“	Bank of England dollar, proof.		
“	Bank of Ireland, 6 shillings, brilliant proof, rare		
“	Victoria, 1889, half crown, uncirculated.		
“	Geo. II, half crown, 1746, Lima under bust, very fine, rare		
“	Anne shilling, 1711, fine.		
“	Charles I, half crown, king on horse, good.		
“	Charles I, shilling, very good.		
“	Elizabeth, sixpence, 1575, very good		
“	Henry VIII, groat, fine		
Scotland.	David II, Edinburgh groat, fine		
Ireland.	Henry VIII, groat, fine, rare		
France.	Henry II, 1560, testoon, fine		
America.	Standish Barry 3d, July 4, 90, small hole neatly plugged over head, extremely fine, excessively rare		
America.	Chalmer's Annapolis shilling, doves pulling worm, very fine, extremely rare		
Madras.	Half and quarter pagoda, God Vishnu, very fine and rare		
Ceylon.	1821. 1 rix dollar, proof, rare		
Siam.	1868. 1, $\frac{1}{2}$, $\frac{1}{4}$ tical, uncirculated.		
Burmah.	LuDuc Rupee peacock, uncirculated		
Turkey.	Dollar and quarter dollar, uncirculated.		
Hindustan.	Zodiac rupee, gemini, very good and very rare		
Japan.	Dollar and ten cents, uncirculated, two pieces		
Saxony.	Jno. Geo. I, crown, 1st centennial Augsburg confession, extremely fine.		
Saxony.	Jno. Geo. II, crown, 1666, extremely fine, rare		
Saxony.	Jno. Casimir and Jno. Ernest, crown, 1611, good, scarce		
Saxony.	Maurice, crown, 1552, extremely fine		
Saxony.	Eight brothers, crown, 1611, good.		
Saxony.	George, crown, English coat of arms, very fine.		
Brunswick & Luneburg.	Anton Ulrick, crown, 1703, extremely fine.		
Brunswick & Luneburg.	John Frederick, crown, 1667, horse, very fine		
Brabant.	Albert and Elizabeth, crown, 1618, superb specimen of this fine crown		
Sweden.	Christina, crown, 1643, salvator mundi, etc., figure of Christ very fine, rare		
Brandenberg.	George and Albert, crown 1544, very fine		
Zurich.	Crown of 40 batz, 1813, uncirculated.		
Bavaria.	Maximilian Joseph, 1770, crown, fine		
Malta.	Emil de Rohan, crown, 1790, very fine, rare		
Florence.	Ferdinand II, crown, 1635, very rare		
Germany.	Leopold (hog mouth), crown 1684, extra fine.		
Austria.	Ferdinand, double crown, extra fine.		
Venice.	Republic, 1848, dollar, uncirculated.		
Denmark.	Christian IV, 1624, half crown, very fine, very rare.		
Lucca & Piombino.	Felix and Eliza, crown, 1808, extra fine.		
Papal States.	Gregory XVI, crown, extra fine		
Lupec.	Crown, 1752, arms, fine, rare		
Austria.	Maria Theresa, 1780, crown, uncirculated		
Frankfort.	Crown, view of city, 1772, uncirculated.		
Spain.	Alfonso XII, dollar, very fine.		
Spain.	Charles IV, 1807, dollar, very good		

GOLD.

United States.	Half eagles, 1795, 1798, 1806, 1807, extra fine.		
United States.	Gold dollars, 1849 (3), 1850-51-52-53-54-55-73, all extra fine		
United States.	Gold dollars, 1889, ten pieces, all uncirculated.		
Honduras.	Gold dollar, 1848, extra fine		
France	10 francs, 1859, extra fine		
Nuremburg.	1-16 ducat, smallest gold coin, uncirculated		
England.	Geo. III, spade guinea, 1798, uncirculated		
England.	Geo. III, spade guinea, 1794, extra fine		
England.	Geo. III, $\frac{1}{2}$ spade guinea, 1787, uncirculated		
England.	Geo. III, $\frac{1}{2}$ spade guinea, 1797, extra fine.		
England.	Geo. III, $\frac{1}{4}$ guinea, 1762, extra fine		
England.	Geo. III, $\frac{1}{3}$ guinea, 1800, extra fine.		

