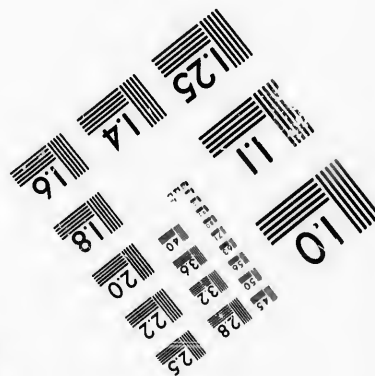
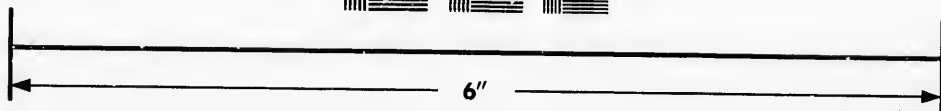
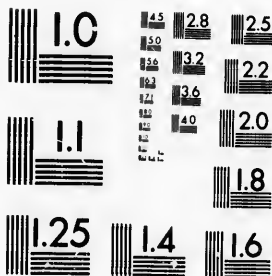


**IMAGE EVALUATION
TEST TARGET (MT-3)**



**Photographic
Sciences
Corporation**

23 WEST MAIN STREET
WEBSTER, N.Y. 14580
(716) 872-4503



**CIHM/ICMH
Microfiche
Series.**

**CIHM/ICMH
Collection de
microfiches.**



Canadian Institute for Historical Microreproductions / Institut canadien de microreproductions historiques



© 1986

Technical and Bibliographic Notes/Notes techniques et bibliographiques

The Institute has attempted to obtain the best original copy available for filming. Features of this copy which may be bibliographically unique, which may alter any of the images in the reproduction, or which may significantly change the usual method of filming, are checked below.

L'Institut a microfilmé le meilleur exemplaire qu'il lui a été possible de se procurer. Les détails de cet exemplaire qui sont peut-être uniques du point de vue bibliographique, qui peuvent modifier une image reproduite, ou qui peuvent exiger une modification dans la méthode normale de filmage sont indiqués ci-dessous.

Coloured covers/
Couverture de couleur

Covers damaged/
Couverture endommagée

Covers restored and/or laminated/
Couverture restaurée et/ou pelliculée

Cover title missing/
Le titre de couverture manque

Coloured maps/
Cartes géographiques en couleur

Coloured ink (i.e. other than blue or black)/
Encre de couleur (i.e. autre que bleue ou noire)

Coloured plates and/or illustrations/
Planches et/ou illustrations en couleur

Bound with other material/
Relié avec d'autres documents

Tight binding may cause shadows or distortion along interior margin/
La reliure serrée peut causer de l'ombre ou de la distorsion le long de la marge intérieure

Blank leaves added during restoration may appear within the text. Whenever possible, these have been omitted from filming/
Il se peut que certaines pages blanches ajoutées lors d'une restauration apparaissent dans le texte, mais, lorsque cela était possible, ces pages n'ont pas été filmées.

Coloured pages/
Pages de couleur

Pages damaged/
Pages endommagées

Pages restored and/or laminated/
Pages restaurées et/ou pelliculées

Pages discoloured, stained or foxed/
Pages décolorées, tachetées ou piquées

Pages detached/
Pages détachées

Showthrough/
Transparence

Quality of print varies/
Qualité inégale de l'impression

Includes supplementary material/
Comprend du matériel supplémentaire

Only edition available/
Seule édition disponible

Pages wholly or partially obscured by errata slips, tissues, etc., have been refilmed to ensure the best possible image/
Les pages totalement ou partiellement obscurcies par un feuillet d'errata, une pelure, etc., ont été filmées à nouveau de façon à obtenir la meilleure image possible.

Additional comments:
Commentaires supplémentaires:

[Printed ephemera] [4] p. There are some creases in the middle of the pages.

This item is filmed at the reduction ratio checked below/
Ce document est filmé au taux de réduction indiqué ci-dessous.

10X	14X	18X	22X	26X	30X
<input type="checkbox"/>	<input type="checkbox"/>	<input type="checkbox"/>	<input type="checkbox"/>	<input checked="" type="checkbox"/>	<input type="checkbox"/>
12X	16X	20X	24X	28X	32X

The copy filmed here has been reproduced thanks to the generosity of:

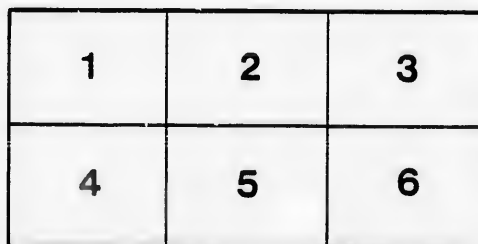
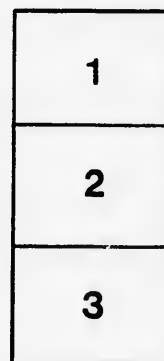
D. B. Weldon Library
University of Western Ontario
(Regional History Room)

The images appearing here are the best quality possible considering the condition and legibility of the original copy and in keeping with the filming contract specifications.

Original copies in printed paper covers are filmed beginning with the front cover and ending on the last page with a printed or illustrated impression, or the back cover when appropriate. All other original copies are filmed beginning on the first page with a printed or illustrated impression, and ending on the last page with a printed or illustrated impression.

The last recorded frame on each microfiche shall contain the symbol \rightarrow (meaning "CONTINUED"), or the symbol ∇ (meaning "END"), whichever applies.

Maps, plates, charts, etc., may be filmed at different reduction ratios. Those too large to be entirely included in one exposure are filmed beginning in the upper left hand corner, left to right and top to bottom, as many frames as required. The following diagrams illustrate the method:



L'exemplaire filmé fut reproduit grâce à la générosité de:

D. B. Weldon Library
University of Western Ontario
(Regional History Room)

Les images suivantes ont été reproduites avec le plus grand soin, compte tenu de la condition et de la netteté de l'exemplaire filmé, et en conformité avec les conditions du contrat de filmage.

Les exemplaires originaux dont la couverture en papier est imprimée sont filmés en commençant par le premier plat et en terminant soit par la dernière page qui comporte une empreinte d'impression ou d'illustration, soit par le second plat, selon le cas. Tous les autres exemplaires originaux sont filmés en commençant par la première page qui comporte une empreinte d'impression ou d'illustration et en terminant par la dernière page qui comporte une telle empreinte.

Un des symboles suivants apparaîtra sur la dernière image de chaque microfiche, selon le cas: le symbole \rightarrow signifie "A SUIVRE", le symbole ∇ signifie "FIN".

Les cartes, planches, tableaux, etc., peuvent être filmés à des taux de réduction différents. Lorsque le document est trop grand pour être reproduit en un seul cliché, il est filmé à partir de l'angle supérieur gauche, de gauche à droite, et de haut en bas, en prenant le nombre d'images nécessaire. Les diagrammes suivants illustrent la méthode.

LONDON PTD & LITHO. CO.

MICHIGAN, OHIO
CANADIAN CIRCUIT
EIGHTEEN
THEATRES

CLEVELAND, CINCINNATI, BUFFALO,
DETROIT, TORONTO,
TOLEDO, LONDON, HAMILTON,
WOODSTOCK, SAGINAW,
GRAND RAPIDS, BAY CITY AND
JACKSON.



C. J. WHITNEY. A. E. ROOTE. ONTARIO.
LESSEE. MANAGER.



W. SMITH.

E. HOLLAND.

W. S. PARTRIDGE.

SMITH & BROS.

THE
LEADING
SANITARY
PLUMBERS
AND
HEATING
ENGINEERS
OF
WESTERN
ONTARIO.

376
RICHMOND STREET,

LONDON.

OPPOSITE GRAND OPERA HOUSE BUILDING.

A full stock of Supplies always on hand.

TELEPHONE 538.

(London Printing and Litho. Co.)

LADIES! THE ONLY WAY TO GET HELP IS THROUGH THE "FREE PRESS" WANT COLUMN.



**Parisian
Steam
Laundry**

73 & 75 DUNDAS STREET.

BRANCH OFFICES:

226 Dundas St. 752 Waterloo. 410 Hamilton Rd.
280 " " 372 Pall Mall. 251 Wellington.
310 " " 309 Richmond. 338 Rielout.
632 " " 435

J. K. SPRY, Manager.

HUESTON'S

**LIVERY,
Goupe & Cab Stables**
WELLINGTON STREET.

Finest Horses and Carriages in the City.
OPEN DAY AND NIGHT. TELEPHONE 441.

ROBT. HUESTON,
Proprietor.

H. MCKENNA,
—FOR—

Choice Cigars, Tobaccos
AND PIPES.

ALWAYS OPEN
..... AFTER THE OPERA.

225 DUNDAS STREET.

SPRING



1894.

WE have just received the finest assortment of Spring Hats ever shown in the city. We are leaders for correct shapes, try us. A pleasure to show goods.

Rivard

LONDON'S
FASHIONABLE
HATTER AND
FURRIER

400 RICHMOND
STREET.

WILLIAMS' Pianos CANADA'S FAVORITE

Cannot be excelled for touch, singing quality, delicacy and great power of tone, with highest excellence of workmanship.

ALL THE LATEST VOCAL AND INSTRUMENTAL MUSIC RECEIVED AS PUBLISHED.

Musical Instruments of all kinds, Strings and Fittings AT LOWEST PRICES.

R. S. WILLIAMS & SON, 171 DUNDAS STREET, LONDON, ONT.
J. A. CRODEN, Manager.



PROGRAMME

Matinee and Night, Saturday, Feb. 17th.
1894

PROF. G. NORRIS'

**Canine
Paradox**



*A Grand Display of Intelligent
Dogs.*

DO EVERYTHING BUT TALK.

50—IN NUMBER—50

(Programme continued on next page.)

SOMETHING NEW.

Opera English & Canadian
Caramels. Chocolate Creams.

VERY FINEST
French Crystalized
FRUITS.

Olives in Bulk.

.. Fresh Roquefort Cheese..

FITZGERALD, SCANDRETT & CO.
169 Dundas Street.

ESTABLISHED 1831.

**H. DAVIS & SON,
WATCHMAKERS
AND
JEWELLERS**

DEALERS IN
Watches, Clocks, Jewellery, Spectacles,
Silver Plated Ware, &c.

170 DUNDAS ST., LONDON, ONT.

W. T. STRONG

Dispensing
Chemist,

184 Dundas Street,
LONDON, - ONTARIO.

BROWN'S

Central Shoe Store,
145 DUNDAS ST.



We inventory February 20th, and are determined to reduce our Stock as much as possible before that date. To do this, we have cut down prices to a figure heretofore unheard of for such quality of goods. The Great Reduction will place the best selected stock of Staple and High-Grade Shoes within the reach of all.

REMEMBER, WE KEEP NO INFERIOR OR SHODDY GOODS.

EVERY LINE OF . . .
BOOTS, SHOES, SLIPPERS, RUBBERS, OVERSHOES,
OVERDRAUGHTS, LEGGINGS, MOCCASINS, ETC.,
IS THE BEST OF ITS KIND.

Our position enables us to sell cheaper than any other shoe store in this western section; but this Special Reduction cannot fail to further convince the Public, that for reliable footwear in all Standard Styles, "Brown's is undoubtedly the Cheapest."

THIS CUT-DOWN-PRICE

—will also apply to our—
HANDSOME AMERICAN DESIGNS IN
LADIES' AND GENTS' DRESS SHOES,
WALKING, SKATING AND HOCKEY BOOTS;
Also our Complete, and unexcelled (for Style and
Fines) assortment of YOUTHS', MISSES', BOYS', GIRLS'
AND BABY SHOES.

NO RESERVE.

John S. Brown,
TELEPHONE 881.

IF YOU WANT THE BEST, TAKE THE "FREE PRESS." ALL THE NEWS!

— TRY —
SOUTHGOTTS
 FOR Nice Suit
 Fancy Vest
 .. or Trousers
 NEAT LINE OF LIGHT-WEIGHT OVERCOATINGS IN STOCK.
Satisfaction Assured. Prices Right.
361 RICHMOND STREET.

I-I-I-I-I-I-I-I-I-I

PRINTERS
 LITHOGRAPHERS
 ENGRAVERS

The
London
 Printing and
 Lithographing
 Co'y,
 SUCCESSORS TO FREE PRESS
 PRINTING AND LITHO.
 DEPARTMENTS.

OFFICE, "FREE PRESS" BUILDING. BEST WORK AT MODERATE PRICES.

I-I-I-I-I-I-I-I-I-I

TECUMSEH HOUSE
 LONDON.



Directly opposite G.T.R. depot; street railway past the doors; convenient to all the wholesale and retail business houses of city, making it the most desirable hotel in the city; elevator, and heated throughout with steam.

Porter in attendance on arrival of all trains.

RATES, \$2.00 AND \$2.50 PER DAY,

ACCORDING TO LOCATION.

No Extra Charge For Baggage.

C. W. DAVIS, PROP.

LATEST SHAPES
 — In American and English —
Spring Hats
 JUST OPENED.
GRAHAM BROS.,
 Leading Hatters and Furnishers.

«Programme Continued.»

CAST OF CHARACTERS.

Tip.....	} Clown Dogs.	} Mex. Hairless Dog
Dan Rice.....		
Bruiser.....	} Poodle	} Esquimaux
Snyder.....		
Teddy, the greatest of all—Ladder Dog.....	} Pug Dog	} King is Champion of the World.
Punch and Judy.....		
Punch, only Pug Dog ever known to walk a rope.		
Sport—The Hoop-of-Fire Dog.....	Pointer	In their Novel Brother Acts
Frank Mayo and Joe Jefferson.....	Male Impersonator.....	Scottish Terrier
Jim Tough—	Champion Hindfooter and Female Impersonator.....	Mexican Dog
Trip—	Ten Brook, Star, Trix, King, Keno, Pedro, Queen, Wonderful Leaping Greyhounds.	King is Champion of the World.
Lilly.....	The Wonderful Somersault Dog	Russian Poodles
Ben Butler, Cleveland, Texas Jack.....	Yum Yum, Paris, Tom and Jerry.....	Pug Dogs
Fred, Spot, Tony and Dick.....	Dude, Nyds and Bruce.....	Esquimaux
Shoofly, Peach, Snowball and Shik.....	Fly and Dish Rags.....	Thoroughbred Pointers
Sammy, Billy and Jack.....	Sanko.....	Water Spaniels
Prince.....	Sky Terrier Cigar.....	Very Ordinary Dog
Dash.....	Italian Hound Baby and Boby.....	Silver Terriers
Sleepy Fred.....	Steepest.....	Cross between Spaniel and Setter
Doty, Smallest White Poodle in the World—Pet of Ladies and Children	Steepest.....	Laziest Dog in Town

SYNOPSIS.

ACT I.—On the rise of the curtain there is to be seen some eighteen dogs, arranged in a semi-circle with Clown Dogs (Dan Rice and Bruiser) each dog understanding his part and displaying a degree of intelligence, answering to the word of command of their master, and going through all sorts of tricks too numerous to mention. Closing scene, School Out.

ACT II.—Punch, the only Pug Dog ever known to walk a rope. Bruce and Tip in their racing act, Dan Rice as the Judge. Sport, the Hoop of Fire dog. Jeff. and Mayo, Shooting scene. Lilly, the wonderful Backward Somersault Dog. Tip and Jim Tough, Impersonators—Tip as Annie Rooney, Jim Tough as McGinty.

ACT III.—Teddy, the wonderful Ladder Dog. The Revolving Canine Pyramid, a picture once seen never to be forgotten.

ACT IV.—The wonderful Leaping Greyhounds. King, the Champion, assisted by Keno, Pedro, Star and Trix. Bruiser taking the part of clown.

NOTE.—Prof. Norris offers one thousand dollars to produce the equal of his wonderful Leaping Greyhound, King.

Prof. Norris' Book, Simple Methods of Educating and Training Dogs. Price, Ten Cents.

PROF. NORRIS, Sole Proprietor and Manager.

(Programme continued on last page.)

McLEAN'S HARDWARE

— FOR —

Bissell's Carpet Sweepers.

WE CAN SHOW YOU TWELVE DIFFERENT STYLES SAME AS ARE NOW DISPLAYED BY THE BISSELL COMPANY AT THE WORLD'S FAIR.

CALL AND SEE THESE GOODS

— AT —

McLEAN'S HARDWARE,
 151 Dundas Street.

Wm. Stevely & Son,
 — THE LEADING DEALERS IN —
STOVES, RANGES,
 .. AND ..
HOUSE FURNISHING GOODS.
 OUR STOCK IS THE LARGEST.
 OUR PRICES THE LOWEST.
362 RICHMOND STREET.
 'PHONE 452.

W. T. STRONG,
Dispensing
Chemist,
184 DUNDAS ST.,
LONDON, ONT.

.. FOR ..
Fine Etchings....
 — AND —
Engravings
 — TRY —
O. B. GRAVES,
 222 DUNDAS STREET.



BRENER BROS.
 LONDON, ONT.

FOR SALE AT
JOE RANKIN'S
 OPPOSITE MASONIC TEMPLE.

EDY BROS.

The Artistic Photographers,

—RECEIVED—

Three First Prizes

DIPLOMA

For Finest Display of Photography
AT WESTERN FAIR, 1893.

Cabinet Photos, \$3 per doz.

EDY BROS.,

214 DUNDAS STREET.

The HUB

Restaurant,

203 & 205 DUNDAS STREET.

For a NICE LUNCH after the
Opera, go to the

Hub Restaurant.

Steaks, Chops, Chicken,
Oysters, Etc.

OPEN TILL 12.00 P.M.

J. W. MARTIN, Prop.

(Late of the Martin House.)

«Programme Concluded.»

During the evening, incidental to the stage performance, the ORCHESTRA of the Grand Opera House, under the direction of MR. FRED. L. EVANS, will perform the following selections

OVERTURE—"Diamond Necklace," Herman
WALTZ—"Mit Hundert Atmosphären," Gungl
MARCH—"Berkshire," Koch
LANCERS—"Grand Duchess," Offenbach

The above programme subject to transposition

N. B.—The Orchestra of the Grand Opera House may be secured for engagements outside the theatre, by applying at or addressing the Box Office.

NEXT + ATTRACTION

Monday, Tuesday, Wednesday,
February 19, 20 and 21.

MATINEE Tuesday & Wednesday, at 3.30 p.m.

Prof. D. M. Bristol

And his big City

.. EQUESTRIAN CURRICULUM ..

30 Educated Horses, Ponies and Mules, including all the old Equine Actors.

The only equine comedian DENVER.
The only equine mathematician SULTAN.
The only equine trapeze performer TONY.
The only equine rope-walker DYNAMITE.
The great military drill by 25 handsome Arabians, and all the great wonders.

The greatest show on earth. Grand family matinees on Tuesday and Wednesday at 3.30 p. m. Prices 25, 35 and 50 cents; matinee prices, 25 and 35 cents. At the matinee children will be admitted to any part for 20 cents and given a FREE PONY RIDE.

A FINE PERFORMANCE

is a satisfactory return for your money, but when you can get from us a superior quality of Coal or Wood at the same price you would pay for an inferior quality, it is even more satisfactory. When in need of "warmth," try us.

CAMERON'S

421 RICHMOND STREET,
and BURWELL STREET at G. T. R.

FIND YOUR FORTUNE IN LUCKY
SANTO DOMINGO
INVESTMENT BONDS guaranteed by the SANTO DOMINGO GUARANTY CO.
Allotments take place monthly, and are payable in U. S. gold coin in sums of \$160,000, \$440,000, \$20,000, etc.
5,692 Bonds paid monthly, aggregating \$574,880. Subscription fees, \$10, \$5, \$2, \$1, 50c. and 25c.
Apply to Local Agents, or address,
ANTONIO MORA, CITY OF SANTO DOMINGO, SANTO DOMINGO.

Roses, Carnations,

Palms,

Ferns, Bulbs,

J. GAMMAGE & SONS,

213 Dundas Street.

INDIAN... TEA IMPORTING HOUSE.

NEW BLENDS, DELICIOUS AND ECONOMICAL, AT MODERATE PRICES.

"English Breakfast," "Five o'clock Tea," & "Club House" Blends.
60c. 50c. 45c.

These Blends are standard selections of choice Teas. Highly recommended to families for their fine quality and economical properties.

S. FUGE,

—IMPORTER OF—
CHOICE TEAS
TELEPHONE 858.

212 Dundas St.
LONDON.

