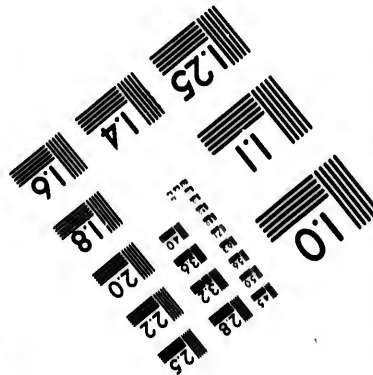
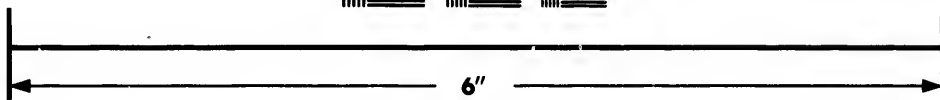
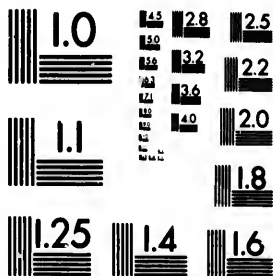


**IMAGE EVALUATION  
TEST TARGET (MT-3)**



**Photographic  
Sciences  
Corporation**

23 WEST MAIN STREET  
WEBSTER, N.Y. 14580  
(716) 872-4503

1.4 1.8  
1.8 2.2  
2.2 2.5  
2.5 2.8  
2.8 3.2  
3.2 3.6  
3.6 4.0  
4.0 4.5

**CIHM/ICMH  
Microfiche  
Series.**

**CIHM/ICMH  
Collection de  
microfiches.**



**Canadian Institute for Historical Microreproductions / Institut canadien de microreproductions historiques**

10  
11  
12  
13  
14  
15  
16  
17  
18  
19  
20

**© 1986**

Technical and Bibliographic Notes/Notes techniques et bibliographiques

The Institute has attempted to obtain the best original copy available for filming. Features of this copy which may be bibliographically unique, which may alter any of the images in the reproduction, or which may significantly change the usual method of filming, are checked below.

L'Institut a microfilmé le meilleur exemplaire qu'il lui a été possible de se procurer. Les détails de cet exemplaire qui sont peut-être uniques du point de vue bibliographique, qui peuvent modifier une image reproduite, ou qui peuvent exiger une modification dans la méthode normale de filmage sont indiqués ci-dessous.

- Coloured covers/  
Couverture de couleur
- Covers damaged/  
Couverture endommagée
- Covers restored and/or laminated/  
Couverture restaurée et/ou pelliculée
- Cover title missing/  
Le titre de couverture manque
- Coloured maps/  
Cartes géographiques en couleur
- Coloured ink (i.e. other than blue or black)/  
Encre de couleur (i.e. autre que bleue ou noire)
- Coloured plates and/or illustrations/  
Planches et/ou illustrations en couleur
- Bound with other material/  
Relié avec d'autres documents
- Tight binding may cause shadows or distortion along interior margin/  
La reliure serrée peut causer de l'ombre ou de la distorsion le long de la marge intérieure
- Blank leaves added during restoration may appear within the text. Whenever possible, these have been omitted from filming/  
Il se peut que certaines pages blanches ajoutées lors d'une restauration apparaissent dans le texte, mais, lorsque cela était possible, ces pages n'ont pas été filmées.
- Additional comments:/  
Commentaires supplémentaires: [Printed ephemera] 1 sheet (verso blank)

- Coloured pages/  
Pages de couleur
- Pages damaged/  
Pages endommagées
- Pages restored and/or laminated/  
Pages restaurées et/ou pelliculées
- Pages discoloured, stained or foxed/  
Pages décolorées, tachetées ou piquées
- Pages detached/  
Pages détachées
- Showthrough/  
Transparence
- Quality of print varies/  
Qualité inégale de l'impression
- Includes supplementary material/  
Comprend du matériel supplémentaire
- Only edition available/  
Seule édition disponible
- Pages wholly or partially obscured by errata slips, tissues, etc., have been refilmed to ensure the best possible image/  
Les pages totalement ou partiellement obscurcies par un feuillet d'errata, une pelure, etc., ont été filmées à nouveau de façon à obtenir la meilleure image possible.

This item is filmed at the reduction ratio checked below/  
Ce document est filmé au taux de réduction indiqué ci-dessous.

10X	14X	18X	22X	26X	30X
<input type="checkbox"/>	<input type="checkbox"/>	<input type="checkbox"/>	<input type="checkbox"/>	<input checked="" type="checkbox"/>	<input type="checkbox"/>
12X	16X	20X	24X	28X	32X

The copy filmed here has been reproduced thanks to the generosity of:

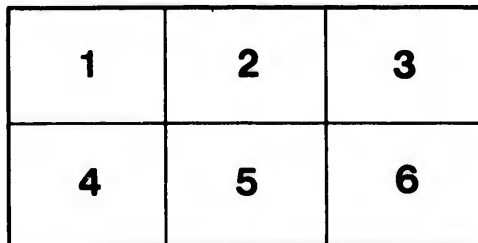
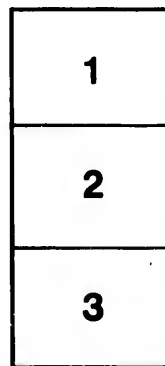
Library of the Public  
Archives of Canada

The images appearing here are the best quality possible considering the condition and legibility of the original copy and in keeping with the filming contract specifications.

Original copies in printed paper covers are filmed beginning with the front cover and ending on the last page with a printed or illustrated impression, or the back cover when appropriate. All other original copies are filmed beginning on the first page with a printed or illustrated impression, and ending on the last page with a printed or illustrated impression.

The last recorded frame on each microfiche shall contain the symbol  $\rightarrow$  (meaning "CONTINUED"), or the symbol  $\nabla$  (meaning "END"), whichever applies.

Maps, plates, charts, etc., may be filmed at different reduction ratios. Those too large to be entirely included in one exposure are filmed beginning in the upper left hand corner, left to right and top to bottom, as many frames as required. The following diagrams illustrate the method:



L'exemplaire filmé fut reproduit grâce à la générosité de:

La bibliothèque des Archives  
publiques du Canada

Les images suivantes ont été reproduites avec le plus grand soin, compte tenu de la condition et de la netteté de l'exemplaire filmé, et en conformité avec les conditions du contrat de filmage.

Les exemplaires originaux dont la couverture en papier est imprimée sont filmés en commençant par le premier plat et en terminant soit par la dernière page qui comporte une empreinte d'impression ou d'illustration, soit par le second plat, selon le cas. Tous les autres exemplaires originaux sont filmés en commençant par la première page qui comporte une empreinte d'impression ou d'illustration et en terminant par la dernière page qui comporte une telle empreinte.

Un des symboles suivants apparaîtra sur la dernière image de chaque microfiche, selon le cas: le symbole  $\rightarrow$  signifie "A SUIVRE", le symbole  $\nabla$  signifie "FIN".

Les cartes, planches, tableaux, etc., peuvent être filmés à des taux de réduction différents. Lorsque le document est trop grand pour être reproduit en un seul cliché, il est filmé à partir de l'angle supérieur gauche, de gauche à droite, et de haut en bas, en prenant le nombre d'images nécessaire. Les diagrammes suivants illustrent la méthode.

1

t

t  
o  
u

t  
t

o  
t

C  
p  
r  
i  
E

# Timber Duties.

## RESOLUTIONS OF THE SELECT COMMITTEE OF THE HOUSE OF COMMONS, REPORTED TO THE HONOURABLE HOUSE ON THE 14th AUGUST, 1835.

1. Resolved, That it is the opinion of this Committee, that the present mode of taking the Duties on Deals is susceptible of improvement, and that this Committee would recommend that a mode be adopted which shall approach more nearly to a payment according to the contents of the Deals.

2. Resolved, That it is the opinion of this Committee, that the difference of Duty of 45s. now imposed by Law upon Timber the produce of Europe, as compared with Timber the produce of our North American Colonies, is too great, and may be reduced.

3. Resolved, That it is the opinion of this Committee, that, having a due regard to the interests which have been created in the British North-American Colonies by the system hitherto pursued, and to the representations of the Shipping Interest, a reduction of the protective Duty, not exceeding 15s. per load, appears to them to be a fair arrangement.

4. Resolved, That it is the opinion of this Committee, that such reduction be made, so far as may be consistent with the interests of the Revenue, without any augmentation of the Duty on Colonial Timber.

5. Resolved, That it is the opinion of this Committee, that, in any alteration made, such alteration should not affect the shipments made in the year 1836.

6. Resolved, That it is the opinion of this Committee, that there should be an uniform mode of taking the Duty on Deals throughout the United Kingdom.

---

## NORTH AMERICAN COLONIAL ASSOCIATION.

*At a Special Meeting of the Committee, held at the Committee-Room, No. 11,  
Leadenhall Street, on Tuesday, the 18th of August, 1835,*

ALEXANDER GILLESPIE, JUN. ESQ., IN THE CHAIR.

Read the Resolutions of the Select Committee on the Timber Duties, reported to the House of Commons on 14th inst.

Whereupon the following Resolutions were unanimously agreed to —

1. Resolved, That the prosperity of the British North-American Colonies, and their means of employing British Shipping, of paying for British Manufactures, and of affording support to Emigrants from the United Kingdom, are mainly dependant upon the Timber Trade.

2. Resolved, That in the opinion of this Committee, the reduction proposed to be made in the protection at present afforded to Colonial Timber, will deprive the Colonies of that valuable trade, except to a comparatively small extent.

3. Resolved, That it is the duty of all parties interested in the prosperity of our North-American Colonies, to resist such alteration by all legitimate means in their power.

4. Resolved, That copies of these Resolutions be transmitted to the different Commercial Bodies and to influential individuals in the Colonies, and also to parties in the United Kingdom interested in the Colonial Trade, with an earnest request that they will co-operate with the United Shipping and Colonial Committee, in their opposition to the proposed Measure, by Petitions to both Houses of Parliament, and otherwise.

(Signed)

ALEX. GILLESPIE, JUN.,

CHAIRMAN.

