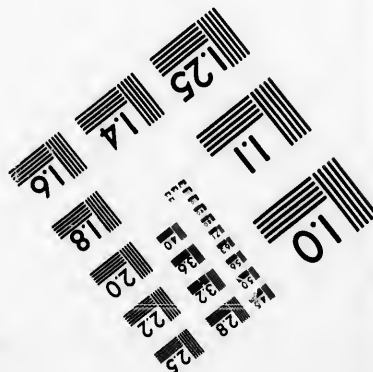
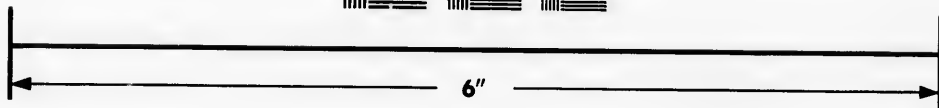
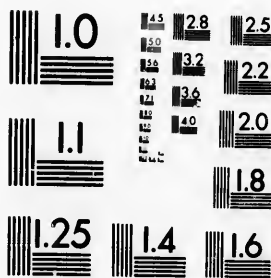


**IMAGE EVALUATION
TEST TARGET (MT-3)**



**Photographic
Sciences
Corporation**

23 WEST MAIN STREET
WEBSTER, N.Y. 14580
(716) 872-4503

**CIHM
Microfiche
Series
(Monographs)**

**ICMH
Collection de
microfiches
(monographies)**



Canadian Institute for Historical Microreproductions / Institut canadien de microreproductions historiques

© 1993

Technical and Bibliographic Notes / Notes techniques et bibliographiques

The Institute has attempted to obtain the best original copy available for filming. Features of this copy which may be bibliographically unique, which may alter any of the images in the reproduction, or which may significantly change the usual method of filming, are checked below.

L'Institut a microfilmé le meilleur exemplaire qu'il lui a été possible de se procurer. Les détails de cet exemplaire qui sont peut-être uniques du point de vue bibliographique, qui peuvent modifier une image reproduite, ou qui peuvent exiger une modification dans la méthode normale de filmage sont indiqués ci-dessous.

- Coloured covers/
Couverture de couleur
- Covers damaged/
Couverture endommagée
- Covers restored and/or laminated/
Couverture restaurée et/ou pelliculée
- Cover title missing/
Le titre de couverture manque
- Coloured maps/
Cartes géographiques en couleur
- Coloured ink (i.e. other than blue or black)/
Encre de couleur (i.e. autre que bleue ou noire)
- Coloured plates and/or illustrations/
Planches et/ou illustrations en couleur
- Bound with other material/
Relié avec d'autres documents
- Tight binding may cause shadows or distortion along interior margin/
La reliure serrée peut causer de l'ombre ou de la distorsion le long de la marge intérieure
- Blank leaves added during restoration may appear within the text. Whenever possible, these have been omitted from filming/
Il se peut que certaines pages blanches ajoutées lors d'une restauration apparaissent dans le texte, mais, lorsque cela était possible, ces pages n'ont pas été filmées.

- Coloured pages/
Pages de couleur
- Pages damaged/
Pages endommagées
- Pages restored and/or laminated/
Pages restaurées et/ou pelliculées
- Pages discoloured, stained or foxed/
Pages décolorées, tachetées ou piquées
- Pages detached/
Pages détachées
- Showthrough/
Transparence
- Quality of print varies/
Qualité inégale de l'impression
- Continuous pagination/
Pagination continue
- Includes index(es)/
Comprend un (des) index

Title on header taken from: /
Le titre de l'en-tête provient:

- Title page of issue/
Page de titre de la livraison
- Caption of issue/
Titre de départ de la livraison
- Masthead/
Générique (périodiques) de la livraison

Additional comments: /
Commentaires supplémentaires:

This item is filmed at the reduction ratio checked below /
Ce document est filmé au taux de réduction indiqué ci-dessous.

10X	14X	18X	22X	26X	30X
<input type="checkbox"/>	<input type="checkbox"/>	<input checked="" type="checkbox"/>	<input type="checkbox"/>	<input type="checkbox"/>	<input type="checkbox"/>
12X	16X	20X	24X	28X	32X

The copy filmed here has been reproduced thanks to the generosity of:

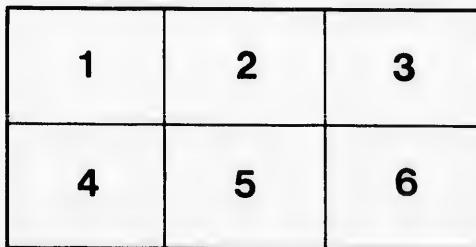
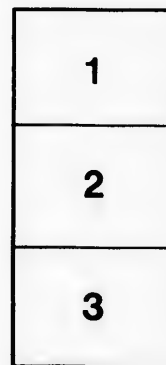
National Library of Canada

The images appearing here are the best quality possible considering the condition and legibility of the original copy and in keeping with the filming contract specifications.

Original copies in printed paper covers are filmed beginning with the front cover and ending on the last page with a printed or illustrated impression, or the back cover when appropriate. All other original copies are filmed beginning on the first page with a printed or illustrated impression, and ending on the last page with a printed or illustrated impression.

The last recorded frame on each microfiche shall contain the symbol \rightarrow (meaning "CONTINUED"), or the symbol ∇ (meaning "END"), whichever applies.

Maps, plates, charts, etc., may be filmed at different reduction ratios. Those too large to be entirely included in one exposure are filmed beginning in the upper left hand corner, left to right and top to bottom, as many frames as required. The following diagrams illustrate the method:



L'exemplaire filmé fut reproduit grâce à la générosité de:

Bibliothèque nationale du Canada

Les images suivantes ont été reproduites avec le plus grand soin, compte tenu de la condition et de la netteté de l'exemplaire filmé, et en conformité avec les conditions du contrat de filmage.

Les exemplaires originaux dont la couverture en papier est imprimée sont filmés en commençant par le premier plat et en terminant soit par la dernière page qui comporte une empreinte d'impression ou d'illustration, soit par le second plat, selon le cas. Tous les autres exemplaires originaux sont filmés en commençant par la première page qui comporte une empreinte d'impression ou d'illustration et en terminant par la dernière page qui comporte une telle empreinte.

Un des symboles suivants apparaîtra sur la dernière image de chaque microfiche, selon le cas: le symbole \rightarrow signifie "A SUIVRE", le symbole ∇ signifie "FIN".

Les cartes, planches, tableaux, etc., peuvent être filmés à des taux de réduction différents. Lorsque le document est trop grand pour être reproduit en un seul cliché, il est filmé à partir de l'angle supérieur gauche, de gauche à droite, et de haut en bas, en prenant le nombre d'images nécessaire. Les diagrammes suivants illustrent la méthode.

10. 4
J. 1

E L E

VERAL

FOR THE

H

F O S

ntered acc
e year 187
ter of Agr

"DAD

48

J. R. FOSTER'S

PRIVATE

ELEGRAPHIC CODE,

—)COVERING(—

GENERAL BUSINESS TRANSACTIONS,

FOR THE USE OF HIS CORRESPONDENTS ONLY.

Registered Cable Address:

Foster, Moncton."

—):o:(—

Entered according to Act of Parliament of Canada,
the year 1879, by J. R. Foster, in the Office of the
Minister of Agriculture."

MONCTON, N. B.

"DAILY TIMES" PRINT, MONCTON.

1879:

HE 7677
G 7
F 67
1879

II

J. R. FOSTER,

MILLERS AND SHIPPERS AGENTS

REPRESENTING IN THE MARITIME PROVINCES

Ontario, Chicago & Western

MILLERS AND SHIPPERS



FLOUR, MEAL, GRAIN
Seeds and Provisions



Forwarding Agents

---):o:(---

All kinds of Goods Bought and Sold on Commission.
Liberal Advances made on Consignments.

---):o:(---

IMPORTER OF AND WHOLESALE DEALER IN

TEAS.

Moncton, - - - - - N

Most sent
dings, but i
apply to th
My name h
cton, N. B.
messages sh

“ FOS
In sending r
to the Inc
vored to ma
of the sende
message has
may do so by
Alphabet be

A	=	1
B	=	2
C	=	3
D	=	4
E	=	5
F	=	6
G	=	7
H	=	8
I	=	9

After making
representing the
age, and add
es. For exa

R	A	S	C
18	1	19	3
E	N	S	U
5	14	19	21

figures under
to the above t
275, and the
“ Rascal, F
“ Rascal, F
word “ Cele
receiver of t

Instructions.

Most sentences have been classed under different headings, but it is not intended that a sentence should apply to the heading it is placed under. My name being registered at the Telegraph offices, Moncton, N. B., London and Liverpool, G. B., as Foster, messages should simply be addressed—

“FOSTER, Moncton.”

In sending messages great aid will be found in referring to the Index, which, for this purpose, I have endeavored to make as complete as possible. If the sender of a message wishes to be satisfied that a message has been received and translated correctly, he may do so by the following plan. Let each letter of the Alphabet be represented by a number, as follows:—

A = 1	J = 10	S = 19
B = 2	K = 11	T = 20
C = 3	L = 12	U = 21
D = 4	M = 13	V = 22
E = 5	N = 14	W = 23
F = 6	O = 15	X = 24
G = 7	P = 16	Y = 25
H = 8	Q = 17	Z = 26
I = 9	R = 18	

After making up the telegram add up the numbers representing the different letters used in the words of the message, and add at the end of the message the total in figures. For example—

R	A	S	C	A	L.	P	E	R	C	H.	
18	1	19	3	1	12.	16	5	18	3	8	
E	N	S	U	A	L.	E	S	C	O	R	T.
5	14	19	21	1	12	5	19	3	15	18	20

Figures under each letter represents its value according to the above table, and these figures added together are 275, and the message should be sent off thus:—

“Rascal, Perch, Sensual, Escort, 275;” or
 “Rascal, Perch, Sensual, Escort, Celestial.”

word “Celestial” represents 275.

receiver of the message will therefore add up the

numbers representing the letters used in the message and if the total corresponds with the checking number the message is in all probability correct.

This plan is also invaluable in checking the accuracy of a message and the means of deciding which the false word really is without having to repeat the telegram. Supposing the message had been transmitted correctly except the word "Escort," which was perfectly unrecognizable, but the meaning of the other words of the message suggested the word as probable, to find out if it really the correct word add up the figures represented by the letters of the correctly transmitted words, and deduct this total from the checking number, thus:—

Checking number.....	27
Total figures of correct words.....	19
Total of numbers represented by letters of words wrongly transmitted.....	8
The numbers representing the letters of the word "Escort," add up.....	8

Therefore it may be taken as a certainty that the word "Escort," is the correct word, it agreeing with the sum of the message and also the checking number.

—:o:—

In telegraphing £190. s 17. d 2½ stlg, correspondents use the following words, thus:—

"Candor, Apology, Aloud, Skittles."

In telegraphing quotations for Flour, Meal, etc., use the following example:—

Suppose flour is worth \$6.75 per barrel, correspondents will use the word "Citadel."

My correspondents will please take notice that I have entered this "Telegraphic Code" at "Department of Culture," Ottawa, under "The Copyright Act of 1879." I therefore especially request that it shall not be used by any person corresponding with any other person or persons other than myself—without authority.

I also wish it distinctly understood that upon termination of relations as correspondents with any of my customers, they shall immediately, on application, return me any copy or copies then in their hands of said "Telegraphic Code."

J. R. FOSTER,

MILLERS AND SHIPPERS AGENTS

MONCTON, N. B., Nov. 1879.

N A M

tain,
tained,
tinnence,
tinent,
truse,
trusely,
tieve,
tievment,
ting,

nowledge,
n,
quaint,

mittal,
mitting,
bat,
ng,
n,
nable,

ss,
al,
ally,
ary,
en,

minate,
e,

nant,
t,

ly,

ion,

CO

F

F

C

F

F

C

N

N

NAMES OF ARTICLES.

WINTER WHEAT.

- No. 1 White Wheat.
- No. 2 " "
- No. 1 Treadwell.
- No. 2 " "
- No. 1 Red,
- No. 2 " "
- No. 1 Canada Spring Wheat.
- No. 1 " " for Seed.
- No. 1 Fancy Minnesota Hard Spring Wheat, for Seed.
- No. 1 American Pure Fyfe Wheat, for Seed.
- No. 2 Canada Spring Wheat.
- No. 3 " "
- Wheat not graded but equal to _____

CORN AND CORN MEAL.

- White Corn.
- Yellow " "
- High Mixed.
- Low Mixed.
- No. 1.
- No. 2.
- Rejected Corn
- No Grade " "
- Damaged " "
- Kiln Dried Corn Meal.
- Fine Yellow K. Dried Corn Meal, in Bbbs.
- 100 Bbbs. Fine Yellow Kiln Dried Corn Meal, delivered at _____
- 125 do. do. do. do.
- Coarse Kiln Dried Corn Meal, in Bbbs.
- do. do. do. in Bags, 100 lbs. each.
- Fine Kiln Dried Corn Meal, in Bags, 100 lbs. each.
- Fresh Ground Corn Meal, in Bags, 100 lbs. each.
- Corn not graded, but equal to _____

OATS.

- No. 1.
- No. 2.

l in the mess
 checking num
 ng the accurac
 which the fa
 eat the telegr
 smitted corre
 perfectly unre
 words of the n
 o find out if
 res represented
 words, and dec
 us:—
 27
 193
 ters of — 80
 80
 ters of 80
 ty that the v
 ng with the s
 umber.
 rrespondents
 skittles."
 c, Meal, etc.,
 el, correspond
 notice that I
 Department of
 ght Act of 18
 all not be use
 or persons
 hat upon term
 ch any of my
 lication, retu
 nds of said "
FOSTER,
HIPPERS AGE

tain,
 tained,
 tinence,
 tinent,
 truse,
 trusely,
 here.
 iverment,
 iny,
 y.
 knowledge,
 n,
 uaint,
 ittal,
 itting,
 bat,
 ng,
 on.
 onable,
 ss,
 al,
 ally,
 ary,
 en,
 inate,
 e,
 e,
 quant,
 t,
 ly,
 ion,
 ,

	<i>Oats forward,</i>
<i>Adduce,</i>	No. 1 Choice White, for Seed, delivered at.....
<i>Admire,</i>	No. 1 Choice White, for Seed.
<i>Address,</i>	No. 2 White.
<i>Adept.</i>	Rejected.
<i>Adequate.</i>	No. 1 Mixed.
<i>Adhere,</i>	No. 2 " "
<i>Administering,</i>	Oats not graded, but equal to——

WHITE CANADA PEAS.

<i>Adorned,</i>	No. 1.
<i>Adrift,</i>	No. 2.
<i>Adult,</i>	No. 3.
<i>Adventure,</i>	No. 1.—In Barrels.
<i>Advertise,</i>	No. 2. " "
<i>Advocate,</i>	No. 3. " "

BARLEY.

<i>Affirmable,</i>	Extra Canada.
<i>Affirming,</i>	No. 1 " "
<i>Afflict,</i>	No. 2 " "
<i>Afflicted,</i>	No. 3 " "
<i>Affliction,</i>	Barley not graded, but equal to——

Specified Quantities.

<i>Affray,</i>	25 bags.	<i>Agreement,</i>	1200 bbls.
<i>Affront,</i>	50 bags.	<i>Aground,</i>	1300 bbls.
<i>Afloat,</i>	75 bags.	<i>Ahead,</i>	1400 bbls.
<i>Afoot,</i>	100 bags.	<i>Ail,</i>	1500 bbls.
<i>Afore,</i>	150 bags.	<i>Ailment,</i>	2000 bbls.
<i>Afraid,</i>	200 bags.	<i>Aimless,</i>	2500 bbls.
<i>Afresh,</i>	220 bags.	<i>Aisle,</i>	1 car load.
<i>Afterclap,</i>	250 bags.	<i>Ajax,</i>	2 car loads.
<i>Against,</i>	25 bbls.	<i>Akin,</i>	3 car loads.
<i>Agape,</i>	50 bbls.	<i>Alabaster,</i>	4 ear loads.
<i>Aged,</i>	75 bbls.	<i>Alamode,</i>	5 car loads.
<i>Agency,</i>	100 bbls.	<i>Albino,</i>	6 car loads.
<i>Agedly,</i>	125 bbls.	<i>Album,</i>	7 car loads.
<i>Agent,</i>	200 bbls.	<i>Albumen,</i>	8 car loads.
<i>Aggravate,</i>	300 bbls.	<i>Alchemy,</i>	9 car loads.
<i>Aggravation,</i>	400 bbls.	<i>Alcove,</i>	10 car loads.
<i>Aggregate,</i>	500 bbls.	<i>Alder,</i>	12 car loads.
<i>Aghast,</i>	600 bbls.	<i>Alderman,</i>	15 car loads.
<i>Agitate,</i>	700 bbls.	<i>Alert,</i>	20 car loads.
<i>Agitating,</i>	800 bbls.	<i>Alertness,</i>	25 car loads.
<i>Agony,</i>	900 bbls.	<i>Algebra,</i>	30 car loads.
<i>Agree,</i>	1000 bbls.	<i>Alineate,</i>	40 car loads.
<i>Agreeable,</i>	1100 bbls.	<i>Alight,</i>	50 car loads.

Quota

e, 1
li, 3
y, 3
ge, 5
riance, 5
nce, 7
rator, 7
ted, 9
ting, 5
ment, 11-
oice, 3
le, 13-
ling, 7
rment, 15-
ion, 1
nanc, 1
ghty, 1
nd, 1
e, 2
2
i, 2
ca, 3
3
mate, 3
3
gam, 4
gamate, 4
s, 4
sed, 4
sing, 5
eur, 5
ssdor, 5
tion, 5
lance, 6
scade, 6
sh, 6
shed, 6
shing, 7
7
able, 7
7
st, 8

r Seed, doive
at.....
r Seed.

Quotations and Quantities.

e,	1-16	Amiss,	8½	Applicant,	19½
li,	1-8	Amity,	8½	Apply,	19½
qual to	3-16	Ammonia,	8¾	Appoint,	19½
AS.	1-4	Amnesty,	9	Appraise,	20
giance,	5-16	Amongst,	9½	Apprehend,	20½
nce,	3-8	Amorous,	9½	Approach,	20½
rator,	7-16	Amplify,	9½	Appropriate,	20½
t,	1-2	Amputate,	10	Apron,	21
ted,	9-16	Amulet,	10	Aptness,	21½
ting,	5-8	Amuse,	10½	Aqueduct,	21½
ment,	11-16	Anatomy,	10½	Arab,	21½
ice,	3-4	Ancestor,	10½	Arcade,	22
de,	13-16	Anew,	11½	Archduke,	22½
ding,	7-8	Angel,	11½	Archives,	22½
ment,	15-16	Angling,	11½	Ardent,	22½
sion,	1	Angry,	12	Argument,	23
mac,	1½	Anguish,	12½	Arise,	23½
ghty,	1½	Angular,	12½	Armature,	23½
nd,	1½	Animal,	12½	Armor,	23½
e,	2	Animated,	13	Armpit,	24
at. 1200 bbls.	2½	Ankle,	13½	Army,	24½
1300 bbls.	2½	Annex,	13½	Arrest,	24½
00 bbls.	3	Announce,	13½	Arrogant,	24½
bls.	3½	Antagonist,	14	Arsenal,	25
000 bbls.	3½	Antelope,	14½	Arsenic,	25½
500 bbls.	3½	Anthem,	14½	Artery,	25½
r load.	4	Antidote,	14½	Artisan,	25½
r load.	4½	Antique,	15	Artist,	26
r loads.	4½	Anvil,	15½	Ashamed,	26½
4 car loads.	5	Apace,	15½	Ashore,	26½
5 car loads.	5½	Apart,	15½	Aside,	26½
car loads.	5½	Apartment,	16	Asleep,	27
car loads.	5½	Aperture,	16½	Aspect,	27½
8 car loads.	5½	Apex,	16½	Assail,	27½
9 car loads.	6	Apollo,	16½	Assault,	27½
car loads.	6½	Apology,	17	Assay,	28
car loads.	6½	Apoplexy,	17½	Assemble,	28½
at, 15 car loads	6½	Apostle,	17½	Assets,	28½
car loads.	7	Apparel,	17½	Assign,	28½
25 car loads.	7½	Appealed,	18	Assume,	29
30 car loads.	7½	Appendage,	18½	Asthma,	29½
40 car loads.	7½	Appendix,	18½	Astonish,	29½
car loads.	8	Appetite,	18½	Astray,	29½
		Applaud.	19	Astride,	30

Asunder,	30 $\frac{1}{2}$	Bamboo,	42 $\frac{1}{2}$	Befall,	
Asylum,	30 $\frac{1}{2}$	Banana,	43	Befit,	
Athlete,	30 $\frac{1}{2}$	Bandage,	43 $\frac{1}{2}$	Befriend,	
Attain,	31	Bandit,	43 $\frac{1}{2}$	Beget,	
Attempt,	31 $\frac{1}{2}$	Banish,	43 $\frac{1}{2}$	Begetting,	
Attentive,	31 $\frac{1}{2}$	Banner,	44	Beggar,	
Attest,	31 $\frac{1}{2}$	Banquet,	44 $\frac{1}{2}$	Begin,	
Attire,	32	Bantam,	44 $\frac{1}{2}$	Beginner,	
Attitude,	32 $\frac{1}{2}$	Bankrupt,	44 $\frac{1}{2}$	Begotten,	
Attorney,	32 $\frac{1}{2}$	Baptismal,	45	Begrudge,	
Attract,	32 $\frac{1}{2}$	Baptist,	45 $\frac{1}{2}$	Beguile,	
Attraction,	33	Barber,	45 $\frac{1}{2}$	Behalf,	
Attribute,	33 $\frac{1}{2}$	Barefoot,	45 $\frac{1}{2}$	Behave,	
Auction,	33 $\frac{1}{2}$	Bargain,	46	Behaving,	
Audible,	33 $\frac{1}{2}$	Baritone,	46 $\frac{1}{2}$	Behold,	
Audience,	34	Barometer,	46 $\frac{1}{2}$	Beholding,	
Auditor,	34 $\frac{1}{2}$	Baron,	46 $\frac{1}{2}$	Beholder,	
Aunt,	34 $\frac{1}{2}$	Baroness,	47	Behoof,	
Austria,	34 $\frac{1}{2}$	Barracks,	47 $\frac{1}{2}$	Belate,	
Author,	35	Base,	47 $\frac{1}{2}$	Belfry,	
Authentic,	35 $\frac{1}{2}$	Baseless,	47 $\frac{1}{2}$	Belief,	
Autograph,	35 $\frac{1}{2}$	Basement,	48	Belle,	
Autumn,	35 $\frac{1}{2}$	Bashful,	48 $\frac{1}{2}$	Bellowing,	
Avalanche,	36	Basil,	48 $\frac{1}{2}$	Belong,	
Avenge,	36 $\frac{1}{2}$	Bassoon,	48 $\frac{1}{2}$	Beloved,	
Avenging,	36 $\frac{1}{2}$	Bastard,	49	Beneath,	
Avenue,	36 $\frac{1}{2}$	Bastile,	49 $\frac{1}{2}$	Benedict,	
Avoid,	37	Bastinade,	49 $\frac{1}{2}$	Beneft,	
Avowal,	37 $\frac{1}{2}$	Bathe,	49 $\frac{1}{2}$	Benevolent,	
Awake,	37 $\frac{1}{2}$	Baton,	50	Benumb,	
Award,	37 $\frac{1}{2}$	Battalion,	50 $\frac{1}{2}$	Bengal,	
Awful,	38	Battery,	50 $\frac{1}{2}$	Bequeath,	
Awhile,	38 $\frac{1}{2}$	Battlement,	50 $\frac{1}{2}$	Besetting,	
Awkward,	38 $\frac{1}{2}$	Bauble,	51	Besiege,	
Awning,	38 $\frac{1}{2}$	Bayonet,	51 $\frac{1}{2}$	Besieging,	
Axis,	39	Bazaar,	51 $\frac{1}{2}$	Besmead,	
Babel,	39 $\frac{1}{2}$	Beach,	51 $\frac{1}{2}$	Bespatter,	
Baboon,	39 $\frac{1}{2}$	Beadle,	52	Bestow,	
Bachelor,	39 $\frac{1}{2}$	Beastly,	52 $\frac{1}{2}$	Bestowing,	
Backward,	40	Beaten,	52 $\frac{1}{2}$	Bestir,	
Badge,	40 $\frac{1}{2}$	Beauty,	52 $\frac{1}{2}$	Betake,	
Baffle,	40 $\frac{1}{2}$	Beaver,	53	Bethink,	
Baggage,	40 $\frac{1}{2}$	Became,	53 $\frac{1}{2}$	Betide,	
Bailiff,	41	Bedaub,	53 $\frac{1}{2}$	Betimes,	
Balcony,	41 $\frac{1}{2}$	Bedbug,	53 $\frac{1}{2}$	Betoken,	
Baleful,	41 $\frac{1}{2}$	Pedeck,	54	Betray,	
Ballast,	41 $\frac{1}{2}$	Bedlam,	54 $\frac{1}{2}$	Betrayal,	
Balloon,	42	Bedlamite,	54 $\frac{1}{2}$	Betraying,	
Balsam,	42 $\frac{1}{2}$	Bedrid,	54 $\frac{1}{2}$	Betroth,	
Balmoral,	42 $\frac{1}{2}$	Bedstead,	55	Betrothal	

ween, 6
 wixt, 6
 el, 6
 rage, 6
 ail, 6
 sailing, 6
 ilder, 6
 itch, 6
 tching, 6
 nd, 70
 70
 cal, 70
 ny, 70
 mist, 71
 68, 71
 ed, 71
 ry, 71
 72
 is, 72
 rds, 72
 cle, 72
 apy, 73
 73
 73
 it, 73
 p., 74
 nth, 74
 74
 74
 74
 75
 75
 75
 75
 75
 76
 76
 76
 76
 77
 77
 77
 77
 78
 78
 78
 79
 79
 79
 80

Befall,	67½	Blighting,	80½	Bounteous,	92½
Befit,	68	Blind,	80½	Bountiful,	93
Befriend,	68½	Blinding,	80½	Bounty,	93½
Beget,	68½	Blindfold,	81	Bowlder,	93½
Begetting,	68½	Blissful,	81½	Boxing,	93½
Beggar,	69	Blister,	81½	Bracelet,	94
Begin,	69½	Blithe,	81½	Bracket,	94½
Beginner,	69½	Blithsome,	82	Brackish,	94½
Begotten,	69½	Blockade,	82½	Braggart,	94½
Begrudge,	69½	Bloody,	82½	Brahmin,	95
Beguile,	70	Bloodless,	82½	Bramble,	95½
Behalf,	70½	Bloodshot,	83	Branch,	95½
Behave,	70½	Bloomer,	83½	Branching,	95½
Behaving,	70½	Blooming,	83½	Brandy,	96
Behold,	71	Blotch,	83½	Bravado,	96½
Beholder,	71½	Blouse,	84	Breach,	96½
Behoof,	71½	Blubber,	84½	Bread,	96½
Belate,	72	Bludgeon,	84½	Breadth,	97
Belay,	72½	Bluff,	84½	Breaker,	97½
Belfry,	72½	Bluffing,	85	Breakfast,	97½
Belief,	72½	Blunder,	85½	Breastpin,	97½
Belle,	73	Blunt,	85½	Breathe,	98
Bellowing,	73½	Border,	85½	Breathing,	98½
Belong,	73½	Boast,	86	Breeding,	98½
Beloved,	73½	Boasting,	86½	Brethren,	98½
Beneath,	74	Boastful,	86½	Brevet,	99
Benedict,	74½	Bodily,	86½	Bribery,	99½
Benefit,	74½	Bodkin,	87	Bride,	99½
Benevolent,	74½	Bolster,	87½	Bridal,	99½
Benumb,	75	Bolivar,	87½	Bridewell,	100
Bengal,	75½	Bombay,	87½	Bridling,	101
Bequeath,	75½	Bombarded,	88	Brigade,	102
Besetting,	75½	Bondage,	88½	Brigadier,	103
Besiege,	76	Bonfire,	88½	Brightly,	104
Besieging,	76½	Bonny,	88½	Brilliant,	105
Besmear,	76½	Bonus,	89	Brimful,	106
Bespatter,	76½	Booby,	89½	Brimstone,	107
Bestow,	77	Booming,	89½	Brittle,	108
Bestowing,	77½	Borax,	89½	Broach,	109
Bestir,	77½	Border,	90	Broaching,	110
Betake,	77½	Borrow,	90½	Broadly,	111
Bethink,	78	Bosom,	90½	Broadcast,	112
Betide,	78½	Botanist,	90½	Broadside,	113
Betimes,	78½	Botany,	91	Brocade,	114
Betoken,	78½	Bother,	91½	Brogan,	115
Betray,	79	Bottomless,	91½	Brother,	116
Betrayal,	79½	Bounce,	91½	Brotherly,	117
Betraying,	79½	Bouncing,	92	Browbeat,	118
Betroth,	79½	Boundary,	92½	Brownish,	119
Betrothal	80	Boundless,	92½	Bruise,	120

Brunette,	121	Caldron,	171	Carpenter,	mpagne,
Brutal,	122	Calendar,	172	Carpeting,	mpion,
Bubble,	123	Calibre,	173	Carriage,	ce,
Bubbling,	124	Calico,	174	Carry,	cing,
Bucket,	125	Caliph,	175	Cartoon,	ddler,
Buckle,	126	Calmy,	176	Cartridge,	ageful,
Buckram,	127	Calinness,	177	Cascade,	ting,
Buckskin,	128	Calomet,	178	Casemate,	s,
Buff,	129	Calumet,	179	Cashmere,	el,
Buffet,	130	Cambric,	180	Casing,	lain,
Buffoon,	131	Cameo,	181	Castigate,	let,
Buffoonery,	132	Camp,	182	Castle,	ter,
Bugle,	133	Camping,	183	Castor,	acter,
Bulb,	134	Camphene,	184	Castrate,	ade,
Bulbous,	135	Canary,	185	Casual,	coal,
Bullock,	136	Candid,	186	Catacomb,	otte,
Bulwer,	137	Candidly,	187	Catalogue,	ty,
Bungle,	138	Candidate,	188	Catching,	tise,
Bungling,	139	Candling,	189	Catchup,	ity,
Burden,	140	Candor,	190	Catgut,	
Burdock,	141	Canebrake,	191	Cathartic,	ing,
Bureau,	142	Canine,	192	Cathedral,	nam,
Burglar,	143	Canker,	193	Catholic,	tel,
Burial,	144	Cannibal,	194	Catheter,	pen,
Burlesque,	145	Canopy,	195	Catnip,	pnness,
Burner,	146	Canon,	196	Caucus,	kmate,
Burning,	147	Canvas,	197	Cautic,	rful,
Bursting,	148	Capable,	198	Caution,	nical;
Burthen,	149	Caper,	199	Cavalry,	ist,
Busily,	150	Capital,	200	Cavern,	ub,
Bustle,	151	Capsize,	201	Cavity,	ubim,
Butterfly,	152	Capstan,	202	Cayenne,	,
Button,	153	Capsule,	203	Cedar,	nut,
Buttress,	154	Captain,	204	Celebrate,	en,
Buxom,	155	Captivate,	205	Celestial,	,
Buzzard,	156	Captor,	206	Cement,	,
By way,	157	Carat,	207	Censure,	tain,
Byword,	158	Caravan,	208	Centre,	lain,
Cabbage,	159	Carbon,	209	Centipede,	hood,
Cabin,	160	Carbonate,	210	Century,	ish,
Cabinet,	161	Carbuncle,	211	Chaff,	less,
Caboose,	162	Carcass,	212	Chafing,	ren,
Cackling,	163	Carding,	213	Chagrin,	,
Cactus,	164	Cardinal,	214	Chain,	ney,
Cadence,	165	Careful,	215	Chaining,	57
Cadet,	166	Careless,	216	Chairman,	
Cajole,	167	Carmine,	217	Chaise,	
Calabash,	168	Carnal,	218	Chalk,	
Calamity,	169	Carnival,	219	Challenge,	
Calculate,	170	Carousal,	220	Chamber,	

71	Carpenter,	mpagne,	355	China,	575	Climb,	790
72	Carpeting,	mpion,	360	Chinese,	580	Climbing,	795
73	Carriage,	nce,	365	Chink,	585	Clinker,	800
74	Carry,	ncing,	370	Chisel,	590	Closely,	805
75	Cartoon,	ndler,	375	Chivalry,	595	Closeted,	810
76	Cartridge,	ageful,	380	Cholic,	600	Clothes,	815
77	Cascade,	iting,	385	Choose,	605	Clothing,	820
78	Casemate,	s,	390	Chorus,	610	Cloudy,	825
79	Cashmere,	el,	395	Chosen,	615	Cloudless,	830
80	Casing,	lain,	400	Chowder,	620	Clownish,	835
81	Castigate,	let,	405	Christian,	625	Club,	840
82	Castle,	ter,	410	Chronic,	630	Clumsy,	845
83	Castor,	meter,	415	Chubby,	635	Cluster,	850
84	Castrate,	ade,	420	Chuckle,	640	Clutch,	855
85	Casual,	coal,	425	Church,	645	Coach,	860
86	Catacomb,	lotte,	430	Churlish,	650	Coachman,	865
87	Catalogue,	ity,	435	Cigar,	655	Coarse,	870
88	Catching,	hisc,	440	Cinder,	660	Coast,	875
89	Catchup,	ity,	445	Cinnamon,	665	Coasting,	880
90	Catgut,		450	Cistern,	670	Coax,	885
91	Cathartic,	ing,	455	Citadel,	675	Coaxing,	890
92	Cathedral,	ham,	460	Citizen,	680	Cobbler,	895
93	Catholic,	pen,	465	Civilian,	685	Cobweb,	900
94	Catheter,	ten,	470	Claimant,	690	Cockade,	905
95	Catnip,	pness,	475	Clammy,	695	Cockney,	910
96	Caucus,	kmate,	480	Claret,	700	Codger,	915
97	Caustic,	rful,	485	Clarify,	705	Coddle,	920
98	Caution,	nical,	490	Clarinet,	710	Coffin,	925
99	Cavalry,	nist,	495	Class,	715	Cogent,	930
00	Cavern,	ub,	500	Classify,	720	Cognac,	935
01	Cavity,	ubim,	505	Clatter,	725	Cohabit,	940
02	Cayenne,		510	Cleaning,	730	Cohesion,	945
03	Cedar,	nut,	515	Cleanse,	735	Collapse,	950
04	Celebrate,	ten,	520	Cleaver,	740	Colleague,	955
05	Celestial,		525	Cleft,	745	Collide,	960
06	Cement,		530	Clergy,	750	Collusion,	965
07	Censure,	tain,	535	Clergyman,	755	Colonist,	970
08	Center,	lain,	540	Clerk,	760	Colony,	975
09	Centipede,	hood,	545	Clerking,	765	Color,	980
00	Century,	ish,	550	Clerkship,	770	Colorless,	985
01	Chaff,	less,	555	Client,	775	Column,	990
02	Chafing,	ren,	560	Climate,	780	Combat,	995
03	Chagrin,		565	Climax,	785	Combatant,	1,000
04	Chain,	ney,	570				
05	Chaining,						
06	Chairman,						
07	Chaise,						
08	Chalk,						
09	Challenge,						
00	Chamber,						

Your Letter of — Receive

Deploy.....	1st.	Destitute.....
Deplume.....	2d.	Detailing.....
Deponent.....	3d.	Detective.....
Depravity.....	4th.	Dethrone.....
Depth.....	5th.	Devastate.....
Deputy.....	6th.	Develop.....
Derange.....	7th.	Deviate.....
Design.....	8th.	Devil.....
Designate.....	9th.	Devilish.....
Desk.....	10th.	Deviltry.....
Desolate.....	11th.	Devout.....
Despair.....	12th.	Dewdrop.....
Desperate.....	13th.	Diadem.....
Despotie.....	14th.	Diagram.....
Despotism.....	15th.	Dialect.....
Destiny.....	16th.	

We refer you to our Letter of

Dialist.....	1st.	Dilate.....
Dialogue.....	2d.	Dilatory.....
Diameter.....	3d.	Diligent.....
Diamond.....	4th.	Dilution.....
Diaper.....	5th.	Diminish.....
Diarist.....	6th.	Dimly.....
Dibble.....	7th.	Dimple.....
Dictate.....	8th.	Dingle.....
Diction.....	9th.	Diploma.....
Dictum.....	10th.	Direction.....
Different.....	11th.	Directly.....
Difficult.....	12th.	Directory.....
Diffuse.....	13th.	Direful.....
Digest.....	14th.	Dirty.....
Dignify.....	15th.	Disable.....
Digress.....	16th.	

re refer

gree
 flow.....
 ppear.....
 rm.....
 ster.....
 and.....
 ard.....
 ern.....
 charge.....
 ple.....
 claim.....
 lose.....
 ord.....
 over.....
 reet.....
 ass.....

TATE

ress, Ma
 er, Act
 lope, Un

For
 Act
 Un
 ay, Thi
 t, Mar
 em, Qui
 on, We
 n, For
 ct, No
 ne, No
 on, Wha

ve, Plea
 d, Wha
 ion, Wha

Thin
 se, Thin

Mark
 Our n

As so
 al, Mark

We refer you to your Letter of---

Receive

ite.....
ng.....
ive.....
ne.....
ate.....
p.....
e.....
h.....
y.....
op.....
1.....
m.....

agree 1st.
allow 2d.
appear..... 3d.
arm..... 4th.
aster..... 5th.
and..... 6th.
ard..... 7th.
ern..... 8th.
harge..... 9th.
ple..... 10th.
laim..... 11th.
lose..... 12th.
ord..... 13th.
over..... 14th.
reet..... 15th.
iss..... 16th.

Disdain 17th.
Disdainful..... 18th.
Disease..... 19th.
Disgorge..... 20th.
Disguise..... 21st.
Disgust..... 22d.
Dishonest..... 23d.
Disjoin..... 24th.
Dislocate..... 25th.
Dislodge..... 26th.
Dismal..... 27th.
Dismast..... 28th.
Dismiss..... 29th.
Dismount..... 30th.
Disoblige..... 31st.

STATE OF THE MARKET.

Letter of

r.....
ph.....
y.....
t.....
em.....
ron.....
m.....
ct.....
ne.....
on.....
ve.....
d.....
ion.....
t.....
se.....
m.....
l.....

Market strong, holders firm.
Active demand for export.
Under influence of demand in —, this market is strong.
Foreign markets strong and higher.
Active demand for future delivery.
Unfavorable weather causes delay in shipping
Think have nearly touched bottom.
Market firm.
Quiet.
Weak.
Foreign market weak.
No demand for export.
No demand for future delivery.
What is your confidential opinion in reference to future prospects of markets?
Please wire state of the markets.
What are future prospects of foreign markets?
What are future prospects of home or local markets?
Think future markets will be strong and higher.
Think future markets will be weak and prices lower on account of ————
Markets over-stocked.
Our markets are over-stocked—cannot make large sales.
As soon as markets are again bare will push sales.
Markets very much excited, owing to——

ABOUT BUYING.

(CUSTOMER.)

Ibex,	Buy immediately.
Identical,	Buy as soon as possible.
Idle,	Buy at about _____
Idolatry,	Buy at not over _____
Igniting,	Buy in store.
Ignorant,	Buy delivered from store.
Illness,	Buy afloat.
Imagine,	Buy on board cars.
Imbibing,	Buy buyer's option.
Imbitter,	Buy seller's option.
Immerge,	Buy and ship.
Immoral,	Buy and ship at once.
Impart,	Buy at once, and ship as soon as possible.
Impatient,	Buy for my (or our) account.
Impeached,	Buy for account of _____
Impel,	Buy and ship for account of _____
Impetuate,	Buy and ship if you can lay down here a
Implicate,	Buy and ship if you can lay down in —
Imploing,	Buy immediately and ship when you can freight at _____
Impolite,	Buy and hold for further orders.
Imposing,	Buy at not over quotations in letter.
Impotent,	Buy at prices you name.
Imprint,	Buy at prices you name or a little high
Impudent,	Buy to arrive.
Impulsive,	Buy when cheap lots offer.
Incline,	Buy if no material change.
Include,	Buy in my short.
Income,	Buy if you can hold on margin.
Incubate,	Buy if you can draw part on time.
Indelible,	Buy if you can draw half on time.
Index,	Buy if you can draw at _____ days.
Indian,	Buy if you can draw at _____ days Bill L attached and hold for payment of
Indicant,.	Buy if you can draw at _____ days Bill L given up on acceptance.
Indict,	Buy if strictly prime.
Indigence,	Buy if quality is choice.
Indignant,	Buy on the best terms.
Indolent,	Buy to-day at the best prices you can.
Industry,	Buy if foreign advices are higher.
Infallible,	Buy according to your judgment.
Infamy,	Buy part if you cannot get all.
Infantry,	Buy in when you can without loss, incl all charges.

soon as possible
 unt.
 t of _____
 lay down here a
 lay down in —
 ip when you ca
 orders.
 ns in letter.
 or a little high
 er.
 e.
 margin.
 t on time.
 f on time.
 — days.
 — days Bill L
 or payment of
 — days Bill L
 ance.
 ices you can.
 e higher.
 dgment.
 et all.
 hout loss, inc

ion, Buy in when profit can be had over all charges
 el, Buy if you can ship.
 n, Buy if you can ship at once.
 t, Keep on buying.
 ence, Keep on buying. How much have you
 bought?
 ge, Get refusal of — at lowest price until we
 can reply by telegraph.
 ft, If you cannot buy at limit, telegraph the
 best you can do.
 it, If you cannot get all to-day, complete order
 to-morrow.
 e, If you cannot get all to-day, complete order
 soon as possible.
 man, Buy — Order in force till countermanded.
 ted, Buy — Order in force to-day only.
 Can you buy?
 Can you buy buyer's option?
 Can you buy in store?
 Can you buy delivered from store?
 Can you buy afloat?
 Can you buy freely?
 Can you buy to arrive?
 Can you buy and lay down here at — ?
 Can you buy to arrive cheaper than for im-
 mediate delivery?
 Can you buy and hold on margin?
 Can you buy on board cars?
 At what price can you buy?
 At what price can you buy to arrive?
 If have not bought, await further orders.
 Is there any prospect of buying?
 Have you bought?
 How much have you bought?
 Quote expense of holding — in your City
 — days, including all charges.
 ling, Quote cost free on board including all charges.
 ted, Quote cost free on board not including Com-
 mission.
 ing, At what price can you buy — laid down
 in — ?
 d, At what price can you buy — laid down in
 — including commission and charges.
 date, Quote lowest price for — f. o. b. at —
 including commission and bank charges.
 nable, Quote lowest price for — f. o. b. cars at —
 able, Quote lowest price for — f. o. b. steamer at —
 ably, Quote lowest price for — f. o. b. vessel at —
 on, Stop buying.

Invented, Stop buying. How much have you bought
 Invoke, Stop buying until you receive our letter
 the ———.
 Involve, Stop buying until prices decline to —
 Inward, Order to buy is hereby countermanded
 Isthmus, Do not buy on our order by letter of
 Italian, Do not buy to arrive.
 Itch, Our order to buy is not in force.

ABOUT BUYING.

(COMMISSION MERCHANT.)

Jaunt, Have bought.
 Javelin, Have bought in store.
 Jestling, Have bought delivered from store.
 Jewel, Have bought afloat.
 Jewess, Have bought to arrive.
 Jockey, Have bought at your limit.
 Joke, Could not buy at limit. Have bought
 Jolly, Have bought for your account.
 Jostling, Have bought for account of — —
 Journey, Have bought and are shipping.
 Joyful, Have bought subject to inspection.
 Jubilant, Have bought on board cars.
 Judging, We are buying slowly.
 Judicial, Had bought before your dispatch reached
 Juggler, Had bought before receipt of your letter
 Junction, Can buy.
 Juniper, Can buy at ———
 Justice, Can buy buyer's option.
 Justly, Can buy in store.
 Juvenile, Can buy delivered from store.
 Labeled, Can buy afloat.
 Lace, Can buy to arrive.
 Ladder, Can buy freely.
 Lady, Can buy on board cars.
 Lamb, Can buy at price you name.
 Lamented, Can buy for future lower than for immediate
 delivery.
 Landlord, Can buy and hold here on margin.
 Landscape, Can buy free on board including all charges
 at ———
 Languld, Can buy free on board exclusive of charges
 at ———

ABOUT
 nished, H
 rn, W
 W
 d, W
 Ca
 Ca
 Ca
 de, W
 ing, W
 h, W
 ry, Th
 Th
 der, Mi
 l, We
 ss, Dif
 ve, Can
 an, Can
 Can
 e, Can
 g, Can
 r, Can
 e, Can
 y, Can
 Can
 Can
 n, Non
 Littl
 Have
 Shall
 Shall
 Name
 ca
 Is you
 Your

uch have you b
a receive our le

ces decline to —
y countermand
der by letter of

ot in force.

YING.

HANT.)

l from store.

mit.
Have bought
account.
nt of — —
hipping.
o inspection.
cars.

r dispatch reach
eipt of your lett

a store.

ame.
er than for imm

on margin.
including all c

exclusive of c

- ished. Have refusal until —
- ern. We are offered but cannot get refusal —
- We can get no refusal, but think could buy on a direct offer of —
- d. With order in hand think could buy at —
- al. Can buy and hold with margin of — dollars.
- Can buy for future delivery with margin of — dollars.
- Can buy — to cost not exceeding — laid down in —
- de. We are offered, subject to your immediate reply by telegraph.
- ing. We expect to buy at your limits.
- h. We expect to fill orders soon.
- ry. Think we can buy.
- l. Think we can buy at about —
- der. Might possibly buy at —
- l. We are trying to buy.
- ss. Difficult to buy much without advancing prices.
- ve. Cannot buy.
- an. Cannot buy at under —
- Cannot buy in store.
- Cannot buy afloat.
- Cannot buy buyer's option.
- Cannot buy to arrive.
- Cannot buy freely.
- Cannot buy at prices you name.
- Cannot buy for future lower than for immediate delivery.
- Cannot buy and hold here on margin.
- Cannot buy now. Is order open?
- Cannot buy except for cash.
- None offering in the market.
- Little trading in buyer's option. Difficult to buy.
- Have not bought.
- Shall we buy?
- Shall we buy more?
- Name highest price we may pay, and if we can buy cheaper will give you the benefit.
- Is your order to buy still in force?
- Your order to buy was received too late for action to-day. Shall we execute at next session of the market?

ABOUT SELLING.

(CUSTOMER.)

Libertine,	Sell immediately at best obtainable price.
Library,	Sell as soon as possible.
Lifelike,	Sell at about _____
Ligature,	Sell at not under _____
Lightning,	If you cannot sell at limit telegraph price you can get.
Likeness,	If not sold telegraph best price you can get.
Limbo,	Sell in store.
Limpid,	Sell delivered from store.
Linchpin,	Sell afloat.
Lincn,	Sell at _____ on board cars here, with _____ guaranteed, freight _____
Link,	Sell on board cars.
Liquid,	Sell on board cars there without expense us beyond your commission.
Listen,	Sell buyer's option.
Listless,	Sell seller's option.
Literal,	Sell at not under quotations in your ledger.
Litigate,	Sell at prices you name.
Lizard,	Sell at price you name or a shade less.
Loaf,	Sell to arrive.
Lobby,	Sell at a clear profit of _____
Locality,	Sell when a profit can be had over _____ expenses.
Locust,	Sell subject to inspection.
Lodging,	Sell at cost or even a little less.
Loftily,	Sell according to your judgment.
Logical,	Sell when you can without loss including _____ expenses.
Longitude,	Sell on present excitement at best price you can get.
Looped,	Sell part if you cannot sell all.
Lordly,	Sell for my (or our) account.
Lotion,	Sell for account of _____
Lounge,	Keep on selling.
Lovely,	Keep on selling. How much have you sold?
Lovesick,	If you cannot sell all to-day sell balance to-morrow or at next session.
Loyal,	Sell _____ Order in force to-day only.
Lubber,	Sell _____ Order in force until countermanded.
Lucifer,	If you have not sold await further orders.
Luckless,	Stop selling. How much have you sold?
Lugger,	Stop selling until receipt of our letter.
Lumber,	Stop selling until further orders.
Lunatic,	Our order to sell is hereby countermanded.

ing,
y,
nine,
kerel,
ly,
onna,
got,
naie,
netism, C

nify, C
nolia, C
en, C
enly, C
ng, C
ned, D

ly, D

taining, If

tain, At
r, At
dy, At
cle, At

ate, At

AB

(C

on, Hav
al, Hav
al, Hav
aman, Hav
nal, Hav
aline, Cou
nic, Hav
ve, Hav
r, Hav
ate, Hav
don, Hav
en, Hav
ess, Hav

TOMER.

LING.

obtainable price

limit telegraph

st price you can

e.

cars here, we

at ———

without expense

mission.

ions in your letter

for a shade less.

be had over

n.

tle less.

udgment.

out loss included

ent at best price

sell all.

ount.

much have you

-day sell balance

t session.

e to-day only.

until countermand

wait further order

ch have you so

t of our letter

er orders.

- ing, Do not sell on order in our letter of ———
- y, Do not sell to arrive.
- nine, Can you sell?
- kerel, Can you sell in store?
- ly, Can you sell delivered from store?
- onna, Can you sell afloat?
- got, Can you sell freely?
- naie, Can you sell to arrive?
- netism, Can you sell for future higher than for immediate delivery?
- nify, Can you sell at a profit over all charges?
- nolia, Can you sell without loss to us?
- en, Can you sell on board cars here?
- enly, Can you sell on board cars?
- ing, At what price can you sell on cars?
- hed, Don't sell until you have further advice from us.
- ly, Doing our best to sell, but cannot make progress.
- aining, If you cannot do better sell at the price you name.
- tain, At what price can you sell?
- r, At what price can you sell to arrive?
- dy, At what price can you sell in store?
- cle, At what price can you sell delivered from store?
- ate, At what price can you sell afloat?

ABOUT SELLING.

(COMMISSION MERCHANT.)

- on, Have sold.
- al, Have sold in store.
- e, Have sold delivered from store.
- sman, Have sold afloat.
- al, Have sold at your limit.
- aline, Could not sell at limit. Have sold at ———
- ic, Have sold to arrive.
- ve, Have sold for your account.
- r, Have sold for account of ———
- cate, Have sold seller's option.
- don, Have sold buyer's option.
- n, Have sold subject to inspection.
- ess, Have sold subject to your approval.

Meadow,	Have sold on board cars there —, we guaranteed, freight —
Measles,	We are selling slowly.
Mechanic,	Had sold before receipt of your telegram
Medallion,	Had sold before receipt of your letter of
Medical,	Can sell.
Meditate,	Can sell in store.
Mellow,	Can sell delivered from store.
Membrane,	Can sell afloat.
Menace,	Can sell to arrive.
Mental,	Can sell buyer's option.
Mermaid,	Can sell seller's option.
Merry,	Can sell at —
Metallic,	Can sell for future higher than for immediate delivery.
Methodist,	Can sell for future delivery with margin — dollars.
Midst,	We are bid —, subject to your immediate reply by telegraph.
Midwife,	Cannot sell.
Mighty,	Cannot sell in store.
Milch,	Cannot sell to arrive.
Mildewed,	Cannot sell freely.
Mildness,	Cannot sell at price you name.
Military,	Cannot sell for future higher than for immediate delivery.
Milky,	Cannot sell at your limit.
Mimic,	Cannot sell at over —
Mineral,	Cannot sell now. Is order open?
Ministry,	Cannot sell for cash.
Miracle,	Cannot sell except by sample. Please liberal sample at once by express.
Minutely,	Cannot sell except at a loss.
Mirthful,	The best bid is —
Misdeed,	Difficult to sell much, except at a decline
Miserly,	Have not sold.
Mislay,	Shall we sell?
Misprint,	Shall we sell more?
Missive,	Expect to reach your limit soon.
Missionary,	Will probably be able to sell.
Mistrust,	We are trying to sell.
Misuse,	Think we can sell.
Mobbed,	Think we can sell at about —
Model,	Might possibly sell at —
Modern,	Name lowest price at which we may sell and if we can get more will give the benefit.
Modesty,	How much shall we sell?
Mohair,	At what price may we sell?
Molest,	For what delivery here may we sell?

ent,
 arch,
 key,
 stone,
 stony,
 trous,
 ment,
 age,
 h,
 d,
 dly,
 e,
 Na
 Car
 Thi
 Wil
 out F
 e,
 e,
 e,
 e,
 Hold
 Hold
 Hold
 Hold
 Hold
 Hold
 Hold
 ss,
 How

s there —, we
at —

of your telegra
of your letter of

store.

er than for imme

very with mar

t to your imme

a.

a name.

higher than for

it.

der open?

sample. Please

once by expres

loss.

cept at a decli

mit soon.

o sell.

out —

which we m

t more will g

ll?

sell?

e may we sell?

ent, At what price, how much, and for what de-
livery here may we sell?

arch, Is your order still in force?
key, Order received too late for action to-day.

stone, Shall we execute it at next session?
Please give limit of price and quantity, and
state time of shipment or of delivery
here. Without this information we
can do nothing.

tony, At what price may we sell including costs
and freight only —?

trous, At what price may we sell including all
charges delivered at —?

ment, Can sell car No. —? Wire bank to deliver
us Bill Lading.

age, Have sold car No. —. Instruct bank to
deliver us Bill Lading on receipt of —
acceptance at — days equal cash.

h, Can we sell mixed cars of —?
d, Prices named represent cost and freight only.

ddy, Quote lowest for — meal delivered at —
draft 15 days sight Bill Lading attached,
including all charges.

e, Name lowest price for — delivered at —
including all charges, draft 15 days
from date of shipment, Bill Lading at-
tached.

Can sell subject to your immediate reply by
telegraph.

This sale does not indicate the general mar-
ket, but is merely a chance sale.

Will the price you name bring us out whole.

About Holding and Storing.

Hold our —

Hold our — afloat.

Hold our — afloat a few days.

Hold our — afloat until expiration of lay
days, and then store if limit not ob-
tainable.

Hold our — afloat until further orders.

Hold our — afloat. How much per day is
the demurrage?

Hold our — afloat under the "Lay Clause."

Hold our — afloat if you can make arrange-
ments at "Lay Clause" rates, otherwise
store the —

Hold our — on cars until further orders.

How much per — is the demurrage?

Mustability,	We cannot arrange with Railway to — without demurrage.
Mutable,	Rate of demurrage is — per —
Mutation,	Railway demands demurrage.
Mutely,	Railway will not waive demurrage of — No. —
Muteness,	Try and get Railway to waive demurrage.
Meditate,	Try and get Railway to refund demurrage.
Mutineer,	Will try and get Railway to waive demurrage.
Mutinous,	Store our —
Mutton,	Store our — at once.
Muzzle,	Store our — before demurrage accrued.
Mystery,	Do not store our —
Nabob,	How much per — (including storage and insurance, but not interest nor commission) will it cost to store and our — for 30 days?
Nankeen,	Do., do., 60 days?
Narrow,	Do., do., 90 days?
Nasal,	Quote rate of storage on —
Natural,	Shall we sell or hold?
Navigate,	Shall we sell or store?
Neck,	Shall we hold afloat under regular demurrage, or store?
Nectar,	Shall we hold afloat under "Lay Clause" store?
Negative,	Have stored your —
Neglectful,	Have stored your — but could not — out before demurrage accrued.
Negro,	Had stored your — before receipt of — gram.
Neighbor,	We cannot arrange with — to hold — at less than regular demurrage.
Nephew,	Think we can arrange with — to hold — at "Lay Clause" rates.
Nervously,	We cannot hold — afloat. Carrier — his boat. Must sell or store.
Nestling,	Boat — is leaking. Must sell or store — once.
Neutral,	— must be sold or stored, the R. — having given notice that it will — held — later than —
Neutrally,	Rate of storage is —
Nibbling,	It will cost (including storage and insurance but not interest nor commission) to store and carry your — 30 days — per —
N. card,	Do., do., 60 days — per —
Nightcap,	Do., do., 90 days — per —

h Railway to
rrage.
— per —
rrage.
e demurrage on

waive demurrage
refund demurrage
ay to waive de

demurrage accrued

(including stoppage
not interest nor
st to store and
s?

der regular de

der "Lay Claus

out could not
age accrued.
fore receipt of

th — to hold
gular demurrage
with — to hold
e" rates.

loat. Carrier
ll or store.
ust sell or st

ored, the R.
e that it will
an —

prage and insur
nor commissi
our — 30 da

er —
er —

Out Arrival and Condition of Goods, Rejections, &c.

- arrived. Please instruct us.
- arrived. Please instruct. Should quote value about.
- commencing to arrive. Please instruct.
- arrived. Please instruct. The — inspects —
- arrived. — in good condition. Please instruct.
- arrived. — damp.
- arrived. — damp and likely to heat.
- arrived. — warm in spots.
- arrived. — warm throughout.
- arrived. — blue-eyed.
- arrived. — musty.
- arrived. — blue-eyed and musty.
- arrived. — hot.
- arrived. — very hot.
- in store is in good condition.
- in store is in about same condition as previously reported.
- in store is getting out of condition. Shall have it handled or sell it?
- in store is in bad condition. Shall we have it handled or sell it?
- in store is in very bad condition. Shall we have it handled or sell it?
- Would advise selling at once.
- Think it would pay to have it handled.
- Think it would pay to have it dried.
- Think it would pay to have it kiln-dried.
- is rejected as not up to sample.
- is rejected on account of condition.
- is rejected as not up to grade.
- is rejected because of our inability to deliver at once.
- is rejected as not up to sample. Buyer proposes to take the — at a deduction to be settled by arbitration. Will this be satisfactory?
- is rejected. Buyer will take the — if satisfactory to you, at a deduction of —
- is rejected for cause. Have arbitrated it and rejection is sustained. See letter. Shall we buy here to cover your sale or will you ship more?

Outdo,	Your ——— will not arrive in time to fill sale. Shall we buy here to cover our sale by buying there at not over our sale by buying there at best you can.
Outgrow,	Cover our sale by buying there at not over our sale by buying there at best you can.
Outlay,	Cover our sale by buying there at best you can.
Outpost,	Sell the ——— which has been rejected
Outside,	Store the ——— which has been rejected
Outspread,	Hold afloat the ——— which has been rejected
Outward,	Do not buy to cover. Will ship more.
Oven,	—— has arrived. Consignee refuses to accept on account of not being equal sample. Please instruct.
Overcast,	—— has arrived. Consignee refuses to accept without Bill Lading is given up
Overhead,	—— arrived in very bad order.
Overjoy,	—— arrived in very good order.
Overlap,	Any difference to be arranged. Ship not to be rejected on account of discrepancies.
Overlay,	When is ——— expected to arrive.
Oversee,	Will we telegraph the arrival of the ———
Overt,	Telegraph the arrival of the ———
Overthrow,	Will telegraph the arrival of the ———
Overwhelm,	—— Daily expected to arrive.
Overwise,	Subject to arrival on or before ———
Ovicular,	Subject to inspection on arrival.
Oviform,	When did ——— arrive?
Oviparous,	Arrived on the ———
Oxyd,	Cannot ship subject to inspection on arrival but will hold ourselves responsible
Oxydize,	—— has not arrived.
Oxygen,	—— has not arrived. Can you give information of its whereabouts?
Ozone,	—— has arrived.

MISCELLANEOUS.

Painting,	We advance limits ———
Paladin,	We reduce limits ———
Palatial,	Order open until countermanded.
Palaver,	Order open to-day only.
Palisade,	Order open to-morrow.
Palmy,	Order open this week.
Palpitate,	Order open ——— days.
Paltry,	All previous orders are hereby countermanded.

rive in time to fl
uy here to cover
ng there at not o
ng there at best
as been rejected
has been rejecte
which has been rej
Will ship more.
signee refuses
of not being equ
instruct.
signee refuses to a
ing is given up
d order.
od order.
rranged. Ship
l on account of
ted to arrive.
arrival of the
of the
ival of the
to arrive.
r before
n arrival.
ve?
inspection on ar
ives responsible
Can you give
s whereabouts
EOUS.
—
—
—
ermanded.
—
—
hereby counte

ke, This is same order that is contained in our
er, letter of _____
Please give positive instructions. We prefer
not to execute discretionary orders.
Have you executed our order?
We have executed your order.
Is your order still open?
Whatever you do will be satisfactory.
Act according to your judgment in the mat-
ter.
led, We prefer not to act on our judgment.
n, Do not act on order in our letter of _____
age, We confirm what has been done.
ment, On every advance of _____
r, On every decline of _____
p, If market advances to _____
ing, If market declines to _____
e, If you do not hear from us to the contrary.
At what difference can you change our _____
to _____
er, Can change your _____ to _____ at _____
cents in your favor.
re, Can change your _____ to _____ at _____
cents against you.
nger, Is it satisfactory?
ely, It is satisfactory.
ord, It is not satisfactory.
ae, Will follow instructions.
age, Have done as you requested.
ity, Cannot make the suggested arrangements.
In accordance with your instructions.
The best that could be done.
Have we authority to _____
Offer is under consideration.
Particulars by mail.
Documents go forward by mail.
Documents went forward by mail on _____
Please send account sales.
We sent account sales _____
We send account sales to-day.
We will send account sales _____
Subject to your immediate reply by telegraph
Subject to inspection.
Send full explanation.
No session of the board to-morrow.
Will leave here _____
I go to-day to _____
I go to-morrow to _____
Direct letters to _____ care of _____
Just arrived home from _____

Penitentially,	Will leave here for — Wire me the fore — p. m.	ve, otible
Penitentiary,	Do., do., a. m.	otibly
Penknife,	Just arrived home from — Will write fully by first mail.	tion, otive, ativity,
Penman,	Will leave here — for —	
Penmanship,	Will you meet me at — on arrival of	
Pennant,	Meet me at — on arrival of —	
Penned,	In all cases mail us ear No.'s immediately after shipping goods,	ance, dent.
Penniless,	Have you received our (or my) letter the —	se, ate, ation,
Pennon,	Ascertain immediately, and telegraph of — f. o. b.	
Penny,	Accept offer.	
Pennyweight,	Arrange on the best terms you can.	ision, H
Pensile,	Be as quick as possible.	ion, H
Pension,	Cannot give you a positive answer but	
Pensionary,	Come home as soon as you can.	ptorily, N
Pensioner,	Come home at once.	ptory, N
Pensive,	Come here as soon as possible.	
Pensively,	Decline the offer.	ate, V
Pentachord,	Decline to have anything further with —	ne. e, H
Pentagon,	Do not come home until —	eter, A
Pentameva,	Do nothing in the matter until you get instructions.	ical, A
Pentameter,	Do nothing in the matter until you get	arase, A
Pentangular,	Do the best you can.	
Pentateuch,	Expect to hear from —	able, A
Pentacost,	Expenses to be paid by you.	altic, W
Penthouse,	Expenses to be paid by us.	y, W
Pentroof,	Have submitted your offer and will promptly when we get reply,	ment, H
Penult,	Not that we are aware of.	ssive, D
Penumbia,	Not much inquiry for —	ious, D
Penuvious,	— Not to be obtained here.	tion, T
Penuvously,	— Refuses to acknowledge our authority	ndicularT
Penury,	— Refuses to acknowledge your authority	ndieu-W
Peon,	Send to us by first mail sample of —	
Peony,	Send to us by first mail —	rate, W
Pepper,	Send to us by express —	ration, T
Peppermint,	There is a great scarcity of —	erator, H
Peppery,	Too late.	ual, D
Peptic.	Try to do business with —	ually, D
Peptics,	We give you authority to act for us	uate, D
Perambulate.	When do you return to —	uity, D
Perambulator,	Your request will be attended to im- tely.	ation D
Perceivable,	Do you accept offer.	

— Wire me the
 from — Will write
 mail.
 for —
 t — on arrival of
 arrival of —
 car No.'s immediately
 goods,
 our (or my) letter
 ely, and telegraph
 terms you can
 ble.
 positive answer by
 as you can.
 as possible.
 anything further
 until —
 matter until you
 matter until you
 l by you.
 d by us.
 ur offer and will
 en we get reply,
 are of.
 for —
 d here.
 wledge our auth
 wledge your auth
 mail sample of —
 mail —
 ss —
 rcity of —
 with —
 rity to act for us
 n to —
 e attended to in

ve,
 ptible
 ptibly
 otion,
 ptive,
 otivity,
 nce,
 dent.
 se,
 ate,
 ation,
 sion,
 on,
 ptorily.
 ptory,
 ate,
 ne.
 e,
 eter,
 ical,
 arse,
 able,
 altic,
 y,
 nent,
 ssive,
 sious,
 ation,
 ndicular
 ndicu-
 rate,
 ration,
 rator,
 ual,
 ually,
 uate,
 uity,
 ation

Do you accept offer at terms proposed.
 Have given instructions as requested.
 Will I order from —
 Have you instructed —
 Will give — f. o. b., at —
 Will give — f. o. b., at — including your
 commission and Bank charges.
 One car 50 bbls. each.
 We wrote you on the —
 My commission included.
 Free of commission at this end.
 Free of commission at your end.
 Cannot trace cars No. — As soon as can
 find locality will wire you full infor-
 mation.
 Have confirmed order.
 Best that could be done. Impossible to do
 better.
 Name lowest prices f. o. b. at — for —
 Name lowest prices delivered at — for —
 including all charges.
 Will sell your account on arrival.
 Can you recommend us an agent in —
 Free in store.
 Are we authorized to —
 At what rate can you charter a sailing ves-
 sel of about — tons. D. W.
 At what rate can you charter a steamer
 of about — tons. D. W.
 At what rate can you charter
 Without prejudice to any further claim.
 Without prejudice to our (or my) claim
 in full.
 Have you attended to last orders?
 Delay caused by —
 Delay could not be avoided.
 There must be no delay.
 There will be no delay.
 What caused delay?
 What is the rate of duty on —
 The duty is as follows.
 Has the duty been paid?
 Duty has not been paid.
 Duty paid by you.
 Duty paid by us (or me.)
 Duty paid.
 Duty has been paid.

Time of Delivery or Shipm

Perplex,	" Fresh."	
Persecute,	" Regular."	
Personal,	To arrive to-day.	
Pestilence,	To be shipped to-day.	
Petrify,	To arrive to-morrow.	
Petticoat,	To be shipped to-morrow.	
Phantom,	To arrive this week.	
Phial,	To be shipped this week.	
Photograph,	To arrive next week.	
Pickaxe,	To be shipped next week.	
Picketing,	To arrive this month.	
Picnic,	To be shipped this month.	
Pigment,	To arrive within 5 days.	
Pilaster,	To be shipped within 5 days.	
Pilgrim,	To arrive within a week.	
Pillow,	To be shipped within a week,	
Pilot,	To arrive within 10 days.	
Pimple,	To be shipped within 10 days.	
Pistol,	To arrive within 15 days.	
Pitfall,	To be shipped within 15 days.	
Pitifully,	To arrive within 20 days.	
Pitman,	To be shipped within 20 days.	
Placard,	To arrive within 30 days.	
Plainly,	To be shipped within 30 days.	
Plaintive,	To arrive first week in _____	
Plantation,	To be shipped first week in _____	
Plate,	To arrive last week in _____	
Platform,	To be shipped last week in _____	
Platoon,	To arrive first ten days in _____	
Play,	To be shipped ten days in _____	
Playfully,	To arrive last ten days in _____	
Plaything,	To be shipped last ten days in _____	
Pleader,	To arrive first twenty days in _____	
Plebeian,	To be shipped first twenty days in _____	
Pledging,	To arrive last twenty days in _____	
Pliable,	To be shipped last twenty days in _____	
Pluck,	To arrive January.	
Plucking,	" " first half January.	
Plumb,	" " last half January.	
Plumply,	" " January and February.	
Plunge,	" " February.	
Plural,	" " first half February.	
Polar,	" " last half February.	
Pollshed,	" " February and March.	
Polite,	" " March.	
Politeness,	" " first half March.	
Polka,	" " last half March.	
Polluting,	" " March and April.	

r Shipm

y.
y.
rrow.
week.
week.
n.
month.
ays.
n 5 days.
week.
n a week,
days.
n 10 days.
days.
n 15 days.
days.
n 20 days.
days.
n 30 days.
in _____
week in _____
in _____
week in _____
ays in _____
ays in _____
ays in _____
n days in _____
y days in _____
wenty days in _____
y days in _____
wenty days in _____
January.
January.
nd February.
February.
February.
nd March.
March.
March.
April.

ABOUT BUYING.

de,	“	“	April.
r,	“	“	first half April.
e,	“	“	last half April.
ate,	“	“	April and May.
o,	“	“	May.
it,	“	“	first half May.
s,	“	“	last half May.
ne,	“	“	May and June.
y,	“	“	June.
y,	“	“	first half June.
red,	“	“	last half June.
cal,	“	“	June and July.
ng,	“	“	July.
er,	“	“	first half July.
otine,	“	“	last half July.
ted,	“	“	July and August.
ed,	“	“	August.
e,	“	“	first half August.
t,	“	“	last half August.
ting,	“	“	August and September.
ent.	“	“	September.
aption	“	“	first half September.
ded,	“	“	last half September.
sc,	“	“	September and October.
t,	“	“	October.
ing,	“	“	first half October.
s,	“	“	last half October.
on,	“	“	October and November.
e,	“	“	November.
g,	“	“	first half November.
n,	“	“	last half November.
ming,	“	“	November and December.
l,	“	“	December.
g,	“	“	first half December.
ng,	“	“	last half December.
on,	“	“	December and January.
onal,	“	“	this year.
onally			To be shipped at once sail and canal, via —
			To be shipped at once steam and canal,
			via _____
			To be shipped at once sail and rail, via _____
			To be shipped at once steam and rail,
			via _____
			To be shipped at once all rail.
			To be shipped at opening of canal naviga-
			tion from _____
			Free on board in spring.
			Buyer's option.
			To be shipped at once by sail.
			To be shipped at once by steamer.

ABOUT SHIPPING.

Proficiency,	Will ship as soon as can secure vessel.
Profile,	Ship immediately — Charlottetown Pictou Landing, 100 Bbls. — @ \$ — Draw at 10 days from date of ship- bill lading attached.
Profitable,	Do., do., 15 days.
Profitably,	Do., do., 20 days.
Profiting,	Ship immediately — Charlottetown du Chene — Bbls. — @ \$ — at 10 days from date of shipmen- lading attached.
Profitless,	Do., do., 15 days.
Profligacy,	Do., do., 20 days.
Profligate,	Ship immediately — Charlottetown \$ — Draw at — days from shipment, bill lading given up ceptance.
Profound,	Do. do., do., Summerside.
Profoundly,	Do., do., do., Halifax.
Profundity,	Do., do., do., St. John.
Profuse,	Do., do., do., Moncton.
Profusely,	Do., do., do., Sackville.
Profuseness,	Do., do., do., Truro.
Profusion,	Do., do., do., Pictou.
Progenitor,	Ship immediately — Summerside, — @ \$ — Draw at 10 days from shipment, bill lading attached.
Progeniture,	Do., do., 15 days.
Progeny,	Do., do., 20 days.
Prognostic,	Ship immediately to — @ \$ — us here at — days from date ment, bill lading attached. C No.'s immediately.
Programme,	Do., do., do., bill lading given up on ance.
Progression,	Please quote lowest for — delivered free of all charges. Draw at — bill lading attached.
Progressive,	Do., do., bill lading given up on acc
Prohibit.	Ship to our order.
Project,	Will ship to your order.
Projection,	Do not ship unless you can do so named.
Prolific,	Do not ship unless you can do so named. Consignees will not a
Promenade,	Can you ship immediately ?
Prominent,	Can you ship by —
Promote,	Can you ship via —

PPING.

an secure vessel.
— Charlottetown
100 Bbls. — @ \$
from date of ship
hed.

Charlottetown
bbls. — @ \$ —
date of shipme

— Charlottetown
— days from
ading given up

side.

.
n.
e.

Summerside, —
at 10 days from
ading attached.

— @ \$ —
ays from date
ng attached. C

ely.
ng given up on

for — delivere
ges. Draw at —
ched.

given up on acc

er.
ou can do so a

ou can do so a
gnees will not a
ediately ?

otion,
oun,
ct,
rtion,
ect,
cute,
er,
ate,

ating,
ct,
cted,
cting,

ence,
ce,

ng,
at,
h,
y,
an,
n,
g,
t,

in,
at,
ed,
ment,

ve,
ed,

ly,

e,

- Can you ship by rail, in bulk?
- Can you ship before freights advance?
- Can you ship less than a full cargo?
- Can you get a time freight contract?
- Can you get a through freight contract?
- Can you ship before close of navigation?
- Can you ship by steam canal boats?
- Have you shipped?
- Have you shipped? If not, when will you ship?
- When did you ship?
- How much have you shipped?
- By what route did you ship?
- What is the difference between steam and sail freights?
- At what rate can you engage freight to—
- Quote freight by sail to—
- Quote freight by steam to—
- Quote freight by sail and rail to—
- Quote freight by steam and rail to—
- Quote freight all rail to—
- Quote canal freight.
- Quote freight via—
- Quote freight by—
- What is the rate of freight?
- Ship immediately.
- Ship as soon as possible.
- Ship by—
- Ship via—
- Ship by sail.
- Ship by steam.
- Ship by steam and rail.
- Ship by steam and rail.
- Ship all rail.
- Ship by the quickest route.
- Ship by the cheapest route.
- Ship by the route you think best.
- Ship if good prospect of shipment getting through promptly.
- Ship before close of navigation.
- Ship, rather than store.
- Ship as before.
- Ship, getting time freight contract if possible.
- Ship, getting through freight contract if possible.
- Complete cargo and ship at once.
- Hurry forward shipments.
- Have written you shipping instructions.
- Will send shipping instructions by mail.

Quartered,	Ship to Halifax, care of —
Quartz,	Ship to — care of —
Queenly,	If you have not shipped hold for further instructions.
Quelled,	Hold for lower freights.
Quenching,	Hold for shipment on opening of navigation.
Questioned,	Ship by fast canal boats.
Quince,	Ship by steam canal boats if possible.
Quintal,	Ship "To be graded in New York."
Quiver,	Ship "To be delivered afloat in New York but not graded."
Rabbit,	Stop shipping.
Ragged,	Have shipped.
Rainbow,	Have shipped by —
Ramble,	Have shipped via —
Rampart,	Have shipped by sail.
Random,	Have shipped by steam.
Ransack,	Have shipped by sail and canal.
Ransomed,	Have shipped by steam and canal.
Rapid,	Have shipped by sail and rail.
Rapture,	Have shipped by steam and rail.
Rascal,	Have shipped by all rail.
Rashly,	Have shipped getting time freight contract.
Ratio,	Have shipped getting through freight contract.
Ravine,	Shipped on the —
Ravished,	Shipped yesterday.
Read,	Shipping to-day.
Reading,	Will ship immediately.
Realm,	Will ship as soon as possible.
Rebellion,	Will ship as directed.
Rebounded,	Expect to ship to-morrow.
Rebuke,	Expect to ship in a few days.
Reckless,	Expect to ship this week.
Redeem,	Have engaged freight.
Redeeming,	Have been delayed in shipping by unfavorable weather.
Refine,	Have been delayed in shipping by securing cars.
Refinement,	Will ship as soon as can engage freight.
Refrain,	Will ship as soon as can secure cars.
Refreshed,	This is the nearest sized vessel we get.
Refuge,	Please give shipping instructions.
Register,	Can ship immediately.
Regretted,	Can ship by —
Rehearse,	Can ship via —
Rehearsing,	Can ship before freights advance.
Relax,	Can ship less than a full cargo.

- Can ship with time freight contract.
- Can get a through freight contract.
- Can ship before navigation closes.
- Can ship by steam at same rate as by rail.
- The difference between steam and sail freights is —
- Can charter to arrive at —
- Can engage freight at —
- Can engage freight through, (weights guaranteed from here,) to — at —
- Cannot ship immediately.
- Cannot ship at once but will as soon as possible.
- Cannot ship by —
- Cannot ship via —
- Cannot ship before freights advance.
- Cannot ship less than full cargo.
- Cannot ship before navigation closes.
- Cannot get a time freight contract.
- Cannot get a through freight contract.
- Weights guaranteed.
- Weights not guaranteed.
- Time guaranteed.
- The prospect for shipments getting through promptly is favorable,
- The prospect for shipments getting through promptly is unfavorable.
- No suitable vessels now offering.
- Very few vessels offering.
- No grain vessel here unengaged.
- Vessels scarce and firmly held.
- Vessels are more plenty.
- Vessels are plenty.
- A large fleet expected with the next change of wind.

FREIGHTS.

- What is the difference between freights via Boston and Sarnia ?
- The freight via Sarnia is —
- The freight via Boston is —
- What is the difference in freights via Boston and all rail ?
- The freight all rail is —
- What is the difference between rail and sail freights to —
- The difference between rail and sail freights is —

- Resignedly, Do you expect any advance in freight soon. If so, when ?
- Resigning, Do you expect any decline in freight? If so, when ?
- Resilience, Freights advance on the —
- Resilient, Freights decline on the —
- Resilition, What is through freight from —
- Resin, See that freight is secured, "and loaded properly indorsed," is paid before delivery.
- Resinous, Stop delivery of — until freight is paid.
- Resist Will not accept payment of freight less than in —
- Resistance, Flag Station—freight must be prepaid.
- Resistant, Flag Station—prepaid freight —
- Resisted, At what rate can you engage freight?
- Resistibility, Can engage freight to — at —
- Resistible, Grain freight is — per 100 lbs.
- Resisting, What is Grain freights per 100 lbs ?
- Resistive, What is freight per 100 lbs. on —
- Resistless, What is freight per 100 lbs. on — to —
- Resoluble, Freight per 100 lbs. on — is —
- Resolute, Freight per 100 lbs. is —
- Resolutely, Quote best obtainable freight from — for —
- Resolve, Freight by steam to — is —
- Resound, Freight by sail to — is —
- Resounding, Freight by sail and rail is —
- Respectful, Freight by steam and rail is —
- Responded, Freight by rail is —
- Restrain, Canal freight is —
- Restraining, Freights tending upward.
- Restricted, Freights steady and firm.
- Restriction, Freights unchanged.
- Resulted, Freights dull.
- Retire, Freights tending downward.
- Retreat, Prospect of freights advancing soon.
- Retrench, Expect higher freights next week.
- Return, Lake freights have advanced.
- Reveal, Rail freights have advanced.
- Revealing, Canal freights have advanced.
- Revelry, Prospect of freights declining soon.
- Revengeing, We expect a decline in freights next week.
- Reville, Lake freights have declined.
- Revisal, Rail freights have declined.
- Revoking, Canal freights have declined.

NKI
BIL

ance,
e,
A
A
C
ile,
C
aling,
C
alous,
C
C
g,
C
ng,
C
ous,
C
ful,
ity,
ous,
le,
et,
ns,
ess,
e,
lity,
e,
ry,
et,
er,
ing,
er,
ry,
t,
t,
t,
ion,
Ho,
sh,
Ple

**BANKING, FINANCIAL and
BILLS of LADING.**

advance in fr
en ?
eline in freights
the —
he —
ght from —
eured, "and
indorsed," is p
ery.
until freight is
ment of freight
must be pre-p
l freight —
engage freight
— at —
er 100 lbs.
ts per 100 lbs ?
0 lbs. on —
0 lbs. on — to
— is —
e freight from
— is —
is —
il is —
rail is —
ard.
rm.
nward.
dvancing soon
s next week.
vanced.
vanced.
vanced.
eclining soon
n freights next
lined.
ined.
lined.
ion,
ery,
sh,

ance,
e,
ile,
aling.
ulous,
g.
ng.
ous,
ful,
ity,
ous,
le,
et,
us,
ess,
e,
lity.
e,
ry.
et,
er,
ing,
er,
ery,
t,
t,
t,
ion,
ery,
sh,

A remittance will do if it reaches us—
Apply for funds to —
Apply for documents to —
Convert proceeds into Gold and deposit
with —
Convert proceeds into Gold at not over
— and deposit with —
Can you wait for a remittance.
Cannot make advance on grain shipped
by lake after —
Cannot make advances on grain shipped
from Buffalo by canal after —
Cannot make advances on grain shipped
from Oswego by canal after —
Credit me (or us) with \$2.50.
" " " " 5.00.
" " " " 7.50.
" " " " 10.00.
" " " " 12.50.
" " " " 15.00.
" " " " 17.50.
" " " " 20.00.
" " " " 25.00.
" " " " 50.00.
" " " " 100.00.
" " " " 200.00.
" " " " 500.00.
Deposit proceeds —
Financial instructions go forward by mail.
Free of all Bank charges.
Free of all Commission and Bank charges.
Have you remitted.
Have remitted.
Have remitted currency.
Have remitted by mail.
Have remitted by express.
Have deposited margins with —
Have deposited proceeds and sent letter of
advice on the —
Have deposited proceeds, having convert-
ed them into gold at —
How shall we remit.
How have you remitted.
Please remit currency.

Romance,	Please remit by express in Canadian currency \$ —
Romanism,	Please remit by express in Currency
Romantic,	Please send Post Office Money Order \$ —
Roominess,	Please make telegraphic transfer of
Roomy,	Remit proceeds.
Ropiness,	Season too far advanced. Cannot make advances on grain stock otherwise than by rail.
Rosary,	Will accept in the dollar a dividend
Roseal,	Will not accept in the dollar a dividend of —
Roseate,	Will remit immediately.
Rosin,	Will remit soon.
Rosiness,	Will remit currency.
Rosiny,	Will remit necessary funds.
Rostral,	Will telegraph if we want more money.
Rostrum,	Will you accept in the dollar a dividend of —
Rotary,	We hold, subject to your order, \$ —
Rotate,	We deposited proceeds and sent letter of advice on the —
Rotund,	You can credit us —
Rogue,	You can debit us —
Roughly,	Advise the amount at credit of —
Roughness,	Advise the amount to our credit.
Roulette,	Balance to the credit of — is —
Rounce,	Balance to your credit is —
Roundish,	Cannot arrange credit.
Roundly,	Cannot open a Bank credit.
Routine,	Confirm Banker's credit.
Rowel,	Credits are arranged as you wish.
Royalist,	Former credit renewed.
Ructation,	Forward me (or us) letter of credit.
Ruddiness,	Have opened a Bank credit for £ —
Rudely,	" " " " " " \$ —
Rudeness,	How much do you require Bank credit
Rudiment.	In case of need apply to —
Rueful,	Open a Bank credit in favor of —
Ruffle,	" " " " " " " " " " " "
Rugged,	Require a Bank credit for £ —
Ruinous,	" " " " " " \$ —
Rumble,	Telegraph me (or us) a Bank credit
Rumbling,	" " " " " " " " " " " "
Ruminant,	" " " " " " " " " " " "
Ruminate.	Telegraph a credit of —
Rumination,	You must not fail to arrange Bank credit at once.
Rumor,	You must not fail to arrange credit

ress in Canadian
 ress in Currency
 ffice Money Ord
 phic transfer of
 vanced. Canno
 es on grain sh
 n by rail.
 ollar a dividend
 the dollar a di
 tely.
 r.
 y funds.
 e want more ma
 the dollar a di
 your order, \$
 ceeds and sent l
 —
 —
 —
 at credit of —
 to our credit.
 it of — is —
 dit is —
 dit.
 k credit.
 credit.
 d as you wish.
 wed.
 letter of credit.
 k credit for £ —
 " " \$ —
 require Bank cre
 ly to —
 in favor of —
 " " —
 dit for £ —
 " " \$ —
 s) a Bank credit
 " " —
 of —
 o arrange Bank
 arrange credit

A mistake has been made in Bills of Lad-
 ing.
 Address Bill of Lading.
 Advise despatch of Bill of Lading.
 All the Bills of Lading posted.
 As per Bill of Lading.
 Be careful you have the proper Bill of Lad-
 ing before delivering.
 Bill of Lading attached.
 Bill of Lading attached, and to be given
 up on acceptance of draft.
 Bill of Lading dated.
 Bills of Lading.
 Bills of Lading are complete.
 Bills of Lading are not complete.
 Bills of Lading are already forwarded.
 Bills of Lading are already forwarded to—
 Bills of Lading have been fraudtently
 signed. Be careful to whom you de-
 liver.
 Bills of Lading not sent.
 Bills of Lading not wanted.
 Bills of Lading in the hands of —
 Bills of Lading to be made out to our (or
 my) own order.
 Bills of Lading to be made out to order.
 Bills of Lading to be made out to —
 Bills of Lading not endorsed. Send du-
 plicate properly endorsed.
 Bills of Lading wanted.
 " " to be signed without preju-
 dice.
 Can forward Bill of Lading.
 Cannot forward Bill of Lading.
 Date of Bill of Lading is —
 Fill in Bill of Lading the following.
 Have you received Bill of Lading.
 Have received Bill of Lading.
 Have not received Bill of Lading.
 How many Bills of Lading are there.
 In accordance with Bills of Lading.
 In exchange for Bills of Lading.
 Mark Captain's copy "not negotiable."
 Negotiate Bill of Lading.
 Not in accordance with agreement of sale.
 Bill of Lading must be held for pay-
 ment.
 Obtain advance on Bills of Lading.
 Produce Bill of Lading.
 Send Bill of Lading immediately without fail.

Salute,	Unable to obtain any advance on Bill of Lading.	amper,
Salvable,	We (or I) rely on you sending Bill of Lading.	andal,
Salvation,	Who holds Bill of Lading.	antly,
Salver,	What date is Bill of Lading.	antiness,
Sanable,	Will not give up Bill of Lading.	antle,
Sanatory,	Will not give up Bill of Lading until payment of draft.	antling,
Sanctify,	Advise when draft is due.	arlet,
Sanction,	Advise when draft is paid.	avenger,
Sanctuary,	At what rate may we draw on you at sight against _____	anical,
Sanctum,	Authorize us by mail to draw on you for \$ _____	optical,
Sandal,	Authorize us by wire to draw on you for \$ _____	chedule,
Sandiness,	Bill of Lading attached and held for payment of draft.	bism.
Sandstone,	Can make advance with _____ margin	ismatic,
Sandwich,	_____ per cent margin required on property bought, sold, or advanced on. Margin to be kept good.	olastic,
Sanguine,	Can we draw on you for \$ _____ at _____ days sight.	olist,
Sanitary,	Can we draw on you for \$ _____ at _____ date.	olding,
Sapient,	Can we draw on _____	orner,
Sapling,	Can we draw on you on account of _____	oundrel,
Sapphire,	Canadian Bank of Commerce.	urger,
Sarcastic,	Dominion Bank.	nable,
Sardonic,	Cannot act without margin in _____	amble,
Satanic,	Cannot draw time drafts against _____	ambling,
Satiate,	Cannot draw as requested.	awl,
Satinet,	Cannot negotiate the paper.	een,
Saturn,	Cannot wait for remittance; must draw	ibble,
Saturate,	Can you negotiate time drafts.	iptural,
Satyr,	Do not draw.	ofula,
Saucily,	Do not draw sight.	uple,
Saunter,	Draft on demand.	utiny,
Sausage,	Draft at sight.	ffle,
Savageness,	Draft at 3 days sight.	llion,
Savingly,	Draft at 5 days sight.	lptor,
Savour,	Draft at 10 days sight.	rvy,
Savoury,	Draft at 15 days sight.	ttle,
Saxon,	Draft at 30 days sight.	the,
Scabbard,	Draft at 60 days sight.	mless,
Scaffold,	Draft at 90 days sight.	mster,
Scaly,	Draft at 5 days date.	rching,

advance on Bill
 ending Bill of Lading
 Lading until
 Lading until
 draw on you at sight
 draw on you
 draw on you
 and held for
 margin
 in required on
 sold, or advanced
 kept good.
 \$ _____ at _____
 \$ _____ at _____
 account of _____
 merce. .
 gain in _____
 lifts against _____
 ed.
 per.
 nce; must draw
 drafts.
 million,
 lptor,
 rvy,
 ttle,
 the,
 mless,
 mster,
 rehing,

amper,
 antly,
 antiness,
 antle,
 antling,
 arlet,
 avenger,
 enical,
 eptical,
 edule,
 nism.
 nismatic,
 nolastic,
 olist,
 olding,
 orner,
 oundrel,
 urger,
 abble,
 amble,
 ambling,
 awl,
 een,
 ible,
 riptural,
 ofula,
 uple,
 utiny,
 ffle.
 llion,
 lptor,
 rvy,
 ttle,
 the,
 mless,
 mster,
 rehing,

Draft at 10 days date.
 Draft at 15 days date.
 Draft at 20 days date.
 Draft at 30 days date.
 Draft at 60 days date.
 Draft at 90 days sight.
 Draft is correct; please honor same.
 Draft is correct: neglected to advise;
 _____ Draft has been returned from _____
 Draw at _____ days Bill of Lading attached.
 Draw at _____ days, equal cash.
 Draw at sight.
 Draw at sight, Bill of Lading attached.
 Draw at 1 day.
 Draw at 5 days.
 Draw at 10 days.
 Draw at 15 days.
 Draw at 20 days.
 Draw at 30 days.
 Draw at 45 days.
 Draw at 60 days.
 Draw at 90 days.
 Draw for \$ _____
 Draw for what margin you require.
 Draw on us (or me) at _____ days. Bill
 of Lading given up on acceptance.
 Draw on us (or me) at _____ days, Bill of
 Lading given up on acceptance, equal
 cash.
 Draw on us (or me) at sight at the rate of _____
 Draw on us (or me) at sight for _____
 against _____ bush _____
 Draw on us (or me) at sight for _____
 against the property in our (or my)
 hands.
 Draw on us (or me) through the "Mer-
 chants Bank of Canada," Stratford,
 Ont.
 Do., do., Chatham, Ont.
 Do., do., Montreal.
 Do., do., Chicago, Ill.
 Draw through the Bank of _____
 Draw through the "Union Bank of P. E.
 I.," Charlottetown, at _____
 Draw through the "Union Bank of P. E.
 I.," Summerside, at _____
 Draw through the "Merchants Bank of
 Halifax," Halifax, N. S.
 Do., do., Truro, N. S.

Seasonable,	Do., do., Pictou, N. S.
Secede,	Do., do., Charlottetown, P. E. I.
Seclusion,	Do., do., Summerside, P. E. I.
Secondary,	Draw through the "Bank of Prince Edward Island," Charlottetown, P. E. I.
Secondly,	Draw through the "Merchants Bank of E. Island," Charlottetown, P. E. I.
Secrecy,	Do., do., Georgetown, P. E. I.
Seconds,	Draw through "Summerside Bank," Summerside, P. E. I.
Secretary,	Draw through the Bank of Montreal.
Secretly,	Do., do., Halifax, N. S.
Sectarian,	Do., do., St. John, N. B.
Sectional,	Do., do., Moncton, N. B.
Secular,	Do., do., Chatham, N. B.
Security,	Do., do., Newcastle, N. B.
Sedate,	Draw through the "Merchants Bank of Canada."
Sedentary,	Draw through the "Bank of Nova Scotia."
Sediment,	Draw through the "Halifax Banking Co."
Sedition,	Draw through the "People's Bank of Halifax."
Seditious,	Draw through the "Union Bank of Halifax."
Seduce,	Draw through the "Bank of New Brunswick."
Seducible,	Draw through "M. Wood & Sons, Bankers," Sackville, N. B.
Seduction,	Draw with documents attached.
Sedulous,	Draw without documents being attached.
Seedling,	For what amount may we draw on your sight against shipment of — bush
Seemingly,	For what amount may we draw on your sight against the property now in your hands.
Seignior,	Have draft noted.
Seizable,	Have draft protested.
Seldom,	Have closed your trades, you may draw for \$ —
Selfishly,	Have drawn as before.
Semblance,	Have drawn at one day.
Seminary,	Have drawn at 5 days.
Semitone,	Have drawn at 10 days.
Senator,	Have drawn at 15 days.
Senatorial,	Have drawn at 20 days.
Senility,	Have drawn at 30 days.
Seniority,	Have drawn at 45 days.
Sensation,	Have drawn at 60 days.
Sensibly,	Have drawn at 90 days.
Sensorial,	Have drawn on you.

Sharpen,	The draft will be held by —
Sharply,	The draft should be held by —
Sharpness,	Unless you remit additional margin immediately we must cover your
Shatter,	Do. do. we must sell your property.
Sheathing,	Wait financial instructions which go forward by mail, before drawing.
Sheepish,	We will draw.
Sheeting,	Do. do. on you at —
Shelter,	We will protect your draft on —
Shelterless,	When does the draft fall due.
Shingle,	Who holds the draft.
Shining,	Will you remit or shall we draw.
Shirk,	Will you protect our draft on —
Shiver,	You can draw on —
Shivering,	You can draw on us for \$ — at — sight.
Shoaly,	You can draw on us for \$ — at — date.
Shod,	You can draw on J. R. Foster, Moncton, N. B.
Shopping,	You can draw on J. R. Foster through "Bank of Montreal," Moncton.
shorten,	You can draw on T. A. S. DeWolf & Agents "Anchor Line Steam Co.," Halifax, N. S.
Shouting,	You can draw on Miner T. Foster, Halifax, N. S.
Shovel,	You can draw on J. C. Mackintosh, Broker and Broker, Halifax, N. S.
Showers,	You can draw through J. C. Mackintosh, Banker and Broker, Halifax, N. S.
Showery,	You can remit New York Exchange draft will draw.
Showily,	Your draft on us is due,
Shrewdly,	Your draft on us for \$ — is due.
Shrilly,	Your draft on us for \$ — not advised. Shall we accept?
Shrivel,	Your draft refused acceptance for want of advice.
Shrubbery,	Your draft is due on the — Provide it.
Shyness,	Your time draft is here. According to invariable rule we have declined to accept, because Bank insists on holding the Bill of Lading until order, turity or payment of draft. We will accept upon delivery of documents to us, not otherwise.

EXCHANGE.

l by —
 eld by —
 dditional margin
 ust cover your s
 your property.
 ctions which go
 efore drawing,
 draft on —
 fall due.
 ll we draw.
 draft on —
 or \$ — at —
 or \$ — at —
 R. Foster, Mon
 R. Foster thro
 real," Moncton,
 S. DeWolf &
 r Line Steam
 S.
 er T. Foster,
 Mackintosh, B
 alifax, N. S
 J. C. Mackin
 ker, Halifax, N.
 ork Exchange o
 e,
 — is due.
 \$ — not adv
 eptance for wa
 e — Provid
 e: According
 e have declin
 Bank insists
 of Lading until
 t of draft. We
 very of docum
 ise.
 er,

Advise rate of Exchange.
 At current rate of Exchange.
 At Exchange of —
 Exchange is high.
 Exchange is low.
 Exchange is plentiful.
 Exchange is scarce.
 Have remitted New York Exchange.
 Do. do. Montreal do.
 Do. do. Halifax do.
 Do. do. St. John do.
 Money market easy.
 Money market tight.
 Present rate of Exchange too high.
 Present rate of Exchange too low.
 Remit New York Exchange.
 Do. Montreal do.
 Do. Halifax do.
 Do. St. John do.
 Do. Liverpool, G. B., do.
 Do. London, G. B., do.
 Selling rate for private sight bills on Lon-
 don is —
 Selling rate for private 30 d-s sight bills on
 London is —
 Selling rate for private 60 d-s sight bills on
 London is —
 Selling rate for private 90 d-s sight bills on
 London is —
 Selling rate for bankers sight bills on Lon-
 don is —
 Selling rate for banker 30 d-s sight bills on
 London is —
 Selling rate for bankers 60 d-s sight bills on
 London is —
 Selling rate for bankers 90 d-s sight bills on
 London is —
 £ sterling.
 S. sterling.
 D. sterling.
 Sterling money.
 £. S. D. Stg.
 Sterling Exchange at 6 per cent. advanc.
 " " " 6½ " "
 " " " 6¾ " "
 " " " 7 " "
 " " " 7½ " "
 " " " 7¾ " "

"	able,	Have failed.
"	gency,	Have not failed.
"	mbious,	Have a most honorable reputation.
"	histry,	Have met with a heavy loss ; would advise you to be careful in advancing.
"	brano,	He is safe for.
"	cerer,	He is not safe for.
"	cery,	Have suspended payment.
"	ely,	Inquire the means and standing of _____ and telegraph us result.
"	eness,	Is insolvent.
"	rel,	Is there any reason for the low standing of _____
"	ry,	May be trusted to the extent of \$ _____
"	ish,	May be trusted to any amount.
"	ndings,	Most honorable people.
"	ndly,	Not very respectable.
"	arly,	Our own affairs are unembarassed.
er cent. premi	rness,	Our own affairs are unembarassed to the extent of \$ _____
cent. discount	therly,	Please attend the meeting and watch our interests.
exchange,	icious,	Shall we attend the meeting on your behalf.
"	niel,	The persons you mention are considered highly respectable.
"	reness,	They are quite safe.
A. B., Exchange	ringly,	They are not safe.
B.,	rkle,	Unworthy of confidence.
"	rsely,	Worthy of confidence.
"	rtan.	We are anxious in consequence of the extensive operations with us about the financial standing of _____

FIRMS.

1.
ople.
g but honorable
anything to do
ion.
ditors payment
formation as to
reason of _____
e on a better
ers.
name on a bill
ir bankers.

INTEREST & COMMISSION.

some,	Commission	$\frac{1}{2}$	per cent.
somely,	do.	$\frac{1}{4}$	do.
ue,	do.	$\frac{1}{2}$	do.
nic,	do.	$\frac{3}{4}$	do.
able.	do.	1	do.
late.	do.	1 $\frac{1}{4}$	do.
lation,	do.	1 $\frac{1}{2}$	do.
ng,	do.	1 $\frac{3}{4}$	do.
le,	do.	2	do.

Titular,	do.	2½	do.
Timfary,	do.	3	do.
Toadstool,	do.	3½	do.
Toasting,	do.	4	do.
Tobine,	do.	4½	do.
Toccata,	do.	5	do.
Toecin,	do.	6	do.
Toddle,	do.	7	do.
Toddy,	do.	8	do.
Toffy,	do.	9	do.
Top,	do.	10	do.
Togated,	Commission — covers all charges.		
Toggle,	Commission agreed to,		
Toiler,	Commission is waved.		
Toilet,	— Commission is not sufficient.		
Toilful,	Commission selling — per cent.		
Toilsome,	Commission selling and guaranteeing per cent.		
Toilsomeness,	Free of Commission.		
Toilworn,	Free of Interest and Commission.		
Toledo,	Brokerage between us equally.		
Tolerable,	Subject to a Commission of —		
Tolerably,	What Commission do you charge for ing —		
Tolerance,	What Commission do you charge for ing —		
Tolerant,	We will divide the commission with y		
Tolerate,	Cannot pay more than a commission of per cent.		
Toleration,	We must have a commission of — cent. for buying —		
Tolling,	We must have a commission of — cent. for selling —		
Tollman,	Interest at 1 per cent.		
Tomahawk,	do.	2	do.
Tomato,	do.	3	do.
Tombless,	do.	4	do.
Tomboy,	do.	5	do.
Tombstone,	do.	6	do.
Tomfool,	do.	6½	do.
Tomfoolery,	do.	7	do.
Toneless,	do.	7½	do.
Tongueless,	do.	8	do.
Tonguetied,	do.	9	do.
Tonsil,	do.	10	do.
Tonsorial,	¼ per cent.		
Tonsure,	¼	do.	
Tontine,	¼	do.	
Toolchest,	1	do.	

olmaker,
 othache,
 othbrush,
 othless,
 othsome,
 othaz,
 otheful,
 othphet,
 othpiary,
 othpically,
 othpmast,
 othpographical,
 othpography,
 othrehbearer,
 othrment,
 othrmenter,
 othrnado,
 othrpedo,
 othrpid,
 othrpidity,
 othrpidity,
 othrpor,
 othrent,
 othrsion,
 othrcile,
 othrtoise,
 othrtuous,
 othrture,
 othryism,
 othryally,
 othrcan,
 othrchable,
 othrchilly,
 othrching,
 othrchingly,
 othrchy,
 othrchzen,
 othrchish,
 othrchhly,
 othrchghness,
 othrchrist,
 othrchmaline,
 othrchnament,
 othrchney,
 othrchcr,
 othrchage,
 othrchard,
 othrchardly,
 othrchelling,
 75

olmaker,	1½	do.
othache,	1½	do.
othbrush,	1¾	do.
othless,	2	do.
othsome,	2½	do.
oaz,	2½	do.
oeful,	2¾	do.
ophet,	3	do.
o piary,	3½	do.
o pically,	3½	do.
o mast,	3¾	do.
o graphical,	4	do.
o pography,	4½	do.
o chbearer,	4½	do.
o rment,	4¾	do.
o rmenter,	5	do.
o rnado,	5½	do.
o pedo,	5½	do.
o pid,	5¾	do.
o pidity,	6	do.
o pidly,	6½	do.
o por,	6½	do.
o rent,	6¾	do.
o sion,	7	do.
o tile,	7½	do.
o toise,	7½	do.
o tuous,	7¾	do.
o ture,	8	do.
o yism,	8½	do.
o ally,	8½	do.
o can,	8¾	do.
o chable,	9	do.
o chily,	9½	do.
o ching,	9½	do.
o chingly,	9¾	do.
o chy,	10	do.
o ghen,	15	do.
o hish,	20	do.
o hly,	25	do.
o ghness,	30	do.
o rist,	35	do.
o rmaline,	40	do.
o rnement,	45	do.
o rney,	50	do.
o ter,	55	do.
o tage,	60	do.
o ard,	65	do.
o ardiy,	70	do.
o elling,	75	do.

Tower,	80	do.
Towered,	85	do.
Towering,	90	do.
Towline,	95	do.
Townclerk.	100	do.

Telegraphing, Correspondence and Communications.

Traceable.	Answer by telegraph.
Tractable,	Answer by telegraph immediately.
Traction,	Answer quick at our expense.
Tradition,	Answer by night message.
Traduce,	Answer promptly as offer only holds until _____
Tragedy,	Answer telegram yes or no.
Tragical,	Answer by post.
Traitor,	Answered your telegram.
Tralation,	Advise purchase by telegraph.
Trample,	Advise sale by telegraph.
Tranquil,	Advise what has been done by telegraph.
Transact,	Advise state of market by telegraph.
Transcend,	Address telegrams for me to care of _____
Transcript,	Address your letters to me at _____
Transit,	As per my (our) letter of _____
Translate,	As per your letter of _____
Transmit,	As per my (our) telegram.
Transom,	As per your telegram.
Transplant,	As per their (his) telegram.
Transport,	Before you write.
Transpose,	Before you telegraph.
Trapan,	By this mail.
Travail,	By next mail.
Traverse,	By last mail.
Treacle,	Cannot get an answer.
Treadle,	Cannot give you an answer yet.
Treason,	Communicate with our agents at _____
Treatise,	Confirm by telegraph promptly.
Treble,	Did you telegraph to _____
Treuil,	Did you write to _____
Tremble,	Did you write from _____
Tremor,	Direct cable to _____
Trench,	Directed cable to _____
Trestle,	Deliver on receipt of telegram.

- vet. Don't understand your message, repeat the words that follow —
- angle, Don't understand your message, repeat the whole.
- ounal. Don't understand your message, repeat the 1st word.
- oute. Do. 2nd do.
- skery, Do. 3rd do.
- kie, Do. 4th do.
- ing, Do. 5th do.
- inning, Do. 6th do.
- ket, Do. 7th do.
- ce, Do. 8th do.
- pedal, Do. 9th do.
- let, Do. 10th do.
- od, Do. 11th do.
- ect, Do. 12th do.
- mph, Do. 13th do.
- pper, Do. 14th do.
- ical, Do. 15th do.
- vel, Do. 16th do.
- kle, Do. 17th do.
- lle, Do. 18th do.
- mpet, Do. 19th do.
- idle, Do. 20th do.
- fully, Don't think you understand the message.
- ful, Enclosure mentioned in your letter not enclosed.
- on, Explain fully by letter.
- bril, Explained fully by letter.
- or, Expect to hear from you by —
- ult, Forward by wire the following message, translated, to our agents at —
- ey, Forward the following message to —
- ip, Further particulars will be sent as soon as possible by wire.
- key, Give our message your immediate attention.
- et, Give immediate attention to our (my) letter.
- e, Got no message from you.
- kle, Got no letter from you.
- h, Got no message from —
- er, Got no letter from —
- al, Have made a mistake in our message.
- is, Have only postal communication with —
- gram. Have telegraphed them (him) to communicate with you.

Tyranny,	Have written them (him) to communicate with you.	ndalic, nity, oid, pour, riable, iance,
Tryo,	Have received to-day the following message from —	riation,
Ugliness,	Have you received letter of —	let,
Ulcer,	Have received your telegram of —	ican, eer, erator,
Ulcerate,	Have no advice from you by mail.	cial, us,
Ultimate,	If you do not telegraph immediately loose the business.	acity, andah,
Ultra,	If you telegraph immediately think we secure the business.	batim, bosity, dancy, digris, dify, dmin, dify, dically, dicate, druet, dicate, datory, driate, droy,
Umbel,	If we receive no answer from you will consider you mean yes.	dr,
Umpire,	If we receive no answer from you will consider you mean no.	dry, dant, diny, dible, dicate, dication, dry,
Unaided,	In replying to this message please sign your name in full.	yard, ager, able,
Unapt,	If accepted telegraph immediately.	T
Unarmed,	If not accepted telegraph immediately.	T
Unbias,	In our telegram the 1st word should be	T
Unclose,	In our telegram the 2nd word should be	T
Uncoil,	In our telegram the 3rd word should be	T
Unconcern,	In our telegram the 4th word should be	T
Unconth,	In our telegram the 5th word should be	T
Unction,	In our telegram the 6th word should be	T
Uneasy,	In our telegram the 7th word should be	T
Upland,	In our telegram the 8th word should be	T
Uplift,	In our telegram the 9th word should be	T
Uproot,	In our telegram the 10th word should be	T
Uranus,	In our telegram the 11th word should be	T
Urchin,	In our telegram the 12th word should be	T
Urgency,	In our telegram the 13th word should be	T
Usance,	In our telegram the 14th word should be	T
Usher,	In our telegram the 15th word should be	T
Ustion,	In our telegram the 16th word should be	T
Usurp,	In our telegram the 17th word should be	T
Utensil,	In our telegram the 18th word should be	T
Uterine,	In our telegram the 19th word should be	T
Utopian,	In our telegram the 20th word should be	T
Vacate,	Immediate reply required.	T
Vacation,	If you telegraph immediately.	T
Vacuity,	Let us know by telegraph what you have done.	T
Vacuum,	Let us know by telegraph when — arrived.	T
Vagary,	Letter for you posted.	T
Valet,	Letters are missing.	T
Valiant,	Letters received; will act on your instructions.	T
Vandal.	Make us an offer by telegraph.	T

- My (our) letter of — explains everything.
 No instructions from you by mail.
 No letters received from —
 No letters received from you since —
 Our telegram should read —
 Received your telegram: wire us the words
 that follow —
 Repeat your despatch, worded differently,
 as meaning is not clear.
 Repeat your despatch as we do not under-
 stand it.
 Reply by telegraph if satisfactory.
 Reply by telegraph if unsatisfactory
 Send the following message, translated,
 to —
 Send me (us) letter of introduction to —
 Show them (him) this telegram as your au-
 thority.
 Subject to immediate reply by telegraph.
 Subject to your immediate confirmation by
 telegraph.
 Telegraph often and keep us well posted.
 Telegraph the arrival of —
 Telegraph the departure of —
 Telegraph the date of departure.
 Telegraph the date of arrival.
 Telegraph when you can buy.
 Telegraph when you can sell.
 Telegraph when you can ship.
 Telegraph when you draw, and amount.
 Telegraph when you remit, and amount.
 Telegraph when you deposit, and amount.
 Telegraph when — stops advancing.
 Telegraph when — stops declining.
 Telegraph when you are offered any bar-
 gains.
 Telegraph arrival and condition of our —
 and state of the market.
 Telegraph receipts for to-day.
 Telegraph your stock.
 Telegraph best bid.
 Telegraph fully and often.
 Telegraph promptly and what progress.
 Telegraph price, quality and quantity.
 Telegraph any important changes in the
 market.
 Telegraph shipping instructions.
 Telegraph early to-day.
 Telegraph early to-morrow.

- Violent, Telegraph closing prices of —
Violin, Telegraph by night message closing price
of —
- Violinist, Telegraph quotations daily until further
vised.
- Virigo, Telegraph market daily by night message
Virginal, Telegraph in cipher.
Virtual, Telegraph in plain language.
Virtuous, Telegraph the care of — at —
Visage, Telegraph on Monday at —
Viscosity, " Tuesday at —
Viscount, " Wednesday at —
Visionary, " Thursday at —
Vitality, " Friday at —
Vitriol, " Saturday at —
- Vivacious, The following message is from —
Vivacity, The following is private and confidential
Vixen, The words you ask about is the cipher
meaning.
- Vocabulary, The words you ask about is the literal
meaning.
- Vocalist, The message ought to read as follows
Vocation, The means of communication between
and — are interrupted.
- Vocative, The means of communication between
and — are interrupted.
- Voiceless, There is a mistake in our message. Be
— instead of —
- Volatile, This telegram refers to letters which have
not yet reached you: wait their
arrival.
- Volcanic, Translate the following message and
ward to —
- Volcano, Translate the following message and
to —
- Volleyed, Want you to telegraph to —
Volume, Want you to write to —
Voluntary, Wait till you receive our letter of —
Voluptuous, Why don't you answer our telegram
Volute, Why don't you make use of the cipher
Vomiting, We are pushed for an answer: please hasten
it.
- Notary, We are waiting for a reply to our message
Voting, We (I) countermand our (my) cable order
Vowing, We (I) countermand order given in
(my) letter dated —
- Voyage, We don't understand your telegram.
Vulgar, We offer you subject to your immediate
reply by telegraph.

of —
 message closing phrase
 until further
 by night message
 age.
 — at —
 —
 t —
 ay at —
 at —
 at —
 s from —
 and confidential
 out is the cipher
 out is the life
 read as follows
 ation between
 upted.
 ation between
 upted.
 r message. R
 etters which h
 ou: wait their
 message and
 message and
 to —
 r letter of —
 our telegram
 e of the cipher
 swer: please h
 ply to our mess
 r (my) cable or
 rder given in
 our telegram.
 o your immed
 t.

ulgarity,
 culture,
 abble,
 abbling,
 addling,
 afer,
 aften,
 agering,
 aggish,
 agoner,
 agtail,
 aincoat,
 alist,
 aiter,
 aitress,
 akeful.
 akening,
 alking,
 alloping,
 alnut,
 alrus,
 altz,
 altzing,
 and,
 nder,
 ndering,
 anting.
 anton,
 antonly,
 arbled,
 arbling,
 arden,
 arding,
 ardobe,
 arfare,
 arlike,
 arming,
 arnish,
 arnness,
 aranty,
 arrior,
 arty,
 arhable,
 arhing,
 arpish,
 arpishly,
 arsted,
 arteful,
 artefully.

We telegraphed you but have no reply.
 Will write by next mail.
 Writing you full particulars.
 Writing you full instructions.
 We refer you to our telegram of the 1st.

"	"	"	"	"	"	2nd
"	"	"	"	"	"	3rd
"	"	"	"	"	"	4th
"	"	"	"	"	"	5th
"	"	"	"	"	"	6th
"	"	"	"	"	"	7th
"	"	"	"	"	"	8th
"	"	"	"	"	"	9th
"	"	"	"	"	"	10th
"	"	"	"	"	"	11th
"	"	"	"	"	"	12th
"	"	"	"	"	"	13th
"	"	"	"	"	"	14th
"	"	"	"	"	"	15th
"	"	"	"	"	"	16th
"	"	"	"	"	"	17th
"	"	"	"	"	"	18th
"	"	"	"	"	"	19th
"	"	"	"	"	"	20th
"	"	"	"	"	"	21st
"	"	"	"	"	"	22nd
"	"	"	"	"	"	23rd
"	"	"	"	"	"	24th
"	"	"	"	"	"	25th
"	"	"	"	"	"	26th
"	"	"	"	"	"	27th
"	"	"	"	"	"	28th
"	"	"	"	"	"	29th
"	"	"	"	"	"	30th
"	"	"	"	"	"	31st.

We refer you to your telegram of the 1st.

"	"	"	"	"	"	2nd.
"	"	"	"	"	"	3rd.
"	"	"	"	"	"	4th.
"	"	"	"	"	"	5th.
"	"	"	"	"	"	6th.
"	"	"	"	"	"	7th.
"	"	"	"	"	"	8th.
"	"	"	"	"	"	9th.
"	"	"	"	"	"	10th.
"	"	"	"	"	"	11th.
"	"	"	"	"	"	12th.
"	"	"	"	"	"	13th.
"	"	"	"	"	"	14th.

Wastefulness,	150	
Wasting,	180	
Watchful,	170	
Watchman,	180	
Watering,	190	Wilderness,
Waterish,	200	Wildly,
Wavelet,	210	Wilful,
Wavering,	220	Williness,
Waxen,	230	Willingly,
Wayward,	240	
Weakened,	250	Willow,
Weakly,	260	Wily,
Weakness,	270	Wimble,
Wealth,	280	Wince,
Wheedle,	290	
Wheeling,	300	Windage,
Whetstone,	310	Windfall,
Whiff,		Windiness,
Whig,		Windlass,
		Windward,
Whimper,	Your telegram received at —	
Whimsical,	You omitted to enclose.	
Whipped,	Your letter received.	
Whipping,	Your message has become unintelligible transmission.	
Whirligig,	Twenty-first.	
Whirlpool,	Twenty-second.	
Whisker,	Twenty-third.	
Whisper,	Twenty-fourth.	
Whist,	Twenty-fifth.	
Whistling,	Twenty-sixth.	
Whitening,	Twenty-seventh.	
Whiting,	Twenty eighth.	
Whittle,	Twenty-ninth.	
Wick,	Thirtieth	
Wicked,	Thirty-first.	
Wickedly,	One month.	
Wickedness,	Two months.	
Wicket,	Three months.	
Widen,	Three and six months.	
Widow,	Three, six and nine months.	
Wigwam,	Three, six, nine and twelve months.	

INSURANCE.

Wilderness, At what rate can you insure ?
 Wildly, Advise you to insure.
 Wilful, Are insured.
 Willness, Are not insured.
 Willingly, Are waiting for your instructions as to insurance.
 Willow, Are we to effect insurance or will you.
 Wily, Can you insure.
 Wimble, Can insure at — per cent.
 Wincc, Can insure freight under deck at — per cent.
 Can insure freight on deck at — per cent.
 Windage, Effect insurance.
 Windfall, Effect Marine insurance.
 Windiness, Get permission from Insurance Company
 for Boat — to go to —
 Windlass, Get permission from Insurance Company
 for Vessel — to go to —
 Windward, Have effected insurance.
 Windy, Have fully insured.
 Windowglass, Have you attended to insurance.
 Window, Have insured 10 per cent over invoice.
 Windowery, Insure 10 per cent. over invoice.
 Windowry, Insurance can be effected here at — per cent.
 Windowy, Including insurance.
 Windowy, Including Marine insurance.
 Windowy, In what Company is — insured, and for what amount ?
 Windowy, Keep fully insured in good offices.
 Windowy, Marine insurance is — per \$100.
 Windowy, — Is insured in — for — dollars.
 Windowy, — Is insured in — for — £
 Windowy, Must insure sufficient to cover us (me) in case of loss.
 Windowy, No insurance.
 Windowy, No orders from you to insure.
 Windowy, Policy of insurance.
 Windowy, Rate of insurance is — per cent.
 Windowy, Shall we insure.
 Windowy, Send Policy of Insurance.
 Windowy, Send Certificate of Insurance.
 Windowy, We have insured.
 Windowy, We will insure.
 Windowy, What is rate of Marine Insurance.

156
 180
 170
 180
 190
 200
 210
 220
 230
 240
 250
 260
 270
 280
 290
 300
 310
 320
 330
 340
 350
 360
 370
 380
 390
 400
 410
 420
 430
 440
 450
 460
 470
 480
 490
 500
 510
 520
 530
 540
 550
 560
 570
 580
 590
 600
 610
 620
 630
 640
 650
 660
 670
 680
 690
 700
 710
 720
 730
 740
 750
 760
 770
 780
 790
 800
 810
 820
 830
 840
 850
 860
 870
 880
 890
 900
 910
 920
 930
 940
 950
 960
 970
 980
 990
 1000

from us by the
 after market
 next session un
 d.
 at —

e unintelligible

ths.
 ve months.

FLOUR, GRADES & QUANTITIES.

CANADIAN FLOURS.

Witty,	Patent Flour,
Wizard,	Choice Superior Extra.
Woful,	Superior Extra.
Wolfish.	Choice
Wondrous,	Extra.
Wanted,	Fancy.
Wooded,	Strong Bakers.
Wooden,	Choice Spring Extra.
woodhouse,	Spring Extra.
wood-land,	Choice Superfine.
woody,	Fine.

AMERICAN FLOURS.

wover,	Patent (superlative) No. 5.
wool.	Patent XX Spring, (No. 4.)
woolen.	Winter Wheat XX, (No. 3.)
wooly.	Minnesota XX Spring, (No. 2.)
woolpack,	Spring Extra, (No. 1.)
wool-sack,	Strong Bakers, (No. 6.)
wordiness,	Corn Flour.

CANADIAN FLOURS.

wording,	25 Bbls. Patent.
wordy,	50
worker,	75
workhouse,	100
working,	125
workman,	25 Bbls. Choice Superior Extra.
workmanlike,	50
workshop,	75
world,	100
worlding,	125
worldly,	25 Bbls. Superior Extra.
worm,	50
worm-eaten,	75
worm-like,	100
wormy,	125
worried,	25 Bbls. Choice Extra.
worry,	50
worse,	75

orship,
 orshipful,
 orshipper,
 orst,
 orsted,
 orthily,
 orthinness,
 orthless,
 orthy,
 ound,
 ove,
 rangle,
 rangler.
 rappage,
 rapper,
 rapping,
 rath,
 rathful,
 reak,
 reath,
 reathy,
 reek,
 ren,
 rench,
 rest,
 restle,
 restling,
 retch,
 retched,
 riggle,
 ight,
 inkle,
 isk,
 ist-band,
 iter,
 ithe,
 rongful,
 ongly,
 oth.
 ough.
 bec,
 cht,
 chting,
 nkee,
 rdstick,
 wl,
 an.

	orship,	100
	orshipful,	125
	orshipper,	25	Bbbs. Extra.		
S.	orst,	50
	orsted,	75
	orthily,	100
	orthiness,	125
	orthless,	25	Bbbs. Fancy.		
	orthy,	50
	ound,	75
	ove,	100
	rangle,	125
	rangler.	25	Bbbs. Strong Bakers.		
	rappage,	50
	rapper,	75
	rapping,	100
	rath,	125
S.	rathful,	25	Bbbs. Choice Spring Extra.		
	reak,	50
	reath,	75
	reathy,	100
	reck,	125
	ren,	25	Bbbs. Spring Extra.		
	rench,	50
	rest,	75
	restle,	100
	restling,	125
S.	retch,	25	Bbbs. Choice Superfine.		
	retched,	50
	riggle,	75
	right,	100
	rinkle,	125
	risk,	25	Bbbs. Fine.		
Extra.	rist-band,	50
..	riter.	75
..	ithe.	100
..	rongful,	125

AMERICAN FLOURS.

	rongly,	25	Bbbs. Patent (Superlative,) No. 5.
	oth.	50	..
	rought.	75	..
	bec,	100	..
	cht.	125	..
	chting,	25	Bbbs. Patent XX Spring, No. 4.
	nkee,	50	..
	rdstick,	75	..
	wl,	100	..
	an.	125	..

Yearling,	25	Bbls. Winter Wheat, XX. No. 3.
Yearly,	50
Yearen,	75
Yearning,	100
Yeast,	125
Yelk,	25	Bbls. Minnesota, XX Spring, No. 2.
Yelp,	50
Yelping,	75
Yeoman,	100
Yeomanry,	125
Yoke,	25	Bbls. Spring Extra, No. 1.
Yolk,	50
Yonder,	75
Yore,	100
Young,	125
Younger,	25	Bbls. Strong Bakers, No. 6.
Youngest,	50
Youngster,	75
Youtiful,	100
Yule,	125
Zealot,	25	Bbls. Corn Flour.
Zebra,	50
Zeyphr,	75
Zinc,	100
Zodiac.	125

vin, C
 effc, C
 ckle, C
 etre, T
 ere, T

C.	D.	G.
1	2	1

TIFIES.

XX. No. 3.

Spring, No. 2.

o. 1.

No. 6.

vin,
cific,
ckle,
etre,
ere,

Cwt. (112 lbs.)
Cental (100 lbs.)
One hundred pounds, (100 lbs.)
Ton (2240 lbs.)
Ton (2000 lbs.)

WEIGHTS.

KEY

C.	D.	G.	R.	E.	A.	T.	F.	O.	L.	K.	S.
1	2	3	4	5	6	7	8	9	0		

R

Standard
rows :-

Wheat,.....
Corn,.....
Rye,.....
Peas,.....
Barley,.....
Oats,.....
Beans.....
Clover Seed

Standard
rows :-

Wheat.....
Corn.....
Oats.....
Potatoes.....

I have p
of freight p
Wheat, Corn

per 100 lbs.	Wheat 60 lbs.	Corn 50 lbs.
5	3.0	2.
5	3.6	3.
5	4.2	3.5
5	4.8	4.
9	5.4	5.
0	6.0	5.5
1	6.6	6.
2	7.2	6.5
2 1/2	7.5	7.
3	7.8	7.5
4	8.4	7.8
5	9.0	8.4
6	9.6	9.0
7	10.2	9.6
7 1/2	10.5	9.8
8	10.8	10.1

RAILROAD FREIGHTS.

Standards of Canadian Market per Bushel are as follows:—

Wheat,.....60 lbs.	Timothy Seed,..... 48 lbs.	Carrots,.....60 lbs.
Corn,..... 56 "	Buckwheat, 48 "	Parsnips, .. 60 "
Rye,.....56 "	Flax Seed, 50 "	Beets,60 "
Peas,.....66 "	Hemp Seed, 41 "	Onions, 60 "
Barley,.....48 "	Blue Grass	Salt,..... 56 "
Oats,..... 34 "	Seed14 "	Dried Apples.....22 "
Beans60 "	Beans,40 "	Dried Peaches,....33 "
Clover Seed 60 "	Potatoes,....60 "	Malt, 36 "
	Furnips,....60 "	

Standard of Chicago Market, per Bushel, are as follows:—

Wheat.....60 lbs.	Barley..... 48 lbs.	Timothy..... 45 lbs.
Corn..... 56 "	Rye.....56 "	Clover..... 60 "
Oats 32 "	Buckwheat.55 "	Millet.....50 "
Potatoes .. 60 "	Flax Seed.. 56 "	Hungain... 48 "

I have prepared the following Table to show the cost of freight per Bushel, at a given price per 100 lbs. on Wheat, Corn, Barley and Oats. —

per 100 lbs.	Wheat 60 lbs.	Corn 56 lbs.	Barley 48 lbs.	Oats 32 lbs.	Oats 34 lbs.	Freight per 100 lbs.	Wheat 60 lbs.	Corn 56 lbs.	Barley 48 lbs.	Oats 32 lbs.	Oats 34 lbs.
5	3.0	2.8	2.4	1.6	1.7	19	11.4	10.6	9.1	6.1	6.5
6	3.6	3.4	2.9	1.9	2.0	20	12.0	11.2	9.6	6.4	6.8
7	4.2	3.9	3.4	2.2	2.4	21	12.6	11.8	10.1	6.7	7.1
8	4.8	4.5	3.8	2.6	2.7	22	13.2	12.3	10.6	7.0	7.5
9	5.4	5.0	4.3	2.9	3.1	22½	13.5	12.6	10.8	7.2	7.7
10	6.0	5.6	4.8	3.2	3.4	23	13.8	12.9	11.0	7.4	7.9
11	6.6	6.2	5.3	3.5	3.7	24	14.4	13.4	11.5	7.7	8.2
12	7.2	6.7	5.8	3.8	4.1	25	15.0	14.0	12.0	8.0	8.5
13	7.5	7.0	6.0	4.0	4.3	26	15.6	14.6	12.5	8.3	8.8
14	7.8	7.3	6.2	4.2	4.4	27	16.2	15.1	13.0	8.6	9.1
15	8.4	7.8	6.7	4.5	4.8	27½	16.5	15.4	13.2	8.8	9.3
16	9.0	8.4	7.2	4.8	5.1	28	16.8	15.7	13.4	9.0	9.5
17	9.6	9.0	7.7	5.1	5.4	29	17.4	16.2	13.9	9.3	9.8
18	10.2	9.5	8.2	5.4	5.8	30	18.0	16.8	14.4	9.6	10.1
19	10.5	9.8	8.4	5.6	6.0	31	18.6	17.3	14.9	9.9	10.4
20	10.8	10.1	8.6	5.8	6.1	32	19.2	17.9	15.4	10.2	10.7

RAILROAD FREIGHTS.

(CONTINUED.)

Freight per 100 lbs.	Wheat 60 lbs.	Corn 56 lbs.	Barley 48 lbs.	Oats 32 lbs.	Oats 34 lbs.	Freight per 100 lbs.	Wheat 60 lbs.	Corn 56 lbs.	Barley 48 lbs.	Oats 32 lbs.	Oats 34 lbs.
32½	19.5	18.2	15.6	10.4	11.1	65	39.0	36.4	31.2	20.8	22
33	19.8	18.5	15.8	10.6	11.2	66	39.6	37.0	31.7	21.1	22
34	20.4	19.0	16.3	10.9	11.6	67	40.2	37.5	32.2	21.4	22
35	21.0	19.6	16.8	11.2	11.9	67½	45.0	37.8	32.4	21.6	22
36	21.6	20.2	17.3	11.5	12.2	68	40.8	38.1	32.6	21.8	23
37	22.2	20.7	17.8	11.8	12.6	69	41.4	38.6	33.1	22.1	23
37½	22.5	21.0	18.0	12.0	12.8	70	42.0	39.2	33.6	22.4	23
38	22.8	21.3	18.2	12.2	12.9	71	42.6	39.8	34.1	22.7	24
39	23.4	21.8	18.7	12.5	13.3	72	43.2	40.3	34.6	23.0	24
40	24.0	22.4	19.2	12.8	13.6	72½	43.5	40.6	34.8	23.2	24
41	24.6	23.0	19.7	13.1	13.9	73	43.8	40.9	35.1	23.4	24
42	25.2	23.5	20.2	13.4	14.3	74	44.4	41.4	35.5	23.7	25
42½	25.5	23.8	20.4	13.6	14.5	75	45.0	42.0	36.0	24.0	25
43	25.8	24.1	20.6	13.8	14.6	76	45.6	42.6	36.5	24.3	25
44	26.4	24.6	21.1	14.1	15.0	77	46.2	43.1	37.0	24.6	26
45	27.0	25.2	21.6	14.4	15.3	77½	46.5	43.4	37.2	24.8	26
46	27.6	25.8	22.1	14.7	15.6	78	46.8	43.7	37.5	25.0	26
47	28.2	26.3	22.6	15.0	16.0	79	47.4	44.2	38.0	25.3	26
47½	28.5	26.6	22.8	15.2	16.2	80	48.0	44.8	38.4	25.6	27
48	28.8	26.9	23.0	15.4	16.3	81	48.6	45.4	38.9	25.9	27
49	29.4	27.4	23.5	15.7	16.7	82	49.2	45.9	39.4	26.2	27
50	30.0	28.0	24.0	16.0	17.0	82½	49.5	46.2	39.6	26.4	28
51	30.6	28.6	24.5	16.3	17.3	83	49.8	46.5	40.0	26.6	28
52	31.2	29.1	25.0	16.6	17.7	84	50.4	47.0	40.3	26.9	28
52½	31.5	29.4	25.2	16.8	17.9	85	51.0	47.7	40.8	27.2	28
53	31.8	29.7	25.4	17.0	18.0	86	51.6	48.2	41.3	27.5	29
54	32.4	30.2	25.9	17.3	18.4	87	52.2	48.7	41.8	27.8	29
55	33.0	30.8	26.4	17.6	18.7	87½	52.5	49.0	42.0	28.0	29
56	33.6	31.4	26.9	17.9	19.0	88	52.8	49.3	42.3	28.2	29
57	34.2	31.9	27.4	18.2	19.4	89	53.4	49.8	42.7	28.5	30
57½	34.5	32.2	27.6	18.4	19.6	90	54.0	50.4	43.2	28.8	30
58	34.8	32.5	27.8	18.6	19.7	91	54.6	51.0	43.7	29.0	30
59	35.4	33.0	28.3	18.9	20.0	92	55.2	51.5	44.2	29.4	31
60	36.0	33.6	28.8	19.2	20.4	92½	55.5	51.8	44.4	29.6	31
61	36.6	34.2	29.3	19.5	20.7	93	55.8	52.1	44.6	29.8	31
62	37.2	34.7	29.7	19.8	21.1	94	56.4	52.6	45.1	30.1	31
62½	37.5	35.0	30.0	20.0	21.3	95	57.0	53.2	45.6	30.4	32
63	37.8	35.3	30.2	20.2	21.4	96	57.5	53.8	46.1	30.7	32
64	38.4	35.8	30.7	20.5	21.8	97	58.2	54.3	46.6	31.0	33

Freight per 100 lbs.	Wheat 60 lbs.	Corn 56 lbs.
58½	51-5	51-6
59	51-8	51-9

HTS.

RAILROAD FREIGHT.

(CONCLUDED.)

		Per 100 lbs.	
Barley 48 lbs.	Oats 32 lbs.	Wheat 60 lbs.	Corn 56 lbs.
31.2	20.8	58-5	51-6
31.7	21.1	58-8	51-9
32.2	21.4		46-8
32.4	21.6		48 lbs.
32.6	21.8		Oats 32 lbs.
33.1	22.1		Oats 34 lbs.
33.6	22.4		Freight per 100 lbs.
34.1	22.7		Wheat 60 lbs.
34.6	23.0		Corn 56 lbs.
34.8	23.2		Barley 48 lbs.
35.1	23.4		Oats 32 lbs.
35.5	23.7		Oats 34 lbs.
36.0	24.0	99	
36.5	24.3	59-1	
37.0	24.6	55-1	
37.2	24.8	47-5	
37.5	25.0	48-0	
38.0	25.3	31-7	
38.4	25.6	32-0	
38.9	25.9	33-7	
39.4	26-2		
39.6	26-4		
40.0	26-6		
40.3	26-9		
40.8	27-2		
41.3	27-5		
41.8	27-8		
42.0	28-0		
42.3	28-2		
42.7	28-5		
43.2	28-8		
43.7	29-0		
44.2	29-4		
44.4	29-6		
44.6	29-8		
45.1	30-1		
45.6	30-4		
46.1	30-7		
56.6	31-0		



Acceptances
Arrivals.....
Barley.....
Bank Credits
Bills of Lading
Brokerages.....
Banking.....
Buying, (Cus
Buying, (Com
Cabling.....
Commissions
Commodities
Condition an
Consignee or
Consignment
Corresponden
Cost and Pric
Corn and Cor
Dates.....
Delays.....
Delivery.....
Demurrage..
Drafts.....
Duties.....
Exchange....
Flour.....
Freights...
Financial....
Trades.....
Guarantees..
Holding and S
Instructions..
Insurance, (ge
Interest.....
Key to letters
Pay Days.....
Liabilities....
Limits.....
Letters.....

INDEX.

	PAGE.
Acceptances.....	33
Arrivals.....	21
Barley.....	4
Bank Credits.....	34
Bills of Lading.....	35
Brokerages.....	43
Banking.....	33
Buying, (Customer).....	12
Buying, (Commission Merchant).....	14
Cabling.....	46
Commissions.....	33, 43
Commodities.....	3, 51
Condition and Quantity.....	21
Consignee or Commission Merchant.....	17
Consignments.....	12, 31
Correspondence.....	10, 11, 46
Cost and Prices.....	5, 56
Corn and Corn Meal.....	3
Dates.....	52
Delays.....	25, 31
Delivery.....	26
Demurrage.....	20
Drafts.....	36, 40
Duties.....	25
Exchange.....	41
Flour.....	54
Freights.....	31, 59
Financial.....	33
Grades.....	54
Guarantees.....	34
Holding and Storing.....	19
Instructions.....	22, 33, 46
Insurance, (general).....	53
Interest.....	43
Key to letters.....	56
Day Days.....	19
Liabilities.....	42
Limits.....	16
Letters.....	10, 11, 22, 46

INDEX.

(CONTINUED.)

	PAGE
Markets.....	11
Miscellaneous Phases.....	22
Negotiations.....	22, 46
Names of Articles.....	3, 54
Oats.....	3
Offers, (general).....	14, 33
Orders, (execution of).....	12, 15, 28
Peas.....	4
Payments.....	33
Percentages.....	41, 48
Proceeds.....	33
Profits.....	33
Protests.....	33
Purchasing, (orders and instructions about).....	12, 14, 22, 28
Quality and Condition.....	21
Quantities.....	4, 5, 54
Quotations.....	5, 56
Remittances.....	41
Rejections.....	21
Sailing or Date of Shipment.....	26
Selling, (Customer).....	16
Selling, (Commission Merchant).....	17
Shipping, (General Phases).....	28, 31
Standing of Firms.....	42
Storage.....	19
Standards.....	57
Terms.....	36
Time of Delivery or Shipment.....	26
Telegraphing.....	46, 52
Tons.....	56
Weights, &c.....	56, 57
Wheat.....	3



