

**CIHM  
Microfiche  
Series  
(Monographs)**

**ICMH  
Collection de  
microfiches  
(monographies)**



**Canadian Institute for Historical Microreproductions / Institut canadien de microreproductions historiques**

**© 1996**

## Technical and Bibliographic Notes / Notes techniques et bibliographiques

The Institute has attempted to obtain the best original copy available for filming. Features of this copy which may be bibliographically unique, which may alter any of the images in the reproduction, or which may significantly change the usual method of filming are checked below.

- Coloured covers / Couverture de couleur
- Covers damaged / Couverture endommagée
- Covers restored and/or laminated / Couverture restaurée et/ou pelliculée
- Cover title missing / Le titre de couverture manque
- Coloured maps / Cartes géographiques en couleur
- Coloured ink (i.e. other than blue or black) / Encre de couleur (i.e. autre que bleue ou noire)
- Coloured plates and/or illustrations / Planches et/ou illustrations en couleur
- Bound with other material / Relié avec d'autres documents
- Only edition available / Seule édition disponible
- Tight binding may cause shadows or distortion along interior margin / La reliure serrée peut causer de l'ombre ou de la distorsion le long de la marge intérieure.
- Blank leaves added during restorations may appear within the text. Whenever possible, these have been omitted from filming / Il se peut que certaines pages blanches ajoutées lors d'une restauration apparaissent dans le texte, mais, lorsque cela était possible, ces pages n'ont pas été filmées.
- Additional comments / Commentaires supplémentaires:

L'Institut a microfilmé le meilleur exemplaire qu'il lui a été possible de se procurer. Les détails de cet exemplaire qui sont peut-être uniques du point de vue bibliographique, qui peuvent modifier une image reproduite, ou qui peuvent exiger une modification dans la méthode normale de filmage sont indiqués ci-dessous.

- Coloured pages / Pages de couleur
- Pages damaged / Pages endommagées
- Pages restored and/or laminated / Pages restaurées et/ou pelliculées
- Pages discoloured, stained or foxed / Pages décolorées, tachetées ou piquées
- Pages detached / Pages détachées
- Showthrough / Transparence
- Quality of print varies / Qualité inégale de l'impression
- Includes supplementary material / Comprend du matériel supplémentaire
- Pages wholly or partially obscured by errata slips, tissues, etc., have been refilmed to ensure the best possible image / Les pages totalement ou partiellement obscurcies par un feuillet d'errata, une pelure, etc., ont été filmées à nouveau de façon à obtenir la meilleure image possible.
- Opposing pages with varying colouration or discolourations are filmed twice to ensure the best possible image / Les pages s'opposant ayant des colorations variables ou des décolorations sont filmées deux fois afin d'obtenir la meilleure image possible.

This item is filmed at the reduction ratio checked below /  
Ce document est filmé au taux de réduction indiqué ci-dessous.

10x																				
					✓															
	12x			16x			20x			24x			28x			32x				

The copy filmed here has been reproduced thanks to the generosity of:

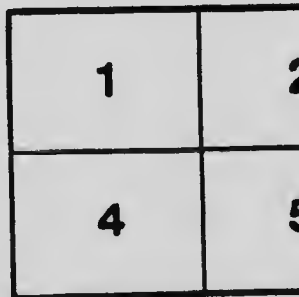
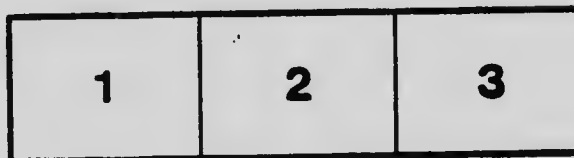
Special Collections Division  
University of British Columbia Library

The images appearing here are the best quality possible considering the condition and legibility of the original copy and in keeping with the filming contract specifications.

Original copies in printed paper covers are filmed beginning with the front cover and ending on the last page with a printed or illustrated impression, or the back cover when appropriate. All other original copies are filmed beginning on the first page with a printed or illustrated impression, and ending on the last page with a printed or illustrated impression.

The last recorded frame on each microfiche shell contain the symbol  $\rightarrow$  (meaning "CONTINUED"), or the symbol  $\nabla$  (meaning "END"), whichever applies.

Maps, plates, charts, etc., may be filmed at different reduction ratios. Those too large to be entirely included in one exposure are filmed beginning in the upper left hand corner, left to right and top to bottom, as many frames as required. The following diagrams illustrate the method:



L'exemplaire filmé fut reproduit grâce à la générosité de:

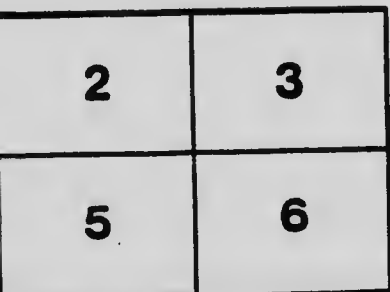
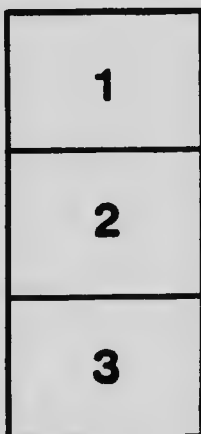
Special Collections Division  
University of British Columbia Library

Les images suivantes ont été reproduites avec le plus grand soin, compte tenu de la condition et de la netteté de l'exemplaire filmé, et en conformité avec les conditions du contrat de filmage.

Les exemplaires originaux dont la couverture en papier est imprimée sont filmés en commençant par le premier plat et en terminant soit par la dernière page qui comporte une empreinte d'impression ou d'illustration, soit par le second plat, selon le cas. Tous les autres exemplaires originaux sont filmés en commençant par la première page qui comporte une empreinte d'impression ou d'illustration et en terminant par la dernière page qui comporte une telle empreinte.

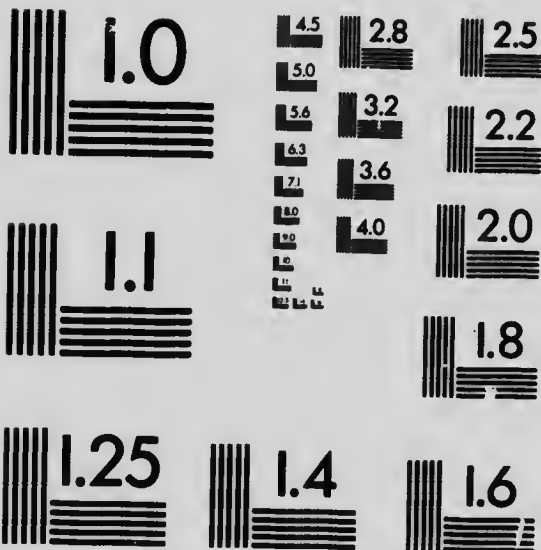
Un des symboles suivants apparaîtra sur la dernière image de chaque microfiche, selon le cas: le symbole  $\rightarrow$  signifie "A SUIVRE", le symbole  $\nabla$  signifie "FIN".

Les cartes, planches, tableaux, etc., peuvent être filmés à des taux de réduction différents. Lorsque le document est trop grand pour être reproduit en un seul cliché, il est filmé à partir de l'angle supérieur gauche, de gauche à droite, et de haut en bas, en prenant le nombre d'images nécessaire. Les diagrammes suivants illustrent la méthode.



# MICROCOPY RESOLUTION TEST CHART

(ANSI and ISO TEST CHART No. 2)



**APPLIED IMAGE Inc**

1653 East Main Street  
Rochester, New York 14609 USA  
(716) 482 - 0300 - Phone  
(716) 288 - 5989 - Fax


SPAM

7298

**KEEP THIS FOR REFERENCE.**

---

---

**Valuable **  
**Information**

---


---

**ABOUT**

**VANCOUVER**

---

---

**Commercial Metropolis  
of British Columbia. **

---

---

**Compliments of**

**A. A. BOAK & CO., Limited,  
515 Hastings St. W., Vancouver, B.C.**

❖❖❖❖ **MONEY** ❖❖❖❖



You can do a whole lot with **MONEY**.



You can buy the **EARTH** and build a  
**HOME** for yourself.



But you must have the **MONEY**. Have  
you got it?



If not, then we will lend it to you on any  
plan, from one year to five years on  
Straight Loan plan, and from 63 months  
to 154 months repayable in Monthly  
Instalments, at figures less than rental.



**A. A. Boak & Co., Ltd.**

HASTINGS ST.  
FINANCIAL AND REAL ESTATE AGENTS.

# VANCOUVER.

---

**The City of Vancouver** was incorporated in 1886, and was burnt in June, same year.

In 1886, population was 1,000 ;

In 1900, " is 30,000 to 35,000.

**In 1899**, the amount of Capital invested in buildings in Vancouver, estimated on the most reliable authority, was \$1,500,000, and according to the Board of Trade Report for that year, at least \$500,000 in course of construction, etc.

**Vancouver** is the terminus of the Canadian Pacific Railway and the palatial Steamships of that Company sailing to China and Japan and Australia make Vancouver their headquarters.

**Vancouver** is the headquarters for the Union S. S. Co. of B. C., and their steamers sail regularly for Juneau, Dyea and Skagway, Alaska, and all way ports.

**Daily Boats to Victoria and Nanaimo** by the C. P. N. and E. & N. Ry. Co.'s steamers, and tri-weekly to and from Seattle and every five days to and from San Francisco by the Pacific Coast S. S. Co.'s boats.



# **..Fire Insurance..**

**Insure only in  
Reliable Companies.**

**YOU need take NO RISK. Let US do that.**

**Your BUILDINGS, FURNITURE, STOCK,  
ETC., should be insured NOW.**

**We represent TWO OLD AND TRIED Brit-  
ish Fire Insurance Companies—**

**The Caledonian Insurance Co.,**

**OF EDINBURGH, SCOT.**

**Founded 1805. Assets, \$10,000,000.**

**Losses Paid, over \$10,000,000.**

**..and..**

**The Manchester Assurance Co ,**

**OF MANCHESTER, ENG.**

**Established 1824.**

**Capital. \$10,000,000.**

**A. A. BOAK & CO., Ltd.**

**VANCOUVER,**

**RESIDENT AGENTS FOR MAINLAND.**

**KEEP THIS. IT WILL BE USEFUL.**

**FIRE ALARM BOXES—Locations.**

- 5—Corner Drake and Granville Sts.
- 6—Corner Bute and Barclay Sts.
- 7—Corner Comox and Nicola Sts.
- 12—Corner Haro and Denman Sts.
- 13—Corner Georgia and Pender Sts.
- 14—Corner Georgia and Burrard Sts.
- 15—Corner Pender and Thurlow Sts.
- 19—C. P. R. wharf, next freight offices.
- 21—Corner Granville and Hastings Sts.
- 23—Corner Lamer and Dunsmair Sts.
- 24—Corner Cambra and Robson Sts.
- 25—Corner Cordova and Cambra Sts.
- 31—Corner Carrall and Hastings Sts.
- 32—Corner Powell St. and Westminster Ave.
- 34—City Hall.
- 35—Corner Prior St. and Westminster Ave.
- 36—Corner Barnard St. and Jackson Ave.
- 37—Hastings Mill (office).
- 42—Corner Carl Ave. and Cordova St. East.
- 43—Corner Campbell Ave. and Keefer St.
- 61—Corner Seventh and Carroll Aves.
- 62—Corner Sixth and Westminster Aves.
- 63—Corner Thirteenth and Westminster Aves.
- 64—Sugar Refinery.
- 68—Corner Seventh Ave. and Centre St., Fairview.
- 67—Corner Seventh Ave. and Bridge St., Fairview.

The number of the box is indicated by the taps on the bell at No. 2 fire hall. For example, box 5 would be indicated by five taps in rapid succession, but box 23 would be indicated by two taps, a pause, then three taps.

It will be satisfactory to you to know when you hear the fire bell ring, that you insured, before it was too late, with  
**A. A. BOAK & CO., Ltd.**

***The London Guarantee  
and Accident Co., Ltd.***

OF LONDON, ENGLAND.

**Assets Available to Policy Holders Exceed  
\$2,000,000.**

The Policies of this Company pay you **Double Indemnity** if you meet with an accident while travelling.

They insure you against **Typhoid, Typhus and Scarlet Fever and Small Pox.**

The Company issues **Employer's Liability Policies** protecting Employers from loss in case of liability to Employees.

The Company insures **Elevators** in buildings.

The Company issues **Guarantee Bonds** on the fidelity of persons occupying positions of trust.

***For Rates, Etc., Apply to***

**A. A. BOAK & CO., Ltd.**

***General Agents.***

# Calendar, 1901.



JANUARY	FEBRUARY	MARCH
S .. 6 13 20 27	S .. 3 10 17 24	S .. 3 10 17 24 31
M .. 7 14 21 28	M .. 4 11 18 25	M .. 4 11 18 25 ..
T 1 8 15 22 29	T .. 5 12 19 26	T .. 5 12 19 26 ..
W 2 9 16 23 30	W .. 6 13 20 27	W .. 6 13 20 27 ..
T 3 10 17 24 31	T .. 7 14 21 28	T .. 7 14 21 28 ..
F 4 11 18 25 ..	F 1 8 15 22 ..	F 1 8 15 22 29 ..
S 5 12 19 26 ..	S 2 9 16 23 ..	S 2 9 16 23 30 ..
APRIL	MAY	JUNE
S .. 7 14 21 28	S .. 5 12 19 26	S .. 2 9 16 23 30
M 1 8 15 22 29	M .. 6 13 20 27	M .. 3 10 17 24 ..
T 2 9 16 23 30	T .. 7 14 21 28	T .. 4 11 18 25 ..
W 3 10 17 24 ..	W 1 8 15 22 29	W .. 5 12 19 26 ..
T 4 11 18 25 ..	T 2 9 16 23 30	T .. 6 13 20 27 ..
F 5 12 19 26 ..	F 3 10 17 24 31	F .. 7 14 21 28 ..
S 6 13 20 27 ..	S 4 11 18 25 ..	S 1 8 15 22 29 ..
JULY	AUGUST	SEPTEMBER
S .. 7 14 21 28	S .. 4 11 18 25	S 1 8 15 22 29
M 1 8 15 22 29	M .. 5 12 19 26	M 2 9 16 23 30
T 2 9 16 23 30	T .. 6 13 20 27	T 3 10 17 24 ..
W 3 10 17 24 31	W .. 7 14 21 28	W 4 11 18 25 ..
T 4 11 18 25 ..	T 1 8 15 22 29	T 5 12 19 26 ..
F 5 12 19 26 ..	F 2 9 16 23 30	F 6 13 20 27 ..
S 6 13 20 27 ..	S 3 10 17 24 31	S 7 14 21 28 ..
OCTOBER	NOVEMBER	DECEMBER
S .. 6 13 20 27	S .. 3 10 17 24	S 1 8 15 22 29
M .. 7 14 21 28	M .. 4 11 18 25	M 2 9 16 23 30
T 1 8 15 22 29	T .. 5 12 19 26	T 3 10 17 24 31
W 2 9 16 23 30	W .. 6 13 20 27	W 4 11 18 25 ..
T 3 10 17 24 31	T .. 7 14 21 28	T 5 12 19 26 ..
F 4 11 18 25 ..	F 1 8 15 22 29	F 6 13 20 27 ..
S 5 12 19 26 ..	S 2 9 16 23 30	S 7 14 21 28 ..

# THE CANADA ACCIDENT ASSURANCE CO.

Head Office, - - MONTREAL.

---

This Company insures PLATE GLASS against breakage.

Insures ELEVATORS in buildings.

Insures against ACCIDENTS and SICKNESS.

The SPECIAL HEALTH POLICY issued by this Company is well worth looking into. It is issued along with the Accident Policy of the Company.

A person holding a \$5,000 Accident Policy in this Company can secure the SPECIAL HEALTH POLICY for \$10.00 per year. Smaller amounts in proportion.

Policies Written by

**A. A. BOAK & Co., LTD.**

General Agents.

**TIME TABLE**

**UNION STEAMSHIP CO., OF B. C., Ltd.**

**CITY WHARF, VANCOUVER.**

For Sechelt, Texada, Lund, Cortes Island, Reed Island, Port Neville, and way ports. Every **TUESDAY**, at 9 a.m., by **S. S. COMOX**.

For Gibson's, Sechelt, Texada, Shoal Bay, Hastings Mill Camps, and way ports. Every **FRIDAY**, at 9 a. m., by **S. S. COMOX**.

For Port Neville, Alert Bay, Rivers Inlet, and way ports, for passengers and cargo. Every **WEDNESDAY**, at 9 a. m., by **S. S. COQUITLAM**.

For Skagway. Cargo Steamers Weekly. Capacity, 1,200 tons a month.

---

**NORTH VANCOUVER FERRY**

**TIME TABLE.**

Winter Service, commencing November, 1900,  
**S. S. NORTH VANCOUVER.**

Leaves Vancouver Ferry Slip, foot of Carrall street, at 7:20, 8:00, 9:00, 10:00, 11:20, 1:15, 3:15, 5:15, 6:15 and on Saturdays at 10:00 p. m.

Leaves North Vancouver at 7:35, 8:30, 9:30, 10:50, 12:00, 1:30, 4:00, 5:30, 6:30 and on Saturdays at 10:30 p. m.

Leaves Moodyville Mill at 8:20, 9:20, 10:50, 11:50, 1:40, 3:50, 5:40, 6:40 and on Saturdays at 10:20 p. m.

The 7:20 a. m. trip from Vancouver and 7:35 from North Vancouver will not run on Sundays.

# The Provincial Building and Loan Association, of Toronto.

(Incorporated 1891.)

Loans Money on the most approved  
Plan.

You have not to be a Stockholder.

Easy Terms of Repayment.

It will pay you to look into the Plans  
of this Company before borrow-  
ing elsewhere.

Apply to....

**A. A. BOAK & CO., Ltd.**

General Agents, Hastings St.

# VANCOUVER

Is headquarters for the **Mining, Fishing and Lumbering** interests of B. C.

**Vancouver** has one of the best Harbors in the world, with large Wharf Accommodation.

## BANKS IN VANCOUVER.

BANK OF BRITISH NORTH AMERICA.

BANK OF MONTREAL.

BANK OF BRITISH COLUMBIA.

BANK OF HAMILTON.

MERCHANTS BANK OF HALIFAX.  
(Now the Royal Bank of Canada.)

MOLSON'S BANK.

THE CANADIAN BANK OF COMMERCE.

THE IMPERIAL BANK.

NOTE.—The Bank of B. C. and the Canadian Bank of Commerce are now amalgamated.



# The Standard Life Assurance Co.

OF EDINBURGH, SCOT.

**PROVIDE FOR YOUR WIFE AND FAMILY.**

He is a mean man who neglects to look after the welfare of those depending upon his income during life.

The Policies of this Company are most liberal. Get rates and plans from

**A. A. BOAK & CO., Ltd., Agents.**

# VANCOUVER TARIFF OF RATES

## ONE-HORSE CABS.

For any time not exceeding 20 min., for 1 or 2 persons.....	\$0 50
3 or 4 ".....	0 75
Over 20 min., and not exceeding $\frac{1}{2}$ an hour, for 1 or 2 persons.	0 75
3 or 4 ".....	1 00
Over $\frac{1}{2}$ an hour, hour rates chargeable as follows :	
For 1st hour, for 1 or 2 persons.....	1 00
3 or 4 ".....	1 50
For every subsequent hour, for 1 or 2 persons.....	0 75
3 or 4 ".....	1 25

## TWO HORSE CABS.

For any time not exceeding 20 mins., for 1 or 2 persons.....	0 75
3 or 4 ".....	1 00
Over 20 mins., and not exceeding $\frac{1}{2}$ an hour, for 1 or 2 persons	1 00
3 or 4 ".....	1 25
Over $\frac{1}{2}$ an hour, hour rates chargeable as follows :	
For 1st hour, for 1 or 2 persons.....	1 50
3 or 4 ".....	1 75
For each subsequent hour, for 1 or 2 persons.....	1 25
3 or 4 ".....	1 50

Fractions of hours to be charged at proportionate rates.

Fifty per cent. added to tariff rates from 12 midnight to 5 a. m.

The tariff by the hour to apply to all drives extending outside the city limits, where the engagement is made in the city.

A charge of 25 cents may be made for each trunk or box carried by cabs and omnibuses, but no charge for anything shall be made that a passenger can carry in hand.

## OMNIBUSES.

For each passenger, per trip, each way.....	\$0 25
---	--------

## DRAYS.

For every 1-horse dray, per ton per mile.....	\$0 5
For every 1-horse dray, per ton per hour.....	0 75
For every 1-horse dray, per ton per day.....	5 00
For every 2-horse dray, per ton per mile.....	0 50
For every 2-horse dray, per ton per hour.....	1 00
For every 2-horse dray, per ton per day.....	7 00

## CAB AND EXPRESS.

Stands in Vancouver.....Cor. Abbott and Cordova.

# The Lloyds

Plate Glass Insurance Co.  
of New York.

Insures Plate Glass against breakage.

---

---

# The Registry Company

Of North America, Ltd.

Head Office, Toronto.

Identification, Sickness, Accident

• • Insurance. • •

---

---

# A. A. Boak & Co., Ltd.

General Agents,

Vancouver, B. C.

# REAL ESTATE DEPARTMENT

In a Growing and Progressive City like

## VANCOUVER

Changes are constantly taking place in the values of Properties, and if you want to buy and reap a benefit now is the time to look into the matter.

Very desirable Residences are to be procured in all parts of the City on easy terms.

If you want to buy a HOME come and see our list and prices.

We make a Specialty of managing the property of Non-Residents.

Rents and Interest Collected.

### A. A. BOAK & CO., Ltd.

Telephone 133.

P. O. Drawer 758.

**A. A. BOAK,**  
Pres. and Manager.

**H. HARRIS,**  
Secretary.

**D. H. HARRISON,**  
Vice-President.

# **A. A. BOAK & CO., Ltd.**

**INSURANCE, FINANCIAL AND REAL ESTATE AGENTS**

**515 HASTINGS ST.**

**VANCOUVER, B. C.**

Represent the following Reliable Companies:

**The Provincial Building and Loan Association  
OF TORONTO.**

**The Golden Age Insurance Co. (Fire.)**

**The Manchester Assurance Co. (Fire.)**

**The London Guarantee and Accident Co., Ltd.  
OF LONDON, ENG.**

**The Canada Accident Assurance Co.**

**The Standard Life Assurance Co.**

**The Lloyds Plate Glass Insurance Co.**

**The Registry Co. of North America, Ltd.**

---

**Telephone 133.**

**P. O. Drawer 758.**



