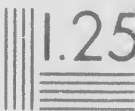
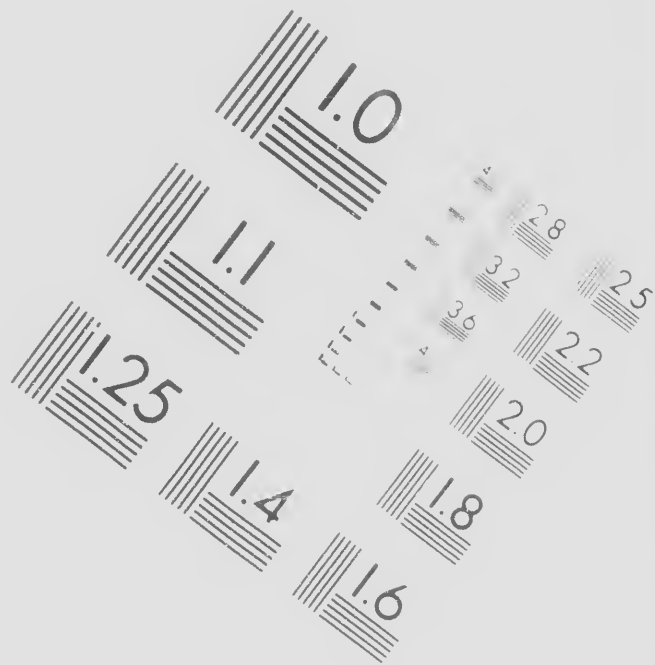
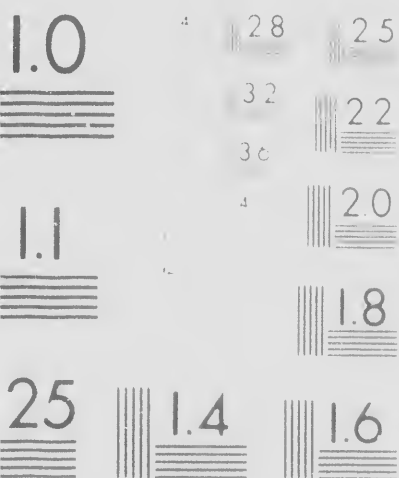


IMAGE
TEST TA





GE EVALUATION
TARGET (MT-3)



**CIHM/ICMH
Microfiche
Series.**

**CIHM/ICMH
Collection de
microfiches.**



Tech

The Institute has attempted to make the original copy available for reproduction, but the original copy which may be bibliographically important, which may alter any of the details of the reproduction, or which may be of special value, or which may be the usual method of film

Coloured covers/
Couverture de couleur

Covers damaged/
Couverture endommagée

Covers restored and
Couverture restaurée

Cover title missing/
Le titre de couverture

Coloured maps/
Cartes géographiques

Coloured ink (i.e. on
Encre de couleur (i.e.

Coloured plates and
Planches et/ou illustrations

Bound with other material
Relié avec d'autres ouvrages

Tight binding material

Technical and Bibliographic Notes/Notes techniques et bibliographiques

Attempted to obtain the best
copy for filming. Features of this
bibliographically unique,
copy of the images in the
original which may significantly change
the copy for filming, are checked below.

L'Institut a microfilmé le meilleur exemplaire
qu'il lui a été possible de se procurer. Les détails
de cet exemplaire qui sont peut-être uniques du
point de vue bibliographique, qui peuvent modifier
une image reproduite, ou qui peuvent exiger une
modification dans la méthode normale de filmage
sont indiqués ci-dessous.

Pages of
coloured

Coloured pages/
Pages de couleur

Pages
damaged

Pages damaged/
Pages endommagées

Pages
restored and/or laminated/
Pages restaurées et/ou pelliculées

Pages restored and/or laminated/
Pages restaurées et/ou pelliculées

Pages
with missing
parts

Pages discoloured, stained or foxed/
Pages décolorées, tachetées ou piquées

Pages
of
coloured
prints

Pages detached/
Pages détachées

Pages
of
other than blue or black/
Pages (i.e. autre que bleue ou noire)

Showthrough/
Transparence

Pages
with
illustrations/
Pages avec illustrations en couleur

Quality of print varies/
Qualité inégale de l'impression

Pages
of
other material/
Pages de autres documents

Includes supplementary material/
Comprend du matériel supplémentaire

Pages
with
folds, creases, or distortions

Pages with folds, creases, or distortions

The copy filmed here has been reproduced thanks to the generosity of:

Library of Congress
Photoduplication Service

The images appearing here are the best quality possible considering the condition and legibility of the original copy and in keeping with the filming contract specifications.

Original copies in printed paper covers are filmed beginning with the front cover and ending on the last page with a printed or illustrated impression, or the back cover when appropriate. All other original copies are filmed beginning on the first page with a printed or illustrated impression, and ending on the last page with a printed or illustrated impression.

Maps, plates, charts, etc., may be filmed at different reduction ratios. Those too large to be entirely included in one exposure are filmed beginning in the upper left hand corner, left to right and top to bottom, as many frames as required. The following diagrams illustrate the method:

L'exemplaire
générosité

Les images
plus grande
de la netteté
conformité
filmage.

Les exemplaires
papier est
par le premier
dernière page
d'impression
plat, selon
originaux.
première page
d'impression
la dernière
empreinte

Les cartes
filmés à d
Lorsque le
reproduit
de l'angle
et de hauteur
d'images

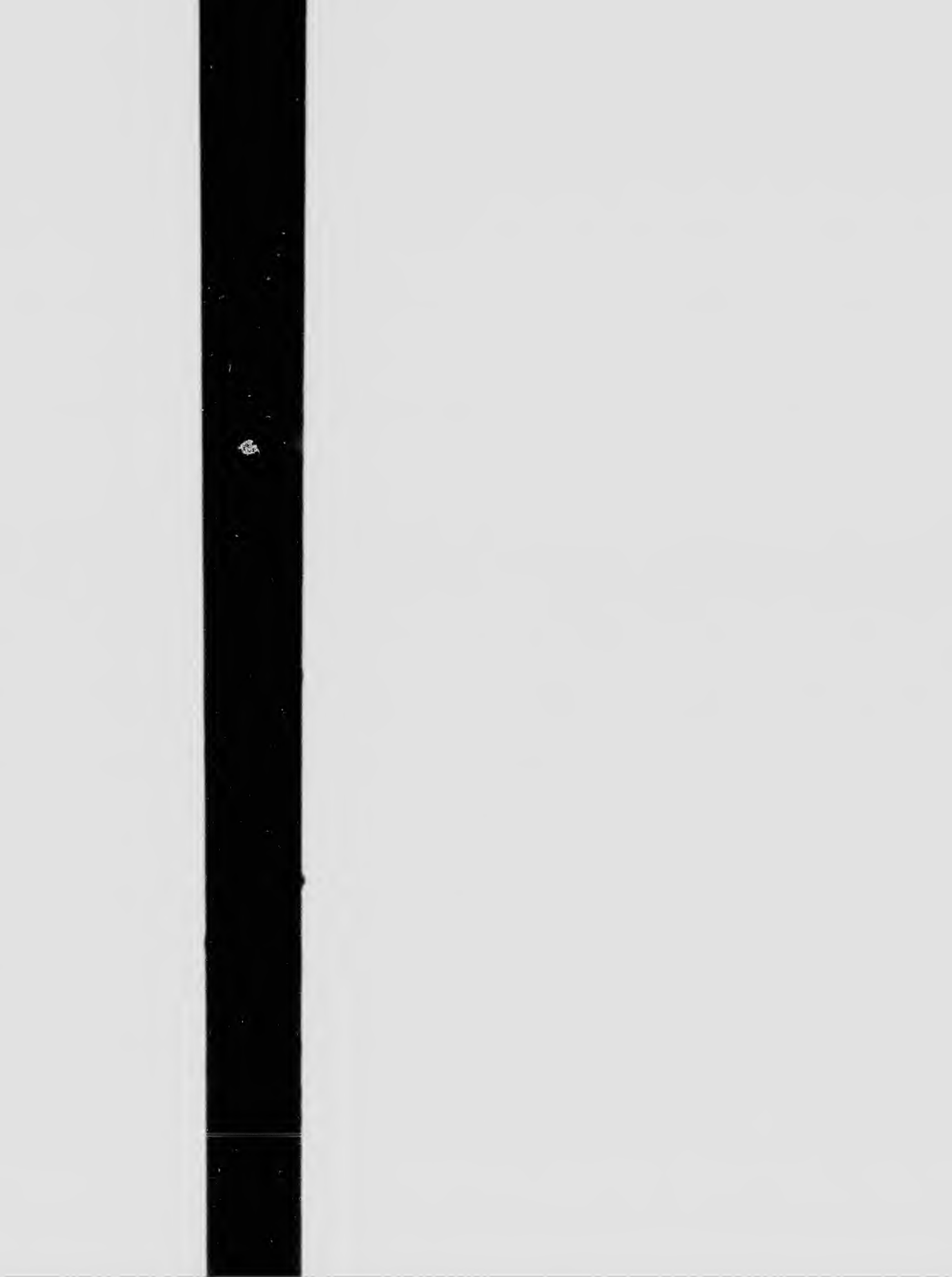
Exemplaire filmé fut reproduit grâce à la
coblité de:

Library of Congress
Photoduplication Service

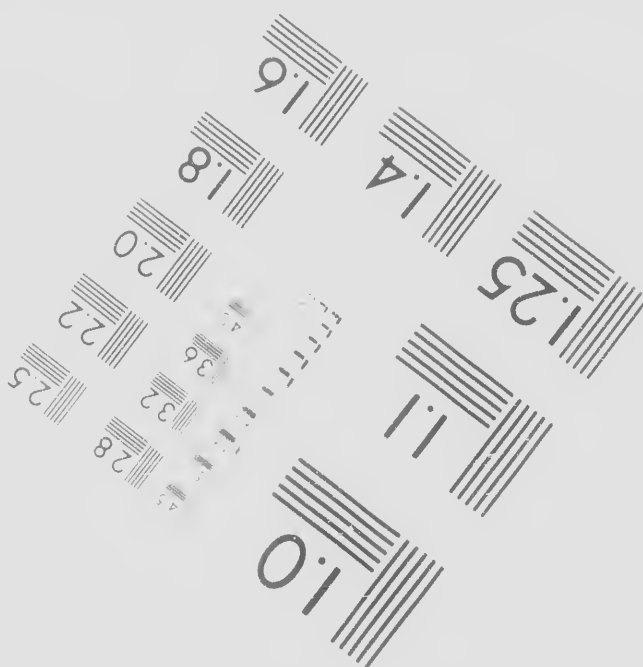
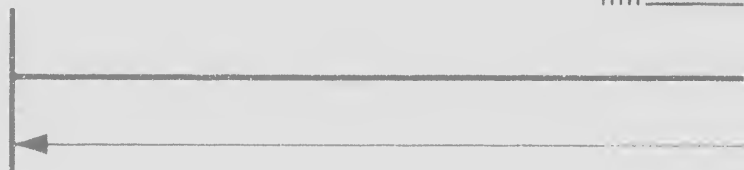
Pages suivantes ont été reproduites avec le
grand soin, compte tenu de la condition et
de l'état de l'exemplaire filmé, et en
conformité avec les conditions du contrat de
service.

Exemplaires originaux dont la couverture en
papier est imprimée sont filmés en commençant
par le premier plat et en terminant soit par la
première page qui comporte une empreinte
de pression ou d'illustration, soit par le second
plat selon le cas. Tous les autres exemplaires
sont filmés en commençant par la
première page qui comporte une empreinte
de pression ou d'illustration et en terminant par
la dernière page qui comporte une telle
empreinte.

Cartes, planches, tableaux, etc., peuvent être
filmés à des taux de réduction différents.
Si le document est trop grand pour être
filmé en un seul cliché, il est filmé à partir
de l'angle supérieur gauche, de gauche à droite,
de haut en bas, en prenant le nombre
de clichés nécessaire. Les diagrammes suivants



1919
1920
1921
1922
1923
1924
1925
1926
1927
1928
1929
1930
1931
1932
1933
1934
1935
1936
1937
1938
1939
1940
1941
1942
1943
1944
1945
1946
1947
1948
1949
1950
1951
1952
1953
1954
1955
1956
1957
1958
1959
1960
1961
1962
1963
1964
1965
1966
1967
1968
1969
1970
1971
1972
1973
1974
1975
1976
1977
1978
1979
1980
1981
1982
1983
1984
1985
1986
1987
1988
1989
1990
1991
1992
1993
1994
1995
1996
1997
1998
1999
2000
2001
2002
2003
2004
2005
2006
2007
2008
2009
2010
2011
2012
2013
2014
2015
2016
2017
2018
2019
2020
2021
2022
2023
2024
2025
2026
2027
2028
2029
2030
2031
2032
2033
2034
2035
2036
2037
2038
2039
2040
2041
2042
2043
2044
2045
2046
2047
2048
2049
2050

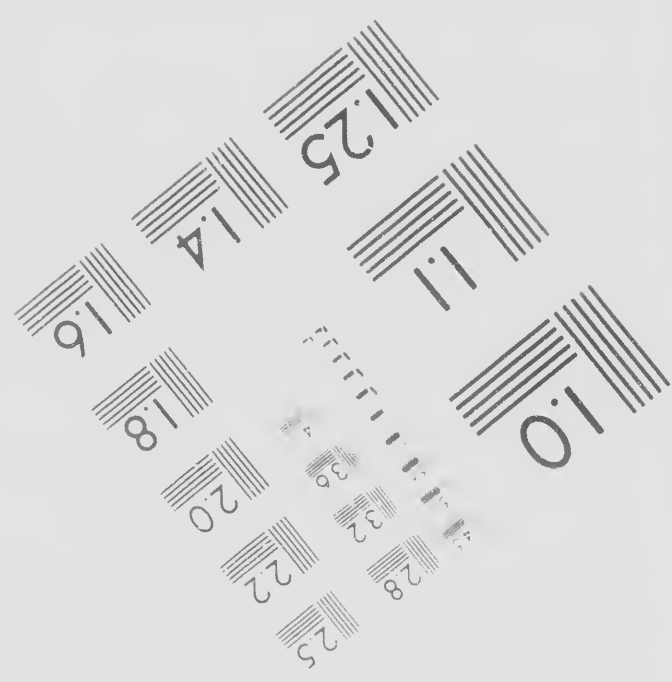


Photograph
Science
Corporat



6"

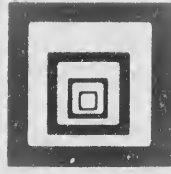
Canada



raphic
ces
ration

23 WEST MAIN STREET
WEBSTER, N.Y. 14580
(716) 872-4503





Canadian Institute for Historical Microreproductions / Institut canadien de microreproductions historiques

© 1986

s historiques

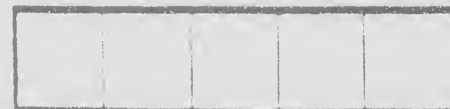
6

- Coloured plates and
Planches et/ou illus
- Bound with other m
Relié avec d'autres
- Tight binding may c
along interior marg
La reliure serrée pe
distorsion le long d
- Blank leaves added
appear within the t
have been omitted
Il se peut que certa
lors d'une restaurat
mais, lorsque cela
pas été filmées.
- Additional commen
Commentaires supp

This item is filmed at the
Ce document est filmé a

10X

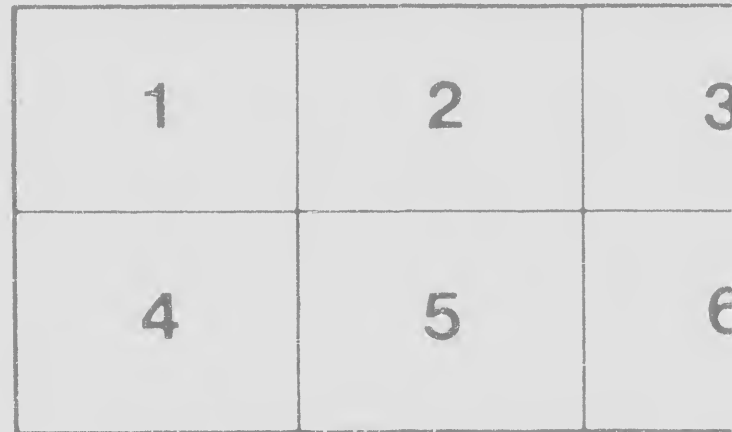
14X



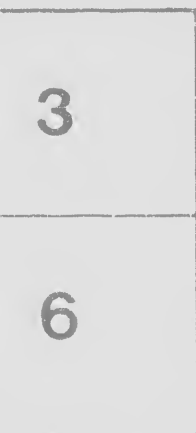
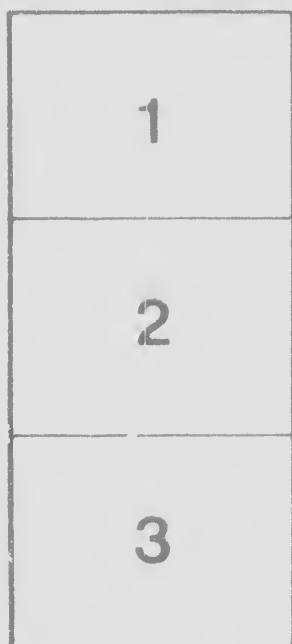
12X

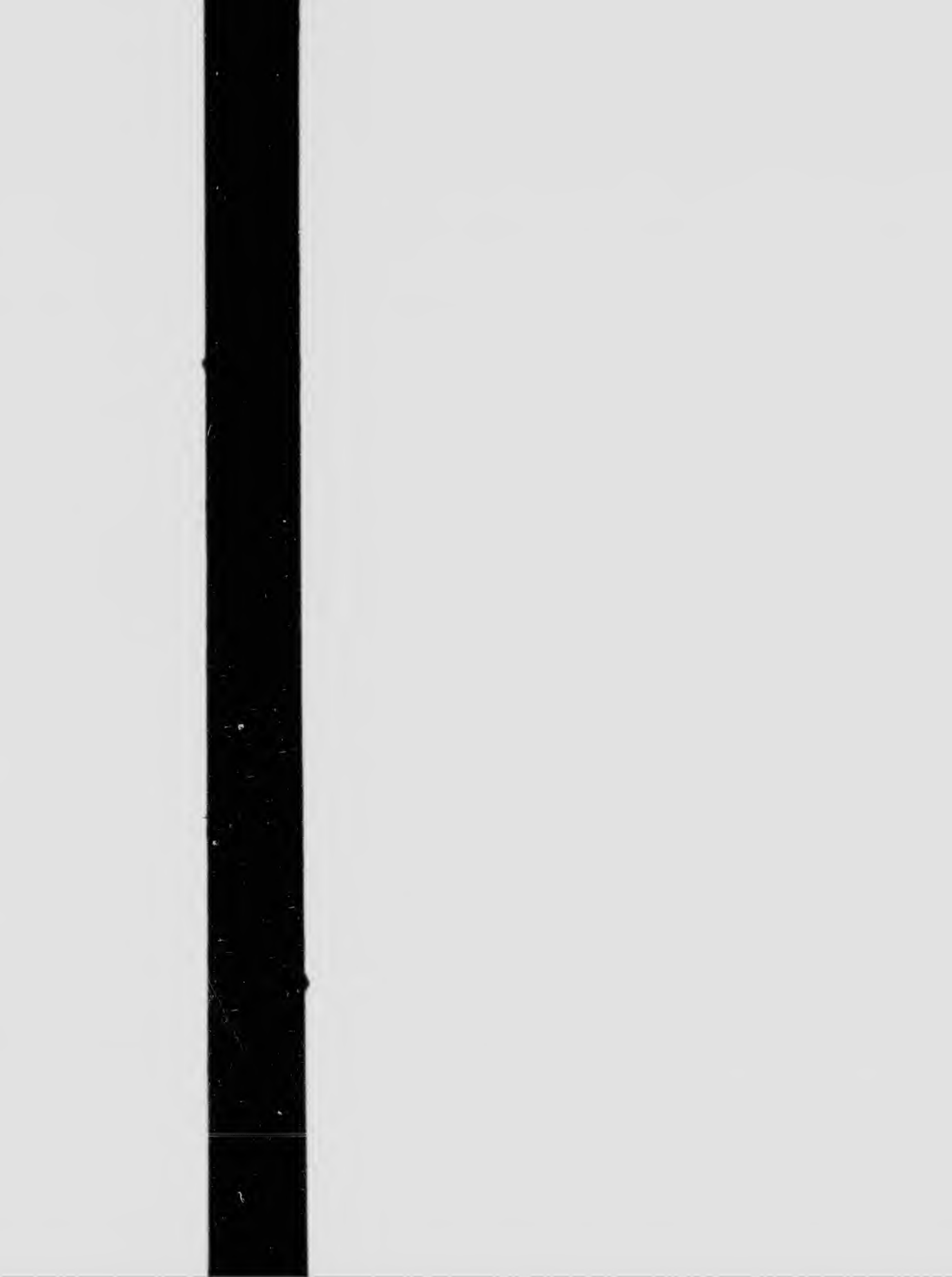
Maps, plates, charts, etc., may be filmed at different reduction ratios. Those too large to be entirely included in one exposure are filmed beginning in the upper left hand corner, left to right and top to bottom, as many frames as required. The following diagrams illustrate the method:

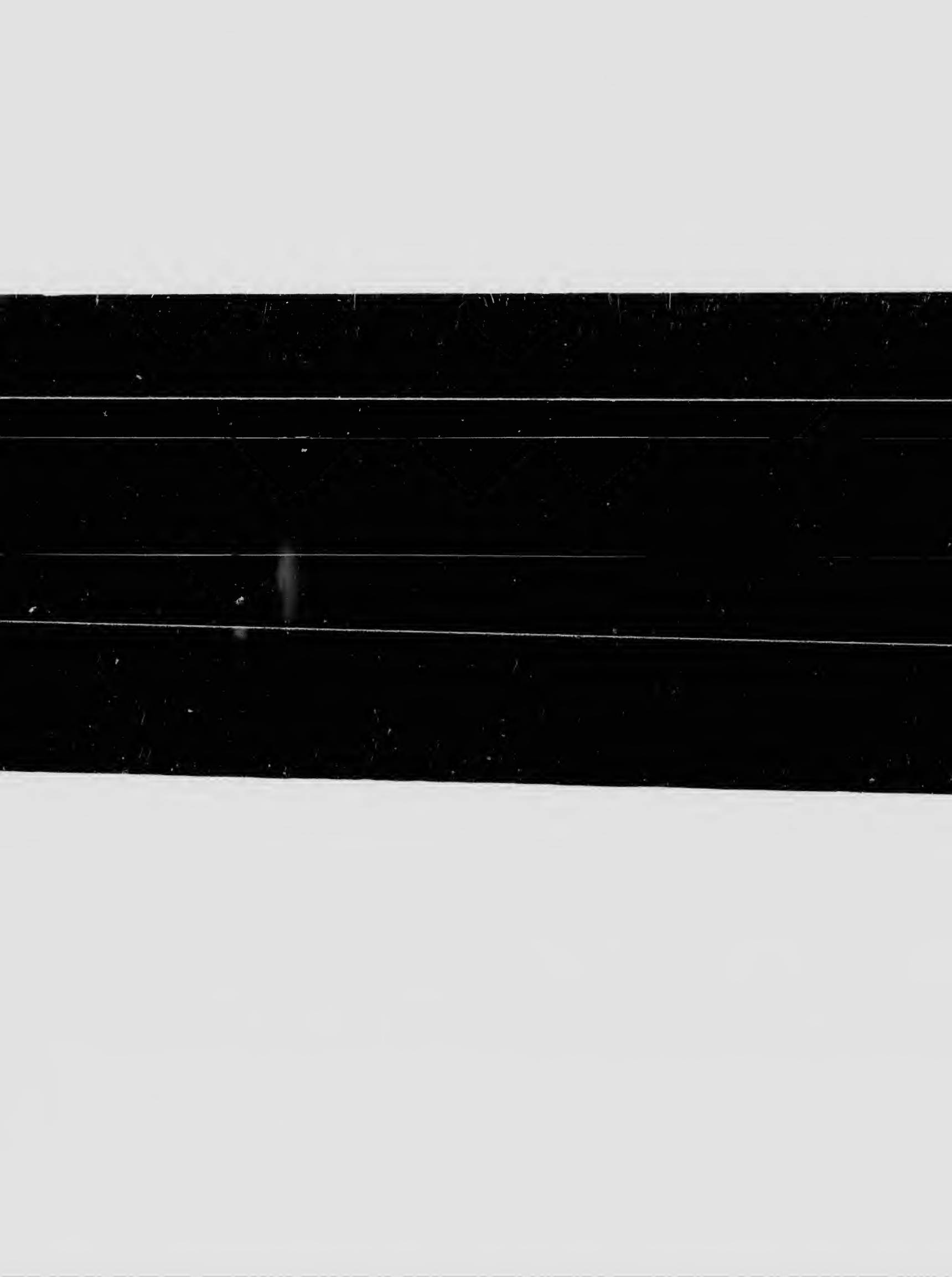
Les cartes
filmés à d
Lorsque le
reproduit
de l'angle
et de haut
d'images r
illustrent l



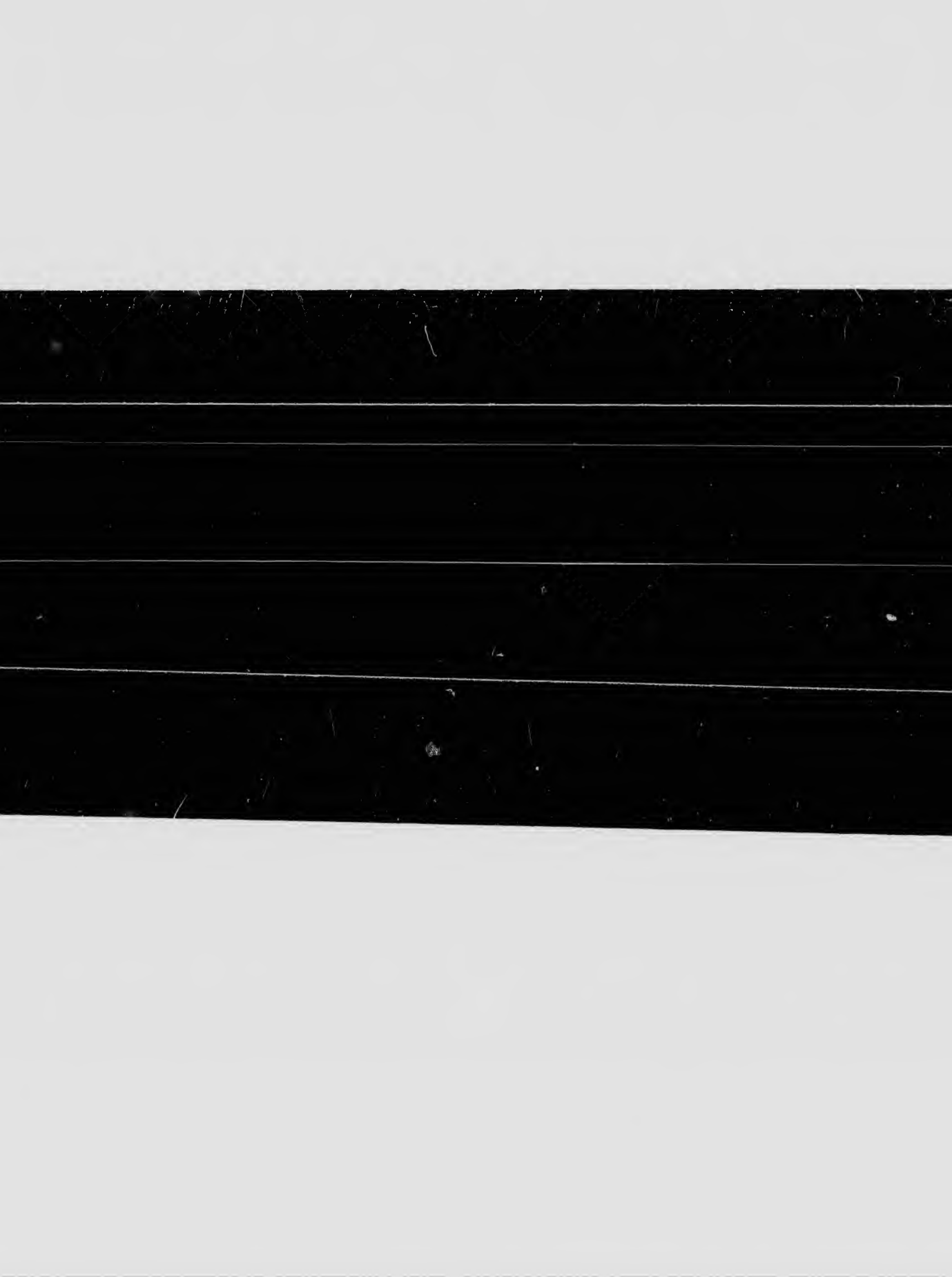
rtés, planches, tableaux, etc., peuvent être
à des taux de réduction différents.
e le document est trop grand pour être
uit en un seul cliché, il est filmé à partir
ngle supérieur gauche, de gauche à droite,
haut en bas, en prenant le nombre
es nécessaire. Les diagrammes suivants
ent la méthode.





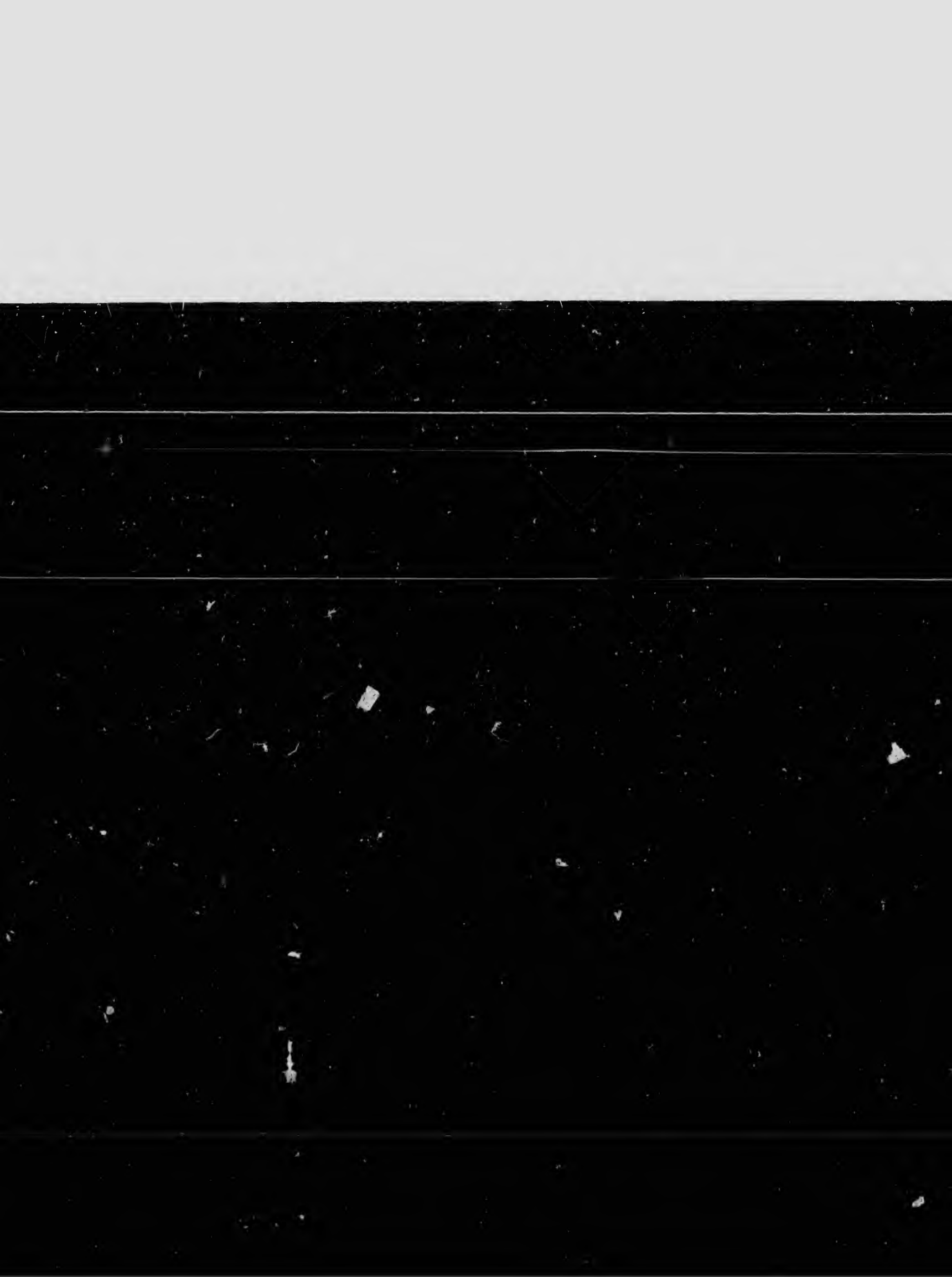


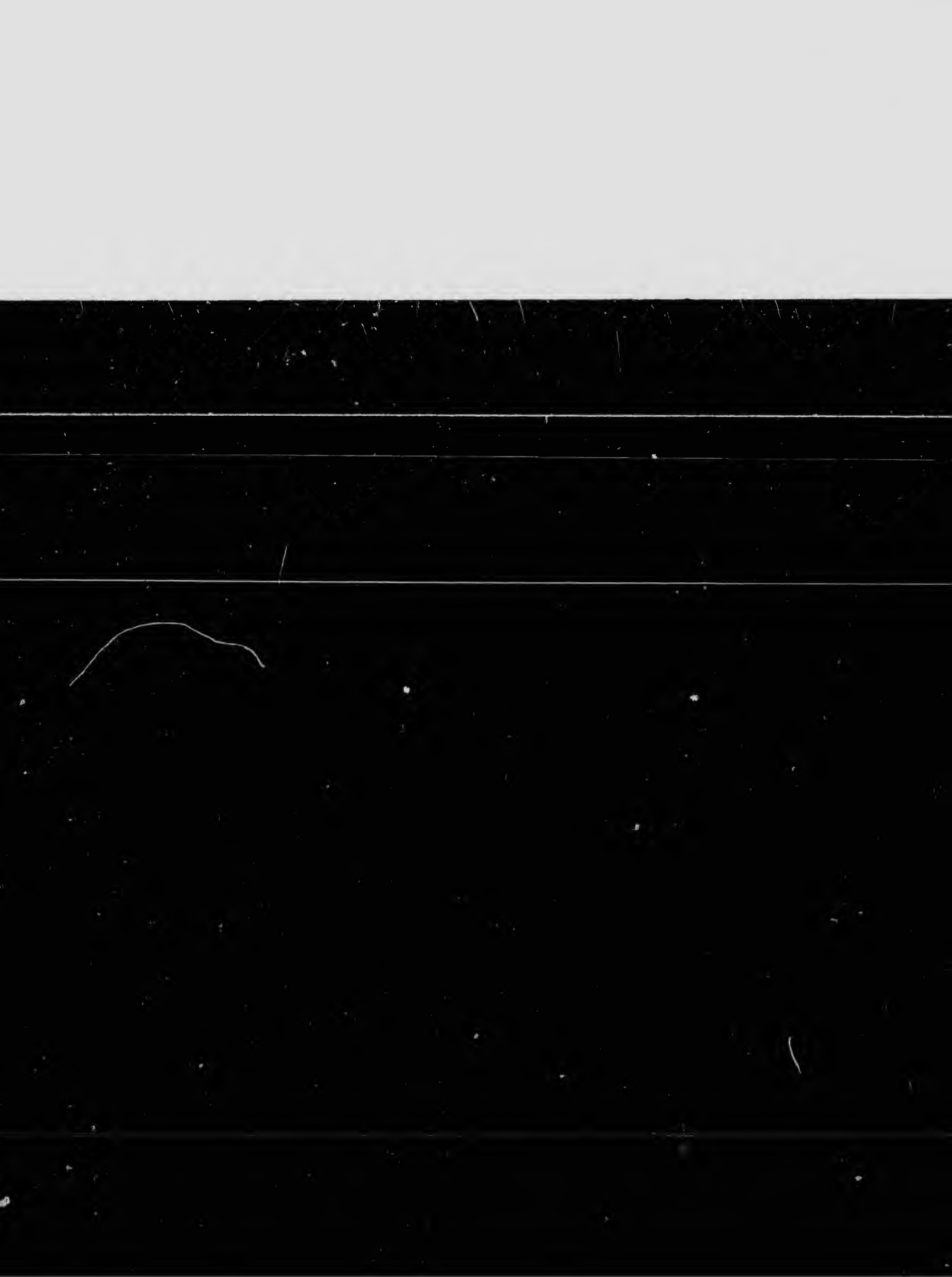


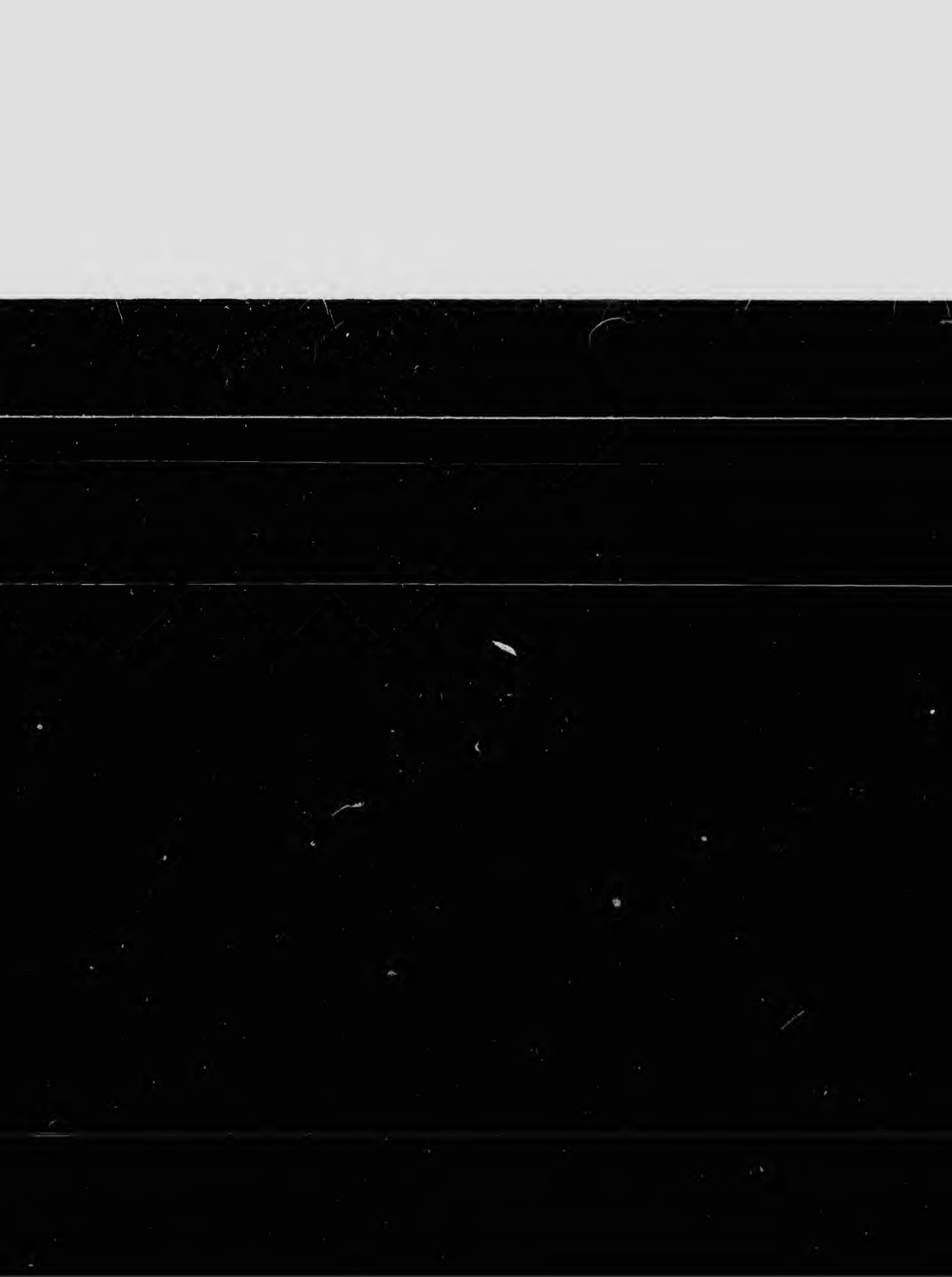




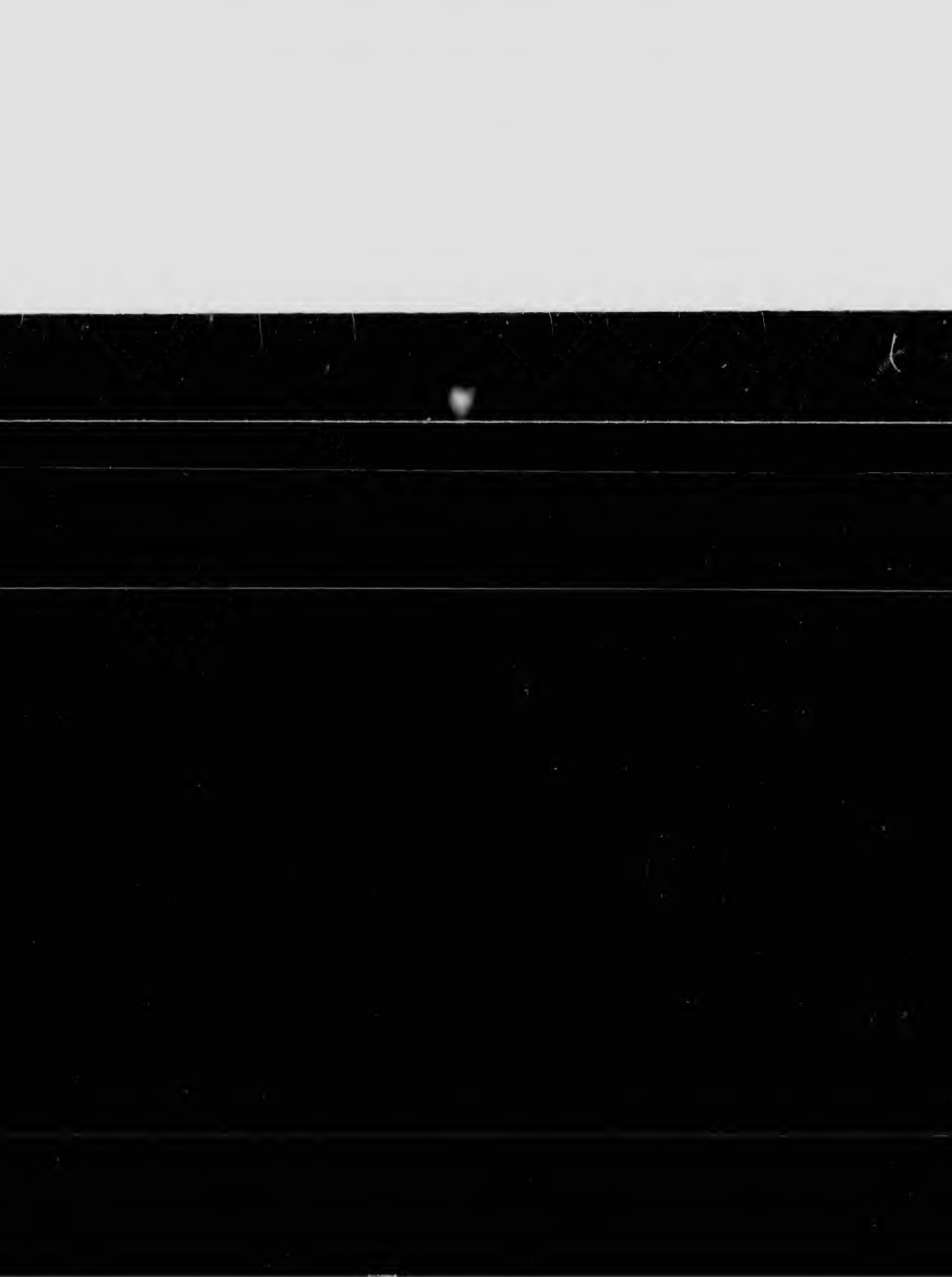


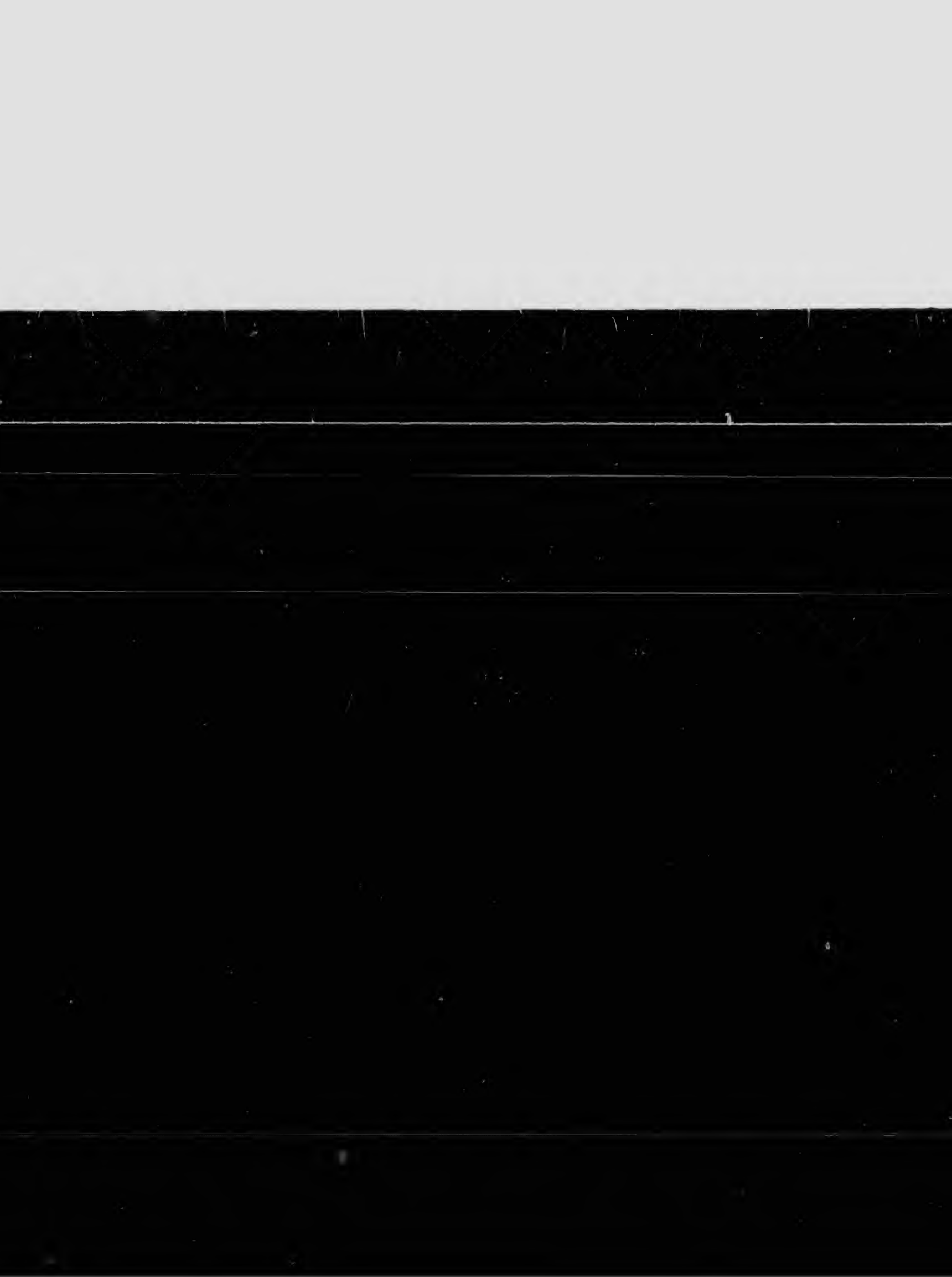


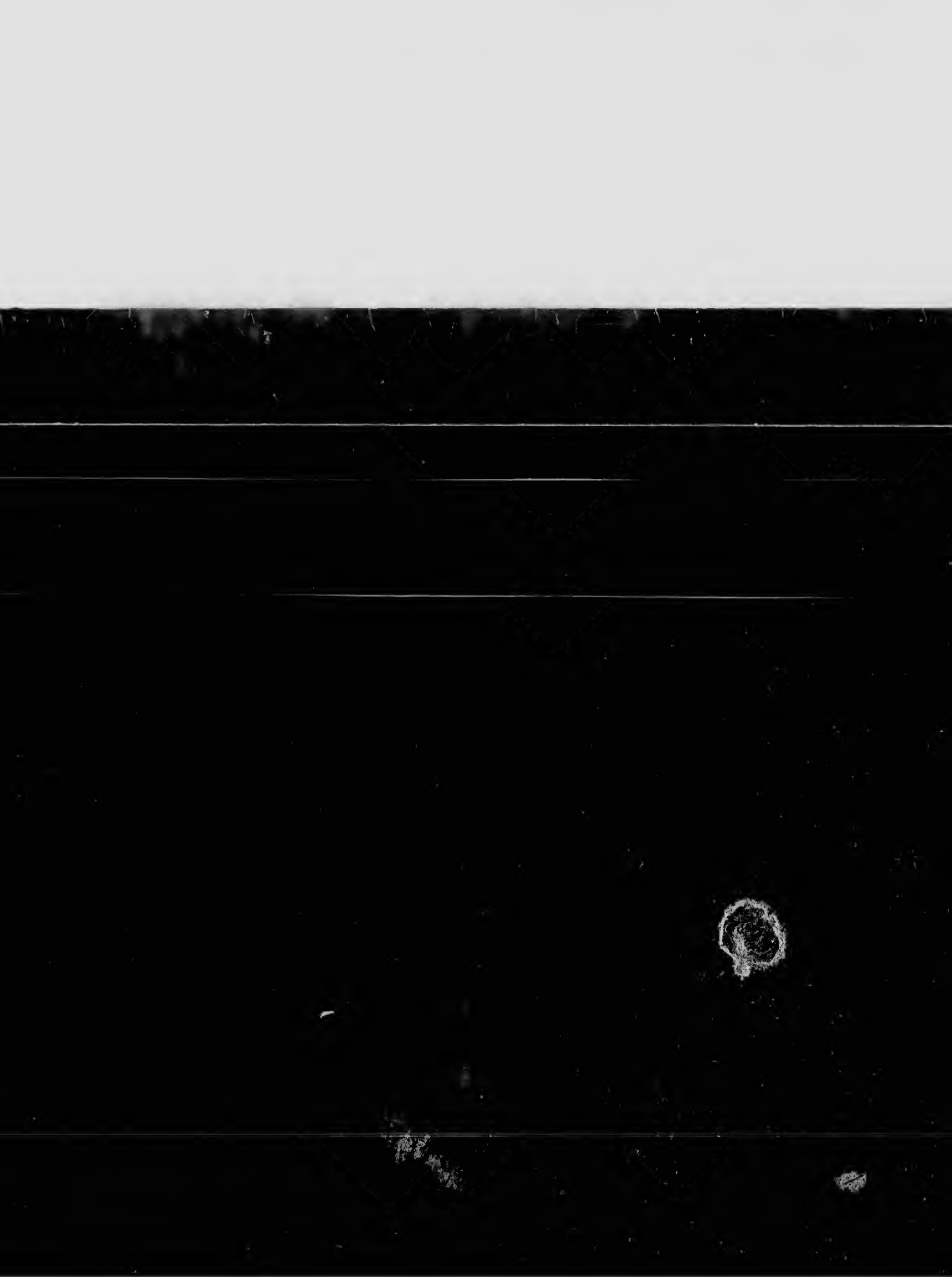












(COPY)

TO THE GOVERNORS OF CALEANS, GEORGIA, S.

N. HAMPSHIRE

SIR,

THE evasions of the preceding Embargo in
objects, and chiefly by vessels clearing out coastwise,
authorised the absolute detention of all vessels bound
tions of an intention to evade those laws. There being
be supplied with flour from their interior country, shi
picious, and proper subjects of detention.

Places on our sea-board which need supplies of flour by
may not suffer by the cautions we are obliged to use,
er you deem it necessary, that your present, or any fu
the trouble of giving your certificate in favor of any n
directed to the Collector of any port, usually exporti
bring it, for any quantity which you may deem necess
rior supplies, inclosing to the Secretary of the Treasur
certificate, as a check on the falsification of your signat
ply of the real wants of your citizens, and at the same
made a cover for the crimes against their country, whic
habit of committing. I trust too, that your Excellency
propose to give you, in that desire which you must
citizens, that inconveniences encountered cheerfully
ry, shall not be turned merely to the unlawful profits

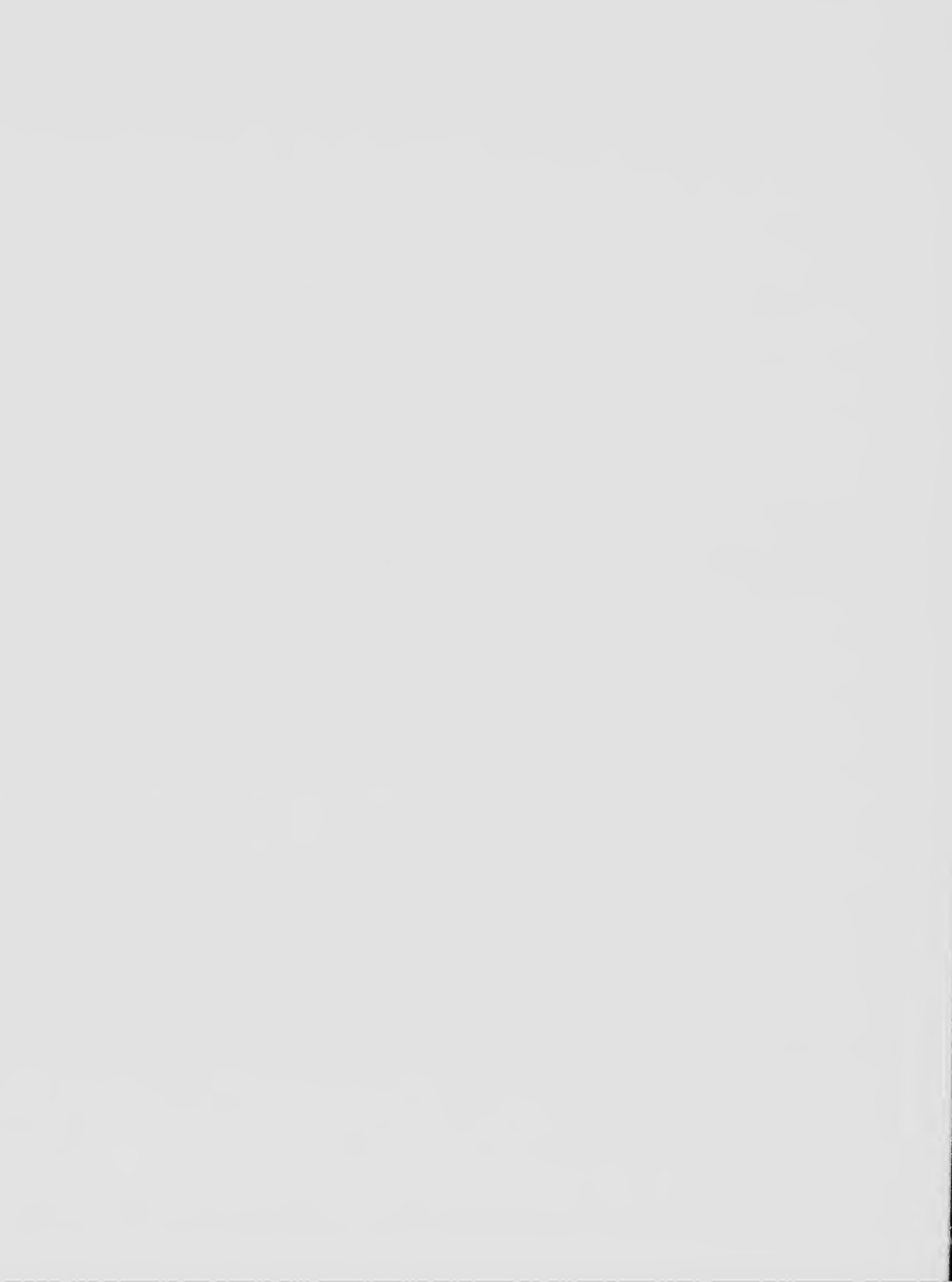
OPY:

S. CAROLINA, MASSACHUSETTS, AND

SHIRE.

WASHINGTON, MAY 6, 1861.

o laws went so far towards defeating their
ise, that Congress by their act of April 23,
und coastwise with cargoes exciting suspi-
eing few towns on our sea-coast which cannot
shipments of flour became generally sus-
is one of the low
r by sea, for its own consumption. That it
use, I request of your Excellency, whene-
ny future stock should be enlarged, to take
ny merchant in whom you have confidence,
porting flour from which he may choose an
ecessary for consumption, beyond your inter-
astery, at the same time, a duplicate of the
signature. In this way we may ensure a sup-
ore time prevent those wants from being,
which unprincipled adventurers are in the
ney will find an apology for the trouble I
must feel in coming out all out with my
lly by them for the interests of their coun-
dits of the most worthless part of society.

















for supplies, inclosing to the Secretary of the Treasury
certificate, as a check on the falsification of your signa-
ture, and at the same time, to give you a more com-
plete knowledge of the real wants of your citizens, and at the same
time, to make a cover for the crimes against their country, which
you have a habit of committing. I trust too, that your Excellency
propose to give you, in that desire which you must
have for the good of your citizens, that inconveniences encountered cheerfully by
you, shall not be turned merely to the unlawful profits
of your agents. I salute your Excellency with assurances of my high re-

...at the same time, a duplicate of the
signature. In this way we may ensure a sup-
...ere time prevent these wants from being
which unprincipled adventurers are in the
...ency will find an apology for the trouble I
...ust feel in common with all our w...dy
...ly by them for the interests of their coun-
...bits of the most worthless part of society.
...gh respect and consideration.

TH: JEFFERSON

















