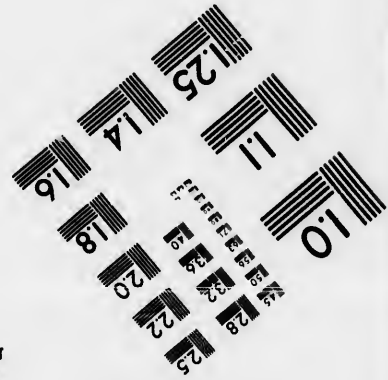
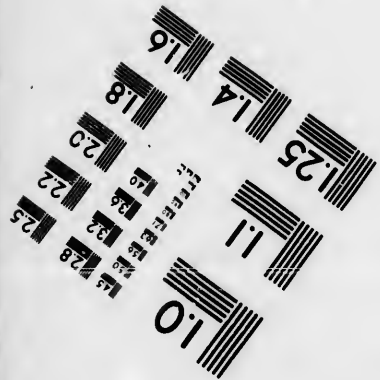
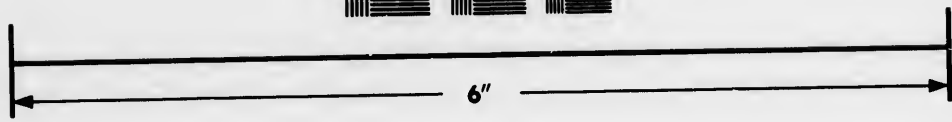
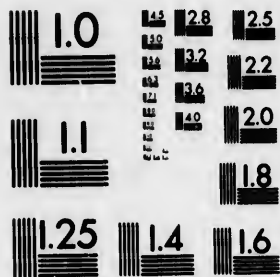


**IMAGE EVALUATION
TEST TARGET (MT-3)**



**Photographic
Sciences
Corporation**

23 WEST MAIN STREET
WEBSTER, N.Y. 14580
(716) 872-4503

1.8
2.0
2.2
2.5
2.8
3.2
3.6
4.0
4.5
5.0
5.6
6.3
7.1
8.0
9.0
10.0
11.2
12.5
14.0
16.0
18.0
20.0
22.5
25.0
28.0
32.0
36.0
40.0
45.0
50.0
56.0
63.0
71.0
80.0
90.0
100.0

**CIHM/ICMH
Microfiche
Series.**

**CIHM/ICMH
Collection de
microfiches.**



Canadian Institute for Historical Microreproductions / Institut canadien de microreproductions historiques

1.8
2.0
2.2
2.5
2.8
3.2
3.6
4.0
4.5
5.0
5.6
6.3
7.1
8.0
9.0
10.0
11.2
12.5
14.0
16.0
18.0
20.0
22.5
25.0
28.0
32.0
36.0
40.0
45.0
50.0
56.0
63.0
71.0
80.0
90.0
100.0

© 1985

Technical and Bibliographic Notes/Notes techniques et bibliographiques

The institute has attempted to obtain the best original copy available for filming. Features of this copy which may be bibliographically unique, which may alter any of the images in the reproduction, or which may significantly change the usual method of filming, are checked below.

L'institut a microfilmé le meilleur exemplaire qu'il lui a été possible de se procurer. Les détails de cet exemplaire qui sont peut-être uniques du point de vue bibliographique, qui peuvent modifier une image reproduite, ou qui peuvent exiger une modification dans la méthode normale de filmage sont indiqués ci-dessous.

- Coloured covers/
Couverture de couleur
- Covers damaged/
Couverture endommagée
- Covers restored and/or laminated/
Couverture restaurée et/ou pelliculée
- Cover title missing/
Le titre de couverture manque
- Coloured maps/
Cartes géographiques en couleur
- Coloured ink (i.e. other than blue or black)/
Encre de couleur (i.e. autre que bleue ou noire)
- Coloured plates and/or illustrations/
Planches et/ou illustrations en couleur
- Bound with other material/
Relié avec d'autres documents
- Tight binding may cause shadows or distortion
along interior margin/
La reliure serrée peut causer de l'ombre ou de la
distorsion le long de la marge intérieure
- Blank leaves added during restoration may
appear within the text. Whenever possible, these
have been omitted from filming/
Il se peut que certaines pages blanches ajoutées
lors d'une restauration apparaissent dans le texte,
mais, lorsque cela était possible, ces pages n'ont
pas été filmées.
- Additional comments:/
Commentaires supplémentaires:

- Coloured pages/
Pages de couleur
- Pages damaged/
Pages endommagées
- Pages restored and/or laminated/
Pages restaurées et/ou pelliculées
- Pages discoloured, stained or foxed/
Pages décolorées, tachetées ou piquées
- Pages detached/
Pages détachées
- Showthrough/
Transparence
- Quality of print varies/
Qualité inégale de l'impression
- Includes supplementary material/
Comprend du matériel supplémentaire
- Only edition available/
Seule édition disponible
- Pages wholly or partially obscured by errata
slips, tissues, etc., have been refilmed to
ensure the best possible image/
Les pages totalement ou partiellement
obscurcies par un feuillet d'errata, une pelure,
etc., ont été filmées à nouveau de façon à
obtenir la meilleure image possible.

This item is filmed at the reduction ratio checked below/
Ce document est filmé au taux de réduction indiqué ci-dessous.

10X	14X	18X	22X	26X	30X
<input type="checkbox"/>	<input type="checkbox"/>	<input type="checkbox"/>	<input type="checkbox"/>	<input checked="" type="checkbox"/>	<input type="checkbox"/>
12X	16X	20X	24X	28X	32X

The copy filmed here has been reproduced thanks to the generosity of:

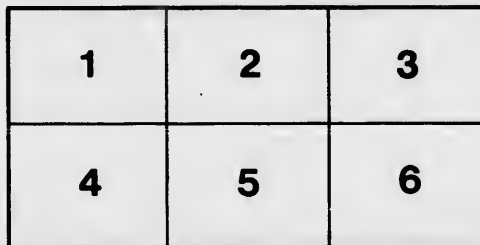
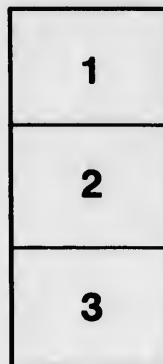
New Brunswick Museum
St. John

The images appearing here are the best quality possible considering the condition and legibility of the original copy and in keeping with the filming contract specifications.

Original copies in printed paper covers are filmed beginning with the front cover and ending on the last page with a printed or illustrated impression, or the back cover when appropriate. All other original copies are filmed beginning on the first page with a printed or illustrated impression, and ending on the last page with a printed or illustrated impression.

The last recorded frame on each microfiche shall contain the symbol \rightarrow (meaning "CONTINUED"), or the symbol ∇ (meaning "END"), whichever applies.

Maps, plates, charts, etc., may be filmed at different reduction ratios. Those too large to be entirely included in one exposure are filmed beginning in the upper left hand corner, left to right and top to bottom, as many frames as required. The following diagrams illustrate the method:



L'exemplaire filmé fut reproduit grâce à la générosité de:

New Brunswick Museum
St. John

Les images suivantes ont été reproduites avec le plus grand soin, compte tenu de la condition et de la netteté de l'exemplaire filmé, et en conformité avec les conditions du contrat de filmage.

Les exemplaires originaux dont la couverture en papier est imprimée sont filmés en commençant par le premier plat et en terminant soit par la dernière page qui comporte une empreinte d'impression ou d'illustration, soit par le second plat, selon le cas. Tous les autres exemplaires originaux sont filmés en commençant par la première page qui comporte une empreinte d'impression ou d'illustration et en terminant par la dernière page qui comporte une telle empreinte.

Un des symboles suivants apparaîtra sur la dernière image de chaque microfiche, selon le cas: le symbole \rightarrow signifie "A SUIVRE", le symbole ∇ signifie "FIN".

Les cartes, planches, tableaux, etc., peuvent être filmés à des taux de réduction différents. Lorsque le document est trop grand pour être reproduit en un seul cliché, il est filmé à partir de l'angle supérieur gauche, de gauche à droite, et de haut en bas, en prenant le nombre d'images nécessaire. Les diagrammes suivants illustrent la méthode.

Sirs,

During the past fortnight no permanent and favourable turn has occurred in business, nor is this a season when it is reasonable to expect it. However for several leading articles of import, where the decline had been great and rapid, such as Cotton, Sugar, and Corn, there has lately been more demand, and some re-action did ensue tho' not to any great extent, but sufficient at the time to check decline, and produce a little advance in price; so soon however as the consumers obtained a temporary supply, and withdrew from the market, a languor followed with a tendency again to recede, it is therefore probable no general movement in business can be expected until towards the close of the year, when a revival may reasonably be looked for, as most branches of Manufacture appear in a prosperous state, and have only been partially interfered with, when the raw material advanced too rapidly, or beyond what the consumers could afford to give, and at the same time secure to themselves an adequate return.

Our Cotton market continues in a very inactive state. The sales are small, whilst the supply of late has been rather on the increase. Last week private 11,460 bags and bales, and only 3120 bags and bales sold. During the present the import is 5107 packages, and the sales by public and

2950 bags of Boreas at 11d 1/4;

1970 " Orleans at 8 1/2 d 1/4;

1900 " Alabama &c. at 7 1/2 d 9/4 d, (60 at 7 1/2 d);

170 " Sea Island at 13d 1/4 1/2;

40 " Stained at 8 1/2 d 1/4;

1000 " Pernams at 10 1/2 d 1/4 1/2;

420 " Bahias at 9 1/2 d 1/4 1/2;

900 " Maranhams at 9 1/2 d 1/4 1/2;

At the commencement of the present week there was a more general inquiry, with the prospect of an increasing business, and sales were then effected in American descriptions at an advance of 1/4 d 1/2 lb. Subsequently the demand fell off, and the announcement of several public sales of Surats for yesterday served to check business and depress our prices, so that the market closes heavily, and with the loss of nearly the whole of the advance already noticed. It will be seen that a large portion of the Cotton offered by auction was withdrawn; those sold went off at a reduction of 1/4 d to 3/4 d on the prices previously obtained by private. With a market so unsettled and tantalizing both buyers and sellers lose confidence; and the state of our stock does not encourage the more sanguine. It now consists of 237,000 packages, of which 169,000 are American; against 240,500 bags and bales at the corresponding period last year, of which 183,000 were American. It should however be borne in mind that at this period last year there were large stocks of the raw material in the hands of consumers, and now but little remains in the interior, and this too with a return of comparatively low prices.—A good demand has been experienced for Tobacco; prices are more firm; this week the sales reach 200 hhds., and several purchases have been made on speculation.

For most articles of Colonial Produce a moderate demand has been experienced. British Plantation Sugar however has sold freely; 1500 hhds. having been disposed of during the week, and rather better prices realized; also 300 bags of good East India at 15s 1/2 per cwt. In Manila, Brazil, or Havannah, no transactions of moment are reported.—400 punche of Molasses have been sold, Demerara and Antigua at 2s 1/2 per cwt.—But a limited business is doing in Cocoa; 60 to 70 casks of Plantation have been purchased by the dealers without much change in price.—Small parcels of Pimento sold at 4d 1/4 d.—In Coffee or Ginger little has occurred.—Pepper declines in price, without a possibility of selling.—For Rum there has been little inquiry; 120 to 150 puncheons have been purchased at reduced prices.—There is just now but little demand for Rice. 200 bags of East India sold, Bombay at 14s, and Bengal at 17s per cwt. No good Carolina remains here for sale.—Little change can be noticed in our market for Hides. On Tuesday 18,000 East India Cow sold by auction, when dry salted ranged at 8 1/2 d to 9 1/2 d, and the dry sold from 6 1/2 d to 7 1/2 d, the damaged commanding proportionate rates; also 900 dry salted Brazils at 8 1/2 d, 130 New South Wales at 4 1/2 d, 200 salted Buenos Ayres at 5 1/2 d, 480 salted Barbadoes at 5 1/2 d, and 2000 Russian Kips for the sound 9 1/2 d to 9 3/4 d per lb were paid.

There has again been a good demand for Pot Ashes, the decline in price brings forward buyers more freely, so that the week's sales of Montreal reach 550 barrels at 22s 2/6 d for first, and 19s 6d per cwt. for second quality.—Pearls move off more slowly at 25s 3d per cwt.—In Querciton Bark retail sales only are making at our quotations.—A considerable business has been done in Dyewoods, more particularly in Logwood, the sales of Campeachy reach 650 tons at from 47 1/2 d to 47 1/2 d per ton; the market is now more steady, 85 tons of St. Domingo sold at 26 1/2 s, and 30 tons of Jamaica at 25 1/2 s per ton. A cargo of 200 tons of Cuba Fuel was offered by auction on Monday, when 30 tons went off at 29 1/2 d to 29 1/2 s, and the remainder subsequently at about 29 1/2 d per ton.—A few sales have been made in picked Lima Niteragwood at 24 to 25s, and Roots at 230 to 231 10s per ton; also of good Canwood at 219 10s per ton.—There has been more demand for Saltpetre, and rather lower prices have been accepted; 1500 to 1800 bags have changed hands during the week; and a little Nitrate of Soda sold at 29s per cwt.—In Safflower, Shell Lac, or Lac Dyo no business of moment is reported; 10 ceros of good Silver Cochineal sold at the reduced price of 8s 1/2 lb.—Sales are effecting in Indigo at a decline in proportion to that at London.—Some business has been done in Mediterranean Produce, say about 40 tons of Olive Oil at 260 for Gallipoli, & 255 10s for Sicily. Brimstone has been in good demand; considerable sales have been made and advanced prices again realized; for Sicily 41s 10s per ton has been paid, 1200 to 1400 bags of Shumac sold during the week, new Sicily at 18s 6d, Verona at 7s 9d 4s 1/2 d, and Trieste at 8s per cwt.—No change in Madler Roots. Most of the late imports of Valonia have changed hands, and an advance of 20s to 30s per ton is now required.

For Turpentine there has been a good demand, all the recent arrivals are now disposed of, the greater part on board and unsewn, thus shewing the ready disposition of consumers to purchase; the total sales reach about 3500 barrels at 12s 6d, and 12s 7d per cwt.—Rosin is again on the advance, but no change of moment has occurred in Spirits of Turpentine.—Tar continues very scarce; a parcel Archangel was offered by auction this week, from which 500 barrels sold at 14s 9d per barrel; and 14s 6d has been refused for the remainder.—Our market for Fish Oils continues very dull. A few small sales have been made in Pale Seal at 22s, and of Newfoundland Cod at 24s per tun; but at these rates no large buyers appear.—Lined Oil is much wanted, 2s 5d a 2d 1/2 gallon is freely paying; with the prospect of further advance.—No change of moment in Pale Rape; there are few sellers at 2s 9d, and buyers at 2s 9d per gallon.—A moderate business is doing in Palm Oil at our quotations; the consumers are kept well stocked by purchases made to arrive.

There was more demand for Tallow a few days ago, and rather higher prices were then realized; it has again fallen off; 47s 4 1/2 d per cwt. is now paying in small parcels for Yellow Candle; South American has been sold at 43s 4 1/2 d per cwt.—In the price of Hemp there is little variation. St. Petersburg clean is going off at 25s 1/2 to 25s 10s per ton; at these rates importers are sellers. A general impression prevails that we shall experience an extensive demand to supply other markets, as likewise for export before the approach of next year's import season.—In London it is understood that the low price is attracting the attention of speculators.—Though the consumption of Flax is extending, prices have not improved in this market, 24s 1/2 per ton was the last price paid for Riga P T R.—Our Timber market has been flat for the past two weeks, and the price of Pine declined 1/4 d to 3/4 d per foot; during the past few days the demand revived a little; at the reduction noticed several cargoes have been sold, say of Quebec at about 18 1/2 d, St. John's as in quality at from 19d to 20d per foot. Yesterday another cargo, consisting of about equal portions of Red & Yellow Pine and Birch sold all round at 19d, with Planks at 2d, and several sales of Nova Scotia Planks have been made at 2 1/2 d to 3d per foot of 2 inches. Hardwood is plentiful and lower, and has been purchased at 17d to 18d per foot.—The price of Quebec Oak does not mend; a good parcel sold this week at 2s 4d per foot.—No recent change of consequence has occurred in the price of Baltic Timber or Deals; the dealers are wanting to buy middling Timber at 2s 1/2 per foot, but have not yet succeeded. Staves still go off freely, import specifications of Quebec measurement have been selling at 27l to 27 1/2 l per mille, and puncheon at our quotations.

There has been more activity of late in our Corn Market, extensive sales have been effected to be shipped off into the interior, and purchases made of good Irish Red Wheat at 6s 6d to 6s 10d per 70lb to hold over on speculation. In the course of the past week Wheat went off at an advance of 2d to 3d per bushel, but at our market notwithstanding there is a good consumption, but a moderate demand was experienced, prices did not improve, but were with difficulty sustained, notwithstanding there is a good consumption inquiry for Irish Wheat. Such also is the case for Oats. The prevailing opinion however is that the extreme of depression is passed, and that a healthy trade may hereafter be looked for.—For Flour under the lock a demand has of late been experienced for export; old and sour at 18s 1/2 s, old sweet at 22s 2/3 s, and 30s for parcels just landed; 20s per cwt. has also been given for Canadian in bond; the latter is taken cautiously for export, fearing it may go sour; but during the present week the purchases for export have greatly fallen off. A cargo of Rostock Wheat has however been sold in bond at 4s 1/2 per 70lb for shipment to Nova Scotia. Very little business has of late been done in either Canada Wheat or Flour.—There are numerous inquiries for old Sowing Flaxseed, it would sell high if there had been any here, probably at 70s per hhd. A large Sowing is expected next spring.—No transactions in Cloverseed have lately occurred in this market; good new English is selling in London at 60s 6 1/2 s per cwt. so that any thing like high prices are not likely to be soon realized.—Lined is very scarce, and would readily command our advanced quotations annexed.

We remain, respectfully, Sirs, your most obedient servants,

DANIEL BUCHANAN & SON.

* The Duties on Grain, &c. for the ensuing Week are as follows.—On Wheat 33s 8d, on Oats 18s 3d, on Rye 16s 9d, on Barley and Indian Corn 16s 10d, on Beans 14s 0d, on Pease 11s 0d per Imperial Quarter, and on Flour 20s 3d per Barrel.

SALES ADVERTISED.

Monday, 28th October
1064 bags } Black Pepper
601 pockets }
50 cases Turkey Gum Arabic
Wednesday, 30th
20 tons Valonia

Wednesday, 30th
107 bags Indian Rubber
10 hhds. Isinglass
59 serons Cochineal
25 cases Yellow Berries
1000 cases Gum Tragacanth

Wednesday, 30th
34 chests Mull Maddor
50 tons Lima Niteragwood
Thursday, 31st
593 Elephant Teeth

Friday, 1st November
1500 bales Surat Cotton
230 bags Sicily Shumac
200 casks Brown Tartar
22 casks Argols
10 bags Galls

PRICES CURRENT AT LIVERPOOL, ON SATURDAY, 26th OCTOBER, 1833.

COTTON, per lb		DUTIES.		IMPORTS.		SUGAR, per cwt.		DUTIES.		IMPORTS.	
Upland, ordinary to fair	0 8 a 9 1			from 1 Jan. to 31 Oct.	from 19 to 25 Oct.	B. P. Dry brown	s. d. c. d. 0	Duty included	from 1 Jan. to 31 Oct.	from 19 to 25 Oct.	
good fair to fine	0 9 a 0 11			79670	2476	mid. to good mid	58 0 a 62 0	4s per cwt.	hhd.	144	
Orleans, ordinary to fair	0 8 a 0 9 1					good bright to fine	63 0 a 67 0		46700		
good fair to fine	0 10 a 1 0					Mauritius, brown and yellow	55 0 a 62 0		554	129	
Mohile and Alabama	0 7 1/2 a 10					fine yellow	65 0 a 67 0		7450	80	
S. Island, fine	1 6 a 2 0					Havannah, brown	35 0 a 37 0		Warehoused & sold free of duty.		
good fair to good	1 3 1/2 a 1 4					yellow	38 0 a 39 0				
ordin. to mid.	1 1 a 1 2					white	31 0 a 33 0				
stained	0 9 a 1 1					Brazil, brown	29 0 a 32 0				
Pernambuco	0 10 a 1 0					yellow	33 0 a 34 0				
Maraham	0 9 1/2 a 0 11 1/2					white	26 0 a 28 0				
Bahia	0 9 1/2 a 0 10 1/2					East India, white	66 0 a 68 0				
Damara	0 10 a 0 12					MOLASSES, West India	25 0 a 28 0				
Surat and Madras	0 5 1/2 a 0 7 1/2					COFFEE, Jam-triags & veyord	0 0 a 0 0				
Bengal	None here					ordinary & fine ord.	92 0 a 99 0				
Egyptian	1 0 a 1 2					mid. & good mid.	100 0 a 114 0				
						fine mid. and fine	115 0 a 123 0				
						Dutch, triage & veyord.	68 0 a 78 0				
						ord. and fine ord.	80 0 a 90 0				
						mid. & good mid.	91 0 a 100 0				
						fine mid. and fine	101 0 a 104 0				
						St. Domingo	63 0 a 67 0				
						Brazil	60 0 a 64 0				
						Mocha	80 0 a 88 0				
						Leeward, common	1 11 a 2 0				
						10 to 20 cent.	2 2 a 2 8				
						BRANDY, Cognac, par imp. gallon	3 0 a 3 6				
						common	3 6 a 2 10				
						GENEVA	3 8 a 3 10				
						COCOA, Trinidad, per cwt.	50 0 a 60 0				
						Brazil	23 0 a 25 0				
						DYEWOODS, per ton,					
						Logwood, Jamaica	5 10 a 6 0				
						Campeachy	7 5 a 0 1				
						Honduras	6 0 a 6 5				
						Fustic, Tampico	7 10 a 8 0				
						Spanish com.	6 10 a 7 0				
						Cuba	9 10 a 10 0				
						Nicaragua wood, sold	18 0 a 21 0				
						Lima	22 0 a 24 0				
						Camwood	0 18 0 a 20 0				
						PIMENTO, per lb.	0 4 a 0 4 1/2				
						GINGER, Barbado, per cwt. la bond	65 0 a 75 0				
						Bengal	30 0 a 40 0				
						SALTPETRE, rough, E.I. per cwt.	34 0 a 41 0				
						South America	27 0 a 29 0				
						HIDES, Buenos Ayres, per lb.	0 7 1/2 a 0 11				
						Do.	0 4 1/2 a 0 5 1/2				
						Brazil, dry salted	0 5 1/2 a 0 6				
						B. A. Horse, dry per hide	9 0 a 11 0				
						American, salted, per lb.	0 4 1/2 a 0 4 3/4				
						SAFFLOWER, Bengal, good & fine	7 10 a 11 10				
						Bombay	4 0 a 5 0				
						SHELL LAC, orange	130 0 a 150 0				
						liver	90 0 a 120 0				
						TURMERIC, Bengal	15 0 a 18 0				
						COCHINEAL, silver	7 9 a 8 0				
						black	8 9 a 9 3				
						INDIGO, E. I. purple & violet	7 0 a 8 0				
						blue & fine violet	7 0 a 7 6				
						consumers	5 0 a 6 0				
						Caracca & Guatimala	4 6 a 7 0				
						HEMP, Petersburg, clean, per ton	25 0 a 25 10				
						Riga Rhine	26 0 a 26 10				
						East India, Bombay brown	10 a 15 10				
						Jute	14 0 a 15 0				
						TALLOW, Yellow Candle, per cwt.	47 0 a 47 6				
						South American	43 0 a 44 0				
						FLAX, Irish, per ton	40 0 a 45 0				
						St. Petersburg, 12-head	44 0 a 48 0				
						Dutch	45 0 a 50 0				
						OILS, Olive, Gallip. perton, l. M.	60 0 a 60 0				
						Sicily	65 0 a 68 0				
						Pale Seal	24 0 a 25 0				
						Cod	24 0 a 24 0				
						Palm, per cwt.	31 0 a 31 10				
						Linseed, per gallon	2 5 a 2 6				
						Rape, Pale, do.	2 8 a 2 9				
						Turpentine, per cwt.	40 0 a 41 0				
						SHUMAC, Sicily, per cwt.	12 6 a 13 6				
						Verona	7 3 a 7 6				
						BRIMSTONE, rough, Sicily, per ton	13 0 a 15 10				
						LEMON JUICE, concen. per deg.	0 1 a 0 1 1/2				
						VALONIA, Smyrna, per ton	14 10 a 17 0				
						MADDER ROOTS, French, per cwt.	53 0 a 64 0				
						Smyrna	60 0 a 60 0				
						CREAM OF TARTAR, Venet. per cwt.	62 0 a 64 0				
						GUM SENEGAL	74 0 a 77 0				

The duty on Foreign HARDWOOD, in B. S. is 2s 6d; Colonial 5s; on Foreign OAK and PINE, in B. S. 2s. Colonial 10s per load of 50 Cubic Feet.—Foreign DEALS above 7 inches in width, not exceeding 10 feet in length, and 1 1/2 inch thick B. S. 16s 6d; not above 16 feet long, and 3 1/2 inch thick, B. S. £19; Colonial 40s; Foreign not above 9 feet long, and 2 1/2 inch in thickness, B. S. £22 Colonial 50s @ 120 Deals.

POINTS
 from
 19 to
 Oct.
 31 Oct.

	144
	139
	90
	35
	35
	-
	-
	908
	-
	1133
	822
	81
	-
	-
	1849
	-
	11061
	-
	-
	63
	83
	522 bdls
	1981
	-
	3440 bdls
	150
	-
	124
	559
	80
	-
	83
	314
	26
	-

exceeding
 B. S. 22

