

**CIHM
Microfiche
Series
(Monographs)**

**ICMH
Collection de
microfiches
(monographies)**



Canadian Institute for Historical Microreproductions / institut canadien de microreproductions historiques

© 1995

Technical and Bibliographic Notes / Notes technique et bibliographiques

The Institute has attempted to obtain the best original copy available for filming. Features of this copy which may be bibliographically unique, which may alter any of the images in the reproduction, or which may significantly change the usual method of filming are checked below.

- ☒ Coloured covers / Couverture de couleur
- ☐ Covers damaged / Couverture endommagée
- ☐ Covers restored and/or laminated / Couverture restaurée et/ou pelliculée
- ☐ Cover title missing / Le titre de couverture manque
- ☐ Coloured maps / Cartes géographiques en couleur
- ☒ Coloured ink (i.e. other than blue or black) / Encre de couleur (i.e. autre que bleue ou noire)
- ☒ Coloured plates and/or illustrations / Planches et/ou illustrations en couleur
- ☐ Bound with other material / Relié avec d'autres documents
- ☐ Only edition available / Seule édition disponible
- ☐ Tight binding may cause shadows or distortion along interior margin / La reliure serrée peut causer de l'ombre ou de la distorsion le long de la marge intérieure.
- ☐ Blank leaves added during restorations may appear within the text. Whenever possible, these have been omitted from filming / Il se peut que certaines pages blanches ajoutées lors d'une restauration apparaissent dans le texte, mais, lorsque cela était possible, ces pages n'ont pas été filmées.
- ☐ Additional comments / Commentaires supplémentaires:

L'Institut a microfilmé le meilleur exemplaire qu'il lui a été possible de se procurer. Les détails de cet exemplaire qui sont peut-être uniques du point de vue bibliographique, qui peuvent modifier une image reproduite, ou qui peuvent exiger une modifications dans la méthode normale de filmage sont indiqués ci-dessous.

- ☐ Coloured pages / Pages de couleur
- ☐ Pages damaged / Pages endommagées
- ☐ Pages restored and/or laminated / Pages restaurées et/ou pelliculées
- ☒ Pages discoloured, stained or foxed / Pages décolorées, tachetées ou piquées
- ☒ Pages detached / Pages détachées
- ☒ Showthrough / Transparence
- ☐ Quality of print varies / Qualité inégale de l'impression
- ☐ Includes supplementary material / Comprend du matériel supplémentaire
- ☐ Pages wholly or partially obscured by errata slips, tissues, etc., have been refilmed to ensure the best possible image / Les pages totalement ou partiellement obscurcies par un feuillet d'errata, une pelure, etc., ont été filmées à nouveau de façon à obtenir la meilleure image possible.
- ☐ Opposing pages with varying colouration or discolourations are filmed twice to ensure the best possible image / Les pages s'opposant ayant des colorations variables ou des décolorations sont filmées deux fois afin d'obtenir la meilleur image possible.

This item is filmed at the reduction ratio checked below/
Ce document est filmé au taux de réduction indiqué ci-dessous.

10X	14X	18X	22X	26X	30X														
<input type="checkbox"/>	<input type="checkbox"/>	<input type="checkbox"/>	<input checked="" type="checkbox"/>	<input type="checkbox"/>	<input type="checkbox"/>	<input type="checkbox"/>	<input type="checkbox"/>	<input type="checkbox"/>	<input type="checkbox"/>	<input type="checkbox"/>	<input type="checkbox"/>	<input type="checkbox"/>	<input type="checkbox"/>	<input type="checkbox"/>	<input type="checkbox"/>	<input type="checkbox"/>	<input type="checkbox"/>	<input type="checkbox"/>	<input type="checkbox"/>
	12X	16X	20X	24X	28X	32X													

The copy filmed here has been reproduced thanks to the generosity of:

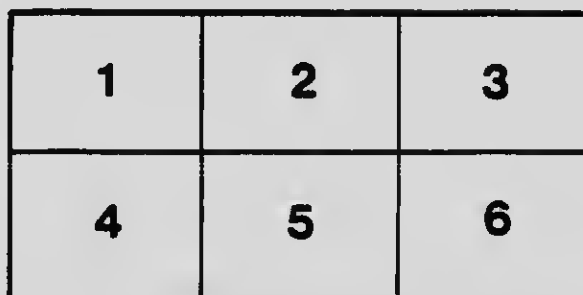
National Library of Canada

The images appearing here are the best quality possible considering the condition and legibility of the original copy and in keeping with the filming contract specifications.

Original copies in printed paper covers are filmed beginning with the front cover and ending on the last page with a printed or illustrated impression, or the back cover when appropriate. All other original copies are filmed beginning on the first page with a printed or illustrated impression, and ending on the last page with a printed or illustrated impression.

The last recorded frame on each microfiche sheet contains the symbol \rightarrow (meaning "CONTINUED"), or the symbol ∇ (meaning "END"), whichever applies.

Maps, plates, charts, etc., may be filmed at different reduction ratios. Those too large to be entirely included in one exposure are filmed beginning in the upper left hand corner, left to right and top to bottom, as many frames as required. The following diagrams illustrate the method:



L'exemplaire filmé fut reproduit grâce à la générosité de:

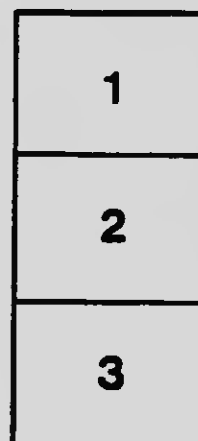
Bibliothèque nationale du Canada

Les images suivantes ont été reproduites avec le plus grand soin, compte tenu de la condition et de la netteté de l'exemplaire filmé, et en conformité avec les conditions du contrat de filmage.

Les exemplaires originaux dont la couverture en papier est imprimée sont filmés en commençant par le premier plat et en terminant soit par la dernière page qui comporte une empreinte d'impression ou d'illustration, soit par le second plat, selon le cas. Tous les autres exemplaires originaux sont filmés en commençant par la première page qui comporte une empreinte d'impression ou d'illustration et en terminant par la dernière page qui comporte une telle empreinte.

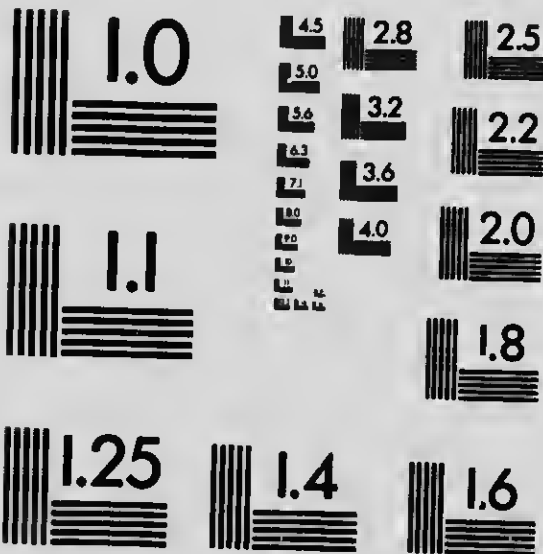
Un des symboles suivants apparaît sur la dernière image de chaque microfiche, selon le cas: le symbole \rightarrow signifie "A SUIVRE", le symbole ∇ signifie "FIN".

Les cartes, planches, tableaux, etc., peuvent être filmés à des taux de réduction différents. Lorsque le document est trop grand pour être reproduit en un seul cliché, il est filmé à partir de l'angle supérieur gauche, de gauche à droite, et de haut en bas, en prenant le nombre d'images nécessaire. Les diagrammes suivants illustrent la méthode.



MICROCOPY RESOLUTION TEST CHART

(ANSI and ISO TEST CHART No. 2)



APPLIED IMAGE Inc

1653 East Main Street
Rochester, New York 14609
(716) 482 - 0300 - Phone
(716) 288 - 5989 - Fax



Eleventh Avenue, looking East, Regina, Saskatchewan

Read, on page 54, description of Regina and statement of Industrial Opportunities offering.
The Secretary of the Regina Board of Trade invites correspondence.

Opportunities in Saskatchewan

1917

Containing Extracts from
Horton's Annual



Canadian Provincial Booklets
(see over)

Printed in Canada

Heaton's Standard Publications

THE CANADIAN PROVINCIAL BOOK-LETS are revised every year, are published for the Canadian Provincial Governments, are absolutely reliable, contain no unnecessary words, have been designed to fit easily into a pocket or an envelope, can be mailed with ordinary correspondence and give precisely the information wanted by intending settlers, travellers, investors, manufacturers and others who wish to extend their business. *Together they form the only uniform series of publications covering each Province in Canada.*

APPLY FOR FREE COPIES

To the Agents of the Provinces in London or to the Minister of Agriculture of each Province as follows:

Heaton's Alberta Booklet.....	at Edmonton, Alta.
" Brit. Columbia Booklet.....	" Victoria, B.C.
" Manitoba Booklet.....	" Winnipeg, Man.
" New Brunswick Booklet.....	" Fredericton, N.B.
" Nova Scotia Booklet.....	" Halifax, N.S.
" Ontario Booklet.....	" Toronto, Ont.
" Pr. Ed. Island Booklet.....	" Charlottetown, P.E.I.
" Quebec Booklet.....	" Quebec, Que.
" Saskatchewan Booklet.....	" Regina, Sask.

Heaton's Agency, Toronto, Canada

Copyright by Ernest Heaton
Toronto, 1917

OPPORTUNITIES

— IN —

SASKATCHEWAN

General Information

AREA AND PHYSICAL FEATURES.—AREA. The total area including land and water is 251,700 square miles—390 miles broad and 760 miles North and South; i.e., 10,400 sq. miles larger than Austria-Hungary.

AREA IN CULTIVATION. Out of the total land area of 155,092,480 acres, the estimated area under cultivation is less than ten million acres—less than ten per cent.

PRAIRIES. The Southern part of the province is more or less gently rolling prairie, generally bare of trees, and is composed of the western part of the second and eastern part of the third prairie steppe.

PARK LANDS. To the north the prairies are interspersed with "huffs" of birch and poplar, and there are numerous lakes and creeks.

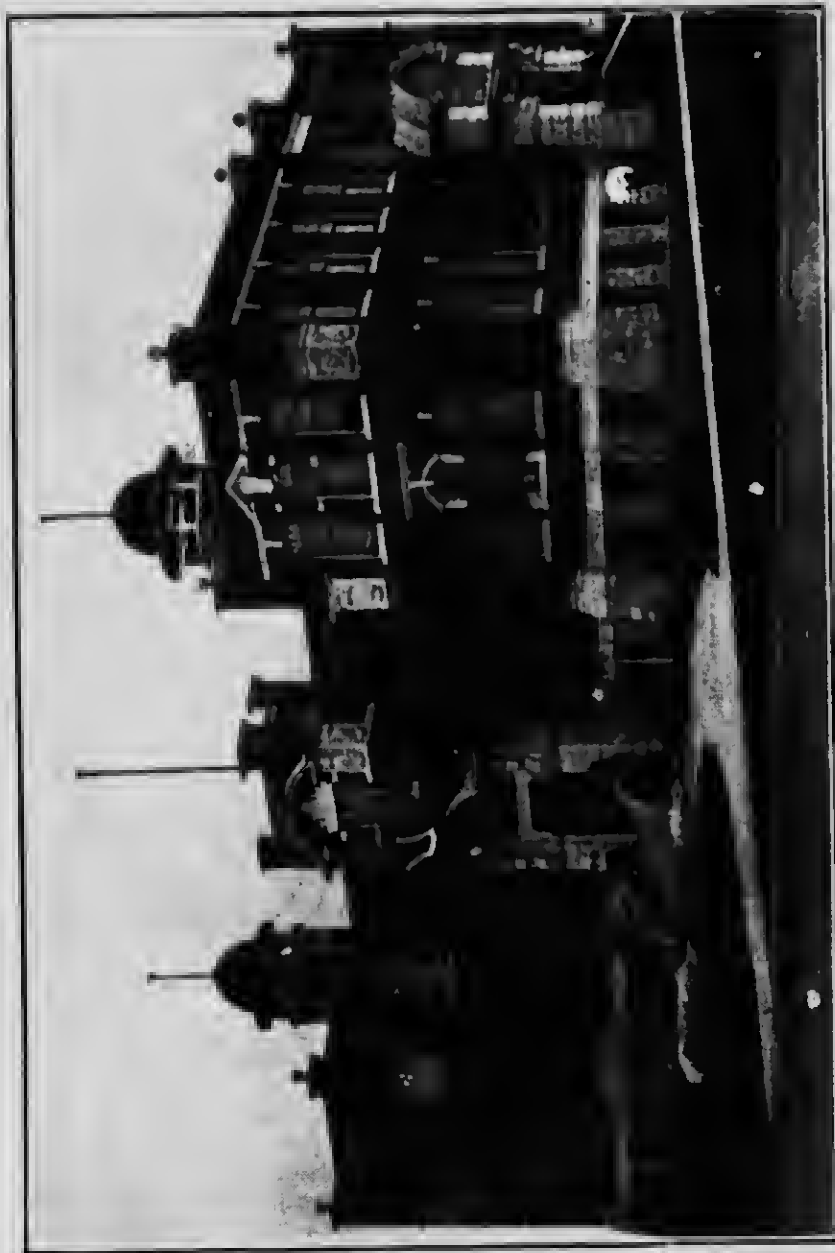
FORESTS. Above the prairies are extensive forests thinning off towards the northern boundary. See under Forests.

LATITUDE. The British Isles lie in the same latitude as the Province of Saskatchewan. Denmark, the Netherlands, Belgium, the greater part of Germany and about half of Russia, are as far north as Regina. Edinburgh is farther north than any of the settled parts of Saskatchewan. Petrograd, Russia and Christiania, Norway, are in the same northern latitude as the northern boundary of Saskatchewan.

LAKES. The lakes in Saskatchewan of more than 100,000 acres area are as follows:

Area in Acres		Area in Acres	
Reindeer (part)...	1,473,120	Buffalo.....	180,000
Athabasca (part)...	1,152,480	Dore.....	155,000
Wollaston.....	580,000	Ile à la Crosse...	120,000
Cree.....	260,000	Cumherland....	106,000
La Plonge.....	245,000	Quill.....	140,000
La Rouge.....	220,000		

RIVERS. The province is traversed by the North and South Saskatchewan Rivers. In the farthest north is the Churchill River, emptying into the Hudson Bay; in the centre and south the Qu'Appelle and Souris Rivers.



A Saskatchewan High School. For description of Educational System see page 8.

CLIMATE. In summer the temperature often rises to 100 degrees. Winters are cold, lasting from end of November to middle or end of March. The atmosphere is clear and dry owing to the altitude, 1,500 ft. to 3,000 ft. Snowfall is light. Bright sunshine is the rule. There are no blizzards, floods, earthquakes or cyclones. West and south of Swift Current chinook winds occasionally occur. Here cattle winter well on the range. The following table compiled for "Heaton's Annual" by the Meteorological Department at Toronto shows the mean average temperature and average annual rainfall in inches, at different points in Saskatchewan:

	Temperature	Rainfall
Indian Head.....	33.9	18
Moose Jaw.....	34.6	14
Moosomin.....	33.5	16
Pense.....	35.2	18
Prince Albert.....	31.7	17
Qu'Appelle.....	33.9	19
Regina.....	33.2	14
Saskatoon.....	32.5	14
Swift Current.....	35.2	16

DEVELOPMENT IN TEN YEARS.—The following statistics show the development of the Province from 1905 to 1915:

	1905	1915
Railway Mileage.....	1,176	5,936
Population.....	195,000	700,000
Cities.....	3	7
Towns.....	16	72
Villages.....	63	297
Rural Municipalities.....	2	297
Schools.....	896	3,693
Banks.....	53	408
Post Offices.....	212	1,632
Telegraph and Telephone Lines		
—Pole Miles.....	1,700	18,000
Area under crop. (acres).....	1,633,281	10,543,796
Crop returns (bush.).....	42,612,136	262,800,000
Grain Elevators.....	298	1,500
Elevator Capacity, (bush.).....	8,934,000	50,370,000

DOMINION HOMESTEADS. In the southeastern and central districts, where settlement is comparatively thick, homesteads are rather few and far between. The available homesteads are principally in the northern portion of Central Saskatchewan, which is watered east and west by the main Saskatchewan River and by its chief branch, the North Saskatchewan. Northern Saskatchewan has not yet been opened up to any extent for settlement.

HOW TO MAKE SELECTION. Homesteads in the Prairie Provinces are being rapidly taken up. It is, therefore, practically impossible to make a selection by correspondence. First visit in person the office of J. Bruce Walker, commissioner of Immigration, near the C.P.R. Station at Winnipeg. Here maps can be consulted and definite information obtained of Dominion Lands unallotted to date, the character of the soil, and a description of any district. Choose a locality and make alternative selections of homesteads, then apply to the Dominion Lands Agent in that locality.

DOMINION HOMESTEAD REGULATIONS. In Manitoba, Saskatchewan and Alberta, land is surveyed into townships 6 miles square, divided into 36 sections of 640 acres each. Sections 11 and 29 are reserved for school purposes; Sections 8 and 26 belong to the Hudson's Bay Co. Other sections are available for homesteading. Any person who is sole head of a family, or any male over 18 years old, who is a British subject, or declares his intention to become a British subject, or a widow with minor children of her own dependent on her for support, may, on paying \$10, obtain entry for a quarter section (160 acres more or less) of Dominion Lands in Manitoba, Saskatchewan or Alberta. Applicant must appear in person at the Dominion Lands Agency or sub-agency for the district. Entry by proxy may be made at any agency for a father, mother, son, daughter, brother, or sister, if eligible, and when duly authorized by the prescribed form. Duties: erection of a habitable house, 6 months' residence and cultivation of land in each of 3 years. A homesteader may live within 9 miles of his homestead on a farm of at least 80 acres, solely owned and occupied by him, or by his father, mother, son, daughter, brother or sister, or upon a homestead entered for and occupied by them within the prescribed distance. Before applying for patent, homesteader must break 30 acres and crop 20, part of work being done each year. If residing in vicinity, as stated above, he must break 50 acres and crop 30.

PRE-EMPTION. In southern districts of Alberta and Saskatchewan, a person who has secured a homestead may pre-empt an additional one-quarter section adjoining the homestead or separated therefrom by only a road allowance, provided he has not before obtained a pre-emption under Dominion Lands Act. Entry fee, \$10. Duties: (1) Residence of 6 months in each of 3 years on either homestead or pre-emption. (2) Erection of a habitable house on either homestead or pre-emption. (3) Cultivation of 50 acres of either homestead or pre-emption. Price \$3 per acre, payable $\frac{1}{4}$ at end of 3 years from date

of entry, balance in 5 equal instalments, with interest at 5%. Under an amendment made to the law in 1914, after earning patent for his homestead, a settler who has a pre-emption may obtain patent for such pre-emption by paying the amount of the purchase price in full and submitting proof that he has complied with all requirements of the Act up to the date of tendering payment, and that he has cultivated the whole area of 50 acres called for in connection with his pre-emption entry, or that he has complied with the requirements with respect to stock.

PURCHASED HOMESTEAD. In certain districts a homesteader who has completed the settlement duties required in connection with his free homestead, may obtain a purchased homestead, price \$3 per acre. Duties: (1) 6 months' residence upon quarter section so entered in each of 3 years, subsequent to entry. (2) Cultivating 50 acres thereon. (3) Erection of house thereon worth \$300. Entrant may reside on patented homestead if within 9 miles.

SUBSTITUTION OF STOCK FOR CULTIVATION. Under the recent amendment to the Dominion Lands Act, the ownership of live stock may be substituted for cultivation in the case of any homestead, pre-emption or purchased homestead, if a report from a Homestead Inspector shows that the quarter-section does not contain arable land to the extent required to obtain patent under the regulations with respect to cultivation.

DOMINION SCHOOL LANDS. These comprise Sections 11 and 29 in every township in Saskatchewan. They are administered by the Dominion Government in trust for the province, and can only be disposed of by sale at public auction to the highest bidder, subject to a certain upset price.

TERMS OF SALE. The sales are held yearly, provided the conditions are favorable, the lands being first inspected and valued to determine the upset price; terms—one-tenth cash and balance in nine equal annual instalments, with interest at 5%. Scrip or warrants are not accepted in payment. There are no settlement conditions.

GRAZING PERMITS. Grazing permits for these lands are granted annually at the rate of four cents per acre.

LEASES. Leases of these lands are issued (a) for coal mining for a term of twenty-one years at a rental of \$1.00 per acre and subject to a royalty of five cents per ton; (b) for petroleum and natural gas for twenty-one years, subject to a payment of rental from the first year at 25 cents per acre and at the rate of 50 cents per acre for the subsequent years; (c) for fire clay for a term of twenty-one years, subject to rental at a rate of \$1.00 per acre, not more than

GENERAL INFORMATION

forty acres being leased to any one person; (d) for hay purposes for a term of five years, subject to the payment of rental at the rate of 25 cents per acre.

PERMITS TO CUT TIMBER. Are issued subject to the payment of dues fixed by the regulations.

EDUCATION—PUBLIC SCHOOL DISTRICTS. Any portion of the province with an area not exceeding 20 square miles may be organized into a public school district, provided there are residing therein ten children of school age and four persons each of whom on its organization will be liable to be assessed for school purposes.

SCHOOLS IN PROVINCE. In 1916 there were in the province, 6 Collegiate Institutes, 15 High Schools, 3,685 Public School Districts, 14 Roman Catholic Separate School Districts and 3 Protestant Separate School Districts.

PUPILS AND TEACHERS. In 1916 there were 3,583 pupils attending High Schools and Collegiate Institutes; 129 teachers engaged in High Schools and Collegiate Institutes; in public schools, 119,279 pupils and 4,465 teachers; 185 first class, 1,857 second class, 1,957 third class, and 456 provisionally certificated teachers.

SCHOOL GARDENS AND FAIRS.—School Gardens and School Fairs are gaining in favour, and instruction in agriculture is gradually being introduced into the High Schools. The majority of Elementary Schools have gardens which are used in connection with instruction in Nature Study and Elementary Agriculture. Approximately 10,000 children representing about 500 school districts took part in 1916 in 84 school fairs.

UNIVERSITY. The University of Saskatchewan at Saskatoon was erected at a cost of \$5,000,000, after the pattern of the University of Chicago. It includes a college of arts and science, a college of law, a college of agriculture, and schools of engineering, pharmacy and accounting.

FISHERIES. With increased railway facilities the fishing industry will become important. In the north the great Lake trout run up to 60 lbs.; with whitefish, pike and perch, they form the bulk of the catch. In the south, whitefish, tullibee, pike, perch, yellow perch, buffalo fish and suckers are found. In the rivers goideyes and other fish are taken by the angler and large sturgeon occur.

FRANCHISE. To vote for a member of the Dominion or Provincial Government it is necessary to be a native-born or a naturalized British subject, with 12 months' residence in Canada and 3 months in the electoral district. In Municipal Elections, men and women of any nationality, being property holders, may vote even on such matters as taxation.

FORESTS. The northern forest contains white and black spruce, larch, jack pine, white poplar, balsam, white birch.

The white spruce grows to a large size and is chiefly used in the manufacture of lumber.

LUMBERING. North and east of Prince Albert, lumbering is extensively carried on. There are 4 lumber mills at Prince Albert, others at Sturgeon Lake, Crooked River, Greenbush and Etoimami. It is estimated that 9,120 workmen found employment in the lumber mills in 1914. The total output was valued at \$7,602,325. Thirty-eight planing mills had an output of \$2,295,594.

MINING.—MINERAL PRODUCTION. The annual mineral production of the Province of Saskatchewan for the past 6 years, as published by the Department of Mines, Ottawa, is as follows:

1910.....	\$ 498,122	1913.....	\$ 881,142
1911.....	636,706	1914.....	712,313
1912.....	1,165,642	1915.....	395,728

PROSPECTING OPPORTUNITIES. The northern portion of Saskatchewan consists of pre-Cambrian rocks, in which, in Ontario, Michigan and Minnesota, rich silicon, copper, iron, gold, pyrite, mica and other mineral deposits have been found. Northern Saskatchewan is practically virgin territory for the prospector.

CLAY. Clay suitable for making bricks is found in many localities. At Estevan the clay deposit is underlaid by lignite coal. In the Dirt Hills south of Moose Jaw, white and grey clays of a refractory character are found associated with clay shales. By using proper admixtures of the different beds, fire brick, pressed brick, sewer pipe and stoneware can be made.

COAL. Lignite occurs abundantly in the Estevan and the Souris River field. Operations are carried on by several mining companies. A large field is being opened by branches of C.N.R. and C.P.R. near Wood Mountains in the south, and promising reports of discoveries come from West of Saskatoon. A colliery is operated 40 miles south of Moose Jaw. In 1915 the output of coal was 232,541 tons, of which about one-half was shipped to Manitoba.

GLASS SAND. Sand suitable for making glass occurs north east of Prince Albert.

GOLD. Dredging operations have been carried on in the North Saskatchewan River above Prince Albert, with some success.

IRON. Clay ironstone is found near the Cypress Hills, in the southwestern part of the province.

MINERAL PIGMENTS. There is an extensive and valuable deposit of pigments near Duck Lake. Good samples of Ochres have been found about 100 miles north of Lloydminster, and in other localities.

NATURAL GAS. At Swift Current, in a well owned by the city, gas was struck in 1914, at 2,200 ft. It has a constant



North and East of Prince Albert lumbering is extensively carried on. See page 9.

flow of 12 lbs. to the square inch. The gas is being used to heat the municipal hot houses.

PEAT. Peat bogs have been found to the north at Methy Lake and other places.

PETROLEUM. Bituminous shales occur near The Pas Mountains.

SALT. A salt spring exists in the Pasquia Hills, northeast of Prince Albert, and salt and sulphur springs are found in the western part.

MANUFACTURES. According to statistics published by the Dominion Government, the value of manufactured products in Saskatchewan in 1910, as compared with 1900, was: In 1900, \$651,667; in 1910, \$6,332,132. In 1910, the total value of products in Regina was \$1,313,274; in Moose Jaw, \$738,818; in Saskatoon, \$683,277.

BRICK AND TILE MANUFACTURE.—Beds of excellent clay are found in many parts awaiting development. (See under Mining.) Of the clay products annually used in Saskatchewan less than 25% is manufactured in the Province.

POPULATION. According to the Dominion Census, the population of the province was 91,279 in 1901, 257,763 in 1906, and 492,432 in 1911, of which 291,73 were males, 200,702 females. Estimated population in 1914, 691,000.

RELIGIONS OF THE PEOPLE. In 1911, according to the Dominion Census, 57 different religions were represented, including 96,564 Presbyterians, 90,092 Roman Catholics, 78,325 Methodists, 75,342 Anglicans, 56,147 Lutherans.

ORIGINS OF THE PEOPLE. In 1911, according to the Dominion Census, there were in the province: 251,010 British, 23,251 French, 68,628 Germans, 41,651 Austro-Hungarians, 11,718 Indians, 17,405 Russians, 33,991 Scandinavians.

RAILWAYS. On June 30th, 1916, the total operative railway mileage in Saskatchewan was 5,378.33, made up as follows: Canadian Pacific Railway, 2,767.70; Canadian Northern Railway, 2,195.63; Grand Trunk Pacific Railway, 415.00.

SPORT. BIG GAME. The pronged antelope is not so plentiful as formerly, but there are still a number of herds in the rolling country in the southwest—Black bear are found in the northern part.—Black tail and White tail deer are fairly general in the valleys and timbered sections of the province.—Elk and moose are found in the timbered country in the north, there are good points east of Prince Albert along the C.N.R. main line to the Manitoba boundary.

SMALL GAME. Of ducks and geese, many varieties abound in suitable localities.—Prairie chicken are common in prairie sections throughout the province.

TAXATION OF LAND. Taxation assessments tend towards straight land tax. The average tax, per quarter section (100 acres) is \$23.85. Write to Department of Municipal Affairs, Regina, for annual report.

RURAL MUNICIPALITIES. Land alone is assessed at its fair value. Certain buildings in hamlets are assessable when a hamlet has 50 people, it may be organized as a village. The number of acres assessed by rural municipalities is 50,126,702 with a total valuation of \$814,724,431.

CITIES AND TOWNS. Land is assessed at its fair value and buildings at not more than 60 per cent. of their value, but the assessment of buildings may be withdrawn entirely in a space of time not less than 4 years.

VILLAGES. Land is assessed at its fair value, and buildings and improvements at 60 per cent. of their value. The latter can be wiped out entirely in one year by a by-law passed by the Council Board at the request of two-thirds of the resident taxpayers.

NOTE—The Additional War Revenue required in Canada is raised by increase in Customs Tariff, taxation of banks, loan companies, a tax on railway and steamship tickets, telegrams, postal matter, patent medicines and proprietary articles. *Not one cent of War Tax is levied on lands.*

TELEPHONE SYSTEM. In 1908 the Provincial Government purchased the plant of the Bell Telephone Company within the province. The Government has actively pursued the policy of stimulating the organization of local rural companies. This policy has proved a great success. Poles for the construction of Rural Telephone Systems may be obtained from the Government at cost price. The Department is now operating Automatic Exchanges at Saskatoon and Regina, and in the new Prince Albert Exchange.

RURAL TELEPHONE DEBENTURES. Under the provision of the Rural Telephone Act, companies when they have received the Certificate of Incorporation from the Department may, after certain preliminaries, be authorized to issue debentures. Rural Telephone Debentures under the Act are proving attractive to the investing public. The annual rental charged for rural telephones is from \$6 to \$20.

TELEPHONE STATISTICS. The following statistics show the position as at 30 April, 1916: Total Government expenditure, \$5,703,105; total pole mileage purchased and constructed by the Government, 3,662.12; wire mileage ditto, 16,114.3; Government exchanges, 103; Government toll offices, 317; subscribers' stations, 35,332, including Government system, 15,677; rural cos. (349) connected with Government system, 9,196; and rural cos. not connected, 8,954. There were 641 rural companies with a capital of

\$2,125,750 operating 18,189 miles, and 18,180 subscribers' stations; also 37 Independent and Municipal Companies operating 156 miles, and 1,505 subscribers' stations.

WAGES.—AGRICULTURAL LABORERS. By the year, \$300 to \$350; by the month, \$30 to \$45. For harvesting and threshing, by the day, \$2.50 to \$3.50.

DOMESTIC SERVANTS. \$18 to \$25 per month with board.

Agriculture

BEEKEEPING. Can scarcely be called an industry in the province as yet. There are several apiaries in different parts, and these are meeting with good success and make good returns.

DAIRYING. The Eastern and Northern parts of the province combine excellent grazing facilities, with a plentiful supply of good water and are specially well adapted for dairying. The industry is growing rapidly in many of these districts and if good dairy stock could be obtained at reasonable prices the growth would be still greater.

BUTTER. The butter industry, is in an exceptionally solid basis. The farmers own 17 co-operative creameries, all operated by the Dairy Branch of the Department of Agriculture, and there are in the province 10 creameries, privately owned. The output of creamery butter in 1915 totalled about 3,500,000 lbs. The probabilities are that at least 4,500,000 pounds will be manufactured during 1916. The cream received at practically all of these creameries is graded and paid for according to its quality. The practice of this system for the past 3 years has greatly improved the quality.

CHEESE. So far only a small amount of cheese has been manufactured. The farms are large and dairymen are, therefore, widely scattered, so that to obtain a large quantity of milk it must be hauled long distances. This makes the cost of manufacturing excessive. On the other hand, cream for butter making can be carried successfully by rail for 100 miles or more.

MARKETING. The Dairy Branch has in 1916 undertaken to market the export butter of privately-owned creameries as well as that of the co-operative creameries. Grading depots have been established at Prince Albert, Saskatoon, Regina and Moose Jaw. After being assembled at these points, each churning is graded by a Government grader and then shipped in carload lots. Most of this butter finds ready sale in the markets of British Columbia. In 1916 some was sold to the Montreal trade and for export to Great Britain.

GOVERNMENT INSTRUCTION. Information relative to dairying is imparted by lectures, bulletins and other literature,

and also by means of a "Special Dairy Car" which operates for several weeks each year.

DRY FARMING is a system of soil tillage whereby the rain is stored and conserved for the use of crops. It includes (a) deep ploughing to increase the absorptive capacity of the soil; (b) frequent cultivation of the service soil during the summer to check evaporation; (c) the selection of drouth resisting crops. The wide application of these principles makes practicable the occupation by farmers of areas hitherto thought to be suitable only for ranching.

FARMING ESTIMATES—COST OF IMPROVING LAND. The following is an estimate of the cost of farm development, where it is done by contract work: Breaking, 3 inches deep, per acre, \$3 to \$3.75; harrowing, each operation per acre, 25c. to 30c.; discing 3 times, per acre, \$1.50; seeding, not including seed, but including treatment of seed before sowing, per acre, 60c.; seed, per bushel, market price; fencing per mile, 3 wires, posts one rod apart, \$100 to \$125; hauling grain from nearest station to land, per mile, per bush., wheat $\frac{3}{4}$ c., oats $\frac{1}{2}$ c., minimum charge for hauling grain to elevator, 2c. per bushel; treating grain with bluestone or formalin, per bush. (but not less than \$2), 3c.; boring wells, using steel casings, per ft., \$2 to \$3; boring wells, using galvanized casings, per ft., \$2 to \$2.75; cost of good work horse, \$150 to \$200, cost of milch cow, \$50 to \$75 per head; cost of sow for breeding, \$15 to \$20 per head. Coal varies with locality from 50c. per ton at mine, to \$6 per ton delivered at shipping point. A 6-roomed house, \$700; a stable to accommodate 6 horses, \$200; a cow shed to accommodate 8 head, \$400; implement shed, \$100; granary for 2,000 bush., \$100.—At least \$2,000 cash is necessary to make necessary improvements on say a half section.

COST OF STARTING A FARM. The following statement of the amount required to make a start has been approved by well-informed implement men, practical farmers and large farm land companies: 1 team horses, \$250 to \$500, according to weight; 1 set of harness, \$35 to \$40; 1 wagon, \$80 to \$90; 1 sleigh, \$35; 1 plow, \$28; 1 set harrows, \$20; 1 set disk barrows, \$35; 1 seeder, \$85; 1 mower and rake, \$95; 1 reaper and binder, \$170; other implements, \$50 to \$75; total, \$833 to \$1,073. Prices vary in different parts of the country. The settler might start with 4 cows, \$160; 4 pigs, \$15; 4 good sheep, \$20; poultry, \$10; total, \$250. Add to this household necessities.

FLAX. According to the Dominion Census the output for the whole of Canada dropped from 26,130,000 in 1912, to 6,060,499 bushels in 1915. Flax is considered one of the best crops for sowing on new ground, but has fallen into disfavor on account of the instability of former prices.

LINSEED. At present flax is grown for seed only, which is purchased by the linseed oil mills in Canada and the United States.

FIBRE MANUFACTURE. Hitherto the straw of the flax crop in Western Canada, amounting to over a million tons, has been burned. The fibre is too short and too poor in quality to be profitably used in linen fabric or thread manufacture. The fibre industry of Canada is at present being investigated by G. G. Bramhill, of the Dominion Experimental Farms, Ottawa.

FLAX PAPER. It is estimated that ten tons of flax straw will make one ton of high-class "half stuff" for paper, worth in normal times \$140.00 to \$200.00 per ton. The following estimate of profit is made. Flax straw at \$3.00 per ton; cost of manufacturing, \$108.00 per ton; estimated investment, including working capital for mill producing ten tons daily, \$500,000. When selling the product at \$140.00 per ton a capital of \$500,000 would pay annually 7 per cent., allow 5% depreciation and leave \$40,000. Large scale production of this half stuff has not yet been attempted.

FLAX TOW. Experiments in the U.S. have demonstrated that flax straw can be utilized for the manufacture of flax tow to replace imported tow from Europe, and for the manufacture of counter-board. See Bulletin No. 322, issued by Bureau of Plant Industry, Dept. Agriculture, Washington.

FODDER CROPS—ALFALFA. The cultivation of alfalfa is attracting much interest in Saskatchewan. The competition instituted by the Provincial Government in 1911 and concluded in 1914, when a silver trophy and some \$6,300 in cash prizes were distributed, has done much to increase the interest in alfalfa. Alfalfa has been successfully grown throughout Saskatchewan.

PRAIRIE GRASSES. Generally are of two classes, viz. "prairie wool" and "slough" or "marsh" hay.

DOMESTIC HAY. Timothy occupies the greatest acreage. Rye and brome grasses are sown to a lesser extent. Clover, alsike, alfalfa and corn are reported in limited areas.

FRUIT GROWING. The smaller hush-fruits grow in profusion all through the province, and an excellent quality is obtained. Larger fruits are in the experimental stage as yet. A good variety of early apples has been produced on the Experimental Farm at Indian Head. The market for larger fruits is still supplied by the Ontario, British Columbia and Washington Territory, U.S.A.

GRAIN CROPS.—The October Dominion estimate of the 1916 harvest of the grain crops of Saskatchewan, is as follows:



Saskatchewan ranks second among the Provinces in live stock. S. W. Saskatchewan west of Swift Current is particularly adapted to cattle and sheep raising. See pages 18, 19.

	Acreage	Average Yield	Total Yield
Wheat	5,252,100	14.88	78,151,000
Oats	2,657,000	41.17	109,380,000
Barley	262,500	27.96	7,340,000
Rye	3,200	30.80	99,000
Peas	300	32.66	12,000
Flax	607,000	10.78	6,543,000
Mixed Grains	2,000	46.66	93,000

IN THE YEAR 1915—195,168,000 bushels of wheat were harvested from 6,838,100 acres, an average of 28.54 bushels per acre.

157,028,600 bushels of oats were harvested from 2,937,000 acres, an average of 53.67 bushels per acre.

10,570,200 bushels of barley were harvested from 287,000 acres, an average of 36.83 bushels per acre.

WINTER RYE. This crop has not been extensively grown in Saskatchewan, but wherever tried has proved perfectly hardy and reliable. As a forage crop it will be of great value in connection with dairying. As a cleaning crop it is superior to barley in controlling wild oats. It will also aid greatly in preventing the blowing of summer fallowed fields. As a grain crop it has an important place, but when all its benefits are recognized a much more extensive use of it may be expected.

Exhibition Prizes. At the 8th International Dry Farming Congress, held at Tulsa, Oklahoma, in 1913, in competition with the Dry Farming World, Saskatchewan won the Grand Prize for the best bushel of hard wheat and the prizes for the best bushel of oats, best peck of flax, best sheaf of barley and best sheaf of flax, were all won by Saskatchewan farmers. At the National Exhibition, Dallas, Tex., Saskatchewan won, for the third time in 5 years, the world's prize for the best peck of oats. At the International Dry Farming Congress, at Wichita, Kansas, 1914, Saskatchewan won two first premiums for Western Rye and brome grass. At the International Dry Farming Congress held at Denver, 1915, Saskatchewan won first prize for hard spring wheat, hard winter wheat, soft spring wheat, white oats, alfalfa, brome grass, rye, also prizes for white oats, timothy, barley and flax.

HAIL INSURANCE. The provincial hail insurance law is entitled "The Municipal Hail Insurance Act." Municipalities may adopt it by submitting it to a vote of the resident electors. Twenty-five or more municipalities may unite to organize the system. All business connected therewith is conducted by "The Hail Insurance Commission," which is composed of 3 commissioners, 1 appointed by the Lieutenant-Governor-in-Council, and 2 elected by

the reeves of the municipalities. The maximum of loss paid is \$5.00 per acre. To provide a fund to pay losses a tax of 4 cents per acre is levied equally upon all the assessed lands in the municipalities. Owners of crop may carry additional hail insurance with companies if they desire. One hundred and thirty-nine municipalities were included in the scheme in 1916. Claims paid in 1913, 1914 and 1915 amounted to \$1,940,670.28.

LIVE STOCK. Saskatchewan ranks second among the provinces in the value of live stock. The opening of the U.S. market has given a great impetus to the live stock industry. The North Battleford Live Stock Co. was formed for the purpose of selling live stock to the farmers on credit, the first organization of the kind, which has since been copied in other places in Western Canada. The Live Stock Associations are active organizations in promoting the interests of stockmen. The Saskatchewan Stock Growers' Association is the official organization of the ranchers in South-Western Saskatchewan. The Saskatchewan Winter Fair Board holds Winter Fairs at Regina and Saskatoon. These fairs include fat stock, stallions and hull sales. See below under Ranching.

CATTLE. In 1916 cattle numbered 218,230 milch cows and 556,710 other cattle.

HORSES. In 1916 there were 646,633 horses in the province. The Government has a Stallion Enrollment Act which is of great benefit in aiding the farmers to secure well-bred stock. Clydesdales are the foremost breed in the province. Percherons make a good second. There are some Shires, Suffolk Punch and thoroughbreds, but they are few in number when compared with the first mentioned breeds. Stallion shows are conducted by many of the Agricultural Societies. In the south-western part of the province ranching is still carried on to a considerable extent. The horse raising industry has been steadily increasing during the last few years and gives great promise for the future. Work horses are still being imported from the older provinces. In 1914 the Provincial Government donated over 1,300 cavalry and artillery horses to the British War Office.

SHEEP. In 1916 there were 138,350 sheep in the province. There are a few pure bred flocks in which Leicester, Shropshire and Oxford are the breeds represented. Ranching is carried on as in Alberta, flocks varying from 2,000 to 4,000. The Government have set aside certain districts where leases for grazing alone can be got. The sheep on the ranches are mostly Merino grades; the foundation flocks came from Montana. Shropshires, Oxford, Leicester and Lincoln rams are used. Few sheep are fattened during the winter.

Wool. The Saskatchewan Department of Agriculture markets co-operatively the wool clip from Saskatchewan farmers who desire it. Formerly very low prices were realized. The following figures show what has been done since this co-operative marketing was begun:

Year	Wool Marketed Co-operatively	Price
1914.....	60,404 lbs	17½c.
1915.....	148,338 lbs	25c.
1916.....	176,701 lbs.....	32½c.

In 1916 the Dominion Government graded the wool.

SWINE. In 1916 there were 334,489 swine in the province. One abattoir is in operation at Moose Jaw, but large numbers of hogs are shipped to the Winnipeg market. Half of the shipments to Winnipeg come from Saskatchewan. This is Canada's opportunity to capture British trade. Danish bacon is still standard in England, but since 1914, owing to German demand, Danish exports of bacon to Great Britain have decreased enormously. We cannot compete with the U.S. in the fat hog because for competitive marketing it must be fed on large quantities of cheap corn not here obtainable and Canada has comparatively little home demand for lard. The bacon hog should weigh 160 to 200 lbs live weight. Success depends upon adherence to type by the farmer, buying on a quality basis, and production of a regular supply each month.

POULTRY. In 1916 reports showed \$2,500,000 worth of all kinds of poultry. Whilst almost every farmer keeps some poultry, the local supply is supplemented by imports from other provinces. The Saskatchewan Department of Agriculture has inaugurated a co-operative system of poultry marketing by which live poultry is received from farmers at central killing stations. Payments are advanced at the rate of two-thirds the value of the birds and the balance less cost of handling is remitted when the poultry is sold.

RANCHING DISTRICTS. South-west Saskatchewan, west of Swift Current to the Alberta boundary, and south to the International Boundary, is peculiarly adapted for cattle and sheep raising. Owing to the Chinook winds from the Pacific Ocean the winters here are mild and the snowfall light. Cattle, horses and sheep graze the whole year. Hog raising is rapidly becoming an important industry. The "buffalo grass" in the Swift Current Creek region is very luxuriant, affording good pasture both in winter and summer. The town of Maple Creek is an important stock centre.

DOMINION GRAZING LEASES. Leases will be granted for 10 years. The maximum area granted to any one person

is 12,000 acres. Application for grazing leases on any land will only be granted after inspection to determine whether the land is grazing or agricultural land. Should the Inspector of Ranches, on making examination of a tract of land applied for, find that there are conflicting interests in the land affected, and that the granting of a lease would be an injustice to other settlers who had been using the land, the same, if unfit for agricultural purposes, may be withdrawn from entry and reserved for public grazing purposes. Lessees must fence the area they obtain under lease, and must have 1 head of horses or cattle, or 5 sheep for every 30 acres. Where the inspectors consider the land will carry more stock, they will fix the number to be grazed on each area. One third of the required stock must be placed the first year on each area granted. At least 25% of the stock must always be breeding stock.

ROOTS AND VEGETABLES.—POTATOES. Potatoes easily occupy the most important place among the root crops, representing at least 70% of the total acreage. In 1915 the total production was 4,428,000 bushels.

TURNIPS, ETC. Turnips and mangels are grown to some extent for feed.

SUGAR BEETS. Sugar beets have proved very successful in some parts of the province.

GARDEN VEGETABLES. Practically all the smaller garden vegetables are grown, and excellent results are obtained.

WHEAT. The ideal temperature for wheat is a mean summer temperature of 60 degrees. This extends as far as latitude 65 degrees. The greatest yield is nearest the northern limit of successful growth. In the northern latitudes, four and five grains are found to the cluster, as against two grains usual in U.S. wheat fields. This is due to the winter frosts, summer rains and the soil, of which the chief ingredients are nitrogen, potash and phosphoric acid.

SPRING WHEAT. The leading varieties are Red Fife and Marquis, which grade hard and are known as Manitoba Hard Wheat. They fetch a higher price than any other varieties grown. The Marquis, a recent development, matures about 15 days earlier than Red Fife. At Indian Head, Sask., a yield of 81— bush. per acre was officially recorded in 1913. This variety won first prize for the best bushel of wheat grown in America, at New York in 1911; at Tulsa, in 1913; at Wichita, in 1914, and at Denver, in 1915. Prelude Wheat was introduced in Saskatchewan in 1913. It ripens about 2 weeks earlier than Marquis and is ready for cutting before Aug. 21st, thus escaping the danger of early frosts. It is a short-growing wheat, producing very hard kernels, and seldom weighs less than 62

or 63 lbs. to the bushel. It is less popular than the Marquis because it is not nearly so large a yielder.

WINTER WHEAT. In Saskatchewan generally, winter wheat is not an important crop, as it has not been found proof against winter killing, except in a few districts in the north and east.

PROFIT PER ACRE BY CONTRACT WORK. The following estimate is regarded as fair by practical men. It shows the cost and profit per acre on a crop of wheat on say 25 acres: Preparing land for seeding, \$4; drilling, 20c.; hinder harvesting, 75c.; threshing and delivering 1 acre of 22.50 hushels at 8c., \$1.80; entire cost of wheat crop delivered to the elevator, \$6.75; add interest, 8% on land, at \$20 per acre, \$1.60; taxes (land, school and road) per acre, about 20c.; total cost per acre, say \$8.50; profit crop average, say 22.50 hushels per acre at 75c., \$16.87. Net profit per acre, clear of all expenses, \$8.37.

Agricultural Districts

This chapter contains descriptions of some of the leading districts to which immigration is attracted. Illustrations will be found scattered through the Booklet.

SASKATCHEWAN. The province is divided naturally into:

NORTHERN SASKATCHEWAN. Heavily wooded beyond Tp. 63, and has scarcely been explored yet. The Hudson Bay traders, and a few trappers and prospectors, form almost the entire white population.

SOUTHERN SASKATCHEWAN. South of Tp. 63, and extending to the International Boundary line, are the great prairie lands which have made Saskatchewan so well known as an agricultural province. This area contains 86,826,240 acres. In 1916 there were only 17,602,250 acres under the leading grain crops, although a careful estimate shows that at least 57,884,160 acres of arable lands lie within the boundaries of this district. The country is centrally divided by the Saskatchewan River (navigable), and includes undulating prairies, with lakes and ponds, rolling prairie with bluffs of poplar and high rolling country, partly heavily timbered with spruce and pine. Soil and climate are peculiarly adapted to cultivation of wheat.

ARCOLA DISTRICT. Land is slightly rolling and very well drained. Soil, rich black loam, 18 inches deep, on clay subsoil. Well watered by Moose Mountain River and numerous smaller streams. Abundant pure water at 15 to 25 ft. A grain-growing district, with large tracts of well-watered open prairie, making good grazing land. Good opening for mixed farming and dairying. Some hogs and cattle raised. Grain and fodder crops do well. Served



The Dominion Government have forestry nursery stations at Indian Head and Saskatoon from which trees are distributed to farmers in the Prairie Provinces. Above is an illustration of the Indian Head Nursery and a farmer's windbreak.

by C.P.R. Arcola br., and C.N.R. Maryfield br. Market at Arcola. Stock shipped to Winnipeg. Average crops per acre: Wheat, 25 bushels; oats, 60; barley, 35; flax, 15. Pop. about 3,000, all English speaking. Fine scenery in mountains to north. Shooting and fishing. No homesteads available. Average price per acre of raw lands, \$20 to \$30; improved farms, \$25 to \$65. Write Sec. Bd. Trade, Arcola, Sask.

ASQUITH DISTRICT. Land is slightly rolling, high and well drained throughout. Soil, black loam, 15 in. deep on clay subsoil. Watered by Eagle Creek, with Saskatchewan River on north boundary. Abundant pure water at 12 to 30 ft. A grain-growing and dairying district, with increasing mixed farming and horse breeding. Crop failures unknown. Market at Asquith, and great demand for dairy produce at Saskatoon, 25 miles e. Quaker Oats mill and terminal elevators at Saskatoon, affording great market for oats, etc. Served by C.P.R. Edmonton line and G.T.P. main line. Pop. 3,500, including Canadians, English and Americans. Average crops per acre: Wheat, 25 bushels; oats, 60; barley, 45. No homesteads available. Average price per acre of raw lands, \$25; improved farms, \$25 to \$35. Write Sec. Bd. Trade, Asquith, Sask.

ASSINIBOIA DISTRICT. Comprises a large tract of rolling land. Soil, clay loam, about 2 ft. deep, on clay subsoil. Watered by numerous small lakes. Wells average 40 ft. A grain-growing district, with mixed farming on the increase. In 1915 area under cultivation increased by about 30%. Principal crops and products: Grain, bogs and cattle. Served by C.P.R. Market at Assiniboia. Average crops per acre: Wheat, 25 bushels; oats, 65; flax, 12. Large deposits of coal and fire clay. Pop. about 10,000, largely Canadian, American and British. No homesteads available. H.B. Co. have all the available raw land for sale at \$20 per acre. C.P.R. have lands for sale. Average price per acre of improved farms, \$25. See under Descriptions of Towns. Write Sec. Bd. Trade, Assiniboia, Sask.

BATTLEFORD DISTRICT. Comprises a large area of undulating land. Soil, sandy loam, 18 ins. deep, with clay subsoil. Drained by Battle and Saskatchewan Rivers. Wells average from 10 to 35 ft. In depth. Essentially a mixed farming and dairying district. Leading crops and products. Cattle, grain, horses, swine. Average crops per acre: Wheat, 22 bushels; oats, 35; barley, 45. Good markets and transportation facilities for all farm products. Average price of raw land per acre, \$7 to \$15; improved farms, \$10 to \$25. Large area still available for settlement. No homesteads. Wood is plentiful in district.

Coal is obtained from Edmonton and Pennsylvania. Undeveloped water power in Battle River. Beautiful scenery along both rivers. Pop. of district includes Canadians, English, Americans and French Canadians. See under Descriptions of Towns. Write for free literature to Sec. Bd. Trade, Battleford, Sask.

CANORA DISTRICT. Area about 50 miles e. and w. by 90 miles n. and s. Northern part is rolling, with some timber. To e. and w. of Canora are level, fertile plains. Soil, black loam, 18 ins. to 2 ft. deep, with clay subsoil. Abundant water at 15 to 40 ft. Good local market at Canora. Well served by C.N.R. and G.T.P. A grain-growing, mixed farming and dairying country. Vegetables do well. In 1915, wheat averaged 40 bushels; oats, 80; barley, 40; flax, up to 20. Pop. includes Canadians, British, Americans, Germans, Doukhobors, Austrians and Russians. 30 to 40 townships available for homesteads. about 40 to 70 miles n. or projected railway lines. Canora Live Stock Co., Ltd., assists responsible farmers in district by advancing money to purchase stock. Price per acre of raw lands, \$10 to \$15; improved farms, \$20 to \$30. Wood costs about \$4 a cord. Soft coal, \$7; hard, \$12. Write Sec.-Treas. Bd. Trade, Canora, Sask.

CARNDUFF DISTRICT. Land is level prairie, watered by Souris River and numerous creeks. Soil varies from clay loam to sandy loam, easily worked, on deep clay subsoil. Abundant pure water at 15 to 30 ft. Good shipping facilities by C.N.R., G.T.P. and 3 branches of C.P.R. Other lines projected. Low freight rates to Eastern markets. A grain-growing and mixed farming district, producing wheat, flax and coarse grains, horses, cattle, hogs and poultry. Corn and alfalfa are grown successfully. Climate is good and free from early frosts. Abundant fuel obtainable from the Estevan coalfields, 50 miles w. of Carnduff. Price of land varies from \$15 to \$50 per acre, according to location and improvements. Write Sec. Bd. Trade, Carnduff, Sask.

CARROT RIVER VALLEY. Area about 90 by 30 miles. Served by the C.N. Ry. Land mostly level; in parts rolling or hilly, well watered. Wood plentiful. Admirably adapted for mixed farming or grain growing. Soil is rich black loam several feet deep. All kinds of crops are successfully grown. To the east is a large wooded district containing valuable timber. North of Melfort, on the direct line of the railway being constructed to the Hudson Bay, a number of homesteads are available. The North Saskatchewan Land Co., Ltd., Winnipeg, have large holdings in this valley.

DELMAS DISTRICT. Land is rolling, with sandy loam 3 feet deep, clay subsoil, watered by lakes and rivers.

Wells average about 26 ft. deep. Mixed farming is carried on. Leading crops: Wheat, oats and barley. Served by C.N.R. Good market at Battleford. In local districts wood is obtainable for fuel. Good water power. Fine scenery. Country well wooded with poplar bluffs. Average price of raw lands per acre, \$15 to \$20; improved farms, \$20 up. Pop. 400, mostly French and English.

ESTEVAN DISTRICT. Area about 5,000 sq. miles. Land is slightly rolling, high and dry. Some sandy soil near rivers to s. of town. The rest is black and clay loam, 2 feet deep, on clay subsoil. Watered by the Souris River and Long Creek. Wells, 30 to 150 ft. Served by C.N.R. and 4 lines of C.P.R.; G.T.P. have charter. Good local markets provided by mines and brick yards. A grain-growing country, with some mixed farming. Wheat averages 20 bushels; oats, 50; barley, 40; flax, 15. Neighborhood supplies unlimited lignite coal and clay for brick and pottery. Banks and rivers well wooded. Pop. about 15,000, including Canadians, Americans, English, Scandinavians, French and Germans. Immigration in 1912 estimated at 500. No homestead available. Average price per acre of raw lands, \$25; improved farms, from \$30. See under Descriptions of Towns. Write Commissioner Bd. Trade, Estevan, Sask.

HERBERT DISTRICT. Tributary area about 1,700 sq. miles. Land is partly level, partly rolling prairie, drained by creeks running into South Saskatchewan River. Soil, rich chocolate loam, 12 to 24 inches deep, on clay subsoil. Numerous springs and small lakes. Wells from 10 to 150 feet. A grain-growing country, well suited to mixed farming. Principal crops: Wheat, oats, flax, barley and potatoes. Considerable stock raising along the south Saskatchewan River. Storage elevator and flax mill at Moose Jaw; 5 elevators and flour mill at Herbert. Served by C.P.R. transcontinental line, double-tracked east and west. Roads are being improved every year. Average crops per acre: Wheat, 18 bushels; oats, 50; barley, 30; flax, 15. Pop. 7,000, including English, Germans, Swedes and Norwegians. Homesteads available at some distance from railway. Hudson Bay Co. have lands for sale. Average price per acre of raw lands, \$15 to \$20; improved farms, \$20 to \$30. Write Sec. Bd. Trade, Herbert, Sask.

HUMBOLDT DISTRICT. Area about 18,000 sq. miles; 85% arable; only 20% under cultivation. Land is slightly rolling, with some small lakes and creeks. Soil, black loam, 8 to 24 inches deep, with clay subsoil. Pure water plentiful at 20 to 80 ft. Mixed farming, grain growing, dairying and stock raising prevail. Local market at Humboldt. C.N.R. main line provides shipping facilities for other markets. Pop. 40,000 to 60,000, including Canadians,

English, Americans, Scotch, Irish and American Germans. Humboldt butter has won biggest awards in open competition at Winnipeg Fair. 2,300 free homesteads available. Price per acre of raw lands, \$10 to \$40; improved farms, \$20 to \$60. See under Descriptions of Towns. Write Commissioners, Bd. Trade, Humboldt, Sask.

INDIAN HEAD DISTRICT. Comprises about 22,100 acres. Land is slightly rolling. Soil, black loam with clay subsoil. Wells from 10 to 15 ft. deep. Leading products are wheat and oats. District was first settled by Ontario farmers. English and Scotch are represented. Traversed by C.P.R. Price of lands per acre, unimproved, \$15 to \$25; improved, \$40 to \$60. The Dominion Government Experimental Farm here covers one sq. mile, and Forestry Farm 320 acres. See under Descriptions of Towns. Write Sec. Bd. Trade, Indian Head, Sask.

JACK FISH LAKE DISTRICT. On C.N.R. line from N. Battleford to Athabasca Landing, embracing Bright Lake, Turtle Lake, Turtle River Valley and Lac de la Biche. An open rolling country, well watered, adapted for mixed farming. The low altitude and long day tend to eliminate danger from frost; general average yield for oats is 70 bush. Many settlers have secured 30 bushels of wheat per acre. Write Land Department, C.N. Ry., Winnipeg, Man.

KAMSACK DISTRICT. Land is fairly level. A few small hills to north, where country is well wooded. Soil, black loam, 18 inches deep, on clay subsoil. Well watered throughout; irrigation unnecessary. Wells 15 to 20 ft. A mixed farming district, with increasing grain area. Large numbers of bogs and cattle raised, and some poultry. Served by C.N.R. main line. Markets at Kamsack (3 elevators) and other points along railway. Average crops per acre: Wheat, 22 bushels; oats, 75; barley, 35; flax, 20. Abundant water power could be developed from Assiniboine River. Extensive deposits of brick clay, sand and gravel. Pop. includes English, Americans, Canadians, Russians and Germans. Homesteads available to north within 15 miles of Kamsack. Average price per acre of raw lands, \$18 to \$20; improved farms, \$19 to \$30. See under Descriptions of Towns. Write Sec. Bd. Trade, Kamsack, Sask.

KERROBERT DISTRICT. Land is flat to e. and w., gently rolling to n. and s. Well drained throughout with occasional small sloughs. Soil, chocolate loam, 12 to 18 inches deep, on clay subsoil. Well watered; no irrigation needed. Wells average 50 ft. A grain-growing district, with mixed farming on the increase. Hogs raised profitably. Market at Kerrobert. Served by C.P.R. Minnea-

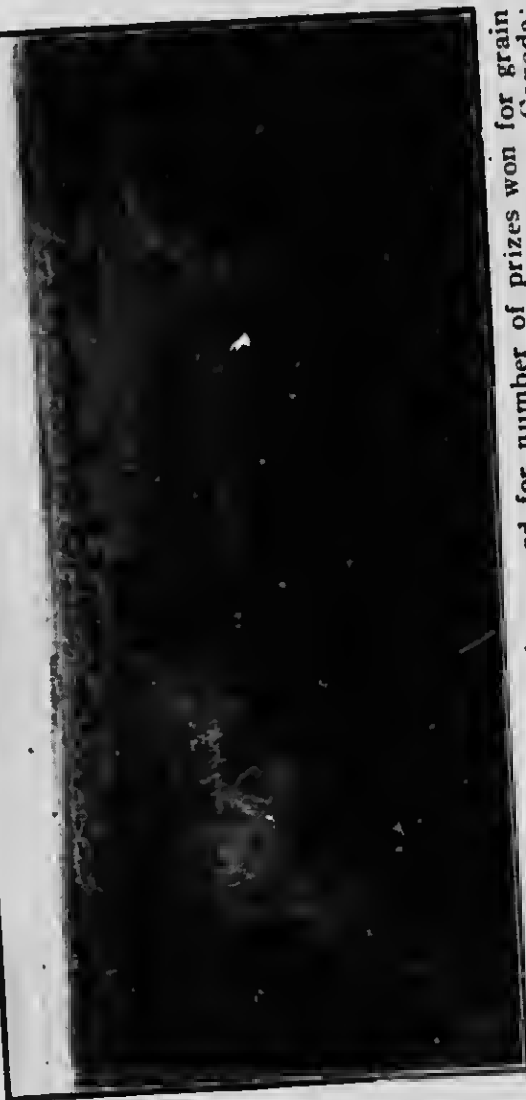
polis-Edmonton direct line, Moose Jaw-Lacombe hr. and Kerrobert-Cutknife hr. via Wilkie. Average crops per acre: Wheat, 15 to 30 bushels; oats, 65; barley, 35; flax, 18. Pop. 3,500, including Canadians, Americans, British, Russians and Germans. C.P.R. have lands for sale. Average price per acre of raw lands, \$19 to \$26; improved farms, \$22 to \$40. See under Descriptions of Towns. Write Sec. Bd. Trade, Kerrobert, Sask.

KINDERSLEY DISTRICT. Land slightly rolling. 90% arable. Soil, chocolate clay loam, 24 in. in depth, with clay subsoil. Wells 50 to 100 ft. deep for domestic and farm purposes. Principal occupation, grain growing. Stock raising is carried on in southern parts of district. Served by C.N.R. Saskatoon-Calgary line and C.N.R. & G.T.P. branches north and south. Price of raw lands per acre, \$10 to \$15; improved farms, \$20 up. Coal is procured at Drumheller, 150 miles distant. Settlers, chiefly British, American and some Germans. See under Descriptions of Towns. Write Sec. Bd. Trade, Kindersley, Sask.

LANIGAN DISTRICT. Land slightly rolling and of a park-like nature, consisting of poplar and willow bluffs, together with large tracts of open prairie. Soil, a black sandy loam from 12 to 18 inches, with a good clay subsoil, producing luxuriant grasses, both natural and cultivated, watered by ample rainfall, with first-class wells from 15 to 20 ft. in depth. The best opportunity for grain growing extensively owing to the large area of open prairie in the district and adjacent to the town, chiefly to the south. Leading crops with average bushels per acre are: Wheat, 25; oats, 50; flax, 15; barley, 40, with a total crop failure unknown. Vegetables and poultry are exceptionally successful, with good markets for dairy produce and poultry products at Saskatoon, together with local market for all garden truck. Large quantities of hogs and cattle shipped weekly to Winnipeg and eastern markets. There is a government co-operative creamery at Lanigan. One of the best districts in Saskatchewan for wild duck, prairie chicken, partridge, wild geese and Sandhill crane. Served by the C.P.R. Winnipeg to Edmonton, also C.P.R. Pheasant Hills hr., and the Regina, Saskatoon hr.; all have daily trains. Settlers, chiefly British, Eastern Canadian and American, with a few Austrians and German Americans. Average price of raw farm lands, \$15 to \$20 per acre; improved farms from \$20 to \$35 per acre.

LLOYDMINSTER DISTRICT. Rolling in parts, partially wooded. Nearer Lloydminster are large level tracts of clear land. Essentially a stock-raising country, watered by Saskatchewan and Battle Rivers. Soil, rich black loam, 6 to 18 inches in depth, with clay subsoil. Watered by 2 rivers and lakes. Served by C.N.R. Govt. cream-

LLOYDMINSTER, SASK.



Lloydminster District holds the record for number of prizes won for grain exhibits in 12 months by any district of the same size in Western Canada; 34 prizes in 12 months awarded at the great Provincial Fair. Read description of Lloydminster District on page 27, and description of town on page 47. Write for further information to the

LLOYDMINSTER, SASK.

SECRETARY, BOARD OF TRADE

ry at Lloydminster, and large packing plant at Edmonton, furnish markets for dairy and stock farmers. In past 3 years district took over 40 prizes for grain exhibits at Edmonton, Regina, Calgary and Brandon fairs. \$1,500 silver trophy for oats, open to the world, given by Colorado, was won twice running by same farmer, 6 miles from Lloydminster. Local Poultry Assn. handles all farmers' eggs and poultry at best city prices. Plenty of homesteads still available. See under Descriptions of Towns. Write Publicity Commissioner, Lloydminster, Sask.

MACKLIN DISTRICT. Area about 500 sq. miles. Land is slightly rolling, high and well drained. Soil, chocolate loam, 1 to 3 ft. deep, with clay subsoil. District is traversed throughout by a creek and chain of lakes, two of which are of considerable size, with good boating. Wells average 30 ft. A grain-growing country with parts admirably adapted to mixed farming and dairying. Served by C.P.R. Winnipeg-Edmonton main line and St. Paul-Edmonton line. Hogs, cattle and sheep shipped to Edmonton, Moose Jaw and Saskatoon markets; dairy produce to Edmonton. Average crops per acre: Wheat, 25 bushels; oats, 45; barley, 35; flax, 12. Country is wooded to north, with good chicken, duck and goose shooting. Pop. between 3,000 and 4,000, chiefly British, some Germans. No homesteads available. Average price per acre of raw lands, \$17; improved farms, \$19 to \$22.

MELFORT DISTRICT. Comprises an area of about 4,000 sq. miles. The land is generally flat and rolling, with no hills; mostly dry, with very little scrub. Soil, black loam, average depth 2 ft., with clay subsoil. Watered by Carrot River, Stony Creek and smaller rivers and streams throughout. Wells average 15 ft. Abundance of pure water. Mixed farming predominates and is largely on the increase; considerable grain growing and dairying. Leading crops and products: Oats, wheat, barley, hay, hogs, cattle, horses, sheep and poultry. Markets at Melfort, Star City, Tisdale, Kinistino and Birch Hills. Butter is shipped to B.C. Some homestead lands available within 30 miles of Melfort. Served by C.N.R. Prince Albert branch; several other lines under construction and charter. Average crops per acre: Wheat, 35 bushels; oats, 75; barley, 40. Population of district includes Canadians, Americans and English. Nearly all English speaking. Average price of raw lands per acre, \$12 to \$20; improved farms, \$20 to \$50, according to location of railways. See under Descriptions of Towns. See under "Announcements." Write Sec. Bd. Trade, Melfort, Sask.

MELVILLE DISTRICT. Area 40 miles square. Land is rolling, dotted with small poplar groves. Soil black loam.

with clay subsoil, well watered. Wells 18 to 48 ft. deep. Mixed farming and grain growing. Traversed 4 ways by G.T.P. Ry. British, Norwegians, Swedes, Americans and Germans represented. Wood for fuel obtained in Beaver Hills. Average price per acre of raw lands, \$14 to \$25; improved farms, \$25 to \$35. See under Descriptions of Towns. Write Sec. Bd. Trade, Meville, Sask.

MEOTA DISTRICT. Land is rolling, partially covered with small poplar bluffs, easily cleared. Soil, heavy to sandy loam, 12 to 18 inches deep, on clay subsoil. Wells from 10 to 40 ft. A grain-growing and mixed farming district, producing wheat, oats, barley, and a little flax, which thrives very well; cattle, horses and hogs. Served by C.N.R. Markets at Edmonton, Saskatoon and Winnipeg. Average crops per acre: Wheat, 25 bushels; oats, 35; barley, 40. Population includes Americans, British and French. Fine scenery. Average price per acre of raw lands, \$10; improved farms, \$20 to \$30. Write Sec. Bd. Trade, Meota.

MOOSE JAW DISTRICT. A splendid agricultural section noted for the uniformly good average yields and quality of its crops. Flour and oatmeal mills and an up-to-date abattoir, are established at Moose Jaw. Grand Divisional point of the C.P.R. for Saskatchewan. The bulk of the homesteading in Saskatchewan takes place at the Dominion Lands Office at Moose Jaw. In districts where homestead land is still available an additional 160 acres may be purchased by each homesteader as a "purchased homestead," or as a "pre-emption." See under Descriptions of Towns.

MORSE DISTRICT. Land is rolling to north, flat to south. Soil, chocolate loam, 12 ins. deep, on clay subsoil. Wells average 100 ft. A grain-growing district with mixed farming on the increase. Horses, cattle and hogs raised. Grain and stock shipped to Winnipeg; local markets for dairy and garden produce. Served by C.P.R. main line. Marquis wheat grown in Morse District has won first prize at Saskatoon and Regina Provincial Exhibitions. Population, 15,000, including English-speaking races and Germans. C.P.R. and Hudson Bay Co. have land for sale. Average price per acre of raw lands, \$15; improved farms, \$20 to \$30. See under Descriptions of Towns. Write Sec. Bd. Trade, Morse, Sask.

NORTH BATTLEFORD DISTRICT. Comprising 40,000 sq. miles of rolling land, lightly dotted with poplar bluffs. Soil, black loam, 6 to 30 inches in depth, with clay subsoil. Well adapted to stock raising, mixed farming and grain growing. The country is well watered by lakes and streams. Leading crops and products are: Wheat, oats,

barley, flax, alfalfa, corn, spring and fall rye, vegetables, cattle, horses, hogs and sheep. Served by C.N.R., main line and branches. Markets, local and foreign. C.P.R. has opened local branch office of their Natural Resources Dept. for settlement of their farming lands in District, on 20-year payments. City owns market for use of farmers. There are thousands of acres of good cheap land and numerous homesteads available for settlement. The country is partly wooded, affording fuel for domestic purposes. Pop. of district about 50,000, chiefly Canadian, English, American, French and German. Write Commissioner, Bd. Trade, North Battleford, Sask.

OUTLOOK DISTRICT. Land is high and well drained; level except in extreme s.w., which is gently rolling. No hills. Soil, chocolate loam 18 inches deep, on clay subsoil. Watered by South Saskatchewan River. Wells 20 to 25 ft. A grain-growing district with mixed farming on the increase and some dairying. Hogs and some cattle and horses raised. Small fruits and garden vegetables thrive. Local markets at Outlook, Broderick and Conquest. Hogs shipped to Moose Jaw and Winnipeg. Served by C.P.R. Minneapolis-Edmonton direct line. Average crops per acre: Wheat, 25 bushels; oats, 50; barley, 50; flax, 12. Water power can be developed from South Saskatchewan River. Beautiful scenery in river valley. Pop. about 10,000, Canadians and Americans. No homesteads available. C.P.R. have lands for sale. Average price per acre of raw lands (very little obtainable), \$30; improved farms, \$25 to \$45. See under Descriptions of Towns. Write Sec. Bd. Trade, Outlook, Sask.

PARK BELT. North of the Yorkton branch of the C.P.R. and the main line of the C.N.R. lies a semi-wooded district known as the Park Belt, at present largely used for grazing. See under Yorkton District.

PERDUE DISTRICT. Land is slightly rolling; high and well drained. Soil, dark chocolate loam, 10 to 19 inches deep, on clay subsoil. Watered by a chain of lakes and several small creeks. Wells 9 to 80 ft. A grain-growing district, well adapted to mixed farming. Markets at Perdue and Leney. Served by C.P.R. Winnipeg-Edmonton line and G.T.P. main line. Average crops per acre: Wheat, 25 bushels; oats, 65 to 70 bushels; flax, 15 to 20 bushels. Pop. 2,500, mostly English-speaking, including English, Canadians and Americans. A few homesteads available about 10 miles from Perdue. Average price per acre of raw lands, \$10 to \$45; improved farms, \$25 to \$45.

PRINCE ALBERT DISTRICT. Comprises an area of 5,000 sq. miles of rolling, park-like country, interspersed with occasional hay sloughs. Well watered by Saskatche-

wan River and numerous smaller rivers, lakes and streams. Soil, black loam with clay subsoil, particularly well adapted for mixed farming. A mixed farming district with considerable grain growing, market gardening and dairying. Unlimited openings for extension of vegetable and fruit growing and dairying. All vegetables and bush fruits, particularly raspberries and strawberries, mature perfectly. Tri-weekly public market at Prince Albert assures quick sales, good prices and cash dealings for fruit, dairy and vegetable produce. Lumber camps during winter afford excellent market for all farm produce. Abundance of pure water. Wells average 11 ft. Leading crops and produce: Wheat, oats, potatoes, some flax and barley cattle, horses, hogs and sheep. Stock shipped principally to Prince Albert, Winnipeg and Winnipeg. Average crops per acre (exact returns covering 6 years, 1907-1914): Wheat, 22 bushels; oats, 45; barley, 30.5; flax, 16; potatoes, 287. Served by C.N.R. (4 branches). Good market in Prince Albert for all farm products. Average price of raw lands per acre, \$10 to \$15, improved farms, \$20 to \$25. Several thousand homesteads are available. Lumber camps assure employment for homesteaders during winter. Abundant wood for fuel easily obtainable throughout district. Pop. about 25,000, including Canadians, English, French, Galicians and Americans. See under Descriptions of Towns. Write Sec. Bd. Trade, Prince Albert, Sask.

QU'APPELLE VALLEY. The valley is about 300 ft. deep. The soil generally is sandy loam, watered by Qu'Appelle River. Wells 18 ft. deep in the valley; 30 ft. on the hills. A mixed farming district. The C.P.R. runs 18 miles south and 7 miles to north of valley, and the G.T.P. Ry. through the valley. Average crops are: Wheat, 30 bushels; oats, 50; barley, 40; flax, 18. Price per acre of raw lands, \$20; improved farms, \$30 to \$40. Practically no homestead lands. 18 miles north lies chain of lakes, with good boating, fishing and bathing. Write Sec. Bd. Trade, Qu'Appelle, Sask.

QUILL LAKE DISTRICT. An area 90 miles long by 75 miles wide, traversed by C.N.R. between Kuroki and Humboldt; a heavy rainfall, deep rich black soil with clay subsoil. A comparatively mild climate owing to low elevation. A very fine quality of wheat is grown. The wild grass and wild pea vine grow luxuriantly. Write Land Department C.N.R., Winnipeg, Man.

REGINA DISTRICT. District tributary to Regina extends from 50 to 100 miles in each direction. Land is almost all of highest quality and produced as much as 50 bushels of wheat to the acre in 1915. Regina is supplied with water from Wascana Creek, n. of the city, which never

goes dry. District is also watered by Saskatchewan and Qu'Appelle Rivers. Last Mountain Lake and the Qu'Appelle Valley Lakes are popular summer resorts. Overflowing wells can be obtained by boring from 15 to 30 ft. in many places. Grain growing, garden truck farming and dairying are carried on. District is served by C.P.R., C.N.R. and G.T.P., the G.N.R. having running rights into Regina over the G.T.P. Regina-Boundary line. Average crops per acre: Wheat, 25 bushels; oats, 65; flax, 15. Vegetables yield heavy crops. Pop. of district, 80,000. See under Descriptions of Towns. Write Commissioner Bd. Trade, Regina, Sask.

NOTE.—District won 2nd prize in 2-year-old stallion class at the International Livestock Show, Chicago, 1913.

SASKATOON DISTRICT. Saskatoon City has absolute freight rate control of an area extending to over 48,000 sq. miles, embracing upwards of 200 thriving points on 2,225 miles of operating railways. Chief crops: Wheat, oats, barley and flax. Stock raising, dairying and mixed farming are exceptionally profitable, and these lines are expanding very rapidly. Splendid opening for truck gardeners. Roots, alfalfa, and all tame fodders, raised to great advantage. Dom. Govt. elevator (3½ million bush.), is at Saskatoon. Lots of splendid land available at moderate prices and on easy terms. See under Descriptions of Towns. Write Commissioner, Bd. Trade, Saskatoon, Sask.

SWIFT CURRENT DISTRICT. Comprises 3,000 sq. miles of prairie land, slightly rolling, with all classes of loam, very deep, and clay subsoil, watered by Swift Current Creek. Traversed by C.P.R., G.T.P. and C.N.R. building. Good wells at 16 to 30 ft. Pop. 15,000, including Canadians, Americans, English and Scotch. Price of raw lands, \$15 per acre; improved farms, \$30 per acre and up. See under Descriptions of Towns. Write Sec. Bd. Trade, Swift Current, Sask.

WADENA DISTRICT. Area about 650 sq. miles, with flat prairie land to south, rolling park land to north. Soil is black loam, 12 to 18 inches deep, with clay subsoil. Wells, 10 to 24 ft. deep. Many lakes, creeks and ponds throughout district. Good annual rainfall. A mixed-farming country to the north; grain growing and mixed farming to south. Chief crops and products are cattle, pigs, poultry, wheat, oats, barley, flax, alfalfa, vegetables. Small fruits like gooseberries, currants, strawberries, etc., do exceptionally well. District took 1st prize for oats and dairy butter at Winnipeg Exhibition. Government cream dairy butter at Winnipeg Exhibition. Government creamery at Wadena pays highest prices for cream. Large

stock yards for local cattle market. Heavy local and neighboring demand for vegetables. District served by C.N.R. main line. Average price of raw lands per acre, \$15 to \$30; improved farms, \$20 to \$40. Numerous homesteads available to the north, some on projected C.N.R. Thunder Hill Branch. C.N.R. holds lands for sale. Pop. of district 3,000, chiefly Canadians, British, Americans and Scandinavians. See under Descriptions of Towns. Write Sec. Bd. Trade, Wadena, Sask.

WEYBURN DISTRICT. An area, 90 miles by 170, of rich, heavy soil, eminently adapted to the raising of hard wheat. Land in great demand, and average crop yield up to the highest standard for province. Country is rolling prairie, well watered and in some parts wooded. Served by several lines of the C.P.R., C.N.R. and G.T.P. Large crops of roots and alfalfa grown. Pop. of district 50,000, comprising American and German settlers, with British races in majority. Farm lands, \$30 per acre up; wild land, \$20. See under Descriptions of Towns. Write Industrial Commissioner, Weyburn, Sask.

WILKIE DISTRICT. Comprises some 60 townships. Land is slightly rolling, with stretches of level prairie. No hush. Graded roads in all directions afford good travelling. Soil, dark chocolate loam, 12 to 18 inches deep, with clay subsoil. Wells, 15 to 60 ft. deep. Market at Wilkie and good shipping facilities by 5 radiating lines of C.P.R. A grain country, with increasing mixed farming and dairying. Principal crops and products—Grain, hogs, cattle, sheep and dairy produce. Wheat yields from 15 to 50 bushels per acre; oats, 45 to 125; barley, 30 to 50; flax, 12 to 20. Pop., not including towns, 3,000; comprising Canadians, British and Americans. Average price per acre of raw lands, \$15 to \$25; improved farms, \$25 to \$35. See under Descriptions of Towns. Write Sec. Bd. Trade, Wilkie, Sask.

YORKTON DISTRICT. Land is rolling, with some small timber. Soil, black loam, 12 in. to 2 ft., with clay subsoil. Plentiful rainfall. Wells, 30 to 45 ft. A mixed farming district. Traversed by C.P.R. (main line) to Edmonton. G.T.P. Regina to Hudson Bay, C.N.R. Winnipeg to Calgary, now completed through Yorkton to a point 25 miles west. 8 elevators. Pop. of district over 10,000, including English, Scotch, Irish, American, German and Hungarian. Distributing territory covers about 20,000 sq. miles and includes 150 railway points. See under Descriptions of Towns. Write for free booklet to Sec. Bd. Trade, Yorkton, Sask.

Boards of Trade Register

Extracts from the Official Boards of Trade Register published in Heaton's Annual and compiled from returns received from the local Boards of Trade.—The Provincial Government assumes no responsibility in connection with this chapter.

Chief Town of Judicial District marked ¶

Hotels are, as far as possible, arranged in order of merit.

When Writing to Local References, Mention Should be made of Heaton's Annual.

ALAMEDA, on C.P.R. Estevan Branch, 132 miles s.e. of Regina. Hotel, Alameda. 3 churches, brick schools, bank. Industries, 4 elevators, telephone, lumber yard, garage and machine shop, 3 general stores, druggist, hardware. Alt., 1,894. Pop. 450.

SPECIAL OPPORTUNITIES.—Flour mill, creamery, veterinary surgeon, harrister, machine repair shop, elec. light plant, steam laundry. Write Sec. Bd. Trade.

ALSASK, so named because it is situated on boundary between Alberta and Saskatchewan, 169 miles s.w. of Saskatoon, on C.N.R. (Goose Lake br., Saskatoon to Calgary). Hotel, Royal \$2. 2 churches (Ang., Pres.Meth. (united)), school, bank, newspaper, 3 lumber yards, 3 liveryies, 11 stores, 3 elevators. Sub-agency Dom. Lands for E. Alberta. Townsites owned by C.N.R. 3 implement agents. Pop. 400.

SPECIAL OPPORTUNITIES.—Elevator. Write Sec. Bd. Trade.

¶ **ARCOLA**, on C.P.R. Arcola branch, 113 miles s.e. of Regina, 253 miles w. of Winnipeg. Div. point. Hotels, Arcola, Metropolitan. 4 churches, public and high schools, 2 banks. Town owns gravity system waterworks. Elec. light (private franchise), court house, \$16,000 town hall, theatre. Industries, 5 elevators (162,000 hush.), flour mill, brick plant, telephone, 2 lumber yards, aerated water works, machine shop, newspaper, 3 livery stables, 2 garages with machine shops, laundry and several stores. Centre of Cannington Judicial District, Land Titles building. Centre of wheat-growing district. Fish Lake, 18 miles n., beautiful summer resort with good boating, bathing, fishing, summer cottages and summer hotel. Splendid shooting within five miles; big game within 15 miles. Alt. 1,982. Pop. 1,200.

NOTE.—C.P.R. completed extension to roundhouse and 3 miles additional trackage in yards in 1915.



Harvest near Melfort. See pages 29, 47.

SPECIAL OPPORTUNITIES.—Sash and door factory, abattoir, creamery. See under "Agric. and Fruit Districts." Write Sec. Bd. Trade.

ASQUITH, 28 miles w. of Saskatoon, 300 miles e. of Edmonton, 520 miles w. of Winnipeg, on C.P.R. Edmonton line and G.T.P. main line. 3 churches (Ang., Pres., Bapt.), brick public school, town hall, agric. fair and exhibition grounds with race track. Town telephone system. Bank, newspaper, 2 elevators (125,000 hush.), flour mill (125 hhs. daily), machine shop, auto garage, livery, 5 implement agents, wholesale oil distributing plant, 3 general stores, 2 hardware, several others. Good brick clay at hand. A grain-growing and dairying district, with increasing mixed farming and horse breeding. Great demand for dairy produce in Saskatoon market. Pop. 350.

SPECIAL OPPORTUNITIES.—Brick yard, oatmeal and grist mills, dentist, shoemaker. Write Clerk of Municipality.

ASSINIBOIA, 1st divisional point w. of Weyburn on C.P.R. Winnipeg-Lethbridge short line, 425 miles w. of Winnipeg, 125 miles s.w. of Regina. Hotel, King George. 4 churches (Ang., R.C., Bapt., Meth.), new \$25,000 brick school, 3 banks, 5 elevators (205,000 bush.), roundhouse, coal chute, turntable, machine shop, steamfitter, 5 implement houses, 3 auto garages, 3 liverys, photographer, newspaper, moving picture theatre, roller skating rink, Land Titles Office, 3 wholesale oil cos., carrying large stock; 8 lumber yards, 8 general stores, 4 hardware, 25 others. Abundant lignite coal within 7 miles. Clay deposits, sand, and gravel in immediate vicinity, Govt. and rural telephones. Ample supply of pure water. Rich mixed farming district, chiefly flax, wheat and oats. Agricultural Society. Good goose shooting, rifle club, turf club, Automobile Club. Pop. 1,200.

NOTE.—C.P.R. Moose Jaw to Assiniboia, via Expanse, practically completed. 2nd hotel under construction. Electric light and water plant under construction.

SPECIAL OPPORTUNITIES.—Brick yard, steam laundry, sash and door factory, flax mill, grist mill, oatmeal mill, flour mill, first-class machine shop. Mortgage loans on improved farms and town property. See under "Agric. and Fruit Districts." Write Sec. Bd. Trade.

BALCARRES, on Kirkella br. C.P.R. and Melville-Regina br. G.T.P., 50 miles n.e. of Regina. Hotel, Plaza \$2. 4 churches (Ang., Pres., Meth. and R.C.), public and high schools, bank. Fine town hall, 2 lumber yards, newspaper, 2 br. wholesale houses, garage, 2 livery stables, 5 elevators, several stores. Pop. 500.

SPECIAL OPPORTUNITIES.—Grist mill, brickmaker (quantity of clay in neighborhood). Write Sec. Bd. Trade.

INDUSTRIAL OPPORTUNITIES

BALGONIE, on C.P.R. main line, 18 miles e. of Regina. Hotel, Commercial \$2. 2 churches, school, bank. 4 elevators, lumber yard, 2 livery stables, garage, laundry, race track and hall grounds, flour mill, skating rink, 2 implement warehouses. Alt. 2,187. Pop. 368.

SPECIAL OPPORTUNITIES.—Creamery, flax mill. Write the Sec.-Treas., Balgonie.

BATTLEFORD, at confluence of Battle and Saskatchewan Rivers, with 6 steel bridges; 90 miles w. of Saskatoon, 254 miles e. of Edmonton, on C.N.R. and G.T.P. Hotels, Windsor, King George \$2.50, Queen's \$1.50, Empire \$1.50. 4 churches, College of Sask. high school, 2 public schools, 3 banks. Judicial centre, court house, Land Titles office, town hall, Dom. Lands office, meteorological office, R.N.-W.M.P. Div., 22nd Co. Sask. Light Horse. Elevator (20,000 hush.), creamery, cement brick plant, machine shop, 2 weekly newspapers. Centre of a fine mixed farming country, with clay for brick and tiles. Town owns electric light, water and sewerage systems. Streets 99 ft. wide. Gun Club, assoc. football, baseball, ice hockey, skating and curling rinks, cricket, 3 tennis clubs. Very good duck and prairie chicken shooting; fishing. Alt. 1,602. Pop. 1,500.

NOTE.—Additional ry. lines expected:—G.T.P. Saskatoon-Battleford, bonds guaranteed by Govt. and Dominion N.W.R. Regina-Fort Mackay via Battleford chartered.

SPECIAL OPPORTUNITIES.—Municipal flour mills for sale (100 hhls.), perfect condition, biscuit and candy factory, wholesale hardware, dry goods, packing plant. Free sites. See under "Agric. and Fruit Districts." Write for free literature to Sec. Bd. Trade.

BIGGAR, 527 miles w. of Winnipeg, 60 miles w. of Saskatoon, 268 miles e. of Edmonton on G.T.P. main line (div. pt.) and Biggar-Battleford branch; on C.P.R. Winnipeg-Edmonton line. Hotels, Biggar, Empire \$2. 3 churches, \$15,000 school, bank. Town owns water system. 3 elevators, 6 implement agents, 2 liverys, 14 car-loading platforms, auto livery, 3 lumber yards, sash and door factory, wholesale oil distributing plant, wholesale grocery and supply house for G.T.P., 4 general stores, 14 others, newspapers and printing office. Brick clay, sand and gravel. A grain-growing, mixed farming and ranching district. Mineral lake 2 miles s. Good shooting. Pop. 900.

NOTE.—G.T.P. Biggar-Calgary line built as far as Lovernna.

SPECIAL OPPORTUNITIES.—Flour and grist mill, oatmeal mill, meat packing plant, machine shop, brick yard, cement block plant, wholesale grocery, lawyer, tinsmith and plumber. Write Sec. Bd. Trade.

BREDENBURY, 250 miles w. of Winnipeg. Div. pt. on C.P.R. Hotel, Grand Central \$2.00. 3 churches (Pres., Meth., R.C.), school, bank. Pop. about 400. Write Sec. Bd. Trade.

SPECIAL OPPORTUNITIES.—Flour mill, creamery, cement block plant. Write Sec. Bd. Trade.

BROADVIEW, Div. pt. on C.P.R. main line, 265 miles w. of Winnipeg. Hotels, Broadview, King Edward. 5 churches bank. Industries, 2 elevators (55,000 bush.), 2 oil cos., fruit warehouse, elec. light plant, brick plant, telephone, 2 lumber yards, newspaper, 2 livery stables, wholesale warehouse, 5 stores. Boating and fishing nearby. Alt. 1,960. Pop. 1,000.

SPECIAL OPPORTUNITIES.—Flour and grist mill, creamery, pork packing, dentist, doctor, steam laundry, real estate agent, blacksmith. Write Sec. Bd. Trade.

CANORA, on C.N.R. main line and Russell-Rossburn br.; and on Canora-Sturgis br.; and on G.T.P. Regina-Hudson Bay br.; 303 miles n.w. of Winnipeg, 193 miles n.e. of Regina. Hotels, Imperial, Canora. 4 churches, public school, 2 banks, 6 elevators (200,000 bush.), newspaper. Agric. Society and exhibition grounds (160 acres), race track, grand stand; \$50,000 hospital, \$40,000 municipal elec. light plant (rate 12c. per k.w.h. net). \$100,000 municipal water works system from springs. Flour mill, egg-preserving industry, creamery, 2 lumber yards, 3 liveries, 3 motor liveries, 9 general stores, 2 hardware stores, 2 oil warehouses. A mixed farming district. Pop. 1,200.

SPECIAL OPPORTUNITIES.—Mixed farming, brick yard, fine clay deposits, cereal mill, meat packing plant, lawyer, shoe store, dry goods store. New industries assisted in proportion to capital invested, by cheap sites, low taxes and elec. power. See under "Agricultural Districts." Write for free pamphlet to Sec.-Treas. Bd. Trade.

CARLYLE, on C.P.R. Arcola br., 123 miles s.e. of Regina, and C.N.R. (div. point) Maryfield and Lethbridge br. Local and long dist. telephone. Hotels, Del Monte, Carlisle House. 3 churches (Ang., Pres., Meth.), public and high schools, bank, pool room. Industries, 5 elevators (200,000 bush.), 1 lumber yard, soft drinks, newspaper, stores, 2 garages, 2 liveries. Summer resort at White Bear Lake, 8 miles n., with good fishing, hotel and 40 summer cottages. Alt. 2,064. Pop. 458.

SPECIAL OPPORTUNITIES.—Flour mill, creamery, wholesale houses, brick yard, electrician, gents' furnisher, rink. Write Sec. Bd. Trade.

CARNDUFF, on C.P.R. Estevan br., 106 miles s.w. of Brandon, 12 miles n. of International Boundary. Hotel, Avonmore, \$2. 4 churches, high and public schools, town



Sheep Ranching is carried on as in Alberta; Flocks vary from 2,000 to 4,000. The rise in the price of wool has greatly stimulated the industry. See pages 18, 19

hall, opera house, newspaper, court house, club, bank, 5 elevators, creamery, sash and door factory, 2 auto repair shops, 2 liverys, carriage shop, furniture dealer, 4 implement agents, 2 restaurants, 2 large general, 3 hardware and about 20 other stores. Public library. Town owns gas lighting and telephones systems, connecting with government telephones. A rich mixed farming district. Good water supply. Alt. 1,723. Pop. 600. Pop. of district, 3,000.

SPECIAL OPPORTUNITIES.—Planing mill, machine shop, steam laundry, photographer, furniture dealer, flour mill. See under "Agric. and Fruit Districts." Write Sec. Bd. Trade.

CRAIK, on C.N.R. Regina-Saskatoon-Prince Albert branch, 73 miles n. of Regina, 87 miles s. of Saskatoon. Telephone. Hotels, Waldorf \$2, European \$1.50. 3 churches (Ang., Pres., Meth.), public school, agricultural fair grounds with half-mile track, town hall, tennis courts, skating rink, 2 banks, newspaper, 4 elevators (145,000 bush.), 2 livery stables, garage, 3 lumber yards, oil distributing warehouse, 4 implement warehouses, general and hardware stores, feed mill, bakery. Good duck and prairie chicken shooting. Pop. 435. Write Mgr. Union Bank.

DAVIDSON, on C.N.R. Winnipeg, Regina and Prince Albert line, 91 miles n.w. of Regina. Hotels, Great West, Davidson. 3 churches (Ang., Pres., Meth.), 1 brick school, municipal hospital. Town owns elec. light and power plant: rate, 15c. 2 banks. Centre of magnificent wheat district. Pop. 520.

SPECIAL OPPORTUNITIES.—Brick making, mortgages. Write Mgr. Royal Bank.

DUCK LAKE, on Duck Lake, 211 miles n. of Regina, 46 miles n. of Saskatoon, 38 miles s. of Prince Albert, on C.N.R. Regina-Prince Albert line. Hotels, King's \$2, Allee's. 2 churches (Ang., R.C.), public and R.C. schools, Indian school. Town hall, agric. fair grounds, race track, opera house. Sub-agency Dom. Lands. Elec. light, bank, elevator, stock yard, oil supply station, flour mill, 2 lumber yards, woodworking shop, 2 liverys, auto garage, 4 implement agents, 2 restaurants, drug store, 6 general stores, several others. Lumber is plentiful. A grain-growing, mixed farming and stock-raising country. Fishing and hunting. Pop. 800.

SPECIAL OPPORTUNITIES.—Creamery, machine shop, dentist, laundry. Write Sec. Bd. Trade.

ELBOW, on South Saskatchewan River and C.P.R., 75 miles n.w. of Moose Jaw. Hotel, Kings. 3 churches (Pres., Ang., Luth.), school, bank, acetylene light system, 4 elevators, stock yards. Pop. 475. Write Sec. Bd. Trade.

rise in the price of wool has greatly stimulated the industry. See pages 18, 19

INDUSTRIAL OPPORTUNITIES

ESTEVAN, on Souris River, on C.P.R. Soo-Spokane line, terminus of Estevan Sec., giving direct connection with Winnipeg, 290 miles e., on C.N.R., connecting with all main lines. 145 miles s.e. of Moose Jaw. Hotels. International. Emplre \$2.50, Clarendon \$2, Windsor and Talbot. 8 churches, 3 public schools and collegiate institute 3 hanks, \$40,000 post office, \$20 000 town hall municipal elec. light plant, up-to-date waterworks, sewerage and fire department, Sask. Govt. coal testing plant, 6 elevators (215 000 hush.), flour mill, 3 brick plants, telephone, 3 lumher yards, 2 newspapers, 3 livery stables, steam laundry, 2 garages 3 distributing implement warehouses. Estevan Coal and Brick Co. employ 125 men. Maple Leaf Mines, l.t.d. at Shaw, 5 miles. Dominion Lands office. Alt. 1,860. Pop. 3,500.

SPECIAL OPPORTUNITIES.—Pottery, brick and cement plants, furniture, paper mill, flour mill. Cheap fuel available. See under "Agric. and Fruit Districts." Write Publicity Commissioner, Bd. Trade.

FRANCIS, on C.P.R. Arcola branch, 40 miles s.e. of Regina. Pres. church, public school, hank. Industries, 5 elevators (118,000) hush., waterworks system, telephone, garage, 2 lumher yards, 2 general stores, 4 implement agents, blacksmith shop, 2 livery stables. Pop. 400.

SPECIAL OPPORTUNITIES.—Flour and oatmeal mills, hotel, jeweller, cement works shoe shop, dentist, furniture store, brick yard, dressmaker, grist mill. Write Mgr. Bank of Hamilton.

GOVAN, 70 miles n. of Regina, 100 miles s.e. of Saskatoon, on C.P.R. Hotel, Silver Plate \$2 up. 4 churches (Ang., Meth., Pres., R.C.), school, town and fire hall, skating and curling rink, agric. and recreation park, race course, 2 hanks. Town owns elec. light system. 1,000 h.p. available, 2 restaurants, machine shop, garage, sash and door factory, 2 lumher yards, 2 liveries, printer, 3 general stores, 12 others. Summer resort at Arlington Beach on Last Mountain Lake (15 m.). Boating, fishing, tennis, hasehall, golf, cricket, etc. Pop. 750.

SPECIAL OPPORTUNITIES.—Land investments, dentist. Write Sec. Bd. Trade.

GRENFELL, on C.P.R. main line, 280 miles west of Winnipeg. Hotel, Granite. 6 churches, public and high schools, hank, 6 elevators (210,000 hush.), elec. light, grist mill, flour mill, telephone, 2 lumher yards, newspaper, armory. Alt. 1,957. Pop. 709.

SPECIAL OPPORTUNITIES.—Butter and cheese factory, brick yard, improved and wild farm lands, first mortgages on farms and chattels. Write Sec. Bd. Trade.

GULL LAKE, on main line C.P.R., 144 miles west of Moose Jaw. Hotels, Lakeview, Clarendon \$2. 4 churches (R.C., Meth., Pres., Ang.), public school, 2 banks, 5 lumber yards, 5 livery stables, several stores, Elec. Light Plant owned by private co., 7 elevators, 5 restaurants, sawb and door factory, 2 parks. Pop. 1,200.

SPECIAL OPPORTUNITIES.—Flour mill, steam laundry. Write Sec. Bd. Trade.

HANLEY, on C.N.R. Winnipeg, Regina and P. Albert line, 122 miles n.w. of Regina, 38 miles s.e. of Saskatoon. Hotel, Saskatchewan. Chartered private bank, 4 churches, 1 school, with high school dept., \$30,000 municipal hall, 5 elevators (150,000 bushels). Alt. 1,869. Pop. 400.

SPECIAL OPPORTUNITIES.—Flour mill, jewellery store, furniture store, splendid farm lands adjoining. Write Sec. Bd. Trade.

HERBERT, on C.P.R. main line, 82 miles w. of Moose Jaw. Hotels, Commercial, Herbert, \$2.00. 5 churches, six-room public school, 2 banks. Sub-agency Dom. Lands, Agric. Society, \$11,000 town hall, fire hall, elec. light, rural, local and long distance telephones, rink, 5 elevators (140,000 bush.), 3 lumber yards, 3 liverys, 3 motor liverys, flour mill (100 bbls.), and elevator (15,000 bush.), laundry, 5 general stores, 2 doctors, restaurant, weekly newspaper, citizens' band. Pop. (Police Census, May, 1913), 1,002.

SPECIAL OPPORTUNITIES.—Brick yard, creamery, dentist, veterinary surgeon. See under "Agric. Districts." Write Sec. Bd. Trade.

HEWARD, on C.P.R., Arcola branch, 80 miles e. of Regina. Hotel, Heward. 3 churches, school. Local and long dist. telephones. 3 elevators (83,000 bush.), chopping mill, machine shop, general repair shop, 1 lumber yard. 3 implement warehouses, garage, blacksmith shop, boarding house, livery stable, and 7 stores. Pop. 600.

SPECIAL OPPORTUNITIES.—Flour mill, druggist, doctor, newspaper, dentist. Write Agent C.P.R.

HUMBOLDT. Central division on C.N.R. main line, 425 miles w. of Winnipeg, 426 miles e. of Edmonton. Hotels, Arlington, Windsor, Humboldt. 5 restaurants. 3 churches, \$80,000 public school, separate and high schools, business college, 3 banks. Govt local and long dist. telephones. Judicial centre with court house, etc. Resident Judge. Land titles registration district, with land titles office. Dom. Lands office, customs clearing house, municipally-owned public utilities, city hospital (30 beds), elec. light system, waterworks, fire brigade, recreation grounds, park, curling and skating rinks, tennis court, dramatic club, race track, summer and winter sports. C.N.R. yards with 10 miles of tracks,

INDUSTRIAL OPPORTUNITIES

flour mill (100 hhls.), 5 elevators (150,000 hush.), creamery, cold storage, wood mfg. co., 5 lumber yards, 4 implement warehouses, 2 oil warehouses, 4 dairy farms, 4 laundries, newspaper, machine shop, 2 auto garages, 4 liveries, 6 general stores, over 20 others. Centre of a fine mixed farming district. Deposits of clay, sand and gravel. Summer resort with medicinal waters at Humboldt beach, boat houses, bathing, pavillon, etc. Pop. 2,400.

SPECIAL OPPORTUNITIES.—Bricks and clay products, cement works, meat packing, fruit and vegetable cannery, steam laundry, oatmeal mill, brewery, tannery, cold storage, manufacture of soap, starch, shirts and overalls, alcohol, cheese, board and paper boxes, twine and cordage, linseed oil, hoots and shoes, biscuits, bags, tents and mattresses, machine repair shop and garage, wholesale houses, distributing warehouses, machine shop, building contractors, departmental stores, tinsmith, express delivery. See under "Agric. and Fruit Districts." For free literature and information, write Sec. Bd. Trade.

IMPERIAL, on C.P.R., 83 miles n. of Regina. Hotel, Imperial \$2. 2 churches, school, bank, machine shop, 3 general stores, 2 lumber yards, restaurant, laundry, hardware store. Good fishing and shooting. Pop. 325.

SPECIAL OPPORTUNITIES.—Furniture store, photographer and tailor, jeweller. Write Sec.-Treas. of Town.

INDIAN HEAD, on C.P.R. main line, 40 miles e. of Regina. Hotels, Imperial \$2, Balmoral \$1.50. 4 churches, high school, 2 banks, 10 elevators (356,000 hush.), flour mill, elec. light plant, telephone, 2 lumber yards, newspaper, 3 livery stables, door and fanning mill factory. Dominion experimental farm and forestry farm situated here. Sewerage and waterworks systems. Fine town park. Alt. 1,924. Pop. 1,500.

NOTE.—Forestry offices and drill hall under construction.

SPECIAL OPPORTUNITIES.—Town offers inducements to new industries. Write Sec. Bd. Trade.

KAMSACK, at confluence of Assiniboine and White Sand Rivers, 279 miles w. of Winnipeg, div. point on C.N.R. main line. Hotels, King George \$2.50, Russell. 3 churches (Ang., Pres., R.C.), 2 large brick public schools, public library, athletic and fair grounds, half-mile race track, picture theatre, bank, newspaper, 3 elevators (105,000 hush.), brick yard, 2 lumber yards, 5 implement agents, 3 liveries, stock yards, wholesale oil distributing plant, 6 general stores, 2 hardware and about 15 others. Municipal elec. light plant, water and sewerage systems, cement sidewalks. Unlimited brick clay 1 mile from town, also sand, gravel and limestone. Spruce,

cedar and birch 15 miles n.e. of town. The commercial and distributing centre of a rich mixed farming district, shipping large quantities of hogs and cattle. Good fishing, shooting and hunting. The Dominion Govt. have established a summer resort at Island Lake (14 miles); good boating and bathing, fine sandy beach. Tennis, baseball, gun and rifle and football clubs. Pop. 1,450.

SPECIAL OPPORTUNITIES.—Sash and door factory, pork-packing plant, oatmeal, flour and flax mills, concrete block plant, machine shop, steam laundry, creamery, cheese factory, real estate. Abundant water power from Assiniboine River awaiting development. Building residences, apartment house and store buildings—great demand. Liberal inducements in taxation, sites, water and light to new industries. Write Town Clerk.

KERROBERT, 220 miles n.w. of Moose Jaw, 227 miles s.e. of Edmonton, 145 miles s.w. of Saskatoon. Div. junc. and terminal pt. on C.P.R. Minneapolis-Edmonton direct line, Moose Jaw-Lacombe br., and Kerrobert-Cutknife br. Hotels, King George, Windsor \$2. 3 churches, \$30,000 brick school, fire hall, municipal water-works, 2 banks, 2 parks, exhibition grounds and race track, court house, sub-agency Dom. Lands, \$9,000 skating and curling rink, newspaper, moving picture theatre. Judicial centre. 4 elevators, cement blocks plant, steel and iron works, machine shop, Govt. creamery (cap. 18,000 lbs. of butter per week). 5 implement agents, 3 livery, auto livery and garage, 5 lumber yards, 2 oil distributing plants. Calgary Brewery Co.'s wholesale distributing plant, 4 general stores, 15 others. 2 wholesale fruit houses. Deposits of sand and gravel. A rich grain-growing and mixed farming district. Duck and goose shooting, tennis, lacrosse, gun, baseball and hockey clubs. Pop. 1,100.

NOTE.—C.P.R. br. to Suffield on main line chartered.

SPECIAL OPPORTUNITIES.—Sash and door factory, flour mill, linseed oil mill, steam, laundry, cereal mill. Trackage sites offered to wholesalers, distributors and jobbers at cost. Other liberal inducements. See under "Agriculture and Fruit Districts." Write Sec. Bd. Trade.

KINDERSLEY, div. pt. on C.N.R. (Sask.-Cal.-Goose Lake br.), 126 miles s.w. of Saskatoon, 200 miles e. of Calgary. Hotels, Seymour, Kindersley \$2. 4 churches (Ang., Pres., Meth., R.C.), \$30,000 public school, water and electric light systems, theatre, 2 hospitals, 2 banks, 4 elevators (120,000 bush.), 3 lumber yards, 4 livery, 2 garages, 2 newspapers, 5 implements warehouse, 3 oil cos.' distributing warehouses, 5 general stores, harness maker. Assoc. football, hockey and baseball clubs, turf club. Sub-agency Dom. Lands office, judicial

INDUSTRIAL OPPORTUNITIES

centre, agricultural society, volunteer fire brigade, local and long distance telephones. Assessment, 1914, \$1,500,-000. Grain district, flax and wheat. Pop. 1,223.

SPECIAL OPPORTUNITIES.—Flour mill, machine shop, woodworking establishment, 50 h.p. available at 7c. per k.w., linseed oil mill, brick yard, shoemaker, market gardens, farm lands. Write for free booklet to Sec. Bd. Trade.

LANGHAM, on C.N.R., 25 miles n.w. of Saskatoon. Hotels, Western, Central \$1.50, \$2.00. 5 churches (Ang., R.C., Pres., Mennonite), public school, 2 banks. Town owns elec. light plant. Pop. 500. Write Sec. Bd. Trade.

LANIGAN, on C.P.R., 70 miles e. of Saskatoon. Hotel, Lanigan \$2. 3 churches (Ang., Pres., Meth.), public school, telephone (local and long distance), town hall, 2 banks, 3 elevators (95,000 hush.), Govt. Co-operative Creamery, oil distributing warehouse, dentist, doctor, lumher yard, 2 livery stables, newspaper, race track, athletic ground. Water piped into town from 4 miles distant by C.P.R., for railroad purposes. Centre of fine farming district. Pop. 500.

SPECIAL OPPORTUNITIES.—Flour mill, sash and door factory, haker. Write Pres. Bd. Trade.

LASHBURN, on C.N.R. main line, 169 miles e. of Edmonton. Local and long dist. telephones. Hotel, Imperial \$2. Bank. Fine Ang. church (private gift), rectory and cottage hospital, Meth. and Pres. churches, public and high school, bank. Elec. light plant, restaurant, newspaper, laundry, 4 elevators, chopping mill, 2 lumher yards, livery with motor car, 3 implement agencies. Pure-bred stock farm in neighborhood. Fine grain-growing and mixed farming district. Brick clay deposits nearby. Pop. 400.

SPECIAL OPPORTUNITIES.—Creamery, flour mill, brick yard, cement works, dairy. Write Sec. Bd. Trade.

LEMBERG, on C.P.R., 65 miles from Regina. Hotel, Minto. 5 churches (Pres., Meth., Bapt., R.C., Lutheran), bank, machine shop. Shipping centre for large grain-growing district (over one million hush. shipped in 1914). Summer Resort at Katepwa Lake, 25 miles. Pop. 500.

SPECIAL OPPORTUNITIES.—Flour mill, brickmaker. Write Sec. Bd. Trade.

LIPTON, 65 miles n.e. of Regina, on C.P.R. Pheasant Hills hr. Dom. Ex. Tel. C.P.R. Boarding house \$2 to \$2.50. 2 churches, synagogue, public school, bank, 13 stores. A grain-growing and mixed farming district. Pop. 300. Write Sec.-Treas. of Village.

LLOYDMINSTER (the original Barr Colony town), on C.N.R. main line, 170 miles e. of Edmonton, 200 miles w. of Saskatoon, on border line of Saskatchewan and Alberta. Hotels, Royal George, Britannia, Alberta, all \$2. 5 churches (Ang., Pres., Meth., Bapt., R.C.), 2 public schools, 2 banks, 2 concert halls, firehall, immigration hall, Exhibition grounds with race course. Water supply from good wells. 2 flour mills (125 hbls. and 25 hbls.), theatre, Govt. creamery, electric power plant, cement brick works, 3 livery and motor, 3 lumber yards. Headquarters 22nd Saskatchewan Light Horse. \$40,000 public offices building. Local branch of Overseas Club have comfortable clubroom. Fine shooting: Prairie chicken, partridge, wild duck, geese, rabbits. Surrounded by good grain-growing and mixed farming district, which has won outright the \$1,500 Colorado Trophy (open to the world) for oats. Summer resort at Three-Mile Lake. Pop. 800.

SPECIAL OPPORTUNITIES.—Steam laundry, sash and door factory. Electric power at 15c. per k.w. hour. 8% first mortgages. Write Publicity Commissioner, Bd. of Trade.

LUMSDEN, on C.N.R. Win., P. Albert and Regina line, in Qu'Appelle Valley, 20 miles n.w. of Regina. Hotel, Lumsden \$2. 3 churches, public school, 2 banks, 4 elevators (117,000 hush.), opera house, local telephone, electric light plant, flour mill, newspaper. Centre of fine grain section. Good spring water. Last Mountain Lake, 10 miles distant. Alt. 1,620. Pop. 900.

SPECIAL OPPORTUNITIES.—Foundry and machine shop, brick yards, cement block factory. Good sand and gravel close by. Write Sec. Bd. Trade.

MAPLE CREEK, on Maple Creek. On C.P.R. main line, 64 miles e. of Medicine Hat. Hotels, Commercial, Jasper, Maple Leaf. 4 churches, public school, 2 banks, town hall, armory, park, Dom. Lands office, agricultural grounds, race track, hospital, opera house, 4 elevators, flour mill, 4 implement warehouses, 4 lumber yards, newspaper, 5 livery stables. Water and sewerage systems, elec. light plant. Mixed farming district. Free homesteads available. Alt. 2,495. Pop. 2,000.

NOTE.—Oil and gas wells to be drilled. Franchise granted for supplying town with gas.

SPECIAL OPPORTUNITIES.—Mineral water factory, brick yard, sash and door factory, implement factory, skating rink, real estate investments, farm mortgages. Write Sec. Bd. Trade.

MELFORT, 500 miles n.w. of Winnipeg, 100 miles n.e. of Saskatoon; freight terminal point of C.N.R. Winnipeg to Prince Albert line. Hotels, Melfort, Ozark, Humboldt

NORTH BATTLEFORD, SASK.

THE OPEN GATEWAY TO THE LAST GREAT WEST



A Typical Farmer's Home in the North Battleford District.
There are thousands of acres of wonderful grain-growing country tributary to North Battleford. See descriptions of town and district on pages 30 and 51

Write Commissioner Board of Trade, North Battleford, Sask.

\$1.50 up. 4 churches (Ang., Pres., Meth., Hornerite), new \$60,000 high school. New Government building containing post office, customs port of entry and armory. Town hall, Dominion Lands office, park and agric. fair grounds, agric. building, half-mile race track, hospital and nurses' home (22 beds). Town owns electric light, waterworks and sewerage systems, 2 newspapers, theatre, photographer, 3 banks, 5 elevators (135,000 bush.), 2 machine shops, chopping mill, Government creamery, sash and door factory, 3 lumber companies, 4 implement agents, 3 liverys, 2 auto garages. Wholesale oil distributing plant, 5 general stores, 4 hardware and about 25 others. Unlimited lumber within 40 miles, spruce, tamarac, black and white poplar. Abundance of gravel in immediate vicinity. Distributing centre of rich and extensive mixed farming district, shipping large quantities of hogs, cattle and horses. Controls trade of Carrot River Black Loam Belt. Good shooting. Pop. 1,500.

NOTE.—C.N.R. Humboldt to Melfort and Vonda to Melfort under construction. C.N.R. Melfort to Le Pas, Canora to Melfort and Thunderhill to Melfort, chartered and bonds guaranteed by Provincial Govt. C.P.R., Sheho to Melfort line chartered and surveyed.

SPECIAL OPPORTUNITIES.—Pork packing plant, electrical supply house, foundry, brick yard, cement block plant, saw mill. Inducements to industries and wholesalers. See under "Agricultural Districts." Write for illustrated literature and booklets to Sec. Bd. Trade.

MELVILLE, on G.T.P. main line and Melville-Regina br., 279 miles w. of Winnipeg, 98 miles n. of Regina. Pass. and freight div. point. G.T.P. shops. Hotels, Windsor \$2 50, Waverley, Commercial \$2. Centre of judicial district. 7 churches, 4 public schools, Lutheran College, Government telephone system, municipal hospital, 2 parks, skating and curling rink, electric light and waterworks, fire hall, 2 banks. 2 oil distributing warehouses, 2 elevators (65,000 bush.), flour mill (125 bbls.), Govt. creamery. Nearest point on G.T.P. main line for Qu'Appelle Valley, providing good shooting, boating and fishing. Pop. (Sworn Town Census, May, 1913), 3,050.

NOTE.—Municipal sewerage system under construction.

SPECIAL OPPORTUNITIES.—Steam laundry, linseed oil factory, cheese factory, wholesale distributing houses. Inducements to new industries. See under "Agric. Districts." Write Sec. Bd. Trade.

MILESTONE, on C.P.R., 54 miles s.e. of Moose Jaw. 6 elevators (204,000 bush.), electric light plant, telephone, 2 lumber yards, 2 banks, newspaper, livery stable, confectioner, baker, several stores. Pop. 500.

INDUSTRIAL OPPORTUNITIES

SPECIAL OPPORTUNITIES.—Flour mill, baker, dentist. Write Agent C.P.R.

MONTMARTRE, 57 miles e. of Regina, 180 miles w. of Brandon, on C.N.R. Hotel, Grand, \$2.50. 2 churches, fire hall, jail, council chamber, skating and curling rink, bank. Town owns water system. Auto garage and repair shop, creamery, cheese factory, 10 stores. Lake Chapleau 2 miles east. Assiniboine Indian Reserve 4 miles north, noted for scenery. Good duck and prairie chicken shooting. Pop. 450.

SPECIAL OPPORTUNITIES.—Flour mill, sash and door factory. Write Sec.-Treas.

MOOSE JAW, on Moose Jaw River, 398 miles w. of Winnipeg, 420 miles e. of Calgary, div. pt. on C.P.R. (50 miles of trackage in yards), on G.T.P. and C.N.R. Hotels, Royal George, Empress, Cecil, City \$2.00 up, and 4 others. Churches of all denominations, 9 schools, collegiate institute, 2 business colleges, library, city hall, court house, Land Titles office, 3 parks, electric street ry., 2 good hospitals, Dom. Govt. elevators (4 million bushels), \$140,000 theatre. City owns light and water systems and sewerage with incinerator plant. Electric power at 1½c. to 1¾c. per k.w. to manufacturers, 3c. to 5c. for domestic use, 3,000 h.p. available. Banks, 11 chartered, 1 private. 22 wholesale houses. Industries include sashes and doors (2), flour mills (2), lumber cos., shattoir, faced bricks, pressed bricks, tiles and pottery, linseed, bridge and iron works. Centre of a rich wheat-growing district. Alt. 1,767. Pop. about 23,500.

NOTE.—G.T.P. under construction to n.w. to connect with Biggar-Calgary line, 100 miles in operation. New C.P.R. line built south to Assiniboia. Grey Nuns are building new fireproof hospital, 150 beds.

SPECIAL OPPORTUNITIES.—Flax and flour mills, wholesale hardware, tractors, binder twine factory, farm machinery warehouse. Real estate investments. Tannery, soap factory. Cheap power. Other inducements on application. For free booklet, write Sec. Bd. Trade.

MOOSOMIN, inc. as town in 1889, on main line of C.P.R., 87 miles west of Brandon. Hotel, Queen's \$2 up. 8 churches, Government creamery, 2 banks, public and normal schools, collegiate institute, school of music, centre of judicial district with resident Judge. Port of customs, Land Titles office, general hospital, provincial gaol. District headquarters for R.N.W.M.P. and "A" Squadron 16th Light Horse. Centre of large mixed farming district. Pop. 1,400.

SPECIAL OPPORTUNITIES.—Steam laundry, brick and clay products, machine shop, flour mill, oatmeal mill, elec-

tric light plant. Improved lands near town for sale at \$10.00 to \$20.00. Write Sec. Bd. Trade.

MORSE, on C.P.R. main line, 71 miles w. of Moose Jaw. Hotels, Elkbarn, Royal \$2. 2 churches (Ang., Metb.), public school, elec. light, 7 elevators (230,000 bush.), 2 banks, 4 lumber yards, livery, 3 motor garages, 7 general stores, 2 hardware, bakery, 2 doctors. A grain-growing and mixed-farming district. Good prairie chicken and duck hunting. Pop. 850, and large tributary pop. of English, Americans and Germans.

SPECIAL OPPORTUNITIES.—Flour mill, creamery, cheap farm lands in district, farming, market gardening. See under "Agric. Districts." Write Sec. Bd. Trade.

NOKOMIS, at junction G.T.P. main line and C.P.R. Winnipeg to Saskatoon hr. Hotels, Nokomis, Dominion, Nokomis House \$2. 2 churches, 1 school, 4 elevators (65,000 bush.), 3 lumber yards, newspaper, 2 machine shops, 2 banks, 2 garages, flour mill. Pop. 500.

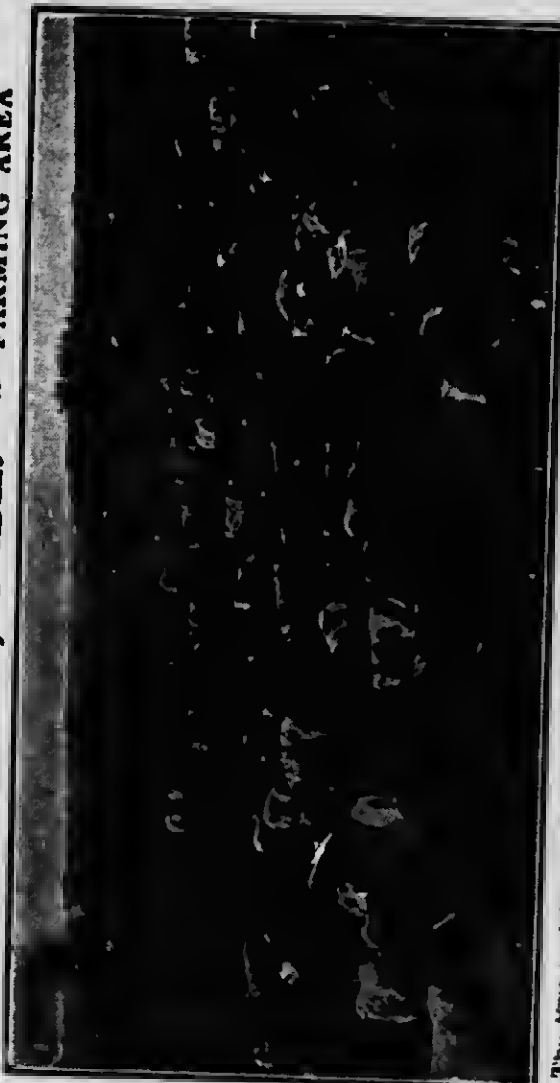
SPECIAL OPPORTUNITIES.—Creamery, drug store, stationer.

NORTH BATTLEFORD, on C.N.R. main line, Winnipeg to Edmonton. Terminus of Prince Albert hr. and Jack Fish Lake br., 254 miles e. of Edmonton, at junction of Saskatchewan and Battle Rivers. Div. point C.N.R. Also reached over G.T.P. via Biggar transfer track, finished July, 1916. Long dist. telephone. Hotels, Auditorium \$2.50, Saskatchewan, Annex, Clarendon, Avenue, Metropole \$2 up. 5 churches and Salvation Army, public and separate schools, \$150,000 collegiate institute, \$50,000 Govt. bldg., armory, 5 banks, hospital (60 beds), flour mill (180 bbls.), Industries, sashes and doors, aerated waters, bricks, creamery, 2 elevators. City owns electric light and power, water and sewerage systems and market. Fine summer resort at Jack Fish Lake, 21 miles n., with numerous summer cottages. Pop. 3,145.

SPECIAL OPPORTUNITIES.—Flour mill, linseed oil mill, packing plant, tannery, soap works, harness works, etc., distributing warehouses. Factory and warehouse sites on trackage at low cost. See under "Agric. and Fruit Districts." For booklet and city map, write Commissioner Bd. of Trade.

OUTLOOK, on e. bank of South Saskatchewan River, 120 miles n.w. of Moose Jaw; div. pt. on C.P.R. Minneapolis-St. Paul-Moose Jaw-Edmonton direct line. Hotels, Outlook, Avenue \$2.50. 3 churches and R.C. services, \$30,000 school. Municipal power house and fire hall with high pressure system, town hall, 20-acre park, 40-acre exhib. grounds with race track and covered grand stand.

PRINCE ALBERT, SASK. CENTRE OF THE MIXED FARMING AREA



The Prince Albert District in 1914 was able to make an offer to the Government to winter 10,000 head of cattle from distressed districts of the province. Prince Albert District has never experienced a crop failure. 6000 good homesteads open. Improved lands at reasonable prices. Read descriptions of *Prince Albert and the surrounding district*, on pages 51 and 53

Write for full particulars to

SECRETARY, BOARD OF TRADE, - PRINCE ALBERT, SASK

Town owns elec. light and water systems. Banks, 2 chartered. 5 elevators (150,000 bush.), flour mill (150 bbls. per day), 2 auto repair shops, 3 lumber yards, 2 implement agents, 2 liverys, 3 general stores, several others, newspaper, moving picture theatre. Deposits of sand and gravel. A rich grain and mixed farming district. Beautiful scenery on Saskatchewan River, shooting, fishing, boating, bathing. Abundant pure water pumped direct from river. Pop. 1,000.

NOTE.—Contracts let for C.P.R. Outlook-Empress-Bassano branch. Norwegian Lutheran College under construction.

SPECIAL OPPORTUNITIES.—Wholesalers and jobbers in any line, brewery, oatmeal mill, flax mill, another flour mill, steam laundry, first-class restaurant, veterinary surgeon, general store. Inducements to manufacturers and wholesalers on application. Write Sec. Bd. Trade.

OXBOW, beautifully situated on a hill above the Souris River, on C.P.R., 41 miles from Estevan, 120 miles w. of Brandon. Hotel, Alexandra. 4 churches, public and high schools, 2 banks, 5 elevators (200,000 bush.), lumber yard, Govt. creamery, newspaper, restaurant, 2 livery stables and several stores. Alt. 1,895. Pop. 850.

NOTE.—Town to instal elec. light plant.

SPECIAL OPPORTUNITIES.—Flour and feed mill. Write Mgr. Union Bank.

PERDUE, 42 miles w. of Saskatoon, 329 miles e. of Edmonton. 519 miles w. of Winnipeg. On C.P.R. Winnipeg-Edmonton line; G.T.P. main line at Leney, 1¼ m. distant. Hotel, Perdue \$2. 3 churches (Ang., Pres., Meth.), brick school, bank. Telephone system, town hall, agric. fair grounds, race track, skating rink, 4 elevators, newspaper and printing office, garage, 3 implement agents, 2 liverys, lumber yard, 5 general stores, 2 hardware, about 12 others. A rich grain-growing district, well suited to mixed farming. Chain of lakes 4 miles north affords good summer camping ground. Pop. 420.

SPECIAL OPPORTUNITIES.—Machine shop, creamery, cheese factory, tinsmith, dentist, boarding house. Write Sec. Bd. Trade.

PRINCE ALBERT, on N. Saskatchewan River, (542 miles n. w. of Winnipeg via Dauphin, 605 miles via Regina, 80 miles n. of Saskatoon), on G.T.P. and on 4 branches of C.N.R., radiating n., s., e. and w. to Big River, Regina, Winnipeg and North Battleford. Freight and Passenger boat service on North Saskatchewan River to Edmonton. Hotels, Avenue, Empress, Windsor, Merchants, St. Regis, Prince Albert, Queen's, Saskatchewan, Royal \$2.50 up. New R.C. Cathedral, Ang. Pro-Cathedral, 5 churches, 5 public schools, separate school, collegiate institute, husi-

INDUSTRIAL OPPORTUNITIES

ness college, ladies' college, convent, 2 hospitals, Govt. armory, labor temple. Permanent Land Show Building with tri-weekly public market. 8 banks. Municipally owned elec. light, waterworks, sewerage system, elec. power. Industries include 3 large lumber companies (cut in 1912-13 approx. 100 million feet B.M.), new and up-to-date creamery, brewery, 5 brick yards, 3 flour mills, 2 cold storage plants, abattoir and packing plant, 3 planing mills, Roman stone, boat factory, toys, saddlery works, culinary articles, extracts, etc., marble and granite works, 5 wholesale houses, theatre, 3 moving picture theatres, 1 daily and 2 weekly newspapers. Centre of Judicial district, provincial jail and penitentiary, Dominion Lands office, Customs office for district. Headquarters of R.N.W.M.P. for Central and Northern Saskatchewan. Distributing centre of rich mixed-farming district, noted for stock raising. Abundant brick and pottery clay in immediate vicinity. 2,000 sq. miles of spruce and poplar extend northwards from city. A picturesque city occupying fine natural townsites with boating, bathing, fishing, shooting, etc. 2 large natural parks. Alt. 1,432. Pop. (Police Census, 1914), 13,500.

SPECIAL OPPORTUNITIES.—Pulp and paper mills, furniture, box, woodenware, match, casket, heaver hoard and glass factories. Clay and ochre products, pottery ware, furriers, wood alcohol distillery, fish canning industry, cold storage plants, wholesale and distributing plants, abattoirs and packing plants. Poultry, cattle and dairy farming, market gardening, hutter and cheese factories. Write Sec. Bd. Trade.

QU'APPELLE, on C.P.R. main line, 32 miles e. of Regina. Hotel, Queen's \$1.50 and \$2. 2 restaurants. 4 churches, public and high schools, 2 banks, 4 elevators (120,000 bush.), town hall, fire hall, court house, electric light plant, moving picture theatre, lumber yard, newspaper, 2 livery stables, 3 implement firms, about 10 general stores. A large rural telephone centre. Town is surrounded by beautiful trees. Land here is rich clay loam, well adapted for mixed farming. Alt. 2,134. Pop. 850. Write Sec. Treas. of Town.

REGINA, capital of Saskatchewan, on C.P.R., C.N.R. and G.T.P. G.N.R. have running rights into Regina over G.T.P. line. Saskatchewan divisional pt. on all railways. 12 lines radiating in all directions. Hotels, King's, Kitchener (Eur. \$1.50), Wascana, Empress, Alexandra, Clayton, Grand, Palmer, European, Victoria, Vons, Waverley, Kremlin and a temperance hotel. 15 banks. Parliament buildings, R.N.W.M.P. headquarters, 2 hospitals, 11 public schools, 4 separate, collegiate, normal school, Regina College, St. Chad's College. Industries, flour mill, sashes

and doors, foundries, machine shops, brewery, soap, cement blocks, pressed bricks, elevators, wire and steel works, tanning, aerated waters, cigars, \$300,000 departmental mail order house. Central distributing point for farm implements and machinery. Ahattolr, petrified stone, mattresses. Elec. power at 1c. to 3c. per k.w.h., according to consumption. City owns stock yards, elec. light and water systems and street railway, all municipal franchises. Complete sewerage system. Well-paved streets. Large spaces reserved for parks. Principal distributing point for Middle West. Wholesale groceries, hardware, builders' supplies, etc. Neighborhood supplies wheat, oats, flax, cattle, etc. Government controlled creamery. Alt. 1,885. Pop. 45,000.

NOTE.—Contract let for natural gas supply. Imperial Oil Co. purchased 50 acres, on which is being erected \$500,000 oil refinery.

SPECIAL OPPORTUNITIES.—Manufacture of felt hats, straw hats, oil lamps, furniture, shirts, collars, linseed oil, cereal food, wholesale paint and glass, matches, huggles and wagons, paper boxes, biscuits, hinder twine, vinegar, glue, cement tile pipe, boots and shoes, flour mill, tanneries. Exceptional opening for large packing plant. City owns large number of lots in the wholesale and warehouse district, with spur tracks on 3 railways, to be sold to new industries at minimum value. See under "Agric. and Fruit Districts." Write Commissioner, Bd. of Trade Regina, Sask.

ROSETOWN, on C.N.R. (Goose Lake hr. Cal. & Sask. line), and C.P.R. (Moose Jaw-Edmonton line), 72 miles s.w. of Saskatoon. Hotels, Alhion \$2.50, Rosetown \$2. 4 churches (Ang., Pres., Meth., R.C.), public and high schools, municipal hospital, 5 elevators (140,000 hush.), flax decorticating mill, machine shop, elec. light, 2 hanks, newspaper, 4 lumber yards, 3 liverys, 2 garages, 3 oil distributing warehouses, feed mill, photographer, 2 laundries, 2 blacksmith's shops, restaurant, 6 implement warehouses, skating rink, theatre, gasoline fire engine and pump. A good grain country, wheat predominating. Pop. 800.

SPECIAL OPPORTUNITIES.—Flour mill, linseed oil mill, cement block works, planing mill, packing plant, wholesale distributing house. Write Sec. Bd. Trade.

ROSTERN, on C.N.R. Regina, Prince Albert line, 40 miles n. of Saskatoon. Hotels, Queen's Grange. 8 churches, private hospital, 2 schools, opera house, picture show, customs house, court house, 2 hanks, brick yard, 3 machine shops, 2 flour mills, Government telephone plant, gas plant, sash and door factory, 4 elevators, Government Experimental Farm. Pop. 1,500. Write Sec. Bd. Trade.

ROULEAU, on C.P.R., 32 miles s.e. of Moose Jaw. Hotel, Arlington. 4 churches (Ang., Pres., Metb., R.C.), 1 public school, 5 elevators (237,000 bush.), telephone, 2 banks, 2 lumber yards, newspaper, 3 livery stables, 2 restaurants, machine shop, oil storage tanks, municipal waterworks and electric light plant. Lawyer, dentist, 2 doctors, 2 private hospitals. Pop. 900.

SPECIAL OPPORTUNITIES.—Flour mill, oatmeal mill. Write Sec. Bd. Trade.

SALTCOATS, on Saltcoats Lake, on C.P.R. Winnipeg-Edmonton br. line, 17 miles s.e. of Yorkton. 2 temperance hotels. 3 churches, public and high schools, 2 banks, 3 grain elevators, 1 grist mill, cement block works, lumber yard, 3 livery stables, 1 garage, dentist, 1 restaurant, local and long dist. telephone, municipal elec. light works. Agric. Soc. holds annual fair. Skating rink, town band. Alt. 1,714. Pop. 700.

SPECIAL OPPORTUNITIES.—Milliner, creamery, packing factory, sash and door factory, brick yard (clay deposits $\frac{1}{2}$ -mile distant), photographer, lawyer. Write for free illus. booklet to Sec. Bd. Trade.

SASKATOON, on S. Saskatchewan River, on C.P.R. C.N.R. and G.T.P., 160 miles n. of Regina, 90 miles s. of Prince Albert, 335 miles e. of Edmonton, 466 miles w. of Winnipeg. Central geographical position gives absolute freight rate control of 48,000 sq. m. of distributing territory, embracing over 200 points on 2,225 m. of railway. Hotels, King George \$4 up, Flanagan, Empire \$2 and \$3, and 10 others. 17 churches, 12 large public schools, 4 of which cost \$156,000 each. Collegiate institute, court house, opera house, 6 moving picture theatres, customs house, Dom. Lands office, Land Titles office, 2 hospitals, 15 banks. Industries, Quaker Oats sole western plant (1,000 bbls. daily), brewery, tractors, garments, woodwork plants (3), 2 daily and 1 weekly newspapers, Dominion interior elevator (capacity 3,500,000 bush.), interior woodwork, brick plants (3), cement blocks, tents and mattresses, cigars (2), aerated waters, metal shingles and shingles, machine shops and foundries (2), nursery, etc. Over 200 wholesale houses. City owns Elec. light and power, street Ry., water and sewerage systems. Govt. automatic telephone. Seat of Provincial University. Agricultural College and Experimental Farm. Over \$2,000,000 already expended on buildings. Increase in number of students necessitated spending \$300,000 in 1914. 15 miles of street Ry. 437 acres city parks. 90 miles sewer and water mains. Unlimited supply of purest water. Modern filtration plant. 2 daily papers, 2 weekly. Lowest fire insurance rates in Saskatchewan. 5 bridges cross river in city. Pop. 113 in 1903. In 1915 about 22,000.

SPECIAL OPPORTUNITIES.—Packing and cold storage, flour and cereal mills, tannery, manufacture of soap, shoes, harness, biscuits, skirts, skirts and clothing, paints, automobiles, linseed mills, agric. implement assembling plants. Jobbing houses in all lines. Market gardening and poultry farming. Extremely cheap steam generated Elec. power. See under "Agric. and Fruit Districts." Write Commissioner, Bd. Trade.

SCOTT, 103 miles w. of Saskatoon, 224 miles e. of Edmonton, 569 miles w. of Winnipeg, on G.T.P. main line. Hotel, Gladys. 3 churches (Ang., R.C., Pres.), \$16,000 public school. Judicial centre. Town hall, Dom. Govt. Experimental Farm (560 acres), municipal hospital (40 beds), fire department, race track. Town owns elec. light and water systems. 2 banks, newspaper, 2 elevators (70,000 bush.), machine shop, 2 lumber yards, chopping mill, 2 implement firms, livery, auto livery, restaurant, 1 wholesale oil distributing plant. 9 retail stores. Abundant gravel and sand. A grain-growing district with mixed farming on the increase. Good shooting. Pop. 600.

SPECIAL OPPORTUNITIES.—Flax and tow mill, oatmeal mill, flour and feed mill, cheese factory. See under "Agric. and Fruit Districts." Write Sec. Bd. Trade.

SHAUNAVON, 224 miles w. of Weyburn. Div. point on C.P.R. Weyburn-Lethbridge branch. Hotels, Shaunavon, Kennedy. 5 churches, school, 3 banks, 9 lumber yards, 4 hardware stores, 5 restaurants, 7 general stores, wholesale house, 5 elevators, flour mill, cold storage. A wheat-growing and ranching country. Pop. about 1,200. Write Sec. Bd. Trade.

SHELLBROOK, 2 miles from Shell River, 28 miles w. of Prince Albert, junction pt. on C.N.R. Prince Albert-North Battleford and Shellbrook-Big River lines. Hotels, Shellbrook, Windsor \$2.00. 3 churches (Ang., Pres., R.C.), public school, town hall, fire station, recreation park, bank. Dom. Lands office, 3 elevators (100,000 bush.), creamery, flour mill, newspaper, restaurant, 7 implement agents, 2 restaurants, lumber yard, 3 liverys, 4 general stores, about 10 others. Neighborhood supplies large quantities of lumber. Brick clay, oil, sand and gravel are available. Pop. 527.

SPECIAL OPPORTUNITIES.—Brick yard, packing plant, oatmeal mill, pulp mill, tannery, veterinary surgeon, doctor, dentist, motor garage and repair shop. Write Sec.-Treas. of Shellbrook.

SINTALUTA, on main line of C.P.R., 53 miles e. of Regina. Hotel, Saskatchewan \$1.50. 3 churches, public school, 2 hotels, 5 elevators, telephone, lumber yard, planing mill, 3 stores, 3 implement firms, 2 blacksmiths, confectioner. Pop. 500.

SPECIAL OPPORTUNITIES.—Newspaper, veterinary surgeon. Write Sec.-Treas. of Town.

STOUGHTON, on C.P.R. Arcoia-Regina and Stoughton-Weyburn brs., 86 miles s.e. of Regina. Hotels, King Edward \$2, Stoughton \$1.50. Bank. 2 churches, 4-room school, town and fire hall, 5 elevators (175,000 bush.), 2 lumber yards, 2 liveries, newspaper, 3 hardware, 2 general stores. Good wheat districts. Pop. 500.

SPECIAL OPPORTUNITIES.—Grist mill, creamery. Farm lands at reasonable prices. Write Mgr. Bank of Ottawa.

STRASSBURG, on C.P.R., in the heart of Last Mountain Valley, 51 miles n.w. of Regina. Div. pt. of R.N.W.M.P. 12 miles from Last Mountain Lake. Hotels, Strassburg. Last Mountain. 5 churches, 1 brick school, 2 banks, town hall, fire hall. Town owns elec. light, power, water and sewerage systems. 4 elevators (123,000 bush.), 2 lumber yards, newspaper, 2 livery stables, garage, machine shop, several stores, skating rink, 3 general stores, chopping mill. Good duck and prairie chicken shooting. Pop. 811.

SUTHERLAND, on South Saskatchewan River, 2 miles from Saskatoon, on C.P.R. Street ry. to Saskatoon. Hotel. 3 churches, 8-roomed brick school, town hall, bank. Water and partial sewerage systems owned by town. Dom. Govt. forestry farm. University of Saskatchewan adjoins town on the west. Largest C.P.R. div. pt. between Winnipeg and Edmonton, and headquarters for District 2 of Saskatchewan Division. Monthly pay-roll \$40,000 in shops, yards and roundhouse. Football, baseball, tennis, curling and hockey clubs. Pop. 1,200.

SPECIAL OPPORTUNITIES.—Strawboard factories, brick yard. Deposits of clay and gravel at hand. Wholesale houses. Write Sec. Bd. Trade.

SWIFT CURRENT, incorporated as a city, Jan., 1914. On Swift Current Creek and C.P.R. main line, d.v. pt., 153 miles w. of Regina. Govt. telephone. Hotels, Healey (Eur.), Carlton (Eur.), Empress \$2.50 up, Alexander, Imperial. 5 churches, high and 3 public schools, business college, 7 banks. Municipality owns water-works, sewerage, hospital, and elec. light. Land titles and judicial district offices, customs house, Dom. Lands office, 2 theatres, 5 elevators, 7 lumber yards, 18 wholesale houses, steam laundry, 1 weekly and 1 semi-weekly newspaper, 6 livery stables, cement products factory, aerated water factory, planing mill, creamery, curling, ice and roller skating rinks (3), race track, fire hall, tennis courts, 200-barrel flour mill. Good farming section. Distributing centre for 3,000 sq. miles. Assessment, 1910, \$1,672,380; 1914, \$13,910,575. Building permits, 1914, \$685,232; Customs' receipts, 1914, \$66,354. Alt. 2,423. Pop. (Civic Census, Nov., 1913), 5,765.

NOTE.—C.P.R. branches to n.e. and s.e. under construction. C.N.R. and G.T.P. expected shortly.

SPECIAL OPPORTUNITIES.—Wholesale grocery, brick yard, pork packing, cold storage plant, flax products factory, stock food factory, tannery, cereal food mill, apartment block, flour mill, market gardening. Town owns 40 acres industrial sites, offered to manufacturers at cost. Liberal inducements to new industries. Elec. power, 10c. per k.w. hour. See under "Agric. and Fruit Districts." Write Sec. Bd. Trade.

VANGUARD, on C.P.R., 50 miles s.e. of Swift Current. Hotel, Vanguard \$2.50. 3 churches, school hospital, fire hall, bank, 16 stores. Rich grain-growing district, 1,500,000 bushels shipped in 1913. Pop. 600.

SPECIAL OPPORTUNITIES.—Flour mill, flax mill. Write Sec. Bd. Trade.

VONDA, on C.N.R. main line, 35 miles n.e. of Saskatoon, hr. to Melfort. Hotels, Vonda, Alexandra, \$2 to \$2.50. 3 churches, public and separate schools, bank, R.N.W.M.P. Agric. Society, 4 elevators, 2 lumber yards, cold storage plant, livery, motor livery, I.O.O.F. and C.O.F. Societies, chopping mill, creamery, restaurants, 4 general stores, 2 hardware, 7 others. Summer resort at McAvoy Lake, 4 miles. A grain-growing and fine mixed-farming district. Pop. 463 (local census).

SPECIAL OPPORTUNITIES.—Flour and feed store, veterinary, builder and contractor, machine shop. See under "Agric. and Fruit Districts." Write Sec. Bd. Trade.

WADENA, on C.N.R. main line, 139 miles e. of Saskatoon, 366 miles n.w. of Winnipeg. Hotels, Diner \$2, \$2.50, Wadena \$1.00 up. 3 churches (Swed., Bapt., Ang. and Meth.), R.C. and Lutheran services, \$30,000 high and public school, 2 banks. Sub-agency Dom. Lands Office, Govt. immigration hall, newspaper, R.N.W.M.P., 3 elevators, flour mill (30 bbls.), grist mill, foundry and machine shop, Govt. creamery, laundry, 2 lumber yards, 2 livery, motor livery, 2 woodworking shops, theatre and moving pictures, oil distributing warehouses, 3 restaurants. Town owns elec. light and power plant. Mixed farming district. Large stockyards. Annual fair at agric. fair grounds, 30 acres. Fishing Lake (12 miles), provides good hatching, hunting, fishing and camping. Excellent goose, duck and chicken shooting; moose, deer, bear, 40 miles north. 6 lakes within 40-mile radius. Neighborhood supplies gravel and clay. Pop. (Town Census, Aug., 1914), 763.

NOTE.—C.P.R. Sheho-Prince Albert br., graded 2 miles from town.

SPECIAL OPPORTUNITIES.—Dry goods and gent's furnisher. clay bricks cement blocks, sash and door factory.

REGINA THE CAPITAL CITY OF SASKATCHEWAN



Eleventh Avenue, Regina, Sask.

Regina has been the centre of rapid development during the past few years. The population has increased from 4,000 in 1904 to 50,000 in 1916. The war has not stopped its progress. The Industrial development of the city has kept pace with the growth of population. The **MODEL INDUSTRIAL SECTION** having become a veritable hive of industry.

Read description of Regina and Regina District pp. 54 and 32. Write for free literature

Manufacturers contemplating establishing in Western Canada should communicate with

Secretary Board of Trade, - Regina, Sask., Canada

Inducements offered by town. See under "Agricultural Districts." Write for free pamphlet to Sec. Bd. Trade.

WAPELLA, on C.P.R. main line, 110 mles e. of Regina. Hotel, Commercial \$1.50. 4 churches (Ang., Pres., R.C., Meth.), public school, bank, 6 elevators (178,000 bush.), telephone, lumber yard, newspaper, 3 livery stables, garage. Alt. 1,030. Pop. 485.

SPECIAL OPPORTUNITIES.—Flour mill, pork packing (building erected but vacant), tannery, sash and door factory, jeweller, lawyer, dentist, veterinary. Write Pres. Bd. Trade

WATROUS, div. pt., on G.T.P., 60 miles e. of Saskatoon. Hotels Tourist, Manitou \$2 to \$3. 5 churches, \$35,000 school, 2 banks, 3 elevators, Elec. light Co., machine shop, dump rock Co. Manitou Lake 3 miles distant, 14 miles by $\frac{1}{4}$, is becoming known as a tourist and health resort. Pop. 1,500.

NOTE.—Water and sewerage systems completed in 1915.

SPECIAL OPPORTUNITIES.—Flour mill, laundry, lawyer, private bank. Free sites offered to new industries. Write Sec. Bd. Trade.

WEYBURN, on Souris River and main Soo line, on C.P.R. Winnipeg to Lethbridge br. and G.T.P. to Regina (not in operation), 315 miles w. of Winnipeg, 125 miles s. of Regina. C.P.R. div. pt. Hotels, Royal, Waverly, Soo \$2. 6 churches, 4 public schools, collegiate, 2 hospitals, 6 banks, flour mill (150 bbls. per day), 6 elevators (210,000 bush.), 3 automobile distributing agencies, bottling works, machine, brick and tile factory, municipal elec. light and power plant, dept. store, 20 wholesale distributors, 2 newspapers, customs house, good wheat market, water and sewerage systems. Commercial Club, Dom. Lands office. A judicial centre, with resident judge. H.O. Weyburn Security Bank. Alt. 1,847. Pop. (Sworn Census, June, 1913), 5,378. Write Industrial Commissioner.

WHITEWOOD, on C.P.R. Broadview Section, 250 miles w. of Winnipeg. Hotel, Armstrong \$2. 4 churches, 1 school, 1 bank, 3 elevators (75,000 bush.), telephone, lumber yard, newspaper, 2 livery stables, 3 general stores, 3 implement warehouses, \$7,000 curling and skating rink, fishing at Round Lake, 16 miles. 35,000 sq. ft. of granolithic pavement laid 1911. A grain-growing and mixed farming district. Alt. 1,966. Pop. 500.

SPECIAL OPPORTUNITIES.—Flour and feed mills brick plant (brick clay a few miles north), newspaper, shoe-maker, jeweller, tailor, restaurant. Write Sec.-Treas. Town of Whitewood.

INDUSTRIAL OPPORTUNITIES

WILKIE, on C.P.R., div. pt. on Winnipeg-Edmonton line and 3 branches in operation 100 miles w. of Saskatoon, 267 miles s.e. of Edmonton. Hotels, Empire \$2 to \$2.25, Wilkie \$1.50 to \$2. 3 churches, public and high school, hospital, 2 banks. Volunteer fire brigade, Agric. Society and exhibition grounds, sub-agency Dom. Lands office. Govt. Immigration hall, R.N.W.M.P. barracks. Town band, choral society, tennis and gun clubs, skating and curling rinks. Town owns elec. light and water systems. Elevator capacity, including flag stations, 223,682 bush., 3 lumber yards, machine shop, flour mill (50 bbls.), creamery, 2 livery stables, 2 garages, w. newspaper. Bathing and sailing at Coldspring Lake (7 m.). A rich grain-growing and mixed-farming district. Pop. 1,200.

SPECIAL OPPORTUNITIES.—Brick and cement plants, steam laundry, wholesalers, cattle, sheep and hog raising, mixed farming. Write Sec. Bd. Trade.

WOLSELEY, on C.P.R. Moose Jaw Section, 62 miles e. of Regina. A divisional point of Wolseley-Reston branch. Hotel, Leland \$2. 6 churches, convent, collegiate, public school, Govt. Detention Home for Boys, electric light and power (plant owned by town). 7 elevators (186,000 bush.), 2 banks, 2 laundries, telephone. The C.P.R. have a nursery here of 115 acres. Alt. 1,950. Pop. 1,200.

NOTE.—400,000 bushels of wheat marketed from Wilkie, Write Mgr. Union Bank.

SPECIAL OPPORTUNITIES.—Flour mill, dairy, creamery, brick yard, painters and decorators, tinsmith, plumber. Write Mgr. Union Bank.

WYNYARD, near Big Quill Lake, $3\frac{1}{2}$ miles. Div. pt. on C.P.R., 100 miles e. of Saskatoon. A judicial centre. Hotel, Queen's \$2 up. 4 churches (Ang., Pres., Icelandic 2), public and high schools, 3 elevators, 3 implement houses, 2 liveries, 3 auto liveries, Flour and grist mill, weekly newspaper, 11 stores, 2 banks. Summer resort at mineralized lake nearby, beneficial for rheumatism. Good shooting—wild geese, turkey, duck and chicken. Pop. 800.

SPECIAL OPPORTUNITIES.—Elec. light plant, brick yard, dentist, veterinary surgeon. Write Pres. Bd. Trade.

YELLOW GRASS, 70 miles s.e. of Moose Jaw, on C.P.R. Hotel, Maple Leaf (licensed). 5 churches (Ang., Pres., Bapt., Meth., Christ's), R.C. services, public and high school, town hall, fire hall, police barracks, park, 2 banks. Town owns water system and electric plant. 2 liveries, 3 auto liveries, 2 general stores, 5 implement dealers. Pop. about 500.

SPECIAL OPPORTUNITIES.—Flour mill, packing plant, creamery, horse exchange, moving picture theatre, brick yard. Write Sec.-Treas. of Town.

YORKTON, on C.P.R., C.N.R. and G.T.P. Ry. (Hudson Bay br.), 130 miles n.e. of Regina, 280 miles w. of Winnipeg. Hotels, Balmoral \$2 to \$3, Yorkton \$2.50. 9 churches, 3 public schools, \$75,000 high school, 5 banks, Dom. Lands office, court house, Lands Titles office, hospital, R.N.W.M.P. barracks, 2 brick yards, flour mill, oatmeal mill, creamery, 8 elevators (240,000 hush.), planing mill, 5 lumber yards, 2 machine shops, aerated waterworks, 3 garages, 2 newspapers, cement block works, steam laundry, marble works, 7 implement Cos. Municipally-owned electric light and power plant, waterworks, sewerage, fire hall. Judicial centre of N.E. Sask. Govt. local and long dist. telephones. Summer resort at York Lake, $4\frac{1}{2}$ miles. Good shooting. Pop. 5,217.

NOTE.—New fire hall, municipal skating rink to be constructed.

SPECIAL OPPORTUNITIES.—Wholesale distributing houses, strawboard factory, pottery plant. Liberal inducements to new industries. Building dwellings for sale or rent from \$2,000 to \$5,000 each. See under "Agric. and Fruit Districts." Write for free booklet to Sec. Bd. Trade.

ZEALANDIA, in Goose Lake District, 65 miles s.w. of Saskatoon, on C.N.R. Saskatoon-Calgary line. Hotel Zealandia, \$2. 3 churches (Ang., Pres., Christ's), park, town hall, school, 4 grain elevators (160,000 hushels), 2 banks, usual stores, a sub-office for Dominion Lands. Elec. light plant owned by private co. Excellent farming district. Pop. 500.

SPECIAL OPPORTUNITIES.—Doctor, printer, newspaper, dentist, photographer. Write to Mgr. Union Bank.

RETURNED SOLDIERS

WELCOME AND AID LEAGUES

A Saskatchewan Committee of the Dominion Hospital Commission has been appointed with head office in Regina, to organize "Returned Soldiers' Welcome and Aid Leagues" throughout Saskatchewan. This Committee and the local "Leagues" will undertake to find suitable employment for soldiers returned to Saskatchewan. Facilities in Saskatchewan for the training and treatment of returned soldiers have been reported to the Dominion Hospitals Commission.

FACILITIES FOR TRAINING

Facilities for Training include: (a) Teaching; (b) Commercial Life; (c) Agricultural Pursuits; (d) Industrial Pursuits. There are Collegiate Institutes and Normal Schools at various centres throughout the Province, and a fully equipped College of Agriculture at Saskatoon.

FACILITIES FOR TREATMENT

Facilities for treatment include: (a) Mental Disorders; (b) Pulmonary Diseases. St. Chad's (Anglican) College has been placed at the disposal of the Commission for use as a Military Hospital.

FURTHER INFORMATION

Mr. Harmon Jones, of Regina, the Secretary of the Saskatchewan Committee, will be pleased to answer any enquiries addressed to him on this subject.

Union Bank of Canada

Established 1865

Head Office, Winnipeg

PAID-UP CAPITAL.....\$ 5,000,000
TOTAL ASSETS, OVER.....\$100,000,000

BRANCHES IN SASKATCHEWAN

Abbey	Guernsey	Maryfield	Sceptre
Adanac	Gull Lake	Melfort	Scott
Alsask	Hatton	Milestone	Shaunavon
Arcola	Hazenmore	Moose Jaw	Simpson
Asquith	Herbert	Moosomin	Sintaluta
Assinibola	Hughton	Morse	Southey
Bounty	Humboldt	Netherhill	Strassburg
Bruno	Indian Head	Neudorf	Swift Current
Buchanan	Jansen	Ogema	Tessier
Bulyea	Kelfield	Outlook	Theodore
Cahri	Kerrobert	Oxbow	Togo
Canora	Kindersley	Pennant	Tompkins
Carlyle	Landis	Pense	Vanguard
Craik	Lang	Perdue	Viceroy
Cupar	Lanigan	Piapot	Vidora
Cut Knife	Lawson	Plenty	Wapella
Dinsmore	Lemberg	Prince Albert	Watrous
Dummer	Loverna	Prussia	Wawota
Eastend	Lumsden	Qu'Appelle	Webb
Esterhazy	Luseland	Regina	Weyburn
Estevan	Macklin	Robsart	Wilkie
Eychrow	Macrorie	Rocanville	Windthorst
Fillmore	Major	Rosetown	Wolseley
Gravelbourg	Maple Creek	Saskatoon	Yorkton
			Zealandia

LONDON, ENG., OFFICE

6 Princes Street, E.C.

West End Branch: Haymarket, S.W.

Managers of the above branches will be pleased to answer enquiries regarding Saskatchewan.

The London Offices transact every kind of banking business with Canada.

Superintendent of Saskatchewan Branches,

J S. HIAM, Winnipeg.



the 1990s, the number of people in the world who are under 15 years of age is expected to increase from 1.2 billion to 1.5 billion, and the number of people aged 65 and over is expected to increase from 0.4 billion to 0.7 billion (United Nations, 1994).

As the population of the world grows, the number of people in the labor force is expected to increase. The number of people in the labor force is expected to increase from 1.2 billion in 1990 to 1.5 billion in 2010. The number of people in the labor force is expected to increase from 0.4 billion in 1990 to 0.7 billion in 2010. The number of people in the labor force is expected to increase from 0.4 billion in 1990 to 0.7 billion in 2010.

The number of people in the labor force is expected to increase from 0.4 billion in 1990 to 0.7 billion in 2010. The number of people in the labor force is expected to increase from 0.4 billion in 1990 to 0.7 billion in 2010. The number of people in the labor force is expected to increase from 0.4 billion in 1990 to 0.7 billion in 2010.

The number of people in the labor force is expected to increase from 0.4 billion in 1990 to 0.7 billion in 2010. The number of people in the labor force is expected to increase from 0.4 billion in 1990 to 0.7 billion in 2010. The number of people in the labor force is expected to increase from 0.4 billion in 1990 to 0.7 billion in 2010.

The number of people in the labor force is expected to increase from 0.4 billion in 1990 to 0.7 billion in 2010. The number of people in the labor force is expected to increase from 0.4 billion in 1990 to 0.7 billion in 2010. The number of people in the labor force is expected to increase from 0.4 billion in 1990 to 0.7 billion in 2010.

The number of people in the labor force is expected to increase from 0.4 billion in 1990 to 0.7 billion in 2010. The number of people in the labor force is expected to increase from 0.4 billion in 1990 to 0.7 billion in 2010. The number of people in the labor force is expected to increase from 0.4 billion in 1990 to 0.7 billion in 2010.

The number of people in the labor force is expected to increase from 0.4 billion in 1990 to 0.7 billion in 2010. The number of people in the labor force is expected to increase from 0.4 billion in 1990 to 0.7 billion in 2010. The number of people in the labor force is expected to increase from 0.4 billion in 1990 to 0.7 billion in 2010.