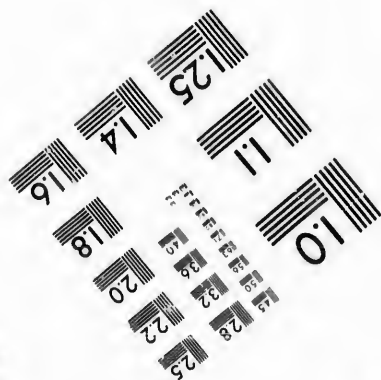
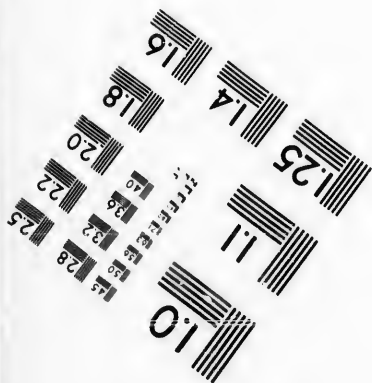
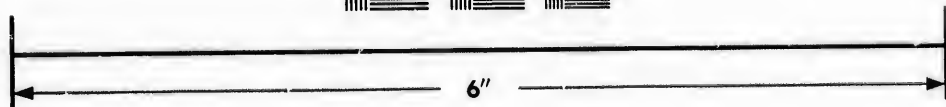
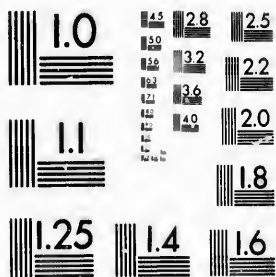


**IMAGE EVALUATION
TEST TARGET (MT-3)**



**Photographic
Sciences
Corporation**

93 WEST MAIN STREET
WEBSTER, N.Y. 14580
(716) 872-4503

**CIHM/ICMH
Microfiche
Series.**

**CIHM/ICMH
Collection de
microfiches.**



Canadian Institute for Historical Microreproductions / Institut canadien de microreproductions historiques

© 1987

Technical and Bibliographic Notes/Notes techniques et bibliographiques

The Institute has attempted to obtain the best original copy available for filming. Features of this copy which may be bibliographically unique, which may alter any of the images in the reproduction, or which may significantly change the usual method of filming, are checked below.

L'Institut a microfilmé le meilleur exemplaire qu'il lui a été possible de se procurer. Les détails de cet exemplaire qui sont peut-être uniques du point de vue bibliographique, qui peuvent modifier une image reproduite, ou qui peuvent exiger une modification dans la méthode normale de filmage sont indiqués ci-dessous.

- Coloured covers/
Couverture de couleur
- Covers damaged/
Couverture endommagée
- Covers restored and/or laminated/
Couverture restaurée et/ou pelliculée
- Cover title missing/
Le titre de couverture manque
- Coloured maps/
Cartes géographiques en couleur
- Coloured ink (i.e. other than blue or black)/
Encre de couleur (i.e. autre que bleue ou noire)
- Coloured plates and/or illustrations/
Planches et/ou illustrations en couleur
- Bound with other material/
Relié avec d'autres documents
- Tight binding may cause shadows or distortion along interior margin/
La reliure serrée peut causer de l'ombre ou de la distorsion le long de la marge intérieure
- Blank leaves added during restoration may appear within the text. Whenever possible, these have been omitted from filming/
Il se peut que certaines pages blanches ajoutées lors d'une restauration apparaissent dans le texte, mais, lorsque cela était possible, ces pages n'ont pas été filmées.
- Additional comments:
Commentaires supplémentaires:

- Coloured pages/
Pages de couleur
- Pages damaged/
Pages endommagées
- Pages restored and/or laminated/
Pages restaurées et/ou pelliculées
- Pages discoloured, stained or foxed/
Pages décolorées, tachetées ou piquées
- Pages detached/
Pages détachées
- Showthrough/
Transparence
- Quality of print varies/
Qualité inégale de l'impression
- Includes supplementary material/
Comprend du matériel supplémentaire
- Only edition available/
Seule édition disponible
- Pages wholly or partially obscured by errata slips, tissues, etc., have been refilmed to ensure the best possible image/
Les pages totalement ou partiellement obscurcies par un feuillet d'errata, une pelure, etc., ont été filmées à nouveau de façon à obtenir la meilleure image possible.

This item is filmed at the reduction ratio checked below/
Ce document est filmé au taux de réduction indiqué ci-dessous.

10X	14X	18X	22X	26X	30X
<input type="checkbox"/>	<input type="checkbox"/>	<input checked="" type="checkbox"/>	<input type="checkbox"/>	<input type="checkbox"/>	<input type="checkbox"/>
12X	16X	20X	24X	28X	32X

The co
to the

The im
possib
of the
filming

Origina
beginn
the las
sion, o
other c
first p
sion, a
or illus

The las
shall c
TINUE
which

Maps,
differe
entirel
beginn
right a
require
metho

The copy filmed here has been reproduced thanks to the generosity of:

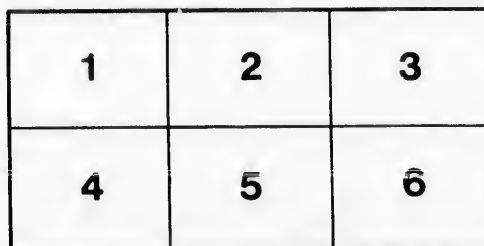
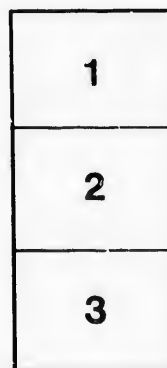
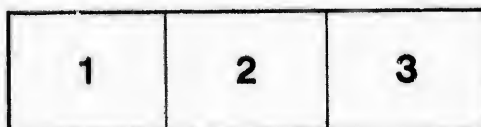
Metropolitan Toronto Library
Canadian History Department

The images appearing here are the best quality possible considering the condition and legibility of the original copy and in keeping with the filming contract specifications.

Original copies in printed paper covers are filmed beginning with the front cover and ending on the last page with a printed or illustrated impression, or the back cover when appropriate. All other original copies are filmed beginning on the first page with a printed or illustrated impression, and ending on the last page with a printed or illustrated impression.

The last recorded frame on each microfiche shall contain the symbol \rightarrow (meaning "CONTINUED"), or the symbol ∇ (meaning "END"), whichever applies.

Maps, plates, charts, etc., may be filmed at different reduction ratios. Those too large to be entirely included in one exposure are filmed beginning in the upper left hand corner, left to right and top to bottom, as many frames as required. The following diagrams illustrate the method:



L'exemplaire filmé fut reproduit grâce à la générosité de:

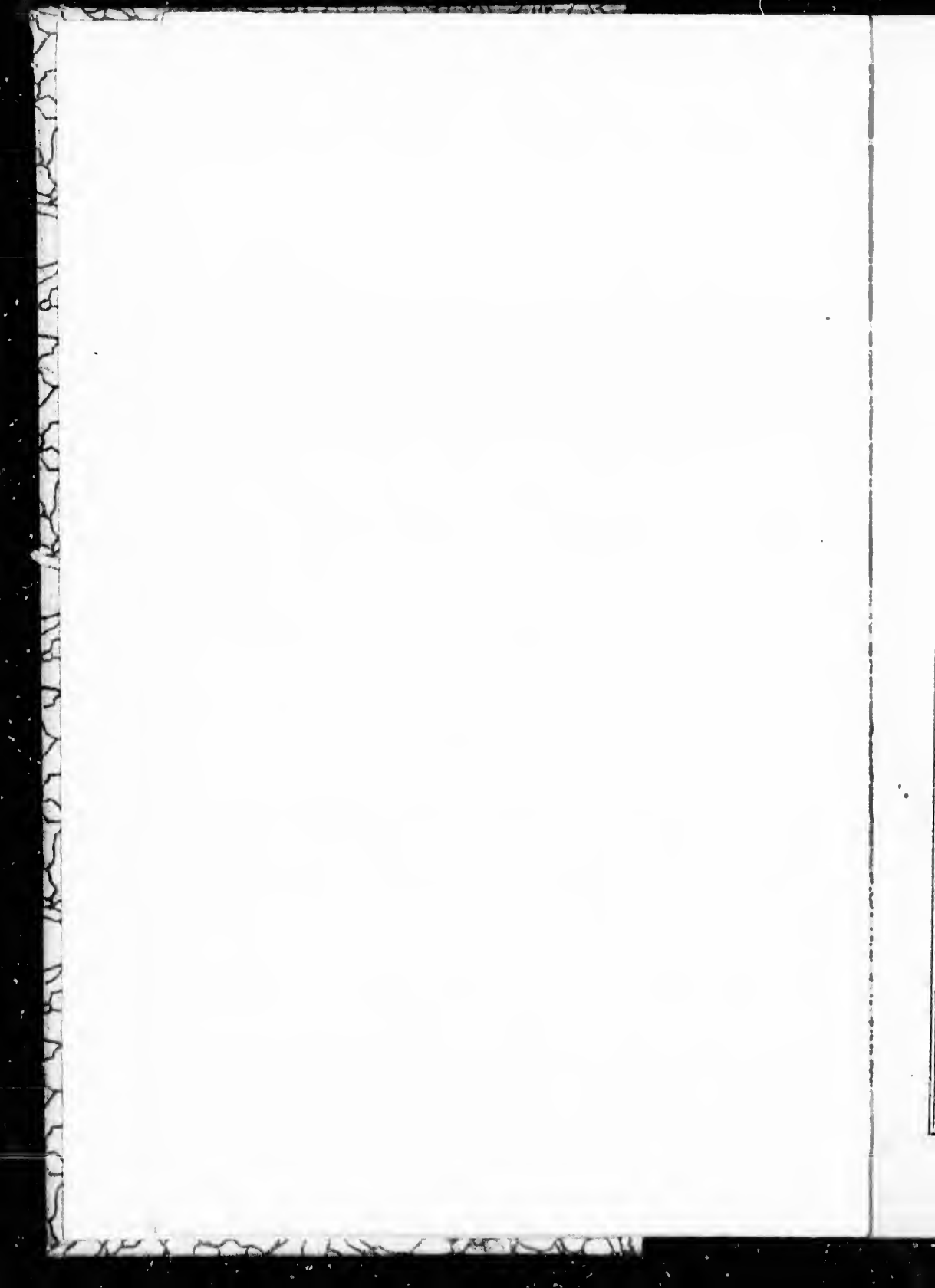
Metropolitan Toronto Library
Canadian History Department

Les images suivantes ont été reproduites avec le plus grand soin, compte tenu de la condition et de la netteté de l'exemplaire filmé, et en conformité avec les conditions du contrat de filmage.

Les exemplaires originaux dont la couverture en papier est imprimée sont filmés en commençant par le premier plat et en terminant soit par la dernière page qui comporte une empreinte d'impression ou d'illustration, soit par le second plat, selon le cas. Tous les autres exemplaires originaux sont filmés en commençant par la première page qui comporte une empreinte d'impression ou d'illustration et en terminant par la dernière page qui comporte une telle empreinte.

Un des symboles suivants apparaîtra sur la dernière image de chaque microfiche, selon le cas: le symbole \rightarrow signifie "A SUIVRE", le symbole ∇ signifie "FIN".

Les cartes, planches, tableaux, etc., peuvent être filmés à des taux de réduction différents. Lorsque le document est trop grand pour être reproduit en un seul cliché, il est filmé à partir de l'angle supérieur gauche, de gauche à droite, et de haut en bas, en prenant le nombre d'images nécessaire. Les diagrammes suivants illustrent la méthode.



970.1.117

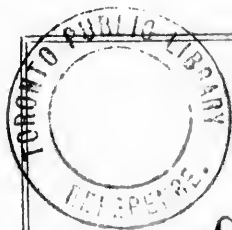


CATALOGUE
OF
SKETCHES OF INDIANS,
AND
INDIAN CHIEFS,
LANDSCAPES, DANCES,
COSTUMES, &c. &c.

~~~~~  
BY PAUL KANE.  
~~~~~

TORONTO:
PRINTED BY SCOBIE AND BALFOUR, ADELAIDE BUILDINGS, KING STREET.

November, 1848.



11104

JAN 23 1933 CATALOGUE.

- No.
- 1 Sig-in-nock—Blackbird—Head Chief of Ma-ni-too-awning, Ojibwah tribe.
 - 2 Mas-kuh-noon-ge—Big Fish—An Indian of the Ojibwah tribe.
 - 3 She-bah-ke-zhick—Hole in the Sky—An Indian Chief of Ojibwah tribe, from Lake Superior.
 - 4 Ma-cheek-e-wis.
 - 5 & 6 Indians of the same tribe from Lake Superior.
 - 7 Saw-gun.
 - 8 Sha-nu-oh-ke-zhick—Against the Heavens—from Lake Nipissing.
 - 9 & 10 Indians from Michipicaton.
 - 11 As-a-bo-nish—Racoon—Indian Chief of the Attawah tribe, from the Manitoulin Islands.
 - 12 Indian from Manitooawning.
 - 13 Muck-koze—The Young Bear—Chief of Ottawa tribe, from the Manitoulin Islands.
 - 14 Co-cosh—The Hog—a Pot-a-wat-o-nae Indian.
 - 15 Now-on-dhu-go—of Attawah tribe from Lake Michigan.
 - 16 Shaw-way-nos-soway—a great Medicine Man, from the Manitoulin Islands.
 - 17 A half-breed Indian Girl, from the Sault St. Mary.
 - 18 Maw-za-pau-kau—The Brave Soldier—from Wolf River.
 - 19 Muck-e-tah-kin-ne-u—Black Eagle—Manomone tribe, from Fox River, Lake Winnibago.
 - 20 I-o-we-to-ke—The Serpent—an Indian Woman of the Manomone tribe, from Fox River, Lake Winnibago.
 - 21 Ke-wah-tin—The North Wind—Manamone tribe, Lake Winnibago.
 - 22 Wah-bo-nim—The White Dog—Manomone tribe, Lake Winnibago.
 - 23 Muck-a-too—same as above.

- No.
- 24 I-a-co-way—The Loud Speaker—Chief of the Soto Indians, from Fort Francis lac la plue.
- 25 Pe-co-dhis—same as above.
- 26 Ka-ke-ka-ki-ji-koe—The Constant Sky—a Soto girl from the Red River Settlement.
- 27 } Indians of the Cree tribe, from the Sas-
- 28 War Cap, } kachawan River, near Fort Pitt.
- 29 Hus-kus-coo-sish—The Young Grass—of the Cree tribe, on the Saskachawan River.
- 30 Pe-tic-o-paw-this—The Little Round Man—of the Cree tribe, on the Saskachawan River, near Carlton.
- 31 Francis Lucie—a half-breed Cree, from Edmonton House.
- 32 A blood Indian Chief—from the Western prairies.
- 33 Oke-maw-wah-jack—The Spirit Chief—an Esquimaux.
- 34 Ca-is-no—of the Chimook tribe, from Columbia River.
- 35 Chi-a-clah—Chief of the Songes, from Vancouver's Island.
- 36 Wilhamet Indians.
- 37 }
38 } Medicine Men on the Pacific Coast, near the
39 } Straits de Fuca.
40 }
- 41 A Medicine Pipe, do. do.
- 42-3-4 Indian Wigwams.
- 45-6-7 Sketches on the Island of Mackinaw.
- 48 The Dog Portage.
- 49 The Pin Portage.
- 50 French River Rapids.
- 51 Encampment on River Winnipeg.
- 52 Chûte à Jacko, on do. do.
- 53 Pointe des Bois, do. do.
- 54 Blackfoot Chief, from the Western prairies.
- 55 Buffalo head.
- 56 Group of Buffaloe.
- 57 Saskachawan River.
- 58 A Buffalo Pound.
- 59 A Medicine Pipe Stem Dance.
- 60 A Scalp Dance.
- 61 Falls on the Peluce River.

No.

- 62 View near Fort Vancouver (Mount Hood.)
 63-4 Sketches of Mount St. Helen, near Fort Vancouver.
 65 Mills in Oregon City.
 66 Oregon City.
 67 Main Street, Oregon City.
 68-9 Falls near Oregon City.
 70 Fort Vancouver.
 71 Interior of a Click-a-tat Lodge on Columbia River.
 72 A Well in the Woods.
 73 Lodges on the Columbia River—drying Salmon.
 74 Catching Salmon on the Falls near Colville, Columbia River.
 75 Castle Rock, Columbia River.
 76 Sketch of Mount Hood, Columbia River.
 77 Lodges on Vancouver's Island.
 78 Norway House.
 79 Sketch on River Winnipeg.
 80 Babeen Woman, North West Coast.

Sketches in Water Colors.

- 81 May-dwi-ga-mi-ki-nun-ge—I hear the noise of the deer—The head chief of the Ojibwah tribe, on the Kaministaquoiah River.
 82 Mah-min—The Feather—Head Chief of the Asseneboine tribe, Rocky Mountain House.
 83 Wah-ke-jo-e-tass-a-neen—The white half man—second chief of the Asseneboine tribe, Rocky Mountain House.
 84 Ka-ah-ke-ka-sahk-a-wa-ow—The man that gives the war whoop—The head chief of the Cree tribe.
 85 Pe-a-pus-qua-hum—One that passes through the sky—a Cree Indian living among the Asseneboines, Rocky Mountain House.
 86 A Cree Indian.
 87 Pe-pa-ka-chos—a Cree Indian.
 88 Achu-wish-a-ma-hy—The Grisly Bear standing—a Cree Indian.
 89 Iron Collar—Blood Indian Chief from the Western prairies.
 90 Big Snake—Blackfoot Chief from do.
 91 White Buffalo Calf—Blackfoot Indian do.

- No.
 92 Chin-i-a-sa—The Little Slave—a Chippawayan Indian, on the Athabasca River.
 93 Achi-sa-lay—The call of the Wind—of the Assickanay tribe, on the Rocky Mountains.
 94 Collection of Painted Heads.
 95 A Chief of the Lakes, Columbia River.
 96 See-pase—Chief of the Salmon, Columbia River.
 97 Chin-oo-as—A Flathead Indian, from the West side of the Rocky Mountains.
 98 El-ko-ka-shin—A Shawalloway Indian, from the Cascades.
 99 Tillu-ko-ikt—A Chief of the Kyoos tribe. This man was one of the party of Indians who murdered Dr. & Mrs. Whitman, and 12 other individuals of the Missionary Station at Wy-al-poo, on the Walla Walla River.
 100 The Wife of Tillu-ko-ikt.
 101 Tamachus—also one of Dr. W.'s murderers.
 102 Son of the great Walla Walla Chief, Pe-o-pe-o-maux-maux.
 103 Brother to the same.
 104-5 Nepersee Indians, Nepersee River.
 106 Indian of the Lakes.
 107 Ku-ar-tos—An Indian of the Wishkum tribe, from the Shoots on Columbia River.
 168 So-wall-o-way—a Chief of the Dalles.
 109 Tum-se-ne-ho—The Man without Blood—a Spokane Chief, on the Spokane River.
 110 To-ma-quin—a Cascade Chief, Columbia River.
 111 A Cascade Indian, Columbia River.
 112 Studies of Figures, do.
 113-14 Chin-ook Women, from Astoria.
 115 Child's head—Chinook, do.
 116 Boy with head dress, do.
 117 A Click-a-tat Indian, Columbia River.
 118 Cow-we-cham—Cow-we-litcks—River Cow-we-litcks.
 119 Kiss-cox—Chief of do. do.
 120 A Chinook Indian.
 121 A Slave of the Chastay tribe, south of the Columbia River, on the Sea Coast.
 122 Old Cox—a Sandwich Islander, who was present at the murder of Capt. Cook.

- No.
123 Law-li-num—Chief of Whidbey's Island, Puget Sound.
124 Sca-tei-son—a Songhes Indian, Vancouver's Island.
125 A Girl from Puget Sound.
126 Ukultee Indian, Johnson's Straits.
127 A Cow-i-chin Indian, from the Straits de Fuca.
128 Yate-sut-soot—Chief of the Chalm's, south side of the Straits de Fuca.
129 A Chief of the Sin-no-ho-mas, Puget Sound.
130 Slam-ma-hur-set—Chief of Cum-sin-no-ho—taken at Fort Victoria, Vancouver's Island.
131 A U-sa-nich Indian, from the Gulf of Georgia.
132 Yallocum, Chief of Cape Flattery.
133 Onepa—a Sinnohomas, Puget Sound.
134 Wife of Clalm Chief, Whidbey Island.
135-6 Chiefs of the Chimpseyans, Chatham Sound.
137 A daughter of a Clalm Chief, south of the Straits de Fuca.
138 A Clalm Woman making a basket.
139 Saw-sea-a, the Head Chief of the Cow-i-chin tribe.
140 Son of Saw-se-a—Medicine Man—north of Fraser's River.
141 A Quat-lin Indian, on Fraser's River.
142 A Sca-ehet Indian, do.
143 A Nu-et-tee Chief, north end of Vancouver's Island. The Nuette Indians have conical-shaped heads.
144 A Songhes Woman twisting yarn.
145 A Mountain Goat.
146 Study of Snow on a tree.
147 " of a Carved Stone Pipe.
148 Buffalo War Robe.
149-50 North West Canoes.
151 War party in Canoes, in the Esquimelt.
152 Indian Graves—Puget's Sound.
153 Sketch of Indian Fan—belonged to the late Mrs. Whitman, murdered by Tillukoikt, Tamachus and others.
154 A Painted Horse.
155 War Clubs.
156 Indian Dogs.
157 A Sketch.
158 Moss Tree.
159 Interior of Lodge.

- No.
 160 Canoes on Columbia River.
 161-2-3 Indian Graves on Columbia River.
 164 Indian Graves on Cowlet's River.
 165 Medicine Masks—North West Coast.
 166 Indians spearing Fish—Columbia River.
 167 Method of flattening the head among the Chinook
 Indians.
 168 Indian Woman weaving a blanket.
 169 Interior of a Clalm Lodge.
 170 Pine Tree.
 171 Heads of Prairie Antelopes.
 172 A Buffalo Ball.
 173 Carved S
 174 Sled Dog
 175 A Moun- Head.

Sketch : Columbia River.

- 176 Daile des b
 177 Mount Hood.
 178 Columbia River.
 179 Indian Lodge.
 180 Coffin Rock.
 181 The Little Dalles.
 182 The Kettle Falls.
 183 Fort Walla-Walla.
 184 Cape Horn.
 185 Rock called the Too-ne-per-see-girls.
 186 Supposed Land Slip.
 187 Cascades.
 188 Sketch near Fort Vancouver.

Sketches in the Rocky Mountains.

- 189 Jasper's House.
 190 Jasper's Lake.
 191 Laroque's Prairie.
 192 Snow Scene in the Mountains.
 193-4 Mountain Scenery.
 195 Roman Catholic Mission Station, near the Wilha-
 met River, 30 miles from Oregon City.
 196 Wesleyan Methodist Station, Play Green Lake.
 197 Presbyterian Mission Station, near the Spokane River.
 198 Falls near Fort Francis—Rainy Lake.
 199 Fort Francis.
 200 Slave Falls.

- No.
201 White Mud Portage.
202 Canoes.
203 Prairie on Fire.
204 Lake in the Prairie.
205 Fort Pitt.
206 Edmunton House.
207 Indian Grave. [Element.
208 Encampment of Half-breeds, near Red River Set-
209 Sketch in the Prairie.
210 Fort Gary, Red River.
211 Rocky Mountain House.
212 Falls on the Wilhamet River.
213 Bird's Eye View of Wilhamet River.
214 A Click-a-tat Lodge.
215 Puget Sound Establishment.
216 Sketch on Spokane River.
217 Prairie de Bute.
218-19 Sketches on the Grande Coulé south of the Co-
lumbia River.
220-1-2 Sketches on the Peluce River, a branch of the
Nepersee River.
223 Indian Forts on Whidbey's Island.
224 A Barrière for catching salmon, south of the Straits
de Fuca.
225 A Songhes village at the Straits de Fuca.
226 Indians returning from gathering Camas, Vancou-
ver's Island.
227 Indians gambling--the game of Le-hal-lum.
228 Mount Baker, from Vancouver's Island.
229 Crossing the Straits de Fuca.
230 Boat Encampment, head of the North Branch of
the Columbia River.
231-2 Carlton, Saskachawan River.
233 Pambino River.
234 Columbia River.
225 Lodges on Prairie, near Fort Vancouver.
236 Carved Pipe.
237 A wolf's head.
238 A Chief's Daughter from Lake St. Clair.
239 Man-a-to-wa-bay--The *He-devil*--Ojibwah tribe,
Lake Michigan.
240 Na-too-waw-sit--The man that was born--a Soto
Indian.

ement.
er Set-

the Co-

h of the

e Straits

Wancou-

n.

ranch of

h tribe,

—a Soto

